



# Full wwPDB X-ray Structure Validation Report

Mar 1, 2014 – 03:47 AM GMT

PDB ID : 25C8  
Title : CATALYTIC ANTIBODY 5C8, FAB-HAPTEN COMPLEX  
Authors : Gruber, K.; Wilson, I.A.  
Deposited on : 1998-03-18  
Resolution : 2.00 Å(reported)

This is a full wwPDB validation report for a publicly released PDB entry.  
We welcome your comments at [validation@mail.wwpdb.org](mailto:validation@mail.wwpdb.org)  
A user guide is available at <http://wwpdb.org/ValidationPDFNotes.html>

---

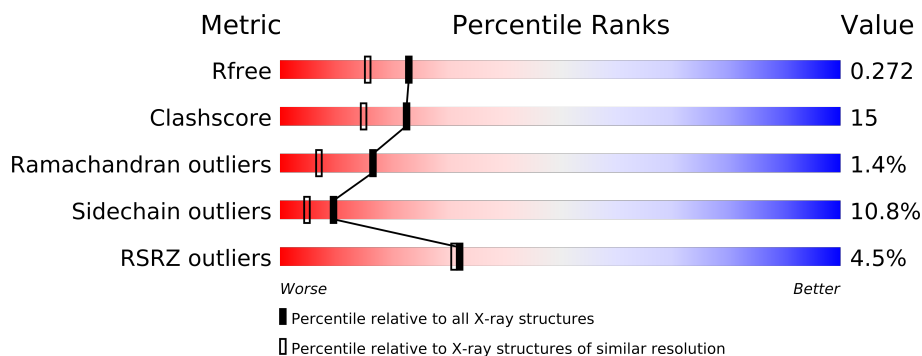
The following versions of software and data (see [references](#)) were used in the production of this report:

MolProbity : 4.02b-467  
Mogul : 1.15 2013  
Xtriage (Phenix) : dev-1323  
EDS : stable22639  
Percentile statistics : 21963  
Refmac : 5.8.0049  
CCP4 : 6.3.0 (Settle)  
Ideal geometry (proteins) : Engh & Huber (2001)  
Ideal geometry (DNA, RNA) : Parkinson et. al. (1996)  
Validation Pipeline (wwPDB-VP) : stable22683

# 1 Overall quality at a glance

The reported resolution of this entry is 2.00 Å.

Percentile scores (ranging between 0-100) for global validation metrics of the entry are shown in the following graphic. The table shows the number of entries on which the scores are based.



Metric	Whole archive (#Entries)	Similar resolution (#Entries, resolution range(Å))
$R_{free}$	66092	4888 (2.00-2.00)
Clashscore	79885	6188 (2.00-2.00)
Ramachandran outliers	78287	6102 (2.00-2.00)
Sidechain outliers	78261	6100 (2.00-2.00)
RSRZ outliers	66119	4890 (2.00-2.00)

The table below summarises the geometric issues observed across the polymeric chains and their fit to the electron density. The red, orange, yellow and green segments on the lower bar indicate the fraction of residues that contain outliers for  $\geq 3$ , 2, 1 and 0 types of geometric quality criteria. The upper red bar (where present) indicates the fraction of residues that have poor fit to the electron density.

Mol	Chain	Length	Quality of chain
1	L	212	
2	H	217	

## 2 Entry composition

There are 4 unique types of molecules in this entry. The entry contains 3507 atoms, of which 0 are hydrogen and 0 are deuterium.

In the tables below, the ZeroOcc column contains the number of atoms modelled with zero occupancy, the AltConf column contains the number of residues with at least one atom in alternate conformation and the Trace column contains the number of residues modelled with at most 2 atoms.

- Molecule 1 is a protein called IGG 5C8.

Mol	Chain	Residues	Atoms					ZeroOcc	AltConf	Trace
1	L	212	Total	C	N	O	S	0	0	0
			1625	1008	274	335	8			

There are 3 discrepancies between the modelled and reference sequences:

Chain	Residue	Modelled	Actual	Comment	Reference
L	32	ASN	TYR	CONFLICT	UNP P01837
L	94	SER	PHE	CONFLICT	UNP P01837
L	96	TYR	HIS	CONFLICT	UNP P01837

- Molecule 2 is a protein called IGG 5C8.

Mol	Chain	Residues	Atoms					ZeroOcc	AltConf	Trace
2	H	217	Total	C	N	O	S	46	0	0
			1626	1028	262	330	6			

There are 24 discrepancies between the modelled and reference sequences:

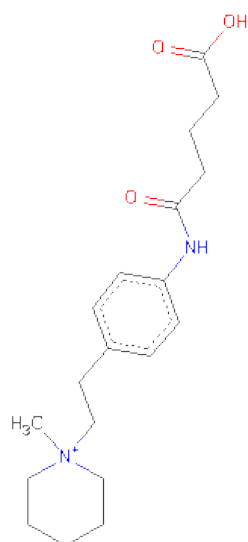
Chain	Residue	Modelled	Actual	Comment	Reference
H	3	GLN	LYS	CONFLICT	UNP P01869
H	5	GLN	LEU	CONFLICT	UNP P01869
H	6	GLN	GLU	CONFLICT	UNP P01869
H	14	PRO	SER	CONFLICT	UNP P01869
H	40	LYS	ARG	CONFLICT	UNP P01869
H	49	ALA	GLY	CONFLICT	UNP P01869
H	50	GLN	ARG	CONFLICT	UNP P01869
H	56	ASN	GLU	CONFLICT	UNP P01869
H	57	THR	ILE	CONFLICT	UNP P01869
H	66	LYS	THR	CONFLICT	UNP P01869
H	75	SER	THR	CONFLICT	UNP P01869
H	81	HIS	GLN	CONFLICT	UNP P01869
H	87	SER	THR	CONFLICT	UNP P01869

*Continued on next page...*

Continued from previous page...

Chain	Residue	Modelled	Actual	Comment	Reference
H	93	ALA	VAL	CONFLICT	UNP P01869
H	94	ALA	ARG	CONFLICT	UNP P01869
H	95	ASP	ARG	CONFLICT	UNP P01869
H	96	PRO	GLY	CONFLICT	UNP P01869
H	97	PRO	TYR	CONFLICT	UNP P01869
H	98	TYR	GLY	CONFLICT	UNP P01869
H	99	TYR	SER	CONFLICT	UNP P01869
H	100	GLY	SER	CONFLICT	UNP P01869
H	100A	HIS	GLN	CONFLICT	UNP P01869
H	100B	GLY	GLU	CONFLICT	UNP P01869
H	101	ASP	PRO	CONFLICT	UNP P01869

- Molecule 3 is N-METHYL-N-(PARA-GLUTARAMIDOPHENYL-ETHYL)-PIPERIDINIUM MION (three-letter code: GEP) (formula: C<sub>19</sub>H<sub>29</sub>N<sub>2</sub>O<sub>3</sub>).



Mol	Chain	Residues	Atoms				ZeroOcc	AltConf
3	L	1	Total	C	N	O	0	0
			24	19	2	3		

- Molecule 4 is water.

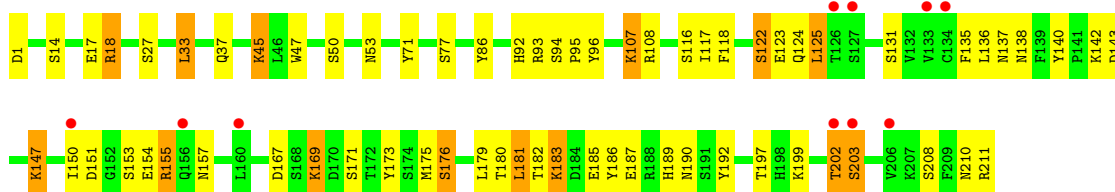
Mol	Chain	Residues	Atoms		ZeroOcc	AltConf
4	H	111	Total	O	0	0
			111	111		
4	L	121	Total	O	0	0
			121	121		

### 3 Residue-property plots

These plots are drawn for all protein, RNA and DNA chains in the entry. The first graphic for a chain summarises the proportions of errors displayed in the second graphic. The second graphic shows the sequence view annotated by issues in geometry and electron density. Residues are color-coded according to the number of geometric quality criteria for which they contain at least one outlier: green = 0, yellow = 1, orange = 2 and red = 3 or more. A red dot above a residue indicates a poor fit to the electron density ( $RSRZ > 2$ ). Stretches of 2 or more consecutive residues without any outlier are shown as a green connector. Residues present in the sample, but not in the model, are shown in grey.

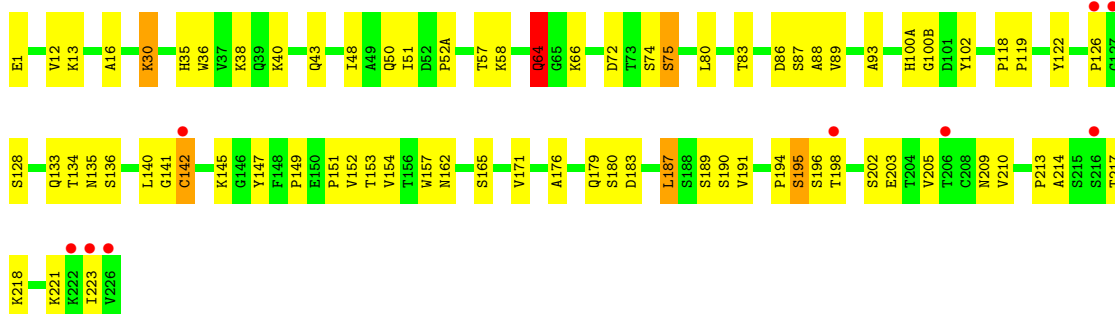
#### • Molecule 1: IGG 5C8

Chain L: 



#### • Molecule 2: IGG 5C8

Chain H: 



## 4 Data and refinement statistics

Property	Value	Source
Space group	C 1 2 1	Depositor
Cell constants a, b, c, $\alpha$ , $\beta$ , $\gamma$	112.00Å 80.00Å 64.90Å 90.00° 118.00° 90.00°	Depositor
Resolution (Å)	25.00 – 2.00 23.52 – 1.90	Depositor EDS
% Data completeness (in resolution range)	96.7 (25.00-2.00) 92.1 (23.52-1.90)	Depositor EDS
$R_{merge}$	(Not available)	Depositor
$R_{sym}$	0.06	Depositor
$\langle I/\sigma(I) \rangle$ <sup>1</sup>	2.19 (at 1.90Å)	Xtriage
Refinement program	X-PLOR 3.851	Depositor
R, $R_{free}$	0.229 , 0.292 0.220 , 0.272	Depositor DCC
$R_{free}$ test set	2437 reflections (7.58%)	DCC
Wilson B-factor (Å <sup>2</sup> )	30.5	Xtriage
Anisotropy	0.016	Xtriage
Bulk solvent $k_{sol}$ (e/Å <sup>3</sup> ), $B_{sol}$ (Å <sup>2</sup> )	0.34 , 63.5	EDS
Estimated twinning fraction	No twinning to report.	Xtriage
L-test for twinning	$\langle  L  \rangle = 0.48$ , $\langle L^2 \rangle = 0.31$	Xtriage
Outliers	1 of 38298 reflections (0.003%)	Xtriage
$F_o, F_c$ correlation	0.95	EDS
Total number of atoms	3507	wwPDB-VP
Average B, all atoms (Å <sup>2</sup> )	41.0	wwPDB-VP

Xtriage's analysis on translational NCS is as follows: *The largest off-origin peak in the Patterson function is 5.89% of the height of the origin peak. No significant pseudotranslation is detected.*

<sup>1</sup>Intensities estimated from amplitudes.

## 5 Model quality

### 5.1 Standard geometry

Bond lengths and bond angles in the following residue types are not validated in this section: GEP

The Z score for a bond length (or angle) is the number of standard deviations the observed value is removed from the expected value. A bond length (or angle) with  $|Z| > 5$  is considered an outlier worth inspection. RMSZ is the root-mean-square of all Z scores of the bond lengths (or angles).

Mol	Chain	Bond lengths		Bond angles	
		RMSZ	$\# Z  > 5$	RMSZ	$\# Z  > 5$
1	L	0.36	0/1664	0.60	0/2260
2	H	0.37	0/1671	0.63	0/2291
All	All	0.37	0/3335	0.62	0/4551

There are no bond length outliers.

There are no bond angle outliers.

There are no chirality outliers.

There are no planarity outliers.

### 5.2 Close contacts

In the following table, the Non-H and H(model) columns list the number of non-hydrogen atoms and hydrogen atoms in the chain respectively. The H(added) column lists the number of hydrogens added by MolProbity. The Clashes column lists the number of clashes within the asymmetric unit, and the number in parentheses is this value normalized per 1000 atoms of the molecule in the chain. The Symm-Clashes column gives symmetry related clashes, in the same way as for the Clashes column.

Mol	Chain	Non-H	H(model)	H(added)	Clashes	Symm-Clashes
1	L	1625	0	1548	49	0
2	H	1626	0	1571	48	0
3	L	24	0	28	2	0
4	H	111	0	0	2	0
4	L	121	0	0	2	0
All	All	3507	0	3147	94	0

Clashscore is defined as the number of clashes calculated for the entry per 1000 atoms (including hydrogens) of the entry. The overall clashscore for this entry is 15.

All (94) close contacts within the same asymmetric unit are listed below.

Atom-1	Atom-2	Distance(Å)	Clash(Å)
1:L:167:ASP:OD2	1:L:169:LYS:HG2	1.75	0.87
2:H:154:VAL:HG22	2:H:210:VAL:HG22	1.66	0.77
1:L:150:ILE:HD11	1:L:179:LEU:HD21	1.66	0.77
1:L:150:ILE:HD12	1:L:155:ARG:HG3	1.73	0.70
1:L:142:LYS:HG3	1:L:173:TYR:CD2	2.27	0.69
1:L:124:GLN:HE22	1:L:131:SER:CB	2.08	0.66
1:L:124:GLN:HE22	1:L:131:SER:HB2	1.59	0.66
1:L:18:ARG:HG3	1:L:18:ARG:HH11	1.60	0.65
1:L:182:THR:OG1	1:L:185:GLU:HG3	1.97	0.65
3:L:212:GEP:H12	3:L:212:GEP:O18	1.97	0.64
1:L:147:LYS:HD3	1:L:154:GLU:OE2	1.98	0.64
2:H:151:PRO:O	2:H:213:PRO:HD2	1.99	0.63
2:H:162:ASN:HD21	2:H:205:VAL:HA	1.64	0.62
2:H:198:THR:O	2:H:203:GLU:HB2	2.00	0.61
2:H:149:PRO:HD2	2:H:214:ALA:CB	2.31	0.60
1:L:45:LYS:HD3	1:L:47:TRP:HZ3	1.68	0.59
2:H:119:PRO:HB3	2:H:147:TYR:HB3	1.84	0.58
2:H:151:PRO:HD2	2:H:213:PRO:HG2	1.88	0.56
2:H:38:LYS:HB2	2:H:48:ILE:HD11	1.87	0.56
1:L:135:PHE:C	1:L:136:LEU:HD12	2.26	0.56
2:H:100(A):HIS:ND1	2:H:100(B):GLY:N	2.54	0.55
1:L:18:ARG:HG3	1:L:18:ARG:NH1	2.20	0.55
1:L:190:ASN:O	1:L:210:ASN:HA	2.07	0.54
2:H:126:PRO:HD3	2:H:140:LEU:HD23	1.89	0.54
2:H:35:HIS:HE1	2:H:50:GLN:HE21	1.54	0.54
1:L:94:SER:HA	1:L:95:PRO:C	2.28	0.54
1:L:182:THR:HG23	1:L:185:GLU:OE2	2.08	0.53
1:L:157:ASN:HB3	4:L:333:HOH:O	2.07	0.52
2:H:89:VAL:HG23	4:H:271:HOH:O	2.09	0.52
2:H:87:SER:O	2:H:88:ALA:HB2	2.10	0.52
2:H:171:VAL:HG23	2:H:191:VAL:HG23	1.94	0.50
2:H:153:THR:O	2:H:210:VAL:HA	2.11	0.50
2:H:93:ALA:HA	2:H:102:TYR:O	2.12	0.50
2:H:30:LYS:HA	2:H:52(A):PRO:HB2	1.92	0.50
1:L:167:ASP:OD2	1:L:169:LYS:CG	2.54	0.50
1:L:175:MET:HG2	1:L:176:SER:N	2.28	0.49
1:L:150:ILE:CD1	1:L:181:LEU:HD21	2.42	0.49
2:H:180:SER:O	2:H:183:ASP:HB2	2.13	0.48
2:H:142:CYS:N	2:H:189:SER:O	2.46	0.48
2:H:194:PRO:C	2:H:196:SER:H	2.17	0.48
2:H:51:ILE:HG13	2:H:57:THR:HG22	1.96	0.48
1:L:131:SER:OG	1:L:180:THR:HG22	2.15	0.47

*Continued on next page...*



*Continued from previous page...*

Atom-1	Atom-2	Distance(Å)	Clash(Å)
2:H:162:ASN:O	2:H:165:SER:HB2	2.15	0.47
2:H:157:TRP:HZ3	2:H:223:ILE:HG13	1.80	0.47
1:L:186:TYR:HA	1:L:192:TYR:OH	2.15	0.47
2:H:12:VAL:HG12	2:H:16:ALA:HB3	1.97	0.47
2:H:40:LYS:O	2:H:43:GLN:HB2	2.15	0.47
1:L:202:THR:HG23	1:L:203:SER:H	1.80	0.46
1:L:123:GLU:HG2	2:H:122:TYR:CD1	2.50	0.46
1:L:14:SER:O	1:L:17:GLU:HB2	2.16	0.46
1:L:117:ILE:HG12	1:L:118:PHE:N	2.30	0.46
2:H:72:ASP:OD2	2:H:75:SER:OG	2.31	0.45
2:H:64:GLN:H	2:H:64:GLN:HG3	1.36	0.45
2:H:179:GLN:O	2:H:180:SER:HB3	2.17	0.45
1:L:180:THR:HG21	2:H:145:LYS:NZ	2.32	0.45
2:H:51:ILE:O	2:H:52(A):PRO:HD3	2.17	0.45
1:L:136:LEU:N	1:L:136:LEU:HD12	2.32	0.45
2:H:12:VAL:HG12	2:H:13:LYS:N	2.32	0.45
1:L:147:LYS:HD3	1:L:154:GLU:CD	2.37	0.44
1:L:96:TYR:CE2	2:H:50:GLN:NE2	2.86	0.44
1:L:33:LEU:HD22	1:L:71:TYR:CG	2.52	0.44
1:L:210:ASN:O	1:L:211:ARG:HB2	2.17	0.44
2:H:141:GLY:HA2	2:H:190:SER:HA	1.98	0.44
1:L:123:GLU:HG2	2:H:122:TYR:CE1	2.53	0.44
1:L:92:HIS:CD2	1:L:93:ARG:HG2	2.53	0.44
1:L:167:ASP:O	1:L:171:SER:HA	2.17	0.44
2:H:162:ASN:CB	2:H:165:SER:HB2	2.48	0.44
1:L:37:GLN:HG3	1:L:86:TYR:CE2	2.53	0.43
1:L:151:ASP:OD2	1:L:189:HIS:HD2	2.00	0.43
1:L:142:LYS:HG3	1:L:173:TYR:CG	2.53	0.43
1:L:202:THR:HG23	1:L:203:SER:N	2.32	0.43
2:H:187:LEU:C	2:H:187:LEU:HD23	2.39	0.43
2:H:35:HIS:ND1	2:H:50:GLN:HB2	2.33	0.43
1:L:183:LYS:H	1:L:183:LYS:HG3	1.34	0.43
2:H:36:TRP:CE2	2:H:80:LEU:HB2	2.54	0.42
2:H:83:THR:O	2:H:86:ASP:HB2	2.18	0.42
2:H:50:GLN:OE1	2:H:58:LYS:HD2	2.20	0.42
2:H:12:VAL:CG1	2:H:16:ALA:HB3	2.49	0.42
1:L:122:SER:HA	1:L:125:LEU:HB2	2.01	0.42
3:L:212:GEP:C12	3:L:212:GEP:O18	2.64	0.42
1:L:137:ASN:HB2	4:L:303:HOH:O	2.19	0.42
1:L:96:TYR:HE2	2:H:50:GLN:NE2	2.16	0.42
1:L:33:LEU:HD22	1:L:71:TYR:CD2	2.54	0.42
1:L:147:LYS:HE3	1:L:154:GLU:OE1	2.19	0.42

*Continued on next page...*

*Continued from previous page...*

Atom-1	Atom-2	Distance(Å)	Clash(Å)
2:H:118:PRO:HB3	2:H:217:THR:HG21	2.03	0.41
2:H:176:ALA:HA	2:H:187:LEU:HB2	2.01	0.41
1:L:107:LYS:HA	1:L:140:TYR:OH	2.20	0.41
1:L:187:GLU:H	1:L:187:GLU:HG2	1.60	0.41
2:H:35:HIS:CE1	2:H:50:GLN:HG3	2.55	0.41
2:H:30:LYS:HB3	4:H:251:HOH:O	2.20	0.41
1:L:50:SER:HB2	1:L:53:ASN:ND2	2.36	0.41
2:H:149:PRO:HD2	2:H:214:ALA:HB3	2.02	0.41
1:L:169:LYS:HG2	1:L:169:LYS:H	1.77	0.40
1:L:190:ASN:HB2	1:L:211:ARG:H	1.86	0.40

There are no symmetry-related clashes.

## 5.3 Torsion angles

### 5.3.1 Protein backbone ⓘ

In the following table, the Percentiles column shows the percent Ramachandran outliers of the chain as a percentile score with respect to all X-ray entries followed by that with respect to entries of similar resolution. The Analysed column shows the number of residues for which the backbone conformation was analysed, and the total number of residues.

Mol	Chain	Analysed	Favoured	Allowed	Outliers	Percentiles	
1	L	210/212 (99%)	199 (95%)	10 (5%)	1 (0%)	38	29
2	H	215/217 (99%)	197 (92%)	13 (6%)	5 (2%)	10	3
All	All	425/429 (99%)	396 (93%)	23 (5%)	6 (1%)	16	7

All (6) Ramachandran outliers are listed below:

Mol	Chain	Res	Type
2	H	128	SER
2	H	135	ASN
1	L	138	ASN
2	H	64	GLN
2	H	195	SER
2	H	134	THR

### 5.3.2 Protein sidechains ⓘ

In the following table, the Percentiles column shows the percent sidechain outliers of the chain as a percentile score with respect to all X-ray entries followed by that with respect to entries of similar resolution. The Analysed column shows the number of residues for which the sidechain conformation was analysed, and the total number of residues.

Mol	Chain	Analysed	Rotameric	Outliers	Percentiles	
1	L	186/186 (100%)	162 (87%)	24 (13%)	6	3
2	H	184/184 (100%)	168 (91%)	16 (9%)	15	8
All	All	370/370 (100%)	330 (89%)	40 (11%)	9	5

All (40) residues with a non-rotameric sidechain are listed below:

Mol	Chain	Res	Type
1	L	1	ASP
1	L	18	ARG
1	L	27	SER
1	L	33	LEU
1	L	45	LYS
1	L	77	SER
1	L	107	LYS
1	L	108	ARG
1	L	116	SER
1	L	122	SER
1	L	125	LEU
1	L	143	ASP
1	L	147	LYS
1	L	153	SER
1	L	155	ARG
1	L	169	LYS
1	L	176	SER
1	L	181	LEU
1	L	183	LYS
1	L	197	THR
1	L	199	LYS
1	L	202	THR
1	L	203	SER
1	L	208	SER
2	H	1	GLU
2	H	30	LYS
2	H	64	GLN
2	H	66	LYS
2	H	74	SER

*Continued on next page...*

*Continued from previous page...*

Mol	Chain	Res	Type
2	H	75	SER
2	H	133	GLN
2	H	136	SER
2	H	142	CYS
2	H	152	VAL
2	H	187	LEU
2	H	195	SER
2	H	202	SER
2	H	209	ASN
2	H	218	LYS
2	H	221	LYS

Some sidechains can be flipped to improve hydrogen bonding and reduce clashes. All (4) such sidechains are listed below:

Mol	Chain	Res	Type
1	L	32	ASN
1	L	124	GLN
1	L	137	ASN
2	H	50	GLN

### 5.3.3 RNA ⓘ

There are no RNA chains in this entry.

## 5.4 Non-standard residues in protein, DNA, RNA chains ⓘ

There are no non-standard protein/DNA/RNA residues in this entry.

## 5.5 Carbohydrates ⓘ

There are no carbohydrates in this entry.

## 5.6 Ligand geometry ⓘ

1 ligand is modelled in this entry.

In the following table, the Counts columns list the number of bonds (or angles) for which Mogul statistics could be retrieved, the number of bonds (or angles) that are observed in the model and the number of bonds (or angles) that are defined in the chemical component dictionary. The Link

column lists molecule types, if any, to which the group is linked. The Z score for a bond length (or angle) is the number of standard deviations the observed value is removed from the expected value. A bond length (or angle) with  $|Z| > 2$  is considered an outlier worth inspection. RMSZ is the root-mean-square of all Z scores of the bond lengths (or angles).

Mol	Type	Chain	Res	Link	Bond lengths			Bond angles		
					Counts	RMSZ	$\# Z  > 2$	Counts	RMSZ	$\# Z  > 2$
3	GEP	L	212	-	25,25,25	1.02	1 (4%)	33,33,33	1.17	3 (9%)

In the following table, the Chirals column lists the number of chiral outliers, the number of chiral centers analysed, the number of these observed in the model and the number defined in the chemical component dictionary. Similar counts are reported in the Torsion and Rings columns. '-' means no outliers of that kind were identified.

Mol	Type	Chain	Res	Link	Chirals	Torsions	Rings
3	GEP	L	212	-	-	0/16/26/26	0/2/2/2

All (1) bond length outliers are listed below:

Mol	Chain	Res	Type	Atoms	Z	Observed(Å)	Ideal(Å)
3	L	212	GEP	C13-N16	3.29	1.48	1.41

All (3) bond angle outliers are listed below:

Mol	Chain	Res	Type	Atoms	Z	Observed(°)	Ideal(°)
3	L	212	GEP	C19-C17-N16	3.16	120.15	114.48
3	L	212	GEP	C3-C2-N1	-2.92	109.70	112.61
3	L	212	GEP	C13-N16-C17	-2.61	122.79	127.60

There are no chirality outliers.

There are no torsion outliers.

There are no ring outliers.

## 5.7 Other polymers ⓘ

There are no such residues in this entry.

## 5.8 Polymer linkage issues

There are no chain breaks in this entry.

## 6 Fit of model and data ⓘ

### 6.1 Protein, DNA and RNA chains ⓘ

In the following table, the column labelled ‘#RSRZ> 2’ contains the number (and percentage) of RSRZ outliers, followed by percent RSRZ outliers for the chain as percentile scores relative to all X-ray entries and entries of similar resolution. The OWAB column contains the minimum, median, 95<sup>th</sup> percentile and maximum values of the occupancy-weighted average B-factor per residue. The column labelled ‘Q< 0.9’ lists the number of (and percentage) of residues with an average occupancy less than 0.9.

Mol	Chain	Analysed	<RSRZ>	#RSRZ>2	OWAB(Å <sup>2</sup> )	Q<0.9
1	L	212/212 (100%)	0.11	10 (4%) 30 29	18, 38, 71, 99	0
2	H	210/217 (96%)	0.01	9 (4%) 34 32	14, 34, 75, 84	0
All	All	422/429 (98%)	0.06	19 (4%) 32 31	14, 36, 73, 99	0

All (19) RSRZ outliers are listed below:

Mol	Chain	Res	Type	RSRZ
1	L	203	SER	3.8
2	H	223	ILE	3.2
2	H	216	SER	3.1
1	L	202	THR	2.9
2	H	226	VAL	2.9
1	L	160	LEU	2.7
1	L	156	GLN	2.7
1	L	150	ILE	2.6
2	H	126	PRO	2.6
1	L	127	SER	2.5
2	H	206	THR	2.3
1	L	126	THR	2.2
1	L	206	VAL	2.2
1	L	134	CYS	2.1
1	L	133	VAL	2.1
2	H	198	THR	2.1
2	H	222	LYS	2.1
2	H	142	CYS	2.0
2	H	127	GLY	2.0

### 6.2 Non-standard residues in protein, DNA, RNA chains ⓘ

There are no non-standard protein/DNA/RNA residues in this entry.

### 6.3 Carbohydrates

There are no carbohydrates in this entry.

### 6.4 Ligands

In the following table, the Atoms column lists the number of modelled atoms in the group and the number defined in the chemical component dictionary. LLDF column lists the quality of electron density of the group with respect to its neighbouring residues in protein, DNA or RNA chains. The B-factors column lists the minimum, median, 95<sup>th</sup> percentile and maximum values of B factors of atoms in the group. The column labelled 'Q< 0.9' lists the number of atoms with occupancy less than 0.9.

Mol	Type	Chain	Res	Atoms	RSR	LLDF	B-factors( $\text{\AA}^2$ )	Q<0.9
3	GEP	L	212	24/24	0.14	-	18,23,38,42	0

### 6.5 Other polymers

There are no such residues in this entry.