



Full wwPDB X-ray Structure Validation Report

Mar 1, 2014 – 03:56 AM GMT

PDB ID : 2A01
Title : Crystal Structure of Lipid-free Human Apolipoprotein A-I
Authors : Ajees, A.A.; Anantharamaiah, G.M.; Mishra, V.K.; Hussain, M.M.; Murthy, K.H.M.
Deposited on : 2005-06-15
Resolution : 2.40 Å(reported)

This is a full wwPDB validation report for a publicly released PDB entry.
We welcome your comments at validation@mail.wwpdb.org
A user guide is available at <http://wwpdb.org/ValidationPDFNotes.html>

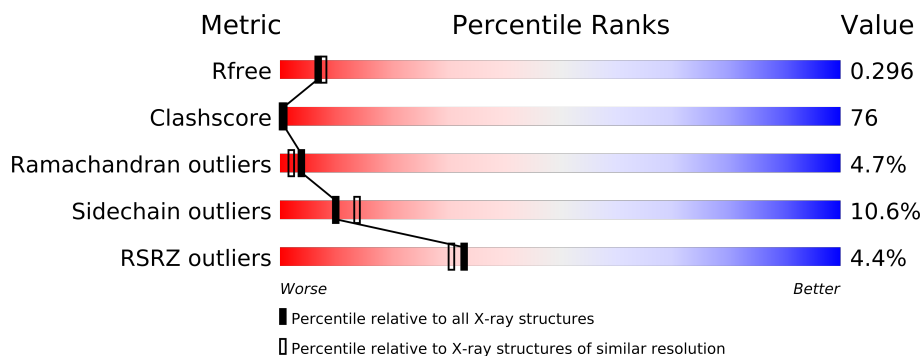
The following versions of software and data (see [references](#)) were used in the production of this report:

MolProbity : 4.02b-467
Mogul : 1.15 2013
Xtriage (Phenix) : dev-1323
EDS : stable22639
Percentile statistics : 21963
Refmac : 5.8.0049
CCP4 : 6.3.0 (Settle)
Ideal geometry (proteins) : Engh & Huber (2001)
Ideal geometry (DNA, RNA) : Parkinson et. al. (1996)
Validation Pipeline (wwPDB-VP) : stable22683

1 Overall quality at a glance

The reported resolution of this entry is 2.40 Å.

Percentile scores (ranging between 0-100) for global validation metrics of the entry are shown in the following graphic. The table shows the number of entries on which the scores are based.



Metric	Whole archive (#Entries)	Similar resolution (#Entries, resolution range(Å))
R_{free}	66092	2207 (2.40-2.40)
Clashscore	79885	2789 (2.40-2.40)
Ramachandran outliers	78287	2736 (2.40-2.40)
Sidechain outliers	78261	2737 (2.40-2.40)
RSRZ outliers	66119	2210 (2.40-2.40)

The table below summarises the geometric issues observed across the polymeric chains and their fit to the electron density. The red, orange, yellow and green segments on the lower bar indicate the fraction of residues that contain outliers for ≥ 3 , 2, 1 and 0 types of geometric quality criteria. The upper red bar (where present) indicates the fraction of residues that have poor fit to the electron density.

Mol	Chain	Length	Quality of chain
1	A	243	
1	B	243	
1	C	243	

2 Entry composition i

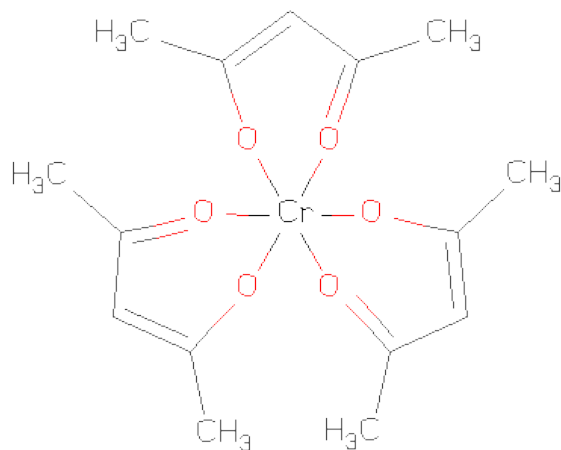
There are 3 unique types of molecules in this entry. The entry contains 6628 atoms, of which 0 are hydrogen and 0 are deuterium.

In the tables below, the ZeroOcc column contains the number of atoms modelled with zero occupancy, the AltConf column contains the number of residues with at least one atom in alternate conformation and the Trace column contains the number of residues modelled with at most 2 atoms.

- Molecule 1 is a protein called Apolipoprotein A-I.

Mol	Chain	Residues	Atoms					ZeroOcc	AltConf	Trace
1	A	243	Total	C	N	O	S	0	0	0
			1979	1241	347	388	3			
1	B	243	Total	C	N	O	S	0	0	0
			1979	1241	347	388	3			
1	C	243	Total	C	N	O	S	0	0	0
			1979	1241	347	388	3			

- Molecule 2 is TRISACETYLACETONATOCHROMIUM(III) (three-letter code: AC9) (formula: $\text{C}_{15}\text{H}_{21}\text{CrO}_6$).



Mol	Chain	Residues	Atoms				ZeroOcc	AltConf
2	A	1	Total	C	Cr	O	0	0
			22	15	1	6		
2	A	1	Total	C	Cr	O	0	0
			22	15	1	6		
2	B	1	Total	C	Cr	O	0	0
			22	15	1	6		

Continued on next page...

Continued from previous page...

Mol	Chain	Residues	Atoms				ZeroOcc	AltConf
2	B	1	Total	C	Cr	O	0	0
			22	15	1	6		
2	B	1	Total	C	Cr	O	0	0
			22	15	1	6		
2	C	1	Total	C	Cr	O	0	0
			22	15	1	6		
2	C	1	Total	C	Cr	O	0	0
			22	15	1	6		

- Molecule 3 is water.

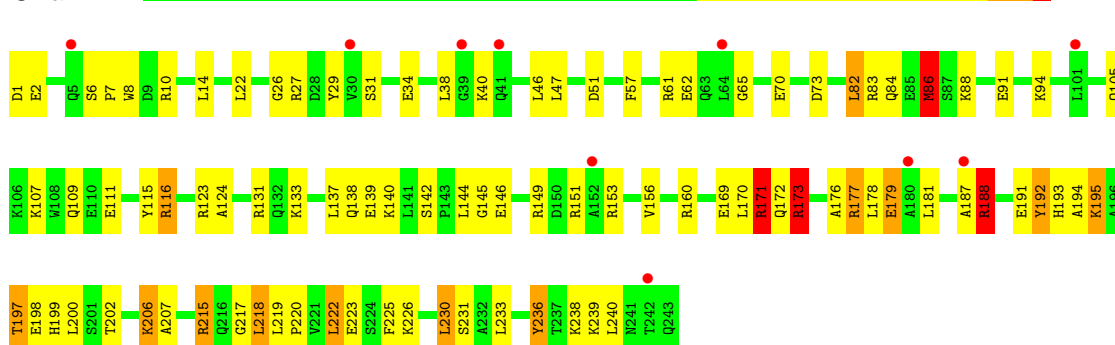
Mol	Chain	Residues	Atoms		ZeroOcc	AltConf
3	A	117	Total	O	0	0
			117	117		
3	B	190	Total	O	0	0
			190	190		
3	C	230	Total	O	0	0
			230	230		

3 Residue-property plots

These plots are drawn for all protein, RNA and DNA chains in the entry. The first graphic for a chain summarises the proportions of errors displayed in the second graphic. The second graphic shows the sequence view annotated by issues in geometry and electron density. Residues are color-coded according to the number of geometric quality criteria for which they contain at least one outlier: green = 0, yellow = 1, orange = 2 and red = 3 or more. A red dot above a residue indicates a poor fit to the electron density ($RSRZ > 2$). Stretches of 2 or more consecutive residues without any outlier are shown as a green connector. Residues present in the sample, but not in the model, are shown in grey.

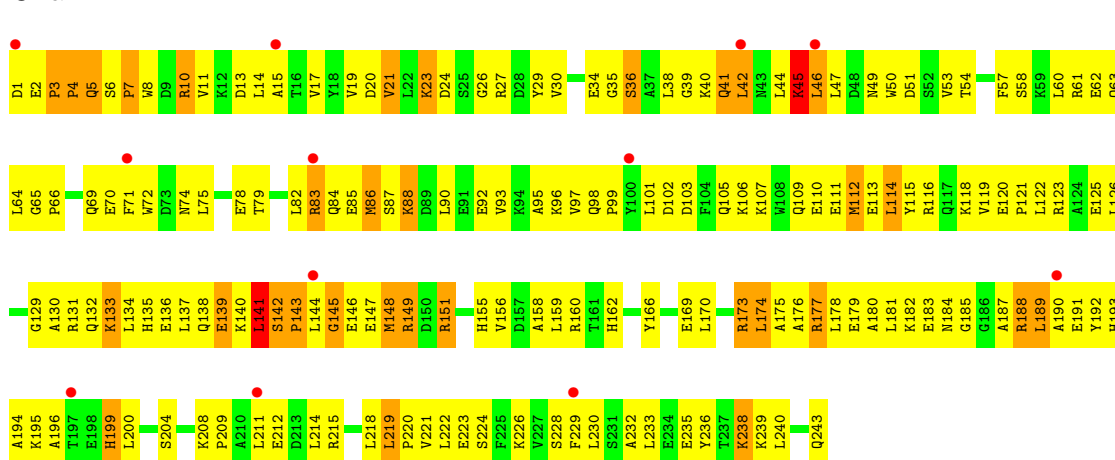
• Molecule 1: Apolipoprotein A-I

Chain A:



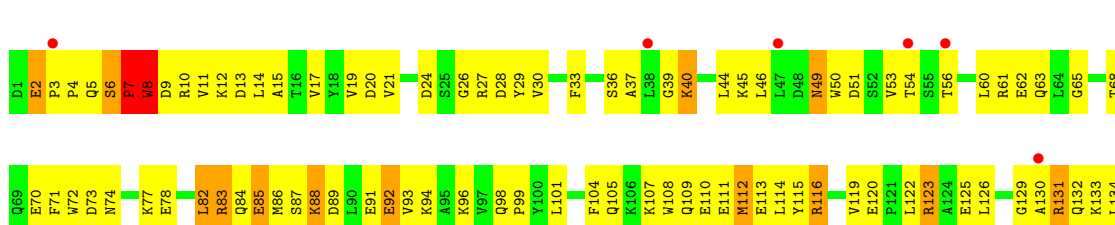
• Molecule 1: Apolipoprotein A-I

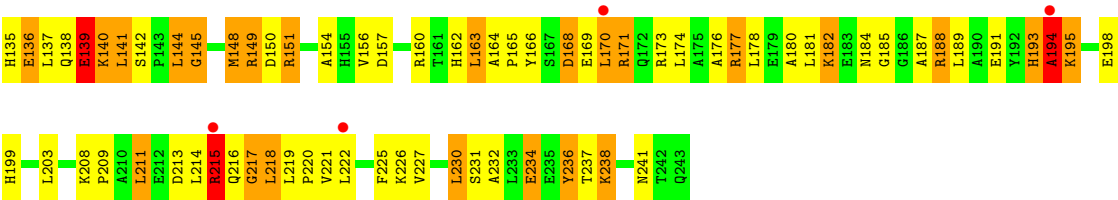
Chain B:



• Molecule 1: Apolipoprotein A-I

Chain C:





4 Data and refinement statistics

Property	Value	Source
Space group	P 43	Depositor
Cell constants a, b, c, α , β , γ	127.78Å 127.78Å 130.13Å 90.00° 90.00° 90.00°	Depositor
Resolution (Å)	91.20 – 2.40 29.57 – 2.35	Depositor EDS
% Data completeness (in resolution range)	100.0 (91.20-2.40) 100.0 (29.57-2.35)	Depositor EDS
R_{merge}	0.06	Depositor
R_{sym}	0.06	Depositor
$\langle I/\sigma(I) \rangle$ ¹	2.77 (at 2.36Å)	Xtriage
Refinement program	CNS 1.1	Depositor
R, R_{free}	0.228 , 0.249 0.280 , 0.296	Depositor DCC
R_{free} test set	4677 reflections (5.39%)	DCC
Wilson B-factor (Å ²)	36.1	Xtriage
Anisotropy	0.052	Xtriage
Bulk solvent k_{sol} (e/Å ³), B_{sol} (Å ²)	0.33 , 131.6	EDS
Estimated twinning fraction	0.008 for -h,-l,-k 0.001 for -h,l,k 0.001 for l,-k,h 0.009 for -l,-k,-h 0.027 for h,-k,-l	Xtriage
L-test for twinning	$\langle L \rangle = 0.50$, $\langle L^2 \rangle = 0.34$	Xtriage
Outliers	0 of 86817 reflections	Xtriage
F_o, F_c correlation	0.84	EDS
Total number of atoms	6628	wwPDB-VP
Average B, all atoms (Å ²)	30.0	wwPDB-VP

Xtriage's analysis on translational NCS is as follows: *The largest off-origin peak in the Patterson function is 2.65% of the height of the origin peak. No significant pseudotranslation is detected.*

¹Intensities estimated from amplitudes.

5 Model quality

5.1 Standard geometry

Bond lengths and bond angles in the following residue types are not validated in this section: AC9

The Z score for a bond length (or angle) is the number of standard deviations the observed value is removed from the expected value. A bond length (or angle) with $|Z| > 5$ is considered an outlier worth inspection. RMSZ is the root-mean-square of all Z scores of the bond lengths (or angles).

Mol	Chain	Bond lengths		Bond angles	
		RMSZ	# $ Z > 5$	RMSZ	# $ Z > 5$
1	A	0.70	0/2014	1.17	22/2714 (0.8%)
1	B	0.37	0/2014	1.05	19/2714 (0.7%)
1	C	0.37	0/2014	1.14	32/2714 (1.2%)
All	All	0.50	0/6042	1.12	73/8142 (0.9%)

Chiral center outliers are detected by calculating the chiral volume of a chiral center and verifying if the center is modelled as a planar moiety or with the opposite hand. A planarity outlier is detected by checking planarity of atoms in a peptide group, atoms in a mainchain group or atoms of a sidechain that are expected to be planar.

Mol	Chain	#Chirality outliers	#Planarity outliers
1	B	0	1

There are no bond length outliers.

All (73) bond angle outliers are listed below:

Mol	Chain	Res	Type	Atoms	Z	Observed(°)	Ideal(°)
1	C	194	ALA	N-CA-C	7.30	130.70	111.00
1	C	123	ARG	NE-CZ-NH2	7.10	123.85	120.30
1	C	188	ARG	NE-CZ-NH1	7.04	123.82	120.30
1	B	10	ARG	NE-CZ-NH2	7.03	123.81	120.30
1	C	193	HIS	C-N-CA	6.89	138.94	121.70
1	B	177	ARG	NE-CZ-NH2	6.87	123.73	120.30
1	C	215	ARG	NE-CZ-NH2	6.86	123.73	120.30
1	C	131	ARG	NE-CZ-NH1	6.80	123.70	120.30
1	C	83	ARG	NE-CZ-NH1	6.78	123.69	120.30
1	B	83	ARG	NE-CZ-NH1	6.74	123.67	120.30
1	C	61	ARG	NE-CZ-NH1	6.58	123.59	120.30
1	C	177	ARG	CD-NE-CZ	6.49	132.69	123.60
1	B	160	ARG	NE-CZ-NH1	6.47	123.54	120.30

Continued on next page...

Continued from previous page...

Mol	Chain	Res	Type	Atoms	Z	Observed(°)	Ideal(°)
1	C	149	ARG	NE-CZ-NH1	6.47	123.53	120.30
1	C	171	ARG	NE-CZ-NH1	6.43	123.52	120.30
1	C	151	ARG	NE-CZ-NH2	6.34	123.47	120.30
1	B	188	ARG	NE-CZ-NH1	6.28	123.44	120.30
1	A	29	TYR	CB-CG-CD2	6.23	124.74	121.00
1	C	116	ARG	NE-CZ-NH2	6.20	123.40	120.30
1	C	10	ARG	NE-CZ-NH2	6.19	123.40	120.30
1	B	145	GLY	N-CA-C	-6.15	97.73	113.10
1	B	5	GLN	N-CA-C	6.13	127.54	111.00
1	B	149	ARG	NE-CZ-NH2	6.12	123.36	120.30
1	B	215	ARG	NE-CZ-NH2	6.11	123.35	120.30
1	A	27	ARG	NE-CZ-NH1	5.97	123.28	120.30
1	C	10	ARG	CD-NE-CZ	5.96	131.94	123.60
1	C	7	PRO	C-N-CA	5.95	136.57	121.70
1	A	10	ARG	NE-CZ-NH1	5.89	123.24	120.30
1	A	215	ARG	NE-CZ-NH1	5.89	123.24	120.30
1	C	7	PRO	O-C-N	-5.88	113.29	122.70
1	A	61	ARG	NE-CZ-NH1	5.87	123.23	120.30
1	A	173	ARG	NE-CZ-NH1	5.86	123.23	120.30
1	A	131	ARG	NE-CZ-NH1	5.82	123.21	120.30
1	B	215	ARG	N-CA-CB	-5.81	100.14	110.60
1	A	160	ARG	NE-CZ-NH1	5.81	123.20	120.30
1	A	116	ARG	NE-CZ-NH1	5.80	123.20	120.30
1	A	151	ARG	NE-CZ-NH1	5.79	123.20	120.30
1	A	218	LEU	N-CA-C	5.77	126.59	111.00
1	A	149	ARG	NE-CZ-NH1	5.76	123.18	120.30
1	A	123	ARG	NE-CZ-NH1	5.75	123.17	120.30
1	A	177	ARG	NE-CZ-NH1	5.75	123.17	120.30
1	B	141	LEU	C-N-CA	5.72	136.01	121.70
1	A	153	ARG	NE-CZ-NH1	5.71	123.15	120.30
1	A	83	ARG	NE-CZ-NH1	5.68	123.14	120.30
1	B	149	ARG	CD-NE-CZ	5.66	131.52	123.60
1	A	171	ARG	NE-CZ-NH1	5.65	123.12	120.30
1	C	194	ALA	O-C-N	-5.55	113.82	122.70
1	C	116	ARG	CD-NE-CZ	5.53	131.34	123.60
1	A	86	MET	CA-CB-CG	5.52	122.69	113.30
1	B	215	ARG	CD-NE-CZ	5.51	131.32	123.60
1	B	145	GLY	CA-C-O	5.46	130.42	120.60
1	B	188	ARG	CD-NE-CZ	5.45	131.23	123.60
1	A	188	ARG	NE-CZ-NH1	5.44	123.02	120.30
1	C	171	ARG	CD-NE-CZ	5.40	131.16	123.60
1	C	149	ARG	CD-NE-CZ	5.35	131.08	123.60

Continued on next page...

Continued from previous page...

Mol	Chain	Res	Type	Atoms	Z	Observed(°)	Ideal(°)
1	C	217	GLY	N-CA-C	5.29	126.33	113.10
1	C	151	ARG	CD-NE-CZ	5.26	130.97	123.60
1	B	215	ARG	N-CA-C	5.25	125.18	111.00
1	B	160	ARG	CD-NE-CZ	5.25	130.95	123.60
1	C	194	ALA	N-CA-CB	-5.22	102.79	110.10
1	C	123	ARG	CD-NE-CZ	5.19	130.86	123.60
1	A	188	ARG	CD-NE-CZ	5.16	130.83	123.60
1	C	61	ARG	CD-NE-CZ	5.16	130.83	123.60
1	B	177	ARG	CD-NE-CZ	5.13	130.78	123.60
1	C	8	TRP	N-CA-C	5.09	124.74	111.00
1	A	177	ARG	CD-NE-CZ	5.08	130.71	123.60
1	C	131	ARG	CD-NE-CZ	5.07	130.70	123.60
1	C	145	GLY	C-N-CA	5.06	134.36	121.70
1	B	83	ARG	CD-NE-CZ	5.06	130.69	123.60
1	C	215	ARG	CD-NE-CZ	5.06	130.68	123.60
1	C	140	LYS	N-CA-C	5.03	124.58	111.00
1	C	83	ARG	CD-NE-CZ	5.03	130.64	123.60
1	A	217	GLY	C-N-CA	5.02	134.25	121.70

There are no chirality outliers.

All (1) planarity outliers are listed below:

Mol	Chain	Res	Type	Group
1	B	35	GLY	Mainchain

5.2 Close contacts ⓘ

In the following table, the Non-H and H(model) columns list the number of non-hydrogen atoms and hydrogen atoms in the chain respectively. The H(added) column lists the number of hydrogens added by MolProbity. The Clashes column lists the number of clashes within the asymmetric unit, and the number in parentheses is this value normalized per 1000 atoms of the molecule in the chain. The Symm-Clashes column gives symmetry related clashes, in the same way as for the Clashes column.

Mol	Chain	Non-H	H(model)	H(added)	Clashes	Symm-Clashes
1	A	1979	0	1968	109	16
1	B	1979	0	1967	435	5
1	C	1979	0	1968	390	2
2	A	44	0	42	13	0
2	B	66	0	63	60	0
2	C	44	0	42	24	0

Continued on next page...

Continued from previous page...

Mol	Chain	Non-H	H(model)	H(added)	Clashes	Symm-Clashes
3	A	117	0	0	39	2
3	B	190	0	0	69	11
3	C	230	0	0	80	0
All	All	6628	0	6050	921	18

Clashscore is defined as the number of clashes calculated for the entry per 1000 atoms (including hydrogens) of the entry. The overall clashscore for this entry is 76.

All (921) close contacts within the same asymmetric unit are listed below.

Atom-1	Atom-2	Distance(Å)	Clash(Å)
1:C:4:PRO:HA	1:C:86:MET:SD	1.29	1.69
1:B:8:TRP:CE3	1:B:11:VAL:HG21	1.31	1.62
1:B:92:GLU:CG	1:B:189:LEU:HD23	1.25	1.61
1:C:237:THR:HB	1:C:238:LYS:NZ	1.18	1.46
1:B:211:LEU:HD12	1:B:221:VAL:CG1	1.50	1.41
1:B:8:TRP:CE3	1:B:11:VAL:CG2	2.05	1.40
1:B:122:LEU:HD12	1:B:162:HIS:CB	1.53	1.38
1:C:214:LEU:CD2	1:C:216:GLN:HE21	1.35	1.37
1:C:8:TRP:CB	1:C:12:LYS:HE3	1.55	1.36
1:B:219:LEU:CG	1:C:226:LYS:HE3	1.55	1.35
1:A:171:ARG:NH1	1:A:172:GLN:HB2	1.38	1.35
1:B:8:TRP:CZ3	1:B:11:VAL:HG21	1.60	1.34
1:B:92:GLU:CG	1:B:189:LEU:CD2	2.08	1.32
1:C:36:SER:O	1:C:40:LYS:HB2	1.30	1.32
1:C:4:PRO:CA	1:C:86:MET:SD	2.18	1.31
1:B:92:GLU:HG2	1:B:189:LEU:CD2	1.58	1.31
1:C:56:THR:O	1:C:60:LEU:HD23	1.23	1.30
1:C:163:LEU:O	1:C:163:LEU:HD13	1.25	1.29
1:B:3:PRO:HB2	1:B:4:PRO:CD	1.58	1.26
1:C:13:ASP:O	1:C:17:VAL:HG23	1.31	1.26
1:B:173:ARG:NH2	1:B:173:ARG:HB3	1.48	1.26
1:B:226:LYS:O	1:B:230:LEU:HD13	1.32	1.26
1:C:170:LEU:O	1:C:174:LEU:HD13	1.12	1.24
1:B:36:SER:O	1:B:40:LYS:HD3	1.26	1.24
1:C:26:GLY:O	1:C:30:VAL:HG23	1.35	1.24
1:B:46:LEU:HD12	1:B:50:TRP:CG	1.73	1.23
1:B:211:LEU:CD1	1:B:221:VAL:HG13	1.68	1.22
1:C:53:VAL:CG1	1:C:123:ARG:CD	2.17	1.22
1:B:174:LEU:HD12	1:B:175:ALA:N	1.57	1.19
1:B:83:ARG:CZ	1:B:84:GLN:HE22	1.53	1.19
1:B:44:LEU:CD2	1:B:47:LEU:HD12	1.72	1.18
1:C:237:THR:CB	1:C:238:LYS:HZ2	1.57	1.18

Continued on next page...

Continued from previous page...

Atom-1	Atom-2	Distance(Å)	Clash(Å)
1:C:110:GLU:O	1:C:114:LEU:HD13	1.39	1.18
1:C:150:ASP:O	1:C:154:ALA:HB2	1.42	1.18
1:B:44:LEU:HD23	1:B:47:LEU:CD1	1.73	1.17
1:B:83:ARG:NH1	1:B:84:GLN:HE22	1.41	1.17
1:C:8:TRP:HB2	1:C:12:LYS:CE	1.75	1.15
1:A:226:LYS:HD2	1:C:219:LEU:HD13	1.23	1.14
1:B:114:LEU:HD11	1:B:118:LYS:HE3	1.20	1.14
1:C:82:LEU:HG	1:C:86:MET:HE1	1.26	1.14
1:B:3:PRO:CB	1:B:4:PRO:HD3	1.77	1.14
1:B:139:GLU:OE2	1:B:141:LEU:HD22	1.46	1.14
1:A:226:LYS:HD2	1:C:219:LEU:CD1	1.77	1.14
1:C:53:VAL:HG11	1:C:123:ARG:NE	1.61	1.14
1:C:15:ALA:O	1:C:19:VAL:HG22	1.48	1.14
1:B:46:LEU:HD12	1:B:50:TRP:CD1	1.83	1.13
1:B:46:LEU:HD12	1:B:50:TRP:CB	1.78	1.13
1:B:46:LEU:CD1	1:B:50:TRP:CD1	2.32	1.13
1:B:219:LEU:HG	1:C:226:LYS:HE3	1.17	1.13
1:B:195:LYS:HD3	2:B:604:AC9:H2	1.14	1.12
1:C:53:VAL:CG1	1:C:123:ARG:HD2	1.77	1.12
1:B:97:VAL:HG12	1:B:101:LEU:CD1	1.79	1.12
1:B:122:LEU:CD1	1:B:162:HIS:HB3	1.78	1.12
1:A:171:ARG:HH11	1:A:172:GLN:CB	1.62	1.12
1:C:82:LEU:HD23	1:C:86:MET:HB3	1.32	1.11
1:C:237:THR:CB	1:C:238:LYS:NZ	2.10	1.11
1:B:3:PRO:CB	1:B:4:PRO:CD	2.27	1.11
1:C:144:LEU:HD23	1:C:144:LEU:H	1.14	1.10
1:B:46:LEU:CD1	1:B:50:TRP:CG	2.34	1.10
1:C:53:VAL:HG11	1:C:123:ARG:CD	1.80	1.10
1:A:171:ARG:HD3	1:A:172:GLN:N	1.66	1.10
1:C:227:VAL:O	3:C:782:HOH:O	1.68	1.10
1:B:97:VAL:HG12	1:B:101:LEU:HD12	1.31	1.09
1:C:214:LEU:CD2	1:C:216:GLN:NE2	2.14	1.09
1:C:208:LYS:HG3	1:C:209:PRO:HD3	1.12	1.09
1:C:214:LEU:HD23	1:C:216:GLN:HE21	0.94	1.09
1:B:3:PRO:HG2	1:B:4:PRO:HD2	1.35	1.09
1:C:216:GLN:OE1	1:C:220:PRO:HG3	1.51	1.08
1:C:36:SER:HB2	1:C:40:LYS:CE	1.83	1.07
1:C:107:LYS:HG2	1:C:177:ARG:HD2	1.34	1.07
1:C:74:ASN:O	1:C:78:GLU:HG3	1.53	1.07
1:B:60:LEU:HD21	1:B:115:TYR:CE2	1.89	1.07
1:C:211:LEU:CD1	1:C:221:VAL:HG13	1.85	1.06
1:C:170:LEU:O	1:C:174:LEU:CD1	2.03	1.06

Continued on next page...

Continued from previous page...

Atom-1	Atom-2	Distance(Å)	Clash(Å)
1:B:188:ARG:HG3	1:B:195:LYS:HE3	1.33	1.05
1:B:114:LEU:CD1	1:B:118:LYS:HE3	1.86	1.05
1:B:88:LYS:HE3	1:B:88:LYS:H	1.08	1.05
1:B:8:TRP:CZ3	1:B:11:VAL:CG2	2.32	1.04
1:B:92:GLU:CD	1:B:189:LEU:HB3	1.75	1.04
1:A:236:TYR:HA	1:A:239:LYS:HE2	1.35	1.04
1:B:195:LYS:HD3	2:B:604:AC9:C2	1.88	1.03
1:B:218:LEU:HD22	2:B:603:AC9:C7	1.86	1.03
1:C:53:VAL:CG1	1:C:123:ARG:NE	2.19	1.03
1:C:163:LEU:CD1	1:C:163:LEU:O	2.07	1.03
1:B:219:LEU:CD2	2:B:603:AC9:H92	1.89	1.03
1:C:110:GLU:O	1:C:114:LEU:CD1	2.05	1.03
1:B:92:GLU:HG2	1:B:189:LEU:HD23	1.21	1.03
1:B:102:ASP:O	1:B:106:LYS:HB2	1.58	1.02
1:C:17:VAL:O	1:C:21:VAL:HG23	1.60	1.02
1:B:40:LYS:HE2	1:B:44:LEU:HD13	1.35	1.02
1:B:122:LEU:HD12	1:B:162:HIS:HB3	1.03	1.02
1:B:219:LEU:HD22	2:B:603:AC9:C9	1.90	1.02
1:B:92:GLU:O	1:B:96:LYS:HB2	1.59	1.02
1:C:199:HIS:CE1	1:C:203:LEU:HD11	1.96	1.01
1:B:90:LEU:O	1:B:90:LEU:HD23	1.61	1.01
1:B:92:GLU:HG2	1:B:189:LEU:CB	1.90	1.00
1:C:211:LEU:HD13	1:C:221:VAL:HG13	1.38	1.00
1:B:8:TRP:HE3	1:B:11:VAL:CG2	1.68	1.00
1:B:173:ARG:HH21	1:B:173:ARG:CB	1.74	1.00
1:B:176:ALA:HB2	2:B:605:AC9:C15	1.92	0.99
1:B:14:LEU:HD11	1:B:71:PHE:CE1	1.98	0.99
1:B:46:LEU:HD12	1:B:50:TRP:HB2	1.38	0.99
1:B:226:LYS:HA	1:B:226:LYS:HE2	1.42	0.98
1:B:219:LEU:CD2	1:C:226:LYS:HE3	1.93	0.98
1:C:82:LEU:HG	1:C:86:MET:CE	1.92	0.98
1:C:53:VAL:HG11	1:C:123:ARG:HE	1.22	0.98
1:B:40:LYS:HE2	1:B:44:LEU:CD1	1.93	0.98
1:C:214:LEU:HD21	1:C:216:GLN:NE2	1.75	0.98
1:C:70:GLU:HG2	3:C:737:HOH:O	1.64	0.97
1:C:60:LEU:HD12	1:C:115:TYR:OH	1.65	0.97
1:B:226:LYS:O	1:B:230:LEU:CD1	2.13	0.97
1:B:115:TYR:HE1	1:B:170:LEU:HD22	1.28	0.97
1:C:8:TRP:O	1:C:12:LYS:CG	2.12	0.97
1:B:219:LEU:HD22	2:B:603:AC9:H92	0.97	0.97
1:C:215:ARG:HG2	3:C:685:HOH:O	1.65	0.97
1:C:14:LEU:HD12	1:C:178:LEU:HD11	1.45	0.96

Continued on next page...

Continued from previous page...

Atom-1	Atom-2	Distance(Å)	Clash(Å)
1:B:122:LEU:CD1	1:B:162:HIS:CB	2.40	0.96
1:B:42:LEU:HD22	3:B:662:HOH:O	1.64	0.96
1:C:53:VAL:HG13	1:C:123:ARG:CD	1.89	0.96
2:B:603:AC9:C5	1:C:222:LEU:HD11	1.94	0.96
1:C:208:LYS:CG	1:C:209:PRO:HD3	1.96	0.95
1:A:239:LYS:HG3	3:A:613:HOH:O	1.66	0.95
1:C:36:SER:HB2	1:C:40:LYS:HE3	1.41	0.95
1:C:11:VAL:HG21	3:C:732:HOH:O	1.63	0.95
1:B:236:TYR:CZ	2:B:604:AC9:H92	2.01	0.95
1:A:70:GLU:HG3	3:A:666:HOH:O	1.64	0.95
1:C:208:LYS:HG3	1:C:209:PRO:CD	1.96	0.95
1:C:214:LEU:HD23	1:C:216:GLN:NE2	1.78	0.95
1:B:92:GLU:HG3	1:B:189:LEU:HD23	0.97	0.95
1:C:56:THR:O	1:C:60:LEU:CD2	2.15	0.94
1:C:86:MET:HE2	3:C:825:HOH:O	1.65	0.94
1:B:92:GLU:CG	1:B:189:LEU:HB3	1.96	0.94
1:C:148:MET:HE2	3:C:835:HOH:O	1.65	0.94
1:B:173:ARG:HH21	1:B:173:ARG:HB3	1.20	0.94
1:B:174:LEU:HD12	1:B:175:ALA:H	1.17	0.94
1:B:86:MET:O	1:B:88:LYS:CE	2.15	0.94
1:C:214:LEU:HD21	1:C:216:GLN:HE21	1.29	0.94
1:B:42:LEU:H	1:B:42:LEU:HD23	1.33	0.94
1:B:86:MET:O	1:B:88:LYS:HE2	1.68	0.94
1:C:184:ASN:OD1	2:C:606:AC9:H53	1.67	0.94
1:B:90:LEU:O	1:B:93:VAL:HG23	1.68	0.93
1:C:132:GLN:O	1:C:136:GLU:HG2	1.69	0.93
1:B:26:GLY:HA2	1:B:29:TYR:HB2	1.50	0.93
1:B:176:ALA:HB2	2:B:605:AC9:H151	1.48	0.93
1:C:82:LEU:CG	1:C:86:MET:HE1	1.99	0.93
1:A:238:LYS:HD3	3:A:610:HOH:O	1.69	0.93
1:B:219:LEU:HG	1:C:226:LYS:CE	1.97	0.93
1:C:230:LEU:HD13	1:C:230:LEU:O	1.69	0.93
1:B:211:LEU:CD1	1:B:221:VAL:CG1	2.35	0.93
1:C:150:ASP:HA	3:C:812:HOH:O	1.67	0.93
1:B:115:TYR:CE1	1:B:170:LEU:HD22	2.03	0.93
1:C:8:TRP:HB2	1:C:12:LYS:HE3	0.93	0.92
1:B:83:ARG:NH1	1:B:84:GLN:NE2	2.17	0.92
1:B:97:VAL:CG1	1:B:101:LEU:HD11	1.98	0.92
1:B:72:TRP:HH2	1:B:105:GLN:HG3	1.34	0.92
1:B:10:ARG:HB2	1:B:71:PHE:CE1	2.03	0.92
1:B:92:GLU:HG3	1:B:189:LEU:CD2	1.85	0.92
1:C:13:ASP:O	1:C:17:VAL:CG2	2.16	0.92

Continued on next page...

Continued from previous page...

Atom-1	Atom-2	Distance(Å)	Clash(Å)
1:B:122:LEU:HD12	1:B:162:HIS:HB2	1.52	0.92
1:C:227:VAL:N	3:C:701:HOH:O	2.03	0.92
1:B:236:TYR:OH	2:B:604:AC9:H92	1.69	0.92
1:B:133:LYS:HZ3	1:B:133:LYS:HB2	1.35	0.92
1:B:189:LEU:N	1:B:189:LEU:HD12	1.84	0.92
1:C:234:GLU:O	1:C:238:LYS:HD2	1.68	0.92
1:C:45:LYS:HB3	3:C:654:HOH:O	1.67	0.92
1:C:26:GLY:O	1:C:30:VAL:CG2	2.17	0.91
1:A:218:LEU:HD22	2:B:603:AC9:H151	1.52	0.91
1:B:83:ARG:HD2	1:B:84:GLN:OE1	1.71	0.91
1:C:144:LEU:H	1:C:144:LEU:CD2	1.83	0.91
1:B:2:GLU:HB2	3:B:638:HOH:O	1.69	0.91
1:B:26:GLY:O	1:B:30:VAL:HG13	1.70	0.91
1:C:82:LEU:HD23	1:C:86:MET:CB	2.00	0.90
1:C:237:THR:HB	1:C:238:LYS:HZ1	1.32	0.90
2:B:603:AC9:H52	1:C:222:LEU:HD11	1.53	0.90
1:C:62:GLU:HB2	3:C:657:HOH:O	1.69	0.90
1:B:218:LEU:CD2	2:B:603:AC9:H7	2.02	0.90
1:B:199:HIS:CD2	2:B:604:AC9:H52	2.06	0.90
1:A:223:GLU:HA	3:A:626:HOH:O	1.70	0.90
1:C:53:VAL:HG11	1:C:123:ARG:HD2	1.43	0.90
1:B:3:PRO:HB2	1:B:4:PRO:HD3	0.90	0.90
1:B:88:LYS:H	1:B:88:LYS:CE	1.84	0.90
1:B:184:ASN:O	1:B:188:ARG:HB2	1.73	0.89
1:B:200:LEU:CD2	1:B:233:LEU:HD21	2.03	0.89
1:B:26:GLY:N	1:B:29:TYR:HD1	1.69	0.89
1:B:195:LYS:CD	2:B:604:AC9:H2	2.02	0.89
1:C:139:GLU:CD	1:C:140:LYS:H	1.75	0.89
1:B:92:GLU:HG2	1:B:189:LEU:CG	2.03	0.89
1:C:211:LEU:HD12	1:C:225:PHE:CE1	2.07	0.89
1:C:82:LEU:CG	1:C:86:MET:CE	2.51	0.89
1:C:8:TRP:O	1:C:12:LYS:HG3	1.73	0.89
1:B:83:ARG:CZ	1:B:84:GLN:NE2	2.35	0.89
1:B:60:LEU:HD21	1:B:115:TYR:HE2	1.38	0.88
1:C:188:ARG:CZ	2:C:606:AC9:H42	2.03	0.88
2:B:603:AC9:C4	1:C:219:LEU:HD23	2.03	0.88
1:C:53:VAL:HG13	1:C:123:ARG:HD2	1.47	0.88
1:B:40:LYS:CE	1:B:44:LEU:HD13	2.03	0.88
1:C:36:SER:HB2	1:C:40:LYS:HE2	1.54	0.88
1:C:82:LEU:HD21	1:C:86:MET:HG2	1.55	0.88
1:C:12:LYS:HE2	3:C:807:HOH:O	1.74	0.87
1:C:150:ASP:O	1:C:154:ALA:CB	2.23	0.87

Continued on next page...

Continued from previous page...

Atom-1	Atom-2	Distance(Å)	Clash(Å)
1:B:138:GLN:HB3	3:B:687:HOH:O	1.74	0.87
1:C:182:LYS:HB3	1:C:182:LYS:NZ	1.90	0.87
1:B:26:GLY:H	1:B:29:TYR:HD1	0.91	0.87
1:B:46:LEU:HD13	1:B:50:TRP:CD1	2.10	0.87
1:B:3:PRO:CG	1:B:4:PRO:HD2	2.04	0.87
1:B:173:ARG:NH2	1:B:173:ARG:CB	2.31	0.87
1:B:36:SER:O	1:B:40:LYS:CD	2.18	0.87
1:B:236:TYR:CE1	2:B:604:AC9:H92	2.09	0.86
1:B:45:LYS:HD2	3:B:670:HOH:O	1.74	0.86
1:C:73:ASP:HB3	1:C:77:LYS:NZ	1.89	0.86
1:B:200:LEU:HD21	1:B:233:LEU:CD2	2.05	0.86
1:B:97:VAL:CG1	1:B:101:LEU:CD1	2.52	0.86
1:B:200:LEU:CD2	1:B:233:LEU:CD2	2.52	0.86
1:A:171:ARG:HD3	1:A:171:ARG:C	1.96	0.85
1:A:171:ARG:HH11	1:A:172:GLN:HB2	0.74	0.85
1:A:38:LEU:HB2	3:A:693:HOH:O	1.76	0.85
1:C:8:TRP:HB3	1:C:12:LYS:HE3	1.58	0.85
1:B:46:LEU:CD1	1:B:50:TRP:CB	2.53	0.85
1:C:15:ALA:O	1:C:19:VAL:CG2	2.24	0.85
1:C:237:THR:HB	1:C:238:LYS:CE	2.06	0.85
1:B:118:LYS:HD2	1:B:166:TYR:HB3	1.59	0.85
1:A:26:GLY:HA3	3:A:709:HOH:O	1.77	0.85
1:C:132:GLN:O	1:C:136:GLU:CG	2.25	0.85
2:C:607:AC9:H7	3:C:736:HOH:O	1.76	0.85
1:A:188:ARG:HH12	2:A:601:AC9:H152	1.42	0.85
1:B:116:ARG:O	1:B:119:VAL:HG12	1.77	0.85
1:B:92:GLU:OE1	1:B:189:LEU:HB3	1.77	0.84
1:B:6:SER:O	1:B:8:TRP:N	2.10	0.84
1:B:8:TRP:CE3	1:B:11:VAL:HG23	2.12	0.84
1:C:36:SER:O	1:C:40:LYS:CB	2.21	0.84
1:C:8:TRP:O	1:C:12:LYS:CD	2.26	0.83
1:B:218:LEU:CD2	2:B:603:AC9:C7	2.55	0.83
1:B:90:LEU:HD23	1:B:90:LEU:C	1.97	0.83
1:B:219:LEU:CD1	1:C:226:LYS:HE3	2.07	0.83
1:B:13:ASP:O	1:B:17:VAL:HG12	1.77	0.83
2:B:604:AC9:H143	3:B:718:HOH:O	1.78	0.83
1:B:226:LYS:HA	1:B:226:LYS:CE	2.08	0.83
1:B:240:LEU:HD21	3:B:758:HOH:O	1.78	0.83
1:B:10:ARG:HB2	1:B:71:PHE:HE1	1.42	0.83
1:C:148:MET:HB2	3:C:726:HOH:O	1.76	0.83
1:C:238:LYS:N	1:C:238:LYS:HE3	1.94	0.82
1:A:171:ARG:CD	1:A:172:GLN:N	2.40	0.82

Continued on next page...

Continued from previous page...

Atom-1	Atom-2	Distance(Å)	Clash(Å)
1:C:19:VAL:HG11	3:C:746:HOH:O	1.79	0.82
1:B:92:GLU:CB	1:B:189:LEU:HD23	2.09	0.82
1:B:88:LYS:N	1:B:88:LYS:HE3	1.92	0.82
1:C:176:ALA:HB2	2:C:607:AC9:C15	2.10	0.82
1:A:240:LEU:HG	3:A:613:HOH:O	1.78	0.82
1:B:176:ALA:CB	2:B:605:AC9:H151	2.09	0.82
1:B:133:LYS:O	1:B:137:LEU:HB3	1.79	0.82
1:B:57:PHE:HZ	1:B:123:ARG:NH1	1.78	0.82
1:C:8:TRP:O	1:C:12:LYS:HD2	1.79	0.81
1:C:145:GLY:HA3	3:C:763:HOH:O	1.79	0.81
1:A:173:ARG:N	1:A:173:ARG:HD2	1.95	0.81
1:C:236:TYR:CE2	2:C:606:AC9:H92	2.15	0.81
1:A:202:THR:HG21	3:A:615:HOH:O	1.80	0.81
1:A:137:LEU:HB3	3:A:631:HOH:O	1.79	0.81
1:B:92:GLU:HG2	1:B:189:LEU:HB3	1.57	0.81
1:B:219:LEU:HB3	3:B:751:HOH:O	1.81	0.81
1:B:116:ARG:C	1:B:119:VAL:HG12	2.00	0.81
1:B:188:ARG:HG3	1:B:195:LYS:CE	2.10	0.81
1:B:82:LEU:HD23	1:B:86:MET:CB	2.11	0.81
1:A:171:ARG:NH1	1:A:172:GLN:CB	2.33	0.80
1:B:133:LYS:HB2	1:B:133:LYS:NZ	1.95	0.80
1:B:224:SER:HB3	3:B:649:HOH:O	1.80	0.80
1:C:73:ASP:O	1:C:77:LYS:HE2	1.82	0.80
1:B:151:ARG:O	1:B:155:HIS:HD2	1.65	0.80
1:B:54:THR:O	1:B:58:SER:HB3	1.79	0.80
1:B:72:TRP:CH2	1:B:105:GLN:HG3	2.15	0.80
1:B:139:GLU:OE2	1:B:141:LEU:CD2	2.27	0.80
1:C:176:ALA:HA	3:C:826:HOH:O	1.81	0.80
1:B:6:SER:N	1:B:7:PRO:HD2	1.97	0.80
1:B:133:LYS:O	1:B:137:LEU:CB	2.30	0.80
1:C:163:LEU:C	1:C:163:LEU:HD13	2.02	0.80
1:C:144:LEU:O	1:C:148:MET:HE3	1.82	0.80
1:C:132:GLN:O	1:C:136:GLU:CD	2.20	0.80
1:C:211:LEU:HD13	1:C:221:VAL:CG1	2.12	0.79
1:A:156:VAL:HA	3:A:675:HOH:O	1.82	0.79
1:B:98:GLN:HB3	1:B:99:PRO:HD3	1.65	0.79
1:C:89:ASP:HB3	1:C:92:GLU:HB2	1.64	0.79
1:B:44:LEU:HD23	1:B:47:LEU:HD12	0.85	0.79
1:B:219:LEU:CG	1:C:226:LYS:CE	2.50	0.79
1:C:83:ARG:HA	1:C:88:LYS:HG2	1.65	0.79
1:B:41:GLN:HB3	3:B:682:HOH:O	1.82	0.79
1:B:222:LEU:HD12	2:B:603:AC9:H7	1.63	0.79

Continued on next page...

Continued from previous page...

Atom-1	Atom-2	Distance(Å)	Clash(Å)
1:B:218:LEU:HD21	2:B:603:AC9:H101	1.65	0.78
1:B:229:PHE:HB2	3:B:793:HOH:O	1.82	0.78
1:B:3:PRO:CG	1:B:4:PRO:CD	2.59	0.78
1:C:164:ALA:HB3	1:C:165:PRO:HD3	1.65	0.78
1:C:82:LEU:CD2	1:C:86:MET:HB3	2.12	0.78
1:C:82:LEU:HD11	1:C:86:MET:HE2	1.65	0.78
1:B:14:LEU:HD11	1:B:71:PHE:CZ	2.18	0.78
1:A:215:ARG:HD3	3:A:714:HOH:O	1.83	0.78
1:C:8:TRP:CB	1:C:12:LYS:CE	2.47	0.78
1:B:3:PRO:HG2	1:B:4:PRO:CD	2.13	0.77
1:C:211:LEU:HD12	1:C:225:PHE:CD1	2.18	0.77
1:C:211:LEU:HD13	1:C:221:VAL:HA	1.66	0.77
1:B:144:LEU:H	1:B:144:LEU:HD23	1.48	0.77
1:C:84:GLN:HB2	3:C:676:HOH:O	1.85	0.77
1:B:82:LEU:HD23	1:B:86:MET:HB2	1.67	0.77
1:C:44:LEU:HD11	3:C:706:HOH:O	1.84	0.77
1:B:143:PRO:HB3	3:B:720:HOH:O	1.83	0.77
1:C:144:LEU:O	1:C:148:MET:CE	2.33	0.77
1:B:6:SER:N	1:B:7:PRO:CD	2.47	0.77
1:B:114:LEU:O	1:B:114:LEU:HD13	1.84	0.77
1:C:199:HIS:HE1	1:C:203:LEU:HD11	1.46	0.77
1:C:4:PRO:O	1:C:86:MET:HE3	1.85	0.77
1:C:163:LEU:C	1:C:163:LEU:CD1	2.54	0.77
1:B:174:LEU:CD1	1:B:175:ALA:N	2.45	0.77
1:B:39:GLY:HA2	3:B:742:HOH:O	1.84	0.77
1:B:238:LYS:HG3	1:B:239:LYS:N	1.98	0.77
1:C:2:GLU:HG2	3:C:731:HOH:O	1.84	0.76
1:C:82:LEU:CD1	1:C:86:MET:CE	2.64	0.76
1:B:86:MET:O	1:B:88:LYS:N	2.18	0.76
1:C:234:GLU:O	1:C:238:LYS:CD	2.33	0.76
1:B:92:GLU:CG	1:B:189:LEU:CB	2.58	0.76
1:C:216:GLN:OE1	1:C:220:PRO:CG	2.33	0.76
1:B:103:ASP:HB3	1:B:181:LEU:HD11	1.68	0.75
1:C:82:LEU:CD2	1:C:86:MET:HG2	2.16	0.75
1:C:170:LEU:C	1:C:174:LEU:HD13	2.05	0.75
1:C:62:GLU:HG2	3:C:802:HOH:O	1.85	0.75
1:C:209:PRO:HA	3:C:656:HOH:O	1.86	0.75
1:A:226:LYS:CD	1:C:219:LEU:HD13	2.11	0.75
1:B:125:GLU:HB3	3:B:628:HOH:O	1.86	0.75
1:C:213:ASP:HA	3:C:709:HOH:O	1.87	0.75
1:C:78:GLU:HB3	3:C:625:HOH:O	1.85	0.75
1:A:94:LYS:HE2	3:A:629:HOH:O	1.87	0.75

Continued on next page...

Continued from previous page...

Atom-1	Atom-2	Distance(Å)	Clash(Å)
1:B:8:TRP:HE3	1:B:11:VAL:HG23	1.46	0.74
1:B:179:GLU:HB3	3:B:740:HOH:O	1.86	0.74
1:C:211:LEU:HB3	1:C:221:VAL:HG13	1.67	0.74
1:B:211:LEU:HD12	1:B:221:VAL:HG13	0.79	0.74
1:B:92:GLU:O	1:B:96:LYS:CB	2.34	0.74
1:B:148:MET:CE	1:B:149:ARG:HD2	2.17	0.74
1:C:82:LEU:HD11	1:C:86:MET:CE	2.16	0.74
1:B:57:PHE:O	1:B:61:ARG:HB2	1.86	0.74
1:C:139:GLU:CD	1:C:140:LYS:N	2.41	0.73
1:C:144:LEU:HD23	1:C:144:LEU:N	1.96	0.73
1:B:92:GLU:CG	1:B:189:LEU:CG	2.64	0.73
1:B:46:LEU:CD1	1:B:50:TRP:HB2	2.18	0.73
1:B:60:LEU:CD2	1:B:115:TYR:CE2	2.70	0.73
1:C:36:SER:CB	1:C:40:LYS:HE3	2.16	0.73
1:B:185:GLY:O	1:B:189:LEU:HD13	1.88	0.73
1:B:98:GLN:HB3	1:B:99:PRO:CD	2.19	0.73
1:A:226:LYS:CD	1:C:219:LEU:CD1	2.64	0.73
1:C:222:LEU:O	1:C:226:LYS:HG3	1.88	0.73
1:B:10:ARG:CB	1:B:71:PHE:HE1	2.01	0.73
1:C:236:TYR:CE2	2:C:606:AC9:C9	2.72	0.73
1:A:230:LEU:HD23	1:A:231:SER:N	2.03	0.73
1:B:113:GLU:HB2	3:B:750:HOH:O	1.89	0.72
1:B:222:LEU:HD12	2:B:603:AC9:C7	2.18	0.72
1:B:189:LEU:N	1:B:189:LEU:CD1	2.53	0.72
1:B:173:ARG:HB3	1:B:173:ARG:CZ	2.17	0.72
1:C:176:ALA:CA	2:C:607:AC9:H151	2.19	0.72
1:C:214:LEU:O	1:C:216:GLN:N	2.23	0.72
1:B:221:VAL:HG21	3:B:778:HOH:O	1.90	0.72
1:B:78:GLU:O	1:B:82:LEU:HD12	1.88	0.72
1:C:73:ASP:HB3	1:C:77:LYS:HZ3	1.54	0.72
1:C:231:SER:HB3	3:C:782:HOH:O	1.90	0.72
1:A:239:LYS:HE3	3:A:690:HOH:O	1.89	0.72
1:B:147:GLU:O	1:B:151:ARG:CD	2.38	0.72
1:B:38:LEU:CD2	1:B:156:VAL:HG21	2.19	0.72
1:C:227:VAL:CA	3:C:701:HOH:O	2.38	0.71
1:B:200:LEU:HD23	1:B:233:LEU:HD21	1.70	0.71
1:C:29:TYR:HB3	1:C:33:PHE:CE1	2.25	0.71
1:C:198:GLU:HA	3:C:817:HOH:O	1.89	0.71
1:B:219:LEU:HD21	1:C:226:LYS:HE3	1.70	0.71
1:B:107:LYS:HZ3	1:B:174:LEU:N	1.88	0.71
1:A:218:LEU:HB3	2:B:603:AC9:H12	1.71	0.71
1:B:15:ALA:O	1:B:19:VAL:HG23	1.91	0.71

Continued on next page...

Continued from previous page...

Atom-1	Atom-2	Distance(Å)	Clash(Å)
1:B:86:MET:O	1:B:88:LYS:CD	2.39	0.71
1:B:214:LEU:HD11	3:B:757:HOH:O	1.91	0.71
1:B:60:LEU:CD2	1:B:115:TYR:HE2	2.01	0.71
1:C:230:LEU:CD1	1:C:230:LEU:O	2.38	0.70
1:B:218:LEU:HD22	2:B:603:AC9:H7	1.63	0.70
1:A:188:ARG:HD2	2:A:601:AC9:H41	1.72	0.70
1:A:220:PRO:HB2	3:A:673:HOH:O	1.92	0.70
1:C:134:LEU:HD21	3:C:663:HOH:O	1.91	0.70
1:B:176:ALA:HB2	2:B:605:AC9:H153	1.73	0.70
1:B:121:PRO:HG3	3:B:783:HOH:O	1.91	0.70
1:B:240:LEU:HD11	3:B:758:HOH:O	1.92	0.70
1:B:189:LEU:HG	3:B:632:HOH:O	1.91	0.69
1:B:218:LEU:HA	3:B:684:HOH:O	1.91	0.69
1:B:118:LYS:HB3	3:B:672:HOH:O	1.92	0.69
1:A:82:LEU:HA	1:A:86:MET:HG2	1.75	0.69
1:A:171:ARG:HD3	1:A:172:GLN:CA	2.23	0.68
1:B:200:LEU:HD21	1:B:233:LEU:HD22	1.74	0.68
1:C:73:ASP:HB3	1:C:77:LYS:HZ1	1.59	0.68
1:B:142:SER:OG	1:B:143:PRO:HD2	1.93	0.68
2:B:603:AC9:H43	1:C:219:LEU:HD23	1.74	0.68
1:B:219:LEU:HD11	1:C:226:LYS:CE	2.22	0.68
1:B:57:PHE:CZ	1:B:123:ARG:NH1	2.60	0.68
1:A:46:LEU:HD21	3:A:694:HOH:O	1.92	0.68
1:C:13:ASP:HB3	3:C:717:HOH:O	1.94	0.68
1:C:211:LEU:CD1	1:C:221:VAL:HA	2.22	0.68
1:C:211:LEU:CD1	1:C:225:PHE:CE1	2.76	0.68
1:B:195:LYS:HE2	2:B:604:AC9:H41	1.76	0.68
1:C:45:LYS:HE3	3:C:654:HOH:O	1.94	0.68
1:C:39:GLY:HA3	3:C:770:HOH:O	1.91	0.68
1:B:50:TRP:O	1:B:54:THR:HG22	1.93	0.67
1:B:132:GLN:O	1:B:136:GLU:HG2	1.94	0.67
1:B:219:LEU:CD1	1:C:226:LYS:CE	2.72	0.67
1:C:211:LEU:CD1	1:C:221:VAL:CG1	2.69	0.67
2:A:601:AC9:H43	3:A:639:HOH:O	1.93	0.67
1:C:182:LYS:HB3	1:C:182:LYS:HZ3	1.59	0.67
1:C:82:LEU:CD1	1:C:86:MET:HE1	2.24	0.67
1:B:11:VAL:HA	1:B:178:LEU:HD21	1.77	0.67
1:A:22:LEU:HD11	1:A:170:LEU:HD23	1.77	0.67
1:B:14:LEU:HD11	1:B:71:PHE:CD1	2.30	0.67
1:B:211:LEU:HD12	1:B:221:VAL:HG11	1.66	0.67
1:C:131:ARG:HA	3:C:631:HOH:O	1.94	0.67
1:B:42:LEU:H	1:B:42:LEU:CD2	2.06	0.67

Continued on next page...

Continued from previous page...

Atom-1	Atom-2	Distance(Å)	Clash(Å)
1:C:232:ALA:O	1:C:236:TYR:CZ	2.48	0.67
1:B:10:ARG:CB	1:B:71:PHE:CE1	2.76	0.66
1:C:237:THR:C	1:C:238:LYS:HE3	2.15	0.66
1:B:219:LEU:HD23	1:B:219:LEU:N	2.10	0.66
1:B:93:VAL:HG13	3:B:618:HOH:O	1.93	0.66
2:C:607:AC9:H91	3:C:736:HOH:O	1.95	0.66
1:C:51:ASP:HB3	3:C:805:HOH:O	1.94	0.66
1:C:166:TYR:O	1:C:170:LEU:HD22	1.94	0.66
1:C:21:VAL:CG1	1:C:63:GLN:HE21	2.08	0.66
1:C:176:ALA:HA	2:C:607:AC9:H151	1.77	0.66
1:C:93:VAL:HB	3:C:679:HOH:O	1.96	0.66
1:B:147:GLU:O	1:B:151:ARG:HD2	1.96	0.66
1:B:86:MET:O	1:B:88:LYS:HD3	1.96	0.66
1:B:116:ARG:O	1:B:119:VAL:CG1	2.43	0.66
2:B:603:AC9:C5	1:C:222:LEU:CD1	2.73	0.65
1:C:9:ASP:O	1:C:13:ASP:OD2	2.13	0.65
1:C:17:VAL:HG11	3:C:813:HOH:O	1.95	0.65
2:C:607:AC9:H153	3:C:801:HOH:O	1.96	0.65
1:B:90:LEU:CD2	1:B:90:LEU:C	2.65	0.65
1:A:111:GLU:HG2	3:A:647:HOH:O	1.96	0.65
1:C:133:LYS:HA	1:C:137:LEU:HD12	1.78	0.65
1:B:47:LEU:HD21	3:B:773:HOH:O	1.96	0.65
1:B:139:GLU:HG2	1:B:140:LYS:H	1.61	0.65
1:B:97:VAL:HG13	1:B:101:LEU:HD11	1.78	0.65
1:B:42:LEU:HD11	3:B:680:HOH:O	1.97	0.64
1:C:108:TRP:HA	1:C:111:GLU:OE1	1.97	0.64
1:B:159:LEU:HD13	1:B:159:LEU:O	1.97	0.64
1:B:144:LEU:HD12	1:B:148:MET:HB3	1.79	0.64
1:B:222:LEU:CD1	2:B:603:AC9:H7	2.27	0.64
1:B:51:ASP:HA	1:B:54:THR:HG22	1.80	0.64
1:C:82:LEU:CG	1:C:86:MET:HE2	2.27	0.64
1:B:236:TYR:OH	2:B:604:AC9:C9	2.45	0.64
1:A:171:ARG:CD	1:A:171:ARG:C	2.56	0.64
1:B:21:VAL:CG2	1:B:63:GLN:CD	2.65	0.64
1:B:148:MET:HE1	1:B:149:ARG:HD2	1.79	0.64
1:B:92:GLU:HG2	1:B:189:LEU:HD22	1.73	0.64
1:B:10:ARG:HB2	1:B:71:PHE:CZ	2.32	0.64
1:B:195:LYS:CE	2:B:604:AC9:H41	2.27	0.64
1:C:21:VAL:HG13	1:C:63:GLN:HE21	1.62	0.64
2:B:603:AC9:H51	1:C:222:LEU:HD11	1.79	0.64
1:B:71:PHE:CE2	1:B:75:LEU:HD21	2.33	0.64
1:C:214:LEU:C	1:C:216:GLN:H	1.98	0.64

Continued on next page...

Continued from previous page...

Atom-1	Atom-2	Distance(Å)	Clash(Å)
1:B:219:LEU:H	1:B:219:LEU:HD23	1.63	0.64
1:B:82:LEU:O	1:B:88:LYS:HD3	1.98	0.64
1:B:44:LEU:HA	3:B:715:HOH:O	1.97	0.64
1:B:86:MET:SD	1:B:86:MET:N	2.71	0.64
1:B:96:LYS:HE3	3:B:616:HOH:O	1.98	0.64
1:B:159:LEU:HD21	3:B:760:HOH:O	1.98	0.64
1:C:27:ARG:HD3	3:C:834:HOH:O	1.97	0.64
1:B:111:GLU:OE2	1:B:170:LEU:HD11	1.98	0.63
1:B:14:LEU:CD1	1:B:71:PHE:CE1	2.80	0.63
1:C:82:LEU:HA	1:C:86:MET:HB3	1.80	0.63
1:A:31:SER:HB3	3:A:695:HOH:O	1.98	0.63
1:B:44:LEU:HB3	1:B:47:LEU:HB2	1.78	0.63
1:C:53:VAL:CG1	1:C:123:ARG:HE	1.98	0.63
1:A:176:ALA:HA	2:A:602:AC9:H151	1.79	0.63
1:B:3:PRO:HG3	3:B:623:HOH:O	1.98	0.63
1:A:176:ALA:HB2	2:A:602:AC9:C15	2.28	0.63
1:C:109:GLN:O	1:C:113:GLU:HG3	1.98	0.63
1:B:188:ARG:HB3	1:B:189:LEU:HD12	1.81	0.63
1:B:219:LEU:HD21	1:C:226:LYS:CE	2.28	0.63
1:B:82:LEU:HD23	1:B:86:MET:HB3	1.81	0.63
1:C:145:GLY:HA2	1:C:148:MET:CE	2.28	0.62
1:B:38:LEU:HD23	1:B:156:VAL:HG21	1.80	0.62
1:B:139:GLU:CD	1:B:141:LEU:HD22	2.18	0.62
1:C:87:SER:HB3	3:C:754:HOH:O	1.97	0.62
1:C:130:ALA:HB2	3:C:738:HOH:O	1.99	0.62
1:B:42:LEU:O	1:B:44:LEU:HD12	1.99	0.62
1:C:112:MET:HE2	1:C:116:ARG:HH11	1.64	0.62
1:B:218:LEU:HD21	2:B:603:AC9:C10	2.29	0.62
1:A:188:ARG:NH1	2:A:601:AC9:H152	2.13	0.62
1:C:122:LEU:O	1:C:126:LEU:HG	1.98	0.62
1:C:82:LEU:CD2	1:C:86:MET:CG	2.78	0.62
1:B:24:ASP:O	1:B:27:ARG:N	2.25	0.62
1:C:168:ASP:O	1:C:171:ARG:HB3	2.00	0.62
1:B:222:LEU:HD11	2:B:603:AC9:H101	1.82	0.61
1:C:53:VAL:HG13	1:C:123:ARG:HD3	1.76	0.61
1:B:139:GLU:CG	1:B:140:LYS:H	2.11	0.61
1:A:236:TYR:CA	1:A:239:LYS:HE2	2.22	0.61
1:C:211:LEU:HD12	1:C:221:VAL:HG13	1.79	0.61
1:C:222:LEU:HG	3:C:729:HOH:O	2.00	0.61
1:B:111:GLU:OE2	1:B:170:LEU:CD1	2.49	0.61
1:B:147:GLU:O	1:B:151:ARG:HD3	1.98	0.61
1:B:151:ARG:O	1:B:155:HIS:CD2	2.52	0.61

Continued on next page...

Continued from previous page...

Atom-1	Atom-2	Distance(Å)	Clash(Å)
1:B:229:PHE:CE2	3:B:719:HOH:O	2.53	0.61
1:C:216:GLN:CD	1:C:220:PRO:HG3	2.21	0.61
1:A:200:LEU:HD21	1:A:233:LEU:HD21	1.81	0.61
1:C:4:PRO:CB	1:C:86:MET:SD	2.89	0.61
1:B:199:HIS:NE2	2:B:604:AC9:H52	2.15	0.61
1:B:114:LEU:HD11	1:B:118:LYS:CE	2.13	0.61
1:C:82:LEU:CD1	1:C:86:MET:HE2	2.27	0.61
1:C:238:LYS:N	1:C:238:LYS:CE	2.64	0.61
1:C:188:ARG:CZ	2:C:606:AC9:C4	2.76	0.61
1:A:236:TYR:C	1:A:236:TYR:CD2	2.74	0.61
1:C:176:ALA:HB2	2:C:607:AC9:H151	1.82	0.61
2:B:603:AC9:H42	1:C:219:LEU:HD23	1.83	0.60
1:B:116:ARG:HA	1:B:119:VAL:CG1	2.31	0.60
1:C:122:LEU:HD13	1:C:162:HIS:CG	2.35	0.60
1:B:71:PHE:CE2	1:B:75:LEU:CD2	2.84	0.60
1:C:216:GLN:CD	1:C:220:PRO:CG	2.69	0.60
1:C:177:ARG:O	1:C:181:LEU:HB2	2.00	0.60
1:C:45:LYS:HG3	1:C:45:LYS:O	2.01	0.60
1:B:42:LEU:N	1:B:42:LEU:HD23	2.10	0.60
1:A:218:LEU:O	1:A:222:LEU:HG	2.02	0.60
1:C:82:LEU:HD21	1:C:86:MET:HE2	1.82	0.60
1:B:130:ALA:HA	1:B:133:LYS:HZ1	1.66	0.60
1:A:192:TYR:HA	3:A:652:HOH:O	2.02	0.60
1:B:226:LYS:CA	1:B:226:LYS:HE2	2.21	0.60
1:B:133:LYS:O	1:B:137:LEU:HB2	2.00	0.60
1:B:148:MET:SD	1:B:149:ARG:HD2	2.41	0.60
1:B:238:LYS:HG3	1:B:239:LYS:H	1.63	0.60
1:B:30:VAL:O	1:B:34:GLU:HB2	2.02	0.59
1:B:44:LEU:HG	3:B:715:HOH:O	2.01	0.59
1:C:148:MET:SD	1:C:149:ARG:N	2.73	0.59
1:B:235:GLU:HA	1:B:238:LYS:HG2	1.84	0.59
1:B:66:PRO:O	1:B:70:GLU:HG2	2.02	0.59
1:A:225:PHE:HE1	3:A:703:HOH:O	1.84	0.59
1:B:116:ARG:CA	1:B:119:VAL:HG12	2.33	0.59
1:A:240:LEU:CD1	3:A:690:HOH:O	2.51	0.58
1:C:237:THR:CB	1:C:238:LYS:HZ1	1.96	0.58
1:C:237:THR:HB	1:C:238:LYS:HZ2	0.74	0.58
1:C:236:TYR:HE2	2:C:606:AC9:C9	2.15	0.58
1:C:176:ALA:HB2	2:C:607:AC9:H153	1.85	0.58
1:C:110:GLU:O	1:C:114:LEU:HD12	2.00	0.58
1:B:21:VAL:HG21	1:B:63:GLN:CD	2.24	0.58
1:B:212:GLU:HG3	3:B:688:HOH:O	2.03	0.58

Continued on next page...

Continued from previous page...

Atom-1	Atom-2	Distance(Å)	Clash(Å)
1:A:173:ARG:N	1:A:173:ARG:CD	2.65	0.58
1:C:65:GLY:HA3	3:C:761:HOH:O	2.03	0.58
1:C:193:HIS:O	1:C:195:LYS:HG3	2.04	0.58
1:B:102:ASP:O	1:B:106:LYS:CB	2.43	0.58
1:C:145:GLY:HA2	1:C:148:MET:HE3	1.86	0.58
1:C:112:MET:C	1:C:112:MET:SD	2.82	0.58
1:A:218:LEU:HD22	2:B:603:AC9:C15	2.31	0.57
1:B:51:ASP:HA	1:B:54:THR:CG2	2.33	0.57
1:B:135:HIS:HB2	1:B:136:GLU:OE1	2.04	0.57
1:A:169:GLU:O	1:A:173:ARG:HG2	2.04	0.57
1:B:60:LEU:HD21	1:B:115:TYR:CZ	2.39	0.57
1:C:176:ALA:CB	2:C:607:AC9:H151	2.33	0.57
1:C:112:MET:CE	1:C:116:ARG:HH11	2.17	0.57
1:C:49:ASN:N	1:C:49:ASN:HD22	2.02	0.57
1:C:216:GLN:HG3	1:C:216:GLN:O	2.04	0.57
1:B:107:LYS:NZ	1:B:174:LEU:HA	2.19	0.57
1:B:115:TYR:HE1	1:B:170:LEU:CD2	2.11	0.57
1:B:57:PHE:HZ	1:B:123:ARG:CZ	2.16	0.57
1:C:7:PRO:HG3	3:C:824:HOH:O	2.04	0.57
1:B:21:VAL:HG21	1:B:63:GLN:CG	2.35	0.57
1:C:93:VAL:CB	3:C:679:HOH:O	2.51	0.57
1:A:187:ALA:CB	1:A:198:GLU:OE1	2.53	0.57
1:B:6:SER:H	1:B:7:PRO:CD	2.16	0.57
1:C:164:ALA:HB3	1:C:165:PRO:CD	2.34	0.57
1:C:211:LEU:CG	1:C:225:PHE:HE1	2.18	0.57
1:B:212:GLU:HA	1:B:212:GLU:OE1	2.05	0.57
1:B:188:ARG:CB	1:B:189:LEU:HD12	2.35	0.57
1:C:8:TRP:O	1:C:12:LYS:CB	2.53	0.57
1:C:237:THR:CG2	1:C:238:LYS:HZ1	2.17	0.56
1:B:122:LEU:CD1	1:B:162:HIS:HB2	2.21	0.56
1:A:218:LEU:O	1:A:222:LEU:CG	2.53	0.56
1:A:218:LEU:O	1:A:222:LEU:HD11	2.05	0.56
1:B:40:LYS:HE2	1:B:44:LEU:HD12	1.85	0.56
1:B:83:ARG:CD	1:B:84:GLN:OE1	2.50	0.56
1:B:107:LYS:HZ1	1:B:174:LEU:HA	1.70	0.56
1:B:169:GLU:HG2	1:B:173:ARG:HE	1.70	0.56
1:C:134:LEU:CD1	1:C:151:ARG:HH21	2.19	0.56
1:B:229:PHE:CZ	3:B:719:HOH:O	2.52	0.56
1:C:82:LEU:HD11	3:C:825:HOH:O	2.05	0.56
1:B:65:GLY:N	1:B:66:PRO:HD2	2.21	0.56
1:C:108:TRP:O	1:C:111:GLU:HG2	2.06	0.56
1:C:182:LYS:HB3	1:C:182:LYS:HZ2	1.70	0.56

Continued on next page...

Continued from previous page...

Atom-1	Atom-2	Distance(Å)	Clash(Å)
1:C:156:VAL:O	1:C:160:ARG:HG2	2.05	0.56
1:C:82:LEU:CD2	1:C:86:MET:CB	2.77	0.56
1:B:46:LEU:HB2	3:B:674:HOH:O	2.06	0.56
1:C:211:LEU:HD12	1:C:225:PHE:HE1	1.65	0.56
1:C:65:GLY:CA	3:C:761:HOH:O	2.54	0.56
1:C:176:ALA:O	1:C:180:ALA:HB3	2.06	0.56
1:B:188:ARG:C	1:B:189:LEU:HD12	2.26	0.55
1:B:184:ASN:O	1:B:188:ARG:CB	2.51	0.55
1:A:222:LEU:CD2	2:B:603:AC9:H151	2.36	0.55
1:A:176:ALA:CA	2:A:602:AC9:H151	2.36	0.55
1:B:86:MET:C	1:B:88:LYS:HE2	2.26	0.55
1:B:26:GLY:CA	1:B:29:TYR:HB2	2.29	0.55
1:C:8:TRP:HB3	1:C:12:LYS:HG3	1.87	0.55
1:B:196:ALA:HB2	1:B:240:LEU:HD22	1.88	0.55
1:B:145:GLY:CA	3:B:745:HOH:O	2.54	0.55
1:C:94:LYS:HD3	3:C:644:HOH:O	2.05	0.55
1:C:132:GLN:O	1:C:136:GLU:OE1	2.24	0.55
1:B:26:GLY:N	1:B:29:TYR:CD1	2.57	0.55
1:A:219:LEU:HD13	2:B:603:AC9:H143	1.88	0.55
1:B:110:GLU:O	1:B:114:LEU:HB2	2.07	0.55
1:C:120:GLU:CG	3:C:760:HOH:O	2.54	0.55
1:B:219:LEU:HA	2:B:603:AC9:H91	1.89	0.55
1:B:38:LEU:HD21	1:B:156:VAL:HG21	1.86	0.55
1:B:93:VAL:O	1:B:97:VAL:HG23	2.07	0.54
1:B:82:LEU:HA	1:B:86:MET:HB2	1.89	0.54
1:B:116:ARG:HA	1:B:119:VAL:HG12	1.90	0.54
1:C:53:VAL:HG12	1:C:123:ARG:NE	2.19	0.54
1:C:227:VAL:HA	3:C:701:HOH:O	2.04	0.54
1:C:230:LEU:C	1:C:230:LEU:CD1	2.75	0.54
1:C:232:ALA:O	1:C:236:TYR:CE1	2.61	0.54
1:C:211:LEU:HD13	1:C:221:VAL:CA	2.37	0.54
2:B:603:AC9:H2	1:C:218:LEU:HB3	1.89	0.54
1:B:219:LEU:HD11	1:C:226:LYS:HE3	1.85	0.54
1:B:173:ARG:HH21	1:B:173:ARG:HB2	1.68	0.54
1:B:90:LEU:HD12	3:B:627:HOH:O	2.08	0.54
1:C:164:ALA:CB	3:C:690:HOH:O	2.56	0.54
1:C:134:LEU:HD12	1:C:151:ARG:HH21	1.72	0.53
1:C:68:THR:HG22	1:C:108:TRP:CZ3	2.43	0.53
1:B:92:GLU:OE1	1:B:189:LEU:O	2.26	0.53
1:A:172:GLN:HG2	1:A:173:ARG:CZ	2.38	0.53
1:C:139:GLU:OE1	1:C:140:LYS:N	2.24	0.53
1:C:125:GLU:O	1:C:129:GLY:HA3	2.08	0.53

Continued on next page...

Continued from previous page...

Atom-1	Atom-2	Distance(Å)	Clash(Å)
1:C:193:HIS:O	1:C:195:LYS:HE2	2.07	0.53
1:C:164:ALA:CB	3:C:752:HOH:O	2.56	0.53
1:A:207:ALA:HB2	3:A:649:HOH:O	2.08	0.53
1:B:199:HIS:HD2	2:B:604:AC9:H52	1.69	0.53
1:B:188:ARG:HB3	1:B:189:LEU:CD1	2.38	0.53
1:C:193:HIS:HB3	1:C:195:LYS:HE3	1.90	0.53
1:C:230:LEU:HD13	1:C:230:LEU:C	2.29	0.53
1:B:185:GLY:O	1:B:189:LEU:CD1	2.55	0.52
1:B:176:ALA:O	1:B:180:ALA:CB	2.58	0.52
1:C:29:TYR:HB3	1:C:33:PHE:CD1	2.44	0.52
1:C:17:VAL:CG1	3:C:813:HOH:O	2.54	0.52
1:B:46:LEU:HD11	1:B:50:TRP:CG	2.39	0.52
1:C:74:ASN:O	1:C:78:GLU:CG	2.42	0.52
1:C:185:GLY:O	1:C:189:LEU:HD23	2.09	0.52
1:C:112:MET:SD	1:C:113:GLU:N	2.82	0.52
1:B:114:LEU:CD1	1:B:114:LEU:C	2.78	0.52
1:B:109:GLN:HG3	3:B:710:HOH:O	2.08	0.52
1:A:226:LYS:HE3	1:C:219:LEU:HD12	1.91	0.52
1:B:88:LYS:HG2	1:B:88:LYS:O	2.08	0.52
1:B:103:ASP:CB	1:B:181:LEU:HD11	2.39	0.52
1:A:226:LYS:HD2	1:C:219:LEU:HD12	1.84	0.52
1:C:50:TRP:HZ3	3:C:810:HOH:O	1.90	0.52
1:A:195:LYS:HD2	2:A:601:AC9:C2	2.40	0.52
1:C:8:TRP:O	1:C:12:LYS:HB2	2.10	0.52
1:A:222:LEU:HD21	2:B:603:AC9:H151	1.92	0.52
2:B:603:AC9:H42	1:C:219:LEU:CD2	2.40	0.52
1:C:195:LYS:NZ	2:C:606:AC9:H43	2.24	0.52
1:B:179:GLU:O	1:B:183:GLU:HG3	2.09	0.52
1:B:2:GLU:O	1:B:86:MET:HE3	2.09	0.52
1:A:195:LYS:HE2	1:A:239:LYS:NZ	2.25	0.52
1:B:230:LEU:HD12	1:B:230:LEU:N	2.25	0.52
1:B:44:LEU:HD22	3:B:607:HOH:O	2.09	0.52
1:B:54:THR:O	1:B:58:SER:CB	2.57	0.52
1:C:120:GLU:HG2	3:C:760:HOH:O	2.10	0.52
1:C:237:THR:O	1:C:241:ASN:OD1	2.28	0.51
1:B:145:GLY:HA2	3:B:745:HOH:O	2.09	0.51
1:C:226:LYS:C	3:C:701:HOH:O	2.44	0.51
1:C:98:GLN:HB2	1:C:99:PRO:HD3	1.92	0.51
1:A:218:LEU:O	1:A:222:LEU:CD1	2.58	0.51
1:A:65:GLY:HA2	3:A:679:HOH:O	2.10	0.51
1:B:58:SER:O	1:B:62:GLU:HG3	2.10	0.51
1:A:34:GLU:HG2	1:A:156:VAL:CG1	2.40	0.51

Continued on next page...

Continued from previous page...

Atom-1	Atom-2	Distance(Å)	Clash(Å)
1:C:6:SER:HB2	3:C:661:HOH:O	2.10	0.51
1:C:7:PRO:HB3	3:C:824:HOH:O	2.11	0.51
1:C:156:VAL:HG13	1:C:157:ASP:N	2.25	0.51
1:C:82:LEU:CD2	1:C:86:MET:HE2	2.40	0.51
1:A:176:ALA:HB2	2:A:602:AC9:H153	1.92	0.51
1:B:75:LEU:O	1:B:79:THR:HG22	2.11	0.51
1:B:120:GLU:HB3	1:B:121:PRO:HD3	1.92	0.51
1:C:211:LEU:CD1	1:C:225:PHE:HE1	2.23	0.51
1:B:133:LYS:HG3	1:B:137:LEU:CD1	2.40	0.51
1:C:21:VAL:CG1	1:C:63:GLN:NE2	2.73	0.51
1:B:126:LEU:CD2	3:B:766:HOH:O	2.57	0.51
1:A:31:SER:CB	3:A:695:HOH:O	2.59	0.51
1:B:46:LEU:O	1:B:50:TRP:HB2	2.11	0.50
1:B:114:LEU:HD13	1:B:114:LEU:C	2.32	0.50
1:C:21:VAL:HG13	1:C:63:GLN:NE2	2.25	0.50
1:C:104:PHE:CZ	3:C:793:HOH:O	2.55	0.50
1:B:10:ARG:HH11	1:B:182:LYS:HE2	1.77	0.50
1:A:222:LEU:HD11	2:B:603:AC9:C12	2.41	0.50
1:C:211:LEU:CG	1:C:225:PHE:CE1	2.94	0.50
1:B:57:PHE:CE1	1:B:123:ARG:HD2	2.46	0.50
1:B:208:LYS:HB2	1:B:209:PRO:HD3	1.93	0.50
1:A:219:LEU:HD13	2:B:603:AC9:C14	2.41	0.50
1:B:219:LEU:CD2	1:C:226:LYS:CE	2.77	0.50
1:B:46:LEU:HD22	3:B:674:HOH:O	2.11	0.50
1:B:137:LEU:HD22	1:B:138:GLN:OE1	2.11	0.50
1:C:20:ASP:O	1:C:24:ASP:OD2	2.29	0.50
1:C:187:ALA:O	1:C:194:ALA:HB3	2.11	0.50
1:B:107:LYS:NZ	1:B:174:LEU:CA	2.75	0.50
1:B:144:LEU:CD2	1:B:144:LEU:H	2.21	0.50
1:C:208:LYS:CG	1:C:209:PRO:CD	2.74	0.50
1:C:91:GLU:O	1:C:93:VAL:N	2.44	0.50
1:B:126:LEU:HD22	3:B:766:HOH:O	2.11	0.50
1:B:243:GLN:HG3	3:B:689:HOH:O	2.12	0.50
1:B:107:LYS:HZ3	1:B:173:ARG:C	2.15	0.50
1:B:53:VAL:HG11	1:B:123:ARG:HE	1.77	0.50
1:A:133:LYS:HA	1:A:137:LEU:HD12	1.94	0.50
2:B:603:AC9:H41	1:C:219:LEU:HA	1.93	0.50
1:C:133:LYS:CA	1:C:137:LEU:HD12	2.41	0.50
1:C:14:LEU:HG	3:C:622:HOH:O	2.11	0.50
1:C:85:GLU:HB3	3:C:673:HOH:O	2.11	0.50
2:B:603:AC9:C4	1:C:219:LEU:CD2	2.85	0.49
1:B:44:LEU:CD2	3:B:607:HOH:O	2.60	0.49

Continued on next page...

Continued from previous page...

Atom-1	Atom-2	Distance(Å)	Clash(Å)
1:C:188:ARG:NH2	2:C:606:AC9:H42	2.26	0.49
1:B:42:LEU:CD1	3:B:680:HOH:O	2.56	0.49
1:C:134:LEU:HD11	1:C:151:ARG:NH2	2.27	0.49
1:C:144:LEU:N	1:C:144:LEU:CD2	2.60	0.49
1:C:214:LEU:C	1:C:216:GLN:N	2.65	0.49
1:B:90:LEU:O	1:B:93:VAL:CG2	2.52	0.49
1:B:126:LEU:CD1	3:B:766:HOH:O	2.61	0.49
1:A:222:LEU:HD22	2:B:603:AC9:C15	2.43	0.49
1:C:144:LEU:C	1:C:148:MET:HE3	2.33	0.49
1:C:108:TRP:HA	1:C:111:GLU:HG2	1.95	0.49
1:B:211:LEU:CD1	1:B:221:VAL:HG11	2.35	0.49
1:A:188:ARG:HD2	2:A:601:AC9:C4	2.39	0.49
1:B:228:SER:HB2	3:B:725:HOH:O	2.11	0.49
1:C:238:LYS:N	1:C:238:LYS:CD	2.76	0.49
1:C:211:LEU:HG	1:C:225:PHE:CE1	2.47	0.49
1:A:31:SER:CA	3:A:695:HOH:O	2.61	0.49
1:A:197:THR:HG21	3:A:668:HOH:O	2.12	0.49
1:B:188:ARG:CD	3:B:632:HOH:O	2.61	0.49
1:B:236:TYR:OH	2:B:604:AC9:C6	2.61	0.49
1:C:178:LEU:HD23	3:C:793:HOH:O	2.12	0.49
1:A:215:ARG:CD	3:A:714:HOH:O	2.50	0.49
1:C:216:GLN:CD	1:C:220:PRO:HG2	2.32	0.49
1:C:199:HIS:ND1	1:C:203:LEU:HD11	2.27	0.49
2:C:607:AC9:C13	3:C:801:HOH:O	2.60	0.48
1:A:202:THR:CG2	3:A:615:HOH:O	2.51	0.48
1:B:143:PRO:HD3	3:B:619:HOH:O	2.12	0.48
1:A:31:SER:HA	3:A:695:HOH:O	2.13	0.48
1:C:136:GLU:N	1:C:136:GLU:OE1	2.44	0.48
1:C:7:PRO:CG	3:C:824:HOH:O	2.59	0.48
1:A:173:ARG:HA	1:A:173:ARG:HE	1.77	0.48
1:A:34:GLU:HG2	1:A:156:VAL:HG13	1.96	0.48
1:C:164:ALA:HB2	3:C:690:HOH:O	2.13	0.48
1:B:111:GLU:O	1:B:115:TYR:HB2	2.14	0.48
1:A:206:LYS:CE	2:A:602:AC9:H93	2.43	0.48
1:A:187:ALA:HB1	1:A:198:GLU:OE1	2.14	0.48
1:B:222:LEU:HD11	2:B:603:AC9:C10	2.43	0.48
1:C:227:VAL:HG13	3:C:701:HOH:O	2.13	0.48
1:C:122:LEU:HD13	1:C:162:HIS:CD2	2.48	0.48
2:B:603:AC9:H52	1:C:222:LEU:CD1	2.37	0.48
1:C:151:ARG:O	1:C:154:ALA:HB3	2.14	0.48
1:C:144:LEU:O	1:C:148:MET:HE2	2.14	0.48
1:C:209:PRO:CA	3:C:656:HOH:O	2.56	0.48

Continued on next page...

Continued from previous page...

Atom-1	Atom-2	Distance(Å)	Clash(Å)
1:B:41:GLN:HG2	3:B:665:HOH:O	2.13	0.48
1:C:133:LYS:CB	1:C:137:LEU:HD12	2.44	0.48
1:A:179:GLU:C	1:A:179:GLU:CD	2.72	0.48
1:C:211:LEU:CB	1:C:221:VAL:HG13	2.42	0.47
1:B:21:VAL:CG2	1:B:63:GLN:CG	2.92	0.47
1:B:156:VAL:CG1	3:B:788:HOH:O	2.61	0.47
1:A:219:LEU:HD22	2:B:603:AC9:C14	2.44	0.47
1:B:238:LYS:HG3	1:B:239:LYS:HG3	1.95	0.47
1:C:195:LYS:NZ	2:C:606:AC9:C4	2.78	0.47
1:B:45:LYS:HB2	1:B:46:LEU:H	1.63	0.47
1:C:6:SER:N	1:C:7:PRO:HD2	2.29	0.47
1:B:3:PRO:CG	3:B:623:HOH:O	2.60	0.47
1:B:1:ASP:C	1:B:2:GLU:HG2	2.34	0.47
1:B:24:ASP:O	1:B:27:ARG:CB	2.63	0.47
1:B:8:TRP:HZ3	1:B:11:VAL:CG2	2.18	0.47
1:B:40:LYS:O	1:B:40:LYS:HG3	2.15	0.47
1:C:134:LEU:HD23	1:C:134:LEU:O	2.15	0.47
1:B:134:LEU:HD13	1:B:151:ARG:HE	1.80	0.47
1:C:82:LEU:O	1:C:86:MET:O	2.33	0.47
1:B:176:ALA:O	1:B:180:ALA:HB2	2.15	0.47
1:C:33:PHE:O	1:C:37:ALA:HB3	2.14	0.47
1:C:91:GLU:C	1:C:93:VAL:H	2.17	0.47
1:B:122:LEU:HD12	1:B:162:HIS:CG	2.39	0.47
1:A:195:LYS:HZ3	2:A:601:AC9:C1	2.27	0.47
1:B:130:ALA:HA	1:B:133:LYS:NZ	2.30	0.47
1:B:116:ARG:HA	1:B:119:VAL:HG11	1.96	0.47
1:B:224:SER:CB	3:B:649:HOH:O	2.51	0.47
1:C:8:TRP:C	1:C:12:LYS:HD2	2.36	0.47
1:B:156:VAL:HB	3:B:788:HOH:O	2.14	0.47
1:B:140:LYS:HD2	3:B:635:HOH:O	2.15	0.47
1:C:176:ALA:HB2	3:C:801:HOH:O	2.15	0.47
1:B:65:GLY:O	1:B:69:GLN:HB2	2.15	0.47
1:C:145:GLY:HA2	1:C:148:MET:HE1	1.94	0.46
1:C:211:LEU:HD13	1:C:221:VAL:CB	2.44	0.46
1:C:236:TYR:CD2	1:C:236:TYR:N	2.82	0.46
1:B:188:ARG:HD3	3:B:632:HOH:O	2.15	0.46
1:B:114:LEU:CD1	1:B:114:LEU:O	2.58	0.46
1:C:46:LEU:O	1:C:50:TRP:HB2	2.15	0.46
1:C:211:LEU:HB3	1:C:221:VAL:CG1	2.39	0.46
1:B:6:SER:H	1:B:7:PRO:HD2	1.77	0.46
1:B:189:LEU:H	1:B:189:LEU:CD1	2.29	0.46
1:B:86:MET:CE	3:B:638:HOH:O	2.64	0.46

Continued on next page...

Continued from previous page...

Atom-1	Atom-2	Distance(Å)	Clash(Å)
1:A:62:GLU:CD	3:A:618:HOH:O	2.54	0.46
1:B:95:ALA:HA	3:B:705:HOH:O	2.16	0.46
1:B:71:PHE:CE2	1:B:75:LEU:HD22	2.50	0.46
1:C:238:LYS:HE3	1:C:238:LYS:CA	2.46	0.46
1:C:195:LYS:HZ3	2:C:606:AC9:H43	1.80	0.46
1:B:208:LYS:O	1:B:212:GLU:HG2	2.16	0.46
1:B:140:LYS:CD	3:B:635:HOH:O	2.64	0.46
1:B:129:GLY:O	1:B:133:LYS:NZ	2.49	0.46
1:B:204:SER:HA	1:B:229:PHE:HZ	1.81	0.46
1:C:141:LEU:HD22	3:C:759:HOH:O	2.16	0.46
1:A:172:GLN:HG2	1:A:173:ARG:NH1	2.31	0.45
1:C:36:SER:CB	1:C:40:LYS:CE	2.74	0.45
1:B:53:VAL:CG1	1:B:123:ARG:HE	2.28	0.45
1:C:108:TRP:O	1:C:111:GLU:CG	2.64	0.45
1:A:124:ALA:HB1	3:A:651:HOH:O	2.16	0.45
1:B:126:LEU:HD13	3:B:766:HOH:O	2.17	0.45
1:B:219:LEU:HG	1:C:226:LYS:CD	2.47	0.45
1:C:191:GLU:OE1	1:C:194:ALA:HB2	2.16	0.45
1:A:47:LEU:HA	1:A:51:ASP:HB2	1.99	0.45
1:B:145:GLY:HA3	3:B:698:HOH:O	2.16	0.45
1:C:176:ALA:CB	3:C:787:HOH:O	2.64	0.45
1:B:238:LYS:HB2	3:B:753:HOH:O	2.16	0.45
1:B:70:GLU:O	1:B:74:ASN:HB2	2.17	0.45
1:B:110:GLU:HG2	3:B:792:HOH:O	2.16	0.45
1:A:195:LYS:HG3	3:A:690:HOH:O	2.16	0.45
1:A:177:ARG:HD3	1:A:181:LEU:HD23	1.99	0.45
1:C:216:GLN:HG3	1:C:220:PRO:HG2	1.98	0.45
1:C:44:LEU:HD21	1:C:46:LEU:HD12	1.99	0.45
1:B:222:LEU:CD1	2:B:603:AC9:C7	2.89	0.45
1:C:188:ARG:NE	2:C:606:AC9:C4	2.80	0.45
1:B:236:TYR:O	1:B:240:LEU:HD13	2.17	0.44
1:A:105:GLN:HG2	1:A:109:GLN:HE21	1.81	0.44
1:A:226:LYS:CD	1:C:219:LEU:HD12	2.44	0.44
1:B:139:GLU:HG2	1:B:140:LYS:N	2.30	0.44
1:C:238:LYS:H	1:C:238:LYS:HD2	1.82	0.44
1:C:232:ALA:HB1	1:C:236:TYR:OH	2.18	0.44
1:C:227:VAL:CG1	3:C:701:HOH:O	2.66	0.44
1:A:240:LEU:HD11	3:A:690:HOH:O	2.17	0.44
1:C:169:GLU:HG3	1:C:173:ARG:HH11	1.81	0.44
1:C:65:GLY:C	3:C:761:HOH:O	2.55	0.44
1:C:135:HIS:HB2	1:C:136:GLU:OE1	2.18	0.44
1:B:8:TRP:HZ3	1:B:182:LYS:HD3	1.83	0.44

Continued on next page...

Continued from previous page...

Atom-1	Atom-2	Distance(Å)	Clash(Å)
1:B:166:TYR:O	1:B:170:LEU:HB2	2.18	0.44
1:B:141:LEU:HD13	1:B:141:LEU:H	1.83	0.44
1:C:54:THR:HG21	3:C:713:HOH:O	2.18	0.44
1:B:141:LEU:N	1:B:141:LEU:CD1	2.80	0.43
1:A:14:LEU:HD12	1:A:178:LEU:HD21	2.00	0.43
1:B:232:ALA:O	1:B:236:TYR:HD1	2.00	0.43
1:C:101:LEU:HD13	1:C:101:LEU:HA	1.91	0.43
1:C:195:LYS:H	1:C:195:LYS:HG3	1.31	0.43
1:C:71:PHE:HD1	3:C:622:HOH:O	1.98	0.43
1:B:179:GLU:O	1:B:183:GLU:CG	2.66	0.43
1:B:65:GLY:N	1:B:66:PRO:CD	2.82	0.43
1:B:95:ALA:CA	3:B:705:HOH:O	2.64	0.43
1:C:60:LEU:CD1	1:C:115:TYR:OH	2.52	0.43
1:B:60:LEU:O	1:B:64:LEU:HG	2.19	0.43
1:C:107:LYS:HE3	1:C:177:ARG:HE	1.84	0.43
1:C:195:LYS:HZ3	2:C:606:AC9:C4	2.31	0.43
1:C:188:ARG:NE	2:C:606:AC9:H41	2.33	0.43
1:B:19:VAL:O	1:B:23:LYS:HB2	2.18	0.43
1:B:230:LEU:H	1:B:230:LEU:HD12	1.83	0.43
1:C:108:TRP:C	1:C:111:GLU:HG2	2.39	0.43
1:A:206:LYS:C	1:A:206:LYS:HD3	2.39	0.43
1:B:193:HIS:CE1	1:B:195:LYS:HE2	2.53	0.43
1:A:7:PRO:HB2	3:A:657:HOH:O	2.18	0.43
1:C:29:TYR:HB3	1:C:33:PHE:HE1	1.80	0.43
1:C:133:LYS:HG2	1:C:137:LEU:CD1	2.49	0.43
1:B:44:LEU:HD21	3:B:646:HOH:O	2.18	0.43
1:C:88:LYS:HB2	1:C:88:LYS:HZ3	1.83	0.43
1:A:219:LEU:HD22	2:B:603:AC9:H141	2.01	0.42
1:C:73:ASP:C	1:C:77:LYS:HE2	2.40	0.42
1:B:158:ALA:O	1:B:162:HIS:HD2	2.03	0.42
1:A:218:LEU:HB3	1:A:222:LEU:HD21	2.01	0.42
2:B:603:AC9:H51	1:C:218:LEU:HD22	2.02	0.42
1:C:211:LEU:HA	1:C:211:LEU:HD23	1.76	0.42
1:B:133:LYS:HA	1:B:137:LEU:HB2	2.01	0.42
1:A:107:LYS:HE2	1:A:177:ARG:HB2	2.01	0.42
1:C:119:VAL:HG22	3:C:700:HOH:O	2.19	0.42
1:B:188:ARG:HD3	1:B:189:LEU:HD11	2.00	0.42
1:B:230:LEU:H	1:B:230:LEU:CD1	2.33	0.42
1:C:134:LEU:CD1	1:C:151:ARG:NH2	2.82	0.42
1:A:70:GLU:N	3:A:666:HOH:O	2.52	0.42
1:A:7:PRO:CB	3:A:657:HOH:O	2.66	0.42
2:B:603:AC9:H43	3:C:629:HOH:O	2.20	0.42

Continued on next page...

Continued from previous page...

Atom-1	Atom-2	Distance(Å)	Clash(Å)
1:C:88:LYS:NZ	1:C:89:ASP:O	2.48	0.42
1:C:160:ARG:HG3	3:C:609:HOH:O	2.18	0.42
1:C:96:LYS:HG2	1:C:189:LEU:HD22	2.02	0.42
1:B:46:LEU:HB3	3:B:794:HOH:O	2.18	0.42
1:B:110:GLU:O	1:B:114:LEU:CB	2.68	0.42
1:C:11:VAL:HA	1:C:178:LEU:HD13	2.00	0.42
1:B:137:LEU:CD2	1:B:138:GLN:OE1	2.67	0.42
1:C:182:LYS:NZ	1:C:182:LYS:CB	2.73	0.42
1:B:177:ARG:HG3	1:B:181:LEU:HD12	2.01	0.42
1:B:40:LYS:HZ3	1:B:44:LEU:H	1.66	0.42
1:B:49:ASN:O	1:B:53:VAL:HG23	2.20	0.42
1:B:159:LEU:HD23	3:B:766:HOH:O	2.20	0.42
1:A:116:ARG:HD3	3:A:664:HOH:O	2.19	0.42
1:B:169:GLU:HG3	1:B:173:ARG:HH11	1.85	0.42
1:C:5:GLN:HA	1:C:5:GLN:HE21	1.85	0.42
1:C:53:VAL:CG1	1:C:123:ARG:HD3	2.31	0.41
1:C:151:ARG:HA	1:C:154:ALA:HB3	2.02	0.41
1:C:82:LEU:HD21	1:C:86:MET:CG	2.37	0.41
1:C:39:GLY:O	1:C:40:LYS:O	2.38	0.41
1:B:112:MET:O	1:B:116:ARG:HG3	2.19	0.41
1:C:122:LEU:HD13	1:C:162:HIS:CB	2.50	0.41
1:B:17:VAL:O	1:B:21:VAL:HB	2.21	0.41
1:C:82:LEU:HD23	1:C:86:MET:C	2.40	0.41
1:C:8:TRP:HB2	1:C:12:LYS:NZ	2.27	0.41
1:B:219:LEU:CD2	2:B:603:AC9:C9	2.73	0.41
1:B:57:PHE:O	1:B:61:ARG:CB	2.63	0.41
1:C:85:GLU:CB	3:C:673:HOH:O	2.69	0.41
1:C:241:ASN:HB3	3:C:814:HOH:O	2.20	0.41
1:B:44:LEU:CD2	1:B:47:LEU:CD1	2.59	0.41
1:B:84:GLN:HG2	3:B:656:HOH:O	2.20	0.41
1:C:56:THR:C	1:C:60:LEU:HD23	2.21	0.41
1:A:240:LEU:N	3:A:613:HOH:O	2.53	0.41
1:B:146:GLU:HB3	1:B:147:GLU:H	1.61	0.41
1:C:164:ALA:HB2	3:C:752:HOH:O	2.20	0.41
1:B:156:VAL:HG12	3:B:788:HOH:O	2.19	0.41
1:B:190:ALA:HB3	1:B:191:GLU:OE1	2.21	0.41
1:C:72:TRP:HZ2	1:C:105:GLN:HA	1.85	0.41
1:B:115:TYR:CE1	1:B:170:LEU:CD2	2.91	0.41
1:B:51:ASP:CA	1:B:54:THR:HG22	2.48	0.40
1:B:141:LEU:CD1	1:B:141:LEU:H	2.34	0.40
1:B:183:GLU:O	1:B:187:ALA:HB3	2.21	0.40
1:A:195:LYS:HZ2	2:A:601:AC9:C3	2.35	0.40

Continued on next page...

Continued from previous page...

Atom-1	Atom-2	Distance(Å)	Clash(Å)
1:A:191:GLU:HG2	3:A:689:HOH:O	2.21	0.40
1:B:107:LYS:HZ3	1:B:173:ARG:HG3	1.87	0.40
1:C:107:LYS:NZ	3:C:764:HOH:O	2.53	0.40
1:C:199:HIS:HD2	2:C:606:AC9:H52	1.86	0.40
1:A:222:LEU:H	1:A:222:LEU:HG	1.43	0.40
1:C:166:TYR:HD1	3:C:672:HOH:O	2.04	0.40
1:C:45:LYS:CG	1:C:45:LYS:O	2.67	0.40

All (18) symmetry-related close contacts are listed below. The label for Atom-2 includes the symmetry operator and encoded unit-cell translations to be applied.

Atom-1	Atom-2	Distance(Å)	Clash(Å)
1:A:2:GLU:CA	3:B:690:HOH:O[1_556]	0.74	1.46
1:A:1:ASP:CB	3:B:670:HOH:O[1_556]	1.15	1.05
1:A:2:GLU:CB	3:B:690:HOH:O[1_556]	1.27	0.93
1:A:1:ASP:CG	3:B:737:HOH:O[1_556]	1.41	0.79
1:A:1:ASP:O	1:B:45:LYS:NZ[1_556]	1.49	0.71
1:A:140:LYS:CB	1:C:227:VAL:CG1[4_655]	1.55	0.65
1:B:220:PRO:CA	3:A:625:HOH:O[3_544]	1.78	0.42
1:A:1:ASP:OD2	3:B:737:HOH:O[1_556]	1.80	0.40
1:A:1:ASP:OD1	3:B:737:HOH:O[1_556]	1.81	0.39
1:A:2:GLU:N	3:B:690:HOH:O[1_556]	1.84	0.36
1:A:2:GLU:CG	3:B:690:HOH:O[1_556]	1.94	0.26
1:B:220:PRO:N	3:A:625:HOH:O[3_544]	2.06	0.14
1:A:140:LYS:O	1:C:227:VAL:CG2[4_655]	2.09	0.11
1:A:2:GLU:C	3:B:690:HOH:O[1_556]	2.11	0.09
1:A:1:ASP:C	1:B:45:LYS:NZ[1_556]	2.16	0.04
1:A:1:ASP:CG	3:B:670:HOH:O[1_556]	2.16	0.04
1:A:84:GLN:OE1	3:B:658:HOH:O[3_545]	2.18	0.02
1:A:1:ASP:O	1:B:45:LYS:CE[1_556]	2.19	0.01

5.3 Torsion angles

5.3.1 Protein backbone ⓘ

In the following table, the Percentiles column shows the percent Ramachandran outliers of the chain as a percentile score with respect to all X-ray entries followed by that with respect to entries of similar resolution. The Analysed column shows the number of residues for which the backbone conformation was analysed, and the total number of residues.

Mol	Chain	Analysed	Favoured	Allowed	Outliers	Percentiles	
1	A	241/243 (99%)	220 (91%)	14 (6%)	7 (3%)	7	6
1	B	241/243 (99%)	207 (86%)	20 (8%)	14 (6%)	3	1
1	C	241/243 (99%)	213 (88%)	15 (6%)	13 (5%)	3	1
All	All	723/729 (99%)	640 (88%)	49 (7%)	34 (5%)	4	2

All (34) Ramachandran outliers are listed below:

Mol	Chain	Res	Type
1	A	144	LEU
1	B	7	PRO
1	B	36	SER
1	B	46	LEU
1	B	87	SER
1	B	142	SER
1	B	143	PRO
1	C	2	GLU
1	C	8	TRP
1	C	40	LYS
1	C	92	GLU
1	C	139	GLU
1	C	142	SER
1	C	194	ALA
1	C	215	ARG
1	C	217	GLY
1	C	218	LEU
1	A	8	TRP
1	A	40	LYS
1	A	194	ALA
1	B	3	PRO
1	B	41	GLN
1	B	194	ALA
1	C	141	LEU
1	A	142	SER
1	B	5	GLN
1	B	45	LYS
1	B	141	LEU
1	A	146	GLU
1	B	139	GLU
1	C	3	PRO
1	A	145	GLY
1	C	7	PRO
1	B	4	PRO

5.3.2 Protein sidechains ⓘ

In the following table, the Percentiles column shows the percent sidechain outliers of the chain as a percentile score with respect to all X-ray entries followed by that with respect to entries of similar resolution. The Analysed column shows the number of residues for which the sidechain conformation was analysed, and the total number of residues.

Mol	Chain	Analysed	Rotameric	Outliers	Percentiles	
1	A	214/214 (100%)	191 (89%)	23 (11%)	10	13
1	B	214/214 (100%)	192 (90%)	22 (10%)	10	15
1	C	214/214 (100%)	191 (89%)	23 (11%)	10	13
All	All	642/642 (100%)	574 (89%)	68 (11%)	10	14

All (68) residues with a non-rotameric sidechain are listed below:

Mol	Chain	Res	Type
1	A	6	SER
1	A	57	PHE
1	A	73	ASP
1	A	82	LEU
1	A	86	MET
1	A	88	LYS
1	A	91	GLU
1	A	115	TYR
1	A	138	GLN
1	A	139	GLU
1	A	171	ARG
1	A	173	ARG
1	A	179	GLU
1	A	188	ARG
1	A	192	TYR
1	A	193	HIS
1	A	195	LYS
1	A	197	THR
1	A	199	HIS
1	A	206	LYS
1	A	222	LEU
1	A	230	LEU
1	A	236	TYR
1	B	20	ASP
1	B	21	VAL
1	B	23	LYS
1	B	42	LEU

Continued on next page...

Continued from previous page...

Mol	Chain	Res	Type
1	B	45	LYS
1	B	85	GLU
1	B	86	MET
1	B	88	LYS
1	B	112	MET
1	B	114	LEU
1	B	131	ARG
1	B	133	LYS
1	B	148	MET
1	B	151	ARG
1	B	173	ARG
1	B	174	LEU
1	B	189	LEU
1	B	192	TYR
1	B	199	HIS
1	B	219	LEU
1	B	223	GLU
1	B	238	LYS
1	C	6	SER
1	C	28	ASP
1	C	49	ASN
1	C	82	LEU
1	C	85	GLU
1	C	88	LYS
1	C	112	MET
1	C	136	GLU
1	C	138	GLN
1	C	139	GLU
1	C	144	LEU
1	C	148	MET
1	C	163	LEU
1	C	168	ASP
1	C	170	LEU
1	C	182	LYS
1	C	195	LYS
1	C	211	LEU
1	C	215	ARG
1	C	230	LEU
1	C	234	GLU
1	C	236	TYR
1	C	238	LYS

Some sidechains can be flipped to improve hydrogen bonding and reduce clashes. All (17) such

sidechains are listed below:

Mol	Chain	Res	Type
1	A	109	GLN
1	A	127	GLN
1	A	138	GLN
1	B	84	GLN
1	B	98	GLN
1	B	155	HIS
1	B	162	HIS
1	B	243	GLN
1	C	5	GLN
1	C	49	ASN
1	C	63	GLN
1	C	69	GLN
1	C	132	GLN
1	C	172	GLN
1	C	199	HIS
1	C	216	GLN
1	C	243	GLN

5.3.3 RNA ⓘ

There are no RNA chains in this entry.

5.4 Non-standard residues in protein, DNA, RNA chains ⓘ

There are no non-standard protein/DNA/RNA residues in this entry.

5.5 Carbohydrates ⓘ

There are no carbohydrates in this entry.

5.6 Ligand geometry ⓘ

7 ligands are modelled in this entry.

In the following table, the Counts columns list the number of bonds (or angles) for which Mogul statistics could be retrieved, the number of bonds (or angles) that are observed in the model and the number of bonds (or angles) that are defined in the chemical component dictionary. The Link column lists molecule types, if any, to which the group is linked. The Z score for a bond length (or angle) is the number of standard deviations the observed value is removed from the expected

value. A bond length (or angle) with $|Z| > 2$ is considered an outlier worth inspection. RMSZ is the root-mean-square of all Z scores of the bond lengths (or angles).

Mol	Type	Chain	Res	Link	Bond lengths			Bond angles		
					Counts	RMSZ	$\# Z > 2$	Counts	RMSZ	$\# Z > 2$
2	AC9	A	601	-	24,24,24	1.21	3 (12%)	21,42,42	1.76	2 (9%)
2	AC9	A	602	-	24,24,24	1.32	3 (12%)	21,42,42	1.82	2 (9%)
2	AC9	B	603	-	24,24,24	1.23	3 (12%)	21,42,42	1.71	2 (9%)
2	AC9	B	604	-	24,24,24	1.20	3 (12%)	21,42,42	1.79	2 (9%)
2	AC9	B	605	-	24,24,24	1.30	3 (12%)	21,42,42	1.79	2 (9%)
2	AC9	C	606	-	24,24,24	1.19	3 (12%)	21,42,42	1.68	2 (9%)
2	AC9	C	607	-	24,24,24	1.22	2 (8%)	21,42,42	1.83	2 (9%)

In the following table, the Chirals column lists the number of chiral outliers, the number of chiral centers analysed, the number of these observed in the model and the number defined in the chemical component dictionary. Similar counts are reported in the Torsion and Rings columns. '-' means no outliers of that kind were identified.

Mol	Type	Chain	Res	Link	Chirals	Torsions	Rings
2	AC9	A	601	-	-	0/0/54/54	0/3/3/3
2	AC9	A	602	-	-	0/0/54/54	0/3/3/3
2	AC9	B	603	-	-	0/0/54/54	0/3/3/3
2	AC9	B	604	-	-	0/0/54/54	0/3/3/3
2	AC9	B	605	-	-	0/0/54/54	0/3/3/3
2	AC9	C	606	-	-	0/0/54/54	0/3/3/3
2	AC9	C	607	-	-	0/0/54/54	0/3/3/3

All (20) bond length outliers are listed below:

Mol	Chain	Res	Type	Atoms	Z	Observed(Å)	Ideal(Å)
2	A	602	AC9	C9-C6	-4.28	1.41	1.51
2	A	601	AC9	C9-C6	-3.98	1.41	1.51
2	B	605	AC9	CR-O4	-3.62	1.90	1.95
2	C	607	AC9	C9-C6	-3.57	1.42	1.51
2	B	603	AC9	CR-O4	-3.50	1.91	1.95
2	B	604	AC9	C9-C6	-3.40	1.43	1.51
2	C	606	AC9	C9-C6	-3.38	1.43	1.51
2	B	605	AC9	C9-C6	-3.16	1.43	1.51
2	B	603	AC9	C9-C6	-2.98	1.44	1.51
2	C	606	AC9	C6-C7	2.88	1.47	1.39
2	B	603	AC9	C6-C7	2.72	1.46	1.39
2	C	607	AC9	C6-C7	2.65	1.46	1.39
2	A	601	AC9	C6-C7	2.64	1.46	1.39

Continued on next page...

Continued from previous page...

Mol	Chain	Res	Type	Atoms	Z	Observed(Å)	Ideal(Å)
2	C	606	AC9	CR-O4	-2.58	1.92	1.95
2	A	601	AC9	CR-O4	-2.55	1.92	1.95
2	A	602	AC9	C6-C7	2.54	1.46	1.39
2	A	602	AC9	CR-O4	-2.46	1.92	1.95
2	B	604	AC9	C6-C7	2.28	1.45	1.39
2	B	604	AC9	CR-O4	-2.18	1.92	1.95
2	B	605	AC9	C6-C7	2.03	1.45	1.39

All (14) bond angle outliers are listed below:

Mol	Chain	Res	Type	Atoms	Z	Observed(°)	Ideal(°)
2	C	607	AC9	O3-C6-C7	-6.70	116.55	124.70
2	A	602	AC9	O3-C6-C7	-6.68	116.57	124.70
2	B	604	AC9	O3-C6-C7	-6.54	116.74	124.70
2	B	605	AC9	O3-C6-C7	-6.50	116.79	124.70
2	A	601	AC9	O3-C6-C7	-6.49	116.81	124.70
2	B	603	AC9	O3-C6-C7	-6.03	117.36	124.70
2	C	606	AC9	O3-C6-C7	-5.88	117.54	124.70
2	C	607	AC9	O3-C6-C9	4.16	120.71	115.16
2	C	606	AC9	O3-C6-C9	4.16	120.71	115.16
2	A	602	AC9	O3-C6-C9	4.06	120.58	115.16
2	B	603	AC9	O3-C6-C9	3.93	120.41	115.16
2	A	601	AC9	O3-C6-C9	3.85	120.31	115.16
2	B	604	AC9	O3-C6-C9	3.74	120.15	115.16
2	B	605	AC9	O3-C6-C9	3.44	119.75	115.16

There are no chirality outliers.

There are no torsion outliers.

There are no ring outliers.

5.7 Other polymers ⓘ

There are no such residues in this entry.

5.8 Polymer linkage issues

There are no chain breaks in this entry.

6 Fit of model and data ⓘ

6.1 Protein, DNA and RNA chains ⓘ

In the following table, the column labelled ‘#RSRZ> 2’ contains the number (and percentage) of RSRZ outliers, followed by percent RSRZ outliers for the chain as percentile scores relative to all X-ray entries and entries of similar resolution. The OWAB column contains the minimum, median, 95th percentile and maximum values of the occupancy-weighted average B-factor per residue. The column labelled ‘Q< 0.9’ lists the number of (and percentage) of residues with an average occupancy less than 0.9.

Mol	Chain	Analysed	<RSRZ>	#RSRZ>2	OWAB(Å ²)	Q<0.9
1	A	243/243 (100%)	0.26	10 (4%) 35 33	22, 27, 31, 33	0
1	B	243/243 (100%)	0.41	12 (4%) 28 26	20, 27, 31, 33	0
1	C	243/243 (100%)	0.34	10 (4%) 35 33	23, 27, 31, 32	0
All	All	729/729 (100%)	0.34	32 (4%) 33 30	20, 27, 31, 33	0

All (32) RSRZ outliers are listed below:

Mol	Chain	Res	Type	RSRZ
1	B	42	LEU	9.4
1	B	190	ALA	5.6
1	A	152	ALA	4.9
1	B	83	ARG	4.1
1	B	229	PHE	3.9
1	C	38	LEU	3.6
1	C	222	LEU	3.4
1	C	3	PRO	3.1
1	A	30	VAL	3.0
1	B	144	LEU	2.9
1	B	1	ASP	2.9
1	A	101	LEU	2.8
1	A	41	GLN	2.7
1	C	215	ARG	2.6
1	C	56	THR	2.5
1	C	130	ALA	2.5
1	B	46	LEU	2.5
1	A	64	LEU	2.3
1	A	187	ALA	2.3
1	C	47	LEU	2.2
1	A	39	GLY	2.2
1	C	54	THR	2.2
1	B	15	ALA	2.2

Continued on next page...

Continued from previous page...

Mol	Chain	Res	Type	RSRZ
1	B	211	LEU	2.2
1	B	71	PHE	2.2
1	B	197	THR	2.1
1	A	242	THR	2.1
1	B	100	TYR	2.1
1	A	5	GLN	2.1
1	A	180	ALA	2.1
1	C	170	LEU	2.1
1	C	194	ALA	2.0

6.2 Non-standard residues in protein, DNA, RNA chains ⓘ

There are no non-standard protein/DNA/RNA residues in this entry.

6.3 Carbohydrates ⓘ

There are no carbohydrates in this entry.

6.4 Ligands ⓘ

In the following table, the Atoms column lists the number of modelled atoms in the group and the number defined in the chemical component dictionary. LLDF column lists the quality of electron density of the group with respect to its neighbouring residues in protein, DNA or RNA chains. The B-factors column lists the minimum, median, 95th percentile and maximum values of B factors of atoms in the group. The column labelled 'Q < 0.9' lists the number of atoms with occupancy less than 0.9.

Mol	Type	Chain	Res	Atoms	RSR	LLDF	B-factors(Å ²)	Q<0.9
2	AC9	A	601	22/22	0.17	0.13	16,18,20,20	0
2	AC9	B	605	22/22	0.13	-0.67	16,17,18,19	0
2	AC9	C	606	22/22	0.14	-0.88	16,18,19,20	0
2	AC9	A	602	22/22	0.12	-1.28	16,19,20,21	0
2	AC9	C	607	22/22	0.13	-1.30	16,18,20,21	0
2	AC9	B	603	22/22	0.14	-1.34	17,19,20,20	0
2	AC9	B	604	22/22	0.11	-3.85	16,18,19,20	0

6.5 Other polymers ⓘ

There are no such residues in this entry.