



# wwPDB X-ray Structure Validation Summary Report

Feb 27, 2014 – 03:52 PM GMT

PDB ID : 2A1T  
Title : Structure of the human MCAD:ETF E165betaA complex  
Authors : Toogood, H.S.; Van Thiel, A.; Scrutton, N.S.; Leys, D.  
Deposited on : 2005-06-21  
Resolution : 2.80 Å(reported)

This is a wwPDB validation summary report for a publicly released PDB entry.

We welcome your comments at [validation@mail.wwpdb.org](mailto:validation@mail.wwpdb.org)

A user guide is available at <http://wwpdb.org/ValidationPDFNotes.html>

---

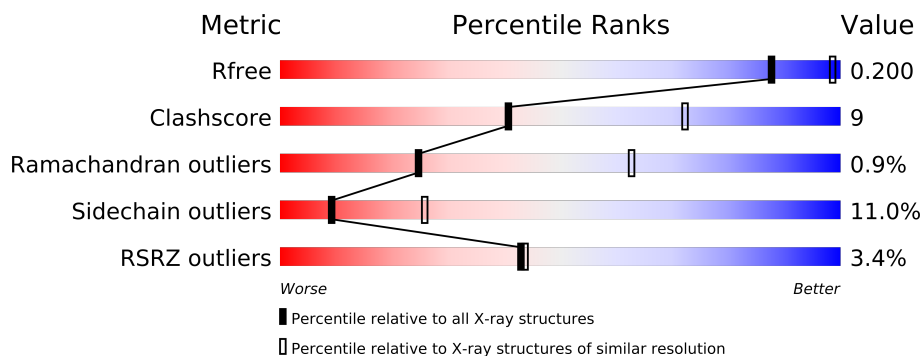
The following versions of software and data (see [references](#)) were used in the production of this report:

MolProbity : 4.02b-467  
Mogul : 1.15 2013  
Xtriage (Phenix) : dev-1323  
EDS : stable22639  
Percentile statistics : 21963  
Refmac : 5.8.0049  
CCP4 : 6.3.0 (Settle)  
Ideal geometry (proteins) : Engh & Huber (2001)  
Ideal geometry (DNA, RNA) : Parkinson et. al. (1996)  
Validation Pipeline (wwPDB-VP) : stable22683

# 1 Overall quality at a glance

The reported resolution of this entry is 2.80 Å.

Percentile scores (ranging between 0-100) for global validation metrics of the entry are shown in the following graphic. The table shows the number of entries on which the scores are based.



Metric	Whole archive (#Entries)	Similar resolution (#Entries, resolution range(Å))
$R_{free}$	66092	1799 (2.80-2.80)
Clashscore	79885	2295 (2.80-2.80)
Ramachandran outliers	78287	2252 (2.80-2.80)
Sidechain outliers	78261	2254 (2.80-2.80)
RSRZ outliers	66119	1802 (2.80-2.80)

The table below summarises the geometric issues observed across the polymeric chains and their fit to the electron density. The red, orange, yellow and green segments on the lower bar indicate the fraction of residues that contain outliers for  $\geq 3$ , 2, 1 and 0 types of geometric quality criteria. The upper red bar (where present) indicates the fraction of residues that have poor fit to the electron density.

Mol	Chain	Length	Quality of chain
1	A	421	
1	B	421	
1	C	421	
1	D	421	
2	R	333	
3	S	255	

## 2 Entry composition

There are 6 unique types of molecules in this entry. The entry contains 16189 atoms, of which 0 are hydrogen and 0 are deuterium.

In the tables below, the ZeroOcc column contains the number of atoms modelled with zero occupancy, the AltConf column contains the number of residues with at least one atom in alternate conformation and the Trace column contains the number of residues modelled with at most 2 atoms.

- Molecule 1 is a protein called Acyl-CoA dehydrogenase, medium-chain specific, mitochondrial precursor.

Mol	Chain	Residues	Atoms					ZeroOcc	AltConf	Trace
1	A	386	Total	C	N	O	S	0	0	0
			2933	1862	496	557	18			
1	B	387	Total	C	N	O	S	0	0	0
			2949	1869	501	561	18			
1	C	388	Total	C	N	O	S	0	0	0
			2961	1875	508	560	18			
1	D	387	Total	C	N	O	S	0	0	0
			2972	1880	508	566	18			

- Molecule 2 is a protein called Electron transfer flavoprotein alpha-subunit, mitochondrial precursor.

Mol	Chain	Residues	Atoms					ZeroOcc	AltConf	Trace
2	R	313	Total	C	N	O	S	0	0	0
			2264	1441	377	437	9			

- Molecule 3 is a protein called Electron transfer flavoprotein beta-subunit.

Mol	Chain	Residues	Atoms					ZeroOcc	AltConf	Trace
3	S	239	Total	C	N	O	S	0	0	0
			1758	1119	294	337	8			

There is a discrepancy between the modelled and reference sequences:

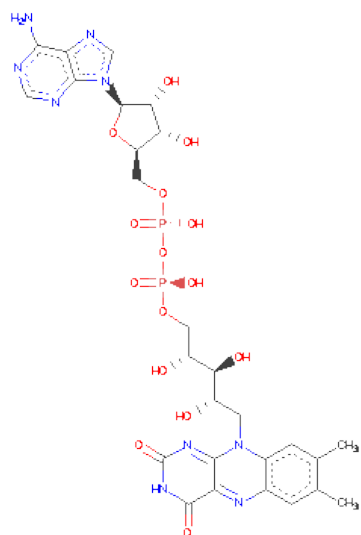
Chain	Residue	Modelled	Actual	Comment	Reference
S	165	ALA	GLU	ENGINEERED	UNP P38117

- Molecule 4 is ADENOSINE MONOPHOSPHATE (three-letter code: AMP) (formula: C<sub>10</sub>H<sub>14</sub>N<sub>5</sub>O<sub>7</sub>P).



Mol	Chain	Residues	Atoms					ZeroOcc	AltConf
4	S	1	Total	C	N	O	P	0	0
			23	10	5	7	1		

- Molecule 5 is FLAVIN-ADENINE DINUCLEOTIDE (three-letter code: FAD) (formula:  $C_{27}H_{33}N_9O_{15}P_2$ ).



Mol	Chain	Residues	Atoms					ZeroOcc	AltConf
5	A	1	Total	C	N	O	P	0	0
			53	27	9	15	2		
5	B	1	Total	C	N	O	P	0	0
			53	27	9	15	2		

*Continued on next page...*

*Continued from previous page...*

Mol	Chain	Residues	Atoms					ZeroOcc	AltConf
5	C	1	Total	C	N	O	P	0	0
			53	27	9	15	2		
5	D	1	Total	C	N	O	P	0	0
			53	27	9	15	2		
5	R	1	Total	C	N	O	P	0	0
			53	27	9	15	2		

- Molecule 6 is water.

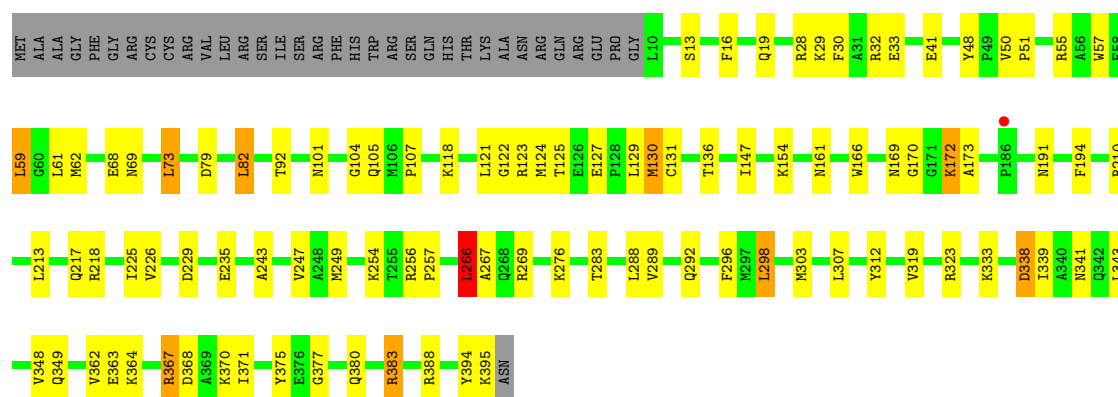
Mol	Chain	Residues	Atoms		ZeroOcc	AltConf
6	A	13	Total	O	0	0
			13	13		
6	B	9	Total	O	0	0
			9	9		
6	C	17	Total	O	0	0
			17	17		
6	D	12	Total	O	0	0
			12	12		
6	R	3	Total	O	0	0
			3	3		
6	S	10	Total	O	0	0
			10	10		

### 3 Residue-property plots

These plots are drawn for all protein, RNA and DNA chains in the entry. The first graphic for a chain summarises the proportions of errors displayed in the second graphic. The second graphic shows the sequence view annotated by issues in geometry and electron density. Residues are color-coded according to the number of geometric quality criteria for which they contain at least one outlier: green = 0, yellow = 1, orange = 2 and red = 3 or more. A red dot above a residue indicates a poor fit to the electron density ( $RSRZ > 2$ ). Stretches of 2 or more consecutive residues without any outlier are shown as a green connector. Residues present in the sample, but not in the model, are shown in grey.

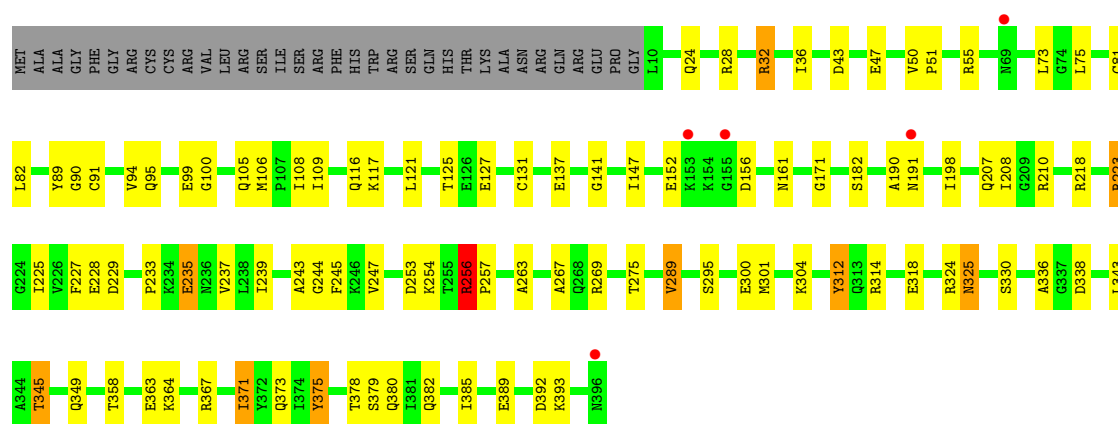
- Molecule 1: Acyl-CoA dehydrogenase, medium-chain specific, mitochondrial precursor

Chain A:



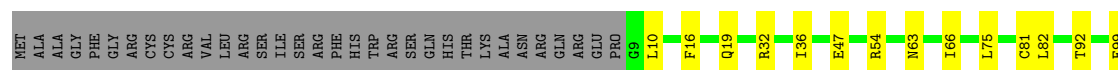
- Molecule 1: Acyl-CoA dehydrogenase, medium-chain specific, mitochondrial precursor

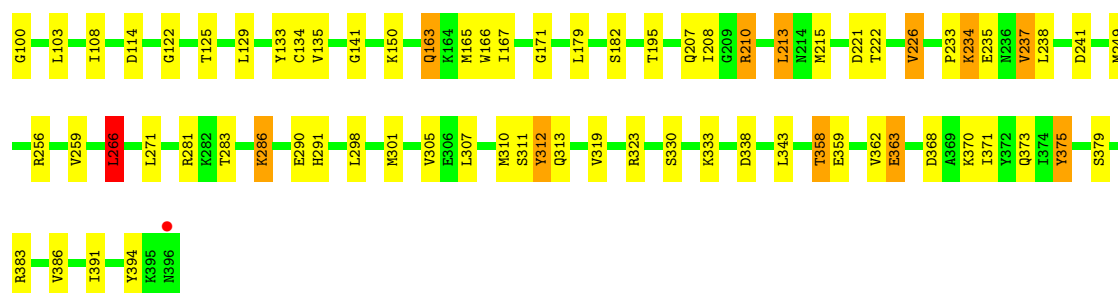
Chain B:



- Molecule 1: Acyl-CoA dehydrogenase, medium-chain specific, mitochondrial precursor

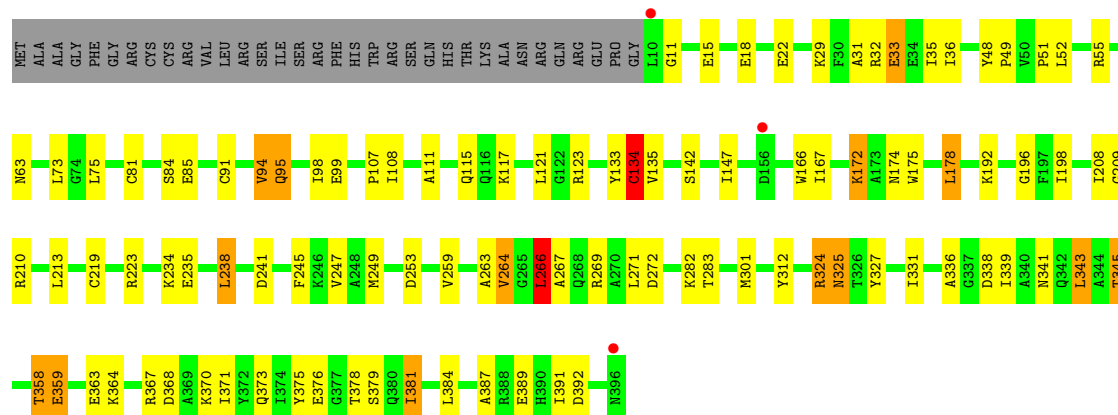
Chain C:





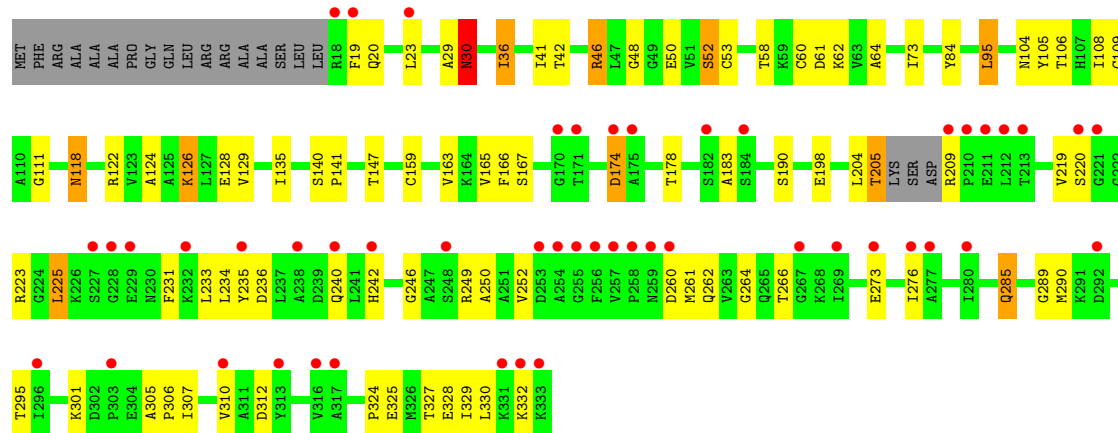
- Molecule 1: Acyl-CoA dehydrogenase, medium-chain specific, mitochondrial precursor

Chain D:



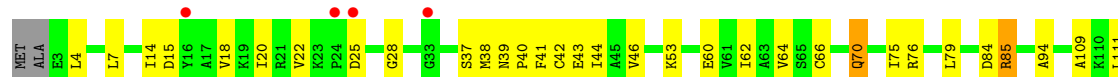
- Molecule 2: Electron transfer flavoprotein alpha-subunit, mitochondrial precursor

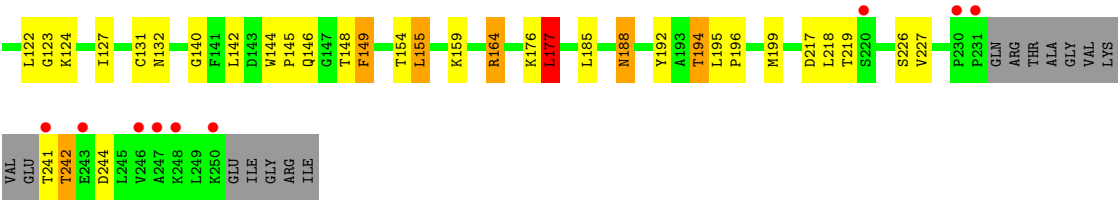
Chain R:



- Molecule 3: Electron transfer flavoprotein beta-subunit

Chain S:







## 4 Data and refinement statistics

Property	Value	Source
Space group	P 21 21 21	Depositor
Cell constants a, b, c, $\alpha$ , $\beta$ , $\gamma$	94.18Å 100.66Å 244.38Å 90.00° 90.00° 90.00°	Depositor
Resolution (Å)	19.98 – 2.80 19.98 – 2.80	Depositor EDS
% Data completeness (in resolution range)	100.0 (19.98-2.80) 93.0 (19.98-2.80)	Depositor EDS
$R_{merge}$	0.10	Depositor
$R_{sym}$	(Not available)	Depositor
$\langle I/\sigma(I) \rangle$ <sup>1</sup>	1.74 (at 2.79Å)	Xtriage
Refinement program	REFMAC 5.2.0011	Depositor
R, $R_{free}$	0.199 , 0.269 0.205 , 0.200	Depositor DCC
$R_{free}$ test set	2734 reflections (5.35%)	DCC
Wilson B-factor (Å <sup>2</sup> )	46.7	Xtriage
Anisotropy	0.310	Xtriage
Bulk solvent $k_{sol}$ (e/Å <sup>3</sup> ), $B_{sol}$ (Å <sup>2</sup> )	0.35 , 23.0	EDS
Estimated twinning fraction	No twinning to report.	Xtriage
L-test for twinning	$\langle  L  \rangle = 0.47$ , $\langle L^2 \rangle = 0.30$	Xtriage
Outliers	0 of 53814 reflections	Xtriage
$F_o, F_c$ correlation	0.93	EDS
Total number of atoms	16189	wwPDB-VP
Average B, all atoms (Å <sup>2</sup> )	44.0	wwPDB-VP

Xtriage's analysis on translational NCS is as follows: *The largest off-origin peak in the Patterson function is 3.14% of the height of the origin peak. No significant pseudotranslation is detected.*

<sup>1</sup>Intensities estimated from amplitudes.

## 5 Model quality

### 5.1 Standard geometry

Bond lengths and bond angles in the following residue types are not validated in this section: AMP, FAD

The Z score for a bond length (or angle) is the number of standard deviations the observed value is removed from the expected value. A bond length (or angle) with  $|Z| > 5$  is considered an outlier worth inspection. RMSZ is the root-mean-square of all Z scores of the bond lengths (or angles).

Mol	Chain	Bond lengths		Bond angles	
		RMSZ	# $ Z  > 5$	RMSZ	# $ Z  > 5$
1	A	0.74	1/2988 (0.0%)	0.83	6/4040 (0.1%)
1	B	0.76	0/3004	0.80	1/4062 (0.0%)
1	C	0.73	0/3016	0.83	3/4074 (0.1%)
1	D	0.72	1/3027 (0.0%)	0.81	1/4085 (0.0%)
2	R	0.63	0/2298	0.73	1/3129 (0.0%)
3	S	0.68	2/1778 (0.1%)	0.77	1/2417 (0.0%)
All	All	0.72	4/16111 (0.0%)	0.80	13/21807 (0.1%)

Chiral center outliers are detected by calculating the chiral volume of a chiral center and verifying if the center is modelled as a planar moiety or with the opposite hand. A planarity outlier is detected by checking planarity of atoms in a peptide group, atoms in a mainchain group or atoms of a sidechain that are expected to be planar.

Mol	Chain	#Chirality outliers	#Planarity outliers
1	B	0	1
3	S	0	2
All	All	0	3

All (4) bond length outliers are listed below:

Mol	Chain	Res	Type	Atoms	Z	Observed(Å)	Ideal(Å)
3	S	66	CYS	CB-SG	-5.89	1.72	1.81
3	S	131	CYS	CB-SG	-5.59	1.72	1.81
1	D	134	CYS	CB-SG	-5.39	1.73	1.81
1	A	41	GLU	CG-CD	5.04	1.59	1.51

The worst 5 of 13 bond angle outliers are listed below:

Mol	Chain	Res	Type	Atoms	Z	Observed(°)	Ideal(°)
1	A	269	ARG	NE-CZ-NH1	7.56	124.08	120.30

*Continued on next page...*

*Continued from previous page...*

Mol	Chain	Res	Type	Atoms	Z	Observed(°)	Ideal(°)
1	C	383	ARG	NE-CZ-NH1	6.71	123.65	120.30
1	A	388	ARG	NE-CZ-NH2	-6.49	117.06	120.30
1	A	388	ARG	NE-CZ-NH1	6.38	123.49	120.30
1	B	256	ARG	NE-CZ-NH1	6.36	123.48	120.30

There are no chirality outliers.

All (3) planarity outliers are listed below:

Mol	Chain	Res	Type	Group
1	B	325	ASN	Peptide
3	S	176	LYS	Peptide
3	S	177	LEU	Peptide

## 5.2 Close contacts ⓘ

In the following table, the Non-H and H(model) columns list the number of non-hydrogen atoms and hydrogen atoms in the chain respectively. The H(added) column lists the number of hydrogens added by MolProbity. The Clashes column lists the number of clashes within the asymmetric unit, and the number in parentheses is this value normalized per 1000 atoms of the molecule in the chain. The Symm-Clashes column gives symmetry related clashes, in the same way as for the Clashes column.

Mol	Chain	Non-H	H(model)	H(added)	Clashes	Symm-Clashes
1	A	2933	0	2855	57	0
1	B	2949	0	2862	60	0
1	C	2961	0	2903	50	0
1	D	2972	0	2916	63	0
2	R	2264	0	2268	50	0
3	S	1758	0	1795	42	0
4	S	23	0	12	1	0
5	A	53	0	31	7	0
5	B	53	0	31	3	0
5	C	53	0	31	5	0
5	D	53	0	31	4	0
5	R	53	0	31	4	0
6	A	13	0	0	3	0
6	B	9	0	0	0	0
6	C	17	0	0	2	0
6	D	12	0	0	3	0
6	R	3	0	0	1	0
6	S	10	0	0	0	0

*Continued on next page...*

*Continued from previous page...*

Mol	Chain	Non-H	H(model)	H(added)	Clashes	Symm-Clashes
All	All	16189	0	15766	298	0

Clashscore is defined as the number of clashes calculated for the entry per 1000 atoms (including hydrogens) of the entry. The overall clashscore for this entry is 9.

The worst 5 of 298 close contacts within the same asymmetric unit are listed below.

Atom-1	Atom-2	Distance(Å)	Clash(Å)
1:B:378:THR:HG21	5:B:1399:FAD:O2B	1.51	1.07
2:R:84:TYR:OH	2:R:95:LEU:HD23	1.71	0.91
1:A:341:ASN:HD21	1:A:370:LYS:HA	1.40	0.85
1:B:116:GLN:NE2	1:B:237:VAL:O	2.09	0.84
6:D:3411:HOH:O	2:R:266:THR:HG21	1.78	0.84

There are no symmetry-related clashes.

## 5.3 Torsion angles

### 5.3.1 Protein backbone ⓘ

In the following table, the Percentiles column shows the percent Ramachandran outliers of the chain as a percentile score with respect to all X-ray entries followed by that with respect to entries of similar resolution. The Analysed column shows the number of residues for which the backbone conformation was analysed, and the total number of residues.

Mol	Chain	Analysed	Favoured	Allowed	Outliers	Percentiles	
1	A	384/421 (91%)	361 (94%)	22 (6%)	1 (0%)	50	84
1	B	385/421 (91%)	368 (96%)	15 (4%)	2 (0%)	38	76
1	C	386/421 (92%)	372 (96%)	12 (3%)	2 (0%)	38	76
1	D	385/421 (91%)	365 (95%)	20 (5%)	0	100	100
2	R	309/333 (93%)	270 (87%)	31 (10%)	8 (3%)	8	26
3	S	235/255 (92%)	205 (87%)	25 (11%)	5 (2%)	11	33
All	All	2084/2272 (92%)	1941 (93%)	125 (6%)	18 (1%)	25	63

5 of 18 Ramachandran outliers are listed below:

Mol	Chain	Res	Type
1	A	69	ASN
1	C	234	LYS

*Continued on next page...*

*Continued from previous page...*

Mol	Chain	Res	Type
3	S	218	LEU
2	R	30	ASN
2	R	50	GLU

### 5.3.2 Protein sidechains ⓘ

In the following table, the Percentiles column shows the percent sidechain outliers of the chain as a percentile score with respect to all X-ray entries followed by that with respect to entries of similar resolution. The Analysed column shows the number of residues for which the sidechain conformation was analysed, and the total number of residues.

Mol	Chain	Analysed	Rotameric	Outliers	Percentiles	
1	A	287/332 (86%)	259 (90%)	28 (10%)	12	32
1	B	288/332 (87%)	260 (90%)	28 (10%)	12	32
1	C	293/332 (88%)	257 (88%)	36 (12%)	7	20
1	D	296/332 (89%)	263 (89%)	33 (11%)	9	25
2	R	232/262 (88%)	204 (88%)	28 (12%)	7	21
3	S	183/213 (86%)	163 (89%)	20 (11%)	9	26
All	All	1579/1803 (88%)	1406 (89%)	173 (11%)	9	26

5 of 173 residues with a non-rotameric sidechain are listed below:

Mol	Chain	Res	Type
1	C	249	MET
1	D	94	VAL
3	S	111	LEU
1	C	259	VAL
1	C	358	THR

Some sidechains can be flipped to improve hydrogen bonding and reduce clashes. 5 of 41 such sidechains are listed below:

Mol	Chain	Res	Type
1	C	313	GLN
1	D	19	GLN
3	S	70	GLN
1	C	349	GLN
1	C	373	GLN

### 5.3.3 RNA ⓘ

There are no RNA chains in this entry.

## 5.4 Non-standard residues in protein, DNA, RNA chains ⓘ

There are no non-standard protein/DNA/RNA residues in this entry.

## 5.5 Carbohydrates ⓘ

There are no carbohydrates in this entry.

## 5.6 Ligand geometry ⓘ

6 ligands are modelled in this entry.

In the following table, the Counts columns list the number of bonds (or angles) for which Mogul statistics could be retrieved, the number of bonds (or angles) that are observed in the model and the number of bonds (or angles) that are defined in the chemical component dictionary. The Link column lists molecule types, if any, to which the group is linked. The Z score for a bond length (or angle) is the number of standard deviations the observed value is removed from the expected value. A bond length (or angle) with  $|Z| > 2$  is considered an outlier worth inspection. RMSZ is the root-mean-square of all Z scores of the bond lengths (or angles).

Mol	Type	Chain	Res	Link	Bond lengths			Bond angles		
					Counts	RMSZ	# Z  > 2	Counts	RMSZ	# Z  > 2
5	FAD	A	399	-	58,58,58	1.13	5 (8%)	85,89,89	1.99	17 (20%)
5	FAD	B	1399	-	58,58,58	1.09	5 (8%)	85,89,89	2.00	17 (20%)
5	FAD	C	2399	-	58,58,58	1.21	4 (6%)	85,89,89	1.68	12 (14%)
5	FAD	D	3399	-	58,58,58	1.14	4 (6%)	85,89,89	1.81	14 (16%)
5	FAD	R	599	-	58,58,58	1.00	4 (6%)	85,89,89	2.04	17 (20%)
4	AMP	S	600	-	25,25,25	1.16	2 (8%)	38,38,38	1.89	10 (26%)

In the following table, the Chirals column lists the number of chiral outliers, the number of chiral centers analysed, the number of these observed in the model and the number defined in the chemical component dictionary. Similar counts are reported in the Torsion and Rings columns. '-' means no outliers of that kind were identified.

Mol	Type	Chain	Res	Link	Chirals	Torsions	Rings
5	FAD	A	399	-	-	0/34/50/50	0/1/6/6
5	FAD	B	1399	-	-	0/34/50/50	0/1/6/6
5	FAD	C	2399	-	-	0/34/50/50	0/1/6/6

*Continued on next page...*

*Continued from previous page...*

Mol	Type	Chain	Res	Link	Chirals	Torsions	Rings
5	FAD	D	3399	-	-	0/34/50/50	0/1/6/6
5	FAD	R	599	-	-	0/34/50/50	0/1/6/6
4	AMP	S	600	-	-	0/10/26/26	0/1/3/3

The worst 5 of 24 bond length outliers are listed below:

Mol	Chain	Res	Type	Atoms	Z	Observed(Å)	Ideal(Å)
5	A	399	FAD	C1'-C2'	4.09	1.55	1.51
4	S	600	AMP	C4-N9	-3.58	1.32	1.37
5	D	3399	FAD	C1'-C2'	3.49	1.54	1.51
5	C	2399	FAD	C1'-N10	3.35	1.52	1.48
5	R	599	FAD	C2A-N3A	3.31	1.38	1.32

The worst 5 of 87 bond angle outliers are listed below:

Mol	Chain	Res	Type	Atoms	Z	Observed(°)	Ideal(°)
5	R	599	FAD	N3A-C2A-N1A	-11.89	118.77	128.71
5	A	399	FAD	N3A-C2A-N1A	-11.21	119.34	128.71
5	B	1399	FAD	N3A-C2A-N1A	-10.54	119.90	128.71
5	D	3399	FAD	N3A-C2A-N1A	-10.35	120.06	128.71
5	C	2399	FAD	N3A-C2A-N1A	-9.44	120.81	128.71

There are no chirality outliers.

There are no torsion outliers.

There are no ring outliers.

## 5.7 Other polymers ⓘ

There are no such residues in this entry.

## 5.8 Polymer linkage issues

There are no chain breaks in this entry.

## 6 Fit of model and data ⓘ

### 6.1 Protein, DNA and RNA chains ⓘ

In the following table, the column labelled ‘#RSRZ> 2’ contains the number (and percentage) of RSRZ outliers, followed by percent RSRZ outliers for the chain as percentile scores relative to all X-ray entries and entries of similar resolution. The OWAB column contains the minimum, median, 95<sup>th</sup> percentile and maximum values of the occupancy-weighted average B-factor per residue. The column labelled ‘Q< 0.9’ lists the number of (and percentage) of residues with an average occupancy less than 0.9.

Mol	Chain	Analysed	<RSRZ>	#RSRZ>2	OWAB(Å <sup>2</sup> )	Q<0.9
1	A	386/421 (91%)	-0.51	1 (0%) 91 93	26, 37, 49, 57	0
1	B	387/421 (91%)	-0.42	5 (1%) 74 75	26, 40, 53, 62	0
1	C	388/421 (92%)	-0.54	1 (0%) 91 93	24, 37, 49, 60	0
1	D	387/421 (91%)	-0.50	3 (0%) 83 83	24, 37, 51, 60	0
2	R	313/333 (93%)	0.67	49 (15%) 3 2	43, 63, 91, 104	0
3	S	239/255 (93%)	0.10	13 (5%) 25 25	36, 53, 77, 111	0
All	All	2100/2272 (92%)	-0.25	72 (3%) 43 44	24, 41, 82, 111	0

The worst 5 of 72 RSRZ outliers are listed below:

Mol	Chain	Res	Type	RSRZ
2	R	333	LYS	7.0
2	R	213	THR	5.8
2	R	220	SER	5.2
2	R	242	HIS	5.2
2	R	209	ARG	4.8

### 6.2 Non-standard residues in protein, DNA, RNA chains ⓘ

There are no non-standard protein/DNA/RNA residues in this entry.

### 6.3 Carbohydrates ⓘ

There are no carbohydrates in this entry.



## 6.4 Ligands

In the following table, the Atoms column lists the number of modelled atoms in the group and the number defined in the chemical component dictionary. LLDF column lists the quality of electron density of the group with respect to its neighbouring residues in protein, DNA or RNA chains. The B-factors column lists the minimum, median, 95<sup>th</sup> percentile and maximum values of B factors of atoms in the group. The column labelled 'Q < 0.9' lists the number of atoms with occupancy less than 0.9.

Mol	Type	Chain	Res	Atoms	RSR	LLDF	B-factors(Å <sup>2</sup> )	Q<0.9
5	FAD	B	1399	53/53	0.14	-0.26	29,35,41,42	0
5	FAD	C	2399	53/53	0.12	-0.42	29,33,36,37	0
5	FAD	D	3399	53/53	0.12	-0.69	28,32,37,37	0
5	FAD	R	599	53/53	0.17	-0.71	61,65,71,71	0
5	FAD	A	399	53/53	0.12	-0.99	27,33,35,36	0
4	AMP	S	600	23/23	0.12	-1.27	41,45,46,46	0

## 6.5 Other polymers

There are no such residues in this entry.