



Full wwPDB X-ray Structure Validation Report ⓘ

Feb 27, 2014 – 03:47 PM GMT

PDB ID : 2A1Y
Title : Crystal Structure of GuaC-GMP complex from Bacillus anthracis at 2.26 Å Resolution.
Authors : Grenha, R.; Levnikov, V.M.; Blagova, E.V.; Fogg, M.J.; Brannigan, J.A.; Wilkinson, A.J.; Wilson, K.S.; Structural Proteomics in Europe (SPINE)
Deposited on : 2005-06-21
Resolution : 2.27 Å(reported)

This is a full wwPDB validation report for a publicly released PDB entry.
We welcome your comments at validation@mail.wwpdb.org
A user guide is available at <http://wwpdb.org/ValidationPDFNotes.html>

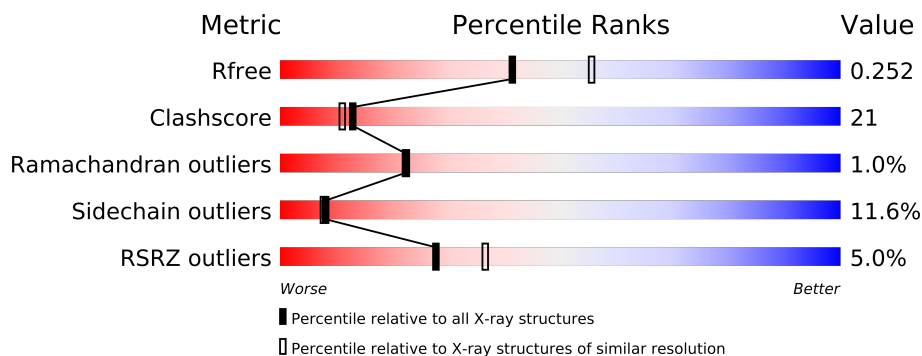
The following versions of software and data (see [references](#)) were used in the production of this report:

MolProbity : 4.02b-467
Mogul : 1.15 2013
Xtriage (Phenix) : dev-1323
EDS : stable22639
Percentile statistics : 21963
Refmac : 5.8.0049
CCP4 : 6.3.0 (Settle)
Ideal geometry (proteins) : Engh & Huber (2001)
Ideal geometry (DNA, RNA) : Parkinson et. al. (1996)
Validation Pipeline (wwPDB-VP) : stable22683

1 Overall quality at a glance

The reported resolution of this entry is 2.27 Å.

Percentile scores (ranging between 0-100) for global validation metrics of the entry are shown in the following graphic. The table shows the number of entries on which the scores are based.



Metric	Whole archive (#Entries)	Similar resolution (#Entries, resolution range(Å))
R_{free}	66092	3861 (2.30-2.26)
Clashscore	79885	4801 (2.30-2.26)
Ramachandran outliers	78287	4729 (2.30-2.26)
Sidechain outliers	78261	4728 (2.30-2.26)
RSRZ outliers	66119	3864 (2.30-2.26)

The table below summarises the geometric issues observed across the polymeric chains and their fit to the electron density. The red, orange, yellow and green segments on the lower bar indicate the fraction of residues that contain outliers for ≥ 3 , 2, 1 and 0 types of geometric quality criteria. The upper red bar (where present) indicates the fraction of residues that have poor fit to the electron density.

Mol	Chain	Length	Quality of chain
1	A	336	

2 Entry composition

There are 3 unique types of molecules in this entry. The entry contains 2545 atoms, of which 0 are hydrogen and 0 are deuterium.

In the tables below, the ZeroOcc column contains the number of atoms modelled with zero occupancy, the AltConf column contains the number of residues with at least one atom in alternate conformation and the Trace column contains the number of residues modelled with at most 2 atoms.

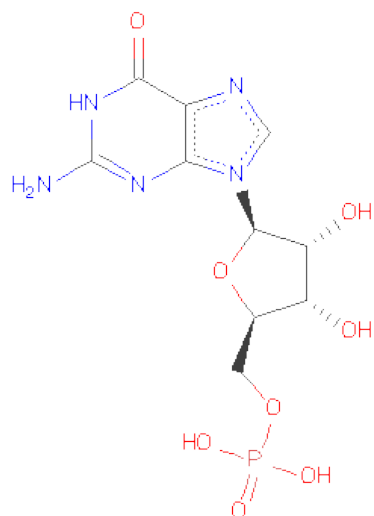
- Molecule 1 is a protein called GMP reductase.

Mol	Chain	Residues	Atoms					ZeroOcc	AltConf	Trace
			Total	C	N	O	S			
1	A	301	2347	1491	396	448	12	0	2	0

There are 9 discrepancies between the modelled and reference sequences:

Chain	Residue	Modelled	Actual	Comment	Reference
A	-8	GLY	-	CLONING ARTIFACT	UNP Q81JJ9
A	-7	SER	-	CLONING ARTIFACT	UNP Q81JJ9
A	-6	SER	-	CLONING ARTIFACT	UNP Q81JJ9
A	-5	HIS	-	EXPRESSION TAG	UNP Q81JJ9
A	-4	HIS	-	EXPRESSION TAG	UNP Q81JJ9
A	-3	HIS	-	EXPRESSION TAG	UNP Q81JJ9
A	-2	HIS	-	EXPRESSION TAG	UNP Q81JJ9
A	-1	HIS	-	EXPRESSION TAG	UNP Q81JJ9
A	0	HIS	-	EXPRESSION TAG	UNP Q81JJ9

- Molecule 2 is GUANOSINE-5'-MONOPHOSPHATE (three-letter code: 5GP) (formula: C₁₀H₁₄N₅O₈P).



Mol	Chain	Residues	Atoms					ZeroOcc	AltConf
			Total	C	N	O	P		
2	A	1	24	10	5	8	1	0	0

- Molecule 3 is water.

Mol	Chain	Residues	Atoms		ZeroOcc	AltConf
3	A	174	Total	O	0	0
			174	174		

4 Data and refinement statistics

Property	Value	Source
Space group	I 4	Depositor
Cell constants a, b, c, α , β , γ	95.61Å 95.61Å 67.67Å 90.00° 90.00° 90.00°	Depositor
Resolution (Å)	30.26 – 2.27 30.26 – 2.27	Depositor EDS
% Data completeness (in resolution range)	97.5 (30.26-2.27) 97.5 (30.26-2.27)	Depositor EDS
R_{merge}	0.06	Depositor
R_{sym}	(Not available)	Depositor
$\langle I/\sigma(I) \rangle$ ¹	1.38 (at 2.26Å)	Xtriage
Refinement program	REFMAC 5.2.0005	Depositor
R, R_{free}	0.167 , 0.246 0.190 , 0.252	Depositor DCC
R_{free} test set	696 reflections (5.28%)	DCC
Wilson B-factor (Å ²)	42.2	Xtriage
Anisotropy	0.042	Xtriage
Bulk solvent k_{sol} (e/Å ³), B_{sol} (Å ²)	0.32 , 44.6	EDS
Estimated twinning fraction	0.037 for -k,-h,-l	Xtriage
L-test for twinning	$\langle L \rangle = 0.49$, $\langle L^2 \rangle = 0.32$	Xtriage
Outliers	0 of 13875 reflections	Xtriage
F_o, F_c correlation	0.96	EDS
Total number of atoms	2545	wwPDB-VP
Average B, all atoms (Å ²)	47.0	wwPDB-VP

Xtriage's analysis on translational NCS is as follows: *The largest off-origin peak in the Patterson function is 6.47% of the height of the origin peak. No significant pseudotranslation is detected.*

¹Intensities estimated from amplitudes.

5 Model quality

5.1 Standard geometry

Bond lengths and bond angles in the following residue types are not validated in this section: 5GP

The Z score for a bond length (or angle) is the number of standard deviations the observed value is removed from the expected value. A bond length (or angle) with $|Z| > 5$ is considered an outlier worth inspection. RMSZ is the root-mean-square of all Z scores of the bond lengths (or angles).

Mol	Chain	Bond lengths		Bond angles	
		RMSZ	$\# Z > 5$	RMSZ	$\# Z > 5$
1	A	1.18	4/2393 (0.2%)	1.00	4/3229 (0.1%)

Chiral center outliers are detected by calculating the chiral volume of a chiral center and verifying if the center is modelled as a planar moiety or with the opposite hand. A planarity outlier is detected by checking planarity of atoms in a peptide group, atoms in a mainchain group or atoms of a sidechain that are expected to be planar.

Mol	Chain	#Chirality outliers	#Planarity outliers
1	A	0	5

All (4) bond length outliers are listed below:

Mol	Chain	Res	Type	Atoms	Z	Observed(Å)	Ideal(Å)
1	A	17	CYS	CB-SG	-6.45	1.71	1.82
1	A	8	GLU	CG-CD	5.40	1.60	1.51
1	A	173	LYS	CE-NZ	5.30	1.62	1.49
1	A	178	LYS	CD-CE	5.08	1.64	1.51

All (4) bond angle outliers are listed below:

Mol	Chain	Res	Type	Atoms	Z	Observed(°)	Ideal(°)
1	A	211	ARG	NE-CZ-NH2	-5.71	117.44	120.30
1	A	319	SER	CB-CA-C	5.37	120.30	110.10
1	A	286	LEU	CA-CB-CG	5.12	127.08	115.30
1	A	68	ARG	CB-CA-C	-5.05	100.30	110.40

There are no chirality outliers.

All (5) planarity outliers are listed below:

Mol	Chain	Res	Type	Group
1	A	244	ILE	Peptide
1	A	249	LYS	Peptide
1	A	275	PHE	Peptide
1	A	318	ASN	Peptide
1	A	319	SER	Peptide

5.2 Close contacts ⓘ

In the following table, the Non-H and H(model) columns list the number of non-hydrogen atoms and hydrogen atoms in the chain respectively. The H(added) column lists the number of hydrogens added by MolProbity. The Clashes column lists the number of clashes within the asymmetric unit, and the number in parentheses is this value normalized per 1000 atoms of the molecule in the chain. The Symm-Clashes column gives symmetry related clashes, in the same way as for the Clashes column.

Mol	Chain	Non-H	H(model)	H(added)	Clashes	Symm-Clashes
1	A	2347	0	2342	98	0
2	A	24	0	12	3	0
3	A	174	0	0	22	0
All	All	2545	0	2354	98	0

Clashscore is defined as the number of clashes calculated for the entry per 1000 atoms (including hydrogens) of the entry. The overall clashscore for this entry is 21.

All (98) close contacts within the same asymmetric unit are listed below.

Atom-1	Atom-2	Distance(Å)	Clash(Å)
1:A:132:GLN:HG2	3:A:1461:HOH:O	1.39	1.21
1:A:312:ASP:HB2	3:A:1485:HOH:O	1.44	1.14
1:A:244:ILE:HD11	1:A:275:PHE:CE1	1.86	1.11
1:A:159:ASN:HB3	3:A:1459:HOH:O	1.58	1.04
1:A:236:HIS:HE1	1:A:285:THR:OG1	1.38	1.03
1:A:249:LYS:N	1:A:249:LYS:HE3	1.78	0.99
1:A:194:ARG:HD3	3:A:1486:HOH:O	1.61	0.97
1:A:70:GLN:HG3	3:A:1489:HOH:O	1.68	0.94
1:A:43:ALA:HB3	1:A:45:MET:CE	2.01	0.91
1:A:244:ILE:CD1	1:A:275:PHE:CE1	2.58	0.87
1:A:244:ILE:CD1	1:A:275:PHE:HE1	1.85	0.87
1:A:43:ALA:HB3	1:A:45:MET:HE2	1.55	0.87
1:A:236:HIS:CE1	1:A:285:THR:OG1	2.29	0.82
1:A:43:ALA:CB	1:A:45:MET:HE1	2.09	0.82
1:A:202:LYS:HE3	3:A:1493:HOH:O	1.80	0.81
1:A:43:ALA:CB	1:A:45:MET:CE	2.60	0.79

Continued on next page...

Continued from previous page...

Atom-1	Atom-2	Distance(Å)	Clash(Å)
1:A:121:HIS:HD2	3:A:1354:HOH:O	1.66	0.78
1:A:276:VAL:HG12	1:A:277:GLU:N	2.01	0.76
1:A:276:VAL:CG1	1:A:277:GLU:N	2.53	0.72
1:A:244:ILE:HD11	1:A:275:PHE:HE1	1.35	0.71
1:A:136:LYS:HG2	3:A:1458:HOH:O	1.92	0.69
1:A:187:GLY:HA2	3:A:1518:HOH:O	1.94	0.68
1:A:104:GLN:HG3	3:A:1481:HOH:O	1.94	0.68
1:A:245:GLU:HB2	1:A:249:LYS:O	1.97	0.64
1:A:234:ALA:O	1:A:279:LYS:HE2	1.97	0.64
1:A:229:ILE:CG2	1:A:232:LEU:HB2	2.28	0.64
1:A:22:ARG:HG3	1:A:23:SER:N	2.12	0.64
1:A:175:CYS:SG	2:A:1344:5GP:N2	2.72	0.63
1:A:136:LYS:CG	3:A:1458:HOH:O	2.47	0.62
1:A:43:ALA:HB3	1:A:45:MET:HE1	1.75	0.61
1:A:45:MET:SD	2:A:1344:5GP:H8	2.41	0.61
1:A:45:MET:CE	1:A:48:ILE:HG13	2.30	0.60
1:A:48:ILE:HD11	1:A:254:TYR:CE1	2.37	0.60
1:A:98:GLU:O	1:A:102:VAL:HG13	2.02	0.59
1:A:237[B]:GLU:HG2	1:A:278:HIS:HE1	1.68	0.59
1:A:26:ASP:HA	3:A:1371:HOH:O	2.03	0.59
1:A:150:THR:OG1	1:A:152[A]:GLU:HG2	2.02	0.58
1:A:79:ARG:HG3	1:A:110:LEU:HD11	1.84	0.58
1:A:43:ALA:CB	1:A:45:MET:HE2	2.31	0.58
1:A:159:ASN:CB	3:A:1459:HOH:O	2.30	0.57
1:A:142:PHE:CE1	1:A:163:ASP:HB3	2.40	0.57
1:A:251:TYR:HD2	1:A:276:VAL:O	1.87	0.57
1:A:244:ILE:HD12	1:A:275:PHE:HE1	1.68	0.56
1:A:175:CYS:SG	2:A:1344:5GP:C2	2.93	0.56
1:A:102:VAL:HG21	1:A:133:HIS:CD2	2.39	0.56
1:A:22:ARG:HG3	1:A:23:SER:H	1.69	0.56
1:A:45:MET:HE3	1:A:48:ILE:HG13	1.88	0.56
1:A:95:LYS:HA	1:A:96:GLU:HG3	1.87	0.56
1:A:111:THR:HB	3:A:1517:HOH:O	2.05	0.55
1:A:45:MET:HE3	1:A:48:ILE:CG1	2.37	0.54
1:A:3:ASN:HD22	1:A:3:ASN:N	2.05	0.53
1:A:176:ILE:HG23	1:A:180:LYS:HG2	1.91	0.53
1:A:275:PHE:O	1:A:276:VAL:HG23	2.09	0.53
1:A:102:VAL:CG2	1:A:133:HIS:CD2	2.92	0.52
1:A:98:GLU:HA	1:A:101:PHE:HB3	1.92	0.52
1:A:198:LYS:HD2	3:A:1380:HOH:O	2.11	0.51
1:A:118:ASP:HB3	3:A:1424:HOH:O	2.10	0.51
1:A:276:VAL:CG1	1:A:277:GLU:H	2.23	0.51

Continued on next page...

Continued from previous page...

Atom-1	Atom-2	Distance(Å)	Clash(Å)
1:A:185:THR:HA	1:A:188:TRP:NE1	2.26	0.51
1:A:229:ILE:HG21	1:A:232:LEU:HB2	1.93	0.50
1:A:29:VAL:HG22	1:A:30:THR:H	1.76	0.50
1:A:205:ILE:HG12	1:A:226:MET:HB3	1.92	0.50
1:A:55:THR:HG22	1:A:59:GLU:OE1	2.12	0.50
1:A:194:ARG:HG2	3:A:1486:HOH:O	2.12	0.49
1:A:68:ARG:HD2	3:A:1387:HOH:O	2.12	0.49
1:A:45:MET:HE3	1:A:254:TYR:HE1	1.77	0.49
1:A:68:ARG:HG3	1:A:91:SER:HB2	1.95	0.49
1:A:45:MET:CE	1:A:48:ILE:CG1	2.91	0.49
1:A:97:ASP:O	1:A:100:GLU:HG2	2.13	0.48
1:A:321:PHE:C	3:A:1494:HOH:O	2.52	0.48
1:A:102:VAL:HG22	1:A:133:HIS:HE2	1.79	0.48
1:A:34:HIS:HB2	1:A:114:TYR:OH	2.13	0.48
1:A:110:LEU:HD23	1:A:110:LEU:HA	1.65	0.48
1:A:102:VAL:HG22	1:A:133:HIS:NE2	2.29	0.47
1:A:317:LYS:NZ	3:A:1441:HOH:O	2.46	0.47
1:A:249:LYS:NZ	1:A:250:LEU:H	2.13	0.47
1:A:77:PHE:CE1	1:A:81:MET:HE2	2.50	0.47
1:A:50:ASP:C	1:A:50:ASP:OD1	2.54	0.46
1:A:77:PHE:CZ	1:A:81:MET:HG3	2.51	0.46
1:A:18:ILE:HD11	1:A:303:THR:HG23	1.97	0.45
1:A:94:VAL:HG11	1:A:126:ALA:HB1	1.99	0.44
1:A:64:TYR:CD1	1:A:64:TYR:C	2.91	0.44
1:A:243:THR:OG1	1:A:252:LYS:HE3	2.19	0.43
1:A:304:LYS:CE	3:A:1457:HOH:O	2.67	0.43
1:A:148:VAL:CG1	1:A:153:ALA:HB1	2.49	0.43
1:A:13:ILE:HA	1:A:14:PRO:HD3	1.73	0.42
1:A:285:THR:O	1:A:289:MET:HG3	2.19	0.42
1:A:148:VAL:HB	1:A:153:ALA:HB3	2.02	0.42
1:A:3:ASN:HD22	1:A:3:ASN:H	1.68	0.42
1:A:10:ILE:HD12	1:A:10:ILE:HG23	1.92	0.41
1:A:176:ILE:HG12	1:A:179:ILE:HD12	2.01	0.41
1:A:46:GLN:HG3	1:A:46:GLN:H	1.56	0.41
1:A:193:LEU:O	1:A:194:ARG:C	2.59	0.41
1:A:51:GLU:HG3	1:A:77:PHE:CD1	2.56	0.41
1:A:100:GLU:HA	1:A:103:GLN:HB2	2.02	0.41
1:A:251:TYR:CD2	1:A:276:VAL:O	2.71	0.41
1:A:4:VAL:HG23	1:A:188:TRP:HB2	2.02	0.41
1:A:70:GLN:CG	3:A:1489:HOH:O	2.47	0.40

There are no symmetry-related clashes.

5.3 Torsion angles

5.3.1 Protein backbone ⓘ

In the following table, the Percentiles column shows the percent Ramachandran outliers of the chain as a percentile score with respect to all X-ray entries followed by that with respect to entries of similar resolution. The Analysed column shows the number of residues for which the backbone conformation was analysed, and the total number of residues.

Mol	Chain	Analysed	Favoured	Allowed	Outliers	Percentiles	
1	A	297/336 (88%)	284 (96%)	10 (3%)	3 (1%)	22	22

All (3) Ramachandran outliers are listed below:

Mol	Chain	Res	Type
1	A	320	ILE
1	A	23	SER
1	A	94	VAL

5.3.2 Protein sidechains ⓘ

In the following table, the Percentiles column shows the percent sidechain outliers of the chain as a percentile score with respect to all X-ray entries followed by that with respect to entries of similar resolution. The Analysed column shows the number of residues for which the sidechain conformation was analysed, and the total number of residues.

Mol	Chain	Analysed	Rotameric	Outliers	Percentiles	
1	A	253/280 (90%)	224 (88%)	29 (12%)	8	8

All (29) residues with a non-rotameric sidechain are listed below:

Mol	Chain	Res	Type
1	A	1	MET
1	A	3	ASN
1	A	4	VAL
1	A	22	ARG
1	A	30	THR
1	A	46	GLN
1	A	52	ARG
1	A	70	GLN
1	A	72	GLU
1	A	75	ILE
1	A	84	ARG

Continued on next page...

Continued from previous page...

Mol	Chain	Res	Type
1	A	102	VAL
1	A	108	GLU
1	A	140	GLU
1	A	173	LYS
1	A	176	ILE
1	A	189	GLN
1	A	194	ARG
1	A	195	TRP
1	A	198	LYS
1	A	202	LYS
1	A	242	GLU
1	A	244	ILE
1	A	245	GLU
1	A	249	LYS
1	A	275	PHE
1	A	277	GLU
1	A	304	LYS
1	A	320	ILE

Some sidechains can be flipped to improve hydrogen bonding and reduce clashes. All (9) such sidechains are listed below:

Mol	Chain	Res	Type
1	A	3	ASN
1	A	46	GLN
1	A	61	ASN
1	A	82	GLN
1	A	121	HIS
1	A	189	GLN
1	A	236	HIS
1	A	278	HIS
1	A	318	ASN

5.3.3 RNA ⓘ

There are no RNA chains in this entry.

5.4 Non-standard residues in protein, DNA, RNA chains ⓘ

There are no non-standard protein/DNA/RNA residues in this entry.

5.5 Carbohydrates ⓘ

There are no carbohydrates in this entry.

5.6 Ligand geometry ⓘ

1 ligand is modelled in this entry.

In the following table, the Counts columns list the number of bonds (or angles) for which Mogul statistics could be retrieved, the number of bonds (or angles) that are observed in the model and the number of bonds (or angles) that are defined in the chemical component dictionary. The Link column lists molecule types, if any, to which the group is linked. The Z score for a bond length (or angle) is the number of standard deviations the observed value is removed from the expected value. A bond length (or angle) with $|Z| > 2$ is considered an outlier worth inspection. RMSZ is the root-mean-square of all Z scores of the bond lengths (or angles).

Mol	Type	Chain	Res	Link	Bond lengths			Bond angles		
					Counts	RMSZ	$\# Z > 2$	Counts	RMSZ	$\# Z > 2$
2	5GP	A	1344	-	26,26,26	1.19	3 (11%)	37,40,40	2.51	12 (32%)

In the following table, the Chirals column lists the number of chiral outliers, the number of chiral centers analysed, the number of these observed in the model and the number defined in the chemical component dictionary. Similar counts are reported in the Torsion and Rings columns. '-' means no outliers of that kind were identified.

Mol	Type	Chain	Res	Link	Chirals	Torsions	Rings
2	5GP	A	1344	-	1/1/5/5	0/10/26/26	0/1/3/3

All (3) bond length outliers are listed below:

Mol	Chain	Res	Type	Atoms	Z	Observed(Å)	Ideal(Å)
2	A	1344	5GP	C2-N2	2.49	1.36	1.32
2	A	1344	5GP	C4-N9	-2.46	1.34	1.37
2	A	1344	5GP	C2-N3	2.31	1.36	1.33

All (12) bond angle outliers are listed below:

Mol	Chain	Res	Type	Atoms	Z	Observed(°)	Ideal(°)
2	A	1344	5GP	O4'-C1'-N9	6.10	114.12	108.44
2	A	1344	5GP	C6-C5-N7	-5.51	133.40	134.14
2	A	1344	5GP	C4'-O4'-C1'	4.98	115.15	109.75
2	A	1344	5GP	C5-C4-N3	-4.55	119.35	125.94
2	A	1344	5GP	O4'-C1'-C2'	-3.91	100.78	106.77
2	A	1344	5GP	N3-C4-N9	3.82	132.51	126.91

Continued on next page...

Continued from previous page...

Mol	Chain	Res	Type	Atoms	Z	Observed(°)	Ideal(°)
2	A	1344	5GP	P-O5'-C5'	3.62	128.67	118.19
2	A	1344	5GP	C2-N3-C4	3.50	120.01	115.09
2	A	1344	5GP	C3'-C2'-C1'	3.10	105.77	100.91
2	A	1344	5GP	C4-C5-N7	-3.10	106.87	109.52
2	A	1344	5GP	N2-C2-N1	2.92	121.07	117.86
2	A	1344	5GP	O4'-C4'-C5'	2.05	116.66	109.36

All (1) chirality outliers are listed below:

Mol	Chain	Res	Type	Atom
2	A	1344	5GP	C4'

There are no torsion outliers.

There are no ring outliers.

5.7 Other polymers ⓘ

There are no such residues in this entry.

5.8 Polymer linkage issues

There are no chain breaks in this entry.

6 Fit of model and data ⓘ

6.1 Protein, DNA and RNA chains ⓘ

In the following table, the column labelled ‘#RSRZ> 2’ contains the number (and percentage) of RSRZ outliers, followed by percent RSRZ outliers for the chain as percentile scores relative to all X-ray entries and entries of similar resolution. The OWAB column contains the minimum, median, 95th percentile and maximum values of the occupancy-weighted average B-factor per residue. The column labelled ‘Q< 0.9’ lists the number of (and percentage) of residues with an average occupancy less than 0.9.

Mol	Chain	Analysed	<RSRZ>	#RSRZ>2		OWAB(Å ²)	Q<0.9
1	A	301/336 (89%)	0.16	15 (4%)	28 36	20, 44, 70, 86	0

All (15) RSRZ outliers are listed below:

Mol	Chain	Res	Type	RSRZ
1	A	95	LYS	5.1
1	A	97	ASP	4.8
1	A	83	SER	4.1
1	A	256	GLY	3.3
1	A	96	GLU	3.2
1	A	254	TYR	3.1
1	A	244	ILE	3.0
1	A	3	ASN	2.6
1	A	275	PHE	2.5
1	A	255	PHE	2.3
1	A	204	ILE	2.2
1	A	227	VAL	2.2
1	A	249	LYS	2.1
1	A	205	ILE	2.0
1	A	251	TYR	2.0

6.2 Non-standard residues in protein, DNA, RNA chains ⓘ

There are no non-standard protein/DNA/RNA residues in this entry.

6.3 Carbohydrates ⓘ

There are no carbohydrates in this entry.

6.4 Ligands

In the following table, the Atoms column lists the number of modelled atoms in the group and the number defined in the chemical component dictionary. LLDF column lists the quality of electron density of the group with respect to its neighbouring residues in protein, DNA or RNA chains. The B-factors column lists the minimum, median, 95th percentile and maximum values of B factors of atoms in the group. The column labelled 'Q< 0.9' lists the number of atoms with occupancy less than 0.9.

Mol	Type	Chain	Res	Atoms	RSR	LLDF	B-factors(Å ²)	Q<0.9
2	5GP	A	1344	24/24	0.16	-0.03	29,47,49,50	19

6.5 Other polymers

There are no such residues in this entry.