



wwPDB X-ray Structure Validation Summary Report

Feb 27, 2014 – 08:11 AM GMT

PDB ID : 2A2D
Title : X-ray structure of human n-acetyl galactosamine kinase complexed with Mn-AMPPNP and n-acetyl galactosamine
Authors : Thoden, J.B.; Holden, H.M.
Deposited on : 2005-06-22
Resolution : 2.20 Å(reported)

This is a wwPDB validation summary report for a publicly released PDB entry.

We welcome your comments at validation@mail.wwpdb.org

A user guide is available at <http://wwpdb.org/ValidationPDFNotes.html>

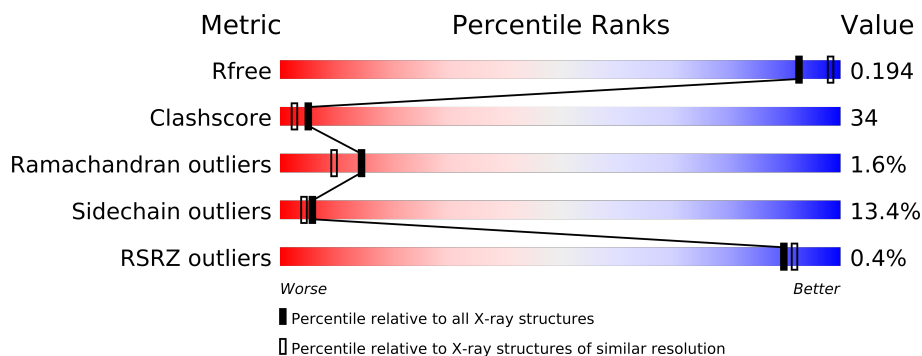
The following versions of software and data (see [references](#)) were used in the production of this report:

MolProbity	:	4.02b-467
Mogul	:	1.15 2013
Xtriage (Phenix)	:	dev-1323
EDS	:	stable22639
Percentile statistics	:	21963
Refmac	:	5.8.0049
CCP4	:	6.3.0 (Settle)
Ideal geometry (proteins)	:	Engh & Huber (2001)
Ideal geometry (DNA, RNA)	:	Parkinson et. al. (1996)
Validation Pipeline (wwPDB-VP)	:	stable22683

1 Overall quality at a glance

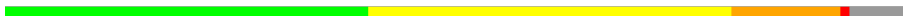
The reported resolution of this entry is 2.20 Å.

Percentile scores (ranging between 0-100) for global validation metrics of the entry are shown in the following graphic. The table shows the number of entries on which the scores are based.



Metric	Whole archive (#Entries)	Similar resolution (#Entries, resolution range(Å))
R_{free}	66092	2938 (2.20-2.20)
Clashscore	79885	3751 (2.20-2.20)
Ramachandran outliers	78287	3681 (2.20-2.20)
Sidechain outliers	78261	3682 (2.20-2.20)
RSRZ outliers	66119	2939 (2.20-2.20)

The table below summarises the geometric issues observed across the polymeric chains and their fit to the electron density. The red, orange, yellow and green segments on the lower bar indicate the fraction of residues that contain outliers for ≥ 3 , 2, 1 and 0 types of geometric quality criteria. The upper red bar (where present) indicates the fraction of residues that have poor fit to the electron density.

Mol	Chain	Length	Quality of chain
1	A	478	

2 Entry composition

There are 5 unique types of molecules in this entry. The entry contains 3765 atoms, of which 0 are hydrogen and 0 are deuterium.

In the tables below, the ZeroOcc column contains the number of atoms modelled with zero occupancy, the AltConf column contains the number of residues with at least one atom in alternate conformation and the Trace column contains the number of residues modelled with at most 2 atoms.

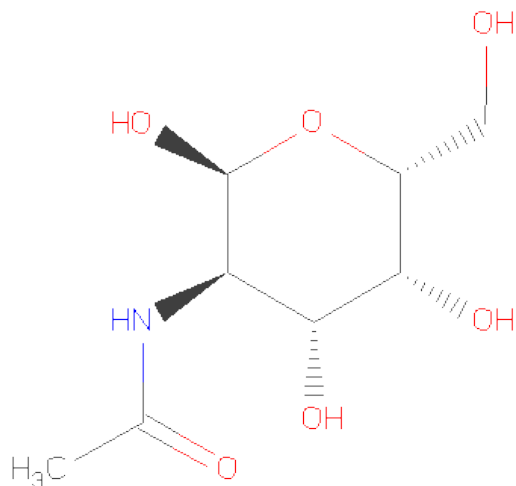
- Molecule 1 is a protein called N-acetylgalactosaminekinase.

Mol	Chain	Residues	Atoms					ZeroOcc	AltConf	Trace
			Total	C	N	O	S			
1	A	448	3462	2198	587	649	28	0	3	0

There are 20 discrepancies between the modelled and reference sequences:

Chain	Residue	Modelled	Actual	Comment	Reference
A	-19	MET	-	CLONING ARTIFACT	UNP Q01415
A	-18	GLY	-	CLONING ARTIFACT	UNP Q01415
A	-17	SER	-	CLONING ARTIFACT	UNP Q01415
A	-16	SER	-	CLONING ARTIFACT	UNP Q01415
A	-15	HIS	-	EXPRESSION TAG	UNP Q01415
A	-14	HIS	-	EXPRESSION TAG	UNP Q01415
A	-13	HIS	-	EXPRESSION TAG	UNP Q01415
A	-12	HIS	-	EXPRESSION TAG	UNP Q01415
A	-11	HIS	-	EXPRESSION TAG	UNP Q01415
A	-10	HIS	-	EXPRESSION TAG	UNP Q01415
A	-9	SER	-	CLONING ARTIFACT	UNP Q01415
A	-8	SER	-	CLONING ARTIFACT	UNP Q01415
A	-7	GLU	-	CLONING ARTIFACT	UNP Q01415
A	-6	ASN	-	CLONING ARTIFACT	UNP Q01415
A	-5	LEU	-	CLONING ARTIFACT	UNP Q01415
A	-4	TYR	-	CLONING ARTIFACT	UNP Q01415
A	-3	PHE	-	CLONING ARTIFACT	UNP Q01415
A	-2	GLN	-	CLONING ARTIFACT	UNP Q01415
A	-1	GLY	-	CLONING ARTIFACT	UNP Q01415
A	0	HIS	-	CLONING ARTIFACT	UNP Q01415

- Molecule 2 is SUGAR (N-ACETYL-D-GALACTOSAMINE) (three-letter code: A2G) (formula: C₈H₁₅NO₆).

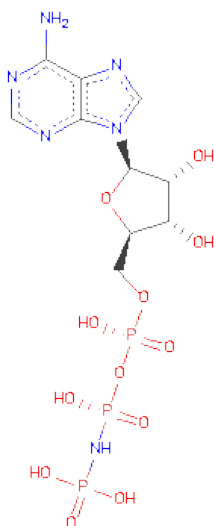


Mol	Chain	Residues	Atoms				ZeroOcc	AltConf
2	A	1	Total	C	N	O	0	0
			15	8	1	6		

- Molecule 3 is MANGANESE (II) ION (three-letter code: MN) (formula: Mn).

Mol	Chain	Residues	Atoms		ZeroOcc	AltConf
3	A	1	Total	Mn	0	0
			1	1		

- Molecule 4 is PHOSPHOAMINOPHOSPHONICACID-ADENYLATE ESTER (three-letter code: ANP) (formula: C₁₀H₁₇N₆O₁₂P₃).



Mol	Chain	Residues	Atoms					ZeroOcc	AltConf
4	A	1	Total	C	N	O	P	0	0
			31	10	6	12	3		

- Molecule 5 is water.

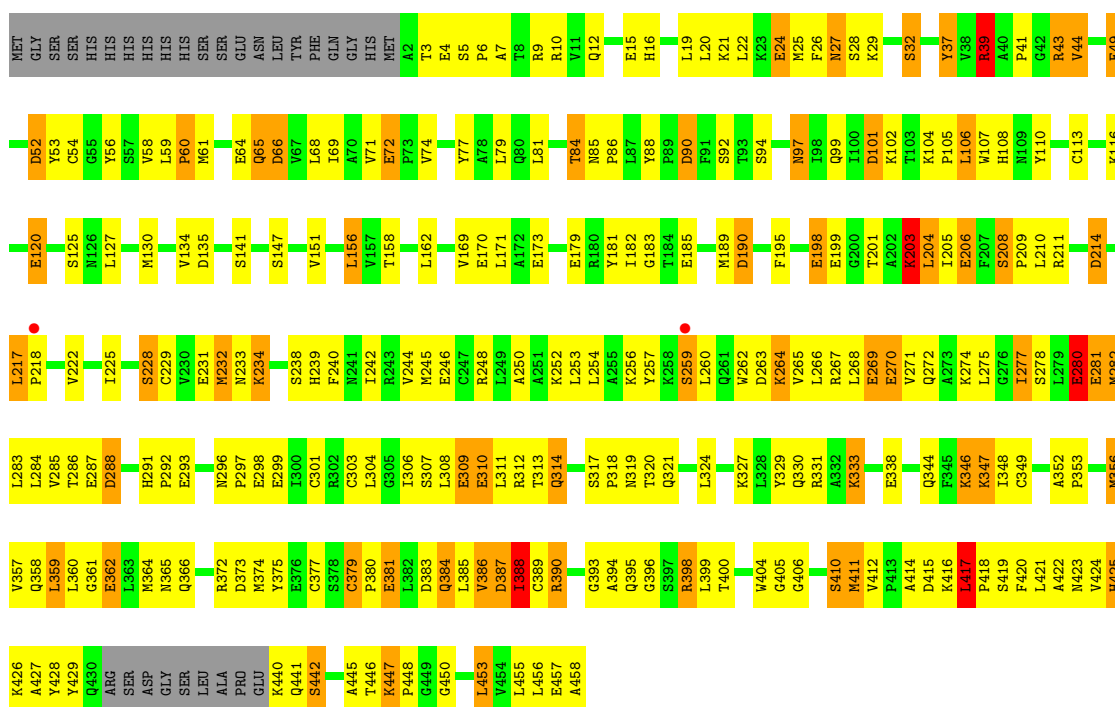
Mol	Chain	Residues	Atoms		ZeroOcc	AltConf
5	A	256	Total	O	0	0
			256	256		

3 Residue-property plots

These plots are drawn for all protein, RNA and DNA chains in the entry. The first graphic for a chain summarises the proportions of errors displayed in the second graphic. The second graphic shows the sequence view annotated by issues in geometry and electron density. Residues are color-coded according to the number of geometric quality criteria for which they contain at least one outlier: green = 0, yellow = 1, orange = 2 and red = 3 or more. A red dot above a residue indicates a poor fit to the electron density ($RSRZ > 2$). Stretches of 2 or more consecutive residues without any outlier are shown as a green connector. Residues present in the sample, but not in the model, are shown in grey.

- Molecule 1: N-acetylgalactosaminekinase

Chain A:



4 Data and refinement statistics

Property	Value	Source
Space group	P 65	Depositor
Cell constants a, b, c, α , β , γ	119.10Å 119.10Å 65.90Å 90.00° 90.00° 120.00°	Depositor
Resolution (Å)	30.00 – 2.20 29.78 – 2.20	Depositor EDS
% Data completeness (in resolution range)	98.9 (30.00-2.20) 98.9 (29.78-2.20)	Depositor EDS
R_{merge}	(Not available)	Depositor
R_{sym}	0.08	Depositor
$\langle I/\sigma(I) \rangle$ ¹	2.02 (at 2.20Å)	Xtriage
Refinement program	TNT	Depositor
R, R_{free}	0.203 , 0.247 0.199 , 0.194	Depositor DCC
R_{free} test set	2691 reflections (10.01%)	DCC
Wilson B-factor (Å ²)	2.6	Xtriage
Anisotropy	0.914	Xtriage
Bulk solvent k_{sol} (e/Å ³), B_{sol} (Å ²)	0.33 , 122.9	EDS
Estimated twinning fraction	0.236 for h,-h-k,-l	Xtriage
L-test for twinning	$\langle L \rangle = 0.29$, $\langle L^2 \rangle = 0.12$	Xtriage
Outliers	0 of 26904 reflections	Xtriage
F_o, F_c correlation	0.86	EDS
Total number of atoms	3765	wwPDB-VP
Average B, all atoms (Å ²)	33.0	wwPDB-VP

Xtriage's analysis on translational NCS is as follows: *The largest off-origin peak in the Patterson function is 2.65% of the height of the origin peak. No significant pseudotranslation is detected.*

¹Intensities estimated from amplitudes.

5 Model quality ⓘ

5.1 Standard geometry ⓘ

Bond lengths and bond angles in the following residue types are not validated in this section: MN, ANP, A2G

The Z score for a bond length (or angle) is the number of standard deviations the observed value is removed from the expected value. A bond length (or angle) with $|Z| > 5$ is considered an outlier worth inspection. RMSZ is the root-mean-square of all Z scores of the bond lengths (or angles).

Mol	Chain	Bond lengths		Bond angles	
		RMSZ	$\# Z > 5$	RMSZ	$\# Z > 5$
1	A	1.01	27/3538 (0.8%)	1.43	34/4786 (0.7%)

The worst 5 of 27 bond length outliers are listed below:

Mol	Chain	Res	Type	Atoms	Z	Observed(Å)	Ideal(Å)
1	A	338	GLU	CD-OE2	7.20	1.33	1.25
1	A	309	GLU	CD-OE2	6.99	1.33	1.25
1	A	185	GLU	CD-OE2	6.63	1.32	1.25
1	A	24	GLU	CD-OE2	6.57	1.32	1.25
1	A	280	GLU	CD-OE2	6.28	1.32	1.25

The worst 5 of 34 bond angle outliers are listed below:

Mol	Chain	Res	Type	Atoms	Z	Observed(°)	Ideal(°)
1	A	387	ASP	CB-CG-OD1	8.85	126.27	118.30
1	A	390	ARG	NE-CZ-NH2	-8.71	115.95	120.30
1	A	415	ASP	CB-CA-C	-8.71	92.98	110.40
1	A	415	ASP	CB-CG-OD2	-8.26	110.86	118.30
1	A	329	TYR	CB-CG-CD2	7.79	125.67	121.00

There are no chirality outliers.

There are no planarity outliers.

5.2 Close contacts ⓘ

In the following table, the Non-H and H(model) columns list the number of non-hydrogen atoms and hydrogen atoms in the chain respectively. The H(added) column lists the number of hydrogens added by MolProbity. The Clashes column lists the number of clashes within the asymmetric unit, and the number in parentheses is this value normalized per 1000 atoms of the molecule in the

chain. The Symm-Clashes column gives symmetry related clashes, in the same way as for the Clashes column.

Mol	Chain	Non-H	H(model)	H(added)	Clashes	Symm-Clashes
1	A	3462	0	3503	236	0
2	A	15	0	14	0	0
3	A	1	0	0	0	0
4	A	31	0	13	9	0
5	A	256	0	0	13	0
All	All	3765	0	3530	236	0

Clashscore is defined as the number of clashes calculated for the entry per 1000 atoms (including hydrogens) of the entry. The overall clashscore for this entry is 34.

The worst 5 of 236 close contacts within the same asymmetric unit are listed below.

Atom-1	Atom-2	Distance(Å)	Clash(Å)
1:A:357:VAL:HG12	1:A:395:GLN:HG2	1.25	1.14
1:A:390:ARG:HA	1:A:394:ALA:HB3	1.32	1.09
1:A:447:LYS:HG3	1:A:448:PRO:HD2	1.40	1.02
1:A:65:GLN:H	1:A:65:GLN:HE21	1.12	0.97
1:A:218:PRO:HG2	1:A:411:MET:CE	1.96	0.94

There are no symmetry-related clashes.

5.3 Torsion angles

5.3.1 Protein backbone ⓘ

In the following table, the Percentiles column shows the percent Ramachandran outliers of the chain as a percentile score with respect to all X-ray entries followed by that with respect to entries of similar resolution. The Analysed column shows the number of residues for which the backbone conformation was analysed, and the total number of residues.

Mol	Chain	Analysed	Favoured	Allowed	Outliers	Percentiles
1	A	447/478 (94%)	399 (89%)	41 (9%)	7 (2%)	14 9

5 of 7 Ramachandran outliers are listed below:

Mol	Chain	Res	Type
1	A	359	LEU
1	A	346	LYS
1	A	60	PRO
1	A	347	LYS

Continued on next page...

Continued from previous page...

Mol	Chain	Res	Type
1	A	105	PRO

5.3.2 Protein sidechains ⓘ

In the following table, the Percentiles column shows the percent sidechain outliers of the chain as a percentile score with respect to all X-ray entries followed by that with respect to entries of similar resolution. The Analysed column shows the number of residues for which the sidechain conformation was analysed, and the total number of residues.

Mol	Chain	Analysed	Rotameric	Outliers	Percentiles
1	A	383/407 (94%)	332 (87%)	51 (13%)	6 4

5 of 51 residues with a non-rotameric sidechain are listed below:

Mol	Chain	Res	Type
1	A	228	SER
1	A	260	LEU
1	A	417	LEU
1	A	234	LYS
1	A	264	LYS

Some sidechains can be flipped to improve hydrogen bonding and reduce clashes. 5 of 9 such sidechains are listed below:

Mol	Chain	Res	Type
1	A	233	ASN
1	A	425	HIS
1	A	395	GLN
1	A	65	GLN
1	A	366	GLN

5.3.3 RNA ⓘ

There are no RNA chains in this entry.

5.4 Non-standard residues in protein, DNA, RNA chains ⓘ

There are no non-standard protein/DNA/RNA residues in this entry.

5.5 Carbohydrates ⓘ

There are no carbohydrates in this entry.

5.6 Ligand geometry ⓘ

Of 3 ligands modelled in this entry, 1 is monoatomic - leaving 2 for Mogul analysis.

In the following table, the Counts columns list the number of bonds (or angles) for which Mogul statistics could be retrieved, the number of bonds (or angles) that are observed in the model and the number of bonds (or angles) that are defined in the chemical component dictionary. The Link column lists molecule types, if any, to which the group is linked. The Z score for a bond length (or angle) is the number of standard deviations the observed value is removed from the expected value. A bond length (or angle) with $|Z| > 2$ is considered an outlier worth inspection. RMSZ is the root-mean-square of all Z scores of the bond lengths (or angles).

Mol	Type	Chain	Res	Link	Bond lengths			Bond angles		
					Counts	RMSZ	$\# Z > 2$	Counts	RMSZ	$\# Z > 2$
2	A2G	A	459	-	15,15,15	1.00	1 (6%)	21,21,21	2.82	6 (28%)
4	ANP	A	461	3	33,33,33	1.51	5 (15%)	51,52,52	1.99	11 (21%)

In the following table, the Chirals column lists the number of chiral outliers, the number of chiral centers analysed, the number of these observed in the model and the number defined in the chemical component dictionary. Similar counts are reported in the Torsion and Rings columns. '-' means no outliers of that kind were identified.

Mol	Type	Chain	Res	Link	Chirals	Torsions	Rings
2	A2G	A	459	-	-	0/6/26/26	0/1/1/1
4	ANP	A	461	3	-	0/18/38/38	0/1/3/3

The worst 5 of 6 bond length outliers are listed below:

Mol	Chain	Res	Type	Atoms	Z	Observed(Å)	Ideal(Å)
4	A	461	ANP	PG-N3B	4.24	1.68	1.64
4	A	461	ANP	PB-O1B	3.15	1.50	1.46
4	A	461	ANP	C6-N6	-2.93	1.25	1.35
4	A	461	ANP	PG-O1G	2.86	1.49	1.46
2	A	459	A2G	C1-C2	2.73	1.56	1.53

The worst 5 of 17 bond angle outliers are listed below:

Mol	Chain	Res	Type	Atoms	Z	Observed(°)	Ideal(°)
2	A	459	A2G	O-C1-C2	8.24	117.96	109.61
2	A	459	A2G	O-C5-C4	5.91	120.70	109.76

Continued on next page...

Continued from previous page...

Mol	Chain	Res	Type	Atoms	Z	Observed(°)	Ideal(°)
4	A	461	ANP	N3-C2-N1	-5.56	124.06	128.71
2	A	459	A2G	C1-C2-C3	5.47	118.42	110.59
4	A	461	ANP	PB-N3B-PG	5.41	139.18	130.07

There are no chirality outliers.

There are no torsion outliers.

There are no ring outliers.

5.7 Other polymers ⓘ

There are no such residues in this entry.

5.8 Polymer linkage issues

There are no chain breaks in this entry.

6 Fit of model and data ⓘ

6.1 Protein, DNA and RNA chains ⓘ

In the following table, the column labelled ‘#RSRZ> 2’ contains the number (and percentage) of RSRZ outliers, followed by percent RSRZ outliers for the chain as percentile scores relative to all X-ray entries and entries of similar resolution. The OWAB column contains the minimum, median, 95th percentile and maximum values of the occupancy-weighted average B-factor per residue. The column labelled ‘Q< 0.9’ lists the number of (and percentage) of residues with an average occupancy less than 0.9.

Mol	Chain	Analysed	<RSRZ>	#RSRZ>2	OWAB(Å ²)	Q<0.9
1	A	448/478 (93%)	-0.48	2 (0%) 90 92	8, 26, 70, 94	0

All (2) RSRZ outliers are listed below:

Mol	Chain	Res	Type	RSRZ
1	A	259	SER	2.1
1	A	218	PRO	2.1

6.2 Non-standard residues in protein, DNA, RNA chains ⓘ

There are no non-standard protein/DNA/RNA residues in this entry.

6.3 Carbohydrates ⓘ

There are no carbohydrates in this entry.

6.4 Ligands ⓘ

In the following table, the Atoms column lists the number of modelled atoms in the group and the number defined in the chemical component dictionary. LLDF column lists the quality of electron density of the group with respect to its neighbouring residues in protein, DNA or RNA chains. The B-factors column lists the minimum, median, 95th percentile and maximum values of B factors of atoms in the group. The column labelled ‘Q< 0.9’ lists the number of atoms with occupancy less than 0.9.

Mol	Type	Chain	Res	Atoms	RSR	LLDF	B-factors(Å ²)	Q<0.9
2	A2G	A	459	15/15	0.10	0.11	3,13,22,29	0
4	ANP	A	461	31/31	0.09	-0.41	6,26,43,67	0
3	MN	A	460	1/1	0.05	-1.68	27,27,27,27	0

6.5 Other polymers ⓘ

There are no such residues in this entry.