



# wwPDB X-ray Structure Validation Summary Report

Nov 13, 2014 – 08:12 PM EST

PDB ID : 4A2L  
Title : Structure of the periplasmic domain of the heparin and heparan sulphate sensing hybrid two component system BT4663 in apo and ligand bound forms  
Authors : Lowe, E.C.; Basle, A.; Czjzek, M.; Firbank, S.J.; Bolam, D.N.  
Deposited on : 2011-09-27  
Resolution : 2.60 Å(reported)

This is a wwPDB validation summary report for a publicly released PDB entry.

We welcome your comments at [validation@mail.wwpdb.org](mailto:validation@mail.wwpdb.org)

A user guide is available at <http://wwpdb.org/ValidationPDFNotes.html>

---

The following versions of software and data (see [references](#)) were used in the production of this report:

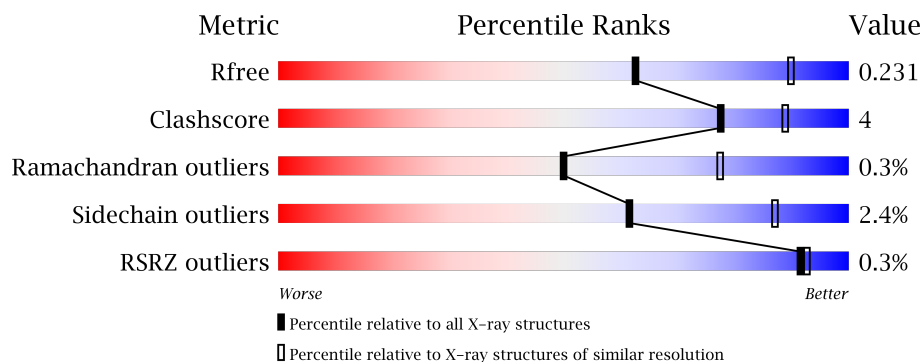
MolProbity : 4.02b-467  
Mogul : 1.16 November 2013  
Xtriage (Phenix) : dev-1439  
EDS : stable24195  
Percentile statistics : 21963  
Refmac : 5.8.0049  
CCP4 : 6.1.3  
Ideal geometry (proteins) : Engh & Huber (2001)  
Ideal geometry (DNA, RNA) : Parkinson et. al. (1996)  
Validation Pipeline (wwPDB-VP) : stable24195



# 1 Overall quality at a glance

The reported resolution of this entry is 2.60 Å.

Percentile scores (ranging between 0-100) for global validation metrics of the entry are shown in the following graphic. The table shows the number of entries on which the scores are based.



Metric	Whole archive (#Entries)	Similar resolution (#Entries, resolution range(Å))
$R_{free}$	66092	1718 (2.60-2.60)
Clashscore	79885	2154 (2.60-2.60)
Ramachandran outliers	78287	2113 (2.60-2.60)
Sidechain outliers	78261	2113 (2.60-2.60)
RSRZ outliers	66119	1718 (2.60-2.60)

The table below summarises the geometric issues observed across the polymeric chains and their fit to the electron density. The red, orange, yellow and green segments on the lower bar indicate the fraction of residues that contain outliers for  $\geq 3$ , 2, 1 and 0 types of geometric quality criteria. The upper red bar (where present) indicates the fraction of residues that have poor fit to the electron density.

Mol	Chain	Length	Quality of chain
1	A	795	
1	B	795	
1	C	795	
1	D	795	
1	E	795	
1	F	795	

The following table lists non-polymeric compounds that are outliers for geometric or electron-density-fit criteria:

Mol	Type	Chain	Res	Geometry	Electron density
2	PGE	A	1785	-	X
2	PGE	A	1786	-	X

*Continued on next page...*



*Continued from previous page...*

Mol	Type	Chain	Res	Geometry	Electron density
2	PGE	E	1785	-	X
3	EDO	A	1787	-	X
3	EDO	B	1787	-	X
4	PEG	A	1788	-	X
4	PEG	B	1784	-	X
4	PEG	C	1785	-	X
4	PEG	C	1787	-	X
4	PEG	D	1784	-	X
4	PEG	D	1785	-	X
4	PEG	D	1786	-	X
4	PEG	E	1784	-	X
4	PEG	F	1785	-	X
6	MES	B	1789	-	X
6	MES	E	1787	-	X
7	OAA	C	1788	-	X
7	OAA	C	1789	-	X
7	OAA	E	1786	-	X
8	2PE	D	1788	-	X



## 2 Entry composition

There are 9 unique types of molecules in this entry. The entry contains 35839 atoms, of which 0 are hydrogen and 0 are deuterium.

In the tables below, the ZeroOcc column contains the number of atoms modelled with zero occupancy, the AltConf column contains the number of residues with at least one atom in alternate conformation and the Trace column contains the number of residues modelled with at most 2 atoms.

- Molecule 1 is a protein called TWO-COMPONENT SYSTEM SENSOR HISTIDINE KINASE/RESPONSE.

Mol	Chain	Residues	Atoms					ZeroOcc	AltConf	Trace
1	A	747	Total	C	N	O	S	0	0	0
			5869	3734	980	1143	12			
1	B	744	Total	C	N	O	S	0	0	0
			5873	3739	977	1145	12			
1	C	749	Total	C	N	O	S	0	0	0
			5910	3757	988	1153	12			
1	D	745	Total	C	N	O	S	0	0	0
			5880	3739	977	1152	12			
1	E	744	Total	C	N	O	S	0	0	0
			5893	3748	980	1153	12			
1	F	749	Total	C	N	O	S	0	0	0
			5889	3745	983	1149	12			

There are 48 discrepancies between the modelled and reference sequences:

Chain	Residue	Modelled	Actual	Comment	Reference
A	788	LEU	-	EXPRESSION TAG	UNP Q89YR8
A	789	GLU	-	EXPRESSION TAG	UNP Q89YR8
A	790	HIS	-	EXPRESSION TAG	UNP Q89YR8
A	791	HIS	-	EXPRESSION TAG	UNP Q89YR8
A	792	HIS	-	EXPRESSION TAG	UNP Q89YR8
A	793	HIS	-	EXPRESSION TAG	UNP Q89YR8
A	794	HIS	-	EXPRESSION TAG	UNP Q89YR8
A	795	HIS	-	EXPRESSION TAG	UNP Q89YR8
B	788	LEU	-	EXPRESSION TAG	UNP Q89YR8
B	789	GLU	-	EXPRESSION TAG	UNP Q89YR8
B	790	HIS	-	EXPRESSION TAG	UNP Q89YR8
B	791	HIS	-	EXPRESSION TAG	UNP Q89YR8
B	792	HIS	-	EXPRESSION TAG	UNP Q89YR8
B	793	HIS	-	EXPRESSION TAG	UNP Q89YR8
B	794	HIS	-	EXPRESSION TAG	UNP Q89YR8
B	795	HIS	-	EXPRESSION TAG	UNP Q89YR8

*Continued on next page...*

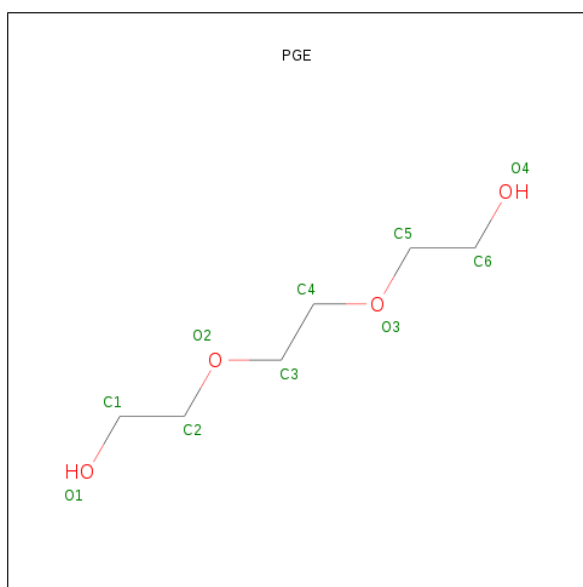


*Continued from previous page...*

Chain	Residue	Modelled	Actual	Comment	Reference
C	788	LEU	-	EXPRESSION TAG	UNP Q89YR8
C	789	GLU	-	EXPRESSION TAG	UNP Q89YR8
C	790	HIS	-	EXPRESSION TAG	UNP Q89YR8
C	791	HIS	-	EXPRESSION TAG	UNP Q89YR8
C	792	HIS	-	EXPRESSION TAG	UNP Q89YR8
C	793	HIS	-	EXPRESSION TAG	UNP Q89YR8
C	794	HIS	-	EXPRESSION TAG	UNP Q89YR8
C	795	HIS	-	EXPRESSION TAG	UNP Q89YR8
D	788	LEU	-	EXPRESSION TAG	UNP Q89YR8
D	789	GLU	-	EXPRESSION TAG	UNP Q89YR8
D	790	HIS	-	EXPRESSION TAG	UNP Q89YR8
D	791	HIS	-	EXPRESSION TAG	UNP Q89YR8
D	792	HIS	-	EXPRESSION TAG	UNP Q89YR8
D	793	HIS	-	EXPRESSION TAG	UNP Q89YR8
D	794	HIS	-	EXPRESSION TAG	UNP Q89YR8
D	795	HIS	-	EXPRESSION TAG	UNP Q89YR8
E	788	LEU	-	EXPRESSION TAG	UNP Q89YR8
E	789	GLU	-	EXPRESSION TAG	UNP Q89YR8
E	790	HIS	-	EXPRESSION TAG	UNP Q89YR8
E	791	HIS	-	EXPRESSION TAG	UNP Q89YR8
E	792	HIS	-	EXPRESSION TAG	UNP Q89YR8
E	793	HIS	-	EXPRESSION TAG	UNP Q89YR8
E	794	HIS	-	EXPRESSION TAG	UNP Q89YR8
E	795	HIS	-	EXPRESSION TAG	UNP Q89YR8
F	788	LEU	-	EXPRESSION TAG	UNP Q89YR8
F	789	GLU	-	EXPRESSION TAG	UNP Q89YR8
F	790	HIS	-	EXPRESSION TAG	UNP Q89YR8
F	791	HIS	-	EXPRESSION TAG	UNP Q89YR8
F	792	HIS	-	EXPRESSION TAG	UNP Q89YR8
F	793	HIS	-	EXPRESSION TAG	UNP Q89YR8
F	794	HIS	-	EXPRESSION TAG	UNP Q89YR8
F	795	HIS	-	EXPRESSION TAG	UNP Q89YR8

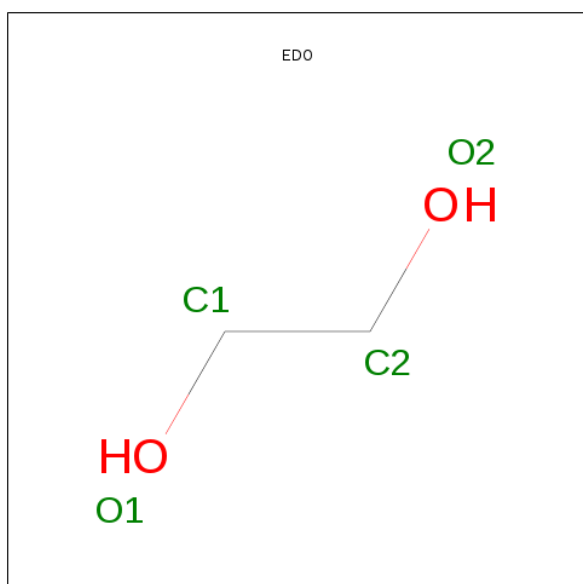
- Molecule 2 is TRIETHYLENE GLYCOL (three-letter code: PGE) (formula: C<sub>6</sub>H<sub>14</sub>O<sub>4</sub>).





Mol	Chain	Residues	Atoms			ZeroOcc	AltConf
2	A	1	Total	C	O	0	0
			10	6	4		
2	A	1	Total	C	O	0	0
			10	6	4		
2	B	1	Total	C	O	0	0
			10	6	4		
2	E	1	Total	C	O	0	0
			7	4	3		
2	F	1	Total	C	O	0	0
			10	6	4		

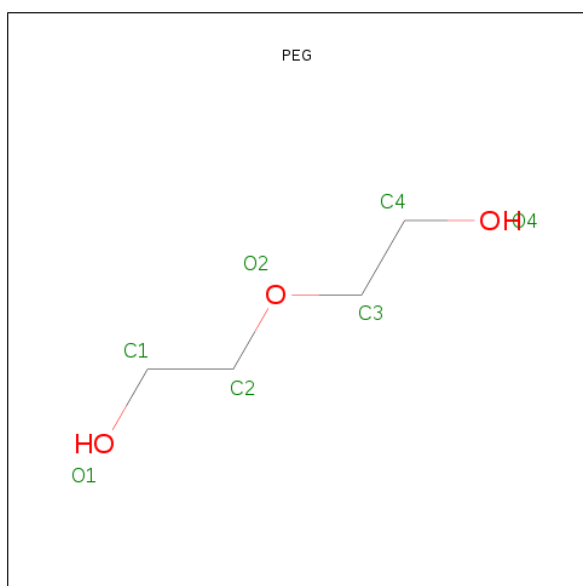
- Molecule 3 is 1,2-ETHANEDIOL (three-letter code: EDO) (formula: C<sub>2</sub>H<sub>6</sub>O<sub>2</sub>).





Mol	Chain	Residues	Atoms	ZeroOcc	AltConf
3	A	1	Total C O 4 2 2	0	0
3	B	1	Total C O 4 2 2	0	0
3	B	1	Total C O 4 2 2	0	0
3	C	1	Total C O 4 2 2	0	0
3	D	1	Total C O 4 2 2	0	0

- Molecule 4 is DI(HYDROXYETHYL)ETHER (three-letter code: PEG) (formula: C<sub>4</sub>H<sub>10</sub>O<sub>3</sub>).



Mol	Chain	Residues	Atoms	ZeroOcc	AltConf
4	A	1	Total C O 7 4 3	0	0
4	B	1	Total C O 4 2 2	0	0
4	C	1	Total C O 4 2 2	0	0
4	C	1	Total C O 7 4 3	0	0
4	C	1	Total C O 7 4 3	0	0
4	D	1	Total C O 4 2 2	0	0
4	D	1	Total C O 7 4 3	0	0

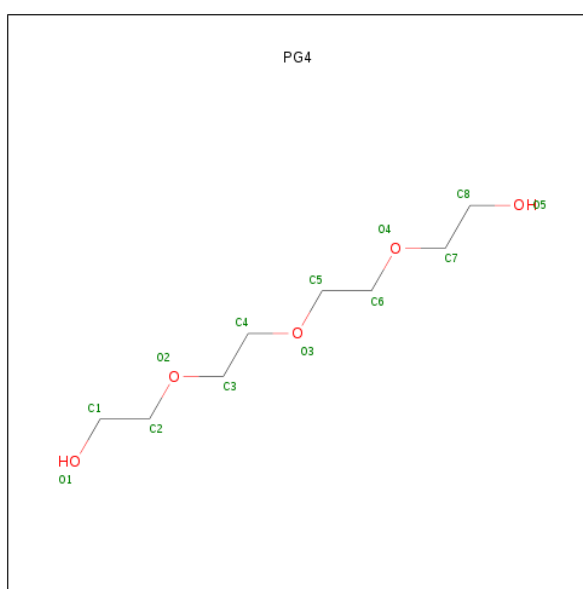
*Continued on next page...*



Continued from previous page...

Mol	Chain	Residues	Atoms			ZeroOcc	AltConf
4	D	1	Total	C	O	0	0
			4	2	2		
4	D	1	Total	C	O	0	0
			4	2	2		
4	E	1	Total	C	O	0	0
			7	4	3		
4	F	1	Total	C	O	0	0
			7	4	3		

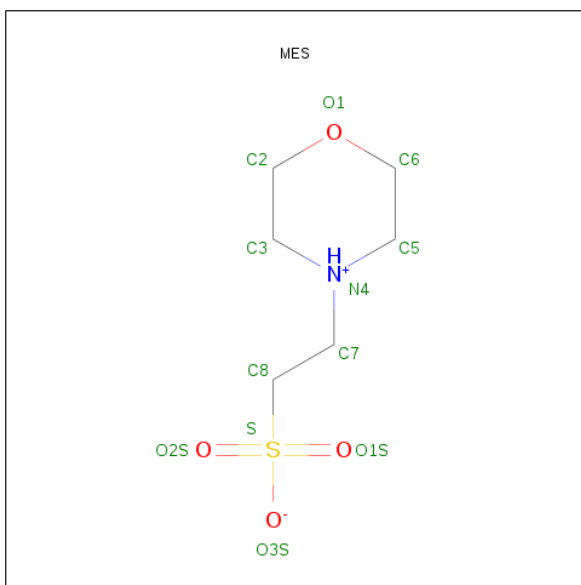
- Molecule 5 is TETRAETHYLENE GLYCOL (three-letter code: PG4) (formula: C<sub>8</sub>H<sub>18</sub>O<sub>5</sub>).



Mol	Chain	Residues	Atoms			ZeroOcc	AltConf
5	B	1	Total	C	O	0	0
			13	8	5		

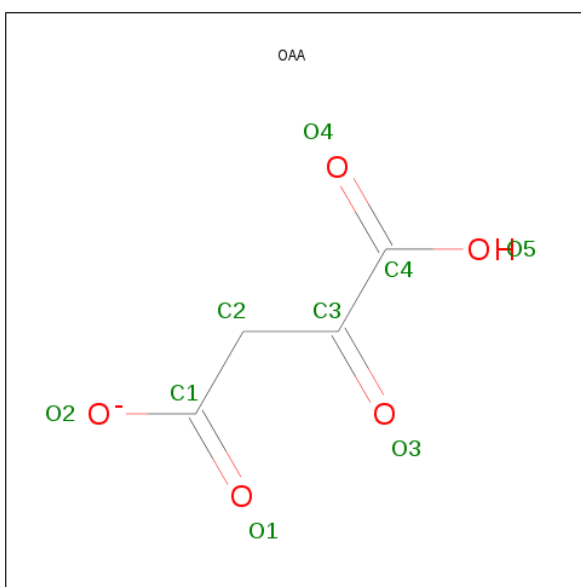
- Molecule 6 is 2-(N-MORPHOLINO)-ETHANESULFONICACID (three-letter code: MES) (formula: C<sub>6</sub>H<sub>13</sub>NO<sub>4</sub>S).





Mol	Chain	Residues	Atoms					ZeroOcc	AltConf
6	B	1	Total	C	N	O	S	0	0
			12	6	1	4	1		
6	D	1	Total	C	N	O	S	0	0
			12	6	1	4	1		
6	E	1	Total	C	N	O	S	0	0
			12	6	1	4	1		

- Molecule 7 is OXALOACETATE ION (three-letter code: OAA) (formula:  $C_4H_3O_5$ ).



Mol	Chain	Residues	Atoms			ZeroOcc	AltConf
7	C	1	Total	C	O	0	0
			9	4	5		

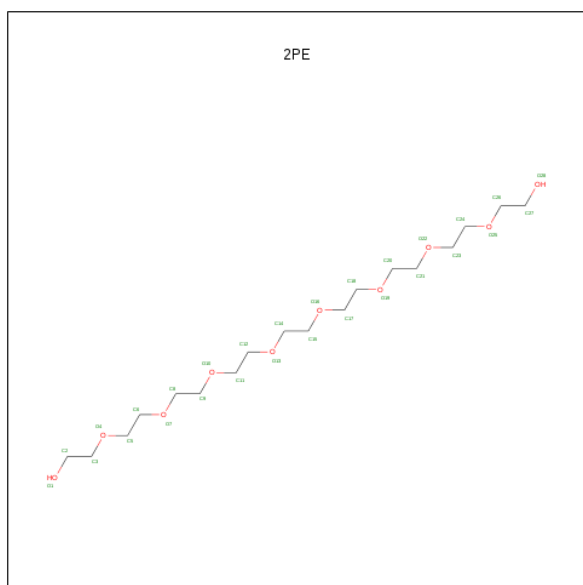
Continued on next page...



*Continued from previous page...*

Mol	Chain	Residues	Atoms			ZeroOcc	AltConf
7	C	1	Total	C	O	0	0
			9	4	5		
7	E	1	Total	C	O	0	0
			9	4	5		

- Molecule 8 is NONAETHYLENE GLYCOL (three-letter code: 2PE) (formula: C<sub>18</sub>H<sub>38</sub>O<sub>10</sub>).



Mol	Chain	Residues	Atoms			ZeroOcc	AltConf
8	D	1	Total	C	O	0	0
			19	12	7		

- Molecule 9 is water.

Mol	Chain	Residues	Atoms		ZeroOcc	AltConf
9	A	68	Total	O	0	0
			68	68		
9	B	36	Total	O	0	0
			36	36		
9	C	75	Total	O	0	0
			75	75		
9	D	37	Total	O	0	0
			37	37		
9	E	36	Total	O	0	0
			36	36		
9	F	49	Total	O	0	0
			49	49		

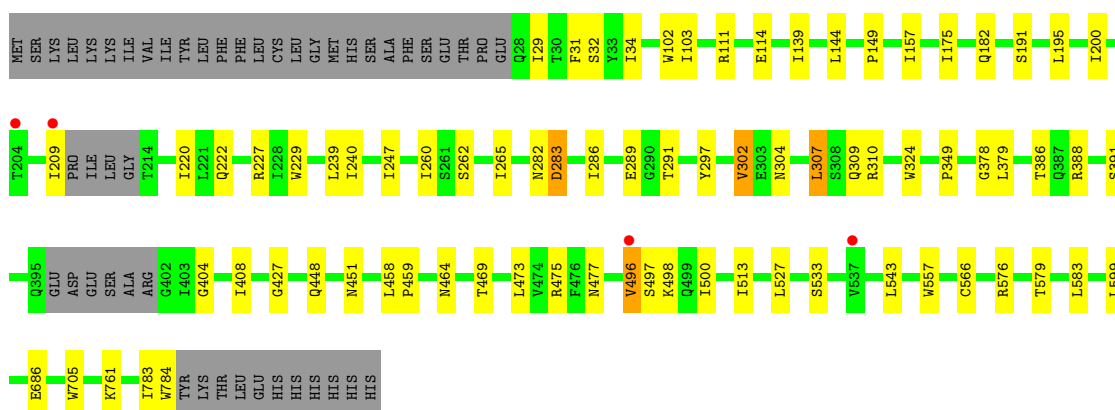


### 3 Residue-property plots

These plots are drawn for all protein, RNA and DNA chains in the entry. The first graphic for a chain summarises the proportions of errors displayed in the second graphic. The second graphic shows the sequence view annotated by issues in geometry and electron density. Residues are color-coded according to the number of geometric quality criteria for which they contain at least one outlier: green = 0, yellow = 1, orange = 2 and red = 3 or more. A red dot above a residue indicates a poor fit to the electron density ( $RSRZ > 2$ ). Stretches of 2 or more consecutive residues without any outlier are shown as a green connector. Residues present in the sample, but not in the model, are shown in grey.

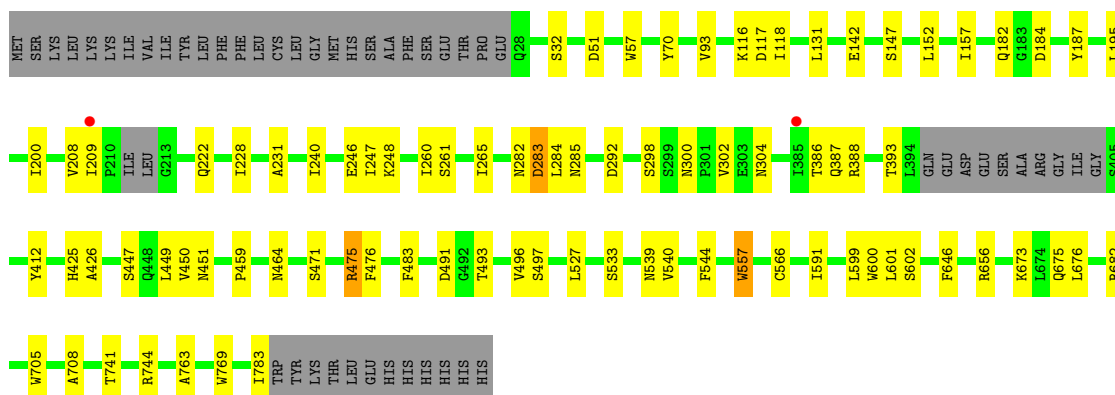
#### • Molecule 1: TWO-COMPONENT SYSTEM SENSOR HISTIDINE KINASE/RESPONSE

Chain A: 



#### • Molecule 1: TWO-COMPONENT SYSTEM SENSOR HISTIDINE KINASE/RESPONSE

Chain B: 



#### • Molecule 1: TWO-COMPONENT SYSTEM SENSOR HISTIDINE KINASE/RESPONSE

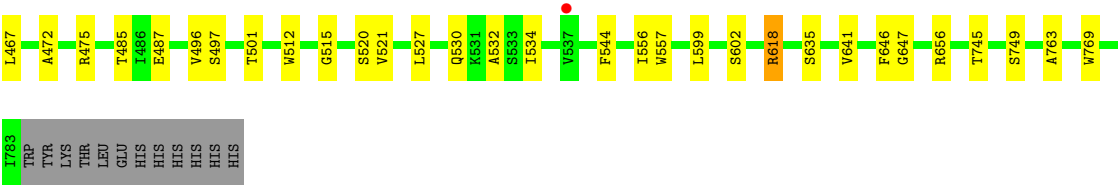
Chain C: 













## 4 Data and refinement statistics

Property	Value	Source
Space group	P 3 2 1	Depositor
Cell constants a, b, c, $\alpha$ , $\beta$ , $\gamma$	342.47Å 342.47Å 97.85Å 90.00° 90.00° 120.00°	Depositor
Resolution (Å)	296.59 – 2.60 62.97 – 2.60	Depositor EDS
% Data completeness (in resolution range)	95.0 (296.59-2.60) 90.3 (62.97-2.60)	Depositor EDS
$R_{merge}$	0.07	Depositor
$R_{sym}$	(Not available)	Depositor
$\langle I/\sigma(I) \rangle$ <sup>1</sup>	3.12 (at 2.61Å)	Xtriage
Refinement program	REFMAC 5.6.0117	Depositor
R, $R_{free}$	0.186 , 0.231 0.188 , 0.231	Depositor DCC
$R_{free}$ test set	9127 reflections (5.30%)	DCC
Wilson B-factor (Å <sup>2</sup> )	46.1	Xtriage
Anisotropy	0.302	Xtriage
Bulk solvent $k_{sol}$ (e/Å <sup>3</sup> ), $B_{sol}$ (Å <sup>2</sup> )	0.33 , 20.3	EDS
Estimated twinning fraction	0.029 for -h,-k,l	Xtriage
L-test for twinning	$\langle  L  \rangle = 0.47$ , $\langle L^2 \rangle = 0.30$	Xtriage
Outliers	0 of 181421 reflections	Xtriage
$F_o, F_c$ correlation	0.94	EDS
Total number of atoms	35839	wwPDB-VP
Average B, all atoms (Å <sup>2</sup> )	43.0	wwPDB-VP

Xtriage's analysis on translational NCS is as follows: *The largest off-origin peak in the Patterson function is 2.91% of the height of the origin peak. No significant pseudotranslation is detected.*

<sup>1</sup>Intensities estimated from amplitudes.



## 5 Model quality ⓘ

### 5.1 Standard geometry ⓘ

Bond lengths and bond angles in the following residue types are not validated in this section: PGE, OAA, EDO, PG4, 2PE, MES, PEG

The Z score for a bond length (or angle) is the number of standard deviations the observed value is removed from the expected value. A bond length (or angle) with  $|Z| > 5$  is considered an outlier worth inspection. RMSZ is the root-mean-square of all Z scores of the bond lengths (or angles).

Mol	Chain	Bond lengths		Bond angles	
		RMSZ	$\# Z  > 5$	RMSZ	$\# Z  > 5$
1	A	0.59	2/6006 (0.0%)	0.69	0/8175
1	B	0.59	2/6009 (0.0%)	0.70	1/8172 (0.0%)
1	C	0.59	1/6046 (0.0%)	0.70	1/8222 (0.0%)
1	D	0.58	2/6015 (0.0%)	0.68	0/8183
1	E	0.58	3/6029 (0.0%)	0.68	1/8196 (0.0%)
1	F	0.59	0/6024	0.69	1/8194 (0.0%)
All	All	0.59	10/36129 (0.0%)	0.69	4/49142 (0.0%)

Chiral center outliers are detected by calculating the chiral volume of a chiral center and verifying if the center is modelled as a planar moiety or with the opposite hand. A planarity outlier is detected by checking planarity of atoms in a peptide group, atoms in a mainchain group or atoms of a sidechain that are expected to be planar.

Mol	Chain	#Chirality outliers	#Planarity outliers
1	A	0	1

The worst 5 of 10 bond length outliers are listed below:

Mol	Chain	Res	Type	Atoms	Z	Observed(Å)	Ideal(Å)
1	A	784	TRP	CD2-CE2	6.03	1.48	1.41
1	E	512	TRP	CD2-CE2	5.64	1.48	1.41
1	D	705	TRP	CD2-CE2	5.52	1.48	1.41
1	E	466	TRP	CD2-CE2	5.49	1.48	1.41
1	D	737	TRP	CD2-CE2	5.25	1.47	1.41

All (4) bond angle outliers are listed below:

Mol	Chain	Res	Type	Atoms	Z	Observed(°)	Ideal(°)
1	B	475	ARG	NE-CZ-NH1	5.46	123.03	120.30
1	E	618	ARG	NE-CZ-NH2	-5.34	117.63	120.30

*Continued on next page...*



*Continued from previous page...*

Mol	Chain	Res	Type	Atoms	Z	Observed(°)	Ideal(°)
1	F	618	ARG	NE-CZ-NH1	5.25	122.93	120.30
1	C	434	ARG	NE-CZ-NH2	-5.12	117.74	120.30

There are no chirality outliers.

All (1) planarity outliers are listed below:

Mol	Chain	Res	Type	Group
1	A	404	GLY	Peptide

## 5.2 Close contacts ⓘ

In the following table, the Non-H and H(model) columns list the number of non-hydrogen atoms and hydrogen atoms in the chain respectively. The H(added) column lists the number of hydrogens added by MolProbity. The Clashes column lists the number of clashes within the asymmetric unit, and the number in parentheses is this value normalized per 1000 atoms of the molecule in the chain. The Symm-Clashes column gives symmetry related clashes, in the same way as for the Clashes column.

Mol	Chain	Non-H	H(model)	H(added)	Clashes	Symm-Clashes
1	A	5869	0	5549	38	0
1	B	5873	0	5582	50	0
1	C	5910	0	5615	48	0
1	D	5880	0	5556	37	0
1	E	5893	0	5609	51	0
1	F	5889	0	5568	41	0
2	A	20	0	28	0	0
2	B	10	0	14	0	0
2	E	7	0	9	0	0
2	F	10	0	14	0	0
3	A	4	0	6	0	0
3	B	8	0	12	0	0
3	C	4	0	6	0	0
3	D	4	0	6	0	0
4	A	7	0	10	0	0
4	B	4	0	5	0	0
4	C	18	0	25	1	0
4	D	19	0	25	1	0
4	E	7	0	10	0	0
4	F	7	0	10	0	0
5	B	13	0	18	0	0
6	B	12	0	12	0	0

*Continued on next page...*



*Continued from previous page...*

Mol	Chain	Non-H	H(model)	H(added)	Clashes	Symm-Clashes
6	D	12	0	12	0	0
6	E	12	0	12	2	0
7	C	18	0	4	0	0
7	E	9	0	2	0	0
8	D	19	0	25	0	0
9	A	68	0	0	0	0
9	B	36	0	0	1	0
9	C	75	0	0	0	0
9	D	37	0	0	0	0
9	E	36	0	0	1	0
9	F	49	0	0	0	0
All	All	35839	0	33744	259	0

Clashscore is defined as the number of clashes calculated for the entry per 1000 atoms (including hydrogens) of the entry. The overall clashscore for this entry is 4.

The worst 5 of 259 close contacts within the same asymmetric unit are listed below.

Atom-1	Atom-2	Distance(Å)	Clash(Å)
1:D:755:THR:HG22	1:D:779:ILE:HG23	1.45	0.96
1:B:208:VAL:HG12	1:B:209:ILE:HD13	1.59	0.82
1:E:425:HIS:O	1:E:453:ASN:ND2	2.14	0.80
1:C:393:THR:C	1:C:403:ILE:HG22	2.06	0.77
1:F:105:THR:HG22	1:F:107:ASP:H	1.48	0.75

There are no symmetry-related clashes.

## 5.3 Torsion angles

### 5.3.1 Protein backbone ⓘ

In the following table, the Percentiles column shows the percent Ramachandran outliers of the chain as a percentile score with respect to all X-ray entries followed by that with respect to entries of similar resolution.

The Analysed column shows the number of residues for which the backbone conformation was analysed, and the total number of residues.

Mol	Chain	Analysed	Favoured	Allowed	Outliers	Percentiles
1	A	741/795 (93%)	713 (96%)	25 (3%)	3 (0%)	43 72
1	B	738/795 (93%)	709 (96%)	27 (4%)	2 (0%)	50 77

*Continued on next page...*



*Continued from previous page...*

Mol	Chain	Analysed	Favoured	Allowed	Outliers	Percentiles	
1	C	743/795 (94%)	721 (97%)	19 (3%)	3 (0%)	43	72
1	D	737/795 (93%)	720 (98%)	16 (2%)	1 (0%)	59	85
1	E	738/795 (93%)	716 (97%)	20 (3%)	2 (0%)	50	77
1	F	743/795 (94%)	710 (96%)	30 (4%)	3 (0%)	43	72
All	All	4440/4770 (93%)	4289 (97%)	137 (3%)	14 (0%)	50	77

5 of 14 Ramachandran outliers are listed below:

Mol	Chain	Res	Type
1	A	497	SER
1	B	283	ASP
1	E	497	SER
1	A	283	ASP
1	C	283	ASP

### 5.3.2 Protein sidechains ⓘ

In the following table, the Percentiles column shows the percent sidechain outliers of the chain as a percentile score with respect to all X-ray entries followed by that with respect to entries of similar resolution. The Analysed column shows the number of residues for which the sidechain conformation was analysed, and the total number of residues.

Mol	Chain	Analysed	Rotameric	Outliers	Percentiles	
1	A	632/712 (89%)	615 (97%)	17 (3%)	57	85
1	B	635/712 (89%)	619 (98%)	16 (2%)	60	86
1	C	640/712 (90%)	621 (97%)	19 (3%)	53	82
1	D	634/712 (89%)	622 (98%)	12 (2%)	69	91
1	E	641/712 (90%)	630 (98%)	11 (2%)	73	92
1	F	631/712 (89%)	616 (98%)	15 (2%)	61	87
All	All	3813/4272 (89%)	3723 (98%)	90 (2%)	61	87

5 of 90 residues with a non-rotameric sidechain are listed below:

Mol	Chain	Res	Type
1	C	309	GLN
1	C	714	VAL
1	F	487	GLU
1	C	338	ILE

*Continued on next page...*



*Continued from previous page...*

Mol	Chain	Res	Type
1	C	525	GLU

Some sidechains can be flipped to improve hydrogen bonding and reduce clashes. 5 of 14 such sidechains are listed below:

Mol	Chain	Res	Type
1	D	120	GLN
1	E	304	ASN
1	F	241	ASN
1	C	722	GLN
1	F	222	GLN

### 5.3.3 RNA ⓘ

There are no RNA chains in this entry.

## 5.4 Non-standard residues in protein, DNA, RNA chains ⓘ

There are no non-standard protein/DNA/RNA residues in this entry.

## 5.5 Carbohydrates ⓘ

There are no carbohydrates in this entry.

## 5.6 Ligand geometry ⓘ

29 ligands are modelled in this entry.

In the following table, the Counts columns list the number of bonds (or angles) for which Mogul statistics could be retrieved, the number of bonds (or angles) that are observed in the model and the number of bonds (or angles) that are defined in the chemical component dictionary. The Link column lists molecule types, if any, to which the group is linked. The Z score for a bond length (or angle) is the number of standard deviations the observed value is removed from the expected value. A bond length (or angle) with  $|Z| > 2$  is considered an outlier worth inspection. RMSZ is the root-mean-square of all Z scores of the bond lengths (or angles).

Mol	Type	Chain	Res	Link	Bond lengths			Bond angles		
					Counts	RMSZ	$\# Z  > 2$	Counts	RMSZ	$\# Z  > 2$
2	PGE	A	1785	-	9,9,9	0.55	0	8,8,8	0.53	0
2	PGE	A	1786	-	9,9,9	0.66	0	8,8,8	0.38	0
3	EDO	A	1787	-	3,3,3	0.59	0	2,2,2	0.27	0



Mol	Type	Chain	Res	Link	Bond lengths			Bond angles		
					Counts	RMSZ	# Z  > 2	Counts	RMSZ	# Z  > 2
4	PEG	A	1788	-	6,6,6	0.58	0	5,5,5	0.42	0
4	PEG	B	1784	-	3,3,6	1.02	0	2,2,5	0.52	0
5	PG4	B	1785	-	12,12,12	0.59	0	11,11,11	0.34	0
2	PGE	B	1786	-	9,9,9	0.56	0	8,8,8	0.34	0
3	EDO	B	1787	-	3,3,3	0.58	0	2,2,2	0.38	0
3	EDO	B	1788	-	3,3,3	0.58	0	2,2,2	0.29	0
6	MES	B	1789	-	12,12,12	2.19	3 (25%)	16,16,16	4.84	13 (81%)
4	PEG	C	1784	-	3,3,6	0.67	0	2,2,5	0.90	0
4	PEG	C	1785	-	6,6,6	0.55	0	5,5,5	0.25	0
3	EDO	C	1786	-	3,3,3	0.56	0	2,2,2	0.34	0
4	PEG	C	1787	-	6,6,6	0.64	0	5,5,5	0.54	0
7	OAA	C	1788	-	6,8,8	4.07	3 (50%)	7,10,10	2.75	3 (42%)
7	OAA	C	1789	-	6,8,8	4.27	3 (50%)	7,10,10	2.87	4 (57%)
4	PEG	D	1784	-	3,3,6	1.00	0	2,2,5	0.54	0
4	PEG	D	1785	-	6,6,6	0.45	0	5,5,5	0.40	0
4	PEG	D	1786	-	3,3,6	0.80	0	2,2,5	0.84	0
3	EDO	D	1787	-	3,3,3	0.54	0	2,2,2	0.39	0
8	2PE	D	1788	-	18,18,27	0.64	0	17,17,26	0.57	0
4	PEG	D	1789	-	3,3,6	0.96	0	2,2,5	0.89	0
6	MES	D	1790	-	12,12,12	1.98	2 (16%)	16,16,16	5.02	10 (62%)
4	PEG	E	1784	-	6,6,6	0.51	0	5,5,5	0.32	0
2	PGE	E	1785	-	6,6,9	0.74	0	5,5,8	0.60	0
7	OAA	E	1786	-	6,8,8	4.29	3 (50%)	7,10,10	1.57	2 (28%)
6	MES	E	1787	-	12,12,12	2.23	1 (8%)	16,16,16	5.19	12 (75%)
2	PGE	F	1784	-	9,9,9	0.65	0	8,8,8	0.41	0
4	PEG	F	1785	-	6,6,6	0.52	0	5,5,5	0.20	0

In the following table, the Chirals column lists the number of chiral outliers, the number of chiral centers analysed, the number of these observed in the model and the number defined in the chemical component dictionary. Similar counts are reported in the Torsion and Rings columns. '-' means no outliers of that kind were identified.

Mol	Type	Chain	Res	Link	Chirals	Torsions	Rings
2	PGE	A	1785	-	-	0/7/7/7	0/0/0/0
2	PGE	A	1786	-	-	0/7/7/7	0/0/0/0
3	EDO	A	1787	-	-	0/1/1/1	0/0/0/0
4	PEG	A	1788	-	-	0/4/4/4	0/0/0/0
4	PEG	B	1784	-	-	0/1/1/4	0/0/0/0
5	PG4	B	1785	-	-	0/10/10/10	0/0/0/0
2	PGE	B	1786	-	-	0/7/7/7	0/0/0/0
3	EDO	B	1787	-	-	0/1/1/1	0/0/0/0

*Continued on next page...*



*Continued from previous page...*

Mol	Type	Chain	Res	Link	Chirals	Torsions	Rings
3	EDO	B	1788	-	-	0/1/1/1	0/0/0/0
6	MES	B	1789	-	-	0/6/14/14	0/1/1/1
4	PEG	C	1784	-	-	0/1/1/4	0/0/0/0
4	PEG	C	1785	-	-	0/4/4/4	0/0/0/0
3	EDO	C	1786	-	-	0/1/1/1	0/0/0/0
4	PEG	C	1787	-	-	0/4/4/4	0/0/0/0
7	OAA	C	1788	-	-	0/6/8/8	0/0/0/0
7	OAA	C	1789	-	-	0/6/8/8	0/0/0/0
4	PEG	D	1784	-	-	0/1/1/4	0/0/0/0
4	PEG	D	1785	-	-	0/4/4/4	0/0/0/0
4	PEG	D	1786	-	-	0/1/1/4	0/0/0/0
3	EDO	D	1787	-	-	0/1/1/1	0/0/0/0
8	2PE	D	1788	-	-	0/16/16/25	0/0/0/0
4	PEG	D	1789	-	-	0/1/1/4	0/0/0/0
6	MES	D	1790	-	-	0/6/14/14	0/1/1/1
4	PEG	E	1784	-	-	0/4/4/4	0/0/0/0
2	PGE	E	1785	-	-	0/4/4/7	0/0/0/0
7	OAA	E	1786	-	-	0/6/8/8	0/0/0/0
6	MES	E	1787	-	-	0/6/14/14	0/1/1/1
2	PGE	F	1784	-	-	0/7/7/7	0/0/0/0
4	PEG	F	1785	-	-	0/4/4/4	0/0/0/0

The worst 5 of 15 bond length outliers are listed below:

Mol	Chain	Res	Type	Atoms	Z	Observed(Å)	Ideal(Å)
7	E	1786	OAA	O3-C3	9.39	1.44	1.23
7	C	1789	OAA	O3-C3	9.28	1.44	1.23
7	C	1788	OAA	O3-C3	8.96	1.43	1.23
6	E	1787	MES	C8-S	-6.83	1.66	1.78
6	B	1789	MES	C8-S	-6.19	1.67	1.78

The worst 5 of 44 bond angle outliers are listed below:

Mol	Chain	Res	Type	Atoms	Z	Observed(°)	Ideal(°)
6	E	1787	MES	O2S-S-O1S	-13.84	80.06	112.39
6	B	1789	MES	O2S-S-O1S	-13.08	81.84	112.39
6	D	1790	MES	O2S-S-O1S	-11.96	84.45	112.39
6	D	1790	MES	O3S-S-O1S	-10.19	85.85	112.50
6	B	1789	MES	O3S-S-O1S	-7.34	93.30	112.50

There are no chirality outliers.

There are no torsion outliers.



There are no ring outliers.

## 5.7 Other polymers ⓘ

There are no such residues in this entry.

## 5.8 Polymer linkage issues

There are no chain breaks in this entry.



## 6 Fit of model and data ⓘ

### 6.1 Protein, DNA and RNA chains ⓘ

In the following table, the column labelled ‘#RSRZ> 2’ contains the number (and percentage) of RSRZ outliers, followed by percent RSRZ outliers for the chain as percentile scores relative to all X-ray entries and entries of similar resolution. The OWAB column contains the minimum, median, 95<sup>th</sup> percentile and maximum values of the occupancy-weighted average B-factor per residue. The column labelled ‘Q< 0.9’ lists the number of (and percentage) of residues with an average occupancy less than 0.9.

Mol	Chain	Analysed	<RSRZ>	#RSRZ>2	OWAB(Å <sup>2</sup> )	Q<0.9
1	A	747/795 (93%)	-0.42	4 (0%) 88 90	22, 41, 76, 95	0
1	B	744/795 (93%)	-0.43	2 (0%) 91 92	25, 42, 69, 97	0
1	C	749/795 (94%)	-0.47	0 100 100	23, 39, 67, 93	0
1	D	745/795 (93%)	-0.38	3 (0%) 90 91	26, 42, 70, 101	0
1	E	744/795 (93%)	-0.38	2 (0%) 91 92	26, 43, 66, 89	0
1	F	749/795 (94%)	-0.41	3 (0%) 90 91	23, 40, 71, 87	0
All	All	4478/4770 (93%)	-0.42	14 (0%) 91 92	22, 41, 70, 101	0

The worst 5 of 14 RSRZ outliers are listed below:

Mol	Chain	Res	Type	RSRZ
1	E	783	ILE	3.6
1	A	537	VAL	2.9
1	B	385	ILE	2.8
1	A	496	VAL	2.6
1	A	204	THR	2.6

### 6.2 Non-standard residues in protein, DNA, RNA chains ⓘ

There are no non-standard protein/DNA/RNA residues in this entry.

### 6.3 Carbohydrates ⓘ

There are no carbohydrates in this entry.



## 6.4 Ligands ⓘ

In the following table, the Atoms column lists the number of modelled atoms in the group and the number defined in the chemical component dictionary. LLDF column lists the quality of electron density of the group with respect to its neighbouring residues in protein, DNA or RNA chains. The B-factors column lists the minimum, median, 95<sup>th</sup> percentile and maximum values of B factors of atoms in the group. The column labelled 'Q< 0.9' lists the number of atoms with occupancy less than 0.9.

Mol	Type	Chain	Res	Atoms	RSR	LLDF	B-factors(Å <sup>2</sup> )	Q<0.9
4	PEG	C	1787	7/7	0.32	16.36	54,56,58,60	0
4	PEG	F	1785	7/7	0.30	10.53	61,67,72,72	0
7	OAA	C	1788	9/9	0.18	8.52	63,67,71,77	0
7	OAA	C	1789	9/9	0.22	8.12	69,71,72,73	0
3	EDO	A	1787	4/4	0.20	5.95	47,48,51,51	0
4	PEG	D	1785	7/7	0.34	5.73	69,70,79,80	0
4	PEG	D	1786	4/7	0.26	4.87	58,61,63,64	0
7	OAA	E	1786	9/9	0.23	4.78	74,75,78,79	0
4	PEG	B	1784	4/7	0.20	4.35	49,49,50,50	0
3	EDO	B	1787	4/4	0.18	4.20	56,58,58,62	0
4	PEG	D	1784	4/7	0.26	3.75	49,52,55,59	0
4	PEG	E	1784	7/7	0.24	3.39	60,62,65,66	0
2	PGE	A	1785	10/10	0.19	3.38	50,52,55,57	0
6	MES	B	1789	12/12	0.18	3.14	71,75,95,99	0
4	PEG	C	1785	7/7	0.21	3.14	67,73,77,78	0
4	PEG	A	1788	7/7	0.18	2.58	52,54,55,57	0
6	MES	E	1787	12/12	0.19	2.55	60,63,75,84	0
2	PGE	E	1785	7/10	0.20	2.52	60,62,68,69	0
2	PGE	A	1786	10/10	0.17	2.42	49,55,58,59	0
8	2PE	D	1788	19/28	0.17	2.15	44,48,57,60	0
5	PG4	B	1785	13/13	0.18	1.04	47,49,51,52	0
6	MES	D	1790	12/12	0.17	0.69	66,70,74,78	0
2	PGE	F	1784	10/10	0.14	0.11	43,47,49,52	0
3	EDO	C	1786	4/4	0.14	0.08	60,60,60,61	0
3	EDO	B	1788	4/4	0.14	-0.01	65,69,70,70	0
3	EDO	D	1787	4/4	0.12	-0.24	54,56,57,60	0
2	PGE	B	1786	10/10	0.13	-0.33	43,49,51,53	0
4	PEG	D	1789	4/7	0.13	-0.57	50,51,54,54	0
4	PEG	C	1784	4/7	0.10	-1.37	51,51,52,53	0

## 6.5 Other polymers ⓘ

There are no such residues in this entry.