



Full wwPDB X-ray Structure Validation Report

Feb 28, 2014 – 08:06 AM GMT

PDB ID : 2A3Z
Title : Ternary complex of the WH2 domain of WASP with Actin-DNAse I
Authors : Chereau, D.; Kerff, F.; Dominguez, R.
Deposited on : 2005-06-27
Resolution : 2.08 Å(reported)

This is a full wwPDB validation report for a publicly released PDB entry.
We welcome your comments at validation@mail.wwpdb.org
A user guide is available at <http://wwpdb.org/ValidationPDFNotes.html>

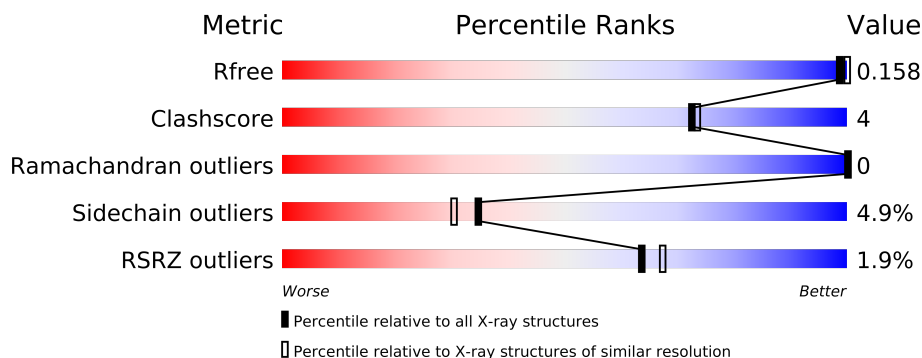
The following versions of software and data (see [references](#)) were used in the production of this report:

MolProbity : 4.02b-467
Mogul : 1.15 2013
Xtriage (Phenix) : dev-1323
EDS : stable22639
Percentile statistics : 21963
Refmac : 5.8.0049
CCP4 : 6.3.0 (Settle)
Ideal geometry (proteins) : Engh & Huber (2001)
Ideal geometry (DNA, RNA) : Parkinson et. al. (1996)
Validation Pipeline (wwPDB-VP) : stable22683

1 Overall quality at a glance

The reported resolution of this entry is 2.08 Å.

Percentile scores (ranging between 0-100) for global validation metrics of the entry are shown in the following graphic. The table shows the number of entries on which the scores are based.



Metric	Whole archive (#Entries)	Similar resolution (#Entries, resolution range(Å))
R_{free}	66092	3396 (2.10-2.06)
Clashscore	79885	4085 (2.10-2.06)
Ramachandran outliers	78287	4045 (2.10-2.06)
Sidechain outliers	78261	4046 (2.10-2.06)
RSRZ outliers	66119	3397 (2.10-2.06)

The table below summarises the geometric issues observed across the polymeric chains and their fit to the electron density. The red, orange, yellow and green segments on the lower bar indicate the fraction of residues that contain outliers for ≥ 3 , 2, 1 and 0 types of geometric quality criteria. The upper red bar (where present) indicates the fraction of residues that have poor fit to the electron density.

Mol	Chain	Length	Quality of chain
1	A	375	
2	B	260	
3	C	29	

The following table lists non-polymeric compounds that are outliers for geometric or electron-density-fit criteria:

Mol	Type	Chain	Res	Geometry	Electron density
8	GOL	A	1382	-	X
8	GOL	A	1383	-	X
8	GOL	B	1384	-	X
9	FMT	B	1275	-	X

2 Entry composition

There are 10 unique types of molecules in this entry. The entry contains 5584 atoms, of which 0 are hydrogen and 0 are deuterium.

In the tables below, the ZeroOcc column contains the number of atoms modelled with zero occupancy, the AltConf column contains the number of residues with at least one atom in alternate conformation and the Trace column contains the number of residues modelled with at most 2 atoms.

- Molecule 1 is a protein called Actin, alpha skeletal muscle.

Mol	Chain	Residues	Atoms					ZeroOcc	AltConf	Trace
1	A	361	Total	C	N	O	S	0	17	0
			2903	1844	481	557	21			

There is a discrepancy between the modelled and reference sequences:

Chain	Residue	Modelled	Actual	Comment	Reference
A	73	HIC	HIS	MODIFIED RESIDUE	UNP P68135

- Molecule 2 is a protein called Deoxyribonuclease-1.

Mol	Chain	Residues	Atoms					ZeroOcc	AltConf	Trace
2	B	260	Total	C	N	O	S	0	4	0
			2069	1311	345	405	8			

- Molecule 3 is a protein called Wiskott-Aldrich syndrome protein.

Mol	Chain	Residues	Atoms					ZeroOcc	AltConf	Trace
3	C	17	Total	C	N	O		0	0	0
			134	82	28	24				

- Molecule 4 is a polymer of unknown type called SUGAR (2-MER).

Mol	Chain	Residues	Atoms					ZeroOcc	AltConf
4	B	2	Total	C	N	O		0	0
			28	16	2	10			

- Molecule 5 is CALCIUM ION (three-letter code: CA) (formula: Ca).

Mol	Chain	Residues	Atoms		ZeroOcc	AltConf
5	B	1	Total	Ca	0	0
			1	1		

Continued on next page...

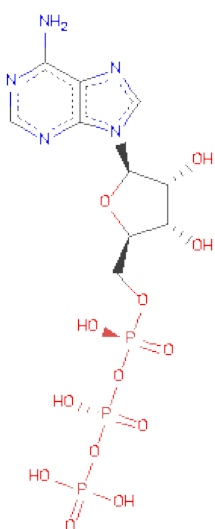
Continued from previous page...

Mol	Chain	Residues	Atoms		ZeroOcc	AltConf
5	A	1	Total	Ca	0	0
			1	1		

- Molecule 6 is MAGNESIUM ION (three-letter code: MG) (formula: Mg).

Mol	Chain	Residues	Atoms		ZeroOcc	AltConf
6	B	1	Total	Mg	0	0
			1	1		

- Molecule 7 is ADENOSINE-5'-TRIPHOSPHATE (three-letter code: ATP) (formula: $C_{10}H_{16}N_5O_{13}P_3$).



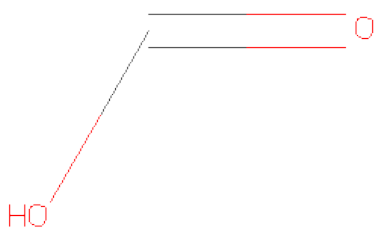
Mol	Chain	Residues	Atoms					ZeroOcc	AltConf
7	A	1	Total	C	N	O	P	0	0
			31	10	5	13	3		

- Molecule 8 is GLYCEROL (three-letter code: GOL) (formula: $C_3H_8O_3$).



Mol	Chain	Residues	Atoms			ZeroOcc	AltConf
8	A	1	Total	C	O	0	0
			6	3	3		
8	A	1	Total	C	O	0	0
			6	3	3		
8	B	1	Total	C	O	0	0
			6	3	3		

- Molecule 9 is FORMIC ACID (three-letter code: FMT) (formula: CH_2O_2).



Mol	Chain	Residues	Atoms			ZeroOcc	AltConf
9	B	1	Total	C	O	0	0
			3	1	2		

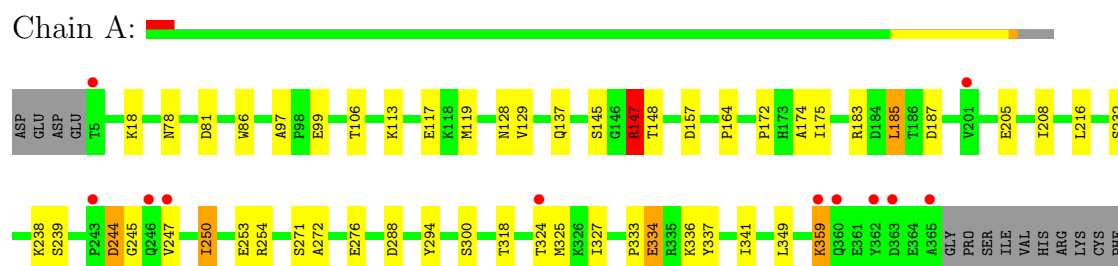
- Molecule 10 is water.

Mol	Chain	Residues	Atoms		ZeroOcc	AltConf
10	A	235	Total 235	O 235	0	0
10	B	156	Total 156	O 156	0	0
10	C	4	Total 4	O 4	0	0

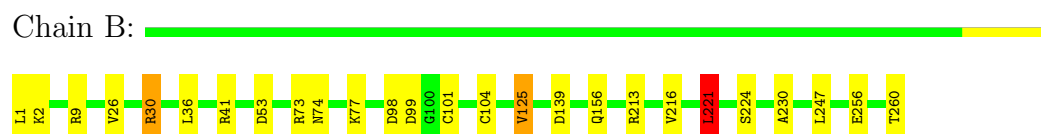
3 Residue-property plots

These plots are drawn for all protein, RNA and DNA chains in the entry. The first graphic for a chain summarises the proportions of errors displayed in the second graphic. The second graphic shows the sequence view annotated by issues in geometry and electron density. Residues are color-coded according to the number of geometric quality criteria for which they contain at least one outlier: green = 0, yellow = 1, orange = 2 and red = 3 or more. A red dot above a residue indicates a poor fit to the electron density ($RSRZ > 2$). Stretches of 2 or more consecutive residues without any outlier are shown as a green connector. Residues present in the sample, but not in the model, are shown in grey.

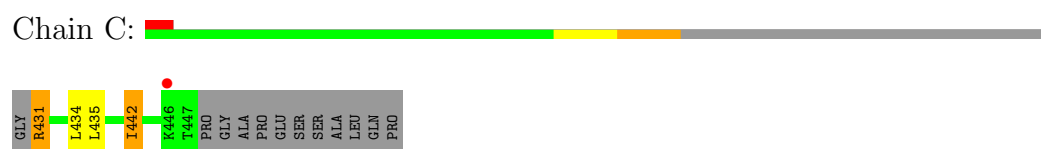
- Molecule 1: Actin, alpha skeletal muscle



- Molecule 2: Deoxyribonuclease-1



- Molecule 3: Wiskott-Aldrich syndrome protein



4 Data and refinement statistics

Property	Value	Source
Space group	C 1 2 1	Depositor
Cell constants a, b, c, α , β , γ	153.27Å 41.80Å 119.42Å 90.00° 108.68° 90.00°	Depositor
Resolution (Å)	40.10 – 2.08 40.17 – 2.08	Depositor EDS
% Data completeness (in resolution range)	95.8 (40.10-2.08) 95.8 (40.17-2.08)	Depositor EDS
R_{merge}	0.08	Depositor
R_{sym}	(Not available)	Depositor
$\langle I/\sigma(I) \rangle$ ¹	3.55 (at 2.08Å)	Xtriage
Refinement program	REFMAC 5.2.0005	Depositor
R, R_{free}	0.153 , 0.210 0.164 , 0.158	Depositor DCC
R_{free} test set	4133 reflections (9.84%)	DCC
Wilson B-factor (Å ²)	29.4	Xtriage
Anisotropy	0.131	Xtriage
Bulk solvent k_{sol} (e/Å ³), B_{sol} (Å ²)	0.36 , 40.2	EDS
Estimated twinning fraction	No twinning to report.	Xtriage
L-test for twinning	$\langle L \rangle = 0.48$, $\langle L^2 \rangle = 0.32$	Xtriage
Outliers	0 of 42018 reflections	Xtriage
F_o, F_c correlation	0.96	EDS
Total number of atoms	5584	wwPDB-VP
Average B, all atoms (Å ²)	33.0	wwPDB-VP

Xtriage's analysis on translational NCS is as follows: *The largest off-origin peak in the Patterson function is 5.60% of the height of the origin peak. No significant pseudotranslation is detected.*

¹Intensities estimated from amplitudes.

5 Model quality

5.1 Standard geometry

Bond lengths and bond angles in the following residue types are not validated in this section: GOL, MG, NAG, FMT, HIC, ATP, CA

The Z score for a bond length (or angle) is the number of standard deviations the observed value is removed from the expected value. A bond length (or angle) with $|Z| > 5$ is considered an outlier worth inspection. RMSZ is the root-mean-square of all Z scores of the bond lengths (or angles).

Mol	Chain	Bond lengths		Bond angles	
		RMSZ	$\# Z > 5$	RMSZ	$\# Z > 5$
1	A	0.71	0/3001	0.86	3/4061 (0.1%)
2	B	0.71	0/2127	0.95	5/2895 (0.2%)
3	C	0.47	0/133	0.80	0/176
All	All	0.71	0/5261	0.89	8/7132 (0.1%)

There are no bond length outliers.

All (8) bond angle outliers are listed below:

Mol	Chain	Res	Type	Atoms	Z	Observed(°)	Ideal(°)
2	B	30[A]	ARG	NE-CZ-NH1	7.14	123.87	120.30
2	B	30[B]	ARG	NE-CZ-NH1	7.14	123.87	120.30
2	B	53	ASP	CB-CG-OD1	6.12	123.81	118.30
1	A	147	ARG	NE-CZ-NH2	5.87	123.23	120.30
2	B	213	ARG	NE-CZ-NH2	-5.49	117.56	120.30
1	A	185	LEU	CB-CG-CD1	5.22	119.87	111.00
1	A	187	ASP	CB-CG-OD1	5.18	122.96	118.30
2	B	221	LEU	CB-CG-CD2	5.14	119.75	111.00

There are no chirality outliers.

There are no planarity outliers.

5.2 Close contacts

In the following table, the Non-H and H(model) columns list the number of non-hydrogen atoms and hydrogen atoms in the chain respectively. The H(added) column lists the number of hydrogens added by MolProbity. The Clashes column lists the number of clashes within the asymmetric unit, and the number in parentheses is this value normalized per 1000 atoms of the molecule in the chain. The Symm-Clashes column gives symmetry related clashes, in the same way as for the Clashes column.

Mol	Chain	Non-H	H(model)	H(added)	Clashes	Symm-Clashes
1	A	2903	0	2914	34	0
2	B	2069	0	2011	8	0
3	C	134	0	145	3	0
4	B	28	0	25	0	0
5	A	1	0	0	0	0
5	B	1	0	0	0	0
6	B	1	0	0	0	0
7	A	31	0	12	0	0
8	A	12	0	16	3	0
8	B	6	0	8	0	0
9	B	3	0	1	0	0
10	A	235	0	0	4	0
10	B	156	0	0	1	0
10	C	4	0	0	2	0
All	All	5584	0	5132	44	0

Clashscore is defined as the number of clashes calculated for the entry per 1000 atoms (including hydrogens) of the entry. The overall clashscore for this entry is 4.

All (44) close contacts within the same asymmetric unit are listed below.

Atom-1	Atom-2	Distance(Å)	Clash(Å)
1:A:216:LEU:HD22	1:A:238[A]:LYS:HG2	1.60	0.83
3:C:431:ARG:NH2	10:C:381:HOH:O	2.19	0.70
1:A:238[A]:LYS:HE2	10:A:1618:HOH:O	1.93	0.69
2:B:125:VAL:HG22	2:B:224:SER:OG	1.92	0.69
1:A:172:PRO:HA	1:A:175:ILE:HD12	1.77	0.66
1:A:324:THR:O	1:A:324:THR:HG22	1.94	0.66
1:A:205:GLU:HA	1:A:208:ILE:HD12	1.83	0.60
1:A:254:ARG:HH22	8:A:1383:GOL:H31	1.70	0.56
1:A:86:TRP:CH2	1:A:119[B]:MET:HG3	2.40	0.56
1:A:97:ALA:HB1	1:A:99:GLU:OE2	2.06	0.55
1:A:333:PRO:HD2	1:A:334:GLU:OE2	2.07	0.55
2:B:73:ARG:HH11	2:B:73:ARG:HG3	1.73	0.52
1:A:238[A]:LYS:CE	10:A:1618:HOH:O	2.53	0.52
2:B:74:ASN:ND2	10:B:1509:HOH:O	2.43	0.51
1:A:336:LYS:HE2	10:A:1601:HOH:O	2.10	0.50
1:A:18:LYS:HD3	1:A:18:LYS:N	2.27	0.50
1:A:324:THR:O	1:A:324:THR:CG2	2.61	0.49
1:A:244[B]:ASP:CG	1:A:245:GLY:N	2.65	0.48
2:B:230:ALA:HA	2:B:256:GLU:O	2.12	0.48
1:A:86:TRP:HH2	1:A:119[B]:MET:HG3	1.79	0.48
1:A:254:ARG:HH12	8:A:1383:GOL:H31	1.78	0.47
1:A:129:VAL:O	1:A:359:LYS:HG3	2.15	0.47

Continued on next page...

Continued from previous page...

Atom-1	Atom-2	Distance(Å)	Clash(Å)
2:B:26:VAL:O	2:B:30[B]:ARG:HG3	2.15	0.46
1:A:349:LEU:HD23	3:C:442:ILE:HG13	1.98	0.46
1:A:318:THR:HA	1:A:327:ILE:HD13	1.98	0.46
2:B:216:VAL:HB	2:B:221:LEU:HD13	1.99	0.44
1:A:250:ILE:HD12	1:A:253:GLU:HB2	1.99	0.44
1:A:294:TYR:CD2	1:A:325:MET:HG2	2.53	0.44
1:A:164:PRO:HG2	1:A:174:ALA:HB3	2.00	0.43
2:B:99:ASP:HB3	2:B:104:CYS:HB3	2.00	0.43
1:A:157:ASP:O	1:A:183:ARG:HB2	2.19	0.43
2:B:41:ARG:HD2	2:B:77:LYS:O	2.19	0.42
1:A:359:LYS:HB2	1:A:359:LYS:HE2	1.75	0.42
1:A:337:TYR:O	1:A:341:ILE:HG13	2.19	0.42
1:A:272:ALA:HB1	1:A:276[A]:GLU:HB2	2.01	0.42
1:A:254:ARG:HH12	8:A:1383:GOL:C3	2.33	0.42
1:A:239:SER:HB3	1:A:247:VAL:CG1	2.49	0.42
1:A:145:SER:OG	1:A:147:ARG:HD2	2.20	0.42
1:A:148:THR:OG1	10:A:1471:HOH:O	2.21	0.41
3:C:431:ARG:NH1	10:C:381:HOH:O	2.53	0.41
1:A:106:THR:HB	1:A:137:GLN:HG3	2.03	0.41
1:A:78:ASN:ND2	1:A:81:ASP:OD2	2.54	0.41
1:A:113[A]:LYS:NZ	1:A:117:GLU:OE2	2.43	0.41
1:A:318:THR:HA	1:A:327:ILE:CD1	2.50	0.41

There are no symmetry-related clashes.

5.3 Torsion angles

5.3.1 Protein backbone ⓘ

In the following table, the Percentiles column shows the percent Ramachandran outliers of the chain as a percentile score with respect to all X-ray entries followed by that with respect to entries of similar resolution. The Analysed column shows the number of residues for which the backbone conformation was analysed, and the total number of residues.

Mol	Chain	Analysed	Favoured	Allowed	Outliers	Percentiles	
1	A	375/375 (100%)	369 (98%)	6 (2%)	0	100	100
2	B	262/260 (101%)	256 (98%)	6 (2%)	0	100	100
3	C	15/29 (52%)	15 (100%)	0	0	100	100
All	All	652/664 (98%)	640 (98%)	12 (2%)	0	100	100

There are no Ramachandran outliers to report.

5.3.2 Protein sidechains ⓘ

In the following table, the Percentiles column shows the percent sidechain outliers of the chain as a percentile score with respect to all X-ray entries followed by that with respect to entries of similar resolution. The Analysed column shows the number of residues for which the sidechain conformation was analysed, and the total number of residues.

Mol	Chain	Analysed	Rotameric	Outliers	Percentiles	
1	A	321/317 (101%)	306 (95%)	15 (5%)	36	32
2	B	233/229 (102%)	221 (95%)	12 (5%)	32	28
3	C	14/22 (64%)	10 (71%)	4 (29%)	0	0
All	All	568/568 (100%)	537 (94%)	31 (6%)	35	25

All (31) residues with a non-rotameric sidechain are listed below:

Mol	Chain	Res	Type
1	A	128[A]	ASN
1	A	128[B]	ASN
1	A	147	ARG
1	A	185	LEU
1	A	232	SER
1	A	244[A]	ASP
1	A	244[B]	ASP
1	A	250	ILE
1	A	271	SER
1	A	288[A]	ASP
1	A	288[B]	ASP
1	A	300[A]	SER
1	A	300[B]	SER
1	A	334	GLU
1	A	359	LYS
2	B	1	LEU
2	B	2	LYS
2	B	9	ARG
2	B	36	LEU
2	B	98	ASP
2	B	101	CYS
2	B	125	VAL
2	B	139	ASP
2	B	156	GLN
2	B	221	LEU

Continued on next page...

Continued from previous page...

Mol	Chain	Res	Type
2	B	247	LEU
2	B	260	THR
3	C	431	ARG
3	C	434	LEU
3	C	435	LEU
3	C	442	ILE

Some sidechains can be flipped to improve hydrogen bonding and reduce clashes. All (4) such sidechains are listed below:

Mol	Chain	Res	Type
1	A	92	ASN
1	A	137	GLN
2	B	155	GLN
2	B	161	ASN

5.3.3 RNA ⓘ

There are no RNA chains in this entry.

5.4 Non-standard residues in protein, DNA, RNA chains ⓘ

1 non-standard protein/DNA/RNA residue is modelled in this entry.

In the following table, the Counts columns list the number of bonds (or angles) for which Mogul statistics could be retrieved, the number of bonds (or angles) that are observed in the model and the number of bonds (or angles) that are defined in the chemical component dictionary. The Link column lists molecule types, if any, to which the group is linked. The Z score for a bond length (or angle) is the number of standard deviations the observed value is removed from the expected value. A bond length (or angle) with $|Z| > 2$ is considered an outlier worth inspection. RMSZ is the root-mean-square of all Z scores of the bond lengths (or angles).

Mol	Type	Chain	Res	Link	Bond lengths			Bond angles		
					Counts	RMSZ	$\# Z > 2$	Counts	RMSZ	$\# Z > 2$
1	HIC	A	73	1	11,11,12	5.45	3 (27%)	12,14,16	1.25	0

In the following table, the Chirals column lists the number of chiral outliers, the number of chiral centers analysed, the number of these observed in the model and the number defined in the chemical component dictionary. Similar counts are reported in the Torsion and Rings columns. '-' means no outliers of that kind were identified.

Mol	Type	Chain	Res	Link	Chirals	Torsions	Rings
1	HIC	A	73	1	-	0/4/6/8	0/1/1/1

All (3) bond length outliers are listed below:

Mol	Chain	Res	Type	Atoms	Z	Observed(Å)	Ideal(Å)
1	A	73	HIC	O-C	17.61	1.23	1.11
1	A	73	HIC	CD2-CG	2.75	1.38	1.36
1	A	73	HIC	CA-C	2.33	1.52	1.48

There are no bond angle outliers.

There are no chirality outliers.

There are no torsion outliers.

There are no ring outliers.

5.5 Carbohydrates ⓘ

2 carbohydrates are modelled in this entry.

In the following table, the Counts columns list the number of bonds (or angles) for which Mogul statistics could be retrieved, the number of bonds (or angles) that are observed in the model and the number of bonds (or angles) that are defined in the chemical component dictionary. The Link column lists molecule types, if any, to which the group is linked. The Z score for a bond length (or angle) is the number of standard deviations the observed value is removed from the expected value. A bond length (or angle) with $|Z| > 2$ is considered an outlier worth inspection. RMSZ is the root-mean-square of all Z scores of the bond lengths (or angles).

Mol	Type	Chain	Res	Link	Bond lengths			Bond angles		
					Counts	RMSZ	# Z > 2	Counts	RMSZ	# Z > 2
4	NAG	B	270	2,4	12,14,15	0.60	0	15,19,21	1.46	3 (20%)
4	NAG	B	271	4	12,14,15	0.65	0	15,19,21	1.59	3 (20%)

In the following table, the Chirals column lists the number of chiral outliers, the number of chiral centers analysed, the number of these observed in the model and the number defined in the chemical component dictionary. Similar counts are reported in the Torsion and Rings columns. '-' means no outliers of that kind were identified.

Mol	Type	Chain	Res	Link	Chirals	Torsions	Rings
4	NAG	B	270	2,4	-	0/6/23/26	0/1/1/1
4	NAG	B	271	4	-	0/6/23/26	0/1/1/1

There are no bond length outliers.

All (6) bond angle outliers are listed below:

Mol	Chain	Res	Type	Atoms	Z	Observed(°)	Ideal(°)
4	B	270	NAG	O5-C5-C6	3.18	110.32	106.98
4	B	271	NAG	O5-C5-C4	2.95	114.39	110.65
4	B	271	NAG	C3-C4-C5	2.94	115.46	110.20
4	B	271	NAG	O5-C5-C6	2.78	109.90	106.98
4	B	270	NAG	O4-C4-C3	-2.71	104.28	110.35
4	B	270	NAG	C3-C2-N2	-2.32	108.23	111.76

There are no chirality outliers.

There are no torsion outliers.

There are no ring outliers.

5.6 Ligand geometry ⓘ

Of 8 ligands modelled in this entry, 3 are monoatomic - leaving 5 for Mogul analysis.

In the following table, the Counts columns list the number of bonds (or angles) for which Mogul statistics could be retrieved, the number of bonds (or angles) that are observed in the model and the number of bonds (or angles) that are defined in the chemical component dictionary. The Link column lists molecule types, if any, to which the group is linked. The Z score for a bond length (or angle) is the number of standard deviations the observed value is removed from the expected value. A bond length (or angle) with $|Z| > 2$ is considered an outlier worth inspection. RMSZ is the root-mean-square of all Z scores of the bond lengths (or angles).

Mol	Type	Chain	Res	Link	Bond lengths			Bond angles		
					Counts	RMSZ	# $ Z > 2$	Counts	RMSZ	# $ Z > 2$
7	ATP	A	1380	5	33,33,33	1.32	4 (12%)	52,52,52	1.72	10 (19%)
8	GOL	A	1382	-	5,5,5	0.37	0	5,5,5	0.87	0
8	GOL	A	1383	-	5,5,5	0.35	0	5,5,5	0.92	0
9	FMT	B	1275	-	2,2,2	0.67	0	1,1,1	0.20	0
8	GOL	B	1384	-	5,5,5	0.31	0	5,5,5	1.31	0

In the following table, the Chirals column lists the number of chiral outliers, the number of chiral centers analysed, the number of these observed in the model and the number defined in the chemical component dictionary. Similar counts are reported in the Torsion and Rings columns. '-' means no outliers of that kind were identified.

Mol	Type	Chain	Res	Link	Chirals	Torsions	Rings
7	ATP	A	1380	5	-	0/22/38/38	0/1/3/3
8	GOL	A	1382	-	-	0/4/4/4	0/0/0/0
8	GOL	A	1383	-	-	0/4/4/4	0/0/0/0

Continued on next page...

Continued from previous page...

Mol	Type	Chain	Res	Link	Chirals	Torsions	Rings
9	FMT	B	1275	-	-	0/0/0/0	0/0/0/0
8	GOL	B	1384	-	-	0/4/4/4	0/0/0/0

All (4) bond length outliers are listed below:

Mol	Chain	Res	Type	Atoms	Z	Observed(Å)	Ideal(Å)
7	A	1380	ATP	C4-N9	-3.87	1.32	1.37
7	A	1380	ATP	PB-O3B	3.18	1.65	1.59
7	A	1380	ATP	C5-C4	3.10	1.47	1.40
7	A	1380	ATP	PB-O3A	2.16	1.63	1.59

All (10) bond angle outliers are listed below:

Mol	Chain	Res	Type	Atoms	Z	Observed(°)	Ideal(°)
7	A	1380	ATP	N3-C2-N1	-5.76	123.89	128.71
7	A	1380	ATP	N3-C4-N9	5.38	135.14	125.43
7	A	1380	ATP	O3A-PB-O3B	-3.28	94.99	101.66
7	A	1380	ATP	O4'-C1'-N9	3.14	111.36	108.44
7	A	1380	ATP	O4'-C1'-C2'	-3.10	102.02	106.77
7	A	1380	ATP	C8-N9-C4	2.95	109.15	106.90
7	A	1380	ATP	C5-C4-N3	-2.87	119.45	125.70
7	A	1380	ATP	C2-N1-C6	2.40	123.09	118.77
7	A	1380	ATP	O2B-PB-O1B	2.26	124.85	112.21
7	A	1380	ATP	O3G-PG-O2G	2.16	116.04	107.61

There are no chirality outliers.

There are no torsion outliers.

There are no ring outliers.

5.7 Other polymers ⓘ

There are no such residues in this entry.

5.8 Polymer linkage issues

There are no chain breaks in this entry.

6 Fit of model and data ⓘ

6.1 Protein, DNA and RNA chains ⓘ

In the following table, the column labelled ‘#RSRZ> 2’ contains the number (and percentage) of RSRZ outliers, followed by percent RSRZ outliers for the chain as percentile scores relative to all X-ray entries and entries of similar resolution. The OWAB column contains the minimum, median, 95th percentile and maximum values of the occupancy-weighted average B-factor per residue. The column labelled ‘Q< 0.9’ lists the number of (and percentage) of residues with an average occupancy less than 0.9.

Mol	Chain	Analysed	<RSRZ>	#RSRZ>2	OWAB(Å ²)	Q<0.9
1	A	361/375 (96%)	-0.11	11 (3%) 48 52	20, 30, 45, 61	0
2	B	260/260 (100%)	-0.26	0 100 100	25, 31, 43, 50	0
3	C	17/29 (58%)	0.79	1 (5%) 22 24	44, 47, 55, 55	0
All	All	638/664 (96%)	-0.15	12 (1%) 64 67	20, 31, 46, 61	0

All (12) RSRZ outliers are listed below:

Mol	Chain	Res	Type	RSRZ
1	A	365	ALA	5.1
1	A	5	THR	3.2
1	A	360	GLN	2.9
3	C	446	LYS	2.8
1	A	324	THR	2.5
1	A	243	PRO	2.4
1	A	359	LYS	2.4
1	A	246	GLN	2.3
1	A	363	ASP	2.3
1	A	247	VAL	2.2
1	A	362	TYR	2.1
1	A	201	VAL	2.0

6.2 Non-standard residues in protein, DNA, RNA chains ⓘ

In the following table, the Atoms column lists the number of modelled atoms in the group and the number defined in the chemical component dictionary. LLDF column lists the quality of electron density of the group with respect to its neighbouring residues in protein, DNA or RNA chains. The B-factors column lists the minimum, median, 95th percentile and maximum values of B factors of atoms in the group. The column labelled ‘Q< 0.9’ lists the number of atoms with occupancy less than 0.9.

Mol	Type	Chain	Res	Atoms	RSR	LLDF	B-factors(\AA^2)	Q<0.9
1	HIC	A	73	11/12	0.09	-1.15	28,30,40,41	0

6.3 Carbohydrates ⓘ

In the following table, the Atoms column lists the number of modelled atoms in the group and the number defined in the chemical component dictionary. LLDF column lists the quality of electron density of the group with respect to its neighbouring residues in protein, DNA or RNA chains. The B-factors column lists the minimum, median, 95th percentile and maximum values of B factors of atoms in the group. The column labelled 'Q< 0.9' lists the number of atoms with occupancy less than 0.9.

Mol	Type	Chain	Res	Atoms	RSR	LLDF	B-factors(\AA^2)	Q<0.9
4	NAG	B	271	14/15	0.26	2.65	54,59,64,64	0
4	NAG	B	270	14/15	0.17	2.40	37,43,50,53	0

6.4 Ligands ⓘ

In the following table, the Atoms column lists the number of modelled atoms in the group and the number defined in the chemical component dictionary. LLDF column lists the quality of electron density of the group with respect to its neighbouring residues in protein, DNA or RNA chains. The B-factors column lists the minimum, median, 95th percentile and maximum values of B factors of atoms in the group. The column labelled 'Q< 0.9' lists the number of atoms with occupancy less than 0.9.

Mol	Type	Chain	Res	Atoms	RSR	LLDF	B-factors(\AA^2)	Q<0.9
8	GOL	A	1382	6/6	0.20	11.26	57,62,64,68	0
8	GOL	B	1384	6/6	0.21	4.25	34,39,41,43	0
9	FMT	B	1275	3/3	0.15	3.42	44,44,47,48	0
8	GOL	A	1383	6/6	0.16	2.83	58,60,62,62	0
5	CA	A	1381	1/1	0.12	0.80	24,24,24,24	0
7	ATP	A	1380	31/31	0.13	0.34	22,25,27,28	0
5	CA	B	1273	1/1	0.07	-1.40	26,26,26,26	0
6	MG	B	1274	1/1	0.08	-1.71	28,28,28,28	0

6.5 Other polymers ⓘ

There are no such residues in this entry.