



Full wwPDB X-ray Structure Validation Report

Feb 26, 2014 – 03:25 PM GMT

PDB ID : 1A4R
Title : G12V MUTANT OF HUMAN PLACENTAL CDC42 GTPASE IN THE GDP FORM
Authors : Rudolph, M.G.; Vetter, I.R.; Wittinghofer, A.
Deposited on : 1998-02-02
Resolution : 2.50 Å(reported)

This is a full wwPDB validation report for a publicly released PDB entry.
We welcome your comments at validation@mail.wwpdb.org
A user guide is available at <http://wwpdb.org/ValidationPDFNotes.html>

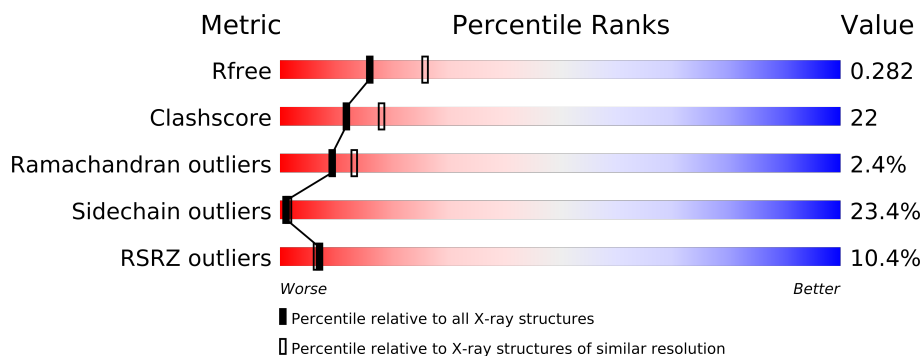
The following versions of software and data (see [references](#)) were used in the production of this report:

MolProbity : 4.02b-467
Mogul : 1.15 2013
Xtriage (Phenix) : dev-1323
EDS : stable22639
Percentile statistics : 21963
Refmac : 5.8.0049
CCP4 : 6.3.0 (Settle)
Ideal geometry (proteins) : Engh & Huber (2001)
Ideal geometry (DNA, RNA) : Parkinson et. al. (1996)
Validation Pipeline (wwPDB-VP) : stable22683

1 Overall quality at a glance

The reported resolution of this entry is 2.50 Å.

Percentile scores (ranging between 0-100) for global validation metrics of the entry are shown in the following graphic. The table shows the number of entries on which the scores are based.



Metric	Whole archive (#Entries)	Similar resolution (#Entries, resolution range(Å))
R_{free}	66092	2784 (2.50-2.50)
Clashscore	79885	3562 (2.50-2.50)
Ramachandran outliers	78287	3480 (2.50-2.50)
Sidechain outliers	78261	3482 (2.50-2.50)
RSRZ outliers	66119	2785 (2.50-2.50)

The table below summarises the geometric issues observed across the polymeric chains and their fit to the electron density. The red, orange, yellow and green segments on the lower bar indicate the fraction of residues that contain outliers for ≥ 3 , 2, 1 and 0 types of geometric quality criteria. The upper red bar (where present) indicates the fraction of residues that have poor fit to the electron density.

Mol	Chain	Length	Quality of chain
1	A	191	
1	B	191	

2 Entry composition

There are 5 unique types of molecules in this entry. The entry contains 3087 atoms, of which 0 are hydrogen and 0 are deuterium.

In the tables below, the ZeroOcc column contains the number of atoms modelled with zero occupancy, the AltConf column contains the number of residues with at least one atom in alternate conformation and the Trace column contains the number of residues modelled with at most 2 atoms.

- Molecule 1 is a protein called G25K GTP-BINDING PROTEIN.

Mol	Chain	Residues	Atoms					ZeroOcc	AltConf	Trace
1	A	190	Total	C	N	O	S	0	0	0
			1488	957	241	282	8			
1	B	190	Total	C	N	O	S	0	0	0
			1488	957	241	282	8			

There are 2 discrepancies between the modelled and reference sequences:

Chain	Residue	Modelled	Actual	Comment	Reference
A	12	VAL	GLY	ENGINEERED	UNP P60953
B	212	VAL	GLY	ENGINEERED	UNP P60953

- Molecule 2 is MAGNESIUM ION (three-letter code: MG) (formula: Mg).

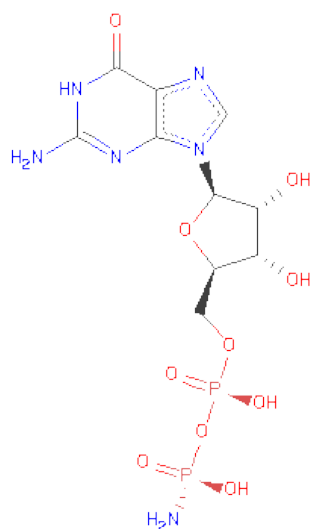
Mol	Chain	Residues	Atoms		ZeroOcc	AltConf
2	A	1	Total	Mg	0	0
			1	1		

- Molecule 3 is GUANOSINE-5'-DIPHOSPHATE (three-letter code: GDP) (formula: C₁₀H₁₅N₅O₁₁P₂).



Mol	Chain	Residues	Atoms					ZeroOcc	AltConf
3	A	1	Total	C	N	O	P	0	0
			28	10	5	11	2		

- Molecule 4 is AMINOPHOSPHONIC ACID-GUANYLATE ESTER (three-letter code: GNH) (formula: $C_{10}H_{16}N_6O_{10}P_2$).



Mol	Chain	Residues	Atoms					ZeroOcc	AltConf
4	B	1	Total	C	N	O	P	0	0
			28	10	6	10	2		

- Molecule 5 is water.

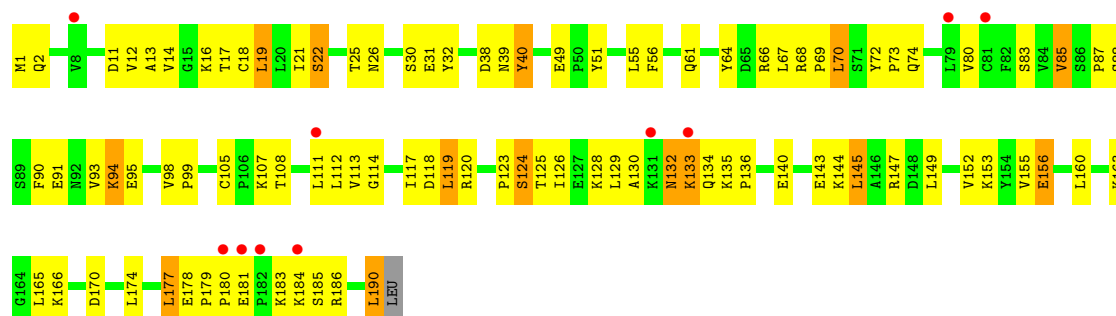
Mol	Chain	Residues	Atoms		ZeroOcc	AltConf
5	A	48	Total 48	O 48	0	0
5	B	6	Total 6	O 6	0	0

3 Residue-property plots

These plots are drawn for all protein, RNA and DNA chains in the entry. The first graphic for a chain summarises the proportions of errors displayed in the second graphic. The second graphic shows the sequence view annotated by issues in geometry and electron density. Residues are color-coded according to the number of geometric quality criteria for which they contain at least one outlier: green = 0, yellow = 1, orange = 2 and red = 3 or more. A red dot above a residue indicates a poor fit to the electron density ($RSRZ > 2$). Stretches of 2 or more consecutive residues without any outlier are shown as a green connector. Residues present in the sample, but not in the model, are shown in grey.

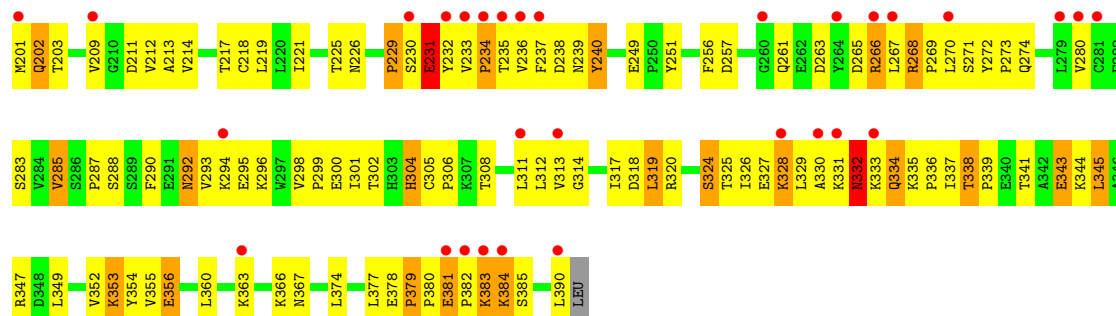
• Molecule 1: G25K GTP-BINDING PROTEIN

Chain A: 



• Molecule 1: G25K GTP-BINDING PROTEIN

Chain B: 



4 Data and refinement statistics

Property	Value	Source
Space group	P 41 21 2	Depositor
Cell constants a, b, c, α , β , γ	98.65Å 98.65Å 104.16Å 90.00° 90.00° 90.00°	Depositor
Resolution (Å)	30.00 – 2.50 29.88 – 2.50	Depositor EDS
% Data completeness (in resolution range)	95.9 (30.00-2.50) 96.0 (29.88-2.50)	Depositor EDS
R_{merge}	0.05	Depositor
R_{sym}	(Not available)	Depositor
$\langle I/\sigma(I) \rangle$ ¹	2.65 (at 2.51Å)	Xtriage
Refinement program	X-PLOR 3.851	Depositor
R, R_{free}	0.228 , 0.280 0.228 , 0.282	Depositor DCC
R_{free} test set	1738 reflections (9.87%)	DCC
Wilson B-factor (Å ²)	52.1	Xtriage
Anisotropy	0.205	Xtriage
Bulk solvent k_{sol} (e/Å ³), B_{sol} (Å ²)	0.32 , 44.5	EDS
Estimated twinning fraction	No twinning to report.	Xtriage
L-test for twinning	$\langle L \rangle = 0.51$, $\langle L^2 \rangle = 0.35$	Xtriage
Outliers	0 of 18210 reflections	Xtriage
F_o, F_c correlation	0.94	EDS
Total number of atoms	3087	wwPDB-VP
Average B, all atoms (Å ²)	57.0	wwPDB-VP

Xtriage's analysis on translational NCS is as follows: *The largest off-origin peak in the Patterson function is 4.77% of the height of the origin peak. No significant pseudotranslation is detected.*

¹Intensities estimated from amplitudes.

5 Model quality

5.1 Standard geometry

Bond lengths and bond angles in the following residue types are not validated in this section: GDP, GNH, MG

The Z score for a bond length (or angle) is the number of standard deviations the observed value is removed from the expected value. A bond length (or angle) with $|Z| > 5$ is considered an outlier worth inspection. RMSZ is the root-mean-square of all Z scores of the bond lengths (or angles).

Mol	Chain	Bond lengths		Bond angles	
		RMSZ	$\# Z > 5$	RMSZ	$\# Z > 5$
1	A	0.38	0/1521	0.63	0/2070
1	B	0.37	0/1521	0.60	0/2070
All	All	0.38	0/3042	0.62	0/4140

There are no bond length outliers.

There are no bond angle outliers.

There are no chirality outliers.

There are no planarity outliers.

5.2 Close contacts

In the following table, the Non-H and H(model) columns list the number of non-hydrogen atoms and hydrogen atoms in the chain respectively. The H(added) column lists the number of hydrogens added by MolProbity. The Clashes column lists the number of clashes within the asymmetric unit, and the number in parentheses is this value normalized per 1000 atoms of the molecule in the chain. The Symm-Clashes column gives symmetry related clashes, in the same way as for the Clashes column.

Mol	Chain	Non-H	H(model)	H(added)	Clashes	Symm-Clashes
1	A	1488	0	1518	52	1
1	B	1488	0	1515	81	0
2	A	1	0	0	0	0
3	A	28	0	12	0	0
4	B	28	0	14	3	0
5	A	48	0	0	1	0
5	B	6	0	0	0	0
All	All	3087	0	3059	132	1

Clashscore is defined as the number of clashes calculated for the entry per 1000 atoms (including

hydrogens) of the entry. The overall clashscore for this entry is 22.

All (132) close contacts within the same asymmetric unit are listed below.

Atom-1	Atom-2	Distance(Å)	Clash(Å)
1:B:221:ILE:HG21	1:B:229:PRO:HG3	1.50	0.91
1:B:213:ALA:H	4:B:400:GNH:HN32	1.18	0.89
1:B:298:VAL:HG21	1:B:349:LEU:HD13	1.53	0.88
1:B:293:VAL:O	1:B:298:VAL:HG23	1.87	0.74
1:A:190:LEU:N	1:A:190:LEU:HD23	2.02	0.74
1:A:190:LEU:H	1:A:190:LEU:HD23	1.53	0.73
1:A:117:ILE:HG21	1:A:156:GLU:HB2	1.71	0.71
1:B:317:ILE:HG21	1:B:356:GLU:HB2	1.74	0.70
1:A:120:ARG:O	1:A:126:ILE:HD11	1.90	0.70
1:A:132:ASN:O	1:A:133:LYS:HG2	1.90	0.70
1:A:135:LYS:HG2	1:A:136:PRO:HD2	1.73	0.69
1:B:268:ARG:HB3	1:B:269:PRO:HD3	1.74	0.69
1:B:273:PRO:O	1:B:274:GLN:HB2	1.92	0.69
1:B:325:THR:HA	1:B:328:LYS:HE3	1.75	0.68
1:B:221:ILE:CG2	1:B:229:PRO:HG3	2.23	0.68
1:B:381:GLU:O	1:B:383:LYS:N	2.28	0.66
1:A:17:THR:HG22	1:A:21:ILE:HD12	1.78	0.66
1:A:124:SER:O	1:A:128:LYS:HG3	1.96	0.66
1:B:304:HIS:H	1:B:304:HIS:HD1	1.45	0.65
1:B:298:VAL:HG21	1:B:349:LEU:CD1	2.26	0.65
1:B:238:ASP:CG	1:B:239:ASN:H	2.01	0.64
1:B:267:LEU:H	1:B:267:LEU:HD12	1.65	0.62
1:B:240:TYR:N	1:B:240:TYR:CD1	2.68	0.62
1:B:326:ILE:HA	1:B:329:LEU:HB2	1.81	0.61
1:A:73:PRO:O	1:A:74:GLN:HB2	1.99	0.61
1:B:320:ARG:HH22	1:B:356:GLU:CD	2.04	0.61
1:B:305:CYS:HB3	1:B:308:THR:OG1	2.01	0.61
1:B:332:ASN:O	1:B:334:GLN:HG2	2.02	0.59
1:A:87:PRO:HG2	1:A:134:GLN:HG2	1.84	0.59
1:A:68:ARG:HB3	1:A:69:PRO:HD3	1.84	0.59
1:A:120:ARG:HH22	1:A:156:GLU:CD	2.06	0.59
1:A:40:TYR:N	1:A:40:TYR:CD1	2.70	0.59
1:B:267:LEU:N	1:B:267:LEU:HD12	2.18	0.59
1:A:111:LEU:HD12	1:A:152:VAL:HB	1.85	0.58
1:A:61:GLN:HB2	1:A:64:TYR:CE1	2.39	0.58
1:B:311:LEU:HD12	1:B:352:VAL:HB	1.86	0.58
1:A:94:LYS:HG3	1:A:95:GLU:N	2.18	0.58
1:A:18:CYS:O	1:A:22:SER:HB2	2.04	0.57
1:B:229:PRO:O	1:B:233:VAL:HG22	2.04	0.57
1:A:2:GLN:HG2	1:A:51:TYR:CE2	2.40	0.57

Continued on next page...

Continued from previous page...

Atom-1	Atom-2	Distance(Å)	Clash(Å)
1:B:378:GLU:HB3	1:B:379:PRO:CD	2.35	0.56
1:B:325:THR:O	1:B:329:LEU:HD23	2.05	0.56
1:B:274:GLN:NE2	1:B:274:GLN:HA	2.21	0.55
1:B:325:THR:HA	1:B:328:LYS:CE	2.36	0.55
1:B:213:ALA:N	4:B:400:GNH:HN32	1.96	0.55
1:B:339:PRO:O	1:B:343:GLU:N	2.34	0.55
1:A:11:ASP:O	1:A:14:VAL:HG13	2.06	0.54
1:B:313:VAL:HA	1:B:355:VAL:O	2.07	0.54
1:B:345:LEU:CD2	1:B:349:LEU:HG	2.38	0.53
1:B:209:VAL:HG21	1:B:301:ILE:HD11	1.91	0.53
1:A:145:LEU:CD2	1:A:149:LEU:HG	2.39	0.53
1:B:202:GLN:NE2	1:B:203:THR:H	2.07	0.53
1:B:266:ARG:HB3	1:B:267:LEU:HD12	1.89	0.53
1:A:61:GLN:HB2	1:A:64:TYR:CD1	2.45	0.52
1:B:345:LEU:HD22	1:B:349:LEU:HG	1.92	0.52
1:B:287:PRO:HG2	1:B:334:GLN:NE2	2.24	0.52
1:A:118:ASP:OD2	1:A:119:LEU:HD13	2.10	0.52
1:B:298:VAL:HB	1:B:299:PRO:HD3	1.92	0.51
1:A:16:LYS:HA	1:A:19:LEU:HD23	1.92	0.51
1:B:324:SER:O	1:B:328:LYS:HE3	2.11	0.51
1:A:120:ARG:NH2	1:A:156:GLU:OE2	2.43	0.51
1:B:320:ARG:NH2	1:B:356:GLU:OE2	2.44	0.50
1:B:330:ALA:C	1:B:332:ASN:H	2.14	0.50
1:B:283:SER:OG	1:B:285:VAL:HG23	2.12	0.50
1:B:304:HIS:O	1:B:306:PRO:HD3	2.12	0.50
1:B:296:LYS:O	1:B:299:PRO:HD2	2.12	0.50
1:A:67:LEU:O	1:A:70:LEU:HB2	2.12	0.49
1:A:132:ASN:C	1:A:133:LYS:HG2	2.32	0.49
1:A:12:VAL:O	1:A:13:ALA:HB3	2.12	0.49
1:A:113:VAL:HA	1:A:155:VAL:O	2.12	0.49
1:A:80:VAL:HG11	1:A:93:VAL:HG13	1.95	0.49
1:B:212:VAL:O	1:B:213:ALA:HB3	2.13	0.48
1:B:296:LYS:C	1:B:299:PRO:HD2	2.33	0.48
1:B:318:ASP:OD2	1:B:319:LEU:HD13	2.13	0.48
1:A:72:TYR:N	1:A:73:PRO:CD	2.76	0.48
1:B:272:TYR:N	1:B:272:TYR:CD1	2.81	0.48
1:A:132:ASN:ND2	1:A:133:LYS:HE3	2.29	0.47
1:B:294:LYS:HG3	1:B:295:GLU:N	2.27	0.47
1:B:211:ASP:O	1:B:214:VAL:HG13	2.14	0.47
1:A:140:GLU:CD	1:A:140:GLU:H	2.17	0.47
1:B:339:PRO:O	1:B:343:GLU:HB2	2.14	0.47
1:A:39:ASN:HA	1:A:55:LEU:O	2.15	0.47

Continued on next page...

Continued from previous page...

Atom-1	Atom-2	Distance(Å)	Clash(Å)
1:B:217:THR:HG22	1:B:221:ILE:HD12	1.96	0.47
1:B:378:GLU:HB3	1:B:379:PRO:HD2	1.96	0.47
1:A:170:ASP:OD2	1:B:367:ASN:ND2	2.48	0.47
1:A:105:CYS:HB3	1:A:108:THR:OG1	2.15	0.47
1:A:98:VAL:N	1:A:99:PRO:CD	2.78	0.47
1:B:300:GLU:O	1:B:304:HIS:ND1	2.45	0.46
1:B:292:ASN:ND2	1:B:296:LYS:HB3	2.30	0.46
1:B:317:ILE:HD11	1:B:363:LYS:HD3	1.96	0.46
1:B:237:PHE:HB2	1:B:257:ASP:HB3	1.98	0.46
1:A:22:SER:HB3	1:A:165:LEU:HD21	1.98	0.46
1:B:295:GLU:O	1:B:299:PRO:HG2	2.15	0.46
1:A:83:SER:OG	1:A:85:VAL:HG23	2.16	0.46
1:A:90:PHE:CE1	1:A:145:LEU:HD12	2.52	0.45
1:A:117:ILE:HD11	1:A:163:LYS:HD3	1.97	0.45
1:A:73:PRO:HB3	1:A:190:LEU:CD2	2.47	0.45
1:B:317:ILE:CG2	1:B:356:GLU:HB2	2.42	0.45
1:A:145:LEU:HD22	1:A:149:LEU:HG	1.98	0.45
1:B:202:GLN:HB3	1:B:251:TYR:CD2	2.52	0.45
1:B:314:GLY:O	1:B:356:GLU:HA	2.15	0.45
1:B:353:LYS:HG3	1:B:354:TYR:N	2.32	0.44
1:B:256:PHE:N	1:B:256:PHE:CD1	2.86	0.44
1:A:25:THR:O	1:A:26:ASN:HB2	2.16	0.44
1:A:73:PRO:HB3	1:A:190:LEU:HD22	1.99	0.43
1:A:114:GLY:O	1:A:156:GLU:HA	2.18	0.43
1:B:338:THR:HG23	1:B:341:THR:OG1	2.18	0.43
1:B:234:PRO:C	1:B:236:VAL:H	2.20	0.43
1:B:335:LYS:HB3	1:B:336:PRO:HD2	1.99	0.43
1:A:186:ARG:NH1	5:A:1047:HOH:O	2.52	0.43
1:B:298:VAL:N	1:B:299:PRO:CD	2.82	0.42
1:A:130:ALA:HA	1:A:134:GLN:O	2.19	0.42
1:A:178:GLU:HB3	1:A:179:PRO:HD2	2.01	0.42
1:B:280:VAL:HG22	1:B:301:ILE:CD1	2.50	0.42
1:B:380:PRO:O	1:B:381:GLU:C	2.57	0.42
1:B:325:THR:HA	1:B:328:LYS:NZ	2.35	0.42
1:B:384:LYS:HZ2	1:B:384:LYS:HB2	1.85	0.42
1:A:56:PHE:N	1:A:56:PHE:CD1	2.88	0.41
1:B:292:ASN:O	1:B:292:ASN:ND2	2.31	0.41
1:B:274:GLN:NE2	1:B:274:GLN:CA	2.84	0.41
1:B:225:THR:O	1:B:226:ASN:HB2	2.20	0.41
1:A:177:LEU:HA	1:A:177:LEU:HD12	1.91	0.41
1:B:229:PRO:HB2	1:B:233:VAL:HG22	2.01	0.41
1:A:107:LYS:O	1:A:186:ARG:HG2	2.19	0.41

Continued on next page...

Continued from previous page...

Atom-1	Atom-2	Distance(Å)	Clash(Å)
1:B:218:CYS:SG	4:B:400:GNH:H2'	2.60	0.41
1:B:381:GLU:OE1	1:B:384:LYS:HE3	2.20	0.41
1:B:332:ASN:HB3	1:B:334:GLN:HG2	2.02	0.41
1:B:231:GLU:HB2	1:B:232:TYR:H	1.61	0.41
1:B:298:VAL:O	1:B:302:THR:HG23	2.22	0.40
1:B:290:PHE:CD2	1:B:337:ILE:HD12	2.56	0.40
1:B:328:LYS:HG3	1:B:328:LYS:H	1.61	0.40
1:A:61:GLN:HB2	1:A:64:TYR:HE1	1.84	0.40

All (1) symmetry-related close contacts are listed below. The label for Atom-2 includes the symmetry operator and encoded unit-cell translations to be applied.

Atom-1	Atom-2	Distance(Å)	Clash(Å)
1:A:64:TYR:OH	1:A:64:TYR:OH[7_555]	1.81	0.39

5.3 Torsion angles

5.3.1 Protein backbone ⓘ

In the following table, the Percentiles column shows the percent Ramachandran outliers of the chain as a percentile score with respect to all X-ray entries followed by that with respect to entries of similar resolution. The Analysed column shows the number of residues for which the backbone conformation was analysed, and the total number of residues.

Mol	Chain	Analysed	Favoured	Allowed	Outliers	Percentiles	
1	A	188/191 (98%)	171 (91%)	15 (8%)	2 (1%)	21	34
1	B	188/191 (98%)	159 (85%)	22 (12%)	7 (4%)	5	6
All	All	376/382 (98%)	330 (88%)	37 (10%)	9 (2%)	9	13

All (9) Ramachandran outliers are listed below:

Mol	Chain	Res	Type
1	B	332	ASN
1	B	382	PRO
1	A	180	PRO
1	B	231	GLU
1	A	123	PRO
1	B	234	PRO
1	B	268	ARG
1	B	379	PRO

Continued on next page...

Continued from previous page...

Mol	Chain	Res	Type
1	B	229	PRO

5.3.2 Protein sidechains ⓘ

In the following table, the Percentiles column shows the percent sidechain outliers of the chain as a percentile score with respect to all X-ray entries followed by that with respect to entries of similar resolution. The Analysed column shows the number of residues for which the sidechain conformation was analysed, and the total number of residues.

Mol	Chain	Analysed	Rotameric	Outliers	Percentiles	
1	A	171/172 (99%)	134 (78%)	37 (22%)	1	2
1	B	171/172 (99%)	128 (75%)	43 (25%)	1	1
All	All	342/344 (99%)	262 (77%)	80 (23%)	1	1

All (80) residues with a non-rotameric sidechain are listed below:

Mol	Chain	Res	Type
1	A	1	MET
1	A	19	LEU
1	A	22	SER
1	A	30	SER
1	A	31	GLU
1	A	32	TYR
1	A	38	ASP
1	A	40	TYR
1	A	49	GLU
1	A	66	ARG
1	A	70	LEU
1	A	85	VAL
1	A	88	SER
1	A	91	GLU
1	A	94	LYS
1	A	112	LEU
1	A	119	LEU
1	A	124	SER
1	A	125	THR
1	A	129	LEU
1	A	132	ASN
1	A	133	LYS
1	A	143	GLU
1	A	144	LYS

Continued on next page...

Continued from previous page...

Mol	Chain	Res	Type
1	A	145	LEU
1	A	147	ARG
1	A	153	LYS
1	A	156	GLU
1	A	160	LEU
1	A	166	LYS
1	A	174	LEU
1	A	177	LEU
1	A	181	GLU
1	A	183	LYS
1	A	184	LYS
1	A	185	SER
1	A	190	LEU
1	B	201	MET
1	B	202	GLN
1	B	219	LEU
1	B	230	SER
1	B	231	GLU
1	B	235	THR
1	B	240	TYR
1	B	249	GLU
1	B	261	GLN
1	B	263	ASP
1	B	265	ASP
1	B	266	ARG
1	B	270	LEU
1	B	271	SER
1	B	285	VAL
1	B	288	SER
1	B	292	ASN
1	B	304	HIS
1	B	312	LEU
1	B	319	LEU
1	B	324	SER
1	B	327	GLU
1	B	328	LYS
1	B	331	LYS
1	B	332	ASN
1	B	333	LYS
1	B	334	GLN
1	B	338	THR
1	B	343	GLU

Continued on next page...

Continued from previous page...

Mol	Chain	Res	Type
1	B	344	LYS
1	B	345	LEU
1	B	347	ARG
1	B	353	LYS
1	B	356	GLU
1	B	360	LEU
1	B	366	LYS
1	B	374	LEU
1	B	377	LEU
1	B	381	GLU
1	B	383	LYS
1	B	384	LYS
1	B	385	SER
1	B	390	LEU

Some sidechains can be flipped to improve hydrogen bonding and reduce clashes. All (7) such sidechains are listed below:

Mol	Chain	Res	Type
1	A	74	GLN
1	A	134	GLN
1	A	162	GLN
1	B	202	GLN
1	B	274	GLN
1	B	334	GLN
1	B	367	ASN

5.3.3 RNA ⓘ

There are no RNA chains in this entry.

5.4 Non-standard residues in protein, DNA, RNA chains ⓘ

There are no non-standard protein/DNA/RNA residues in this entry.

5.5 Carbohydrates ⓘ

There are no carbohydrates in this entry.

5.6 Ligand geometry

Of 3 ligands modelled in this entry, 1 is monoatomic - leaving 2 for Mogul analysis.

In the following table, the Counts columns list the number of bonds (or angles) for which Mogul statistics could be retrieved, the number of bonds (or angles) that are observed in the model and the number of bonds (or angles) that are defined in the chemical component dictionary. The Link column lists molecule types, if any, to which the group is linked. The Z score for a bond length (or angle) is the number of standard deviations the observed value is removed from the expected value. A bond length (or angle) with $|Z| > 2$ is considered an outlier worth inspection. RMSZ is the root-mean-square of all Z scores of the bond lengths (or angles).

Mol	Type	Chain	Res	Link	Bond lengths			Bond angles		
					Counts	RMSZ	# $ Z > 2$	Counts	RMSZ	# $ Z > 2$
3	GDP	A	200	2	30,30,30	2.00	9 (30%)	44,47,47	3.51	6 (13%)
4	GNH	B	400	-	30,30,30	2.61	9 (30%)	42,47,47	3.78	6 (14%)

In the following table, the Chirals column lists the number of chiral outliers, the number of chiral centers analysed, the number of these observed in the model and the number defined in the chemical component dictionary. Similar counts are reported in the Torsion and Rings columns. '-' means no outliers of that kind were identified.

Mol	Type	Chain	Res	Link	Chirals	Torsions	Rings
3	GDP	A	200	2	-	0/16/32/32	0/1/3/3
4	GNH	B	400	-	-	0/13/32/32	0/1/3/3

All (18) bond length outliers are listed below:

Mol	Chain	Res	Type	Atoms	Z	Observed(Å)	Ideal(Å)
4	B	400	GNH	C4-N3	6.51	1.46	1.35
4	B	400	GNH	C2-N3	5.27	1.40	1.33
3	A	200	GDP	C4-N3	5.15	1.44	1.35
4	B	400	GNH	C6-C5	4.74	1.49	1.41
4	B	400	GNH	C6-N1	4.73	1.45	1.37
4	B	400	GNH	PB-O1B	4.37	1.51	1.46
4	B	400	GNH	C2-N1	4.22	1.43	1.36
3	A	200	GDP	C6-N1	3.93	1.43	1.37
4	B	400	GNH	C4-N9	3.88	1.43	1.37
3	A	200	GDP	C6-C5	3.63	1.47	1.41
3	A	200	GDP	C2'-C1'	-3.23	1.48	1.53
3	A	200	GDP	C2-N3	3.06	1.37	1.33
3	A	200	GDP	C2-N1	2.98	1.41	1.36
4	B	400	GNH	O4'-C1'	2.88	1.45	1.41
4	B	400	GNH	PB-N3B	-2.68	1.48	1.60
3	A	200	GDP	O4'-C1'	2.61	1.45	1.41

Continued on next page...

Continued from previous page...

Mol	Chain	Res	Type	Atoms	Z	Observed(Å)	Ideal(Å)
3	A	200	GDP	C4-N9	2.38	1.41	1.37
3	A	200	GDP	PB-O3A	-2.30	1.56	1.60

All (12) bond angle outliers are listed below:

Mol	Chain	Res	Type	Atoms	Z	Observed(°)	Ideal(°)
4	B	400	GNH	C6-C5-N7	-22.00	131.18	134.14
3	A	200	GDP	C6-C5-N7	-21.70	131.22	134.14
4	B	400	GNH	O4'-C1'-N9	-6.62	102.28	108.44
4	B	400	GNH	C8-N9-C4	-4.05	103.81	106.90
3	A	200	GDP	C8-N9-C4	-3.50	104.23	106.90
4	B	400	GNH	C6-N1-C2	3.17	125.05	119.51
3	A	200	GDP	C6-N1-C2	3.06	124.86	119.51
4	B	400	GNH	C4'-O4'-C1'	2.96	112.97	109.75
3	A	200	GDP	O4'-C1'-N9	-2.82	105.81	108.44
3	A	200	GDP	O2B-PB-O1B	2.71	119.29	110.44
4	B	400	GNH	C2'-C3'-C4'	2.02	106.68	102.65
3	A	200	GDP	O3A-PA-O5'	-2.01	94.39	103.41

There are no chirality outliers.

There are no torsion outliers.

There are no ring outliers.

5.7 Other polymers ⓘ

There are no such residues in this entry.

5.8 Polymer linkage issues

There are no chain breaks in this entry.

6 Fit of model and data ⓘ

6.1 Protein, DNA and RNA chains ⓘ

In the following table, the column labelled ‘#RSRZ > 2’ contains the number (and percentage) of RSRZ outliers, followed by percent RSRZ outliers for the chain as percentile scores relative to all X-ray entries and entries of similar resolution. The OWAB column contains the minimum, median, 95th percentile and maximum values of the occupancy-weighted average B-factor per residue. The column labelled ‘Q < 0.9’ lists the number of (and percentage) of residues with an average occupancy less than 0.9.

Mol	Chain	Analysed	<RSRZ>	#RSRZ>2	OWAB(Å ²)	Q<0.9
1	A	190/191 (99%)	0.21	10 (5%) 25 26	26, 43, 84, 100	0
1	B	190/191 (99%)	0.83	30 (15%) 3 2	35, 63, 99, 100	0
All	All	380/382 (99%)	0.52	40 (10%) 7 6	26, 52, 98, 100	0

All (40) RSRZ outliers are listed below:

Mol	Chain	Res	Type	RSRZ
1	B	382	PRO	6.8
1	B	233	VAL	5.6
1	B	230	SER	4.9
1	B	234	PRO	4.6
1	B	236	VAL	4.5
1	B	237	PHE	4.5
1	B	264	TYR	4.0
1	A	180	PRO	4.0
1	B	235	THR	3.7
1	B	281	CYS	3.3
1	B	201	MET	3.3
1	B	267	LEU	3.3
1	B	279	LEU	3.3
1	B	232	TYR	3.3
1	A	131	LYS	3.2
1	A	181	GLU	3.1
1	B	280	VAL	3.0
1	B	330	ALA	3.0
1	B	294	LYS	2.8
1	B	390	LEU	2.8
1	B	363	LYS	2.8
1	A	184	LYS	2.7
1	B	333	LYS	2.6
1	A	111	LEU	2.5

Continued on next page...

Continued from previous page...

Mol	Chain	Res	Type	RSRZ
1	B	209	VAL	2.5
1	A	182	PRO	2.4
1	A	81	CYS	2.4
1	B	266	ARG	2.4
1	B	270	LEU	2.4
1	B	383	LYS	2.4
1	B	328	LYS	2.3
1	B	313	VAL	2.3
1	B	260	GLY	2.3
1	A	79	LEU	2.2
1	A	133	LYS	2.2
1	B	311	LEU	2.2
1	B	384	LYS	2.1
1	B	331	LYS	2.1
1	A	8	VAL	2.1
1	B	381	GLU	2.0

6.2 Non-standard residues in protein, DNA, RNA chains ⓘ

There are no non-standard protein/DNA/RNA residues in this entry.

6.3 Carbohydrates ⓘ

There are no carbohydrates in this entry.

6.4 Ligands ⓘ

In the following table, the Atoms column lists the number of modelled atoms in the group and the number defined in the chemical component dictionary. LLDF column lists the quality of electron density of the group with respect to its neighbouring residues in protein, DNA or RNA chains. The B-factors column lists the minimum, median, 95th percentile and maximum values of B factors of atoms in the group. The column labelled 'Q < 0.9' lists the number of atoms with occupancy less than 0.9.

Mol	Type	Chain	Res	Atoms	RSR	LLDF	B-factors(Å ²)	Q<0.9
4	GNH	B	400	28/28	0.14	-0.66	28,64,79,83	0
3	GDP	A	200	28/28	0.11	-0.86	23,34,41,46	0
2	MG	A	199	1/1	0.10	-1.84	39,39,39,39	0

6.5 Other polymers ⓘ

There are no such residues in this entry.