



# Full wwPDB X-ray Structure Validation Report

Feb 28, 2014 – 08:54 AM GMT

PDB ID : 3A4M  
Title : Crystal structure of archaeal O-phosphoseryl-tRNA(Sec)kinase  
Authors : Araiso, Y.; Ishitani, R.; Soll, D.; Nureki, O.  
Deposited on : 2009-07-10  
Resolution : 1.79 Å(reported)

This is a full wwPDB validation report for a publicly released PDB entry.  
We welcome your comments at [validation@mail.wwpdb.org](mailto:validation@mail.wwpdb.org)  
A user guide is available at <http://wwpdb.org/ValidationPDFNotes.html>

---

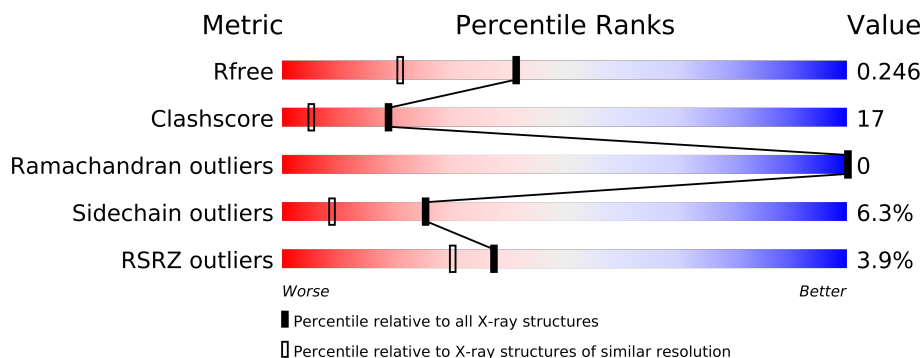
The following versions of software and data (see [references](#)) were used in the production of this report:

MolProbity : 4.02b-467  
Mogul : 1.15 2013  
Xtriage (Phenix) : dev-1323  
EDS : stable22639  
Percentile statistics : 21963  
Refmac : 5.8.0049  
CCP4 : 6.3.0 (Settle)  
Ideal geometry (proteins) : Engh & Huber (2001)  
Ideal geometry (DNA, RNA) : Parkinson et. al. (1996)  
Validation Pipeline (wwPDB-VP) : stable22683

# 1 Overall quality at a glance

The reported resolution of this entry is 1.79 Å.

Percentile scores (ranging between 0-100) for global validation metrics of the entry are shown in the following graphic. The table shows the number of entries on which the scores are based.



Metric	Whole archive (#Entries)	Similar resolution (#Entries, resolution range(Å))
$R_{free}$	66092	3513 (1.80-1.80)
Clashscore	79885	4461 (1.80-1.80)
Ramachandran outliers	78287	4404 (1.80-1.80)
Sidechain outliers	78261	4403 (1.80-1.80)
RSRZ outliers	66119	3515 (1.80-1.80)

The table below summarises the geometric issues observed across the polymeric chains and their fit to the electron density. The red, orange, yellow and green segments on the lower bar indicate the fraction of residues that contain outliers for  $\geq 3$ , 2, 1 and 0 types of geometric quality criteria. The upper red bar (where present) indicates the fraction of residues that have poor fit to the electron density.

Mol	Chain	Length	Quality of chain
1	A	260	
1	B	260	

The following table lists non-polymeric compounds that are outliers for geometric or electron-density-fit criteria:

Mol	Type	Chain	Res	Geometry	Electron density
5	EDO	A	261	-	X

## 2 Entry composition

There are 6 unique types of molecules in this entry. The entry contains 4320 atoms, of which 0 are hydrogen and 0 are deuterium.

In the tables below, the ZeroOcc column contains the number of atoms modelled with zero occupancy, the AltConf column contains the number of residues with at least one atom in alternate conformation and the Trace column contains the number of residues modelled with at most 2 atoms.

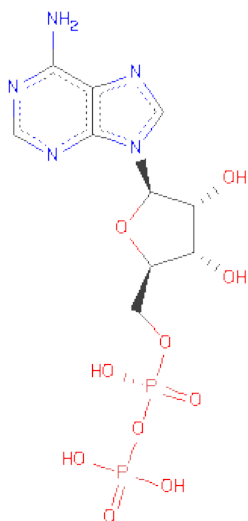
- Molecule 1 is a protein called L-seryl-tRNA(Sec) kinase.

Mol	Chain	Residues	Atoms					ZeroOcc	AltConf	Trace
1	A	236	Total	C	N	O	S	0	0	0
			1973	1284	325	361	3			
1	B	236	Total	C	N	O	S	0	4	0
			2008	1304	331	370	3			

There are 24 discrepancies between the modelled and reference sequences:

Chain	Residue	Modelled	Actual	Comment	Reference
A	1	MET	-	EXPRESSION TAG	UNP Q58933
A	2	GLY	-	EXPRESSION TAG	UNP Q58933
A	3	ASP	-	EXPRESSION TAG	UNP Q58933
A	4	ILE	-	EXPRESSION TAG	UNP Q58933
A	253	LEU	-	EXPRESSION TAG	UNP Q58933
A	254	GLU	-	EXPRESSION TAG	UNP Q58933
A	255	HIS	-	EXPRESSION TAG	UNP Q58933
A	256	HIS	-	EXPRESSION TAG	UNP Q58933
A	257	HIS	-	EXPRESSION TAG	UNP Q58933
A	258	HIS	-	EXPRESSION TAG	UNP Q58933
A	259	HIS	-	EXPRESSION TAG	UNP Q58933
A	260	HIS	-	EXPRESSION TAG	UNP Q58933
B	1	MET	-	EXPRESSION TAG	UNP Q58933
B	2	GLY	-	EXPRESSION TAG	UNP Q58933
B	3	ASP	-	EXPRESSION TAG	UNP Q58933
B	4	ILE	-	EXPRESSION TAG	UNP Q58933
B	253	LEU	-	EXPRESSION TAG	UNP Q58933
B	254	GLU	-	EXPRESSION TAG	UNP Q58933
B	255	HIS	-	EXPRESSION TAG	UNP Q58933
B	256	HIS	-	EXPRESSION TAG	UNP Q58933
B	257	HIS	-	EXPRESSION TAG	UNP Q58933
B	258	HIS	-	EXPRESSION TAG	UNP Q58933
B	259	HIS	-	EXPRESSION TAG	UNP Q58933
B	260	HIS	-	EXPRESSION TAG	UNP Q58933

- Molecule 2 is ADENOSINE-5'-DIPHOSPHATE (three-letter code: ADP) (formula:  $C_{10}H_{15}N_5O_{10}P_2$ ).



Mol	Chain	Residues	Atoms					ZeroOcc	AltConf
2	A	1	Total	C	N	O	P	0	0
			27	10	5	10	2		
2	B	1	Total	C	N	O	P	0	0
			27	10	5	10	2		

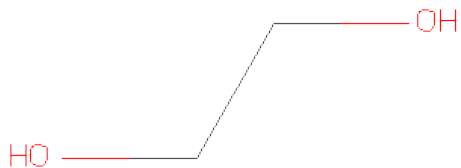
- Molecule 3 is MAGNESIUM ION (three-letter code: MG) (formula: Mg).

Mol	Chain	Residues	Atoms		ZeroOcc	AltConf
3	B	1	Total	Mg	0	0
			1	1		
3	A	1	Total	Mg	0	0
			1	1		

- Molecule 4 is IODIDE ION (three-letter code: IOD) (formula: I).

Mol	Chain	Residues	Atoms		ZeroOcc	AltConf
4	B	1	Total	I	0	0
			1	1		
4	A	1	Total	I	0	0
			1	1		

- Molecule 5 is 1,2-ETHANEDIOL (three-letter code: EDO) (formula:  $C_2H_6O_2$ ).



Mol	Chain	Residues	Atoms			ZeroOcc	AltConf
5	A	1	Total	C	O	0	0
			4	2	2		
5	B	1	Total	C	O	0	0
			4	2	2		
5	B	1	Total	C	O	0	0
			4	2	2		
5	B	1	Total	C	O	0	0
			4	2	2		

- Molecule 6 is water.

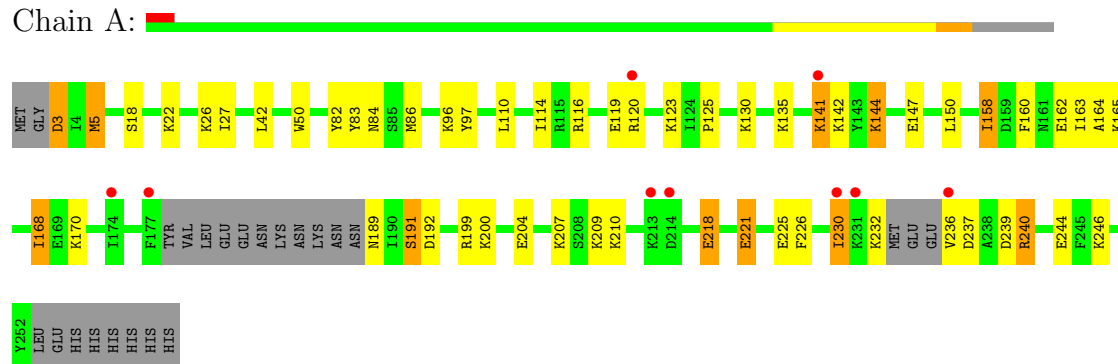
Mol	Chain	Residues	Atoms		ZeroOcc	AltConf
6	A	144	Total	O	0	0
			144	144		
6	B	121	Total	O	0	0
			121	121		

### 3 Residue-property plots

These plots are drawn for all protein, RNA and DNA chains in the entry. The first graphic for a chain summarises the proportions of errors displayed in the second graphic. The second graphic shows the sequence view annotated by issues in geometry and electron density. Residues are color-coded according to the number of geometric quality criteria for which they contain at least one outlier: green = 0, yellow = 1, orange = 2 and red = 3 or more. A red dot above a residue indicates a poor fit to the electron density ( $RSRZ > 2$ ). Stretches of 2 or more consecutive residues without any outlier are shown as a green connector. Residues present in the sample, but not in the model, are shown in grey.

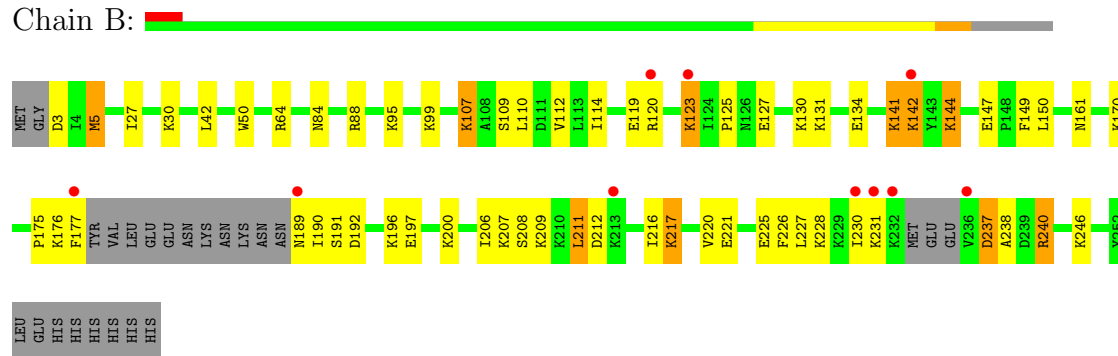
- Molecule 1: L-seryl-tRNA(Sec) kinase

Chain A:



- Molecule 1: L-seryl-tRNA(Sec) kinase

Chain B:



## 4 Data and refinement statistics

Property	Value	Source
Space group	P 1 21 1	Depositor
Cell constants a, b, c, $\alpha$ , $\beta$ , $\gamma$	58.16Å 74.52Å 64.82Å 90.00° 113.37° 90.00°	Depositor
Resolution (Å)	46.50 – 1.79 46.50 – 1.79	Depositor EDS
% Data completeness (in resolution range)	98.4 (46.50-1.79) 98.5 (46.50-1.79)	Depositor EDS
$R_{merge}$	(Not available)	Depositor
$R_{sym}$	(Not available)	Depositor
$\langle I/\sigma(I) \rangle$ <sup>1</sup>	2.97 (at 1.79Å)	Xtriage
Refinement program	PHENIX (phenix.refine)	Depositor
R, $R_{free}$	0.209 , 0.253 0.205 , 0.246	Depositor DCC
$R_{free}$ test set	2352 reflections (5.00%)	DCC
Wilson B-factor (Å <sup>2</sup> )	22.7	Xtriage
Anisotropy	0.289	Xtriage
Bulk solvent $k_{sol}$ (e/Å <sup>3</sup> ), $B_{sol}$ (Å <sup>2</sup> )	0.38 , 48.0	EDS
Estimated twinning fraction	No twinning to report.	Xtriage
L-test for twinning	$\langle  L  \rangle = 0.48$ , $\langle L^2 \rangle = 0.30$	Xtriage
Outliers	0 of 47063 reflections	Xtriage
$F_o, F_c$ correlation	0.94	EDS
Total number of atoms	4320	wwPDB-VP
Average B, all atoms (Å <sup>2</sup> )	28.0	wwPDB-VP

Xtriage's analysis on translational NCS is as follows: *The largest off-origin peak in the Patterson function is 7.05% of the height of the origin peak. No significant pseudotranslation is detected.*

<sup>1</sup>Intensities estimated from amplitudes.

## 5 Model quality ⓘ

### 5.1 Standard geometry ⓘ

Bond lengths and bond angles in the following residue types are not validated in this section: MG, IOD, EDO, ADP

The Z score for a bond length (or angle) is the number of standard deviations the observed value is removed from the expected value. A bond length (or angle) with  $|Z| > 5$  is considered an outlier worth inspection. RMSZ is the root-mean-square of all Z scores of the bond lengths (or angles).

Mol	Chain	Bond lengths		Bond angles	
		RMSZ	$\# Z  > 5$	RMSZ	$\# Z  > 5$
1	A	1.09	1/2003 (0.0%)	0.98	3/2678 (0.1%)
1	B	0.96	0/2041	0.91	2/2728 (0.1%)
All	All	1.03	1/4044 (0.0%)	0.94	5/5406 (0.1%)

All (1) bond length outliers are listed below:

Mol	Chain	Res	Type	Atoms	Z	Observed(Å)	Ideal(Å)
1	A	218	GLU	CG-CD	6.61	1.61	1.51

All (5) bond angle outliers are listed below:

Mol	Chain	Res	Type	Atoms	Z	Observed(°)	Ideal(°)
1	A	3	ASP	CB-CG-OD1	-7.15	111.87	118.30
1	B	3	ASP	CB-CG-OD1	-7.03	111.98	118.30
1	A	116	ARG	NE-CZ-NH1	-6.65	116.97	120.30
1	A	5	MET	CG-SD-CE	-5.71	91.06	100.20
1	B	5	MET	CG-SD-CE	-5.45	91.48	100.20

There are no chirality outliers.

There are no planarity outliers.

### 5.2 Close contacts ⓘ

In the following table, the Non-H and H(model) columns list the number of non-hydrogen atoms and hydrogen atoms in the chain respectively. The H(added) column lists the number of hydrogens added by MolProbity. The Clashes column lists the number of clashes within the asymmetric unit, and the number in parentheses is this value normalized per 1000 atoms of the molecule in the chain. The Symm-Clashes column gives symmetry related clashes, in the same way as for the Clashes column.



Mol	Chain	Non-H	H(model)	H(added)	Clashes	Symm-Clashes
1	A	1973	0	2088	74	0
1	B	2008	0	2116	68	0
2	A	27	0	12	1	0
2	B	27	0	12	0	0
3	A	1	0	0	0	0
3	B	1	0	0	0	0
4	A	1	0	0	0	0
4	B	1	0	0	3	0
5	A	4	0	6	0	0
5	B	12	0	18	5	0
6	A	144	0	0	11	0
6	B	121	0	0	12	0
All	All	4320	0	4252	138	0

Clashscore is defined as the number of clashes calculated for the entry per 1000 atoms (including hydrogens) of the entry. The overall clashscore for this entry is 17.

All (138) close contacts within the same asymmetric unit are listed below.

Atom-1	Atom-2	Distance(Å)	Clash(Å)
1:A:83:TYR:H	1:A:86:MET:CE	1.43	1.31
1:A:83:TYR:H	1:A:86:MET:HE3	1.29	0.95
1:A:83:TYR:N	1:A:86:MET:CE	2.29	0.94
1:B:131:LYS:HD3	4:B:402:IOD:I	2.39	0.93
1:B:123:LYS:HD3	1:B:123:LYS:H	1.33	0.92
1:B:190:ILE:HD11	1:B:238:ALA:HB2	1.52	0.92
1:A:18:SER:O	1:A:22:LYS:HD3	1.76	0.85
1:A:83:TYR:H	1:A:86:MET:HE2	1.43	0.84
1:A:26:LYS:HZ3	1:A:27:ILE:HD13	1.43	0.82
1:B:131:LYS:CD	4:B:402:IOD:I	2.98	0.81
1:A:5:MET:HE1	1:A:170:LYS:HD3	1.64	0.77
1:A:225:GLU:HG2	6:A:262:HOH:O	1.86	0.76
1:A:226:PHE:O	1:A:230:ILE:HG23	1.88	0.73
1:A:83:TYR:HD2	1:A:86:MET:CE	2.02	0.71
1:A:125:PRO:HG3	1:A:207:LYS:HE2	1.73	0.71
1:A:26:LYS:NZ	1:A:27:ILE:HD13	2.05	0.70
1:A:135:LYS:NZ	6:A:393:HOH:O	2.23	0.70
1:B:120:ARG:O	1:B:123:LYS:HD2	1.92	0.69
1:A:96:LYS:HE2	1:A:97:TYR:CZ	2.28	0.69
1:B:206:ILE:HA	1:B:211:LEU:HD22	1.76	0.67
1:B:149:PHE:CE1	1:B:170:LYS:HD2	2.29	0.67
1:A:26:LYS:NZ	1:A:27:ILE:CD1	2.60	0.65
1:B:189:ASN:HD21	1:B:191:SER:HB3	1.61	0.65
1:B:212:ASP:O	1:B:216:ILE:HG13	1.97	0.64

*Continued on next page...*

*Continued from previous page...*

Atom-1	Atom-2	Distance(Å)	Clash(Å)
1:B:225[B]:GLU:O	1:B:228:LYS:HB2	1.97	0.64
1:A:50:TRP:CE3	1:A:204:GLU:HG3	2.33	0.64
1:A:83:TYR:N	1:A:86:MET:HE3	2.04	0.63
1:B:196:LYS:NZ	5:B:263:EDO:H21	2.13	0.63
1:A:83:TYR:CD2	1:A:86:MET:CE	2.80	0.63
1:A:120:ARG:HD3	2:A:301:ADP:H5'2	1.81	0.62
1:A:120:ARG:NH2	6:A:318:HOH:O	2.33	0.62
1:A:83:TYR:CD2	1:A:86:MET:HE2	2.33	0.62
1:B:190:ILE:CD1	1:B:238:ALA:HB2	2.28	0.62
1:B:131:LYS:HD2	4:B:402:IOD:I	2.70	0.62
1:B:197:GLU:OE2	5:B:263:EDO:H21	2.00	0.61
1:A:239:ASP:HB3	6:A:265:HOH:O	2.00	0.61
1:A:120:ARG:HB2	6:A:410:HOH:O	2.00	0.60
1:B:50:TRP:CZ2	1:B:200:LYS:HG2	2.36	0.60
1:A:3:ASP:HB3	6:A:332:HOH:O	2.02	0.59
1:B:88:ARG:HD3	6:B:354:HOH:O	2.02	0.59
1:A:83:TYR:HD2	1:A:86:MET:HE2	1.64	0.58
1:A:83:TYR:HB2	1:A:86:MET:HE2	1.85	0.58
1:A:26:LYS:HZ2	1:A:27:ILE:HD11	1.68	0.58
1:B:64:ARG:NH1	6:B:326:HOH:O	2.36	0.58
1:A:83:TYR:H	1:A:86:MET:HE1	1.60	0.57
1:B:95:LYS:HB2	1:B:177:PHE:CD2	2.40	0.57
1:A:221:GLU:HG3	6:A:273:HOH:O	2.04	0.57
1:A:83:TYR:CB	1:A:86:MET:HE2	2.34	0.57
1:A:141:LYS:HG3	1:A:142:LYS:HG3	1.87	0.57
1:B:196:LYS:HZ3	5:B:263:EDO:H21	1.69	0.57
1:B:147:GLU:CG	6:B:306:HOH:O	2.52	0.57
1:A:82:TYR:N	1:A:86:MET:HE3	2.20	0.57
1:B:5:MET:HE1	1:B:170:LYS:HD3	1.87	0.57
1:B:99:LYS:HB3	6:B:299:HOH:O	2.04	0.57
1:A:230:ILE:O	1:A:230:ILE:HD12	2.06	0.56
1:B:217:LYS:O	1:B:217:LYS:HD3	2.06	0.56
1:A:5:MET:CE	1:A:170:LYS:HD3	2.36	0.56
1:A:189:ASN:HD22	1:A:192:ASP:H	1.52	0.56
1:A:42:LEU:HG	1:B:42:LEU:HD11	1.87	0.55
1:B:246:LYS:NZ	6:B:360:HOH:O	2.38	0.55
1:B:30:LYS:NZ	6:B:363:HOH:O	2.40	0.54
1:B:221:GLU:O	1:B:225[A]:GLU:HG3	2.07	0.54
1:B:5:MET:CE	1:B:170:LYS:HD3	2.38	0.54
1:B:147:GLU:OE1	6:B:306:HOH:O	2.18	0.54
1:B:141:LYS:HG3	1:B:142:LYS:HD2	1.90	0.54
1:A:110:LEU:O	1:A:114:ILE:HG12	2.07	0.54

*Continued on next page...*

*Continued from previous page...*

Atom-1	Atom-2	Distance(Å)	Clash(Å)
1:A:22:LYS:HD2	1:A:22:LYS:N	2.24	0.53
1:A:42:LEU:HG	1:B:42:LEU:CD1	2.37	0.53
1:B:227:LEU:O	1:B:231:LYS:HD2	2.09	0.53
1:B:144:LYS:H	5:B:262:EDO:H21	1.74	0.53
1:B:189:ASN:HD22	1:B:192:ASP:H	1.57	0.53
1:A:237:ASP:OD1	1:A:240:ARG:HB2	2.09	0.53
1:A:26:LYS:HZ2	1:A:27:ILE:CD1	2.21	0.52
1:B:123:LYS:N	1:B:123:LYS:HD3	2.13	0.52
1:B:209:LYS:HB3	1:B:211:LEU:HD13	1.90	0.52
1:B:147:GLU:HG3	6:B:306:HOH:O	2.10	0.52
1:A:83:TYR:CD2	1:A:86:MET:HE1	2.45	0.51
1:B:141:LYS:HZ1	1:B:142:LYS:HE2	1.74	0.51
1:A:50:TRP:CZ2	1:A:200:LYS:HG2	2.46	0.51
1:A:164:ALA:O	1:A:168:ILE:HG23	2.11	0.51
1:B:226:PHE:O	1:B:230:ILE:HD13	2.11	0.51
1:A:120:ARG:CZ	6:A:318:HOH:O	2.59	0.51
1:B:141:LYS:NZ	1:B:142:LYS:HE2	2.26	0.50
1:B:225[A]:GLU:O	1:B:228:LYS:HB2	2.09	0.50
1:A:26:LYS:C	1:A:26:LYS:HD3	2.31	0.50
1:A:50:TRP:CH2	1:A:200:LYS:HG3	2.47	0.50
1:B:147:GLU:CD	6:B:306:HOH:O	2.49	0.50
1:B:189:ASN:ND2	1:B:192:ASP:H	2.10	0.50
1:A:50:TRP:CZ2	1:A:200:LYS:CG	2.95	0.50
1:B:125:PRO:HG3	1:B:207:LYS:HE2	1.94	0.50
1:A:230:ILE:C	1:A:230:ILE:HD12	2.32	0.49
1:A:236:VAL:N	6:A:338:HOH:O	2.44	0.49
1:B:237:ASP:OD1	1:B:240:ARG:HB3	2.12	0.49
1:B:27:ILE:HD11	1:B:161:ASN:HD22	1.77	0.48
1:A:158:ILE:CD1	1:A:163:ILE:HD12	2.44	0.48
1:A:141:LYS:HE3	1:A:142:LYS:HE3	1.96	0.48
1:B:27:ILE:HD11	1:B:161:ASN:HA	1.96	0.48
1:A:83:TYR:N	1:A:86:MET:HE2	2.13	0.47
1:A:158:ILE:HD12	1:A:163:ILE:HD12	1.97	0.47
1:A:82:TYR:N	1:A:86:MET:CE	2.78	0.47
1:A:189:ASN:HD22	1:A:192:ASP:N	2.13	0.47
1:A:3:ASP:N	6:A:296:HOH:O	2.46	0.47
1:B:130:LYS:O	1:B:134:GLU:HG3	2.14	0.47
1:A:246:LYS:NZ	6:A:390:HOH:O	2.45	0.46
1:B:107:LYS:HE3	1:B:107:LYS:HB2	1.52	0.46
1:B:127[A]:GLU:HA	1:B:130:LYS:HD2	1.98	0.45
1:A:189:ASN:HD21	1:A:191:SER:HB2	1.80	0.45
1:A:207:LYS:HD3	1:A:207:LYS:HA	1.54	0.45

*Continued on next page...*

*Continued from previous page...*

Atom-1	Atom-2	Distance(Å)	Clash(Å)
1:B:197:GLU:HA	1:B:197:GLU:OE1	2.16	0.45
1:B:149:PHE:CD1	1:B:170:LYS:HD2	2.51	0.45
1:A:162:GLU:HA	1:A:165:LYS:NZ	2.32	0.45
1:B:175:PRO:O	1:B:176:LYS:HG2	2.17	0.45
1:B:99:LYS:CB	6:B:299:HOH:O	2.63	0.45
1:B:99:LYS:O	1:B:177:PHE:HZ	2.00	0.44
1:A:83:TYR:HD2	1:A:86:MET:HE1	1.79	0.44
1:B:144:LYS:HB2	5:B:262:EDO:C1	2.47	0.44
1:A:158:ILE:CG1	1:A:160:PHE:CE2	3.00	0.44
1:A:135:LYS:HD2	1:A:135:LYS:N	2.33	0.43
1:A:232:LYS:HD2	1:A:232:LYS:HA	1.79	0.42
1:B:131:LYS:HD2	1:B:220:VAL:HG13	2.01	0.42
1:A:27:ILE:HG23	1:A:27:ILE:HD12	1.72	0.42
1:A:144:LYS:O	1:A:147:GLU:HG3	2.19	0.42
1:B:110:LEU:O	1:B:114:ILE:HG12	2.20	0.42
1:A:42:LEU:HG	1:B:42:LEU:HG	2.01	0.42
1:A:209:LYS:O	1:A:210:LYS:C	2.58	0.42
1:A:50:TRP:CZ2	1:A:200:LYS:HG3	2.55	0.42
1:A:42:LEU:HG	1:B:42:LEU:CG	2.50	0.42
1:B:237:ASP:H	1:B:240:ARG:NH2	2.18	0.41
1:B:27:ILE:HD11	1:B:161:ASN:ND2	2.35	0.41
1:B:209:LYS:CB	1:B:211:LEU:HD13	2.51	0.41
1:B:225[A]:GLU:CD	6:B:378:HOH:O	2.58	0.41
1:B:88:ARG:NH2	6:B:338:HOH:O	2.54	0.41
1:B:211:LEU:HD12	1:B:211:LEU:HA	1.92	0.41
1:A:240:ARG:CZ	1:A:244:GLU:OE1	2.69	0.41
1:B:109:SER:OG	1:B:112:VAL:HG23	2.20	0.41
1:B:120:ARG:HB2	1:B:123:LYS:HE2	2.03	0.40
1:A:165:LYS:HB2	1:A:165:LYS:HE3	1.72	0.40
1:A:158:ILE:HG13	1:A:158:ILE:O	2.21	0.40

There are no symmetry-related clashes.

## 5.3 Torsion angles

### 5.3.1 Protein backbone ⓘ

In the following table, the Percentiles column shows the percent Ramachandran outliers of the chain as a percentile score with respect to all X-ray entries followed by that with respect to entries of similar resolution. The Analysed column shows the number of residues for which the backbone conformation was analysed, and the total number of residues.

Mol	Chain	Analysed	Favoured	Allowed	Outliers	Percentiles	
1	A	230/260 (88%)	227 (99%)	3 (1%)	0	100	100
1	B	234/260 (90%)	230 (98%)	4 (2%)	0	100	100
All	All	464/520 (89%)	457 (98%)	7 (2%)	0	100	100

There are no Ramachandran outliers to report.

### 5.3.2 Protein sidechains ⓘ

In the following table, the Percentiles column shows the percent sidechain outliers of the chain as a percentile score with respect to all X-ray entries followed by that with respect to entries of similar resolution. The Analysed column shows the number of residues for which the sidechain conformation was analysed, and the total number of residues.

Mol	Chain	Analysed	Rotameric	Outliers	Percentiles	
1	A	223/246 (91%)	208 (93%)	15 (7%)	23	7
1	B	227/246 (92%)	214 (94%)	13 (6%)	29	11
All	All	450/492 (92%)	422 (94%)	28 (6%)	25	9

All (28) residues with a non-rotameric sidechain are listed below:

Mol	Chain	Res	Type
1	A	84	ASN
1	A	119	GLU
1	A	123	LYS
1	A	130	LYS
1	A	141	LYS
1	A	144	LYS
1	A	150	LEU
1	A	158	ILE
1	A	168	ILE
1	A	191	SER
1	A	199	ARG
1	A	218	GLU
1	A	221	GLU
1	A	230	ILE
1	A	240	ARG
1	B	84	ASN
1	B	107	LYS
1	B	119	GLU
1	B	123	LYS

*Continued on next page...*

*Continued from previous page...*

Mol	Chain	Res	Type
1	B	141	LYS
1	B	142	LYS
1	B	144	LYS
1	B	150	LEU
1	B	208	SER
1	B	211	LEU
1	B	217	LYS
1	B	237	ASP
1	B	240	ARG

Some sidechains can be flipped to improve hydrogen bonding and reduce clashes. All (11) such sidechains are listed below:

Mol	Chain	Res	Type
1	A	31	ASN
1	A	32	ASN
1	A	98	ASN
1	A	189	ASN
1	A	250	ASN
1	B	31	ASN
1	B	32	ASN
1	B	98	ASN
1	B	161	ASN
1	B	189	ASN
1	B	250	ASN

### 5.3.3 RNA ⓘ

There are no RNA chains in this entry.

## 5.4 Non-standard residues in protein, DNA, RNA chains ⓘ

There are no non-standard protein/DNA/RNA residues in this entry.

## 5.5 Carbohydrates ⓘ

There are no carbohydrates in this entry.

## 5.6 Ligand geometry

Of 10 ligands modelled in this entry, 4 are monoatomic - leaving 6 for Mogul analysis.

In the following table, the Counts columns list the number of bonds (or angles) for which Mogul statistics could be retrieved, the number of bonds (or angles) that are observed in the model and the number of bonds (or angles) that are defined in the chemical component dictionary. The Link column lists molecule types, if any, to which the group is linked. The Z score for a bond length (or angle) is the number of standard deviations the observed value is removed from the expected value. A bond length (or angle) with  $|Z| > 2$  is considered an outlier worth inspection. RMSZ is the root-mean-square of all Z scores of the bond lengths (or angles).

Mol	Type	Chain	Res	Link	Bond lengths			Bond angles		
					Counts	RMSZ	# $ Z  > 2$	Counts	RMSZ	# $ Z  > 2$
5	EDO	A	261	-	3,3,3	0.43	0	2,2,2	1.24	0
2	ADP	A	301	3	29,29,29	1.55	4 (13%)	45,45,45	1.72	10 (22%)
5	EDO	B	261	-	3,3,3	0.71	0	2,2,2	0.53	0
5	EDO	B	262	-	3,3,3	0.33	0	2,2,2	1.54	0
5	EDO	B	263	-	3,3,3	0.43	0	2,2,2	1.15	0
2	ADP	B	301	3	29,29,29	1.17	2 (6%)	45,45,45	2.11	11 (24%)

In the following table, the Chirals column lists the number of chiral outliers, the number of chiral centers analysed, the number of these observed in the model and the number defined in the chemical component dictionary. Similar counts are reported in the Torsion and Rings columns. '-' means no outliers of that kind were identified.

Mol	Type	Chain	Res	Link	Chirals	Torsions	Rings
5	EDO	A	261	-	-	0/1/1/1	0/0/0/0
2	ADP	A	301	3	-	0/16/32/32	0/1/3/3
5	EDO	B	261	-	-	0/1/1/1	0/0/0/0
5	EDO	B	262	-	-	0/1/1/1	0/0/0/0
5	EDO	B	263	-	-	0/1/1/1	0/0/0/0
2	ADP	B	301	3	-	0/16/32/32	0/1/3/3

All (6) bond length outliers are listed below:

Mol	Chain	Res	Type	Atoms	Z	Observed(Å)	Ideal(Å)
2	B	301	ADP	C4-N9	-4.48	1.31	1.37
2	A	301	ADP	C4-N9	-3.55	1.32	1.37
2	A	301	ADP	C5-C4	3.25	1.47	1.40
2	A	301	ADP	C2'-C1'	-3.11	1.49	1.53
2	A	301	ADP	O4'-C1'	2.98	1.45	1.41
2	B	301	ADP	C5-C4	2.53	1.46	1.40

All (21) bond angle outliers are listed below:

Mol	Chain	Res	Type	Atoms	Z	Observed(°)	Ideal(°)
2	B	301	ADP	O4'-C1'-N9	-7.57	101.40	108.44
2	B	301	ADP	N3-C2-N1	-6.70	123.10	128.71
2	A	301	ADP	N3-C2-N1	-4.96	124.56	128.71
2	B	301	ADP	N3-C4-N9	4.30	133.20	125.43
2	A	301	ADP	N3-C4-N9	4.08	132.80	125.43
2	B	301	ADP	C1'-N9-C4	-3.04	121.38	126.64
2	A	301	ADP	C3'-C2'-C1'	3.03	105.65	100.91
2	A	301	ADP	O3B-PB-O1B	2.79	119.55	110.44
2	A	301	ADP	C4-C5-N7	-2.76	107.16	109.52
2	A	301	ADP	O4'-C1'-N9	-2.59	106.03	108.44
2	B	301	ADP	C5-C4-N3	-2.54	120.18	125.70
2	A	301	ADP	C5-C4-N3	-2.49	120.28	125.70
2	B	301	ADP	C3'-C2'-C1'	2.48	104.78	100.91
2	B	301	ADP	N6-C6-N1	2.42	124.12	119.36
2	B	301	ADP	PA-O3A-PB	-2.42	124.59	131.68
2	B	301	ADP	C2-N3-C4	2.35	120.69	114.01
2	A	301	ADP	O3'-C3'-C4'	-2.33	104.21	111.08
2	B	301	ADP	C4-C5-N7	-2.30	107.56	109.52
2	A	301	ADP	C8-N9-C4	2.25	108.62	106.90
2	B	301	ADP	C8-N9-C4	2.17	108.56	106.90
2	A	301	ADP	C2-N1-C6	2.12	122.59	118.77

There are no chirality outliers.

There are no torsion outliers.

There are no ring outliers.

## 5.7 Other polymers ⓘ

There are no such residues in this entry.

## 5.8 Polymer linkage issues

There are no chain breaks in this entry.



## 6 Fit of model and data ⓘ

### 6.1 Protein, DNA and RNA chains ⓘ

In the following table, the column labelled ‘#RSRZ> 2’ contains the number (and percentage) of RSRZ outliers, followed by percent RSRZ outliers for the chain as percentile scores relative to all X-ray entries and entries of similar resolution. The OWAB column contains the minimum, median, 95<sup>th</sup> percentile and maximum values of the occupancy-weighted average B-factor per residue. The column labelled ‘Q< 0.9’ lists the number of (and percentage) of residues with an average occupancy less than 0.9.

Mol	Chain	Analysed	<RSRZ>	#RSRZ>2	OWAB(Å <sup>2</sup> )	Q<0.9
1	A	236/260 (90%)	0.21	9 (3%) 38 31	12, 25, 47, 55	0
1	B	236/260 (90%)	0.26	10 (4%) 35 28	14, 26, 46, 55	0
All	All	472/520 (90%)	0.24	19 (4%) 37 29	12, 26, 47, 55	0

All (19) RSRZ outliers are listed below:

Mol	Chain	Res	Type	RSRZ
1	B	236	VAL	7.1
1	B	177	PHE	5.8
1	A	230	ILE	4.2
1	A	231	LYS	3.6
1	B	232	LYS	3.1
1	B	120	ARG	3.0
1	A	177	PHE	2.9
1	A	236	VAL	2.9
1	B	231	LYS	2.8
1	B	142	LYS	2.8
1	B	189	ASN	2.4
1	B	123	LYS	2.2
1	A	213	LYS	2.2
1	A	120	ARG	2.2
1	A	214	ASP	2.1
1	A	141	LYS	2.0
1	B	213	LYS	2.0
1	A	174	ILE	2.0
1	B	230	ILE	2.0

### 6.2 Non-standard residues in protein, DNA, RNA chains ⓘ

There are no non-standard protein/DNA/RNA residues in this entry.

### 6.3 Carbohydrates ⓘ

There are no carbohydrates in this entry.

### 6.4 Ligands ⓘ

In the following table, the Atoms column lists the number of modelled atoms in the group and the number defined in the chemical component dictionary. LLDF column lists the quality of electron density of the group with respect to its neighbouring residues in protein, DNA or RNA chains. The B-factors column lists the minimum, median, 95<sup>th</sup> percentile and maximum values of B factors of atoms in the group. The column labelled 'Q< 0.9' lists the number of atoms with occupancy less than 0.9.

Mol	Type	Chain	Res	Atoms	RSR	LLDF	B-factors(Å <sup>2</sup> )	Q<0.9
5	EDO	A	261	4/4	0.22	6.91	23,28,31,34	0
5	EDO	B	261	4/4	0.10	0.49	21,27,29,34	0
5	EDO	B	263	4/4	0.10	0.17	29,31,37,37	0
5	EDO	B	262	4/4	0.16	-0.16	36,41,41,45	0
2	ADP	B	301	27/27	0.09	-0.37	17,28,34,37	0
2	ADP	A	301	27/27	0.08	-0.51	15,26,33,35	0
3	MG	A	401	1/1	0.07	-0.69	22,22,22,22	0
4	IOD	B	402	1/1	0.08	-0.77	29,29,29,29	0
3	MG	B	401	1/1	0.05	-2.38	23,23,23,23	0
4	IOD	A	402	1/1	0.05	-5.30	29,29,29,29	0

### 6.5 Other polymers ⓘ

There are no such residues in this entry.