



Full wwPDB X-ray Structure Validation Report ⓘ

Feb 28, 2014 – 04:38 AM GMT

PDB ID : 4A4M
Title : Crystal structure of the light-activated constitutively active N2C, M257Y,D282C rhodopsin mutant in complex with a peptide resembling the C-terminus of the Galpha-protein subunit (GaCT)
Authors : Deupi, X.; Edwards, P.; Singhal, A.; Nickle, B.; Oprian, D.D.; Schertler, G.F.X.; Standfuss, J.
Deposited on : 2011-10-17
Resolution : 3.30 Å(reported)

This is a full wwPDB validation report for a publicly released PDB entry.
We welcome your comments at validation@mail.wwpdb.org
A user guide is available at <http://wwpdb.org/ValidationPDFNotes.html>

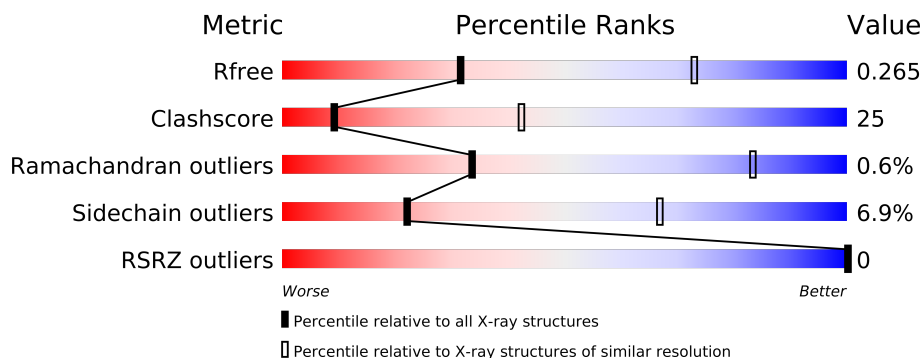
The following versions of software and data (see [references](#)) were used in the production of this report:

MolProbity : 4.02b-467
Mogul : 1.15 2013
Xtriage (Phenix) : dev-1323
EDS : stable22639
Percentile statistics : 21963
Refmac : 5.8.0049
CCP4 : 6.3.0 (Settle)
Ideal geometry (proteins) : Engh & Huber (2001)
Ideal geometry (DNA, RNA) : Parkinson et. al. (1996)
Validation Pipeline (wwPDB-VP) : stable22683

1 Overall quality at a glance

The reported resolution of this entry is 3.30 Å.

Percentile scores (ranging between 0-100) for global validation metrics of the entry are shown in the following graphic. The table shows the number of entries on which the scores are based.



Metric	Whole archive (#Entries)	Similar resolution (#Entries, resolution range(Å))
R_{free}	66092	1341 (3.40-3.20)
Clashscore	79885	1696 (3.40-3.20)
Ramachandran outliers	78287	1664 (3.40-3.20)
Sidechain outliers	78261	1662 (3.40-3.20)
RSRZ outliers	66119	1342 (3.40-3.20)

The table below summarises the geometric issues observed across the polymeric chains and their fit to the electron density. The red, orange, yellow and green segments on the lower bar indicate the fraction of residues that contain outliers for ≥ 3 , 2, 1 and 0 types of geometric quality criteria. The upper red bar (where present) indicates the fraction of residues that have poor fit to the electron density.

Mol	Chain	Length	Quality of chain
1	A	349	
2	B	11	

The following table lists non-polymeric compounds that are outliers for geometric or electron-density-fit criteria:

Mol	Type	Chain	Res	Geometry	Electron density
3	RET	A	401	-	X
4	ACT	A	1402	-	X
5	BOG	A	1403	-	X

2 Entry composition

There are 8 unique types of molecules in this entry. The entry contains 2781 atoms, of which 0 are hydrogen and 0 are deuterium.

In the tables below, the ZeroOcc column contains the number of atoms modelled with zero occupancy, the AltConf column contains the number of residues with at least one atom in alternate conformation and the Trace column contains the number of residues modelled with at most 2 atoms.

- Molecule 1 is a protein called RHODOPSIN.

Mol	Chain	Residues	Atoms					ZeroOcc	AltConf	Trace
1	A	327	Total	C	N	O	S	0	0	0
			2595	1729	399	440	27			

There are 4 discrepancies between the modelled and reference sequences:

Chain	Residue	Modelled	Actual	Comment	Reference
A	0	ACE	-	ACETYLATION	UNP P02699
A	2	CYS	ASN	ENGINEERED MUTATION	UNP P02699
A	257	TYR	MET	ENGINEERED MUTATION	UNP P02699
A	282	CYS	ASP	ENGINEERED MUTATION	UNP P02699

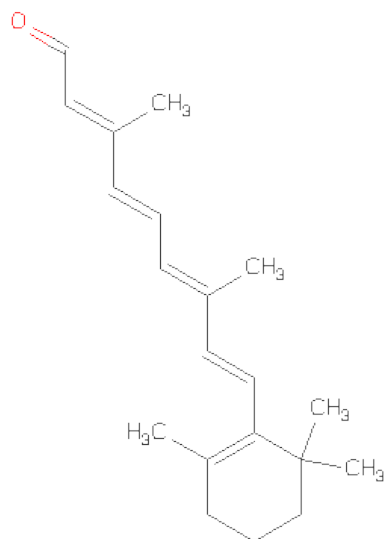
- Molecule 2 is a protein called GUANINE NUCLEOTIDE-BINDING PROTEIN G(T) SUB-UNIT ALPHA-3.

Mol	Chain	Residues	Atoms					ZeroOcc	AltConf	Trace
2	B	11	Total	C	N	O	S	0	0	0
			88	57	13	17	1			

There is a discrepancy between the modelled and reference sequences:

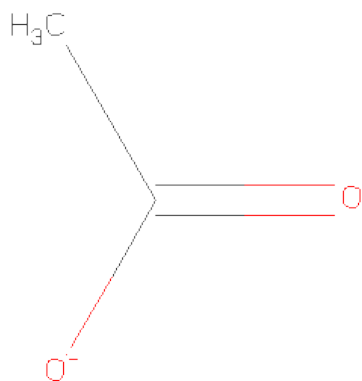
Chain	Residue	Modelled	Actual	Comment	Reference
B	341	LEU	LYS	ENGINEERED MUTATION	UNP P0C7Q4

- Molecule 3 is RETINAL (three-letter code: RET) (formula: C₂₀H₂₈O).



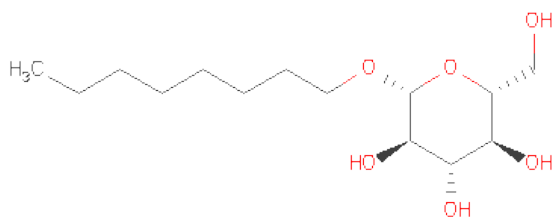
Mol	Chain	Residues	Atoms			ZeroOcc	AltConf
3	A	1	Total	C		0	0
			20	20			

- Molecule 4 is ACETATE ION (three-letter code: ACT) (formula: $C_2H_3O_2$).



Mol	Chain	Residues	Atoms			ZeroOcc	AltConf
4	A	1	Total	C	O	0	0
			4	2	2		

- Molecule 5 is SUGAR (B-OCTYLGLUCOSIDE) (three-letter code: BOG) (formula: $C_{14}H_{28}O_6$).



Mol	Chain	Residues	Atoms			ZeroOcc	AltConf
5	A	1	Total	C	O	0	0
			20	14	6		

- Molecule 6 is PALMITIC ACID (three-letter code: PLM) (formula: $\text{C}_{16}\text{H}_{32}\text{O}_2$).



Mol	Chain	Residues	Atoms			ZeroOcc	AltConf
6	A	1	Total	C	O	0	0
			17	16	1		

- Molecule 7 is a polymer of unknown type called SUGAR (2-MER).

Mol	Chain	Residues	Atoms				ZeroOcc	AltConf
7	A	2	Total	C	N	O	0	0
			28	16	2	10		

There are 4 discrepancies between the modelled and reference sequences:

Chain	Residue	Modelled	Actual	Comment	Reference
A	0	ACE	-	ACETYLATION	UNP P02699
A	2	CYS	ASN	ENGINEERED MUTATION	UNP P02699
A	257	TYR	MET	ENGINEERED MUTATION	UNP P02699
A	282	CYS	ASP	ENGINEERED MUTATION	UNP P02699

- Molecule 8 is water.

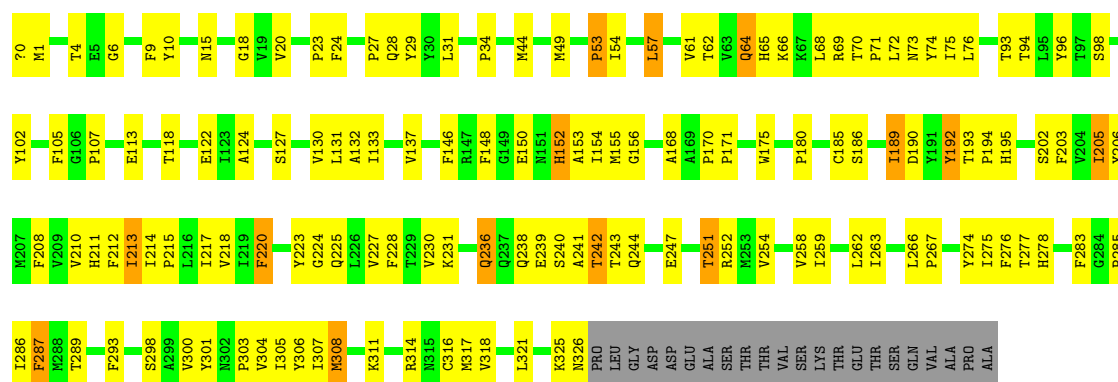
Mol	Chain	Residues	Atoms		ZeroOcc	AltConf
8	A	9	Total	O	0	0
			9	9		

3 Residue-property plots

These plots are drawn for all protein, RNA and DNA chains in the entry. The first graphic for a chain summarises the proportions of errors displayed in the second graphic. The second graphic shows the sequence view annotated by issues in geometry and electron density. Residues are color-coded according to the number of geometric quality criteria for which they contain at least one outlier: green = 0, yellow = 1, orange = 2 and red = 3 or more. A red dot above a residue indicates a poor fit to the electron density ($RSRZ > 2$). Stretches of 2 or more consecutive residues without any outlier are shown as a green connector. Residues present in the sample, but not in the model, are shown in grey.

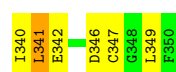
• Molecule 1: RHODOPSIN

Chain A: 



• Molecule 2: GUANINE NUCLEOTIDE-BINDING PROTEIN G(T) SUBUNIT ALPHA-3

Chain B: 



4 Data and refinement statistics

Property	Value	Source
Space group	H 3 2	Depositor
Cell constants a, b, c, α , β , γ	242.19Å 242.19Å 109.83Å 90.00° 90.00° 120.00°	Depositor
Resolution (Å)	45.77 – 3.30 45.77 – 3.30	Depositor EDS
% Data completeness (in resolution range)	94.6 (45.77-3.30) 70.8 (45.77-3.30)	Depositor EDS
R_{merge}	0.18	Depositor
R_{sym}	(Not available)	Depositor
$\langle I/\sigma(I) \rangle$ ¹	2.06 (at 3.32Å)	Xtriage
Refinement program	PHENIX (PHENIX.REFINE: 1.6.1.357)	Depositor
R, R_{free}	0.216 , 0.262 0.213 , 0.265	Depositor DCC
R_{free} test set	672 reflections (5.10%)	DCC
Wilson B-factor (Å ²)	73.1	Xtriage
Anisotropy	0.635	Xtriage
Bulk solvent k_{sol} (e/Å ³), B_{sol} (Å ²)	0.31 , 53.8	EDS
Estimated twinning fraction	No twinning to report.	Xtriage
L-test for twinning	$\langle L \rangle = 0.44$, $\langle L^2 \rangle = 0.26$	Xtriage
Outliers	0 of 13194 reflections	Xtriage
F_o, F_c correlation	0.89	EDS
Total number of atoms	2781	wwPDB-VP
Average B, all atoms (Å ²)	74.0	wwPDB-VP

Xtriage's analysis on translational NCS is as follows: *The largest off-origin peak in the Patterson function is 6.78% of the height of the origin peak. No significant pseudotranslation is detected.*

¹Intensities estimated from amplitudes.

5 Model quality

5.1 Standard geometry

Bond lengths and bond angles in the following residue types are not validated in this section: NAG, ACE, RET, ACT, PLM, BOG

The Z score for a bond length (or angle) is the number of standard deviations the observed value is removed from the expected value. A bond length (or angle) with $|Z| > 5$ is considered an outlier worth inspection. RMSZ is the root-mean-square of all Z scores of the bond lengths (or angles).

Mol	Chain	Bond lengths		Bond angles	
		RMSZ	$\# Z > 5$	RMSZ	$\# Z > 5$
1	A	0.59	0/2676	0.70	2/3647 (0.1%)
2	B	0.44	0/88	0.55	0/115
All	All	0.58	0/2764	0.70	2/3762 (0.1%)

There are no bond length outliers.

All (2) bond angle outliers are listed below:

Mol	Chain	Res	Type	Atoms	Z	Observed(°)	Ideal(°)
1	A	0	ACE	C-N-CA	14.80	158.70	121.70
1	A	0	ACE	O-C-N	-7.64	110.48	122.70

There are no chirality outliers.

There are no planarity outliers.

5.2 Close contacts

In the following table, the Non-H and H(model) columns list the number of non-hydrogen atoms and hydrogen atoms in the chain respectively. The H(added) column lists the number of hydrogens added by MolProbity. The Clashes column lists the number of clashes within the asymmetric unit, and the number in parentheses is this value normalized per 1000 atoms of the molecule in the chain. The Symm-Clashes column gives symmetry related clashes, in the same way as for the Clashes column.

Mol	Chain	Non-H	H(model)	H(added)	Clashes	Symm-Clashes
1	A	2595	0	2564	132	1
2	B	88	0	89	11	0
3	A	20	0	27	2	0
4	A	4	0	3	0	0
5	A	20	0	28	3	0

Continued on next page...

Continued from previous page...

Mol	Chain	Non-H	H(model)	H(added)	Clashes	Symm-Clashes
6	A	17	0	31	0	0
7	A	28	0	25	1	0
8	A	9	0	0	1	0
All	All	2781	0	2767	138	1

Clashscore is defined as the number of clashes calculated for the entry per 1000 atoms (including hydrogens) of the entry. The overall clashscore for this entry is 25.

All (138) close contacts within the same asymmetric unit are listed below.

Atom-1	Atom-2	Distance(Å)	Clash(Å)
1:A:93:THR:HG21	1:A:113:GLU:HG3	1.31	1.09
1:A:236:GLN:OE1	1:A:236:GLN:HA	1.48	1.08
1:A:210:VAL:HG12	1:A:211:HIS:CD2	2.10	0.87
1:A:214:ILE:HB	1:A:215:PRO:HD3	1.59	0.82
1:A:224:GLY:N	5:A:1403:BOG:H8'2	1.94	0.82
1:A:66:LYS:HA	1:A:69:ARG:NH1	1.97	0.80
1:A:304:VAL:HA	1:A:308:MET:HG3	1.66	0.77
1:A:189:ILE:HD13	1:A:203:PHE:HE2	1.51	0.75
1:A:286:ILE:O	1:A:289:THR:HB	1.86	0.75
1:A:24:PHE:CE2	1:A:107:PRO:HG3	2.22	0.73
1:A:75:ILE:HG21	1:A:131:LEU:HD13	1.71	0.73
1:A:28:GLN:HB3	1:A:31:LEU:HD12	1.71	0.72
1:A:213:ILE:HG22	1:A:217:ILE:HD12	1.71	0.72
1:A:236:GLN:CA	1:A:236:GLN:OE1	2.30	0.71
1:A:93:THR:HG21	1:A:113:GLU:CG	2.16	0.71
1:A:170:PRO:HB2	1:A:171:PRO:HD3	1.72	0.70
1:A:27:PRO:HB3	1:A:29:TYR:CE2	2.26	0.69
1:A:6:GLY:HA3	1:A:9:PHE:CE1	2.28	0.69
3:A:401:RET:H181	3:A:401:RET:C8	2.23	0.69
1:A:208:PHE:O	1:A:212:PHE:HB3	1.94	0.66
1:A:267:PRO:HB2	8:A:2009:HOH:O	1.95	0.66
1:A:242:THR:HG22	2:B:341:LEU:HD11	1.78	0.64
1:A:314:ARG:O	1:A:318:VAL:HG23	1.97	0.64
2:B:347:CYS:CB	2:B:349:LEU:HD12	2.27	0.64
1:A:240:SER:O	1:A:244:GLN:HG2	1.98	0.64
2:B:347:CYS:HB2	2:B:349:LEU:HD12	1.81	0.63
1:A:192:TYR:N	1:A:192:TYR:CD1	2.67	0.63
1:A:175:TRP:NE1	1:A:203:PHE:HB2	2.15	0.62
1:A:57:LEU:HD21	1:A:317:MET:HG2	1.81	0.62
1:A:65:HIS:HB2	1:A:68:LEU:HD12	1.82	0.62
1:A:305:ILE:HG22	1:A:306:TYR:CD1	2.35	0.61
1:A:76:LEU:HD13	1:A:307:ILE:HD13	1.82	0.60

Continued on next page...

Continued from previous page...

Atom-1	Atom-2	Distance(Å)	Clash(Å)
1:A:189:ILE:HD13	1:A:203:PHE:CE2	2.36	0.60
3:A:401:RET:H181	3:A:401:RET:H8	1.82	0.60
1:A:148:PHE:CE1	1:A:152:HIS:HB2	2.37	0.60
1:A:262:LEU:O	1:A:266:LEU:HB2	2.03	0.59
1:A:242:THR:CG2	2:B:341:LEU:CD1	2.79	0.59
1:A:210:VAL:CG1	1:A:211:HIS:CD2	2.83	0.59
1:A:66:LYS:HG3	1:A:69:ARG:HH12	1.67	0.59
1:A:242:THR:HG22	2:B:341:LEU:CD1	2.33	0.59
1:A:214:ILE:HB	1:A:215:PRO:CD	2.29	0.58
1:A:6:GLY:HA3	1:A:9:PHE:CZ	2.38	0.58
1:A:49:MET:O	1:A:53:PRO:HD2	2.03	0.58
1:A:283:PHE:HD2	1:A:287:PHE:CE1	2.22	0.57
1:A:259:ILE:O	1:A:263:ILE:HG13	2.05	0.56
1:A:72:LEU:HD23	1:A:148:PHE:CE2	2.40	0.56
1:A:242:THR:CG2	2:B:341:LEU:HD13	2.36	0.56
1:A:4:THR:HG21	1:A:20:VAL:HG11	1.87	0.56
1:A:230:VAL:HG22	2:B:340:ILE:HD12	1.86	0.56
1:A:132:ALA:HB2	1:A:223:TYR:CE2	2.42	0.55
1:A:266:LEU:HB3	1:A:267:PRO:HD3	1.90	0.54
1:A:230:VAL:HG22	2:B:340:ILE:CD1	2.37	0.54
1:A:224:GLY:H	5:A:1403:BOG:H8'2	1.69	0.54
1:A:311:LYS:HA	1:A:314:ARG:NH2	2.23	0.54
1:A:64:GLN:HB2	1:A:65:HIS:CD2	2.43	0.54
1:A:300:VAL:O	1:A:304:VAL:HG23	2.08	0.53
1:A:49:MET:O	1:A:53:PRO:CD	2.57	0.53
1:A:205:ILE:HD11	1:A:276:PHE:CZ	2.42	0.53
1:A:150:GLU:O	1:A:154:ILE:HG12	2.08	0.53
1:A:223:TYR:HB3	1:A:254:VAL:CG1	2.39	0.53
1:A:287:PHE:C	1:A:287:PHE:CD1	2.82	0.52
1:A:66:LYS:HG3	1:A:69:ARG:NH1	2.24	0.52
1:A:4:THR:HG21	7:A:1405:NAG:H82	1.91	0.52
1:A:64:GLN:N	1:A:64:GLN:HE21	2.09	0.51
1:A:175:TRP:CZ2	1:A:203:PHE:HA	2.46	0.51
1:A:241:ALA:O	1:A:244:GLN:HB2	2.11	0.51
1:A:283:PHE:CD2	1:A:287:PHE:CE1	2.98	0.51
1:A:225:GLN:O	1:A:228:PHE:HB3	2.11	0.51
1:A:193:THR:HG22	1:A:195:HIS:HB2	1.93	0.50
1:A:28:GLN:CB	1:A:31:LEU:HD12	2.39	0.50
1:A:75:ILE:CG2	1:A:131:LEU:HD13	2.40	0.50
1:A:49:MET:CE	1:A:49:MET:HA	2.41	0.50
1:A:118:THR:HG22	1:A:168:ALA:HB2	1.93	0.49
1:A:298:SER:HA	1:A:301:TYR:CE2	2.48	0.49

Continued on next page...

Continued from previous page...

Atom-1	Atom-2	Distance(Å)	Clash(Å)
1:A:223:TYR:HB3	1:A:254:VAL:HG11	1.93	0.49
1:A:258:VAL:HG12	1:A:259:ILE:N	2.27	0.49
1:A:277:THR:O	1:A:278:HIS:ND1	2.46	0.49
1:A:242:THR:HG22	1:A:243:THR:N	2.27	0.48
2:B:347:CYS:HB3	2:B:349:LEU:HD12	1.95	0.48
1:A:24:PHE:HE1	1:A:180:PRO:HG3	1.79	0.48
1:A:180:PRO:HA	1:A:186:SER:O	2.14	0.47
1:A:64:GLN:HA	1:A:64:GLN:NE2	2.30	0.47
1:A:28:GLN:O	1:A:31:LEU:HB2	2.14	0.47
1:A:24:PHE:CD2	1:A:107:PRO:HG3	2.49	0.47
1:A:62:THR:HG22	1:A:62:THR:O	2.14	0.47
1:A:64:GLN:CA	1:A:64:GLN:HE21	2.28	0.46
1:A:190:ASP:OD2	1:A:193:THR:HB	2.15	0.46
1:A:74:TYR:CD2	1:A:153:ALA:HB1	2.51	0.46
1:A:65:HIS:CD2	1:A:316:CYS:HB3	2.50	0.46
1:A:220:PHE:HA	5:A:1403:BOG:H8'1	1.96	0.46
1:A:155:MET:O	1:A:156:GLY:C	2.54	0.46
1:A:10:TYR:CD1	1:A:10:TYR:C	2.89	0.46
1:A:124:ALA:O	1:A:127:SER:HB2	2.16	0.46
1:A:44:MET:HG3	1:A:94:THR:HG22	1.98	0.46
1:A:189:ILE:CD1	1:A:203:PHE:HE2	2.24	0.45
1:A:231:LYS:HA	1:A:247:GLU:HG3	1.97	0.45
1:A:15:ASN:OD1	1:A:18:GLY:HA2	2.15	0.45
1:A:230:VAL:CG1	1:A:247:GLU:HA	2.46	0.45
2:B:340:ILE:O	2:B:342:GLU:N	2.50	0.45
1:A:210:VAL:HG12	1:A:211:HIS:HD2	1.75	0.45
1:A:23:PRO:O	1:A:102:TYR:HB2	2.17	0.45
1:A:29:TYR:CD1	1:A:34:PRO:HG3	2.52	0.45
1:A:210:VAL:CG1	1:A:211:HIS:HD2	2.31	0.44
1:A:170:PRO:CB	1:A:171:PRO:HD3	2.42	0.44
1:A:98:SER:HA	1:A:185:CYS:SG	2.58	0.44
1:A:64:GLN:CA	1:A:64:GLN:NE2	2.80	0.44
1:A:303:PRO:O	1:A:307:ILE:HB	2.17	0.44
1:A:96:TYR:HD2	1:A:105:PHE:CZ	2.35	0.44
1:A:266:LEU:HA	1:A:266:LEU:HD12	1.55	0.44
1:A:146:PHE:HZ	1:A:152:HIS:CD2	2.35	0.44
1:A:130:VAL:HA	1:A:133:ILE:HD12	1.99	0.44
1:A:231:LYS:NZ	1:A:247:GLU:OE2	2.50	0.43
1:A:66:LYS:HA	1:A:69:ARG:CZ	2.46	0.43
1:A:57:LEU:CD1	1:A:321:LEU:HD21	2.48	0.43
1:A:31:LEU:HD22	1:A:285:PRO:HG3	2.01	0.43
1:A:31:LEU:CD2	1:A:285:PRO:HG3	2.49	0.43

Continued on next page...

Continued from previous page...

Atom-1	Atom-2	Distance(Å)	Clash(Å)
1:A:274:TYR:CD1	1:A:274:TYR:C	2.92	0.43
1:A:146:PHE:CZ	1:A:152:HIS:CD2	3.06	0.43
1:A:72:LEU:HD12	2:B:346:ASP:HB3	2.00	0.42
1:A:227:VAL:O	1:A:231:LYS:HG3	2.18	0.42
1:A:93:THR:HG22	1:A:94:THR:N	2.34	0.42
1:A:208:PHE:CE2	1:A:213:ILE:HD11	2.55	0.42
1:A:133:ILE:O	1:A:137:VAL:HG23	2.19	0.42
1:A:217:ILE:HG22	1:A:218:VAL:N	2.34	0.42
1:A:193:THR:HA	1:A:194:PRO:HD3	1.81	0.41
1:A:70:THR:O	1:A:73:ASN:HB2	2.20	0.41
1:A:325:LYS:O	1:A:326:ASN:HB2	2.21	0.41
1:A:122:GLU:OE1	1:A:211:HIS:ND1	2.47	0.41
1:A:298:SER:HA	1:A:301:TYR:CD2	2.55	0.41
1:A:96:TYR:CD2	1:A:105:PHE:HZ	2.39	0.41
1:A:214:ILE:CB	1:A:215:PRO:CD	2.97	0.41
1:A:66:LYS:HA	1:A:69:ARG:HH12	1.80	0.41
1:A:251:THR:HG22	1:A:252:ARG:N	2.36	0.41
1:A:49:MET:O	1:A:53:PRO:HG2	2.21	0.40
1:A:31:LEU:HD22	1:A:285:PRO:CB	2.52	0.40
1:A:192:TYR:HA	1:A:275:ILE:HG21	2.04	0.40
1:A:210:VAL:HA	1:A:214:ILE:HG12	2.02	0.40
1:A:54:ILE:CG2	1:A:303:PRO:HB2	2.51	0.40

All (1) symmetry-related close contacts are listed below. The label for Atom-2 includes the symmetry operator and encoded unit-cell translations to be applied.

Atom-1	Atom-2	Distance(Å)	Clash(Å)
1:A:65:HIS:ND1	1:A:239:GLU:OE1[3_555]	2.12	0.08

5.3 Torsion angles

5.3.1 Protein backbone ⓘ

In the following table, the Percentiles column shows the percent Ramachandran outliers of the chain as a percentile score with respect to all X-ray entries followed by that with respect to entries of similar resolution. The Analysed column shows the number of residues for which the backbone conformation was analysed, and the total number of residues.

Mol	Chain	Analysed	Favoured	Allowed	Outliers	Percentiles	
1	A	325/349 (93%)	268 (82%)	56 (17%)	1 (0%)	50	92
2	B	9/11 (82%)	8 (89%)	0	1 (11%)	1	5

Continued on next page...

Continued from previous page...

Mol	Chain	Analysed	Favoured	Allowed	Outliers	Percentiles
All	All	334/360 (93%)	276 (83%)	56 (17%)	2 (1%)	33 83

All (2) Ramachandran outliers are listed below:

Mol	Chain	Res	Type
2	B	341	LEU
1	A	53	PRO

5.3.2 Protein sidechains ⓘ

In the following table, the Percentiles column shows the percent sidechain outliers of the chain as a percentile score with respect to all X-ray entries followed by that with respect to entries of similar resolution. The Analysed column shows the number of residues for which the sidechain conformation was analysed, and the total number of residues.

Mol	Chain	Analysed	Rotameric	Outliers	Percentiles
1	A	278/296 (94%)	258 (93%)	20 (7%)	21 64
2	B	10/10 (100%)	10 (100%)	0	100 100
All	All	288/306 (94%)	268 (93%)	20 (7%)	22 67

All (20) residues with a non-rotameric sidechain are listed below:

Mol	Chain	Res	Type
1	A	1	MET
1	A	57	LEU
1	A	61	VAL
1	A	64	GLN
1	A	71	PRO
1	A	152	HIS
1	A	189	ILE
1	A	192	TYR
1	A	202	SER
1	A	205	ILE
1	A	206	TYR
1	A	213	ILE
1	A	220	PHE
1	A	236	GLN
1	A	238	GLN
1	A	242	THR
1	A	251	THR

Continued on next page...

Continued from previous page...

Mol	Chain	Res	Type
1	A	287	PHE
1	A	293	PHE
1	A	308	MET

Some sidechains can be flipped to improve hydrogen bonding and reduce clashes. All (4) such sidechains are listed below:

Mol	Chain	Res	Type
1	A	28	GLN
1	A	64	GLN
1	A	65	HIS
1	A	100	HIS

5.3.3 RNA ⓘ

There are no RNA chains in this entry.

5.4 Non-standard residues in protein, DNA, RNA chains ⓘ

There are no non-standard protein/DNA/RNA residues in this entry.

5.5 Carbohydrates ⓘ

2 carbohydrates are modelled in this entry.

In the following table, the Counts columns list the number of bonds (or angles) for which Mogul statistics could be retrieved, the number of bonds (or angles) that are observed in the model and the number of bonds (or angles) that are defined in the chemical component dictionary. The Link column lists molecule types, if any, to which the group is linked. The Z score for a bond length (or angle) is the number of standard deviations the observed value is removed from the expected value. A bond length (or angle) with $|Z| > 2$ is considered an outlier worth inspection. RMSZ is the root-mean-square of all Z scores of the bond lengths (or angles).

Mol	Type	Chain	Res	Link	Bond lengths			Bond angles		
					Counts	RMSZ	$\# Z > 2$	Counts	RMSZ	$\# Z > 2$
7	NAG	A	1405	1,7	12,14,15	0.75	0	15,19,21	2.17	8 (53%)
7	NAG	A	1406	7	12,14,15	0.96	0	15,19,21	1.36	2 (13%)

In the following table, the Chirals column lists the number of chiral outliers, the number of chiral centers analysed, the number of these observed in the model and the number defined in the chemical component dictionary. Similar counts are reported in the Torsion and Rings columns. '-' means

no outliers of that kind were identified.

Mol	Type	Chain	Res	Link	Chirals	Torsions	Rings
7	NAG	A	1405	1,7	-	0/6/23/26	0/1/1/1
7	NAG	A	1406	7	-	0/6/23/26	0/1/1/1

There are no bond length outliers.

All (10) bond angle outliers are listed below:

Mol	Chain	Res	Type	Atoms	Z	Observed(°)	Ideal(°)
7	A	1405	NAG	O5-C5-C4	4.35	116.18	110.65
7	A	1406	NAG	O4-C4-C5	3.63	118.84	109.28
7	A	1405	NAG	C3-C2-N2	-3.35	106.66	111.76
7	A	1405	NAG	O4-C4-C3	-3.24	103.09	110.35
7	A	1405	NAG	C2-N2-C7	2.78	127.75	123.09
7	A	1406	NAG	C8-C7-N2	2.27	120.54	116.11
7	A	1405	NAG	O7-C7-C8	-2.21	117.72	122.04
7	A	1405	NAG	O5-C5-C6	2.18	109.26	106.98
7	A	1405	NAG	O7-C7-N2	2.10	126.28	121.90
7	A	1405	NAG	O3-C3-C2	-2.04	104.79	109.09

There are no chirality outliers.

There are no torsion outliers.

There are no ring outliers.

5.6 Ligand geometry ⓘ

4 ligands are modelled in this entry.

In the following table, the Counts columns list the number of bonds (or angles) for which Mogul statistics could be retrieved, the number of bonds (or angles) that are observed in the model and the number of bonds (or angles) that are defined in the chemical component dictionary. The Link column lists molecule types, if any, to which the group is linked. The Z score for a bond length (or angle) is the number of standard deviations the observed value is removed from the expected value. A bond length (or angle) with $|Z| > 2$ is considered an outlier worth inspection. RMSZ is the root-mean-square of all Z scores of the bond lengths (or angles).

Mol	Type	Chain	Res	Link	Bond lengths			Bond angles		
					Counts	RMSZ	# Z > 2	Counts	RMSZ	# Z > 2
4	ACT	A	1402	-	1,3,3	2.20	1 (100%)	0,3,3	0.00	-
5	BOG	A	1403	-	20,20,20	0.68	1 (5%)	25,25,25	1.31	2 (8%)
6	PLM	A	1404	1	16,16,17	5.59	2 (12%)	13,15,17	0.96	0
3	RET	A	401	1	19,20,21	0.87	1 (5%)	26,27,28	2.17	9 (34%)

In the following table, the Chirals column lists the number of chiral outliers, the number of chiral centers analysed, the number of these observed in the model and the number defined in the chemical component dictionary. Similar counts are reported in the Torsion and Rings columns. '-' means no outliers of that kind were identified.

Mol	Type	Chain	Res	Link	Chirals	Torsions	Rings
4	ACT	A	1402	-	-	0/0/0/0	0/0/0/0
5	BOG	A	1403	-	-	0/11/31/31	0/1/1/1
6	PLM	A	1404	1	-	0/13/14/15	0/0/0/0
3	RET	A	401	1	-	0/13/30/31	0/1/1/1

All (5) bond length outliers are listed below:

Mol	Chain	Res	Type	Atoms	Z	Observed(Å)	Ideal(Å)
6	A	1404	PLM	O2-C1	22.00	1.26	1.11
6	A	1404	PLM	C2-C1	3.38	1.57	1.47
4	A	1402	ACT	CH3-C	2.20	1.52	1.48
3	A	401	RET	C8-C9	2.05	1.50	1.45
5	A	1403	BOG	O1-C1	2.03	1.43	1.40

All (11) bond angle outliers are listed below:

Mol	Chain	Res	Type	Atoms	Z	Observed(°)	Ideal(°)
3	A	401	RET	C11-C10-C9	-5.08	119.97	127.29
3	A	401	RET	C18-C5-C6	-4.48	119.43	124.51
5	A	1403	BOG	C1'-O1-C1	4.37	121.82	113.96
3	A	401	RET	C7-C8-C9	-4.15	120.01	126.22
3	A	401	RET	C19-C9-C10	-2.83	118.90	122.92
3	A	401	RET	C19-C9-C8	2.82	122.66	118.09
3	A	401	RET	C17-C1-C6	2.53	114.53	110.33
5	A	1403	BOG	O1-C1-C2	2.40	111.23	108.18
3	A	401	RET	C20-C13-C12	2.36	121.91	118.09
3	A	401	RET	C18-C5-C4	2.35	117.65	113.34
3	A	401	RET	C3-C4-C5	2.30	117.22	113.74

There are no chirality outliers.

There are no torsion outliers.

There are no ring outliers.

5.7 Other polymers ⓘ

There are no such residues in this entry.

5.8 Polymer linkage issues

There are no chain breaks in this entry.

6 Fit of model and data

6.1 Protein, DNA and RNA chains

In the following table, the column labelled ‘#RSRZ> 2’ contains the number (and percentage) of RSRZ outliers, followed by percent RSRZ outliers for the chain as percentile scores relative to all X-ray entries and entries of similar resolution. The OWAB column contains the minimum, median, 95th percentile and maximum values of the occupancy-weighted average B-factor per residue. The column labelled ‘Q< 0.9’ lists the number of (and percentage) of residues with an average occupancy less than 0.9.

Mol	Chain	Analysed	<RSRZ>	#RSRZ>2	OWAB(Å ²)	Q<0.9
1	A	327/349 (93%)	-0.32	0 100 100	48, 71, 98, 135	0
2	B	11/11 (100%)	-0.32	0 100 100	82, 91, 95, 102	0
All	All	338/360 (93%)	-0.32	0 100 100	48, 72, 98, 135	0

There are no RSRZ outliers to report.

6.2 Non-standard residues in protein, DNA, RNA chains

There are no non-standard protein/DNA/RNA residues in this entry.

6.3 Carbohydrates

In the following table, the Atoms column lists the number of modelled atoms in the group and the number defined in the chemical component dictionary. LLDF column lists the quality of electron density of the group with respect to its neighbouring residues in protein, DNA or RNA chains. The B-factors column lists the minimum, median, 95th percentile and maximum values of B factors of atoms in the group. The column labelled ‘Q< 0.9’ lists the number of atoms with occupancy less than 0.9.

Mol	Type	Chain	Res	Atoms	RSR	LLDF	B-factors(Å ²)	Q<0.9
7	NAG	A	1406	14/15	0.24	0.89	41,48,52,63	0
7	NAG	A	1405	14/15	0.12	-2.11	53,56,59,60	0

6.4 Ligands

In the following table, the Atoms column lists the number of modelled atoms in the group and the number defined in the chemical component dictionary. LLDF column lists the quality of electron density of the group with respect to its neighbouring residues in protein, DNA or RNA chains. The B-factors column lists the minimum, median, 95th percentile and maximum values of B factors

of atoms in the group. The column labelled 'Q < 0.9' lists the number of atoms with occupancy less than 0.9.

Mol	Type	Chain	Res	Atoms	RSR	LLDF	B-factors(\AA^2)	Q<0.9
4	ACT	A	1402	4/4	0.36	7.09	74,78,83,86	0
3	RET	A	401	20/21	0.41	5.70	87,100,110,113	0
5	BOG	A	1403	20/20	0.26	2.35	65,111,124,125	0
6	PLM	A	1404	17/18	0.25	1.61	56,65,106,109	0

6.5 Other polymers ⓘ

There are no such residues in this entry.