



Full wwPDB X-ray Structure Validation Report

Mar 1, 2014 – 04:28 AM GMT

PDB ID : 3A7C
Title : Crystal structure of TLR2-PE-DTPA complex
Authors : Kang, J.Y.; Jin, M.S.; Lee, J.-O.
Deposited on : 2009-09-20
Resolution : 2.40 Å(reported)

This is a full wwPDB validation report for a publicly released PDB entry.
We welcome your comments at validation@mail.wwpdb.org
A user guide is available at <http://wwpdb.org/ValidationPDFNotes.html>

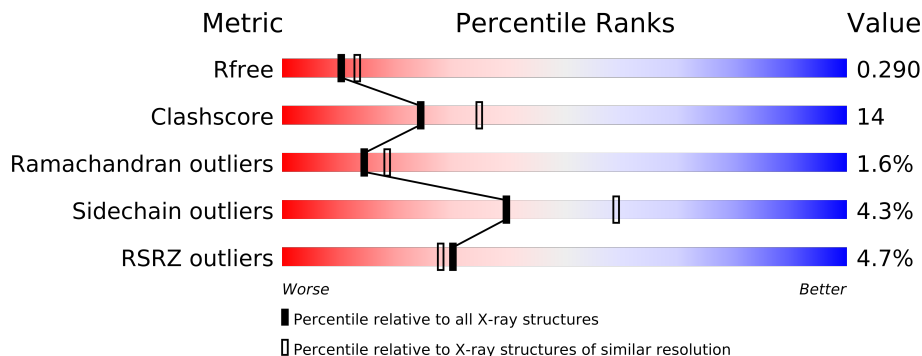
The following versions of software and data (see [references](#)) were used in the production of this report:

MolProbity : 4.02b-467
Mogul : 1.15 2013
Xtriage (Phenix) : dev-1323
EDS : stable22639
Percentile statistics : 21963
Refmac : 5.8.0049
CCP4 : 6.3.0 (Settle)
Ideal geometry (proteins) : Engh & Huber (2001)
Ideal geometry (DNA, RNA) : Parkinson et. al. (1996)
Validation Pipeline (wwPDB-VP) : stable22683

1 Overall quality at a glance

The reported resolution of this entry is 2.40 Å.

Percentile scores (ranging between 0-100) for global validation metrics of the entry are shown in the following graphic. The table shows the number of entries on which the scores are based.



Metric	Whole archive (#Entries)	Similar resolution (#Entries, resolution range(Å))
R_{free}	66092	2207 (2.40-2.40)
Clashscore	79885	2789 (2.40-2.40)
Ramachandran outliers	78287	2736 (2.40-2.40)
Sidechain outliers	78261	2737 (2.40-2.40)
RSRZ outliers	66119	2210 (2.40-2.40)

The table below summarises the geometric issues observed across the polymeric chains and their fit to the electron density. The red, orange, yellow and green segments on the lower bar indicate the fraction of residues that contain outliers for ≥ 3 , 2, 1 and 0 types of geometric quality criteria. The upper red bar (where present) indicates the fraction of residues that have poor fit to the electron density.

Mol	Chain	Length	Quality of chain
1	A	580	

The following table lists non-polymeric compounds that are outliers for geometric or electron-density-fit criteria:

Mol	Type	Chain	Res	Geometry	Electron density
4	NAG	A	821	-	X

2 Entry composition

There are 7 unique types of molecules in this entry. The entry contains 4711 atoms, of which 0 are hydrogen and 0 are deuterium.

In the tables below, the ZeroOcc column contains the number of atoms modelled with zero occupancy, the AltConf column contains the number of residues with at least one atom in alternate conformation and the Trace column contains the number of residues modelled with at most 2 atoms.

- Molecule 1 is a protein called Toll-like receptor 2, Variable lymphocyte receptor B.

Mol	Chain	Residues	Atoms					ZeroOcc	AltConf	Trace
1	A	549	Total	C	N	O	S	0	0	0
			4346	2766	735	825	20			

There are 6 discrepancies between the modelled and reference sequences:

Chain	Residue	Modelled	Actual	Comment	Reference
A	507	ALA	-	LINKER	UNP Q4G1L2
A	508	SER	-	LINKER	UNP Q4G1L2
A	577	LEU	-	EXPRESSION TAG	UNP Q4G1L2
A	578	VAL	-	EXPRESSION TAG	UNP Q4G1L2
A	579	PRO	-	EXPRESSION TAG	UNP Q4G1L2
A	580	ARG	-	EXPRESSION TAG	UNP Q4G1L2

- Molecule 2 is a polymer of unknown type called SUGAR (2-MER).

Mol	Chain	Residues	Atoms				ZeroOcc	AltConf
2	A	2	Total	C	N	O	0	0
			28	16	2	10		

There are 6 discrepancies between the modelled and reference sequences:

Chain	Residue	Modelled	Actual	Comment	Reference
A	507	ALA	-	LINKER	UNP Q4G1L2
A	508	SER	-	LINKER	UNP Q4G1L2
A	577	LEU	-	EXPRESSION TAG	UNP Q4G1L2
A	578	VAL	-	EXPRESSION TAG	UNP Q4G1L2
A	579	PRO	-	EXPRESSION TAG	UNP Q4G1L2
A	580	ARG	-	EXPRESSION TAG	UNP Q4G1L2

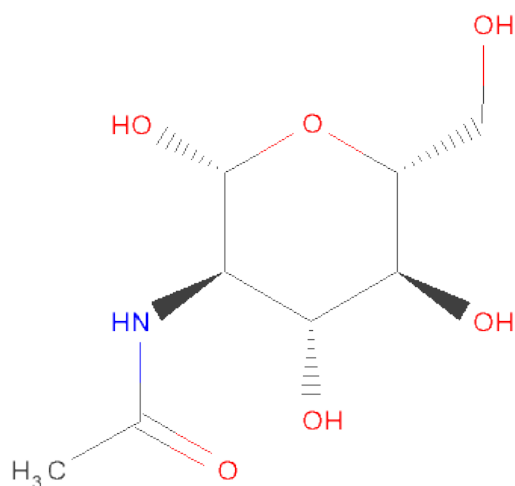
- Molecule 3 is a polymer of unknown type called SUGAR (3-MER).

Mol	Chain	Residues	Atoms				ZeroOcc	AltConf
3	A	3	Total	C	N	O	0	0
			39	22	2	15		

There are 6 discrepancies between the modelled and reference sequences:

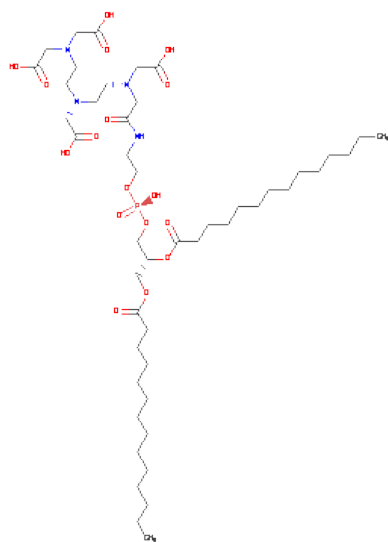
Chain	Residue	Modelled	Actual	Comment	Reference
A	507	ALA	-	LINKER	UNP Q4G1L2
A	508	SER	-	LINKER	UNP Q4G1L2
A	577	LEU	-	EXPRESSION TAG	UNP Q4G1L2
A	578	VAL	-	EXPRESSION TAG	UNP Q4G1L2
A	579	PRO	-	EXPRESSION TAG	UNP Q4G1L2
A	580	ARG	-	EXPRESSION TAG	UNP Q4G1L2

- Molecule 4 is SUGAR (N-ACETYL-D-GLUCOSAMINE) (three-letter code: NAG) (formula: $C_8H_{15}NO_6$).



Mol	Chain	Residues	Atoms				ZeroOcc	AltConf
4	A	1	Total	C	N	O	0	0
			14	8	1	5		

- Molecule 5 is (10S,13R)-3-{2-[{2-[BIS(CARBOXYMETHYL)AMINO]ETHYL}(CARBOXYMETHYL)AMINO]ETHYL}-10-HYDROXY-5,16-DIOXO-13-(TETRADECANOYLOXY)-9,11,15-TRIOXA-3,6-DIAZA-10-PHOSPHANONACOSAN-1-OICACID 10-OXIDE (three-letter code: PDK) (formula: $C_{47}H_{87}N_4O_{17}P$).



Mol	Chain	Residues	Atoms					ZeroOcc	AltConf
5	A	1	Total	C	N	O	P	0	0
			60	38	4	17	1		

- Molecule 6 is LUTETIUM (III) ION (three-letter code: LU) (formula: Lu).

Mol	Chain	Residues	Atoms		ZeroOcc	AltConf
6	A	1	Total	Lu	0	0
			1	1		

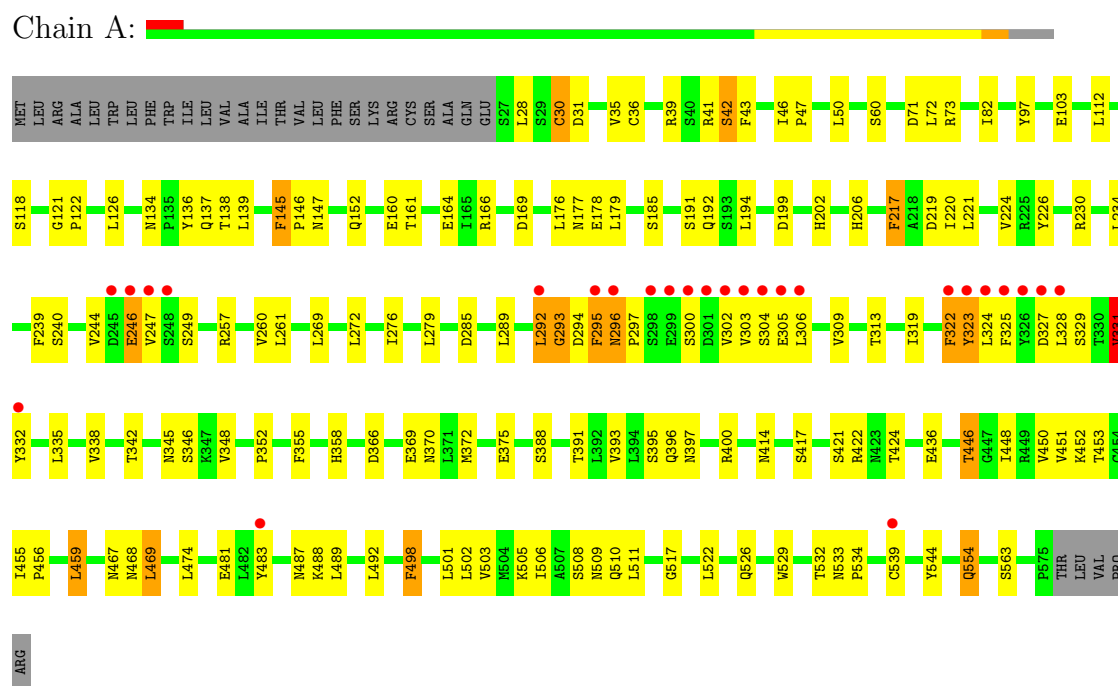
- Molecule 7 is water.

Mol	Chain	Residues	Atoms		ZeroOcc	AltConf
7	A	223	Total	O	0	0
			223	223		

3 Residue-property plots

These plots are drawn for all protein, RNA and DNA chains in the entry. The first graphic for a chain summarises the proportions of errors displayed in the second graphic. The second graphic shows the sequence view annotated by issues in geometry and electron density. Residues are color-coded according to the number of geometric quality criteria for which they contain at least one outlier: green = 0, yellow = 1, orange = 2 and red = 3 or more. A red dot above a residue indicates a poor fit to the electron density ($RSRZ > 2$). Stretches of 2 or more consecutive residues without any outlier are shown as a green connector. Residues present in the sample, but not in the model, are shown in grey.

- Molecule 1: Toll-like receptor 2, Variable lymphocyte receptor B



4 Data and refinement statistics

Property	Value	Source
Space group	P 21 21 21	Depositor
Cell constants a, b, c, α , β , γ	84.62Å 81.32Å 89.97Å 90.00° 90.00° 90.00°	Depositor
Resolution (Å)	49.12 – 2.40 49.12 – 2.41	Depositor EDS
% Data completeness (in resolution range)	98.1 (49.12-2.40) 98.2 (49.12-2.41)	Depositor EDS
R_{merge}	(Not available)	Depositor
R_{sym}	0.09	Depositor
$\langle I/\sigma(I) \rangle$ ¹	1.31 (at 2.39Å)	Xtriage
Refinement program	CNS 1.2	Depositor
R, R_{free}	0.215 , 0.290 0.220 , 0.290	Depositor DCC
R_{free} test set	1188 reflections (5.14%)	DCC
Wilson B-factor (Å ²)	30.1	Xtriage
Anisotropy	0.444	Xtriage
Bulk solvent k_{sol} (e/Å ³), B_{sol} (Å ²)	0.33 , 28.6	EDS
Estimated twinning fraction	0.023 for k,h,-l	Xtriage
L-test for twinning	$\langle L \rangle = 0.48$, $\langle L^2 \rangle = 0.31$	Xtriage
Outliers	1 of 24308 reflections (0.004%)	Xtriage
F_o, F_c correlation	0.92	EDS
Total number of atoms	4711	wwPDB-VP
Average B, all atoms (Å ²)	38.0	wwPDB-VP

Xtriage's analysis on translational NCS is as follows: *The largest off-origin peak in the Patterson function is 4.96% of the height of the origin peak. No significant pseudotranslation is detected.*

¹Intensities estimated from amplitudes.

5 Model quality

5.1 Standard geometry

Bond lengths and bond angles in the following residue types are not validated in this section: LU, PDK, NAG, MAN

The Z score for a bond length (or angle) is the number of standard deviations the observed value is removed from the expected value. A bond length (or angle) with $|Z| > 5$ is considered an outlier worth inspection. RMSZ is the root-mean-square of all Z scores of the bond lengths (or angles).

Mol	Chain	Bond lengths		Bond angles	
		RMSZ	# Z >5	RMSZ	# Z >5
1	A	0.37	0/4430	0.67	0/6001

There are no bond length outliers.

There are no bond angle outliers.

There are no chirality outliers.

There are no planarity outliers.

5.2 Close contacts

In the following table, the Non-H and H(model) columns list the number of non-hydrogen atoms and hydrogen atoms in the chain respectively. The H(added) column lists the number of hydrogens added by MolProbity. The Clashes column lists the number of clashes within the asymmetric unit, and the number in parentheses is this value normalized per 1000 atoms of the molecule in the chain. The Symm-Clashes column gives symmetry related clashes, in the same way as for the Clashes column.

Mol	Chain	Non-H	H(model)	H(added)	Clashes	Symm-Clashes
1	A	4346	0	4395	121	0
2	A	28	0	25	1	0
3	A	39	0	34	1	0
4	A	14	0	13	1	0
5	A	60	0	55	6	0
6	A	1	0	0	0	0
7	A	223	0	0	8	0
All	All	4711	0	4522	126	0

Clashscore is defined as the number of clashes calculated for the entry per 1000 atoms (including hydrogens) of the entry. The overall clashscore for this entry is 14.

All (126) close contacts within the same asymmetric unit are listed below.

Atom-1	Atom-2	Distance(Å)	Clash(Å)
5:A:581:PDK:C58	5:A:581:PDK:C59	1.79	1.54
1:A:322:PHE:CD2	5:A:581:PDK:H2BT	2.13	0.84
1:A:554:GLN:HE21	1:A:554:GLN:H	1.26	0.82
1:A:554:GLN:NE2	1:A:554:GLN:H	1.76	0.82
1:A:469:LEU:H	1:A:487:ASN:HD22	1.26	0.81
1:A:481:GLU:HG3	1:A:503:VAL:HB	1.67	0.75
1:A:121:GLY:HA2	1:A:147:ASN:HD21	1.51	0.75
1:A:446:THR:HG22	1:A:448:ILE:HG12	1.69	0.74
1:A:138:THR:HG22	1:A:164:GLU:HB2	1.70	0.73
1:A:303:VAL:HG22	1:A:305:GLU:H	1.54	0.73
1:A:372:MET:H	1:A:397:ASN:HD22	1.36	0.72
1:A:395:SER:O	1:A:421:SER:O	2.10	0.69
1:A:97:TYR:HA	1:A:122:PRO:HG3	1.77	0.67
1:A:244:VAL:HG21	1:A:247:VAL:HG22	1.76	0.65
1:A:451:VAL:HG13	1:A:455:ILE:HD12	1.77	0.65
1:A:296:ASN:H	1:A:297:PRO:CD	2.10	0.65
1:A:492:LEU:HD12	1:A:506:ILE:HD13	1.81	0.63
5:A:581:PDK:C59	5:A:581:PDK:H158	2.16	0.62
1:A:160:GLU:HA	1:A:185:SER:OG	2.01	0.61
1:A:388:SER:HA	1:A:414:ASN:HD22	1.65	0.61
1:A:375:GLU:HG2	7:A:689:HOH:O	2.01	0.61
1:A:348:VAL:H	1:A:370:ASN:ND2	1.98	0.61
1:A:178:GLU:HG2	1:A:202:HIS:HB3	1.82	0.60
1:A:335:LEU:O	1:A:338:VAL:HG22	2.02	0.59
1:A:510:GLN:HG2	7:A:794:HOH:O	2.04	0.58
1:A:328:LEU:O	1:A:331:VAL:HG23	2.04	0.58
5:A:581:PDK:H258	5:A:581:PDK:C59	2.16	0.57
1:A:234:LEU:HD13	1:A:269:LEU:HD11	1.86	0.57
1:A:292:LEU:HD12	1:A:293:GLY:N	2.20	0.57
1:A:121:GLY:HA2	1:A:147:ASN:ND2	2.18	0.56
1:A:348:VAL:H	1:A:370:ASN:HD22	1.53	0.56
1:A:502:LEU:HD22	1:A:526:GLN:NE2	2.20	0.56
1:A:138:THR:CG2	1:A:164:GLU:HB2	2.35	0.56
1:A:489:LEU:O	1:A:509:ASN:O	2.24	0.55
1:A:502:LEU:HD22	1:A:526:GLN:HE21	1.73	0.54
1:A:451:VAL:HG12	1:A:474:LEU:HD13	1.89	0.54
1:A:244:VAL:CG2	1:A:247:VAL:HG22	2.38	0.54
1:A:297:PRO:HB2	1:A:300:SER:HB2	1.90	0.54
1:A:292:LEU:O	1:A:294:ASP:N	2.41	0.54
1:A:324:LEU:HG	1:A:325:PHE:H	1.72	0.54
1:A:160:GLU:HA	1:A:185:SER:HG	1.74	0.53
1:A:249:SER:HB2	1:A:276:ILE:HA	1.91	0.53

Continued on next page...

Continued from previous page...

Atom-1	Atom-2	Distance(Å)	Clash(Å)
1:A:217:PHE:O	1:A:221:LEU:HG	2.09	0.53
1:A:467:ASN:HB2	1:A:487:ASN:HD21	1.74	0.53
1:A:139:LEU:HD12	1:A:169:ASP:HB3	1.90	0.53
1:A:292:LEU:HD12	1:A:293:GLY:H	1.74	0.52
1:A:152:GLN:HB3	1:A:177:ASN:HD22	1.75	0.52
1:A:289:LEU:HD12	1:A:319:ILE:HD13	1.90	0.52
1:A:554:GLN:HE21	1:A:554:GLN:N	2.02	0.52
1:A:121:GLY:CA	1:A:147:ASN:HD21	2.21	0.52
1:A:469:LEU:H	1:A:487:ASN:ND2	2.02	0.51
1:A:303:VAL:HG13	1:A:304:SER:H	1.74	0.51
1:A:450:VAL:HG12	1:A:451:VAL:N	2.26	0.51
1:A:505:LYS:HG2	1:A:529:TRP:CE3	2.46	0.51
1:A:246:GLU:HA	7:A:752:HOH:O	2.10	0.51
1:A:31:ASP:OD2	1:A:35:VAL:HB	2.11	0.51
2:A:802:NAG:H4	7:A:693:HOH:O	2.10	0.50
1:A:370:ASN:HB2	1:A:397:ASN:HD21	1.77	0.50
1:A:176:LEU:HD23	1:A:179:LEU:HB2	1.93	0.50
1:A:257:ARG:HG2	1:A:285:ASP:HB2	1.93	0.50
1:A:346:SER:H	1:A:370:ASN:HD21	1.58	0.50
1:A:391:THR:HG23	1:A:417:SER:HB2	1.93	0.50
1:A:41:ARG:HG2	1:A:43:PHE:CE2	2.47	0.50
1:A:319:ILE:O	1:A:319:ILE:HG13	2.10	0.50
1:A:118:SER:HA	7:A:749:HOH:O	2.12	0.49
1:A:446:THR:HG23	1:A:448:ILE:HG23	1.94	0.49
1:A:296:ASN:H	1:A:297:PRO:HD2	1.76	0.49
1:A:303:VAL:HG13	1:A:304:SER:N	2.27	0.49
1:A:313:THR:HG23	1:A:342:THR:HB	1.94	0.49
1:A:395:SER:O	1:A:422:ARG:HB2	2.13	0.49
1:A:293:GLY:O	1:A:294:ASP:HB2	2.13	0.49
1:A:388:SER:HA	1:A:414:ASN:ND2	2.26	0.48
1:A:247:VAL:HG11	7:A:607:HOH:O	2.13	0.48
1:A:345:ASN:HA	1:A:369:GLU:O	2.14	0.48
1:A:498:PHE:HB2	1:A:501:LEU:HB2	1.95	0.48
1:A:451:VAL:CG1	1:A:474:LEU:HD22	2.44	0.48
1:A:327:ASP:O	1:A:328:LEU:HB2	2.13	0.47
3:A:812:NAG:H2	7:A:798:HOH:O	2.14	0.47
1:A:534:PRO:HA	1:A:563:SER:HB2	1.96	0.47
1:A:134:ASN:HB2	1:A:136:TYR:CE2	2.48	0.47
1:A:260:VAL:C	1:A:261:LEU:HD12	2.35	0.47
1:A:39:ARG:HG3	1:A:60:SER:HB2	1.97	0.47
1:A:511:LEU:H	1:A:533:ASN:HD22	1.63	0.47
1:A:191:SER:O	1:A:192:GLN:HB2	2.15	0.46

Continued on next page...

Continued from previous page...

Atom-1	Atom-2	Distance(Å)	Clash(Å)
1:A:306:LEU:O	1:A:309:VAL:HG23	2.16	0.46
1:A:322:PHE:CE2	5:A:581:PDK:H2BT	2.50	0.46
1:A:30:CYS:HA	1:A:36:CYS:HA	1.98	0.46
1:A:346:SER:H	1:A:370:ASN:ND2	2.15	0.45
1:A:322:PHE:CD2	5:A:581:PDK:CBT	2.93	0.45
1:A:145:PHE:N	1:A:146:PRO:CD	2.79	0.45
1:A:400:ARG:HD3	1:A:424:THR:O	2.17	0.45
1:A:192:GLN:HA	1:A:219:ASP:OD1	2.17	0.44
1:A:508:SER:HA	1:A:532:THR:O	2.17	0.44
1:A:366:ASP:HA	1:A:393:VAL:HB	2.00	0.44
1:A:446:THR:CG2	1:A:448:ILE:HG12	2.43	0.44
1:A:269:LEU:O	1:A:272:LEU:HB2	2.18	0.44
1:A:137:GLN:HG3	1:A:161:THR:HG22	1.99	0.44
1:A:206:HIS:CE1	1:A:230:ARG:HD2	2.52	0.43
1:A:332:TYR:HB3	1:A:358:HIS:CD2	2.53	0.43
1:A:517:GLY:HA2	1:A:544:TYR:CE1	2.53	0.43
1:A:289:LEU:O	1:A:319:ILE:HD12	2.18	0.43
1:A:509:ASN:O	1:A:510:GLN:HB2	2.18	0.43
1:A:60:SER:OG	1:A:82:ILE:HG22	2.19	0.43
1:A:47:PRO:HG2	1:A:50:LEU:HD21	2.00	0.42
1:A:436:GLU:HG2	7:A:717:HOH:O	2.19	0.42
1:A:295:PHE:HD2	1:A:295:PHE:HA	1.71	0.42
1:A:220:ILE:HB	1:A:224:VAL:CG2	2.50	0.42
1:A:46:ILE:HD13	1:A:72:LEU:HD21	2.02	0.42
1:A:329:SER:C	1:A:331:VAL:H	2.22	0.42
1:A:166:ARG:HB2	1:A:169:ASP:OD1	2.20	0.41
1:A:276:ILE:HD12	1:A:279:LEU:HD22	2.03	0.41
1:A:147:ASN:HB3	4:A:821:NAG:C1	2.50	0.41
1:A:452:LYS:O	1:A:474:LEU:HD21	2.21	0.41
1:A:239:PHE:CG	1:A:240:SER:N	2.89	0.41
1:A:396:GLN:NE2	1:A:422:ARG:NH1	2.69	0.41
1:A:121:GLY:O	1:A:147:ASN:ND2	2.54	0.41
1:A:73:ARG:HH11	1:A:73:ARG:HG3	1.86	0.41
1:A:103:GLU:HA	1:A:126:LEU:HA	2.02	0.41
1:A:469:LEU:HB2	1:A:487:ASN:ND2	2.36	0.40
1:A:328:LEU:C	1:A:331:VAL:HG23	2.41	0.40
1:A:487:ASN:C	1:A:488:LYS:HD2	2.42	0.40
1:A:446:THR:HG23	1:A:446:THR:O	2.20	0.40
1:A:41:ARG:HB3	1:A:42:SER:H	1.61	0.40
1:A:352:PRO:HG2	1:A:355:PHE:HB2	2.03	0.40
1:A:456:PRO:HG2	1:A:459:LEU:HD13	2.03	0.40
1:A:446:THR:CG2	1:A:448:ILE:HG23	2.51	0.40

There are no symmetry-related clashes.

5.3 Torsion angles

5.3.1 Protein backbone ⓘ

In the following table, the Percentiles column shows the percent Ramachandran outliers of the chain as a percentile score with respect to all X-ray entries followed by that with respect to entries of similar resolution. The Analysed column shows the number of residues for which the backbone conformation was analysed, and the total number of residues.

Mol	Chain	Analysed	Favoured	Allowed	Outliers	Percentiles
1	A	547/580 (94%)	470 (86%)	68 (12%)	9 (2%)	14 18

All (9) Ramachandran outliers are listed below:

Mol	Chain	Res	Type
1	A	42	SER
1	A	292	LEU
1	A	293	GLY
1	A	323	TYR
1	A	302	VAL
1	A	296	ASN
1	A	28	LEU
1	A	331	VAL
1	A	145	PHE

5.3.2 Protein sidechains ⓘ

In the following table, the Percentiles column shows the percent sidechain outliers of the chain as a percentile score with respect to all X-ray entries followed by that with respect to entries of similar resolution. The Analysed column shows the number of residues for which the sidechain conformation was analysed, and the total number of residues.

Mol	Chain	Analysed	Rotameric	Outliers	Percentiles
1	A	509/537 (95%)	487 (96%)	22 (4%)	40 59

All (22) residues with a non-rotameric sidechain are listed below:

Mol	Chain	Res	Type
1	A	30	CYS
1	A	71	ASP

Continued on next page...

Continued from previous page...

Mol	Chain	Res	Type
1	A	112	LEU
1	A	194	LEU
1	A	199	ASP
1	A	217	PHE
1	A	226	TYR
1	A	246	GLU
1	A	295	PHE
1	A	322	PHE
1	A	323	TYR
1	A	331	VAL
1	A	446	THR
1	A	453	THR
1	A	459	LEU
1	A	468	ASN
1	A	469	LEU
1	A	483	TYR
1	A	498	PHE
1	A	522	LEU
1	A	539	CYS
1	A	554	GLN

Some sidechains can be flipped to improve hydrogen bonding and reduce clashes. All (15) such sidechains are listed below:

Mol	Chain	Res	Type
1	A	77	ASN
1	A	79	GLN
1	A	111	HIS
1	A	177	ASN
1	A	370	ASN
1	A	390	GLN
1	A	396	GLN
1	A	397	ASN
1	A	423	ASN
1	A	468	ASN
1	A	487	ASN
1	A	526	GLN
1	A	533	ASN
1	A	550	ASN
1	A	554	GLN

5.3.3 RNA ⓘ

There are no RNA chains in this entry.

5.4 Non-standard residues in protein, DNA, RNA chains ⓘ

There are no non-standard protein/DNA/RNA residues in this entry.

5.5 Carbohydrates ⓘ

5 carbohydrates are modelled in this entry.

In the following table, the Counts columns list the number of bonds (or angles) for which Mogul statistics could be retrieved, the number of bonds (or angles) that are observed in the model and the number of bonds (or angles) that are defined in the chemical component dictionary. The Link column lists molecule types, if any, to which the group is linked. The Z score for a bond length (or angle) is the number of standard deviations the observed value is removed from the expected value. A bond length (or angle) with $|Z| > 2$ is considered an outlier worth inspection. RMSZ is the root-mean-square of all Z scores of the bond lengths (or angles).

Mol	Type	Chain	Res	Link	Bond lengths			Bond angles		
					Counts	RMSZ	# $ Z > 2$	Counts	RMSZ	# $ Z > 2$
2	NAG	A	801	1,2	12,14,15	0.64	0	15,19,21	0.77	0
2	NAG	A	802	2	12,14,15	0.39	0	15,19,21	0.70	0
3	NAG	A	811	1,3	12,14,15	0.69	0	15,19,21	1.14	1 (6%)
3	NAG	A	812	3	12,14,15	0.69	0	15,19,21	0.71	0
3	MAN	A	813	3	10,11,12	0.38	0	11,15,17	0.49	0

In the following table, the Chirals column lists the number of chiral outliers, the number of chiral centers analysed, the number of these observed in the model and the number defined in the chemical component dictionary. Similar counts are reported in the Torsion and Rings columns. '-' means no outliers of that kind were identified.

Mol	Type	Chain	Res	Link	Chirals	Torsions	Rings
2	NAG	A	801	1,2	-	0/6/23/26	0/1/1/1
2	NAG	A	802	2	-	0/6/23/26	0/1/1/1
3	NAG	A	811	1,3	-	0/6/23/26	0/1/1/1
3	NAG	A	812	3	-	1/6/23/26	0/1/1/1
3	MAN	A	813	3	-	0/2/19/22	0/1/1/1

There are no bond length outliers.

All (1) bond angle outliers are listed below:

Mol	Chain	Res	Type	Atoms	Z	Observed(°)	Ideal(°)
3	A	811	NAG	C3-C4-C5	-2.38	105.96	110.20

There are no chirality outliers.

All (1) torsion outliers are listed below:

Mol	Chain	Res	Type	Atoms
3	A	812	NAG	O7-C7-N2-C2

There are no ring outliers.

5.6 Ligand geometry ⓘ

Of 3 ligands modelled in this entry, 1 is monoatomic - leaving 2 for Mogul analysis.

In the following table, the Counts columns list the number of bonds (or angles) for which Mogul statistics could be retrieved, the number of bonds (or angles) that are observed in the model and the number of bonds (or angles) that are defined in the chemical component dictionary. The Link column lists molecule types, if any, to which the group is linked. The Z score for a bond length (or angle) is the number of standard deviations the observed value is removed from the expected value. A bond length (or angle) with $|Z| > 2$ is considered an outlier worth inspection. RMSZ is the root-mean-square of all Z scores of the bond lengths (or angles).

Mol	Type	Chain	Res	Link	Bond lengths			Bond angles		
					Counts	RMSZ	$\# Z > 2$	Counts	RMSZ	$\# Z > 2$
5	PDK	A	581	6	59,59,68	10.45	31 (52%)	72,72,81	4.01	24 (33%)
4	NAG	A	821	-	12,14,15	0.42	0	15,19,21	0.68	0

In the following table, the Chirals column lists the number of chiral outliers, the number of chiral centers analysed, the number of these observed in the model and the number defined in the chemical component dictionary. Similar counts are reported in the Torsion and Rings columns. '-' means no outliers of that kind were identified.

Mol	Type	Chain	Res	Link	Chirals	Torsions	Rings
5	PDK	A	581	6	-	0/70/70/79	0/0/0/0
4	NAG	A	821	-	-	0/6/23/26	0/1/1/1

All (31) bond length outliers are listed below:

Mol	Chain	Res	Type	Atoms	Z	Observed(Å)	Ideal(Å)
5	A	581	PDK	C59-C58	60.81	1.79	1.55
5	A	581	PDK	C43-C44	43.75	1.72	1.55
5	A	581	PDK	OCB-CBT	-10.60	1.20	1.45

Continued on next page...

Continued from previous page...

Mol	Chain	Res	Type	Atoms	Z	Observed(Å)	Ideal(Å)
5	A	581	PDK	CBZ-NCP	9.25	1.65	1.46
5	A	581	PDK	CBX-NCO	9.05	1.65	1.46
5	A	581	PDK	CBZ-CCJ	8.29	1.65	1.52
5	A	581	PDK	CBL-CBM	-8.26	1.16	1.50
5	A	581	PDK	CAX-C58	5.72	1.73	1.52
5	A	581	PDK	OCB-CCK	5.59	1.50	1.33
5	A	581	PDK	CBS-NCP	5.32	1.60	1.47
5	A	581	PDK	CBY-CCI	5.23	1.64	1.51
5	A	581	PDK	CBY-NCP	5.12	1.57	1.46
5	A	581	PDK	CBX-CCH	5.10	1.63	1.51
5	A	581	PDK	OCE-CCL	4.74	1.48	1.34
5	A	581	PDK	CBO-CCL	4.47	1.64	1.50
5	A	581	PDK	CA-N	4.38	1.55	1.46
5	A	581	PDK	CBQ-N	4.22	1.57	1.47
5	A	581	PDK	CBL-NCA	-4.20	1.36	1.46
5	A	581	PDK	PCQ-OCD	-3.94	1.41	1.59
5	A	581	PDK	CBJ-CBN	3.65	1.66	1.52
5	A	581	PDK	OAH-CCK	3.61	1.33	1.22
5	A	581	PDK	OCC-CBM	-3.45	1.29	1.44
5	A	581	PDK	CBT-CCM	3.37	1.60	1.50
5	A	581	PDK	OAF-CCI	3.11	1.33	1.22
5	A	581	PDK	CA-C	2.86	1.58	1.51
5	A	581	PDK	CBS-CBQ	2.64	1.62	1.51
5	A	581	PDK	CBW-NCO	2.31	1.51	1.46
5	A	581	PDK	CCJ-NCA	2.20	1.38	1.33
5	A	581	PDK	PCQ-OAO	2.19	1.64	1.55
5	A	581	PDK	OCD-CBU	2.18	1.53	1.44
5	A	581	PDK	OAM-CCH	2.15	1.30	1.22

All (24) bond angle outliers are listed below:

Mol	Chain	Res	Type	Atoms	Z	Observed(°)	Ideal(°)
5	A	581	PDK	C59-C58-CAX	15.69	149.71	114.46
5	A	581	PDK	CBT-OCB-CCK	14.79	160.47	117.13
5	A	581	PDK	CBU-CCM-CBT	-13.17	81.84	111.86
5	A	581	PDK	OCB-CBT-CCM	8.34	130.67	108.83
5	A	581	PDK	CCJ-CBZ-NCP	7.44	132.40	113.21
5	A	581	PDK	CBW-NCO-CBR	-6.41	96.27	112.34
5	A	581	PDK	CAZ-CAX-C58	6.40	138.06	113.78
5	A	581	PDK	CBY-NCP-CBS	-6.16	96.89	112.34
5	A	581	PDK	CBW-NCO-CBX	5.73	124.25	111.69
5	A	581	PDK	CBQ-CBS-NCP	5.51	127.82	113.28

Continued on next page...

Continued from previous page...

Mol	Chain	Res	Type	Atoms	Z	Observed(°)	Ideal(°)
5	A	581	PDK	OCB-CCK-CBN	5.01	127.71	111.94
5	A	581	PDK	CBX-NCO-CBR	-4.63	100.72	112.34
5	A	581	PDK	CBL-NCA-CCJ	4.54	132.09	122.84
5	A	581	PDK	OCE-CCM-CBT	-4.44	92.10	108.40
5	A	581	PDK	OCE-CCL-CBO	3.28	118.73	111.56
5	A	581	PDK	CCH-CBX-NCO	3.24	125.73	113.73
5	A	581	PDK	OCB-CCK-OAH	-3.12	114.92	123.43
5	A	581	PDK	CBG-CBE-C44	-2.34	104.90	113.78
5	A	581	PDK	OCC-PCQ-OAJ	2.33	118.49	109.37
5	A	581	PDK	CBZ-CCJ-NCA	2.29	121.45	115.71
5	A	581	PDK	CA-N-CBP	-2.27	106.65	112.34
5	A	581	PDK	OXT-C-O	2.07	128.55	123.30
5	A	581	PDK	CBK-CBO-CCL	2.04	121.49	113.51
5	A	581	PDK	OAG-CCJ-NCA	-2.00	118.96	122.94

There are no chirality outliers.

There are no torsion outliers.

There are no ring outliers.

5.7 Other polymers ⓘ

There are no such residues in this entry.

5.8 Polymer linkage issues

There are no chain breaks in this entry.

6 Fit of model and data ⓘ

6.1 Protein, DNA and RNA chains ⓘ

In the following table, the column labelled ‘#RSRZ> 2’ contains the number (and percentage) of RSRZ outliers, followed by percent RSRZ outliers for the chain as percentile scores relative to all X-ray entries and entries of similar resolution. The OWAB column contains the minimum, median, 95th percentile and maximum values of the occupancy-weighted average B-factor per residue. The column labelled ‘Q< 0.9’ lists the number of (and percentage) of residues with an average occupancy less than 0.9.

Mol	Chain	Analysed	<RSRZ>	#RSRZ>2	OWAB(Å ²)	Q<0.9
1	A	549/580 (94%)	-0.06	26 (4%) 30 28	9, 31, 90, 141	0

All (26) RSRZ outliers are listed below:

Mol	Chain	Res	Type	RSRZ
1	A	302	VAL	7.8
1	A	298	SER	7.4
1	A	304	SER	6.8
1	A	296	ASN	5.8
1	A	295	PHE	5.7
1	A	299	GLU	5.6
1	A	292	LEU	5.5
1	A	247	VAL	4.7
1	A	300	SER	4.3
1	A	327	ASP	4.2
1	A	539	CYS	4.1
1	A	328	LEU	3.2
1	A	322	PHE	3.1
1	A	305	GLU	3.1
1	A	303	VAL	3.0
1	A	248	SER	3.0
1	A	483	TYR	2.9
1	A	326	TYR	2.8
1	A	332	TYR	2.8
1	A	246	GLU	2.7
1	A	306	LEU	2.7
1	A	323	TYR	2.7
1	A	301	ASP	2.5
1	A	324	LEU	2.5
1	A	245	ASP	2.2
1	A	325	PHE	2.1

6.2 Non-standard residues in protein, DNA, RNA chains ⓘ

There are no non-standard protein/DNA/RNA residues in this entry.

6.3 Carbohydrates ⓘ

In the following table, the Atoms column lists the number of modelled atoms in the group and the number defined in the chemical component dictionary. LLDF column lists the quality of electron density of the group with respect to its neighbouring residues in protein, DNA or RNA chains. The B-factors column lists the minimum, median, 95th percentile and maximum values of B factors of atoms in the group. The column labelled 'Q< 0.9' lists the number of atoms with occupancy less than 0.9.

Mol	Type	Chain	Res	Atoms	RSR	LLDF	B-factors(Å ²)	Q<0.9
2	NAG	A	802	14/15	0.34	5.02	81,85,88,88	0
2	NAG	A	801	14/15	0.14	-0.04	46,56,66,75	0
3	NAG	A	812	14/15	0.12	-0.70	47,56,57,65	0
3	NAG	A	811	14/15	0.11	-0.85	22,28,34,38	0
3	MAN	A	813	11/12	0.13	-	69,72,75,75	0

6.4 Ligands ⓘ

In the following table, the Atoms column lists the number of modelled atoms in the group and the number defined in the chemical component dictionary. LLDF column lists the quality of electron density of the group with respect to its neighbouring residues in protein, DNA or RNA chains. The B-factors column lists the minimum, median, 95th percentile and maximum values of B factors of atoms in the group. The column labelled 'Q< 0.9' lists the number of atoms with occupancy less than 0.9.

Mol	Type	Chain	Res	Atoms	RSR	LLDF	B-factors(Å ²)	Q<0.9
4	NAG	A	821	14/15	0.26	5.79	99,101,102,102	0
5	PDK	A	581	60/69	0.29	1.39	46,92,100,105	0
6	LU	A	1001	1/1	0.09	-1.78	89,89,89,89	0

6.5 Other polymers ⓘ

There are no such residues in this entry.