



Full wwPDB X-ray Structure Validation Report

Feb 27, 2014 – 11:49 PM GMT

PDB ID : 3A7Q
Title : Structural basis for specific recognition of reelin by its receptors
Authors : Yasui, N.; Nogi, T.; Takagi, J.
Deposited on : 2009-10-01
Resolution : 2.60 Å(reported)

This is a full wwPDB validation report for a publicly released PDB entry.
We welcome your comments at validation@mail.wwpdb.org
A user guide is available at <http://wwpdb.org/ValidationPDFNotes.html>

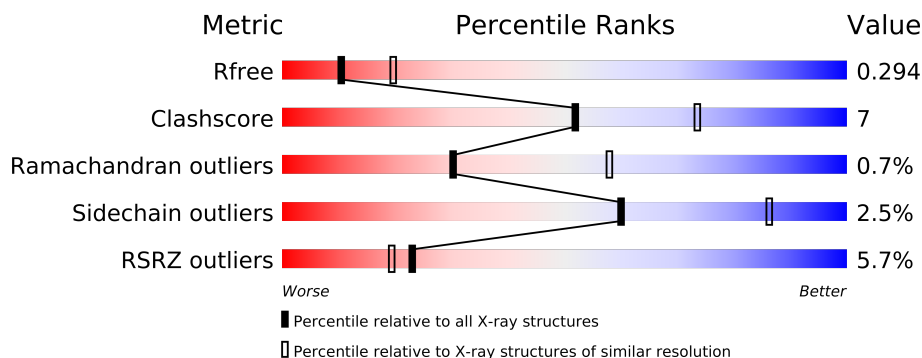
The following versions of software and data (see [references](#)) were used in the production of this report:

MolProbity : 4.02b-467
Mogul : 1.15 2013
Xtriage (Phenix) : dev-1323
EDS : stable22639
Percentile statistics : 21963
Refmac : 5.8.0049
CCP4 : 6.3.0 (Settle)
Ideal geometry (proteins) : Engh & Huber (2001)
Ideal geometry (DNA, RNA) : Parkinson et. al. (1996)
Validation Pipeline (wwPDB-VP) : stable22683

1 Overall quality at a glance

The reported resolution of this entry is 2.60 Å.

Percentile scores (ranging between 0-100) for global validation metrics of the entry are shown in the following graphic. The table shows the number of entries on which the scores are based.



Metric	Whole archive (#Entries)	Similar resolution (#Entries, resolution range(Å))
R_{free}	66092	1718 (2.60-2.60)
Clashscore	79885	2154 (2.60-2.60)
Ramachandran outliers	78287	2113 (2.60-2.60)
Sidechain outliers	78261	2113 (2.60-2.60)
RSRZ outliers	66119	1718 (2.60-2.60)

The table below summarises the geometric issues observed across the polymeric chains and their fit to the electron density. The red, orange, yellow and green segments on the lower bar indicate the fraction of residues that contain outliers for ≥ 3 , 2, 1 and 0 types of geometric quality criteria. The upper red bar (where present) indicates the fraction of residues that have poor fit to the electron density.

Mol	Chain	Length	Quality of chain
1	A	725	
2	B	44	

2 Entry composition

There are 7 unique types of molecules in this entry. The entry contains 5803 atoms, of which 0 are hydrogen and 0 are deuterium.

In the tables below, the ZeroOcc column contains the number of atoms modelled with zero occupancy, the AltConf column contains the number of residues with at least one atom in alternate conformation and the Trace column contains the number of residues modelled with at most 2 atoms.

- Molecule 1 is a protein called Reelin.

Mol	Chain	Residues	Atoms					ZeroOcc	AltConf	Trace
1	A	685	Total	C	N	O	S	0	2	0
			5419	3441	925	1017	36			

There are 12 discrepancies between the modelled and reference sequences:

Chain	Residue	Modelled	Actual	Comment	Reference
A	1946	GLY	-	EXPRESSION TAG	UNP Q60841
A	1947	ARG	-	EXPRESSION TAG	UNP Q60841
A	2101	ALA	CYS	ENGINEERED	UNP Q60841
A	2662	SER	-	EXPRESSION TAG	UNP Q60841
A	2663	ARG	-	EXPRESSION TAG	UNP Q60841
A	2664	LEU	-	EXPRESSION TAG	UNP Q60841
A	2665	GLU	-	EXPRESSION TAG	UNP Q60841
A	2666	ASN	-	EXPRESSION TAG	UNP Q60841
A	2667	LEU	-	EXPRESSION TAG	UNP Q60841
A	2668	TYR	-	EXPRESSION TAG	UNP Q60841
A	2669	PHE	-	EXPRESSION TAG	UNP Q60841
A	2670	GLN	-	EXPRESSION TAG	UNP Q60841

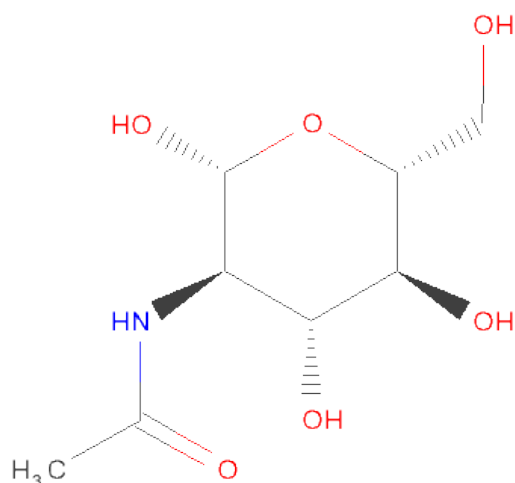
- Molecule 2 is a protein called Low-density lipoprotein receptor-related protein 8.

Mol	Chain	Residues	Atoms					ZeroOcc	AltConf	Trace
2	B	35	Total	C	N	O	S	0	0	0
			289	166	51	66	6			

There are 3 discrepancies between the modelled and reference sequences:

Chain	Residue	Modelled	Actual	Comment	Reference
B	40	GLY	-	EXPRESSION TAG	UNP Q14114
B	41	SER	-	EXPRESSION TAG	UNP Q14114
B	46	GLU	ASP	SEE REMARK 999	UNP Q14114

- Molecule 3 is SUGAR (N-ACETYL-D-GLUCOSAMINE) (three-letter code: NAG) (formula: $C_8H_{15}NO_6$).



Mol	Chain	Residues	Atoms				ZeroOcc	AltConf
3	A	1	Total	C	N	O	0	0
			14	8	1	5		
3	A	1	Total	C	N	O	0	0
			14	8	1	5		
3	A	1	Total	C	N	O	0	0
			14	8	1	5		

- Molecule 4 is a polymer of unknown type called SUGAR (2-MER).

Mol	Chain	Residues	Atoms				ZeroOcc	AltConf
4	A	2	Total	C	N	O	0	0
			28	16	2	10		

There are 12 discrepancies between the modelled and reference sequences:

Chain	Residue	Modelled	Actual	Comment	Reference
A	1946	GLY	-	EXPRESSION TAG	UNP Q60841
A	1947	ARG	-	EXPRESSION TAG	UNP Q60841
A	2101	ALA	CYS	ENGINEERED	UNP Q60841
A	2662	SER	-	EXPRESSION TAG	UNP Q60841
A	2663	ARG	-	EXPRESSION TAG	UNP Q60841
A	2664	LEU	-	EXPRESSION TAG	UNP Q60841
A	2665	GLU	-	EXPRESSION TAG	UNP Q60841
A	2666	ASN	-	EXPRESSION TAG	UNP Q60841
A	2667	LEU	-	EXPRESSION TAG	UNP Q60841

Continued on next page...

Continued from previous page...

Chain	Residue	Modelled	Actual	Comment	Reference
A	2668	TYR	-	EXPRESSION TAG	UNP Q60841
A	2669	PHE	-	EXPRESSION TAG	UNP Q60841
A	2670	GLN	-	EXPRESSION TAG	UNP Q60841

- Molecule 5 is CALCIUM ION (three-letter code: CA) (formula: Ca).

Mol	Chain	Residues	Atoms		ZeroOcc	AltConf
5	B	1	Total	Ca	0	0
			1	1		
5	A	4	Total	Ca	0	0
			4	4		

- Molecule 6 is ZINC ION (three-letter code: ZN) (formula: Zn).

Mol	Chain	Residues	Atoms		ZeroOcc	AltConf
6	A	1	Total	Zn	0	0
			1	1		

- Molecule 7 is water.

Mol	Chain	Residues	Atoms		ZeroOcc	AltConf
7	A	18	Total	O	0	0
			18	18		
7	B	1	Total	O	0	0
			1	1		

4 Data and refinement statistics

Property	Value	Source
Space group	P 1 21 1	Depositor
Cell constants a, b, c, α , β , γ	56.98Å 93.84Å 73.46Å 90.00° 107.41° 90.00°	Depositor
Resolution (Å)	46.93 – 2.60 46.92 – 2.60	Depositor EDS
% Data completeness (in resolution range)	96.5 (46.93-2.60) 96.4 (46.92-2.60)	Depositor EDS
R_{merge}	0.07	Depositor
R_{sym}	0.07	Depositor
$\langle I/\sigma(I) \rangle$ ¹	5.46 (at 2.61Å)	Xtriage
Refinement program	REFMAC 5.2.0019	Depositor
R, R_{free}	0.223 , 0.296 0.226 , 0.294	Depositor DCC
R_{free} test set	1135 reflections (5.45%)	DCC
Wilson B-factor (Å ²)	50.1	Xtriage
Anisotropy	0.150	Xtriage
Bulk solvent k_{sol} (e/Å ³), B_{sol} (Å ²)	0.32 , 35.2	EDS
Estimated twinning fraction	No twinning to report.	Xtriage
L-test for twinning	$\langle L \rangle = 0.48$, $\langle L^2 \rangle = 0.31$	Xtriage
Outliers	0 of 21972 reflections	Xtriage
F_o, F_c correlation	0.89	EDS
Total number of atoms	5803	wwPDB-VP
Average B, all atoms (Å ²)	57.0	wwPDB-VP

Xtriage's analysis on translational NCS is as follows: *The largest off-origin peak in the Patterson function is 7.19% of the height of the origin peak. No significant pseudotranslation is detected.*

¹Intensities estimated from amplitudes.

5 Model quality

5.1 Standard geometry

Bond lengths and bond angles in the following residue types are not validated in this section: ZN, CA, NAG

The Z score for a bond length (or angle) is the number of standard deviations the observed value is removed from the expected value. A bond length (or angle) with $|Z| > 5$ is considered an outlier worth inspection. RMSZ is the root-mean-square of all Z scores of the bond lengths (or angles).

Mol	Chain	Bond lengths		Bond angles	
		RMSZ	$\# Z > 5$	RMSZ	$\# Z > 5$
1	A	0.49	0/5569	0.60	0/7578
2	B	0.47	0/293	0.64	0/394
All	All	0.49	0/5862	0.61	0/7972

There are no bond length outliers.

There are no bond angle outliers.

There are no chirality outliers.

There are no planarity outliers.

5.2 Close contacts

In the following table, the Non-H and H(model) columns list the number of non-hydrogen atoms and hydrogen atoms in the chain respectively. The H(added) column lists the number of hydrogens added by MolProbity. The Clashes column lists the number of clashes within the asymmetric unit, and the number in parentheses is this value normalized per 1000 atoms of the molecule in the chain. The Symm-Clashes column gives symmetry related clashes, in the same way as for the Clashes column.

Mol	Chain	Non-H	H(model)	H(added)	Clashes	Symm-Clashes
1	A	5419	0	5134	76	0
2	B	289	0	231	5	0
3	A	42	0	39	0	0
4	A	28	0	25	0	0
5	A	4	0	0	0	0
5	B	1	0	0	0	0
6	A	1	0	0	0	0
7	A	18	0	0	1	0
7	B	1	0	0	0	0
All	All	5803	0	5429	81	0

Clashscore is defined as the number of clashes calculated for the entry per 1000 atoms (including hydrogens) of the entry. The overall clashscore for this entry is 7.

All (81) close contacts within the same asymmetric unit are listed below.

Atom-1	Atom-2	Distance(Å)	Clash(Å)
1:A:2221:LEU:HD12	1:A:2290:THR:HB	1.63	0.81
2:B:49:LYS:H	2:B:49:LYS:HD2	1.50	0.76
1:A:1985:TYR:O	1:A:2088:TRP:HD1	1.70	0.74
1:A:2055:LEU:HD11	1:A:2095:PHE:HD1	1.54	0.72
1:A:2416:LEU:HB3	1:A:2417:PRO:HD2	1.73	0.68
1:A:1976:GLY:HA2	1:A:2003:GLU:HG2	1.77	0.66
1:A:2195:CYS:HB3	1:A:2308:VAL:HG21	1.76	0.66
2:B:49:LYS:HD2	2:B:49:LYS:N	2.13	0.60
1:A:2611:MET:SD	1:A:2626:ILE:HD11	2.42	0.60
1:A:2022:ILE:HD13	1:A:2055:LEU:HD21	1.83	0.60
1:A:2231:MET:HB3	1:A:2277:ILE:HD13	1.85	0.58
1:A:2217:ARG:HD3	1:A:2218:ASP:O	2.04	0.57
1:A:2042:LEU:HD13	1:A:2108:TRP:CE2	2.39	0.57
1:A:2412:VAL:O	1:A:2428:GLN:HA	2.06	0.56
1:A:2630:PRO:HA	1:A:2633:LYS:HD2	1.89	0.54
1:A:2046:ARG:NH2	1:A:2100:LEU:O	2.41	0.54
1:A:2059:CYS:SG	1:A:2075:HIS:CE1	3.02	0.53
1:A:2055:LEU:HD11	1:A:2095:PHE:CD1	2.40	0.53
1:A:2137:CYS:O	1:A:2160:CYS:HB2	2.09	0.53
1:A:2562:LEU:CD1	1:A:2642:TRP:HB3	2.39	0.52
1:A:2074:HIS:HB2	1:A:2250:GLN:HE22	1.75	0.51
1:A:2230:PHE:HD2	1:A:2311:GLN:HB2	1.75	0.51
1:A:2563:LEU:O	1:A:2640:ARG:HA	2.10	0.51
1:A:2036:SER:HB3	1:A:2209:ASP:HB3	1.92	0.51
1:A:1983:CYS:O	1:A:1985:TYR:N	2.37	0.51
1:A:2029:GLY:HA2	1:A:2120:VAL:HG22	1.94	0.49
1:A:2212:ARG:HH12	1:A:2306:PRO:HA	1.78	0.48
1:A:2318:ILE:C	1:A:2320:GLY:H	2.16	0.48
1:A:2270:SER:O	1:A:2275:ARG:NH2	2.46	0.48
1:A:2206:PHE:HB3	1:A:2212:ARG:HD3	1.96	0.48
2:B:56:ASN:O	2:B:57:GLU:HB2	2.14	0.47
1:A:2268:SER:H	1:A:2271:SER:HB3	1.78	0.47
1:A:1964:PHE:CD2	1:A:1964:PHE:O	2.68	0.46
1:A:2056:LEU:HB3	1:A:2078:SER:HB3	1.97	0.46
1:A:2318:ILE:C	1:A:2320:GLY:N	2.68	0.46
1:A:2229:PHE:HA	1:A:2311:GLN:O	2.16	0.46
1:A:1963:ASP:HA	1:A:1995:SER:HB2	1.98	0.45
1:A:2047:ASP:CG	1:A:2050:ALA:HB3	2.36	0.45
1:A:2058:LEU:HB2	1:A:2077:SER:HB3	1.98	0.45

Continued on next page...

Continued from previous page...

Atom-1	Atom-2	Distance(Å)	Clash(Å)
1:A:2325:GLU:HG3	1:A:2477:TYR:HD1	1.80	0.45
1:A:2320:GLY:O	1:A:2372:ALA:CB	2.64	0.45
1:A:2416:LEU:O	1:A:2418:THR:N	2.49	0.45
1:A:2320:GLY:O	1:A:2372:ALA:HB2	2.17	0.45
1:A:2595:VAL:HG21	1:A:2654:TRP:CD2	2.52	0.44
1:A:2562:LEU:HD13	1:A:2642:TRP:HB3	1.98	0.44
2:B:72:CYS:O	2:B:73:LEU:HB2	2.17	0.44
1:A:2212:ARG:NH1	1:A:2306:PRO:HA	2.33	0.44
2:B:49:LYS:C	2:B:51:GLN:H	2.21	0.44
1:A:2522:ASN:N	1:A:2522:ASN:OD1	2.42	0.44
1:A:2434:ASP:OD1	1:A:2559:CYS:HB3	2.17	0.43
1:A:2074:HIS:HB2	1:A:2250:GLN:NE2	2.33	0.43
1:A:2052:TRP:CZ3	1:A:2107:ARG:HG2	2.52	0.43
1:A:2156:SER:HB2	1:A:2162:ILE:HD11	2.00	0.43
1:A:2488:GLY:HA2	1:A:2605:ILE:HD11	2.00	0.43
1:A:2170:LEU:O	1:A:2313:LEU:HA	2.18	0.43
1:A:2022:ILE:N	1:A:2022:ILE:HD12	2.34	0.43
1:A:2292:LEU:HD12	1:A:2314:ILE:CD1	2.49	0.43
1:A:2230:PHE:CD2	1:A:2311:GLN:HB2	2.54	0.42
1:A:2173:ASP:HB2	1:A:2175:GLU:HG2	2.01	0.42
1:A:2038:ASP:N	1:A:2039:PRO:CD	2.82	0.42
1:A:2328:PHE:O	1:A:2353:ASP:HB2	2.18	0.42
1:A:2420:VAL:C	1:A:2422:CYS:N	2.72	0.42
1:A:2319:SER:O	1:A:2320:GLY:C	2.57	0.42
1:A:2538:GLY:HA2	1:A:2554:HIS:O	2.20	0.42
1:A:2044:PHE:HA	1:A:2105:ARG:O	2.20	0.42
1:A:2273:VAL:HB	1:A:2275:ARG:NH2	2.35	0.41
1:A:2601:VAL:HG22	7:A:6004:HOH:O	2.19	0.41
1:A:2400:TYR:CE2	1:A:2409:HIS:HB2	2.56	0.41
1:A:2300:ASN:N	1:A:2300:ASN:OD1	2.53	0.41
1:A:2357:PHE:HB3	1:A:2364:ARG:HD3	2.02	0.41
1:A:2029:GLY:HA2	1:A:2120:VAL:CG2	2.51	0.41
1:A:2249:LEU:HD13	1:A:2294:TRP:CE2	2.56	0.41
1:A:2213:MET:HA	1:A:2294:TRP:O	2.21	0.41
1:A:2000:VAL:HA	1:A:2121:THR:HG23	2.02	0.41
1:A:2591:ARG:HA	1:A:2615:TYR:CD2	2.55	0.41
1:A:2616:ASP:OD1	1:A:2616:ASP:N	2.51	0.40
1:A:2174:PHE:CZ	1:A:2312:ILE:HD12	2.56	0.40
1:A:2381:ILE:HG22	1:A:2476:VAL:HG22	2.04	0.40
1:A:2245:GLN:HA	1:A:2246:PRO:HD3	1.97	0.40
1:A:2424:ARG:HD3	1:A:2424:ARG:HA	1.76	0.40
1:A:2397:GLU:HA	1:A:2397:GLU:OE2	2.21	0.40

There are no symmetry-related clashes.

5.3 Torsion angles

5.3.1 Protein backbone ⓘ

In the following table, the Percentiles column shows the percent Ramachandran outliers of the chain as a percentile score with respect to all X-ray entries followed by that with respect to entries of similar resolution. The Analysed column shows the number of residues for which the backbone conformation was analysed, and the total number of residues.

Mol	Chain	Analysed	Favoured	Allowed	Outliers	Percentiles	
1	A	679/725 (94%)	631 (93%)	44 (6%)	4 (1%)	33	63
2	B	33/44 (75%)	28 (85%)	4 (12%)	1 (3%)	7	10
All	All	712/769 (93%)	659 (93%)	48 (7%)	5 (1%)	30	58

All (5) Ramachandran outliers are listed below:

Mol	Chain	Res	Type
1	A	2272	ASN
1	A	2320	GLY
1	A	2421	GLU
1	A	2417	PRO
2	B	50	ASP

5.3.2 Protein sidechains ⓘ

In the following table, the Percentiles column shows the percent sidechain outliers of the chain as a percentile score with respect to all X-ray entries followed by that with respect to entries of similar resolution. The Analysed column shows the number of residues for which the sidechain conformation was analysed, and the total number of residues.

Mol	Chain	Analysed	Rotameric	Outliers	Percentiles	
1	A	599/634 (94%)	584 (98%)	15 (2%)	60	86
2	B	35/41 (85%)	34 (97%)	1 (3%)	55	83
All	All	634/675 (94%)	618 (98%)	16 (2%)	60	86

All (16) residues with a non-rotameric sidechain are listed below:

Mol	Chain	Res	Type
1	A	1963	ASP

Continued on next page...

Continued from previous page...

Mol	Chain	Res	Type
1	A	2032	THR
1	A	2181	ASP
1	A	2182	ARG
1	A	2195	CYS
1	A	2217	ARG
1	A	2253	LEU
1	A	2305	SER
1	A	2366	VAL
1	A	2386	SER
1	A	2414	ASP
1	A	2513	THR
1	A	2522	ASN
1	A	2559	CYS
1	A	2587	THR
2	B	49	LYS

Some sidechains can be flipped to improve hydrogen bonding and reduce clashes. There are no such sidechains identified.

5.3.3 RNA ⓘ

There are no RNA chains in this entry.

5.4 Non-standard residues in protein, DNA, RNA chains ⓘ

There are no non-standard protein/DNA/RNA residues in this entry.

5.5 Carbohydrates ⓘ

2 carbohydrates are modelled in this entry.

In the following table, the Counts columns list the number of bonds (or angles) for which Mogul statistics could be retrieved, the number of bonds (or angles) that are observed in the model and the number of bonds (or angles) that are defined in the chemical component dictionary. The Link column lists molecule types, if any, to which the group is linked. The Z score for a bond length (or angle) is the number of standard deviations the observed value is removed from the expected value. A bond length (or angle) with $|Z| > 2$ is considered an outlier worth inspection. RMSZ is the root-mean-square of all Z scores of the bond lengths (or angles).

Mol	Type	Chain	Res	Link	Bond lengths			Bond angles		
					Counts	RMSZ	$\# Z > 2$	Counts	RMSZ	$\# Z > 2$
4	NAG	A	3002	1,4	12,14,15	0.71	1 (8%)	15,19,21	0.71	0

Mol	Type	Chain	Res	Link	Bond lengths			Bond angles		
					Counts	RMSZ	# Z > 2	Counts	RMSZ	# Z > 2
4	NAG	A	3003	4	12,14,15	0.70	1 (8%)	15,19,21	1.34	2 (13%)

In the following table, the Chirals column lists the number of chiral outliers, the number of chiral centers analysed, the number of these observed in the model and the number defined in the chemical component dictionary. Similar counts are reported in the Torsion and Rings columns. '-' means no outliers of that kind were identified.

Mol	Type	Chain	Res	Link	Chirals	Torsions	Rings
4	NAG	A	3002	1,4	-	0/6/23/26	0/1/1/1
4	NAG	A	3003	4	-	0/6/23/26	0/1/1/1

All (2) bond length outliers are listed below:

Mol	Chain	Res	Type	Atoms	Z	Observed(Å)	Ideal(Å)
4	A	3002	NAG	O5-C5	-2.10	1.41	1.45
4	A	3003	NAG	O5-C5	-2.10	1.41	1.45

All (2) bond angle outliers are listed below:

Mol	Chain	Res	Type	Atoms	Z	Observed(°)	Ideal(°)
4	A	3003	NAG	O5-C5-C6	4.15	111.34	106.98
4	A	3003	NAG	C3-C2-N2	-2.62	107.77	111.76

There are no chirality outliers.

There are no torsion outliers.

There are no ring outliers.

5.6 Ligand geometry ⓘ

Of 9 ligands modelled in this entry, 6 are monoatomic - leaving 3 for Mogul analysis.

In the following table, the Counts columns list the number of bonds (or angles) for which Mogul statistics could be retrieved, the number of bonds (or angles) that are observed in the model and the number of bonds (or angles) that are defined in the chemical component dictionary. The Link column lists molecule types, if any, to which the group is linked. The Z score for a bond length (or angle) is the number of standard deviations the observed value is removed from the expected value. A bond length (or angle) with $|Z| > 2$ is considered an outlier worth inspection. RMSZ is the root-mean-square of all Z scores of the bond lengths (or angles).

Mol	Type	Chain	Res	Link	Bond lengths			Bond angles		
					Counts	RMSZ	# Z > 2	Counts	RMSZ	# Z > 2
3	NAG	A	3001	1	12,14,15	0.70	1 (8%)	15,19,21	0.93	0
3	NAG	A	3004	1	12,14,15	0.68	1 (8%)	15,19,21	0.91	0
3	NAG	A	3005	1	12,14,15	0.69	1 (8%)	15,19,21	0.77	0

In the following table, the Chirals column lists the number of chiral outliers, the number of chiral centers analysed, the number of these observed in the model and the number defined in the chemical component dictionary. Similar counts are reported in the Torsion and Rings columns. '-' means no outliers of that kind were identified.

Mol	Type	Chain	Res	Link	Chirals	Torsions	Rings
3	NAG	A	3001	1	-	0/6/23/26	0/1/1/1
3	NAG	A	3004	1	-	0/6/23/26	0/1/1/1
3	NAG	A	3005	1	-	0/6/23/26	0/1/1/1

All (3) bond length outliers are listed below:

Mol	Chain	Res	Type	Atoms	Z	Observed(Å)	Ideal(Å)
3	A	3001	NAG	O5-C5	-2.09	1.41	1.45
3	A	3005	NAG	O5-C5	-2.06	1.41	1.45
3	A	3004	NAG	O5-C5	-2.04	1.41	1.45

There are no bond angle outliers.

There are no chirality outliers.

There are no torsion outliers.

There are no ring outliers.

5.7 Other polymers ⓘ

There are no such residues in this entry.

5.8 Polymer linkage issues

There are no chain breaks in this entry.

6 Fit of model and data ⓘ

6.1 Protein, DNA and RNA chains ⓘ

In the following table, the column labelled ‘#RSRZ> 2’ contains the number (and percentage) of RSRZ outliers, followed by percent RSRZ outliers for the chain as percentile scores relative to all X-ray entries and entries of similar resolution. The OWAB column contains the minimum, median, 95th percentile and maximum values of the occupancy-weighted average B-factor per residue. The column labelled ‘Q< 0.9’ lists the number of (and percentage) of residues with an average occupancy less than 0.9.

Mol	Chain	Analysed	<RSRZ>	#RSRZ>2	OWAB(Å ²)	Q<0.9
1	A	685/725 (94%)	0.48	38 (5%) 24 20	49, 57, 64, 71	0
2	B	35/44 (79%)	0.88	4 (11%) 6 4	54, 57, 60, 60	0
All	All	720/769 (93%)	0.50	42 (5%) 23 19	49, 57, 64, 71	0

All (42) RSRZ outliers are listed below:

Mol	Chain	Res	Type	RSRZ
1	A	2299	GLU	5.8
2	B	81	CYS	5.6
1	A	1964	PHE	5.1
1	A	2200	SER	4.5
1	A	2416	LEU	4.5
1	A	1986	SER	4.2
2	B	50	ASP	4.1
1	A	2237	LYS	3.8
1	A	2427	LEU	3.5
1	A	2176	GLY	3.2
1	A	2058	LEU	3.2
1	A	2275	ARG	3.1
1	A	2298	SER	3.1
1	A	2420	VAL	3.1
1	A	2033	ASP	3.0
1	A	2236	GLY	2.8
1	A	2375	GLU	2.8
1	A	2302	HIS	2.6
1	A	2150	ILE	2.6
1	A	2414	ASP	2.5
1	A	2444	LEU	2.5
1	A	2369	THR	2.5
1	A	2198	LEU	2.4
2	B	79	ASP	2.4

Continued on next page...

Continued from previous page...

Mol	Chain	Res	Type	RSRZ
1	A	2158	PRO	2.4
1	A	2186	MET	2.3
1	A	2242	PRO	2.3
1	A	2243	ARG	2.3
1	A	2084	THR	2.3
1	A	2201	GLY	2.3
1	A	2230	PHE	2.2
1	A	2098	LEU	2.2
1	A	2197	ILE	2.2
1	A	2526	ALA	2.2
1	A	2211	LEU	2.2
2	B	65	ARG	2.1
1	A	2054	LEU	2.1
1	A	2082	ALA	2.1
1	A	2397	GLU	2.1
1	A	2285	ALA	2.1
1	A	2614	PHE	2.0
1	A	2331	LEU	2.0

6.2 Non-standard residues in protein, DNA, RNA chains ⓘ

There are no non-standard protein/DNA/RNA residues in this entry.

6.3 Carbohydrates ⓘ

In the following table, the Atoms column lists the number of modelled atoms in the group and the number defined in the chemical component dictionary. LLDF column lists the quality of electron density of the group with respect to its neighbouring residues in protein, DNA or RNA chains. The B-factors column lists the minimum, median, 95th percentile and maximum values of B factors of atoms in the group. The column labelled 'Q< 0.9' lists the number of atoms with occupancy less than 0.9.

Mol	Type	Chain	Res	Atoms	RSR	LLDF	B-factors(Å ²)	Q<0.9
4	NAG	A	3003	14/15	0.28	4.10	39,43,44,44	0
4	NAG	A	3002	14/15	0.22	1.65	44,46,47,47	0

6.4 Ligands ⓘ

In the following table, the Atoms column lists the number of modelled atoms in the group and the number defined in the chemical component dictionary. LLDF column lists the quality of electron density of the group with respect to its neighbouring residues in protein, DNA or RNA chains.

The B-factors column lists the minimum, median, 95th percentile and maximum values of B factors of atoms in the group. The column labelled 'Q< 0.9' lists the number of atoms with occupancy less than 0.9.

Mol	Type	Chain	Res	Atoms	RSR	LLDF	B-factors(Å ²)	Q<0.9
3	NAG	A	3005	14/15	0.23	0.44	57,59,63,63	0
3	NAG	A	3004	14/15	0.17	-0.16	63,65,67,67	0
5	CA	A	4004	1/1	0.17	-0.19	53,53,53,53	0
5	CA	A	4003	1/1	0.16	-0.26	55,55,55,55	0
5	CA	A	4001	1/1	0.16	-0.84	52,52,52,52	0
6	ZN	A	4005	1/1	0.16	-0.96	118,118,118,118	0
5	CA	B	5001	1/1	0.11	-1.02	55,55,55,55	0
3	NAG	A	3001	14/15	0.18	-1.15	50,52,53,53	0
5	CA	A	4002	1/1	0.10	-1.65	56,56,56,56	0

6.5 Other polymers ⓘ

There are no such residues in this entry.