



Full wwPDB X-ray Structure Validation Report

Feb 26, 2014 – 03:06 PM GMT

PDB ID : 2A85
Title : Crystal Structure of the G81A mutant of the Active Chimera of (S)-Mandelate Dehydrogenase in complex with its substrate 2-hydroxyoctanoate
Authors : Sukumar, N.; Xu, Y.; Mitra, B.; Mathews, F.S.
Deposited on : 2005-07-07
Resolution : 2.50 Å(reported)

This is a full wwPDB validation report for a publicly released PDB entry.
We welcome your comments at validation@mail.wwpdb.org
A user guide is available at <http://wwpdb.org/ValidationPDFNotes.html>

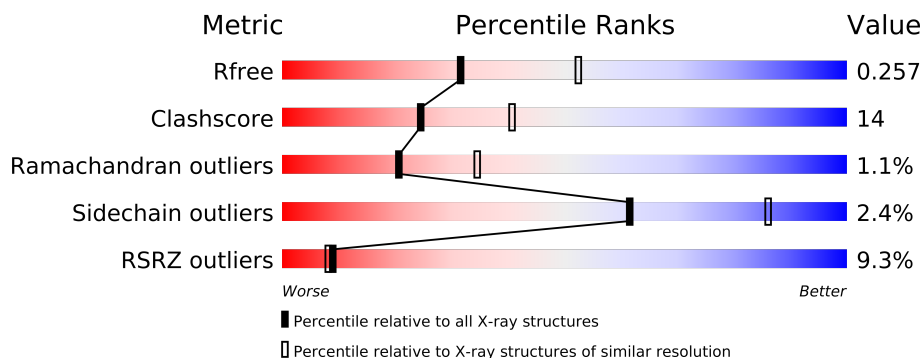
The following versions of software and data (see [references](#)) were used in the production of this report:

MolProbity : 4.02b-467
Mogul : 1.15 2013
Xtriage (Phenix) : dev-1323
EDS : stable22639
Percentile statistics : 21963
Refmac : 5.8.0049
CCP4 : 6.3.0 (Settle)
Ideal geometry (proteins) : Engh & Huber (2001)
Ideal geometry (DNA, RNA) : Parkinson et. al. (1996)
Validation Pipeline (wwPDB-VP) : stable22683

1 Overall quality at a glance

The reported resolution of this entry is 2.50 Å.

Percentile scores (ranging between 0-100) for global validation metrics of the entry are shown in the following graphic. The table shows the number of entries on which the scores are based.



Metric	Whole archive (#Entries)	Similar resolution (#Entries, resolution range(Å))
R_{free}	66092	2784 (2.50-2.50)
Clashscore	79885	3562 (2.50-2.50)
Ramachandran outliers	78287	3480 (2.50-2.50)
Sidechain outliers	78261	3482 (2.50-2.50)
RSRZ outliers	66119	2785 (2.50-2.50)

The table below summarises the geometric issues observed across the polymeric chains and their fit to the electron density. The red, orange, yellow and green segments on the lower bar indicate the fraction of residues that contain outliers for ≥ 3 , 2, 1 and 0 types of geometric quality criteria. The upper red bar (where present) indicates the fraction of residues that have poor fit to the electron density.

Mol	Chain	Length	Quality of chain
1	A	380	

The following table lists non-polymeric compounds that are outliers for geometric or electron-density-fit criteria:

Mol	Type	Chain	Res	Geometry	Electron density
4	HOC	A	462	-	X

2 Entry composition i

There are 5 unique types of molecules in this entry. The entry contains 2928 atoms, of which 0 are hydrogen and 0 are deuterium.

In the tables below, the ZeroOcc column contains the number of atoms modelled with zero occupancy, the AltConf column contains the number of residues with at least one atom in alternate conformation and the Trace column contains the number of residues modelled with at most 2 atoms.

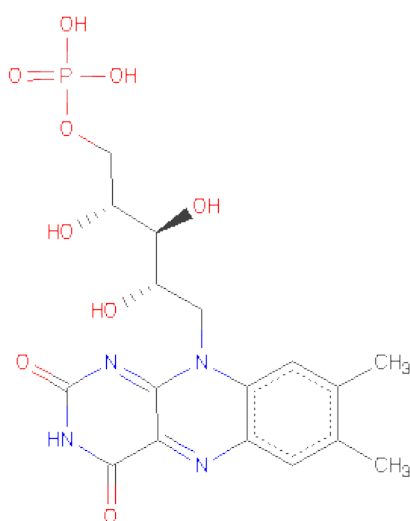
- Molecule 1 is a protein called L(+)-mandelate dehydrogenase.

Mol	Chain	Residues	Atoms					ZeroOcc	AltConf	Trace
			Total	C	N	O	S			
1	A	353	2748	1740	488	507	13	48	0	0

There are 7 discrepancies between the modelled and reference sequences:

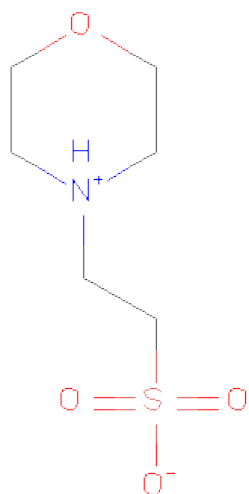
Chain	Residue	Modelled	Actual	Comment	Reference
A	81	ALA	GLY	ENGINEERED	UNP P20932
A	375	HIS	-	EXPRESSION TAG	UNP P20932
A	376	HIS	-	EXPRESSION TAG	UNP P20932
A	377	HIS	-	EXPRESSION TAG	UNP P20932
A	378	HIS	-	EXPRESSION TAG	UNP P20932
A	379	HIS	-	EXPRESSION TAG	UNP P20932
A	380	HIS	-	EXPRESSION TAG	UNP P20932

- Molecule 2 is FLAVIN MONONUCLEOTIDE (three-letter code: FMN) (formula: C₁₇H₂₁N₄O₉P).



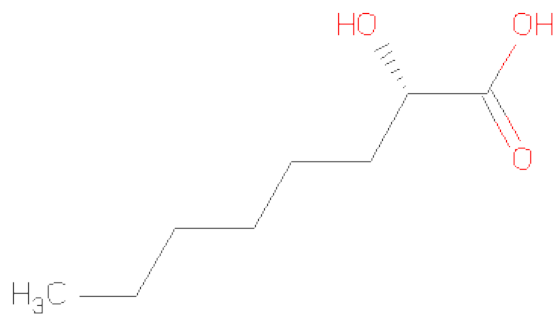
Mol	Chain	Residues	Atoms					ZeroOcc	AltConf
2	A	1	Total	C	N	O	P	0	0
			31	17	4	9	1		

- Molecule 3 is 2-(N-MORPHOLINO)-ETHANESULFONICACID (three-letter code: MES) (formula: $C_6H_{13}NO_4S$).



Mol	Chain	Residues	Atoms					ZeroOcc	AltConf
3	A	1	Total	C	N	O	S	0	0
			12	6	1	4	1		

- Molecule 4 is (2S)-2-HYDROXYOCTANOICACID (three-letter code: HOC) (formula: $C_8H_{16}O_3$).



Mol	Chain	Residues	Atoms			ZeroOcc	AltConf
4	A	1	Total	C	O	0	0
			11	8	3		

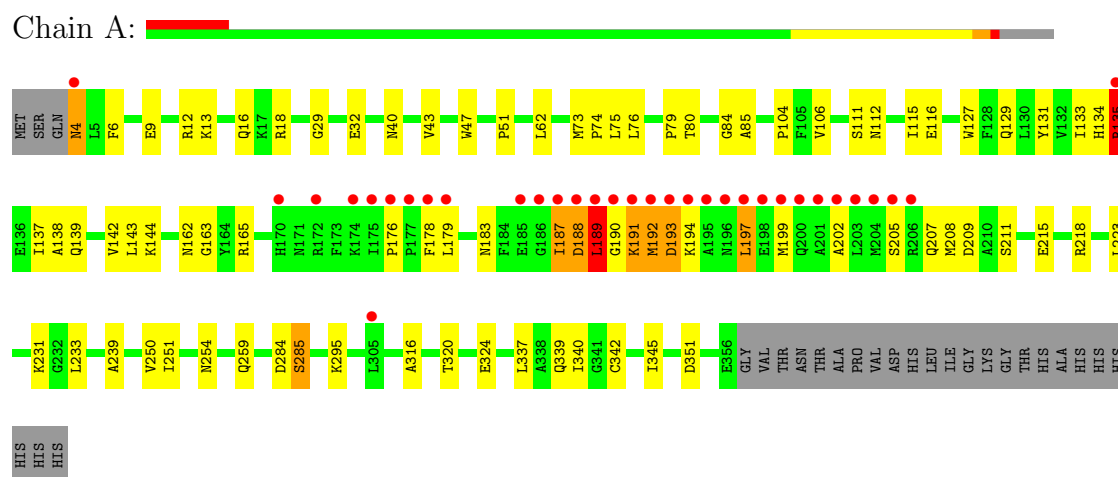
- Molecule 5 is water.

Mol	Chain	Residues	Atoms		ZeroOcc	AltConf
5	A	126	Total	O	0	0
			126	126		

3 Residue-property plots i

These plots are drawn for all protein, RNA and DNA chains in the entry. The first graphic for a chain summarises the proportions of errors displayed in the second graphic. The second graphic shows the sequence view annotated by issues in geometry and electron density. Residues are color-coded according to the number of geometric quality criteria for which they contain at least one outlier: green = 0, yellow = 1, orange = 2 and red = 3 or more. A red dot above a residue indicates a poor fit to the electron density ($\text{RSRZ} > 2$). Stretches of 2 or more consecutive residues without any outlier are shown as a green connector. Residues present in the sample, but not in the model, are shown in grey.

- Molecule 1: L(+)-mandelate dehydrogenase



4 Data and refinement statistics

Property	Value	Source
Space group	I 4	Depositor
Cell constants a, b, c, α , β , γ	98.80Å 98.80Å 87.40Å 90.00° 90.00° 90.00°	Depositor
Resolution (Å)	50.00 – 2.50 39.43 – 2.50	Depositor EDS
% Data completeness (in resolution range)	(Not available) (50.00-2.50) 94.2 (39.43-2.50)	Depositor EDS
R_{merge}	0.12	Depositor
R_{sym}	(Not available)	Depositor
$\langle I/\sigma(I) \rangle$ ¹	2.14 (at 2.51Å)	Xtriage
Refinement program	CNS 1.1	Depositor
R, R_{free}	0.189 , 0.259 0.190 , 0.257	Depositor DCC
R_{free} test set	680 reflections (4.94%)	DCC
Wilson B-factor (Å ²)	36.6	Xtriage
Anisotropy	0.340	Xtriage
Bulk solvent k_{sol} (e/Å ³), B_{sol} (Å ²)	0.33 , 27.8	EDS
Estimated twinning fraction	0.041 for -k,-h,-l	Xtriage
L-test for twinning	$\langle L \rangle = 0.49$, $\langle L^2 \rangle = 0.32$	Xtriage
Outliers	0 of 14637 reflections	Xtriage
F_o, F_c correlation	0.95	EDS
Total number of atoms	2928	wwPDB-VP
Average B, all atoms (Å ²)	44.0	wwPDB-VP

Xtriage's analysis on translational NCS is as follows: *The largest off-origin peak in the Patterson function is 5.19% of the height of the origin peak. No significant pseudotranslation is detected.*

¹Intensities estimated from amplitudes.

5 Model quality i

5.1 Standard geometry i

Bond lengths and bond angles in the following residue types are not validated in this section: FMN, HOC, MES

The Z score for a bond length (or angle) is the number of standard deviations the observed value is removed from the expected value. A bond length (or angle) with $|Z| > 5$ is considered an outlier worth inspection. RMSZ is the root-mean-square of all Z scores of the bond lengths (or angles).

Mol	Chain	Bond lengths		Bond angles	
		RMSZ	$\# Z > 5$	RMSZ	$\# Z > 5$
1	A	0.38	0/2797	0.71	5/3784 (0.1%)

There are no bond length outliers.

All (5) bond angle outliers are listed below:

Mol	Chain	Res	Type	Atoms	Z	Observed(°)	Ideal(°)
1	A	193	ASP	CB-CA-C	7.97	126.33	110.40
1	A	191	LYS	CA-C-N	-6.79	102.27	117.20
1	A	135	ARG	CG-CD-NE	-6.40	98.36	111.80
1	A	4	ASN	N-CA-C	-6.23	94.17	111.00
1	A	193	ASP	CB-CG-OD2	5.68	123.41	118.30

There are no chirality outliers.

There are no planarity outliers.

5.2 Close contacts i

In the following table, the Non-H and H(model) columns list the number of non-hydrogen atoms and hydrogen atoms in the chain respectively. The H(added) column lists the number of hydrogens added by MolProbity. The Clashes column lists the number of clashes within the asymmetric unit, and the number in parentheses is this value normalized per 1000 atoms of the molecule in the chain. The Symm-Clashes column gives symmetry related clashes, in the same way as for the Clashes column.

Mol	Chain	Non-H	H(model)	H(added)	Clashes	Symm-Clashes
1	A	2748	0	2783	77	0
2	A	31	0	19	2	0
3	A	12	0	13	0	0
4	A	11	0	16	6	0

Continued on next page...

Continued from previous page...

Mol	Chain	Non-H	H(model)	H(added)	Clashes	Symm-Clashes
5	A	126	0	0	3	0
All	All	2928	0	2831	77	0

Clashscore is defined as the number of clashes calculated for the entry per 1000 atoms (including hydrogens) of the entry. The overall clashscore for this entry is 14.

All (77) close contacts within the same asymmetric unit are listed below.

Atom-1	Atom-2	Distance(Å)	Clash(Å)
1:A:40:ASN:HD21	1:A:254:ASN:HD21	1.15	0.92
1:A:190:GLY:O	1:A:192:MET:SD	2.32	0.87
1:A:84:GLY:H	1:A:112:ASN:HD22	1.18	0.87
1:A:116:GLU:CG	1:A:144:LYS:HE3	2.08	0.83
1:A:116:GLU:HG2	1:A:144:LYS:HE3	1.67	0.75
1:A:193:ASP:O	1:A:197:LEU:CD2	2.35	0.75
1:A:193:ASP:O	1:A:197:LEU:HD22	1.89	0.72
1:A:209:ASP:OD1	1:A:211:SER:HB3	1.91	0.71
1:A:129:GLN:NE2	2:A:390:FMN:HN3	1.89	0.70
1:A:165:ARG:HH22	4:A:462:HOC:H62	1.55	0.69
1:A:133:ILE:N	1:A:133:ILE:HD12	2.10	0.67
1:A:143:LEU:HD21	1:A:223:LEU:HD11	1.76	0.66
1:A:84:GLY:N	1:A:112:ASN:HD22	1.93	0.66
1:A:84:GLY:H	1:A:112:ASN:ND2	1.90	0.65
1:A:194:LYS:O	1:A:197:LEU:HB2	1.97	0.64
1:A:134:HIS:HD2	1:A:137:ILE:HG13	1.63	0.64
1:A:12:ARG:HH11	1:A:12:ARG:HG2	1.63	0.64
1:A:284:ASP:O	1:A:285:SER:HB2	1.97	0.64
1:A:188:ASP:O	1:A:189:LEU:HB2	2.01	0.61
1:A:138:ALA:O	1:A:142:VAL:HG23	2.01	0.60
1:A:106:VAL:HG22	1:A:127:TRP:HB2	1.85	0.59
1:A:320:THR:O	1:A:324:GLU:HG3	2.02	0.58
1:A:205:SER:C	1:A:207:GLN:H	2.06	0.58
1:A:189:LEU:C	1:A:191:LYS:H	2.08	0.57
1:A:193:ASP:O	1:A:197:LEU:HD23	2.03	0.57
1:A:133:ILE:H	1:A:133:ILE:HD12	1.69	0.57
1:A:135:ARG:NH1	1:A:209:ASP:OD2	2.39	0.55
1:A:134:HIS:CD2	1:A:137:ILE:HG13	2.42	0.54
1:A:133:ILE:HG22	1:A:202:ALA:HB1	1.89	0.54
1:A:165:ARG:CZ	4:A:462:HOC:H82	2.38	0.54
1:A:187:ILE:HG22	1:A:187:ILE:O	2.08	0.53
1:A:75:LEU:C	1:A:76:LEU:HD12	2.29	0.53
1:A:115:ILE:HG13	1:A:183:ASN:OD1	2.08	0.53
1:A:18:ARG:NH1	1:A:316:ALA:O	2.41	0.52

Continued on next page...

Continued from previous page...

Atom-1	Atom-2	Distance(Å)	Clash(Å)
1:A:111:SER:HA	5:A:978:HOH:O	2.08	0.52
1:A:284:ASP:O	1:A:285:SER:CB	2.59	0.51
1:A:74:PRO:HG2	1:A:345:ILE:HD13	1.93	0.51
1:A:215:GLU:HA	1:A:218:ARG:HD2	1.93	0.51
1:A:233:LEU:HD12	1:A:250:VAL:HB	1.94	0.50
1:A:134:HIS:CD2	1:A:199:MET:HG3	2.47	0.49
1:A:12:ARG:HG2	1:A:12:ARG:NH1	2.25	0.49
1:A:62:LEU:O	1:A:73:MET:HA	2.13	0.49
1:A:29:GLY:HA3	5:A:925:HOH:O	2.12	0.49
1:A:139:GLN:O	1:A:143:LEU:HD23	2.13	0.48
1:A:116:GLU:CD	1:A:116:GLU:H	2.18	0.47
1:A:231:LYS:HA	1:A:251:ILE:HB	1.97	0.47
1:A:133:ILE:HG13	1:A:208:MET:HG2	1.96	0.46
1:A:40:ASN:ND2	1:A:254:ASN:HD21	1.96	0.46
1:A:76:LEU:HG	1:A:104:PRO:HD2	1.98	0.45
1:A:74:PRO:HG2	1:A:345:ILE:CD1	2.47	0.45
1:A:47:TRP:O	1:A:295:LYS:HE2	2.17	0.45
1:A:74:PRO:CG	1:A:345:ILE:HD13	2.47	0.45
1:A:9:GLU:HG3	1:A:13:LYS:HE3	1.99	0.44
1:A:205:SER:C	1:A:207:GLN:N	2.70	0.44
1:A:9:GLU:OE1	1:A:9:GLU:HA	2.18	0.44
1:A:12:ARG:HH12	1:A:16:GLN:NE2	2.16	0.43
1:A:197:LEU:C	1:A:199:MET:H	2.21	0.43
1:A:259:GLN:HE22	4:A:462:HOC:H83	1.83	0.43
1:A:163:GLY:H	4:A:462:HOC:H83	1.84	0.43
1:A:139:GLN:HG3	1:A:223:LEU:HD21	2.01	0.43
1:A:187:ILE:O	1:A:188:ASP:O	2.37	0.43
1:A:131:TYR:HB3	1:A:208:MET:SD	2.59	0.42
1:A:85:ALA:HA	1:A:179:LEU:HD11	2.00	0.42
1:A:162:ASN:HB3	4:A:462:HOC:H81	2.01	0.42
1:A:165:ARG:NH2	4:A:462:HOC:H82	2.34	0.42
1:A:74:PRO:CD	1:A:345:ILE:HD13	2.50	0.42
1:A:51:PRO:HB3	1:A:340:ILE:HA	2.01	0.42
1:A:284:ASP:C	1:A:284:ASP:OD1	2.58	0.41
1:A:176:PRO:HB2	1:A:179:LEU:HD12	2.02	0.41
1:A:176:PRO:HB3	1:A:178:PHE:CE1	2.55	0.41
1:A:32:GLU:HG3	5:A:971:HOH:O	2.19	0.41
1:A:80:THR:HA	2:A:390:FMN:N5	2.36	0.41
1:A:189:LEU:C	1:A:191:LYS:N	2.73	0.41
1:A:337:LEU:HB3	1:A:342:CYS:O	2.21	0.41
1:A:79:PRO:HB3	1:A:106:VAL:HG12	2.03	0.40
1:A:4:ASN:OD1	1:A:6:PHE:HE2	2.04	0.40

Continued on next page...

Continued from previous page...

Atom-1	Atom-2	Distance(Å)	Clash(Å)
1:A:233:LEU:HD13	1:A:239:ALA:HA	2.04	0.40

There are no symmetry-related clashes.

5.3 Torsion angles

5.3.1 Protein backbone ⓘ

In the following table, the Percentiles column shows the percent Ramachandran outliers of the chain as a percentile score with respect to all X-ray entries followed by that with respect to entries of similar resolution. The Analysed column shows the number of residues for which the backbone conformation was analysed, and the total number of residues.

Mol	Chain	Analysed	Favoured	Allowed	Outliers	Percentiles	
1	A	351/380 (92%)	329 (94%)	18 (5%)	4 (1%)	21	34

All (4) Ramachandran outliers are listed below:

Mol	Chain	Res	Type
1	A	188	ASP
1	A	189	LEU
1	A	285	SER
1	A	187	ILE

5.3.2 Protein sidechains ⓘ

In the following table, the Percentiles column shows the percent sidechain outliers of the chain as a percentile score with respect to all X-ray entries followed by that with respect to entries of similar resolution. The Analysed column shows the number of residues for which the sidechain conformation was analysed, and the total number of residues.

Mol	Chain	Analysed	Rotameric	Outliers	Percentiles	
1	A	288/311 (93%)	281 (98%)	7 (2%)	61	86

All (7) residues with a non-rotameric sidechain are listed below:

Mol	Chain	Res	Type
1	A	43	VAL
1	A	135	ARG
1	A	189	LEU

Continued on next page...

Continued from previous page...

Mol	Chain	Res	Type
1	A	192	MET
1	A	197	LEU
1	A	339	GLN
1	A	351	ASP

Some sidechains can be flipped to improve hydrogen bonding and reduce clashes. All (13) such sidechains are listed below:

Mol	Chain	Res	Type
1	A	16	GLN
1	A	40	ASN
1	A	46	GLN
1	A	83	ASN
1	A	112	ASN
1	A	129	GLN
1	A	134	HIS
1	A	162	ASN
1	A	200	GLN
1	A	259	GLN
1	A	272	GLN
1	A	339	GLN
1	A	355	ASN

5.3.3 RNA ⓘ

There are no RNA chains in this entry.

5.4 Non-standard residues in protein, DNA, RNA chains ⓘ

There are no non-standard protein/DNA/RNA residues in this entry.

5.5 Carbohydrates ⓘ

There are no carbohydrates in this entry.

5.6 Ligand geometry ⓘ

3 ligands are modelled in this entry.

In the following table, the Counts columns list the number of bonds (or angles) for which Mogul statistics could be retrieved, the number of bonds (or angles) that are observed in the model and the number of bonds (or angles) that are defined in the chemical component dictionary. The Link column lists molecule types, if any, to which the group is linked. The Z score for a bond length (or angle) is the number of standard deviations the observed value is removed from the expected value. A bond length (or angle) with $|Z| > 2$ is considered an outlier worth inspection. RMSZ is the root-mean-square of all Z scores of the bond lengths (or angles).

Mol	Type	Chain	Res	Link	Bond lengths			Bond angles		
					Counts	RMSZ	# Z > 2	Counts	RMSZ	# Z > 2
2	FMN	A	390	-	33,33,33	3.10	16 (48%)	46,50,50	2.69	9 (19%)
4	HOC	A	462	-	10,10,10	1.67	2 (20%)	11,11,11	1.16	1 (9%)
3	MES	A	890	-	12,12,12	3.58	5 (41%)	16,16,16	1.05	0

In the following table, the Chirals column lists the number of chiral outliers, the number of chiral centers analysed, the number of these observed in the model and the number defined in the chemical component dictionary. Similar counts are reported in the Torsion and Rings columns. '-' means no outliers of that kind were identified.

Mol	Type	Chain	Res	Link	Chirals	Torsions	Rings
2	FMN	A	390	-	-	0/18/18/18	0/0/3/3
4	HOC	A	462	-	-	0/10/10/10	0/0/0/0
3	MES	A	890	-	-	0/6/14/14	0/1/1/1

All (23) bond length outliers are listed below:

Mol	Chain	Res	Type	Atoms	Z	Observed(Å)	Ideal(Å)
3	A	890	MES	O1S-S	9.35	1.67	1.45
2	A	390	FMN	C4A-C10	7.29	1.53	1.40
2	A	390	FMN	C9A-N10	6.63	1.48	1.38
2	A	390	FMN	C4-C4A	5.54	1.50	1.41
3	A	890	MES	O2S-S	5.20	1.57	1.45
2	A	390	FMN	C9A-C5A	5.13	1.53	1.42
2	A	390	FMN	C2-N3	4.98	1.47	1.37
3	A	890	MES	O3S-S	4.75	1.56	1.45
2	A	390	FMN	C8-C7	4.68	1.54	1.40
2	A	390	FMN	C9-C9A	4.36	1.49	1.40
4	A	462	HOC	C2-C1	4.24	1.58	1.52
2	A	390	FMN	C4-N3	3.87	1.43	1.37
2	A	390	FMN	C6-C5A	3.57	1.46	1.41
2	A	390	FMN	C5A-N5	3.55	1.40	1.35
2	A	390	FMN	C6-C7	3.49	1.47	1.37
2	A	390	FMN	O2-C2	-2.82	1.17	1.23
3	A	890	MES	C3-C2	2.73	1.57	1.51

Continued on next page...

Continued from previous page...

Mol	Chain	Res	Type	Atoms	Z	Observed(Å)	Ideal(Å)
2	A	390	FMN	C10-N10	2.55	1.44	1.38
2	A	390	FMN	O3'-C3'	2.52	1.49	1.43
2	A	390	FMN	O2'-C2'	-2.46	1.37	1.43
2	A	390	FMN	C1'-C2'	2.30	1.53	1.51
4	A	462	HOC	O1A-C1	2.26	1.38	1.30
3	A	890	MES	C5-C6	2.23	1.56	1.51

All (10) bond angle outliers are listed below:

Mol	Chain	Res	Type	Atoms	Z	Observed(°)	Ideal(°)
2	A	390	FMN	C4A-C10-N10	-12.76	114.14	120.51
2	A	390	FMN	C2-N1-C10	6.55	121.58	114.98
2	A	390	FMN	C4A-N5-C5A	4.79	122.07	116.69
2	A	390	FMN	P-O5'-C5'	4.44	131.03	118.19
2	A	390	FMN	C9-C9A-N10	2.84	127.71	121.59
2	A	390	FMN	C9A-N10-C10	2.68	124.40	121.77
2	A	390	FMN	C10-C4A-N5	2.48	123.47	120.45
2	A	390	FMN	C8-C9-C9A	2.42	124.69	119.81
4	A	462	HOC	C3-C2-C1	2.30	117.23	109.56
2	A	390	FMN	C4A-C10-N1	2.27	125.00	122.73

There are no chirality outliers.

There are no torsion outliers.

There are no ring outliers.

5.7 Other polymers ⓘ

There are no such residues in this entry.

5.8 Polymer linkage issues

There are no chain breaks in this entry.

6 Fit of model and data ⓘ

6.1 Protein, DNA and RNA chains ⓘ

In the following table, the column labelled ‘#RSRZ> 2’ contains the number (and percentage) of RSRZ outliers, followed by percent RSRZ outliers for the chain as percentile scores relative to all X-ray entries and entries of similar resolution. The OWAB column contains the minimum, median, 95th percentile and maximum values of the occupancy-weighted average B-factor per residue. The column labelled ‘Q< 0.9’ lists the number of (and percentage) of residues with an average occupancy less than 0.9.

Mol	Chain	Analysed	<RSRZ>	#RSRZ>2	OWAB(Å ²)	Q<0.9
1	A	353/380 (92%)	0.25	33 (9%) 9 8	21, 38, 101, 124	13 (3%)

All (33) RSRZ outliers are listed below:

Mol	Chain	Res	Type	RSRZ
1	A	199	MET	7.2
1	A	190	GLY	7.1
1	A	188	ASP	5.8
1	A	197	LEU	5.4
1	A	204	MET	5.3
1	A	177	PRO	5.3
1	A	192	MET	5.0
1	A	201	ALA	4.9
1	A	196	ASN	4.9
1	A	189	LEU	4.8
1	A	194	LYS	4.7
1	A	193	ASP	4.6
1	A	187	ILE	4.5
1	A	198	GLU	4.5
1	A	178	PHE	4.0
1	A	195	ALA	4.0
1	A	186	GLY	3.9
1	A	200	GLN	3.5
1	A	176	PRO	3.5
1	A	185	GLU	3.4
1	A	205	SER	3.2
1	A	202	ALA	3.1
1	A	206	ARG	3.1
1	A	175	ILE	3.0
1	A	174	LYS	2.8
1	A	172	ARG	2.7
1	A	170	HIS	2.6

Continued on next page...

Continued from previous page...

Mol	Chain	Res	Type	RSRZ
1	A	4	ASN	2.5
1	A	203	LEU	2.3
1	A	305	LEU	2.1
1	A	135	ARG	2.0
1	A	191	LYS	2.0
1	A	179	LEU	2.0

6.2 Non-standard residues in protein, DNA, RNA chains ⓘ

There are no non-standard protein/DNA/RNA residues in this entry.

6.3 Carbohydrates ⓘ

There are no carbohydrates in this entry.

6.4 Ligands ⓘ

In the following table, the Atoms column lists the number of modelled atoms in the group and the number defined in the chemical component dictionary. LLDF column lists the quality of electron density of the group with respect to its neighbouring residues in protein, DNA or RNA chains. The B-factors column lists the minimum, median, 95th percentile and maximum values of B factors of atoms in the group. The column labelled 'Q< 0.9' lists the number of atoms with occupancy less than 0.9.

Mol	Type	Chain	Res	Atoms	RSR	LLDF	B-factors(Å ²)	Q<0.9
4	HOC	A	462	11/11	0.46	7.04	65,69,77,78	0
3	MES	A	890	12/12	0.13	0.81	30,33,37,37	0
2	FMN	A	390	31/31	0.22	0.51	25,28,31,34	0

6.5 Other polymers ⓘ

There are no such residues in this entry.