



# Full wwPDB X-ray Structure Validation Report

Feb 28, 2014 – 04:08 AM GMT

PDB ID : 4A8P  
Title : Crystal structure of putrescine transcarbamylase from *Enterococcus faecalis* with N5-(phosphonoacetyl)-L-ornithine  
Authors : Polo, L.M.; Gil-Ortiz, F.; Rubio, V.  
Deposited on : 2011-11-21  
Resolution : 2.00 Å(reported)

This is a full wwPDB validation report for a publicly released PDB entry.  
We welcome your comments at [validation@mail.wwpdb.org](mailto:validation@mail.wwpdb.org)  
A user guide is available at <http://wwpdb.org/ValidationPDFNotes.html>

---

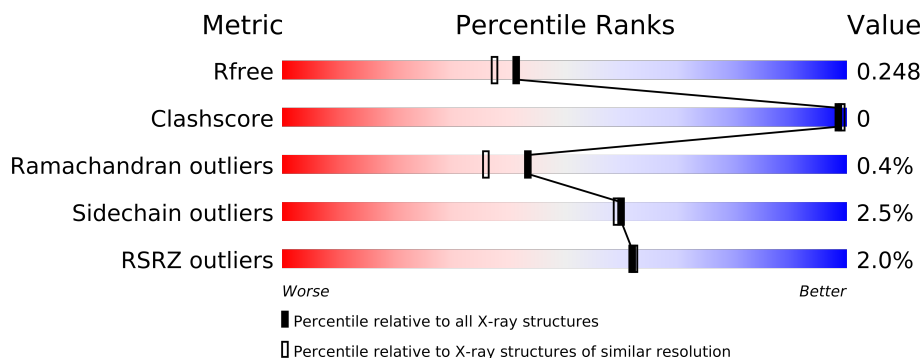
The following versions of software and data (see [references](#)) were used in the production of this report:

MolProbity : 4.02b-467  
Mogul : 1.15 2013  
Xtriage (Phenix) : dev-1323  
EDS : stable22639  
Percentile statistics : 21963  
Refmac : 5.8.0049  
CCP4 : 6.3.0 (Settle)  
Ideal geometry (proteins) : Engh & Huber (2001)  
Ideal geometry (DNA, RNA) : Parkinson et. al. (1996)  
Validation Pipeline (wwPDB-VP) : stable22683

# 1 Overall quality at a glance

The reported resolution of this entry is 2.00 Å.

Percentile scores (ranging between 0-100) for global validation metrics of the entry are shown in the following graphic. The table shows the number of entries on which the scores are based.



Metric	Whole archive (#Entries)	Similar resolution (#Entries, resolution range(Å))
$R_{free}$	66092	4888 (2.00-2.00)
Clashscore	79885	6188 (2.00-2.00)
Ramachandran outliers	78287	6102 (2.00-2.00)
Sidechain outliers	78261	6100 (2.00-2.00)
RSRZ outliers	66119	4890 (2.00-2.00)

The table below summarises the geometric issues observed across the polymeric chains and their fit to the electron density. The red, orange, yellow and green segments on the lower bar indicate the fraction of residues that contain outliers for  $\geq 3$ , 2, 1 and 0 types of geometric quality criteria. The upper red bar (where present) indicates the fraction of residues that have poor fit to the electron density.

Mol	Chain	Length	Quality of chain
1	A	355	
1	B	355	
1	C	355	
1	D	355	
1	E	355	
1	F	355	

## 2 Entry composition

There are 5 unique types of molecules in this entry. The entry contains 16128 atoms, of which 0 are hydrogen and 0 are deuterium.

In the tables below, the ZeroOcc column contains the number of atoms modelled with zero occupancy, the AltConf column contains the number of residues with at least one atom in alternate conformation and the Trace column contains the number of residues modelled with at most 2 atoms.

- Molecule 1 is a protein called PUTRESCINE CARBAMOYLTRANSFERASE.

Mol	Chain	Residues	Atoms					ZeroOcc	AltConf	Trace
1	A	339	Total	C	N	O	S	0	0	0
			2628	1656	440	510	22			
1	B	338	Total	C	N	O	S	0	0	0
			2627	1653	441	511	22			
1	C	339	Total	C	N	O	S	0	0	0
			2640	1661	441	517	21			
1	D	334	Total	C	N	O	S	0	0	0
			2553	1605	430	497	21			
1	E	333	Total	C	N	O	S	0	0	0
			2551	1608	428	494	21			
1	F	323	Total	C	N	O	S	0	0	0
			2480	1560	415	483	22			

There are 96 discrepancies between the modelled and reference sequences:

Chain	Residue	Modelled	Actual	Comment	Reference
A	340	SER	-	EXPRESSION TAG	UNP Q837U7
A	341	ALA	-	EXPRESSION TAG	UNP Q837U7
A	342	ALA	-	EXPRESSION TAG	UNP Q837U7
A	343	LYS	-	EXPRESSION TAG	UNP Q837U7
A	344	LEU	-	EXPRESSION TAG	UNP Q837U7
A	345	ALA	-	EXPRESSION TAG	UNP Q837U7
A	346	ALA	-	EXPRESSION TAG	UNP Q837U7
A	347	ALA	-	EXPRESSION TAG	UNP Q837U7
A	348	LEU	-	EXPRESSION TAG	UNP Q837U7
A	349	GLU	-	EXPRESSION TAG	UNP Q837U7
A	350	HIS	-	EXPRESSION TAG	UNP Q837U7
A	351	HIS	-	EXPRESSION TAG	UNP Q837U7
A	352	HIS	-	EXPRESSION TAG	UNP Q837U7
A	353	HIS	-	EXPRESSION TAG	UNP Q837U7
A	354	HIS	-	EXPRESSION TAG	UNP Q837U7
A	355	HIS	-	EXPRESSION TAG	UNP Q837U7
B	340	SER	-	EXPRESSION TAG	UNP Q837U7

*Continued on next page...*

*Continued from previous page...*

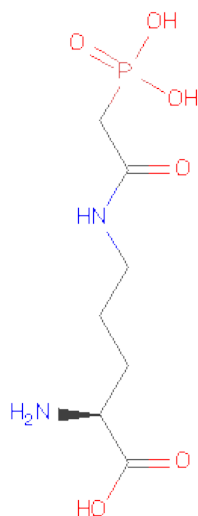
Chain	Residue	Modelled	Actual	Comment	Reference
B	341	ALA	-	EXPRESSION TAG	UNP Q837U7
B	342	ALA	-	EXPRESSION TAG	UNP Q837U7
B	343	LYS	-	EXPRESSION TAG	UNP Q837U7
B	344	LEU	-	EXPRESSION TAG	UNP Q837U7
B	345	ALA	-	EXPRESSION TAG	UNP Q837U7
B	346	ALA	-	EXPRESSION TAG	UNP Q837U7
B	347	ALA	-	EXPRESSION TAG	UNP Q837U7
B	348	LEU	-	EXPRESSION TAG	UNP Q837U7
B	349	GLU	-	EXPRESSION TAG	UNP Q837U7
B	350	HIS	-	EXPRESSION TAG	UNP Q837U7
B	351	HIS	-	EXPRESSION TAG	UNP Q837U7
B	352	HIS	-	EXPRESSION TAG	UNP Q837U7
B	353	HIS	-	EXPRESSION TAG	UNP Q837U7
B	354	HIS	-	EXPRESSION TAG	UNP Q837U7
B	355	HIS	-	EXPRESSION TAG	UNP Q837U7
C	340	SER	-	EXPRESSION TAG	UNP Q837U7
C	341	ALA	-	EXPRESSION TAG	UNP Q837U7
C	342	ALA	-	EXPRESSION TAG	UNP Q837U7
C	343	LYS	-	EXPRESSION TAG	UNP Q837U7
C	344	LEU	-	EXPRESSION TAG	UNP Q837U7
C	345	ALA	-	EXPRESSION TAG	UNP Q837U7
C	346	ALA	-	EXPRESSION TAG	UNP Q837U7
C	347	ALA	-	EXPRESSION TAG	UNP Q837U7
C	348	LEU	-	EXPRESSION TAG	UNP Q837U7
C	349	GLU	-	EXPRESSION TAG	UNP Q837U7
C	350	HIS	-	EXPRESSION TAG	UNP Q837U7
C	351	HIS	-	EXPRESSION TAG	UNP Q837U7
C	352	HIS	-	EXPRESSION TAG	UNP Q837U7
C	353	HIS	-	EXPRESSION TAG	UNP Q837U7
C	354	HIS	-	EXPRESSION TAG	UNP Q837U7
C	355	HIS	-	EXPRESSION TAG	UNP Q837U7
D	340	SER	-	EXPRESSION TAG	UNP Q837U7
D	341	ALA	-	EXPRESSION TAG	UNP Q837U7
D	342	ALA	-	EXPRESSION TAG	UNP Q837U7
D	343	LYS	-	EXPRESSION TAG	UNP Q837U7
D	344	LEU	-	EXPRESSION TAG	UNP Q837U7
D	345	ALA	-	EXPRESSION TAG	UNP Q837U7
D	346	ALA	-	EXPRESSION TAG	UNP Q837U7
D	347	ALA	-	EXPRESSION TAG	UNP Q837U7
D	348	LEU	-	EXPRESSION TAG	UNP Q837U7
D	349	GLU	-	EXPRESSION TAG	UNP Q837U7
D	350	HIS	-	EXPRESSION TAG	UNP Q837U7

*Continued on next page...*

*Continued from previous page...*

Chain	Residue	Modelled	Actual	Comment	Reference
D	351	HIS	-	EXPRESSION TAG	UNP Q837U7
D	352	HIS	-	EXPRESSION TAG	UNP Q837U7
D	353	HIS	-	EXPRESSION TAG	UNP Q837U7
D	354	HIS	-	EXPRESSION TAG	UNP Q837U7
D	355	HIS	-	EXPRESSION TAG	UNP Q837U7
E	340	SER	-	EXPRESSION TAG	UNP Q837U7
E	341	ALA	-	EXPRESSION TAG	UNP Q837U7
E	342	ALA	-	EXPRESSION TAG	UNP Q837U7
E	343	LYS	-	EXPRESSION TAG	UNP Q837U7
E	344	LEU	-	EXPRESSION TAG	UNP Q837U7
E	345	ALA	-	EXPRESSION TAG	UNP Q837U7
E	346	ALA	-	EXPRESSION TAG	UNP Q837U7
E	347	ALA	-	EXPRESSION TAG	UNP Q837U7
E	348	LEU	-	EXPRESSION TAG	UNP Q837U7
E	349	GLU	-	EXPRESSION TAG	UNP Q837U7
E	350	HIS	-	EXPRESSION TAG	UNP Q837U7
E	351	HIS	-	EXPRESSION TAG	UNP Q837U7
E	352	HIS	-	EXPRESSION TAG	UNP Q837U7
E	353	HIS	-	EXPRESSION TAG	UNP Q837U7
E	354	HIS	-	EXPRESSION TAG	UNP Q837U7
E	355	HIS	-	EXPRESSION TAG	UNP Q837U7
F	340	SER	-	EXPRESSION TAG	UNP Q837U7
F	341	ALA	-	EXPRESSION TAG	UNP Q837U7
F	342	ALA	-	EXPRESSION TAG	UNP Q837U7
F	343	LYS	-	EXPRESSION TAG	UNP Q837U7
F	344	LEU	-	EXPRESSION TAG	UNP Q837U7
F	345	ALA	-	EXPRESSION TAG	UNP Q837U7
F	346	ALA	-	EXPRESSION TAG	UNP Q837U7
F	347	ALA	-	EXPRESSION TAG	UNP Q837U7
F	348	LEU	-	EXPRESSION TAG	UNP Q837U7
F	349	GLU	-	EXPRESSION TAG	UNP Q837U7
F	350	HIS	-	EXPRESSION TAG	UNP Q837U7
F	351	HIS	-	EXPRESSION TAG	UNP Q837U7
F	352	HIS	-	EXPRESSION TAG	UNP Q837U7
F	353	HIS	-	EXPRESSION TAG	UNP Q837U7
F	354	HIS	-	EXPRESSION TAG	UNP Q837U7
F	355	HIS	-	EXPRESSION TAG	UNP Q837U7

- Molecule 2 is N-(PHOSPHONOACETYL)-L-ORNITHINE (three-letter code: PAO) (formula: C<sub>7</sub>H<sub>15</sub>N<sub>2</sub>O<sub>6</sub>P).

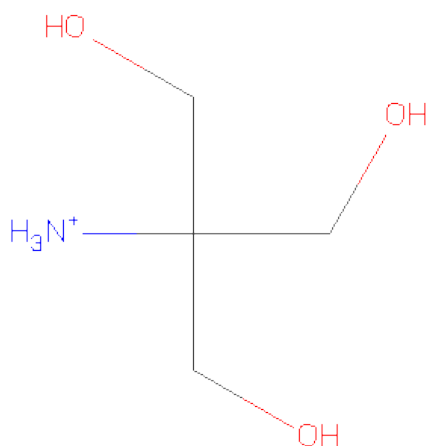


Mol	Chain	Residues	Atoms					ZeroOcc	AltConf
2	A	1	Total	C	N	O	P	0	0
			16	7	2	6	1		
2	B	1	Total	C	N	O	P	0	0
			16	7	2	6	1		
2	C	1	Total	C	N	O	P	0	0
			16	7	2	6	1		
2	D	1	Total	C	N	O	P	0	0
			16	7	2	6	1		
2	E	1	Total	C	N	O	P	0	0
			16	7	2	6	1		
2	F	1	Total	C	N	O	P	0	0
			16	7	2	6	1		

- Molecule 3 is NICKEL (II) ION (three-letter code: NI) (formula: Ni).

Mol	Chain	Residues	Atoms		ZeroOcc	AltConf
3	A	1	Total	Ni	0	0
			1	1		
3	D	1	Total	Ni	0	0
			1	1		

- Molecule 4 is 2-AMINO-2-HYDROXYMETHYL-PROPANE-1,3-DIOL (three-letter code: TRS) (formula: C<sub>4</sub>H<sub>12</sub>NO<sub>3</sub>).



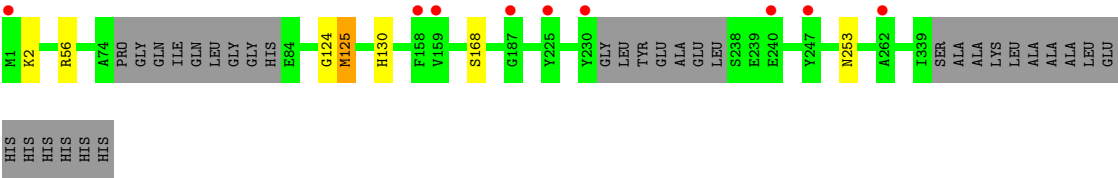
Mol	Chain	Residues	Atoms				ZeroOcc	AltConf
4	B	1	Total	C	N	O	0	0
			8	4	1	3		
4	C	1	Total	C	N	O	0	0
			8	4	1	3		

- Molecule 5 is water.

Mol	Chain	Residues	Atoms		ZeroOcc	AltConf
5	A	130	Total	O	0	0
			130	130		
5	B	113	Total	O	0	0
			113	113		
5	C	91	Total	O	0	0
			91	91		
5	D	102	Total	O	0	0
			102	102		
5	E	50	Total	O	0	0
			50	50		
5	F	49	Total	O	0	0
			49	49		







## 4 Data and refinement statistics

Property	Value	Source
Space group	P 1	Depositor
Cell constants a, b, c, $\alpha$ , $\beta$ , $\gamma$	81.52Å 81.71Å 82.28Å 105.43° 102.80° 100.75°	Depositor
Resolution (Å)	25.00 – 2.00 24.82 – 2.00	Depositor EDS
% Data completeness (in resolution range)	87.6 (25.00-2.00) 83.9 (24.82-2.00)	Depositor EDS
$R_{merge}$	0.12	Depositor
$R_{sym}$	(Not available)	Depositor
$\langle I/\sigma(I) \rangle$ <sup>1</sup>	1.54 (at 1.99Å)	Xtriage
Refinement program	REFMAC 5.5.0102	Depositor
R, $R_{free}$	0.196 , 0.237 0.207 , 0.248	Depositor DCC
$R_{free}$ test set	5541 reflections (5.35%)	DCC
Wilson B-factor (Å <sup>2</sup> )	29.5	Xtriage
Anisotropy	0.049	Xtriage
Bulk solvent $k_{sol}$ (e/Å <sup>3</sup> ), $B_{sol}$ (Å <sup>2</sup> )	0.34 , 21.6	EDS
Estimated twinning fraction	0.019 for -h,-l,-k	Xtriage
L-test for twinning	$\langle  L  \rangle = 0.48$ , $\langle L^2 \rangle = 0.31$	Xtriage
Outliers	0 of 109164 reflections	Xtriage
$F_o, F_c$ correlation	0.95	EDS
Total number of atoms	16128	wwPDB-VP
Average B, all atoms (Å <sup>2</sup> )	33.0	wwPDB-VP

Xtriage's analysis on translational NCS is as follows: *The largest off-origin peak in the Patterson function is 4.82% of the height of the origin peak. No significant pseudotranslation is detected.*

<sup>1</sup>Intensities estimated from amplitudes.

## 5 Model quality

### 5.1 Standard geometry

Bond lengths and bond angles in the following residue types are not validated in this section: NI, TRS, PAO

The Z score for a bond length (or angle) is the number of standard deviations the observed value is removed from the expected value. A bond length (or angle) with  $|Z| > 5$  is considered an outlier worth inspection. RMSZ is the root-mean-square of all Z scores of the bond lengths (or angles).

Mol	Chain	Bond lengths		Bond angles	
		RMSZ	$\# Z  > 5$	RMSZ	$\# Z  > 5$
1	A	0.41	0/2676	0.53	1/3619 (0.0%)
1	B	0.41	0/2673	0.52	0/3611
1	C	0.41	0/2688	0.51	0/3635
1	D	0.39	0/2598	0.50	0/3517
1	E	0.38	0/2597	0.49	0/3518
1	F	0.38	0/2523	0.48	0/3416
All	All	0.40	0/15755	0.51	1/21316 (0.0%)

There are no bond length outliers.

All (1) bond angle outliers are listed below:

Mol	Chain	Res	Type	Atoms	Z	Observed(°)	Ideal(°)
1	A	151	LEU	CA-CB-CG	5.01	126.82	115.30

There are no chirality outliers.

There are no planarity outliers.

### 5.2 Close contacts

In the following table, the Non-H and H(model) columns list the number of non-hydrogen atoms and hydrogen atoms in the chain respectively. The H(added) column lists the number of hydrogens added by MolProbity. The Clashes column lists the number of clashes within the asymmetric unit, and the number in parentheses is this value normalized per 1000 atoms of the molecule in the chain. The Symm-Clashes column gives symmetry related clashes, in the same way as for the Clashes column.

Mol	Chain	Non-H	H(model)	H(added)	Clashes	Symm-Clashes
1	A	2628	0	0	2	0
1	B	2627	0	0	2	0

*Continued on next page...*

*Continued from previous page...*

Mol	Chain	Non-H	H(model)	H(added)	Clashes	Symm-Clashes
1	C	2640	0	0	3	0
1	D	2553	0	0	0	0
1	E	2551	0	0	0	0
1	F	2480	0	0	1	0
2	A	16	0	12	0	0
2	B	16	0	12	0	0
2	C	16	0	12	0	0
2	D	16	0	12	0	0
2	E	16	0	12	0	0
2	F	16	0	12	0	0
3	A	1	0	0	0	0
3	D	1	0	0	0	0
4	B	8	0	12	0	0
4	C	8	0	12	0	0
5	A	130	0	0	0	0
5	B	113	0	0	1	0
5	C	91	0	0	1	0
5	D	102	0	0	0	0
5	E	50	0	0	0	0
5	F	49	0	0	0	0
All	All	16128	0	96	7	0

Clashscore is defined as the number of clashes calculated for the entry per 1000 atoms (including hydrogens) of the entry. The overall clashscore for this entry is 0.

All (7) close contacts within the same asymmetric unit are listed below.

Atom-1	Atom-2	Distance(Å)	Clash(Å)
1:A:79:GLN:NE2	1:C:53:THR:OG1	2.36	0.59
1:A:56:ARG:NE	1:A:60:GLU:OE2	2.41	0.52
1:B:56:ARG:NE	1:B:60:GLU:OE2	2.51	0.43
1:B:175:LYS:NZ	5:B:2009:HOH:O	2.51	0.43
1:C:11:TYR:O	1:C:175:LYS:NZ	2.52	0.42
1:C:175:LYS:NZ	5:C:2008:HOH:O	2.52	0.42
1:F:124:GLY:O	1:F:125:MET:CB	2.69	0.40

There are no symmetry-related clashes.

## 5.3 Torsion angles

### 5.3.1 Protein backbone ⓘ

In the following table, the Percentiles column shows the percent Ramachandran outliers of the chain as a percentile score with respect to all X-ray entries followed by that with respect to entries of similar resolution. The Analysed column shows the number of residues for which the backbone conformation was analysed, and the total number of residues.

Mol	Chain	Analysed	Favoured	Allowed	Outliers	Percentiles	
1	A	337/355 (95%)	329 (98%)	7 (2%)	1 (0%)	50	44
1	B	334/355 (94%)	325 (97%)	8 (2%)	1 (0%)	50	44
1	C	337/355 (95%)	329 (98%)	6 (2%)	2 (1%)	33	24
1	D	328/355 (92%)	323 (98%)	4 (1%)	1 (0%)	50	44
1	E	329/355 (93%)	321 (98%)	7 (2%)	1 (0%)	50	44
1	F	317/355 (89%)	311 (98%)	5 (2%)	1 (0%)	50	44
All	All	1982/2130 (93%)	1938 (98%)	37 (2%)	7 (0%)	43	36

All (7) Ramachandran outliers are listed below:

Mol	Chain	Res	Type
1	A	125	MET
1	B	125	MET
1	C	125	MET
1	D	125	MET
1	E	125	MET
1	F	125	MET
1	C	82	GLY

### 5.3.2 Protein sidechains ⓘ

In the following table, the Percentiles column shows the percent sidechain outliers of the chain as a percentile score with respect to all X-ray entries followed by that with respect to entries of similar resolution. The Analysed column shows the number of residues for which the sidechain conformation was analysed, and the total number of residues.

Mol	Chain	Analysed	Rotameric	Outliers	Percentiles	
1	A	282/307 (92%)	272 (96%)	10 (4%)	48	43
1	B	284/307 (92%)	277 (98%)	7 (2%)	60	59
1	C	285/307 (93%)	278 (98%)	7 (2%)	60	59

*Continued on next page...*

*Continued from previous page...*

Mol	Chain	Analysed	Rotameric	Outliers	Percentiles	
1	D	268/307 (87%)	261 (97%)	7 (3%)	59	58
1	E	268/307 (87%)	262 (98%)	6 (2%)	64	65
1	F	263/307 (86%)	258 (98%)	5 (2%)	69	71
All	All	1650/1842 (90%)	1608 (98%)	42 (2%)	60	59

All (42) residues with a non-rotameric sidechain are listed below:

Mol	Chain	Res	Type
1	A	2	LYS
1	A	13	LYS
1	A	54	ARG
1	A	56	ARG
1	A	79	GLN
1	A	115	ASN
1	A	130	HIS
1	A	164	GLN
1	A	168	SER
1	A	253	ASN
1	B	2	LYS
1	B	56	ARG
1	B	113	LEU
1	B	130	HIS
1	B	175	LYS
1	B	201	ASN
1	B	253	ASN
1	C	2	LYS
1	C	56	ARG
1	C	79	GLN
1	C	164	GLN
1	C	186	GLU
1	C	253	ASN
1	C	337	GLN
1	D	56	ARG
1	D	130	HIS
1	D	164	GLN
1	D	168	SER
1	D	175	LYS
1	D	253	ASN
1	D	338	SER
1	E	56	ARG
1	E	130	HIS

*Continued on next page...*

*Continued from previous page...*

Mol	Chain	Res	Type
1	E	164	GLN
1	E	168	SER
1	E	234	GLU
1	E	253	ASN
1	F	2	LYS
1	F	56	ARG
1	F	130	HIS
1	F	168	SER
1	F	253	ASN

Some sidechains can be flipped to improve hydrogen bonding and reduce clashes. There are no such sidechains identified.

### 5.3.3 RNA ⓘ

There are no RNA chains in this entry.

## 5.4 Non-standard residues in protein, DNA, RNA chains ⓘ

There are no non-standard protein/DNA/RNA residues in this entry.

## 5.5 Carbohydrates ⓘ

There are no carbohydrates in this entry.

## 5.6 Ligand geometry ⓘ

Of 10 ligands modelled in this entry, 2 are monoatomic - leaving 8 for Mogul analysis.

In the following table, the Counts columns list the number of bonds (or angles) for which Mogul statistics could be retrieved, the number of bonds (or angles) that are observed in the model and the number of bonds (or angles) that are defined in the chemical component dictionary. The Link column lists molecule types, if any, to which the group is linked. The Z score for a bond length (or angle) is the number of standard deviations the observed value is removed from the expected value. A bond length (or angle) with  $|Z| > 2$  is considered an outlier worth inspection. RMSZ is the root-mean-square of all Z scores of the bond lengths (or angles).

Mol	Type	Chain	Res	Link	Bond lengths			Bond angles		
					Counts	RMSZ	$\# Z  > 2$	Counts	RMSZ	$\# Z  > 2$
2	PAO	A	1340	-	15,15,15	1.72	3 (20%)	20,20,20	1.26	3 (15%)

Mol	Type	Chain	Res	Link	Bond lengths			Bond angles		
					Counts	RMSZ	# Z  > 2	Counts	RMSZ	# Z  > 2
2	PAO	B	1340	-	15,15,15	1.90	3 (20%)	20,20,20	1.34	2 (10%)
4	TRS	B	1341	-	7,7,7	1.01	1 (14%)	9,9,9	0.78	0
2	PAO	C	1340	-	15,15,15	1.84	3 (20%)	20,20,20	1.33	4 (20%)
4	TRS	C	1341	-	7,7,7	1.07	1 (14%)	9,9,9	0.75	0
2	PAO	D	1340	-	15,15,15	1.86	3 (20%)	20,20,20	1.24	3 (15%)
2	PAO	E	1338	-	15,15,15	1.66	3 (20%)	20,20,20	1.24	2 (10%)
2	PAO	F	1340	-	15,15,15	1.94	3 (20%)	20,20,20	1.37	2 (10%)

In the following table, the Chirals column lists the number of chiral outliers, the number of chiral centers analysed, the number of these observed in the model and the number defined in the chemical component dictionary. Similar counts are reported in the Torsion and Rings columns. '-' means no outliers of that kind were identified.

Mol	Type	Chain	Res	Link	Chirals	Torsions	Rings
2	PAO	A	1340	-	-	0/16/16/16	0/0/0/0
2	PAO	B	1340	-	-	0/16/16/16	0/0/0/0
4	TRS	B	1341	-	-	0/9/9/9	0/0/0/0
2	PAO	C	1340	-	-	0/16/16/16	0/0/0/0
4	TRS	C	1341	-	-	0/9/9/9	0/0/0/0
2	PAO	D	1340	-	-	0/16/16/16	0/0/0/0
2	PAO	E	1338	-	-	0/16/16/16	0/0/0/0
2	PAO	F	1340	-	-	0/16/16/16	0/0/0/0

All (20) bond length outliers are listed below:

Mol	Chain	Res	Type	Atoms	Z	Observed(Å)	Ideal(Å)
2	B	1340	PAO	P-O1P	5.40	1.62	1.50
2	C	1340	PAO	P-O1P	5.21	1.62	1.50
2	F	1340	PAO	P-O1P	5.15	1.62	1.50
2	A	1340	PAO	P-O1P	4.92	1.61	1.50
2	D	1340	PAO	P-O1P	4.51	1.60	1.50
2	D	1340	PAO	P-O2P	4.18	1.63	1.54
2	E	1338	PAO	P-O1P	4.15	1.59	1.50
2	F	1340	PAO	P-O2P	4.04	1.62	1.54
2	C	1340	PAO	P-O2P	3.37	1.61	1.54
2	E	1338	PAO	P-O2P	3.30	1.61	1.54
2	B	1340	PAO	P-O2P	3.19	1.61	1.54
2	B	1340	PAO	P-O3P	-3.13	1.48	1.54
2	D	1340	PAO	P-O3P	-3.07	1.48	1.54
2	F	1340	PAO	P-O3P	-2.97	1.48	1.54
2	E	1338	PAO	P-O3P	-2.90	1.49	1.54

*Continued on next page...*



*Continued from previous page...*

Mol	Chain	Res	Type	Atoms	Z	Observed(Å)	Ideal(Å)
2	A	1340	PAO	P-O2P	2.86	1.60	1.54
2	C	1340	PAO	P-O3P	-2.72	1.49	1.54
2	A	1340	PAO	P-O3P	-2.71	1.49	1.54
4	C	1341	TRS	C-N	-2.56	1.47	1.50
4	B	1341	TRS	C-N	-2.33	1.47	1.50

All (16) bond angle outliers are listed below:

Mol	Chain	Res	Type	Atoms	Z	Observed(°)	Ideal(°)
2	F	1340	PAO	O3P-P-C1P	4.26	115.60	106.85
2	A	1340	PAO	O3P-P-C1P	3.72	114.48	106.85
2	E	1338	PAO	O3P-P-C1P	3.65	114.35	106.85
2	B	1340	PAO	P-C1P-C1	-3.26	108.14	113.58
2	B	1340	PAO	O3P-P-C1P	3.06	113.14	106.85
2	C	1340	PAO	O3P-P-C1P	3.05	113.11	106.85
2	D	1340	PAO	O3P-P-C1P	2.94	112.88	106.85
2	C	1340	PAO	P-C1P-C1	-2.90	108.74	113.58
2	D	1340	PAO	O2P-P-O1P	-2.52	105.83	112.56
2	D	1340	PAO	P-C1P-C1	-2.36	109.65	113.58
2	A	1340	PAO	P-C1P-C1	-2.31	109.72	113.58
2	C	1340	PAO	O1P-P-C1P	-2.25	105.72	110.22
2	A	1340	PAO	O2P-P-O1P	-2.24	106.57	112.56
2	F	1340	PAO	O1P-P-C1P	-2.11	106.00	110.22
2	E	1338	PAO	O1P-P-C1P	-2.04	106.13	110.22
2	C	1340	PAO	O2P-P-O1P	-2.01	107.21	112.56

There are no chirality outliers.

There are no torsion outliers.

There are no ring outliers.

## 5.7 Other polymers ⓘ

There are no such residues in this entry.

## 5.8 Polymer linkage issues

There are no chain breaks in this entry.

## 6 Fit of model and data ⓘ

### 6.1 Protein, DNA and RNA chains ⓘ

In the following table, the column labelled ‘#RSRZ> 2’ contains the number (and percentage) of RSRZ outliers, followed by percent RSRZ outliers for the chain as percentile scores relative to all X-ray entries and entries of similar resolution. The OWAB column contains the minimum, median, 95<sup>th</sup> percentile and maximum values of the occupancy-weighted average B-factor per residue. The column labelled ‘Q< 0.9’ lists the number of (and percentage) of residues with an average occupancy less than 0.9.

Mol	Chain	Analysed	<RSRZ>	#RSRZ>2	OWAB(Å <sup>2</sup> )	Q<0.9
1	A	339/355 (95%)	-0.33	3 (0%) 81 82	17, 28, 45, 63	5 (1%)
1	B	338/355 (95%)	-0.30	0 100 100	18, 27, 48, 62	4 (1%)
1	C	339/355 (95%)	-0.23	3 (0%) 81 82	17, 29, 49, 93	2 (0%)
1	D	334/355 (94%)	-0.05	13 (3%) 37 37	19, 33, 57, 68	2 (0%)
1	E	333/355 (93%)	0.03	13 (3%) 37 37	19, 38, 61, 72	1 (0%)
1	F	323/355 (90%)	-0.01	9 (2%) 50 50	19, 37, 58, 77	1 (0%)
All	All	2006/2130 (94%)	-0.15	41 (2%) 62 62	17, 31, 57, 93	15 (0%)

All (41) RSRZ outliers are listed below:

Mol	Chain	Res	Type	RSRZ
1	A	81	GLY	3.3
1	E	156	VAL	3.0
1	D	339	ILE	2.9
1	F	262	ALA	2.8
1	D	157	VAL	2.7
1	E	83	HIS	2.7
1	D	338	SER	2.7
1	D	158	PHE	2.7
1	E	76	GLY	2.6
1	F	225	TYR	2.6
1	D	226	THR	2.5
1	E	235	ALA	2.5
1	F	1	MET	2.5
1	A	75	PRO	2.5
1	D	82	GLY	2.5
1	D	235	ALA	2.5
1	F	230	TYR	2.5
1	E	158	PHE	2.5
1	D	76	GLY	2.5

*Continued on next page...*

*Continued from previous page...*

Mol	Chain	Res	Type	RSRZ
1	E	187	GLY	2.4
1	E	75	PRO	2.4
1	E	238	SER	2.4
1	C	338	SER	2.4
1	F	240	GLU	2.3
1	F	187	GLY	2.3
1	E	204	VAL	2.3
1	D	225	TYR	2.3
1	E	262	ALA	2.3
1	D	159	VAL	2.2
1	E	159	VAL	2.2
1	C	158	PHE	2.2
1	F	159	VAL	2.2
1	E	148	GLY	2.2
1	A	204	VAL	2.1
1	F	247	TYR	2.1
1	D	232	LEU	2.1
1	E	196	ALA	2.1
1	C	81	GLY	2.1
1	D	83	HIS	2.1
1	F	158	PHE	2.1
1	D	70	GLY	2.0

## 6.2 Non-standard residues in protein, DNA, RNA chains ⓘ

There are no non-standard protein/DNA/RNA residues in this entry.

## 6.3 Carbohydrates ⓘ

There are no carbohydrates in this entry.

## 6.4 Ligands ⓘ

In the following table, the Atoms column lists the number of modelled atoms in the group and the number defined in the chemical component dictionary. LLDF column lists the quality of electron density of the group with respect to its neighbouring residues in protein, DNA or RNA chains. The B-factors column lists the minimum, median, 95<sup>th</sup> percentile and maximum values of B factors of atoms in the group. The column labelled 'Q < 0.9' lists the number of atoms with occupancy less than 0.9.

Mol	Type	Chain	Res	Atoms	RSR	LLDF	B-factors( $\text{\AA}^2$ )	Q<0.9
2	PAO	A	1340	16/16	0.12	0.55	23,26,32,32	0
4	TRS	B	1341	8/8	0.11	0.26	37,37,37,38	0
4	TRS	C	1341	8/8	0.13	0.23	39,40,40,40	0
2	PAO	B	1340	16/16	0.12	-0.06	23,26,27,27	0
2	PAO	F	1340	16/16	0.10	-0.52	30,35,36,36	0
2	PAO	D	1340	16/16	0.10	-0.53	28,30,35,35	0
2	PAO	C	1340	16/16	0.10	-0.66	22,27,29,29	0
2	PAO	E	1338	16/16	0.09	-0.70	30,33,35,35	0
3	NI	A	1341	1/1	0.04	-1.70	34,34,34,34	0
3	NI	D	1341	1/1	0.05	-2.20	35,35,35,35	0

## 6.5 Other polymers ⓘ

There are no such residues in this entry.