



Full wwPDB X-ray Structure Validation Report

Feb 27, 2014 – 03:27 PM GMT

PDB ID : 2A9W
Title : E. coli TS complexed with dUMP and inhibitor GA9
Authors : Finer-Moore, J.S.; Anderson, A.C.; O'Neil, R.H.; Costi, M.P.; Ferrari, S.;
Krucinski, J.; Stroud, R.M.
Deposited on : 2005-07-12
Resolution : 1.65 Å(reported)

This is a full wwPDB validation report for a publicly released PDB entry.
We welcome your comments at validation@mail.wwpdb.org
A user guide is available at <http://wwpdb.org/ValidationPDFNotes.html>

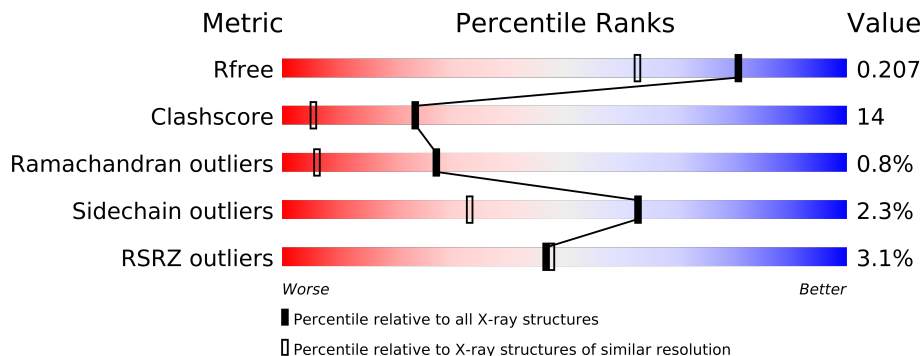
The following versions of software and data (see [references](#)) were used in the production of this report:

MolProbity : 4.02b-467
Mogul : 1.15 2013
Xtriage (Phenix) : dev-1323
EDS : stable22639
Percentile statistics : 21963
Refmac : 5.8.0049
CCP4 : 6.3.0 (Settle)
Ideal geometry (proteins) : Engh & Huber (2001)
Ideal geometry (DNA, RNA) : Parkinson et. al. (1996)
Validation Pipeline (wwPDB-VP) : stable22683

1 Overall quality at a glance

The reported resolution of this entry is 1.65 Å.

Percentile scores (ranging between 0-100) for global validation metrics of the entry are shown in the following graphic. The table shows the number of entries on which the scores are based.



Metric	Whole archive (#Entries)	Similar resolution (#Entries, resolution range(Å))
R_{free}	66092	1404 (1.68-1.64)
Clashscore	79885	1001 (1.66-1.66)
Ramachandran outliers	78287	1581 (1.68-1.64)
Sidechain outliers	78261	1580 (1.68-1.64)
RSRZ outliers	66119	1404 (1.68-1.64)

The table below summarises the geometric issues observed across the polymeric chains and their fit to the electron density. The red, orange, yellow and green segments on the lower bar indicate the fraction of residues that contain outliers for ≥ 3 , 2, 1 and 0 types of geometric quality criteria. The upper red bar (where present) indicates the fraction of residues that have poor fit to the electron density.

Mol	Chain	Length	Quality of chain
1	A	264	
1	B	264	
1	C	264	
1	D	264	

The following table lists non-polymeric compounds that are outliers for geometric or electron-density-fit criteria:

Mol	Type	Chain	Res	Geometry	Electron density
2	PO4	A	1270	-	X
2	PO4	B	1273	-	X
2	PO4	C	1274	-	X
2	PO4	D	1272	-	X

Continued on next page...

Continued from previous page...

Mol	Type	Chain	Res	Geometry	Electron density
2	PO4	D	1276	-	X
3	UMP	C	1279[B]	-	X
3	UMP	D	1280[B]	-	X
4	GA9	A	1320[A]	-	X
4	GA9	A	1320[B]	-	X
4	GA9	B	1321[A]	-	X
4	GA9	B	1321[B]	-	X
4	GA9	C	1318[A]	-	X
4	GA9	C	1318[B]	-	X
4	GA9	D	1319[A]	-	X
4	GA9	D	1319[B]	-	X
5	BME	D	1818[A]	-	X
6	2BR	B	1819[A]	-	X
6	2BR	B	1819[B]	-	X
7	GOL	A	1803	-	X
7	GOL	A	1804[A]	-	X
7	GOL	B	1801	-	X
7	GOL	B	1802[A]	-	X
7	GOL	C	1806	-	X
7	GOL	C	1808[A]	-	X
7	GOL	D	1805	-	X
7	GOL	D	1807[A]	-	X

2 Entry composition

There are 8 unique types of molecules in this entry. The entry contains 9836 atoms, of which 0 are hydrogen and 0 are deuterium.

In the tables below, the ZeroOcc column contains the number of atoms modelled with zero occupancy, the AltConf column contains the number of residues with at least one atom in alternate conformation and the Trace column contains the number of residues modelled with at most 2 atoms.

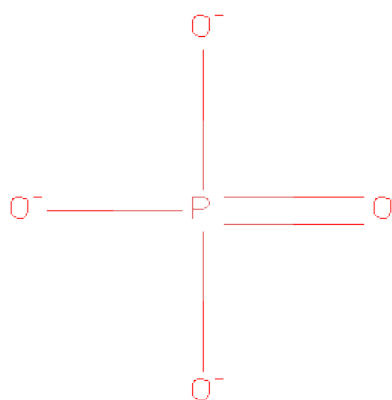
- Molecule 1 is a protein called Thymidylate synthase.

Mol	Chain	Residues	Atoms					ZeroOcc	AltConf	Trace
1	A	264	Total	C	N	O	S	0	9	0
			2234	1427	387	405	15			
1	B	264	Total	C	N	O	S	0	8	0
			2216	1413	383	405	15			
1	C	264	Total	C	N	O	S	0	6	0
			2202	1405	381	402	14			
1	D	264	Total	C	N	O	S	0	8	0
			2217	1414	384	405	14			

There are 4 discrepancies between the modelled and reference sequences:

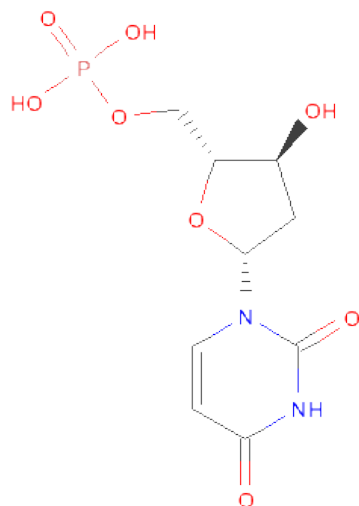
Chain	Residue	Modelled	Actual	Comment	Reference
A	1	CXM	MET	MODIFIED RESIDUE	UNP P0A884
B	1	CXM	MET	MODIFIED RESIDUE	UNP P0A884
C	1	CXM	MET	MODIFIED RESIDUE	UNP P0A884
D	1	CXM	MET	MODIFIED RESIDUE	UNP P0A884

- Molecule 2 is PHOSPHATE ION (three-letter code: PO4) (formula: O₄P).



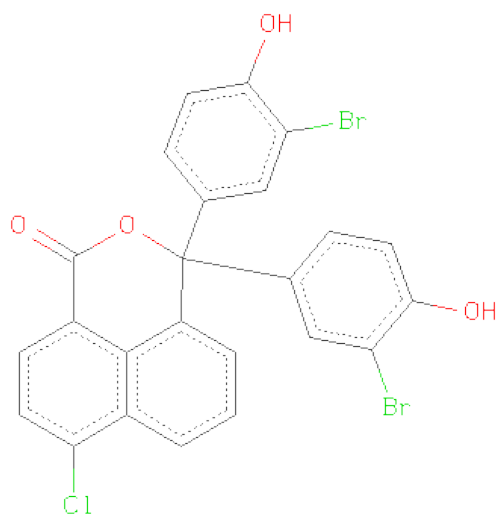
Mol	Chain	Residues	Atoms			ZeroOcc	AltConf
2	A	1	Total	O	P	0	1
			5	4	1		
2	A	1	Total	O	P	0	0
			5	4	1		
2	B	1	Total	O	P	0	1
			5	4	1		
2	B	1	Total	O	P	0	0
			5	4	1		
2	B	1	Total	O	P	0	0
			5	4	1		
2	B	1	Total	O	P	0	0
			5	4	1		
2	C	1	Total	O	P	0	1
			5	4	1		
2	C	1	Total	O	P	0	0
			5	4	1		
2	C	1	Total	O	P	0	0
			5	4	1		
2	D	1	Total	O	P	0	1
			5	4	1		
2	D	1	Total	O	P	0	0
			5	4	1		
2	D	1	Total	O	P	0	0
			5	4	1		

- Molecule 3 is 2'-DEOXYURIDINE 5'-MONOPHOSPHATE (three-letter code: UMP) (formula: $C_9H_{13}N_2O_8P$).



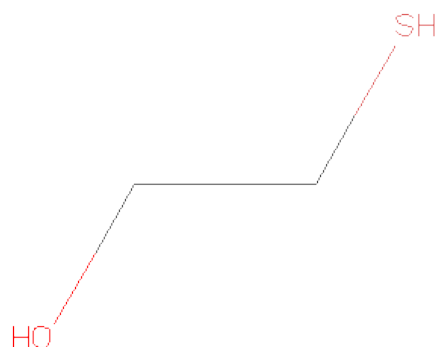
Mol	Chain	Residues	Atoms					ZeroOcc	AltConf
3	A	1	Total	C	N	O	P	0	1
			20	9	2	8	1		
3	B	1	Total	C	N	O	P	0	1
			20	9	2	8	1		
3	C	1	Total	C	N	O	P	0	1
			20	9	2	8	1		
3	D	1	Total	C	N	O	P	0	1
			20	9	2	8	1		

- Molecule 4 is 3,3-BIS(3-BROMO-4-HYDROXYPHENYL)-7-CHLORO-1H,3H-BENZO[DE]ISOCHROMEN-1-ONE (three-letter code: GA9) (formula: $C_{24}H_{13}Br_2ClO_4$).



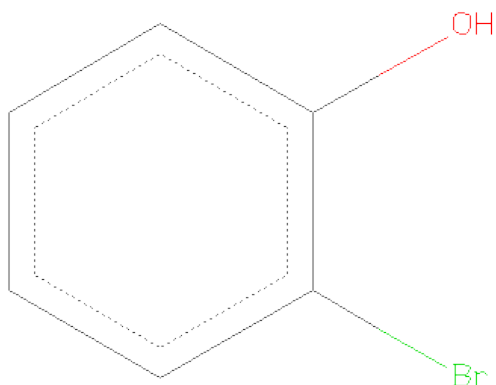
Mol	Chain	Residues	Atoms					ZeroOcc	AltConf
4	A	1	Total	Br	C	Cl	O	0	1
			62	4	48	2	8		
4	B	1	Total	Br	C	Cl	O	0	1
			62	4	48	2	8		
4	C	1	Total	Br	C	Cl	O	0	1
			62	4	48	2	8		
4	D	1	Total	Br	C	Cl	O	0	1
			62	4	48	2	8		

- Molecule 5 is BETA-MERCAPTOETHANOL (three-letter code: BME) (formula: C₂H₆OS).



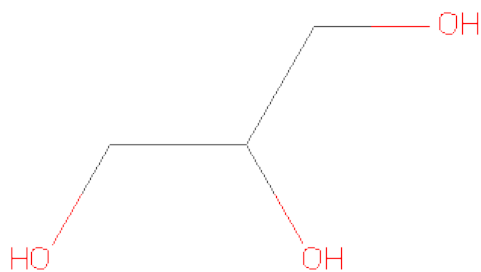
Mol	Chain	Residues	Atoms				ZeroOcc	AltConf
5	A	1	Total	C	O	S	0	1
			4	2	1	1		
5	A	1	Total	C	O	S	0	1
			4	2	1	1		
5	C	1	Total	C	O	S	0	1
			4	2	1	1		
5	D	1	Total	C	O	S	0	1
			4	2	1	1		

- Molecule 6 is 2-BROMOPHENOL (three-letter code: 2BR) (formula: C₆H₅BrO).



Mol	Chain	Residues	Atoms				ZeroOcc	AltConf
			Total	Br	C	O		
6	B	1	16	2	12	2	0	1

- Molecule 7 is GLYCEROL (three-letter code: GOL) (formula: $C_3H_8O_3$).



Mol	Chain	Residues	Atoms			ZeroOcc	AltConf
			Total	C	O		
7	A	1	6	3	3	0	0
7	A	1	6	3	3	0	1
7	A	1	6	3	3	0	0

Continued on next page...

Continued from previous page...

Mol	Chain	Residues	Atoms	ZeroOcc	AltConf
7	B	1	Total C O 6 3 3	0	0
7	B	1	Total C O 6 3 3	0	1
7	B	1	Total C O 6 3 3	0	0
7	C	1	Total C O 6 3 3	0	0
7	C	1	Total C O 6 3 3	0	1
7	D	1	Total C O 6 3 3	0	0
7	D	1	Total C O 6 3 3	0	1

- Molecule 8 is water.

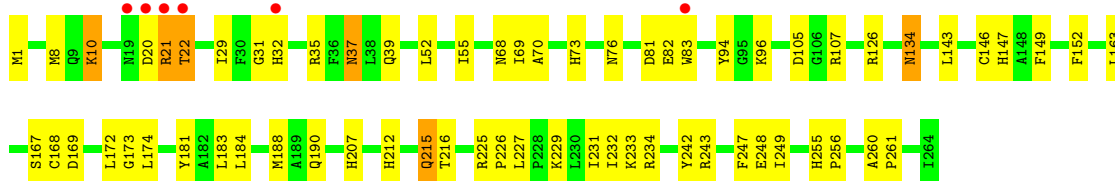
Mol	Chain	Residues	Atoms	ZeroOcc	AltConf
8	A	128	Total O 128 128	0	3
8	B	115	Total O 115 115	0	1
8	C	126	Total O 126 126	0	3
8	D	118	Total O 118 118	0	2

3 Residue-property plots

These plots are drawn for all protein, RNA and DNA chains in the entry. The first graphic for a chain summarises the proportions of errors displayed in the second graphic. The second graphic shows the sequence view annotated by issues in geometry and electron density. Residues are color-coded according to the number of geometric quality criteria for which they contain at least one outlier: green = 0, yellow = 1, orange = 2 and red = 3 or more. A red dot above a residue indicates a poor fit to the electron density ($RSRZ > 2$). Stretches of 2 or more consecutive residues without any outlier are shown as a green connector. Residues present in the sample, but not in the model, are shown in grey.

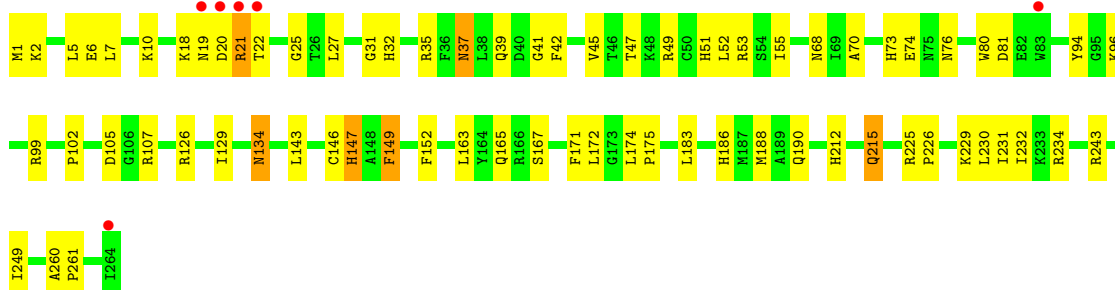
• Molecule 1: Thymidylate synthase

Chain A: 



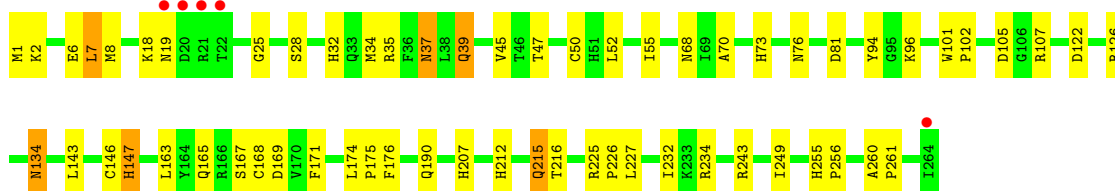
• Molecule 1: Thymidylate synthase

Chain B: 



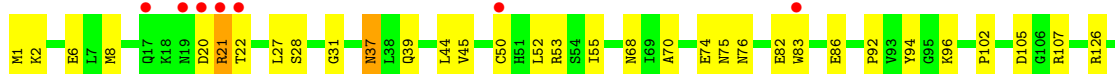
• Molecule 1: Thymidylate synthase

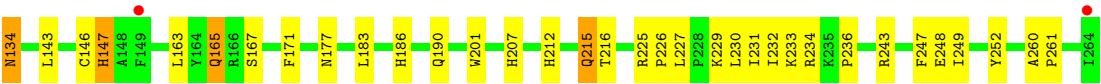
Chain C: 



• Molecule 1: Thymidylate synthase

Chain D: 





4 Data and refinement statistics

Property	Value	Source
Space group	H 3	Depositor
Cell constants a, b, c, α , β , γ	186.60Å 186.60Å 114.20Å 90.00° 90.00° 120.00°	Depositor
Resolution (Å)	29.50 – 1.65 29.50 – 1.65	Depositor EDS
% Data completeness (in resolution range)	89.2 (29.50-1.65) 89.3 (29.50-1.65)	Depositor EDS
R_{merge}	0.06	Depositor
R_{sym}	(Not available)	Depositor
$\langle I/\sigma(I) \rangle$ ¹	1.74 (at 1.65Å)	Xtriage
Refinement program	CNS 1.1	Depositor
R, R_{free}	0.207 , 0.226 0.194 , 0.207	Depositor DCC
R_{free} test set	15874 reflections (11.05%)	DCC
Wilson B-factor (Å ²)	20.0	Xtriage
Anisotropy	0.018	Xtriage
Bulk solvent k_{sol} (e/Å ³), B_{sol} (Å ²)	0.41 , 36.1	EDS
Estimated twinning fraction	0.018 for -2/3*h-1/3*k-4/3*l,-1/3*h-2/3*k+4/3*l,-1/3*h+1/3*k+1/3*l 0.017 for -h,1/3*h-1/3*k-4/3*l,-1/3*h-2/3*k+1/3*l 0.017 for -1/3*h+1/3*k+4/3*l,-k,2/3*h+1/3*k+1/3*l 0.477 for -h,2/3*h+1/3*k+4/3*l,1/3*h+2/3*k-1/3*l 0.469 for -1/3*h-2/3*k+4/3*l,-2/3*h-1/3*k-4/3*l,1/3*h-1/3*k-1/3*l 0.470 for 1/3*h+2/3*k-4/3*l,-k,-2/3*h-1/3*k-1/3*l 0.019 for h,-h-k,-l	Xtriage
L-test for twinning	$\langle L \rangle = 0.51$, $\langle L^2 \rangle = 0.34$	Xtriage
Outliers	0 of 167150 reflections	Xtriage
F_o, F_c correlation	0.96	EDS
Total number of atoms	9836	wwPDB-VP
Average B, all atoms (Å ²)	27.0	wwPDB-VP

Xtriage's analysis on translational NCS is as follows: *The largest off-origin peak in the Patterson function is 3.66% of the height of the origin peak. No significant pseudotranslation is detected.*

¹Intensities estimated from amplitudes.

5 Model quality

5.1 Standard geometry

Bond lengths and bond angles in the following residue types are not validated in this section: GOL, UMP, GA9, BME, PO4, 2BR, CXM

The Z score for a bond length (or angle) is the number of standard deviations the observed value is removed from the expected value. A bond length (or angle) with $|Z| > 5$ is considered an outlier worth inspection. RMSZ is the root-mean-square of all Z scores of the bond lengths (or angles).

Mol	Chain	Bond lengths		Bond angles	
		RMSZ	$\# Z > 5$	RMSZ	$\# Z > 5$
1	A	0.31	0/2287	0.62	0/3105
1	B	0.31	0/2266	0.64	2/3075 (0.1%)
1	C	0.31	0/2252	0.62	1/3057 (0.0%)
1	D	0.31	0/2267	0.63	2/3076 (0.1%)
All	All	0.31	0/9072	0.63	5/12313 (0.0%)

There are no bond length outliers.

All (5) bond angle outliers are listed below:

Mol	Chain	Res	Type	Atoms	Z	Observed(°)	Ideal(°)
1	D	147	HIS	N-CA-C	-5.26	96.79	111.00
1	C	147	HIS	N-CA-C	-5.14	97.12	111.00
1	D	27	LEU	N-CA-C	-5.08	97.28	111.00
1	B	27	LEU	N-CA-C	-5.05	97.38	111.00
1	B	147	HIS	N-CA-C	-5.00	97.49	111.00

There are no chirality outliers.

There are no planarity outliers.

5.2 Close contacts

In the following table, the Non-H and H(model) columns list the number of non-hydrogen atoms and hydrogen atoms in the chain respectively. The H(added) column lists the number of hydrogens added by MolProbity. The Clashes column lists the number of clashes within the asymmetric unit, and the number in parentheses is this value normalized per 1000 atoms of the molecule in the chain. The Symm-Clashes column gives symmetry related clashes, in the same way as for the Clashes column.

Mol	Chain	Non-H	H(model)	H(added)	Clashes	Symm-Clashes
1	A	2234	0	2142	65	0
1	B	2216	0	2133	68	0
1	C	2202	0	2120	64	0
1	D	2217	0	2135	65	0
2	A	10	0	0	0	0
2	B	20	0	0	0	0
2	C	15	0	0	0	0
2	D	15	0	0	0	0
3	A	20	0	11	2	0
3	B	20	0	11	1	0
3	C	20	0	11	1	0
3	D	20	0	11	1	0
4	A	62	0	26	2	0
4	B	62	0	26	2	0
4	C	62	0	26	2	0
4	D	62	0	26	3	0
5	A	8	0	10	7	0
5	C	4	0	5	5	0
5	D	4	0	5	0	0
6	B	16	0	10	8	0
7	A	18	0	24	0	0
7	B	18	0	24	3	0
7	C	12	0	16	8	0
7	D	12	0	15	6	0
8	A	128	0	0	4	0
8	B	115	0	0	4	0
8	C	126	0	0	2	0
8	D	118	0	0	8	0
All	All	9836	0	8787	261	0

Clashscore is defined as the number of clashes calculated for the entry per 1000 atoms (including hydrogens) of the entry. The overall clashscore for this entry is 14.

All (261) close contacts within the same asymmetric unit are listed below.

Atom-1	Atom-2	Distance(Å)	Clash(Å)
1:D:50[A]:CYS:SG	7:D:1807[A]:GOL:O3	1.92	1.27
1:C:55:ILE:HD11	7:C:1808[A]:GOL:H31	1.51	0.92
1:A:169:ASP:H	5:A:1815[A]:BME:H12	1.36	0.88
1:C:215:GLN:HE21	1:C:215:GLN:H	1.21	0.86
1:B:215:GLN:HE21	1:B:215:GLN:H	1.26	0.83
1:B:147:HIS:HB3	1:B:165:GLN:HE22	1.42	0.82
1:B:80:TRP:HZ3	1:B:143:LEU:HD21	1.45	0.81
1:B:49:ARG:HD2	6:B:1819[B]:2BR:BR1	2.37	0.80

Continued on next page...

Continued from previous page...

Atom-1	Atom-2	Distance(Å)	Clash(Å)
1:D:215:GLN:HE21	1:D:215:GLN:H	1.25	0.79
1:A:73:HIS:HE1	1:A:81:ASP:OD1	1.66	0.78
1:D:44:LEU:HG	1:D:50[B]:CYS:SG	2.24	0.78
1:A:169:ASP:N	5:A:1815[A]:BME:H12	2.00	0.77
1:A:215:GLN:H	1:A:215:GLN:HE21	1.27	0.77
1:D:147:HIS:HB3	1:D:165:GLN:HE22	1.50	0.76
1:D:50[A]:CYS:HB3	7:D:1807[A]:GOL:O2	1.87	0.74
1:C:215:GLN:NE2	1:C:215:GLN:H	1.86	0.74
1:A:29:ILE:HD12	1:A:32[A]:HIS:CD2	2.23	0.73
1:A:168:CYS:HA	5:A:1815[A]:BME:H12	1.69	0.72
1:B:249:ILE:H	7:B:1809:GOL:C1	2.01	0.72
1:C:168:CYS:HA	5:C:1816[A]:BME:H11	1.71	0.71
1:C:50[A]:CYS:HG	7:C:1808[A]:GOL:HO2	1.39	0.70
1:B:215:GLN:NE2	1:B:215:GLN:H	1.89	0.70
1:D:102:PRO:HG2	8:D:1895:HOH:O	1.92	0.70
1:D:215:GLN:NE2	1:D:215:GLN:H	1.89	0.70
1:A:52:LEU:HD12	1:A:249:ILE:HG13	1.74	0.69
1:C:52:LEU:HD12	1:C:249:ILE:HG13	1.73	0.68
1:C:50[A]:CYS:SG	7:C:1808[A]:GOL:O2	2.50	0.68
1:D:52:LEU:HD12	1:D:249:ILE:HG13	1.76	0.68
1:D:105:ASP:OD2	1:D:107:ARG:HD3	1.94	0.68
1:B:249:ILE:H	7:B:1809:GOL:H11	1.59	0.67
1:D:50[A]:CYS:HB3	7:D:1807[A]:GOL:C2	2.24	0.67
1:B:52:LEU:HD12	1:B:249:ILE:HG13	1.76	0.67
1:B:68:ASN:HD22	1:B:70:ALA:H	1.41	0.67
1:B:18:LYS:HG2	8:B:1898:HOH:O	1.94	0.67
1:C:18:LYS:CD	8:D:1936:HOH:O	2.41	0.67
1:A:215:GLN:H	1:A:215:GLN:NE2	1.92	0.67
1:B:70:ALA:O	1:B:74:GLU:HG3	1.96	0.66
1:C:50[A]:CYS:HB3	7:C:1808[A]:GOL:C3	2.26	0.66
1:D:86:GLU:CD	1:D:86:GLU:H	1.98	0.66
1:B:80:TRP:CZ3	1:B:143:LEU:HD21	2.28	0.65
1:B:21:ARG:HG3	1:B:21:ARG:O	1.96	0.65
1:B:102:PRO:HG2	8:B:1932:HOH:O	1.97	0.65
1:A:10:LYS:NZ	1:A:10:LYS:HB2	2.12	0.65
1:D:50[A]:CYS:HB3	7:D:1807[A]:GOL:H2	1.78	0.65
4:A:1320[B]:GA9:H18	4:A:1320[B]:GA9:C9	2.27	0.64
1:A:168:CYS:HA	5:A:1815[A]:BME:C1	2.27	0.63
1:A:52:LEU:CD1	1:A:249:ILE:HG13	2.28	0.63
1:A:225:ARG:HB3	1:A:226:PRO:HD2	1.81	0.63
1:A:22:THR:HA	8:A:1905:HOH:O	1.98	0.63
1:C:168:CYS:HA	5:C:1816[A]:BME:C1	2.29	0.62

Continued on next page...

Continued from previous page...

Atom-1	Atom-2	Distance(Å)	Clash(Å)
1:D:146[B]:CYS:SG	1:D:167:SER:O	2.58	0.62
4:C:1318[A]:GA9:H14	4:C:1318[A]:GA9:C9	2.27	0.62
1:A:234:ARG:NE	1:A:243:ARG:HH21	1.98	0.62
1:A:212:HIS:HE1	1:A:261:PRO:O	1.83	0.62
4:A:1320[A]:GA9:C9	4:A:1320[A]:GA9:H14	2.29	0.61
1:A:143:LEU:HD12	1:A:143:LEU:O	2.00	0.61
4:D:1319[A]:GA9:H14	4:D:1319[A]:GA9:C9	2.31	0.61
1:C:68:ASN:HD22	1:C:70:ALA:H	1.48	0.61
1:B:229:LYS:HE2	1:B:231:ILE:HD11	1.82	0.61
4:B:1321[A]:GA9:C9	4:B:1321[A]:GA9:H14	2.29	0.61
4:C:1318[B]:GA9:C9	4:C:1318[B]:GA9:H18	2.30	0.61
1:D:212:HIS:HE1	1:D:261:PRO:O	1.83	0.61
4:B:1321[B]:GA9:H18	4:B:1321[B]:GA9:C9	2.30	0.61
1:C:212:HIS:HE1	1:C:261:PRO:O	1.83	0.60
1:A:174:LEU:N	5:A:1815[A]:BME:H22	2.16	0.60
4:D:1319[B]:GA9:C9	4:D:1319[B]:GA9:H18	2.32	0.60
1:A:1:CXM:HG3	1:A:227:LEU:HD21	1.83	0.60
1:B:225:ARG:HB3	1:B:226:PRO:HD2	1.83	0.60
1:A:152:PHE:CZ	1:A:188[B]:MET:SD	2.94	0.60
1:D:52:LEU:CD1	1:D:249:ILE:HG13	2.31	0.59
1:C:225:ARG:HB3	1:C:226:PRO:HD2	1.84	0.59
1:B:212:HIS:HE1	1:B:261:PRO:O	1.85	0.59
1:D:225:ARG:HB3	1:D:226:PRO:HD2	1.84	0.59
1:B:143:LEU:HD23	1:B:143:LEU:N	2.17	0.59
1:A:37:ASN:ND2	1:A:39:GLN:H	2.01	0.59
1:D:68:ASN:HD22	1:D:70:ALA:H	1.50	0.58
1:D:50[B]:CYS:SG	1:D:252:TYR:OH	2.60	0.58
1:A:146[B]:CYS:SG	1:A:167:SER:O	2.61	0.58
1:C:146[B]:CYS:SG	1:C:167:SER:O	2.61	0.58
1:C:143:LEU:O	1:C:143:LEU:HD12	2.04	0.58
1:D:53[B]:ARG:NH2	1:D:75:ASN:O	2.35	0.58
1:B:147:HIS:HB3	1:B:165:GLN:NE2	2.16	0.57
1:C:1:CXM:HG3	1:C:227:LEU:HD21	1.87	0.57
1:D:1:CXM:HG3	1:D:227:LEU:HD21	1.85	0.57
1:C:1:CXM:ON2	1:C:45[A]:VAL:HG23	2.04	0.57
1:C:52:LEU:CD1	1:C:249:ILE:HG13	2.35	0.57
1:C:50[A]:CYS:HB3	7:C:1808[A]:GOL:H32	1.87	0.57
1:A:21:ARG:O	1:A:22:THR:C	2.42	0.57
1:C:169:ASP:H	5:C:1816[A]:BME:H12	1.68	0.57
1:B:249:ILE:N	7:B:1809:GOL:H11	2.19	0.56
1:D:92:PRO:CB	1:D:96[A]:LYS:HD3	2.35	0.56
1:A:68:ASN:HD22	1:A:70:ALA:H	1.53	0.56

Continued on next page...

Continued from previous page...

Atom-1	Atom-2	Distance(Å)	Clash(Å)
1:A:107:ARG:NH1	8:A:1944:HOH:O	2.27	0.56
1:B:152:PHE:CZ	1:B:188[B]:MET:SD	2.99	0.56
1:C:50[A]:CYS:HB3	7:C:1808[A]:GOL:O3	2.05	0.56
1:D:143:LEU:O	1:D:143:LEU:HD12	2.05	0.56
1:D:147:HIS:HB3	1:D:165:GLN:NE2	2.18	0.55
1:C:45[A]:VAL:CG1	1:C:50[A]:CYS:SG	2.95	0.55
1:B:96:LYS:HE2	1:B:102:PRO:HD3	1.88	0.55
1:D:21:ARG:N	1:D:21:ARG:HE	2.04	0.55
1:C:190:GLN:HE22	1:C:232:ILE:HG21	1.72	0.55
1:B:146[B]:CYS:SG	1:B:167:SER:O	2.64	0.55
1:C:176:PHE:HD2	7:C:1808[A]:GOL:H12	1.71	0.55
1:C:96:LYS:HE3	1:C:96:LYS:HA	1.88	0.55
1:A:126:ARG:NH2	1:B:20:ASP:HB3	2.23	0.54
1:C:126:ARG:NH2	1:D:20:ASP:HB3	2.22	0.54
1:D:92:PRO:HB3	1:D:96[B]:LYS:HD2	1.88	0.54
1:B:52:LEU:H	6:B:1819[B]:2BR:C18	2.21	0.54
1:A:31:GLY:O	1:B:35:ARG:NH2	2.41	0.54
1:D:92:PRO:CB	1:D:96[B]:LYS:HD2	2.38	0.54
1:D:2:LYS:HG2	1:D:6:GLU:OE2	2.08	0.54
1:C:19:ASN:HA	1:C:25:GLY:HA2	1.90	0.53
1:D:107:ARG:NH1	8:D:1931:HOH:O	2.42	0.53
1:D:37:ASN:ND2	1:D:39:GLN:H	2.05	0.53
4:D:1319[A]:GA9:BR1	7:D:1807[A]:GOL:O1	2.76	0.53
1:C:37:ASN:ND2	1:C:39:GLN:H	2.07	0.53
1:A:147:HIS:HB2	1:A:163:LEU:HD11	1.91	0.52
1:B:73:HIS:HE1	1:B:81:ASP:OD1	1.92	0.52
1:C:52:LEU:HD23	1:C:55:ILE:HD12	1.90	0.52
1:A:69:ILE:HD12	1:A:73:HIS:CE1	2.45	0.52
1:A:37:ASN:HD22	1:A:39:GLN:H	1.56	0.52
1:A:183:LEU:HD11	1:A:247:PHE:CE1	2.45	0.52
1:C:215:GLN:HE21	1:C:215:GLN:N	2.01	0.52
1:C:73:HIS:HE1	1:C:81:ASP:OD1	1.92	0.52
1:B:52:LEU:CD1	1:B:249:ILE:HG13	2.40	0.51
1:A:52:LEU:HD23	1:A:55:ILE:HD12	1.92	0.51
1:B:229:LYS:HE2	1:B:231:ILE:CD1	2.40	0.51
1:A:134:ASN:HD22	1:A:134:ASN:C	2.13	0.51
1:C:105:ASP:OD2	1:C:107:ARG:HD3	2.10	0.51
1:D:190:GLN:HE22	1:D:232:ILE:HG21	1.75	0.51
1:B:53[A]:ARG:N	6:B:1819[A]:2BR:BR1	2.91	0.51
1:B:7:LEU:HD13	1:B:32:HIS:CD2	2.46	0.51
1:A:20:ASP:HB2	1:B:126:ARG:NH2	2.25	0.51
1:C:18:LYS:HD3	8:D:1936:HOH:O	2.07	0.51

Continued on next page...

Continued from previous page...

Atom-1	Atom-2	Distance(Å)	Clash(Å)
1:A:168:CYS:CA	5:A:1815[A]:BME:H12	2.39	0.51
1:B:52:LEU:HD23	1:B:55:ILE:HD12	1.91	0.51
1:C:32:HIS:HE1	1:C:34:MET:HG2	1.75	0.51
1:B:1:CXM:ON2	1:B:45[A]:VAL:HG13	2.11	0.51
1:D:134:ASN:HD22	1:D:134:ASN:C	2.15	0.51
1:D:212:HIS:HD2	8:D:1901:HOH:O	1.94	0.50
1:D:243:ARG:HD2	8:D:1917:HOH:O	2.10	0.50
1:A:233:LYS:HE3	1:A:248:GLU:HB2	1.92	0.50
1:A:37:ASN:C	1:A:37:ASN:HD22	2.14	0.50
1:A:184:LEU:O	1:A:188[B]:MET:HG3	2.11	0.50
1:C:2:LYS:O	1:C:6:GLU:HG3	2.12	0.49
1:D:37:ASN:HD22	1:D:39:GLN:H	1.60	0.49
1:A:20:ASP:CB	1:B:126:ARG:NH2	2.76	0.49
1:B:134:ASN:C	1:B:134:ASN:HD22	2.16	0.49
1:C:147:HIS:HB2	1:C:163:LEU:HD11	1.95	0.49
1:B:5:LEU:HD11	1:B:47:THR:HG21	1.94	0.49
1:A:212:HIS:HD2	8:A:1834:HOH:O	1.94	0.49
1:B:19:ASN:HA	1:B:25:GLY:HA2	1.95	0.49
1:C:37:ASN:C	1:C:37:ASN:HD22	2.16	0.49
1:C:134:ASN:HD22	1:C:134:ASN:C	2.16	0.49
1:B:41:GLY:HA2	8:B:1923:HOH:O	2.13	0.49
1:C:176:PHE:CD2	7:C:1808[A]:GOL:H12	2.48	0.49
1:B:52:LEU:H	6:B:1819[A]:2BR:C14	2.26	0.48
3:C:1279[B]:UMP:OP3	1:D:126:ARG:HD2	2.13	0.48
1:D:92:PRO:HB3	1:D:96[A]:LYS:HD3	1.94	0.48
1:C:18:LYS:HD2	8:D:1936:HOH:O	2.10	0.48
1:B:105:ASP:OD2	1:B:107:ARG:HD3	2.13	0.48
1:A:229:LYS:HE3	1:A:231:ILE:HD11	1.96	0.48
1:B:190:GLN:HE22	1:B:232:ILE:HG21	1.79	0.48
1:B:172:LEU:HD21	1:B:260:ALA:HB3	1.95	0.48
1:B:21:ARG:O	1:B:22:THR:C	2.51	0.48
1:B:2:LYS:HG2	1:B:6:GLU:OE2	2.14	0.48
1:A:105:ASP:OD2	1:A:107:ARG:HD3	2.14	0.47
1:D:21:ARG:CA	1:D:21:ARG:NE	2.77	0.47
1:C:37:ASN:HD21	1:C:39:GLN:HB2	1.79	0.47
1:A:96:LYS:HA	1:A:96:LYS:HE3	1.97	0.47
1:A:173:GLY:C	5:A:1815[A]:BME:H22	2.35	0.47
1:D:70:ALA:O	1:D:74:GLU:HG3	2.14	0.47
1:D:37:ASN:HD21	1:D:39:GLN:HB2	1.79	0.47
1:D:233:LYS:HE3	1:D:248:GLU:HB2	1.96	0.47
1:C:18:LYS:NZ	8:D:1936:HOH:O	2.47	0.47
1:A:20:ASP:O	1:A:22:THR:N	2.48	0.47

Continued on next page...

Continued from previous page...

Atom-1	Atom-2	Distance(Å)	Clash(Å)
1:D:20:ASP:O	1:D:22:THR:N	2.48	0.47
1:D:82:GLU:HG3	1:D:83:TRP:CD1	2.50	0.47
1:D:52:LEU:HD23	1:D:55:ILE:HD12	1.97	0.46
1:C:45[A]:VAL:HG13	1:C:50[A]:CYS:SG	2.55	0.46
1:A:255:HIS:HB3	1:A:256:PRO:HD2	1.98	0.46
1:B:37:ASN:HD22	1:B:37:ASN:C	2.19	0.46
1:A:190:GLN:HE22	1:A:232:ILE:HG21	1.80	0.46
1:D:147:HIS:HB2	1:D:163:LEU:HD11	1.98	0.46
1:D:229:LYS:HE3	1:D:231:ILE:HD11	1.97	0.46
1:D:177[A]:ASN:ND2	1:D:201:TRP:HE1	2.13	0.46
1:D:183:LEU:HD11	1:D:247:PHE:CD1	2.51	0.46
1:C:126:ARG:HD2	3:D:1280[B]:UMP:OP3	2.16	0.46
1:A:10:LYS:HB2	1:A:10:LYS:HZ3	1.81	0.46
1:B:51:HIS:HB3	6:B:1819[A]:2BR:BR1	2.71	0.46
1:B:53[A]:ARG:HB2	6:B:1819[A]:2BR:BR1	2.71	0.45
1:C:35:ARG:NH2	1:D:31:GLY:O	2.49	0.45
1:D:50[A]:CYS:CB	7:D:1807[A]:GOL:H2	2.45	0.45
1:A:68:ASN:ND2	1:A:70:ALA:H	2.13	0.45
1:D:37:ASN:C	1:D:37:ASN:HD22	2.18	0.45
1:A:229:LYS:HE3	1:A:231:ILE:CD1	2.46	0.45
1:C:234:ARG:NE	1:C:243:ARG:HH21	2.14	0.45
1:B:147:HIS:HB2	1:B:163:LEU:HD11	1.98	0.45
1:B:37:ASN:ND2	1:B:39:GLN:H	2.15	0.45
1:D:229:LYS:HE3	1:D:231:ILE:CD1	2.47	0.45
1:D:21:ARG:HA	1:D:21:ARG:NE	2.31	0.45
1:A:31:GLY:O	1:A:32[A]:HIS:CG	2.70	0.45
1:B:52:LEU:HB2	6:B:1819[A]:2BR:H14	1.99	0.44
1:D:183:LEU:HD11	1:D:247:PHE:CE1	2.52	0.44
1:B:10:LYS:HE2	8:B:1894:HOH:O	2.17	0.44
1:C:122:ASP:CG	1:D:21:ARG:HH12	2.20	0.44
1:A:147:HIS:HD2	1:A:181:TYR:OH	2.01	0.44
1:C:212:HIS:HD2	8:C:1827:HOH:O	2.01	0.44
1:D:8:MET:CG	1:D:216:THR:HG23	2.47	0.44
1:A:207:HIS:HE1	8:A:1942[A]:HOH:O	2.00	0.43
1:B:174:LEU:HB3	1:B:175:PRO:HD3	2.01	0.43
1:B:186:HIS:CG	1:B:230:LEU:HD23	2.53	0.43
1:A:183:LEU:HD11	1:A:247:PHE:CD1	2.53	0.43
1:B:129:ILE:HG21	1:B:149[A]:PHE:CE2	2.53	0.43
1:B:215:GLN:N	1:B:215:GLN:HE21	2.05	0.43
1:A:31:GLY:O	1:A:32[A]:HIS:CD2	2.72	0.43
1:C:165:GLN:HE21	5:C:1816[A]:BME:H11	1.84	0.43
1:C:7:LEU:HG	1:C:32:HIS:CE1	2.54	0.43

Continued on next page...

Continued from previous page...

Atom-1	Atom-2	Distance(Å)	Clash(Å)
1:C:207:HIS:HE1	8:C:1941[A]:HOH:O	2.02	0.43
1:B:234:ARG:NE	1:B:243:ARG:HH21	2.17	0.43
1:A:8:MET:CG	1:A:216:THR:HG23	2.48	0.43
1:A:172:LEU:HD21	1:A:260:ALA:HB3	2.00	0.43
1:C:174:LEU:HB3	1:C:175:PRO:HD3	2.01	0.43
1:C:28:SER:HB3	1:C:207:HIS:HB3	2.01	0.43
1:D:28[B]:SER:HB2	1:D:207:HIS:HB3	2.01	0.43
1:C:73:HIS:CE1	1:C:81:ASP:OD1	2.72	0.42
1:B:143:LEU:CD2	1:B:143:LEU:N	2.82	0.42
1:B:52:LEU:N	6:B:1819[A]:2BR:BR1	3.06	0.42
1:A:126:ARG:HD2	3:B:1278[B]:UMP:OP3	2.20	0.42
3:A:1277[B]:UMP:OP3	1:B:126:ARG:HD2	2.19	0.42
1:C:165:GLN:NE2	5:C:1816[A]:BME:S2	2.93	0.42
1:A:35:ARG:NH2	1:B:31:GLY:O	2.53	0.42
1:A:126:ARG:NH2	1:B:20:ASP:CB	2.83	0.42
1:B:20:ASP:O	1:B:21:ARG:C	2.58	0.42
1:C:255:HIS:HB3	1:C:256:PRO:HD2	2.02	0.42
1:D:44:LEU:CG	1:D:50[B]:CYS:SG	3.02	0.42
1:D:143:LEU:HD12	1:D:143:LEU:C	2.41	0.42
1:D:234:ARG:O	1:D:236:PRO:HD3	2.19	0.42
1:A:149[B]:PHE:CD1	1:A:149[B]:PHE:C	2.94	0.42
1:D:186:HIS:CG	1:D:230:LEU:HD23	2.55	0.41
1:C:171:PHE:CZ	1:C:215:GLN:HB3	2.55	0.41
1:B:96:LYS:HD3	1:B:96:LYS:O	2.20	0.41
1:A:207:HIS:HE1	3:A:1277[B]:UMP:O3'	2.03	0.41
1:B:171:PHE:CZ	1:B:215:GLN:HB3	2.56	0.41
1:D:1:CXM:ON2	1:D:45[A]:VAL:HG13	2.20	0.41
1:C:47:THR:HA	1:C:255:HIS:HD2	1.84	0.41
1:C:8:MET:CG	1:C:216:THR:HG23	2.50	0.41
1:D:171:PHE:CE1	1:D:260:ALA:HB2	2.55	0.41
1:B:20:ASP:O	1:B:22:THR:N	2.53	0.41
1:A:10:LYS:HB2	1:A:10:LYS:HZ2	1.83	0.41
1:C:37:ASN:HD22	1:C:39:GLN:H	1.66	0.41
1:B:99:ARG:HG3	1:B:99:ARG:HH11	1.86	0.41
1:A:82:GLU:HG3	1:A:83[A]:TRP:CD1	2.55	0.41
1:C:171:PHE:CE1	1:C:260:ALA:HB2	2.55	0.41
1:A:190:GLN:NE2	1:A:242:TYR:OH	2.54	0.40
1:D:215:GLN:N	1:D:215:GLN:HE21	2.05	0.40
1:A:215:GLN:HE21	1:A:215:GLN:N	2.08	0.40
1:C:101:TRP:HA	1:C:102:PRO:HD3	1.90	0.40
1:C:215:GLN:NE2	1:C:215:GLN:N	2.64	0.40
1:C:126:ARG:HD3	1:D:167:SER:OG	2.22	0.40

Continued on next page...

Continued from previous page...

Atom-1	Atom-2	Distance(Å)	Clash(Å)
1:B:42:PHE:HZ	1:B:183:LEU:HG	1.86	0.40

There are no symmetry-related clashes.

5.3 Torsion angles

5.3.1 Protein backbone ⓘ

In the following table, the Percentiles column shows the percent Ramachandran outliers of the chain as a percentile score with respect to all X-ray entries followed by that with respect to entries of similar resolution. The Analysed column shows the number of residues for which the backbone conformation was analysed, and the total number of residues.

Mol	Chain	Analysed	Favoured	Allowed	Outliers	Percentiles	
1	A	271/264 (103%)	260 (96%)	8 (3%)	3 (1%)	21	3
1	B	270/264 (102%)	260 (96%)	8 (3%)	2 (1%)	30	8
1	C	268/264 (102%)	259 (97%)	8 (3%)	1 (0%)	43	19
1	D	270/264 (102%)	260 (96%)	8 (3%)	2 (1%)	30	8
All	All	1079/1056 (102%)	1039 (96%)	32 (3%)	8 (1%)	27	8

All (8) Ramachandran outliers are listed below:

Mol	Chain	Res	Type
1	C	94	TYR
1	D	21	ARG
1	A	21	ARG
1	A	22	THR
1	A	94	TYR
1	B	21	ARG
1	B	94	TYR
1	D	94	TYR

5.3.2 Protein sidechains ⓘ

In the following table, the Percentiles column shows the percent sidechain outliers of the chain as a percentile score with respect to all X-ray entries followed by that with respect to entries of similar resolution. The Analysed column shows the number of residues for which the sidechain conformation was analysed, and the total number of residues.

Mol	Chain	Analysed	Rotameric	Outliers	Percentiles	
1	A	241/232 (104%)	236 (98%)	5 (2%)	66	37
1	B	240/232 (103%)	234 (98%)	6 (2%)	60	29
1	C	238/232 (103%)	232 (98%)	6 (2%)	60	29
1	D	240/232 (103%)	235 (98%)	5 (2%)	66	37
All	All	959/928 (103%)	937 (98%)	22 (2%)	63	33

All (22) residues with a non-rotameric sidechain are listed below:

Mol	Chain	Res	Type
1	A	10	LYS
1	A	37	ASN
1	A	76	ASN
1	A	134	ASN
1	A	215	GLN
1	B	37	ASN
1	B	76	ASN
1	B	134	ASN
1	B	149[A]	PHE
1	B	149[B]	PHE
1	B	215	GLN
1	C	7	LEU
1	C	37	ASN
1	C	39	GLN
1	C	76	ASN
1	C	134	ASN
1	C	215	GLN
1	D	37	ASN
1	D	76	ASN
1	D	134	ASN
1	D	165	GLN
1	D	215	GLN

Some sidechains can be flipped to improve hydrogen bonding and reduce clashes. All (61) such sidechains are listed below:

Mol	Chain	Res	Type
1	A	33	GLN
1	A	37	ASN
1	A	39	GLN
1	A	68	ASN
1	A	73	HIS

Continued on next page...

Continued from previous page...

Mol	Chain	Res	Type
1	A	76	ASN
1	A	117	ASN
1	A	134	ASN
1	A	147	HIS
1	A	162	GLN
1	A	190	GLN
1	A	207	HIS
1	A	212	HIS
1	A	215	GLN
1	A	219	GLN
1	B	33	GLN
1	B	37	ASN
1	B	39	GLN
1	B	68	ASN
1	B	73	HIS
1	B	76	ASN
1	B	117	ASN
1	B	134	ASN
1	B	147	HIS
1	B	162	GLN
1	B	165	GLN
1	B	190	GLN
1	B	207	HIS
1	B	212	HIS
1	B	215	GLN
1	B	219	GLN
1	C	32	HIS
1	C	33	GLN
1	C	37	ASN
1	C	68	ASN
1	C	73	HIS
1	C	76	ASN
1	C	108	HIS
1	C	117	ASN
1	C	134	ASN
1	C	147	HIS
1	C	162	GLN
1	C	190	GLN
1	C	207	HIS
1	C	212	HIS
1	C	215	GLN
1	C	219	GLN

Continued on next page...

Continued from previous page...

Mol	Chain	Res	Type
1	D	32	HIS
1	D	33	GLN
1	D	37	ASN
1	D	68	ASN
1	D	76	ASN
1	D	117	ASN
1	D	134	ASN
1	D	147	HIS
1	D	162	GLN
1	D	190	GLN
1	D	207	HIS
1	D	212	HIS
1	D	215	GLN
1	D	219	GLN

5.3.3 RNA ⓘ

There are no RNA chains in this entry.

5.4 Non-standard residues in protein, DNA, RNA chains ⓘ

4 non-standard protein/DNA/RNA residues are modelled in this entry.

In the following table, the Counts columns list the number of bonds (or angles) for which Mogul statistics could be retrieved, the number of bonds (or angles) that are observed in the model and the number of bonds (or angles) that are defined in the chemical component dictionary. The Link column lists molecule types, if any, to which the group is linked. The Z score for a bond length (or angle) is the number of standard deviations the observed value is removed from the expected value. A bond length (or angle) with $|Z| > 2$ is considered an outlier worth inspection. RMSZ is the root-mean-square of all Z scores of the bond lengths (or angles).

Mol	Type	Chain	Res	Link	Bond lengths			Bond angles		
					Counts	RMSZ	$\# Z > 2$	Counts	RMSZ	$\# Z > 2$
1	CXM	A	1	1	10,10,11	5.46	3 (30%)	8,11,13	5.79	2 (25%)
1	CXM	B	1	1	10,10,11	5.53	3 (30%)	8,11,13	1.38	1 (12%)
1	CXM	C	1	1	10,10,11	5.45	2 (20%)	8,11,13	1.67	1 (12%)
1	CXM	D	1	1	10,10,11	5.53	2 (20%)	8,11,13	2.31	1 (12%)

In the following table, the Chirals column lists the number of chiral outliers, the number of chiral centers analysed, the number of these observed in the model and the number defined in the chemical component dictionary. Similar counts are reported in the Torsion and Rings columns. '-' means

no outliers of that kind were identified.

Mol	Type	Chain	Res	Link	Chirals	Torsions	Rings
1	CXM	A	1	1	-	0/8/10/12	0/0/0/0
1	CXM	B	1	1	-	0/8/10/12	0/0/0/0
1	CXM	C	1	1	-	0/8/10/12	0/0/0/0
1	CXM	D	1	1	-	0/8/10/12	0/0/0/0

All (10) bond length outliers are listed below:

Mol	Chain	Res	Type	Atoms	Z	Observed(Å)	Ideal(Å)
1	D	1	CXM	O-C	17.24	1.23	1.11
1	B	1	CXM	O-C	17.14	1.23	1.11
1	C	1	CXM	O-C	16.96	1.23	1.11
1	A	1	CXM	O-C	16.96	1.23	1.11
1	B	1	CXM	CA-C	2.31	1.52	1.48
1	A	1	CXM	ON1-CN	2.20	1.25	1.21
1	C	1	CXM	CA-C	2.05	1.52	1.48
1	D	1	CXM	CA-C	2.04	1.52	1.48
1	B	1	CXM	ON1-CN	2.04	1.25	1.21
1	A	1	CXM	CA-C	2.03	1.52	1.48

All (5) bond angle outliers are listed below:

Mol	Chain	Res	Type	Atoms	Z	Observed(°)	Ideal(°)
1	A	1	CXM	ON2-CN-N	11.77	130.99	116.33
1	A	1	CXM	ON1-CN-N	-11.35	104.64	124.90
1	D	1	CXM	ON2-CN-N	-6.26	108.54	116.33
1	C	1	CXM	ON2-CN-N	-4.61	110.59	116.33
1	B	1	CXM	ON1-CN-N	-3.66	118.37	124.90

There are no chirality outliers.

There are no torsion outliers.

There are no ring outliers.

5.5 Carbohydrates ⓘ

There are no carbohydrates in this entry.

5.6 Ligand geometry ⓘ

40 ligands are modelled in this entry.

In the following table, the Counts columns list the number of bonds (or angles) for which Mogul statistics could be retrieved, the number of bonds (or angles) that are observed in the model and the number of bonds (or angles) that are defined in the chemical component dictionary. The Link column lists molecule types, if any, to which the group is linked. The Z score for a bond length (or angle) is the number of standard deviations the observed value is removed from the expected value. A bond length (or angle) with $|Z| > 2$ is considered an outlier worth inspection. RMSZ is the root-mean-square of all Z scores of the bond lengths (or angles).

Mol	Type	Chain	Res	Link	Bond lengths			Bond angles		
					Counts	RMSZ	# $ Z > 2$	Counts	RMSZ	# $ Z > 2$
2	PO4	A	1266[A]	-	4,4,4	1.25	0	6,6,6	0.46	0
2	PO4	A	1270	-	4,4,4	1.24	0	6,6,6	0.46	0
3	UMP	A	1277[B]	-	21,21,21	1.61	5 (23%)	26,31,31	2.19	5 (19%)
4	GA9	A	1320[A]	-	35,35,35	2.65	10 (28%)	54,54,54	1.14	6 (11%)
4	GA9	A	1320[B]	-	35,35,35	2.64	12 (34%)	54,54,54	0.99	4 (7%)
7	GOL	A	1803	-	5,5,5	0.12	0	5,5,5	0.92	0
7	GOL	A	1804[A]	-	5,5,5	0.28	0	5,5,5	0.74	0
7	GOL	A	1810	-	5,5,5	0.33	0	5,5,5	0.46	0
5	BME	A	1815[A]	1	3,3,3	0.36	0	2,2,2	1.28	0
5	BME	A	1817[A]	1	3,3,3	0.31	0	2,2,2	0.69	0
2	PO4	B	1265[A]	-	4,4,4	1.25	0	6,6,6	0.46	0
2	PO4	B	1269	-	4,4,4	1.27	0	6,6,6	0.46	0
2	PO4	B	1273	-	4,4,4	1.31	0	6,6,6	0.46	0
2	PO4	B	1275	-	4,4,4	1.24	0	6,6,6	0.47	0
3	UMP	B	1278[B]	-	21,21,21	1.64	5 (23%)	26,31,31	2.18	5 (19%)
4	GA9	B	1321[A]	-	35,35,35	2.65	10 (28%)	54,54,54	1.14	4 (7%)
4	GA9	B	1321[B]	-	35,35,35	2.64	12 (34%)	54,54,54	0.99	4 (7%)
7	GOL	B	1801	-	5,5,5	0.12	0	5,5,5	0.64	0
7	GOL	B	1802[A]	-	5,5,5	0.21	0	5,5,5	0.72	0
7	GOL	B	1809	-	5,5,5	0.14	0	5,5,5	0.78	0
6	2BR	B	1819[A]	-	8,8,8	1.79	2 (25%)	10,10,10	1.30	1 (10%)
6	2BR	B	1819[B]	-	8,8,8	2.05	2 (25%)	10,10,10	0.98	0
2	PO4	C	1267[A]	-	4,4,4	1.25	0	6,6,6	0.46	0
2	PO4	C	1271	-	4,4,4	1.26	0	6,6,6	0.46	0
2	PO4	C	1274	-	4,4,4	1.27	0	6,6,6	0.46	0
3	UMP	C	1279[B]	-	21,21,21	1.64	5 (23%)	26,31,31	2.19	5 (19%)
4	GA9	C	1318[A]	-	35,35,35	2.65	10 (28%)	54,54,54	1.13	4 (7%)
4	GA9	C	1318[B]	-	35,35,35	2.63	12 (34%)	54,54,54	1.02	4 (7%)
7	GOL	C	1806	-	5,5,5	0.14	0	5,5,5	0.97	0
7	GOL	C	1808[A]	-	5,5,5	0.18	0	5,5,5	0.50	0
5	BME	C	1816[A]	1	3,3,3	0.49	0	2,2,2	0.95	0
2	PO4	D	1268[A]	-	4,4,4	1.26	0	6,6,6	0.46	0
2	PO4	D	1272	-	4,4,4	1.27	0	6,6,6	0.46	0

Mol	Type	Chain	Res	Link	Bond lengths			Bond angles		
					Counts	RMSZ	# Z > 2	Counts	RMSZ	# Z > 2
2	PO4	D	1276	-	4,4,4	1.29	0	6,6,6	0.46	0
3	UMP	D	1280[B]	-	21,21,21	1.62	5 (23%)	26,31,31	2.16	4 (15%)
4	GA9	D	1319[A]	-	35,35,35	2.64	10 (28%)	54,54,54	1.17	6 (11%)
4	GA9	D	1319[B]	-	35,35,35	2.62	12 (34%)	54,54,54	0.99	4 (7%)
7	GOL	D	1805	-	5,5,5	0.10	0	5,5,5	0.85	0
7	GOL	D	1807[A]	-	5,5,5	0.17	0	5,5,5	0.92	0
5	BME	D	1818[A]	1	3,3,3	0.32	0	2,2,2	0.73	0

In the following table, the Chirals column lists the number of chiral outliers, the number of chiral centers analysed, the number of these observed in the model and the number defined in the chemical component dictionary. Similar counts are reported in the Torsion and Rings columns. '-' means no outliers of that kind were identified.

Mol	Type	Chain	Res	Link	Chirals	Torsions	Rings
2	PO4	A	1266[A]	-	-	0/0/0/0	0/0/0/0
2	PO4	A	1270	-	-	0/0/0/0	0/0/0/0
3	UMP	A	1277[B]	-	-	0/7/22/22	0/2/2/2
4	GA9	A	1320[A]	-	-	0/12/27/27	0/2/5/5
4	GA9	A	1320[B]	-	-	0/12/27/27	0/2/5/5
7	GOL	A	1803	-	-	0/4/4/4	0/0/0/0
7	GOL	A	1804[A]	-	-	0/4/4/4	0/0/0/0
7	GOL	A	1810	-	-	0/4/4/4	0/0/0/0
5	BME	A	1815[A]	1	-	0/1/1/1	0/0/0/0
5	BME	A	1817[A]	1	-	0/1/1/1	0/0/0/0
2	PO4	B	1265[A]	-	-	0/0/0/0	0/0/0/0
2	PO4	B	1269	-	-	0/0/0/0	0/0/0/0
2	PO4	B	1273	-	-	0/0/0/0	0/0/0/0
2	PO4	B	1275	-	-	0/0/0/0	0/0/0/0
3	UMP	B	1278[B]	-	-	0/7/22/22	0/2/2/2
4	GA9	B	1321[A]	-	-	0/12/27/27	0/2/5/5
4	GA9	B	1321[B]	-	-	0/12/27/27	0/2/5/5
7	GOL	B	1801	-	-	0/4/4/4	0/0/0/0
7	GOL	B	1802[A]	-	-	0/4/4/4	0/0/0/0
7	GOL	B	1809	-	-	0/4/4/4	0/0/0/0
6	2BR	B	1819[A]	-	-	0/0/0/0	0/1/1/1
6	2BR	B	1819[B]	-	-	0/0/0/0	0/1/1/1
2	PO4	C	1267[A]	-	-	0/0/0/0	0/0/0/0
2	PO4	C	1271	-	-	0/0/0/0	0/0/0/0
2	PO4	C	1274	-	-	0/0/0/0	0/0/0/0
3	UMP	C	1279[B]	-	-	0/7/22/22	0/2/2/2
4	GA9	C	1318[A]	-	-	0/12/27/27	0/2/5/5
4	GA9	C	1318[B]	-	-	0/12/27/27	0/2/5/5

Continued on next page...

Continued from previous page...

Mol	Type	Chain	Res	Link	Chirals	Torsions	Rings
7	GOL	C	1806	-	-	0/4/4/4	0/0/0/0
7	GOL	C	1808[A]	-	-	0/4/4/4	0/0/0/0
5	BME	C	1816[A]	1	-	0/1/1/1	0/0/0/0
2	PO4	D	1268[A]	-	-	0/0/0/0	0/0/0/0
2	PO4	D	1272	-	-	0/0/0/0	0/0/0/0
2	PO4	D	1276	-	-	0/0/0/0	0/0/0/0
3	UMP	D	1280[B]	-	-	0/7/22/22	0/2/2/2
4	GA9	D	1319[A]	-	-	0/12/27/27	0/2/5/5
4	GA9	D	1319[B]	-	-	0/12/27/27	0/2/5/5
7	GOL	D	1805	-	-	0/4/4/4	0/0/0/0
7	GOL	D	1807[A]	-	-	0/4/4/4	0/0/0/0
5	BME	D	1818[A]	1	-	0/1/1/1	0/0/0/0

All (112) bond length outliers are listed below:

Mol	Chain	Res	Type	Atoms	Z	Observed(Å)	Ideal(Å)
4	B	1321[A]	GA9	C9-C10	8.85	1.48	1.37
4	C	1318[A]	GA9	C9-C10	8.84	1.48	1.37
4	A	1320[A]	GA9	C9-C10	8.83	1.48	1.37
4	D	1319[A]	GA9	C9-C10	8.81	1.48	1.37
4	C	1318[B]	GA9	C9-C10	8.69	1.48	1.37
4	B	1321[B]	GA9	C9-C10	8.68	1.48	1.37
4	A	1320[B]	GA9	C9-C10	8.67	1.48	1.37
4	D	1319[B]	GA9	C9-C10	8.62	1.48	1.37
4	A	1320[A]	GA9	C12-C19	-5.61	1.44	1.54
4	B	1321[A]	GA9	C12-C19	-5.60	1.44	1.54
4	B	1321[B]	GA9	C12-C19	-5.55	1.44	1.54
4	D	1319[A]	GA9	C12-C19	-5.51	1.45	1.54
4	D	1319[B]	GA9	C12-C19	-5.48	1.45	1.54
4	C	1318[A]	GA9	C12-C19	-5.40	1.45	1.54
4	A	1320[B]	GA9	C12-C19	-5.31	1.45	1.54
4	C	1318[B]	GA9	C12-C19	-5.25	1.45	1.54
4	D	1319[A]	GA9	C12-C13	-5.16	1.45	1.54
4	A	1320[A]	GA9	C12-C13	-5.14	1.45	1.54
4	B	1321[A]	GA9	C12-C13	-5.09	1.45	1.54
4	B	1321[B]	GA9	C12-C13	-5.07	1.45	1.54
4	D	1319[B]	GA9	C12-C13	-5.05	1.45	1.54
4	A	1320[B]	GA9	C12-C13	-5.04	1.45	1.54
4	C	1318[A]	GA9	C12-C13	-5.02	1.45	1.54
4	C	1318[B]	GA9	C12-C13	-4.95	1.45	1.54
4	A	1320[A]	GA9	C3-C2	4.84	1.46	1.37
4	A	1320[B]	GA9	C3-C2	4.79	1.46	1.37

Continued on next page...

Continued from previous page...

Mol	Chain	Res	Type	Atoms	Z	Observed(Å)	Ideal(Å)
4	C	1318[A]	GA9	C3-C2	4.79	1.46	1.37
4	B	1321[B]	GA9	C3-C2	4.76	1.46	1.37
4	B	1321[A]	GA9	C3-C2	4.75	1.46	1.37
4	D	1319[A]	GA9	C3-C2	4.71	1.46	1.37
4	C	1318[B]	GA9	C3-C2	4.71	1.46	1.37
4	D	1319[B]	GA9	C3-C2	4.67	1.46	1.37
3	C	1279[B]	UMP	O4'-C1'	4.27	1.52	1.42
3	B	1278[B]	UMP	O4'-C1'	4.24	1.52	1.42
3	A	1277[B]	UMP	O4'-C1'	4.21	1.52	1.42
3	D	1280[B]	UMP	O4'-C1'	4.19	1.52	1.42
6	B	1819[B]	2BR	O3-C16	4.10	1.45	1.36
4	C	1318[A]	GA9	C20-C19	3.36	1.45	1.39
4	D	1319[B]	GA9	C24-C19	3.33	1.44	1.39
4	C	1318[B]	GA9	C24-C19	3.27	1.44	1.39
4	A	1320[A]	GA9	O4-C22	3.27	1.43	1.36
4	B	1321[B]	GA9	C24-C19	3.27	1.44	1.39
4	D	1319[A]	GA9	C20-C19	3.26	1.45	1.39
4	C	1318[B]	GA9	O3-C16	3.26	1.43	1.36
4	A	1320[B]	GA9	O4-C22	3.24	1.43	1.36
4	C	1318[A]	GA9	O3-C16	3.20	1.43	1.36
4	B	1321[A]	GA9	C20-C19	3.19	1.45	1.39
4	B	1321[A]	GA9	O4-C22	3.18	1.43	1.36
4	A	1320[B]	GA9	C24-C19	3.18	1.44	1.39
4	B	1321[A]	GA9	O3-C16	3.17	1.43	1.36
4	D	1319[B]	GA9	O3-C16	3.15	1.43	1.36
4	A	1320[B]	GA9	O3-C16	3.15	1.43	1.36
4	C	1318[B]	GA9	O4-C22	3.15	1.43	1.36
4	C	1318[A]	GA9	O4-C22	3.12	1.42	1.36
4	A	1320[A]	GA9	C20-C19	3.11	1.44	1.39
4	B	1321[B]	GA9	O4-C22	3.11	1.42	1.36
6	B	1819[A]	2BR	O3-C16	3.10	1.42	1.36
4	A	1320[A]	GA9	C18-C13	3.09	1.44	1.39
4	B	1321[A]	GA9	C18-C13	3.09	1.44	1.39
4	B	1321[B]	GA9	O3-C16	3.09	1.42	1.36
4	C	1318[A]	GA9	C18-C13	3.07	1.44	1.39
4	D	1319[A]	GA9	O4-C22	3.07	1.42	1.36
4	A	1320[A]	GA9	O3-C16	3.01	1.42	1.36
4	D	1319[A]	GA9	O3-C16	3.00	1.42	1.36
4	D	1319[B]	GA9	O4-C22	2.99	1.42	1.36
4	D	1319[A]	GA9	C18-C13	2.95	1.44	1.39
4	B	1321[B]	GA9	C18-C13	2.93	1.44	1.39
4	C	1318[B]	GA9	C18-C13	2.90	1.43	1.39

Continued on next page...

Continued from previous page...

Mol	Chain	Res	Type	Atoms	Z	Observed(Å)	Ideal(Å)
4	A	1320[B]	GA9	C18-C13	2.87	1.43	1.39
3	B	1278[B]	UMP	C6-C5	2.86	1.40	1.36
4	D	1319[B]	GA9	C18-C13	2.82	1.43	1.39
3	D	1280[B]	UMP	C6-C5	2.79	1.40	1.36
3	A	1277[B]	UMP	C6-C5	2.78	1.40	1.36
3	C	1279[B]	UMP	C6-C5	2.72	1.40	1.36
3	B	1278[B]	UMP	O4'-C4'	2.66	1.51	1.45
4	A	1320[B]	GA9	C20-C19	2.66	1.44	1.39
3	A	1277[B]	UMP	O4'-C4'	2.64	1.51	1.45
3	C	1279[B]	UMP	O4'-C4'	2.61	1.51	1.45
4	A	1320[B]	GA9	C20-C21	2.59	1.44	1.38
4	C	1318[B]	GA9	C20-C19	2.58	1.43	1.39
3	D	1280[B]	UMP	O4'-C4'	2.57	1.51	1.45
4	C	1318[B]	GA9	C14-C13	2.51	1.43	1.39
4	C	1318[B]	GA9	C20-C21	2.51	1.44	1.38
6	B	1819[A]	2BR	BR1-C15	-2.50	1.83	1.89
4	A	1320[B]	GA9	C14-C13	2.49	1.43	1.39
4	B	1321[B]	GA9	C14-C13	2.47	1.43	1.39
3	B	1278[B]	UMP	C5-C4	2.40	1.46	1.40
3	C	1279[B]	UMP	C2-N1	2.39	1.41	1.38
4	D	1319[B]	GA9	C20-C19	2.39	1.43	1.39
4	D	1319[B]	GA9	C14-C13	2.38	1.43	1.39
4	D	1319[A]	GA9	C14-C13	2.35	1.43	1.39
6	B	1819[B]	2BR	BR1-C15	-2.34	1.83	1.89
4	C	1318[A]	GA9	C14-C13	2.33	1.43	1.39
4	B	1321[B]	GA9	C20-C19	2.32	1.43	1.39
3	D	1280[B]	UMP	C5-C4	2.30	1.46	1.40
4	D	1319[B]	GA9	C20-C21	2.29	1.43	1.38
3	A	1277[B]	UMP	C5-C4	2.29	1.46	1.40
3	C	1279[B]	UMP	C5-C4	2.28	1.46	1.40
3	B	1278[B]	UMP	C2-N1	2.27	1.40	1.38
4	D	1319[B]	GA9	BR1-C15	-2.26	1.83	1.89
4	B	1321[B]	GA9	C20-C21	2.26	1.43	1.38
3	D	1280[B]	UMP	C2-N1	2.26	1.40	1.38
4	B	1321[B]	GA9	BR1-C15	-2.24	1.83	1.89
4	A	1320[A]	GA9	C14-C13	2.22	1.43	1.39
4	A	1320[A]	GA9	C24-C19	2.15	1.42	1.39
4	A	1320[B]	GA9	BR1-C15	-2.15	1.84	1.89
4	D	1319[A]	GA9	C24-C19	2.15	1.42	1.39
4	C	1318[B]	GA9	BR1-C15	-2.11	1.84	1.89
4	B	1321[A]	GA9	C14-C13	2.11	1.43	1.39
4	C	1318[A]	GA9	C24-C19	2.10	1.42	1.39

Continued on next page...

Continued from previous page...

Mol	Chain	Res	Type	Atoms	Z	Observed(Å)	Ideal(Å)
4	B	1321[A]	GA9	C24-C19	2.08	1.42	1.39
3	A	1277[B]	UMP	C2-N1	2.03	1.40	1.38

All (56) bond angle outliers are listed below:

Mol	Chain	Res	Type	Atoms	Z	Observed(°)	Ideal(°)
3	A	1277[B]	UMP	O4'-C1'-N1	8.88	124.38	107.68
3	B	1278[B]	UMP	O4'-C1'-N1	8.88	124.36	107.68
3	C	1279[B]	UMP	O4'-C1'-N1	8.86	124.34	107.68
3	D	1280[B]	UMP	O4'-C1'-N1	8.74	124.10	107.68
3	A	1277[B]	UMP	C6-N1-C2	3.70	124.66	119.51
3	D	1280[B]	UMP	C6-N1-C2	3.60	124.52	119.51
3	C	1279[B]	UMP	C6-N1-C2	3.59	124.51	119.51
3	B	1278[B]	UMP	C6-N1-C2	3.54	124.44	119.51
6	B	1819[A]	2BR	BR1-C15-C16	-3.05	116.69	119.36
4	D	1319[A]	GA9	C20-C21-C22	-3.01	119.35	121.21
4	C	1318[A]	GA9	C20-C21-C22	-3.00	119.35	121.21
3	B	1278[B]	UMP	O4'-C4'-C3'	-2.86	98.40	105.66
3	A	1277[B]	UMP	O4'-C4'-C3'	-2.85	98.44	105.66
3	C	1279[B]	UMP	O4'-C4'-C3'	-2.83	98.48	105.66
3	D	1280[B]	UMP	O4'-C4'-C3'	-2.79	98.58	105.66
4	B	1321[A]	GA9	C20-C21-C22	-2.75	119.50	121.21
4	A	1320[A]	GA9	C20-C21-C22	-2.63	119.58	121.21
4	C	1318[B]	GA9	C13-C12-C10	-2.56	106.27	111.96
4	D	1319[A]	GA9	O1-C1-O2	2.44	120.16	117.21
4	C	1318[B]	GA9	O1-C1-O2	2.42	120.13	117.21
4	A	1320[A]	GA9	O1-C1-O2	2.40	120.11	117.21
4	C	1318[A]	GA9	O1-C1-O2	2.40	120.11	117.21
4	D	1319[A]	GA9	C14-C15-C16	-2.39	119.73	121.21
4	B	1321[B]	GA9	O1-C1-O2	2.39	120.09	117.21
4	D	1319[B]	GA9	O1-C1-O2	2.38	120.08	117.21
3	B	1278[B]	UMP	O4'-C1'-C2'	-2.34	101.63	106.25
4	C	1318[A]	GA9	C5-C6-C11	2.34	119.67	117.58
3	D	1280[B]	UMP	O4'-C1'-C2'	-2.34	101.64	106.25
4	B	1321[A]	GA9	O1-C1-O2	2.34	120.03	117.21
4	A	1320[B]	GA9	O1-C1-O2	2.34	120.03	117.21
3	C	1279[B]	UMP	O4'-C1'-C2'	-2.32	101.67	106.25
4	D	1319[B]	GA9	C13-C12-C10	-2.32	106.79	111.96
4	B	1321[B]	GA9	C13-C12-C10	-2.32	106.80	111.96
4	B	1321[B]	GA9	C5-C6-C11	2.31	119.64	117.58
4	B	1321[A]	GA9	C5-C6-C11	2.29	119.62	117.58
4	A	1320[A]	GA9	C5-C6-C11	2.25	119.58	117.58

Continued on next page...

Continued from previous page...

Mol	Chain	Res	Type	Atoms	Z	Observed(°)	Ideal(°)
4	A	1320[B]	GA9	C5-C6-C11	2.25	119.58	117.58
4	D	1319[A]	GA9	C5-C6-C11	2.24	119.57	117.58
4	C	1318[B]	GA9	C5-C6-C11	2.23	119.56	117.58
4	A	1320[B]	GA9	C13-C12-C10	-2.21	107.04	111.96
3	A	1277[B]	UMP	O4'-C1'-C2'	-2.21	101.90	106.25
4	C	1318[B]	GA9	O1-C12-C13	-2.19	102.05	106.26
4	A	1320[A]	GA9	C13-C12-C10	-2.19	107.08	111.96
4	B	1321[A]	GA9	C13-C12-C10	-2.19	107.09	111.96
4	D	1319[B]	GA9	C5-C6-C11	2.17	119.52	117.58
4	C	1318[A]	GA9	C14-C15-C16	-2.17	119.87	121.21
4	D	1319[B]	GA9	O1-C12-C13	-2.12	102.18	106.26
4	A	1320[A]	GA9	C14-C15-C16	-2.08	119.92	121.21
4	D	1319[A]	GA9	C13-C12-C10	-2.07	107.34	111.96
3	C	1279[B]	UMP	C5-C6-N1	-2.05	118.89	121.21
4	A	1320[B]	GA9	O1-C12-C13	-2.03	102.35	106.26
4	D	1319[A]	GA9	O1-C12-C13	-2.03	102.36	106.26
3	B	1278[B]	UMP	C5-C6-N1	-2.01	118.93	121.21
4	B	1321[B]	GA9	O1-C12-C13	-2.01	102.39	106.26
4	A	1320[A]	GA9	O1-C12-C13	-2.01	102.40	106.26
3	A	1277[B]	UMP	C5-C6-N1	-2.00	118.94	121.21

There are no chirality outliers.

There are no torsion outliers.

There are no ring outliers.

5.7 Other polymers ⓘ

There are no such residues in this entry.

5.8 Polymer linkage issues

There are no chain breaks in this entry.

6 Fit of model and data ⓘ

6.1 Protein, DNA and RNA chains ⓘ

In the following table, the column labelled ‘#RSRZ> 2’ contains the number (and percentage) of RSRZ outliers, followed by percent RSRZ outliers for the chain as percentile scores relative to all X-ray entries and entries of similar resolution. The OWAB column contains the minimum, median, 95th percentile and maximum values of the occupancy-weighted average B-factor per residue. The column labelled ‘Q< 0.9’ lists the number of (and percentage) of residues with an average occupancy less than 0.9.

Mol	Chain	Analysed	<RSRZ>	#RSRZ>2	OWAB(Å ²)	Q<0.9
1	A	264/264 (100%)	0.16	6 (2%) 57 58	13, 24, 37, 68	6 (2%)
1	B	264/264 (100%)	0.09	6 (2%) 57 58	13, 24, 37, 66	7 (2%)
1	C	264/264 (100%)	0.06	5 (1%) 64 65	13, 24, 37, 65	5 (1%)
1	D	264/264 (100%)	0.05	9 (3%) 43 43	13, 24, 37, 65	5 (1%)
All	All	1056/1056 (100%)	0.09	26 (2%) 47 56	13, 24, 37, 68	23 (2%)

All (26) RSRZ outliers are listed below:

Mol	Chain	Res	Type	RSRZ
1	B	22	THR	8.1
1	B	21	ARG	7.4
1	A	21	ARG	6.9
1	C	22	THR	6.5
1	A	22	THR	5.8
1	D	22	THR	5.7
1	D	21	ARG	5.6
1	C	21	ARG	5.4
1	D	20	ASP	5.1
1	C	20	ASP	4.1
1	D	19	ASN	3.8
1	A	20	ASP	3.4
1	B	264	ILE	3.2
1	B	20	ASP	3.0
1	A	83[A]	TRP	2.8
1	A	32[A]	HIS	2.6
1	B	19	ASN	2.6
1	D	83	TRP	2.6
1	C	264	ILE	2.3
1	D	50[A]	CYS	2.3
1	B	83	TRP	2.2

Continued on next page...

Continued from previous page...

Mol	Chain	Res	Type	RSRZ
1	D	149[A]	PHE	2.2
1	A	19	ASN	2.1
1	C	19	ASN	2.1
1	D	264	ILE	2.0
1	D	17	GLN	2.0

6.2 Non-standard residues in protein, DNA, RNA chains ⓘ

In the following table, the Atoms column lists the number of modelled atoms in the group and the number defined in the chemical component dictionary. LLDF column lists the quality of electron density of the group with respect to its neighbouring residues in protein, DNA or RNA chains. The B-factors column lists the minimum, median, 95th percentile and maximum values of B factors of atoms in the group. The column labelled 'Q< 0.9' lists the number of atoms with occupancy less than 0.9.

Mol	Type	Chain	Res	Atoms	RSR	LLDF	B-factors(Å ²)	Q<0.9
1	CXM	D	1	11/12	0.08	-0.45	24,25,30,31	0
1	CXM	C	1	11/12	0.08	-0.62	24,25,30,32	0
1	CXM	B	1	11/12	0.08	-0.81	25,27,33,34	0
1	CXM	A	1	11/12	0.08	-1.06	23,25,30,31	0

6.3 Carbohydrates ⓘ

There are no carbohydrates in this entry.

6.4 Ligands ⓘ

In the following table, the Atoms column lists the number of modelled atoms in the group and the number defined in the chemical component dictionary. LLDF column lists the quality of electron density of the group with respect to its neighbouring residues in protein, DNA or RNA chains. The B-factors column lists the minimum, median, 95th percentile and maximum values of B factors of atoms in the group. The column labelled 'Q< 0.9' lists the number of atoms with occupancy less than 0.9.

Mol	Type	Chain	Res	Atoms	RSR	LLDF	B-factors(Å ²)	Q<0.9
7	GOL	B	1802[A]	6/6	0.44	25.68	49,52,52,53	6
7	GOL	A	1804[A]	6/6	0.41	23.57	48,51,52,52	6
7	GOL	C	1808[A]	6/6	0.57	16.91	59,59,60,60	6
7	GOL	D	1807[A]	6/6	0.48	10.90	54,55,56,56	6
5	BME	D	1818[A]	4/4	0.27	5.90	62,63,63,65	4

Continued on next page...

Continued from previous page...

Mol	Type	Chain	Res	Atoms	RSR	LLDF	B-factors(Å ²)	Q<0.9
4	GA9	C	1318[A]	31/31	0.29	5.09	39,50,57,58	31
4	GA9	C	1318[B]	31/31	0.29	5.00	32,42,44,44	31
6	2BR	B	1819[A]	8/8	0.26	4.28	46,46,47,47	8
7	GOL	B	1801	6/6	0.16	4.26	34,35,38,41	0
7	GOL	D	1805	6/6	0.17	4.18	32,34,36,38	0
4	GA9	D	1319[A]	31/31	0.22	4.14	39,48,53,54	31
6	2BR	B	1819[B]	8/8	0.26	4.10	48,49,50,52	8
4	GA9	D	1319[B]	31/31	0.22	3.95	35,45,49,49	31
4	GA9	B	1321[A]	31/31	0.23	3.78	38,47,53,53	31
4	GA9	B	1321[B]	31/31	0.23	3.68	33,42,45,46	31
7	GOL	A	1803	6/6	0.16	3.63	30,33,33,36	0
4	GA9	A	1320[A]	31/31	0.23	3.43	38,49,53,54	31
4	GA9	A	1320[B]	31/31	0.23	3.34	34,44,48,48	31
3	UMP	D	1280[B]	20/20	0.40	2.91	57,58,60,60	20
2	PO4	D	1276	5/5	0.20	2.77	64,64,64,64	5
2	PO4	C	1274	5/5	0.20	2.55	62,62,62,62	5
7	GOL	C	1806	6/6	0.18	2.55	32,33,34,36	0
2	PO4	B	1273	5/5	0.19	2.42	61,61,62,62	5
2	PO4	A	1270	5/5	0.15	2.29	59,59,60,60	0
2	PO4	D	1272	5/5	0.14	2.28	58,58,59,59	0
3	UMP	C	1279[B]	20/20	0.33	2.20	60,60,61,61	20
7	GOL	B	1809	6/6	0.19	1.90	52,53,54,54	0
3	UMP	A	1277[B]	20/20	0.34	1.89	59,60,61,61	20
3	UMP	B	1278[B]	20/20	0.35	1.76	57,59,60,60	20
2	PO4	B	1275	5/5	0.13	1.37	63,63,64,64	5
5	BME	C	1816[A]	4/4	0.15	0.88	32,33,34,36	4
5	BME	A	1817[A]	4/4	0.23	0.62	61,61,62,62	4
2	PO4	D	1268[A]	5/5	0.23	0.59	59,59,59,60	5
2	PO4	A	1266[A]	5/5	0.25	0.56	60,60,61,61	5
5	BME	A	1815[A]	4/4	0.11	0.51	30,31,31,33	4
2	PO4	C	1267[A]	5/5	0.20	0.48	62,62,62,62	5
2	PO4	B	1265[A]	5/5	0.25	0.47	59,59,60,60	5
2	PO4	B	1269	5/5	0.14	0.43	61,62,62,62	0
7	GOL	A	1810	6/6	0.13	0.10	46,49,50,51	0
2	PO4	C	1271	5/5	0.09	-1.15	55,55,55,56	5

6.5 Other polymers ⓘ

There are no such residues in this entry.