



Full wwPDB X-ray Structure Validation Report

Feb 27, 2014 – 02:47 AM GMT

PDB ID : 3A9W
Title : Crystal structure of L-Threonine bound L-Threonine dehydrogenase (Y137F)
from Hyperthermophilic Archaeon Thermoplasma volcanium
Authors : Yoneda, K.; Sakuraba, H.; Ohshima, T.
Deposited on : 2009-11-07
Resolution : 1.85 Å(reported)

This is a full wwPDB validation report for a publicly released PDB entry.
We welcome your comments at validation@mail.wwpdb.org
A user guide is available at <http://wwpdb.org/ValidationPDFNotes.html>

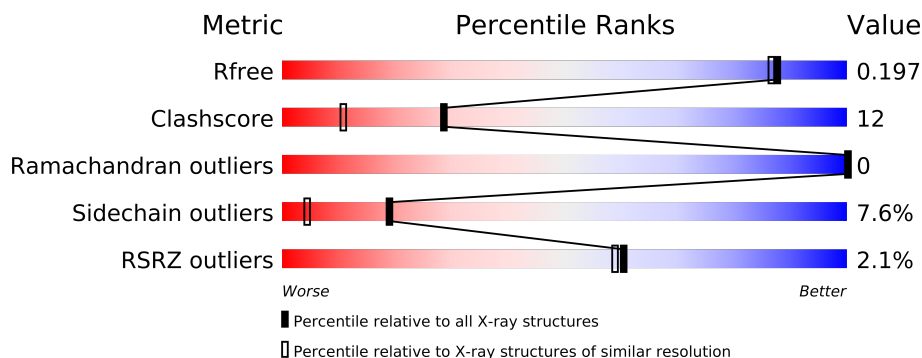
The following versions of software and data (see [references](#)) were used in the production of this report:

MolProbity : 4.02b-467
Mogul : 1.15 2013
Xtriage (Phenix) : dev-1323
EDS : stable22639
Percentile statistics : 21963
Refmac : 5.8.0049
CCP4 : 6.3.0 (Settle)
Ideal geometry (proteins) : Engh & Huber (2001)
Ideal geometry (DNA, RNA) : Parkinson et. al. (1996)
Validation Pipeline (wwPDB-VP) : stable22683

1 Overall quality at a glance

The reported resolution of this entry is 1.85 Å.

Percentile scores (ranging between 0-100) for global validation metrics of the entry are shown in the following graphic. The table shows the number of entries on which the scores are based.



Metric	Whole archive (#Entries)	Similar resolution (#Entries, resolution range(Å))
R_{free}	66092	1269 (1.86-1.86)
Clashscore	79885	1470 (1.86-1.86)
Ramachandran outliers	78287	1451 (1.86-1.86)
Sidechain outliers	78261	1451 (1.86-1.86)
RSRZ outliers	66119	1269 (1.86-1.86)

The table below summarises the geometric issues observed across the polymeric chains and their fit to the electron density. The red, orange, yellow and green segments on the lower bar indicate the fraction of residues that contain outliers for ≥ 3 , 2, 1 and 0 types of geometric quality criteria. The upper red bar (where present) indicates the fraction of residues that have poor fit to the electron density.

Mol	Chain	Length	Quality of chain
1	A	317	
1	B	317	

The following table lists non-polymeric compounds that are outliers for geometric or electron-density-fit criteria:

Mol	Type	Chain	Res	Geometry	Electron density
2	THR	B	318	-	X
3	NAD	A	3001	-	X
3	NAD	B	3002	-	X
4	MRD	A	5276	-	X
5	MPD	B	5277	-	X

2 Entry composition i

There are 6 unique types of molecules in this entry. The entry contains 5349 atoms, of which 0 are hydrogen and 0 are deuterium.

In the tables below, the ZeroOcc column contains the number of atoms modelled with zero occupancy, the AltConf column contains the number of residues with at least one atom in alternate conformation and the Trace column contains the number of residues modelled with at most 2 atoms.

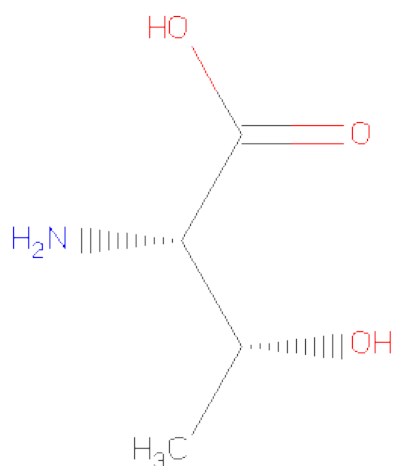
- Molecule 1 is a protein called NDP-sugar epimerase.

Mol	Chain	Residues	Atoms					ZeroOcc	AltConf	Trace
1	A	315	Total	C	N	O	S	0	0	0
			2513	1613	410	482	8			
1	B	309	Total	C	N	O	S	0	0	0
			2469	1586	401	474	8			

There are 2 discrepancies between the modelled and reference sequences:

Chain	Residue	Modelled	Actual	Comment	Reference
A	137	PHE	TYR	ENGINEERED MUTATION	UNP Q97BK3
B	137	PHE	TYR	ENGINEERED MUTATION	UNP Q97BK3

- Molecule 2 is THREONINE (three-letter code: THR) (formula: C₄H₉NO₃).



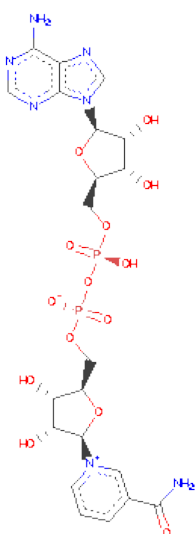
Mol	Chain	Residues	Atoms				ZeroOcc	AltConf
2	A	1	Total	C	N	O	0	0
			8	4	1	3		

Continued on next page...

Continued from previous page...

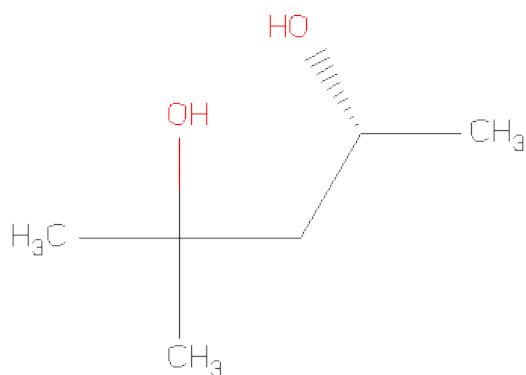
Mol	Chain	Residues	Atoms				ZeroOcc	AltConf
2	B	1	Total	C	N	O	0	0
			8	4	1	3		

- Molecule 3 is NICOTINAMIDE-ADENINE-DINUCLEOTIDE (three-letter code: NAD) (formula: $C_{21}H_{27}N_7O_{14}P_2$).



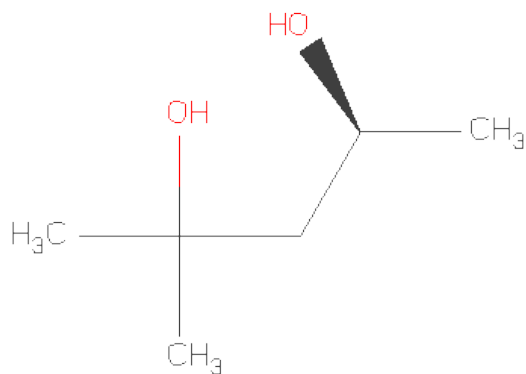
Mol	Chain	Residues	Atoms					ZeroOcc	AltConf
3	A	1	Total	C	N	O	P	0	0
			44	21	7	14	2		
3	B	1	Total	C	N	O	P	0	0
			44	21	7	14	2		

- Molecule 4 is (4R)-2-METHYLPENTANE-2,4-DIOL (three-letter code: MRD) (formula: $C_6H_{14}O_2$).



Mol	Chain	Residues	Atoms			ZeroOcc	AltConf
4	A	1	Total	C	O	0	0
			8	6	2		

- Molecule 5 is (4S)-2-METHYL-2,4-PENTANEDIOL (three-letter code: MPD) (formula: $C_6H_{14}O_2$).



Mol	Chain	Residues	Atoms			ZeroOcc	AltConf
5	B	1	Total	C	O	0	0
			8	6	2		

- Molecule 6 is water.

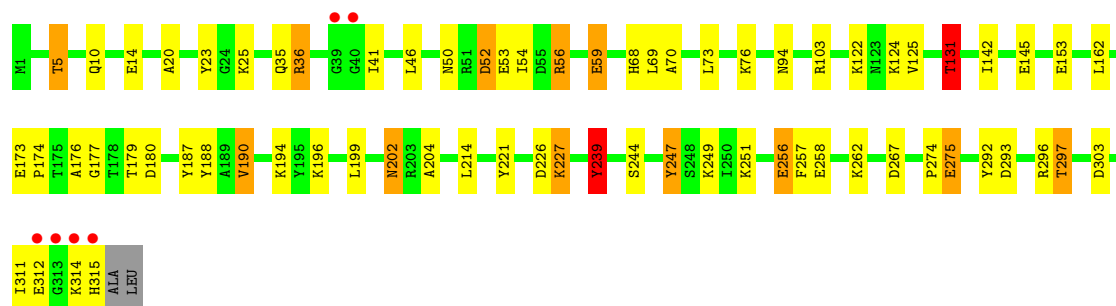
Mol	Chain	Residues	Atoms		ZeroOcc	AltConf
6	A	133	Total 133	O 133	0	0
6	B	114	Total 114	O 114	0	0

3 Residue-property plots

These plots are drawn for all protein, RNA and DNA chains in the entry. The first graphic for a chain summarises the proportions of errors displayed in the second graphic. The second graphic shows the sequence view annotated by issues in geometry and electron density. Residues are color-coded according to the number of geometric quality criteria for which they contain at least one outlier: green = 0, yellow = 1, orange = 2 and red = 3 or more. A red dot above a residue indicates a poor fit to the electron density ($\text{RSRZ} > 2$). Stretches of 2 or more consecutive residues without any outlier are shown as a green connector. Residues present in the sample, but not in the model, are shown in grey.

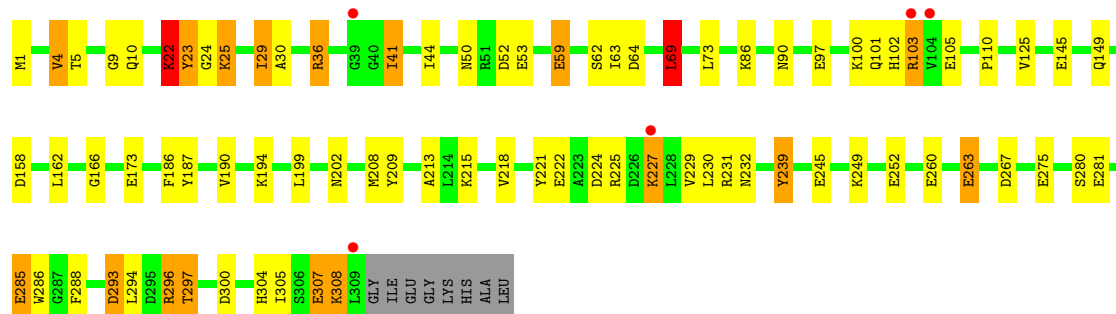
- Molecule 1: NDP-sugar epimerase

Chain A: 



- Molecule 1: NDP-sugar epimerase

Chain B: 



4 Data and refinement statistics

Property	Value	Source
Space group	C 1 2 1	Depositor
Cell constants a, b, c, α , β , γ	150.20Å 46.37Å 89.75Å 90.00° 113.21° 90.00°	Depositor
Resolution (Å)	30.50 – 1.85 30.50 – 1.85	Depositor EDS
% Data completeness (in resolution range)	99.1 (30.50-1.85) 99.3 (30.50-1.85)	Depositor EDS
R_{merge}	(Not available)	Depositor
R_{sym}	0.06	Depositor
$\langle I/\sigma(I) \rangle$ ¹	7.02 (at 1.85Å)	Xtriage
Refinement program	CNS 1.1	Depositor
R, R_{free}	0.191 , 0.209 0.193 , 0.197	Depositor DCC
R_{free} test set	2432 reflections (5.05%)	DCC
Wilson B-factor (Å ²)	19.8	Xtriage
Anisotropy	0.010	Xtriage
Bulk solvent k_{sol} (e/Å ³), B_{sol} (Å ²)	0.38 , 40.3	EDS
Estimated twinning fraction	No twinning to report.	Xtriage
L-test for twinning	$\langle L \rangle = 0.50$, $\langle L^2 \rangle = 0.33$	Xtriage
Outliers	2 of 48190 reflections (0.004%)	Xtriage
F_o, F_c correlation	0.95	EDS
Total number of atoms	5349	wwPDB-VP
Average B, all atoms (Å ²)	21.0	wwPDB-VP

Xtriage's analysis on translational NCS is as follows: *The largest off-origin peak in the Patterson function is 5.62% of the height of the origin peak. No significant pseudotranslation is detected.*

¹Intensities estimated from amplitudes.

5 Model quality ⓘ

5.1 Standard geometry ⓘ

Bond lengths and bond angles in the following residue types are not validated in this section: MRD, MPD, NAD

The Z score for a bond length (or angle) is the number of standard deviations the observed value is removed from the expected value. A bond length (or angle) with $|Z| > 5$ is considered an outlier worth inspection. RMSZ is the root-mean-square of all Z scores of the bond lengths (or angles).

Mol	Chain	Bond lengths		Bond angles	
		RMSZ	# $ Z > 5$	RMSZ	# $ Z > 5$
1	A	1.68	18/2567 (0.7%)	0.91	1/3474 (0.0%)
1	B	1.66	20/2522 (0.8%)	0.90	7/3415 (0.2%)
All	All	1.67	38/5089 (0.7%)	0.91	8/6889 (0.1%)

All (38) bond length outliers are listed below:

Mol	Chain	Res	Type	Atoms	Z	Observed(Å)	Ideal(Å)
1	A	275	GLU	CD-OE1	-7.67	1.17	1.25
1	B	252	GLU	CD-OE2	-6.90	1.18	1.25
1	B	260	GLU	CD-OE1	-6.58	1.18	1.25
1	B	263	GLU	CD-OE2	-6.35	1.18	1.25
1	A	14	GLU	CD-OE2	-6.28	1.18	1.25
1	A	239	TYR	CD1-CE1	-6.26	1.29	1.39
1	A	125	VAL	CB-CG2	-6.09	1.40	1.52
1	A	190	VAL	CB-CG1	-6.08	1.40	1.52
1	A	256	GLU	CD-OE2	-5.96	1.19	1.25
1	B	285	GLU	CD-OE1	-5.89	1.19	1.25
1	B	245	GLU	CD-OE2	-5.87	1.19	1.25
1	A	59	GLU	CG-CD	5.84	1.60	1.51
1	B	275	GLU	CD-OE1	-5.76	1.19	1.25
1	B	285	GLU	CB-CG	-5.75	1.41	1.52
1	B	59	GLU	CB-CG	-5.68	1.41	1.52
1	B	125	VAL	CB-CG2	-5.65	1.41	1.52
1	B	4	VAL	CB-CG2	-5.59	1.41	1.52
1	B	145	GLU	CD-OE2	-5.58	1.19	1.25
1	A	188	TYR	CD2-CE2	-5.58	1.30	1.39
1	B	166	GLY	C-O	-5.54	1.14	1.23
1	B	23	TYR	CD1-CE1	-5.49	1.31	1.39
1	A	244	SER	CB-OG	-5.47	1.35	1.42
1	B	260	GLU	CD-OE2	-5.47	1.19	1.25
1	A	153	GLU	CD-OE1	-5.46	1.19	1.25

Continued on next page...

Continued from previous page...

Mol	Chain	Res	Type	Atoms	Z	Observed(Å)	Ideal(Å)
1	B	221	TYR	CD1-CE1	-5.46	1.31	1.39
1	A	177	GLY	C-O	-5.42	1.15	1.23
1	B	59	GLU	CG-CD	-5.40	1.43	1.51
1	A	247	TYR	CE2-CZ	-5.32	1.31	1.38
1	B	209	TYR	CD2-CE2	-5.29	1.31	1.39
1	A	23	TYR	CD1-CE1	-5.22	1.31	1.39
1	B	296	ARG	CB-CG	-5.17	1.38	1.52
1	A	131	THR	CB-CG2	-5.16	1.35	1.52
1	B	187	TYR	CD1-CE1	-5.15	1.31	1.39
1	A	221	TYR	C-O	-5.15	1.13	1.23
1	A	145	GLU	CD-OE2	-5.14	1.20	1.25
1	A	145	GLU	CD-OE1	-5.12	1.20	1.25
1	B	280	SER	CB-OG	-5.09	1.35	1.42
1	A	214	LEU	C-O	-5.06	1.13	1.23

All (8) bond angle outliers are listed below:

Mol	Chain	Res	Type	Atoms	Z	Observed(°)	Ideal(°)
1	B	263	GLU	CA-CB-CG	6.49	127.68	113.40
1	B	293	ASP	CB-CG-OD1	5.90	123.61	118.30
1	B	64	ASP	CB-CA-C	-5.64	99.12	110.40
1	B	22	LYS	CD-CE-NZ	5.62	124.64	111.70
1	B	69	LEU	CB-CG-CD1	5.48	120.31	111.00
1	B	231	ARG	NE-CZ-NH2	-5.22	117.69	120.30
1	B	36	ARG	NE-CZ-NH1	-5.20	117.70	120.30
1	A	56	ARG	NE-CZ-NH1	5.01	122.80	120.30

There are no chirality outliers.

There are no planarity outliers.

5.2 Close contacts ⓘ

In the following table, the Non-H and H(model) columns list the number of non-hydrogen atoms and hydrogen atoms in the chain respectively. The H(added) column lists the number of hydrogens added by MolProbity. The Clashes column lists the number of clashes within the asymmetric unit, and the number in parentheses is this value normalized per 1000 atoms of the molecule in the chain. The Symm-Clashes column gives symmetry related clashes, in the same way as for the Clashes column.

Mol	Chain	Non-H	H(model)	H(added)	Clashes	Symm-Clashes
1	A	2513	0	2516	48	0

Continued on next page...

Continued from previous page...

Mol	Chain	Non-H	H(model)	H(added)	Clashes	Symm-Clashes
1	B	2469	0	2473	62	0
2	A	8	0	6	3	0
2	B	8	0	6	7	0
3	A	44	0	26	5	0
3	B	44	0	26	13	0
4	A	8	0	14	7	0
5	B	8	0	13	2	0
6	A	133	0	0	5	0
6	B	114	0	0	10	0
All	All	5349	0	5080	127	0

Clashscore is defined as the number of clashes calculated for the entry per 1000 atoms (including hydrogens) of the entry. The overall clashscore for this entry is 12.

All (127) close contacts within the same asymmetric unit are listed below.

Atom-1	Atom-2	Distance(Å)	Clash(Å)
1:A:46:LEU:HG	6:A:439:HOH:O	1.45	1.14
1:B:25:LYS:H	1:B:25:LYS:HE3	0.99	1.09
1:B:308:LYS:HG3	1:B:308:LYS:O	1.51	1.06
2:B:318:THR:HG21	6:B:404:HOH:O	1.58	1.04
4:A:5276:MRD:HMC1	4:A:5276:MRD:H5C3	1.42	1.00
1:A:5:THR:HG21	1:A:68:HIS:ND1	1.78	0.98
1:B:25:LYS:HE3	1:B:25:LYS:N	1.79	0.98
1:B:36:ARG:HG2	1:B:36:ARG:HH11	1.29	0.97
1:B:25:LYS:H	1:B:25:LYS:CE	1.79	0.96
4:A:5276:MRD:CM	4:A:5276:MRD:H5C3	1.97	0.94
1:B:36:ARG:HH11	1:B:36:ARG:CG	1.79	0.93
2:B:318:THR:HG22	3:B:3002:NAD:H4N	1.51	0.92
1:B:22:LYS:HG2	1:B:23:TYR:CE2	2.04	0.92
2:A:318:THR:HB	3:A:3001:NAD:C4N	2.01	0.90
1:B:202:ASN:HB2	6:B:432:HOH:O	1.72	0.90
3:B:3002:NAD:H5N	6:B:404:HOH:O	1.75	0.85
1:B:10:GLN:NE2	3:B:3002:NAD:H72N	1.77	0.82
1:B:73:LEU:HD21	3:B:3002:NAD:H2D	1.63	0.79
1:A:239:TYR:OH	1:A:297:THR:HG21	1.83	0.79
1:A:173:GLU:CD	4:A:5276:MRD:H5C1	2.04	0.78
1:B:50:ASN:OD1	1:B:53:GLU:HG3	1.86	0.75
1:B:4:VAL:CG2	1:B:30:ALA:HA	2.17	0.75
3:B:3002:NAD:C5N	6:B:404:HOH:O	2.31	0.74
1:B:229:VAL:HG22	1:B:285:GLU:OE1	1.86	0.74
1:B:239:TYR:OH	1:B:297:THR:HG21	1.88	0.74
2:B:318:THR:CG2	3:B:3002:NAD:H4N	2.18	0.73

Continued on next page...

Continued from previous page...

Atom-1	Atom-2	Distance(Å)	Clash(Å)
1:B:36:ARG:NH1	1:B:36:ARG:CG	2.44	0.73
2:B:318:THR:HG22	3:B:3002:NAD:C4N	2.20	0.72
1:A:173:GLU:CG	4:A:5276:MRD:H5C1	2.21	0.71
1:A:10:GLN:NE2	3:A:3001:NAD:H72N	1.88	0.70
1:B:73:LEU:CD2	3:B:3002:NAD:H2D	2.23	0.69
2:A:318:THR:HB	3:A:3001:NAD:H4N	1.74	0.69
1:B:225:ARG:NH1	6:B:341:HOH:O	2.22	0.67
1:A:196:LYS:HD2	1:A:262:LYS:HD2	1.77	0.67
1:B:5:THR:O	1:B:69:LEU:HB2	1.94	0.67
2:B:318:THR:CG2	6:B:404:HOH:O	2.28	0.67
1:B:4:VAL:HG23	1:B:4:VAL:O	1.95	0.66
1:B:86:LYS:O	1:B:90:ASN:HB2	1.95	0.66
1:A:247:TYR:OH	1:A:251:LYS:HE3	1.95	0.65
1:B:229:VAL:HG22	1:B:285:GLU:CD	2.17	0.65
1:A:73:LEU:HD21	3:A:3001:NAD:H2D	1.80	0.64
1:B:22:LYS:HG2	1:B:23:TYR:CZ	2.32	0.63
1:B:22:LYS:HG2	1:B:23:TYR:CD2	2.34	0.62
1:B:4:VAL:HG22	1:B:29:ILE:O	1.98	0.62
1:B:229:VAL:HG23	1:B:230:LEU:N	2.14	0.62
1:B:229:VAL:CG2	1:B:285:GLU:OE1	2.46	0.62
1:A:131:THR:HG21	6:B:354:HOH:O	1.99	0.62
1:B:293:ASP:O	1:B:297:THR:HG23	1.99	0.61
1:A:20:ALA:HB1	1:A:25:LYS:HG2	1.83	0.61
4:A:5276:MRD:CM	4:A:5276:MRD:C5	2.75	0.60
1:A:5:THR:CG2	1:A:70:ALA:H	2.16	0.59
1:A:5:THR:HG22	1:A:69:LEU:N	2.18	0.58
1:A:5:THR:HG22	1:A:70:ALA:H	1.68	0.58
1:B:10:GLN:HE21	3:B:3002:NAD:H72N	1.50	0.57
1:A:202:ASN:HB2	6:A:360:HOH:O	2.03	0.57
1:A:190:VAL:CG1	1:A:311:ILE:HG13	2.35	0.57
1:B:300:ASP:O	1:B:304:HIS:HD2	1.89	0.56
1:A:5:THR:HG23	1:A:70:ALA:HB2	1.87	0.55
1:A:25:LYS:HD3	1:A:41:ILE:HG13	1.89	0.55
5:B:5277:MPD:H11	5:B:5277:MPD:O4	2.06	0.55
1:A:174:PRO:HB2	1:A:180:ASP:OD1	2.07	0.54
1:A:131:THR:CG2	1:A:131:THR:O	2.55	0.54
1:A:5:THR:HG23	1:A:70:ALA:CB	2.38	0.54
1:A:59:GLU:HB2	6:A:440:HOH:O	2.07	0.54
1:B:41:ILE:N	1:B:41:ILE:HD13	2.23	0.54
1:B:229:VAL:HG23	1:B:230:LEU:H	1.73	0.54
1:B:63:ILE:O	1:B:103:ARG:NH1	2.41	0.54
1:B:286:TRP:CZ3	1:B:288:PHE:HB2	2.43	0.54

Continued on next page...

Continued from previous page...

Atom-1	Atom-2	Distance(Å)	Clash(Å)
1:A:131:THR:HG23	1:A:142:ILE:HG12	1.90	0.53
1:A:46:LEU:HD12	1:A:53:GLU:HB3	1.91	0.53
1:A:52:ASP:O	1:A:56:ARG:HG3	2.07	0.53
1:B:9:GLY:HA3	3:B:3002:NAD:O5B	2.09	0.52
1:B:29:ILE:HD11	1:B:44:ILE:HD13	1.90	0.52
1:A:173:GLU:HG2	4:A:5276:MRD:H5C1	1.91	0.52
2:B:318:THR:CG2	3:B:3002:NAD:C4N	2.84	0.52
1:A:292:TYR:CD2	1:A:296:ARG:HD2	2.45	0.52
1:A:293:ASP:O	1:A:297:THR:HG23	2.11	0.51
1:B:24:GLY:HA2	1:B:25:LYS:HE3	1.92	0.51
1:A:190:VAL:HG13	1:A:311:ILE:HG13	1.94	0.50
1:A:5:THR:HG22	1:A:69:LEU:H	1.76	0.50
1:A:76:LYS:HB2	1:A:176:ALA:HB1	1.94	0.50
3:B:3002:NAD:C4N	6:B:404:HOH:O	2.58	0.49
1:B:29:ILE:HD11	1:B:44:ILE:CD1	2.43	0.49
1:B:186:PHE:O	1:B:190:VAL:HG13	2.12	0.48
1:B:25:LYS:H	1:B:25:LYS:CD	2.25	0.48
1:B:308:LYS:O	1:B:308:LYS:CG	2.36	0.48
1:B:105:GLU:O	1:B:158:ASP:HB3	2.14	0.48
1:B:293:ASP:O	1:B:297:THR:CG2	2.62	0.47
1:B:305:ILE:HG22	1:B:305:ILE:O	2.13	0.47
2:B:318:THR:CB	6:B:404:HOH:O	2.58	0.46
1:B:149:GLN:HE21	1:B:232:ASN:HD22	1.64	0.46
1:A:46:LEU:CD1	6:A:439:HOH:O	2.59	0.45
1:A:25:LYS:HD3	1:A:41:ILE:CG1	2.46	0.45
1:B:22:LYS:CG	1:B:23:TYR:CE2	2.90	0.45
1:A:179:THR:HG1	2:A:318:THR:N	2.14	0.45
1:B:10:GLN:N	3:B:3002:NAD:O1A	2.47	0.44
1:B:227:LYS:HA	1:B:227:LYS:HD3	1.48	0.44
1:B:199:LEU:HD22	1:B:267:ASP:HA	1.99	0.44
1:A:187:TYR:CE2	4:A:5276:MRD:H5C2	2.53	0.44
1:B:36:ARG:HG3	1:B:36:ARG:NH1	2.30	0.44
1:B:44:ILE:HG13	1:B:44:ILE:O	2.18	0.43
5:B:5277:MPD:O4	5:B:5277:MPD:C1	2.66	0.43
1:A:54:ILE:HD12	1:A:94:ASN:HB3	2.01	0.43
1:A:204:ALA:HB3	1:A:275:GLU:HG2	2.01	0.43
1:A:124:LYS:HD3	1:A:124:LYS:HA	1.81	0.43
1:B:4:VAL:CG2	1:B:4:VAL:O	2.65	0.43
1:B:208:MET:HE1	1:B:213:ALA:HA	2.00	0.43
1:A:226:ASP:OD1	1:A:227:LYS:HG3	2.19	0.42
1:B:229:VAL:CG2	1:B:230:LEU:N	2.79	0.42
1:A:10:GLN:HE22	3:A:3001:NAD:H72N	1.62	0.42

Continued on next page...

Continued from previous page...

Atom-1	Atom-2	Distance(Å)	Clash(Å)
1:B:229:VAL:CG2	1:B:230:LEU:H	2.32	0.42
1:A:35:GLN:O	1:A:36:ARG:HG2	2.20	0.41
1:A:122:LYS:HE3	6:A:372:HOH:O	2.19	0.41
1:A:50:ASN:C	1:A:50:ASN:OD1	2.58	0.41
1:A:122:LYS:HD3	1:A:274:PRO:HA	2.03	0.41
1:B:97:GLU:O	1:B:101:GLN:HG3	2.21	0.41
1:A:293:ASP:O	1:A:297:THR:CG2	2.68	0.41
1:A:194:LYS:HG3	1:A:258:GLU:HG3	2.03	0.41
1:B:149:GLN:NE2	1:B:232:ASN:HD22	2.19	0.41
1:B:281:GLU:OE1	6:B:372:HOH:O	2.22	0.41
1:B:218:VAL:O	1:B:222:GLU:HG3	2.21	0.40
1:A:247:TYR:CZ	1:A:251:LYS:HE3	2.55	0.40
1:B:249:LYS:HE2	1:B:294:LEU:HD23	2.03	0.40
1:B:307:GLU:HG3	1:B:308:LYS:N	2.35	0.40
1:B:173:GLU:HG3	1:B:173:GLU:H	1.61	0.40
1:B:69:LEU:HD12	1:B:110:PRO:HG3	2.02	0.40
1:A:199:LEU:HD22	1:A:267:ASP:HA	2.04	0.40

There are no symmetry-related clashes.

5.3 Torsion angles

5.3.1 Protein backbone ⓘ

In the following table, the Percentiles column shows the percent Ramachandran outliers of the chain as a percentile score with respect to all X-ray entries followed by that with respect to entries of similar resolution. The Analysed column shows the number of residues for which the backbone conformation was analysed, and the total number of residues.

Mol	Chain	Analysed	Favoured	Allowed	Outliers	Percentiles	
1	A	313/317 (99%)	302 (96%)	11 (4%)	0	100	100
1	B	307/317 (97%)	298 (97%)	9 (3%)	0	100	100
All	All	620/634 (98%)	600 (97%)	20 (3%)	0	100	100

There are no Ramachandran outliers to report.

5.3.2 Protein sidechains ⓘ

In the following table, the Percentiles column shows the percent sidechain outliers of the chain as a percentile score with respect to all X-ray entries followed by that with respect to entries of

similar resolution. The Analysed column shows the number of residues for which the sidechain conformation was analysed, and the total number of residues.

Mol	Chain	Analysed	Rotameric	Outliers	Percentiles	
1	A	270/271 (100%)	253 (94%)	17 (6%)	25	7
1	B	266/271 (98%)	243 (91%)	23 (9%)	15	3
All	All	536/542 (99%)	496 (92%)	40 (8%)	19	4

All (40) residues with a non-rotameric sidechain are listed below:

Mol	Chain	Res	Type
1	A	5	THR
1	A	36	ARG
1	A	52	ASP
1	A	103	ARG
1	A	131	THR
1	A	162	LEU
1	A	202	ASN
1	A	227	LYS
1	A	239	TYR
1	A	249	LYS
1	A	256	GLU
1	A	257	PHE
1	A	297	THR
1	A	303	ASP
1	A	312	GLU
1	A	314	LYS
1	A	315	HIS
1	B	1	MET
1	B	22	LYS
1	B	25	LYS
1	B	29	ILE
1	B	41	ILE
1	B	52	ASP
1	B	59	GLU
1	B	62	SER
1	B	69	LEU
1	B	100	LYS
1	B	102	HIS
1	B	103	ARG
1	B	162	LEU
1	B	194	LYS
1	B	215	LYS
1	B	224	ASP

Continued on next page...

Continued from previous page...

Mol	Chain	Res	Type
1	B	227	LYS
1	B	239	TYR
1	B	263	GLU
1	B	296	ARG
1	B	297	THR
1	B	307	GLU
1	B	308	LYS

Some sidechains can be flipped to improve hydrogen bonding and reduce clashes. All (7) such sidechains are listed below:

Mol	Chain	Res	Type
1	A	10	GLN
1	A	94	ASN
1	A	102	HIS
1	B	10	GLN
1	B	94	ASN
1	B	149	GLN
1	B	304	HIS

5.3.3 RNA ⓘ

There are no RNA chains in this entry.

5.4 Non-standard residues in protein, DNA, RNA chains ⓘ

There are no non-standard protein/DNA/RNA residues in this entry.

5.5 Carbohydrates ⓘ

There are no carbohydrates in this entry.

5.6 Ligand geometry ⓘ

6 ligands are modelled in this entry.

In the following table, the Counts columns list the number of bonds (or angles) for which Mogul statistics could be retrieved, the number of bonds (or angles) that are observed in the model and the number of bonds (or angles) that are defined in the chemical component dictionary. The Link column lists molecule types, if any, to which the group is linked. The Z score for a bond length

(or angle) is the number of standard deviations the observed value is removed from the expected value. A bond length (or angle) with $|Z| > 2$ is considered an outlier worth inspection. RMSZ is the root-mean-square of all Z scores of the bond lengths (or angles).

Mol	Type	Chain	Res	Link	Bond lengths			Bond angles		
					Counts	RMSZ	$\# Z > 2$	Counts	RMSZ	$\# Z > 2$
3	NAD	A	3001	-	48,48,48	1.43	6 (12%)	73,73,73	1.79	6 (8%)
2	THR	A	318	-	7,7,7	1.80	1 (14%)	9,9,9	1.03	0
4	MRD	A	5276	-	7,7,7	0.41	0	10,10,10	0.66	0
3	NAD	B	3002	-	48,48,48	1.43	5 (10%)	73,73,73	1.75	8 (10%)
2	THR	B	318	-	7,7,7	1.53	2 (28%)	9,9,9	2.08	3 (33%)
5	MPD	B	5277	-	7,7,7	0.77	0	10,10,10	1.08	1 (10%)

In the following table, the Chirals column lists the number of chiral outliers, the number of chiral centers analysed, the number of these observed in the model and the number defined in the chemical component dictionary. Similar counts are reported in the Torsion and Rings columns. '-' means no outliers of that kind were identified.

Mol	Type	Chain	Res	Link	Chirals	Torsions	Rings
3	NAD	A	3001	-	-	0/30/62/62	0/3/5/5
2	THR	A	318	-	-	0/8/8/8	0/0/0/0
4	MRD	A	5276	-	-	0/5/5/5	0/0/0/0
3	NAD	B	3002	-	-	0/30/62/62	0/3/5/5
2	THR	B	318	-	-	0/8/8/8	0/0/0/0
5	MPD	B	5277	-	-	0/5/5/5	0/0/0/0

All (14) bond length outliers are listed below:

Mol	Chain	Res	Type	Atoms	Z	Observed(Å)	Ideal(Å)
3	B	3002	NAD	O7N-C7N	5.59	1.37	1.24
3	A	3001	NAD	O7N-C7N	5.52	1.37	1.24
2	A	318	THR	OXT-C	-4.62	1.13	1.30
3	B	3002	NAD	C2N-N1N	3.87	1.40	1.35
3	A	3001	NAD	C2N-N1N	3.69	1.40	1.35
3	A	3001	NAD	C2A-N3A	3.56	1.39	1.32
3	B	3002	NAD	C2A-N3A	3.47	1.39	1.32
3	B	3002	NAD	C2A-N1A	3.27	1.40	1.33
3	A	3001	NAD	C2A-N1A	3.05	1.39	1.33
2	B	318	THR	CA-C	-2.31	1.48	1.53
2	B	318	THR	OXT-C	-2.27	1.22	1.30
3	B	3002	NAD	C2B-C1B	-2.18	1.50	1.53
3	A	3001	NAD	C2B-C1B	-2.04	1.50	1.53
3	A	3001	NAD	C2N-C3N	2.03	1.41	1.38

All (18) bond angle outliers are listed below:

Mol	Chain	Res	Type	Atoms	Z	Observed(°)	Ideal(°)
3	B	3002	NAD	N3A-C2A-N1A	-9.77	120.54	128.71
3	A	3001	NAD	N3A-C2A-N1A	-9.67	120.63	128.71
3	A	3001	NAD	C3N-C7N-N7N	5.46	123.98	117.77
3	B	3002	NAD	C3N-C7N-N7N	5.36	123.87	117.77
3	B	3002	NAD	C4B-O4B-C1B	-5.35	103.93	109.75
3	A	3001	NAD	C4B-O4B-C1B	-5.00	104.31	109.75
2	B	318	THR	CB-CA-N	4.15	114.61	109.22
3	A	3001	NAD	O4D-C1D-N1N	3.88	111.92	107.95
2	B	318	THR	OXT-C-CA	3.05	120.26	112.98
3	A	3001	NAD	N3A-C4A-N9A	2.93	130.72	125.43
3	A	3001	NAD	O7N-C7N-N7N	-2.81	118.53	122.59
3	B	3002	NAD	O7N-C7N-N7N	-2.57	118.88	122.59
3	B	3002	NAD	N3A-C4A-N9A	2.53	130.00	125.43
2	B	318	THR	O-C-CA	-2.48	114.05	122.00
3	B	3002	NAD	C4A-C5A-N7A	-2.28	107.57	109.52
3	B	3002	NAD	O4D-C1D-N1N	2.26	110.26	107.95
5	B	5277	MPD	O2-C2-C3	-2.22	101.37	109.16
3	B	3002	NAD	O7N-C7N-C3N	-2.06	117.25	119.58

There are no chirality outliers.

There are no torsion outliers.

There are no ring outliers.

5.7 Other polymers ⓘ

There are no such residues in this entry.

5.8 Polymer linkage issues

There are no chain breaks in this entry.

6 Fit of model and data ⓘ

6.1 Protein, DNA and RNA chains ⓘ

In the following table, the column labelled ‘#RSRZ> 2’ contains the number (and percentage) of RSRZ outliers, followed by percent RSRZ outliers for the chain as percentile scores relative to all X-ray entries and entries of similar resolution. The OWAB column contains the minimum, median, 95th percentile and maximum values of the occupancy-weighted average B-factor per residue. The column labelled ‘Q< 0.9’ lists the number of (and percentage) of residues with an average occupancy less than 0.9.

Mol	Chain	Analysed	<RSRZ>	#RSRZ>2	OWAB(Å ²)	Q<0.9
1	A	315/317 (99%)	-0.31	6 (1%) 64 63	9, 17, 34, 69	0
1	B	309/317 (97%)	-0.14	5 (1%) 68 68	11, 20, 37, 56	0
All	All	624/634 (98%)	-0.22	11 (1%) 60 64	9, 19, 36, 69	0

All (11) RSRZ outliers are listed below:

Mol	Chain	Res	Type	RSRZ
1	A	315	HIS	7.0
1	B	103	ARG	6.1
1	A	314	LYS	4.9
1	A	313	GLY	4.1
1	A	312	GLU	3.0
1	A	39	GLY	2.8
1	B	39	GLY	2.4
1	B	227	LYS	2.3
1	A	40	GLY	2.1
1	B	104	VAL	2.1
1	B	309	LEU	2.0

6.2 Non-standard residues in protein, DNA, RNA chains ⓘ

There are no non-standard protein/DNA/RNA residues in this entry.

6.3 Carbohydrates ⓘ

There are no carbohydrates in this entry.

6.4 Ligands

In the following table, the Atoms column lists the number of modelled atoms in the group and the number defined in the chemical component dictionary. LLDF column lists the quality of electron density of the group with respect to its neighbouring residues in protein, DNA or RNA chains. The B-factors column lists the minimum, median, 95th percentile and maximum values of B factors of atoms in the group. The column labelled 'Q< 0.9' lists the number of atoms with occupancy less than 0.9.

Mol	Type	Chain	Res	Atoms	RSR	LLDF	B-factors(Å ²)	Q<0.9
3	NAD	B	3002	44/44	0.26	4.73	35,42,49,50	0
5	MPD	B	5277	8/8	0.12	3.97	29,31,32,34	0
3	NAD	A	3001	44/44	0.19	3.86	24,33,38,40	0
2	THR	B	318	8/8	0.22	3.70	16,31,36,38	0
4	MRD	A	5276	8/8	0.22	3.25	39,41,44,45	0
2	THR	A	318	8/8	0.14	1.41	12,20,23,23	0

6.5 Other polymers

There are no such residues in this entry.