



wwPDB X-ray Structure Validation Summary Report

Feb 26, 2014 – 11:14 PM GMT

PDB ID : 4AB7
Title : Crystal structure of a tetrameric acetylglutamate kinase from *Saccharomyces cerevisiae* complexed with its substrate N- acetylglutamate
Authors : De Cima, S.; Gil-Ortiz, F.; Crabeel, M.; Fita, I.; Rubio, V.
Deposited on : 2011-12-07
Resolution : 3.25 Å(reported)

This is a wwPDB validation summary report for a publicly released PDB entry.

We welcome your comments at validation@mail.wwpdb.org

A user guide is available at <http://wwpdb.org/ValidationPDFNotes.html>

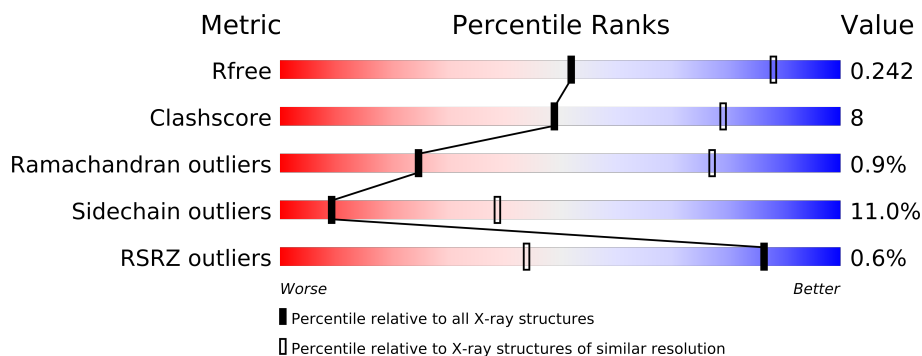
The following versions of software and data (see [references](#)) were used in the production of this report:

MolProbity	:	4.02b-467
Mogul	:	1.15 2013
Xtriage (Phenix)	:	dev-1323
EDS	:	stable22639
Percentile statistics	:	21963
Refmac	:	5.8.0049
CCP4	:	6.3.0 (Settle)
Ideal geometry (proteins)	:	Engh & Huber (2001)
Ideal geometry (DNA, RNA)	:	Parkinson et. al. (1996)
Validation Pipeline (wwPDB-VP)	:	stable22683

1 Overall quality at a glance

The reported resolution of this entry is 3.25 Å.

Percentile scores (ranging between 0-100) for global validation metrics of the entry are shown in the following graphic. The table shows the number of entries on which the scores are based.



Metric	Whole archive (#Entries)	Similar resolution (#Entries, resolution range(Å))
R_{free}	66092	1085 (3.32-3.20)
Clashscore	79885	1374 (3.32-3.20)
Ramachandran outliers	78287	1348 (3.32-3.20)
Sidechain outliers	78261	1346 (3.32-3.20)
RSRZ outliers	66119	1086 (3.32-3.20)

The table below summarises the geometric issues observed across the polymeric chains and their fit to the electron density. The red, orange, yellow and green segments on the lower bar indicate the fraction of residues that contain outliers for ≥ 3 , 2, 1 and 0 types of geometric quality criteria. The upper red bar (where present) indicates the fraction of residues that have poor fit to the electron density.

Mol	Chain	Length	Quality of chain
1	A	464	
1	B	464	
1	C	464	
1	D	464	
1	E	464	
1	F	464	
1	G	464	
1	H	464	

2 Entry composition

There are 2 unique types of molecules in this entry. The entry contains 26320 atoms, of which 0 are hydrogen and 0 are deuterium.

In the tables below, the ZeroOcc column contains the number of atoms modelled with zero occupancy, the AltConf column contains the number of residues with at least one atom in alternate conformation and the Trace column contains the number of residues modelled with at most 2 atoms.

- Molecule 1 is a protein called PROTEIN ARG5,6, MITOCHONDRIAL.

Mol	Chain	Residues	Atoms					ZeroOcc	AltConf	Trace
1	A	405	Total	C	N	O	S	0	0	0
			3140	2002	525	604	9			
1	B	436	Total	C	N	O	S	0	0	0
			3400	2164	572	655	9			
1	C	436	Total	C	N	O	S	0	0	0
			3394	2161	569	655	9			
1	D	405	Total	C	N	O	S	0	0	0
			3140	2002	525	604	9			
1	E	405	Total	C	N	O	S	0	0	0
			3142	2002	527	604	9			
1	F	436	Total	C	N	O	S	0	0	0
			3402	2167	571	655	9			
1	G	436	Total	C	N	O	S	0	0	0
			3396	2161	571	655	9			
1	H	422	Total	C	N	O	S	0	0	0
			3280	2093	547	631	9			

There are 64 discrepancies between the modelled and reference sequences:

Chain	Residue	Modelled	Actual	Comment	Reference
A	50	MET	-	EXPRESSION TAG	UNP Q01217
A	51	GLY	-	EXPRESSION TAG	UNP Q01217
A	52	HIS	-	EXPRESSION TAG	UNP Q01217
A	53	HIS	-	EXPRESSION TAG	UNP Q01217
A	54	HIS	-	EXPRESSION TAG	UNP Q01217
A	55	HIS	-	EXPRESSION TAG	UNP Q01217
A	56	HIS	-	EXPRESSION TAG	UNP Q01217
A	57	HIS	-	EXPRESSION TAG	UNP Q01217
B	50	MET	-	EXPRESSION TAG	UNP Q01217
B	51	GLY	-	EXPRESSION TAG	UNP Q01217
B	52	HIS	-	EXPRESSION TAG	UNP Q01217
B	53	HIS	-	EXPRESSION TAG	UNP Q01217
B	54	HIS	-	EXPRESSION TAG	UNP Q01217

Continued on next page...

Continued from previous page...

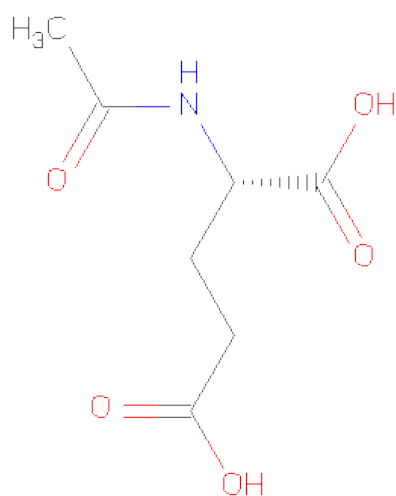
Chain	Residue	Modelled	Actual	Comment	Reference
B	55	HIS	-	EXPRESSION TAG	UNP Q01217
B	56	HIS	-	EXPRESSION TAG	UNP Q01217
B	57	HIS	-	EXPRESSION TAG	UNP Q01217
C	50	MET	-	EXPRESSION TAG	UNP Q01217
C	51	GLY	-	EXPRESSION TAG	UNP Q01217
C	52	HIS	-	EXPRESSION TAG	UNP Q01217
C	53	HIS	-	EXPRESSION TAG	UNP Q01217
C	54	HIS	-	EXPRESSION TAG	UNP Q01217
C	55	HIS	-	EXPRESSION TAG	UNP Q01217
C	56	HIS	-	EXPRESSION TAG	UNP Q01217
C	57	HIS	-	EXPRESSION TAG	UNP Q01217
D	50	MET	-	EXPRESSION TAG	UNP Q01217
D	51	GLY	-	EXPRESSION TAG	UNP Q01217
D	52	HIS	-	EXPRESSION TAG	UNP Q01217
D	53	HIS	-	EXPRESSION TAG	UNP Q01217
D	54	HIS	-	EXPRESSION TAG	UNP Q01217
D	55	HIS	-	EXPRESSION TAG	UNP Q01217
D	56	HIS	-	EXPRESSION TAG	UNP Q01217
D	57	HIS	-	EXPRESSION TAG	UNP Q01217
E	50	MET	-	EXPRESSION TAG	UNP Q01217
E	51	GLY	-	EXPRESSION TAG	UNP Q01217
E	52	HIS	-	EXPRESSION TAG	UNP Q01217
E	53	HIS	-	EXPRESSION TAG	UNP Q01217
E	54	HIS	-	EXPRESSION TAG	UNP Q01217
E	55	HIS	-	EXPRESSION TAG	UNP Q01217
E	56	HIS	-	EXPRESSION TAG	UNP Q01217
E	57	HIS	-	EXPRESSION TAG	UNP Q01217
F	50	MET	-	EXPRESSION TAG	UNP Q01217
F	51	GLY	-	EXPRESSION TAG	UNP Q01217
F	52	HIS	-	EXPRESSION TAG	UNP Q01217
F	53	HIS	-	EXPRESSION TAG	UNP Q01217
F	54	HIS	-	EXPRESSION TAG	UNP Q01217
F	55	HIS	-	EXPRESSION TAG	UNP Q01217
F	56	HIS	-	EXPRESSION TAG	UNP Q01217
F	57	HIS	-	EXPRESSION TAG	UNP Q01217
G	50	MET	-	EXPRESSION TAG	UNP Q01217
G	51	GLY	-	EXPRESSION TAG	UNP Q01217
G	52	HIS	-	EXPRESSION TAG	UNP Q01217
G	53	HIS	-	EXPRESSION TAG	UNP Q01217
G	54	HIS	-	EXPRESSION TAG	UNP Q01217
G	55	HIS	-	EXPRESSION TAG	UNP Q01217
G	56	HIS	-	EXPRESSION TAG	UNP Q01217

Continued on next page...

Continued from previous page...

Chain	Residue	Modelled	Actual	Comment	Reference
G	57	HIS	-	EXPRESSION TAG	UNP Q01217
H	50	MET	-	EXPRESSION TAG	UNP Q01217
H	51	GLY	-	EXPRESSION TAG	UNP Q01217
H	52	HIS	-	EXPRESSION TAG	UNP Q01217
H	53	HIS	-	EXPRESSION TAG	UNP Q01217
H	54	HIS	-	EXPRESSION TAG	UNP Q01217
H	55	HIS	-	EXPRESSION TAG	UNP Q01217
H	56	HIS	-	EXPRESSION TAG	UNP Q01217
H	57	HIS	-	EXPRESSION TAG	UNP Q01217

- Molecule 2 is N-ACETYL-L-GLUTAMATE (three-letter code: NLG) (formula: $C_7H_{11}NO_5$).



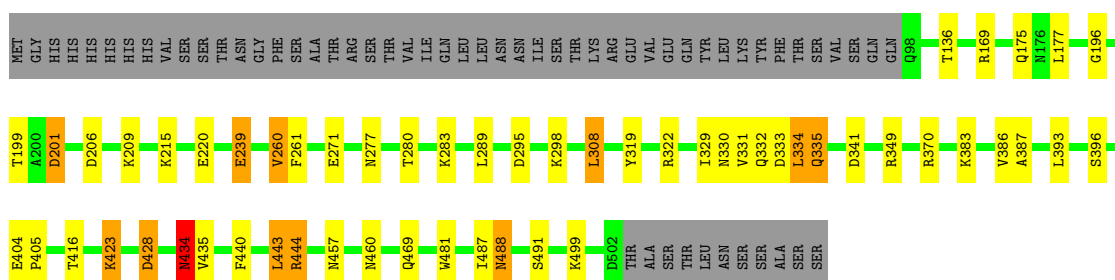
Mol	Chain	Residues	Atoms				ZeroOcc	AltConf
2	D	1	Total	C	N	O	0	0
			13	7	1	5		
2	H	1	Total	C	N	O	0	0
			13	7	1	5		

3 Residue-property plots

These plots are drawn for all protein, RNA and DNA chains in the entry. The first graphic for a chain summarises the proportions of errors displayed in the second graphic. The second graphic shows the sequence view annotated by issues in geometry and electron density. Residues are color-coded according to the number of geometric quality criteria for which they contain at least one outlier: green = 0, yellow = 1, orange = 2 and red = 3 or more. A red dot above a residue indicates a poor fit to the electron density ($RSRZ > 2$). Stretches of 2 or more consecutive residues without any outlier are shown as a green connector. Residues present in the sample, but not in the model, are shown in grey.

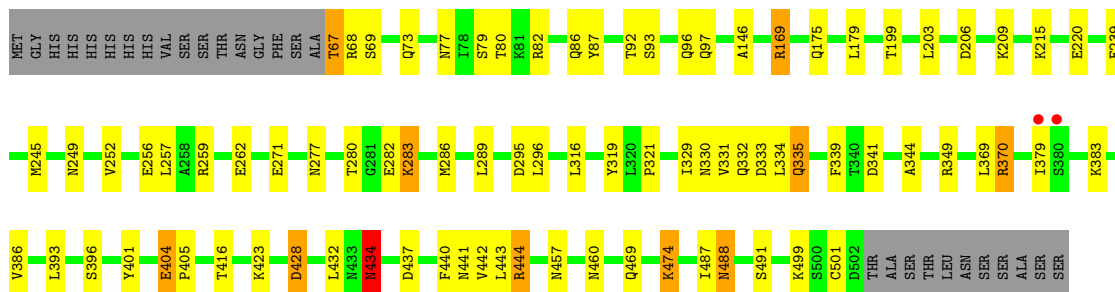
• Molecule 1: PROTEIN ARG5,6, MITOCHONDRIAL

Chain A:



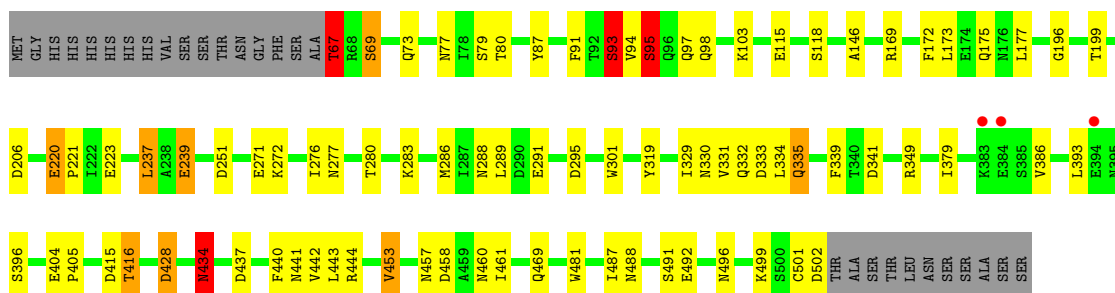
• Molecule 1: PROTEIN ARG5,6, MITOCHONDRIAL

Chain B:



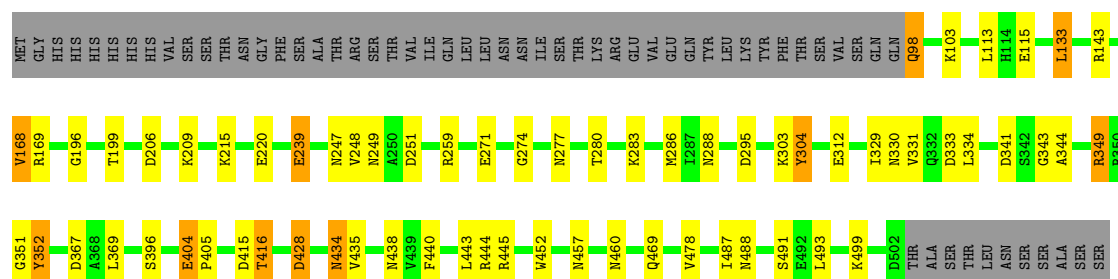
• Molecule 1: PROTEIN ARG5,6, MITOCHONDRIAL

Chain C:



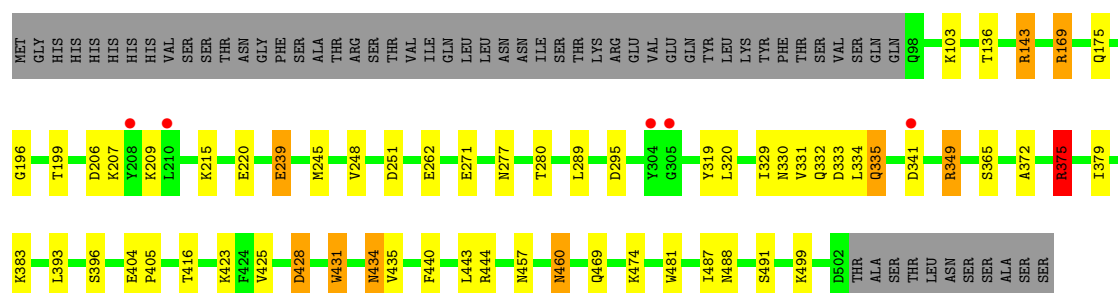
• Molecule 1: PROTEIN ARG5,6, MITOCHONDRIAL

Chain D:



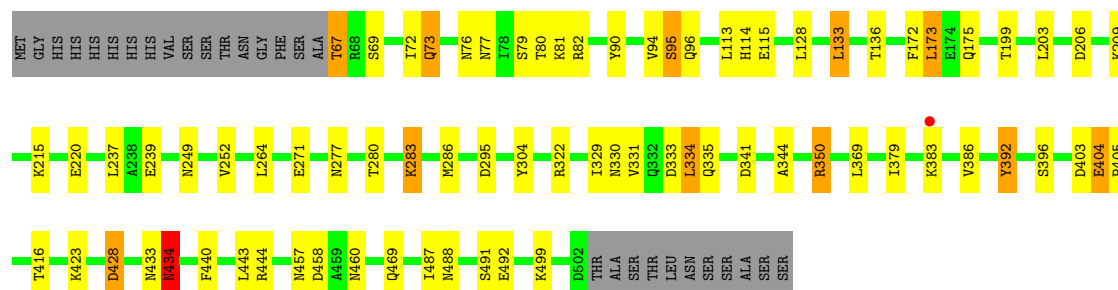
- Molecule 1: PROTEIN ARG5,6, MITOCHONDRIAL

Chain E:



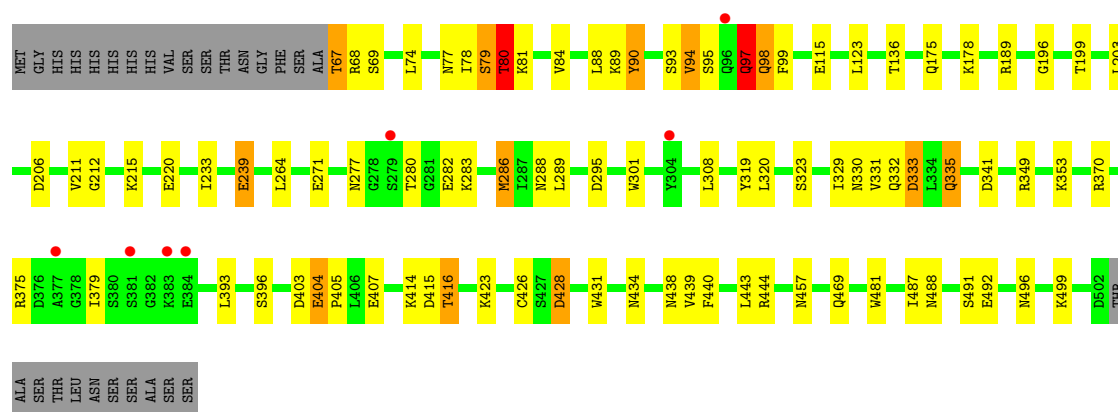
- Molecule 1: PROTEIN ARG5,6, MITOCHONDRIAL

Chain F:



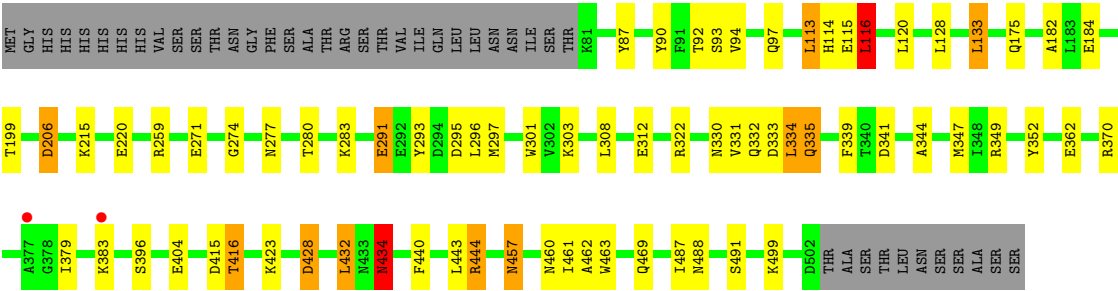
- Molecule 1: PROTEIN ARG5,6, MITOCHONDRIAL

Chain G:



● Molecule 1: PROTEIN ARG5,6, MITOCHONDRIAL

Chain H: 



4 Data and refinement statistics

Property	Value	Source
Space group	P 1	Depositor
Cell constants a, b, c, α , β , γ	92.88Å 103.27Å 111.31Å 77.31° 89.27° 70.43°	Depositor
Resolution (Å)	108.36 – 3.25 48.66 – 3.25	Depositor EDS
% Data completeness (in resolution range)	96.2 (108.36-3.25) 95.6 (48.66-3.25)	Depositor EDS
R_{merge}	0.07	Depositor
R_{sym}	(Not available)	Depositor
$\langle I/\sigma(I) \rangle$ ¹	1.96 (at 3.25Å)	Xtriage
Refinement program	REFMAC 5.6.0117	Depositor
R, R_{free}	0.193 , 0.238 0.197 , 0.242	Depositor DCC
R_{free} test set	2874 reflections (5.30%)	DCC
Wilson B-factor (Å ²)	81.9	Xtriage
Anisotropy	0.066	Xtriage
Bulk solvent k_{sol} (e/Å ³), B_{sol} (Å ²)	0.29 , 53.8	EDS
Estimated twinning fraction	No twinning to report.	Xtriage
L-test for twinning	$\langle L \rangle = 0.46$, $\langle L^2 \rangle = 0.29$	Xtriage
Outliers	0 of 57121 reflections	Xtriage
F_o, F_c correlation	0.94	EDS
Total number of atoms	26320	wwPDB-VP
Average B, all atoms (Å ²)	93.0	wwPDB-VP

Xtriage's analysis on translational NCS is as follows: *The largest off-origin peak in the Patterson function is 3.32% of the height of the origin peak. No significant pseudotranslation is detected.*

¹Intensities estimated from amplitudes.

5 Model quality ⓘ

5.1 Standard geometry ⓘ

Bond lengths and bond angles in the following residue types are not validated in this section: NLG

The Z score for a bond length (or angle) is the number of standard deviations the observed value is removed from the expected value. A bond length (or angle) with $|Z| > 5$ is considered an outlier worth inspection. RMSZ is the root-mean-square of all Z scores of the bond lengths (or angles).

Mol	Chain	Bond lengths		Bond angles	
		RMSZ	# $ Z > 5$	RMSZ	# $ Z > 5$
1	A	0.75	1/3195 (0.0%)	0.90	6/4329 (0.1%)
1	B	0.80	2/3458 (0.1%)	0.96	10/4685 (0.2%)
1	C	0.78	4/3452 (0.1%)	0.94	8/4678 (0.2%)
1	D	0.75	2/3195 (0.1%)	0.94	5/4329 (0.1%)
1	E	0.71	2/3197 (0.1%)	0.89	8/4332 (0.2%)
1	F	0.76	1/3460 (0.0%)	0.93	9/4686 (0.2%)
1	G	0.74	3/3454 (0.1%)	0.99	13/4681 (0.3%)
1	H	0.75	3/3338 (0.1%)	0.92	8/4522 (0.2%)
All	All	0.76	18/26749 (0.1%)	0.93	67/36242 (0.2%)

Chiral center outliers are detected by calculating the chiral volume of a chiral center and verifying if the center is modelled as a planar moiety or with the opposite hand. A planarity outlier is detected by checking planarity of atoms in a peptide group, atoms in a mainchain group or atoms of a sidechain that are expected to be planar.

Mol	Chain	#Chirality outliers	#Planarity outliers
1	B	0	2
1	C	0	1
1	F	0	2
1	G	0	1
All	All	0	6

The worst 5 of 18 bond length outliers are listed below:

Mol	Chain	Res	Type	Atoms	Z	Observed(Å)	Ideal(Å)
1	E	481	TRP	CD2-CE2	6.25	1.48	1.41
1	G	481	TRP	CD2-CE2	6.19	1.48	1.41
1	H	463	TRP	CD2-CE2	6.03	1.48	1.41
1	D	452	TRP	CD2-CE2	5.69	1.48	1.41
1	H	274	GLY	N-CA	-5.59	1.37	1.46

The worst 5 of 67 bond angle outliers are listed below:

Mol	Chain	Res	Type	Atoms	Z	Observed(°)	Ideal(°)
1	G	375	ARG	NE-CZ-NH2	-21.70	109.45	120.30
1	G	375	ARG	NE-CZ-NH1	18.23	129.41	120.30
1	E	143	ARG	NE-CZ-NH1	10.68	125.64	120.30
1	E	375	ARG	NE-CZ-NH2	-9.21	115.69	120.30
1	B	370	ARG	NE-CZ-NH1	9.04	124.82	120.30

There are no chirality outliers.

5 of 6 planarity outliers are listed below:

Mol	Chain	Res	Type	Group
1	B	92	THR	Peptide
1	B	96	GLN	Peptide
1	C	95	SER	Peptide
1	F	95	SER	Peptide
1	F	96	GLN	Peptide

5.2 Close contacts ⓘ

In the following table, the Non-H and H(model) columns list the number of non-hydrogen atoms and hydrogen atoms in the chain respectively. The H(added) column lists the number of hydrogens added by MolProbity. The Clashes column lists the number of clashes within the asymmetric unit, and the number in parentheses is this value normalized per 1000 atoms of the molecule in the chain. The Symm-Clashes column gives symmetry related clashes, in the same way as for the Clashes column.

Mol	Chain	Non-H	H(model)	H(added)	Clashes	Symm-Clashes
1	A	3140	0	0	17	1
1	B	3400	0	6	29	0
1	C	3394	0	6	30	1
1	D	3140	0	0	27	0
1	E	3142	0	0	23	1
1	F	3402	0	6	38	1
1	G	3396	0	6	40	1
1	H	3280	0	0	19	1
2	D	13	0	9	11	0
2	H	13	0	9	1	0
All	All	26320	0	42	204	3

Clashscore is defined as the number of clashes calculated for the entry per 1000 atoms (including hydrogens) of the entry. The overall clashscore for this entry is 8.

The worst 5 of 204 close contacts within the same asymmetric unit are listed below.

Atom-1	Atom-2	Distance(Å)	Clash(Å)
1:B:474:LYS:CE	1:B:501:CYS:SG	2.09	1.39
1:F:72:ILE:O	1:G:89:LYS:NZ	1.65	1.29
1:G:77:ASN:O	1:G:81:LYS:NZ	1.88	1.05
1:D:249:ASN:N	2:D:1503:NLG:H8C3	1.77	0.99
1:D:352:TYR:OH	1:D:435:VAL:CG1	2.11	0.98

All (3) symmetry-related close contacts are listed below. The label for Atom-2 includes the symmetry operator and encoded unit-cell translations to be applied.

Atom-1	Atom-2	Distance(Å)	Clash(Å)
1:A:488:ASN:OD1	1:H:362:GLU:OE2[1_554]	1.75	0.45
1:E:207:LYS:NZ	1:G:282:GLU:OE2[1_545]	2.14	0.06
1:C:146:ALA:O	1:F:433:ASN:ND2[1_655]	2.19	0.01

5.3 Torsion angles

5.3.1 Protein backbone ⓘ

In the following table, the Percentiles column shows the percent Ramachandran outliers of the chain as a percentile score with respect to all X-ray entries followed by that with respect to entries of similar resolution. The Analysed column shows the number of residues for which the backbone conformation was analysed, and the total number of residues.

Mol	Chain	Analysed	Favoured	Allowed	Outliers	Percentiles	
1	A	403/464 (87%)	371 (92%)	29 (7%)	3 (1%)	30	81
1	B	434/464 (94%)	397 (92%)	32 (7%)	5 (1%)	19	72
1	C	434/464 (94%)	397 (92%)	33 (8%)	4 (1%)	25	77
1	D	403/464 (87%)	370 (92%)	31 (8%)	2 (0%)	38	86
1	E	403/464 (87%)	369 (92%)	31 (8%)	3 (1%)	30	81
1	F	434/464 (94%)	395 (91%)	36 (8%)	3 (1%)	30	81
1	G	434/464 (94%)	392 (90%)	36 (8%)	6 (1%)	16	68
1	H	420/464 (90%)	386 (92%)	30 (7%)	4 (1%)	22	75
All	All	3365/3712 (91%)	3077 (91%)	258 (8%)	30 (1%)	25	77

5 of 30 Ramachandran outliers are listed below:

Mol	Chain	Res	Type
1	A	416	THR

Continued on next page...

Continued from previous page...

Mol	Chain	Res	Type
1	A	487	ILE
1	B	416	THR
1	C	93	SER
1	C	416	THR

5.3.2 Protein sidechains ⓘ

In the following table, the Percentiles column shows the percent sidechain outliers of the chain as a percentile score with respect to all X-ray entries followed by that with respect to entries of similar resolution. The Analysed column shows the number of residues for which the sidechain conformation was analysed, and the total number of residues.

Mol	Chain	Analysed	Rotameric	Outliers	Percentiles	
1	A	340/397 (86%)	300 (88%)	40 (12%)	8	35
1	B	371/397 (94%)	328 (88%)	43 (12%)	8	36
1	C	370/397 (93%)	333 (90%)	37 (10%)	11	43
1	D	340/397 (86%)	299 (88%)	41 (12%)	7	34
1	E	340/397 (86%)	307 (90%)	33 (10%)	12	45
1	F	372/397 (94%)	334 (90%)	38 (10%)	11	42
1	G	370/397 (93%)	331 (90%)	39 (10%)	10	41
1	H	355/397 (89%)	312 (88%)	43 (12%)	7	34
All	All	2858/3176 (90%)	2544 (89%)	314 (11%)	9	39

5 of 314 residues with a non-rotameric sidechain are listed below:

Mol	Chain	Res	Type
1	D	349	ARG
1	E	333	ASP
1	H	303	LYS
1	D	396	SER
1	D	493	LEU

Some sidechains can be flipped to improve hydrogen bonding and reduce clashes. There are no such sidechains identified.

5.3.3 RNA ⓘ

There are no RNA chains in this entry.

5.4 Non-standard residues in protein, DNA, RNA chains ⓘ

There are no non-standard protein/DNA/RNA residues in this entry.

5.5 Carbohydrates ⓘ

There are no carbohydrates in this entry.

5.6 Ligand geometry ⓘ

2 ligands are modelled in this entry.

In the following table, the Counts columns list the number of bonds (or angles) for which Mogul statistics could be retrieved, the number of bonds (or angles) that are observed in the model and the number of bonds (or angles) that are defined in the chemical component dictionary. The Link column lists molecule types, if any, to which the group is linked. The Z score for a bond length (or angle) is the number of standard deviations the observed value is removed from the expected value. A bond length (or angle) with $|Z| > 2$ is considered an outlier worth inspection. RMSZ is the root-mean-square of all Z scores of the bond lengths (or angles).

Mol	Type	Chain	Res	Link	Bond lengths			Bond angles		
					Counts	RMSZ	$\# Z > 2$	Counts	RMSZ	$\# Z > 2$
2	NLG	D	1503	-	12,12,12	2.17	2 (16%)	15,15,15	2.03	6 (40%)
2	NLG	H	1503	-	12,12,12	1.94	3 (25%)	15,15,15	1.40	2 (13%)

In the following table, the Chirals column lists the number of chiral outliers, the number of chiral centers analysed, the number of these observed in the model and the number defined in the chemical component dictionary. Similar counts are reported in the Torsion and Rings columns. '-' means no outliers of that kind were identified.

Mol	Type	Chain	Res	Link	Chirals	Torsions	Rings
2	NLG	D	1503	-	-	0/13/13/13	0/0/0/0
2	NLG	H	1503	-	-	0/13/13/13	0/0/0/0

All (5) bond length outliers are listed below:

Mol	Chain	Res	Type	Atoms	Z	Observed(Å)	Ideal(Å)
2	D	1503	NLG	C8-C7	-5.85	1.38	1.50
2	H	1503	NLG	C8-C7	-4.68	1.40	1.50
2	H	1503	NLG	CA-C	3.00	1.60	1.52
2	D	1503	NLG	CG-CD	2.70	1.57	1.50
2	H	1503	NLG	CG-CD	2.41	1.56	1.50

The worst 5 of 8 bond angle outliers are listed below:

Mol	Chain	Res	Type	Atoms	Z	Observed(°)	Ideal(°)
2	D	1503	NLG	CB-CA-N2	4.97	120.31	110.83
2	H	1503	NLG	C-CA-N2	2.85	117.89	110.53
2	H	1503	NLG	O7-C7-C8	-2.73	116.72	122.04
2	D	1503	NLG	C8-C7-N2	2.70	121.39	116.11
2	D	1503	NLG	CB-CA-C	-2.53	105.27	110.71

There are no chirality outliers.

There are no torsion outliers.

There are no ring outliers.

5.7 Other polymers ⓘ

There are no such residues in this entry.

5.8 Polymer linkage issues

There are no chain breaks in this entry.

6 Fit of model and data ⓘ

6.1 Protein, DNA and RNA chains ⓘ

In the following table, the column labelled ‘#RSRZ> 2’ contains the number (and percentage) of RSRZ outliers, followed by percent RSRZ outliers for the chain as percentile scores relative to all X-ray entries and entries of similar resolution. The OWAB column contains the minimum, median, 95th percentile and maximum values of the occupancy-weighted average B-factor per residue. The column labelled ‘Q< 0.9’ lists the number of (and percentage) of residues with an average occupancy less than 0.9.

Mol	Chain	Analysed	<RSRZ>	#RSRZ>2	OWAB(Å ²)	Q<0.9
1	A	405/464 (87%)	-0.25	0 100 100	46, 81, 135, 187	0
1	B	436/464 (93%)	-0.22	2 (0%) 88 48	37, 73, 149, 245	0
1	C	436/464 (93%)	-0.22	3 (0%) 84 40	35, 73, 151, 219	0
1	D	405/464 (87%)	-0.21	0 100 100	45, 80, 142, 205	0
1	E	405/464 (87%)	-0.00	5 (1%) 75 28	55, 103, 230, 344	0
1	F	436/464 (93%)	-0.20	1 (0%) 93 67	45, 83, 151, 217	0
1	G	436/464 (93%)	-0.06	7 (1%) 68 22	53, 96, 184, 263	0
1	H	422/464 (90%)	-0.13	2 (0%) 88 48	50, 86, 170, 237	0
All	All	3381/3712 (91%)	-0.16	20 (0%) 86 44	35, 84, 166, 344	0

The worst 5 of 20 RSRZ outliers are listed below:

Mol	Chain	Res	Type	RSRZ
1	G	383	LYS	6.1
1	G	96	GLN	5.0
1	E	341	ASP	4.1
1	H	383	LYS	4.0
1	C	383	LYS	3.7

6.2 Non-standard residues in protein, DNA, RNA chains ⓘ

There are no non-standard protein/DNA/RNA residues in this entry.

6.3 Carbohydrates ⓘ

There are no carbohydrates in this entry.

6.4 Ligands ⓘ

In the following table, the Atoms column lists the number of modelled atoms in the group and the number defined in the chemical component dictionary. LLDF column lists the quality of electron density of the group with respect to its neighbouring residues in protein, DNA or RNA chains. The B-factors column lists the minimum, median, 95th percentile and maximum values of B factors of atoms in the group. The column labelled 'Q< 0.9' lists the number of atoms with occupancy less than 0.9.

Mol	Type	Chain	Res	Atoms	RSR	LLDF	B-factors(Å ²)	Q<0.9
2	NLG	H	1503	13/13	0.22	1.71	64,81,101,106	0
2	NLG	D	1503	13/13	0.20	0.65	48,59,72,79	0

6.5 Other polymers ⓘ

There are no such residues in this entry.