



# wwPDB X-ray Structure Validation Summary Report

Feb 27, 2014 – 08:26 AM GMT

PDB ID : 1ACM  
Title : ARGININE 54 IN THE ACTIVE SITE OF ESCHERICHIA COLI ASPARTATE TRANSCARBAMOYLASE IS CRITICAL FOR CATALYSIS: A SITE-SPECIFIC MUTAGENESIS, NMR AND X-RAY CRYSTALLOGRAPHY STUDY  
Authors : Stevens, R.C.; Kantrowitz, E.R.; Lipscomb, W.N.  
Deposited on : 1992-07-08  
Resolution : 2.80 Å(reported)

This is a wwPDB validation summary report for a publicly released PDB entry.  
We welcome your comments at [validation@mail.wwpdb.org](mailto:validation@mail.wwpdb.org)  
A user guide is available at <http://wwpdb.org/ValidationPDFNotes.html>

---

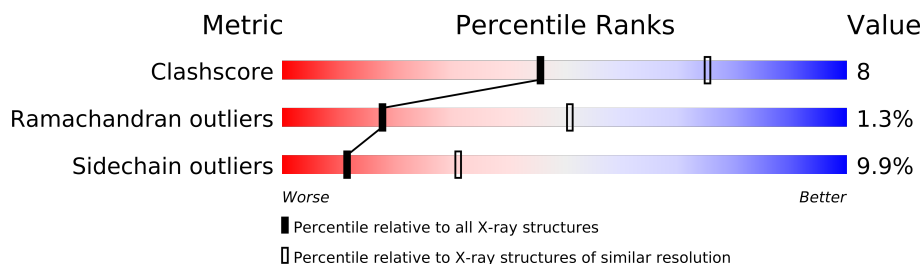
The following versions of software and data (see [references](#)) were used in the production of this report:

MolProbity : 4.02b-467  
Mogul : 1.15 2013  
Xtriage (Phenix) : **NOT EXECUTED**  
EDS : **NOT EXECUTED**  
Percentile statistics : 21963  
Ideal geometry (proteins) : Engh & Huber (2001)  
Ideal geometry (DNA, RNA) : Parkinson et. al. (1996)  
Validation Pipeline (wwPDB-VP) : stable22683

# 1 Overall quality at a glance

The reported resolution of this entry is 2.80 Å.

Percentile scores (ranging between 0-100) for global validation metrics of the entry are shown in the following graphic. The table shows the number of entries on which the scores are based.



Metric	Whole archive (#Entries)	Similar resolution (#Entries, resolution range(Å))
Clashscore	79885	2295 (2.80-2.80)
Ramachandran outliers	78287	2252 (2.80-2.80)
Sidechain outliers	78261	2254 (2.80-2.80)

The table below summarises the geometric issues observed across the polymeric chains and their fit to the electron density. The red, orange, yellow and green segments on the lower bar indicate the fraction of residues that contain outliers for  $\geq 3$ , 2, 1 and 0 types of geometric quality criteria. The upper red bar (where present) indicates the fraction of residues that have poor fit to the electron density.

Note EDS was not executed.

Mol	Chain	Length	Quality of chain
1	A	310	
1	C	310	
2	B	153	
2	D	153	

## 2 Entry composition

There are 5 unique types of molecules in this entry. The entry contains 7143 atoms, of which 0 are hydrogen and 0 are deuterium.

In the tables below, the ZeroOcc column contains the number of atoms modelled with zero occupancy, the AltConf column contains the number of residues with at least one atom in alternate conformation and the Trace column contains the number of residues modelled with at most 2 atoms.

- Molecule 1 is a protein called ASPARTATE CARBAMOYLTRANSFERASE,CATALYTIC CHAIN.

Mol	Chain	Residues	Atoms					ZeroOcc	AltConf	Trace
1	A	310	Total	C	N	O	S	0	0	0
			2409	1524	420	456	9			
1	C	310	Total	C	N	O	S	0	0	0
			2409	1524	420	456	9			

There are 10 discrepancies between the modelled and reference sequences:

Chain	Residue	Modelled	Actual	Comment	Reference
A	54	ALA	ARG	CONFLICT	UNP P0A786
A	60	GLN	GLU	CONFLICT	UNP P0A786
A	147	GLN	GLU	CONFLICT	UNP P0A786
A	149	GLU	GLN	CONFLICT	UNP P0A786
A	196	GLU	GLN	CONFLICT	UNP P0A786
C	54	ALA	ARG	CONFLICT	UNP P0A786
C	60	GLN	GLU	CONFLICT	UNP P0A786
C	147	GLN	GLU	CONFLICT	UNP P0A786
C	149	GLU	GLN	CONFLICT	UNP P0A786
C	196	GLU	GLN	CONFLICT	UNP P0A786

- Molecule 2 is a protein called ASPARTATE CARBAMOYLTRANSFERASE REGULATORY CHAIN.

Mol	Chain	Residues	Atoms					ZeroOcc	AltConf	Trace
2	B	146	Total	C	N	O	S	0	0	0
			1138	714	201	218	5			
2	D	146	Total	C	N	O	S	0	0	0
			1138	714	201	218	5			

There are 2 discrepancies between the modelled and reference sequences:

Chain	Residue	Modelled	Actual	Comment	Reference
B	8	GLY	GLN	CONFLICT	UNP P0A7F3

*Continued on next page...*

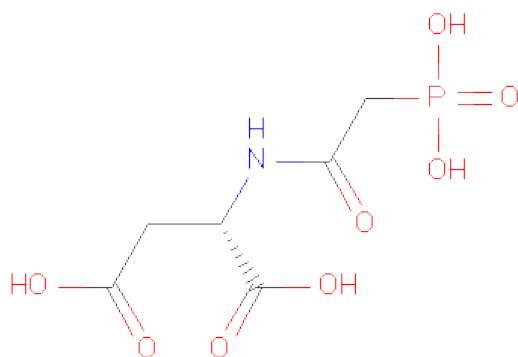
*Continued from previous page...*

Chain	Residue	Modelled	Actual	Comment	Reference
D	8	GLY	GLN	CONFLICT	UNP P0A7F3

- Molecule 3 is ZINC ION (three-letter code: ZN) (formula: Zn).

Mol	Chain	Residues	Atoms		ZeroOcc	AltConf
3	B	1	Total	Zn	0	0
			1	1		
3	D	1	Total	Zn	0	0
			1	1		

- Molecule 4 is N-(PHOSPHONACETYL)-L-ASPARTICACID (three-letter code: PAL) (formula: C<sub>6</sub>H<sub>10</sub>NO<sub>8</sub>P).



Mol	Chain	Residues	Atoms					ZeroOcc	AltConf
4	A	1	Total	C	N	O	P	0	0
			16	6	1	8	1		
4	C	1	Total	C	N	O	P	0	0
			16	6	1	8	1		

- Molecule 5 is water.

Mol	Chain	Residues	Atoms		ZeroOcc	AltConf
5	A	8	Total	O	0	0
			8	8		
5	C	7	Total	O	0	0
			7	7		

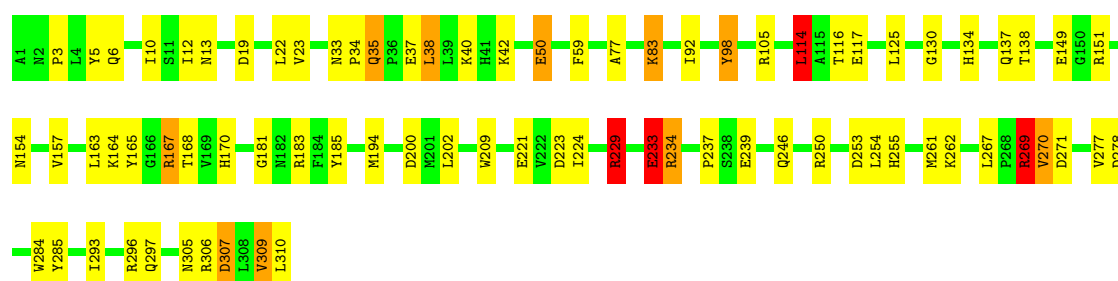
### 3 Residue-property plots

These plots are drawn for all protein, RNA and DNA chains in the entry. The first graphic for a chain summarises the proportions of errors displayed in the second graphic. The second graphic shows the sequence view annotated by issues in geometry and electron density. Residues are color-coded according to the number of geometric quality criteria for which they contain at least one outlier: green = 0, yellow = 1, orange = 2 and red = 3 or more. A red dot above a residue indicates a poor fit to the electron density ( $RSRZ > 2$ ). Stretches of 2 or more consecutive residues without any outlier are shown as a green connector. Residues present in the sample, but not in the model, are shown in grey.

Note EDS was not executed.

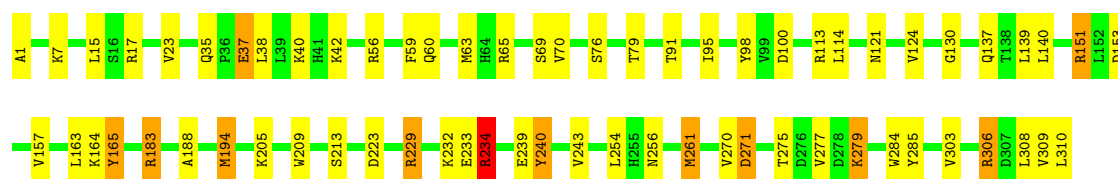
#### • Molecule 1: ASPARTATE CARBAMOYLTRANSFERASE,CATALYTIC CHAIN

Chain A: 



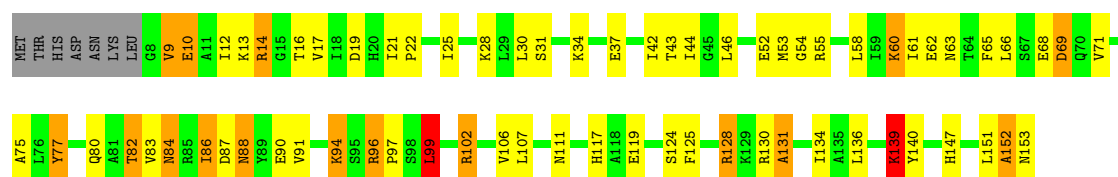
#### • Molecule 1: ASPARTATE CARBAMOYLTRANSFERASE,CATALYTIC CHAIN

Chain C: 



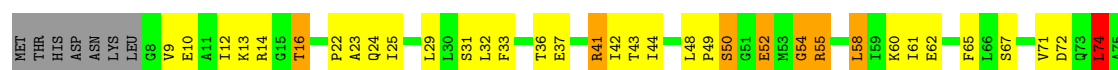
#### • Molecule 2: ASPARTATE CARBAMOYLTRANSFERASE REGULATORY CHAIN

Chain B: 



#### • Molecule 2: ASPARTATE CARBAMOYLTRANSFERASE REGULATORY CHAIN

Chain D: 



L76	Y77	Y89	P97	S98	L99	P100	E101	R102	I103	D104	N105	V106	L107	V108	C109	P110	C114	I115	S116	S124	F125	A126	V127	R128	K129	R130	A131	R132	D133	I134	A135	L136	Y140	H147	L151	A152	N153
-----	-----	-----	-----	-----	-----	------	------	------	------	------	------	------	------	------	------	------	------	------	------	------	------	------	------	------	------	------	------	------	------	------	------	------	------	------	------	------	------

## 4 Data and refinement statistics

Xtriage (Phenix) and EDS were not executed - this section will therefore be incomplete.

Property	Value	Source
Space group	P 3 2 1	Depositor
Cell constants a, b, c, $\alpha$ , $\beta$ , $\gamma$	122.20Å 122.20Å 156.20Å 90.00° 90.00° 120.00°	Depositor
Resolution (Å)	8.00 – 2.80	Depositor
% Data completeness (in resolution range)	(Not available) (8.00-2.80)	Depositor
$R_{merge}$	(Not available)	Depositor
$R_{sym}$	(Not available)	Depositor
Refinement program	X-PLOR	Depositor
R, $R_{free}$	0.180 , (Not available)	Depositor
Estimated twinning fraction	No twinning to report.	Xtriage
Total number of atoms	7143	wwPDB-VP
Average B, all atoms (Å <sup>2</sup> )	32.0	wwPDB-VP

## 5 Model quality

### 5.1 Standard geometry

Bond lengths and bond angles in the following residue types are not validated in this section: ZN, PAL

The Z score for a bond length (or angle) is the number of standard deviations the observed value is removed from the expected value. A bond length (or angle) with  $|Z| > 5$  is considered an outlier worth inspection. RMSZ is the root-mean-square of all Z scores of the bond lengths (or angles).

Mol	Chain	Bond lengths		Bond angles	
		RMSZ	$\# Z  > 5$	RMSZ	$\# Z  > 5$
1	A	0.82	0/2455	1.55	28/3332 (0.8%)
1	C	0.86	0/2455	1.53	36/3332 (1.1%)
2	B	0.71	0/1155	1.53	16/1561 (1.0%)
2	D	0.75	0/1155	1.52	13/1561 (0.8%)
All	All	0.81	0/7220	1.54	93/9786 (1.0%)

Chiral center outliers are detected by calculating the chiral volume of a chiral center and verifying if the center is modelled as a planar moiety or with the opposite hand. A planarity outlier is detected by checking planarity of atoms in a peptide group, atoms in a mainchain group or atoms of a sidechain that are expected to be planar.

Mol	Chain	#Chirality outliers	#Planarity outliers
1	A	0	3
1	C	0	3
2	B	0	2
2	D	0	3
All	All	0	11

There are no bond length outliers.

The worst 5 of 93 bond angle outliers are listed below:

Mol	Chain	Res	Type	Atoms	Z	Observed(°)	Ideal(°)
1	A	229	ARG	NE-CZ-NH1	16.61	128.61	120.30
1	A	229	ARG	NE-CZ-NH2	-11.37	114.62	120.30
1	A	167	ARG	NE-CZ-NH1	10.65	125.62	120.30
1	C	234	ARG	NE-CZ-NH2	-10.59	115.01	120.30
1	A	233	GLU	CA-CB-CG	9.92	135.22	113.40

There are no chirality outliers.

5 of 11 planarity outliers are listed below:



Mol	Chain	Res	Type	Group
1	A	165	TYR	Sidechain
1	A	269	ARG	Sidechain
1	A	98	TYR	Sidechain
2	B	77	TYR	Sidechain
2	B	99	LEU	Peptide

## 5.2 Close contacts ⓘ

In the following table, the Non-H and H(model) columns list the number of non-hydrogen atoms and hydrogen atoms in the chain respectively. The H(added) column lists the number of hydrogens added by MolProbity. The Clashes column lists the number of clashes within the asymmetric unit, and the number in parentheses is this value normalized per 1000 atoms of the molecule in the chain. The Symm-Clashes column gives symmetry related clashes, in the same way as for the Clashes column.

Mol	Chain	Non-H	H(model)	H(added)	Clashes	Symm-Clashes
1	A	2409	0	2414	26	0
1	C	2409	0	2414	19	0
2	B	1138	0	1154	38	0
2	D	1138	0	1154	39	0
3	B	1	0	0	0	0
3	D	1	0	0	0	0
4	A	16	0	6	0	0
4	C	16	0	6	0	0
5	A	8	0	0	0	0
5	C	7	0	0	0	0
All	All	7143	0	7148	118	0

Clashscore is defined as the number of clashes calculated for the entry per 1000 atoms (including hydrogens) of the entry. The overall clashscore for this entry is 8.

The worst 5 of 118 close contacts within the same asymmetric unit are listed below.

Atom-1	Atom-2	Distance(Å)	Clash(Å)
2:B:22:PRO:HB2	2:B:25:ILE:HD12	1.60	0.84
2:D:102:ARG:NH2	2:D:124:SER:HB3	1.94	0.83
2:D:99:LEU:HD11	2:D:134:ILE:HD12	1.64	0.78
2:D:102:ARG:HH21	2:D:124:SER:HB3	1.47	0.78
2:D:22:PRO:HB2	2:D:25:ILE:HD12	1.70	0.72

There are no symmetry-related clashes.

## 5.3 Torsion angles

### 5.3.1 Protein backbone ⓘ

In the following table, the Percentiles column shows the percent Ramachandran outliers of the chain as a percentile score with respect to all X-ray entries followed by that with respect to entries of similar resolution. The Analysed column shows the number of residues for which the backbone conformation was analysed, and the total number of residues.

Mol	Chain	Analysed	Favoured	Allowed	Outliers	Percentiles	
1	A	308/310 (99%)	298 (97%)	7 (2%)	3 (1%)	22	60
1	C	308/310 (99%)	300 (97%)	7 (2%)	1 (0%)	50	84
2	B	144/153 (94%)	122 (85%)	16 (11%)	6 (4%)	4	13
2	D	144/153 (94%)	130 (90%)	12 (8%)	2 (1%)	16	49
All	All	904/926 (98%)	850 (94%)	42 (5%)	12 (1%)	18	51

5 of 12 Ramachandran outliers are listed below:

Mol	Chain	Res	Type
2	B	9	VAL
2	B	10	GLU
2	B	152	ALA
2	B	131	ALA
2	D	131	ALA

### 5.3.2 Protein sidechains ⓘ

In the following table, the Percentiles column shows the percent sidechain outliers of the chain as a percentile score with respect to all X-ray entries followed by that with respect to entries of similar resolution. The Analysed column shows the number of residues for which the sidechain conformation was analysed, and the total number of residues.

Mol	Chain	Analysed	Rotameric	Outliers	Percentiles	
1	A	260/260 (100%)	232 (89%)	28 (11%)	9	26
1	C	260/260 (100%)	245 (94%)	15 (6%)	28	63
2	B	129/136 (95%)	112 (87%)	17 (13%)	6	16
2	D	129/136 (95%)	112 (87%)	17 (13%)	6	16
All	All	778/792 (98%)	701 (90%)	77 (10%)	11	31

5 of 77 residues with a non-rotameric sidechain are listed below:

Mol	Chain	Res	Type
2	B	60	LYS
2	B	139	LYS
2	D	98	SER
2	B	69	ASP
2	B	86	ILE

Some sidechains can be flipped to improve hydrogen bonding and reduce clashes. 5 of 15 such sidechains are listed below:

Mol	Chain	Res	Type
2	B	63	ASN
2	B	70	GLN
1	C	256	ASN
1	A	305	ASN
1	C	60	GLN

### 5.3.3 RNA ⓘ

There are no RNA chains in this entry.

## 5.4 Non-standard residues in protein, DNA, RNA chains ⓘ

There are no non-standard protein/DNA/RNA residues in this entry.

## 5.5 Carbohydrates ⓘ

There are no carbohydrates in this entry.

## 5.6 Ligand geometry ⓘ

Of 4 ligands modelled in this entry, 2 are monoatomic - leaving 2 for Mogul analysis.

In the following table, the Counts columns list the number of bonds (or angles) for which Mogul statistics could be retrieved, the number of bonds (or angles) that are observed in the model and the number of bonds (or angles) that are defined in the chemical component dictionary. The Link column lists molecule types, if any, to which the group is linked. The Z score for a bond length (or angle) is the number of standard deviations the observed value is removed from the expected value. A bond length (or angle) with  $|Z| > 2$  is considered an outlier worth inspection. RMSZ is the root-mean-square of all Z scores of the bond lengths (or angles).

Mol	Type	Chain	Res	Link	Bond lengths			Bond angles		
					Counts	RMSZ	# Z  > 2	Counts	RMSZ	# Z  > 2
4	PAL	A	311	-	15,15,15	1.38	4 (26%)	21,21,21	1.21	2 (9%)
4	PAL	C	311	-	15,15,15	1.14	1 (6%)	21,21,21	1.69	3 (14%)

In the following table, the Chirals column lists the number of chiral outliers, the number of chiral centers analysed, the number of these observed in the model and the number defined in the chemical component dictionary. Similar counts are reported in the Torsion and Rings columns. '-' means no outliers of that kind were identified.

Mol	Type	Chain	Res	Link	Chirals	Torsions	Rings
4	PAL	A	311	-	-	0/17/17/17	0/0/0/0
4	PAL	C	311	-	-	0/17/17/17	0/0/0/0

All (5) bond length outliers are listed below:

Mol	Chain	Res	Type	Atoms	Z	Observed(Å)	Ideal(Å)
4	A	311	PAL	P-C1P	2.79	1.84	1.79
4	A	311	PAL	P-O1P	2.73	1.56	1.50
4	C	311	PAL	P-O1P	2.13	1.55	1.50
4	A	311	PAL	O3-C4	-2.08	1.22	1.30
4	A	311	PAL	O5-C5	-2.00	1.23	1.30

All (5) bond angle outliers are listed below:

Mol	Chain	Res	Type	Atoms	Z	Observed(°)	Ideal(°)
4	C	311	PAL	C4-C2-N2	5.45	124.59	110.53
4	C	311	PAL	C3-C2-N2	-3.20	104.05	110.61
4	C	311	PAL	P-C1P-C1	-2.53	109.36	113.58
4	A	311	PAL	C4-C2-N2	2.21	116.24	110.53
4	A	311	PAL	O3P-P-O1P	-2.16	106.80	112.56

There are no chirality outliers.

There are no torsion outliers.

There are no ring outliers.

## 5.7 Other polymers ⓘ

There are no such residues in this entry.

## 5.8 Polymer linkage issues

There are no chain breaks in this entry.

## 6 Fit of model and data ⓘ

### 6.1 Protein, DNA and RNA chains ⓘ

EDS was not executed - this section will therefore be empty.

### 6.2 Non-standard residues in protein, DNA, RNA chains ⓘ

EDS was not executed - this section will therefore be empty.

### 6.3 Carbohydrates ⓘ

EDS was not executed - this section will therefore be empty.

### 6.4 Ligands ⓘ

EDS was not executed - this section will therefore be empty.

### 6.5 Other polymers ⓘ

EDS was not executed - this section will therefore be empty.