



# Full wwPDB X-ray Structure Validation Report

Feb 26, 2014 – 05:46 PM GMT

PDB ID : 2AD8  
Title : crystal structure of methanol dehydrogenase from M. W3A1 (form C) in the presence of ethanol  
Authors : Li, J.; Gan, J.-H.; Xia, Z.-X.; Mathews, F.S.  
Deposited on : 2005-07-20  
Resolution : 1.60 Å(reported)

This is a full wwPDB validation report for a publicly released PDB entry.  
We welcome your comments at [validation@mail.wwpdb.org](mailto:validation@mail.wwpdb.org)  
A user guide is available at <http://wwpdb.org/ValidationPDFNotes.html>

---

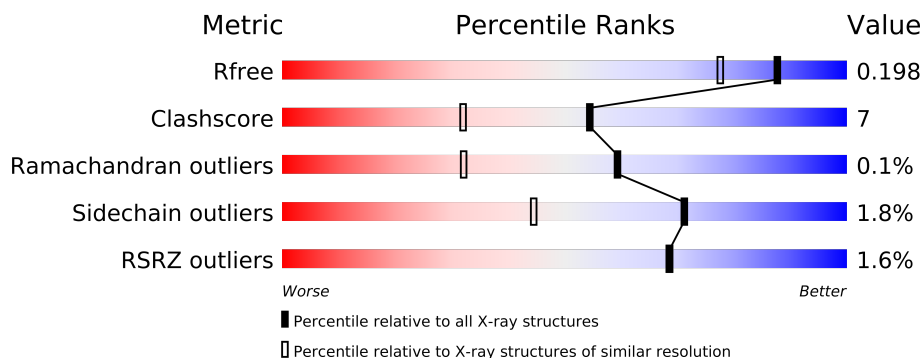
The following versions of software and data (see [references](#)) were used in the production of this report:

MolProbity : 4.02b-467  
Mogul : 1.15 2013  
Xtriage (Phenix) : dev-1323  
EDS : stable22639  
Percentile statistics : 21963  
Refmac : 5.8.0049  
CCP4 : 6.3.0 (Settle)  
Ideal geometry (proteins) : Engh & Huber (2001)  
Ideal geometry (DNA, RNA) : Parkinson et. al. (1996)  
Validation Pipeline (wwPDB-VP) : stable22683

# 1 Overall quality at a glance

The reported resolution of this entry is 1.60 Å.

Percentile scores (ranging between 0-100) for global validation metrics of the entry are shown in the following graphic. The table shows the number of entries on which the scores are based.



Metric	Whole archive (#Entries)	Similar resolution (#Entries, resolution range(Å))
$R_{free}$	66092	1872 (1.60-1.60)
Clashscore	79885	2199 (1.60-1.60)
Ramachandran outliers	78287	2126 (1.60-1.60)
Sidechain outliers	78261	2125 (1.60-1.60)
RSRZ outliers	66119	1872 (1.60-1.60)

The table below summarises the geometric issues observed across the polymeric chains and their fit to the electron density. The red, orange, yellow and green segments on the lower bar indicate the fraction of residues that contain outliers for  $\geq 3$ , 2, 1 and 0 types of geometric quality criteria. The upper red bar (where present) indicates the fraction of residues that have poor fit to the electron density.

Mol	Chain	Length	Quality of chain
1	A	571	
1	C	571	
2	B	69	
2	D	69	

## 2 Entry composition

There are 5 unique types of molecules in this entry. The entry contains 10880 atoms, of which 0 are hydrogen and 0 are deuterium.

In the tables below, the ZeroOcc column contains the number of atoms modelled with zero occupancy, the AltConf column contains the number of residues with at least one atom in alternate conformation and the Trace column contains the number of residues modelled with at most 2 atoms.

- Molecule 1 is a protein called Methanol dehydrogenase subunit 1.

Mol	Chain	Residues	Atoms					ZeroOcc	AltConf	Trace
1	A	571	Total	C	N	O	S	0	0	0
			4402	2809	752	815	26			
1	C	571	Total	C	N	O	S	0	0	0
			4402	2809	752	815	26			

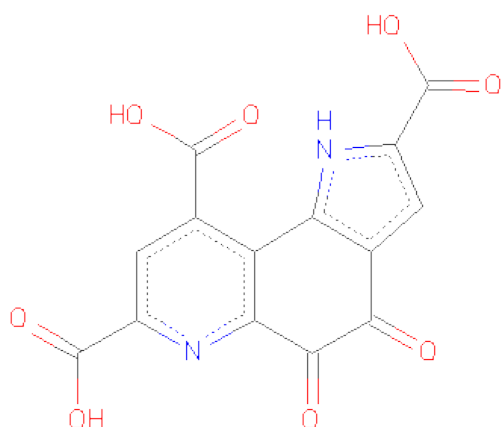
- Molecule 2 is a protein called Methanol dehydrogenase subunit 2.

Mol	Chain	Residues	Atoms					ZeroOcc	AltConf	Trace
2	B	69	Total	C	N	O	S	0	0	0
			545	337	97	108	3			
2	D	69	Total	C	N	O	S	0	0	0
			545	337	97	108	3			

- Molecule 3 is CALCIUM ION (three-letter code: CA) (formula: Ca).

Mol	Chain	Residues	Atoms		ZeroOcc	AltConf
3	A	1	Total	Ca	0	0
			1	1		
3	C	1	Total	Ca	0	0
			1	1		

- Molecule 4 is PYRROLOQUINOLINE QUINONE (three-letter code: PQQ) (formula: C<sub>14</sub>H<sub>6</sub>N<sub>2</sub>O<sub>8</sub>).



Mol	Chain	Residues	Atoms				ZeroOcc	AltConf
4	A	1	Total	C	N	O	0	0
			24	14	2	8		
4	C	1	Total	C	N	O	0	0
			24	14	2	8		

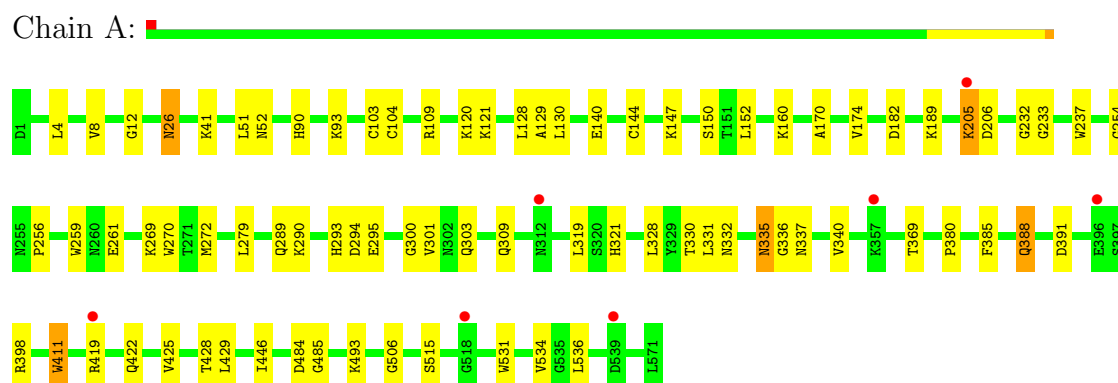
- Molecule 5 is water.

Mol	Chain	Residues	Atoms		ZeroOcc	AltConf
5	A	378	Total	O	0	0
			378	378		
5	B	52	Total	O	0	0
			52	52		
5	C	446	Total	O	0	0
			446	446		
5	D	60	Total	O	0	0
			60	60		

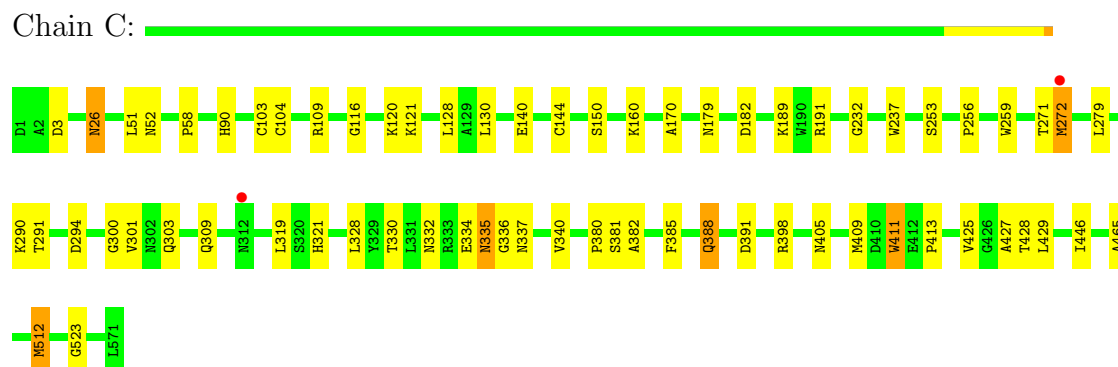
### 3 Residue-property plots

These plots are drawn for all protein, RNA and DNA chains in the entry. The first graphic for a chain summarises the proportions of errors displayed in the second graphic. The second graphic shows the sequence view annotated by issues in geometry and electron density. Residues are color-coded according to the number of geometric quality criteria for which they contain at least one outlier: green = 0, yellow = 1, orange = 2 and red = 3 or more. A red dot above a residue indicates a poor fit to the electron density ( $RSRZ > 2$ ). Stretches of 2 or more consecutive residues without any outlier are shown as a green connector. Residues present in the sample, but not in the model, are shown in grey.

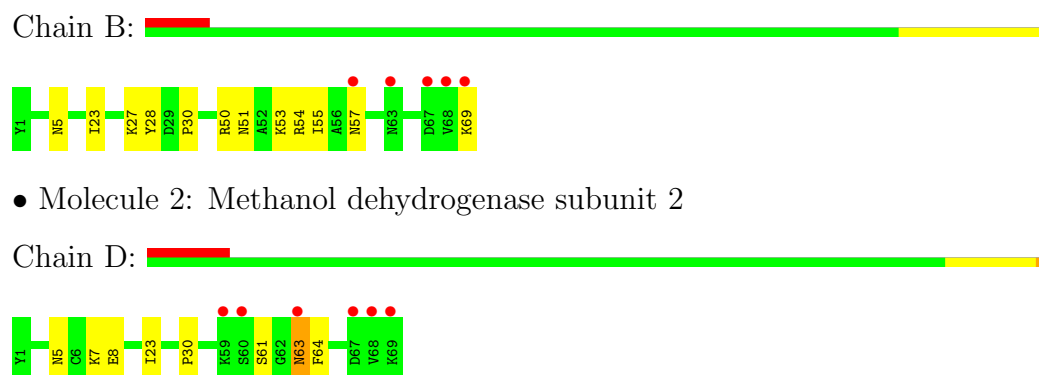
- Molecule 1: Methanol dehydrogenase subunit 1



- Molecule 1: Methanol dehydrogenase subunit 1



- Molecule 2: Methanol dehydrogenase subunit 2



- Molecule 2: Methanol dehydrogenase subunit 2

## 4 Data and refinement statistics

Property	Value	Source
Space group	C 1 2 1	Depositor
Cell constants a, b, c, $\alpha$ , $\beta$ , $\gamma$	204.21 Å   62.63 Å   124.51 Å 90.00°   125.14°   90.00°	Depositor
Resolution (Å)	42.99 – 1.60 42.98 – 1.60	Depositor EDS
% Data completeness (in resolution range)	90.9 (42.99-1.60) 91.1 (42.98-1.60)	Depositor EDS
$R_{merge}$	0.05	Depositor
$R_{sym}$	(Not available)	Depositor
$\langle I/\sigma(I) \rangle$ <sup>1</sup>	6.53 (at 1.60 Å)	Xtriage
Refinement program	CNS 1.1	Depositor
R, $R_{free}$	0.174 , 0.195 0.176 , 0.198	Depositor DCC
$R_{free}$ test set	15403 reflections (9.98%)	DCC
Wilson B-factor (Å <sup>2</sup> )	16.9	Xtriage
Anisotropy	0.262	Xtriage
Bulk solvent $k_{sol}$ (e/Å <sup>3</sup> ), $B_{sol}$ (Å <sup>2</sup> )	0.36 , 39.8	EDS
Estimated twinning fraction	0.010 for -h-2*1,-k,l	Xtriage
L-test for twinning	$\langle  L  \rangle = 0.49$ , $\langle L^2 \rangle = 0.33$	Xtriage
Outliers	1 of 157861 reflections (0.001%)	Xtriage
$F_o, F_c$ correlation	0.96	EDS
Total number of atoms	10880	wwPDB-VP
Average B, all atoms (Å <sup>2</sup> )	21.0	wwPDB-VP

Xtriage's analysis on translational NCS is as follows: *The largest off-origin peak in the Patterson function is 13.64% of the height of the origin peak. No significant pseudotranslation is detected.*

<sup>1</sup>Intensities estimated from amplitudes.

## 5 Model quality

### 5.1 Standard geometry

Bond lengths and bond angles in the following residue types are not validated in this section: PQQ, CA

The Z score for a bond length (or angle) is the number of standard deviations the observed value is removed from the expected value. A bond length (or angle) with  $|Z| > 5$  is considered an outlier worth inspection. RMSZ is the root-mean-square of all Z scores of the bond lengths (or angles).

Mol	Chain	Bond lengths		Bond angles	
		RMSZ	# $ Z  > 5$	RMSZ	# $ Z  > 5$
1	A	0.30	0/4529	0.64	1/6150 (0.0%)
1	C	0.32	0/4529	0.67	1/6150 (0.0%)
2	B	0.27	0/557	0.44	0/746
2	D	0.26	0/557	0.44	0/746
All	All	0.31	0/10172	0.63	2/13792 (0.0%)

There are no bond length outliers.

All (2) bond angle outliers are listed below:

Mol	Chain	Res	Type	Atoms	Z	Observed(°)	Ideal(°)
1	A	446	ILE	N-CA-C	-5.54	96.04	111.00
1	C	446	ILE	N-CA-C	-5.48	96.21	111.00

There are no chirality outliers.

There are no planarity outliers.

### 5.2 Close contacts

In the following table, the Non-H and H(model) columns list the number of non-hydrogen atoms and hydrogen atoms in the chain respectively. The H(added) column lists the number of hydrogens added by MolProbity. The Clashes column lists the number of clashes within the asymmetric unit, and the number in parentheses is this value normalized per 1000 atoms of the molecule in the chain. The Symm-Clashes column gives symmetry related clashes, in the same way as for the Clashes column.

Mol	Chain	Non-H	H(model)	H(added)	Clashes	Symm-Clashes
1	A	4402	0	4250	62	0
1	C	4402	0	4250	59	0
2	B	545	0	522	9	0

*Continued on next page...*

*Continued from previous page...*

Mol	Chain	Non-H	H(model)	H(added)	Clashes	Symm-Clashes
2	D	545	0	522	3	0
3	A	1	0	0	0	0
3	C	1	0	0	0	0
4	A	24	0	3	1	0
4	C	24	0	3	1	0
5	A	378	0	0	3	0
5	B	52	0	0	0	0
5	C	446	0	0	0	0
5	D	60	0	0	0	0
All	All	10880	0	9550	133	0

Clashscore is defined as the number of clashes calculated for the entry per 1000 atoms (including hydrogens) of the entry. The overall clashscore for this entry is 7.

All (133) close contacts within the same asymmetric unit are listed below.

Atom-1	Atom-2	Distance(Å)	Clash(Å)
1:C:272:MET:HE3	1:C:291:THR:HB	1.53	0.90
1:C:512:MET:HE3	1:C:523:GLY:HA3	1.58	0.86
1:C:303:GLN:HE22	1:C:391:ASP:H	1.24	0.85
1:C:272:MET:CE	1:C:294:ASP:HB2	2.07	0.83
1:A:419:ARG:HE	1:A:422:GLN:HG3	1.43	0.81
1:C:381:SER:HB2	1:C:409:MET:HE3	1.63	0.80
1:A:303:GLN:HE22	1:A:391:ASP:H	1.26	0.80
1:C:309:GLN:HE21	1:C:398:ARG:HH11	1.33	0.77
1:C:382:ALA:H	1:C:409:MET:CE	1.99	0.76
1:A:205:LYS:HD2	1:A:206:ASP:N	2.01	0.75
1:C:272:MET:CE	1:C:291:THR:HB	2.17	0.73
1:A:419:ARG:NE	1:A:422:GLN:HG3	2.04	0.71
1:C:512:MET:CE	1:C:523:GLY:HA3	2.21	0.70
1:A:290:LYS:NZ	1:A:321:HIS:HE1	1.91	0.68
1:C:272:MET:HE1	1:C:294:ASP:HB2	1.75	0.67
1:C:303:GLN:NE2	1:C:391:ASP:H	1.92	0.67
1:A:303:GLN:NE2	1:A:391:ASP:H	1.91	0.67
1:C:90:HIS:HD2	1:C:120:LYS:NZ	1.93	0.66
1:C:409:MET:CE	1:C:429:LEU:HD23	2.26	0.66
1:C:290:LYS:NZ	1:C:321:HIS:HE1	1.96	0.64
1:C:309:GLN:NE2	1:C:398:ARG:HH11	1.95	0.63
1:A:147:LYS:HD3	5:A:1861:HOH:O	1.98	0.63
1:A:261:GLU:OE1	1:A:293:HIS:HE1	1.81	0.63
1:A:90:HIS:HD2	1:A:120:LYS:NZ	1.97	0.63
1:A:41:LYS:HE2	5:A:1460:HOH:O	2.00	0.62
1:C:272:MET:HE2	1:C:294:ASP:HB2	1.83	0.60

*Continued on next page...*



*Continued from previous page...*

Atom-1	Atom-2	Distance(Å)	Clash(Å)
1:A:290:LYS:HZ3	1:A:321:HIS:CE1	2.19	0.60
2:D:23:ILE:HD12	2:D:30:PRO:HD3	1.82	0.60
1:A:290:LYS:HZ3	1:A:321:HIS:HE1	1.48	0.59
1:C:179:ASN:ND2	1:C:191:ARG:HE	2.00	0.58
1:A:319:LEU:HD23	1:A:319:LEU:C	2.23	0.58
1:C:90:HIS:HD2	1:C:120:LYS:HZ3	1.52	0.58
1:C:309:GLN:HE21	1:C:398:ARG:NH1	2.01	0.58
1:C:290:LYS:HZ3	1:C:321:HIS:CE1	2.20	0.57
1:C:109:ARG:HE	1:C:388:GLN:HE21	1.50	0.57
1:C:290:LYS:HZ3	1:C:321:HIS:HE1	1.51	0.57
1:C:128:LEU:HG	1:C:140:GLU:HG3	1.87	0.57
1:A:290:LYS:HZ1	1:A:300:GLY:HA3	1.70	0.57
1:C:409:MET:HE1	1:C:429:LEU:HD23	1.86	0.56
1:A:26:ASN:C	1:A:26:ASN:HD22	2.08	0.56
1:C:58:PRO:HG2	1:C:512:MET:HE1	1.88	0.56
1:A:130:LEU:HD12	1:A:130:LEU:N	2.21	0.55
1:A:309:GLN:HE21	1:A:398:ARG:HE	1.56	0.54
1:A:128:LEU:HG	1:A:140:GLU:HG3	1.89	0.54
1:C:51:LEU:O	1:C:52:ASN:HB2	2.07	0.54
2:B:23:ILE:HD12	2:B:30:PRO:HD3	1.89	0.53
1:A:493:LYS:HB3	1:A:493:LYS:NZ	2.24	0.53
1:C:144:CYS:HB3	1:C:150:SER:OG	2.08	0.53
1:C:382:ALA:H	1:C:409:MET:HE1	1.74	0.53
1:C:130:LEU:N	1:C:130:LEU:HD12	2.24	0.52
1:A:380:PRO:HB3	1:A:385:PHE:CD1	2.45	0.52
1:C:382:ALA:H	1:C:409:MET:HE3	1.72	0.52
2:B:27:LYS:HE3	2:B:28:TYR:CZ	2.45	0.52
1:C:170:ALA:HB3	4:C:703:PQQ:O7A	2.10	0.51
1:A:328:LEU:C	1:A:328:LEU:HD23	2.31	0.51
1:A:182:ASP:HA	1:A:189:LYS:HE3	1.92	0.51
1:C:26:ASN:C	1:C:26:ASN:HD22	2.13	0.51
1:A:536:LEU:C	1:A:536:LEU:HD23	2.31	0.51
1:C:232:GLY:O	1:C:256:PRO:HA	2.11	0.51
1:A:335:ASN:HD22	1:A:336:GLY:N	2.09	0.50
2:B:53:LYS:NZ	2:B:69:LYS:HA	2.26	0.50
1:C:409:MET:HE2	1:C:429:LEU:HD23	1.93	0.50
1:A:170:ALA:HB3	4:A:701:PQQ:O7A	2.11	0.50
1:A:237:TRP:CE2	1:A:301:VAL:HG21	2.47	0.49
1:C:271:THR:O	1:C:272:MET:HG2	2.12	0.49
1:A:419:ARG:HH11	1:A:422:GLN:HG3	1.77	0.49
1:A:335:ASN:ND2	1:A:337:ASN:H	2.10	0.49
1:A:232:GLY:O	1:A:256:PRO:HA	2.12	0.49

*Continued on next page...*

*Continued from previous page...*

Atom-1	Atom-2	Distance(Å)	Clash(Å)
1:C:405:ASN:ND2	1:C:465:ALA:HB1	2.28	0.49
1:A:144:CYS:HB3	1:A:150:SER:OG	2.13	0.49
1:A:51:LEU:O	1:A:52:ASN:HB2	2.12	0.49
1:A:419:ARG:NH1	1:A:422:GLN:HG3	2.28	0.48
2:B:53:LYS:NZ	2:B:69:LYS:HG3	2.29	0.48
2:D:63:ASN:HD22	2:D:64:PHE:N	2.11	0.47
1:A:303:GLN:HE22	1:A:391:ASP:N	2.05	0.47
1:C:160:LYS:HE2	1:C:279:LEU:HD23	1.97	0.47
1:A:330:THR:HB	1:A:340:VAL:HB	1.97	0.47
1:A:128:LEU:HD12	1:A:128:LEU:N	2.30	0.47
1:A:419:ARG:CZ	1:A:422:GLN:HG3	2.45	0.46
1:C:182:ASP:HB2	1:C:189:LYS:HE3	1.97	0.46
1:C:380:PRO:HB3	1:C:385:PHE:CD1	2.51	0.46
1:A:103:CYS:SG	1:A:104:CYS:N	2.89	0.45
1:A:485:GLY:HA2	1:A:506:GLY:HA2	1.97	0.45
1:A:109:ARG:HE	1:A:388:GLN:HE21	1.65	0.45
1:A:330:THR:C	1:A:331:LEU:HD12	2.37	0.45
2:D:7:LYS:HG3	2:D:8:GLU:HG3	1.98	0.45
1:A:12:GLY:HA3	1:A:515:SER:OG	2.17	0.45
1:C:332:ASN:OD1	1:C:334:GLU:HB2	2.16	0.45
1:C:3:ASP:OD1	1:C:116:GLY:N	2.50	0.45
1:A:174:VAL:O	1:A:233:GLY:HA2	2.16	0.45
1:A:531:TRP:O	1:A:534:VAL:HG22	2.17	0.45
1:A:4:LEU:O	1:A:8:VAL:HG23	2.17	0.45
2:B:53:LYS:HZ1	2:B:69:LYS:HG3	1.80	0.44
1:C:335:ASN:ND2	1:C:337:ASN:H	2.15	0.44
1:C:335:ASN:HD22	1:C:335:ASN:C	2.20	0.44
1:A:332:ASN:HB3	1:A:335:ASN:ND2	2.32	0.44
1:A:428:THR:C	1:A:429:LEU:HD12	2.38	0.44
1:A:335:ASN:HD22	1:A:335:ASN:C	2.21	0.44
1:C:330:THR:HB	1:C:340:VAL:HB	2.00	0.44
1:C:428:THR:C	1:C:429:LEU:HD12	2.38	0.44
1:C:253:SER:O	1:C:272:MET:HA	2.18	0.44
1:C:411:TRP:C	1:C:411:TRP:CD1	2.91	0.44
1:C:271:THR:C	1:C:272:MET:HG2	2.38	0.43
1:C:290:LYS:HZ1	1:C:300:GLY:HA3	1.82	0.43
2:B:53:LYS:CE	2:B:69:LYS:HA	2.47	0.43
1:A:332:ASN:HB3	1:A:335:ASN:HD21	1.83	0.43
1:A:160:LYS:HE2	1:A:279:LEU:HD23	2.00	0.43
1:A:303:GLN:O	1:A:321:HIS:HD2	2.01	0.43
1:A:129:ALA:C	1:A:130:LEU:HD12	2.38	0.43
1:C:58:PRO:HG2	1:C:512:MET:CE	2.49	0.43

*Continued on next page...*

Continued from previous page...

Atom-1	Atom-2	Distance(Å)	Clash(Å)
1:A:90:HIS:HD2	1:A:120:LYS:HZ3	1.65	0.43
1:C:319:LEU:C	1:C:319:LEU:HD23	2.38	0.42
1:A:144:CYS:SG	1:A:152:LEU:HG	2.60	0.42
2:B:50:ARG:O	2:B:54:ARG:HG3	2.20	0.42
1:C:303:GLN:O	1:C:321:HIS:HD2	2.03	0.42
1:A:272:MET:HE2	1:A:294:ASP:HB2	2.01	0.42
1:C:303:GLN:HE22	1:C:391:ASP:N	2.04	0.42
1:C:259:TRP:CD2	1:C:425:VAL:HG13	2.54	0.42
1:C:103:CYS:SG	1:C:104:CYS:N	2.92	0.42
2:B:53:LYS:O	2:B:57:ASN:ND2	2.53	0.41
1:C:328:LEU:C	1:C:328:LEU:HD23	2.41	0.41
1:A:295:GLU:HB3	1:A:369:THR:OG1	2.20	0.41
1:C:237:TRP:CE2	1:C:301:VAL:HG21	2.55	0.41
1:A:269:LYS:HA	1:A:270:TRP:HA	1.77	0.41
1:A:269:LYS:NZ	1:A:289:GLN:NE2	2.69	0.41
1:A:290:LYS:HZ1	1:A:300:GLY:CA	2.33	0.41
1:A:90:HIS:HD2	1:A:120:LYS:HZ2	1.69	0.41
1:C:413:PRO:HA	1:C:427:ALA:HA	2.03	0.41
1:C:335:ASN:HD22	1:C:336:GLY:N	2.18	0.41
1:A:411:TRP:C	1:A:411:TRP:CD1	2.94	0.41
2:B:51:ASN:O	2:B:55:ILE:HG12	2.20	0.40
1:A:254:GLY:HA3	5:A:1100:HOH:O	2.21	0.40
1:A:259:TRP:CD2	1:A:425:VAL:HG13	2.56	0.40

There are no symmetry-related clashes.

## 5.3 Torsion angles

### 5.3.1 Protein backbone ⓘ

In the following table, the Percentiles column shows the percent Ramachandran outliers of the chain as a percentile score with respect to all X-ray entries followed by that with respect to entries of similar resolution. The Analysed column shows the number of residues for which the backbone conformation was analysed, and the total number of residues.

Mol	Chain	Analysed	Favoured	Allowed	Outliers	Percentiles	
1	A	569/571 (100%)	536 (94%)	33 (6%)	0	100	100
1	C	569/571 (100%)	541 (95%)	28 (5%)	0	100	100
2	B	67/69 (97%)	66 (98%)	1 (2%)	0	100	100
2	D	67/69 (97%)	64 (96%)	2 (3%)	1 (2%)	15	2

Continued on next page...

*Continued from previous page...*

Mol	Chain	Analysed	Favoured	Allowed	Outliers	Percentiles
All	All	1272/1280 (99%)	1207 (95%)	64 (5%)	1 (0%)	59 32

All (1) Ramachandran outliers are listed below:

Mol	Chain	Res	Type
2	D	61	SER

### 5.3.2 Protein sidechains ⓘ

In the following table, the Percentiles column shows the percent sidechain outliers of the chain as a percentile score with respect to all X-ray entries followed by that with respect to entries of similar resolution. The Analysed column shows the number of residues for which the sidechain conformation was analysed, and the total number of residues.

Mol	Chain	Analysed	Rotameric	Outliers	Percentiles
1	A	452/452 (100%)	444 (98%)	8 (2%)	71 44
1	C	452/452 (100%)	445 (98%)	7 (2%)	76 53
2	B	58/58 (100%)	57 (98%)	1 (2%)	73 47
2	D	58/58 (100%)	56 (97%)	2 (3%)	49 19
All	All	1020/1020 (100%)	1002 (98%)	18 (2%)	71 44

All (18) residues with a non-rotameric sidechain are listed below:

Mol	Chain	Res	Type
1	A	26	ASN
1	A	93	LYS
1	A	121	LYS
1	A	205	LYS
1	A	335	ASN
1	A	388	GLN
1	A	411	TRP
1	A	484	ASP
2	B	5	ASN
1	C	26	ASN
1	C	121	LYS
1	C	272	MET
1	C	335	ASN
1	C	388	GLN
1	C	411	TRP

*Continued on next page...*

*Continued from previous page...*

Mol	Chain	Res	Type
1	C	512	MET
2	D	5	ASN
2	D	63	ASN

Some sidechains can be flipped to improve hydrogen bonding and reduce clashes. All (35) such sidechains are listed below:

Mol	Chain	Res	Type
1	A	26	ASN
1	A	90	HIS
1	A	268	ASN
1	A	289	GLN
1	A	293	HIS
1	A	302	ASN
1	A	303	GLN
1	A	309	GLN
1	A	321	HIS
1	A	335	ASN
1	A	388	GLN
1	A	405	ASN
1	A	558	ASN
2	B	5	ASN
2	B	57	ASN
1	C	26	ASN
1	C	74	ASN
1	C	81	ASN
1	C	90	HIS
1	C	179	ASN
1	C	268	ASN
1	C	289	GLN
1	C	302	ASN
1	C	303	GLN
1	C	309	GLN
1	C	321	HIS
1	C	335	ASN
1	C	388	GLN
1	C	405	ASN
1	C	436	ASN
1	C	558	ASN
2	D	4	GLN
2	D	5	ASN
2	D	38	ASN
2	D	63	ASN

### 5.3.3 RNA ⓘ

There are no RNA chains in this entry.

## 5.4 Non-standard residues in protein, DNA, RNA chains ⓘ

There are no non-standard protein/DNA/RNA residues in this entry.

## 5.5 Carbohydrates ⓘ

There are no carbohydrates in this entry.

## 5.6 Ligand geometry ⓘ

Of 4 ligands modelled in this entry, 2 are monoatomic - leaving 2 for Mogul analysis.

In the following table, the Counts columns list the number of bonds (or angles) for which Mogul statistics could be retrieved, the number of bonds (or angles) that are observed in the model and the number of bonds (or angles) that are defined in the chemical component dictionary. The Link column lists molecule types, if any, to which the group is linked. The Z score for a bond length (or angle) is the number of standard deviations the observed value is removed from the expected value. A bond length (or angle) with  $|Z| > 2$  is considered an outlier worth inspection. RMSZ is the root-mean-square of all Z scores of the bond lengths (or angles).

Mol	Type	Chain	Res	Link	Bond lengths			Bond angles		
					Counts	RMSZ	$\# Z  > 2$	Counts	RMSZ	$\# Z  > 2$
4	PQQ	A	701	3	26,26,26	1.51	5 (19%)	39,40,40	2.87	13 (33%)
4	PQQ	C	703	3	26,26,26	1.44	5 (19%)	39,40,40	2.88	13 (33%)

In the following table, the Chirals column lists the number of chiral outliers, the number of chiral centers analysed, the number of these observed in the model and the number defined in the chemical component dictionary. Similar counts are reported in the Torsion and Rings columns. '-' means no outliers of that kind were identified.

Mol	Type	Chain	Res	Link	Chirals	Torsions	Rings
4	PQQ	A	701	3	-	0/10/28/28	0/0/3/3
4	PQQ	C	703	3	-	0/10/28/28	0/0/3/3

All (10) bond length outliers are listed below:

Mol	Chain	Res	Type	Atoms	Z	Observed(Å)	Ideal(Å)
4	A	701	PQQ	C9A-C6A	3.08	1.43	1.40

*Continued on next page...*

*Continued from previous page...*

Mol	Chain	Res	Type	Atoms	Z	Observed(Å)	Ideal(Å)
4	A	701	PQQ	C6A-C5	2.96	1.53	1.49
4	C	703	PQQ	C9A-C6A	2.80	1.43	1.40
4	A	701	PQQ	C9-C9A	2.58	1.43	1.40
4	C	703	PQQ	C6A-C5	2.55	1.52	1.49
4	C	703	PQQ	C9-C9A	2.47	1.43	1.40
4	C	703	PQQ	C1A-N1	-2.42	1.34	1.36
4	A	701	PQQ	C1A-N1	-2.25	1.34	1.36
4	A	701	PQQ	C8-C9	2.22	1.43	1.39
4	C	703	PQQ	C8-C9	2.01	1.43	1.39

All (26) bond angle outliers are listed below:

Mol	Chain	Res	Type	Atoms	Z	Observed(°)	Ideal(°)
4	C	703	PQQ	C2X-C2-N1	10.44	124.90	116.85
4	A	701	PQQ	C2X-C2-N1	10.30	124.80	116.85
4	A	701	PQQ	C9-C9A-C1A	6.90	128.78	122.52
4	C	703	PQQ	C9-C9A-C1A	6.83	128.72	122.52
4	C	703	PQQ	C3A-C1A-C9A	6.72	125.19	121.70
4	A	701	PQQ	C3A-C1A-C9A	6.57	125.11	121.70
4	A	701	PQQ	C1A-C9A-C6A	-6.12	114.27	119.78
4	C	703	PQQ	C1A-C9A-C6A	-6.06	114.32	119.78
4	C	703	PQQ	C5-C6A-N6	-2.95	111.57	116.23
4	A	701	PQQ	O4-C4-C3A	2.94	126.71	121.58
4	C	703	PQQ	C3A-C4-C5	-2.93	114.46	118.08
4	C	703	PQQ	O4-C4-C3A	2.91	126.66	121.58
4	A	701	PQQ	C3A-C4-C5	-2.91	114.48	118.08
4	C	703	PQQ	C8-C9-C9A	-2.85	116.87	120.72
4	A	701	PQQ	C8-C9-C9A	-2.84	116.87	120.72
4	A	701	PQQ	C5-C6A-N6	-2.82	111.77	116.23
4	A	701	PQQ	C3A-C3-C2	-2.79	106.21	109.86
4	C	703	PQQ	C3A-C3-C2	-2.78	106.23	109.86
4	A	701	PQQ	C3-C3A-C4	-2.73	129.08	132.29
4	C	703	PQQ	C3-C3A-C4	-2.58	129.25	132.29
4	C	703	PQQ	C9A-C6A-C5	2.50	123.32	121.02
4	A	701	PQQ	C9A-C6A-C5	2.35	123.18	121.02
4	C	703	PQQ	O7A-C7X-C7	-2.17	116.43	121.09
4	A	701	PQQ	O9A-C9X-C9	-2.17	116.38	121.82
4	C	703	PQQ	O9A-C9X-C9	-2.11	116.51	121.82
4	A	701	PQQ	O7A-C7X-C7	-2.05	116.67	121.09

There are no chirality outliers.

There are no torsion outliers.

There are no ring outliers.

## 5.7 Other polymers ⓘ

There are no such residues in this entry.

## 5.8 Polymer linkage issues

There are no chain breaks in this entry.



## 6 Fit of model and data ⓘ

### 6.1 Protein, DNA and RNA chains ⓘ

In the following table, the column labelled ‘#RSRZ> 2’ contains the number (and percentage) of RSRZ outliers, followed by percent RSRZ outliers for the chain as percentile scores relative to all X-ray entries and entries of similar resolution. The OWAB column contains the minimum, median, 95<sup>th</sup> percentile and maximum values of the occupancy-weighted average B-factor per residue. The column labelled ‘Q< 0.9’ lists the number of (and percentage) of residues with an average occupancy less than 0.9.

Mol	Chain	Analysed	<RSRZ>	#RSRZ>2	OWAB(Å <sup>2</sup> )	Q<0.9
1	A	571/571 (100%)	0.02	7 (1%) 75 76	11, 19, 30, 46	0
1	C	571/571 (100%)	-0.13	2 (0%) 90 91	9, 16, 27, 41	0
2	B	69/69 (100%)	0.91	5 (7%) 15 14	21, 31, 49, 69	0
2	D	69/69 (100%)	0.65	6 (8%) 10 9	17, 27, 53, 69	0
All	All	1280/1280 (100%)	0.03	20 (1%) 68 68	9, 19, 33, 69	0

All (20) RSRZ outliers are listed below:

Mol	Chain	Res	Type	RSRZ
2	D	69	LYS	9.2
2	B	68	VAL	8.4
2	B	69	LYS	8.3
2	D	68	VAL	8.2
2	D	67	ASP	3.9
2	B	63	ASN	3.7
2	D	63	ASN	3.6
1	A	312	ASN	3.5
1	C	312	ASN	3.3
2	B	67	ASP	3.0
1	A	419	ARG	3.0
1	C	272	MET	2.9
1	A	205	LYS	2.7
2	D	59	LYS	2.6
1	A	357	LYS	2.4
1	A	539	ASP	2.3
2	B	57	ASN	2.2
1	A	396	GLU	2.2
2	D	60	SER	2.1
1	A	518	GLY	2.0

## 6.2 Non-standard residues in protein, DNA, RNA chains

There are no non-standard protein/DNA/RNA residues in this entry.

## 6.3 Carbohydrates

There are no carbohydrates in this entry.

## 6.4 Ligands

In the following table, the Atoms column lists the number of modelled atoms in the group and the number defined in the chemical component dictionary. LLDF column lists the quality of electron density of the group with respect to its neighbouring residues in protein, DNA or RNA chains. The B-factors column lists the minimum, median, 95<sup>th</sup> percentile and maximum values of B factors of atoms in the group. The column labelled 'Q< 0.9' lists the number of atoms with occupancy less than 0.9.

Mol	Type	Chain	Res	Atoms	RSR	LLDF	B-factors( $\text{\AA}^2$ )	Q<0.9
3	CA	A	702	1/1	0.13	1.12	36,36,36,36	0
4	PQQ	C	703	24/24	0.08	-0.86	10,13,14,15	0
3	CA	C	704	1/1	0.08	-0.94	30,30,30,30	0
4	PQQ	A	701	24/24	0.08	-1.06	13,15,17,18	0

## 6.5 Other polymers

There are no such residues in this entry.