



Full wwPDB X-ray Structure Validation Report

Feb 27, 2014 – 02:02 PM GMT

PDB ID : 3ADU
Title : Human PPARgamma ligand-binding domain in complex with 5-methoxy-indole acetate
Authors : Waku, T.; Shiraki, T.; Oyama, T.; Morikawa, K.
Deposited on : 2010-01-29
Resolution : 2.77 Å(reported)

This is a full wwPDB validation report for a publicly released PDB entry.
We welcome your comments at validation@mail.wwpdb.org
A user guide is available at <http://wwpdb.org/ValidationPDFNotes.html>

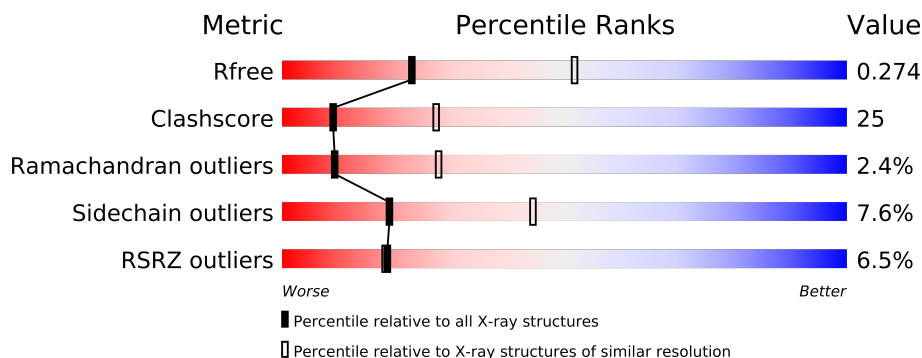
The following versions of software and data (see [references](#)) were used in the production of this report:

MolProbity : 4.02b-467
Mogul : 1.15 2013
Xtriage (Phenix) : dev-1323
EDS : stable22639
Percentile statistics : 21963
Refmac : 5.8.0049
CCP4 : 6.3.0 (Settle)
Ideal geometry (proteins) : Engh & Huber (2001)
Ideal geometry (DNA, RNA) : Parkinson et. al. (1996)
Validation Pipeline (wwPDB-VP) : stable22683

1 Overall quality at a glance

The reported resolution of this entry is 2.77 Å.

Percentile scores (ranging between 0-100) for global validation metrics of the entry are shown in the following graphic. The table shows the number of entries on which the scores are based.



Metric	Whole archive (#Entries)	Similar resolution (#Entries, resolution range(Å))
R_{free}	66092	2193 (2.80-2.76)
Clashscore	79885	2751 (2.80-2.76)
Ramachandran outliers	78287	2699 (2.80-2.76)
Sidechain outliers	78261	2701 (2.80-2.76)
RSRZ outliers	66119	2196 (2.80-2.76)

The table below summarises the geometric issues observed across the polymeric chains and their fit to the electron density. The red, orange, yellow and green segments on the lower bar indicate the fraction of residues that contain outliers for ≥ 3 , 2, 1 and 0 types of geometric quality criteria. The upper red bar (where present) indicates the fraction of residues that have poor fit to the electron density.

Mol	Chain	Length	Quality of chain
1	A	287	
1	B	287	

The following table lists non-polymeric compounds that are outliers for geometric or electron-density-fit criteria:

Mol	Type	Chain	Res	Geometry	Electron density
2	MYI	A	1	-	X
2	MYI	B	3	-	X
2	MYI	B	5	-	X

2 Entry composition

There are 3 unique types of molecules in this entry. The entry contains 4329 atoms, of which 0 are hydrogen and 0 are deuterium.

In the tables below, the ZeroOcc column contains the number of atoms modelled with zero occupancy, the AltConf column contains the number of residues with at least one atom in alternate conformation and the Trace column contains the number of residues modelled with at most 2 atoms.

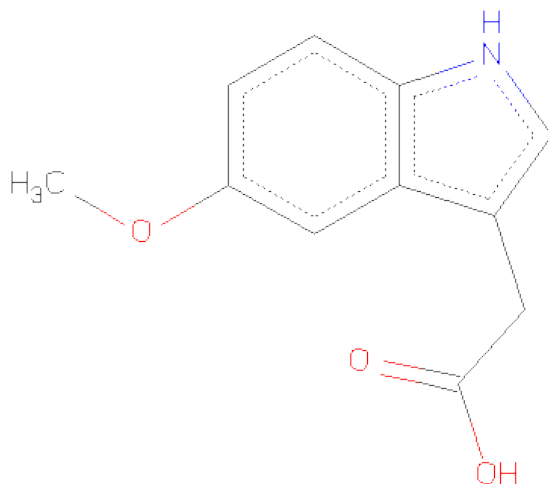
- Molecule 1 is a protein called Peroxisome proliferator-activatedreceptor gamma.

Mol	Chain	Residues	Atoms					ZeroOcc	AltConf	Trace
1	A	259	Total	C	N	O	S	0	0	0
			2057	1325	335	387	10			
1	B	261	Total	C	N	O	S	0	0	0
			2093	1354	343	387	9			

There are 8 discrepancies between the modelled and reference sequences:

Chain	Residue	Modelled	Actual	Comment	Reference
A	191	GLY	-	EXPRESSION TAG	UNP P37231
A	192	SER	-	EXPRESSION TAG	UNP P37231
A	193	HIS	-	EXPRESSION TAG	UNP P37231
A	194	MET	-	EXPRESSION TAG	UNP P37231
B	191	GLY	-	EXPRESSION TAG	UNP P37231
B	192	SER	-	EXPRESSION TAG	UNP P37231
B	193	HIS	-	EXPRESSION TAG	UNP P37231
B	194	MET	-	EXPRESSION TAG	UNP P37231

- Molecule 2 is (5-METHOXY-1H-INDOL-3-YL)ACETICACID (three-letter code: MYI) (formula: C₁₁H₁₁NO₃).



Mol	Chain	Residues	Atoms				ZeroOcc	AltConf
2	A	1	Total	C	N	O	0	0
			15	11	1	3		
2	A	1	Total	C	N	O	0	0
			15	11	1	3		
2	B	1	Total	C	N	O	0	0
			15	11	1	3		
2	B	1	Total	C	N	O	0	0
			15	11	1	3		
2	B	1	Total	C	N	O	0	0
			15	11	1	3		

- Molecule 3 is water.

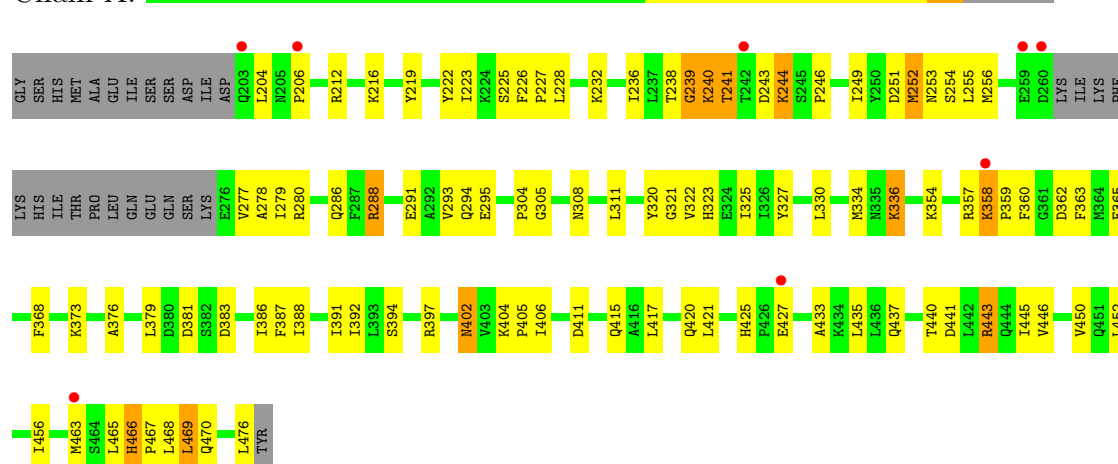
Mol	Chain	Residues	Atoms		ZeroOcc	AltConf
3	A	64	Total	O	0	0
			64	64		
3	B	40	Total	O	0	0
			40	40		

3 Residue-property plots

These plots are drawn for all protein, RNA and DNA chains in the entry. The first graphic for a chain summarises the proportions of errors displayed in the second graphic. The second graphic shows the sequence view annotated by issues in geometry and electron density. Residues are color-coded according to the number of geometric quality criteria for which they contain at least one outlier: green = 0, yellow = 1, orange = 2 and red = 3 or more. A red dot above a residue indicates a poor fit to the electron density ($RSRZ > 2$). Stretches of 2 or more consecutive residues without any outlier are shown as a green connector. Residues present in the sample, but not in the model, are shown in grey.

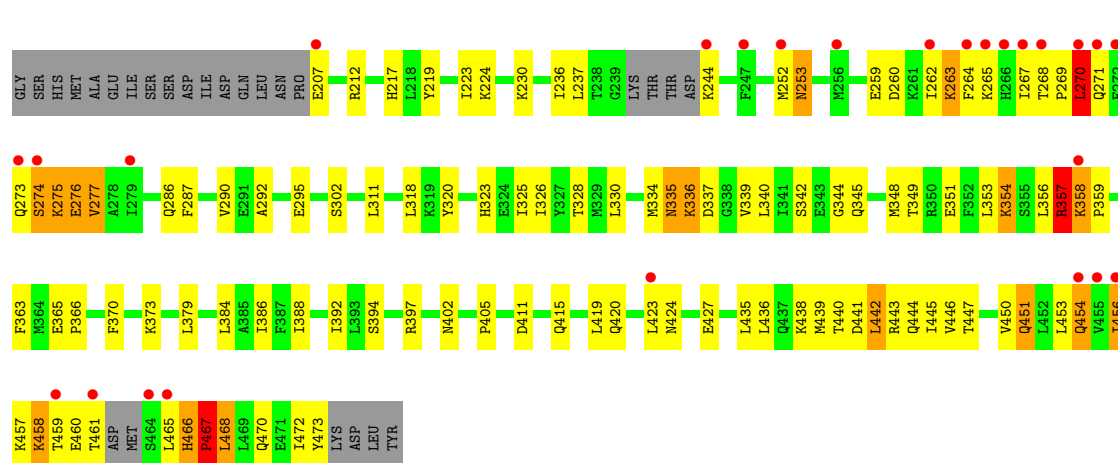
- Molecule 1: Peroxisome proliferator-activated receptor gamma

Chain A:



- Molecule 1: Peroxisome proliferator-activated receptor gamma

Chain B:



4 Data and refinement statistics

Property	Value	Source
Space group	C 1 2 1	Depositor
Cell constants a, b, c, α , β , γ	92.95Å 60.60Å 118.19Å 90.00° 104.03° 90.00°	Depositor
Resolution (Å)	43.90 – 2.77 43.93 – 2.77	Depositor EDS
% Data completeness (in resolution range)	92.2 (43.90-2.77) 94.4 (43.93-2.77)	Depositor EDS
R_{merge}	0.05	Depositor
R_{sym}	(Not available)	Depositor
$\langle I/\sigma(I) \rangle$ ¹	4.58 (at 2.77Å)	Xtriage
Refinement program	CNS 1.2	Depositor
R, R_{free}	0.204 , 0.276 0.203 , 0.274	Depositor DCC
R_{free} test set	756 reflections (4.88%)	DCC
Wilson B-factor (Å ²)	46.8	Xtriage
Anisotropy	0.826	Xtriage
Bulk solvent k_{sol} (e/Å ³), B_{sol} (Å ²)	0.38 , 54.6	EDS
Estimated twinning fraction	No twinning to report.	Xtriage
L-test for twinning	$\langle L \rangle = 0.48$, $\langle L^2 \rangle = 0.31$	Xtriage
Outliers	1 of 15752 reflections (0.006%)	Xtriage
F_o, F_c correlation	0.94	EDS
Total number of atoms	4329	wwPDB-VP
Average B, all atoms (Å ²)	52.0	wwPDB-VP

Xtriage's analysis on translational NCS is as follows: *The largest off-origin peak in the Patterson function is 6.83% of the height of the origin peak. No significant pseudotranslation is detected.*

¹Intensities estimated from amplitudes.

5 Model quality i

5.1 Standard geometry i

Bond lengths and bond angles in the following residue types are not validated in this section: MYI

The Z score for a bond length (or angle) is the number of standard deviations the observed value is removed from the expected value. A bond length (or angle) with $|Z| > 5$ is considered an outlier worth inspection. RMSZ is the root-mean-square of all Z scores of the bond lengths (or angles).

Mol	Chain	Bond lengths		Bond angles	
		RMSZ	$\# Z > 5$	RMSZ	$\# Z > 5$
1	A	0.39	0/2090	0.63	1/2818 (0.0%)
1	B	0.36	0/2128	0.59	0/2865
All	All	0.38	0/4218	0.61	1/5683 (0.0%)

There are no bond length outliers.

All (1) bond angle outliers are listed below:

Mol	Chain	Res	Type	Atoms	Z	Observed(°)	Ideal(°)
1	A	206	PRO	N-CA-CB	5.83	110.30	103.30

There are no chirality outliers.

There are no planarity outliers.

5.2 Close contacts i

In the following table, the Non-H and H(model) columns list the number of non-hydrogen atoms and hydrogen atoms in the chain respectively. The H(added) column lists the number of hydrogens added by MolProbity. The Clashes column lists the number of clashes within the asymmetric unit, and the number in parentheses is this value normalized per 1000 atoms of the molecule in the chain. The Symm-Clashes column gives symmetry related clashes, in the same way as for the Clashes column.

Mol	Chain	Non-H	H(model)	H(added)	Clashes	Symm-Clashes
1	A	2057	0	2096	86	0
1	B	2093	0	2158	131	0
2	A	30	0	20	1	0
2	B	45	0	30	8	0
3	A	64	0	0	6	0
3	B	40	0	0	1	0

Continued on next page...

Continued from previous page...

Mol	Chain	Non-H	H(model)	H(added)	Clashes	Symm-Clashes
All	All	4329	0	4304	215	0

Clashscore is defined as the number of clashes calculated for the entry per 1000 atoms (including hydrogens) of the entry. The overall clashscore for this entry is 25.

All (215) close contacts within the same asymmetric unit are listed below.

Atom-1	Atom-2	Distance(Å)	Clash(Å)
1:A:241:THR:HG21	1:A:244:LYS:HD3	1.15	1.10
1:B:336:LYS:H	1:B:336:LYS:HD3	1.21	1.06
1:B:451:GLN:HE21	1:B:451:GLN:HA	1.23	1.03
1:B:358:LYS:HB3	1:B:359:PRO:CD	1.86	1.02
1:B:270:LEU:H	1:B:270:LEU:HD13	1.25	0.99
1:A:443:ARG:HE	1:B:444:GLN:NE2	1.67	0.92
1:A:241:THR:OG1	1:A:244:LYS:HB2	1.69	0.92
1:A:241:THR:HG21	1:A:244:LYS:CD	2.00	0.92
1:A:240:LYS:O	1:A:241:THR:HG23	1.74	0.87
1:A:212:ARG:HH12	1:A:420:GLN:HE21	1.20	0.87
1:A:241:THR:CG2	1:A:244:LYS:HD3	2.03	0.86
1:A:288:ARG:HH21	1:A:291:GLU:HG2	1.39	0.85
1:B:358:LYS:HB3	1:B:359:PRO:HD2	1.57	0.84
1:A:325:ILE:HD11	1:A:392:ILE:HG13	1.61	0.82
1:B:260:ASP:HA	1:B:265:LYS:HE2	1.59	0.82
1:B:286:GLN:HG2	2:B:5:MYI:HAE	1.67	0.75
1:B:451:GLN:O	1:B:454:GLN:HG3	1.87	0.75
1:B:270:LEU:CD1	1:B:270:LEU:H	1.99	0.75
1:A:219:TYR:CZ	1:A:223:ILE:HD11	2.23	0.73
1:A:363:PHE:HZ	1:A:456:ILE:HG13	1.54	0.72
1:B:335:ASN:HD22	1:B:335:ASN:C	1.93	0.72
1:B:342:SER:O	1:B:345:GLN:HB2	1.90	0.71
1:B:336:LYS:N	1:B:336:LYS:HD3	2.02	0.70
1:B:397:ARG:NH1	1:B:443:ARG:HH12	1.90	0.70
1:B:451:GLN:CA	1:B:451:GLN:HE21	2.00	0.69
1:A:441:ASP:O	1:A:445:ILE:HG12	1.92	0.69
1:B:456:ILE:HD13	1:B:456:ILE:O	1.92	0.69
1:A:446:VAL:O	1:A:450:VAL:HG23	1.93	0.69
1:B:270:LEU:HD13	1:B:270:LEU:N	2.06	0.68
1:B:384:LEU:O	1:B:388:ILE:HG12	1.94	0.67
1:A:334:MET:HE2	1:A:368:PHE:CE1	2.30	0.67
1:A:433:ALA:O	1:A:437:GLN:HG3	1.95	0.67
1:A:363:PHE:CZ	1:A:456:ILE:HG13	2.30	0.66
1:A:383:ASP:OD2	1:A:425:HIS:HE1	1.78	0.66
1:A:288:ARG:HH11	2:A:1:MYI:HAH	1.60	0.65

Continued on next page...

Continued from previous page...

Atom-1	Atom-2	Distance(Å)	Clash(Å)
1:B:457:LYS:O	1:B:458:LYS:HE3	1.96	0.65
1:B:358:LYS:HB3	1:B:359:PRO:HD3	1.79	0.64
1:B:330:LEU:HD11	2:B:4:MYI:HAA	1.80	0.64
1:B:275:LYS:NZ	1:B:275:LYS:HB2	2.13	0.63
1:B:358:LYS:HD2	1:B:359:PRO:HD3	1.79	0.63
1:A:212:ARG:HH12	1:A:420:GLN:NE2	1.94	0.63
1:A:236:ILE:HG23	1:A:244:LYS:O	2.00	0.62
1:A:379:LEU:HD11	1:A:435:LEU:HD13	1.81	0.62
1:B:357:ARG:HG3	1:B:358:LYS:N	2.14	0.62
1:B:451:GLN:NE2	1:B:451:GLN:HA	2.06	0.61
1:B:253:ASN:HB2	3:B:1073:HOH:O	1.99	0.61
1:A:354:LYS:HD3	1:A:365:GLU:CG	2.30	0.61
1:B:274:SER:C	1:B:276:GLU:H	2.03	0.61
1:B:263:LYS:C	1:B:265:LYS:H	2.03	0.61
1:B:357:ARG:HH22	1:B:459:THR:HG23	1.65	0.61
1:B:357:ARG:HE	1:B:358:LYS:HB2	1.66	0.60
1:B:358:LYS:CB	1:B:359:PRO:CD	2.73	0.60
1:B:323:HIS:NE2	2:B:5:MYI:HAG	2.17	0.60
1:B:265:LYS:O	1:B:269:PRO:HD3	2.02	0.60
1:A:452:LEU:O	1:A:456:ILE:HG12	2.01	0.60
1:B:252:MET:CE	1:B:277:VAL:HG21	2.32	0.60
1:B:273:GLN:HA	1:B:273:GLN:HE21	1.67	0.59
1:A:305:GLY:HA2	1:A:308:ASN:HD22	1.67	0.59
1:B:335:ASN:ND2	1:B:337:ASP:H	2.01	0.59
1:B:262:ILE:HB	1:B:264:PHE:HD1	1.68	0.59
1:B:453:LEU:O	1:B:457:LYS:HG2	2.03	0.59
1:A:279:ILE:HG23	1:A:463:MET:HE1	1.85	0.59
1:A:279:ILE:HG23	1:A:463:MET:CE	2.34	0.58
1:A:253:ASN:ND2	1:A:256:MET:HE3	2.19	0.58
1:B:290:VAL:HG21	1:B:473:TYR:CD2	2.39	0.58
1:B:263:LYS:NZ	1:B:263:LYS:HA	2.19	0.57
1:B:458:LYS:HA	1:B:458:LYS:HE3	1.86	0.57
1:B:402:ASN:O	1:B:405:PRO:HD2	2.06	0.56
1:B:325:ILE:HG23	1:B:388:ILE:HD12	1.87	0.56
1:A:411:ASP:O	1:A:415:GLN:HG3	2.05	0.56
1:B:320:TYR:HB2	1:B:397:ARG:HD2	1.87	0.56
1:B:441:ASP:O	1:B:445:ILE:HG12	2.06	0.56
1:A:244:LYS:HG2	3:A:1091:HOH:O	2.06	0.56
1:A:325:ILE:HD13	1:A:388:ILE:HG23	1.88	0.56
1:B:336:LYS:H	1:B:336:LYS:CD	2.07	0.55
1:B:373:LYS:HB3	1:B:438:LYS:HZ3	1.70	0.55
1:B:286:GLN:HG2	2:B:5:MYI:CAE	2.34	0.55

Continued on next page...

Continued from previous page...

Atom-1	Atom-2	Distance(Å)	Clash(Å)
1:B:373:LYS:HB3	1:B:438:LYS:NZ	2.21	0.55
1:B:466:HIS:O	1:B:467:PRO:C	2.44	0.55
1:B:460:GLU:HG3	1:B:461:THR:N	2.22	0.54
1:A:288:ARG:O	1:A:291:GLU:HB3	2.07	0.54
1:B:259:GLU:HA	1:B:264:PHE:CE1	2.43	0.54
1:A:465:LEU:O	1:A:470:GLN:HG3	2.08	0.54
1:A:325:ILE:HD11	1:A:392:ILE:CG1	2.35	0.54
1:A:466:HIS:ND1	1:A:467:PRO:HD2	2.23	0.53
1:B:397:ARG:NH1	1:B:443:ARG:NH1	2.56	0.53
1:A:286:GLN:NE2	1:A:466:HIS:H	2.06	0.53
1:B:447:THR:O	1:B:451:GLN:HG2	2.09	0.53
1:B:328:THR:OG1	1:B:442:LEU:HD11	2.09	0.52
1:A:293:VAL:HG11	1:A:468:LEU:HD11	1.91	0.52
1:A:239:GLY:C	1:A:241:THR:H	2.12	0.52
1:B:357:ARG:HH22	1:B:459:THR:CG2	2.23	0.52
1:B:340:LEU:HG	1:B:344:GLY:HA2	1.90	0.52
1:A:358:LYS:HB3	1:A:359:PRO:CD	2.39	0.52
1:A:243:ASP:OD2	1:A:244:LYS:HD2	2.10	0.52
1:B:330:LEU:O	1:B:334:MET:HG2	2.10	0.52
1:B:365:GLU:HB3	1:B:366:PRO:HD3	1.92	0.52
1:B:263:LYS:HA	1:B:263:LYS:HZ1	1.75	0.51
1:A:336:LYS:HG3	3:A:1077:HOH:O	2.10	0.51
1:B:244:LYS:HG3	1:B:244:LYS:O	2.11	0.51
1:A:277:VAL:HG13	1:A:278:ALA:N	2.25	0.51
1:A:222:TYR:CE2	1:A:381:ASP:HB3	2.46	0.51
1:A:334:MET:HE2	1:A:368:PHE:CD1	2.46	0.51
1:B:386:ILE:HD12	1:B:420:GLN:HG2	1.93	0.51
1:A:241:THR:CB	1:A:244:LYS:HB2	2.41	0.50
1:A:320:TYR:CE2	1:A:476:LEU:HD12	2.47	0.50
1:B:262:ILE:HB	1:B:264:PHE:CD1	2.46	0.50
1:B:263:LYS:O	1:B:263:LYS:HG3	2.11	0.50
1:B:335:ASN:HD22	1:B:337:ASP:H	1.60	0.50
1:A:251:ASP:HB2	1:A:252:MET:SD	2.51	0.50
1:B:270:LEU:HD22	1:B:270:LEU:O	2.12	0.49
1:B:273:GLN:HA	1:B:273:GLN:NE2	2.26	0.49
1:B:357:ARG:NH2	1:B:459:THR:HG23	2.28	0.49
1:A:440:THR:HG22	1:B:440:THR:HA	1.93	0.49
1:A:357:ARG:HH11	1:A:357:ARG:HG2	1.78	0.49
1:B:326:ILE:HG23	2:B:3:MYI:HAE	1.94	0.49
1:A:249:ILE:HA	1:A:254:SER:HB3	1.95	0.48
1:B:274:SER:C	1:B:276:GLU:N	2.66	0.48
1:B:275:LYS:HZ2	1:B:275:LYS:HB2	1.76	0.48

Continued on next page...

Continued from previous page...

Atom-1	Atom-2	Distance(Å)	Clash(Å)
1:B:397:ARG:HH12	1:B:443:ARG:NH1	2.11	0.48
1:B:457:LYS:C	1:B:458:LYS:HE3	2.33	0.48
1:B:456:ILE:C	1:B:458:LYS:H	2.16	0.48
1:A:394:SER:HB2	1:A:397:ARG:HG2	1.95	0.48
1:B:453:LEU:HA	1:B:456:ILE:HG22	1.96	0.48
1:B:335:ASN:C	1:B:335:ASN:ND2	2.65	0.48
1:B:236:ILE:HG21	1:B:340:LEU:HD11	1.95	0.48
1:B:274:SER:O	1:B:276:GLU:N	2.47	0.47
1:A:354:LYS:HD3	1:A:365:GLU:HG3	1.95	0.47
1:A:244:LYS:CG	3:A:1091:HOH:O	2.62	0.47
1:A:238:THR:O	1:A:240:LYS:N	2.48	0.47
1:B:339:VAL:HG21	2:B:4:MYI:HAAA	1.97	0.47
1:A:252:MET:HG2	1:A:253:ASN:N	2.29	0.47
1:B:394:SER:O	1:B:397:ARG:HG2	2.15	0.47
1:A:330:LEU:HD23	3:A:1013:HOH:O	2.15	0.47
1:B:349:THR:HG22	1:B:351:GLU:H	1.80	0.47
1:B:457:LYS:HB2	1:B:458:LYS:NZ	2.30	0.46
1:B:354:LYS:O	1:B:354:LYS:HD2	2.15	0.46
1:B:460:GLU:HG3	1:B:461:THR:H	1.80	0.46
1:B:458:LYS:HE3	1:B:458:LYS:CA	2.46	0.46
1:B:268:THR:N	1:B:269:PRO:CD	2.78	0.46
1:B:292:ALA:O	1:B:295:GLU:HB2	2.15	0.46
1:B:379:LEU:HD11	1:B:435:LEU:HD13	1.98	0.46
1:A:240:LYS:HB2	1:A:240:LYS:NZ	2.31	0.46
1:A:219:TYR:O	1:A:222:TYR:HB3	2.16	0.46
1:B:339:VAL:HG21	2:B:4:MYI:CAA	2.46	0.46
1:A:386:ILE:HD12	1:A:420:GLN:HG2	1.98	0.45
1:B:454:GLN:HA	1:B:457:LYS:HG2	1.97	0.45
1:B:370:PHE:CZ	1:B:442:LEU:HG	2.51	0.45
1:A:225:SER:O	1:A:295:GLU:HG2	2.17	0.45
1:A:253:ASN:ND2	1:A:256:MET:CE	2.80	0.45
1:B:267:ILE:C	1:B:270:LEU:HD11	2.36	0.45
1:B:460:GLU:O	1:B:461:THR:C	2.55	0.45
1:A:373:LYS:O	1:A:376:ALA:HB3	2.17	0.45
1:B:276:GLU:OE2	1:B:357:ARG:NH1	2.50	0.45
1:A:387:PHE:O	1:A:391:ILE:HG12	2.16	0.44
1:A:240:LYS:O	1:A:241:THR:CG2	2.57	0.44
1:B:265:LYS:C	1:B:269:PRO:HD3	2.37	0.44
1:A:358:LYS:HB3	1:A:359:PRO:HD3	2.00	0.44
1:B:276:GLU:OE2	1:B:357:ARG:HD3	2.17	0.44
1:B:357:ARG:CG	1:B:358:LYS:H	2.30	0.44
1:A:239:GLY:O	1:A:241:THR:N	2.48	0.44

Continued on next page...

Continued from previous page...

Atom-1	Atom-2	Distance(Å)	Clash(Å)
1:B:237:LEU:HD12	1:B:237:LEU:H	1.82	0.44
1:B:287:PHE:HA	1:B:473:TYR:CE2	2.52	0.44
1:B:237:LEU:HD23	1:B:335:ASN:OD1	2.17	0.44
1:A:252:MET:HG2	1:A:253:ASN:H	1.82	0.44
1:B:290:VAL:HG21	1:B:473:TYR:HD2	1.81	0.44
1:B:311:LEU:N	1:B:311:LEU:HD22	2.32	0.44
1:A:465:LEU:O	1:A:466:HIS:C	2.56	0.43
1:B:357:ARG:CG	1:B:358:LYS:N	2.75	0.43
1:B:271:GLN:O	1:B:273:GLN:HG2	2.18	0.43
1:B:219:TYR:CZ	1:B:223:ILE:HD11	2.53	0.43
1:A:226:PHE:HA	1:A:227:PRO:HD3	1.86	0.43
1:B:325:ILE:HD11	1:B:392:ILE:HG12	1.99	0.43
1:B:465:LEU:C	1:B:467:PRO:HD2	2.39	0.43
1:B:466:HIS:O	1:B:470:GLN:N	2.43	0.43
1:B:356:LEU:O	1:B:357:ARG:O	2.36	0.43
1:A:311:LEU:HD12	1:A:311:LEU:HA	1.87	0.43
1:B:335:ASN:HD22	1:B:337:ASP:N	2.16	0.43
1:B:363:PHE:O	1:B:366:PRO:HD2	2.18	0.43
1:A:291:GLU:O	1:A:294:GLN:HB2	2.19	0.42
1:A:253:ASN:HD22	1:A:253:ASN:N	2.15	0.42
1:A:402:ASN:O	1:A:406:ILE:HD13	2.19	0.42
1:B:217:HIS:HE1	1:B:302:SER:O	2.01	0.42
1:B:237:LEU:N	1:B:237:LEU:HD12	2.34	0.42
1:A:404:LYS:N	1:A:405:PRO:HD2	2.34	0.42
1:A:469:LEU:HD12	1:A:469:LEU:HA	1.91	0.42
1:B:436:LEU:O	1:B:439:MET:HB2	2.19	0.42
1:B:453:LEU:O	1:B:456:ILE:HG22	2.19	0.42
1:B:335:ASN:ND2	1:B:337:ASP:N	2.68	0.42
1:B:330:LEU:HG	1:B:334:MET:CE	2.50	0.42
1:B:446:VAL:O	1:B:450:VAL:HG23	2.19	0.42
1:B:330:LEU:CD2	1:B:334:MET:HE3	2.50	0.42
1:A:216:LYS:HE3	1:A:216:LYS:HB2	1.84	0.42
1:A:417:LEU:O	1:A:421:LEU:HG	2.20	0.42
1:B:252:MET:HE1	1:B:277:VAL:HG21	2.01	0.41
1:A:212:ARG:HA	1:A:212:ARG:HD2	1.84	0.41
1:B:411:ASP:O	1:B:415:GLN:HG3	2.20	0.41
1:B:357:ARG:O	1:B:358:LYS:O	2.38	0.41
1:A:321:GLY:O	1:A:325:ILE:HG13	2.20	0.41
1:B:263:LYS:C	1:B:265:LYS:N	2.70	0.41
1:A:465:LEU:HD23	1:A:470:GLN:HG2	2.02	0.41
1:A:427:GLU:HB2	3:A:1093:HOH:O	2.19	0.41
1:A:327:TYR:HE1	1:A:446:VAL:HG22	1.84	0.41

Continued on next page...

Continued from previous page...

Atom-1	Atom-2	Distance(Å)	Clash(Å)
1:B:286:GLN:NE2	2:B:5:MYI:HNAI	2.19	0.41
1:B:252:MET:HE3	1:B:277:VAL:HG21	2.03	0.41
1:B:348:MET:SD	1:B:353:LEU:HD21	2.61	0.41
1:B:439:MET:O	1:B:443:ARG:HG2	2.21	0.41
1:B:468:LEU:O	1:B:472:ILE:HG13	2.20	0.41
1:A:323:HIS:HB2	3:A:1071:HOH:O	2.21	0.41
1:A:239:GLY:C	1:A:241:THR:N	2.74	0.40
1:B:419:LEU:HD11	1:B:423:LEU:HD11	2.02	0.40
1:A:228:LEU:HD12	1:A:232:LYS:HB3	2.01	0.40
1:A:360:PHE:C	1:A:362:ASP:H	2.25	0.40
1:B:212:ARG:HA	1:B:212:ARG:NE	2.36	0.40
1:A:252:MET:HG2	1:A:253:ASN:ND2	2.36	0.40

There are no symmetry-related clashes.

5.3 Torsion angles

5.3.1 Protein backbone ⓘ

In the following table, the Percentiles column shows the percent Ramachandran outliers of the chain as a percentile score with respect to all X-ray entries followed by that with respect to entries of similar resolution. The Analysed column shows the number of residues for which the backbone conformation was analysed, and the total number of residues.

Mol	Chain	Analysed	Favoured	Allowed	Outliers	Percentiles	
1	A	255/287 (89%)	243 (95%)	7 (3%)	5 (2%)	11	33
1	B	255/287 (89%)	229 (90%)	19 (8%)	7 (3%)	8	24
All	All	510/574 (89%)	472 (92%)	26 (5%)	12 (2%)	9	28

All (12) Ramachandran outliers are listed below:

Mol	Chain	Res	Type
1	A	358	LYS
1	B	357	ARG
1	B	358	LYS
1	A	239	GLY
1	B	274	SER
1	A	204	LEU
1	B	275	LYS
1	B	270	LEU

Continued on next page...

Continued from previous page...

Mol	Chain	Res	Type
1	B	277	VAL
1	B	467	PRO
1	A	304	PRO
1	A	466	HIS

5.3.2 Protein sidechains ⓘ

In the following table, the Percentiles column shows the percent sidechain outliers of the chain as a percentile score with respect to all X-ray entries followed by that with respect to entries of similar resolution. The Analysed column shows the number of residues for which the sidechain conformation was analysed, and the total number of residues.

Mol	Chain	Analysed	Rotameric	Outliers	Percentiles	
1	A	228/258 (88%)	215 (94%)	13 (6%)	29	62
1	B	234/258 (91%)	212 (91%)	22 (9%)	13	33
All	All	462/516 (90%)	427 (92%)	35 (8%)	19	44

All (35) residues with a non-rotameric sidechain are listed below:

Mol	Chain	Res	Type
1	A	240	LYS
1	A	241	THR
1	A	244	LYS
1	A	246	PRO
1	A	252	MET
1	A	255	LEU
1	A	280	ARG
1	A	288	ARG
1	A	322	VAL
1	A	336	LYS
1	A	402	ASN
1	A	443	ARG
1	A	469	LEU
1	B	207	GLU
1	B	224	LYS
1	B	230	LYS
1	B	253	ASN
1	B	263	LYS
1	B	270	LEU
1	B	276	GLU
1	B	318	LEU

Continued on next page...

Continued from previous page...

Mol	Chain	Res	Type
1	B	335	ASN
1	B	336	LYS
1	B	354	LYS
1	B	357	ARG
1	B	424	ASN
1	B	427	GLU
1	B	442	LEU
1	B	451	GLN
1	B	454	GLN
1	B	456	ILE
1	B	458	LYS
1	B	466	HIS
1	B	467	PRO
1	B	468	LEU

Some sidechains can be flipped to improve hydrogen bonding and reduce clashes. All (20) such sidechains are listed below:

Mol	Chain	Res	Type
1	A	253	ASN
1	A	283	GLN
1	A	286	GLN
1	A	308	ASN
1	A	415	GLN
1	A	420	GLN
1	A	425	HIS
1	A	430	GLN
1	B	217	HIS
1	B	253	ASN
1	B	273	GLN
1	B	283	GLN
1	B	286	GLN
1	B	308	ASN
1	B	312	ASN
1	B	335	ASN
1	B	424	ASN
1	B	430	GLN
1	B	444	GLN
1	B	451	GLN

5.3.3 RNA ⓘ

There are no RNA chains in this entry.

5.4 Non-standard residues in protein, DNA, RNA chains ⓘ

There are no non-standard protein/DNA/RNA residues in this entry.

5.5 Carbohydrates ⓘ

There are no carbohydrates in this entry.

5.6 Ligand geometry ⓘ

5 ligands are modelled in this entry.

In the following table, the Counts columns list the number of bonds (or angles) for which Mogul statistics could be retrieved, the number of bonds (or angles) that are observed in the model and the number of bonds (or angles) that are defined in the chemical component dictionary. The Link column lists molecule types, if any, to which the group is linked. The Z score for a bond length (or angle) is the number of standard deviations the observed value is removed from the expected value. A bond length (or angle) with $|Z| > 2$ is considered an outlier worth inspection. RMSZ is the root-mean-square of all Z scores of the bond lengths (or angles).

Mol	Type	Chain	Res	Link	Bond lengths			Bond angles		
					Counts	RMSZ	# $ Z > 2$	Counts	RMSZ	# $ Z > 2$
2	MYI	A	1	-	16,16,16	2.04	6 (37%)	22,22,22	1.10	2 (9%)
2	MYI	A	2	-	16,16,16	2.03	5 (31%)	22,22,22	0.97	1 (4%)
2	MYI	B	3	-	16,16,16	1.94	4 (25%)	22,22,22	1.01	3 (13%)
2	MYI	B	4	-	16,16,16	1.91	5 (31%)	22,22,22	0.90	1 (4%)
2	MYI	B	5	-	16,16,16	1.96	5 (31%)	22,22,22	0.92	1 (4%)

In the following table, the Chirals column lists the number of chiral outliers, the number of chiral centers analysed, the number of these observed in the model and the number defined in the chemical component dictionary. Similar counts are reported in the Torsion and Rings columns. '-' means no outliers of that kind were identified.

Mol	Type	Chain	Res	Link	Chirals	Torsions	Rings
2	MYI	A	1	-	-	0/6/6/6	0/0/2/2
2	MYI	A	2	-	-	0/6/6/6	0/0/2/2
2	MYI	B	3	-	-	0/6/6/6	0/0/2/2
2	MYI	B	4	-	-	0/6/6/6	0/0/2/2

Continued on next page...

Continued from previous page...

Mol	Type	Chain	Res	Link	Chirals	Torsions	Rings
2	MYI	B	5	-	-	0/6/6/6	0/0/2/2

All (25) bond length outliers are listed below:

Mol	Chain	Res	Type	Atoms	Z	Observed(Å)	Ideal(Å)
2	A	1	MYI	CAG-CAL	5.01	1.46	1.37
2	B	5	MYI	CAG-CAL	4.79	1.45	1.37
2	A	2	MYI	CAG-CAL	4.78	1.45	1.37
2	B	4	MYI	CAG-CAL	4.62	1.45	1.37
2	B	3	MYI	CAG-CAL	4.49	1.45	1.37
2	A	2	MYI	CAE-CAD	3.31	1.43	1.36
2	B	3	MYI	CAE-CAD	3.24	1.43	1.36
2	B	4	MYI	CAE-CAD	3.18	1.43	1.36
2	B	5	MYI	CAE-CAD	3.04	1.43	1.36
2	A	1	MYI	CAE-CAD	2.93	1.42	1.36
2	A	2	MYI	CAD-CAL	2.75	1.44	1.38
2	B	5	MYI	CAD-CAL	2.70	1.44	1.38
2	B	3	MYI	CAD-CAL	2.67	1.44	1.38
2	B	4	MYI	CAD-CAL	2.62	1.44	1.38
2	A	2	MYI	CAF-CAM	-2.61	1.33	1.37
2	A	1	MYI	CAD-CAL	2.60	1.44	1.38
2	A	1	MYI	CAH-CAK	2.34	1.56	1.50
2	A	1	MYI	CAF-NAI	-2.30	1.33	1.37
2	B	5	MYI	CAF-CAM	-2.23	1.34	1.37
2	B	5	MYI	CAF-NAI	-2.22	1.33	1.37
2	A	2	MYI	CAF-NAI	-2.15	1.33	1.37
2	B	4	MYI	CAF-NAI	-2.11	1.33	1.37
2	A	1	MYI	CAF-CAM	-2.07	1.34	1.37
2	B	4	MYI	CAF-CAM	-2.07	1.34	1.37
2	B	3	MYI	CAF-NAI	-2.04	1.33	1.37

All (8) bond angle outliers are listed below:

Mol	Chain	Res	Type	Atoms	Z	Observed(°)	Ideal(°)
2	A	1	MYI	OAB-CAK-CAH	-2.68	116.60	123.19
2	A	2	MYI	OAB-CAK-CAH	-2.52	117.00	123.19
2	B	5	MYI	OAB-CAK-CAH	-2.45	117.16	123.19
2	B	4	MYI	OAB-CAK-CAH	-2.38	117.34	123.19
2	B	3	MYI	OAB-CAK-CAH	-2.34	117.44	123.19
2	B	3	MYI	CAM-CAF-NAI	2.10	111.49	107.94
2	A	1	MYI	CAM-CAF-NAI	2.05	111.40	107.94
2	B	3	MYI	CAA-OAJ-CAL	2.04	122.50	117.54

There are no chirality outliers.

There are no torsion outliers.

There are no ring outliers.

5.7 Other polymers ⓘ

There are no such residues in this entry.

5.8 Polymer linkage issues

There are no chain breaks in this entry.

6 Fit of model and data ⓘ

6.1 Protein, DNA and RNA chains ⓘ

In the following table, the column labelled ‘#RSRZ> 2’ contains the number (and percentage) of RSRZ outliers, followed by percent RSRZ outliers for the chain as percentile scores relative to all X-ray entries and entries of similar resolution. The OWAB column contains the minimum, median, 95th percentile and maximum values of the occupancy-weighted average B-factor per residue. The column labelled ‘Q< 0.9’ lists the number of (and percentage) of residues with an average occupancy less than 0.9.

Mol	Chain	Analysed	<RSRZ>	#RSRZ>2	OWAB(Å ²)	Q<0.9
1	A	259/287 (90%)	0.04	8 (3%) 47 49	27, 44, 73, 101	0
1	B	261/287 (90%)	0.58	26 (9%) 8 7	28, 49, 107, 137	0
All	All	520/574 (90%)	0.31	34 (6%) 18 18	27, 46, 90, 137	0

All (34) RSRZ outliers are listed below:

Mol	Chain	Res	Type	RSRZ
1	B	464	SER	10.3
1	B	265	LYS	7.3
1	B	273	GLN	6.9
1	B	264	PHE	6.2
1	B	271	GLN	5.6
1	B	272	GLU	5.4
1	B	267	ILE	5.0
1	B	274	SER	4.9
1	B	270	LEU	4.7
1	B	456	ILE	4.7
1	B	459	THR	4.1
1	B	262	ILE	3.9
1	B	465	LEU	3.8
1	B	266	HIS	3.7
1	A	260	ASP	3.5
1	B	454	GLN	3.3
1	A	358	LYS	3.2
1	B	207	GLU	3.0
1	A	463	MET	3.0
1	B	268	THR	2.7
1	B	279	ILE	2.7
1	A	427	GLU	2.7
1	A	259	GLU	2.6
1	B	244	LYS	2.4

Continued on next page...

Continued from previous page...

Mol	Chain	Res	Type	RSRZ
1	B	256	MET	2.4
1	B	423	LEU	2.3
1	A	206	PRO	2.3
1	B	358	LYS	2.3
1	B	461	THR	2.1
1	B	455	VAL	2.1
1	B	247	PHE	2.1
1	A	242	THR	2.0
1	B	252	MET	2.0
1	A	203	GLN	2.0

6.2 Non-standard residues in protein, DNA, RNA chains ⓘ

There are no non-standard protein/DNA/RNA residues in this entry.

6.3 Carbohydrates ⓘ

There are no carbohydrates in this entry.

6.4 Ligands ⓘ

In the following table, the Atoms column lists the number of modelled atoms in the group and the number defined in the chemical component dictionary. LLDF column lists the quality of electron density of the group with respect to its neighbouring residues in protein, DNA or RNA chains. The B-factors column lists the minimum, median, 95th percentile and maximum values of B factors of atoms in the group. The column labelled 'Q< 0.9' lists the number of atoms with occupancy less than 0.9.

Mol	Type	Chain	Res	Atoms	RSR	LLDF	B-factors(Å ²)	Q<0.9
2	MYI	A	1	15/15	0.31	4.48	88,89,91,92	0
2	MYI	B	3	15/15	0.30	2.54	89,90,91,92	0
2	MYI	B	5	15/15	0.34	2.10	102,104,105,105	0
2	MYI	B	4	15/15	0.43	1.43	107,109,110,110	0
2	MYI	A	2	15/15	0.21	1.00	63,66,71,71	0

6.5 Other polymers ⓘ

There are no such residues in this entry.