



Full wwPDB X-ray Structure Validation Report

Aug 7, 2014 – 09:48 PM EDT

PDB ID : 4AFK
Title : In meso structure of alginate transporter, AlgE, from Pseudomonas aeruginosa, PAO1
Authors : Tan, J.; Pye, V.E.; Aragao, D.; Caffrey, M.
Deposited on : 2012-01-19
Resolution : 1.90 Å(reported)

This is a full wwPDB validation report for a publicly released PDB entry.
We welcome your comments at validation@mail.wwpdb.org
A user guide is available at <http://wwpdb.org/ValidationPDFNotes.html>

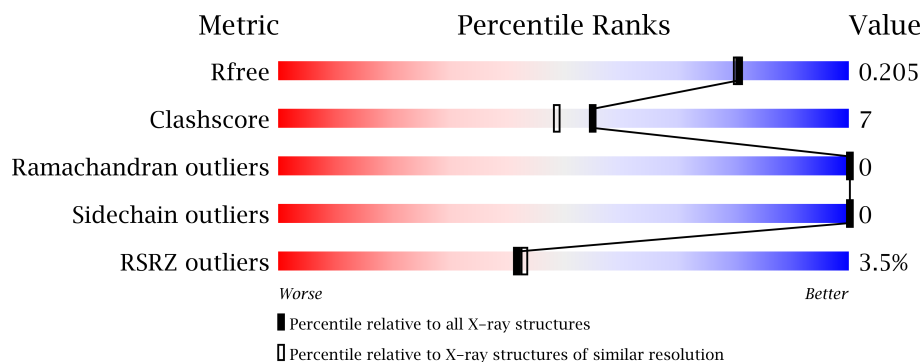
The following versions of software and data (see [references](#)) were used in the production of this report:

MolProbity : 4.02b-467
Mogul : 1.16 November 2013
Xtriage (Phenix) : dev-1439
EDS : stable23489
Percentile statistics : 21963
Refmac : 5.8.0049
CCP4 : 6.3.0 (Settle)
Ideal geometry (proteins) : Engh & Huber (2001)
Ideal geometry (DNA, RNA) : Parkinson et. al. (1996)
Validation Pipeline (wwPDB-VP) : stable23489

1 Overall quality at a glance

The reported resolution of this entry is 1.90 Å.

Percentile scores (ranging between 0-100) for global validation metrics of the entry are shown in the following graphic. The table shows the number of entries on which the scores are based.



Metric	Whole archive (#Entries)	Similar resolution (#Entries, resolution range(Å))
R_{free}	66092	3684 (1.90-1.90)
Clashscore	79885	4465 (1.90-1.90)
Ramachandran outliers	78287	4413 (1.90-1.90)
Sidechain outliers	78261	4414 (1.90-1.90)
RSRZ outliers	66119	3686 (1.90-1.90)

The table below summarises the geometric issues observed across the polymeric chains and their fit to the electron density. The red, orange, yellow and green segments on the lower bar indicate the fraction of residues that contain outliers for ≥ 3 , 2, 1 and 0 types of geometric quality criteria. The upper red bar (where present) indicates the fraction of residues that have poor fit to the electron density.

Mol	Chain	Length	Quality of chain
1	A	458	

The following table lists non-polymeric compounds that are outliers for geometric or electron-density-fit criteria:

Mol	Type	Chain	Res	Geometry	Electron density
3	FLC	A	1491	-	X
4	LDA	A	1492	-	X
4	LDA	A	1493	-	X
4	LDA	A	1494	-	X
4	LDA	A	1495	-	X
4	LDA	A	1496	-	X
4	LDA	A	1497	-	X

Continued on next page...

Continued from previous page...

Mol	Type	Chain	Res	Geometry	Electron density
4	LDA	A	1498	-	X
4	LDA	A	1499	-	X
4	LDA	A	1500	-	X
4	LDA	A	1501	-	X
4	LDA	A	1502	-	X
4	LDA	A	1503	-	X
4	LDA	A	1504	-	X
4	LDA	A	1505	-	X
4	LDA	A	1506	-	X
5	NA	A	1508	-	X
6	78M	A	1512	-	X
6	78M	A	1515	-	X
7	78N	A	1511	-	X
7	78N	A	1513	-	X
7	78N	A	1514	-	X
8	PE5	A	1517	-	X

2 Entry composition

There are 9 unique types of molecules in this entry. The entry contains 4073 atoms, of which 0 are hydrogen and 0 are deuterium.

In the tables below, the ZeroOcc column contains the number of atoms modelled with zero occupancy, the AltConf column contains the number of residues with at least one atom in alternate conformation and the Trace column contains the number of residues modelled with at most 2 atoms.

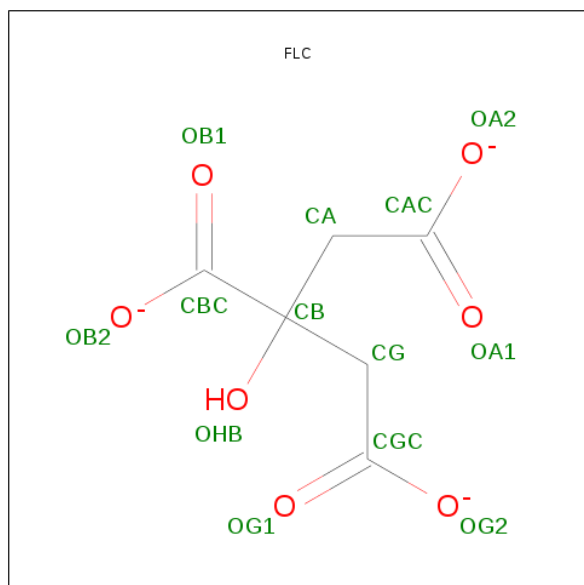
- Molecule 1 is a protein called ALGINATE PRODUCTION PROTEIN ALGE.

Mol	Chain	Residues	Atoms					ZeroOcc	AltConf	Trace
1	A	430	Total	C	N	O	S	0	9	0
			3489	2181	620	685	3			

- Molecule 2 is CALCIUM ION (three-letter code: CA) (formula: Ca).

Mol	Chain	Residues	Atoms		ZeroOcc	AltConf
2	A	1	Total	Ca	0	0
			1	1		

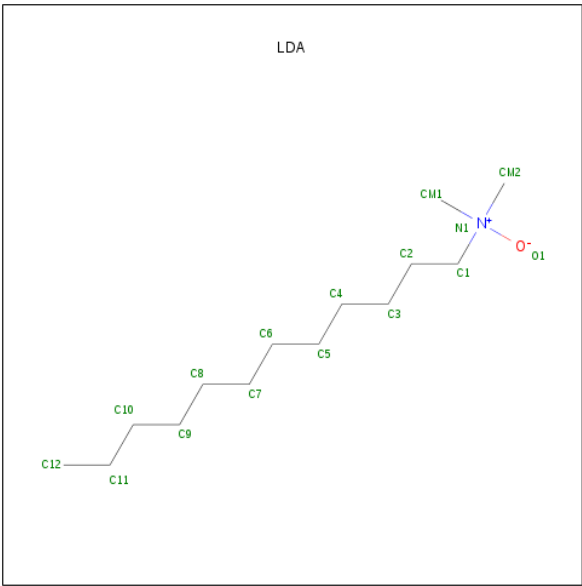
- Molecule 3 is CITRATE ANION (three-letter code: FLC) (formula: C₆H₅O₇).



Mol	Chain	Residues	Atoms			ZeroOcc	AltConf
3	A	1	Total	C	O	0	0
			13	6	7		

- Molecule 4 is LAURYL DIMETHYLAMINE-N-OXIDE (three-letter code: LDA) (formula:

C₁₄H₃₁NO).



Mol	Chain	Residues	Atoms				ZeroOcc	AltConf
4	A	1	Total	C	N	O	0	0
			16	14	1	1		
4	A	1	Total	C	N	O	0	0
			16	14	1	1		
4	A	1	Total	C	N	O	0	0
			16	14	1	1		
4	A	1	Total	C	N	O	0	0
			11	9	1	1		
4	A	1	Total	C	N	O	0	0
			16	14	1	1		
4	A	1	Total	C	N	O	0	0
			13	11	1	1		
4	A	1	Total	C			0	0
			9	9				
4	A	1	Total	C			0	0
			10	10				
4	A	1	Total	C			0	0
			12	12				
4	A	1	Total	C			0	0
			8	8				
4	A	1	Total	C			0	0
			7	7				
4	A	1	Total	C			0	0
			9	9				
4	A	1	Total	C			0	0
			9	9				

Continued on next page...

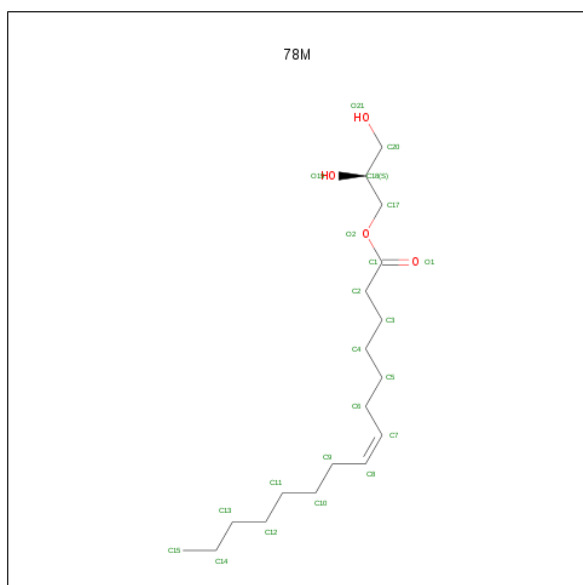
Continued from previous page...

Mol	Chain	Residues	Atoms		ZeroOcc	AltConf
4	A	1	Total	C	0	0
			8	8		
4	A	1	Total	C	0	0
			11	11		

- Molecule 5 is SODIUM ION (three-letter code: NA) (formula: Na).

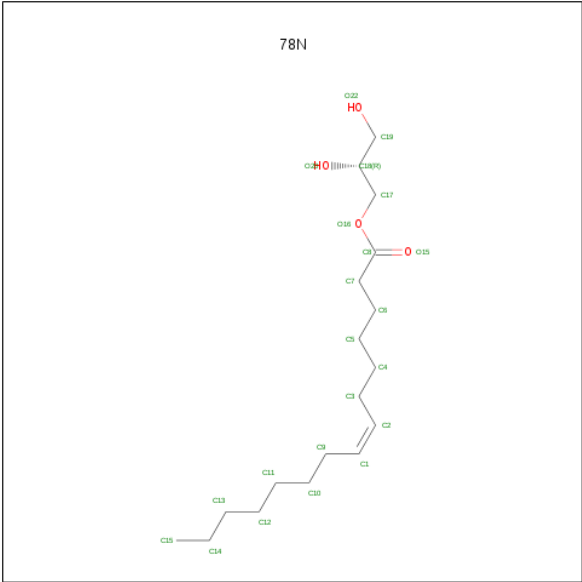
Mol	Chain	Residues	Atoms		ZeroOcc	AltConf
5	A	2	Total	Na	0	0
			2	2		

- Molecule 6 is (2S)-2,3-DIHYDROXYPROPYL(7Z)-PENTADEC-7-ENOATE (three-letter code: 78M) (formula: C₁₈H₃₄O₄).



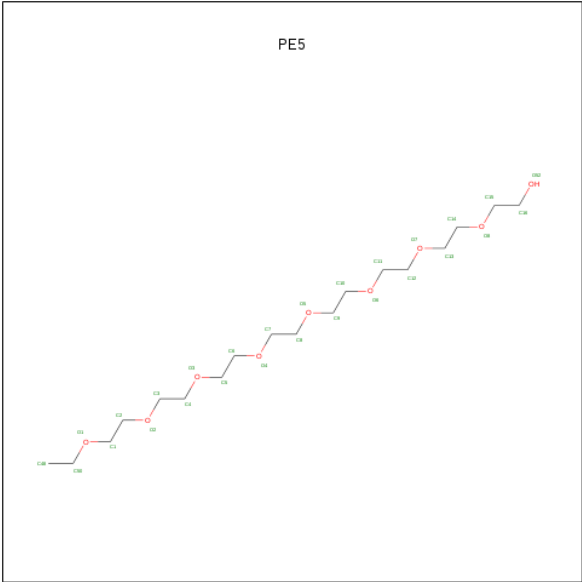
Mol	Chain	Residues	Atoms			ZeroOcc	AltConf
6	A	1	Total	C	O	0	0
			22	18	4		
6	A	1	Total	C	O	0	0
			22	18	4		
6	A	1	Total	C	O	0	0
			22	18	4		

- Molecule 7 is (2R)-2,3-DIHYDROXYPROPYL(7Z)-PENTADEC-7-ENOATE (three-letter code: 78N) (formula: C₁₈H₃₄O₄).



Mol	Chain	Residues	Atoms			ZeroOcc	AltConf
7	A	1	Total	C	O	0	0
			22	18	4		
7	A	1	Total	C	O	0	0
			22	18	4		
7	A	1	Total	C	O	0	0
			22	18	4		

- Molecule 8 is 3,6,9,12,15,18,21,24-OCTAOXAHEXACOSAN-1-OL (three-letter code: PE5) (formula: C₁₈H₃₈O₉).



Mol	Chain	Residues	Atoms			ZeroOcc	AltConf
8	A	1	Total	C	O	0	0
			15	10	5		
8	A	1	Total	C	O	0	0
			8	5	3		

- Molecule 9 is water.

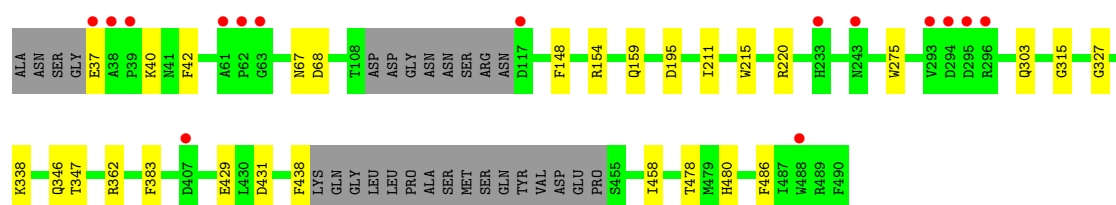
Mol	Chain	Residues	Atoms		ZeroOcc	AltConf
9	A	242	Total	O	0	0
			242	242		

3 Residue-property plots

These plots are drawn for all protein, RNA and DNA chains in the entry. The first graphic for a chain summarises the proportions of errors displayed in the second graphic. The second graphic shows the sequence view annotated by issues in geometry and electron density. Residues are color-coded according to the number of geometric quality criteria for which they contain at least one outlier: green = 0, yellow = 1, orange = 2 and red = 3 or more. A red dot above a residue indicates a poor fit to the electron density ($RSRZ > 2$). Stretches of 2 or more consecutive residues without any outlier are shown as a green connector. Residues present in the sample, but not in the model, are shown in grey.

• Molecule 1: ALGINATE PRODUCTION PROTEIN ALGE

Chain A: 



4 Data and refinement statistics

Property	Value	Source
Space group	C 1 2 1	Depositor
Cell constants a, b, c, α , β , γ	57.25Å 74.42Å 115.53Å 90.00° 101.56° 90.00°	Depositor
Resolution (Å)	19.77 – 1.90 19.77 – 1.90	Depositor EDS
% Data completeness (in resolution range)	94.5 (19.77-1.90) 97.7 (19.77-1.90)	Depositor EDS
R_{merge}	0.14	Depositor
R_{sym}	(Not available)	Depositor
$\langle I/\sigma(I) \rangle$ ¹	2.65 (at 1.90Å)	Xtriage
Refinement program	PHENIX (PHENIX.REFINE)	Depositor
R, R_{free}	0.163 , 0.209 0.163 , 0.205	Depositor DCC
R_{free} test set	1842 reflections (5.01%)	DCC
Wilson B-factor (Å ²)	16.6	Xtriage
Anisotropy	0.374	Xtriage
Bulk solvent k_{sol} (e/Å ³), B_{sol} (Å ²)	0.39 , 48.7	EDS
Estimated twinning fraction	0.021 for h,-k,-h-l	Xtriage
L-test for twinning	$\langle L \rangle = 0.49$, $\langle L^2 \rangle = 0.32$	Xtriage
Outliers	0 of 36787 reflections	Xtriage
F_o, F_c correlation	0.96	EDS
Total number of atoms	4073	wwPDB-VP
Average B, all atoms (Å ²)	23.0	wwPDB-VP

Xtriage's analysis on translational NCS is as follows: *The largest off-origin peak in the Patterson function is 5.94% of the height of the origin peak. No significant pseudotranslation is detected.*

¹Intensities estimated from amplitudes.

5 Model quality

5.1 Standard geometry

Bond lengths and bond angles in the following residue types are not validated in this section: LDA, NA, CA, PE5, 78M, FLC, 78N

The Z score for a bond length (or angle) is the number of standard deviations the observed value is removed from the expected value. A bond length (or angle) with $|Z| > 5$ is considered an outlier worth inspection. RMSZ is the root-mean-square of all Z scores of the bond lengths (or angles).

Mol	Chain	Bond lengths		Bond angles	
		RMSZ	$\# Z > 5$	RMSZ	$\# Z > 5$
1	A	0.55	0/3581	0.65	0/4854

There are no bond length outliers.

There are no bond angle outliers.

There are no chirality outliers.

There are no planarity outliers.

5.2 Close contacts

In the following table, the Non-H and H(model) columns list the number of non-hydrogen atoms and hydrogen atoms in the chain respectively. The H(added) column lists the number of hydrogens added by MolProbity. The Clashes column lists the number of clashes within the asymmetric unit, and the number in parentheses is this value normalized per 1000 atoms of the molecule in the chain. The Symm-Clashes column gives symmetry related clashes, in the same way as for the Clashes column.

Mol	Chain	Non-H	H(model)	H(added)	Clashes	Symm-Clashes
1	A	3489	0	3243	35	1
2	A	1	0	0	0	0
3	A	13	0	5	0	0
4	A	171	0	297	24	0
5	A	2	0	0	0	0
6	A	66	0	102	12	0
7	A	66	0	102	2	0
8	A	23	0	26	4	0
9	A	242	0	0	3	0
All	All	4073	0	3775	51	1

Clashscore is defined as the number of clashes calculated for the entry per 1000 atoms (including

hydrogens) of the entry. The overall clashscore for this entry is 7.

All (51) close contacts within the same asymmetric unit are listed below.

Atom-1	Atom-2	Distance(Å)	Clash(Å)
4:A:1494:LDA:H32	6:A:1515:78M:H32C	1.63	0.80
4:A:1496:LDA:H42	7:A:1511:78N:O15	1.83	0.78
1:A:438:PHE:HE2	1:A:458[A]:ILE:HG23	1.58	0.67
4:A:1494:LDA:CM1	6:A:1515:78M:H171	2.29	0.63
1:A:438:PHE:CE2	1:A:458[A]:ILE:HG23	2.32	0.63
1:A:362[B]:ARG:HG3	9:A:2201:HOH:O	1.98	0.63
4:A:1494:LDA:H51	6:A:1515:78M:H52C	1.82	0.62
1:A:458[A]:ILE:HG22	1:A:486:PHE:HD1	1.65	0.61
4:A:1494:LDA:H72	6:A:1515:78M:H52C	1.82	0.60
1:A:154:ARG:HE	1:A:362[B]:ARG:HH12	1.51	0.58
1:A:347:THR:HG23	8:A:1517:PE5:C5	2.32	0.58
4:A:1494:LDA:HM11	6:A:1515:78M:H171	1.88	0.56
1:A:275:TRP:CZ2	1:A:315:GLY:HA3	2.41	0.56
4:A:1494:LDA:H51	6:A:1515:78M:H32C	1.89	0.55
1:A:211[B]:ILE:HG13	4:A:1498:LDA:H41	1.88	0.55
4:A:1494:LDA:C3	6:A:1515:78M:H32C	2.35	0.54
1:A:480:HIS:CG	6:A:1515:78M:H31C	2.44	0.53
1:A:154:ARG:NE	1:A:362[B]:ARG:NH1	2.56	0.53
4:A:1494:LDA:H51	6:A:1515:78M:C5	2.39	0.52
1:A:215:TRP:CZ2	4:A:1503:LDA:H62	2.44	0.52
4:A:1494:LDA:C7	6:A:1515:78M:H52C	2.40	0.52
4:A:1499:LDA:H62	7:A:1514:78N:H61C	1.93	0.51
1:A:215:TRP:CD2	4:A:1503:LDA:H41	2.45	0.51
1:A:40:LYS:HE2	1:A:42:PHE:O	2.09	0.51
1:A:275:TRP:CE2	1:A:315:GLY:HA3	2.45	0.51
1:A:347:THR:H	8:A:1517:PE5:C5	2.24	0.50
1:A:67:ASN:O	4:A:1493:LDA:HM23	2.12	0.50
1:A:458[A]:ILE:CG2	1:A:486:PHE:HD1	2.25	0.50
1:A:346:GLN:HG2	8:A:1517:PE5:H42	1.93	0.50
1:A:438:PHE:HZ	1:A:458[A]:ILE:HD13	1.77	0.50
1:A:148:PHE:CE1	4:A:1506:LDA:H72	2.46	0.49
1:A:154:ARG:NH2	1:A:362[B]:ARG:NH1	2.60	0.48
1:A:220:ARG:HG2	9:A:2132:HOH:O	2.14	0.48
4:A:1494:LDA:HM12	6:A:1515:78M:H201	1.95	0.47
1:A:327:GLY:HA3	1:A:383:PHE:CZ	2.49	0.47
1:A:154:ARG:NE	1:A:362[B]:ARG:HH12	2.11	0.47
1:A:429:GLU:OE2	1:A:431:ASP:OD1	2.33	0.47
1:A:154:ARG:CZ	1:A:362[B]:ARG:NH1	2.78	0.46
4:A:1506:LDA:H22	4:A:1506:LDA:H51	1.67	0.45
1:A:154:ARG:HE	1:A:362[B]:ARG:NH1	2.15	0.44

Continued on next page...

Continued from previous page...

Atom-1	Atom-2	Distance(Å)	Clash(Å)
4:A:1492:LDA:HM21	4:A:1492:LDA:H22	1.78	0.44
1:A:37[B]:GLU:OE1	1:A:37[B]:GLU:N	2.51	0.44
1:A:478:THR:HG22	6:A:1515:78M:H18	2.00	0.43
4:A:1493:LDA:H32	4:A:1493:LDA:H62	1.49	0.43
1:A:338:LYS:HE2	9:A:2188:HOH:O	2.18	0.43
1:A:159:GLN:O	8:A:1517:PE5:C5	2.68	0.41
1:A:195:ASP:HA	4:A:1496:LDA:HM13	2.02	0.41
1:A:215:TRP:CE3	4:A:1503:LDA:H21	2.56	0.41
1:A:68:ASP:HA	4:A:1493:LDA:H22	2.03	0.40
4:A:1497:LDA:H32	4:A:1500:LDA:H22	2.02	0.40
1:A:438:PHE:CZ	1:A:458[A]:ILE:HD13	2.55	0.40

All (1) symmetry-related close contacts are listed below. The label for Atom-2 includes the symmetry operator and encoded unit-cell translations to be applied.

Atom-1	Atom-2	Distance(Å)	Clash(Å)
1:A:303:GLN:NE2	1:A:303:GLN:NE2[2_655]	2.17	0.03

5.3 Torsion angles

5.3.1 Protein backbone ⓘ

In the following table, the Percentiles column shows the percent Ramachandran outliers of the chain as a percentile score with respect to all X-ray entries followed by that with respect to entries of similar resolution.

The Analysed column shows the number of residues for which the backbone conformation was analysed, and the total number of residues.

Mol	Chain	Analysed	Favoured	Allowed	Outliers	Percentiles	
1	A	432/458 (94%)	417 (96%)	15 (4%)	0	100	100

There are no Ramachandran outliers to report.

5.3.2 Protein sidechains ⓘ

In the following table, the Percentiles column shows the percent sidechain outliers of the chain as a percentile score with respect to all X-ray entries followed by that with respect to entries of similar resolution. The Analysed column shows the number of residues for which the sidechain conformation was analysed, and the total number of residues.

Mol	Chain	Analysed	Rotameric	Outliers	Percentiles	
1	A	356/370 (96%)	356 (100%)	0	100	100

There are no protein residues with a non-rotameric sidechain to report.

Some sidechains can be flipped to improve hydrogen bonding and reduce clashes. All (1) such sidechains are listed below:

Mol	Chain	Res	Type
1	A	416	ASN

5.3.3 RNA ⓘ

There are no RNA chains in this entry.

5.4 Non-standard residues in protein, DNA, RNA chains ⓘ

There are no non-standard protein/DNA/RNA residues in this entry.

5.5 Carbohydrates ⓘ

There are no carbohydrates in this entry.

5.6 Ligand geometry ⓘ

Of 27 ligands modelled in this entry, 3 are monoatomic - leaving 24 for Mogul analysis.

In the following table, the Counts columns list the number of bonds (or angles) for which Mogul statistics could be retrieved, the number of bonds (or angles) that are observed in the model and the number of bonds (or angles) that are defined in the chemical component dictionary. The Link column lists molecule types, if any, to which the group is linked. The Z score for a bond length (or angle) is the number of standard deviations the observed value is removed from the expected value. A bond length (or angle) with $|Z| > 2$ is considered an outlier worth inspection. RMSZ is the root-mean-square of all Z scores of the bond lengths (or angles).

Mol	Type	Chain	Res	Link	Bond lengths			Bond angles		
					Counts	RMSZ	# Z > 2	Counts	RMSZ	# Z > 2
3	FLC	A	1491	-	5,12,12	2.30	3 (60%)	7,17,17	1.28	1 (14%)
4	LDA	A	1492	-	15,15,15	1.90	1 (6%)	17,17,17	0.98	1 (5%)
4	LDA	A	1493	-	15,15,15	1.79	1 (6%)	17,17,17	0.73	0
4	LDA	A	1494	-	15,15,15	1.94	1 (6%)	17,17,17	0.44	0
4	LDA	A	1495	-	10,10,15	2.70	2 (20%)	12,12,17	0.42	0

Mol	Type	Chain	Res	Link	Bond lengths			Bond angles		
					Counts	RMSZ	# Z > 2	Counts	RMSZ	# Z > 2
4	LDA	A	1496	-	15,15,15	1.85	1 (6%)	17,17,17	0.61	0
4	LDA	A	1497	-	12,12,15	2.44	2 (16%)	14,14,17	0.77	0
4	LDA	A	1498	-	8,8,15	3.67	2 (25%)	7,7,17	0.46	0
4	LDA	A	1499	-	9,9,15	3.26	2 (22%)	8,8,17	0.57	0
4	LDA	A	1500	-	11,11,15	1.47	1 (9%)	10,10,17	0.57	0
4	LDA	A	1501	-	7,7,15	3.78	2 (28%)	6,6,17	0.58	0
4	LDA	A	1502	-	6,6,15	2.96	2 (33%)	5,5,17	0.40	0
4	LDA	A	1503	-	8,8,15	3.41	2 (25%)	7,7,17	0.64	0
4	LDA	A	1504	-	8,8,15	3.65	2 (25%)	7,7,17	0.64	0
4	LDA	A	1505	-	7,7,15	2.56	2 (28%)	6,6,17	0.46	0
4	LDA	A	1506	-	10,10,15	2.75	2 (20%)	9,9,17	0.53	0
6	78M	A	1510	-	21,21,21	0.86	1 (4%)	22,22,22	0.98	2 (9%)
7	78N	A	1511	-	21,21,21	0.96	1 (4%)	22,22,22	1.10	2 (9%)
6	78M	A	1512	-	21,21,21	1.00	1 (4%)	22,22,22	1.32	4 (18%)
7	78N	A	1513	-	21,21,21	0.96	1 (4%)	22,22,22	1.18	2 (9%)
7	78N	A	1514	-	21,21,21	0.99	1 (4%)	22,22,22	0.91	1 (4%)
6	78M	A	1515	-	21,21,21	0.98	1 (4%)	22,22,22	1.13	2 (9%)
8	PE5	A	1516	-	14,14,26	3.15	1 (7%)	12,13,25	1.32	1 (8%)
8	PE5	A	1517	-	6,7,26	0.47	0	5,6,25	1.72	3 (60%)

In the following table, the Chirals column lists the number of chiral outliers, the number of chiral centers analysed, the number of these observed in the model and the number defined in the chemical component dictionary. Similar counts are reported in the Torsion and Rings columns. '-' means no outliers of that kind were identified.

Mol	Type	Chain	Res	Link	Chirals	Torsions	Rings
3	FLC	A	1491	-	-	0/6/16/16	0/0/0/0
4	LDA	A	1492	-	-	0/13/13/13	0/0/0/0
4	LDA	A	1493	-	-	0/13/13/13	0/0/0/0
4	LDA	A	1494	-	-	0/13/13/13	0/0/0/0
4	LDA	A	1495	-	-	0/8/8/13	0/0/0/0
4	LDA	A	1496	-	-	0/13/13/13	0/0/0/0
4	LDA	A	1497	-	-	0/10/10/13	0/0/0/0
4	LDA	A	1498	-	-	0/6/6/13	0/0/0/0
4	LDA	A	1499	-	-	0/7/7/13	0/0/0/0
4	LDA	A	1500	-	-	0/9/9/13	0/0/0/0
4	LDA	A	1501	-	-	0/5/5/13	0/0/0/0
4	LDA	A	1502	-	-	0/4/4/13	0/0/0/0

Continued on next page...

Continued from previous page...

Mol	Type	Chain	Res	Link	Chirals	Torsions	Rings
4	LDA	A	1503	-	-	0/6/6/13	0/0/0/0
4	LDA	A	1504	-	-	0/6/6/13	0/0/0/0
4	LDA	A	1505	-	-	0/5/5/13	0/0/0/0
4	LDA	A	1506	-	-	0/8/8/13	0/0/0/0
6	78M	A	1510	-	-	0/21/21/21	0/0/0/0
7	78N	A	1511	-	-	0/21/21/21	0/0/0/0
6	78M	A	1512	-	-	0/21/21/21	0/0/0/0
7	78N	A	1513	-	-	0/21/21/21	0/0/0/0
7	78N	A	1514	-	-	0/21/21/21	0/0/0/0
6	78M	A	1515	-	-	0/21/21/21	0/0/0/0
8	PE5	A	1516	-	-	0/12/12/24	0/0/0/0
8	PE5	A	1517	-	-	0/5/5/24	0/0/0/0

All (35) bond length outliers are listed below:

Mol	Chain	Res	Type	Atoms	Z	Observed(Å)	Ideal(Å)
8	A	1516	PE5	C10-C9	-11.70	1.50	1.55
4	A	1504	LDA	C9-C8	-8.82	1.51	1.55
4	A	1498	LDA	C9-C8	-8.79	1.51	1.55
4	A	1501	LDA	C8-C7	-8.77	1.51	1.55
4	A	1503	LDA	C9-C8	-8.19	1.51	1.55
4	A	1499	LDA	C10-C9	-7.76	1.52	1.55
4	A	1506	LDA	C11-C10	-7.22	1.52	1.55
4	A	1495	LDA	O1-N1	7.16	1.46	1.39
4	A	1494	LDA	O1-N1	7.00	1.46	1.39
4	A	1492	LDA	O1-N1	6.85	1.46	1.39
4	A	1497	LDA	O1-N1	6.59	1.46	1.39
4	A	1496	LDA	O1-N1	6.58	1.46	1.39
4	A	1493	LDA	O1-N1	6.39	1.46	1.39
4	A	1499	LDA	C1-C2	-5.90	1.52	1.55
4	A	1502	LDA	C7-C6	-5.85	1.52	1.55
4	A	1498	LDA	C1-C2	-5.47	1.53	1.55
4	A	1504	LDA	C1-C2	-5.36	1.53	1.55
4	A	1503	LDA	C1-C2	-5.10	1.53	1.55
4	A	1505	LDA	C1-C2	-4.87	1.53	1.55
4	A	1500	LDA	C1-C2	-4.81	1.53	1.55
4	A	1501	LDA	C1-C2	-4.78	1.53	1.55
4	A	1506	LDA	C1-C2	-4.78	1.53	1.55
4	A	1505	LDA	C8-C7	-4.65	1.53	1.55
4	A	1497	LDA	C9-C8	-4.61	1.53	1.55
6	A	1512	78M	O2-C1	4.35	1.46	1.33
7	A	1514	78N	O16-C8	4.29	1.46	1.33

Continued on next page...

Continued from previous page...

Mol	Chain	Res	Type	Atoms	Z	Observed(Å)	Ideal(Å)
4	A	1502	LDA	C1-C2	-4.25	1.53	1.55
6	A	1515	78M	O2-C1	4.21	1.46	1.33
7	A	1511	78N	O16-C8	4.16	1.46	1.33
7	A	1513	78N	O16-C8	4.14	1.46	1.33
4	A	1495	LDA	C7-C6	-3.97	1.53	1.55
6	A	1510	78M	O2-C1	3.67	1.44	1.33
3	A	1491	FLC	CG-CB	-3.42	1.49	1.54
3	A	1491	FLC	CA-CB	-2.92	1.50	1.54
3	A	1491	FLC	OHB-CB	-2.42	1.39	1.43

All (19) bond angle outliers are listed below:

Mol	Chain	Res	Type	Atoms	Z	Observed(°)	Ideal(°)
6	A	1512	78M	O2-C1-C2	4.10	124.45	111.90
6	A	1515	78M	O2-C1-C2	3.43	122.41	111.90
7	A	1511	78N	O16-C8-C7	3.39	122.28	111.90
4	A	1492	LDA	C2-C1-N1	-3.19	108.31	113.80
7	A	1513	78N	O16-C8-C7	3.16	121.58	111.90
7	A	1514	78N	O16-C8-C7	2.95	120.92	111.90
3	A	1491	FLC	CB-CA-CAC	2.90	119.59	114.96
6	A	1510	78M	O2-C1-C2	2.58	119.79	111.90
7	A	1513	78N	C17-O16-C8	2.53	124.21	116.99
6	A	1515	78M	C17-O2-C1	2.35	123.70	116.99
6	A	1512	78M	C17-O2-C1	2.32	123.62	116.99
8	A	1517	PE5	O2-C2-C1	2.28	120.50	110.41
7	A	1511	78N	O16-C8-O15	-2.26	117.57	123.48
6	A	1512	78M	O2-C1-O1	-2.23	117.66	123.48
8	A	1516	PE5	C9-O5-C8	2.20	119.70	112.38
6	A	1510	78M	O2-C1-O1	-2.14	117.89	123.48
6	A	1512	78M	C3-C2-C1	-2.09	105.39	113.51
8	A	1517	PE5	O2-C3-C4	2.07	119.57	110.41
8	A	1517	PE5	O3-C4-C3	2.05	116.00	108.56

There are no chirality outliers.

There are no torsion outliers.

There are no ring outliers.

5.7 Other polymers ⓘ

There are no such residues in this entry.

5.8 Polymer linkage issues

There are no chain breaks in this entry.

6 Fit of model and data ⓘ

6.1 Protein, DNA and RNA chains ⓘ

In the following table, the column labelled ‘#RSRZ> 2’ contains the number (and percentage) of RSRZ outliers, followed by percent RSRZ outliers for the chain as percentile scores relative to all X-ray entries and entries of similar resolution. The OWAB column contains the minimum, median, 95th percentile and maximum values of the occupancy-weighted average B-factor per residue. The column labelled ‘Q< 0.9’ lists the number of (and percentage) of residues with an average occupancy less than 0.9.

Mol	Chain	Analysed	<RSRZ>	#RSRZ>2	OWAB(Å ²)	Q<0.9
1	A	430/458 (93%)	-0.22	15 (3%) 42 43	9, 17, 44, 99	0

All (15) RSRZ outliers are listed below:

Mol	Chain	Res	Type	RSRZ
1	A	117	ASP	5.6
1	A	62	PRO	5.3
1	A	63	GLY	4.8
1	A	295	ASP	4.4
1	A	293	VAL	4.2
1	A	39	PRO	4.1
1	A	294	ASP	3.9
1	A	296	ARG	3.8
1	A	37[A]	GLU	3.4
1	A	243	ASN	3.2
1	A	38	ALA	2.8
1	A	61	ALA	2.2
1	A	407	ASP	2.1
1	A	488	TRP	2.1
1	A	233	HIS	2.0

6.2 Non-standard residues in protein, DNA, RNA chains ⓘ

There are no non-standard protein/DNA/RNA residues in this entry.

6.3 Carbohydrates ⓘ

There are no carbohydrates in this entry.

6.4 Ligands ⓘ

In the following table, the Atoms column lists the number of modelled atoms in the group and the number defined in the chemical component dictionary. LLDF column lists the quality of electron density of the group with respect to its neighbouring residues in protein, DNA or RNA chains. The B-factors column lists the minimum, median, 95th percentile and maximum values of B factors of atoms in the group. The column labelled 'Q< 0.9' lists the number of atoms with occupancy less than 0.9.

Mol	Type	Chain	Res	Atoms	RSR	LLDF	B-factors(Å ²)	Q<0.9
7	78N	A	1514	22/22	0.17	7.56	36,46,53,56	0
6	78M	A	1515	22/22	0.18	7.21	38,47,53,55	0
4	LDA	A	1506	11/16	0.15	6.09	28,34,36,37	0
4	LDA	A	1493	16/16	0.21	5.12	34,49,70,71	0
4	LDA	A	1502	7/16	0.16	5.04	43,44,47,48	0
4	LDA	A	1495	11/16	0.22	4.85	35,46,63,63	0
4	LDA	A	1500	12/16	0.17	4.59	32,47,59,59	0
3	FLC	A	1491	13/13	0.18	4.23	22,34,55,55	0
4	LDA	A	1497	13/16	0.18	4.00	37,46,59,59	0
4	LDA	A	1494	16/16	0.18	3.83	40,49,61,62	0
8	PE5	A	1517	8/27	0.17	3.77	0,25,32,35	0
4	LDA	A	1504	9/16	0.12	3.68	36,39,41,41	0
7	78N	A	1513	22/22	0.19	3.63	41,52,60,65	0
4	LDA	A	1505	8/16	0.13	3.43	42,46,47,49	0
4	LDA	A	1501	8/16	0.13	3.42	39,45,53,54	0
4	LDA	A	1492	16/16	0.20	3.33	21,35,62,65	0
7	78N	A	1511	22/22	0.17	3.12	39,44,60,63	0
4	LDA	A	1496	16/16	0.17	3.09	21,45,52,57	0
5	NA	A	1508	1/1	0.15	2.86	32,32,32,32	0
6	78M	A	1512	22/22	0.17	2.61	44,49,58,61	0
4	LDA	A	1498	9/16	0.13	2.61	34,41,46,47	0
4	LDA	A	1499	10/16	0.14	2.17	49,51,53,54	0
4	LDA	A	1503	9/16	0.15	2.08	44,46,54,56	0
6	78M	A	1510	22/22	0.12	1.84	18,25,32,39	0
8	PE5	A	1516	15/27	0.09	0.32	20,27,43,47	0
2	CA	A	1509	1/1	0.23	0.15	62,62,62,62	0
5	NA	A	1507	1/1	0.06	-0.99	21,21,21,21	0

6.5 Other polymers ⓘ

There are no such residues in this entry.