



wwPDB X-ray Structure Validation Summary Report

Feb 28, 2014 – 02:35 AM GMT

PDB ID : 2AJI
Title : Crystal structure of the editing domain of E. coli leucyl-tRNA synthetase complexes with isoleucine
Authors : Liu, Y.; Liao, J.; Zhu, B.; Wang, E.D.; Ding, J.
Deposited on : 2005-08-02
Resolution : 3.20 Å(reported)

This is a wwPDB validation summary report for a publicly released PDB entry.

We welcome your comments at validation@mail.wwpdb.org

A user guide is available at <http://wwpdb.org/ValidationPDFNotes.html>

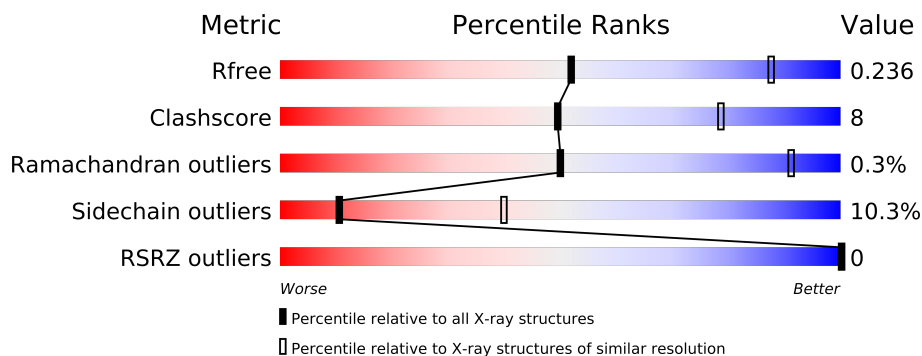
The following versions of software and data (see [references](#)) were used in the production of this report:

MolProbity	:	4.02b-467
Mogul	:	1.15 2013
Xtriage (Phenix)	:	dev-1323
EDS	:	stable22639
Percentile statistics	:	21963
Refmac	:	5.8.0049
CCP4	:	6.3.0 (Settle)
Ideal geometry (proteins)	:	Engh & Huber (2001)
Ideal geometry (DNA, RNA)	:	Parkinson et. al. (1996)
Validation Pipeline (wwPDB-VP)	:	stable22683

1 Overall quality at a glance

The reported resolution of this entry is 3.20 Å.

Percentile scores (ranging between 0-100) for global validation metrics of the entry are shown in the following graphic. The table shows the number of entries on which the scores are based.



Metric	Whole archive (#Entries)	Similar resolution (#Entries, resolution range(Å))
R_{free}	66092	1824 (3.30-3.10)
Clashscore	79885	1078 (3.26-3.14)
Ramachandran outliers	78287	1059 (3.26-3.14)
Sidechain outliers	78261	1058 (3.26-3.14)
RSRZ outliers	66119	1825 (3.30-3.10)

The table below summarises the geometric issues observed across the polymeric chains and their fit to the electron density. The red, orange, yellow and green segments on the lower bar indicate the fraction of residues that contain outliers for ≥ 3 , 2, 1 and 0 types of geometric quality criteria. The upper red bar (where present) indicates the fraction of residues that have poor fit to the electron density.

Mol	Chain	Length	Quality of chain
1	A	196	
1	B	196	

The following table lists non-polymeric compounds that are outliers for geometric or electron-density-fit criteria:

Mol	Type	Chain	Res	Geometry	Electron density
2	ILE	A	501	-	X
2	ILE	B	601	-	X

2 Entry composition

There are 2 unique types of molecules in this entry. The entry contains 2711 atoms, of which 0 are hydrogen and 0 are deuterium.

In the tables below, the ZeroOcc column contains the number of atoms modelled with zero occupancy, the AltConf column contains the number of residues with at least one atom in alternate conformation and the Trace column contains the number of residues modelled with at most 2 atoms.

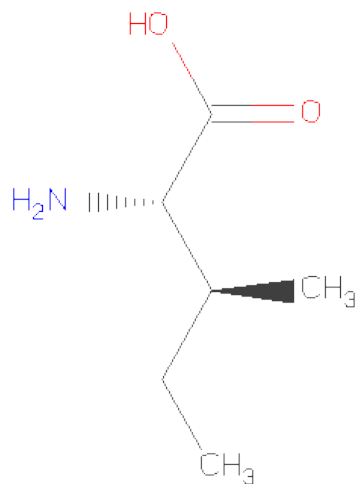
- Molecule 1 is a protein called Leucyl-tRNA synthetase.

Mol	Chain	Residues	Atoms					ZeroOcc	AltConf	Trace
1	A	186	Total	C	N	O	S	0	0	0
			1376	869	226	273	8			
1	B	175	Total	C	N	O	S	0	0	0
			1317	833	218	260	6			

There are 20 discrepancies between the modelled and reference sequences:

Chain	Residue	Modelled	Actual	Comment	Reference
A	218	MET	-	EXPRESSION TAG	UNP P07813
A	219	HIS	-	EXPRESSION TAG	UNP P07813
A	220	HIS	-	EXPRESSION TAG	UNP P07813
A	221	HIS	-	EXPRESSION TAG	UNP P07813
A	222	HIS	-	EXPRESSION TAG	UNP P07813
A	223	HIS	-	EXPRESSION TAG	UNP P07813
A	224	HIS	-	EXPRESSION TAG	UNP P07813
A	225	ALA	-	EXPRESSION TAG	UNP P07813
A	226	MET	-	EXPRESSION TAG	UNP P07813
A	227	GLY	-	EXPRESSION TAG	UNP P07813
B	218	MET	-	EXPRESSION TAG	UNP P07813
B	219	HIS	-	EXPRESSION TAG	UNP P07813
B	220	HIS	-	EXPRESSION TAG	UNP P07813
B	221	HIS	-	EXPRESSION TAG	UNP P07813
B	222	HIS	-	EXPRESSION TAG	UNP P07813
B	223	HIS	-	EXPRESSION TAG	UNP P07813
B	224	HIS	-	EXPRESSION TAG	UNP P07813
B	225	ALA	-	EXPRESSION TAG	UNP P07813
B	226	MET	-	EXPRESSION TAG	UNP P07813
B	227	GLY	-	EXPRESSION TAG	UNP P07813

- Molecule 2 is ISOLEUCINE (three-letter code: ILE) (formula: C₆H₁₃NO₂).



Mol	Chain	Residues	Atoms				ZeroOcc	AltConf
2	A	1	Total	C	N	O	0	0
			9	6	1	2		
2	B	1	Total	C	N	O	0	0
			9	6	1	2		

4 Data and refinement statistics

Property	Value	Source
Space group	P 63 2 2	Depositor
Cell constants a, b, c, α , β , γ	112.49Å 112.49Å 135.02Å 90.00° 90.00° 120.00°	Depositor
Resolution (Å)	20.00 – 3.20 97.42 – 3.20	Depositor EDS
% Data completeness (in resolution range)	87.8 (20.00-3.20) 87.6 (97.42-3.20)	Depositor EDS
R_{merge}	0.09	Depositor
R_{sym}	(Not available)	Depositor
$\langle I/\sigma(I) \rangle$ ¹	3.20 (at 3.19Å)	Xtriage
Refinement program	REFMAC 5.1.24	Depositor
R, R_{free}	0.232 , 0.284 0.231 , 0.236	Depositor DCC
R_{free} test set	410 reflections (5.60%)	DCC
Wilson B-factor (Å ²)	70.2	Xtriage
Anisotropy	0.312	Xtriage
Bulk solvent k_{sol} (e/Å ³), B_{sol} (Å ²)	0.35 , 26.9	EDS
Estimated twinning fraction	No twinning to report.	Xtriage
L-test for twinning	$\langle L \rangle = 0.50$, $\langle L^2 \rangle = 0.34$	Xtriage
Outliers	0 of 8816 reflections	Xtriage
F_o, F_c correlation	0.91	EDS
Total number of atoms	2711	wwPDB-VP
Average B, all atoms (Å ²)	55.0	wwPDB-VP

Xtriage's analysis on translational NCS is as follows: *The largest off-origin peak in the Patterson function is 4.32% of the height of the origin peak. No significant pseudotranslation is detected.*

¹Intensities estimated from amplitudes.

5 Model quality i

5.1 Standard geometry i

The Z score for a bond length (or angle) is the number of standard deviations the observed value is removed from the expected value. A bond length (or angle) with $|Z| > 5$ is considered an outlier worth inspection. RMSZ is the root-mean-square of all Z scores of the bond lengths (or angles).

Mol	Chain	Bond lengths		Bond angles	
		RMSZ	# Z >5	RMSZ	# Z >5
1	A	0.47	0/1404	0.77	8/1911 (0.4%)
1	B	0.50	0/1344	0.74	3/1825 (0.2%)
All	All	0.49	0/2748	0.75	11/3736 (0.3%)

There are no bond length outliers.

The worst 5 of 11 bond angle outliers are listed below:

Mol	Chain	Res	Type	Atoms	Z	Observed(°)	Ideal(°)
1	A	267	LEU	CA-CB-CG	7.35	132.21	115.30
1	B	345	ASP	CB-CG-OD2	6.06	123.76	118.30
1	A	391	ASP	CB-CG-OD2	6.00	123.70	118.30
1	A	251	ASP	CB-CG-OD2	5.88	123.60	118.30
1	B	283	ASP	CB-CG-OD2	5.71	123.44	118.30

There are no chirality outliers.

There are no planarity outliers.

5.2 Close contacts i

In the following table, the Non-H and H(model) columns list the number of non-hydrogen atoms and hydrogen atoms in the chain respectively. The H(added) column lists the number of hydrogens added by MolProbity. The Clashes column lists the number of clashes within the asymmetric unit, and the number in parentheses is this value normalized per 1000 atoms of the molecule in the chain. The Symm-Clashes column gives symmetry related clashes, in the same way as for the Clashes column.

Mol	Chain	Non-H	H(model)	H(added)	Clashes	Symm-Clashes
1	A	1376	0	1300	22	0
1	B	1317	0	1252	18	0
2	A	9	0	10	0	0
2	B	9	0	10	2	0
All	All	2711	0	2572	40	0

Clashscore is defined as the number of clashes calculated for the entry per 1000 atoms (including hydrogens) of the entry. The overall clashscore for this entry is 8.

The worst 5 of 40 close contacts within the same asymmetric unit are listed below.

Atom-1	Atom-2	Distance(Å)	Clash(Å)
1:A:324:ASN:HD22	1:A:324:ASN:N	1.85	0.72
1:B:314:THR:HG22	1:B:316:GLU:H	1.55	0.72
1:A:324:ASN:H	1:A:324:ASN:HD22	1.42	0.65
1:A:336:MET:CE	1:A:338:VAL:HG23	2.28	0.63
1:A:295:MET:HA	1:A:298:MET:HG2	1.80	0.62

There are no symmetry-related clashes.

5.3 Torsion angles

5.3.1 Protein backbone ⓘ

In the following table, the Percentiles column shows the percent Ramachandran outliers of the chain as a percentile score with respect to all X-ray entries followed by that with respect to entries of similar resolution. The Analysed column shows the number of residues for which the backbone conformation was analysed, and the total number of residues.

Mol	Chain	Analysed	Favoured	Allowed	Outliers	Percentiles	
1	A	184/196 (94%)	179 (97%)	5 (3%)	0	100	100
1	B	171/196 (87%)	160 (94%)	10 (6%)	1 (1%)	33	83
All	All	355/392 (91%)	339 (96%)	15 (4%)	1 (0%)	50	91

All (1) Ramachandran outliers are listed below:

Mol	Chain	Res	Type
1	B	362	ALA

5.3.2 Protein sidechains ⓘ

In the following table, the Percentiles column shows the percent sidechain outliers of the chain as a percentile score with respect to all X-ray entries followed by that with respect to entries of similar resolution. The Analysed column shows the number of residues for which the sidechain conformation was analysed, and the total number of residues.

Mol	Chain	Analysed	Rotameric	Outliers	Percentiles	
1	A	137/153 (90%)	122 (89%)	15 (11%)	9	37

Continued on next page...

Continued from previous page...

Mol	Chain	Analysed	Rotameric	Outliers	Percentiles	
1	B	133/153 (87%)	120 (90%)	13 (10%)	12	43
All	All	270/306 (88%)	242 (90%)	28 (10%)	10	39

5 of 28 residues with a non-rotameric sidechain are listed below:

Mol	Chain	Res	Type
1	A	376	THR
1	B	245	VAL
1	B	382	PHE
1	A	378	LYS
1	A	408	VAL

Some sidechains can be flipped to improve hydrogen bonding and reduce clashes. 5 of 6 such sidechains are listed below:

Mol	Chain	Res	Type
1	A	383	ASN
1	B	373	GLN
1	B	235	ASN
1	A	324	ASN
1	B	275	ASN

5.3.3 RNA ⓘ

There are no RNA chains in this entry.

5.4 Non-standard residues in protein, DNA, RNA chains ⓘ

There are no non-standard protein/DNA/RNA residues in this entry.

5.5 Carbohydrates ⓘ

There are no carbohydrates in this entry.

5.6 Ligand geometry ⓘ

2 ligands are modelled in this entry.

In the following table, the Counts columns list the number of bonds (or angles) for which Mogul statistics could be retrieved, the number of bonds (or angles) that are observed in the model and

the number of bonds (or angles) that are defined in the chemical component dictionary. The Link column lists molecule types, if any, to which the group is linked. The Z score for a bond length (or angle) is the number of standard deviations the observed value is removed from the expected value. A bond length (or angle) with $|Z| > 2$ is considered an outlier worth inspection. RMSZ is the root-mean-square of all Z scores of the bond lengths (or angles).

Mol	Type	Chain	Res	Link	Bond lengths			Bond angles		
					Counts	RMSZ	$\# Z > 2$	Counts	RMSZ	$\# Z > 2$
2	ILE	A	501	-	8,8,8	0.71	0	10,10,10	1.29	1 (10%)
2	ILE	B	601	-	8,8,8	0.80	0	10,10,10	0.78	0

In the following table, the Chirals column lists the number of chiral outliers, the number of chiral centers analysed, the number of these observed in the model and the number defined in the chemical component dictionary. Similar counts are reported in the Torsion and Rings columns. '-' means no outliers of that kind were identified.

Mol	Type	Chain	Res	Link	Chirals	Torsions	Rings
2	ILE	A	501	-	-	0/10/10/10	0/0/0/0
2	ILE	B	601	-	-	0/10/10/10	0/0/0/0

There are no bond length outliers.

All (1) bond angle outliers are listed below:

Mol	Chain	Res	Type	Atoms	Z	Observed(°)	Ideal(°)
2	A	501	ILE	CG2-CB-CG1	-2.08	106.45	111.90

There are no chirality outliers.

There are no torsion outliers.

There are no ring outliers.

5.7 Other polymers ⓘ

There are no such residues in this entry.

5.8 Polymer linkage issues

There are no chain breaks in this entry.

6 Fit of model and data ⓘ

6.1 Protein, DNA and RNA chains ⓘ

In the following table, the column labelled ‘#RSRZ> 2’ contains the number (and percentage) of RSRZ outliers, followed by percent RSRZ outliers for the chain as percentile scores relative to all X-ray entries and entries of similar resolution. The OWAB column contains the minimum, median, 95th percentile and maximum values of the occupancy-weighted average B-factor per residue. The column labelled ‘Q< 0.9’ lists the number of (and percentage) of residues with an average occupancy less than 0.9.

Mol	Chain	Analysed	<RSRZ>	#RSRZ>2	OWAB(Å ²)	Q<0.9
1	A	186/196 (94%)	-0.02	0 100 100	37, 49, 69, 71	0
1	B	175/196 (89%)	0.09	0 100 100	43, 57, 81, 85	0
All	All	361/392 (92%)	0.03	0 100 100	37, 54, 74, 85	0

There are no RSRZ outliers to report.

6.2 Non-standard residues in protein, DNA, RNA chains ⓘ

There are no non-standard protein/DNA/RNA residues in this entry.

6.3 Carbohydrates ⓘ

There are no carbohydrates in this entry.

6.4 Ligands ⓘ

In the following table, the Atoms column lists the number of modelled atoms in the group and the number defined in the chemical component dictionary. LLDF column lists the quality of electron density of the group with respect to its neighbouring residues in protein, DNA or RNA chains. The B-factors column lists the minimum, median, 95th percentile and maximum values of B factors of atoms in the group. The column labelled ‘Q< 0.9’ lists the number of atoms with occupancy less than 0.9.

Mol	Type	Chain	Res	Atoms	RSR	LLDF	B-factors(Å ²)	Q<0.9
2	ILE	A	501	9/9	0.35	3.18	38,39,40,41	0
2	ILE	B	601	9/9	0.36	2.07	39,40,41,42	0

6.5 Other polymers ⓘ

There are no such residues in this entry.