



Full wwPDB X-ray Structure Validation Report i

Feb 28, 2014 – 02:36 AM GMT

PDB ID : 2AJP
Title : Crystal structure of a human pyridoxal kinase
Authors : Ismail, S.; Dimov, S.; Atanassova, A.; Tempel, W.; Arrowsmith, C.; Edwards, A.; Sundstrom, M.; Weigelt, J.; Bochkarev, A.; Park, H.; Structural Genomics Consortium (SGC)
Deposited on : 2005-08-02
Resolution : 2.50 Å(reported)

This is a full wwPDB validation report for a publicly released PDB entry.
We welcome your comments at validation@mail.wwpdb.org
A user guide is available at <http://wwpdb.org/ValidationPDFNotes.html>

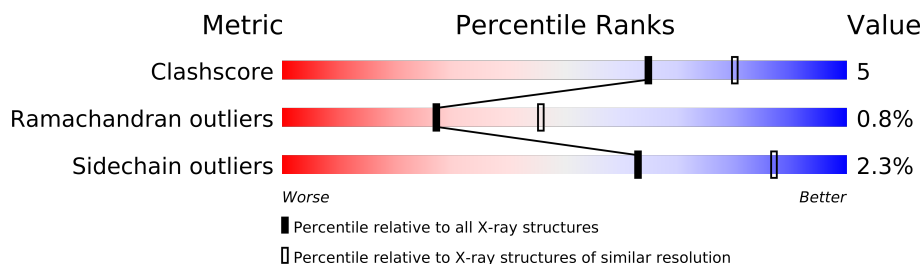
The following versions of software and data (see [references](#)) were used in the production of this report:

MolProbity	:	4.02b-467
Mogul	:	1.15 2013
Xtriage (Phenix)	:	dev-1323
EDS	:	FAILED
Percentile statistics	:	21963
Ideal geometry (proteins)	:	Engh & Huber (2001)
Ideal geometry (DNA, RNA)	:	Parkinson et. al. (1996)
Validation Pipeline (wwPDB-VP)	:	stable22683

1 Overall quality at a glance

The reported resolution of this entry is 2.50 Å.

Percentile scores (ranging between 0-100) for global validation metrics of the entry are shown in the following graphic. The table shows the number of entries on which the scores are based.



Metric	Whole archive (#Entries)	Similar resolution (#Entries, resolution range(Å))
Clashscore	79885	3562 (2.50-2.50)
Ramachandran outliers	78287	3480 (2.50-2.50)
Sidechain outliers	78261	3482 (2.50-2.50)

The table below summarises the geometric issues observed across the polymeric chains and their fit to the electron density. The red, orange, yellow and green segments on the lower bar indicate the fraction of residues that contain outliers for ≥ 3 , 2, 1 and 0 types of geometric quality criteria. The upper red bar (where present) indicates the fraction of residues that have poor fit to the electron density.

Note EDS failed to run properly.

Mol	Chain	Length	Quality of chain
1	A	326	
1	B	326	

2 Entry composition

There are 4 unique types of molecules in this entry. The entry contains 4693 atoms, of which 0 are hydrogen and 0 are deuterium.

In the tables below, the ZeroOcc column contains the number of atoms modelled with zero occupancy, the AltConf column contains the number of residues with at least one atom in alternate conformation and the Trace column contains the number of residues modelled with at most 2 atoms.

- Molecule 1 is a protein called Pyridoxal kinase.

Mol	Chain	Residues	Atoms					ZeroOcc	AltConf	Trace
1	A	303	Total	C	N	O	S	0	0	0
			2313	1469	392	438	14			
1	B	301	Total	C	N	O	S	0	0	0
			2276	1451	382	430	13			

There are 38 discrepancies between the modelled and reference sequences:

Chain	Residue	Modelled	Actual	Comment	Reference
A	-13	MET	-	CLONING ARTIFACT	UNP O00764
A	-12	GLY	-	CLONING ARTIFACT	UNP O00764
A	-11	SER	-	CLONING ARTIFACT	UNP O00764
A	-10	SER	-	CLONING ARTIFACT	UNP O00764
A	-9	HIS	-	EXPRESSION TAG	UNP O00764
A	-8	HIS	-	EXPRESSION TAG	UNP O00764
A	-7	HIS	-	EXPRESSION TAG	UNP O00764
A	-6	HIS	-	EXPRESSION TAG	UNP O00764
A	-5	HIS	-	EXPRESSION TAG	UNP O00764
A	-4	HIS	-	EXPRESSION TAG	UNP O00764
A	-3	SER	-	CLONING ARTIFACT	UNP O00764
A	-2	SER	-	CLONING ARTIFACT	UNP O00764
A	-1	GLY	-	CLONING ARTIFACT	UNP O00764
A	0	LEU	-	CLONING ARTIFACT	UNP O00764
A	1	VAL	-	CLONING ARTIFACT	UNP O00764
A	2	PRO	-	CLONING ARTIFACT	UNP O00764
A	3	ARG	-	CLONING ARTIFACT	UNP O00764
A	4	GLY	-	CLONING ARTIFACT	UNP O00764
A	5	SER	-	CLONING ARTIFACT	UNP O00764
B	-13	MET	-	CLONING ARTIFACT	UNP O00764
B	-12	GLY	-	CLONING ARTIFACT	UNP O00764
B	-11	SER	-	CLONING ARTIFACT	UNP O00764
B	-10	SER	-	CLONING ARTIFACT	UNP O00764
B	-9	HIS	-	EXPRESSION TAG	UNP O00764
B	-8	HIS	-	EXPRESSION TAG	UNP O00764

Continued on next page...

Continued from previous page...

Chain	Residue	Modelled	Actual	Comment	Reference
B	-7	HIS	-	EXPRESSION TAG	UNP O00764
B	-6	HIS	-	EXPRESSION TAG	UNP O00764
B	-5	HIS	-	EXPRESSION TAG	UNP O00764
B	-4	HIS	-	EXPRESSION TAG	UNP O00764
B	-3	SER	-	CLONING ARTIFACT	UNP O00764
B	-2	SER	-	CLONING ARTIFACT	UNP O00764
B	-1	GLY	-	CLONING ARTIFACT	UNP O00764
B	0	LEU	-	CLONING ARTIFACT	UNP O00764
B	1	VAL	-	CLONING ARTIFACT	UNP O00764
B	2	PRO	-	CLONING ARTIFACT	UNP O00764
B	3	ARG	-	CLONING ARTIFACT	UNP O00764
B	4	GLY	-	CLONING ARTIFACT	UNP O00764
B	5	SER	-	CLONING ARTIFACT	UNP O00764

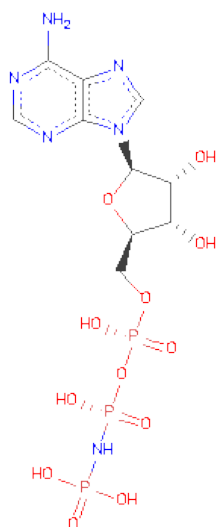
- Molecule 2 is MAGNESIUM ION (three-letter code: MG) (formula: Mg).

Mol	Chain	Residues	Atoms		ZeroOcc	AltConf
2	B	1	Total	Mg	0	0
			1	1		
2	A	1	Total	Mg	0	0
			1	1		

- Molecule 3 is UNKNOWN ATOM OR ION (three-letter code: UNX) (formula: X).

Mol	Chain	Residues	Atoms		ZeroOcc	AltConf
3	B	20	Total	X	0	0
			20	20		
3	A	20	Total	X	0	0
			20	20		

- Molecule 4 is PHOSPHOAMINOPHOSPHONICACID-ADENYLATE ESTER (three-letter code: ANP) (formula: C₁₀H₁₇N₆O₁₂P₃).



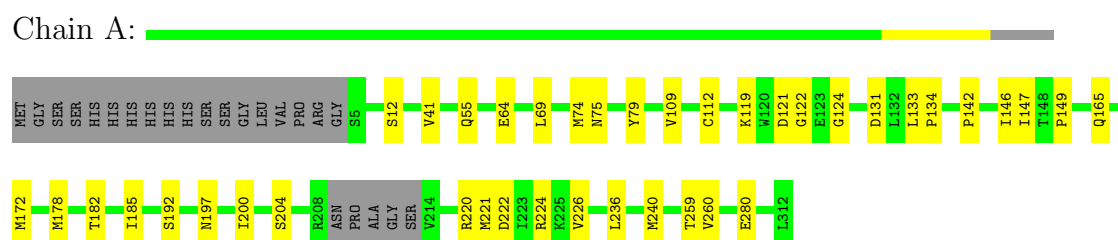
Mol	Chain	Residues	Atoms					ZeroOcc	AltConf
4	A	1	Total 31	C 10	N 6	O 12	P 3	0	0
4	B	1	Total 31	C 10	N 6	O 12	P 3	0	0

3 Residue-property plots

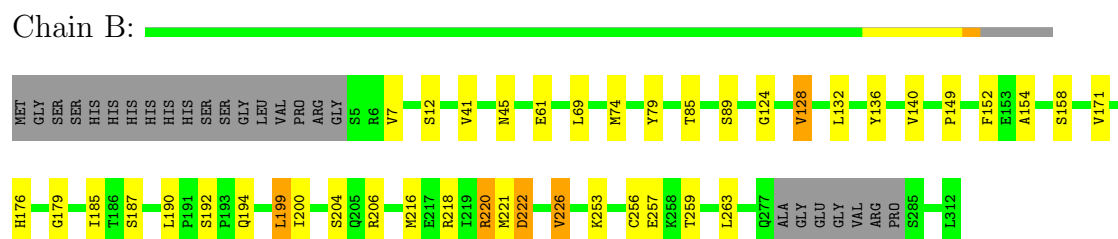
These plots are drawn for all protein, RNA and DNA chains in the entry. The first graphic for a chain summarises the proportions of errors displayed in the second graphic. The second graphic shows the sequence view annotated by issues in geometry and electron density. Residues are color-coded according to the number of geometric quality criteria for which they contain at least one outlier: green = 0, yellow = 1, orange = 2 and red = 3 or more. A red dot above a residue indicates a poor fit to the electron density ($RSRZ > 2$). Stretches of 2 or more consecutive residues without any outlier are shown as a green connector. Residues present in the sample, but not in the model, are shown in grey.

Note EDS failed to run properly.

- Molecule 1: Pyridoxal kinase



- Molecule 1: Pyridoxal kinase



4 Data and refinement statistics

EDS failed to run properly - this section will therefore be incomplete.

Property	Value	Source
Space group	I 2 2 2	Depositor
Cell constants a, b, c, α , β , γ	92.13Å 114.97Å 169.26Å 90.00° 90.00° 90.00°	Depositor
Resolution (Å)	46.08 – 2.50	Depositor
% Data completeness (in resolution range)	100.0 (46.08-2.50)	Depositor
R_{merge}	0.12	Depositor
R_{sym}	(Not available)	Depositor
$\langle I/\sigma(I) \rangle$ ¹	3.40 (at 2.51Å)	Xtriage
Refinement program	REFMAC 5.2.0005	Depositor
R, R_{free}	0.241 , 0.283	Depositor
Wilson B-factor (Å ²)	41.3	Xtriage
Anisotropy	0.235	Xtriage
Estimated twinning fraction	No twinning to report.	Xtriage
L-test for twinning	$\langle L \rangle = 0.50$, $\langle L^2 \rangle = 0.34$	Xtriage
Outliers	1 of 31250 reflections (0.003%)	Xtriage
Total number of atoms	4693	wwPDB-VP
Average B, all atoms (Å ²)	37.0	wwPDB-VP

Xtriage's analysis on translational NCS is as follows: *The largest off-origin peak in the Patterson function is 4.15% of the height of the origin peak. No significant pseudotranslation is detected.*

¹Intensities estimated from amplitudes.

5 Model quality

5.1 Standard geometry

Bond lengths and bond angles in the following residue types are not validated in this section: UNX, MG, ANP

The Z score for a bond length (or angle) is the number of standard deviations the observed value is removed from the expected value. A bond length (or angle) with $|Z| > 5$ is considered an outlier worth inspection. RMSZ is the root-mean-square of all Z scores of the bond lengths (or angles).

Mol	Chain	Bond lengths		Bond angles	
		RMSZ	# Z >5	RMSZ	# Z >5
1	A	0.76	0/2355	0.64	0/3204
1	B	0.75	0/2318	0.63	0/3157
All	All	0.76	0/4673	0.63	0/6361

There are no bond length outliers.

There are no bond angle outliers.

There are no chirality outliers.

There are no planarity outliers.

5.2 Close contacts

In the following table, the Non-H and H(model) columns list the number of non-hydrogen atoms and hydrogen atoms in the chain respectively. The H(added) column lists the number of hydrogens added by MolProbity. The Clashes column lists the number of clashes within the asymmetric unit, and the number in parentheses is this value normalized per 1000 atoms of the molecule in the chain. The Symm-Clashes column gives symmetry related clashes, in the same way as for the Clashes column.

Mol	Chain	Non-H	H(model)	H(added)	Clashes	Symm-Clashes
1	A	2313	0	2258	26	0
1	B	2276	0	2201	23	0
2	A	1	0	0	0	0
2	B	1	0	0	0	0
3	A	20	0	0	0	0
3	B	20	0	0	0	0
4	A	31	0	13	1	0
4	B	31	0	13	1	0
All	All	4693	0	4485	48	0

Clashscore is defined as the number of clashes calculated for the entry per 1000 atoms (including hydrogens) of the entry. The overall clashscore for this entry is 5.

All (48) close contacts within the same asymmetric unit are listed below.

Atom-1	Atom-2	Distance(Å)	Clash(Å)
1:B:187:SER:HB2	1:B:199:LEU:HD11	1.62	0.81
1:B:226:VAL:H	4:B:1501:ANP:HN61	1.32	0.77
1:B:12:SER:HB2	1:B:41:VAL:HG22	1.67	0.77
1:B:192:SER:HB2	1:B:200:ILE:HD11	1.77	0.65
1:B:204:SER:HB2	1:B:218:ARG:HG2	1.79	0.64
1:A:69:LEU:HD23	1:A:74:MET:HE3	1.81	0.63
1:B:187:SER:CB	1:B:199:LEU:HD11	2.28	0.63
1:A:172:MET:CE	1:A:204:SER:HB2	2.30	0.61
1:B:154:ALA:O	1:B:158:SER:HB2	2.01	0.60
1:B:149:PRO:O	1:B:185:ILE:HA	2.06	0.56
1:B:12:SER:HB2	1:B:41:VAL:CG2	2.36	0.56
1:A:133:LEU:HB3	1:A:134:PRO:HD3	1.89	0.54
1:B:206:ARG:HH11	1:B:216:MET:HE3	1.72	0.54
1:A:172:MET:HE2	1:A:204:SER:HB2	1.92	0.52
1:B:253:LYS:O	1:B:257:GLU:HG3	2.09	0.52
1:B:128:VAL:HG13	1:B:132:LEU:HD22	1.91	0.51
1:A:172:MET:SD	1:A:185:ILE:HD12	2.52	0.50
1:A:146:ILE:HG12	1:A:182:THR:HB	1.94	0.49
1:B:176:HIS:NE2	1:B:204:SER:OG	2.31	0.48
1:A:79:TYR:CD2	1:A:109:VAL:HB	2.48	0.48
1:A:197:ASN:ND2	1:A:224:ARG:CD	2.77	0.48
1:A:226:VAL:H	4:A:501:ANP:HN61	1.62	0.47
1:A:192:SER:HB2	1:A:200:ILE:HD11	1.95	0.47
1:A:142:PRO:HA	1:A:178:MET:O	2.14	0.47
1:A:220:ARG:NH1	1:A:222:ASP:OD2	2.48	0.47
1:A:236:LEU:HD11	1:A:240:MET:CE	2.45	0.46
1:B:136:TYR:HA	1:B:140:VAL:HB	1.97	0.46
1:A:112:CYS:O	1:A:147:ILE:HA	2.15	0.46
1:A:119:LYS:HA	1:A:124:GLY:HA2	1.98	0.45
1:A:240:MET:HB3	1:A:259:THR:HG23	1.99	0.45
1:A:131:ASP:O	1:A:134:PRO:HD2	2.17	0.45
1:B:220:ARG:HD3	1:B:222:ASP:OD1	2.17	0.44
1:A:236:LEU:CD1	1:A:240:MET:CE	2.95	0.44
1:B:221:MET:CE	1:B:256:CYS:HB3	2.49	0.43
1:A:12:SER:HB2	1:A:41:VAL:HG22	2.01	0.43
1:A:55:GLN:NE2	1:B:61:GLU:HB3	2.34	0.42
1:B:124:GLY:HA3	1:B:152:PHE:CE1	2.54	0.42
1:A:69:LEU:HD23	1:A:74:MET:CE	2.48	0.42
1:A:165:GLN:O	1:A:165:GLN:HG2	2.20	0.42

Continued on next page...

Continued from previous page...

Atom-1	Atom-2	Distance(Å)	Clash(Å)
1:B:69:LEU:HD23	1:B:74:MET:CE	2.49	0.42
1:B:158:SER:OG	1:B:171:VAL:HG22	2.20	0.42
1:A:220:ARG:NH1	1:A:222:ASP:OD1	2.53	0.42
1:A:221:MET:CE	1:A:260:VAL:HG21	2.50	0.42
1:B:74:MET:HB2	1:B:74:MET:HE2	1.83	0.42
1:A:149:PRO:O	1:A:185:ILE:HA	2.21	0.41
1:B:259:THR:O	1:B:263:LEU:HD23	2.21	0.41
1:B:7:VAL:HG22	1:B:79:TYR:HB2	2.03	0.41
1:A:236:LEU:HD11	1:A:240:MET:HE1	2.03	0.40

There are no symmetry-related clashes.

5.3 Torsion angles

5.3.1 Protein backbone ⓘ

In the following table, the Percentiles column shows the percent Ramachandran outliers of the chain as a percentile score with respect to all X-ray entries followed by that with respect to entries of similar resolution. The Analysed column shows the number of residues for which the backbone conformation was analysed, and the total number of residues.

Mol	Chain	Analysed	Favoured	Allowed	Outliers	Percentiles	
1	A	299/326 (92%)	286 (96%)	10 (3%)	3 (1%)	22	38
1	B	297/326 (91%)	284 (96%)	11 (4%)	2 (1%)	30	50
All	All	596/652 (91%)	570 (96%)	21 (4%)	5 (1%)	27	46

All (5) Ramachandran outliers are listed below:

Mol	Chain	Res	Type
1	A	121	ASP
1	A	75	ASN
1	B	190	LEU
1	B	179	GLY
1	A	122	GLY

5.3.2 Protein sidechains ⓘ

In the following table, the Percentiles column shows the percent sidechain outliers of the chain as a percentile score with respect to all X-ray entries followed by that with respect to entries of similar resolution. The Analysed column shows the number of residues for which the sidechain

conformation was analysed, and the total number of residues.

Mol	Chain	Analysed	Rotameric	Outliers	Percentiles	
1	A	247/286 (86%)	245 (99%)	2 (1%)	89	98
1	B	238/286 (83%)	229 (96%)	9 (4%)	44	71
All	All	485/572 (85%)	474 (98%)	11 (2%)	63	87

All (11) residues with a non-rotameric sidechain are listed below:

Mol	Chain	Res	Type
1	A	64	GLU
1	A	280	GLU
1	B	45	ASN
1	B	85	THR
1	B	89	SER
1	B	128	VAL
1	B	194	GLN
1	B	199	LEU
1	B	220	ARG
1	B	222	ASP
1	B	226	VAL

Some sidechains can be flipped to improve hydrogen bonding and reduce clashes. All (1) such sidechains are listed below:

Mol	Chain	Res	Type
1	A	104	GLN

5.3.3 RNA ⓘ

There are no RNA chains in this entry.

5.4 Non-standard residues in protein, DNA, RNA chains ⓘ

There are no non-standard protein/DNA/RNA residues in this entry.

5.5 Carbohydrates ⓘ

There are no carbohydrates in this entry.

5.6 Ligand geometry

Of 44 ligands modelled in this entry, 40 are unknown and 2 are monoatomic - leaving 2 for Mogul analysis.

In the following table, the Counts columns list the number of bonds (or angles) for which Mogul statistics could be retrieved, the number of bonds (or angles) that are observed in the model and the number of bonds (or angles) that are defined in the chemical component dictionary. The Link column lists molecule types, if any, to which the group is linked. The Z score for a bond length (or angle) is the number of standard deviations the observed value is removed from the expected value. A bond length (or angle) with $|Z| > 2$ is considered an outlier worth inspection. RMSZ is the root-mean-square of all Z scores of the bond lengths (or angles).

Mol	Type	Chain	Res	Link	Bond lengths			Bond angles		
					Counts	RMSZ	# Z > 2	Counts	RMSZ	# Z > 2
4	ANP	A	501	2	33,33,33	4.28	9 (27%)	51,52,52	2.50	13 (25%)
4	ANP	B	1501	2	33,33,33	3.95	8 (24%)	51,52,52	2.99	13 (25%)

In the following table, the Chirals column lists the number of chiral outliers, the number of chiral centers analysed, the number of these observed in the model and the number defined in the chemical component dictionary. Similar counts are reported in the Torsion and Rings columns. '-' means no outliers of that kind were identified.

Mol	Type	Chain	Res	Link	Chirals	Torsions	Rings
4	ANP	A	501	2	-	0/18/38/38	0/1/3/3
4	ANP	B	1501	2	-	1/18/38/38	0/1/3/3

All (17) bond length outliers are listed below:

Mol	Chain	Res	Type	Atoms	Z	Observed(Å)	Ideal(Å)
4	A	501	ANP	PG-N3B	16.03	1.78	1.64
4	B	1501	ANP	PG-N3B	15.78	1.78	1.64
4	A	501	ANP	PB-N3B	13.62	1.76	1.64
4	B	1501	ANP	PG-O1G	9.99	1.58	1.46
4	B	1501	ANP	PB-N3B	9.24	1.72	1.64
4	A	501	ANP	PG-O1G	8.25	1.56	1.46
4	A	501	ANP	C4-N9	-4.77	1.30	1.37
4	B	1501	ANP	PB-O1B	4.39	1.51	1.46
4	B	1501	ANP	C5-C4	3.83	1.49	1.40
4	A	501	ANP	PB-O1B	3.80	1.50	1.46
4	B	1501	ANP	C4-N9	-3.77	1.32	1.37
4	A	501	ANP	C5-C4	3.30	1.47	1.40
4	A	501	ANP	PB-O3A	2.56	1.62	1.59
4	A	501	ANP	O4'-C1'	2.39	1.45	1.41
4	B	1501	ANP	C2-N1	2.33	1.38	1.33

Continued on next page...

Continued from previous page...

Mol	Chain	Res	Type	Atoms	Z	Observed(Å)	Ideal(Å)
4	A	501	ANP	C8-N9	2.13	1.39	1.36
4	B	1501	ANP	C2-N3	2.11	1.36	1.32

All (26) bond angle outliers are listed below:

Mol	Chain	Res	Type	Atoms	Z	Observed(°)	Ideal(°)
4	B	1501	ANP	O4'-C1'-N9	10.78	118.47	108.44
4	A	501	ANP	O4'-C1'-N9	9.46	117.24	108.44
4	B	1501	ANP	PB-N3B-PG	-9.27	114.47	130.07
4	A	501	ANP	N3-C2-N1	-9.03	121.16	128.71
4	B	1501	ANP	O1B-PB-N3B	-7.82	100.01	111.83
4	B	1501	ANP	N3-C2-N1	-6.51	123.26	128.71
4	A	501	ANP	PB-N3B-PG	-5.45	120.91	130.07
4	B	1501	ANP	N3-C4-N9	5.24	134.89	125.43
4	B	1501	ANP	O2B-PB-O1B	3.91	118.92	109.89
4	A	501	ANP	O2B-PB-O1B	3.90	118.89	109.89
4	B	1501	ANP	O2B-PB-N3B	3.85	117.05	106.61
4	A	501	ANP	N3-C4-N9	3.54	131.83	125.43
4	B	1501	ANP	C3'-C2'-C1'	3.31	106.08	100.91
4	B	1501	ANP	C2'-C1'-N9	-3.28	104.84	113.27
4	A	501	ANP	C3'-C2'-C1'	3.22	105.94	100.91
4	A	501	ANP	O3G-PG-O2G	3.14	116.67	107.66
4	A	501	ANP	C4'-O4'-C1'	-3.10	106.39	109.75
4	B	1501	ANP	O2G-PG-O1G	-2.96	106.00	113.60
4	A	501	ANP	O2'-C2'-C1'	-2.80	102.75	111.23
4	B	1501	ANP	N6-C6-N1	2.63	124.53	119.36
4	B	1501	ANP	PA-O3A-PB	-2.59	122.97	131.81
4	B	1501	ANP	C5-C4-N3	-2.57	120.11	125.70
4	A	501	ANP	PA-O3A-PB	-2.49	123.29	131.81
4	A	501	ANP	C2-N3-C4	2.32	120.61	114.01
4	A	501	ANP	C2-N1-C6	2.15	122.66	118.77
4	A	501	ANP	O1G-PG-N3B	-2.13	108.60	111.83

There are no chirality outliers.

All (1) torsion outliers are listed below:

Mol	Chain	Res	Type	Atoms
4	B	1501	ANP	O1G-PG-N3B-PB

There are no ring outliers.

5.7 Other polymers ⓘ

There are no such residues in this entry.

5.8 Polymer linkage issues

There are no chain breaks in this entry.

6 Fit of model and data ⓘ

6.1 Protein, DNA and RNA chains ⓘ

EDS failed to run properly - this section will therefore be empty.

6.2 Non-standard residues in protein, DNA, RNA chains ⓘ

EDS failed to run properly - this section will therefore be empty.

6.3 Carbohydrates ⓘ

EDS failed to run properly - this section will therefore be empty.

6.4 Ligands ⓘ

EDS failed to run properly - this section will therefore be empty.

6.5 Other polymers ⓘ

EDS failed to run properly - this section will therefore be empty.