



# Full wwPDB X-ray Structure Validation Report

Feb 27, 2014 – 02:35 AM GMT

PDB ID : 4AJE  
Title : rat LDHA in complex with 2-(4-bromophenoxy)propanedioicacid  
Authors : Tucker, J.A.; Brassington, C.; Hassall, G.; Vogtherr, M.; Ward, R.; Tart, J.;  
Davies, G.; Pearson, S.  
Deposited on : 2012-02-16  
Resolution : 2.35 Å(reported)

This is a full wwPDB validation report for a publicly released PDB entry.  
We welcome your comments at [validation@mail.wwpdb.org](mailto:validation@mail.wwpdb.org)  
A user guide is available at <http://wwpdb.org/ValidationPDFNotes.html>

---

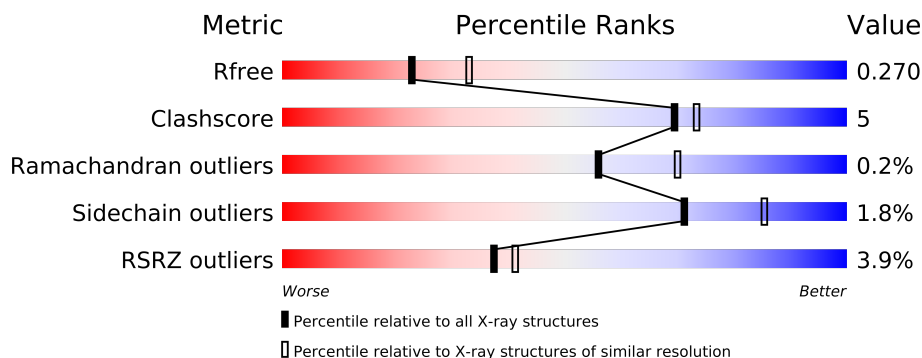
The following versions of software and data (see [references](#)) were used in the production of this report:

MolProbity : 4.02b-467  
Mogul : 1.15 2013  
Xtriage (Phenix) : dev-1323  
EDS : stable22639  
Percentile statistics : 21963  
Refmac : 5.8.0049  
CCP4 : 6.3.0 (Settle)  
Ideal geometry (proteins) : Engh & Huber (2001)  
Ideal geometry (DNA, RNA) : Parkinson et. al. (1996)  
Validation Pipeline (wwPDB-VP) : stable22683

# 1 Overall quality at a glance

The reported resolution of this entry is 2.35 Å.

Percentile scores (ranging between 0-100) for global validation metrics of the entry are shown in the following graphic. The table shows the number of entries on which the scores are based.



Metric	Whole archive (#Entries)	Similar resolution (#Entries, resolution range(Å))
$R_{free}$	66092	3327 (2.40-2.32)
Clashscore	79885	1064 (2.38-2.34)
Ramachandran outliers	78287	1048 (2.38-2.34)
Sidechain outliers	78261	1049 (2.38-2.34)
RSRZ outliers	66119	3330 (2.40-2.32)

The table below summarises the geometric issues observed across the polymeric chains and their fit to the electron density. The red, orange, yellow and green segments on the lower bar indicate the fraction of residues that contain outliers for  $\geq 3$ , 2, 1 and 0 types of geometric quality criteria. The upper red bar (where present) indicates the fraction of residues that have poor fit to the electron density.

Mol	Chain	Length	Quality of chain
1	A	331	
1	B	331	
1	C	331	
1	D	331	

The following table lists non-polymeric compounds that are outliers for geometric or electron-density-fit criteria:

Mol	Type	Chain	Res	Geometry	Electron density
4	GOL	B	1332	-	X
4	GOL	C	1332	-	X
4	GOL	D	1332	-	X

## 2 Entry composition i

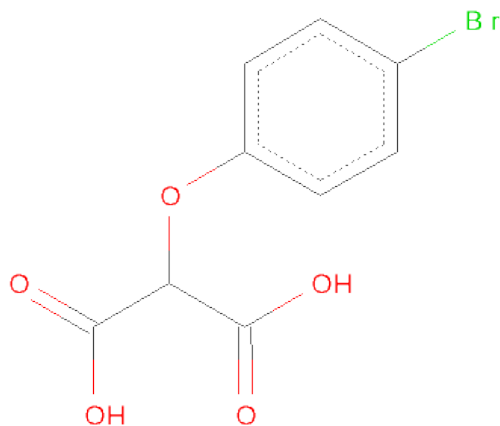
There are 5 unique types of molecules in this entry. The entry contains 10872 atoms, of which 0 are hydrogen and 0 are deuterium.

In the tables below, the ZeroOcc column contains the number of atoms modelled with zero occupancy, the AltConf column contains the number of residues with at least one atom in alternate conformation and the Trace column contains the number of residues modelled with at most 2 atoms.

- Molecule 1 is a protein called L-LACTATE DEHYDROGENASE A CHAIN.

Mol	Chain	Residues	Atoms					ZeroOcc	AltConf	Trace
1	A	327	Total	C	N	O	S	0	1	0
			2481	1587	419	463	12			
1	B	330	Total	C	N	O	S	0	3	0
			2529	1616	428	473	12			
1	C	330	Total	C	N	O	S	0	3	0
			2525	1614	426	473	12			
1	D	330	Total	C	N	O	S	0	4	0
			2519	1610	423	473	13			

- Molecule 2 is 2-(4-BROMANYLPHENOXY)PROPANEDIOICACID (three-letter code: 2B4) (formula: C<sub>9</sub>H<sub>7</sub>BrO<sub>5</sub>).



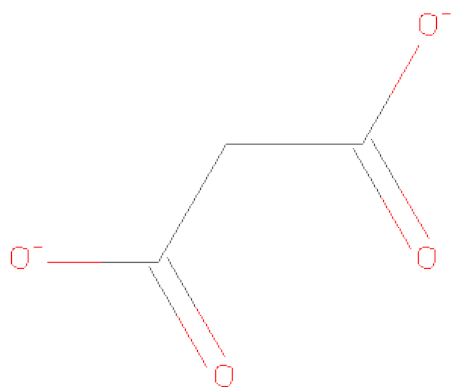
Mol	Chain	Residues	Atoms				ZeroOcc	AltConf
2	A	1	Total	Br	C	O	0	0
			15	1	9	5		
2	B	1	Total	Br	C	O	0	0
			15	1	9	5		

*Continued on next page...*

*Continued from previous page...*

Mol	Chain	Residues	Atoms				ZeroOcc	AltConf
2	C	1	Total	Br	C	O	0	0
			15	1	9	5		
2	D	1	Total	Br	C	O	0	0
			15	1	9	5		

- Molecule 3 is MALONATE ION (three-letter code: MLI) (formula:  $C_3H_2O_4$ ).



Mol	Chain	Residues	Atoms			ZeroOcc	AltConf
3	A	1	Total	C	O	0	0
			7	3	4		
3	A	1	Total	C	O	0	0
			7	3	4		
3	A	1	Total	C	O	0	0
			7	3	4		
3	B	1	Total	C	O	0	0
			7	3	4		
3	C	1	Total	C	O	0	0
			7	3	4		

- Molecule 4 is GLYCEROL (three-letter code: GOL) (formula:  $C_3H_8O_3$ ).



Mol	Chain	Residues	Atoms			ZeroOcc	AltConf
4	B	1	Total	C	O	0	0
			6	3	3		
4	C	1	Total	C	O	0	0
			6	3	3		
4	D	1	Total	C	O	0	0
			6	3	3		

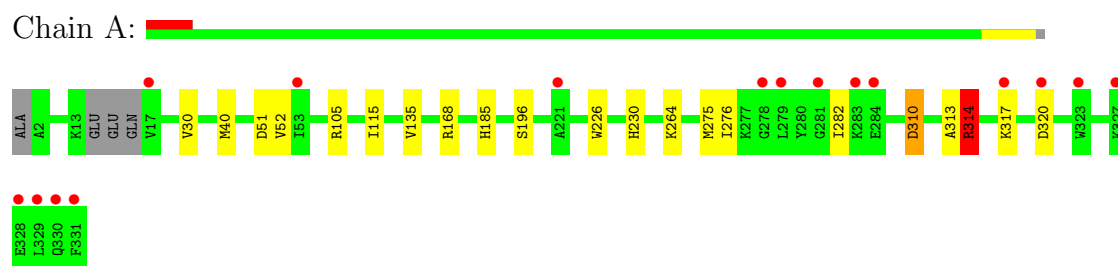
- Molecule 5 is water.

Mol	Chain	Residues	Atoms		ZeroOcc	AltConf
5	A	197	Total	O	0	0
			197	197		
5	B	215	Total	O	0	0
			215	215		
5	C	172	Total	O	0	0
			172	172		
5	D	121	Total	O	0	0
			121	121		

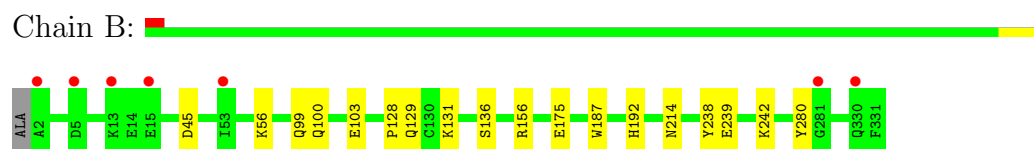
### 3 Residue-property plots

These plots are drawn for all protein, RNA and DNA chains in the entry. The first graphic for a chain summarises the proportions of errors displayed in the second graphic. The second graphic shows the sequence view annotated by issues in geometry and electron density. Residues are color-coded according to the number of geometric quality criteria for which they contain at least one outlier: green = 0, yellow = 1, orange = 2 and red = 3 or more. A red dot above a residue indicates a poor fit to the electron density ( $RSRZ > 2$ ). Stretches of 2 or more consecutive residues without any outlier are shown as a green connector. Residues present in the sample, but not in the model, are shown in grey.

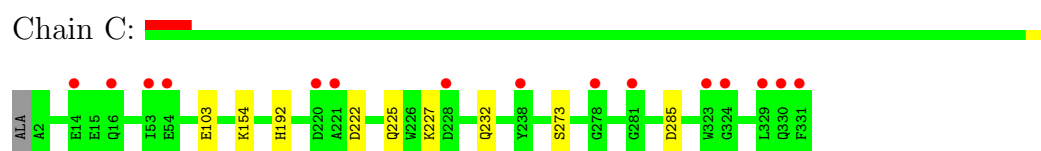
#### • Molecule 1: L-LACTATE DEHYDROGENASE A CHAIN



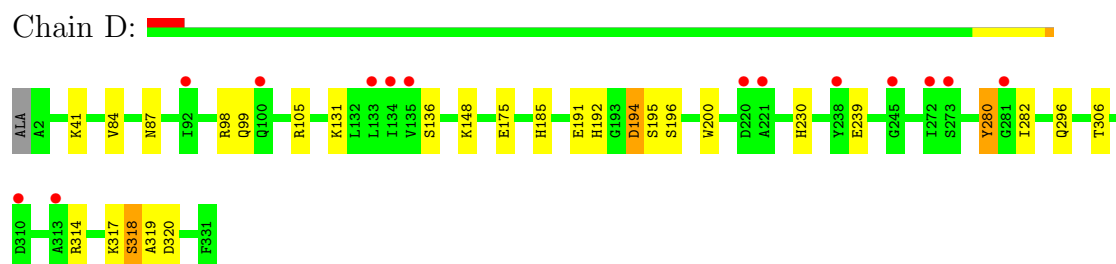
#### • Molecule 1: L-LACTATE DEHYDROGENASE A CHAIN



#### • Molecule 1: L-LACTATE DEHYDROGENASE A CHAIN



#### • Molecule 1: L-LACTATE DEHYDROGENASE A CHAIN



## 4 Data and refinement statistics

Property	Value	Source
Space group	P 1 21 1	Depositor
Cell constants a, b, c, $\alpha$ , $\beta$ , $\gamma$	62.30Å 82.51Å 129.11Å 90.00° 96.19° 90.00°	Depositor
Resolution (Å)	28.99 – 2.35 28.99 – 2.35	Depositor EDS
% Data completeness (in resolution range)	99.0 (28.99-2.35) 99.0 (28.99-2.35)	Depositor EDS
$R_{merge}$	0.09	Depositor
$R_{sym}$	(Not available)	Depositor
$\langle I/\sigma(I) \rangle$ <sup>1</sup>	2.88 (at 2.36Å)	Xtriage
Refinement program	REFMAC 5.6.0117	Depositor
R, $R_{free}$	0.202 , 0.272 0.202 , 0.270	Depositor DCC
$R_{free}$ test set	2732 reflections (5.35%)	DCC
Wilson B-factor (Å <sup>2</sup> )	33.7	Xtriage
Anisotropy	0.084	Xtriage
Bulk solvent $k_{sol}$ (e/Å <sup>3</sup> ), $B_{sol}$ (Å <sup>2</sup> )	0.36 , 34.4	EDS
Estimated twinning fraction	No twinning to report.	Xtriage
L-test for twinning	$\langle  L  \rangle = 0.54$ , $\langle L^2 \rangle = 0.38$	Xtriage
Outliers	1 of 53806 reflections (0.002%)	Xtriage
$F_o, F_c$ correlation	0.94	EDS
Total number of atoms	10872	wwPDB-VP
Average B, all atoms (Å <sup>2</sup> )	31.0	wwPDB-VP

Xtriage's analysis on translational NCS is as follows: *The largest off-origin peak in the Patterson function is 4.45% of the height of the origin peak. No significant pseudotranslation is detected.*

<sup>1</sup>Intensities estimated from amplitudes.

## 5 Model quality ⓘ

### 5.1 Standard geometry ⓘ

Bond lengths and bond angles in the following residue types are not validated in this section: GOL, 2B4, MLI

The Z score for a bond length (or angle) is the number of standard deviations the observed value is removed from the expected value. A bond length (or angle) with  $|Z| > 5$  is considered an outlier worth inspection. RMSZ is the root-mean-square of all Z scores of the bond lengths (or angles).

Mol	Chain	Bond lengths		Bond angles	
		RMSZ	# Z  >5	RMSZ	# Z  >5
1	A	0.70	1/2523 (0.0%)	0.79	2/3427 (0.1%)
1	B	0.70	1/2572 (0.0%)	0.77	1/3492 (0.0%)
1	C	0.67	0/2568	0.73	0/3487
1	D	0.66	1/2562 (0.0%)	0.74	0/3483
All	All	0.68	3/10225 (0.0%)	0.76	3/13889 (0.0%)

All (3) bond length outliers are listed below:

Mol	Chain	Res	Type	Atoms	Z	Observed(Å)	Ideal(Å)
1	B	187	TRP	CD2-CE2	5.39	1.47	1.41
1	A	226	TRP	CD2-CE2	5.05	1.47	1.41
1	D	200	TRP	CD2-CE2	5.05	1.47	1.41

All (3) bond angle outliers are listed below:

Mol	Chain	Res	Type	Atoms	Z	Observed(°)	Ideal(°)
1	A	40	MET	CA-CB-CG	-6.55	102.16	113.30
1	A	314	ARG	NE-CZ-NH1	6.12	123.36	120.30
1	B	45	ASP	CB-CG-OD1	5.11	122.90	118.30

There are no chirality outliers.

There are no planarity outliers.

### 5.2 Close contacts ⓘ

In the following table, the Non-H and H(model) columns list the number of non-hydrogen atoms and hydrogen atoms in the chain respectively. The H(added) column lists the number of hydrogens added by MolProbity. The Clashes column lists the number of clashes within the asymmetric unit, and the number in parentheses is this value normalized per 1000 atoms of the molecule in the



chain. The Symm-Clashes column gives symmetry related clashes, in the same way as for the Clashes column.

Mol	Chain	Non-H	H(model)	H(added)	Clashes	Symm-Clashes
1	A	2481	0	0	14	0
1	B	2529	0	0	11	0
1	C	2525	0	0	6	0
1	D	2519	0	0	13	0
2	A	15	0	4	5	0
2	B	15	0	5	1	0
2	C	15	0	5	1	0
2	D	15	0	5	3	0
3	A	21	0	5	3	0
3	B	7	0	2	0	0
3	C	7	0	2	0	0
4	B	6	0	8	0	0
4	C	6	0	8	0	0
4	D	6	0	8	0	0
5	A	197	0	0	3	0
5	B	215	0	0	5	0
5	C	172	0	0	4	0
5	D	121	0	0	5	0
All	All	10872	0	52	48	0

Clashscore is defined as the number of clashes calculated for the entry per 1000 atoms (including hydrogens) of the entry. The overall clashscore for this entry is 5.

All (48) close contacts within the same asymmetric unit are listed below.

Atom-1	Atom-2	Distance(Å)	Clash(Å)
1:D:280:TYR:OH	5:D:2100:HOH:O	1.97	0.82
1:D:192:HIS:NE2	2:D:1333:2B4:O14	2.13	0.82
1:C:232:GLN:NE2	5:C:2140:HOH:O	2.11	0.81
1:A:105:ARG:NE	2:A:1332:2B4:O11	2.15	0.79
1:D:194:ASP:OD1	1:D:194:ASP:N	2.28	0.67
1:A:310:ASP:N	1:A:310:ASP:OD1	2.27	0.66
1:D:41:LYS:NZ	5:D:2017:HOH:O	2.28	0.66
1:B:239:GLU:OE1	5:B:2163:HOH:O	2.14	0.65
1:C:103:GLU:OE1	5:C:2074:HOH:O	2.16	0.63
2:D:1333:2B4:H1	2:D:1333:2B4:C12	2.29	0.63
2:D:1333:2B4:C1	2:D:1333:2B4:C12	2.77	0.60
2:A:1332:2B4:O13	3:A:1333:MLI:O8	0.60	0.60
1:A:317:LYS:O	1:A:320:ASP:N	2.37	0.58
1:B:214:ASN:ND2	5:B:2152:HOH:O	2.37	0.57
1:B:128:PRO:O	1:B:156:ARG:NH2	2.39	0.56

*Continued on next page...*

*Continued from previous page...*

Atom-1	Atom-2	Distance(Å)	Clash(Å)
1:D:196:SER:OG	1:D:230:HIS:NE2	2.41	0.54
1:A:314:ARG:CG	1:A:314:ARG:NH1	2.71	0.53
1:B:129:GLN:NE2	5:B:2095:HOH:O	2.42	0.53
1:B:280:TYR:OH	5:B:2193:HOH:O	2.19	0.51
1:A:264:LYS:NZ	5:A:2179:HOH:O	2.44	0.50
1:A:310:ASP:O	1:A:313:ALA:N	2.45	0.48
1:B:131:LYS:NZ	5:B:2097:HOH:O	2.45	0.48
1:C:227:LYS:NZ	5:C:2133:HOH:O	2.47	0.47
1:D:317:LYS:O	1:D:320:ASP:N	2.47	0.47
1:A:135:VAL:O	2:A:1332:2B4:H2	2.14	0.47
1:C:192:HIS:NE2	2:C:1333:2B4:O14	2.48	0.47
1:C:222:ASP:O	1:C:225:GLN:NE2	2.49	0.46
1:B:100[B]:GLN:OE1	1:B:100[B]:GLN:CA	2.64	0.46
1:A:313:ALA:O	1:A:317:LYS:N	2.49	0.46
1:A:185:HIS:NE2	3:A:1335:MLI:O8	2.50	0.45
1:A:310:ASP:O	1:A:314:ARG:N	2.50	0.44
1:A:168:ARG:NH1	2:A:1332:2B4:O13	2.50	0.44
1:A:196:SER:OG	1:A:230:HIS:NE2	2.51	0.44
1:A:276:ILE:CD1	1:A:282:ILE:CD1	2.95	0.44
1:D:87:ASN:ND2	5:D:2038:HOH:O	2.50	0.44
1:B:192:HIS:NE2	2:B:1333:2B4:O14	2.53	0.42
1:A:51:ASP:OD1	1:A:52:VAL:N	2.52	0.42
1:D:314:ARG:NH1	5:D:2081:HOH:O	2.52	0.42
1:D:191:GLU:OE1	1:D:195:SER:OG	2.38	0.42
3:A:1335:MLI:O6	1:D:185:HIS:ND1	2.53	0.41
5:A:2167:HOH:O	1:B:56:LYS:NZ	2.52	0.41
1:B:99:GLN:N	1:B:99:GLN:OE1	2.54	0.41
1:D:105:ARG:NH1	5:D:2047:HOH:O	2.53	0.41
2:A:1332:2B4:H1	5:A:2117:HOH:O	2.20	0.41
1:C:154:LYS:NZ	5:C:2105:HOH:O	2.54	0.41
1:B:103:GLU:O	1:B:238:TYR:OH	2.39	0.40
1:D:282:ILE:CD1	1:D:319:ALA:CB	3.00	0.40
1:D:131:LYS:NZ	1:D:296:GLN:O	2.54	0.40

There are no symmetry-related clashes.

## 5.3 Torsion angles

### 5.3.1 Protein backbone ⓘ

In the following table, the Percentiles column shows the percent Ramachandran outliers of the chain as a percentile score with respect to all X-ray entries followed by that with respect to entries

of similar resolution. The Analysed column shows the number of residues for which the backbone conformation was analysed, and the total number of residues.

Mol	Chain	Analysed	Favoured	Allowed	Outliers	Percentiles	
1	A	324/331 (98%)	314 (97%)	10 (3%)	0	100	100
1	B	331/331 (100%)	321 (97%)	10 (3%)	0	100	100
1	C	331/331 (100%)	318 (96%)	12 (4%)	1 (0%)	50	62
1	D	332/331 (100%)	321 (97%)	9 (3%)	2 (1%)	33	39
All	All	1318/1324 (100%)	1274 (97%)	41 (3%)	3 (0%)	56	70

All (3) Ramachandran outliers are listed below:

Mol	Chain	Res	Type
1	C	285	ASP
1	D	280	TYR
1	D	318	SER

### 5.3.2 Protein sidechains ⓘ

In the following table, the Percentiles column shows the percent sidechain outliers of the chain as a percentile score with respect to all X-ray entries followed by that with respect to entries of similar resolution. The Analysed column shows the number of residues for which the sidechain conformation was analysed, and the total number of residues.

Mol	Chain	Analysed	Rotameric	Outliers	Percentiles	
1	A	270/286 (94%)	265 (98%)	5 (2%)	69	84
1	B	277/286 (97%)	274 (99%)	3 (1%)	84	93
1	C	276/286 (96%)	275 (100%)	1 (0%)	95	98
1	D	272/286 (95%)	261 (96%)	11 (4%)	42	56
All	All	1095/1144 (96%)	1075 (98%)	20 (2%)	71	85

All (20) residues with a non-rotameric sidechain are listed below:

Mol	Chain	Res	Type
1	A	30	VAL
1	A	115	ILE
1	A	275	MET
1	A	310	ASP
1	A	314	ARG
1	B	136	SER

*Continued on next page...*

*Continued from previous page...*

Mol	Chain	Res	Type
1	B	175	GLU
1	B	242	LYS
1	C	273	SER
1	D	84	VAL
1	D	98	ARG
1	D	99	GLN
1	D	136	SER
1	D	148	LYS
1	D	175	GLU
1	D	194	ASP
1	D	239[A]	GLU
1	D	239[B]	GLU
1	D	306	THR
1	D	318	SER

Some sidechains can be flipped to improve hydrogen bonding and reduce clashes. There are no such sidechains identified.

### 5.3.3 RNA ⓘ

There are no RNA chains in this entry.

## 5.4 Non-standard residues in protein, DNA, RNA chains ⓘ

There are no non-standard protein/DNA/RNA residues in this entry.

## 5.5 Carbohydrates ⓘ

There are no carbohydrates in this entry.

## 5.6 Ligand geometry ⓘ

12 ligands are modelled in this entry.

In the following table, the Counts columns list the number of bonds (or angles) for which Mogul statistics could be retrieved, the number of bonds (or angles) that are observed in the model and the number of bonds (or angles) that are defined in the chemical component dictionary. The Link column lists molecule types, if any, to which the group is linked. The Z score for a bond length (or angle) is the number of standard deviations the observed value is removed from the expected value. A bond length (or angle) with  $|Z| > 2$  is considered an outlier worth inspection. RMSZ is the root-mean-square of all Z scores of the bond lengths (or angles).

Mol	Type	Chain	Res	Link	Bond lengths			Bond angles		
					Counts	RMSZ	# Z  > 2	Counts	RMSZ	# Z  > 2
2	2B4	A	1332	-	15,15,15	0.44	0	20,20,20	0.52	0
3	MLI	A	1333	-	2,6,6	3.53	2 (100%)	0,7,7	0.00	-
3	MLI	A	1334	-	2,6,6	3.01	2 (100%)	0,7,7	0.00	-
3	MLI	A	1335	-	2,6,6	2.18	1 (50%)	0,7,7	0.00	-
4	GOL	B	1332	-	5,5,5	0.39	0	5,5,5	0.70	0
2	2B4	B	1333	-	15,15,15	0.61	0	20,20,20	0.47	0
3	MLI	B	1334	-	2,6,6	4.08	2 (100%)	0,7,7	0.00	-
4	GOL	C	1332	-	5,5,5	0.40	0	5,5,5	0.72	0
2	2B4	C	1333	-	15,15,15	0.63	0	20,20,20	0.46	0
3	MLI	C	1334	-	2,6,6	0.84	0	0,7,7	0.00	-
4	GOL	D	1332	-	5,5,5	0.29	0	5,5,5	0.61	0
2	2B4	D	1333	-	15,15,15	0.60	0	20,20,20	0.54	0

In the following table, the Chirals column lists the number of chiral outliers, the number of chiral centers analysed, the number of these observed in the model and the number defined in the chemical component dictionary. Similar counts are reported in the Torsion and Rings columns. '-' means no outliers of that kind were identified.

Mol	Type	Chain	Res	Link	Chirals	Torsions	Rings
2	2B4	A	1332	-	-	0/12/12/12	0/1/1/1
3	MLI	A	1333	-	-	0/0/4/4	0/0/0/0
3	MLI	A	1334	-	-	0/0/4/4	0/0/0/0
3	MLI	A	1335	-	-	0/0/4/4	0/0/0/0
4	GOL	B	1332	-	-	0/4/4/4	0/0/0/0
2	2B4	B	1333	-	-	0/12/12/12	0/1/1/1
3	MLI	B	1334	-	-	0/0/4/4	0/0/0/0
4	GOL	C	1332	-	-	0/4/4/4	0/0/0/0
2	2B4	C	1333	-	-	0/12/12/12	0/1/1/1
3	MLI	C	1334	-	-	0/0/4/4	0/0/0/0
4	GOL	D	1332	-	-	0/4/4/4	0/0/0/0
2	2B4	D	1333	-	-	0/12/12/12	0/1/1/1

All (7) bond length outliers are listed below:

Mol	Chain	Res	Type	Atoms	Z	Observed(Å)	Ideal(Å)
3	B	1334	MLI	C1-C3	4.16	1.52	1.49
3	B	1334	MLI	C1-C2	4.00	1.52	1.49
3	A	1333	MLI	C1-C2	3.98	1.52	1.49
3	A	1334	MLI	C1-C2	3.60	1.51	1.49
3	A	1333	MLI	C1-C3	3.02	1.51	1.49
3	A	1335	MLI	C1-C2	2.80	1.51	1.49

*Continued on next page...*

*Continued from previous page...*

Mol	Chain	Res	Type	Atoms	Z	Observed(Å)	Ideal(Å)
3	A	1334	MLI	C1-C3	2.29	1.51	1.49

There are no bond angle outliers.

There are no chirality outliers.

There are no torsion outliers.

There are no ring outliers.

## 5.7 Other polymers ⓘ

There are no such residues in this entry.

## 5.8 Polymer linkage issues

There are no chain breaks in this entry.

## 6 Fit of model and data ⓘ

### 6.1 Protein, DNA and RNA chains ⓘ

In the following table, the column labelled ‘#RSRZ> 2’ contains the number (and percentage) of RSRZ outliers, followed by percent RSRZ outliers for the chain as percentile scores relative to all X-ray entries and entries of similar resolution. The OWAB column contains the minimum, median, 95<sup>th</sup> percentile and maximum values of the occupancy-weighted average B-factor per residue. The column labelled ‘Q< 0.9’ lists the number of (and percentage) of residues with an average occupancy less than 0.9.

Mol	Chain	Analysed	<RSRZ>	#RSRZ>2	OWAB(Å <sup>2</sup> )	Q<0.9
1	A	327/331 (98%)	0.09	16 (4%) 28 31	18, 28, 62, 90	0
1	B	330/331 (99%)	-0.06	7 (2%) 60 63	17, 25, 46, 62	0
1	C	330/331 (99%)	0.06	15 (4%) 32 35	18, 28, 53, 74	0
1	D	330/331 (99%)	0.18	14 (4%) 35 38	18, 32, 60, 69	0
All	All	1317/1324 (99%)	0.07	52 (3%) 37 41	17, 28, 57, 90	0

All (52) RSRZ outliers are listed below:

Mol	Chain	Res	Type	RSRZ
1	A	329	LEU	5.0
1	A	331	PHE	4.1
1	B	2	ALA	4.0
1	B	13	LYS	3.4
1	C	331	PHE	3.4
1	D	135	VAL	3.3
1	D	313	ALA	3.3
1	B	281	GLY	3.3
1	A	320	ASP	3.2
1	A	281	GLY	3.2
1	D	281	GLY	3.2
1	D	220	ASP	3.1
1	A	330	GLN	3.0
1	C	323	TRP	3.0
1	D	272	ILE	3.0
1	C	221	ALA	3.0
1	D	238	TYR	3.0
1	C	228[A]	ASP	2.9
1	D	245	GLY	2.9
1	D	310	ASP	2.8
1	C	238	TYR	2.8

*Continued on next page...*

*Continued from previous page...*

Mol	Chain	Res	Type	RSRZ
1	A	53	ILE	2.8
1	B	330	GLN	2.7
1	C	53	ILE	2.7
1	D	221	ALA	2.7
1	B	15	GLU	2.7
1	A	279	LEU	2.6
1	A	17	VAL	2.6
1	C	330	GLN	2.6
1	D	92	ILE	2.5
1	C	278	GLY	2.5
1	A	284	GLU	2.5
1	B	53	ILE	2.4
1	D	133	LEU	2.3
1	A	278	GLY	2.3
1	B	5	ASP	2.3
1	C	16	GLN	2.3
1	A	221	ALA	2.3
1	C	324	GLY	2.2
1	C	329	LEU	2.2
1	A	328	GLU	2.2
1	A	323	TRP	2.2
1	C	220	ASP	2.2
1	D	134	ILE	2.2
1	C	281	GLY	2.2
1	C	54	GLU	2.2
1	D	273	SER	2.1
1	A	327	LYS	2.1
1	A	283	LYS	2.1
1	D	100	GLN	2.1
1	A	317	LYS	2.0
1	C	14	GLU	2.0

## 6.2 Non-standard residues in protein, DNA, RNA chains ⓘ

There are no non-standard protein/DNA/RNA residues in this entry.

## 6.3 Carbohydrates ⓘ

There are no carbohydrates in this entry.



## 6.4 Ligands ⓘ

In the following table, the Atoms column lists the number of modelled atoms in the group and the number defined in the chemical component dictionary. LLDF column lists the quality of electron density of the group with respect to its neighbouring residues in protein, DNA or RNA chains. The B-factors column lists the minimum, median, 95<sup>th</sup> percentile and maximum values of B factors of atoms in the group. The column labelled 'Q< 0.9' lists the number of atoms with occupancy less than 0.9.

Mol	Type	Chain	Res	Atoms	RSR	LLDF	B-factors(Å <sup>2</sup> )	Q<0.9
4	GOL	D	1332	6/6	0.18	6.46	44,50,52,52	0
4	GOL	C	1332	6/6	0.20	5.90	54,60,62,68	0
4	GOL	B	1332	6/6	0.19	3.14	34,44,49,53	0
2	2B4	A	1332	15/15	0.20	1.43	29,38,41,47	15
3	MLI	A	1333	7/7	0.18	0.98	21,21,22,23	7
3	MLI	A	1334	7/7	0.10	-0.20	27,30,32,32	0
3	MLI	A	1335	7/7	0.11	-0.24	26,27,30,33	0
2	2B4	D	1333	15/15	0.14	-0.34	33,39,43,49	0
3	MLI	B	1334	7/7	0.10	-0.44	22,25,27,27	0
3	MLI	C	1334	7/7	0.09	-0.90	25,27,30,32	0
2	2B4	C	1333	15/15	0.10	-1.36	24,28,33,40	0
2	2B4	B	1333	15/15	0.07	-2.41	19,24,26,28	0

## 6.5 Other polymers ⓘ

There are no such residues in this entry.