



Full wwPDB X-ray Structure Validation Report ⓘ

Feb 27, 2014 – 02:34 AM GMT

PDB ID : 4AJW
Title : Discovery and Optimization of New Benzimidazole- and Benzoxazole-Pyrimidone Selective PI3K β Inhibitors for the Treatment of Phosphatase and TENSin homologue (PTEN)-Deficient Cancers”
Authors : Certal, V.; Halley, F.; Virone-Oddos, A.; Delorme, C.; Karlsson, A.; Rak, A.; Thompson, F.; Filoche-Romme, B.; El-Ahmad, Y.; Carry, J.C.; Abecassis, P.Y.; Lejeune, P.; Bonnevaux, H.; Nicolas, J.P.; Bertrand, T.; Marquette, J.P.; Michot, N.; Benard, T.; Below, P.; Vade, I.; Chatreaux, F.; Lebourg, G.; Pilorge, F.; Angouillant-Boniface, O.; Louboutin, A.; Lengauer, C.; Schio, L.
Deposited on : 2012-02-20
Resolution : 2.80 Å (reported)

This is a full wwPDB validation report for a publicly released PDB entry.
We welcome your comments at validation@mail.wwpdb.org
A user guide is available at <http://wwpdb.org/ValidationPDFNotes.html>

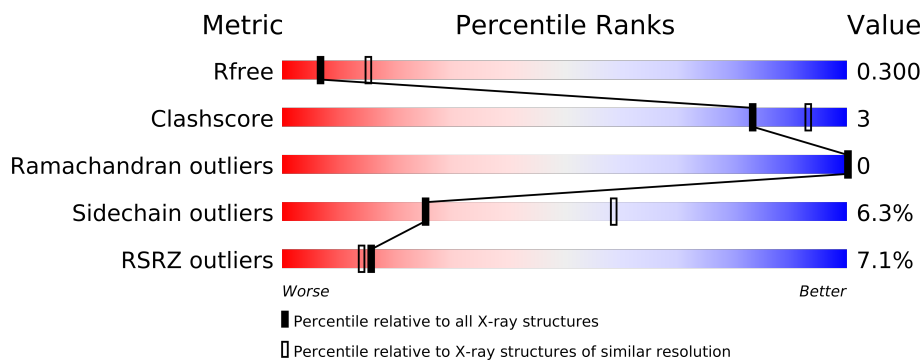
The following versions of software and data (see [references](#)) were used in the production of this report:

MolProbity	:	4.02b-467
Mogul	:	1.15 2013
Xtriage (Phenix)	:	dev-1323
EDS	:	stable22639
Percentile statistics	:	21963
Refmac	:	5.8.0049
CCP4	:	6.3.0 (Settle)
Ideal geometry (proteins)	:	Engh & Huber (2001)
Ideal geometry (DNA, RNA)	:	Parkinson et. al. (1996)
Validation Pipeline (wwPDB-VP)	:	stable22683

1 Overall quality at a glance

The reported resolution of this entry is 2.80 Å.

Percentile scores (ranging between 0-100) for global validation metrics of the entry are shown in the following graphic. The table shows the number of entries on which the scores are based.



Metric	Whole archive (#Entries)	Similar resolution (#Entries, resolution range(Å))
R_{free}	66092	1799 (2.80-2.80)
Clashscore	79885	2295 (2.80-2.80)
Ramachandran outliers	78287	2252 (2.80-2.80)
Sidechain outliers	78261	2254 (2.80-2.80)
RSRZ outliers	66119	1802 (2.80-2.80)

The table below summarises the geometric issues observed across the polymeric chains and their fit to the electron density. The red, orange, yellow and green segments on the lower bar indicate the fraction of residues that contain outliers for ≥ 3 , 2, 1 and 0 types of geometric quality criteria. The upper red bar (where present) indicates the fraction of residues that have poor fit to the electron density.

Mol	Chain	Length	Quality of chain
1	A	934	
1	B	934	

2 Entry composition i

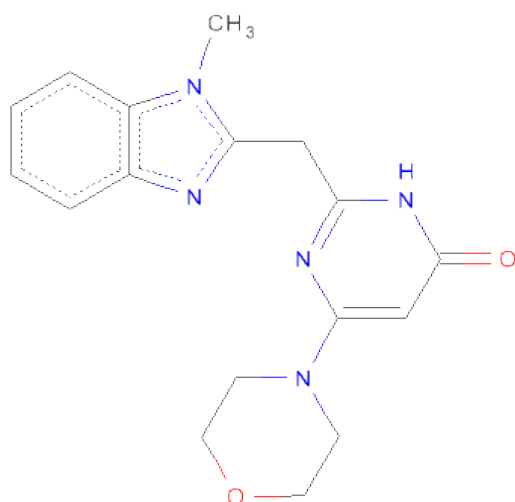
There are 3 unique types of molecules in this entry. The entry contains 12596 atoms, of which 0 are hydrogen and 0 are deuterium.

In the tables below, the ZeroOcc column contains the number of atoms modelled with zero occupancy, the AltConf column contains the number of residues with at least one atom in alternate conformation and the Trace column contains the number of residues modelled with at most 2 atoms.

- Molecule 1 is a protein called PHOSPHATIDYLINOSITOL-4,5-BISPHOSPHATE3-KINASE CATALYTIC SUBUNIT DELTA ISOFORM.

Mol	Chain	Residues	Atoms					ZeroOcc	AltConf	Trace
1	A	765	Total	C	N	O	S	0	0	0
			6151	3942	1042	1116	51			
1	B	792	Total	C	N	O	S	0	0	0
			6363	4076	1076	1158	53			

- Molecule 2 is 2-[(1-METHYL-1H-BENZIMIDAZOL-2-YL)METHYL]-6-MORPHOLIN-4-YL PYRIMIDIN-4(3H)-ONE (three-letter code: VWN) (formula: C₁₇H₁₉N₅O₂).



Mol	Chain	Residues	Atoms				ZeroOcc	AltConf
2	A	1	Total	C	N	O	0	0
			24	17	5	2		
2	B	1	Total	C	N	O	0	0
			24	17	5	2		

- Molecule 3 is water.

Mol	Chain	Residues	Atoms		ZeroOcc	AltConf
3	A	19	Total	O	0	0
			19	19		
3	B	15	Total	O	0	0
			15	15		



4 Data and refinement statistics

Property	Value	Source
Space group	P 1 21 1	Depositor
Cell constants a, b, c, α , β , γ	63.40Å 220.47Å 78.26Å 90.00° 113.87° 90.00°	Depositor
Resolution (Å)	71.57 – 2.80 110.23 – 2.80	Depositor EDS
% Data completeness (in resolution range)	98.4 (71.57-2.80) 98.3 (110.23-2.80)	Depositor EDS
R_{merge}	0.07	Depositor
R_{sym}	(Not available)	Depositor
$\langle I/\sigma(I) \rangle$ ¹	2.13 (at 2.82Å)	Xtriage
Refinement program	BUSTER-TNT 2.9.7	Depositor
R, R_{free}	0.252 , 0.277 0.282 , 0.300	Depositor DCC
R_{free} test set	2422 reflections (5.38%)	DCC
Wilson B-factor (Å ²)	68.5	Xtriage
Anisotropy	0.236	Xtriage
Bulk solvent k_{sol} (e/Å ³), B_{sol} (Å ²)	0.30 , 22.8	EDS
Estimated twinning fraction	0.457 for h,-k,-h-l	Xtriage
L-test for twinning	$\langle L \rangle = 0.42$, $\langle L^2 \rangle = 0.25$	Xtriage
Outliers	0 of 47495 reflections	Xtriage
F_o, F_c correlation	0.89	EDS
Total number of atoms	12596	wwPDB-VP
Average B, all atoms (Å ²)	74.0	wwPDB-VP

Xtriage's analysis on translational NCS is as follows: *The largest off-origin peak in the Patterson function is 5.11% of the height of the origin peak. No significant pseudotranslation is detected.*

¹Intensities estimated from amplitudes.

5 Model quality

5.1 Standard geometry

Bond lengths and bond angles in the following residue types are not validated in this section: VWN

The Z score for a bond length (or angle) is the number of standard deviations the observed value is removed from the expected value. A bond length (or angle) with $|Z| > 5$ is considered an outlier worth inspection. RMSZ is the root-mean-square of all Z scores of the bond lengths (or angles).

Mol	Chain	Bond lengths		Bond angles	
		RMSZ	$\# Z > 5$	RMSZ	$\# Z > 5$
1	A	0.43	1/6282 (0.0%)	0.55	0/8470
1	B	0.45	1/6499 (0.0%)	0.55	0/8767
All	All	0.44	2/12781 (0.0%)	0.55	0/17237

All (2) bond length outliers are listed below:

Mol	Chain	Res	Type	Atoms	Z	Observed(Å)	Ideal(Å)
1	B	745	CYS	CB-SG	-6.57	1.71	1.82
1	A	745	CYS	CB-SG	-5.03	1.73	1.81

There are no bond angle outliers.

There are no chirality outliers.

There are no planarity outliers.

5.2 Close contacts

In the following table, the Non-H and H(model) columns list the number of non-hydrogen atoms and hydrogen atoms in the chain respectively. The H(added) column lists the number of hydrogens added by MolProbity. The Clashes column lists the number of clashes within the asymmetric unit, and the number in parentheses is this value normalized per 1000 atoms of the molecule in the chain. The Symm-Clashes column gives symmetry related clashes, in the same way as for the Clashes column.

Mol	Chain	Non-H	H(model)	H(added)	Clashes	Symm-Clashes
1	A	6151	0	6129	32	0
1	B	6363	0	6340	42	0
2	A	24	0	19	1	0
2	B	24	0	19	1	0
3	A	19	0	0	0	0

Continued on next page...

Continued from previous page...

Mol	Chain	Non-H	H(model)	H(added)	Clashes	Symm-Clashes
3	B	15	0	0	0	0
All	All	12596	0	12507	74	0

Clashscore is defined as the number of clashes calculated for the entry per 1000 atoms (including hydrogens) of the entry. The overall clashscore for this entry is 3.

All (74) close contacts within the same asymmetric unit are listed below.

Atom-1	Atom-2	Distance(Å)	Clash(Å)
1:B:753:ASP:CG	1:B:757:LYS:NZ	2.08	1.08
1:B:753:ASP:HA	1:B:757:LYS:HZ2	1.32	0.91
1:B:753:ASP:HA	1:B:757:LYS:NZ	1.85	0.90
1:A:707:THR:OG1	1:A:709:PRO:HD2	1.74	0.86
1:B:753:ASP:CG	1:B:757:LYS:HZ1	1.79	0.86
1:A:989:LEU:O	1:A:989:LEU:HG	1.75	0.84
1:B:431:GLN:HG3	1:B:484:TYR:CE1	2.16	0.81
1:A:483:VAL:CG2	1:A:483:VAL:O	2.30	0.80
1:A:483:VAL:HG22	1:A:483:VAL:O	1.82	0.78
1:B:989:LEU:HG	1:B:989:LEU:O	1.87	0.75
1:A:431:GLN:HG3	1:A:484:TYR:CE1	2.21	0.75
1:A:730:HIS:HD2	1:A:742:GLU:OE1	1.70	0.74
1:B:483:VAL:O	1:B:483:VAL:CG2	2.36	0.73
1:B:753:ASP:CA	1:B:757:LYS:HZ2	2.03	0.72
1:B:753:ASP:OD2	1:B:757:LYS:NZ	2.18	0.71
1:B:753:ASP:CA	1:B:757:LYS:NZ	2.54	0.71
1:B:117:ILE:O	1:B:121:ILE:HG23	1.89	0.71
1:B:431:GLN:HG3	1:B:484:TYR:CD1	2.34	0.62
1:A:431:GLN:HG3	1:A:484:TYR:CD1	2.34	0.62
1:A:479:ALA:HB3	1:A:482:PRO:HD2	1.81	0.61
1:A:706:THR:OG1	1:A:707:THR:N	2.29	0.60
1:B:483:VAL:O	1:B:483:VAL:HG22	2.02	0.60
1:B:989:LEU:CG	1:B:989:LEU:O	2.45	0.59
1:A:479:ALA:CB	1:A:482:PRO:HD2	2.32	0.59
1:B:421:ALA:HB2	1:B:441:MET:HG2	1.84	0.59
1:B:753:ASP:CG	1:B:757:LYS:HZ3	2.07	0.56
1:B:753:ASP:CG	1:B:757:LYS:HZ2	2.05	0.55
1:B:753:ASP:CB	1:B:757:LYS:NZ	2.70	0.54
1:B:753:ASP:CB	1:B:757:LYS:HZ2	2.21	0.54
1:A:479:ALA:HB3	1:A:482:PRO:CD	2.39	0.53
1:A:421:ALA:HB2	1:A:441:MET:HG2	1.91	0.53
1:A:989:LEU:O	1:A:989:LEU:CG	2.45	0.53
1:A:431:GLN:HA	1:A:484:TYR:HA	1.92	0.52
1:B:989:LEU:HD12	1:B:989:LEU:C	2.30	0.52

Continued on next page...

Continued from previous page...

Atom-1	Atom-2	Distance(Å)	Clash(Å)
1:B:347:LEU:HD21	1:B:425:LEU:HD11	1.91	0.52
1:B:483:VAL:HG23	1:B:483:VAL:O	2.09	0.51
1:A:380:SER:HB3	1:A:383:ASP:HB2	1.92	0.51
1:A:347:LEU:HD21	1:A:425:LEU:HD11	1.91	0.51
1:A:899:ILE:HG12	1:A:909:HIS:CE1	2.47	0.50
1:A:491:ILE:HG21	1:A:565:LEU:HD22	1.94	0.50
1:B:491:ILE:HG21	1:B:565:LEU:HD22	1.94	0.49
1:B:911:ASP:OD1	1:B:911:ASP:O	2.30	0.49
1:B:753:ASP:HA	1:B:757:LYS:HZ3	1.76	0.48
1:A:479:ALA:C	1:A:482:PRO:HD3	2.34	0.48
1:B:886:THR:HA	1:B:891:ILE:HD12	1.96	0.47
1:A:209:THR:HG22	1:A:257:CYS:HB3	1.96	0.47
1:A:886:THR:HA	1:A:891:ILE:HD12	1.96	0.47
1:A:263:CYS:HA	1:A:266:LEU:HD12	1.98	0.47
1:B:326:GLU:HB3	1:B:474:TYR:HB3	1.98	0.46
1:B:692:LEU:HG	1:B:728:LEU:HD21	1.97	0.45
1:A:326:GLU:HB3	1:A:474:TYR:HB3	1.98	0.45
1:B:263:CYS:HA	1:B:266:LEU:HD12	1.98	0.45
1:B:209:THR:HG22	1:B:257:CYS:HB3	1.99	0.45
1:A:730:HIS:CD2	1:A:742:GLU:OE1	2.61	0.44
1:A:707:THR:OG1	1:A:709:PRO:CD	2.56	0.44
1:B:434:THR:HA	1:B:435:GLY:HA2	1.77	0.44
1:A:777:ILE:HB	1:A:825:ILE:HB	1.99	0.43
1:A:580:LEU:HA	1:A:583:LEU:HD12	2.01	0.43
1:A:419:ALA:HB1	1:A:441:MET:HB3	2.01	0.43
1:B:752:MET:O	1:B:757:LYS:HA	2.18	0.42
1:A:900:MET:SD	2:A:2027:VWN:H72C	2.59	0.42
1:B:691:LYS:HE3	1:B:723:THR:HB	2.01	0.42
1:B:753:ASP:CA	1:B:757:LYS:HZ3	2.28	0.42
1:B:580:LEU:HA	1:B:583:LEU:HD12	2.01	0.42
1:B:971:GLY:HA3	1:B:1004:LEU:HD11	2.02	0.42
1:B:900:MET:SD	2:B:2027:VWN:H72C	2.60	0.42
1:B:759:LEU:HB2	1:B:778:PHE:HB3	2.02	0.42
1:B:777:ILE:HB	1:B:825:ILE:HB	2.02	0.42
1:B:583:LEU:HD11	1:B:600:LEU:HD11	2.03	0.41
1:B:328:ILE:HD11	1:B:474:TYR:HB2	2.02	0.41
1:A:730:HIS:H	1:A:742:GLU:HA	1.86	0.41
1:B:750:THR:OG1	1:B:751:PHE:N	2.54	0.41
1:A:971:GLY:HA3	1:A:1004:LEU:HD11	2.02	0.41
1:A:583:LEU:HD11	1:A:600:LEU:HD11	2.02	0.40

There are no symmetry-related clashes.

5.3 Torsion angles

5.3.1 Protein backbone ⓘ

In the following table, the Percentiles column shows the percent Ramachandran outliers of the chain as a percentile score with respect to all X-ray entries followed by that with respect to entries of similar resolution. The Analysed column shows the number of residues for which the backbone conformation was analysed, and the total number of residues.

Mol	Chain	Analysed	Favoured	Allowed	Outliers	Percentiles	
1	A	741/934 (79%)	718 (97%)	23 (3%)	0	100	100
1	B	770/934 (82%)	746 (97%)	24 (3%)	0	100	100
All	All	1511/1868 (81%)	1464 (97%)	47 (3%)	0	100	100

There are no Ramachandran outliers to report.

5.3.2 Protein sidechains ⓘ

In the following table, the Percentiles column shows the percent sidechain outliers of the chain as a percentile score with respect to all X-ray entries followed by that with respect to entries of similar resolution. The Analysed column shows the number of residues for which the sidechain conformation was analysed, and the total number of residues.

Mol	Chain	Analysed	Rotameric	Outliers	Percentiles	
1	A	674/823 (82%)	630 (94%)	44 (6%)	24	57
1	B	700/823 (85%)	657 (94%)	43 (6%)	26	61
All	All	1374/1646 (84%)	1287 (94%)	87 (6%)	25	59

All (87) residues with a non-rotameric sidechain are listed below:

Mol	Chain	Res	Type
1	A	112	LEU
1	A	119	LEU
1	A	138	ASP
1	A	166	SER
1	A	190	LEU
1	A	191	LEU
1	A	221	LEU
1	A	224	LYS
1	A	270	LEU
1	A	332	LYS
1	A	347	LEU

Continued on next page...

Continued from previous page...

Mol	Chain	Res	Type
1	A	381	VAL
1	A	383	ASP
1	A	394	LEU
1	A	423	LEU
1	A	434	THR
1	A	452	LEU
1	A	466	GLU
1	A	471	LEU
1	A	489	GLU
1	A	493	GLU
1	A	530	LEU
1	A	539	GLN
1	A	560	ASP
1	A	565	LEU
1	A	598	LYS
1	A	617	GLN
1	A	641	ARG
1	A	675	SER
1	A	687	GLU
1	A	698	PHE
1	A	706	THR
1	A	707	THR
1	A	723	THR
1	A	731	LEU
1	A	744	VAL
1	A	755	LYS
1	A	791	LEU
1	A	795	GLN
1	A	895	HIS
1	A	911	ASP
1	A	915	PHE
1	A	934	LEU
1	A	1014	HIS
1	B	111	LYS
1	B	112	LEU
1	B	119	LEU
1	B	121	ILE
1	B	138	ASP
1	B	166	SER
1	B	190	LEU
1	B	191	LEU
1	B	221	LEU

Continued on next page...

Continued from previous page...

Mol	Chain	Res	Type
1	B	224	LYS
1	B	270	LEU
1	B	332	LYS
1	B	341	LEU
1	B	347	LEU
1	B	374	ARG
1	B	380	SER
1	B	383	ASP
1	B	394	LEU
1	B	423	LEU
1	B	434	THR
1	B	466	GLU
1	B	471	LEU
1	B	483	VAL
1	B	489	GLU
1	B	493	GLU
1	B	530	LEU
1	B	539	GLN
1	B	560	ASP
1	B	565	LEU
1	B	598	LYS
1	B	617	GLN
1	B	675	SER
1	B	687	GLU
1	B	723	THR
1	B	731	LEU
1	B	744	VAL
1	B	755	LYS
1	B	791	LEU
1	B	795	GLN
1	B	895	HIS
1	B	915	PHE
1	B	934	LEU
1	B	1014	HIS

Some sidechains can be flipped to improve hydrogen bonding and reduce clashes. All (11) such sidechains are listed below:

Mol	Chain	Res	Type
1	A	258	HIS
1	A	610	GLN
1	A	730	HIS
1	A	732	GLN

Continued on next page...

Continued from previous page...

Mol	Chain	Res	Type
1	A	786	GLN
1	A	906	GLN
1	B	258	HIS
1	B	610	GLN
1	B	780	ASN
1	B	786	GLN
1	B	906	GLN

5.3.3 RNA ⓘ

There are no RNA chains in this entry.

5.4 Non-standard residues in protein, DNA, RNA chains ⓘ

There are no non-standard protein/DNA/RNA residues in this entry.

5.5 Carbohydrates ⓘ

There are no carbohydrates in this entry.

5.6 Ligand geometry ⓘ

2 ligands are modelled in this entry.

In the following table, the Counts columns list the number of bonds (or angles) for which Mogul statistics could be retrieved, the number of bonds (or angles) that are observed in the model and the number of bonds (or angles) that are defined in the chemical component dictionary. The Link column lists molecule types, if any, to which the group is linked. The Z score for a bond length (or angle) is the number of standard deviations the observed value is removed from the expected value. A bond length (or angle) with $|Z| > 2$ is considered an outlier worth inspection. RMSZ is the root-mean-square of all Z scores of the bond lengths (or angles).

Mol	Type	Chain	Res	Link	Bond lengths			Bond angles		
					Counts	RMSZ	$\# Z > 2$	Counts	RMSZ	$\# Z > 2$
2	VWN	A	2027	-	27,27,27	1.37	3 (11%)	36,38,38	1.32	2 (5%)
2	VWN	B	2027	-	27,27,27	1.36	3 (11%)	36,38,38	1.32	2 (5%)

In the following table, the Chirals column lists the number of chiral outliers, the number of chiral centers analysed, the number of these observed in the model and the number defined in the chemical component dictionary. Similar counts are reported in the Torsion and Rings columns. '-' means

no outliers of that kind were identified.

Mol	Type	Chain	Res	Link	Chirals	Torsions	Rings
2	VWN	A	2027	-	-	0/7/16/16	0/2/4/4
2	VWN	B	2027	-	-	0/7/16/16	0/2/4/4

All (6) bond length outliers are listed below:

Mol	Chain	Res	Type	Atoms	Z	Observed(Å)	Ideal(Å)
2	A	2027	VWN	C9-N10	4.71	1.40	1.34
2	B	2027	VWN	C9-N10	4.61	1.40	1.34
2	B	2027	VWN	C14-N16	2.91	1.40	1.36
2	A	2027	VWN	C14-N16	2.86	1.40	1.36
2	B	2027	VWN	C1-N2	2.22	1.42	1.37
2	A	2027	VWN	C1-N2	2.21	1.42	1.37

All (4) bond angle outliers are listed below:

Mol	Chain	Res	Type	Atoms	Z	Observed(°)	Ideal(°)
2	B	2027	VWN	C24-N16-C14	4.87	130.60	126.04
2	A	2027	VWN	C24-N16-C14	4.83	130.56	126.04
2	A	2027	VWN	C11-C12-C1	4.59	121.44	116.12
2	B	2027	VWN	C11-C12-C1	4.56	121.40	116.12

There are no chirality outliers.

There are no torsion outliers.

There are no ring outliers.

5.7 Other polymers ⓘ

There are no such residues in this entry.

5.8 Polymer linkage issues

There are no chain breaks in this entry.

6 Fit of model and data ⓘ

6.1 Protein, DNA and RNA chains ⓘ

In the following table, the column labelled ‘#RSRZ> 2’ contains the number (and percentage) of RSRZ outliers, followed by percent RSRZ outliers for the chain as percentile scores relative to all X-ray entries and entries of similar resolution. The OWAB column contains the minimum, median, 95th percentile and maximum values of the occupancy-weighted average B-factor per residue. The column labelled ‘Q< 0.9’ lists the number of (and percentage) of residues with an average occupancy less than 0.9.

Mol	Chain	Analysed	<RSRZ>	#RSRZ>2		OWAB(Å ²)	Q<0.9
1	A	765/934 (81%)	0.58	51 (6%)	17 16	46, 71, 103, 124	5 (0%)
1	B	792/934 (84%)	0.62	59 (7%)	14 13	44, 73, 102, 129	5 (0%)
All	All	1557/1868 (83%)	0.60	110 (7%)	16 14	44, 72, 103, 129	10 (0%)

All (110) RSRZ outliers are listed below:

Mol	Chain	Res	Type	RSRZ
1	A	192	VAL	5.2
1	A	203	PHE	4.7
1	B	330	GLY	4.6
1	B	1014	HIS	4.6
1	B	185	VAL	4.4
1	A	944	GLN	4.3
1	A	381	VAL	4.2
1	A	191	LEU	4.2
1	B	934	LEU	4.1
1	A	1002	LEU	4.1
1	B	147	CYS	4.0
1	A	357	THR	4.0
1	A	325	ILE	3.9
1	A	1004	LEU	3.9
1	B	470	ALA	3.9
1	B	962	ARG	3.8
1	B	705	LYS	3.8
1	A	938	PHE	3.8
1	A	934	LEU	3.8
1	A	959	TYR	3.7
1	A	936	TYR	3.7
1	B	187	ASN	3.6
1	A	415	ASP	3.5
1	B	488	LEU	3.5

Continued on next page...

Continued from previous page...

Mol	Chain	Res	Type	RSRZ
1	B	206	GLN	3.5
1	A	718	CYS	3.4
1	B	708	LYS	3.4
1	B	933	ILE	3.3
1	A	932	PHE	3.1
1	A	133	ASP	3.0
1	A	193	ASN	3.0
1	B	136	VAL	3.0
1	A	187	ASN	3.0
1	B	268	SER	3.0
1	A	334	ASN	3.0
1	B	384	LEU	2.9
1	A	981	MET	2.9
1	A	702	SER	2.8
1	A	190	LEU	2.8
1	B	777	ILE	2.7
1	A	825	ILE	2.7
1	B	203	PHE	2.7
1	A	223	LYS	2.6
1	B	967	LEU	2.6
1	B	839	LEU	2.6
1	B	907	LEU	2.6
1	B	718	CYS	2.6
1	B	968	ARG	2.6
1	B	851	ASN	2.6
1	A	751	PHE	2.6
1	B	555	TRP	2.5
1	B	937	ASP	2.5
1	A	765	SER	2.5
1	A	605	ASP	2.5
1	A	745	CYS	2.5
1	A	852	LYS	2.5
1	A	592	VAL	2.5
1	B	341	LEU	2.5
1	B	1015	PHE	2.4
1	A	708	LYS	2.4
1	B	1001	SER	2.4
1	A	206	GLN	2.4
1	B	332	LYS	2.4
1	B	320	GLU	2.4
1	A	996	GLN	2.4
1	B	378	ASP	2.4

Continued on next page...

Continued from previous page...

Mol	Chain	Res	Type	RSRZ
1	A	136	VAL	2.4
1	A	597	ILE	2.4
1	B	194	VAL	2.3
1	B	618	VAL	2.3
1	A	974	PHE	2.3
1	A	198	GLY	2.3
1	B	1002	LEU	2.3
1	A	277	VAL	2.3
1	A	268	SER	2.3
1	B	198	GLY	2.3
1	A	1014	HIS	2.2
1	A	700	LYS	2.2
1	B	149	GLU	2.2
1	B	714	MET	2.2
1	A	271	THR	2.2
1	A	951	GLU	2.2
1	B	647	LEU	2.2
1	B	745	CYS	2.2
1	B	175	ALA	2.1
1	B	942	ILE	2.1
1	A	907	LEU	2.1
1	B	583	LEU	2.1
1	B	197	GLU	2.1
1	B	838	GLN	2.1
1	B	1005	GLY	2.1
1	A	760	TRP	2.1
1	B	154	ARG	2.1
1	A	1019	PHE	2.1
1	A	583	LEU	2.1
1	A	839	LEU	2.1
1	B	695	LEU	2.1
1	B	531	VAL	2.1
1	B	568	LEU	2.1
1	B	189	ALA	2.1
1	B	901	ILE	2.1
1	B	236	PRO	2.0
1	B	981	MET	2.0
1	A	824	LEU	2.0
1	B	709	PRO	2.0
1	A	696	ASN	2.0
1	B	146	PHE	2.0
1	B	466	GLU	2.0

Continued on next page...

Continued from previous page...

Mol	Chain	Res	Type	RSRZ
1	B	283	LEU	2.0
1	B	591	TYR	2.0

6.2 Non-standard residues in protein, DNA, RNA chains ⓘ

There are no non-standard protein/DNA/RNA residues in this entry.

6.3 Carbohydrates ⓘ

There are no carbohydrates in this entry.

6.4 Ligands ⓘ

In the following table, the Atoms column lists the number of modelled atoms in the group and the number defined in the chemical component dictionary. LLDF column lists the quality of electron density of the group with respect to its neighbouring residues in protein, DNA or RNA chains. The B-factors column lists the minimum, median, 95th percentile and maximum values of B factors of atoms in the group. The column labelled 'Q< 0.9' lists the number of atoms with occupancy less than 0.9.

Mol	Type	Chain	Res	Atoms	RSR	LLDF	B-factors(Å ²)	Q<0.9
2	VWN	A	2027	24/24	0.37	1.45	80,81,81,81	0
2	VWN	B	2027	24/24	0.28	0.59	72,73,73,74	0

6.5 Other polymers ⓘ

There are no such residues in this entry.