



Full wwPDB X-ray Structure Validation Report ⓘ

Mar 1, 2014 – 12:44 AM GMT

PDB ID : 3AMU
Title : Crystal structure of the TiaS-tRNA(Ile2)-AMPCPP-agmatinecomplex
Authors : Numata, T.; Osawa, T.
Deposited on : 2010-08-23
Resolution : 3.10 Å(reported)

This is a full wwPDB validation report for a publicly released PDB entry.

We welcome your comments at validation@mail.wwpdb.org

A user guide is available at <http://wwpdb.org/ValidationPDFNotes.html>

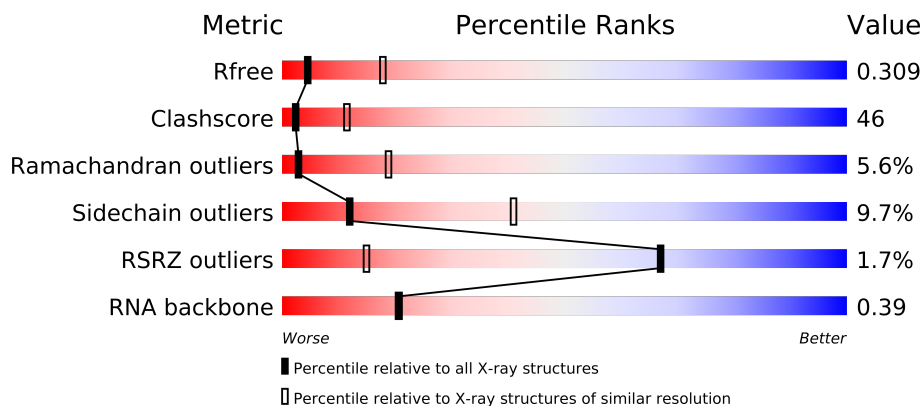
The following versions of software and data (see [references](#)) were used in the production of this report:

MolProbity : 4.02b-467
Mogul : 1.15 2013
Xtriage (Phenix) : dev-1323
EDS : stable22639
Percentile statistics : 21963
Refmac : 5.8.0049
CCP4 : 6.3.0 (Settle)
Ideal geometry (proteins) : Engh & Huber (2001)
Ideal geometry (DNA, RNA) : Parkinson et. al. (1996)
Validation Pipeline (wwPDB-VP) : stable22683

1 Overall quality at a glance

The reported resolution of this entry is 3.10 Å.

Percentile scores (ranging between 0-100) for global validation metrics of the entry are shown in the following graphic. The table shows the number of entries on which the scores are based.



Metric	Whole archive (#Entries)	Similar resolution (#Entries, resolution range(Å))
R_{free}	66092	1007 (3.18-3.02)
Clashscore	79885	1078 (3.16-3.04)
Ramachandran outliers	78287	1044 (3.16-3.04)
Sidechain outliers	78261	1044 (3.16-3.04)
RSRZ outliers	66119	1008 (3.18-3.02)
RNA backbone	1838	1047 (3.60-2.60)

The table below summarises the geometric issues observed across the polymeric chains and their fit to the electron density. The red, orange, yellow and green segments on the lower bar indicate the fraction of residues that contain outliers for ≥ 3 , 2, 1 and 0 types of geometric quality criteria. The upper red bar (where present) indicates the fraction of residues that have poor fit to the electron density.

Mol	Chain	Length	Quality of chain
1	A	440	
2	B	78	

2 Entry composition

There are 4 unique types of molecules in this entry. The entry contains 4952 atoms, of which 0 are hydrogen and 0 are deuterium.

In the tables below, the ZeroOcc column contains the number of atoms modelled with zero occupancy, the AltConf column contains the number of residues with at least one atom in alternate conformation and the Trace column contains the number of residues modelled with at most 2 atoms.

- Molecule 1 is a protein called Putative uncharacterized protein.

Mol	Chain	Residues	Atoms						ZeroOcc	AltConf	Trace
			Total	C	N	O	P	S			
1	A	402	3247	2067	556	607	1	16	0	0	0

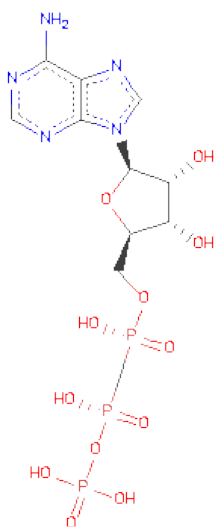
There are 20 discrepancies between the modelled and reference sequences:

Chain	Residue	Modelled	Actual	Comment	Reference
A	-19	MET	-	EXPRESSION TAG	UNP O28025
A	-18	GLY	-	EXPRESSION TAG	UNP O28025
A	-17	SER	-	EXPRESSION TAG	UNP O28025
A	-16	SER	-	EXPRESSION TAG	UNP O28025
A	-15	HIS	-	EXPRESSION TAG	UNP O28025
A	-14	HIS	-	EXPRESSION TAG	UNP O28025
A	-13	HIS	-	EXPRESSION TAG	UNP O28025
A	-12	HIS	-	EXPRESSION TAG	UNP O28025
A	-11	HIS	-	EXPRESSION TAG	UNP O28025
A	-10	HIS	-	EXPRESSION TAG	UNP O28025
A	-9	SER	-	EXPRESSION TAG	UNP O28025
A	-8	SER	-	EXPRESSION TAG	UNP O28025
A	-7	GLY	-	EXPRESSION TAG	UNP O28025
A	-6	LEU	-	EXPRESSION TAG	UNP O28025
A	-5	VAL	-	EXPRESSION TAG	UNP O28025
A	-4	PRO	-	EXPRESSION TAG	UNP O28025
A	-3	ARG	-	EXPRESSION TAG	UNP O28025
A	-2	GLY	-	EXPRESSION TAG	UNP O28025
A	-1	SER	-	EXPRESSION TAG	UNP O28025
A	0	HIS	-	EXPRESSION TAG	UNP O28025

- Molecule 2 is a RNA chain called RNA (78-MER).

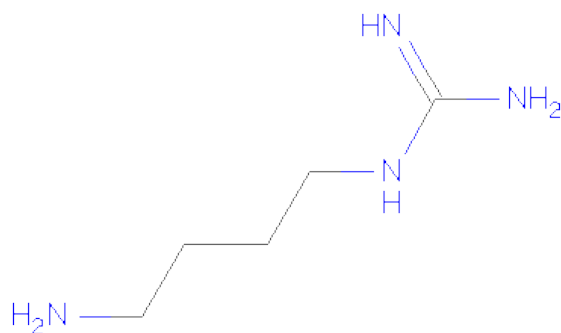
Mol	Chain	Residues	Atoms					ZeroOcc	AltConf	Trace
			Total	C	N	O	P			
2	B	78	1665	741	301	545	78	0	0	0

- Molecule 3 is DIPHOSPHOMETHYLPHOSPHONICACID ADENOSYL ESTER (three-letter code: APC) (formula: $C_{11}H_{18}N_5O_{12}P_3$).



Mol	Chain	Residues	Atoms					ZeroOcc	AltConf
			Total	C	N	O	P		
3	A	1	31	11	5	12	3	0	0

- Molecule 4 is AGMATINE (three-letter code: AG2) (formula: $C_5H_{14}N_4$).



Mol	Chain	Residues	Atoms			ZeroOcc	AltConf
			Total	C	N		
4	A	1	9	5	4	0	0

4 Data and refinement statistics

Property	Value	Source
Space group	P 32 2 1	Depositor
Cell constants a, b, c, α , β , γ	130.79Å 130.79Å 87.09Å 90.00° 90.00° 120.00°	Depositor
Resolution (Å)	47.48 – 3.10 47.48 – 3.10	Depositor EDS
% Data completeness (in resolution range)	99.6 (47.48-3.10) 99.5 (47.48-3.10)	Depositor EDS
R_{merge}	0.18	Depositor
R_{sym}	(Not available)	Depositor
$\langle I/\sigma(I) \rangle$ ¹	1.99 (at 3.12Å)	Xtriage
Refinement program	CNS 1.2	Depositor
R, R_{free}	0.250 , 0.303 0.251 , 0.309	Depositor DCC
R_{free} test set	772 reflections (5.11%)	DCC
Wilson B-factor (Å ²)	47.0	Xtriage
Anisotropy	0.472	Xtriage
Bulk solvent k_{sol} (e/Å ³), B_{sol} (Å ²)	0.33 , 16.6	EDS
Estimated twinning fraction	0.075 for -h,-k,l	Xtriage
L-test for twinning	$\langle L \rangle = 0.41$, $\langle L^2 \rangle = 0.24$	Xtriage
Outliers	0 of 15870 reflections	Xtriage
F_o, F_c correlation	0.86	EDS
Total number of atoms	4952	wwPDB-VP
Average B, all atoms (Å ²)	57.0	wwPDB-VP

Xtriage's analysis on translational NCS is as follows: *The largest off-origin peak in the Patterson function is 2.97% of the height of the origin peak. No significant pseudotranslation is detected.*

¹Intensities estimated from amplitudes.

5 Model quality

5.1 Standard geometry

Bond lengths and bond angles in the following residue types are not validated in this section: TPO, APC, AG2

The Z score for a bond length (or angle) is the number of standard deviations the observed value is removed from the expected value. A bond length (or angle) with $|Z| > 5$ is considered an outlier worth inspection. RMSZ is the root-mean-square of all Z scores of the bond lengths (or angles).

Mol	Chain	Bond lengths		Bond angles	
		RMSZ	$\# Z > 5$	RMSZ	$\# Z > 5$
1	A	0.48	0/3301	0.77	2/4456 (0.0%)
2	B	0.60	1/1859 (0.1%)	0.84	4/2895 (0.1%)
All	All	0.53	1/5160 (0.0%)	0.80	6/7351 (0.1%)

Chiral center outliers are detected by calculating the chiral volume of a chiral center and verifying if the center is modelled as a planar moiety or with the opposite hand. A planarity outlier is detected by checking planarity of atoms in a peptide group, atoms in a mainchain group or atoms of a sidechain that are expected to be planar.

Mol	Chain	#Chirality outliers	#Planarity outliers
1	A	0	1
2	B	0	1
All	All	0	2

All (1) bond length outliers are listed below:

Mol	Chain	Res	Type	Atoms	Z	Observed(Å)	Ideal(Å)
2	B	1	G	OP3-P	-6.85	1.52	1.61

All (6) bond angle outliers are listed below:

Mol	Chain	Res	Type	Atoms	Z	Observed(°)	Ideal(°)
2	B	60	U	N1-C1'-C2'	8.73	125.35	114.00
1	A	17	CYS	N-CA-C	-6.38	93.78	111.00
2	B	1	G	OP1-P-OP2	-5.38	111.53	119.60
2	B	35	A	OP1-P-O3'	5.25	116.75	105.20
1	A	191	THR	N-CA-C	-5.09	97.25	111.00
2	B	60	U	C1'-O4'-C4'	-5.08	105.84	109.90

There are no chirality outliers.

All (2) planarity outliers are listed below:

Mol	Chain	Res	Type	Group
1	A	225	TYR	Sidechain
2	B	41	G	Sidechain

5.2 Close contacts

In the following table, the Non-H and H(model) columns list the number of non-hydrogen atoms and hydrogen atoms in the chain respectively. The H(added) column lists the number of hydrogens added by MolProbity. The Clashes column lists the number of clashes within the asymmetric unit, and the number in parentheses is this value normalized per 1000 atoms of the molecule in the chain. The Symm-Clashes column gives symmetry related clashes, in the same way as for the Clashes column.

Mol	Chain	Non-H	H(model)	H(added)	Clashes	Symm-Clashes
1	A	3247	0	3220	332	0
2	B	1665	0	848	98	0
3	A	31	0	14	8	0
4	A	9	0	13	2	0
All	All	4952	0	4095	412	0

Clashscore is defined as the number of clashes calculated for the entry per 1000 atoms (including hydrogens) of the entry. The overall clashscore for this entry is 46.

All (412) close contacts within the same asymmetric unit are listed below.

Atom-1	Atom-2	Distance(Å)	Clash(Å)
1:A:208:THR:HG21	2:B:34:C:C5	1.93	1.02
1:A:401:ARG:NH1	1:A:407:PRO:HB3	1.84	0.91
1:A:328:LYS:HB2	2:B:38:A:N6	1.86	0.91
1:A:321:GLU:HB2	1:A:337:GLN:HB3	1.55	0.89
1:A:352:CYS:HB2	1:A:353:PRO:HA	1.55	0.88
2:B:17:C:H5''	2:B:18:A:H4'	1.56	0.87
2:B:17:C:OP2	2:B:19:G:H5'	1.73	0.87
2:B:21(C):A:O2'	2:B:22:G:H5''	1.75	0.86
1:A:33:LEU:HD11	1:A:74:VAL:HG21	1.58	0.86
1:A:149:VAL:O	1:A:149:VAL:HG12	1.76	0.86
2:B:35:A:O2'	2:B:36:U:OP1	1.92	0.85
1:A:304:THR:HG22	1:A:307:PHE:HB3	1.58	0.84
1:A:352:CYS:HB2	1:A:353:PRO:CA	2.09	0.82
1:A:42:LEU:HB3	1:A:244:THR:HG22	1.61	0.82
1:A:318:ASP:OD1	1:A:341:LEU:HD23	1.80	0.82
1:A:63:VAL:HG22	1:A:64:GLU:H	1.42	0.82
1:A:122:ALA:HB2	1:A:143:ILE:HD13	1.64	0.80

Continued on next page...

Continued from previous page...

Atom-1	Atom-2	Distance(Å)	Clash(Å)
1:A:32:GLU:O	1:A:33:LEU:HD23	1.82	0.79
1:A:208:THR:HG21	2:B:34:C:H5	1.42	0.79
1:A:263:ASN:O	1:A:264:TYR:HB2	1.83	0.79
1:A:344:ILE:HD13	1:A:344:ILE:N	1.98	0.78
1:A:92:PRO:HG2	1:A:136:HIS:HB2	1.66	0.77
1:A:255:GLU:HB3	1:A:269:LEU:HD22	1.65	0.76
1:A:298:CYS:HB3	1:A:333:LEU:HD21	1.65	0.76
1:A:315:ARG:H	1:A:387:ARG:HH22	1.33	0.76
1:A:228:MET:HE2	1:A:239:ARG:HD2	1.68	0.76
1:A:198:CYS:HB3	1:A:306:GLN:OE1	1.86	0.75
2:B:58:A:H4'	2:B:59:A:OP1	1.85	0.75
1:A:304:THR:HG22	1:A:307:PHE:CB	2.16	0.75
1:A:33:LEU:HD12	1:A:71:LEU:HD23	1.69	0.74
1:A:27:GLU:OE2	1:A:238:ARG:HD3	1.86	0.74
1:A:11:ASP:OD1	3:A:421:APC:O1G	2.06	0.74
1:A:70:GLU:O	1:A:74:VAL:HG23	1.87	0.74
1:A:126:ILE:HG21	1:A:133:HIS:CD2	2.23	0.73
1:A:31:ARG:HG3	1:A:32:GLU:HG3	1.69	0.73
2:B:52:G:H1	2:B:62:C:H42	1.37	0.73
1:A:219:GLU:OE2	1:A:410:ARG:NE	2.17	0.72
1:A:338:ILE:HB	1:A:391:PRO:HA	1.71	0.72
2:B:17:C:H2'	2:B:17:C:O2	1.89	0.72
2:B:64:U:H2'	2:B:65:C:H6	1.53	0.72
1:A:80:ILE:O	1:A:80:ILE:HG22	1.88	0.72
1:A:39:PHE:CE2	1:A:241:ILE:HB	2.24	0.72
2:B:17:C:H5''	2:B:18:A:C4'	2.20	0.72
1:A:45:LEU:HD11	1:A:144:GLY:HA2	1.72	0.72
1:A:101:LEU:HD21	1:A:129:TYR:HB3	1.72	0.71
1:A:94:ALA:HB3	1:A:134:LEU:HB2	1.72	0.71
1:A:56:ASN:HA	3:A:421:APC:O1B	1.91	0.71
1:A:101:LEU:HD21	1:A:129:TYR:CB	2.19	0.71
1:A:261:LEU:HD11	1:A:269:LEU:HD11	1.72	0.71
1:A:328:LYS:CB	2:B:38:A:N6	2.53	0.70
1:A:315:ARG:HB2	1:A:387:ARG:NH1	2.07	0.70
1:A:180:PHE:O	1:A:183:MET:HB3	1.91	0.70
1:A:301:PHE:HE2	1:A:332:ASN:ND2	1.89	0.70
1:A:14:ARG:HA	1:A:209:PRO:HG2	1.75	0.69
1:A:141:GLY:O	1:A:143:ILE:N	2.26	0.69
1:A:45:LEU:HD12	3:A:421:APC:H8	1.75	0.68
1:A:362:ALA:O	1:A:366:GLN:HB2	1.94	0.68
1:A:352:CYS:CB	1:A:353:PRO:HA	2.23	0.68
1:A:121:GLU:O	1:A:125:VAL:HG23	1.95	0.67

Continued on next page...

Continued from previous page...

Atom-1	Atom-2	Distance(Å)	Clash(Å)
2:B:3:G:H2'	2:B:4:C:H5''	1.77	0.67
1:A:203:VAL:HG23	4:A:422:AG2:HD1	1.75	0.67
1:A:111:LYS:O	1:A:117:LEU:HD21	1.95	0.67
3:A:421:APC:O2A	3:A:421:APC:O2B	2.12	0.66
1:A:395:GLU:OE1	1:A:408:LEU:HG	1.95	0.66
2:B:17:C:C5'	2:B:18:A:H4'	2.25	0.66
2:B:53:G:O2'	2:B:54:U:H5'	1.94	0.66
1:A:149:VAL:O	1:A:149:VAL:CG1	2.44	0.66
1:A:313:LEU:HB3	1:A:389:LEU:HB2	1.78	0.65
1:A:42:LEU:HB3	1:A:244:THR:CG2	2.27	0.65
1:A:117:LEU:N	1:A:117:LEU:HD23	2.11	0.64
2:B:7:G:O2'	2:B:8:U:OP1	2.14	0.64
1:A:344:ILE:H	1:A:344:ILE:HD13	1.61	0.64
1:A:29:VAL:HG11	1:A:63:VAL:HG21	1.80	0.64
1:A:92:PRO:HG2	1:A:136:HIS:CB	2.28	0.64
2:B:52:G:H2'	2:B:53:G:H8	1.63	0.64
2:B:17:C:H5''	2:B:18:A:O3'	1.98	0.63
2:B:21(C):A:H4'	2:B:22:G:OP1	1.97	0.63
2:B:68:G:H2'	2:B:69:G:O4'	1.98	0.63
1:A:208:THR:HG21	2:B:34:C:C6	2.32	0.63
1:A:328:LYS:HB2	2:B:38:A:H61	1.63	0.63
2:B:64:U:H2'	2:B:65:C:C6	2.33	0.63
1:A:315:ARG:N	1:A:387:ARG:HH22	1.96	0.62
1:A:22:ALA:O	1:A:26:MET:HG3	1.99	0.62
1:A:21:LEU:O	1:A:21:LEU:HD23	2.00	0.62
2:B:17:C:C2'	2:B:17:C:O2	2.48	0.62
2:B:50:A:C5	2:B:51:G:N7	2.68	0.62
1:A:83:ALA:O	1:A:85:LEU:HD12	2.00	0.61
1:A:106:LYS:HG3	1:A:152:GLU:HB2	1.83	0.61
1:A:315:ARG:HG2	1:A:387:ARG:NH2	2.15	0.61
1:A:10:THR:HG22	1:A:18:TPO:OG1	2.00	0.61
1:A:319:VAL:HG12	1:A:339:VAL:HG21	1.82	0.60
2:B:74:C:H2'	2:B:75:C:C6	2.36	0.60
1:A:21:LEU:HD23	1:A:21:LEU:C	2.22	0.60
1:A:246:HIS:O	1:A:247:ALA:HB3	2.02	0.60
1:A:33:LEU:CD1	1:A:71:LEU:HA	2.31	0.60
1:A:176:ASP:O	1:A:177:GLU:C	2.39	0.60
1:A:228:MET:HE1	1:A:239:ARG:HE	1.65	0.60
1:A:177:GLU:O	1:A:179:SER:N	2.34	0.60
1:A:91:ASN:OD1	1:A:137:LYS:HE2	2.01	0.60
2:B:4:C:H42	2:B:69:G:H1	1.50	0.60
1:A:33:LEU:HD11	1:A:74:VAL:CG2	2.30	0.60

Continued on next page...

Continued from previous page...

Atom-1	Atom-2	Distance(Å)	Clash(Å)
1:A:333:LEU:CD2	1:A:333:LEU:H	2.14	0.60
1:A:105:LEU:HD21	1:A:146:LEU:HD22	1.83	0.59
1:A:12:SER:C	1:A:14:ARG:H	2.04	0.59
1:A:18:TPO:O2P	3:A:421:APC:O2B	2.21	0.59
1:A:24:LEU:HD13	1:A:82:HIS:ND1	2.18	0.59
2:B:65:C:O2'	2:B:66:C:H5'	2.02	0.59
1:A:193:ASP:OD1	1:A:401:ARG:NH1	2.34	0.59
1:A:360:GLU:O	1:A:368:PHE:HB3	2.03	0.59
1:A:299:ALA:HB3	1:A:332:ASN:HD22	1.68	0.59
1:A:4:TRP:CZ3	1:A:62:LEU:HB2	2.37	0.58
1:A:17:CYS:HB2	1:A:210:CYS:HB2	1.85	0.58
1:A:388:GLU:O	1:A:390:GLN:HG3	2.03	0.58
2:B:33:U:H2'	2:B:34:C:H5'	1.84	0.58
1:A:44:ARG:HB2	1:A:404:LEU:HD21	1.86	0.58
1:A:27:GLU:CD	1:A:238:ARG:HH11	2.07	0.58
1:A:80:ILE:CG2	1:A:80:ILE:O	2.52	0.58
1:A:390:GLN:HB3	1:A:391:PRO:HD2	1.85	0.58
1:A:100:GLU:H	1:A:100:GLU:CD	2.06	0.58
1:A:253:ILE:HD11	1:A:265:ARG:HH21	1.68	0.57
2:B:63:C:H2'	2:B:64:U:C6	2.40	0.57
1:A:77:GLU:O	1:A:80:ILE:N	2.29	0.57
1:A:234:GLU:HB2	1:A:235:PRO:HD2	1.85	0.57
1:A:297:LYS:O	1:A:330:THR:HG23	2.05	0.57
2:B:23:A:H2'	2:B:24:G:C8	2.39	0.57
1:A:332:ASN:CB	2:B:36:U:O2'	2.52	0.57
1:A:349:ASN:HB2	2:B:69:G:OP2	2.04	0.57
1:A:275:LEU:HD23	1:A:276:GLU:O	2.04	0.57
1:A:9:ASP:HB2	3:A:421:APC:H3'	1.86	0.57
1:A:115:ASP:CG	1:A:116:VAL:H	2.08	0.57
1:A:194:ASN:O	1:A:203:VAL:HG22	2.05	0.56
1:A:320:VAL:HA	1:A:339:VAL:HG23	1.87	0.56
1:A:254:GLY:O	1:A:257:GLU:HG2	2.05	0.56
1:A:345:TRP:CE3	1:A:384:LYS:HB3	2.40	0.56
1:A:45:LEU:HD12	3:A:421:APC:C8	2.34	0.56
1:A:324:GLY:HA2	1:A:334:GLU:HG3	1.86	0.56
1:A:8:ASP:OD2	1:A:57:GLY:O	2.24	0.56
1:A:19:THR:O	1:A:23:VAL:HG23	2.05	0.56
1:A:247:ALA:HB1	1:A:407:PRO:HD2	1.87	0.56
2:B:25:C:C4	2:B:26:G:N7	2.74	0.56
1:A:312:ARG:HG3	1:A:312:ARG:HH11	1.69	0.56
2:B:65:C:H2'	2:B:66:C:H6	1.71	0.56
1:A:189:PRO:O	1:A:190:GLN:C	2.44	0.55

Continued on next page...

Continued from previous page...

Atom-1	Atom-2	Distance(Å)	Clash(Å)
2:B:35:A:HO2'	2:B:36:U:P	2.23	0.55
1:A:164:ARG:HH21	1:A:173:ARG:HA	1.71	0.55
1:A:344:ILE:CD1	1:A:387:ARG:HD2	2.36	0.55
1:A:160:LEU:HB2	1:A:224:LEU:HD22	1.89	0.55
1:A:301:PHE:CE2	1:A:332:ASN:ND2	2.73	0.55
1:A:175:TYR:CE1	1:A:177:GLU:HG2	2.40	0.55
1:A:280:ILE:HG12	1:A:284:HIS:HB2	1.87	0.55
1:A:344:ILE:CD1	1:A:344:ILE:N	2.70	0.55
1:A:81:GLU:HG2	1:A:82:HIS:HD2	1.71	0.55
2:B:65:C:H2'	2:B:66:C:C6	2.42	0.55
2:B:9:A:H5'	2:B:10:G:OP2	2.07	0.55
1:A:11:ASP:OD2	1:A:18:TPO:O3P	2.26	0.54
1:A:166:PRO:HA	1:A:169:PHE:CE1	2.43	0.54
1:A:44:ARG:H	1:A:245:ASN:HD21	1.53	0.54
2:B:66:C:C2'	2:B:67:G:H5'	2.38	0.54
1:A:312:ARG:HG3	1:A:312:ARG:NH1	2.23	0.54
2:B:17:C:C4'	2:B:18:A:H4'	2.37	0.54
2:B:50:A:H2	2:B:65:C:C2	2.26	0.54
1:A:338:ILE:CG2	1:A:391:PRO:HA	2.37	0.54
1:A:181:PHE:O	1:A:185:TYR:HB2	2.07	0.54
1:A:338:ILE:CB	1:A:391:PRO:HA	2.37	0.54
1:A:187:LEU:O	1:A:190:GLN:HB2	2.08	0.54
1:A:299:ALA:O	1:A:333:LEU:HD23	2.07	0.54
2:B:32:C:H2'	2:B:33:U:H5'	1.89	0.54
2:B:13:U:O2'	2:B:14:A:H5''	2.07	0.54
2:B:50:A:N6	2:B:51:G:O6	2.42	0.53
1:A:25:ALA:O	1:A:29:VAL:HG23	2.08	0.53
1:A:335:LYS:HD2	1:A:408:LEU:HD21	1.90	0.53
2:B:22:G:H2'	2:B:23:A:H5'	1.90	0.53
1:A:116:VAL:C	1:A:117:LEU:HD23	2.27	0.53
1:A:176:ASP:HB3	1:A:232:LYS:HB2	1.90	0.53
1:A:345:TRP:CZ3	1:A:384:LYS:HB3	2.44	0.53
2:B:32:C:C2'	2:B:33:U:H5'	2.39	0.53
2:B:3:G:C2'	2:B:4:C:H5''	2.39	0.53
1:A:106:LYS:HA	1:A:150:GLY:O	2.09	0.53
1:A:228:MET:CE	1:A:239:ARG:HD2	2.38	0.53
1:A:253:ILE:H	1:A:267:TYR:HA	1.73	0.53
2:B:57:G:H5'	2:B:58:A:OP2	2.09	0.53
1:A:191:THR:HG22	1:A:223:ALA:HB1	1.91	0.52
1:A:333:LEU:H	1:A:333:LEU:HD23	1.73	0.52
1:A:173:ARG:HH11	1:A:173:ARG:HG3	1.75	0.52
1:A:333:LEU:CD2	1:A:333:LEU:N	2.72	0.52

Continued on next page...

Continued from previous page...

Atom-1	Atom-2	Distance(Å)	Clash(Å)
1:A:393:PHE:N	1:A:415:GLY:O	2.38	0.52
2:B:4:C:H6	2:B:4:C:H5'	1.74	0.52
1:A:28:ARG:HG2	1:A:32:GLU:OE2	2.09	0.52
1:A:67:ASP:OD2	1:A:70:GLU:HG3	2.10	0.52
1:A:112:ALA:HB2	1:A:117:LEU:HD11	1.91	0.52
1:A:402:ARG:HB3	1:A:405:SER:HB2	1.90	0.52
1:A:401:ARG:HH12	1:A:407:PRO:HB3	1.74	0.52
2:B:4:C:H6	2:B:4:C:C5'	2.22	0.52
1:A:72:VAL:CG1	1:A:134:LEU:HD11	2.40	0.52
1:A:328:LYS:HD2	2:B:38:A:N7	2.25	0.52
1:A:101:LEU:HD21	1:A:129:TYR:CG	2.45	0.52
1:A:166:PRO:HA	1:A:169:PHE:CZ	2.45	0.52
1:A:192:PHE:CD1	1:A:193:ASP:HB2	2.45	0.51
1:A:328:LYS:HB2	2:B:38:A:H62	1.70	0.51
1:A:389:LEU:C	1:A:389:LEU:HD13	2.31	0.51
1:A:362:ALA:HA	2:B:71:C:H41	1.75	0.51
1:A:273:VAL:CG2	1:A:318:ASP:HB2	2.41	0.51
1:A:347:GLU:C	1:A:348:LYS:HG3	2.31	0.51
1:A:59:VAL:HG12	1:A:60:SER:N	2.25	0.51
1:A:18:TPO:O3P	3:A:421:APC:O1A	2.29	0.51
1:A:233:THR:OG1	1:A:234:GLU:N	2.42	0.51
2:B:49:G:N2	2:B:66:C:C2	2.78	0.51
1:A:301:PHE:O	1:A:304:THR:HB	2.11	0.51
2:B:3:G:C3'	2:B:4:C:H5''	2.41	0.51
1:A:319:VAL:HG12	1:A:339:VAL:CG2	2.41	0.51
1:A:253:ILE:N	1:A:266:SER:O	2.43	0.51
2:B:47:U:O2'	2:B:48:C:OP2	2.19	0.51
1:A:263:ASN:O	1:A:264:TYR:CB	2.55	0.51
1:A:270:ARG:CZ	1:A:321:GLU:OE2	2.59	0.50
1:A:313:LEU:CB	1:A:389:LEU:HB2	2.40	0.50
1:A:389:LEU:HD22	1:A:390:GLN:N	2.26	0.50
1:A:43:ILE:HG21	1:A:151:ALA:HB2	1.91	0.50
1:A:299:ALA:HB3	1:A:332:ASN:ND2	2.27	0.50
1:A:190:GLN:HA	1:A:190:GLN:OE1	2.11	0.50
2:B:15:G:H5''	2:B:16:C:OP2	2.12	0.50
2:B:23:A:H2'	2:B:24:G:H8	1.76	0.50
1:A:305:LYS:O	1:A:307:PHE:N	2.45	0.50
2:B:20:G:N2	2:B:57:G:H1'	2.27	0.50
1:A:345:TRP:N	1:A:345:TRP:CD1	2.79	0.50
1:A:4:TRP:HB2	1:A:97:VAL:HG22	1.93	0.50
1:A:228:MET:CE	1:A:239:ARG:HE	2.25	0.50
1:A:194:ASN:C	1:A:203:VAL:HG22	2.33	0.49

Continued on next page...

Continued from previous page...

Atom-1	Atom-2	Distance(Å)	Clash(Å)
1:A:164:ARG:CZ	1:A:173:ARG:HG2	2.42	0.49
1:A:17:CYS:SG	1:A:19:THR:HG23	2.52	0.49
1:A:286:PHE:CZ	2:B:38:A:C2	3.00	0.49
1:A:103:VAL:C	1:A:105:LEU:H	2.15	0.49
1:A:3:VAL:HG13	1:A:63:VAL:HG12	1.94	0.49
1:A:122:ALA:O	1:A:126:ILE:HG13	2.13	0.49
1:A:76:ASN:HB2	1:A:134:LEU:HD21	1.94	0.49
1:A:2:ARG:NH1	1:A:99:GLU:OE2	2.45	0.49
2:B:37:A:H4'	2:B:38:A:OP2	2.12	0.48
2:B:21(C):A:C2'	2:B:22:G:H5''	2.42	0.48
1:A:276:GLU:OE2	1:A:316:LYS:N	2.35	0.48
1:A:313:LEU:HD12	1:A:389:LEU:H	1.79	0.48
2:B:36:U:H4'	2:B:37:A:O5'	2.13	0.48
1:A:288:GLU:HG2	1:A:297:LYS:HB2	1.96	0.48
1:A:301:PHE:O	1:A:308:ARG:HD2	2.13	0.48
2:B:7:G:C2	2:B:67:G:C2	3.02	0.48
1:A:279:ASP:N	1:A:279:ASP:OD1	2.47	0.48
2:B:33:U:C2'	2:B:34:C:H5'	2.43	0.48
2:B:53:G:C2'	2:B:54:U:H5'	2.44	0.48
1:A:389:LEU:HD22	1:A:390:GLN:H	1.79	0.48
1:A:360:GLU:OE1	1:A:361:SER:O	2.32	0.48
1:A:139:GLY:C	1:A:141:GLY:H	2.16	0.47
1:A:43:ILE:HG21	1:A:151:ALA:CB	2.44	0.47
1:A:113:ILE:HD12	1:A:250:MET:HE2	1.95	0.47
1:A:63:VAL:HG22	1:A:64:GLU:N	2.19	0.47
1:A:4:TRP:HB3	1:A:149:VAL:CG1	2.44	0.47
1:A:4:TRP:CE3	1:A:62:LEU:HB2	2.49	0.47
1:A:344:ILE:HD11	1:A:387:ARG:HD2	1.97	0.47
1:A:43:ILE:HG23	1:A:245:ASN:ND2	2.29	0.47
1:A:43:ILE:HG23	1:A:245:ASN:HD22	1.79	0.47
1:A:253:ILE:HG21	1:A:258:VAL:HG21	1.96	0.47
1:A:274:THR:OG1	1:A:275:LEU:N	2.48	0.47
1:A:161:ILE:HG22	1:A:163:TYR:CE1	2.50	0.47
1:A:188:TYR:CD2	1:A:189:PRO:N	2.83	0.47
1:A:407:PRO:HG2	1:A:410:ARG:HG3	1.96	0.46
1:A:278:TYR:O	1:A:285:VAL:HA	2.15	0.46
2:B:10:G:OP2	2:B:10:G:H3'	2.14	0.46
1:A:304:THR:CG2	1:A:307:PHE:HB3	2.38	0.46
1:A:122:ALA:CB	1:A:143:ILE:HD13	2.42	0.46
2:B:11:C:C2	2:B:12:U:C5	3.04	0.46
1:A:313:LEU:O	1:A:387:ARG:NH2	2.47	0.46
1:A:388:GLU:O	1:A:389:LEU:C	2.53	0.46

Continued on next page...

Continued from previous page...

Atom-1	Atom-2	Distance(Å)	Clash(Å)
1:A:29:VAL:CG1	1:A:63:VAL:HG21	2.44	0.46
1:A:173:ARG:NH1	1:A:173:ARG:HG3	2.31	0.46
2:B:74:C:N3	2:B:75:C:C4	2.84	0.46
1:A:328:LYS:O	1:A:329:ASP:HB2	2.16	0.46
1:A:361:SER:HA	1:A:368:PHE:HD2	1.80	0.46
1:A:191:THR:CG2	1:A:223:ALA:HB1	2.46	0.45
1:A:37:ILE:HB	1:A:62:LEU:CD1	2.46	0.45
1:A:203:VAL:CG2	4:A:422:AG2:HD1	2.42	0.45
2:B:14:A:H5'	2:B:14:A:H8	1.81	0.45
1:A:214:TYR:HD2	1:A:216:ILE:HG13	1.81	0.45
1:A:49:ILE:HA	1:A:50:PRO:HD3	1.74	0.45
1:A:333:LEU:N	1:A:333:LEU:HD22	2.31	0.45
2:B:66:C:H2'	2:B:67:G:H5'	1.99	0.45
1:A:3:VAL:HG13	1:A:63:VAL:CG1	2.46	0.45
1:A:228:MET:HE1	1:A:239:ARG:NE	2.30	0.45
1:A:178:GLU:O	1:A:182:ASP:OD2	2.34	0.45
1:A:30:GLU:OE1	1:A:36:VAL:HG23	2.17	0.45
1:A:139:GLY:C	1:A:141:GLY:N	2.70	0.45
1:A:341:LEU:HD21	1:A:389:LEU:HD12	1.99	0.45
1:A:270:ARG:O	1:A:291:THR:HG22	2.17	0.45
1:A:320:VAL:HG12	1:A:338:ILE:HA	1.99	0.45
1:A:192:PHE:O	1:A:194:ASN:ND2	2.50	0.45
1:A:95:VAL:HG12	1:A:97:VAL:HG12	1.98	0.45
1:A:249:ASP:OD2	1:A:252:LEU:HD11	2.17	0.45
1:A:395:GLU:CD	1:A:408:LEU:HG	2.37	0.45
1:A:351:ILE:CG1	1:A:352:CYS:N	2.80	0.44
1:A:318:ASP:OD1	1:A:341:LEU:CD2	2.60	0.44
1:A:159:GLU:HG2	1:A:161:ILE:HG13	1.98	0.44
1:A:347:GLU:HB3	1:A:380:LYS:HD3	1.99	0.44
1:A:93:GLY:HA2	1:A:134:LEU:O	2.18	0.44
1:A:255:GLU:HB3	1:A:269:LEU:CD2	2.41	0.44
1:A:129:TYR:O	1:A:130:PHE:C	2.55	0.44
1:A:106:LYS:CG	1:A:152:GLU:HB2	2.46	0.44
2:B:51:G:C2	2:B:52:G:C4	3.05	0.44
1:A:361:SER:HA	1:A:368:PHE:CD2	2.52	0.44
1:A:245:ASN:O	1:A:248:THR:HG23	2.17	0.44
2:B:30:G:N2	2:B:31:G:H1'	2.32	0.44
1:A:208:THR:CG2	2:B:34:C:H5	2.21	0.44
1:A:192:PHE:HD1	1:A:193:ASP:HB2	1.83	0.44
1:A:304:THR:HG21	1:A:307:PHE:CD2	2.53	0.44
1:A:302:GLU:C	1:A:304:THR:N	2.69	0.44
2:B:50:A:H2'	2:B:51:G:H8	1.82	0.44

Continued on next page...

Continued from previous page...

Atom-1	Atom-2	Distance(Å)	Clash(Å)
1:A:113:ILE:CD1	1:A:250:MET:HE2	2.48	0.44
2:B:18:A:H2'	2:B:19:G:OP1	2.17	0.44
1:A:37:ILE:HB	1:A:62:LEU:HD12	2.00	0.44
1:A:272:ARG:HA	1:A:318:ASP:O	2.17	0.44
1:A:45:LEU:CD1	1:A:144:GLY:HA2	2.45	0.44
1:A:286:PHE:CZ	2:B:38:A:N3	2.86	0.43
1:A:187:LEU:HD13	1:A:191:THR:HG21	2.00	0.43
1:A:297:LYS:HZ3	2:B:38:A:H2	1.65	0.43
2:B:22:G:C2'	2:B:23:A:H5'	2.48	0.43
1:A:408:LEU:C	1:A:410:ARG:N	2.72	0.43
1:A:326:MET:HA	1:A:330:THR:O	2.18	0.43
1:A:95:VAL:HG12	1:A:96:PHE:N	2.34	0.43
1:A:366:GLN:O	1:A:367:GLY:O	2.36	0.43
1:A:188:TYR:CD2	1:A:188:TYR:C	2.92	0.43
1:A:249:ASP:OD2	1:A:252:LEU:CD1	2.66	0.43
1:A:12:SER:C	1:A:14:ARG:N	2.71	0.43
1:A:161:ILE:HD12	1:A:242:PHE:CD1	2.53	0.43
1:A:4:TRP:CH2	1:A:62:LEU:HB2	2.53	0.43
1:A:133:HIS:O	1:A:134:LEU:HD12	2.18	0.43
1:A:45:LEU:HB2	1:A:56:ASN:ND2	2.34	0.43
1:A:257:GLU:O	1:A:258:VAL:HG22	2.18	0.43
1:A:270:ARG:HB2	1:A:321:GLU:OE2	2.18	0.43
1:A:12:SER:OG	1:A:13:SER:N	2.51	0.43
1:A:408:LEU:O	1:A:416:ARG:NH1	2.52	0.43
1:A:273:VAL:HG21	1:A:318:ASP:HB2	2.00	0.43
1:A:344:ILE:HD11	1:A:387:ARG:HG2	2.01	0.43
1:A:98:ASP:O	1:A:99:GLU:C	2.56	0.43
1:A:123:LEU:HA	1:A:123:LEU:HD23	1.90	0.43
1:A:4:TRP:HB3	1:A:149:VAL:HG13	2.01	0.43
2:B:20:G:C4	2:B:57:G:N2	2.86	0.43
1:A:164:ARG:NH2	1:A:173:ARG:HA	2.32	0.43
1:A:351:ILE:HG12	1:A:352:CYS:N	2.34	0.43
1:A:163:TYR:N	1:A:163:TYR:CD1	2.87	0.43
2:B:52:G:O2'	2:B:53:G:H5'	2.19	0.42
2:B:66:C:N4	2:B:67:G:C6	2.87	0.42
2:B:8:U:H5''	2:B:9:A:OP1	2.19	0.42
1:A:314:LEU:HD21	1:A:338:ILE:HD11	2.01	0.42
1:A:253:ILE:HB	1:A:267:TYR:CD2	2.54	0.42
1:A:204:CYS:HB2	1:A:215:GLY:O	2.19	0.42
1:A:311:ILE:HD13	1:A:311:ILE:HA	1.85	0.42
1:A:328:LYS:CB	2:B:38:A:H62	2.28	0.42
1:A:28:ARG:HA	1:A:32:GLU:OE2	2.19	0.42

Continued on next page...

Continued from previous page...

Atom-1	Atom-2	Distance(Å)	Clash(Å)
1:A:348:LYS:HB2	1:A:381:LEU:HB2	2.02	0.42
1:A:279:ASP:O	1:A:280:ILE:HG22	2.19	0.42
1:A:195:VAL:HG12	1:A:202:VAL:HA	2.00	0.42
2:B:22:G:C5'	2:B:22:G:H8	2.32	0.42
1:A:82:HIS:N	1:A:82:HIS:CD2	2.88	0.42
2:B:54:U:C4	2:B:55:U:N3	2.88	0.42
1:A:141:GLY:C	1:A:143:ILE:N	2.72	0.42
1:A:20:TYR:CE1	1:A:24:LEU:HD11	2.54	0.42
1:A:46:ASN:HB3	1:A:49:ILE:HG12	2.02	0.42
1:A:397:PRO:HA	1:A:398:PRO:HD3	1.91	0.42
1:A:291:THR:O	1:A:294:GLY:N	2.53	0.42
1:A:41:ARG:HD2	1:A:153:LEU:HD11	2.02	0.42
1:A:156:PHE:CD1	1:A:156:PHE:C	2.92	0.42
1:A:189:PRO:HB3	1:A:409:ILE:HG12	2.02	0.42
1:A:189:PRO:O	1:A:192:PHE:HB3	2.20	0.42
1:A:95:VAL:HG13	1:A:131:ILE:HG21	2.02	0.42
1:A:16:MET:CE	1:A:20:TYR:HD1	2.33	0.42
1:A:246:HIS:O	1:A:247:ALA:CB	2.67	0.41
1:A:327:LYS:HD3	2:B:37:A:OP2	2.20	0.41
1:A:33:LEU:CD1	1:A:71:LEU:HD23	2.44	0.41
1:A:269:LEU:N	1:A:269:LEU:HD23	2.34	0.41
2:B:17:C:H4'	2:B:18:A:H4'	2.02	0.41
1:A:160:LEU:CD1	1:A:228:MET:HB2	2.49	0.41
1:A:44:ARG:N	1:A:245:ASN:HD21	2.17	0.41
1:A:119:ILE:HD11	1:A:140:ARG:HG3	2.02	0.41
1:A:207:ASN:N	2:B:34:C:OP1	2.34	0.41
1:A:188:TYR:CG	1:A:189:PRO:HA	2.55	0.41
1:A:304:THR:HG23	1:A:396:VAL:HG12	2.03	0.41
1:A:348:LYS:HA	2:B:69:G:OP1	2.20	0.41
1:A:91:ASN:HB3	1:A:139:GLY:H	1.86	0.41
1:A:8:ASP:OD2	1:A:18:TPO:O2P	2.38	0.41
2:B:67:G:C6	2:B:68:G:N7	2.89	0.41
1:A:192:PHE:C	1:A:192:PHE:CD1	2.94	0.41
2:B:21(A):U:H5'	2:B:21(B):C:P	2.61	0.41
1:A:406:LYS:HA	1:A:407:PRO:HD2	1.95	0.41
2:B:24:G:O2'	2:B:25:C:H5'	2.21	0.41
2:B:52:G:H2'	2:B:53:G:C8	2.49	0.41
1:A:268:ARG:C	1:A:269:LEU:HD23	2.41	0.41
1:A:175:TYR:CD2	1:A:175:TYR:N	2.89	0.41
1:A:113:ILE:CD1	1:A:250:MET:CE	2.99	0.41
1:A:304:THR:HG23	1:A:396:VAL:CG1	2.51	0.41
1:A:305:LYS:C	1:A:307:PHE:H	2.24	0.40

Continued on next page...

Continued from previous page...

Atom-1	Atom-2	Distance(Å)	Clash(Å)
1:A:341:LEU:HA	1:A:341:LEU:HD23	1.87	0.40
1:A:213:LEU:HD11	1:A:233:THR:OG1	2.20	0.40
1:A:349:ASN:OD1	1:A:380:LYS:HE3	2.22	0.40
2:B:13:U:C2'	2:B:14:A:H5''	2.51	0.40
2:B:54:U:N3	2:B:55:U:C2	2.89	0.40
1:A:315:ARG:HD3	1:A:315:ARG:HA	1.80	0.40
1:A:198:CYS:C	1:A:200:ASP:H	2.24	0.40
1:A:16:MET:CE	1:A:20:TYR:CD1	3.04	0.40
1:A:213:LEU:HD13	1:A:214:TYR:HD1	1.86	0.40
2:B:25:C:H2'	2:B:26:G:O4'	2.21	0.40
1:A:19:THR:HA	1:A:59:VAL:HG21	2.04	0.40
1:A:330:THR:HG22	1:A:331:ILE:N	2.36	0.40
1:A:1:MET:O	1:A:64:GLU:HA	2.21	0.40
1:A:283:GLY:HA3	1:A:308:ARG:HH21	1.87	0.40
1:A:333:LEU:HD12	1:A:336:ILE:HB	2.04	0.40
1:A:315:ARG:HB2	1:A:387:ARG:HH12	1.81	0.40
1:A:315:ARG:O	1:A:316:LYS:C	2.60	0.40

There are no symmetry-related clashes.

5.3 Torsion angles

5.3.1 Protein backbone ⓘ

In the following table, the Percentiles column shows the percent Ramachandran outliers of the chain as a percentile score with respect to all X-ray entries followed by that with respect to entries of similar resolution. The Analysed column shows the number of residues for which the backbone conformation was analysed, and the total number of residues.

Mol	Chain	Analysed	Favoured	Allowed	Outliers	Percentiles	
1	A	393/440 (89%)	316 (80%)	55 (14%)	22 (6%)	3	19

All (22) Ramachandran outliers are listed below:

Mol	Chain	Res	Type
1	A	14	ARG
1	A	142	LEU
1	A	177	GLU
1	A	178	GLU
1	A	190	GLN
1	A	306	GLN

Continued on next page...

Continued from previous page...

Mol	Chain	Res	Type
1	A	367	GLY
1	A	9	ASP
1	A	101	LEU
1	A	301	PHE
1	A	84	MET
1	A	104	LYS
1	A	213	LEU
1	A	264	TYR
1	A	352	CYS
1	A	403	HIS
1	A	193	ASP
1	A	237	ASP
1	A	13	SER
1	A	212	VAL
1	A	339	VAL
1	A	398	PRO

5.3.2 Protein sidechains ⓘ

In the following table, the Percentiles column shows the percent sidechain outliers of the chain as a percentile score with respect to all X-ray entries followed by that with respect to entries of similar resolution. The Analysed column shows the number of residues for which the sidechain conformation was analysed, and the total number of residues.

Mol	Chain	Analysed	Rotameric	Outliers	Percentiles	
1	A	351/384 (91%)	317 (90%)	34 (10%)	12	41

All (34) residues with a non-rotameric sidechain are listed below:

Mol	Chain	Res	Type
1	A	13	SER
1	A	19	THR
1	A	84	MET
1	A	101	LEU
1	A	110	ASP
1	A	117	LEU
1	A	160	LEU
1	A	171	THR
1	A	202	VAL
1	A	208	THR
1	A	213	LEU
1	A	233	THR

Continued on next page...

Continued from previous page...

Mol	Chain	Res	Type
1	A	238	ARG
1	A	240	MET
1	A	256	GLU
1	A	258	VAL
1	A	263	ASN
1	A	273	VAL
1	A	274	THR
1	A	279	ASP
1	A	308	ARG
1	A	312	ARG
1	A	313	LEU
1	A	333	LEU
1	A	341	LEU
1	A	344	ILE
1	A	345	TRP
1	A	352	CYS
1	A	360	GLU
1	A	379	GLU
1	A	389	LEU
1	A	398	PRO
1	A	399	SER
1	A	405	SER

Some sidechains can be flipped to improve hydrogen bonding and reduce clashes. All (6) such sidechains are listed below:

Mol	Chain	Res	Type
1	A	56	ASN
1	A	118	GLN
1	A	133	HIS
1	A	263	ASN
1	A	309	ASN
1	A	337	GLN

5.3.3 RNA ⓘ

Mol	Chain	Analysed	Backbone Outliers	Pucker Outliers
2	B	77/78 (98%)	24 (31%)	11 (14%)

All (24) RNA backbone outliers are listed below:

Mol	Chain	Res	Type
2	B	4	C
2	B	8	U
2	B	9	A
2	B	10	G
2	B	14	A
2	B	16	C
2	B	17	C
2	B	18	A
2	B	20	G
2	B	21(A)	U
2	B	21(B)	C
2	B	21(C)	A
2	B	22	G
2	B	33	U
2	B	34	C
2	B	35	A
2	B	36	U
2	B	37	A
2	B	38	A
2	B	39	C
2	B	42	G
2	B	48	C
2	B	57	G
2	B	59	A

All (11) RNA pucker outliers are listed below:

Mol	Chain	Res	Type
2	B	7	G
2	B	9	A
2	B	21(C)	A
2	B	35	A
2	B	36	U
2	B	37	A
2	B	38	A
2	B	47	U
2	B	48	C
2	B	58	A
2	B	60	U

5.4 Non-standard residues in protein, DNA, RNA chains ⓘ

1 non-standard protein/DNA/RNA residue is modelled in this entry.

In the following table, the Counts columns list the number of bonds (or angles) for which Mogul statistics could be retrieved, the number of bonds (or angles) that are observed in the model and the number of bonds (or angles) that are defined in the chemical component dictionary. The Link column lists molecule types, if any, to which the group is linked. The Z score for a bond length (or angle) is the number of standard deviations the observed value is removed from the expected value. A bond length (or angle) with $|Z| > 2$ is considered an outlier worth inspection. RMSZ is the root-mean-square of all Z scores of the bond lengths (or angles).

Mol	Type	Chain	Res	Link	Bond lengths			Bond angles		
					Counts	RMSZ	$\# Z > 2$	Counts	RMSZ	$\# Z > 2$
1	TPO	A	18	1	10,10,11	5.74	2 (20%)	12,14,16	1.16	2 (16%)

In the following table, the Chirals column lists the number of chiral outliers, the number of chiral centers analysed, the number of these observed in the model and the number defined in the chemical component dictionary. Similar counts are reported in the Torsion and Rings columns. '-' means no outliers of that kind were identified.

Mol	Type	Chain	Res	Link	Chirals	Torsions	Rings
1	TPO	A	18	1	-	0/9/11/13	0/0/0/0

All (2) bond length outliers are listed below:

Mol	Chain	Res	Type	Atoms	Z	Observed(Å)	Ideal(Å)
1	A	18	TPO	O-C	17.54	1.23	1.11
1	A	18	TPO	CA-C	3.42	1.54	1.48

All (2) bond angle outliers are listed below:

Mol	Chain	Res	Type	Atoms	Z	Observed(°)	Ideal(°)
1	A	18	TPO	OG1-P-O1P	2.44	113.60	106.79
1	A	18	TPO	OG1-CB-CA	2.13	111.11	107.55

There are no chirality outliers.

There are no torsion outliers.

There are no ring outliers.

5.5 Carbohydrates ⓘ

There are no carbohydrates in this entry.

5.6 Ligand geometry

2 ligands are modelled in this entry.

In the following table, the Counts columns list the number of bonds (or angles) for which Mogul statistics could be retrieved, the number of bonds (or angles) that are observed in the model and the number of bonds (or angles) that are defined in the chemical component dictionary. The Link column lists molecule types, if any, to which the group is linked. The Z score for a bond length (or angle) is the number of standard deviations the observed value is removed from the expected value. A bond length (or angle) with $|Z| > 2$ is considered an outlier worth inspection. RMSZ is the root-mean-square of all Z scores of the bond lengths (or angles).

Mol	Type	Chain	Res	Link	Bond lengths			Bond angles		
					Counts	RMSZ	# $ Z > 2$	Counts	RMSZ	# $ Z > 2$
3	APC	A	421	-	33,33,33	1.34	5 (15%)	52,52,52	2.72	17 (32%)
4	AG2	A	422	-	8,8,8	0.38	0	8,8,8	0.72	0

In the following table, the Chirals column lists the number of chiral outliers, the number of chiral centers analysed, the number of these observed in the model and the number defined in the chemical component dictionary. Similar counts are reported in the Torsion and Rings columns. '-' means no outliers of that kind were identified.

Mol	Type	Chain	Res	Link	Chirals	Torsions	Rings
3	APC	A	421	-	-	0/20/38/38	0/1/3/3
4	AG2	A	422	-	-	0/6/6/6	0/0/0/0

All (5) bond length outliers are listed below:

Mol	Chain	Res	Type	Atoms	Z	Observed(Å)	Ideal(Å)
3	A	421	APC	PB-O2B	-3.15	1.48	1.56
3	A	421	APC	PA-O2A	-3.09	1.48	1.56
3	A	421	APC	C4-N9	-2.87	1.33	1.37
3	A	421	APC	PG-O2G	2.06	1.62	1.54
3	A	421	APC	PG-O3G	2.04	1.62	1.54

All (17) bond angle outliers are listed below:

Mol	Chain	Res	Type	Atoms	Z	Observed(°)	Ideal(°)
3	A	421	APC	PA-C3A-PB	-9.29	104.26	117.62
3	A	421	APC	N3-C2-N1	-8.69	121.45	128.71
3	A	421	APC	O1B-PB-C3A	-5.53	95.61	109.49
3	A	421	APC	PG-O3B-PB	-5.03	114.64	131.81
3	A	421	APC	O2B-PB-O1B	4.57	125.16	110.93
3	A	421	APC	O3B-PB-C3A	-4.50	92.44	106.62
3	A	421	APC	N3-C4-N9	4.16	132.94	125.43

Continued on next page...

Continued from previous page...

Mol	Chain	Res	Type	Atoms	Z	Observed(°)	Ideal(°)
3	A	421	APC	O2B-PB-O3B	4.15	117.42	107.18
3	A	421	APC	C4'-O4'-C1'	-3.66	105.77	109.75
3	A	421	APC	C3'-C2'-C1'	-2.87	96.41	100.91
3	A	421	APC	O2A-PA-O1A	2.82	119.71	110.93
3	A	421	APC	O4'-C1'-C2'	-2.63	102.74	106.77
3	A	421	APC	C5-C4-N3	-2.58	120.09	125.70
3	A	421	APC	O2B-PB-C3A	-2.43	101.02	106.61
3	A	421	APC	O4'-C1'-N9	2.36	110.64	108.44
3	A	421	APC	C4-C5-N7	-2.27	107.58	109.52
3	A	421	APC	C2-N3-C4	2.15	120.14	114.01

There are no chirality outliers.

There are no torsion outliers.

There are no ring outliers.

5.7 Other polymers ⓘ

There are no such residues in this entry.

5.8 Polymer linkage issues

There are no chain breaks in this entry.

6 Fit of model and data ⓘ

6.1 Protein, DNA and RNA chains ⓘ

In the following table, the column labelled ‘#RSRZ> 2’ contains the number (and percentage) of RSRZ outliers, followed by percent RSRZ outliers for the chain as percentile scores relative to all X-ray entries and entries of similar resolution. The OWAB column contains the minimum, median, 95th percentile and maximum values of the occupancy-weighted average B-factor per residue. The column labelled ‘Q< 0.9’ lists the number of (and percentage) of residues with an average occupancy less than 0.9.

Mol	Chain	Analysed	<RSRZ>	#RSRZ>2	OWAB(Å ²)	Q<0.9
1	A	402/440 (91%)	-0.10	0 100 100	21, 46, 71, 80	0
2	B	78/78 (100%)	0.59	8 (10%) 7 2	40, 70, 123, 148	0
All	All	480/518 (92%)	0.01	8 (1%) 67 15	21, 48, 97, 148	0

All (8) RSRZ outliers are listed below:

Mol	Chain	Res	Type	RSRZ
2	B	21(B)	C	5.9
2	B	76	A	4.6
2	B	75	C	4.2
2	B	58	A	2.5
2	B	51	G	2.4
2	B	21(A)	U	2.3
2	B	55	U	2.2
2	B	18	A	2.1

6.2 Non-standard residues in protein, DNA, RNA chains ⓘ

In the following table, the Atoms column lists the number of modelled atoms in the group and the number defined in the chemical component dictionary. LLDF column lists the quality of electron density of the group with respect to its neighbouring residues in protein, DNA or RNA chains. The B-factors column lists the minimum, median, 95th percentile and maximum values of B factors of atoms in the group. The column labelled ‘Q< 0.9’ lists the number of atoms with occupancy less than 0.9.

Mol	Type	Chain	Res	Atoms	RSR	LLDF	B-factors(Å ²)	Q<0.9
1	TPO	A	18	11/12	0.20	-	45,47,48,52	0

6.3 Carbohydrates

There are no carbohydrates in this entry.

6.4 Ligands

In the following table, the Atoms column lists the number of modelled atoms in the group and the number defined in the chemical component dictionary. LLDF column lists the quality of electron density of the group with respect to its neighbouring residues in protein, DNA or RNA chains. The B-factors column lists the minimum, median, 95th percentile and maximum values of B factors of atoms in the group. The column labelled 'Q< 0.9' lists the number of atoms with occupancy less than 0.9.

Mol	Type	Chain	Res	Atoms	RSR	LLDF	B-factors(\AA^2)	Q<0.9
4	AG2	A	422	9/9	0.21	-	34,38,41,42	0
3	APC	A	421	31/31	0.20	-	34,41,59,61	0

6.5 Other polymers

There are no such residues in this entry.