



Full wwPDB X-ray Structure Validation Report ⓘ

Mar 1, 2014 – 02:20 AM GMT

PDB ID : 9API
Title : THE S VARIANT OF HUMAN ALPHA1-ANTITRYPSIN, STRUCTURE
AND IMPLICATIONS FOR FUNCTION AND METABOLISM
Authors : Loebermann, H.; Tokuoka, R.; Deisenhofer, J.; Huber, R.
Deposited on : 1988-09-08
Resolution : 3.00 Å(reported)

This is a full wwPDB validation report for a publicly released PDB entry.
We welcome your comments at validation@mail.wwpdb.org
A user guide is available at <http://wwpdb.org/ValidationPDFNotes.html>

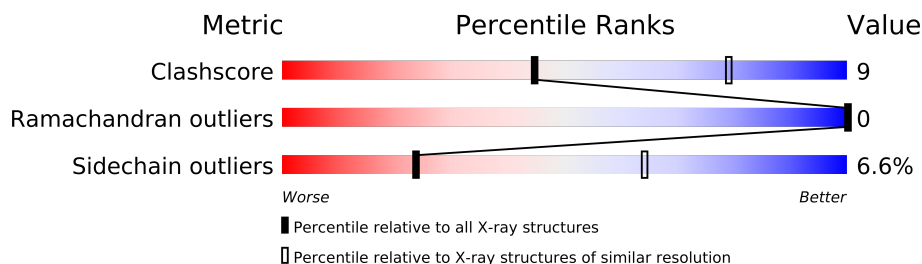
The following versions of software and data (see [references](#)) were used in the production of this report:

MolProbity : 4.02b-467
Mogul : 1.15 2013
Xtriage (Phenix) : **NOT EXECUTED**
EDS : **NOT EXECUTED**
Percentile statistics : 21963
Ideal geometry (proteins) : Engh & Huber (2001)
Ideal geometry (DNA, RNA) : Parkinson et. al. (1996)
Validation Pipeline (wwPDB-VP) : stable22683

1 Overall quality at a glance

The reported resolution of this entry is 3.00 Å.

Percentile scores (ranging between 0-100) for global validation metrics of the entry are shown in the following graphic. The table shows the number of entries on which the scores are based.



Metric	Whole archive (#Entries)	Similar resolution (#Entries, resolution range(Å))
Clashscore	79885	1594 (3.00-3.00)
Ramachandran outliers	78287	1537 (3.00-3.00)
Sidechain outliers	78261	1540 (3.00-3.00)

The table below summarises the geometric issues observed across the polymeric chains and their fit to the electron density. The red, orange, yellow and green segments on the lower bar indicate the fraction of residues that contain outliers for ≥ 3 , 2, 1 and 0 types of geometric quality criteria. The upper red bar (where present) indicates the fraction of residues that have poor fit to the electron density.

Note EDS was not executed.

Mol	Chain	Length	Quality of chain
1	A	347	
2	B	36	

2 Entry composition

There are 5 unique types of molecules in this entry. The entry contains 3119 atoms, of which 0 are hydrogen and 0 are deuterium.

In the tables below, the ZeroOcc column contains the number of atoms modelled with zero occupancy, the AltConf column contains the number of residues with at least one atom in alternate conformation and the Trace column contains the number of residues modelled with at most 2 atoms.

- Molecule 1 is a protein called ALPHA 1-ANTITRYPSIN.

Mol	Chain	Residues	Atoms					ZeroOcc	AltConf	Trace
1	A	339	Total	C	N	O	S	6	0	0
			2690	1726	441	515	8			

- Molecule 2 is a protein called ALPHA 1-ANTITRYPSIN.

Mol	Chain	Residues	Atoms					ZeroOcc	AltConf	Trace
2	B	36	Total	C	N	O	S	4	0	0
			291	193	46	50	2			

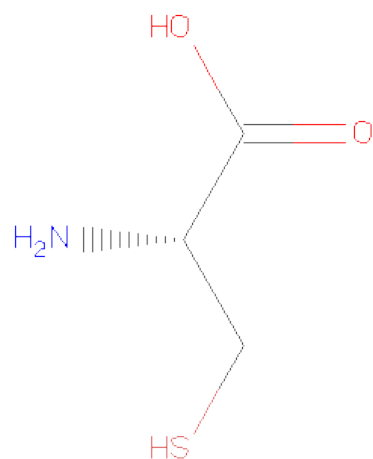
- Molecule 3 is a polymer of unknown type called SUGAR (6-MER).

Mol	Chain	Residues	Atoms				ZeroOcc	AltConf
3	A	6	Total	C	N	O	25	0
			75	42	3	30		

- Molecule 4 is a polymer of unknown type called SUGAR (2-MER).

Mol	Chain	Residues	Atoms				ZeroOcc	AltConf
4	A	2	Total	C	N	O	18	0
			28	16	2	10		
4	A	2	Total	C	N	O	5	0
			28	16	2	10		

- Molecule 5 is CYSTEINE (three-letter code: CYS) (formula: C₃H₇NO₂S).



Mol	Chain	Residues	Atoms					ZeroOcc	AltConf
			Total	C	N	O	S		
5	A	1	7	3	1	2	1	0	0

4 Data and refinement statistics

Xtriage (Phenix) and EDS were not executed - this section will therefore be incomplete.

Property	Value	Source
Space group	P 43 21 2	Depositor
Cell constants a, b, c, α , β , γ	119.30Å 119.30Å 104.30Å 90.00° 90.00° 90.00°	Depositor
Resolution (Å)	(Not available) – 3.00	Depositor
% Data completeness (in resolution range)	(Not available) ((Not available)-3.00)	Depositor
R_{merge}	(Not available)	Depositor
R_{sym}	(Not available)	Depositor
Refinement program	EREF	Depositor
R, R_{free}	0.209 , (Not available)	Depositor
Estimated twinning fraction	No twinning to report.	Xtriage
Total number of atoms	3119	wwPDB-VP
Average B, all atoms (Å ²)	20.0	wwPDB-VP

5 Model quality

5.1 Standard geometry

Bond lengths and bond angles in the following residue types are not validated in this section: NAG, MAN

The Z score for a bond length (or angle) is the number of standard deviations the observed value is removed from the expected value. A bond length (or angle) with $|Z| > 5$ is considered an outlier worth inspection. RMSZ is the root-mean-square of all Z scores of the bond lengths (or angles).

Mol	Chain	Bond lengths		Bond angles	
		RMSZ	$\# Z > 5$	RMSZ	$\# Z > 5$
1	A	0.77	2/2744 (0.1%)	1.07	0/3707
2	B	0.67	0/299	0.98	0/402
All	All	0.76	2/3043 (0.1%)	1.06	0/4109

Chiral center outliers are detected by calculating the chiral volume of a chiral center and verifying if the center is modelled as a planar moiety or with the opposite hand. A planarity outlier is detected by checking planarity of atoms in a peptide group, atoms in a mainchain group or atoms of a sidechain that are expected to be planar.

Mol	Chain	#Chirality outliers	#Planarity outliers
1	A	0	12
3	A	1	0
4	A	1	0
All	All	2	12

All (2) bond length outliers are listed below:

Mol	Chain	Res	Type	Atoms	Z	Observed(Å)	Ideal(Å)
1	A	194	TRP	NE1-CE2	-7.43	1.27	1.37
1	A	238	TRP	NE1-CE2	-6.73	1.28	1.37

There are no bond angle outliers.

All (2) chirality outliers are listed below:

Mol	Chain	Res	Type	Atom
3	A	503	MAN	C1
4	A	520	NAG	C1

All (12) planarity outliers are listed below:

Mol	Chain	Res	Type	Group
1	A	106	PRO	Mainchain
1	A	127	VAL	Mainchain
1	A	203	THR	Mainchain
1	A	237	SER	Mainchain
1	A	243	LYS	Mainchain
1	A	246	GLY	Mainchain
1	A	289	PRO	Mainchain
1	A	290	LYS	Mainchain
1	A	296	THR	Mainchain
1	A	309	THR	Mainchain
1	A	329	LEU	Mainchain
1	A	83	ASN	Mainchain

5.2 Close contacts ⓘ

In the following table, the Non-H and H(model) columns list the number of non-hydrogen atoms and hydrogen atoms in the chain respectively. The H(added) column lists the number of hydrogens added by MolProbity. The Clashes column lists the number of clashes within the asymmetric unit, and the number in parentheses is this value normalized per 1000 atoms of the molecule in the chain. The Symm-Clashes column gives symmetry related clashes, in the same way as for the Clashes column.

Mol	Chain	Non-H	H(model)	H(added)	Clashes	Symm-Clashes
1	A	2690	0	2685	50	338
2	B	291	0	306	6	27
3	A	75	0	64	0	135
4	A	56	0	50	1	0
5	A	7	0	3	0	3
All	All	3119	0	3108	52	350

Clashscore is defined as the number of clashes calculated for the entry per 1000 atoms (including hydrogens) of the entry. The overall clashscore for this entry is 9.

All (52) close contacts within the same asymmetric unit are listed below.

Atom-1	Atom-2	Distance(Å)	Clash(Å)
1:A:110:LEU:HD11	1:A:190:PHE:CE1	2.25	0.72
1:A:294:THR:HG22	1:A:337:VAL:HG22	1.72	0.71
1:A:331:LYS:HB2	1:A:354:GLU:HG2	1.76	0.68
1:A:226:MET:HG3	1:A:281:ARG:HB3	1.77	0.67
1:A:110:LEU:HD11	1:A:190:PHE:HE1	1.58	0.67
1:A:146:ASN:HD22	1:A:148:GLY:H	1.43	0.66
1:A:195:GLU:HG2	1:A:245:LEU:HD23	1.79	0.63

Continued on next page...

Continued from previous page...

Atom-1	Atom-2	Distance(Å)	Clash(Å)
1:A:246:GLY:HA2	4:A:520:NAG:H83	1.82	0.60
1:A:201:LYS:H	1:A:201:LYS:HD2	1.69	0.58
1:A:126:LEU:HD13	1:A:131:LEU:HD13	1.89	0.55
1:A:330:SER:OG	1:A:354:GLU:HG3	2.08	0.54
1:A:65:SER:HA	1:A:68:THR:OG1	2.08	0.53
1:A:125:LYS:HE3	1:A:324:GLU:HG3	1.91	0.53
1:A:27:THR:O	1:A:30:LEU:HB2	2.09	0.52
1:A:292:SER:HA	1:A:338:LEU:O	2.11	0.51
2:B:373:LEU:HB3	2:B:385:MET:HG3	1.92	0.51
1:A:228:ASN:HD21	1:A:279:GLU:HA	1.77	0.49
1:A:314:ASN:O	1:A:358:MET:HE1	2.13	0.49
1:A:146:ASN:C	1:A:146:ASN:HD22	2.15	0.48
1:A:93:HIS:HB3	1:A:137:LEU:HD23	1.96	0.48
1:A:285:SER:HB3	2:B:363:GLU:HA	1.95	0.47
2:B:373:LEU:HD12	2:B:375:ILE:HG13	1.96	0.47
1:A:72:THR:HG22	1:A:310:LYS:HD3	1.95	0.47
1:A:146:ASN:ND2	1:A:148:GLY:H	2.12	0.46
1:A:172:LEU:HD21	1:A:352:PHE:HB2	1.97	0.45
1:A:26:ILE:HA	1:A:29:ASN:HD22	1.82	0.45
1:A:35:PHE:O	1:A:39:ARG:HG3	2.17	0.45
1:A:288:LEU:HB2	1:A:289:PRO:HD2	1.98	0.45
1:A:254:LEU:HB2	2:B:366:PHE:CE2	2.52	0.45
1:A:63:MET:HG3	1:A:184:LEU:HD11	1.97	0.45
1:A:22:THR:HB	1:A:95:GLY:HA2	1.98	0.44
1:A:31:ALA:HA	2:B:382:PRO:HG3	1.99	0.44
1:A:223:ARG:HB3	1:A:227:PHE:HZ	1.82	0.44
1:A:121:SER:HB3	1:A:147:PHE:HD2	1.81	0.44
1:A:131:LEU:HD12	1:A:131:LEU:HA	1.86	0.44
1:A:329:LEU:HD21	1:A:353:LEU:HD22	2.00	0.43
1:A:181:VAL:HG23	1:A:357:PRO:HD3	2.01	0.43
1:A:27:THR:HA	1:A:30:LEU:HD12	2.01	0.43
1:A:22:THR:OG1	1:A:98:GLU:HG3	2.19	0.43
1:A:175:GLU:O	1:A:331:LYS:HE2	2.19	0.43
1:A:59:THR:HG22	1:A:96:PHE:CE1	2.53	0.42
1:A:195:GLU:HG2	1:A:245:LEU:CD2	2.48	0.41
1:A:291:LEU:HD21	2:B:391:PRO:HB3	2.01	0.41
1:A:337:VAL:O	1:A:347:ALA:HA	2.20	0.41
1:A:39:ARG:HH11	1:A:39:ARG:HD2	1.58	0.41
1:A:99:LEU:O	1:A:103:LEU:HG	2.20	0.41
1:A:352:PHE:CZ	1:A:354:GLU:HB3	2.55	0.41
1:A:27:THR:HB	1:A:28:PRO:CD	2.51	0.41
1:A:124:LEU:HD11	1:A:322:THR:HG21	2.02	0.41

Continued on next page...

Continued from previous page...

Atom-1	Atom-2	Distance(Å)	Clash(Å)
1:A:72:THR:O	1:A:76:ILE:HG13	2.21	0.41
1:A:299:LEU:HD23	1:A:299:LEU:HA	1.92	0.41
1:A:334:HIS:HB2	1:A:351:MET:SD	2.62	0.40

All (350) symmetry-related close contacts are listed below. The label for Atom-2 includes the symmetry operator and encoded unit-cell translations to be applied.

Atom-1	Atom-2	Distance(Å)	Clash(Å)
1:A:272:ILE:O	3:A:504:MAN:O4[8_666]	0.12	2.08
1:A:276:LEU:N	3:A:504:MAN:C6[8_666]	0.30	1.90
1:A:272:ILE:CD1	3:A:502:NAG:N2[8_666]	0.41	1.79
1:A:39:ARG:NE	1:A:47:SER:N[8_666]	0.45	1.75
1:A:259:LYS:CE	2:B:368:LYS:CE[8_666]	0.47	1.73
1:A:273:THR:CA	3:A:504:MAN:C3[8_666]	0.47	1.73
1:A:211:ASP:CA	1:A:266:GLU:CG[8_666]	0.50	1.70
1:A:39:ARG:NH2	1:A:47:SER:OG[8_666]	0.51	1.69
1:A:255:PRO:CA	1:A:258:GLY:CA[8_666]	0.52	1.68
1:A:267:LEU:CD2	3:A:501:NAG:C5[8_666]	0.57	1.63
1:A:301:SER:N	1:A:301:SER:CA[8_666]	0.60	1.60
1:A:275:PHE:CD1	3:A:503:MAN:O2[8_666]	0.61	1.59
1:A:260:LEU:CA	1:A:260:LEU:CB[8_666]	0.63	1.57
1:A:274:LYS:CA	3:A:503:MAN:C6[8_666]	0.64	1.56
1:A:274:LYS:CA	3:A:503:MAN:O6[8_666]	0.65	1.55
1:A:256:ASP:O	1:A:256:ASP:O[8_666]	0.66	1.54
1:A:210:VAL:C	1:A:266:GLU:OE2[8_666]	0.70	1.50
1:A:256:ASP:N	1:A:257:GLU:C[8_666]	0.70	1.50
1:A:273:THR:O	3:A:504:MAN:O5[8_666]	0.79	1.41
1:A:263:LEU:O	3:A:501:NAG:C8[8_666]	0.82	1.38
1:A:39:ARG:CG	1:A:45:SER:C[8_666]	0.83	1.37
1:A:37:LEU:O	1:A:44:GLN:CA[8_666]	0.84	1.36
1:A:212:GLN:OE1	1:A:232:CYS:SG[8_666]	0.88	1.32
1:A:272:ILE:N	3:A:502:NAG:O3[8_666]	0.88	1.32
1:A:256:ASP:CB	1:A:257:GLU:CA[8_666]	0.89	1.31
1:A:267:LEU:CD2	3:A:501:NAG:C4[8_666]	0.94	1.26
1:A:273:THR:CA	3:A:504:MAN:O3[8_666]	0.95	1.25
1:A:272:ILE:CG1	3:A:502:NAG:C7[8_666]	0.96	1.24
2:B:380:LYS:CE	3:A:505:NAG:C4[8_666]	0.96	1.24
1:A:39:ARG:CB	1:A:45:SER:O[8_666]	0.97	1.23
1:A:41:LEU:CD1	1:A:43:HIS:ND1[8_666]	0.98	1.22
1:A:260:LEU:C	1:A:260:LEU:CG[8_666]	0.98	1.22
1:A:42:ALA:N	1:A:43:HIS:N[8_666]	0.99	1.21
1:A:274:LYS:N	3:A:503:MAN:O6[8_666]	0.99	1.21

Continued on next page...

Continued from previous page...

Atom-1	Atom-2	Distance(Å)	Clash(Å)
1:A:149:ASP:CG	1:A:234:LYS:NZ[6_556]	1.00	1.20
1:A:275:PHE:CE2	3:A:502:NAG:O6[8_666]	1.00	1.20
1:A:272:ILE:CA	3:A:502:NAG:O3[8_666]	1.01	1.19
1:A:256:ASP:N	1:A:258:GLY:N[8_666]	1.02	1.18
2:B:380:LYS:CD	3:A:505:NAG:O4[8_666]	1.02	1.18
1:A:39:ARG:O	1:A:41:LEU:O[8_666]	1.03	1.17
1:A:276:LEU:N	3:A:504:MAN:O6[8_666]	1.03	1.17
1:A:40:GLN:CB	1:A:44:GLN:CD[8_666]	1.04	1.16
1:A:256:ASP:CA	1:A:257:GLU:O[8_666]	1.04	1.16
1:A:260:LEU:CG	1:A:261:GLN:N[8_666]	1.05	1.15
1:A:263:LEU:C	3:A:501:NAG:C8[8_666]	1.05	1.15
1:A:255:PRO:C	1:A:258:GLY:CA[8_666]	1.06	1.14
1:A:260:LEU:C	1:A:260:LEU:CB[8_666]	1.06	1.14
1:A:211:ASP:N	1:A:266:GLU:CD[8_666]	1.07	1.13
2:B:380:LYS:CD	3:A:505:NAG:C4[8_666]	1.07	1.13
1:A:266:GLU:N	3:A:501:NAG:O7[8_666]	1.08	1.12
1:A:256:ASP:N	1:A:257:GLU:O[8_666]	1.11	1.09
1:A:38:TYR:OH	1:A:261:GLN:NE2[8_666]	1.12	1.08
1:A:275:PHE:CZ	3:A:502:NAG:O6[8_666]	1.13	1.07
2:B:380:LYS:CE	3:A:505:NAG:O4[8_666]	1.14	1.06
1:A:273:THR:C	3:A:504:MAN:C3[8_666]	1.16	1.04
1:A:301:SER:N	1:A:301:SER:N[8_666]	1.16	1.04
1:A:212:GLN:OE1	1:A:232:CYS:CB[8_666]	1.17	1.03
1:A:38:TYR:O	1:A:44:GLN:N[8_666]	1.18	1.02
1:A:267:LEU:CG	3:A:501:NAG:C1[8_666]	1.18	1.02
1:A:275:PHE:C	3:A:504:MAN:O6[8_666]	1.18	1.02
1:A:38:TYR:O	1:A:43:HIS:C[8_666]	1.19	1.01
1:A:230:GLN:CG	3:A:506:MAN:O4[8_666]	1.19	1.01
1:A:265:ASN:CG	2:B:389:VAL:CG2[8_666]	1.20	1.00
1:A:212:GLN:CD	1:A:232:CYS:SG[8_666]	1.22	0.98
1:A:40:GLN:CB	1:A:44:GLN:CB[8_666]	1.23	0.97
1:A:40:GLN:O	1:A:41:LEU:CA[8_666]	1.24	0.96
1:A:255:PRO:CG	1:A:258:GLY:O[8_666]	1.24	0.96
1:A:260:LEU:CD2	1:A:261:GLN:CA[8_666]	1.24	0.96
1:A:273:THR:C	3:A:504:MAN:C2[8_666]	1.25	0.95
1:A:256:ASP:CA	1:A:257:GLU:C[8_666]	1.26	0.94
1:A:272:ILE:C	3:A:504:MAN:O4[8_666]	1.27	0.93
1:A:273:THR:N	3:A:504:MAN:O3[8_666]	1.27	0.93
1:A:41:LEU:CB	1:A:43:HIS:CB[8_666]	1.29	0.91
1:A:43:HIS:CD2	1:A:50:ILE:CG2[8_666]	1.30	0.90
1:A:39:ARG:CG	1:A:46:ASN:N[8_666]	1.31	0.89
1:A:275:PHE:CE2	3:A:502:NAG:C6[8_666]	1.31	0.89

Continued on next page...

Continued from previous page...

Atom-1	Atom-2	Distance(Å)	Clash(Å)
1:A:274:LYS:CB	3:A:503:MAN:C5[8_666]	1.32	0.88
1:A:256:ASP:C	1:A:256:ASP:C[8_666]	1.33	0.87
1:A:256:ASP:CG	1:A:257:GLU:CB[8_666]	1.33	0.87
1:A:267:LEU:CG	3:A:501:NAG:O5[8_666]	1.33	0.87
1:A:267:LEU:CD1	3:A:501:NAG:O5[8_666]	1.33	0.87
1:A:255:PRO:CD	1:A:258:GLY:O[8_666]	1.34	0.86
1:A:260:LEU:CD1	1:A:261:GLN:N[8_666]	1.34	0.86
1:A:265:ASN:ND2	2:B:389:VAL:CG2[8_666]	1.35	0.85
1:A:39:ARG:CB	1:A:45:SER:C[8_666]	1.36	0.84
1:A:212:GLN:O	1:A:234:LYS:CG[8_666]	1.36	0.84
1:A:230:GLN:NE2	3:A:506:MAN:C4[8_666]	1.36	0.84
1:A:272:ILE:CD1	3:A:502:NAG:C2[8_666]	1.36	0.84
1:A:261:GLN:OE1	2:B:371:VAL:CG2[8_666]	1.37	0.83
1:A:275:PHE:CE2	3:A:502:NAG:C5[8_666]	1.37	0.83
1:A:230:GLN:CD	3:A:506:MAN:O4[8_666]	1.38	0.82
1:A:256:ASP:C	1:A:256:ASP:O[8_666]	1.39	0.81
1:A:210:VAL:C	1:A:266:GLU:CD[8_666]	1.40	0.80
1:A:210:VAL:O	1:A:266:GLU:OE2[8_666]	1.40	0.80
1:A:230:GLN:NE2	3:A:506:MAN:C3[8_666]	1.41	0.79
1:A:267:LEU:CB	3:A:501:NAG:C1[8_666]	1.41	0.79
1:A:276:LEU:CA	3:A:504:MAN:C6[8_666]	1.41	0.79
1:A:39:ARG:N	1:A:45:SER:N[8_666]	1.43	0.77
1:A:39:ARG:CD	1:A:47:SER:N[8_666]	1.43	0.77
1:A:40:GLN:N	1:A:44:GLN:CB[8_666]	1.43	0.77
1:A:211:ASP:OD1	1:A:266:GLU:O[8_666]	1.43	0.77
1:A:256:ASP:OD1	1:A:257:GLU:CB[8_666]	1.43	0.77
1:A:267:LEU:CG	3:A:501:NAG:C2[8_666]	1.43	0.77
1:A:41:LEU:CD1	1:A:43:HIS:CE1[8_666]	1.44	0.76
1:A:259:LYS:CD	2:B:368:LYS:CE[8_666]	1.44	0.76
1:A:273:THR:N	3:A:504:MAN:C3[8_666]	1.44	0.76
1:A:40:GLN:OE1	1:A:44:GLN:NE2[8_666]	1.45	0.75
1:A:42:ALA:CB	1:A:42:ALA:CB[8_666]	1.45	0.75
1:A:272:ILE:CG1	3:A:502:NAG:N2[8_666]	1.45	0.75
1:A:274:LYS:CB	3:A:503:MAN:C6[8_666]	1.45	0.75
1:A:39:ARG:CZ	1:A:47:SER:OG[8_666]	1.46	0.74
1:A:40:GLN:CG	1:A:44:GLN:NE2[8_666]	1.46	0.74
1:A:46:ASN:O	1:A:264:GLU:O[8_666]	1.46	0.74
1:A:273:THR:C	3:A:504:MAN:C1[8_666]	1.46	0.74
1:A:273:THR:CG2	3:A:505:NAG:C1[8_666]	1.46	0.74
1:A:301:SER:CB	1:A:302:VAL:N[8_666]	1.46	0.74
1:A:275:PHE:CG	3:A:503:MAN:O2[8_666]	1.47	0.73
2:B:380:LYS:CD	3:A:505:NAG:C5[8_666]	1.47	0.73

Continued on next page...

Continued from previous page...

Atom-1	Atom-2	Distance(Å)	Clash(Å)
1:A:255:PRO:CB	1:A:258:GLY:CA[8_666]	1.49	0.71
1:A:272:ILE:CD1	3:A:502:NAG:C7[8_666]	1.49	0.71
1:A:275:PHE:C	3:A:504:MAN:C6[8_666]	1.49	0.71
1:A:300:LYS:O	1:A:301:SER:OG[8_666]	1.49	0.71
1:A:149:ASP:CB	1:A:234:LYS:NZ[6_556]	1.50	0.70
1:A:255:PRO:CG	1:A:258:GLY:C[8_666]	1.50	0.70
1:A:40:GLN:CB	1:A:44:GLN:CG[8_666]	1.51	0.69
1:A:230:GLN:CB	3:A:506:MAN:O4[8_666]	1.51	0.69
1:A:259:LYS:CE	2:B:368:LYS:NZ[8_666]	1.54	0.66
1:A:260:LEU:O	1:A:260:LEU:CD2[8_666]	1.54	0.66
1:A:271:ILE:O	3:A:503:MAN:C1[8_666]	1.54	0.66
1:A:272:ILE:CG1	3:A:502:NAG:C8[8_666]	1.54	0.66
1:A:39:ARG:CG	1:A:45:SER:O[8_666]	1.55	0.65
1:A:255:PRO:C	1:A:258:GLY:C[8_666]	1.55	0.65
1:A:259:LYS:NZ	2:B:368:LYS:CD[8_666]	1.55	0.65
1:A:273:THR:CB	3:A:504:MAN:C2[8_666]	1.55	0.65
1:A:300:LYS:C	1:A:301:SER:CA[8_666]	1.55	0.65
2:B:380:LYS:NZ	3:A:505:NAG:C4[8_666]	1.55	0.65
1:A:255:PRO:O	1:A:258:GLY:C[8_666]	1.56	0.64
1:A:212:GLN:NE2	1:A:232:CYS:SG[8_666]	1.57	0.63
1:A:260:LEU:CA	1:A:260:LEU:CA[8_666]	1.57	0.63
1:A:267:LEU:CG	3:A:501:NAG:C5[8_666]	1.57	0.63
1:A:328:LYS:NZ	1:A:328:LYS:NZ[8_666]	1.57	0.63
1:A:37:LEU:CA	1:A:44:GLN:O[8_666]	1.58	0.62
1:A:39:ARG:NH2	1:A:47:SER:CB[8_666]	1.58	0.62
1:A:273:THR:O	3:A:504:MAN:C1[8_666]	1.58	0.62
1:A:39:ARG:N	1:A:44:GLN:C[8_666]	1.59	0.61
1:A:260:LEU:N	1:A:260:LEU:CB[8_666]	1.59	0.61
1:A:262:HIS:ND1	2:B:369:PRO:CD[8_666]	1.59	0.61
1:A:42:ALA:C	1:A:42:ALA:CB[8_666]	1.61	0.59
2:B:380:LYS:NZ	3:A:505:NAG:C3[8_666]	1.61	0.59
1:A:256:ASP:CB	1:A:257:GLU:N[8_666]	1.62	0.58
1:A:265:ASN:OD1	2:B:389:VAL:CG2[8_666]	1.62	0.58
1:A:273:THR:C	3:A:504:MAN:O5[8_666]	1.62	0.58
1:A:256:ASP:N	1:A:258:GLY:CA[8_666]	1.63	0.57
1:A:259:LYS:CE	2:B:368:LYS:CD[8_666]	1.63	0.57
1:A:267:LEU:CB	3:A:501:NAG:C2[8_666]	1.63	0.57
1:A:275:PHE:CZ	3:A:502:NAG:C6[8_666]	1.63	0.57
1:A:37:LEU:C	1:A:44:GLN:C[8_666]	1.64	0.56
1:A:41:LEU:CG	1:A:43:HIS:ND1[8_666]	1.64	0.56
1:A:255:PRO:O	1:A:259:LYS:N[8_666]	1.64	0.56
1:A:259:LYS:NZ	2:B:368:LYS:CE[8_666]	1.64	0.56

Continued on next page...

Continued from previous page...

Atom-1	Atom-2	Distance(Å)	Clash(Å)
1:A:46:ASN:O	1:A:265:ASN:N[8_666]	1.65	0.55
1:A:275:PHE:CE1	3:A:503:MAN:O2[8_666]	1.65	0.55
1:A:40:GLN:CA	1:A:41:LEU:O[8_666]	1.66	0.54
1:A:40:GLN:CD	1:A:44:GLN:NE2[8_666]	1.66	0.54
1:A:46:ASN:O	1:A:264:GLU:C[8_666]	1.66	0.54
1:A:211:ASP:N	1:A:266:GLU:CG[8_666]	1.66	0.54
1:A:256:ASP:CB	1:A:257:GLU:CB[8_666]	1.66	0.54
1:A:39:ARG:C	1:A:41:LEU:O[8_666]	1.67	0.53
1:A:259:LYS:CD	2:B:368:LYS:NZ[8_666]	1.68	0.52
1:A:267:LEU:N	3:A:501:NAG:N2[8_666]	1.68	0.52
1:A:40:GLN:CB	1:A:44:GLN:NE2[8_666]	1.69	0.51
1:A:260:LEU:CD2	1:A:261:GLN:N[8_666]	1.69	0.51
1:A:37:LEU:C	1:A:44:GLN:O[8_666]	1.70	0.50
1:A:211:ASP:CA	1:A:266:GLU:CD[8_666]	1.70	0.50
1:A:255:PRO:C	1:A:257:GLU:O[8_666]	1.70	0.50
1:A:358:MET:O	1:A:358:MET:O[8_666]	1.70	0.50
1:A:38:TYR:N	1:A:44:GLN:O[8_666]	1.71	0.49
1:A:211:ASP:CG	1:A:266:GLU:O[8_666]	1.71	0.49
1:A:267:LEU:CG	3:A:501:NAG:C4[8_666]	1.71	0.49
1:A:39:ARG:NH1	1:A:47:SER:OG[8_666]	1.72	0.48
1:A:40:GLN:CA	1:A:44:GLN:CB[8_666]	1.72	0.48
1:A:259:LYS:CG	2:B:368:LYS:NZ[8_666]	1.72	0.48
1:A:300:LYS:C	1:A:301:SER:N[8_666]	1.72	0.48
1:A:301:SER:CA	1:A:301:SER:CA[8_666]	1.72	0.48
1:A:38:TYR:CA	1:A:43:HIS:O[8_666]	1.73	0.47
1:A:274:LYS:N	3:A:504:MAN:C1[8_666]	1.73	0.47
1:A:46:ASN:C	1:A:264:GLU:O[8_666]	1.74	0.46
1:A:149:ASP:OD2	1:A:234:LYS:NZ[6_556]	1.74	0.46
1:A:256:ASP:CB	1:A:257:GLU:C[8_666]	1.74	0.46
1:A:273:THR:O	3:A:504:MAN:C2[8_666]	1.74	0.46
1:A:273:THR:O	3:A:504:MAN:O2[8_666]	1.74	0.46
1:A:298:ASP:OD2	1:A:304:GLY:CA[8_666]	1.74	0.46
1:A:38:TYR:C	1:A:44:GLN:N[8_666]	1.75	0.45
1:A:39:ARG:CG	1:A:46:ASN:CA[8_666]	1.75	0.45
1:A:212:GLN:CA	1:A:234:LYS:CB[8_666]	1.75	0.45
1:A:271:ILE:C	3:A:502:NAG:O3[8_666]	1.75	0.45
1:A:299:LEU:O	1:A:301:SER:CB[8_666]	1.75	0.45
1:A:39:ARG:CZ	1:A:47:SER:CA[8_666]	1.76	0.44
1:A:41:LEU:CD1	1:A:43:HIS:CG[8_666]	1.76	0.44
1:A:211:ASP:C	1:A:266:GLU:CG[8_666]	1.76	0.44
1:A:236:SER:O	1:A:257:GLU:CG[8_666]	1.77	0.43
1:A:265:ASN:CB	2:B:389:VAL:CG1[8_666]	1.77	0.43

Continued on next page...

Continued from previous page...

Atom-1	Atom-2	Distance(Å)	Clash(Å)
1:A:259:LYS:CD	2:B:368:LYS:CD[8_666]	1.78	0.42
1:A:271:ILE:O	3:A:503:MAN:O5[8_666]	1.78	0.42
1:A:274:LYS:N	3:A:504:MAN:C3[8_666]	1.78	0.42
1:A:260:LEU:C	1:A:260:LEU:CD2[8_666]	1.79	0.41
1:A:212:GLN:C	1:A:234:LYS:CB[8_666]	1.80	0.40
1:A:256:ASP:OD1	1:A:257:GLU:CG[8_666]	1.80	0.40
1:A:267:LEU:CB	3:A:501:NAG:C3[8_666]	1.80	0.40
1:A:273:THR:CG2	3:A:504:MAN:O2[8_666]	1.80	0.40
1:A:39:ARG:CA	1:A:45:SER:N[8_666]	1.81	0.39
1:A:39:ARG:CA	1:A:45:SER:O[8_666]	1.81	0.39
1:A:259:LYS:NZ	2:B:368:LYS:CG[8_666]	1.81	0.39
1:A:274:LYS:CA	3:A:504:MAN:C1[8_666]	1.81	0.39
1:A:39:ARG:CG	1:A:45:SER:CA[8_666]	1.82	0.38
1:A:274:LYS:CB	3:A:503:MAN:O6[8_666]	1.82	0.38
1:A:298:ASP:O	1:A:305:GLN:NE2[8_666]	1.82	0.38
3:A:503:MAN:C3	5:A:395:CYS:N[8_666]	1.82	0.38
1:A:40:GLN:O	1:A:40:GLN:O[8_666]	1.83	0.37
1:A:42:ALA:CA	1:A:42:ALA:CB[8_666]	1.83	0.37
1:A:265:ASN:C	3:A:501:NAG:O7[8_666]	1.83	0.37
1:A:37:LEU:C	1:A:44:GLN:CA[8_666]	1.84	0.36
1:A:297:TYR:CB	1:A:305:GLN:OE1[8_666]	1.84	0.36
1:A:39:ARG:NE	1:A:46:ASN:C[8_666]	1.85	0.35
1:A:211:ASP:OD1	1:A:266:GLU:C[8_666]	1.85	0.35
1:A:274:LYS:CA	3:A:503:MAN:C5[8_666]	1.85	0.35
1:A:276:LEU:CA	3:A:504:MAN:O6[8_666]	1.85	0.35
1:A:273:THR:C	3:A:503:MAN:O6[8_666]	1.86	0.34
1:A:275:PHE:N	3:A:503:MAN:O5[8_666]	1.86	0.34
1:A:273:THR:CA	3:A:504:MAN:C2[8_666]	1.87	0.33
1:A:274:LYS:N	3:A:503:MAN:C6[8_666]	1.87	0.33
1:A:38:TYR:C	1:A:44:GLN:CA[8_666]	1.88	0.32
1:A:38:TYR:O	1:A:42:ALA:O[8_666]	1.88	0.32
1:A:39:ARG:CZ	1:A:47:SER:CB[8_666]	1.88	0.32
1:A:209:HIS:O	1:A:262:HIS:CE1[8_666]	1.88	0.32
1:A:210:VAL:CA	1:A:266:GLU:OE2[8_666]	1.88	0.32
1:A:211:ASP:CB	1:A:266:GLU:CG[8_666]	1.88	0.32
1:A:212:GLN:O	1:A:234:LYS:CD[8_666]	1.88	0.32
1:A:272:ILE:O	3:A:504:MAN:C4[8_666]	1.88	0.32
1:A:274:LYS:C	3:A:503:MAN:C6[8_666]	1.88	0.32
1:A:39:ARG:CB	1:A:45:SER:CA[8_666]	1.89	0.31
1:A:231:HIS:NE2	1:A:257:GLU:OE1[8_666]	1.89	0.31
1:A:39:ARG:NH1	1:A:47:SER:CB[8_666]	1.90	0.30
1:A:255:PRO:CB	1:A:258:GLY:C[8_666]	1.90	0.30

Continued on next page...

Continued from previous page...

Atom-1	Atom-2	Distance(Å)	Clash(Å)
1:A:261:GLN:CD	2:B:371:VAL:CG2[8_666]	1.90	0.30
1:A:301:SER:N	1:A:301:SER:C[8_666]	1.90	0.30
1:A:210:VAL:CG1	1:A:266:GLU:OE1[8_666]	1.91	0.29
1:A:212:GLN:O	1:A:234:LYS:CB[8_666]	1.91	0.29
1:A:231:HIS:CE1	1:A:257:GLU:OE1[8_666]	1.92	0.28
1:A:260:LEU:CA	1:A:260:LEU:CG[8_666]	1.92	0.28
1:A:267:LEU:CD2	3:A:501:NAG:O5[8_666]	1.92	0.28
1:A:273:THR:OG1	3:A:504:MAN:O3[8_666]	1.92	0.28
1:A:39:ARG:CZ	1:A:47:SER:N[8_666]	1.93	0.27
1:A:149:ASP:OD1	5:A:395:CYS:OXT[6_556]	1.93	0.27
1:A:267:LEU:CG	3:A:501:NAG:C3[8_666]	1.93	0.27
1:A:274:LYS:N	3:A:504:MAN:C2[8_666]	1.93	0.27
1:A:275:PHE:N	3:A:504:MAN:C5[8_666]	1.93	0.27
1:A:275:PHE:O	3:A:504:MAN:O6[8_666]	1.93	0.27
1:A:255:PRO:N	1:A:258:GLY:CA[8_666]	1.94	0.26
1:A:211:ASP:N	1:A:266:GLU:OE2[8_666]	1.95	0.25
1:A:255:PRO:CA	1:A:258:GLY:N[8_666]	1.95	0.25
1:A:276:LEU:CB	3:A:504:MAN:C6[8_666]	1.96	0.24
1:A:38:TYR:N	1:A:44:GLN:C[8_666]	1.97	0.23
1:A:152:GLU:OE1	1:A:213:VAL:O[3_644]	1.97	0.23
1:A:211:ASP:N	1:A:266:GLU:OE1[8_666]	1.97	0.23
1:A:230:GLN:NE2	3:A:506:MAN:C5[8_666]	1.97	0.23
1:A:272:ILE:CA	3:A:502:NAG:C3[8_666]	1.97	0.23
1:A:37:LEU:O	1:A:44:GLN:CB[8_666]	1.98	0.22
1:A:264:GLU:N	3:A:501:NAG:C8[8_666]	1.98	0.22
1:A:265:ASN:CA	3:A:501:NAG:O7[8_666]	1.98	0.22
1:A:271:ILE:O	3:A:502:NAG:O3[8_666]	1.98	0.22
1:A:41:LEU:CB	1:A:43:HIS:CG[8_666]	1.99	0.21
1:A:212:GLN:CD	1:A:232:CYS:CB[8_666]	1.99	0.21
1:A:255:PRO:CA	1:A:258:GLY:C[8_666]	1.99	0.21
1:A:298:ASP:N	1:A:305:GLN:OE1[8_666]	1.99	0.21
1:A:230:GLN:NE2	3:A:506:MAN:O3[8_666]	2.00	0.20
1:A:260:LEU:O	1:A:260:LEU:CG[8_666]	2.00	0.20
1:A:42:ALA:N	1:A:42:ALA:C[8_666]	2.01	0.19
1:A:274:LYS:O	3:A:504:MAN:O5[8_666]	2.01	0.19
1:A:275:PHE:CE1	3:A:506:MAN:C5[8_666]	2.01	0.19
1:A:40:GLN:CB	1:A:44:GLN:OE1[8_666]	2.02	0.18
1:A:260:LEU:O	1:A:260:LEU:CB[8_666]	2.02	0.18
1:A:264:GLU:C	3:A:501:NAG:C8[8_666]	2.02	0.18
1:A:275:PHE:CD2	3:A:502:NAG:O4[8_666]	2.02	0.18
1:A:39:ARG:NE	1:A:47:SER:CA[8_666]	2.03	0.17
1:A:255:PRO:C	1:A:258:GLY:N[8_666]	2.03	0.17

Continued on next page...

Continued from previous page...

Atom-1	Atom-2	Distance(Å)	Clash(Å)
1:A:38:TYR:O	1:A:43:HIS:O[8_666]	2.04	0.16
1:A:44:GLN:OE1	1:A:302:VAL:CG1[8_666]	2.04	0.16
1:A:46:ASN:CG	1:A:264:GLU:O[8_666]	2.04	0.16
1:A:35:PHE:O	1:A:45:SER:CA[8_666]	2.05	0.15
1:A:274:LYS:C	3:A:504:MAN:O5[8_666]	2.05	0.15
1:A:276:LEU:N	3:A:504:MAN:C5[8_666]	2.05	0.15
1:A:37:LEU:N	1:A:44:GLN:O[8_666]	2.06	0.14
1:A:39:ARG:CD	1:A:46:ASN:C[8_666]	2.06	0.14
1:A:272:ILE:C	3:A:504:MAN:C4[8_666]	2.06	0.14
1:A:41:LEU:N	1:A:44:GLN:N[8_666]	2.07	0.13
1:A:275:PHE:CD2	3:A:502:NAG:O6[8_666]	2.07	0.13
1:A:275:PHE:CE1	3:A:506:MAN:O5[8_666]	2.07	0.13
1:A:40:GLN:CG	1:A:44:GLN:CG[8_666]	2.08	0.12
1:A:273:THR:O	3:A:504:MAN:C3[8_666]	2.08	0.12
1:A:46:ASN:ND2	1:A:267:LEU:CD1[8_666]	2.09	0.11
1:A:272:ILE:C	3:A:502:NAG:O3[8_666]	2.09	0.11
1:A:273:THR:CB	3:A:504:MAN:O3[8_666]	2.09	0.11
1:A:212:GLN:OE1	1:A:232:CYS:CA[8_666]	2.10	0.10
1:A:255:PRO:O	1:A:258:GLY:O[8_666]	2.10	0.10
1:A:273:THR:C	3:A:504:MAN:O2[8_666]	2.10	0.10
1:A:273:THR:CG2	3:A:505:NAG:C2[8_666]	2.10	0.10
3:A:506:MAN:C1	5:A:395:CYS:CB[8_666]	2.10	0.10
1:A:39:ARG:CB	1:A:45:SER:N[8_666]	2.11	0.09
1:A:149:ASP:CB	1:A:234:LYS:CE[6_556]	2.11	0.09
1:A:275:PHE:CE1	3:A:503:MAN:C2[8_666]	2.11	0.09
1:A:38:TYR:O	1:A:42:ALA:C[8_666]	2.12	0.08
1:A:40:GLN:N	1:A:44:GLN:CA[8_666]	2.12	0.08
1:A:263:LEU:O	3:A:501:NAG:C7[8_666]	2.12	0.08
1:A:272:ILE:CG1	3:A:502:NAG:O7[8_666]	2.12	0.08
1:A:272:ILE:CD1	3:A:502:NAG:C1[8_666]	2.12	0.08
1:A:274:LYS:C	3:A:503:MAN:C5[8_666]	2.12	0.08
1:A:275:PHE:CG	3:A:502:NAG:O4[8_666]	2.12	0.08
1:A:38:TYR:OH	1:A:261:GLN:CD[8_666]	2.13	0.07
1:A:41:LEU:C	1:A:43:HIS:N[8_666]	2.13	0.07
1:A:41:LEU:CB	1:A:43:HIS:CA[8_666]	2.13	0.07
1:A:211:ASP:CB	1:A:266:GLU:OE1[8_666]	2.13	0.07
1:A:267:LEU:CD2	3:A:501:NAG:C6[8_666]	2.13	0.07
1:A:273:THR:CA	3:A:504:MAN:C4[8_666]	2.13	0.07
1:A:235:LEU:CD2	3:A:501:NAG:O3[8_666]	2.14	0.06
1:A:267:LEU:CA	3:A:501:NAG:C3[8_666]	2.14	0.06
1:A:273:THR:CG2	3:A:504:MAN:C2[8_666]	2.14	0.06
1:A:275:PHE:CD1	3:A:503:MAN:C2[8_666]	2.14	0.06

Continued on next page...

Continued from previous page...

Atom-1	Atom-2	Distance(Å)	Clash(Å)
1:A:36:SER:O	1:A:45:SER:CB[8_666]	2.15	0.05
1:A:39:ARG:NH2	1:A:47:SER:CA[8_666]	2.15	0.05
1:A:40:GLN:CG	1:A:44:GLN:CD[8_666]	2.15	0.05
1:A:255:PRO:N	1:A:258:GLY:O[8_666]	2.15	0.05
1:A:273:THR:N	3:A:504:MAN:C4[8_666]	2.15	0.05
1:A:275:PHE:CD2	3:A:502:NAG:C5[8_666]	2.15	0.05
1:A:276:LEU:CD2	3:A:505:NAG:C6[8_666]	2.15	0.05
1:A:35:PHE:O	1:A:46:ASN:N[8_666]	2.16	0.04
1:A:236:SER:C	1:A:257:GLU:CG[8_666]	2.16	0.04
1:A:264:GLU:CA	3:A:501:NAG:C8[8_666]	2.16	0.04
2:B:380:LYS:CG	3:A:505:NAG:C6[8_666]	2.16	0.04
1:A:37:LEU:O	1:A:44:GLN:N[8_666]	2.17	0.03
1:A:43:HIS:NE2	1:A:50:ILE:CG2[8_666]	2.17	0.03
1:A:256:ASP:CA	1:A:258:GLY:N[8_666]	2.17	0.03
2:B:380:LYS:CG	3:A:505:NAG:O4[8_666]	2.17	0.03
2:B:380:LYS:NZ	3:A:505:NAG:C2[8_666]	2.17	0.03
1:A:38:TYR:C	1:A:43:HIS:O[8_666]	2.18	0.02
1:A:41:LEU:CB	1:A:43:HIS:ND1[8_666]	2.18	0.02
1:A:42:ALA:N	1:A:42:ALA:N[8_666]	2.18	0.02
1:A:230:GLN:CD	3:A:506:MAN:C4[8_666]	2.18	0.02
1:A:210:VAL:CB	1:A:266:GLU:OE1[8_666]	2.19	0.01
1:A:255:PRO:C	1:A:257:GLU:C[8_666]	2.19	0.01

5.3 Torsion angles

5.3.1 Protein backbone ⓘ

In the following table, the Percentiles column shows the percent Ramachandran outliers of the chain as a percentile score with respect to all X-ray entries followed by that with respect to entries of similar resolution. The Analysed column shows the number of residues for which the backbone conformation was analysed, and the total number of residues.

Mol	Chain	Analysed	Favoured	Allowed	Outliers	Percentiles	
1	A	337/347 (97%)	323 (96%)	14 (4%)	0	100	100
2	B	34/36 (94%)	32 (94%)	2 (6%)	0	100	100
All	All	371/383 (97%)	355 (96%)	16 (4%)	0	100	100

There are no Ramachandran outliers to report.

5.3.2 Protein sidechains ⓘ

In the following table, the Percentiles column shows the percent sidechain outliers of the chain as a percentile score with respect to all X-ray entries followed by that with respect to entries of similar resolution. The Analysed column shows the number of residues for which the sidechain conformation was analysed, and the total number of residues.

Mol	Chain	Analysed	Rotameric	Outliers	Percentiles	
1	A	297/305 (97%)	277 (93%)	20 (7%)	23	64
2	B	35/35 (100%)	34 (97%)	1 (3%)	55	90
All	All	332/340 (98%)	311 (94%)	21 (6%)	24	66

All (21) residues with a non-rotameric sidechain are listed below:

Mol	Chain	Res	Type
1	A	22	THR
1	A	23	PHE
1	A	24	ASN
1	A	68	THR
1	A	109	GLN
1	A	125	LYS
1	A	146	ASN
1	A	151	GLU
1	A	169	ILE
1	A	186	ASN
1	A	200	VAL
1	A	201	LYS
1	A	202	ASP
1	A	273	THR
1	A	276	LEU
1	A	282	ARG
1	A	288	LEU
1	A	305	GLN
1	A	311	VAL
1	A	342	GLU
2	B	374	MET

Some sidechains can be flipped to improve hydrogen bonding and reduce clashes. All (8) such sidechains are listed below:

Mol	Chain	Res	Type
1	A	29	ASN
1	A	97	GLN
1	A	146	ASN

Continued on next page...

Continued from previous page...

Mol	Chain	Res	Type
1	A	186	ASN
1	A	212	GLN
1	A	228	ASN
1	A	278	ASN
2	B	377	GLN

5.3.3 RNA ⓘ

There are no RNA chains in this entry.

5.4 Non-standard residues in protein, DNA, RNA chains ⓘ

There are no non-standard protein/DNA/RNA residues in this entry.

5.5 Carbohydrates ⓘ

10 carbohydrates are modelled in this entry.

In the following table, the Counts columns list the number of bonds (or angles) for which Mogul statistics could be retrieved, the number of bonds (or angles) that are observed in the model and the number of bonds (or angles) that are defined in the chemical component dictionary. The Link column lists molecule types, if any, to which the group is linked. The Z score for a bond length (or angle) is the number of standard deviations the observed value is removed from the expected value. A bond length (or angle) with $|Z| > 2$ is considered an outlier worth inspection. RMSZ is the root-mean-square of all Z scores of the bond lengths (or angles).

Mol	Type	Chain	Res	Link	Bond lengths			Bond angles		
					Counts	RMSZ	$\# Z > 2$	Counts	RMSZ	$\# Z > 2$
3	NAG	A	501	1,3	12,14,15	0.89	0	15,19,21	1.30	3 (20%)
3	NAG	A	502	3	12,14,15	0.81	0	15,19,21	1.11	0
3	MAN	A	503	3	10,11,12	0.58	0	11,15,17	1.38	1 (9%)
3	MAN	A	504	3	10,11,12	0.64	0	11,15,17	1.00	1 (9%)
3	NAG	A	505	3	12,14,15	0.69	0	15,19,21	0.99	1 (6%)
3	MAN	A	506	3	10,11,12	0.58	0	11,15,17	1.20	1 (9%)
4	NAG	A	510	1,4	12,14,15	0.74	0	15,19,21	1.10	0
4	NAG	A	511	4	12,14,15	0.66	0	15,19,21	0.88	0
4	NAG	A	520	1,4	12,14,15	0.86	1 (8%)	15,19,21	1.73	4 (26%)
4	NAG	A	521	4	12,14,15	0.74	0	15,19,21	1.38	2 (13%)

In the following table, the Chirals column lists the number of chiral outliers, the number of chiral

centers analysed, the number of these observed in the model and the number defined in the chemical component dictionary. Similar counts are reported in the Torsion and Rings columns. '-' means no outliers of that kind were identified.

Mol	Type	Chain	Res	Link	Chirals	Torsions	Rings
3	NAG	A	501	1,3	-	0/6/23/26	0/1/1/1
3	NAG	A	502	3	-	0/6/23/26	0/1/1/1
3	MAN	A	503	3	1/1/4/5	0/2/19/22	0/1/1/1
3	MAN	A	504	3	-	0/2/19/22	0/1/1/1
3	NAG	A	505	3	-	0/6/23/26	0/1/1/1
3	MAN	A	506	3	-	0/2/19/22	0/1/1/1
4	NAG	A	510	1,4	-	0/6/23/26	0/1/1/1
4	NAG	A	511	4	-	0/6/23/26	0/1/1/1
4	NAG	A	520	1,4	1/1/5/7	0/6/23/26	0/1/1/1
4	NAG	A	521	4	-	0/6/23/26	0/1/1/1

All (1) bond length outliers are listed below:

Mol	Chain	Res	Type	Atoms	Z	Observed(Å)	Ideal(Å)
4	A	520	NAG	C2-N2	2.19	1.48	1.46

All (13) bond angle outliers are listed below:

Mol	Chain	Res	Type	Atoms	Z	Observed(°)	Ideal(°)
4	A	520	NAG	O5-C5-C6	4.42	111.62	106.98
3	A	503	MAN	O5-C5-C6	3.80	110.97	106.98
3	A	506	MAN	O5-C5-C6	3.32	110.46	106.98
3	A	501	NAG	O5-C5-C6	2.53	109.63	106.98
3	A	504	MAN	O5-C5-C6	2.52	109.62	106.98
4	A	521	NAG	O5-C5-C6	2.38	109.47	106.98
4	A	520	NAG	O5-C5-C4	-2.35	107.68	110.65
4	A	520	NAG	O7-C7-N2	2.34	126.79	121.90
4	A	520	NAG	O7-C7-C8	-2.17	117.80	122.04
3	A	501	NAG	O4-C4-C3	-2.12	105.59	110.35
3	A	505	NAG	O5-C5-C6	2.01	109.09	106.98
3	A	501	NAG	C3-C4-C5	2.01	113.79	110.20
4	A	521	NAG	O4-C4-C3	2.01	114.85	110.35

All (2) chirality outliers are listed below:

Mol	Chain	Res	Type	Atom
4	A	520	NAG	C1
3	A	503	MAN	C1

There are no torsion outliers.

There are no ring outliers.

5.6 Ligand geometry

1 ligand is modelled in this entry.

In the following table, the Counts columns list the number of bonds (or angles) for which Mogul statistics could be retrieved, the number of bonds (or angles) that are observed in the model and the number of bonds (or angles) that are defined in the chemical component dictionary. The Link column lists molecule types, if any, to which the group is linked. The Z score for a bond length (or angle) is the number of standard deviations the observed value is removed from the expected value. A bond length (or angle) with $|Z| > 2$ is considered an outlier worth inspection. RMSZ is the root-mean-square of all Z scores of the bond lengths (or angles).

Mol	Type	Chain	Res	Link	Bond lengths			Bond angles		
					Counts	RMSZ	$\# Z > 2$	Counts	RMSZ	$\# Z > 2$
5	CYS	A	395	1	6,6,6	0.94	0	7,7,7	1.37	1 (14%)

In the following table, the Chirals column lists the number of chiral outliers, the number of chiral centers analysed, the number of these observed in the model and the number defined in the chemical component dictionary. Similar counts are reported in the Torsion and Rings columns. '-' means no outliers of that kind were identified.

Mol	Type	Chain	Res	Link	Chirals	Torsions	Rings
5	CYS	A	395	1	-	0/6/6/6	0/0/0/0

There are no bond length outliers.

All (1) bond angle outliers are listed below:

Mol	Chain	Res	Type	Atoms	Z	Observed(°)	Ideal(°)
5	A	395	CYS	OXT-C-O	-2.63	118.13	124.07

There are no chirality outliers.

There are no torsion outliers.

There are no ring outliers.

5.7 Other polymers

There are no such residues in this entry.

5.8 Polymer linkage issues

There are no chain breaks in this entry.

6 Fit of model and data ⓘ

6.1 Protein, DNA and RNA chains ⓘ

EDS was not executed - this section will therefore be empty.

6.2 Non-standard residues in protein, DNA, RNA chains ⓘ

EDS was not executed - this section will therefore be empty.

6.3 Carbohydrates ⓘ

EDS was not executed - this section will therefore be empty.

6.4 Ligands ⓘ

EDS was not executed - this section will therefore be empty.

6.5 Other polymers ⓘ

EDS was not executed - this section will therefore be empty.