



Full wwPDB X-ray Structure Validation Report ⓘ

Feb 27, 2014 – 11:00 PM GMT

PDB ID : 2AQ7
Title : Structure-activity relationships at the 5-position of thiolactomycin: an intact 5(R)-isoprene unit is required for activity against the condensing enzymes from Mycobacterium tuberculosis and Escherichia coli
Authors : Kim, P.; Zhang, Y.M.; Shenoy, G.; Nguyen, Q.A.; Boshoff, H.I.; Manjunatha, U.H.; Goodwin, M.B.; Lonsdale, J.; Price, A.C.; Miller, D.J.
Deposited on : 2005-08-17
Resolution : 2.30 Å(reported)

This is a full wwPDB validation report for a publicly released PDB entry.
We welcome your comments at validation@mail.wwpdb.org
A user guide is available at <http://wwpdb.org/ValidationPDFNotes.html>

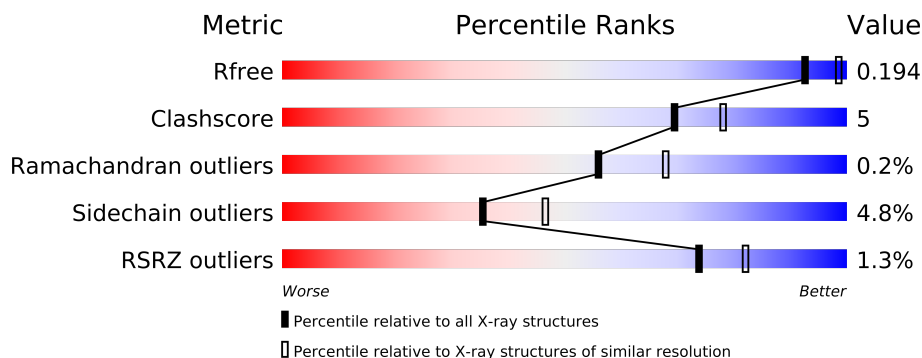
The following versions of software and data (see [references](#)) were used in the production of this report:

MolProbity : 4.02b-467
Mogul : 1.15 2013
Xtriage (Phenix) : dev-1323
EDS : stable22639
Percentile statistics : 21963
Refmac : 5.8.0049
CCP4 : 6.3.0 (Settle)
Ideal geometry (proteins) : Engh & Huber (2001)
Ideal geometry (DNA, RNA) : Parkinson et. al. (1996)
Validation Pipeline (wwPDB-VP) : stable22683

1 Overall quality at a glance

The reported resolution of this entry is 2.30 Å.

Percentile scores (ranging between 0-100) for global validation metrics of the entry are shown in the following graphic. The table shows the number of entries on which the scores are based.



Metric	Whole archive (#Entries)	Similar resolution (#Entries, resolution range(Å))
R_{free}	66092	2929 (2.30-2.30)
Clashscore	79885	3679 (2.30-2.30)
Ramachandran outliers	78287	3642 (2.30-2.30)
Sidechain outliers	78261	3641 (2.30-2.30)
RSRZ outliers	66119	2930 (2.30-2.30)

The table below summarises the geometric issues observed across the polymeric chains and their fit to the electron density. The red, orange, yellow and green segments on the lower bar indicate the fraction of residues that contain outliers for ≥ 3 , 2, 1 and 0 types of geometric quality criteria. The upper red bar (where present) indicates the fraction of residues that have poor fit to the electron density.

Mol	Chain	Length	Quality of chain
1	A	406	
1	B	406	
1	C	406	
1	D	406	

The following table lists non-polymeric compounds that are outliers for geometric or electron-density-fit criteria:

Mol	Type	Chain	Res	Geometry	Electron density
2	TL5	A	600	-	X
2	TL5	B	601	-	X
2	TL5	D	603	-	X

2 Entry composition i

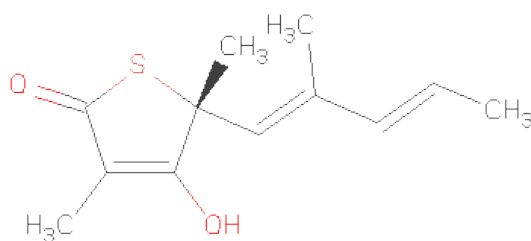
There are 3 unique types of molecules in this entry. The entry contains 12408 atoms, of which 0 are hydrogen and 0 are deuterium.

In the tables below, the ZeroOcc column contains the number of atoms modelled with zero occupancy, the AltConf column contains the number of residues with at least one atom in alternate conformation and the Trace column contains the number of residues modelled with at most 2 atoms.

- Molecule 1 is a protein called 3-oxoacyl-[acyl-carrier-protein]synthase I.

Mol	Chain	Residues	Atoms					ZeroOcc	AltConf	Trace
1	A	404	Total	C	N	O	S	0	0	0
			2960	1841	516	581	22			
1	B	403	Total	C	N	O	S	0	0	0
			2955	1838	515	580	22			
1	C	403	Total	C	N	O	S	0	0	0
			2955	1838	515	580	22			
1	D	403	Total	C	N	O	S	0	0	0
			2955	1838	515	580	22			

- Molecule 2 is (5R)-4-HYDROXY-3,5-DIMETHYL-5-[(1E,3E)-2-METHYLPENTA-1,3-DIENYL]THIOPHEN-2(5H)-ONE (three-letter code: TL5) (formula: C₁₂H₁₆O₂S).



Mol	Chain	Residues	Atoms				ZeroOcc	AltConf
2	A	1	Total	C	O	S	0	0
			15	12	2	1		
2	B	1	Total	C	O	S	0	0
			15	12	2	1		

Continued on next page...

Continued from previous page...

Mol	Chain	Residues	Atoms				ZeroOcc	AltConf
2	D	1	Total	C	O	S	0	0
			15	12	2	1		

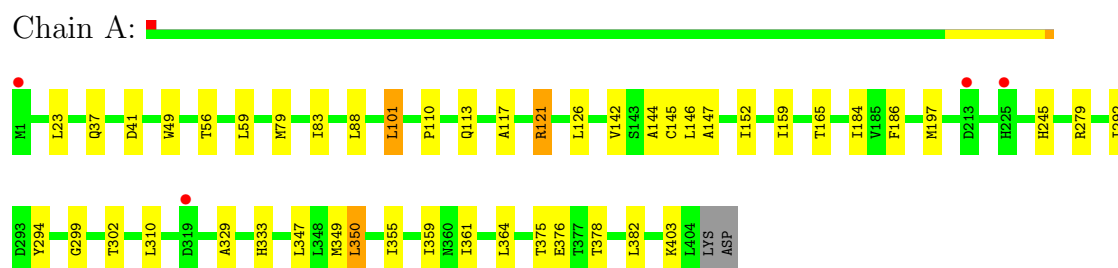
- Molecule 3 is water.

Mol	Chain	Residues	Atoms		ZeroOcc	AltConf
3	A	123	Total	O	0	0
			123	123		
3	B	143	Total	O	0	0
			143	143		
3	C	126	Total	O	0	0
			126	126		
3	D	146	Total	O	0	0
			146	146		

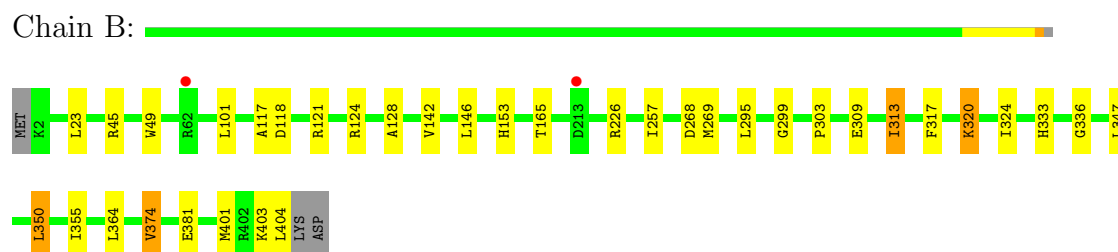
3 Residue-property plots

These plots are drawn for all protein, RNA and DNA chains in the entry. The first graphic for a chain summarises the proportions of errors displayed in the second graphic. The second graphic shows the sequence view annotated by issues in geometry and electron density. Residues are color-coded according to the number of geometric quality criteria for which they contain at least one outlier: green = 0, yellow = 1, orange = 2 and red = 3 or more. A red dot above a residue indicates a poor fit to the electron density ($RSRZ > 2$). Stretches of 2 or more consecutive residues without any outlier are shown as a green connector. Residues present in the sample, but not in the model, are shown in grey.

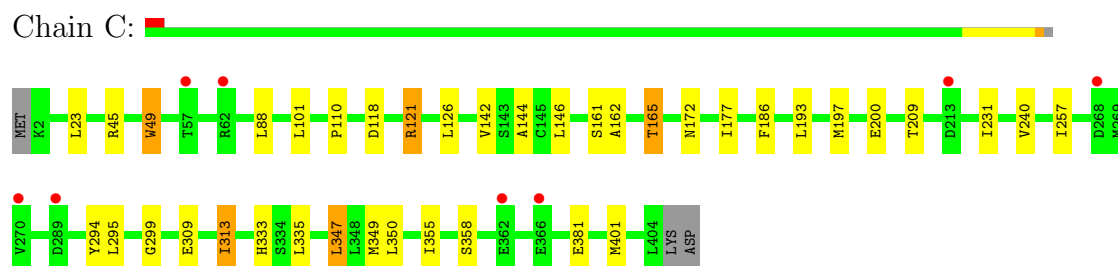
- Molecule 1: 3-oxoacyl-[acyl-carrier-protein]synthase I



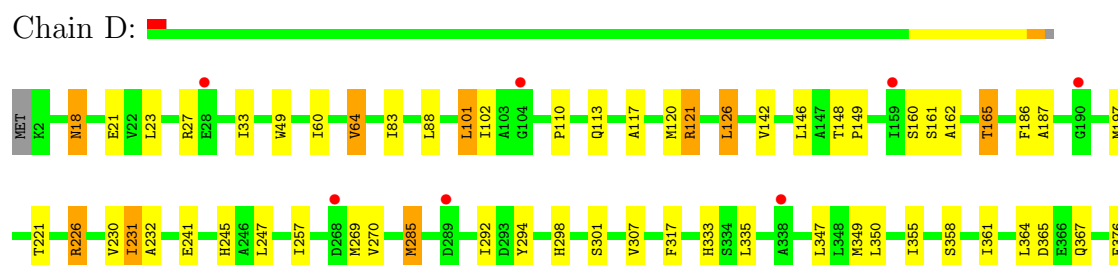
- Molecule 1: 3-oxoacyl-[acyl-carrier-protein]synthase I



- Molecule 1: 3-oxoacyl-[acyl-carrier-protein]synthase I



- Molecule 1: 3-oxoacyl-[acyl-carrier-protein]synthase I





4 Data and refinement statistics

Property	Value	Source
Space group	P 21 21 21	Depositor
Cell constants a, b, c, α , β , γ	59.12Å 139.00Å 212.46Å 90.00° 90.00° 90.00°	Depositor
Resolution (Å)	38.78 – 2.30 38.77 – 2.30	Depositor EDS
% Data completeness (in resolution range)	96.2 (38.78-2.30) 96.1 (38.77-2.30)	Depositor EDS
R_{merge}	0.09	Depositor
R_{sym}	(Not available)	Depositor
$\langle I/\sigma(I) \rangle$ ¹	7.92 (at 2.29Å)	Xtriage
Refinement program	REFMAC 5.2.0005	Depositor
R, R_{free}	0.182 , 0.228 0.193 , 0.194	Depositor DCC
R_{free} test set	3807 reflections (5.29%)	DCC
Wilson B-factor (Å ²)	18.1	Xtriage
Anisotropy	0.114	Xtriage
Bulk solvent k_{sol} (e/Å ³), B_{sol} (Å ²)	0.38 , 16.4	EDS
Estimated twinning fraction	No twinning to report.	Xtriage
L-test for twinning	$\langle L \rangle = 0.48$, $\langle L^2 \rangle = 0.31$	Xtriage
Outliers	0 of 75776 reflections	Xtriage
F_o, F_c correlation	0.93	EDS
Total number of atoms	12408	wwPDB-VP
Average B, all atoms (Å ²)	19.0	wwPDB-VP

Xtriage's analysis on translational NCS is as follows: *The largest off-origin peak in the Patterson function is 3.32% of the height of the origin peak. No significant pseudotranslation is detected.*

¹Intensities estimated from amplitudes.

5 Model quality

5.1 Standard geometry

Bond lengths and bond angles in the following residue types are not validated in this section: TL5

The Z score for a bond length (or angle) is the number of standard deviations the observed value is removed from the expected value. A bond length (or angle) with $|Z| > 5$ is considered an outlier worth inspection. RMSZ is the root-mean-square of all Z scores of the bond lengths (or angles).

Mol	Chain	Bond lengths		Bond angles	
		RMSZ	$\# Z > 5$	RMSZ	$\# Z > 5$
1	A	0.37	0/3008	0.58	0/4065
1	B	0.38	0/3003	0.60	0/4058
1	C	0.38	0/3003	0.59	1/4058 (0.0%)
1	D	0.40	0/3003	0.60	1/4058 (0.0%)
All	All	0.38	0/12017	0.59	2/16239 (0.0%)

There are no bond length outliers.

All (2) bond angle outliers are listed below:

Mol	Chain	Res	Type	Atoms	Z	Observed(°)	Ideal(°)
1	D	226	ARG	NE-CZ-NH1	5.24	122.92	120.30
1	C	121	ARG	NE-CZ-NH2	-5.04	117.78	120.30

There are no chirality outliers.

There are no planarity outliers.

5.2 Close contacts

In the following table, the Non-H and H(model) columns list the number of non-hydrogen atoms and hydrogen atoms in the chain respectively. The H(added) column lists the number of hydrogens added by MolProbity. The Clashes column lists the number of clashes within the asymmetric unit, and the number in parentheses is this value normalized per 1000 atoms of the molecule in the chain. The Symm-Clashes column gives symmetry related clashes, in the same way as for the Clashes column.

Mol	Chain	Non-H	H(model)	H(added)	Clashes	Symm-Clashes
1	A	2960	0	2915	28	0
1	B	2955	0	2910	21	0
1	C	2955	0	2910	19	0

Continued on next page...

Continued from previous page...

Mol	Chain	Non-H	H(model)	H(added)	Clashes	Symm-Clashes
1	D	2955	0	2910	43	0
2	A	15	0	15	2	0
2	B	15	0	15	1	0
2	D	15	0	15	6	0
3	A	123	0	0	1	0
3	B	143	0	0	1	0
3	C	126	0	0	0	0
3	D	146	0	0	3	0
All	All	12408	0	11690	110	0

Clashscore is defined as the number of clashes calculated for the entry per 1000 atoms (including hydrogens) of the entry. The overall clashscore for this entry is 5.

All (110) close contacts within the same asymmetric unit are listed below.

Atom-1	Atom-2	Distance(Å)	Clash(Å)
1:D:285:MET:SD	1:D:292:ILE:HD11	2.13	0.89
1:D:221:THR:O	1:D:361:ILE:HD11	1.76	0.86
1:B:309:GLU:O	1:B:313:ILE:HD13	1.84	0.78
1:A:101:LEU:HB2	1:A:152:ILE:HD13	1.65	0.77
1:C:349:MET:HE3	1:C:355:ILE:HA	1.67	0.75
1:A:79:MET:O	1:A:83:ILE:HD13	1.86	0.75
1:B:295:LEU:HB3	1:B:324:ILE:HD12	1.71	0.72
1:D:285:MET:HE1	1:D:292:ILE:HD11	1.70	0.71
1:D:285:MET:CE	1:D:292:ILE:HD11	2.21	0.70
1:D:162:ALA:O	1:D:165:THR:HG23	1.90	0.70
1:C:162:ALA:O	1:C:165:THR:HG23	1.94	0.67
1:C:309:GLU:O	1:C:313:ILE:HD13	1.97	0.65
1:B:117:ALA:O	1:B:121:ARG:HD2	1.98	0.64
1:D:292:ILE:HD13	1:D:317:PHE:HE2	1.67	0.60
1:A:350:LEU:O	1:A:403:LYS:NZ	2.35	0.59
1:C:231:ILE:HD11	1:C:335:LEU:HD11	1.85	0.59
1:D:292:ILE:HD12	1:D:292:ILE:N	2.19	0.58
1:A:147:ALA:HA	1:A:152:ILE:HD12	1.85	0.58
1:D:257:ILE:HD13	1:D:401:MET:HG2	1.86	0.58
1:D:221:THR:O	1:D:361:ILE:CD1	2.52	0.57
1:D:349:MET:HE3	1:D:355:ILE:HA	1.85	0.57
1:D:162:ALA:O	1:D:165:THR:CG2	2.52	0.56
1:D:376:GLU:O	1:D:378:THR:HG22	2.06	0.55
1:C:161:SER:H	1:C:165:THR:HG22	1.72	0.55
1:D:142:VAL:O	1:D:146:LEU:HG	2.06	0.55
1:D:161:SER:H	1:D:165:THR:HG22	1.70	0.55
1:C:177:ILE:CD1	1:C:240:VAL:HG12	2.37	0.54

Continued on next page...

Continued from previous page...

Atom-1	Atom-2	Distance(Å)	Clash(Å)
1:B:142:VAL:O	1:B:146:LEU:HG	2.09	0.53
1:D:117:ALA:O	1:D:121:ARG:HD2	2.08	0.53
1:C:257:ILE:HD13	1:C:401:MET:HG2	1.90	0.52
2:D:603:TL5:H112	2:D:603:TL5:H103	1.92	0.52
1:A:349:MET:HE3	1:A:355:ILE:HA	1.90	0.52
1:D:27:ARG:HD3	3:D:607:HOH:O	2.10	0.52
1:A:145:CYS:HA	1:B:269:MET:CE	2.40	0.52
1:C:349:MET:CE	1:C:355:ILE:HA	2.37	0.51
1:D:241:GLU:OE1	1:D:245:HIS:HD2	1.93	0.50
1:A:184:ILE:HD11	1:A:245:HIS:CE1	2.48	0.49
1:D:60:ILE:HG22	1:D:64:VAL:HG22	1.95	0.49
1:C:162:ALA:O	1:C:165:THR:CG2	2.61	0.49
1:A:142:VAL:O	1:A:146:LEU:HG	2.12	0.49
1:B:355:ILE:HG21	1:B:374:VAL:HG11	1.95	0.48
1:C:118:ASP:OD1	1:D:121:ARG:NH2	2.41	0.48
1:D:269:MET:O	2:D:603:TL5:H122	2.14	0.48
1:A:145:CYS:HA	1:B:269:MET:HE3	1.95	0.48
1:C:294:TYR:CD2	1:C:349:MET:HE2	2.49	0.47
1:D:294:TYR:CD2	1:D:349:MET:HE2	2.50	0.47
1:B:317:PHE:O	1:B:320:LYS:HG3	2.14	0.47
1:B:124:ARG:HB2	1:B:128:ALA:HB2	1.94	0.47
1:A:279:ARG:NH2	1:B:153:HIS:O	2.47	0.47
1:A:294:TYR:CD2	1:A:349:MET:HE2	2.50	0.47
1:D:231:ILE:HD11	1:D:335:LEU:HD11	1.97	0.47
1:D:298:HIS:HE2	2:D:603:TL5:C1	2.28	0.47
1:A:359:ILE:C	1:A:359:ILE:HD12	2.34	0.47
1:A:292:ILE:HD12	1:A:292:ILE:N	2.30	0.47
1:B:226:ARG:HH11	1:B:303:PRO:HA	1.79	0.47
1:D:160:SER:HB2	3:D:749:HOH:O	2.15	0.46
2:A:600:TL5:H103	2:A:600:TL5:H112	1.96	0.46
1:D:285:MET:SD	1:D:292:ILE:CD1	2.95	0.46
1:D:231:ILE:HD11	1:D:335:LEU:CD1	2.46	0.46
1:D:18:ASN:C	1:D:18:ASN:HD22	2.19	0.46
1:D:231:ILE:HD12	1:D:232:ALA:N	2.31	0.46
1:D:33:ILE:HD12	1:D:230:VAL:HG11	1.98	0.46
2:B:601:TL5:H112	2:B:601:TL5:H103	1.98	0.45
1:A:294:TYR:CE2	1:A:349:MET:HE2	2.52	0.45
1:A:159:ILE:O	1:A:165:THR:HG23	2.16	0.45
1:A:355:ILE:HD11	1:A:382:LEU:HD21	1.98	0.45
1:A:117:ALA:O	1:A:121:ARG:HD2	2.16	0.45
1:D:160:SER:HA	1:D:165:THR:HB	1.98	0.45
1:A:56:THR:HA	1:A:59:LEU:HD22	1.99	0.45

Continued on next page...

Continued from previous page...

Atom-1	Atom-2	Distance(Å)	Clash(Å)
2:D:603:TL5:H111	3:D:694:HOH:O	2.16	0.45
1:D:148:THR:HB	1:D:149:PRO:CD	2.47	0.45
1:C:142:VAL:O	1:C:146:LEU:HG	2.17	0.44
1:B:257:ILE:CD1	1:B:401:MET:HG2	2.48	0.44
1:C:110:PRO:HG2	1:C:197:MET:HB2	2.00	0.44
1:D:18:ASN:ND2	1:D:21:GLU:H	2.16	0.44
1:B:350:LEU:HD22	1:B:403:LYS:HG3	2.00	0.44
1:A:144:ALA:O	1:B:269:MET:HE1	2.18	0.44
1:D:110:PRO:HG2	1:D:197:MET:HB2	2.01	0.43
1:A:302:THR:HG22	3:A:670:HOH:O	2.18	0.43
1:C:347:LEU:HD13	1:C:401:MET:SD	2.59	0.43
2:A:600:TL5:H111	2:A:600:TL5:H8	1.81	0.42
1:A:294:TYR:CZ	1:A:349:MET:HE1	2.54	0.42
1:D:83:ILE:HD11	1:D:186:PHE:CZ	2.55	0.42
1:A:37:GLN:OE1	1:A:41:ASP:OD2	2.36	0.42
1:A:110:PRO:HG2	1:A:197:MET:HB2	2.00	0.42
1:D:349:MET:CE	1:D:355:ILE:HA	2.50	0.42
1:D:226:ARG:NH2	1:D:365:ASP:OD1	2.53	0.42
1:A:101:LEU:HD23	1:A:186:PHE:HB2	2.01	0.42
1:C:200:GLU:OE2	1:D:113:GLN:NE2	2.53	0.42
1:D:120:MET:HE1	1:D:126:LEU:HD13	2.01	0.42
1:B:268:ASP:HB3	3:B:721:HOH:O	2.20	0.42
1:C:45:ARG:HH11	1:C:209:THR:HG21	1.85	0.42
1:A:361:ILE:HD12	1:A:375:THR:HG22	2.01	0.41
1:A:294:TYR:CE2	1:A:349:MET:CE	3.02	0.41
1:D:102:ILE:O	1:D:187:ALA:HA	2.20	0.41
1:A:329:ALA:O	1:A:359:ILE:HD11	2.20	0.41
1:D:101:LEU:HD23	1:D:186:PHE:HB2	2.02	0.41
1:A:121:ARG:NH2	1:B:118:ASP:OD1	2.47	0.41
1:B:257:ILE:HD13	1:B:401:MET:HG2	2.03	0.41
1:B:165:THR:HB	1:B:336:GLY:HA2	2.03	0.41
2:D:603:TL5:H113	2:D:603:TL5:S1	2.61	0.41
1:C:49:TRP:CE3	1:C:193:LEU:HG	2.56	0.41
1:B:101:LEU:C	1:B:101:LEU:HD13	2.41	0.41
1:B:117:ALA:O	1:B:121:ARG:CD	2.68	0.40
1:D:161:SER:OG	1:D:165:THR:HA	2.21	0.40
2:D:603:TL5:H111	2:D:603:TL5:H8	1.82	0.40
1:B:226:ARG:NH1	1:B:303:PRO:HA	2.36	0.40
1:C:144:ALA:HB1	1:D:393:GLY:HA3	2.02	0.40
1:C:101:LEU:HD23	1:C:186:PHE:HB2	2.02	0.40
1:D:307:VAL:HG22	1:D:367:GLN:HB2	2.04	0.40

There are no symmetry-related clashes.

5.3 Torsion angles

5.3.1 Protein backbone ⓘ

In the following table, the Percentiles column shows the percent Ramachandran outliers of the chain as a percentile score with respect to all X-ray entries followed by that with respect to entries of similar resolution. The Analysed column shows the number of residues for which the backbone conformation was analysed, and the total number of residues.

Mol	Chain	Analysed	Favoured	Allowed	Outliers	Percentiles	
1	A	402/406 (99%)	384 (96%)	17 (4%)	1 (0%)	56	68
1	B	401/406 (99%)	388 (97%)	12 (3%)	1 (0%)	56	68
1	C	401/406 (99%)	388 (97%)	12 (3%)	1 (0%)	56	68
1	D	401/406 (99%)	386 (96%)	14 (4%)	1 (0%)	56	68
All	All	1605/1624 (99%)	1546 (96%)	55 (3%)	4 (0%)	56	68

All (4) Ramachandran outliers are listed below:

Mol	Chain	Res	Type
1	A	299	GLY
1	C	299	GLY
1	B	299	GLY
1	D	301	SER

5.3.2 Protein sidechains ⓘ

In the following table, the Percentiles column shows the percent sidechain outliers of the chain as a percentile score with respect to all X-ray entries followed by that with respect to entries of similar resolution. The Analysed column shows the number of residues for which the sidechain conformation was analysed, and the total number of residues.

Mol	Chain	Analysed	Rotameric	Outliers	Percentiles	
1	A	306/309 (99%)	292 (95%)	14 (5%)	37	48
1	B	306/309 (99%)	294 (96%)	12 (4%)	43	57
1	C	306/309 (99%)	292 (95%)	14 (5%)	37	48
1	D	306/309 (99%)	287 (94%)	19 (6%)	26	33
All	All	1224/1236 (99%)	1165 (95%)	59 (5%)	35	46

All (59) residues with a non-rotameric sidechain are listed below:

Mol	Chain	Res	Type
1	A	23	LEU
1	A	49	TRP
1	A	88	LEU
1	A	101	LEU
1	A	113	GLN
1	A	121	ARG
1	A	126	LEU
1	A	310	LEU
1	A	333	HIS
1	A	347	LEU
1	A	350	LEU
1	A	364	LEU
1	A	376	GLU
1	A	378	THR
1	B	23	LEU
1	B	45	ARG
1	B	49	TRP
1	B	313	ILE
1	B	320	LYS
1	B	333	HIS
1	B	347	LEU
1	B	350	LEU
1	B	364	LEU
1	B	374	VAL
1	B	381	GLU
1	B	404	LEU
1	C	23	LEU
1	C	49	TRP
1	C	88	LEU
1	C	121	ARG
1	C	126	LEU
1	C	165	THR
1	C	172	ASN
1	C	295	LEU
1	C	313	ILE
1	C	333	HIS
1	C	347	LEU
1	C	350	LEU
1	C	358	SER
1	C	381	GLU
1	D	18	ASN
1	D	23	LEU
1	D	49	TRP

Continued on next page...

Continued from previous page...

Mol	Chain	Res	Type
1	D	64	VAL
1	D	88	LEU
1	D	101	LEU
1	D	121	ARG
1	D	126	LEU
1	D	165	THR
1	D	231	ILE
1	D	247	LEU
1	D	270	VAL
1	D	285	MET
1	D	333	HIS
1	D	347	LEU
1	D	350	LEU
1	D	358	SER
1	D	364	LEU
1	D	378	THR

Some sidechains can be flipped to improve hydrogen bonding and reduce clashes. All (19) such sidechains are listed below:

Mol	Chain	Res	Type
1	A	37	GLN
1	A	113	GLN
1	A	172	ASN
1	A	341	GLN
1	B	19	GLN
1	B	37	GLN
1	B	172	ASN
1	B	341	GLN
1	B	372	ASN
1	C	37	GLN
1	C	172	ASN
1	C	341	GLN
1	C	372	ASN
1	D	18	ASN
1	D	37	GLN
1	D	172	ASN
1	D	245	HIS
1	D	341	GLN
1	D	372	ASN

5.3.3 RNA ⓘ

There are no RNA chains in this entry.

5.4 Non-standard residues in protein, DNA, RNA chains ⓘ

There are no non-standard protein/DNA/RNA residues in this entry.

5.5 Carbohydrates ⓘ

There are no carbohydrates in this entry.

5.6 Ligand geometry ⓘ

3 ligands are modelled in this entry.

In the following table, the Counts columns list the number of bonds (or angles) for which Mogul statistics could be retrieved, the number of bonds (or angles) that are observed in the model and the number of bonds (or angles) that are defined in the chemical component dictionary. The Link column lists molecule types, if any, to which the group is linked. The Z score for a bond length (or angle) is the number of standard deviations the observed value is removed from the expected value. A bond length (or angle) with $|Z| > 2$ is considered an outlier worth inspection. RMSZ is the root-mean-square of all Z scores of the bond lengths (or angles).

Mol	Type	Chain	Res	Link	Bond lengths			Bond angles		
					Counts	RMSZ	$\# Z > 2$	Counts	RMSZ	$\# Z > 2$
2	TL5	A	600	-	15,15,15	2.92	3 (20%)	22,22,22	1.75	5 (22%)
2	TL5	B	601	-	15,15,15	2.95	3 (20%)	22,22,22	1.68	5 (22%)
2	TL5	D	603	-	15,15,15	2.97	3 (20%)	22,22,22	1.75	5 (22%)

In the following table, the Chirals column lists the number of chiral outliers, the number of chiral centers analysed, the number of these observed in the model and the number defined in the chemical component dictionary. Similar counts are reported in the Torsion and Rings columns. '-' means no outliers of that kind were identified.

Mol	Type	Chain	Res	Link	Chirals	Torsions	Rings
2	TL5	A	600	-	-	1/8/27/27	0/1/1/1
2	TL5	B	601	-	-	1/8/27/27	0/1/1/1
2	TL5	D	603	-	-	1/8/27/27	0/1/1/1

All (9) bond length outliers are listed below:

Mol	Chain	Res	Type	Atoms	Z	Observed(Å)	Ideal(Å)
2	D	603	TL5	C1-S1	-8.27	1.66	1.78
2	B	601	TL5	C1-S1	-8.16	1.66	1.78
2	A	600	TL5	C1-S1	-7.97	1.67	1.78
2	D	603	TL5	C1-C2	-6.01	1.33	1.47
2	B	601	TL5	C1-C2	-5.91	1.33	1.47
2	A	600	TL5	C1-C2	-5.91	1.33	1.47
2	B	601	TL5	C4-S1	-5.04	1.77	1.84
2	A	600	TL5	C4-S1	-5.01	1.77	1.84
2	D	603	TL5	C4-S1	-4.94	1.77	1.84

All (15) bond angle outliers are listed below:

Mol	Chain	Res	Type	Atoms	Z	Observed(°)	Ideal(°)
2	A	600	TL5	C9-C2-C3	-3.60	123.77	131.86
2	B	601	TL5	C9-C2-C3	-3.53	123.94	131.86
2	D	603	TL5	C2-C1-S1	3.52	115.80	111.26
2	D	603	TL5	C4-C5-C6	-3.46	124.18	130.52
2	B	601	TL5	C12-C8-C7	-3.32	119.11	125.23
2	A	600	TL5	C2-C1-S1	3.31	115.53	111.26
2	B	601	TL5	C2-C1-S1	3.25	115.46	111.26
2	D	603	TL5	C9-C2-C3	-3.18	124.72	131.86
2	A	600	TL5	C12-C8-C7	-3.16	119.40	125.23
2	D	603	TL5	C12-C8-C7	-3.14	119.43	125.23
2	A	600	TL5	C4-C5-C6	-3.00	125.02	130.52
2	A	600	TL5	O1-C1-C2	-2.62	123.21	127.86
2	D	603	TL5	O1-C1-C2	-2.55	123.34	127.86
2	B	601	TL5	C4-C5-C6	-2.54	125.86	130.52
2	B	601	TL5	O1-C1-C2	-2.44	123.54	127.86

There are no chirality outliers.

All (3) torsion outliers are listed below:

Mol	Chain	Res	Type	Atoms
2	B	601	TL5	C6-C5-C4-C3
2	A	600	TL5	C6-C5-C4-C3
2	D	603	TL5	C6-C5-C4-C3

There are no ring outliers.

5.7 Other polymers ⓘ

There are no such residues in this entry.

5.8 Polymer linkage issues

There are no chain breaks in this entry.

6 Fit of model and data

6.1 Protein, DNA and RNA chains

In the following table, the column labelled ‘#RSRZ> 2’ contains the number (and percentage) of RSRZ outliers, followed by percent RSRZ outliers for the chain as percentile scores relative to all X-ray entries and entries of similar resolution. The OWAB column contains the minimum, median, 95th percentile and maximum values of the occupancy-weighted average B-factor per residue. The column labelled ‘Q< 0.9’ lists the number of (and percentage) of residues with an average occupancy less than 0.9.

Mol	Chain	Analysed	<RSRZ>	#RSRZ>2	OWAB(Å ²)	Q<0.9
1	A	404/406 (99%)	-0.11	4 (0%) 79 87	12, 20, 35, 46	0
1	B	403/406 (99%)	-0.21	2 (0%) 88 94	9, 17, 26, 33	0
1	C	403/406 (99%)	-0.07	8 (1%) 62 72	12, 20, 29, 39	0
1	D	403/406 (99%)	-0.14	7 (1%) 67 76	9, 17, 25, 33	0
All	All	1613/1624 (99%)	-0.13	21 (1%) 74 82	9, 18, 29, 46	0

All (21) RSRZ outliers are listed below:

Mol	Chain	Res	Type	RSRZ
1	A	319	ASP	4.3
1	C	270	VAL	3.8
1	C	213	ASP	3.4
1	B	62	ARG	2.7
1	A	1	MET	2.7
1	C	62	ARG	2.7
1	C	57	THR	2.5
1	A	213	ASP	2.5
1	C	362	GLU	2.4
1	D	190	GLY	2.2
1	C	268	ASP	2.2
1	D	28	GLU	2.2
1	C	289	ASP	2.2
1	D	268	ASP	2.2
1	D	289	ASP	2.2
1	D	104	GLY	2.2
1	C	366	GLU	2.1
1	D	159	ILE	2.1
1	B	213	ASP	2.1
1	A	225	HIS	2.1
1	D	338	ALA	2.0

6.2 Non-standard residues in protein, DNA, RNA chains ⓘ

There are no non-standard protein/DNA/RNA residues in this entry.

6.3 Carbohydrates ⓘ

There are no carbohydrates in this entry.

6.4 Ligands ⓘ

In the following table, the Atoms column lists the number of modelled atoms in the group and the number defined in the chemical component dictionary. LLDF column lists the quality of electron density of the group with respect to its neighbouring residues in protein, DNA or RNA chains. The B-factors column lists the minimum, median, 95th percentile and maximum values of B factors of atoms in the group. The column labelled 'Q< 0.9' lists the number of atoms with occupancy less than 0.9.

Mol	Type	Chain	Res	Atoms	RSR	LLDF	B-factors(Å ²)	Q<0.9
2	TL5	A	600	15/15	0.27	4.04	26,26,26,26	15
2	TL5	D	603	15/15	0.29	3.27	26,26,26,26	15
2	TL5	B	601	15/15	0.23	2.68	26,26,26,26	15

6.5 Other polymers ⓘ

There are no such residues in this entry.