



# wwPDB X-ray Structure Validation Summary Report

Feb 27, 2014 – 01:21 PM GMT

PDB ID : 2AX1  
Title : Hepatitis C Virus NS5b RNA Polymerase in complex with a covalent inhibitor (5ee)  
Authors : Powers, J.P.; Piper, D.E.; Li, Y.; Mayorga, V.; Anzola, J.; Chen, J.M.; Jaen, J.C.; Lee, G.; Liu, J.; Peterson, M.G.; Tonn, G.R.; Ye, Q.; Walker, N.P.; Wang, Z.  
Deposited on : 2005-09-02  
Resolution : 2.10 Å(reported)

This is a wwPDB validation summary report for a publicly released PDB entry.  
We welcome your comments at [validation@mail.wwpdb.org](mailto:validation@mail.wwpdb.org)  
A user guide is available at <http://wwpdb.org/ValidationPDFNotes.html>

---

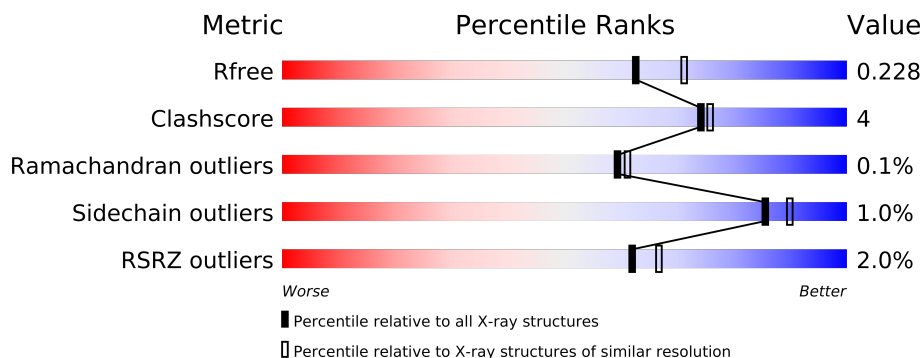
The following versions of software and data (see [references](#)) were used in the production of this report:

MolProbity : 4.02b-467  
Mogul : 1.15 2013  
Xtriage (Phenix) : dev-1323  
EDS : stable22639  
Percentile statistics : 21963  
Refmac : 5.8.0049  
CCP4 : 6.3.0 (Settle)  
Ideal geometry (proteins) : Engh & Huber (2001)  
Ideal geometry (DNA, RNA) : Parkinson et. al. (1996)  
Validation Pipeline (wwPDB-VP) : stable22683

# 1 Overall quality at a glance

The reported resolution of this entry is 2.10 Å.

Percentile scores (ranging between 0-100) for global validation metrics of the entry are shown in the following graphic. The table shows the number of entries on which the scores are based.



Metric	Whole archive (#Entries)	Similar resolution (#Entries, resolution range(Å))
$R_{free}$	66092	3012 (2.10-2.10)
Clashscore	79885	3649 (2.10-2.10)
Ramachandran outliers	78287	3610 (2.10-2.10)
Sidechain outliers	78261	3611 (2.10-2.10)
RSRZ outliers	66119	3013 (2.10-2.10)

The table below summarises the geometric issues observed across the polymeric chains and their fit to the electron density. The red, orange, yellow and green segments on the lower bar indicate the fraction of residues that contain outliers for  $\geq 3$ , 2, 1 and 0 types of geometric quality criteria. The upper red bar (where present) indicates the fraction of residues that have poor fit to the electron density.

Mol	Chain	Length	Quality of chain
1	A	580	
1	B	580	

The following table lists non-polymeric compounds that are outliers for geometric or electron-density-fit criteria:

Mol	Type	Chain	Res	Geometry	Electron density
2	SO4	A	1108	-	X
2	SO4	B	1107	-	X

## 2 Entry composition

There are 4 unique types of molecules in this entry. The entry contains 9587 atoms, of which 0 are hydrogen and 0 are deuterium.

In the tables below, the ZeroOcc column contains the number of atoms modelled with zero occupancy, the AltConf column contains the number of residues with at least one atom in alternate conformation and the Trace column contains the number of residues modelled with at most 2 atoms.

- Molecule 1 is a protein called Genome polypeptide.

Mol	Chain	Residues	Atoms					ZeroOcc	AltConf	Trace
1	A	554	Total	C	N	O	S	0	0	0
			4315	2722	764	798	31			
1	B	561	Total	C	N	O	S	0	0	0
			4359	2749	771	808	31			

There are 42 discrepancies between the modelled and reference sequences:

Chain	Residue	Modelled	Actual	Comment	Reference
A	499	ALA	VAL	ENGINEERED	UNP P26663
A	506	ASN	SER	ENGINEERED	UNP P26663
A	514	ARG	GLN	ENGINEERED	UNP P26663
A	520	ILE	THR	ENGINEERED	UNP P26663
A	540	ALA	PRO	ENGINEERED	UNP P26663
A	543	GLY	SER	ENGINEERED	UNP P26663
A	549	SER	GLY	ENGINEERED	UNP P26663
A	552	THR	VAL	ENGINEERED	UNP P26663
A	563	GLY	SER	ENGINEERED	UNP P26663
A	564	VAL	LEU	ENGINEERED	UNP P26663
A	566	HIS	ARG	ENGINEERED	UNP P26663
A	571	HIS	-	EXPRESSION TAG	UNP P26663
A	572	HIS	-	EXPRESSION TAG	UNP P26663
A	573	HIS	-	EXPRESSION TAG	UNP P26663
A	574	HIS	-	EXPRESSION TAG	UNP P26663
A	575	HIS	-	EXPRESSION TAG	UNP P26663
A	576	HIS	-	EXPRESSION TAG	UNP P26663
A	577	HIS	-	EXPRESSION TAG	UNP P26663
A	578	HIS	-	EXPRESSION TAG	UNP P26663
A	579	HIS	-	EXPRESSION TAG	UNP P26663
A	580	HIS	-	EXPRESSION TAG	UNP P26663
B	499	ALA	VAL	ENGINEERED	UNP P26663
B	506	ASN	SER	ENGINEERED	UNP P26663
B	514	ARG	GLN	ENGINEERED	UNP P26663
B	520	ILE	THR	ENGINEERED	UNP P26663

*Continued on next page...*

*Continued from previous page...*

Chain	Residue	Modelled	Actual	Comment	Reference
B	540	ALA	PRO	ENGINEERED	UNP P26663
B	543	GLY	SER	ENGINEERED	UNP P26663
B	549	SER	GLY	ENGINEERED	UNP P26663
B	552	THR	VAL	ENGINEERED	UNP P26663
B	563	GLY	SER	ENGINEERED	UNP P26663
B	564	VAL	LEU	ENGINEERED	UNP P26663
B	566	HIS	ARG	ENGINEERED	UNP P26663
B	571	HIS	-	EXPRESSION TAG	UNP P26663
B	572	HIS	-	EXPRESSION TAG	UNP P26663
B	573	HIS	-	EXPRESSION TAG	UNP P26663
B	574	HIS	-	EXPRESSION TAG	UNP P26663
B	575	HIS	-	EXPRESSION TAG	UNP P26663
B	576	HIS	-	EXPRESSION TAG	UNP P26663
B	577	HIS	-	EXPRESSION TAG	UNP P26663
B	578	HIS	-	EXPRESSION TAG	UNP P26663
B	579	HIS	-	EXPRESSION TAG	UNP P26663
B	580	HIS	-	EXPRESSION TAG	UNP P26663

- Molecule 2 is SULFATE ION (three-letter code: SO4) (formula: O<sub>4</sub>S).



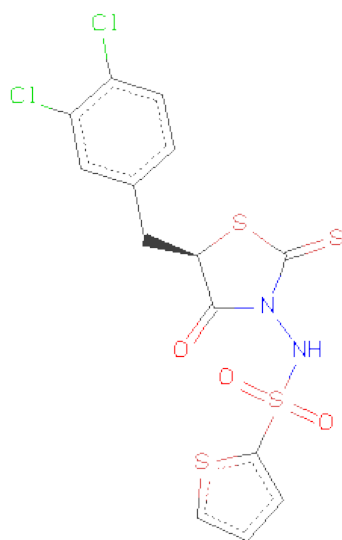
Mol	Chain	Residues	Atoms			ZeroOcc	AltConf
2	A	1	Total	O	S	0	0
			5	4	1		
2	A	1	Total	O	S	0	0
			5	4	1		
2	A	1	Total	O	S	0	0
			5	4	1		

*Continued on next page...*

Continued from previous page...

Mol	Chain	Residues	Atoms			ZeroOcc	AltConf
2	B	1	Total	O	S	0	0
			5	4	1		
2	B	1	Total	O	S	0	0
			5	4	1		
2	B	1	Total	O	S	0	0
			5	4	1		
2	B	1	Total	O	S	0	0
			5	4	1		
2	A	1	Total	O	S	0	0
			5	4	1		

- Molecule 3 is 5R-(3,4-DICHLOROPHENYLMETHYL)-3-(2-THIOPHENESULFO NYLAMINO)-4-OXO-2-THIONOTHIAZOLIDINE (three-letter code: 5EE) (formula: C<sub>14</sub>H<sub>10</sub>Cl<sub>2</sub>N<sub>2</sub>O<sub>3</sub>S<sub>4</sub>).



Mol	Chain	Residues	Atoms					ZeroOcc	AltConf
3	A	1	Total	C	Cl	N	O	S	
			25	14	2	2	3	4	0
3	B	1	Total	C	Cl	N	O	S	
			25	14	2	2	3	4	0

- Molecule 4 is water.

Mol	Chain	Residues	Atoms		ZeroOcc	AltConf
4	A	397	Total	O	0	0
			397	397		

Continued on next page...

*Continued from previous page...*

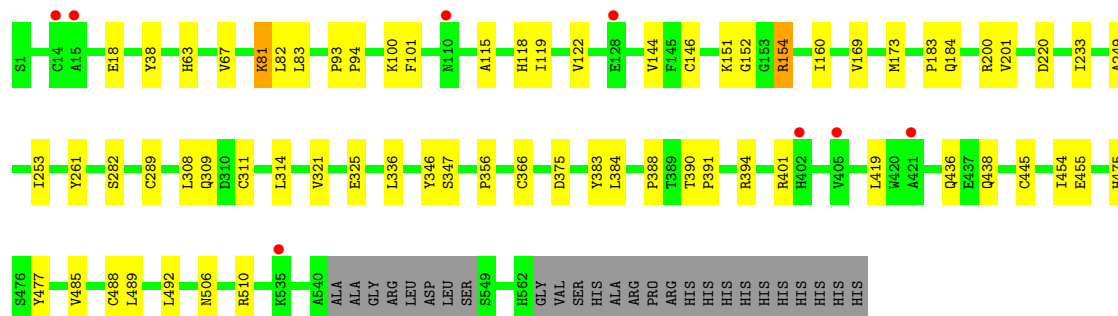
Mol	Chain	Residues	Atoms		ZeroOcc	AltConf
4	B	426	Total 426	O 426	0	0

### 3 Residue-property plots

These plots are drawn for all protein, RNA and DNA chains in the entry. The first graphic for a chain summarises the proportions of errors displayed in the second graphic. The second graphic shows the sequence view annotated by issues in geometry and electron density. Residues are color-coded according to the number of geometric quality criteria for which they contain at least one outlier: green = 0, yellow = 1, orange = 2 and red = 3 or more. A red dot above a residue indicates a poor fit to the electron density ( $\text{RSRZ} > 2$ ). Stretches of 2 or more consecutive residues without any outlier are shown as a green connector. Residues present in the sample, but not in the model, are shown in grey.

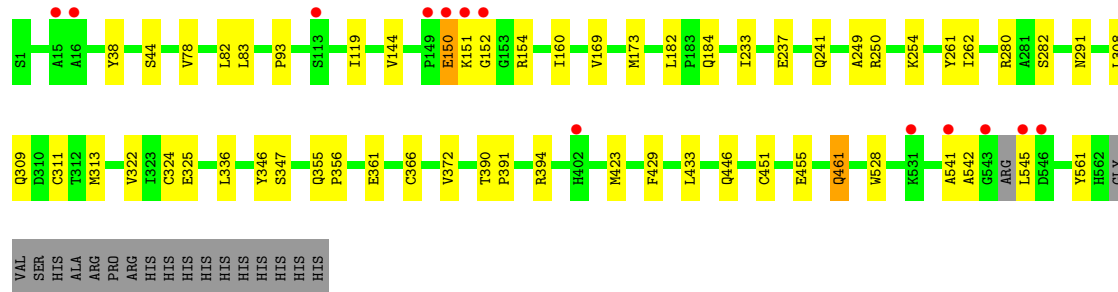
#### • Molecule 1: Genome polyprotein

Chain A: 



#### • Molecule 1: Genome polyprotein

Chain B: 



## 4 Data and refinement statistics

Property	Value	Source
Space group	P 21 21 21	Depositor
Cell constants a, b, c, $\alpha$ , $\beta$ , $\gamma$	87.01Å 86.77Å 162.74Å 90.00° 90.00° 90.00°	Depositor
Resolution (Å)	30.00 – 2.10 29.72 – 2.10	Depositor EDS
% Data completeness (in resolution range)	(Not available) (30.00-2.10) 92.9 (29.72-2.10)	Depositor EDS
$R_{merge}$	(Not available)	Depositor
$R_{sym}$	0.06	Depositor
$\langle I/\sigma(I) \rangle$ <sup>1</sup>	2.80 (at 2.10Å)	Xtriage
Refinement program	CNS	Depositor
R, $R_{free}$	0.202 , 0.229 0.201 , 0.228	Depositor DCC
$R_{free}$ test set	6784 reflections (10.06%)	DCC
Wilson B-factor (Å <sup>2</sup> )	30.6	Xtriage
Anisotropy	0.298	Xtriage
Bulk solvent $k_{sol}$ (e/Å <sup>3</sup> ), $B_{sol}$ (Å <sup>2</sup> )	0.36 , 42.1	EDS
Estimated twinning fraction	0.014 for k,h,-l	Xtriage
L-test for twinning	$\langle  L  \rangle = 0.50$ , $\langle L^2 \rangle = 0.33$	Xtriage
Outliers	0 of 67443 reflections	Xtriage
$F_o, F_c$ correlation	0.95	EDS
Total number of atoms	9587	wwPDB-VP
Average B, all atoms (Å <sup>2</sup> )	30.0	wwPDB-VP

Xtriage's analysis on translational NCS is as follows: *The largest off-origin peak in the Patterson function is 3.12% of the height of the origin peak. No significant pseudotranslation is detected.*

<sup>1</sup>Intensities estimated from amplitudes.



## 5 Model quality

### 5.1 Standard geometry

Bond lengths and bond angles in the following residue types are not validated in this section: 5EE, SO4

The Z score for a bond length (or angle) is the number of standard deviations the observed value is removed from the expected value. A bond length (or angle) with  $|Z| > 5$  is considered an outlier worth inspection. RMSZ is the root-mean-square of all Z scores of the bond lengths (or angles).

Mol	Chain	Bond lengths		Bond angles	
		RMSZ	$\# Z  > 5$	RMSZ	$\# Z  > 5$
1	A	0.33	0/4409	0.57	0/5980
1	B	0.33	0/4453	0.56	0/6040
All	All	0.33	0/8862	0.57	0/12020

There are no bond length outliers.

There are no bond angle outliers.

There are no chirality outliers.

There are no planarity outliers.

### 5.2 Close contacts

In the following table, the Non-H and H(model) columns list the number of non-hydrogen atoms and hydrogen atoms in the chain respectively. The H(added) column lists the number of hydrogens added by MolProbity. The Clashes column lists the number of clashes within the asymmetric unit, and the number in parentheses is this value normalized per 1000 atoms of the molecule in the chain. The Symm-Clashes column gives symmetry related clashes, in the same way as for the Clashes column.

Mol	Chain	Non-H	H(model)	H(added)	Clashes	Symm-Clashes
1	A	4315	0	4335	40	0
1	B	4359	0	4379	32	0
2	A	20	0	0	0	0
2	B	20	0	0	0	0
3	A	25	0	9	0	0
3	B	25	0	9	0	0
4	A	397	0	0	3	0
4	B	426	0	0	0	0
All	All	9587	0	8732	71	0

Clashscore is defined as the number of clashes calculated for the entry per 1000 atoms (including hydrogens) of the entry. The overall clashscore for this entry is 4.

The worst 5 of 71 close contacts within the same asymmetric unit are listed below.

Atom-1	Atom-2	Distance(Å)	Clash(Å)
1:A:200:ARG:HD3	1:A:384:LEU:HD11	1.66	0.77
1:B:461:GLN:HG2	1:B:541:ALA:HB3	1.69	0.74
1:A:445:CYS:SG	1:A:454:ILE:HD12	2.28	0.73
1:B:82:LEU:HD13	1:B:249:ALA:HB2	1.74	0.70
1:B:280:ARG:HD2	1:B:291:ASN:OD1	1.93	0.69

There are no symmetry-related clashes.

## 5.3 Torsion angles

### 5.3.1 Protein backbone ⓘ

In the following table, the Percentiles column shows the percent Ramachandran outliers of the chain as a percentile score with respect to all X-ray entries followed by that with respect to entries of similar resolution. The Analysed column shows the number of residues for which the backbone conformation was analysed, and the total number of residues.

Mol	Chain	Analysed	Favoured	Allowed	Outliers	Percentiles	
1	A	550/580 (95%)	538 (98%)	12 (2%)	0	100	100
1	B	557/580 (96%)	546 (98%)	10 (2%)	1 (0%)	56	57
All	All	1107/1160 (95%)	1084 (98%)	22 (2%)	1 (0%)	59	61

All (1) Ramachandran outliers are listed below:

Mol	Chain	Res	Type
1	B	151	LYS

### 5.3.2 Protein sidechains ⓘ

In the following table, the Percentiles column shows the percent sidechain outliers of the chain as a percentile score with respect to all X-ray entries followed by that with respect to entries of similar resolution. The Analysed column shows the number of residues for which the sidechain conformation was analysed, and the total number of residues.

Mol	Chain	Analysed	Rotameric	Outliers	Percentiles	
1	A	471/492 (96%)	467 (99%)	4 (1%)	89	93

*Continued on next page...*

*Continued from previous page...*

Mol	Chain	Analysed	Rotameric	Outliers	Percentiles	
1	B	475/492 (96%)	470 (99%)	5 (1%)	84	88
All	All	946/984 (96%)	937 (99%)	9 (1%)	85	90

5 of 9 residues with a non-rotameric sidechain are listed below:

Mol	Chain	Res	Type
1	B	150	GLU
1	B	461	GLN
1	B	366	CYS
1	A	184	GLN
1	B	184	GLN

Some sidechains can be flipped to improve hydrogen bonding and reduce clashes. 5 of 12 such sidechains are listed below:

Mol	Chain	Res	Type
1	A	506	ASN
1	B	35	ASN
1	B	330	GLN
1	A	475	HIS
1	B	273	ASN

### 5.3.3 RNA ⓘ

There are no RNA chains in this entry.

## 5.4 Non-standard residues in protein, DNA, RNA chains ⓘ

There are no non-standard protein/DNA/RNA residues in this entry.

## 5.5 Carbohydrates ⓘ

There are no carbohydrates in this entry.

## 5.6 Ligand geometry ⓘ

10 ligands are modelled in this entry.

In the following table, the Counts columns list the number of bonds (or angles) for which Mogul statistics could be retrieved, the number of bonds (or angles) that are observed in the model and

the number of bonds (or angles) that are defined in the chemical component dictionary. The Link column lists molecule types, if any, to which the group is linked. The Z score for a bond length (or angle) is the number of standard deviations the observed value is removed from the expected value. A bond length (or angle) with  $|Z| > 2$  is considered an outlier worth inspection. RMSZ is the root-mean-square of all Z scores of the bond lengths (or angles).

Mol	Type	Chain	Res	Link	Bond lengths			Bond angles		
					Counts	RMSZ	# Z  > 2	Counts	RMSZ	# Z  > 2
3	5EE	A	1001	1	27,27,27	2.44	6 (22%)	38,40,40	1.72	6 (15%)
2	SO4	A	1101	-	4,4,4	1.13	0	6,6,6	0.08	0
2	SO4	A	1102	-	4,4,4	1.24	0	6,6,6	0.10	0
2	SO4	A	1103	-	4,4,4	1.16	0	6,6,6	0.05	0
2	SO4	A	1108	-	4,4,4	1.22	0	6,6,6	0.08	0
3	5EE	B	1002	1	27,27,27	2.39	6 (22%)	38,40,40	1.38	5 (13%)
2	SO4	B	1104	-	4,4,4	1.17	0	6,6,6	0.12	0
2	SO4	B	1105	-	4,4,4	1.27	0	6,6,6	0.06	0
2	SO4	B	1106	-	4,4,4	1.28	0	6,6,6	0.07	0
2	SO4	B	1107	-	4,4,4	1.25	0	6,6,6	0.07	0

In the following table, the Chirals column lists the number of chiral outliers, the number of chiral centers analysed, the number of these observed in the model and the number defined in the chemical component dictionary. Similar counts are reported in the Torsion and Rings columns. '-' means no outliers of that kind were identified.

Mol	Type	Chain	Res	Link	Chirals	Torsions	Rings
3	5EE	A	1001	1	-	0/7/31/31	0/3/3/3
2	SO4	A	1101	-	-	0/0/0/0	0/0/0/0
2	SO4	A	1102	-	-	0/0/0/0	0/0/0/0
2	SO4	A	1103	-	-	0/0/0/0	0/0/0/0
2	SO4	A	1108	-	-	0/0/0/0	0/0/0/0
3	5EE	B	1002	1	-	0/7/31/31	0/3/3/3
2	SO4	B	1104	-	-	0/0/0/0	0/0/0/0
2	SO4	B	1105	-	-	0/0/0/0	0/0/0/0
2	SO4	B	1106	-	-	0/0/0/0	0/0/0/0
2	SO4	B	1107	-	-	0/0/0/0	0/0/0/0

The worst 5 of 12 bond length outliers are listed below:

Mol	Chain	Res	Type	Atoms	Z	Observed(Å)	Ideal(Å)
3	A	1001	5EE	N22-N1	9.47	1.50	1.41
3	B	1002	5EE	N22-N1	8.77	1.49	1.41
3	B	1002	5EE	S19-N22	4.44	1.74	1.65
3	A	1001	5EE	S19-N22	4.40	1.74	1.65
3	B	1002	5EE	C7-N1	-4.15	1.34	1.39

The worst 5 of 11 bond angle outliers are listed below:

Mol	Chain	Res	Type	Atoms	Z	Observed(°)	Ideal(°)
3	A	1001	5EE	C7-C14-S1	-5.77	100.55	105.99
3	A	1001	5EE	C7-N1-N22	4.68	126.12	122.69
3	B	1002	5EE	C7-C14-S1	-3.81	102.40	105.99
3	B	1002	5EE	C27-S3-C24	3.15	93.30	91.91
3	B	1002	5EE	C2-C1-C14	3.04	118.64	113.37

There are no chirality outliers.

There are no torsion outliers.

There are no ring outliers.

## 5.7 Other polymers ⓘ

There are no such residues in this entry.

## 5.8 Polymer linkage issues

There are no chain breaks in this entry.

## 6 Fit of model and data ⓘ

### 6.1 Protein, DNA and RNA chains ⓘ

In the following table, the column labelled ‘#RSRZ> 2’ contains the number (and percentage) of RSRZ outliers, followed by percent RSRZ outliers for the chain as percentile scores relative to all X-ray entries and entries of similar resolution. The OWAB column contains the minimum, median, 95<sup>th</sup> percentile and maximum values of the occupancy-weighted average B-factor per residue. The column labelled ‘Q< 0.9’ lists the number of (and percentage) of residues with an average occupancy less than 0.9.

Mol	Chain	Analysed	<RSRZ>	#RSRZ>2	OWAB(Å <sup>2</sup> )	Q<0.9
1	A	554/580 (95%)	-0.02	8 (1%) 72 76	19, 29, 43, 51	0
1	B	561/580 (96%)	-0.05	13 (2%) 57 62	16, 28, 44, 55	0
All	All	1115/1160 (96%)	-0.04	21 (1%) 62 68	16, 29, 44, 55	0

The worst 5 of 21 RSRZ outliers are listed below:

Mol	Chain	Res	Type	RSRZ
1	A	402	HIS	5.6
1	B	402	HIS	5.5
1	B	149	PRO	5.2
1	B	150	GLU	4.2
1	B	151	LYS	3.4

### 6.2 Non-standard residues in protein, DNA, RNA chains ⓘ

There are no non-standard protein/DNA/RNA residues in this entry.

### 6.3 Carbohydrates ⓘ

There are no carbohydrates in this entry.

### 6.4 Ligands ⓘ

In the following table, the Atoms column lists the number of modelled atoms in the group and the number defined in the chemical component dictionary. LLDF column lists the quality of electron density of the group with respect to its neighbouring residues in protein, DNA or RNA chains. The B-factors column lists the minimum, median, 95<sup>th</sup> percentile and maximum values of B factors of atoms in the group. The column labelled ‘Q< 0.9’ lists the number of atoms with occupancy less than 0.9.

Mol	Type	Chain	Res	Atoms	RSR	LLDF	B-factors( $\text{\AA}^2$ )	Q<0.9
2	SO4	A	1108	5/5	0.37	3.53	90,91,91,91	0
2	SO4	B	1107	5/5	0.18	3.15	94,94,94,94	0
3	5EE	A	1001	25/25	0.14	1.70	43,45,49,49	0
2	SO4	A	1102	5/5	0.15	0.99	58,58,58,58	0
3	5EE	B	1002	25/25	0.13	0.30	41,45,47,48	0
2	SO4	B	1106	5/5	0.18	-0.34	82,82,82,82	0
2	SO4	A	1103	5/5	0.15	-0.49	55,55,56,56	0
2	SO4	B	1104	5/5	0.08	-0.71	40,40,40,40	0
2	SO4	A	1101	5/5	0.07	-1.02	50,51,51,51	0
2	SO4	B	1105	5/5	0.08	-1.09	36,36,36,37	0

## 6.5 Other polymers ⓘ

There are no such residues in this entry.