



Full wwPDB X-ray Structure Validation Report

Feb 27, 2014 – 03:08 PM GMT

PDB ID : 2B0Z
Title : Crystal structure of the protein-protein complex between F82I cytochrome c and cytochrome c peroxidase
Authors : Kang, S.A.; Crane, B.R.
Deposited on : 2005-09-15
Resolution : 2.70 Å(reported)

This is a full wwPDB validation report for a publicly released PDB entry.
We welcome your comments at validation@mail.wwpdb.org
A user guide is available at <http://wwpdb.org/ValidationPDFNotes.html>

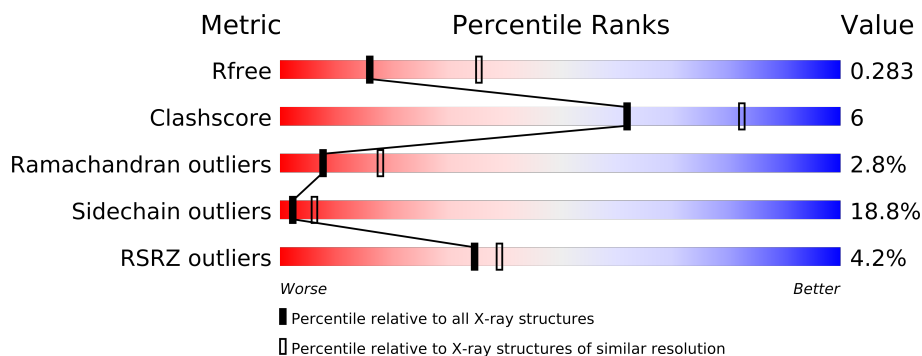
The following versions of software and data (see [references](#)) were used in the production of this report:

MolProbity : 4.02b-467
Mogul : 1.15 2013
Xtriage (Phenix) : dev-1323
EDS : stable22639
Percentile statistics : 21963
Refmac : 5.8.0049
CCP4 : 6.3.0 (Settle)
Ideal geometry (proteins) : Engh & Huber (2001)
Ideal geometry (DNA, RNA) : Parkinson et. al. (1996)
Validation Pipeline (wwPDB-VP) : stable22683

1 Overall quality at a glance

The reported resolution of this entry is 2.70 Å.

Percentile scores (ranging between 0-100) for global validation metrics of the entry are shown in the following graphic. The table shows the number of entries on which the scores are based.



Metric	Whole archive (#Entries)	Similar resolution (#Entries, resolution range(Å))
R_{free}	66092	1557 (2.70-2.70)
Clashscore	79885	1939 (2.70-2.70)
Ramachandran outliers	78287	1905 (2.70-2.70)
Sidechain outliers	78261	1905 (2.70-2.70)
RSRZ outliers	66119	1559 (2.70-2.70)

The table below summarises the geometric issues observed across the polymeric chains and their fit to the electron density. The red, orange, yellow and green segments on the lower bar indicate the fraction of residues that contain outliers for ≥ 3 , 2, 1 and 0 types of geometric quality criteria. The upper red bar (where present) indicates the fraction of residues that have poor fit to the electron density.

Mol	Chain	Length	Quality of chain
1	A	294	
2	B	108	

2 Entry composition i

There are 5 unique types of molecules in this entry. The entry contains 3407 atoms, of which 0 are hydrogen and 0 are deuterium.

In the tables below, the ZeroOcc column contains the number of atoms modelled with zero occupancy, the AltConf column contains the number of residues with at least one atom in alternate conformation and the Trace column contains the number of residues modelled with at most 2 atoms.

- Molecule 1 is a protein called Cytochrome c peroxidase, mitochondrial.

Mol	Chain	Residues	Atoms					ZeroOcc	AltConf	Trace
1	A	294	Total	C	N	O	S	0	0	0
			2370	1512	395	457	6			

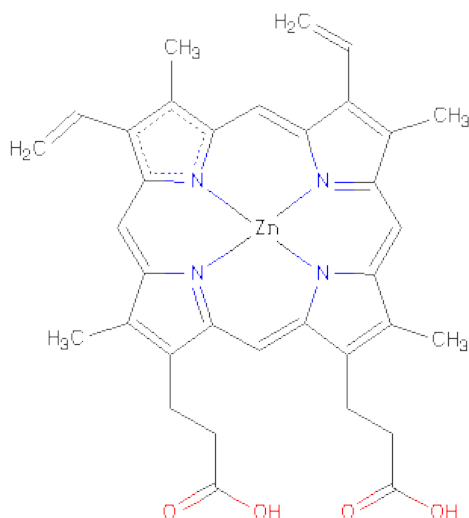
- Molecule 2 is a protein called Cytochrome c iso-1.

Mol	Chain	Residues	Atoms					ZeroOcc	AltConf	Trace
2	B	108	Total	C	N	O	S	0	0	0
			844	531	151	157	5			

There is a discrepancy between the modelled and reference sequences:

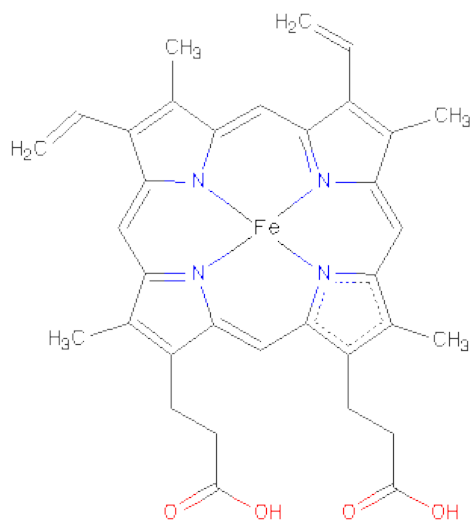
Chain	Residue	Modelled	Actual	Comment	Reference
B	82	ILE	PHE	ENGINEERED	UNP P00044

- Molecule 3 is PROTOPORPHYRIN IX CONTAINING ZN (three-letter code: ZNH) (formula: $C_{34}H_{32}N_4O_4Zn$).



Mol	Chain	Residues	Atoms					ZeroOcc	AltConf
3	A	1	Total	C	N	O	Zn	0	0
			43	34	4	4	1		

- Molecule 4 is PROTOPORPHYRIN IX CONTAINING FE (three-letter code: HEM) (formula: $C_{34}H_{32}FeN_4O_4$).



Mol	Chain	Residues	Atoms					ZeroOcc	AltConf
4	B	1	Total	C	Fe	N	O	0	0
			43	34	1	4	4		

- Molecule 5 is water.

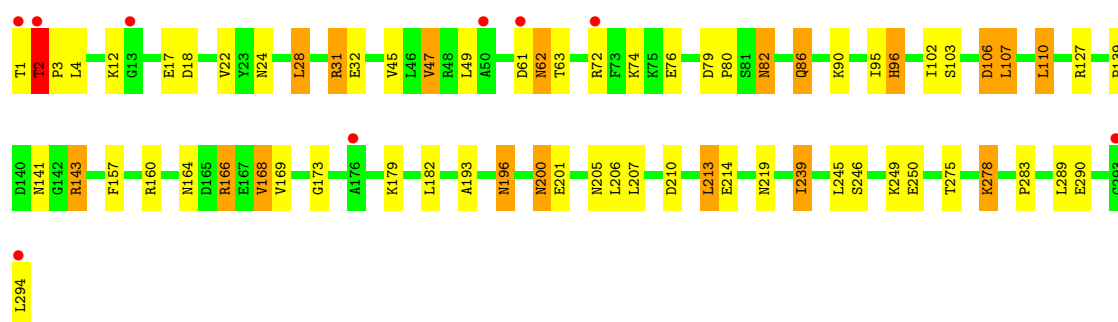
Mol	Chain	Residues	Atoms		ZeroOcc	AltConf
5	A	75	Total	O	0	0
			75	75		
5	B	32	Total	O	0	0
			32	32		

3 Residue-property plots

These plots are drawn for all protein, RNA and DNA chains in the entry. The first graphic for a chain summarises the proportions of errors displayed in the second graphic. The second graphic shows the sequence view annotated by issues in geometry and electron density. Residues are color-coded according to the number of geometric quality criteria for which they contain at least one outlier: green = 0, yellow = 1, orange = 2 and red = 3 or more. A red dot above a residue indicates a poor fit to the electron density ($RSRZ > 2$). Stretches of 2 or more consecutive residues without any outlier are shown as a green connector. Residues present in the sample, but not in the model, are shown in grey.

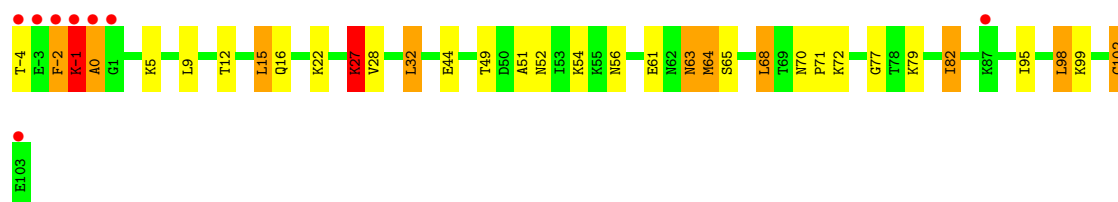
- Molecule 1: Cytochrome c peroxidase, mitochondrial

Chain A: 



- Molecule 2: Cytochrome c iso-1

Chain B: 



4 Data and refinement statistics

Property	Value	Source
Space group	P 21 21 21	Depositor
Cell constants a, b, c, α , β , γ	43.80Å 51.99Å 183.67Å 90.00° 90.00° 90.00°	Depositor
Resolution (Å)	20.00 – 2.70 28.15 – 2.70	Depositor EDS
% Data completeness (in resolution range)	100.0 (20.00-2.70) 98.9 (28.15-2.70)	Depositor EDS
R_{merge}	(Not available)	Depositor
R_{sym}	(Not available)	Depositor
$\langle I/\sigma(I) \rangle$ ¹	6.30 (at 2.72Å)	Xtriage
Refinement program	REFMAC 5.1.9999	Depositor
R, R_{free}	0.262 , 0.289 0.258 , 0.283	Depositor DCC
R_{free} test set	612 reflections (5.39%)	DCC
Wilson B-factor (Å ²)	58.7	Xtriage
Anisotropy	0.325	Xtriage
Bulk solvent k_{sol} (e/Å ³), B_{sol} (Å ²)	0.25 , 17.6	EDS
Estimated twinning fraction	No twinning to report.	Xtriage
L-test for twinning	$\langle L \rangle = 0.49$, $\langle L^2 \rangle = 0.32$	Xtriage
Outliers	0 of 11964 reflections	Xtriage
F_o, F_c correlation	0.92	EDS
Total number of atoms	3407	wwPDB-VP
Average B, all atoms (Å ²)	28.0	wwPDB-VP

Xtriage's analysis on translational NCS is as follows: *The largest off-origin peak in the Patterson function is 5.48% of the height of the origin peak. No significant pseudotranslation is detected.*

¹Intensities estimated from amplitudes.

5 Model quality ⓘ

5.1 Standard geometry ⓘ

Bond lengths and bond angles in the following residue types are not validated in this section: HEM, ZNH

The Z score for a bond length (or angle) is the number of standard deviations the observed value is removed from the expected value. A bond length (or angle) with $|Z| > 5$ is considered an outlier worth inspection. RMSZ is the root-mean-square of all Z scores of the bond lengths (or angles).

Mol	Chain	Bond lengths		Bond angles	
		RMSZ	$\# Z > 5$	RMSZ	$\# Z > 5$
1	A	0.79	0/2437	0.91	2/3301 (0.1%)
2	B	1.13	1/861 (0.1%)	1.02	3/1151 (0.3%)
All	All	0.89	1/3298 (0.0%)	0.94	5/4452 (0.1%)

All (1) bond length outliers are listed below:

Mol	Chain	Res	Type	Atoms	Z	Observed(Å)	Ideal(Å)
2	B	102	CYS	CB-SG	-23.76	1.41	1.82

All (5) bond angle outliers are listed below:

Mol	Chain	Res	Type	Atoms	Z	Observed(°)	Ideal(°)
2	B	15	LEU	CA-CB-CG	8.93	135.85	115.30
1	A	107	LEU	CA-CB-CG	5.89	128.86	115.30
2	B	27	LYS	CB-CA-C	5.88	122.16	110.40
2	B	-2	PHE	N-CA-C	-5.78	95.41	111.00
1	A	213	LEU	CA-CB-CG	5.26	127.40	115.30

There are no chirality outliers.

There are no planarity outliers.

5.2 Close contacts ⓘ

In the following table, the Non-H and H(model) columns list the number of non-hydrogen atoms and hydrogen atoms in the chain respectively. The H(added) column lists the number of hydrogens added by MolProbity. The Clashes column lists the number of clashes within the asymmetric unit, and the number in parentheses is this value normalized per 1000 atoms of the molecule in the chain. The Symm-Clashes column gives symmetry related clashes, in the same way as for the Clashes column.

Mol	Chain	Non-H	H(model)	H(added)	Clashes	Symm-Clashes
1	A	2370	0	2246	25	0
2	B	844	0	851	13	0
3	A	43	0	30	1	0
4	B	43	0	30	0	0
5	A	75	0	0	2	0
5	B	32	0	0	0	0
All	All	3407	0	3157	37	0

Clashscore is defined as the number of clashes calculated for the entry per 1000 atoms (including hydrogens) of the entry. The overall clashscore for this entry is 6.

All (37) close contacts within the same asymmetric unit are listed below.

Atom-1	Atom-2	Distance(Å)	Clash(Å)
1:A:173:GLY:N	5:A:566:HOH:O	2.09	0.82
1:A:79:ASP:HB3	1:A:82:ASN:HB2	1.68	0.76
1:A:31:ARG:HH12	1:A:294:LEU:HB3	1.50	0.75
2:B:98:LEU:HD22	2:B:102:CYS:SG	2.28	0.73
1:A:200:ASN:HD22	1:A:200:ASN:H	1.37	0.71
2:B:27:LYS:HG2	2:B:28:VAL:H	1.58	0.68
2:B:-1:LYS:HG3	2:B:0:ALA:H	1.68	0.59
1:A:206:LEU:HG	1:A:239:ILE:HD12	1.86	0.58
1:A:169:VAL:O	5:A:566:HOH:O	2.16	0.58
2:B:63:ASN:HD22	2:B:64:MET:N	2.02	0.57
1:A:164:ASN:O	1:A:168:VAL:HG13	2.04	0.56
2:B:98:LEU:O	2:B:102:CYS:SG	2.61	0.56
1:A:47:VAL:HG22	3:A:295:ZNH:HMD2	1.89	0.55
2:B:71:PRO:HG2	2:B:82:ILE:HG22	1.91	0.52
1:A:139:PRO:HB3	1:A:143:ARG:HE	1.76	0.51
1:A:127:ARG:HE	1:A:283:PRO:HD3	1.78	0.49
2:B:49:THR:HG22	2:B:51:ALA:H	1.76	0.49
1:A:200:ASN:N	1:A:200:ASN:HD22	2.07	0.47
2:B:98:LEU:HD22	2:B:102:CYS:HG	1.78	0.47
1:A:166:ARG:HH12	1:A:250:GLU:CD	2.18	0.47
1:A:1:THR:O	1:A:2:THR:O	2.32	0.47
2:B:68:LEU:CD1	2:B:95:ILE:HD11	2.45	0.47
2:B:5:LYS:O	2:B:9:LEU:HG	2.16	0.46
1:A:278:LYS:HA	1:A:278:LYS:HD2	1.80	0.46
1:A:18:ASP:O	1:A:22:VAL:HG23	2.17	0.45
2:B:63:ASN:HD22	2:B:63:ASN:C	2.20	0.45
1:A:86:GLN:HB2	1:A:86:GLN:HE21	1.71	0.44
1:A:127:ARG:HH21	1:A:283:PRO:HD3	1.82	0.44
1:A:63:THR:HG23	1:A:143:ARG:HH22	1.83	0.44
1:A:193:ALA:HB3	2:B:72:LYS:HB2	2.01	0.43

Continued on next page...

Continued from previous page...

Atom-1	Atom-2	Distance(Å)	Clash(Å)
1:A:196:ASN:H	1:A:196:ASN:ND2	2.16	0.43
1:A:24:ASN:O	1:A:28:LEU:HB2	2.18	0.42
1:A:157:PHE:O	1:A:160:ARG:HB2	2.20	0.42
1:A:106:ASP:O	1:A:110:LEU:HB2	2.20	0.41
2:B:49:THR:HG21	2:B:77:GLY:O	2.21	0.40
1:A:96:HIS:HE1	1:A:102:ILE:O	2.05	0.40
1:A:201:GLU:HG3	1:A:205:ASN:ND2	2.36	0.40

There are no symmetry-related clashes.

5.3 Torsion angles

5.3.1 Protein backbone ⓘ

In the following table, the Percentiles column shows the percent Ramachandran outliers of the chain as a percentile score with respect to all X-ray entries followed by that with respect to entries of similar resolution. The Analysed column shows the number of residues for which the backbone conformation was analysed, and the total number of residues.

Mol	Chain	Analysed	Favoured	Allowed	Outliers	Percentiles	
1	A	292/294 (99%)	273 (94%)	13 (4%)	6 (2%)	11	27
2	B	106/108 (98%)	96 (91%)	5 (5%)	5 (5%)	4	7
All	All	398/402 (99%)	369 (93%)	18 (4%)	11 (3%)	8	18

All (11) Ramachandran outliers are listed below:

Mol	Chain	Res	Type
1	A	2	THR
1	A	62	ASN
1	A	219	ASN
2	B	61	GLU
1	A	12	LYS
1	A	141	ASN
2	B	0	ALA
2	B	56	ASN
1	A	3	PRO
2	B	32	LEU
2	B	-1	LYS

5.3.2 Protein sidechains ⓘ

In the following table, the Percentiles column shows the percent sidechain outliers of the chain as a percentile score with respect to all X-ray entries followed by that with respect to entries of similar resolution. The Analysed column shows the number of residues for which the sidechain conformation was analysed, and the total number of residues.

Mol	Chain	Analysed	Rotameric	Outliers	Percentiles	
1	A	252/253 (100%)	209 (83%)	43 (17%)	3	8
2	B	89/89 (100%)	68 (76%)	21 (24%)	1	3
All	All	341/342 (100%)	277 (81%)	64 (19%)	2	6

All (64) residues with a non-rotameric sidechain are listed below:

Mol	Chain	Res	Type
1	A	2	THR
1	A	4	LEU
1	A	17	GLU
1	A	28	LEU
1	A	31	ARG
1	A	32	GLU
1	A	45	VAL
1	A	47	VAL
1	A	49	LEU
1	A	61	ASP
1	A	62	ASN
1	A	72	ARG
1	A	74	LYS
1	A	76	GLU
1	A	80	PRO
1	A	82	ASN
1	A	86	GLN
1	A	90	LYS
1	A	95	ILE
1	A	96	HIS
1	A	103	SER
1	A	106	ASP
1	A	107	LEU
1	A	110	LEU
1	A	143	ARG
1	A	166	ARG
1	A	168	VAL
1	A	179	LYS
1	A	182	LEU

Continued on next page...

Continued from previous page...

Mol	Chain	Res	Type
1	A	196	ASN
1	A	200	ASN
1	A	207	LEU
1	A	210	ASP
1	A	213	LEU
1	A	214	GLU
1	A	239	ILE
1	A	245	LEU
1	A	246	SER
1	A	249	LYS
1	A	275	THR
1	A	278	LYS
1	A	289	LEU
1	A	290	GLU
2	B	-4	THR
2	B	-2	PHE
2	B	-1	LYS
2	B	12	THR
2	B	15	LEU
2	B	16	GLN
2	B	22	LYS
2	B	27	LYS
2	B	32	LEU
2	B	44	GLU
2	B	52	ASN
2	B	54	LYS
2	B	63	ASN
2	B	64	MET
2	B	65	SER
2	B	68	LEU
2	B	70	ASN
2	B	79	LYS
2	B	82	ILE
2	B	98	LEU
2	B	99	LYS

Some sidechains can be flipped to improve hydrogen bonding and reduce clashes. All (9) such sidechains are listed below:

Mol	Chain	Res	Type
1	A	82	ASN
1	A	86	GLN
1	A	96	HIS

Continued on next page...

Continued from previous page...

Mol	Chain	Res	Type
1	A	196	ASN
1	A	200	ASN
1	A	272	ASN
2	B	62	ASN
2	B	63	ASN
2	B	70	ASN

5.3.3 RNA ⓘ

There are no RNA chains in this entry.

5.4 Non-standard residues in protein, DNA, RNA chains ⓘ

There are no non-standard protein/DNA/RNA residues in this entry.

5.5 Carbohydrates ⓘ

There are no carbohydrates in this entry.

5.6 Ligand geometry ⓘ

2 ligands are modelled in this entry.

In the following table, the Counts columns list the number of bonds (or angles) for which Mogul statistics could be retrieved, the number of bonds (or angles) that are observed in the model and the number of bonds (or angles) that are defined in the chemical component dictionary. The Link column lists molecule types, if any, to which the group is linked. The Z score for a bond length (or angle) is the number of standard deviations the observed value is removed from the expected value. A bond length (or angle) with $|Z| > 2$ is considered an outlier worth inspection. RMSZ is the root-mean-square of all Z scores of the bond lengths (or angles).

Mol	Type	Chain	Res	Link	Bond lengths			Bond angles		
					Counts	RMSZ	$\# Z > 2$	Counts	RMSZ	$\# Z > 2$
3	ZNH	A	295	1	50,50,50	1.67	9 (18%)	58,82,82	2.44	21 (36%)
4	HEM	B	109	2	49,50,50	2.17	11 (22%)	46,82,82	1.50	8 (17%)

In the following table, the Chirals column lists the number of chiral outliers, the number of chiral centers analysed, the number of these observed in the model and the number defined in the chemical component dictionary. Similar counts are reported in the Torsion and Rings columns. '-' means no outliers of that kind were identified.

Mol	Type	Chain	Res	Link	Chirals	Torsions	Rings
3	ZNH	A	295	1	-	0/10/54/54	0/0/8/8
4	HEM	B	109	2	-	0/14/114/114	0/0/8/8

All (20) bond length outliers are listed below:

Mol	Chain	Res	Type	Atoms	Z	Observed(Å)	Ideal(Å)
4	B	109	HEM	C2B-C1B	8.24	1.46	1.44
4	B	109	HEM	C2D-C1D	-7.22	1.42	1.44
3	A	295	ZNH	C4B-C3B	4.26	1.47	1.41
3	A	295	ZNH	C4A-NA	3.91	1.38	1.33
4	B	109	HEM	C3B-C2B	-3.85	1.37	1.43
3	A	295	ZNH	ZN-NA	3.85	2.08	2.00
3	A	295	ZNH	C1D-C2D	3.55	1.44	1.40
3	A	295	ZNH	C3C-CAC	-3.42	1.41	1.48
3	A	295	ZNH	C4C-C3C	3.15	1.45	1.41
3	A	295	ZNH	C3B-CAB	-2.95	1.42	1.48
4	B	109	HEM	C1C-NC	-2.86	1.34	1.38
4	B	109	HEM	C3D-C2D	-2.76	1.38	1.43
4	B	109	HEM	C1B-NB	-2.63	1.34	1.39
3	A	295	ZNH	C1C-NC	2.45	1.36	1.33
4	B	109	HEM	CMD-C2D	2.40	1.54	1.47
4	B	109	HEM	CMB-C2B	2.28	1.54	1.47
4	B	109	HEM	C3D-C4D	2.26	1.45	1.44
4	B	109	HEM	CMC-C2C	2.21	1.54	1.47
3	A	295	ZNH	C1A-NA	2.16	1.36	1.33
4	B	109	HEM	C4D-ND	-2.02	1.35	1.39

All (29) bond angle outliers are listed below:

Mol	Chain	Res	Type	Atoms	Z	Observed(°)	Ideal(°)
3	A	295	ZNH	C3D-C4D-ND	5.91	113.44	109.50
3	A	295	ZNH	C4B-C3B-C2B	-5.62	102.94	106.87
3	A	295	ZNH	C4D-C3D-C2D	-5.27	102.53	106.69
3	A	295	ZNH	CMC-C2C-C3C	5.13	133.05	124.97
3	A	295	ZNH	CMC-C2C-C1C	-4.78	121.27	128.62
3	A	295	ZNH	C3A-C4A-NA	4.65	112.92	109.41
3	A	295	ZNH	C2D-C1D-ND	4.05	112.47	109.41
4	B	109	HEM	CHC-C4B-NB	-3.92	121.33	124.58
4	B	109	HEM	CBD-CAD-C3D	-3.70	106.29	114.37
3	A	295	ZNH	C4A-C3A-C2A	-3.42	104.61	107.00
4	B	109	HEM	CMA-C3A-C4A	-3.42	123.36	128.62
3	A	295	ZNH	C2C-C1C-NC	3.39	111.97	109.41
3	A	295	ZNH	C3B-CAB-CBB	3.37	132.93	125.95

Continued on next page...

Continued from previous page...

Mol	Chain	Res	Type	Atoms	Z	Observed(°)	Ideal(°)
3	A	295	ZNH	C2B-C1B-NB	3.28	111.89	109.41
3	A	295	ZNH	CBA-CAA-C2A	3.14	118.23	112.69
3	A	295	ZNH	CMB-C2B-C3B	3.13	129.90	124.97
4	B	109	HEM	C4A-C3A-C2A	2.95	109.05	107.00
3	A	295	ZNH	C4D-ND-C1D	-2.90	103.52	106.96
4	B	109	HEM	CHD-C4C-NC	-2.85	122.25	124.73
3	A	295	ZNH	C2C-C3C-CAC	2.63	132.71	127.33
3	A	295	ZNH	C3C-CAC-CBC	2.63	131.40	125.95
3	A	295	ZNH	C2B-C3B-CAB	2.57	132.59	127.33
4	B	109	HEM	C3B-C4B-NB	-2.50	112.21	114.00
3	A	295	ZNH	C3C-C2C-C1C	-2.48	105.55	107.00
3	A	295	ZNH	C4A-NA-C1A	-2.48	103.72	106.91
3	A	295	ZNH	CMD-C2D-C1D	-2.20	125.24	128.62
4	B	109	HEM	C1A-C2A-C3A	-2.11	104.74	106.92
4	B	109	HEM	CMD-C2D-C3D	2.03	130.19	125.60
3	A	295	ZNH	C4C-C3C-C2C	-2.02	105.46	106.87

There are no chirality outliers.

There are no torsion outliers.

There are no ring outliers.

5.7 Other polymers ⓘ

There are no such residues in this entry.

5.8 Polymer linkage issues

There are no chain breaks in this entry.

6 Fit of model and data ⓘ

6.1 Protein, DNA and RNA chains ⓘ

In the following table, the column labelled ‘#RSRZ> 2’ contains the number (and percentage) of RSRZ outliers, followed by percent RSRZ outliers for the chain as percentile scores relative to all X-ray entries and entries of similar resolution. The OWAB column contains the minimum, median, 95th percentile and maximum values of the occupancy-weighted average B-factor per residue. The column labelled ‘Q< 0.9’ lists the number of (and percentage) of residues with an average occupancy less than 0.9.

Mol	Chain	Analysed	<RSRZ>	#RSRZ>2	OWAB(Å ²)	Q<0.9
1	A	294/294 (100%)	0.29	9 (3%) 47 52	11, 27, 44, 54	0
2	B	108/108 (100%)	0.68	8 (7%) 14 15	12, 28, 43, 76	0
All	All	402/402 (100%)	0.39	17 (4%) 35 39	11, 27, 44, 76	0

All (17) RSRZ outliers are listed below:

Mol	Chain	Res	Type	RSRZ
2	B	-4	THR	8.8
2	B	0	ALA	6.3
2	B	-1	LYS	5.7
2	B	-2	PHE	5.2
1	A	72	ARG	4.2
2	B	-3	GLU	4.0
1	A	61	ASP	3.3
2	B	1	GLY	3.2
1	A	2	THR	3.0
1	A	294	LEU	2.8
1	A	13	GLY	2.7
2	B	87	LYS	2.5
1	A	293	GLY	2.5
1	A	50	ALA	2.5
1	A	176	ALA	2.3
1	A	1	THR	2.1
2	B	103	GLU	2.0

6.2 Non-standard residues in protein, DNA, RNA chains ⓘ

There are no non-standard protein/DNA/RNA residues in this entry.

6.3 Carbohydrates

There are no carbohydrates in this entry.

6.4 Ligands

In the following table, the Atoms column lists the number of modelled atoms in the group and the number defined in the chemical component dictionary. LLDF column lists the quality of electron density of the group with respect to its neighbouring residues in protein, DNA or RNA chains. The B-factors column lists the minimum, median, 95th percentile and maximum values of B factors of atoms in the group. The column labelled 'Q< 0.9' lists the number of atoms with occupancy less than 0.9.

Mol	Type	Chain	Res	Atoms	RSR	LLDF	B-factors(\AA^2)	Q<0.9
3	ZNH	A	295	43/43	0.21	-0.15	2,20,29,34	0
4	HEM	B	109	43/43	0.15	-0.76	11,22,28,33	0

6.5 Other polymers

There are no such residues in this entry.