



# Full wwPDB X-ray Structure Validation Report

Feb 28, 2014 – 12:24 AM GMT

PDB ID : 3B0R  
Title : Human PPAR gamma ligand binding dmain complexed with GW9662 in a covalent bonded form  
Authors : Tomioka, D.; Hashimoto, H.; Sato, M.; Shimizu, T.  
Deposited on : 2011-06-13  
Resolution : 2.15 Å(reported)

This is a full wwPDB validation report for a publicly released PDB entry.  
We welcome your comments at [validation@mail.wwpdb.org](mailto:validation@mail.wwpdb.org)  
A user guide is available at <http://wwpdb.org/ValidationPDFNotes.html>

---

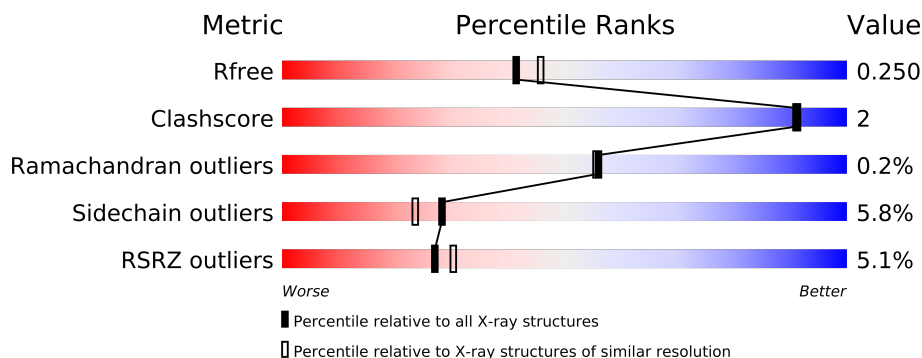
The following versions of software and data (see [references](#)) were used in the production of this report:

MolProbity : 4.02b-467  
Mogul : 1.15 2013  
Xtriage (Phenix) : dev-1323  
EDS : stable22639  
Percentile statistics : 21963  
Refmac : 5.8.0049  
CCP4 : 6.3.0 (Settle)  
Ideal geometry (proteins) : Engh & Huber (2001)  
Ideal geometry (DNA, RNA) : Parkinson et. al. (1996)  
Validation Pipeline (wwPDB-VP) : stable22683

# 1 Overall quality at a glance

The reported resolution of this entry is 2.15 Å.

Percentile scores (ranging between 0-100) for global validation metrics of the entry are shown in the following graphic. The table shows the number of entries on which the scores are based.



Metric	Whole archive (#Entries)	Similar resolution (#Entries, resolution range(Å))
$R_{free}$	66092	1094 (2.18-2.14)
Clashscore	79885	1299 (2.18-2.14)
Ramachandran outliers	78287	1272 (2.18-2.14)
Sidechain outliers	78261	1272 (2.18-2.14)
RSRZ outliers	66119	1094 (2.18-2.14)

The table below summarises the geometric issues observed across the polymeric chains and their fit to the electron density. The red, orange, yellow and green segments on the lower bar indicate the fraction of residues that contain outliers for  $\geq 3$ , 2, 1 and 0 types of geometric quality criteria. The upper red bar (where present) indicates the fraction of residues that have poor fit to the electron density.

Mol	Chain	Length	Quality of chain
1	A	274	
1	B	274	

## 2 Entry composition i

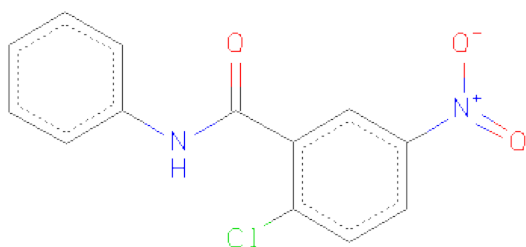
There are 3 unique types of molecules in this entry. The entry contains 4147 atoms, of which 0 are hydrogen and 0 are deuterium.

In the tables below, the ZeroOcc column contains the number of atoms modelled with zero occupancy, the AltConf column contains the number of residues with at least one atom in alternate conformation and the Trace column contains the number of residues modelled with at most 2 atoms.

- Molecule 1 is a protein called Peroxisome proliferator-activatedreceptor gamma.

Mol	Chain	Residues	Atoms					ZeroOcc	AltConf	Trace
1	A	262	Total	C	N	O	S	0	0	0
			2087	1343	341	393	10			
1	B	245	Total	C	N	O	S	0	0	0
			1962	1270	321	362	9			

- Molecule 2 is 2-CHLORO-5-NITRO-N-PHENYLBENZAMIDE (three-letter code: GW9) (formula: C<sub>13</sub>H<sub>9</sub>ClN<sub>2</sub>O<sub>3</sub>).



Mol	Chain	Residues	Atoms				ZeroOcc	AltConf
2	A	1	Total	C	N	O	0	0
			18	13	2	3		
2	B	1	Total	C	N	O	0	0
			18	13	2	3		

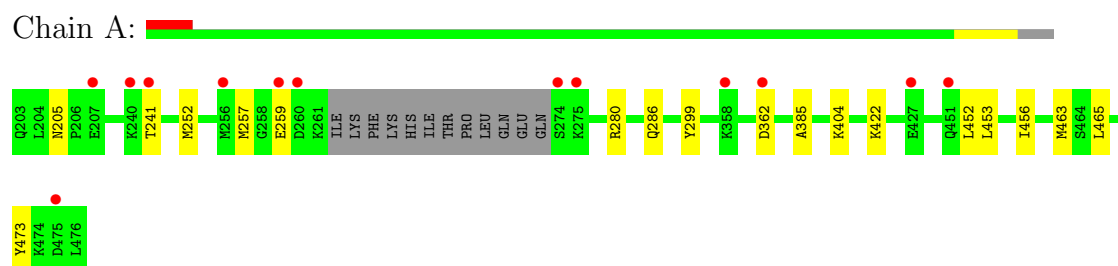
- Molecule 3 is water.

Mol	Chain	Residues	Atoms		ZeroOcc	AltConf
3	A	36	Total 36	O 36	0	0
3	B	26	Total 26	O 26	0	0

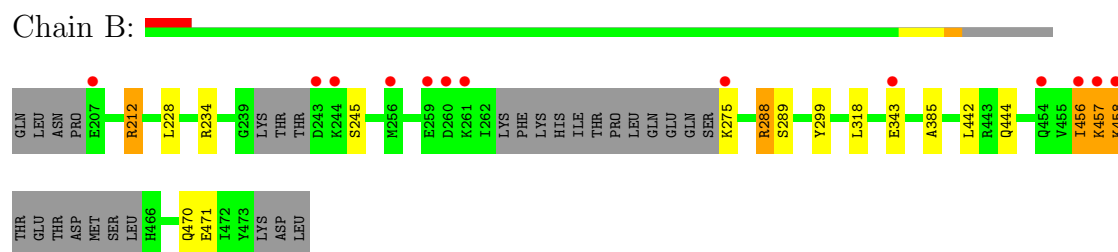
### 3 Residue-property plots

These plots are drawn for all protein, RNA and DNA chains in the entry. The first graphic for a chain summarises the proportions of errors displayed in the second graphic. The second graphic shows the sequence view annotated by issues in geometry and electron density. Residues are color-coded according to the number of geometric quality criteria for which they contain at least one outlier: green = 0, yellow = 1, orange = 2 and red = 3 or more. A red dot above a residue indicates a poor fit to the electron density ( $RSRZ > 2$ ). Stretches of 2 or more consecutive residues without any outlier are shown as a green connector. Residues present in the sample, but not in the model, are shown in grey.

- Molecule 1: Peroxisome proliferator-activatedreceptor gamma



- Molecule 1: Peroxisome proliferator-activatedreceptor gamma



## 4 Data and refinement statistics

Property	Value	Source
Space group	C 1 2 1	Depositor
Cell constants a, b, c, $\alpha$ , $\beta$ , $\gamma$	92.70Å 59.80Å 117.25Å 90.00° 103.60° 90.00°	Depositor
Resolution (Å)	19.69 – 2.15 19.51 – 2.15	Depositor EDS
% Data completeness (in resolution range)	94.3 (19.69-2.15) 94.5 (19.51-2.15)	Depositor EDS
$R_{merge}$	0.04	Depositor
$R_{sym}$	(Not available)	Depositor
$\langle I/\sigma(I) \rangle$ <sup>1</sup>	8.75 (at 2.15Å)	Xtriage
Refinement program	REFMAC 5.6.0113	Depositor
R, $R_{free}$	0.207 , 0.249 0.214 , 0.250	Depositor DCC
$R_{free}$ test set	1631 reflections (5.33%)	DCC
Wilson B-factor (Å <sup>2</sup> )	30.3	Xtriage
Anisotropy	0.062	Xtriage
Bulk solvent $k_{sol}$ (e/Å <sup>3</sup> ), $B_{sol}$ (Å <sup>2</sup> )	0.39 , 46.7	EDS
Estimated twinning fraction	No twinning to report.	Xtriage
L-test for twinning	$\langle  L  \rangle = 0.49$ , $\langle L^2 \rangle = 0.32$	Xtriage
Outliers	1 of 32237 reflections (0.003%)	Xtriage
$F_o, F_c$ correlation	0.93	EDS
Total number of atoms	4147	wwPDB-VP
Average B, all atoms (Å <sup>2</sup> )	47.0	wwPDB-VP

Xtriage's analysis on translational NCS is as follows: *The largest off-origin peak in the Patterson function is 6.01% of the height of the origin peak. No significant pseudotranslation is detected.*

<sup>1</sup>Intensities estimated from amplitudes.

## 5 Model quality

### 5.1 Standard geometry

Bond lengths and bond angles in the following residue types are not validated in this section: GW9

The Z score for a bond length (or angle) is the number of standard deviations the observed value is removed from the expected value. A bond length (or angle) with  $|Z| > 5$  is considered an outlier worth inspection. RMSZ is the root-mean-square of all Z scores of the bond lengths (or angles).

Mol	Chain	Bond lengths		Bond angles	
		RMSZ	$\# Z  > 5$	RMSZ	$\# Z  > 5$
1	A	0.42	0/2121	0.54	0/2857
1	B	0.41	0/1993	0.51	0/2681
All	All	0.42	0/4114	0.52	0/5538

Chiral center outliers are detected by calculating the chiral volume of a chiral center and verifying if the center is modelled as a planar moiety or with the opposite hand. A planarity outlier is detected by checking planarity of atoms in a peptide group, atoms in a mainchain group or atoms of a sidechain that are expected to be planar.

Mol	Chain	#Chirality outliers	#Planarity outliers
1	A	0	1

There are no bond length outliers.

There are no bond angle outliers.

There are no chirality outliers.

All (1) planarity outliers are listed below:

Mol	Chain	Res	Type	Group
1	A	241	THR	Peptide

### 5.2 Close contacts

In the following table, the Non-H and H(model) columns list the number of non-hydrogen atoms and hydrogen atoms in the chain respectively. The H(added) column lists the number of hydrogens added by MolProbity. The Clashes column lists the number of clashes within the asymmetric unit, and the number in parentheses is this value normalized per 1000 atoms of the molecule in the chain. The Symm-Clashes column gives symmetry related clashes, in the same way as for the Clashes column.

Mol	Chain	Non-H	H(model)	H(added)	Clashes	Symm-Clashes
1	A	2087	0	0	4	0
1	B	1962	0	0	4	0
2	A	18	0	9	1	0
2	B	18	0	9	0	0
3	A	36	0	0	0	0
3	B	26	0	0	2	0
All	All	4147	0	18	8	0

Clashscore is defined as the number of clashes calculated for the entry per 1000 atoms (including hydrogens) of the entry. The overall clashscore for this entry is 2.

All (8) close contacts within the same asymmetric unit are listed below.

Atom-1	Atom-2	Distance(Å)	Clash(Å)
1:B:456:ILE:O	1:B:458:LYS:N	2.42	0.52
1:A:456:ILE:CG2	1:A:463:MET:CE	2.89	0.51
1:A:473:TYR:OH	2:A:1:GW9:O2	2.28	0.50
1:A:259:GLU:OE2	1:A:280:ARG:NH1	2.46	0.49
1:B:288:ARG:NH1	3:B:38:HOH:O	2.46	0.48
1:B:212:ARG:NH2	3:B:6:HOH:O	2.51	0.44
1:A:299:TYR:OH	1:A:385:ALA:O	2.36	0.43
1:B:299:TYR:OH	1:B:385:ALA:O	2.37	0.42

There are no symmetry-related clashes.

## 5.3 Torsion angles

### 5.3.1 Protein backbone ⓘ

In the following table, the Percentiles column shows the percent Ramachandran outliers of the chain as a percentile score with respect to all X-ray entries followed by that with respect to entries of similar resolution. The Analysed column shows the number of residues for which the backbone conformation was analysed, and the total number of residues.

Mol	Chain	Analysed	Favoured	Allowed	Outliers	Percentiles	
1	A	258/274 (94%)	256 (99%)	2 (1%)	0	100	100
1	B	237/274 (86%)	233 (98%)	3 (1%)	1 (0%)	43	39
All	All	495/548 (90%)	489 (99%)	5 (1%)	1 (0%)	56	55

All (1) Ramachandran outliers are listed below:



Mol	Chain	Res	Type
1	B	457	LYS

### 5.3.2 Protein sidechains ⓘ

In the following table, the Percentiles column shows the percent sidechain outliers of the chain as a percentile score with respect to all X-ray entries followed by that with respect to entries of similar resolution. The Analysed column shows the number of residues for which the sidechain conformation was analysed, and the total number of residues.

Mol	Chain	Analysed	Rotameric	Outliers	Percentiles	
1	A	233/247 (94%)	223 (96%)	10 (4%)	40	38
1	B	218/247 (88%)	202 (93%)	16 (7%)	20	15
All	All	451/494 (91%)	425 (94%)	26 (6%)	28	23

All (26) residues with a non-rotameric sidechain are listed below:

Mol	Chain	Res	Type
1	A	205	ASN
1	A	252	MET
1	A	257	MET
1	A	286	GLN
1	A	362	ASP
1	A	404	LYS
1	A	422	LYS
1	A	452	LEU
1	A	453	LEU
1	A	465	LEU
1	B	212	ARG
1	B	228	LEU
1	B	234	ARG
1	B	245	SER
1	B	275	LYS
1	B	288	ARG
1	B	289	SER
1	B	318	LEU
1	B	343	GLU
1	B	442	LEU
1	B	444	GLN
1	B	456	ILE
1	B	457	LYS
1	B	458	LYS
1	B	470	GLN

*Continued on next page...*

*Continued from previous page...*

Mol	Chain	Res	Type
1	B	471	GLU

Some sidechains can be flipped to improve hydrogen bonding and reduce clashes. There are no such sidechains identified.

### 5.3.3 RNA ⓘ

There are no RNA chains in this entry.

## 5.4 Non-standard residues in protein, DNA, RNA chains ⓘ

There are no non-standard protein/DNA/RNA residues in this entry.

## 5.5 Carbohydrates ⓘ

There are no carbohydrates in this entry.

## 5.6 Ligand geometry ⓘ

2 ligands are modelled in this entry.

In the following table, the Counts columns list the number of bonds (or angles) for which Mogul statistics could be retrieved, the number of bonds (or angles) that are observed in the model and the number of bonds (or angles) that are defined in the chemical component dictionary. The Link column lists molecule types, if any, to which the group is linked. The Z score for a bond length (or angle) is the number of standard deviations the observed value is removed from the expected value. A bond length (or angle) with  $|Z| > 2$  is considered an outlier worth inspection. RMSZ is the root-mean-square of all Z scores of the bond lengths (or angles).

Mol	Type	Chain	Res	Link	Bond lengths			Bond angles		
					Counts	RMSZ	$\# Z  > 2$	Counts	RMSZ	$\# Z  > 2$
2	GW9	A	1	1	19,19,20	1.08	1 (5%)	24,25,27	1.41	4 (16%)
2	GW9	B	1	1	19,19,20	1.03	1 (5%)	24,25,27	1.62	5 (20%)

In the following table, the Chirals column lists the number of chiral outliers, the number of chiral centers analysed, the number of these observed in the model and the number defined in the chemical component dictionary. Similar counts are reported in the Torsion and Rings columns. '-' means no outliers of that kind were identified.

Mol	Type	Chain	Res	Link	Chirals	Torsions	Rings
2	GW9	A	1	1	-	0/12/12/12	0/2/2/2
2	GW9	B	1	1	-	0/12/12/12	0/2/2/2

All (2) bond length outliers are listed below:

Mol	Chain	Res	Type	Atoms	Z	Observed(Å)	Ideal(Å)
2	A	1	GW9	C12-N2	-3.79	1.40	1.46
2	B	1	GW9	C12-N2	-3.76	1.40	1.46

All (9) bond angle outliers are listed below:

Mol	Chain	Res	Type	Atoms	Z	Observed(°)	Ideal(°)
2	B	1	GW9	C2-N1-C1	-4.32	116.46	126.67
2	A	1	GW9	O3-N2-C12	3.46	121.07	114.42
2	B	1	GW9	C13-C8-C9	3.46	119.82	117.23
2	B	1	GW9	C10-C9-C8	-3.14	119.61	122.51
2	A	1	GW9	C2-N1-C1	-3.13	119.28	126.67
2	A	1	GW9	C13-C8-C9	3.08	119.54	117.23
2	B	1	GW9	O3-N2-C12	2.92	120.04	114.42
2	B	1	GW9	C11-C12-N2	2.92	121.67	118.96
2	A	1	GW9	C10-C9-C8	-2.39	120.31	122.51

There are no chirality outliers.

There are no torsion outliers.

There are no ring outliers.

## 5.7 Other polymers ⓘ

There are no such residues in this entry.

## 5.8 Polymer linkage issues

There are no chain breaks in this entry.

## 6 Fit of model and data ⓘ

### 6.1 Protein, DNA and RNA chains ⓘ

In the following table, the column labelled ‘#RSRZ> 2’ contains the number (and percentage) of RSRZ outliers, followed by percent RSRZ outliers for the chain as percentile scores relative to all X-ray entries and entries of similar resolution. The OWAB column contains the minimum, median, 95<sup>th</sup> percentile and maximum values of the occupancy-weighted average B-factor per residue. The column labelled ‘Q< 0.9’ lists the number of (and percentage) of residues with an average occupancy less than 0.9.

Mol	Chain	Analysed	<RSRZ>	#RSRZ>2	OWAB(Å <sup>2</sup> )	Q<0.9
1	A	262/274 (95%)	0.21	13 (4%) 28 31	30, 43, 71, 103	0
1	B	245/274 (89%)	0.27	13 (5%) 25 28	30, 44, 82, 106	0
All	All	507/548 (92%)	0.24	26 (5%) 27 30	30, 44, 75, 106	0

All (26) RSRZ outliers are listed below:

Mol	Chain	Res	Type	RSRZ
1	B	243	ASP	5.6
1	B	207	GLU	4.9
1	A	241	THR	4.7
1	B	260	ASP	4.4
1	B	458	LYS	4.0
1	A	240	LYS	3.6
1	B	259	GLU	3.4
1	A	274	SER	3.3
1	B	275	LYS	3.2
1	B	256	MET	2.7
1	A	259	GLU	2.7
1	A	275	LYS	2.7
1	A	427	GLU	2.6
1	B	261	LYS	2.5
1	B	457	LYS	2.5
1	B	454	GLN	2.5
1	A	362	ASP	2.4
1	A	358	LYS	2.4
1	A	260	ASP	2.3
1	A	451	GLN	2.3
1	B	456	ILE	2.2
1	A	475	ASP	2.1
1	B	343	GLU	2.1
1	A	207	GLU	2.1

*Continued on next page...*

*Continued from previous page...*

Mol	Chain	Res	Type	RSRZ
1	B	244	LYS	2.1
1	A	256	MET	2.0

## 6.2 Non-standard residues in protein, DNA, RNA chains ⓘ

There are no non-standard protein/DNA/RNA residues in this entry.

## 6.3 Carbohydrates ⓘ

There are no carbohydrates in this entry.

## 6.4 Ligands ⓘ

In the following table, the Atoms column lists the number of modelled atoms in the group and the number defined in the chemical component dictionary. LLDF column lists the quality of electron density of the group with respect to its neighbouring residues in protein, DNA or RNA chains. The B-factors column lists the minimum, median, 95<sup>th</sup> percentile and maximum values of B factors of atoms in the group. The column labelled 'Q< 0.9' lists the number of atoms with occupancy less than 0.9.

Mol	Type	Chain	Res	Atoms	RSR	LLDF	B-factors(Å <sup>2</sup> )	Q<0.9
2	GW9	A	1	18/19	0.17	0.74	55,57,67,69	0
2	GW9	B	1	18/19	0.12	0.02	46,50,57,58	0

## 6.5 Other polymers ⓘ

There are no such residues in this entry.