



# Full wwPDB X-ray Structure Validation Report ⓘ

Feb 27, 2014 – 07:44 AM GMT

PDB ID : 3B0Y  
Title : K263D mutant of PolX from *Thermus thermophilus* HB8 complexed with Ca-dGTP  
Authors : Nakane, S.; Nakagawa, N.; Masui, R.; Kuramitsu, S.; RIKEN Structural Genomics/Proteomics Initiative (RSGI)  
Deposited on : 2011-06-17  
Resolution : 1.45 Å(reported)

This is a full wwPDB validation report for a publicly released PDB entry.  
We welcome your comments at [validation@mail.wwpdb.org](mailto:validation@mail.wwpdb.org)  
A user guide is available at <http://wwpdb.org/ValidationPDFNotes.html>

---

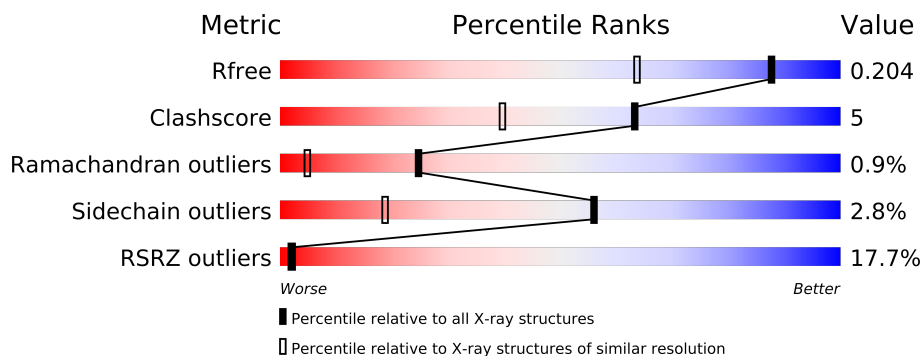
The following versions of software and data (see [references](#)) were used in the production of this report:

MolProbity : 4.02b-467  
Mogul : 1.15 2013  
Xtriage (Phenix) : dev-1323  
EDS : stable22639  
Percentile statistics : 21963  
Refmac : 5.8.0049  
CCP4 : 6.3.0 (Settle)  
Ideal geometry (proteins) : Engh & Huber (2001)  
Ideal geometry (DNA, RNA) : Parkinson et. al. (1996)  
Validation Pipeline (wwPDB-VP) : stable22683

# 1 Overall quality at a glance

The reported resolution of this entry is 1.45 Å.

Percentile scores (ranging between 0-100) for global validation metrics of the entry are shown in the following graphic. The table shows the number of entries on which the scores are based.



Metric	Whole archive (#Entries)	Similar resolution (#Entries, resolution range(Å))
$R_{free}$	66092	2476 (1.50-1.42)
Clashscore	79885	2834 (1.50-1.42)
Ramachandran outliers	78287	2769 (1.50-1.42)
Sidechain outliers	78261	2767 (1.50-1.42)
RSRZ outliers	66119	2477 (1.50-1.42)

The table below summarises the geometric issues observed across the polymeric chains and their fit to the electron density. The red, orange, yellow and green segments on the lower bar indicate the fraction of residues that contain outliers for  $\geq 3$ , 2, 1 and 0 types of geometric quality criteria. The upper red bar (where present) indicates the fraction of residues that have poor fit to the electron density.

Mol	Chain	Length	Quality of chain
1	A	575	

The following table lists non-polymeric compounds that are outliers for geometric or electron-density-fit criteria:

Mol	Type	Chain	Res	Geometry	Electron density
3	ZN	A	577	-	X

## 2 Entry composition i

There are 6 unique types of molecules in this entry. The entry contains 5097 atoms, of which 0 are hydrogen and 0 are deuterium.

In the tables below, the ZeroOcc column contains the number of atoms modelled with zero occupancy, the AltConf column contains the number of residues with at least one atom in alternate conformation and the Trace column contains the number of residues modelled with at most 2 atoms.

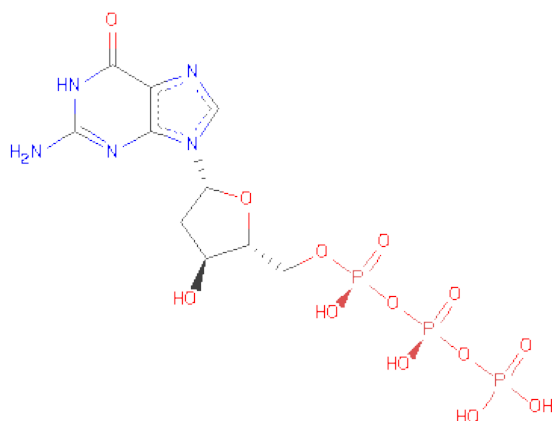
- Molecule 1 is a protein called DNA polymerase beta family (X family).

Mol	Chain	Residues	Atoms					ZeroOcc	AltConf	Trace
			Total	C	N	O	S			
1	A	575	4539	2876	813	840	10	0	4	0

There is a discrepancy between the modelled and reference sequences:

Chain	Residue	Modelled	Actual	Comment	Reference
A	263	ASP	LYS	ENGINEERED MUTATION	UNP Q5SJ64

- Molecule 2 is 2'-DEOXYGUANOSINE-5'-TRIPHOSPHATE (three-letter code: DGT) (formula: C<sub>10</sub>H<sub>16</sub>N<sub>5</sub>O<sub>13</sub>P<sub>3</sub>).



Mol	Chain	Residues	Atoms					ZeroOcc	AltConf
			Total	C	N	O	P		
2	A	1	31	10	5	13	3	0	0

- Molecule 3 is ZINC ION (three-letter code: ZN) (formula: Zn).

Mol	Chain	Residues	Atoms		ZeroOcc	AltConf
3	A	1	Total	Zn	0	0
			1	1		

- Molecule 4 is CALCIUM ION (three-letter code: CA) (formula: Ca).

Mol	Chain	Residues	Atoms		ZeroOcc	AltConf
4	A	4	Total	Ca	0	0
			4	4		

- Molecule 5 is CHLORIDE ION (three-letter code: CL) (formula: Cl).

Mol	Chain	Residues	Atoms		ZeroOcc	AltConf
5	A	1	Total	Cl	0	0
			1	1		

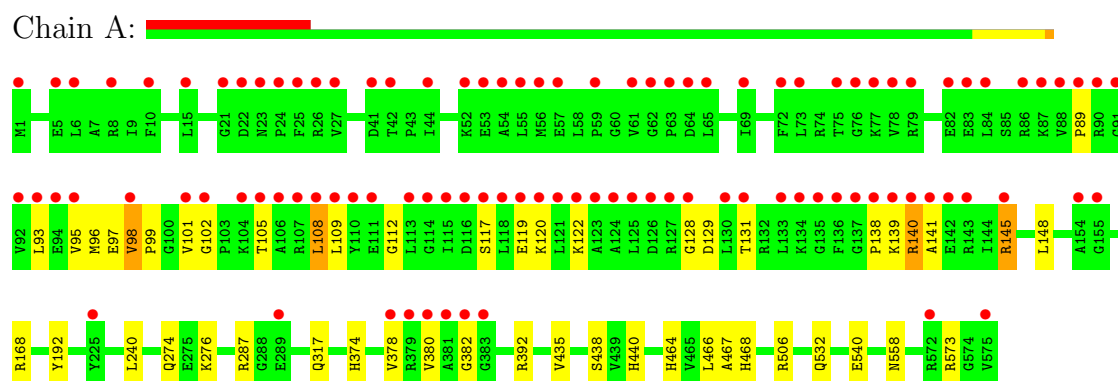
- Molecule 6 is water.

Mol	Chain	Residues	Atoms		ZeroOcc	AltConf
6	A	521	Total	O	0	0
			521	521		

### 3 Residue-property plots

These plots are drawn for all protein, RNA and DNA chains in the entry. The first graphic for a chain summarises the proportions of errors displayed in the second graphic. The second graphic shows the sequence view annotated by issues in geometry and electron density. Residues are color-coded according to the number of geometric quality criteria for which they contain at least one outlier: green = 0, yellow = 1, orange = 2 and red = 3 or more. A red dot above a residue indicates a poor fit to the electron density ( $\text{RSRZ} > 2$ ). Stretches of 2 or more consecutive residues without any outlier are shown as a green connector. Residues present in the sample, but not in the model, are shown in grey.

- Molecule 1: DNA polymerase beta family (X family)



## 4 Data and refinement statistics

Property	Value	Source
Space group	P 1 21 1	Depositor
Cell constants a, b, c, $\alpha$ , $\beta$ , $\gamma$	68.94Å 53.22Å 84.86Å 90.00° 107.65° 90.00°	Depositor
Resolution (Å)	50.00 – 1.45 17.30 – 1.45	Depositor EDS
% Data completeness (in resolution range)	99.5 (50.00-1.45) 99.6 (17.30-1.45)	Depositor EDS
$R_{merge}$	0.04	Depositor
$R_{sym}$	0.04	Depositor
$\langle I/\sigma(I) \rangle$ <sup>1</sup>	3.26 (at 1.45Å)	Xtriage
Refinement program	REFMAC 5.5.0110	Depositor
R, $R_{free}$	0.175 , 0.205 0.175 , 0.204	Depositor DCC
$R_{free}$ test set	5167 reflections (5.26%)	DCC
Wilson B-factor (Å <sup>2</sup> )	13.5	Xtriage
Anisotropy	0.124	Xtriage
Bulk solvent $k_{sol}$ (e/Å <sup>3</sup> ), $B_{sol}$ (Å <sup>2</sup> )	0.44 , 45.6	EDS
Estimated twinning fraction	No twinning to report.	Xtriage
L-test for twinning	$\langle  L  \rangle = 0.50$ , $\langle L^2 \rangle = 0.33$	Xtriage
Outliers	0 of 103603 reflections	Xtriage
$F_o, F_c$ correlation	0.96	EDS
Total number of atoms	5097	wwPDB-VP
Average B, all atoms (Å <sup>2</sup> )	21.0	wwPDB-VP

Xtriage's analysis on translational NCS is as follows: *The largest off-origin peak in the Patterson function is 5.40% of the height of the origin peak. No significant pseudotranslation is detected.*

<sup>1</sup>Intensities estimated from amplitudes.

## 5 Model quality

### 5.1 Standard geometry

Bond lengths and bond angles in the following residue types are not validated in this section: ZN, CA, DGT, CL

The Z score for a bond length (or angle) is the number of standard deviations the observed value is removed from the expected value. A bond length (or angle) with  $|Z| > 5$  is considered an outlier worth inspection. RMSZ is the root-mean-square of all Z scores of the bond lengths (or angles).

Mol	Chain	Bond lengths		Bond angles	
		RMSZ	$\# Z  > 5$	RMSZ	$\# Z  > 5$
1	A	0.58	0/4640	0.76	3/6273 (0.0%)

There are no bond length outliers.

All (3) bond angle outliers are listed below:

Mol	Chain	Res	Type	Atoms	Z	Observed(°)	Ideal(°)
1	A	287	ARG	NE-CZ-NH2	-5.55	117.53	120.30
1	A	506	ARG	NE-CZ-NH2	-5.26	117.67	120.30
1	A	240	LEU	CA-CB-CG	5.08	126.98	115.30

There are no chirality outliers.

There are no planarity outliers.

### 5.2 Close contacts

In the following table, the Non-H and H(model) columns list the number of non-hydrogen atoms and hydrogen atoms in the chain respectively. The H(added) column lists the number of hydrogens added by MolProbity. The Clashes column lists the number of clashes within the asymmetric unit, and the number in parentheses is this value normalized per 1000 atoms of the molecule in the chain. The Symm-Clashes column gives symmetry related clashes, in the same way as for the Clashes column.

Mol	Chain	Non-H	H(model)	H(added)	Clashes	Symm-Clashes
1	A	4539	0	0	25	0
2	A	31	0	0	0	0
3	A	1	0	0	0	0
4	A	4	0	0	0	0
5	A	1	0	0	0	0
6	A	521	0	0	9	0

*Continued on next page...*

*Continued from previous page...*

Mol	Chain	Non-H	H(model)	H(added)	Clashes	Symm-Clashes
All	All	5097	0	0	25	0

Clashscore is defined as the number of clashes calculated for the entry per 1000 atoms (including hydrogens) of the entry. The overall clashscore for this entry is 5.

All (25) close contacts within the same asymmetric unit are listed below.

Atom-1	Atom-2	Distance(Å)	Clash(Å)
1:A:466[A]:LEU:CD1	6:A:734:HOH:O	2.39	0.71
1:A:141:ALA:CA	6:A:629:HOH:O	2.40	0.70
1:A:97:GLU:O	1:A:98:VAL:C	2.32	0.68
1:A:95:VAL:CG2	1:A:117:SER:O	2.42	0.67
1:A:96:MET:O	1:A:102:GLY:N	2.34	0.60
1:A:392:ARG:CD	6:A:793:HOH:O	2.53	0.56
1:A:374:HIS:CE1	1:A:378:VAL:CG1	2.89	0.55
1:A:168:ARG:NH2	1:A:540:GLU:OE2	2.40	0.55
1:A:374:HIS:ND1	1:A:378:VAL:CG1	2.72	0.53
1:A:140:ARG:NH2	6:A:979:HOH:O	2.42	0.53
1:A:192:TYR:OH	1:A:540:GLU:OE2	2.29	0.51
1:A:145:ARG:CG	1:A:145:ARG:NH1	2.74	0.50
1:A:128:GLY:O	1:A:131:THR:OG1	2.30	0.50
1:A:438:SER:OG	1:A:440:HIS:CE1	2.65	0.49
1:A:98:VAL:O	1:A:99:PRO:C	2.51	0.48
1:A:119:GLU:OE1	1:A:119:GLU:N	2.48	0.46
1:A:532:GLN:NE2	6:A:740:HOH:O	2.48	0.45
1:A:129:ASP:C	6:A:677:HOH:O	2.54	0.45
1:A:573:ARG:NH2	6:A:813:HOH:O	2.50	0.45
1:A:435:VAL:N	1:A:464:HIS:CD2	2.86	0.44
1:A:467:ALA:O	1:A:468:HIS:C	2.56	0.43
1:A:129:ASP:CB	6:A:677:HOH:O	2.67	0.43
1:A:93:LEU:CD2	1:A:93:LEU:C	2.88	0.42
1:A:108:LEU:O	1:A:112:GLY:N	2.53	0.42
1:A:317:GLN:NE2	6:A:916:HOH:O	2.54	0.41

There are no symmetry-related clashes.

## 5.3 Torsion angles

### 5.3.1 Protein backbone ⓘ

In the following table, the Percentiles column shows the percent Ramachandran outliers of the chain as a percentile score with respect to all X-ray entries followed by that with respect to entries



of similar resolution. The Analysed column shows the number of residues for which the backbone conformation was analysed, and the total number of residues.

Mol	Chain	Analysed	Favoured	Allowed	Outliers	Percentiles
1	A	577/575 (100%)	550 (95%)	22 (4%)	5 (1%)	25 5

All (5) Ramachandran outliers are listed below:

Mol	Chain	Res	Type
1	A	138	PRO
1	A	101	VAL
1	A	382	GLY
1	A	89	PRO
1	A	98	VAL

### 5.3.2 Protein sidechains ⓘ

In the following table, the Percentiles column shows the percent sidechain outliers of the chain as a percentile score with respect to all X-ray entries followed by that with respect to entries of similar resolution. The Analysed column shows the number of residues for which the sidechain conformation was analysed, and the total number of residues.

Mol	Chain	Analysed	Rotameric	Outliers	Percentiles
1	A	470/466 (101%)	457 (97%)	13 (3%)	56 19

All (13) residues with a non-rotameric sidechain are listed below:

Mol	Chain	Res	Type
1	A	105	THR
1	A	108	LEU
1	A	109	LEU
1	A	120	LYS
1	A	122	LYS
1	A	139	LYS
1	A	140	ARG
1	A	145	ARG
1	A	148	LEU
1	A	274	GLN
1	A	276	LYS
1	A	380	VAL
1	A	558	ASN

Some sidechains can be flipped to improve hydrogen bonding and reduce clashes. There are no

such sidechains identified.

### 5.3.3 RNA ⓘ

There are no RNA chains in this entry.

## 5.4 Non-standard residues in protein, DNA, RNA chains ⓘ

There are no non-standard protein/DNA/RNA residues in this entry.

## 5.5 Carbohydrates ⓘ

There are no carbohydrates in this entry.

## 5.6 Ligand geometry ⓘ

Of 7 ligands modelled in this entry, 6 are monoatomic - leaving 1 for Mogul analysis.

In the following table, the Counts columns list the number of bonds (or angles) for which Mogul statistics could be retrieved, the number of bonds (or angles) that are observed in the model and the number of bonds (or angles) that are defined in the chemical component dictionary. The Link column lists molecule types, if any, to which the group is linked. The Z score for a bond length (or angle) is the number of standard deviations the observed value is removed from the expected value. A bond length (or angle) with  $|Z| > 2$  is considered an outlier worth inspection. RMSZ is the root-mean-square of all Z scores of the bond lengths (or angles).

Mol	Type	Chain	Res	Link	Bond lengths			Bond angles		
					Counts	RMSZ	$\# Z  > 2$	Counts	RMSZ	$\# Z  > 2$
2	DGT	A	576	4	33,33,33	1.43	4 (12%)	49,52,52	3.84	8 (16%)

In the following table, the Chirals column lists the number of chiral outliers, the number of chiral centers analysed, the number of these observed in the model and the number defined in the chemical component dictionary. Similar counts are reported in the Torsion and Rings columns. '-' means no outliers of that kind were identified.

Mol	Type	Chain	Res	Link	Chirals	Torsions	Rings
2	DGT	A	576	4	-	0/20/34/34	0/1/3/3

All (4) bond length outliers are listed below:

Mol	Chain	Res	Type	Atoms	Z	Observed(Å)	Ideal(Å)
2	A	576	DGT	C6-C5	4.92	1.49	1.41

*Continued on next page...*

*Continued from previous page...*

Mol	Chain	Res	Type	Atoms	Z	Observed(Å)	Ideal(Å)
2	A	576	DGT	C2-N2	3.21	1.37	1.32
2	A	576	DGT	C2-N3	2.60	1.36	1.33
2	A	576	DGT	C5-C4	2.47	1.46	1.40

All (8) bond angle outliers are listed below:

Mol	Chain	Res	Type	Atoms	Z	Observed(°)	Ideal(°)
2	A	576	DGT	C6-C5-N7	24.23	137.40	134.14
2	A	576	DGT	N3-C4-N9	5.40	134.82	126.91
2	A	576	DGT	C2-N3-C4	5.12	122.28	115.09
2	A	576	DGT	C5-C4-N3	-4.72	119.10	125.94
2	A	576	DGT	C4-C5-N7	-3.66	106.39	109.52
2	A	576	DGT	N2-C2-N1	2.49	120.60	117.86
2	A	576	DGT	C8-N9-C4	2.42	108.75	106.90
2	A	576	DGT	C6-N1-C2	2.04	123.08	119.51

There are no chirality outliers.

There are no torsion outliers.

There are no ring outliers.

## 5.7 Other polymers ⓘ

There are no such residues in this entry.

## 5.8 Polymer linkage issues

There are no chain breaks in this entry.

## 6 Fit of model and data ⓘ

### 6.1 Protein, DNA and RNA chains ⓘ

In the following table, the column labelled ‘#RSRZ> 2’ contains the number (and percentage) of RSRZ outliers, followed by percent RSRZ outliers for the chain as percentile scores relative to all X-ray entries and entries of similar resolution. The OWAB column contains the minimum, median, 95<sup>th</sup> percentile and maximum values of the occupancy-weighted average B-factor per residue. The column labelled ‘Q< 0.9’ lists the number of (and percentage) of residues with an average occupancy less than 0.9.

Mol	Chain	Analysed	<RSRZ>	#RSRZ>2	OWAB(Å <sup>2</sup> )	Q<0.9
1	A	575/575 (100%)	0.84	102 (17%) 2   2	9, 15, 44, 53	1 (0%)

All (102) RSRZ outliers are listed below:

Mol	Chain	Res	Type	RSRZ
1	A	139	LYS	12.6
1	A	89	PRO	12.5
1	A	25	PHE	11.0
1	A	138	PRO	10.2
1	A	381	ALA	9.0
1	A	382	GLY	8.0
1	A	91	GLY	7.8
1	A	108	LEU	7.8
1	A	125	LEU	7.2
1	A	380	VAL	6.7
1	A	1	MET	6.5
1	A	137	GLY	6.1
1	A	118	LEU	6.0
1	A	90	ARG	6.0
1	A	79	ARG	5.8
1	A	378	VAL	5.6
1	A	379	ARG	5.6
1	A	104	LYS	5.5
1	A	140	ARG	5.3
1	A	154	ALA	5.3
1	A	105	THR	5.2
1	A	142	GLU	5.2
1	A	92	VAL	5.2
1	A	101	VAL	5.1
1	A	136	PHE	5.0
1	A	124	ALA	5.0
1	A	23	ASN	4.9

*Continued on next page...*

*Continued from previous page...*

Mol	Chain	Res	Type	RSRZ
1	A	27	VAL	4.8
1	A	86	ARG	4.8
1	A	572	ARG	4.8
1	A	115	ILE	4.8
1	A	88	VAL	4.7
1	A	26	ARG	4.5
1	A	119	GLU	4.3
1	A	117	SER	4.3
1	A	114	GLY	4.3
1	A	110	TYR	4.2
1	A	107	ARG	4.2
1	A	63	PRO	4.1
1	A	93	LEU	4.1
1	A	122	LYS	4.0
1	A	111	GLU	4.0
1	A	123	ALA	4.0
1	A	155	GLY	4.0
1	A	62	GLY	3.9
1	A	64	ASP	3.9
1	A	106	ALA	3.9
1	A	131	THR	3.9
1	A	134	LYS	3.7
1	A	128	GLY	3.7
1	A	121	LEU	3.7
1	A	120	LYS	3.6
1	A	116	ASP	3.5
1	A	56	MET	3.5
1	A	575	VAL	3.4
1	A	95	VAL	3.4
1	A	15	LEU	3.4
1	A	135	GLY	3.3
1	A	69	ILE	3.3
1	A	141	ALA	3.3
1	A	109	LEU	3.2
1	A	65	LEU	3.0
1	A	72	PHE	3.0
1	A	98	VAL	2.9
1	A	73	LEU	2.9
1	A	126	ASP	2.9
1	A	53	GLU	2.9
1	A	42	THR	2.8
1	A	102	GLY	2.8

*Continued on next page...*

*Continued from previous page...*

Mol	Chain	Res	Type	RSRZ
1	A	57	GLU	2.8
1	A	143	ARG	2.8
1	A	82	GLU	2.8
1	A	130	LEU	2.7
1	A	87	LYS	2.7
1	A	113	LEU	2.7
1	A	6	LEU	2.7
1	A	8	ARG	2.6
1	A	21	GLY	2.6
1	A	24	PRO	2.6
1	A	61	VAL	2.5
1	A	78	VAL	2.5
1	A	83	GLU	2.5
1	A	59	PRO	2.5
1	A	127	ARG	2.5
1	A	76	GLY	2.4
1	A	54	ALA	2.4
1	A	75	THR	2.4
1	A	55	LEU	2.3
1	A	84	LEU	2.3
1	A	289	GLU	2.3
1	A	22	ASP	2.3
1	A	145	ARG	2.3
1	A	5	GLU	2.2
1	A	133	LEU	2.1
1	A	94	GLU	2.1
1	A	383	GLY	2.1
1	A	52	LYS	2.1
1	A	41	ASP	2.1
1	A	77	LYS	2.1
1	A	44	ILE	2.1
1	A	225	TYR	2.0
1	A	10	PHE	2.0

## 6.2 Non-standard residues in protein, DNA, RNA chains ⓘ

There are no non-standard protein/DNA/RNA residues in this entry.

## 6.3 Carbohydrates ⓘ

There are no carbohydrates in this entry.

## 6.4 Ligands ⓘ

In the following table, the Atoms column lists the number of modelled atoms in the group and the number defined in the chemical component dictionary. LLDF column lists the quality of electron density of the group with respect to its neighbouring residues in protein, DNA or RNA chains. The B-factors column lists the minimum, median, 95<sup>th</sup> percentile and maximum values of B factors of atoms in the group. The column labelled 'Q< 0.9' lists the number of atoms with occupancy less than 0.9.

Mol	Type	Chain	Res	Atoms	RSR	LLDF	B-factors(Å <sup>2</sup> )	Q<0.9
3	ZN	A	577	1/1	0.31	14.57	18,18,18,18	1
2	DGT	A	576	31/31	0.08	-0.27	9,13,26,32	0
4	CA	A	581	1/1	0.12	-1.18	42,42,42,42	0
4	CA	A	578	1/1	0.05	-1.43	9,9,9,9	0
5	CL	A	582	1/1	0.05	-1.46	22,22,22,22	0
4	CA	A	579	1/1	0.04	-2.41	11,11,11,11	0
4	CA	A	580	1/1	0.03	-3.69	13,13,13,13	0

## 6.5 Other polymers ⓘ

There are no such residues in this entry.