



Full wwPDB X-ray Structure Validation Report

Feb 28, 2014 – 01:42 PM GMT

PDB ID : 1B25
Title : FORMALDEHYDE FERREDOXIN OXIDOREDUCTASE FROM PYRO-
COCCUS FURIOSUS
Authors : Hu, Y.L.; Faham, S.; Roy, R.; Adams, M.W.W.; Rees, D.C.
Deposited on : 1998-12-04
Resolution : 1.85 Å(reported)

This is a full wwPDB validation report for a publicly released PDB entry.
We welcome your comments at validation@mail.wwpdb.org
A user guide is available at <http://wwpdb.org/ValidationPDFNotes.html>

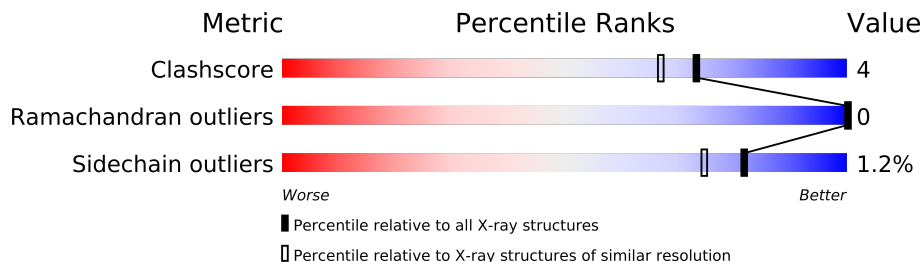
The following versions of software and data (see [references](#)) were used in the production of this report:

MolProbity : 4.02b-467
Mogul : 1.15 2013
Xtriage (Phenix) : **NOT EXECUTED**
EDS : **NOT EXECUTED**
Percentile statistics : 21963
Ideal geometry (proteins) : Engh & Huber (2001)
Ideal geometry (DNA, RNA) : Parkinson et. al. (1996)
Validation Pipeline (wwPDB-VP) : stable22683

1 Overall quality at a glance

The reported resolution of this entry is 1.85 Å.

Percentile scores (ranging between 0-100) for global validation metrics of the entry are shown in the following graphic. The table shows the number of entries on which the scores are based.



Metric	Whole archive (#Entries)	Similar resolution (#Entries, resolution range(Å))
Clashscore	79885	1470 (1.86-1.86)
Ramachandran outliers	78287	1451 (1.86-1.86)
Sidechain outliers	78261	1451 (1.86-1.86)

The table below summarises the geometric issues observed across the polymeric chains and their fit to the electron density. The red, orange, yellow and green segments on the lower bar indicate the fraction of residues that contain outliers for ≥ 3 , 2, 1 and 0 types of geometric quality criteria. The upper red bar (where present) indicates the fraction of residues that have poor fit to the electron density.

Note EDS was not executed.

Mol	Chain	Length	Quality of chain
1	A	619	
1	B	619	
1	C	619	
1	D	619	

2 Entry composition i

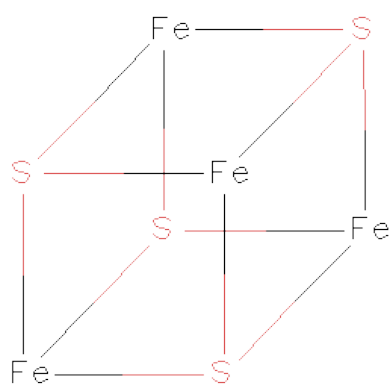
There are 4 unique types of molecules in this entry. The entry contains 20733 atoms, of which 0 are hydrogen and 0 are deuterium.

In the tables below, the ZeroOcc column contains the number of atoms modelled with zero occupancy, the AltConf column contains the number of residues with at least one atom in alternate conformation and the Trace column contains the number of residues modelled with at most 2 atoms.

- Molecule 1 is a protein called PROTEIN (FORMALDEHYDE FERREDOXIN OXIDOREDUCTASE).

Mol	Chain	Residues	Atoms					ZeroOcc	AltConf	Trace
1	A	611	Total	C	N	O	S	0	0	0
			4786	3067	809	888	22			
1	B	611	Total	C	N	O	S	0	0	0
			4786	3067	809	888	22			
1	C	611	Total	C	N	O	S	0	0	0
			4786	3067	809	888	22			
1	D	611	Total	C	N	O	S	0	0	0
			4786	3067	809	888	22			

- Molecule 2 is IRON/SULFUR CLUSTER (three-letter code: SF4) (formula: Fe₄S₄).



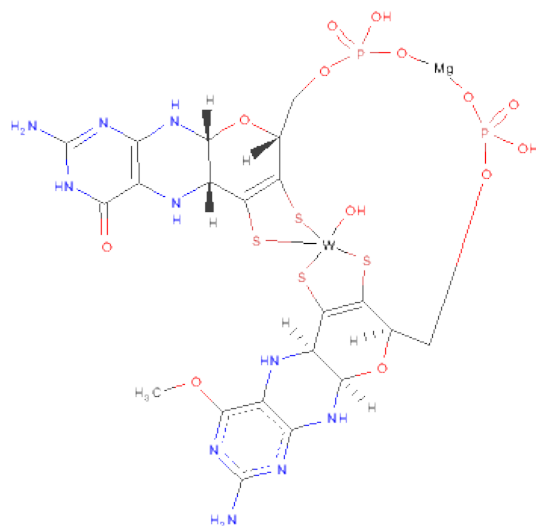
Mol	Chain	Residues	Atoms			ZeroOcc	AltConf
2	A	1	Total	Fe	S	0	0
			8	4	4		
2	B	1	Total	Fe	S	0	0
			8	4	4		

Continued on next page...

Continued from previous page...

Mol	Chain	Residues	Atoms			ZeroOcc	AltConf
2	C	1	Total	Fe	S	0	0
			8	4	4		
2	D	1	Total	Fe	S	0	0
			8	4	4		

- Molecule 3 is TUNGSTOPTERIN (three-letter code: PTT) (formula: $C_{21}H_{25}MgN_{10}O_{13}P_2S_4W$).



Mol	Chain	Residues	Atoms								ZeroOcc	AltConf
3	A	1	Total	C	Mg	N	O	P	S	W	0	0
			52	21	1	10	13	2	4	1		
3	B	1	Total	C	Mg	N	O	P	S	W	0	0
			52	21	1	10	13	2	4	1		
3	C	1	Total	C	Mg	N	O	P	S	W	0	0
			52	21	1	10	13	2	4	1		
3	D	1	Total	C	Mg	N	O	P	S	W	0	0
			52	21	1	10	13	2	4	1		

- Molecule 4 is water.

Mol	Chain	Residues	Atoms		ZeroOcc	AltConf
4	A	285	Total	O	0	0
			285	285		
4	B	318	Total	O	0	0
			318	318		
4	C	393	Total	O	0	0
			393	393		

Continued on next page...

Continued from previous page...

Mol	Chain	Residues	Atoms		ZeroOcc	AltConf
4	D	353	Total 353	O 353	0	0

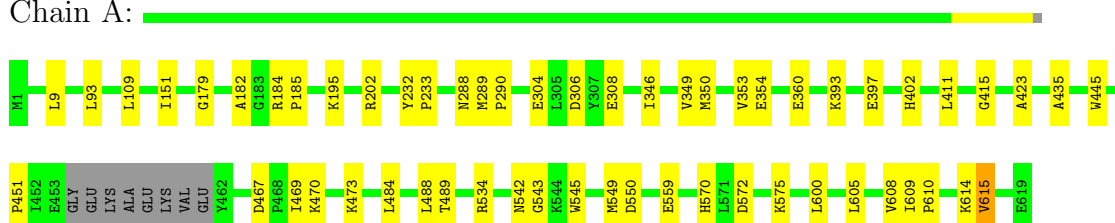
3 Residue-property plots

These plots are drawn for all protein, RNA and DNA chains in the entry. The first graphic for a chain summarises the proportions of errors displayed in the second graphic. The second graphic shows the sequence view annotated by issues in geometry and electron density. Residues are color-coded according to the number of geometric quality criteria for which they contain at least one outlier: green = 0, yellow = 1, orange = 2 and red = 3 or more. A red dot above a residue indicates a poor fit to the electron density ($RSRZ > 2$). Stretches of 2 or more consecutive residues without any outlier are shown as a green connector. Residues present in the sample, but not in the model, are shown in grey.

Note EDS was not executed.

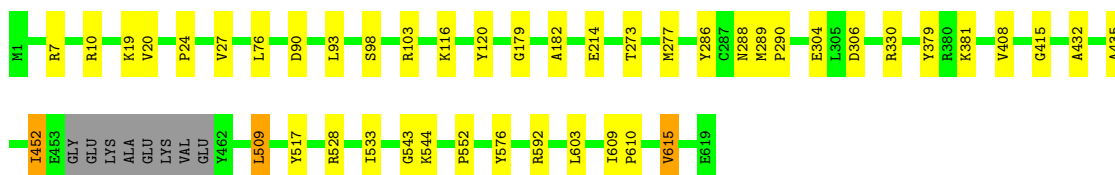
- Molecule 1: PROTEIN (FORMALDEHYDE FERREDOXIN OXIDOREDUCTASE)

Chain A:



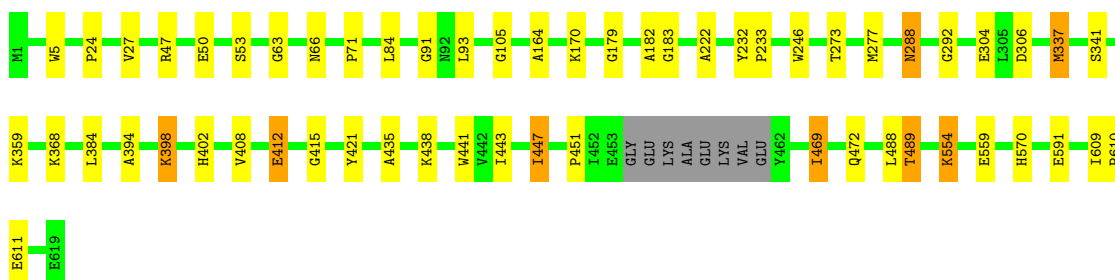
- Molecule 1: PROTEIN (FORMALDEHYDE FERREDOXIN OXIDOREDUCTASE)

Chain B:



- Molecule 1: PROTEIN (FORMALDEHYDE FERREDOXIN OXIDOREDUCTASE)

Chain C:



- Molecule 1: PROTEIN (FORMALDEHYDE FERREDOXIN OXIDOREDUCTASE)

Chain D:





4 Data and refinement statistics

Xtriage (Phenix) and EDS were not executed - this section will therefore be incomplete.

Property	Value	Source
Space group	P 21 21 21	Depositor
Cell constants a, b, c, α , β , γ	100.34Å 170.85Å 180.64Å 90.00° 90.00° 90.00°	Depositor
Resolution (Å)	20.00 – 1.85	Depositor
% Data completeness (in resolution range)	91.4 (20.00-1.85)	Depositor
R_{merge}	(Not available)	Depositor
R_{sym}	0.07	Depositor
Refinement program	X-PLOR 3.1	Depositor
R, R_{free}	0.174 , 0.220	Depositor
Estimated twinning fraction	No twinning to report.	Xtriage
Total number of atoms	20733	wwPDB-VP
Average B, all atoms (Å ²)	22.0	wwPDB-VP

5 Model quality

5.1 Standard geometry

Bond lengths and bond angles in the following residue types are not validated in this section: SF4, PTT

The Z score for a bond length (or angle) is the number of standard deviations the observed value is removed from the expected value. A bond length (or angle) with $|Z| > 5$ is considered an outlier worth inspection. RMSZ is the root-mean-square of all Z scores of the bond lengths (or angles).

Mol	Chain	Bond lengths		Bond angles	
		RMSZ	# Z >5	RMSZ	# Z >5
1	A	0.49	0/4896	0.68	1/6619 (0.0%)
1	B	0.48	0/4896	0.69	2/6619 (0.0%)
1	C	0.52	0/4896	0.70	1/6619 (0.0%)
1	D	0.51	0/4896	0.69	2/6619 (0.0%)
All	All	0.50	0/19584	0.69	6/26476 (0.0%)

Chiral center outliers are detected by calculating the chiral volume of a chiral center and verifying if the center is modelled as a planar moiety or with the opposite hand. A planarity outlier is detected by checking planarity of atoms in a peptide group, atoms in a mainchain group or atoms of a sidechain that are expected to be planar.

Mol	Chain	#Chirality outliers	#Planarity outliers
1	B	0	1

There are no bond length outliers.

All (6) bond angle outliers are listed below:

Mol	Chain	Res	Type	Atoms	Z	Observed(°)	Ideal(°)
1	B	90	ASP	CB-CG-OD1	5.85	123.56	118.30
1	D	539	ARG	NE-CZ-NH2	-5.60	117.50	120.30
1	D	415	GLY	N-CA-C	5.43	126.67	113.10
1	A	415	GLY	N-CA-C	5.22	126.14	113.10
1	C	415	GLY	N-CA-C	5.09	125.81	113.10
1	B	415	GLY	N-CA-C	5.06	125.75	113.10

There are no chirality outliers.

All (1) planarity outliers are listed below:

Mol	Chain	Res	Type	Group
1	B	120	TYR	Sidechain

5.2 Close contacts ⓘ

In the following table, the Non-H and H(model) columns list the number of non-hydrogen atoms and hydrogen atoms in the chain respectively. The H(added) column lists the number of hydrogens added by MolProbity. The Clashes column lists the number of clashes within the asymmetric unit, and the number in parentheses is this value normalized per 1000 atoms of the molecule in the chain. The Symm-Clashes column gives symmetry related clashes, in the same way as for the Clashes column.

Mol	Chain	Non-H	H(model)	H(added)	Clashes	Symm-Clashes
1	A	4786	0	4773	39	0
1	B	4786	0	4773	30	0
1	C	4786	0	4773	44	0
1	D	4786	0	4773	26	0
2	A	8	0	0	0	0
2	B	8	0	0	1	0
2	C	8	0	0	0	0
2	D	8	0	0	1	0
3	A	52	0	22	12	0
3	B	52	0	22	12	0
3	C	52	0	22	11	0
3	D	52	0	22	13	0
4	A	285	0	0	8	0
4	B	318	0	0	11	0
4	C	393	0	0	6	0
4	D	353	0	0	8	0
All	All	20733	0	19180	160	0

Clashscore is defined as the number of clashes calculated for the entry per 1000 atoms (including hydrogens) of the entry. The overall clashscore for this entry is 4.

All (160) close contacts within the same asymmetric unit are listed below.

Atom-1	Atom-2	Distance(Å)	Clash(Å)
1:D:179:GLY:O	3:D:803:PTT:HA12	1.43	1.17
1:C:179:GLY:O	3:C:802:PTT:HA12	1.46	1.13
1:B:179:GLY:O	3:B:801:PTT:HA12	1.46	1.12
1:A:179:GLY:O	3:A:800:PTT:HA12	1.50	1.11
3:A:800:PTT:HA13	4:A:1084:HOH:O	1.57	1.04
3:D:803:PTT:HA11	4:D:1156:HOH:O	1.57	1.02
3:C:802:PTT:HA13	4:C:1194:HOH:O	1.60	1.01

Continued on next page...

Continued from previous page...

Atom-1	Atom-2	Distance(Å)	Clash(Å)
3:D:803:PTT:O8	3:D:803:PTT:CA1	2.11	0.97
3:C:802:PTT:O8	3:C:802:PTT:CA1	2.12	0.97
3:A:800:PTT:CA1	3:A:800:PTT:O8	2.13	0.95
3:B:801:PTT:CA1	3:B:801:PTT:O8	2.14	0.94
3:B:801:PTT:HA13	4:B:1118:HOH:O	1.68	0.94
1:C:63:GLY:H	1:C:66:ASN:HD22	1.15	0.93
3:B:801:PTT:HA11	4:B:1119:HOH:O	1.69	0.91
1:C:554:LYS:H	1:C:554:LYS:HD2	1.36	0.90
3:D:803:PTT:HA13	4:D:1155:HOH:O	1.74	0.87
1:C:306:ASP:OD2	3:C:802:PTT:CA1	2.27	0.83
1:D:93:LEU:HB3	1:D:182:ALA:HB2	1.61	0.82
1:B:379:TYR:HB2	1:B:381:LYS:HE2	1.61	0.81
3:A:800:PTT:HA11	4:A:1085:HOH:O	1.82	0.80
1:C:306:ASP:OD2	3:C:802:PTT:HA11	1.81	0.79
1:A:93:LEU:HB3	1:A:182:ALA:HB2	1.64	0.78
1:D:306:ASP:OD2	3:D:803:PTT:CA1	2.30	0.78
1:D:179:GLY:O	3:D:803:PTT:CA1	2.28	0.78
1:A:423:ALA:HB2	1:A:470:LYS:HG3	1.66	0.78
3:C:802:PTT:HA11	4:C:1195:HOH:O	1.85	0.77
1:B:179:GLY:O	3:B:801:PTT:CA1	2.32	0.77
1:B:306:ASP:OD2	3:B:801:PTT:CA1	2.33	0.76
1:C:554:LYS:H	1:C:554:LYS:CD	1.99	0.76
1:A:179:GLY:O	3:A:800:PTT:CA1	2.32	0.76
1:C:179:GLY:O	3:C:802:PTT:CA1	2.30	0.74
1:C:93:LEU:HB3	1:C:182:ALA:HB2	1.71	0.73
1:B:93:LEU:HB3	1:B:182:ALA:HB2	1.70	0.73
1:A:306:ASP:OD2	3:A:800:PTT:CA1	2.36	0.73
1:C:50:GLU:HB2	1:C:53:SER:HB3	1.70	0.72
3:D:803:PTT:CA1	4:D:1155:HOH:O	2.33	0.70
1:A:306:ASP:OD2	3:A:800:PTT:HA11	1.91	0.70
3:A:800:PTT:CA1	4:A:1085:HOH:O	2.38	0.69
3:B:801:PTT:CA1	4:B:1119:HOH:O	2.34	0.68
1:C:63:GLY:H	1:C:66:ASN:ND2	1.90	0.67
3:C:802:PTT:CA1	4:C:1195:HOH:O	2.40	0.66
1:A:610:PRO:O	1:A:614:LYS:HG3	1.96	0.66
1:B:306:ASP:OD2	3:B:801:PTT:HA11	1.95	0.65
1:C:84:LEU:HD13	1:C:170:LYS:HB3	1.79	0.64
1:D:306:ASP:OD2	3:D:803:PTT:HA13	1.96	0.64
1:B:528:ARG:HD3	1:B:603:LEU:O	2.01	0.60
1:C:443:ILE:O	1:C:447:ILE:HG12	2.00	0.60
1:B:304:GLU:OE1	3:B:801:PTT:CA1	2.50	0.59
1:A:451:PRO:HG2	4:A:882:HOH:O	2.04	0.57

Continued on next page...

Continued from previous page...

Atom-1	Atom-2	Distance(Å)	Clash(Å)
1:B:452:ILE:HG13	4:B:960:HOH:O	2.05	0.57
1:C:24:PRO:HG2	1:C:27:VAL:HG23	1.87	0.57
1:B:543:GLY:CA	1:B:615:VAL:HG13	2.35	0.56
1:B:7:ARG:NH1	1:B:20:VAL:HG11	2.20	0.55
1:D:543:GLY:CA	1:D:615:VAL:HG13	2.36	0.55
1:A:605:LEU:O	1:A:608:VAL:HG13	2.06	0.54
1:D:24:PRO:HG2	1:D:27:VAL:HG23	1.89	0.54
1:A:350:MET:O	1:A:354:GLU:HG3	2.08	0.54
1:A:549:MET:HE2	4:A:958:HOH:O	2.06	0.54
1:B:93:LEU:HA	3:B:801:PTT:O5P	2.07	0.54
1:A:304:GLU:OE1	3:A:800:PTT:CA1	2.56	0.54
1:B:544:LYS:HE3	4:B:948:HOH:O	2.08	0.53
1:A:308:GLU:HB2	3:A:800:PTT:S4	2.50	0.52
1:D:349:VAL:O	1:D:353:VAL:HG23	2.08	0.52
1:A:423:ALA:HB2	1:A:470:LYS:CG	2.37	0.52
1:B:509:LEU:HD13	1:B:517:TYR:CD1	2.45	0.52
1:D:10:ARG:HH22	1:D:45:GLU:CD	2.13	0.52
1:C:341:SER:OG	1:C:412:GLU:HG2	2.10	0.52
1:C:63:GLY:N	1:C:66:ASN:HD22	1.95	0.51
3:A:800:PTT:CA1	4:A:1084:HOH:O	2.36	0.51
1:D:24:PRO:HG2	1:D:27:VAL:CG2	2.41	0.51
1:A:93:LEU:HA	3:A:800:PTT:O5P	2.11	0.51
1:C:292:GLY:HA2	4:C:1064:HOH:O	2.11	0.51
1:C:359:LYS:HE2	1:C:359:LYS:HA	1.92	0.51
1:C:341:SER:HA	1:C:412:GLU:CG	2.41	0.50
1:D:91:GLY:HA3	1:D:183:GLY:H	1.75	0.50
1:D:304:GLU:OE1	3:D:803:PTT:CA1	2.60	0.50
1:A:572:ASP:OD2	1:A:575:LYS:HG3	2.12	0.50
1:C:304:GLU:OE1	3:C:802:PTT:CA1	2.60	0.50
1:C:91:GLY:HA3	1:C:183:GLY:H	1.76	0.50
1:B:116:LYS:HD3	4:B:935:HOH:O	2.12	0.50
1:B:103:ARG:HD2	4:B:1103:HOH:O	2.12	0.48
1:A:542:ASN:HA	1:A:615:VAL:HG21	1.96	0.48
1:B:103:ARG:NH2	1:B:286:TYR:OH	2.46	0.48
1:B:24:PRO:HG2	1:B:27:VAL:HG23	1.95	0.48
1:C:421:TYR:HE1	1:C:447:ILE:HG23	1.78	0.48
1:B:452:ILE:HD11	4:B:1006:HOH:O	2.14	0.48
1:D:93:LEU:HA	3:D:803:PTT:O5P	2.14	0.47
1:C:164:ALA:CB	1:C:337:MET:HG2	2.44	0.47
1:C:368:LYS:HG2	4:C:976:HOH:O	2.15	0.47
1:A:600:LEU:HD13	1:A:608:VAL:HG22	1.97	0.47
1:D:251:TYR:HD1	4:D:1096:HOH:O	1.97	0.47

Continued on next page...

Continued from previous page...

Atom-1	Atom-2	Distance(Å)	Clash(Å)
3:C:802:PTT:CA1	4:C:1194:HOH:O	2.37	0.47
1:C:93:LEU:HA	3:C:802:PTT:O5P	2.14	0.46
1:A:534:ARG:HH21	1:A:545:TRP:HE1	1.62	0.46
1:A:151:ILE:HG13	1:D:151:ILE:HG13	1.96	0.46
1:D:552:PRO:HD3	1:D:576:TYR:CZ	2.50	0.46
1:D:10:ARG:NH2	1:D:45:GLU:OE2	2.48	0.46
1:C:341:SER:HA	1:C:412:GLU:HG2	1.98	0.45
1:B:609:ILE:HB	1:B:610:PRO:HD3	1.98	0.45
2:B:701:SF4:S4	3:B:801:PTT:H22	2.57	0.45
1:C:402:HIS:CE1	1:C:554:LYS:HD3	2.51	0.45
3:B:801:PTT:CA1	4:B:1118:HOH:O	2.41	0.45
1:B:103:ARG:HD3	4:B:979:HOH:O	2.16	0.45
1:C:609:ILE:HB	1:C:610:PRO:HD3	1.98	0.45
1:C:341:SER:HA	1:C:412:GLU:HG3	2.00	0.44
1:A:349:VAL:O	1:A:353:VAL:HG23	2.18	0.44
1:A:609:ILE:HB	1:A:610:PRO:HD3	1.99	0.44
1:A:534:ARG:HH22	1:A:550:ASP:CG	2.21	0.44
1:B:552:PRO:HD3	1:B:576:TYR:CZ	2.52	0.44
1:D:330:ARG:HD3	4:D:1132:HOH:O	2.18	0.44
1:D:542:ASN:HA	1:D:615:VAL:HG21	2.00	0.44
1:A:534:ARG:NH2	1:A:550:ASP:OD2	2.51	0.44
1:A:467:ASP:O	1:A:470:LYS:HB2	2.18	0.44
1:D:488:LEU:N	1:D:489:THR:HA	2.33	0.43
1:A:445:TRP:CE2	1:A:473:LYS:HG3	2.53	0.43
1:C:232:TYR:HB3	1:C:233:PRO:HD3	2.00	0.43
1:C:394:ALA:O	1:C:398:LYS:HE2	2.18	0.43
1:A:202:ARG:HD2	4:A:910:HOH:O	2.17	0.43
1:A:402:HIS:CD2	4:A:855:HOH:O	2.71	0.43
1:C:421:TYR:CE1	1:C:447:ILE:HG23	2.53	0.43
1:B:76:LEU:HB2	1:B:98:SER:HB2	1.99	0.43
1:D:560:GLY:O	1:D:562:LYS:HE3	2.19	0.43
1:C:273:THR:O	1:C:277:MET:HG2	2.18	0.43
1:C:488:LEU:N	1:C:489:THR:HA	2.34	0.43
1:A:184:ARG:HB2	1:A:185:PRO:HD3	2.01	0.43
1:B:10:ARG:HB2	1:B:19:LYS:HG3	2.01	0.43
1:A:543:GLY:CA	1:A:615:VAL:HG13	2.49	0.43
1:A:289:MET:N	1:A:290:PRO:HD3	2.34	0.42
1:D:429:GLY:O	1:D:550:ASP:HA	2.20	0.42
1:B:288:ASN:C	1:B:290:PRO:HD3	2.40	0.42
1:A:393:LYS:O	1:A:397:GLU:HG2	2.18	0.42
2:D:703:SF4:S4	3:D:803:PTT:H22	2.59	0.42
1:D:561:LEU:HD22	4:D:1096:HOH:O	2.19	0.42

Continued on next page...

Continued from previous page...

Atom-1	Atom-2	Distance(Å)	Clash(Å)
1:C:441:TRP:HH2	1:C:451:PRO:HD2	1.84	0.42
1:C:50:GLU:HB2	1:C:53:SER:CB	2.45	0.42
1:C:408:VAL:HB	1:C:435:ALA:HB2	2.01	0.42
1:A:346:ILE:O	1:A:350:MET:HG3	2.20	0.42
1:C:246:TRP:CH2	1:C:447:ILE:HD11	2.54	0.42
1:C:469:ILE:HD13	1:C:472:GLN:HB3	2.02	0.42
1:A:484:LEU:O	1:A:488:LEU:HG	2.20	0.41
1:A:488:LEU:N	1:A:489:THR:HA	2.35	0.41
1:B:592:ARG:HD2	4:B:1065:HOH:O	2.18	0.41
1:D:256:ARG:HD2	4:D:968:HOH:O	2.19	0.41
1:D:306:ASP:OD2	3:D:803:PTT:HA11	2.16	0.41
3:D:803:PTT:CA1	4:D:1156:HOH:O	2.38	0.41
1:D:50:GLU:HB2	1:D:53:SER:HB3	2.02	0.41
1:A:559:GLU:O	1:A:570:HIS:HB3	2.19	0.41
1:C:288:ASN:H	1:C:288:ASN:HD22	1.68	0.41
1:B:273:THR:O	1:B:277:MET:HG2	2.21	0.41
1:B:289:MET:N	1:B:290:PRO:HD3	2.36	0.41
1:C:559:GLU:O	1:C:570:HIS:HB3	2.21	0.41
1:B:432:ALA:HB1	1:B:533:ILE:HG21	2.03	0.41
1:A:232:TYR:HB3	1:A:233:PRO:HD3	2.03	0.41
1:C:71:PRO:HG2	1:C:222:ALA:HB3	2.03	0.41
1:C:47:ARG:NH1	1:C:611:GLU:OE2	2.54	0.40
1:C:66:ASN:HD21	1:C:489:THR:HG22	1.85	0.40
1:A:411:LEU:O	1:A:435:ALA:HB3	2.21	0.40
1:B:408:VAL:HB	1:B:435:ALA:HB2	2.03	0.40
1:A:9:LEU:HD23	1:A:109:LEU:HD13	2.02	0.40
1:C:5:TRP:CE2	1:C:105:GLY:HA2	2.57	0.40

There are no symmetry-related clashes.

5.3 Torsion angles

5.3.1 Protein backbone ⓘ

In the following table, the Percentiles column shows the percent Ramachandran outliers of the chain as a percentile score with respect to all X-ray entries followed by that with respect to entries of similar resolution. The Analysed column shows the number of residues for which the backbone conformation was analysed, and the total number of residues.

Mol	Chain	Analysed	Favoured	Allowed	Outliers	Percentiles	
1	A	607/619 (98%)	588 (97%)	19 (3%)	0	100	100

Continued on next page...

Continued from previous page...

Mol	Chain	Analysed	Favoured	Allowed	Outliers	Percentiles	
1	B	607/619 (98%)	588 (97%)	19 (3%)	0	100	100
1	C	607/619 (98%)	588 (97%)	19 (3%)	0	100	100
1	D	607/619 (98%)	591 (97%)	16 (3%)	0	100	100
All	All	2428/2476 (98%)	2355 (97%)	73 (3%)	0	100	100

There are no Ramachandran outliers to report.

5.3.2 Protein sidechains ⓘ

In the following table, the Percentiles column shows the percent sidechain outliers of the chain as a percentile score with respect to all X-ray entries followed by that with respect to entries of similar resolution. The Analysed column shows the number of residues for which the sidechain conformation was analysed, and the total number of residues.

Mol	Chain	Analysed	Rotameric	Outliers	Percentiles	
1	A	493/499 (99%)	488 (99%)	5 (1%)	85	80
1	B	493/499 (99%)	488 (99%)	5 (1%)	85	80
1	C	493/499 (99%)	482 (98%)	11 (2%)	64	48
1	D	493/499 (99%)	491 (100%)	2 (0%)	95	93
All	All	1972/1996 (99%)	1949 (99%)	23 (1%)	82	75

All (23) residues with a non-rotameric sidechain are listed below:

Mol	Chain	Res	Type
1	A	195	LYS
1	A	288	ASN
1	A	360	GLU
1	A	469	ILE
1	A	615	VAL
1	B	214	GLU
1	B	330	ARG
1	B	452	ILE
1	B	509	LEU
1	B	615	VAL
1	C	288	ASN
1	C	337	MET
1	C	384	LEU
1	C	398	LYS

Continued on next page...

Continued from previous page...

Mol	Chain	Res	Type
1	C	412	GLU
1	C	438	LYS
1	C	447	ILE
1	C	469	ILE
1	C	489	THR
1	C	554	LYS
1	C	591	GLU
1	D	212	LYS
1	D	615	VAL

Some sidechains can be flipped to improve hydrogen bonding and reduce clashes. All (5) such sidechains are listed below:

Mol	Chain	Res	Type
1	A	288	ASN
1	A	542	ASN
1	C	66	ASN
1	C	288	ASN
1	C	372	GLN

5.3.3 RNA ⓘ

There are no RNA chains in this entry.

5.4 Non-standard residues in protein, DNA, RNA chains ⓘ

There are no non-standard protein/DNA/RNA residues in this entry.

5.5 Carbohydrates ⓘ

There are no carbohydrates in this entry.

5.6 Ligand geometry ⓘ

8 ligands are modelled in this entry.

In the following table, the Counts columns list the number of bonds (or angles) for which Mogul statistics could be retrieved, the number of bonds (or angles) that are observed in the model and the number of bonds (or angles) that are defined in the chemical component dictionary. The Link column lists molecule types, if any, to which the group is linked. The Z score for a bond length

(or angle) is the number of standard deviations the observed value is removed from the expected value. A bond length (or angle) with $|Z| > 2$ is considered an outlier worth inspection. RMSZ is the root-mean-square of all Z scores of the bond lengths (or angles).

Mol	Type	Chain	Res	Link	Bond lengths			Bond angles		
					Counts	RMSZ	# Z > 2	Counts	RMSZ	# Z > 2
2	SF4	A	700	1	12,12,12	7.58	12 (100%)	0,24,24	0.00	-
3	PTT	A	800	1,4	57,60,60	4.06	17 (29%)	77,98,98	7.99	25 (32%)
2	SF4	B	701	1	12,12,12	5.86	10 (83%)	0,24,24	0.00	-
3	PTT	B	801	1,4	57,60,60	4.14	21 (36%)	77,98,98	8.87	33 (42%)
2	SF4	C	702	1	12,12,12	6.14	11 (91%)	0,24,24	0.00	-
3	PTT	C	802	1,4	57,60,60	4.27	23 (40%)	77,98,98	8.07	31 (40%)
2	SF4	D	703	1	12,12,12	5.58	10 (83%)	0,24,24	0.00	-
3	PTT	D	803	1,4	57,60,60	3.88	22 (38%)	77,98,98	8.82	28 (36%)

In the following table, the Chirals column lists the number of chiral outliers, the number of chiral centers analysed, the number of these observed in the model and the number defined in the chemical component dictionary. Similar counts are reported in the Torsion and Rings columns. '-' means no outliers of that kind were identified.

Mol	Type	Chain	Res	Link	Chirals	Torsions	Rings
2	SF4	A	700	1	-	0/0/48/48	0/0/5/5
3	PTT	A	800	1,4	-	0/14/102/102	0/0/9/9
2	SF4	B	701	1	-	0/0/48/48	0/0/5/5
3	PTT	B	801	1,4	-	0/14/102/102	0/0/9/9
2	SF4	C	702	1	-	0/0/48/48	0/0/5/5
3	PTT	C	802	1,4	-	0/14/102/102	0/0/9/9
2	SF4	D	703	1	-	0/0/48/48	0/0/5/5
3	PTT	D	803	1,4	-	0/14/102/102	0/0/9/9

All (126) bond length outliers are listed below:

Mol	Chain	Res	Type	Atoms	Z	Observed(Å)	Ideal(Å)
3	B	801	PTT	O8-CA1	22.53	2.14	1.42
3	A	800	PTT	O8-CA1	22.21	2.13	1.42
3	C	802	PTT	O8-CA1	21.73	2.12	1.42
3	D	803	PTT	O8-CA1	21.43	2.11	1.42
2	A	700	SF4	S2-FE3	-13.62	2.24	2.33
2	B	701	SF4	S2-FE4	-11.70	2.25	2.33
2	C	702	SF4	S2-FE3	-11.31	2.25	2.33
2	A	700	SF4	S4-FE1	-10.93	2.25	2.33
2	A	700	SF4	S1-FE4	-10.88	2.25	2.33
3	C	802	PTT	W1-S23	10.38	2.54	2.33

Continued on next page...

Continued from previous page...

Mol	Chain	Res	Type	Atoms	Z	Observed(Å)	Ideal(Å)
3	A	800	PTT	W1-S3	9.92	2.53	2.33
2	C	702	SF4	S1-FE4	-9.84	2.26	2.33
3	C	802	PTT	W1-S24	9.60	2.52	2.33
2	D	703	SF4	S2-FE3	-9.42	2.26	2.33
3	B	801	PTT	W1-S24	9.21	2.52	2.33
3	A	800	PTT	W1-S4	8.95	2.51	2.33
2	D	703	SF4	S4-FE1	-8.81	2.27	2.33
3	C	802	PTT	W1-S3	8.81	2.51	2.33
2	B	701	SF4	S1-FE3	-8.62	2.27	2.33
3	B	801	PTT	W1-S23	8.46	2.50	2.33
3	D	803	PTT	W1-S23	8.40	2.50	2.33
3	C	802	PTT	W1-S4	8.25	2.50	2.33
3	A	800	PTT	W1-S23	8.09	2.49	2.33
3	B	801	PTT	W1-S4	7.76	2.49	2.33
2	D	703	SF4	S2-FE4	-7.59	2.28	2.33
2	B	701	SF4	S2-FE1	-7.54	2.28	2.33
2	D	703	SF4	S1-FE4	-7.26	2.28	2.33
2	A	700	SF4	S2-FE4	-7.17	2.28	2.33
3	C	802	PTT	O28-C28	7.15	1.38	1.24
2	C	702	SF4	S4-FE1	-7.00	2.28	2.33
3	D	803	PTT	W1-S3	6.81	2.47	2.33
2	A	700	SF4	S2-FE1	-6.76	2.28	2.33
3	D	803	PTT	O28-C28	6.71	1.37	1.24
3	D	803	PTT	W1-S4	6.51	2.46	2.33
2	C	702	SF4	S2-FE1	-6.50	2.28	2.33
3	B	801	PTT	O28-C28	6.47	1.37	1.24
2	B	701	SF4	S2-FE3	-6.31	2.29	2.33
3	D	803	PTT	W1-S24	6.05	2.45	2.33
2	A	700	SF4	S1-FE2	-6.05	2.29	2.33
2	C	702	SF4	S4-FE3	-5.98	2.29	2.33
2	C	702	SF4	S1-FE2	-5.94	2.29	2.33
2	A	700	SF4	S3-FE2	-5.86	2.29	2.33
2	A	700	SF4	S4-FE2	-5.75	2.29	2.33
3	B	801	PTT	W1-S3	5.66	2.44	2.33
3	A	800	PTT	O28-C28	5.36	1.35	1.24
2	B	701	SF4	S4-FE1	-5.12	2.29	2.33
2	D	703	SF4	S2-FE1	-5.11	2.29	2.33
2	B	701	SF4	S3-FE1	-4.88	2.30	2.33
2	C	702	SF4	S3-FE2	-4.87	2.30	2.33
2	D	703	SF4	S1-FE2	-4.56	2.30	2.33
2	A	700	SF4	S4-FE3	-4.55	2.30	2.33
2	B	701	SF4	S1-FE4	-4.52	2.30	2.33

Continued on next page...

Continued from previous page...

Mol	Chain	Res	Type	Atoms	Z	Observed(Å)	Ideal(Å)
2	A	700	SF4	S1-FE3	-4.43	2.30	2.33
3	A	800	PTT	W1-S24	4.42	2.42	2.33
3	B	801	PTT	C4-S4	-4.32	1.72	1.77
3	C	802	PTT	O2-C14	-4.29	1.37	1.44
2	C	702	SF4	S3-FE4	-4.29	2.30	2.33
3	B	801	PTT	C3-S3	-4.07	1.72	1.77
3	A	800	PTT	C23-S23	-4.01	1.72	1.77
3	C	802	PTT	C23-S23	-4.01	1.72	1.77
2	D	703	SF4	S4-FE3	-3.94	2.30	2.33
3	D	803	PTT	C4-S4	-3.84	1.73	1.77
2	D	703	SF4	S3-FE4	-3.71	2.30	2.33
3	B	801	PTT	O2-C14	-3.69	1.38	1.44
3	A	800	PTT	O2-C14	-3.69	1.38	1.44
3	D	803	PTT	C27-C32	3.69	1.46	1.41
2	A	700	SF4	S3-FE1	-3.64	2.30	2.33
3	C	802	PTT	C4-S4	-3.50	1.73	1.77
3	A	800	PTT	P1-O1P	3.46	1.58	1.51
3	C	802	PTT	P2-O5P	3.45	1.58	1.51
2	B	701	SF4	S3-FE2	-3.41	2.31	2.33
2	C	702	SF4	S2-FE4	-3.39	2.31	2.33
3	B	801	PTT	C23-S23	-3.37	1.73	1.77
2	B	701	SF4	S4-FE3	-3.37	2.31	2.33
3	D	803	PTT	C3-S3	-3.36	1.73	1.77
3	A	800	PTT	C4-S4	-3.34	1.73	1.77
3	C	802	PTT	C27-C32	3.30	1.46	1.41
3	C	802	PTT	O2-C2	-3.29	1.38	1.43
2	A	700	SF4	S3-FE4	-3.28	2.31	2.33
3	B	801	PTT	C30-N30	3.27	1.37	1.32
3	A	800	PTT	C3-S3	-3.26	1.73	1.77
2	D	703	SF4	S1-FE3	-3.20	2.31	2.33
3	B	801	PTT	P1-O1P	3.17	1.58	1.51
3	A	800	PTT	P2-O5P	3.11	1.58	1.51
3	C	802	PTT	C24-C23	3.08	1.41	1.34
3	D	803	PTT	C5-C4	3.08	1.55	1.50
3	A	800	PTT	O22-C22	-3.06	1.39	1.43
2	D	703	SF4	S3-FE1	-3.06	2.31	2.33
3	B	801	PTT	P2-O5P	2.96	1.57	1.51
3	D	803	PTT	C23-S23	-2.68	1.74	1.77
3	D	803	PTT	O2-C14	-2.67	1.40	1.44
3	C	802	PTT	P1-O1P	2.67	1.57	1.51
3	B	801	PTT	C24-C23	2.62	1.40	1.34
3	D	803	PTT	O2-C2	-2.57	1.39	1.43

Continued on next page...

Continued from previous page...

Mol	Chain	Res	Type	Atoms	Z	Observed(Å)	Ideal(Å)
3	D	803	PTT	P1-O1P	2.55	1.56	1.51
3	A	800	PTT	O2-C2	-2.52	1.39	1.43
2	B	701	SF4	S4-FE2	-2.50	2.31	2.33
3	D	803	PTT	C22-C23	2.50	1.55	1.51
3	C	802	PTT	O22-C22	-2.47	1.39	1.43
3	A	800	PTT	O22-C34	-2.47	1.40	1.44
3	B	801	PTT	O22-C34	-2.45	1.40	1.44
3	A	800	PTT	C2-C3	2.43	1.55	1.51
3	D	803	PTT	C24-C23	2.43	1.40	1.34
2	C	702	SF4	S1-FE3	-2.42	2.31	2.33
3	C	802	PTT	C3-S3	-2.41	1.74	1.77
2	C	702	SF4	S3-FE1	-2.39	2.31	2.33
3	C	802	PTT	C7-N6	-2.38	1.33	1.38
3	B	801	PTT	O22-C22	-2.34	1.40	1.43
3	D	803	PTT	C30-N30	2.28	1.36	1.32
3	B	801	PTT	C24-S24	-2.26	1.75	1.77
3	C	802	PTT	C2-C3	2.23	1.55	1.51
3	C	802	PTT	P1-O2P	2.21	1.59	1.51
3	C	802	PTT	C30-N30	2.17	1.35	1.32
3	C	802	PTT	C8-N9	2.17	1.35	1.32
3	B	801	PTT	C8-N9	2.12	1.35	1.32
3	D	803	PTT	C8-N9	2.12	1.35	1.32
3	C	802	PTT	C1-C2	2.10	1.55	1.52
3	A	800	PTT	C8-N9	2.11	1.35	1.32
3	D	803	PTT	O22-C34	-2.09	1.41	1.44
3	D	803	PTT	C2-C3	2.08	1.55	1.51
3	D	803	PTT	P2-O5P	2.08	1.55	1.51
3	B	801	PTT	O2-C2	-2.07	1.40	1.43
3	B	801	PTT	C2-C3	2.06	1.55	1.51
3	B	801	PTT	C25-C24	2.05	1.53	1.50
3	D	803	PTT	C1-C2	2.02	1.55	1.52
3	C	802	PTT	C34-C25	2.01	1.57	1.53

All (117) bond angle outliers are listed below:

Mol	Chain	Res	Type	Atoms	Z	Observed(°)	Ideal(°)
3	D	803	PTT	C5-C4-S4	-47.98	113.47	124.76
3	A	800	PTT	CA1-O8-C8	47.68	165.72	117.33
3	B	801	PTT	CA1-O8-C8	47.09	165.12	117.33
3	C	802	PTT	CA1-O8-C8	45.69	163.70	117.33
3	B	801	PTT	C5-C4-S4	-43.53	114.51	124.76
3	D	803	PTT	CA1-O8-C8	42.94	160.91	117.33

Continued on next page...

Continued from previous page...

Mol	Chain	Res	Type	Atoms	Z	Observed(°)	Ideal(°)
3	A	800	PTT	C5-C4-S4	-40.64	115.19	124.76
3	B	801	PTT	C25-C24-S24	-37.29	115.98	124.76
3	C	802	PTT	C25-C24-S24	-36.49	116.17	124.76
3	D	803	PTT	C25-C24-S24	-36.35	116.20	124.76
3	C	802	PTT	C5-C4-S4	-33.11	116.97	124.76
3	A	800	PTT	C25-C24-S24	-22.67	119.42	124.76
3	B	801	PTT	C21-C22-C23	-11.87	96.86	111.33
3	B	801	PTT	C3-C4-S4	9.43	125.28	119.19
3	A	800	PTT	C3-C4-S4	9.30	125.20	119.19
3	D	803	PTT	O2-C14-N13	8.93	120.85	109.22
3	D	803	PTT	C21-C22-C23	-8.90	100.48	111.33
3	C	802	PTT	C23-C24-S24	8.69	124.80	119.19
3	D	803	PTT	C14-C5-N6	-7.77	98.55	108.44
3	A	800	PTT	O22-C34-C25	-7.42	99.40	109.50
3	C	802	PTT	C3-C4-S4	7.34	123.93	119.19
3	A	800	PTT	C23-C24-S24	6.22	123.21	119.19
3	C	802	PTT	O2-C14-C5	-6.00	101.34	109.50
3	A	800	PTT	O22-C34-N33	5.88	116.88	109.22
3	D	803	PTT	C3-C4-S4	5.75	122.90	119.19
3	D	803	PTT	C10-N9-C8	5.63	123.82	115.94
3	A	800	PTT	C21-C22-C23	-5.22	104.96	111.33
3	A	800	PTT	C10-N9-C8	4.97	122.90	115.94
3	C	802	PTT	O22-C34-C25	-4.90	102.84	109.50
3	C	802	PTT	C14-C5-N6	4.73	114.46	108.44
3	D	803	PTT	C23-C24-S24	4.57	122.14	119.19
3	C	802	PTT	C34-O22-C22	4.54	120.91	112.03
3	C	802	PTT	C1-C2-C3	-4.36	106.01	111.33
3	B	801	PTT	C1-C2-C3	-4.35	106.03	111.33
3	B	801	PTT	C10-N9-C8	4.29	121.94	115.94
3	A	800	PTT	C34-O22-C22	4.26	120.36	112.03
3	D	803	PTT	O2-C2-C1	-4.20	97.99	108.81
3	C	802	PTT	O22-C22-C21	4.13	119.46	108.81
3	D	803	PTT	N11-C10-N9	-4.04	118.65	125.55
3	B	801	PTT	O22-C34-C25	-3.93	104.15	109.50
3	B	801	PTT	C30-N31-C32	3.92	123.18	117.61
3	C	802	PTT	C32-C27-N26	3.89	123.83	118.50
3	C	802	PTT	C10-N9-C8	3.88	121.38	115.94
3	B	801	PTT	C34-C25-N26	3.81	113.28	108.44
3	A	800	PTT	O2-C2-C1	-3.80	99.02	108.81
3	B	801	PTT	C23-C24-S24	3.75	121.61	119.19
3	C	802	PTT	N11-C10-N9	-3.64	119.33	125.55
3	B	801	PTT	N11-C10-N9	-3.58	119.44	125.55

Continued on next page...

Continued from previous page...

Mol	Chain	Res	Type	Atoms	Z	Observed(°)	Ideal(°)
3	B	801	PTT	C5-C14-N13	3.53	114.83	110.01
3	C	802	PTT	C21-C22-C23	-3.52	107.03	111.33
3	B	801	PTT	C27-C28-N29	3.50	123.04	114.06
3	B	801	PTT	C34-O22-C22	3.50	118.88	112.03
3	C	802	PTT	C14-C5-C4	3.48	115.01	109.14
3	C	802	PTT	C10-N11-C12	3.47	122.53	114.63
3	C	802	PTT	N10-C10-N9	3.44	123.13	117.19
3	A	800	PTT	C4-C3-S3	3.42	121.40	119.19
3	B	801	PTT	C22-C23-C24	-3.38	118.50	124.32
3	B	801	PTT	C24-C25-N26	-3.37	104.34	111.32
3	D	803	PTT	N10-C10-N9	3.34	122.96	117.19
3	A	800	PTT	N30-C30-N29	3.34	121.53	117.86
3	A	800	PTT	N11-C10-N9	-3.27	119.96	125.55
3	D	803	PTT	C34-O22-C22	3.27	118.42	112.03
3	C	802	PTT	C24-C25-N26	3.26	118.09	111.32
3	D	803	PTT	C8-C7-N6	3.25	124.31	119.52
3	D	803	PTT	C1-C2-C3	-3.24	107.37	111.33
3	D	803	PTT	O22-C34-N33	-3.21	105.05	109.22
3	C	802	PTT	C24-C23-S23	3.10	121.19	119.19
3	D	803	PTT	O22-C34-C25	3.09	113.71	109.50
3	B	801	PTT	C28-C27-N26	3.07	123.57	119.10
3	B	801	PTT	C12-N13-C14	-3.07	118.59	124.01
3	D	803	PTT	C34-C25-C24	-3.03	104.02	109.14
3	D	803	PTT	C32-C27-N26	3.02	122.64	118.50
3	B	801	PTT	O22-C34-N33	2.99	113.12	109.22
3	B	801	PTT	C10-N11-C12	2.98	121.41	114.63
3	B	801	PTT	O2-C14-N13	-2.98	105.34	109.22
3	C	802	PTT	C32-N33-C34	-2.92	118.86	124.01
3	B	801	PTT	O2-C2-C3	2.90	114.82	109.37
3	C	802	PTT	N13-C12-N11	2.84	120.96	116.51
3	C	802	PTT	C34-C25-N26	2.81	112.02	108.44
3	B	801	PTT	C32-C27-N26	2.81	122.35	118.50
3	D	803	PTT	C10-N11-C12	2.80	121.00	114.63
3	D	803	PTT	C28-C27-N26	2.80	123.16	119.10
3	D	803	PTT	N13-C12-N11	2.77	120.86	116.51
3	C	802	PTT	C14-O2-C2	2.77	117.45	112.03
3	A	800	PTT	O22-C22-C23	-2.77	104.17	109.37
3	B	801	PTT	N33-C32-N31	2.75	120.82	116.51
3	A	800	PTT	C28-C27-C32	2.74	117.10	114.56
3	A	800	PTT	C24-C25-N26	2.73	116.99	111.32
3	A	800	PTT	C32-C27-N26	2.71	122.21	118.50
3	D	803	PTT	C7-C8-N9	-2.68	118.64	124.03

Continued on next page...

Continued from previous page...

Mol	Chain	Res	Type	Atoms	Z	Observed(°)	Ideal(°)
3	C	802	PTT	C27-N26-C25	-2.67	111.64	118.60
3	D	803	PTT	C28-N29-C30	2.62	124.10	119.51
3	D	803	PTT	C27-N26-C25	-2.56	111.93	118.60
3	A	800	PTT	N33-C32-N31	2.54	120.49	116.51
3	A	800	PTT	O22-C22-C21	-2.49	102.38	108.81
3	B	801	PTT	N10-C10-N9	2.49	121.49	117.19
3	C	802	PTT	C8-C7-N6	2.48	123.18	119.52
3	B	801	PTT	C24-C23-S23	2.46	120.78	119.19
3	B	801	PTT	N13-C12-N11	2.46	120.37	116.51
3	B	801	PTT	C2-C3-C4	-2.45	120.11	124.32
3	C	802	PTT	O8P-C21-C22	-2.40	102.31	108.53
3	A	800	PTT	C7-C8-N9	-2.39	119.22	124.03
3	B	801	PTT	N29-C30-N31	-2.38	118.44	121.78
3	A	800	PTT	C10-N11-C12	2.36	120.01	114.63
3	B	801	PTT	C25-C34-N33	-2.30	106.86	110.01
3	C	802	PTT	C7-C8-N9	-2.25	119.50	124.03
3	A	800	PTT	C1-C2-C3	-2.24	108.59	111.33
3	D	803	PTT	C12-N13-C14	-2.22	120.09	124.01
3	B	801	PTT	O2-C14-C5	2.20	112.50	109.50
3	C	802	PTT	C5-C4-C3	-2.19	117.06	123.10
3	D	803	PTT	O2-C14-C5	2.17	112.45	109.50
3	A	800	PTT	C25-C24-C23	-2.14	117.20	123.10
3	B	801	PTT	C7-C8-N9	-2.12	119.77	124.03
3	D	803	PTT	C7-N6-C5	-2.09	113.15	118.60
3	C	802	PTT	C22-C23-C24	-2.08	120.74	124.32
3	A	800	PTT	C14-C5-C4	2.06	112.62	109.14
3	C	802	PTT	C4-C5-N6	-2.02	107.13	111.32

There are no chirality outliers.

There are no torsion outliers.

There are no ring outliers.

5.7 Other polymers ⓘ

There are no such residues in this entry.

5.8 Polymer linkage issues

There are no chain breaks in this entry.

6 Fit of model and data ⓘ

6.1 Protein, DNA and RNA chains ⓘ

EDS was not executed - this section will therefore be empty.

6.2 Non-standard residues in protein, DNA, RNA chains ⓘ

EDS was not executed - this section will therefore be empty.

6.3 Carbohydrates ⓘ

EDS was not executed - this section will therefore be empty.

6.4 Ligands ⓘ

EDS was not executed - this section will therefore be empty.

6.5 Other polymers ⓘ

EDS was not executed - this section will therefore be empty.