



# Full wwPDB X-ray Structure Validation Report

Feb 26, 2014 – 06:40 PM GMT

PDB ID : 2B3B  
Title : Thermus thermophilus Glucose/Galactose Binding Protein With Bound Glucose  
Authors : Cuneo, M.J.; Changela, A.; Warren, J.J.; Beese, L.S.; Hellinga, H.W.  
Deposited on : 2005-09-20  
Resolution : 1.95 Å(reported)

This is a full wwPDB validation report for a publicly released PDB entry.  
We welcome your comments at [validation@mail.wwpdb.org](mailto:validation@mail.wwpdb.org)  
A user guide is available at <http://wwpdb.org/ValidationPDFNotes.html>

---

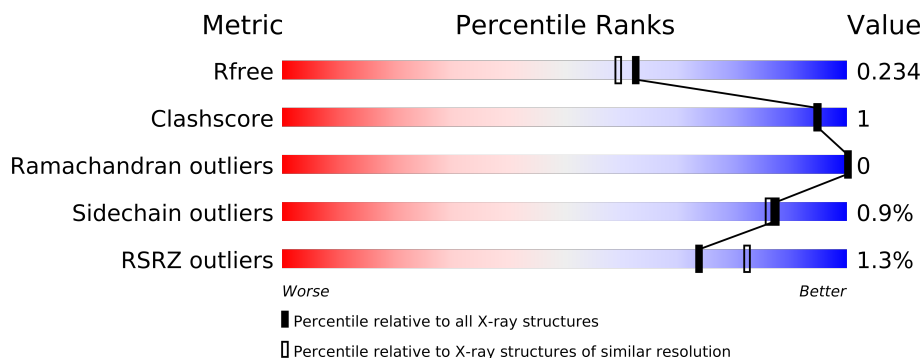
The following versions of software and data (see [references](#)) were used in the production of this report:

MolProbity : 4.02b-467  
Mogul : 1.15 2013  
Xtriage (Phenix) : dev-1323  
EDS : stable22639  
Percentile statistics : 21963  
Refmac : 5.8.0049  
CCP4 : 6.3.0 (Settle)  
Ideal geometry (proteins) : Engh & Huber (2001)  
Ideal geometry (DNA, RNA) : Parkinson et. al. (1996)  
Validation Pipeline (wwPDB-VP) : stable22683

# 1 Overall quality at a glance

The reported resolution of this entry is 1.95 Å.

Percentile scores (ranging between 0-100) for global validation metrics of the entry are shown in the following graphic. The table shows the number of entries on which the scores are based.



Metric	Whole archive (#Entries)	Similar resolution (#Entries, resolution range(Å))
$R_{free}$	66092	1321 (1.96-1.96)
Clashscore	79885	1488 (1.96-1.96)
Ramachandran outliers	78287	1475 (1.96-1.96)
Sidechain outliers	78261	1475 (1.96-1.96)
RSRZ outliers	66119	1321 (1.96-1.96)

The table below summarises the geometric issues observed across the polymeric chains and their fit to the electron density. The red, orange, yellow and green segments on the lower bar indicate the fraction of residues that contain outliers for  $\geq 3$ , 2, 1 and 0 types of geometric quality criteria. The upper red bar (where present) indicates the fraction of residues that have poor fit to the electron density.

Mol	Chain	Length	Quality of chain
1	A	400	
1	B	400	
1	C	400	
1	D	400	
1	E	400	
1	F	400	

## 2 Entry composition

There are 4 unique types of molecules in this entry. The entry contains 20217 atoms, of which 0 are hydrogen and 0 are deuterium.

In the tables below, the ZeroOcc column contains the number of atoms modelled with zero occupancy, the AltConf column contains the number of residues with at least one atom in alternate conformation and the Trace column contains the number of residues modelled with at most 2 atoms.

- Molecule 1 is a protein called glucose-binding protein.

Mol	Chain	Residues	Atoms					ZeroOcc	AltConf	Trace
1	A	392	Total	C	N	O	S	0	0	0
			3036	1942	535	545	14			
1	B	391	Total	C	N	O	S	0	0	0
			3028	1936	534	544	14			
1	C	392	Total	C	N	O	S	0	0	0
			3036	1942	535	545	14			
1	D	392	Total	C	N	O	S	0	0	0
			3036	1942	535	545	14			
1	E	392	Total	C	N	O	S	0	0	0
			3036	1942	535	545	14			
1	F	392	Total	C	N	O	S	0	0	0
			3036	1942	535	545	14			

There are 66 discrepancies between the modelled and reference sequences:

Chain	Residue	Modelled	Actual	Comment	Reference
A	1	MET	-	INITIATING METHIONINE	UNP Q72KX2
A	133	GLY	GLU	SEE REMARK 999	UNP Q72KX2
A	144	LYS	GLU	SEE REMARK 999	UNP Q72KX2
A	240	ILE	VAL	SEE REMARK 999	UNP Q72KX2
A	308	SER	PHE	SEE REMARK 999	UNP Q72KX2
A	395	HIS	-	EXPRESSION TAG	UNP Q72KX2
A	396	HIS	-	EXPRESSION TAG	UNP Q72KX2
A	397	HIS	-	EXPRESSION TAG	UNP Q72KX2
A	398	HIS	-	EXPRESSION TAG	UNP Q72KX2
A	399	HIS	-	EXPRESSION TAG	UNP Q72KX2
A	400	HIS	-	EXPRESSION TAG	UNP Q72KX2
B	1	MET	-	INITIATING METHIONINE	UNP Q72KX2
B	133	GLY	GLU	SEE REMARK 999	UNP Q72KX2
B	144	LYS	GLU	SEE REMARK 999	UNP Q72KX2
B	240	ILE	VAL	SEE REMARK 999	UNP Q72KX2
B	308	SER	PHE	SEE REMARK 999	UNP Q72KX2
B	395	HIS	-	EXPRESSION TAG	UNP Q72KX2

*Continued on next page...*

*Continued from previous page...*

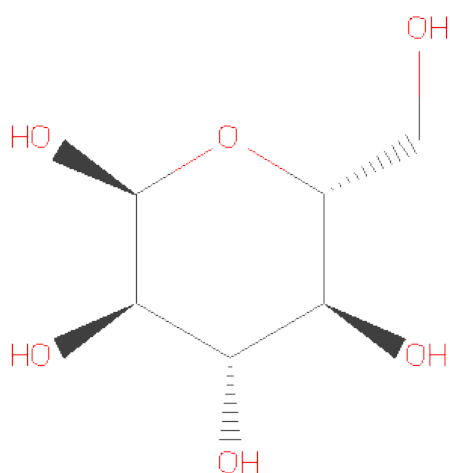
Chain	Residue	Modelled	Actual	Comment	Reference
B	396	HIS	-	EXPRESSION TAG	UNP Q72KX2
B	397	HIS	-	EXPRESSION TAG	UNP Q72KX2
B	398	HIS	-	EXPRESSION TAG	UNP Q72KX2
B	399	HIS	-	EXPRESSION TAG	UNP Q72KX2
B	400	HIS	-	EXPRESSION TAG	UNP Q72KX2
C	1	MET	-	INITIATING METHIONINE	UNP Q72KX2
C	133	GLY	GLU	SEE REMARK 999	UNP Q72KX2
C	144	LYS	GLU	SEE REMARK 999	UNP Q72KX2
C	240	ILE	VAL	SEE REMARK 999	UNP Q72KX2
C	308	SER	PHE	SEE REMARK 999	UNP Q72KX2
C	395	HIS	-	EXPRESSION TAG	UNP Q72KX2
C	396	HIS	-	EXPRESSION TAG	UNP Q72KX2
C	397	HIS	-	EXPRESSION TAG	UNP Q72KX2
C	398	HIS	-	EXPRESSION TAG	UNP Q72KX2
C	399	HIS	-	EXPRESSION TAG	UNP Q72KX2
C	400	HIS	-	EXPRESSION TAG	UNP Q72KX2
D	1	MET	-	INITIATING METHIONINE	UNP Q72KX2
D	133	GLY	GLU	SEE REMARK 999	UNP Q72KX2
D	144	LYS	GLU	SEE REMARK 999	UNP Q72KX2
D	240	ILE	VAL	SEE REMARK 999	UNP Q72KX2
D	308	SER	PHE	SEE REMARK 999	UNP Q72KX2
D	395	HIS	-	EXPRESSION TAG	UNP Q72KX2
D	396	HIS	-	EXPRESSION TAG	UNP Q72KX2
D	397	HIS	-	EXPRESSION TAG	UNP Q72KX2
D	398	HIS	-	EXPRESSION TAG	UNP Q72KX2
D	399	HIS	-	EXPRESSION TAG	UNP Q72KX2
D	400	HIS	-	EXPRESSION TAG	UNP Q72KX2
E	1	MET	-	INITIATING METHIONINE	UNP Q72KX2
E	133	GLY	GLU	SEE REMARK 999	UNP Q72KX2
E	144	LYS	GLU	SEE REMARK 999	UNP Q72KX2
E	240	ILE	VAL	SEE REMARK 999	UNP Q72KX2
E	308	SER	PHE	SEE REMARK 999	UNP Q72KX2
E	395	HIS	-	EXPRESSION TAG	UNP Q72KX2
E	396	HIS	-	EXPRESSION TAG	UNP Q72KX2
E	397	HIS	-	EXPRESSION TAG	UNP Q72KX2
E	398	HIS	-	EXPRESSION TAG	UNP Q72KX2
E	399	HIS	-	EXPRESSION TAG	UNP Q72KX2
E	400	HIS	-	EXPRESSION TAG	UNP Q72KX2
F	1	MET	-	INITIATING METHIONINE	UNP Q72KX2
F	133	GLY	GLU	SEE REMARK 999	UNP Q72KX2
F	144	LYS	GLU	SEE REMARK 999	UNP Q72KX2
F	240	ILE	VAL	SEE REMARK 999	UNP Q72KX2

*Continued on next page...*

Continued from previous page...

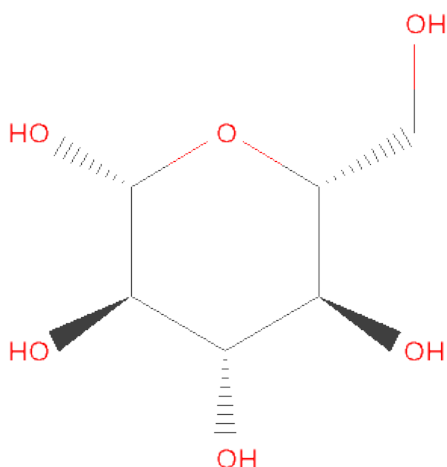
Chain	Residue	Modelled	Actual	Comment	Reference
F	308	SER	PHE	SEE REMARK 999	UNP Q72KX2
F	395	HIS	-	EXPRESSION TAG	UNP Q72KX2
F	396	HIS	-	EXPRESSION TAG	UNP Q72KX2
F	397	HIS	-	EXPRESSION TAG	UNP Q72KX2
F	398	HIS	-	EXPRESSION TAG	UNP Q72KX2
F	399	HIS	-	EXPRESSION TAG	UNP Q72KX2
F	400	HIS	-	EXPRESSION TAG	UNP Q72KX2

- Molecule 2 is SUGAR (GLUCOSE) (three-letter code: GLC) (formula: C<sub>6</sub>H<sub>12</sub>O<sub>6</sub>).



Mol	Chain	Residues	Atoms			ZeroOcc	AltConf
2	A	1	Total	C	O	0	0
			12	6	6		
2	B	1	Total	C	O	0	0
			12	6	6		
2	E	1	Total	C	O	0	0
			12	6	6		
2	F	1	Total	C	O	0	0
			12	6	6		

- Molecule 3 is SUGAR (BETA-D-GLUCOSE) (three-letter code: BGC) (formula: C<sub>6</sub>H<sub>12</sub>O<sub>6</sub>).



Mol	Chain	Residues	Atoms			ZeroOcc	AltConf
3	C	1	Total	C	O	0	0
			12	6	6		
3	D	1	Total	C	O	0	0
			12	6	6		

- Molecule 4 is water.

Mol	Chain	Residues	Atoms		ZeroOcc	AltConf
4	A	302	Total	O	0	0
			302	302		
4	B	341	Total	O	0	0
			341	341		
4	C	315	Total	O	0	0
			315	315		
4	D	326	Total	O	0	0
			326	326		
4	E	325	Total	O	0	0
			325	325		
4	F	328	Total	O	0	0
			328	328		

### 3 Residue-property plots

These plots are drawn for all protein, RNA and DNA chains in the entry. The first graphic for a chain summarises the proportions of errors displayed in the second graphic. The second graphic shows the sequence view annotated by issues in geometry and electron density. Residues are color-coded according to the number of geometric quality criteria for which they contain at least one outlier: green = 0, yellow = 1, orange = 2 and red = 3 or more. A red dot above a residue indicates a poor fit to the electron density ( $RSRZ > 2$ ). Stretches of 2 or more consecutive residues without any outlier are shown as a green connector. Residues present in the sample, but not in the model, are shown in grey.

- Molecule 1: glucose-binding protein

Chain A: 



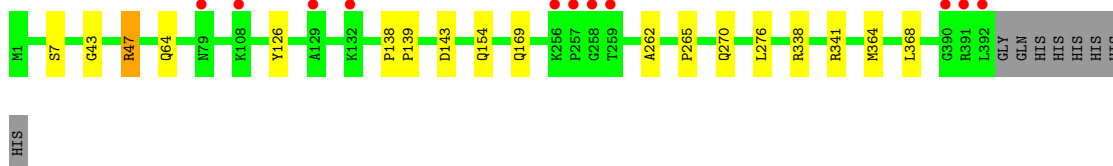
- Molecule 1: glucose-binding protein

Chain B: 



- Molecule 1: glucose-binding protein

Chain C: 



- Molecule 1: glucose-binding protein

Chain D: 



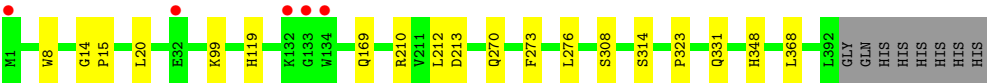
- Molecule 1: glucose-binding protein

Chain E: 



- Molecule 1: glucose-binding protein

Chain F: 





## 4 Data and refinement statistics

Property	Value	Source
Space group	P 21 21 21	Depositor
Cell constants a, b, c, $\alpha$ , $\beta$ , $\gamma$	121.64Å 134.87Å 159.55Å 90.00° 90.00° 90.00°	Depositor
Resolution (Å)	50.00 – 1.95 49.48 – 1.95	Depositor EDS
% Data completeness (in resolution range)	95.6 (50.00-1.95) 95.6 (49.48-1.95)	Depositor EDS
$R_{merge}$	0.09	Depositor
$R_{sym}$	(Not available)	Depositor
$\langle I/\sigma(I) \rangle$ <sup>1</sup>	2.08 (at 1.95Å)	Xtriage
Refinement program	REFMAC 5.2.0005	Depositor
R, $R_{free}$	0.185 , 0.225 0.194 , 0.234	Depositor DCC
$R_{free}$ test set	9120 reflections (5.29%)	DCC
Wilson B-factor (Å <sup>2</sup> )	24.8	Xtriage
Anisotropy	0.225	Xtriage
Bulk solvent $k_{sol}$ (e/Å <sup>3</sup> ), $B_{sol}$ (Å <sup>2</sup> )	0.36 , 39.4	EDS
Estimated twinning fraction	No twinning to report.	Xtriage
L-test for twinning	$\langle  L  \rangle = 0.50$ , $\langle L^2 \rangle = 0.34$	Xtriage
Outliers	2 of 181476 reflections (0.001%)	Xtriage
$F_o, F_c$ correlation	0.96	EDS
Total number of atoms	20217	wwPDB-VP
Average B, all atoms (Å <sup>2</sup> )	26.0	wwPDB-VP

Xtriage's analysis on translational NCS is as follows: *The analyses of the Patterson function reveals a significant off-origin peak that is 75.09 % of the origin peak, indicating pseudo translational symmetry. The chance of finding a peak of this or larger height randomly in a structure without pseudo translational symmetry is equal to 1.3501e-06. The detected translational NCS is most likely also responsible for the elevated intensity ratio.*

<sup>1</sup>Intensities estimated from amplitudes.

## 5 Model quality

### 5.1 Standard geometry

Bond lengths and bond angles in the following residue types are not validated in this section: GLC, BGC

The Z score for a bond length (or angle) is the number of standard deviations the observed value is removed from the expected value. A bond length (or angle) with  $|Z| > 5$  is considered an outlier worth inspection. RMSZ is the root-mean-square of all Z scores of the bond lengths (or angles).

Mol	Chain	Bond lengths		Bond angles	
		RMSZ	# $ Z  > 5$	RMSZ	# $ Z  > 5$
1	A	0.61	0/3116	0.68	1/4235 (0.0%)
1	B	0.59	0/3108	0.69	4/4224 (0.1%)
1	C	0.60	0/3116	0.67	2/4235 (0.0%)
1	D	0.61	0/3116	0.68	0/4235
1	E	0.59	0/3116	0.68	1/4235 (0.0%)
1	F	0.59	0/3116	0.69	1/4235 (0.0%)
All	All	0.60	0/18688	0.68	9/25399 (0.0%)

There are no bond length outliers.

All (9) bond angle outliers are listed below:

Mol	Chain	Res	Type	Atoms	Z	Observed(°)	Ideal(°)
1	E	80	ARG	NE-CZ-NH1	6.69	123.65	120.30
1	B	297	ARG	NE-CZ-NH1	6.08	123.34	120.30
1	B	297	ARG	NE-CZ-NH2	-5.86	117.37	120.30
1	C	47	ARG	NE-CZ-NH1	5.78	123.19	120.30
1	F	210	ARG	NE-CZ-NH2	-5.68	117.46	120.30
1	A	218	ASP	CB-CG-OD1	5.61	123.35	118.30
1	C	47	ARG	NE-CZ-NH2	-5.57	117.52	120.30
1	B	47	ARG	NE-CZ-NH2	-5.49	117.56	120.30
1	B	47	ARG	NE-CZ-NH1	5.32	122.96	120.30

There are no chirality outliers.

There are no planarity outliers.

### 5.2 Close contacts

In the following table, the Non-H and H(model) columns list the number of non-hydrogen atoms and hydrogen atoms in the chain respectively. The H(added) column lists the number of hydrogens

added by MolProbity. The Clashes column lists the number of clashes within the asymmetric unit, and the number in parentheses is this value normalized per 1000 atoms of the molecule in the chain. The Symm-Clashes column gives symmetry related clashes, in the same way as for the Clashes column.

Mol	Chain	Non-H	H(model)	H(added)	Clashes	Symm-Clashes
1	A	3036	0	3012	8	0
1	B	3028	0	3001	11	0
1	C	3036	0	3012	10	0
1	D	3036	0	3012	6	0
1	E	3036	0	3012	7	0
1	F	3036	0	3012	12	0
2	A	12	0	12	2	0
2	B	12	0	12	2	0
2	E	12	0	12	1	0
2	F	12	0	12	5	0
3	C	12	0	12	0	0
3	D	12	0	12	0	0
4	A	302	0	0	0	0
4	B	341	0	0	2	0
4	C	315	0	0	1	0
4	D	326	0	0	0	0
4	E	325	0	0	2	0
4	F	328	0	0	1	0
All	All	20217	0	18133	52	0

Clashscore is defined as the number of clashes calculated for the entry per 1000 atoms (including hydrogens) of the entry. The overall clashscore for this entry is 1.

All (52) close contacts within the same asymmetric unit are listed below.

Atom-1	Atom-2	Distance(Å)	Clash(Å)
1:F:169:GLN:OE1	1:F:368:LEU:HD11	1.62	0.98
1:C:169:GLN:OE1	1:C:368:LEU:HD11	1.91	0.71
1:D:47:ARG:HD3	1:D:354:GLU:OE2	1.95	0.67
1:C:364:MET:O	1:C:368:LEU:HG	2.04	0.57
1:A:348:HIS:HD1	2:A:2605:GLC:HO1	1.50	0.57
1:E:348:HIS:ND1	2:E:2609:GLC:O1	2.40	0.55
1:F:20:LEU:HG	1:F:308:SER:HB3	1.89	0.54
1:A:20:LEU:HG	1:A:308:SER:HB3	1.90	0.54
1:A:34:ILE:HG12	1:C:154:GLN:HA	1.91	0.51
1:C:43:GLY:O	1:C:47:ARG:HG3	2.11	0.51
1:F:270:GLN:H	1:F:270:GLN:CD	2.14	0.50
1:D:20:LEU:HG	1:D:308:SER:HB3	1.93	0.50
1:F:8:TRP:CZ2	2:F:2610:GLC:H1	2.46	0.50

*Continued on next page...*

*Continued from previous page...*

Atom-1	Atom-2	Distance(Å)	Clash(Å)
1:A:119:HIS:CE1	1:A:314:SER:HB3	2.48	0.49
1:F:119:HIS:CE1	1:F:314:SER:HB3	2.48	0.49
1:F:8:TRP:HE1	2:F:2610:GLC:H1	1.77	0.48
1:A:363:VAL:O	1:A:366:ILE:HG13	2.13	0.48
1:A:8:TRP:CZ2	2:A:2605:GLC:H1	2.49	0.47
1:E:54:MET:O	1:E:80:ARG:NH2	2.47	0.47
1:B:169:GLN:OE1	1:B:368:LEU:HD11	2.13	0.47
1:D:14:GLY:N	1:D:15:PRO:CD	2.78	0.47
1:B:386:GLN:NE2	4:B:2899:HOH:O	2.48	0.47
1:E:94:LEU:CD1	1:E:95:GLN:HG3	2.45	0.46
1:D:126:TYR:CE1	1:D:262:ALA:HB3	2.50	0.46
1:B:126:TYR:CD1	1:B:131:LEU:HD22	2.51	0.46
1:B:300:GLY:O	1:B:318:ARG:HD2	2.16	0.46
1:A:127:LEU:HD13	1:A:231:VAL:HG12	1.98	0.46
1:F:348:HIS:ND1	2:F:2610:GLC:O1	2.46	0.44
1:E:155:LYS:NZ	4:E:2923:HOH:O	2.21	0.44
1:C:143:ASP:OD2	1:D:369:GLN:NE2	2.50	0.44
1:B:34:ILE:N	1:B:34:ILE:HD12	2.32	0.44
1:F:99:LYS:HG3	4:F:2854:HOH:O	2.18	0.44
1:C:265:PRO:HG2	1:C:270:GLN:HG2	2.00	0.43
1:B:348:HIS:ND1	2:B:2606:GLC:O1	2.50	0.43
1:A:14:GLY:N	1:A:15:PRO:CD	2.81	0.43
1:E:257:PRO:HB2	1:E:328:ALA:HB3	2.00	0.43
1:F:14:GLY:N	1:F:15:PRO:CD	2.82	0.43
1:B:335:ARG:HG2	4:B:2795:HOH:O	2.18	0.42
1:F:323:PRO:O	1:F:331:GLN:NE2	2.47	0.42
1:F:8:TRP:NE1	2:F:2610:GLC:H1	2.35	0.42
1:B:119:HIS:CE1	1:B:314:SER:HB3	2.55	0.41
1:C:138:PRO:HA	1:C:139:PRO:HD2	1.97	0.41
1:E:25:LYS:HE2	4:E:2673:HOH:O	2.20	0.41
1:C:338:ARG:NE	4:C:2751:HOH:O	2.53	0.41
1:B:364:MET:O	1:B:368:LEU:HG	2.21	0.41
1:F:8:TRP:HZ2	2:F:2610:GLC:H1	1.86	0.41
1:B:8:TRP:HE1	2:B:2606:GLC:H1	1.85	0.41
1:C:7:SER:HB2	1:C:64:GLN:OE1	2.21	0.41
1:C:126:TYR:CE1	1:C:262:ALA:HB3	2.56	0.40
1:D:72:ILE:HA	1:D:76:VAL:HB	2.04	0.40
1:B:149:CYS:O	1:B:153:LYS:HG3	2.21	0.40
1:E:94:LEU:HD12	1:E:95:GLN:CG	2.52	0.40

There are no symmetry-related clashes.

## 5.3 Torsion angles

### 5.3.1 Protein backbone ⓘ

In the following table, the Percentiles column shows the percent Ramachandran outliers of the chain as a percentile score with respect to all X-ray entries followed by that with respect to entries of similar resolution. The Analysed column shows the number of residues for which the backbone conformation was analysed, and the total number of residues.

Mol	Chain	Analysed	Favoured	Allowed	Outliers	Percentiles	
1	A	390/400 (98%)	386 (99%)	4 (1%)	0	100	100
1	B	389/400 (97%)	383 (98%)	6 (2%)	0	100	100
1	C	390/400 (98%)	383 (98%)	7 (2%)	0	100	100
1	D	390/400 (98%)	384 (98%)	6 (2%)	0	100	100
1	E	390/400 (98%)	385 (99%)	5 (1%)	0	100	100
1	F	390/400 (98%)	386 (99%)	4 (1%)	0	100	100
All	All	2339/2400 (98%)	2307 (99%)	32 (1%)	0	100	100

There are no Ramachandran outliers to report.

### 5.3.2 Protein sidechains ⓘ

In the following table, the Percentiles column shows the percent sidechain outliers of the chain as a percentile score with respect to all X-ray entries followed by that with respect to entries of similar resolution. The Analysed column shows the number of residues for which the sidechain conformation was analysed, and the total number of residues.

Mol	Chain	Analysed	Rotameric	Outliers	Percentiles	
1	A	309/316 (98%)	307 (99%)	2 (1%)	92	92
1	B	308/316 (98%)	307 (100%)	1 (0%)	96	96
1	C	309/316 (98%)	307 (99%)	2 (1%)	92	92
1	D	309/316 (98%)	306 (99%)	3 (1%)	85	84
1	E	309/316 (98%)	305 (99%)	4 (1%)	80	76
1	F	309/316 (98%)	305 (99%)	4 (1%)	80	76
All	All	1853/1896 (98%)	1837 (99%)	16 (1%)	87	86

All (16) residues with a non-rotameric sidechain are listed below:

Mol	Chain	Res	Type
1	A	273	PHE
1	A	276	LEU
1	B	276	LEU
1	C	276	LEU
1	C	341	ARG
1	D	1	MET
1	D	276	LEU
1	D	368	LEU
1	E	52	THR
1	E	213	ASP
1	E	276	LEU
1	E	341	ARG
1	F	212	LEU
1	F	213	ASP
1	F	273	PHE
1	F	276	LEU

Some sidechains can be flipped to improve hydrogen bonding and reduce clashes. All (1) such sidechains are listed below:

Mol	Chain	Res	Type
1	D	369	GLN

### 5.3.3 RNA ⓘ

There are no RNA chains in this entry.

## 5.4 Non-standard residues in protein, DNA, RNA chains ⓘ

There are no non-standard protein/DNA/RNA residues in this entry.

## 5.5 Carbohydrates ⓘ

There are no carbohydrates in this entry.

## 5.6 Ligand geometry ⓘ

6 ligands are modelled in this entry.

In the following table, the Counts columns list the number of bonds (or angles) for which Mogul statistics could be retrieved, the number of bonds (or angles) that are observed in the model and

the number of bonds (or angles) that are defined in the chemical component dictionary. The Link column lists molecule types, if any, to which the group is linked. The Z score for a bond length (or angle) is the number of standard deviations the observed value is removed from the expected value. A bond length (or angle) with  $|Z| > 2$  is considered an outlier worth inspection. RMSZ is the root-mean-square of all Z scores of the bond lengths (or angles).

Mol	Type	Chain	Res	Link	Bond lengths			Bond angles		
					Counts	RMSZ	# Z  > 2	Counts	RMSZ	# Z  > 2
2	GLC	A	2605	-	12,12,12	0.82	1 (8%)	17,17,17	2.38	6 (35%)
2	GLC	B	2606	-	12,12,12	0.70	0	17,17,17	2.63	7 (41%)
3	BGC	C	2607	-	12,12,12	0.66	0	17,17,17	0.71	0
3	BGC	D	2608	-	12,12,12	0.74	0	17,17,17	0.80	0
2	GLC	E	2609	-	12,12,12	0.73	0	17,17,17	2.50	6 (35%)
2	GLC	F	2610	-	12,12,12	0.68	0	17,17,17	2.34	3 (17%)

In the following table, the Chirals column lists the number of chiral outliers, the number of chiral centers analysed, the number of these observed in the model and the number defined in the chemical component dictionary. Similar counts are reported in the Torsion and Rings columns. '-' means no outliers of that kind were identified.

Mol	Type	Chain	Res	Link	Chirals	Torsions	Rings
2	GLC	A	2605	-	-	0/2/22/22	0/1/1/1
2	GLC	B	2606	-	-	0/2/22/22	0/1/1/1
3	BGC	C	2607	-	-	0/2/22/22	0/1/1/1
3	BGC	D	2608	-	-	0/2/22/22	0/1/1/1
2	GLC	E	2609	-	-	0/2/22/22	0/1/1/1
2	GLC	F	2610	-	-	0/2/22/22	0/1/1/1

All (1) bond length outliers are listed below:

Mol	Chain	Res	Type	Atoms	Z	Observed(Å)	Ideal(Å)
2	A	2605	GLC	C1-C2	2.27	1.57	1.52

All (22) bond angle outliers are listed below:

Mol	Chain	Res	Type	Atoms	Z	Observed(°)	Ideal(°)
2	E	2609	GLC	O5-C1-C2	6.89	120.54	109.86
2	A	2605	GLC	O5-C1-C2	6.31	119.64	109.86
2	B	2606	GLC	O5-C1-C2	6.15	119.39	109.86
2	F	2610	GLC	C1-O5-C5	5.79	123.77	113.40
2	F	2610	GLC	O5-C1-C2	5.35	118.15	109.86
2	B	2606	GLC	C1-O5-C5	5.34	122.95	113.40
2	E	2609	GLC	C1-O5-C5	5.14	122.60	113.40

*Continued on next page...*

*Continued from previous page...*

Mol	Chain	Res	Type	Atoms	Z	Observed(°)	Ideal(°)
2	A	2605	GLC	C1-O5-C5	4.72	121.84	113.40
2	F	2610	GLC	C1-C2-C3	3.69	116.39	110.53
2	B	2606	GLC	O2-C2-C1	3.62	117.59	109.89
2	A	2605	GLC	C1-C2-C3	3.57	116.19	110.53
2	B	2606	GLC	C1-C2-C3	3.53	116.14	110.53
2	B	2606	GLC	O5-C5-C4	2.97	115.26	109.76
2	E	2609	GLC	C1-C2-C3	2.68	114.78	110.53
2	B	2606	GLC	O1-C1-C2	2.57	116.73	109.47
2	E	2609	GLC	O2-C2-C1	2.47	115.15	109.89
2	E	2609	GLC	O5-C5-C4	2.46	114.31	109.76
2	A	2605	GLC	O1-C1-C2	2.41	116.29	109.47
2	A	2605	GLC	O2-C2-C1	2.36	114.92	109.89
2	E	2609	GLC	O3-C3-C2	-2.31	105.17	110.35
2	B	2606	GLC	O3-C3-C2	-2.28	105.25	110.35
2	A	2605	GLC	O5-C5-C4	2.12	113.69	109.76

There are no chirality outliers.

There are no torsion outliers.

There are no ring outliers.

## 5.7 Other polymers ⓘ

There are no such residues in this entry.

## 5.8 Polymer linkage issues

There are no chain breaks in this entry.



## 6 Fit of model and data ⓘ

### 6.1 Protein, DNA and RNA chains ⓘ

In the following table, the column labelled ‘#RSRZ> 2’ contains the number (and percentage) of RSRZ outliers, followed by percent RSRZ outliers for the chain as percentile scores relative to all X-ray entries and entries of similar resolution. The OWAB column contains the minimum, median, 95<sup>th</sup> percentile and maximum values of the occupancy-weighted average B-factor per residue. The column labelled ‘Q< 0.9’ lists the number of (and percentage) of residues with an average occupancy less than 0.9.

Mol	Chain	Analysed	<RSRZ>	#RSRZ>2	OWAB(Å <sup>2</sup> )	Q<0.9
1	A	392/400 (98%)	0.04	5 (1%) 74 82	15, 25, 37, 44	0
1	B	391/400 (97%)	0.06	4 (1%) 79 87	14, 23, 35, 52	0
1	C	392/400 (98%)	0.14	11 (2%) 50 58	16, 25, 38, 61	0
1	D	392/400 (98%)	-0.06	4 (1%) 79 87	16, 25, 33, 43	0
1	E	392/400 (98%)	0.04	2 (0%) 88 94	16, 26, 35, 41	0
1	F	392/400 (98%)	0.05	5 (1%) 74 82	15, 25, 38, 44	0
All	All	2351/2400 (97%)	0.05	31 (1%) 74 82	14, 25, 36, 61	0

All (31) RSRZ outliers are listed below:

Mol	Chain	Res	Type	RSRZ
1	C	392	LEU	8.6
1	E	94	LEU	5.3
1	C	391	ARG	5.1
1	B	391	ARG	4.6
1	C	258	GLY	3.3
1	F	132	LYS	3.2
1	C	390	GLY	3.2
1	C	259	THR	2.9
1	B	132	LYS	2.8
1	A	133	GLY	2.6
1	C	129	ALA	2.5
1	E	140	ARG	2.5
1	C	256	LYS	2.5
1	D	30	GLY	2.4
1	C	132	LYS	2.4
1	B	259	THR	2.3
1	A	32	GLU	2.3
1	D	203	ARG	2.3
1	F	1	MET	2.2

*Continued on next page...*

*Continued from previous page...*

Mol	Chain	Res	Type	RSRZ
1	A	136	VAL	2.2
1	C	79	ASN	2.2
1	B	256	LYS	2.2
1	D	140	ARG	2.2
1	F	134	TRP	2.1
1	C	257	PRO	2.1
1	A	129	ALA	2.1
1	D	338	ARG	2.0
1	F	32	GLU	2.0
1	C	108	LYS	2.0
1	F	133	GLY	2.0
1	A	134	TRP	2.0

## 6.2 Non-standard residues in protein, DNA, RNA chains ⓘ

There are no non-standard protein/DNA/RNA residues in this entry.

## 6.3 Carbohydrates ⓘ

There are no carbohydrates in this entry.

## 6.4 Ligands ⓘ

In the following table, the Atoms column lists the number of modelled atoms in the group and the number defined in the chemical component dictionary. LLDF column lists the quality of electron density of the group with respect to its neighbouring residues in protein, DNA or RNA chains. The B-factors column lists the minimum, median, 95<sup>th</sup> percentile and maximum values of B factors of atoms in the group. The column labelled 'Q< 0.9' lists the number of atoms with occupancy less than 0.9.

Mol	Type	Chain	Res	Atoms	RSR	LLDF	B-factors(Å <sup>2</sup> )	Q<0.9
2	GLC	A	2605	12/12	0.12	0.55	14,15,20,21	0
2	GLC	B	2606	12/12	0.11	0.34	15,17,18,19	0
2	GLC	F	2610	12/12	0.10	-0.26	14,17,18,21	0
2	GLC	E	2609	12/12	0.09	-0.36	13,17,19,21	0
3	BGC	C	2607	12/12	0.09	-0.67	12,14,15,16	0
3	BGC	D	2608	12/12	0.08	-1.56	11,15,17,19	0

## 6.5 Other polymers ⓘ

There are no such residues in this entry.