



Full wwPDB X-ray Structure Validation Report

Feb 28, 2014 – 02:00 AM GMT

PDB ID : 2B4C
Title : Crystal structure of HIV-1 JR-FL gp120 core protein containing the third variable region (V3) complexed with CD4 and the X5 antibody
Authors : Huang, C.; Tang, M.; Zhang, M.Y.; Majeed, S.; Montabana, E.; Stanfield, R.L.; Dimitrov, D.S.; Korber, B.; Sodroski, J.; Wilson, I.A.; Wyatt, R.; Kwong, P.D.
Deposited on : 2005-09-23
Resolution : 3.30 Å(reported)

This is a full wwPDB validation report for a publicly released PDB entry.
We welcome your comments at validation@mail.wwpdb.org
A user guide is available at <http://wwpdb.org/ValidationPDFNotes.html>

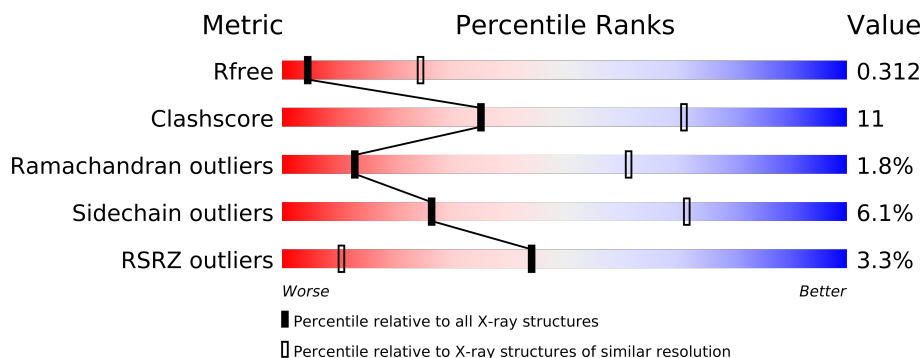
The following versions of software and data (see [references](#)) were used in the production of this report:

MolProbity : 4.02b-467
Mogul : 1.15 2013
Xtriage (Phenix) : dev-1323
EDS : stable22639
Percentile statistics : 21963
Refmac : 5.8.0049
CCP4 : 6.3.0 (Settle)
Ideal geometry (proteins) : Engh & Huber (2001)
Ideal geometry (DNA, RNA) : Parkinson et. al. (1996)
Validation Pipeline (wwPDB-VP) : stable22683

1 Overall quality at a glance

The reported resolution of this entry is 3.30 Å.

Percentile scores (ranging between 0-100) for global validation metrics of the entry are shown in the following graphic. The table shows the number of entries on which the scores are based.



Metric	Whole archive (#Entries)	Similar resolution (#Entries, resolution range(Å))
R_{free}	66092	1341 (3.40-3.20)
Clashscore	79885	1696 (3.40-3.20)
Ramachandran outliers	78287	1664 (3.40-3.20)
Sidechain outliers	78261	1662 (3.40-3.20)
RSRZ outliers	66119	1342 (3.40-3.20)

The table below summarises the geometric issues observed across the polymeric chains and their fit to the electron density. The red, orange, yellow and green segments on the lower bar indicate the fraction of residues that contain outliers for ≥ 3 , 2, 1 and 0 types of geometric quality criteria. The upper red bar (where present) indicates the fraction of residues that have poor fit to the electron density.

Mol	Chain	Length	Quality of chain
1	G	344	
2	C	181	
3	L	215	
4	H	235	

2 Entry composition

There are 9 unique types of molecules in this entry. The entry contains 7543 atoms, of which 0 are hydrogen and 0 are deuterium.

In the tables below, the ZeroOcc column contains the number of atoms modelled with zero occupancy, the AltConf column contains the number of residues with at least one atom in alternate conformation and the Trace column contains the number of residues modelled with at most 2 atoms.

- Molecule 1 is a protein called envelope glycoprotein.

Mol	Chain	Residues	Atoms					ZeroOcc	AltConf	Trace
1	G	339	Total	C	N	O	S	0	4	0
			2681	1674	477	509	21			

- Molecule 2 is a protein called T-cell surface glycoprotein CD4.

Mol	Chain	Residues	Atoms					ZeroOcc	AltConf	Trace
2	C	175	Total	C	N	O	S	0	0	0
			1363	851	239	269	4			

- Molecule 3 is a protein called anti-HIV-1 gp120 immunoglobulin X5 light chain.

Mol	Chain	Residues	Atoms					ZeroOcc	AltConf	Trace
3	L	215	Total	C	N	O	S	0	0	0
			1636	1018	280	333	5			

- Molecule 4 is a protein called anti-HIV-1 gp120 immunoglobulin X5 heavy chain.

Mol	Chain	Residues	Atoms					ZeroOcc	AltConf	Trace
4	H	233	Total	C	N	O	S	0	0	0
			1742	1098	290	346	8			

- Molecule 5 is SUGAR (N-ACETYL-D-GLUCOSAMINE) (three-letter code: NAG) (formula: $C_8H_{15}NO_6$).

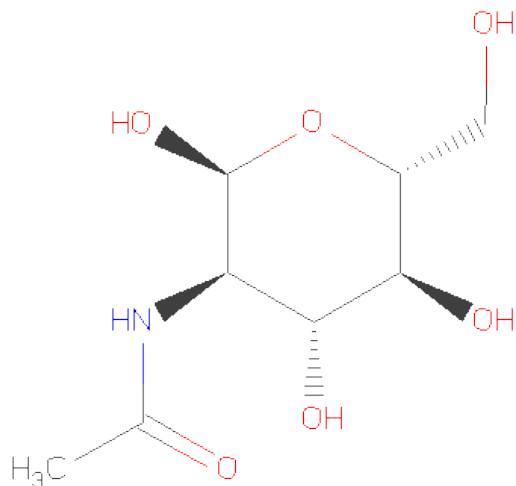


Mol	Chain	Residues	Atoms				ZeroOcc	AltConf
5	G	1	Total	C	N	O	0	0
			14	8	1	5		
5	G	1	Total	C	N	O	0	0
			14	8	1	5		

- Molecule 6 is a polymer of unknown type called SUGAR (2-MER).

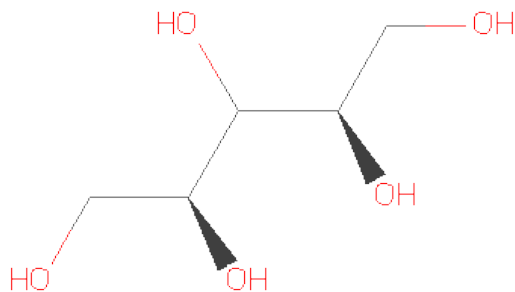
Mol	Chain	Residues	Atoms				ZeroOcc	AltConf
6	G	2	Total	C	N	O	0	0
			24	14	1	9		

- Molecule 7 is SUGAR (2-(ACETYLAMINO)-2-DEOXY-A-D-GLUCOPYRANOSE) (three-letter code: NDG) (formula: C₈H₁₅NO₆).



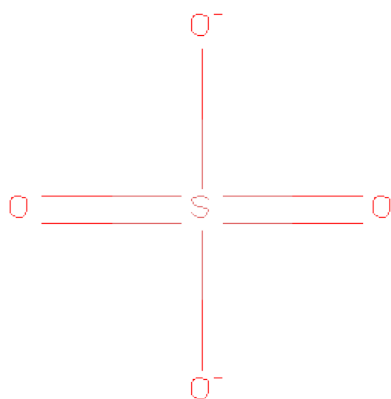
Mol	Chain	Residues	Atoms				ZeroOcc	AltConf
7	G	1	Total	C	N	O	0	0
			14	8	1	5		

- Molecule 8 is D-XYLITOL (three-letter code: XYL) (formula: $C_5H_{12}O_5$).



Mol	Chain	Residues	Atoms			ZeroOcc	AltConf
8	H	1	Total	C	O	0	0
			10	5	5		
8	H	1	Total	C	O	0	0
			10	5	5		
8	H	1	Total	C	O	0	0
			10	5	5		

- Molecule 9 is SULFATE ION (three-letter code: SO4) (formula: O₄S).

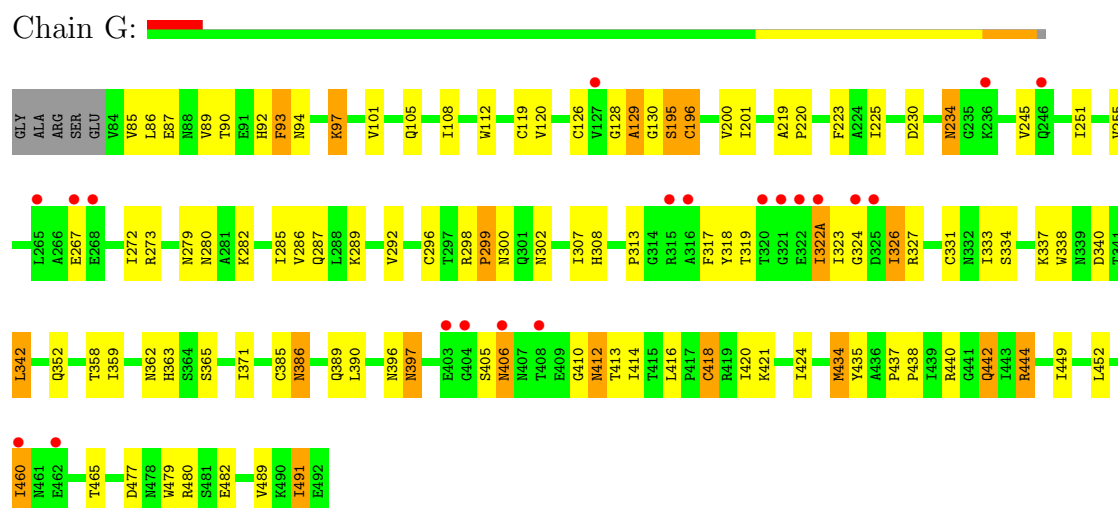


Mol	Chain	Residues	Atoms			ZeroOcc	AltConf
9	H	1	Total	O	S	0	0
			5	4	1		
9	L	1	Total	O	S	0	0
			5	4	1		
9	H	1	Total	O	S	0	0
			5	4	1		
9	H	1	Total	O	S	0	0
			5	4	1		
9	G	1	Total	O	S	0	0
			5	4	1		

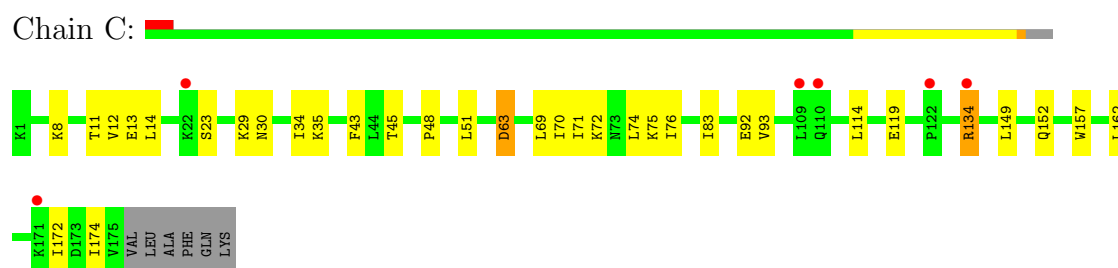
3 Residue-property plots

These plots are drawn for all protein, RNA and DNA chains in the entry. The first graphic for a chain summarises the proportions of errors displayed in the second graphic. The second graphic shows the sequence view annotated by issues in geometry and electron density. Residues are color-coded according to the number of geometric quality criteria for which they contain at least one outlier: green = 0, yellow = 1, orange = 2 and red = 3 or more. A red dot above a residue indicates a poor fit to the electron density ($RSRZ > 2$). Stretches of 2 or more consecutive residues without any outlier are shown as a green connector. Residues present in the sample, but not in the model, are shown in grey.

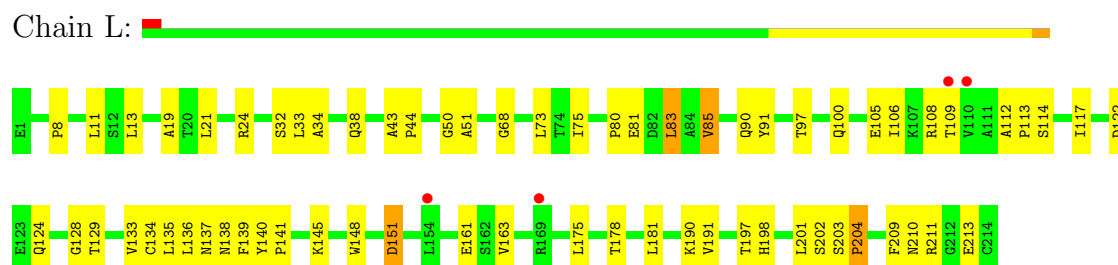
- Molecule 1: envelope glycoprotein



- Molecule 2: T-cell surface glycoprotein CD4

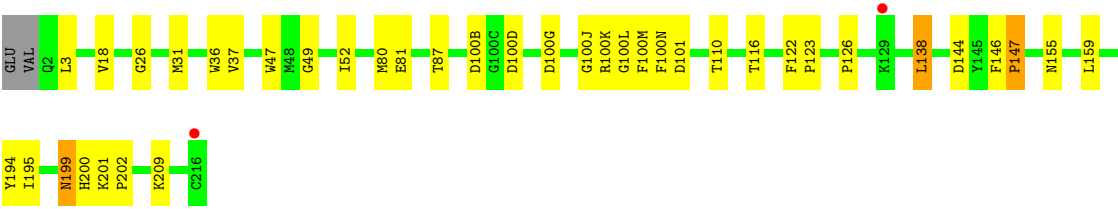


- Molecule 3: anti-HIV-1 gp120 immunoglobulin X5 light chain



- Molecule 4: anti-HIV-1 gp120 immunoglobulin X5 heavy chain





4 Data and refinement statistics

Property	Value	Source
Space group	P 6 2 2	Depositor
Cell constants a, b, c, α , β , γ	225.99Å 225.99Å 97.97Å 90.00° 90.00° 120.00°	Depositor
Resolution (Å)	20.00 – 3.30 19.88 – 3.31	Depositor EDS
% Data completeness (in resolution range)	86.2 (20.00-3.30) 86.3 (19.88-3.31)	Depositor EDS
R_{merge}	0.08	Depositor
R_{sym}	0.08	Depositor
$\langle I/\sigma(I) \rangle$ ¹	1.43 (at 3.29Å)	Xtriage
Refinement program	CNS 1.1	Depositor
R, R_{free}	0.319 , 0.349 0.294 , 0.312	Depositor DCC
R_{free} test set	1928 reflections (11.06%)	DCC
Wilson B-factor (Å ²)	134.8	Xtriage
Anisotropy	0.213	Xtriage
Bulk solvent k_{sol} (e/Å ³), B_{sol} (Å ²)	0.30 , 51.7	EDS
Estimated twinning fraction	No twinning to report.	Xtriage
L-test for twinning	$\langle L \rangle = 0.49$, $\langle L^2 \rangle = 0.32$	Xtriage
Outliers	1 of 19364 reflections (0.005%)	Xtriage
F_o, F_c correlation	0.90	EDS
Total number of atoms	7543	wwPDB-VP
Average B, all atoms (Å ²)	114.0	wwPDB-VP

Xtriage's analysis on translational NCS is as follows: *The largest off-origin peak in the Patterson function is 2.02% of the height of the origin peak. No significant pseudotranslation is detected.*

¹Intensities estimated from amplitudes.

5 Model quality

5.1 Standard geometry

Bond lengths and bond angles in the following residue types are not validated in this section: FUC, XYL, SO4, NDG, NAG

The Z score for a bond length (or angle) is the number of standard deviations the observed value is removed from the expected value. A bond length (or angle) with $|Z| > 5$ is considered an outlier worth inspection. RMSZ is the root-mean-square of all Z scores of the bond lengths (or angles).

Mol	Chain	Bond lengths		Bond angles	
		RMSZ	$\# Z > 5$	RMSZ	$\# Z > 5$
1	G	0.33	1/2734 (0.0%)	0.52	0/3701
2	C	0.26	0/1382	0.53	0/1863
3	L	0.28	0/1669	0.53	0/2264
4	H	0.28	0/1788	0.53	0/2432
All	All	0.30	1/7573 (0.0%)	0.53	0/10260

All (1) bond length outliers are listed below:

Mol	Chain	Res	Type	Atoms	Z	Observed(Å)	Ideal(Å)
1	G	87	GLU	C-N	-7.20	1.17	1.34

There are no bond angle outliers.

There are no chirality outliers.

There are no planarity outliers.

5.2 Close contacts

In the following table, the Non-H and H(model) columns list the number of non-hydrogen atoms and hydrogen atoms in the chain respectively. The H(added) column lists the number of hydrogens added by MolProbity. The Clashes column lists the number of clashes within the asymmetric unit, and the number in parentheses is this value normalized per 1000 atoms of the molecule in the chain. The Symm-Clashes column gives symmetry related clashes, in the same way as for the Clashes column.

Mol	Chain	Non-H	H(model)	H(added)	Clashes	Symm-Clashes
1	G	2681	0	2628	79	0
2	C	1363	0	1389	28	0
3	L	1636	0	1591	38	0
4	H	1742	0	1662	22	0

Continued on next page...

Continued from previous page...

Mol	Chain	Non-H	H(model)	H(added)	Clashes	Symm-Clashes
5	G	28	0	26	0	0
6	G	24	0	22	0	0
7	G	14	0	13	0	0
8	H	30	0	36	0	0
9	G	5	0	0	0	0
9	H	15	0	0	0	0
9	L	5	0	0	0	0
All	All	7543	0	7367	158	0

Clashscore is defined as the number of clashes calculated for the entry per 1000 atoms (including hydrogens) of the entry. The overall clashscore for this entry is 11.

All (158) close contacts within the same asymmetric unit are listed below.

Atom-1	Atom-2	Distance(Å)	Clash(Å)
1:G:326:ILE:HD13	1:G:326:ILE:H	1.35	0.92
4:H:126:PRO:HG3	4:H:138:LEU:HB3	1.52	0.91
1:G:371:ILE:HD13	2:C:45:THR:HG22	1.53	0.90
2:C:76:ILE:H	2:C:76:ILE:HD12	1.35	0.90
3:L:198:HIS:HB3	3:L:201:LEU:HB3	1.66	0.78
1:G:300:ASN:HD21	1:G:302:ASN:ND2	1.84	0.76
3:L:163:VAL:HG22	3:L:175:LEU:HD13	1.70	0.74
1:G:358:THR:HG23	1:G:396:ASN:HB3	1.70	0.73
1:G:371:ILE:HD11	2:C:43:PHE:HB3	1.71	0.72
1:G:251:ILE:HD12	1:G:482:GLU:HB3	1.72	0.71
1:G:491:ILE:O	1:G:491:ILE:HG23	1.93	0.68
3:L:90:GLN:HE21	3:L:97:THR:H	1.42	0.68
2:C:29:LYS:HB2	2:C:83:ILE:HD11	1.74	0.68
1:G:272:ILE:O	1:G:272:ILE:HD12	1.93	0.68
1:G:460:ILE:HD13	1:G:460:ILE:O	1.94	0.68
1:G:85:VAL:C	1:G:86:LEU:HD12	2.15	0.67
1:G:327:ARG:HH22	4:H:100(G):ASP:HB2	1.59	0.67
1:G:94:ASN:HD22	1:G:97:LYS:H	1.44	0.66
4:H:37:VAL:HG12	4:H:47:TRP:HA	1.78	0.66
1:G:327:ARG:NH2	4:H:100(G):ASP:HB2	2.10	0.66
1:G:300:ASN:HB3	1:G:442:GLN:CB	2.26	0.65
3:L:135:LEU:HD23	3:L:136:LEU:N	2.11	0.65
3:L:80:PRO:HA	3:L:106:ILE:HD13	1.77	0.65
1:G:279:ASN:HD22	1:G:282:LYS:HG2	1.61	0.64
2:C:51:LEU:HD23	2:C:71:ILE:HD12	1.79	0.64
1:G:120:VAL:HB	1:G:434:MET:HB3	1.81	0.63
3:L:108:ARG:HG2	3:L:109:THR:H	1.64	0.63
1:G:225:ILE:CD1	1:G:245:VAL:HG23	2.29	0.63

Continued on next page...

Continued from previous page...

Atom-1	Atom-2	Distance(Å)	Clash(Å)
2:C:76:ILE:H	2:C:76:ILE:CD1	2.11	0.62
3:L:198:HIS:HB3	3:L:201:LEU:CB	2.28	0.62
1:G:300:ASN:HB3	1:G:442:GLN:HB2	1.81	0.61
2:C:83:ILE:HG22	2:C:92:GLU:HG2	1.83	0.60
2:C:76:ILE:N	2:C:76:ILE:HD12	2.12	0.60
1:G:371:ILE:HD13	2:C:45:THR:CG2	2.28	0.59
4:H:195:ILE:N	4:H:195:ILE:HD12	2.18	0.59
1:G:359:ILE:N	1:G:359:ILE:HD12	2.18	0.59
1:G:225:ILE:HD11	1:G:245:VAL:HG23	1.85	0.58
1:G:108:ILE:HD13	1:G:479:TRP:CE2	2.39	0.58
1:G:389:GLN:HE21	1:G:416:LEU:HD13	1.68	0.57
1:G:389:GLN:NE2	1:G:414:ILE:HG13	2.19	0.57
3:L:83:LEU:HD12	3:L:105:GLU:HA	1.89	0.55
1:G:94:ASN:ND2	1:G:97:LYS:H	2.04	0.55
2:C:74:LEU:HD13	2:C:75:LYS:N	2.22	0.55
1:G:334:SER:HB2	1:G:337:LYS:HB2	1.87	0.54
3:L:140:TYR:HB3	3:L:141:PRO:HD3	1.88	0.54
1:G:442:GLN:NE2	1:G:444:ARG:HH11	2.05	0.54
1:G:424:ILE:HD12	1:G:435:TYR:CD1	2.41	0.54
2:C:23:SER:HB3	2:C:63:ASP:HA	1.88	0.54
1:G:326:ILE:H	1:G:326:ILE:CD1	2.14	0.54
4:H:37:VAL:HG23	4:H:37:VAL:O	2.08	0.53
2:C:14:LEU:HB2	2:C:69:LEU:HB3	1.90	0.53
3:L:114:SER:OG	3:L:137:ASN:HB3	2.08	0.53
3:L:11:LEU:HG	3:L:13:LEU:HD13	1.91	0.53
3:L:190:LYS:HA	3:L:211:ARG:HG2	1.91	0.52
3:L:134:CYS:HB2	3:L:148:TRP:CZ2	2.44	0.52
1:G:200:VAL:C	1:G:201:ILE:HD12	2.30	0.52
2:C:30:ASN:HD21	2:C:34:ILE:HB	1.75	0.52
3:L:151:ASP:HA	3:L:191:VAL:HB	1.92	0.52
2:C:8:LYS:HA	2:C:74:LEU:HD12	1.92	0.52
1:G:234:ASN:H	1:G:234:ASN:HD22	1.59	0.51
3:L:161:GLU:HB2	3:L:175:LEU:HD11	1.93	0.51
2:C:70:ILE:O	2:C:71:ILE:HD13	2.10	0.51
2:C:14:LEU:HD12	2:C:69:LEU:HD12	1.93	0.51
1:G:442:GLN:HE22	1:G:444:ARG:HH11	1.59	0.50
1:G:126:CYS:HA	1:G:196:CYS:HB3	1.93	0.50
3:L:19:ALA:HB3	3:L:75:ILE:HB	1.93	0.50
2:C:157:TRP:HB2	2:C:172:ILE:HG13	1.93	0.50
3:L:38:GLN:HB3	3:L:85:VAL:HG23	1.93	0.50
1:G:390:LEU:HG	1:G:416:LEU:HD11	1.93	0.50
1:G:410:GLY:O	1:G:412:ASN:C	2.50	0.50

Continued on next page...

Continued from previous page...

Atom-1	Atom-2	Distance(Å)	Clash(Å)
1:G:85:VAL:HG22	1:G:86:LEU:N	2.27	0.49
4:H:47:TRP:CZ2	4:H:49:GLY:HA2	2.47	0.49
1:G:89:VAL:HG22	1:G:90:THR:N	2.27	0.49
1:G:405:SER:O	1:G:406:ASN:HB2	2.11	0.49
1:G:365:SER:HB3	2:C:48:PRO:HG3	1.93	0.49
4:H:87:THR:HG23	4:H:110:THR:HA	1.95	0.49
1:G:420:ILE:HD12	1:G:420:ILE:N	2.28	0.49
1:G:385:CYS:N	1:G:418:CYS:SG	2.85	0.48
3:L:32:SER:HB2	3:L:91:TYR:CE2	2.49	0.48
1:G:412:ASN:OD1	1:G:413:THR:HG23	2.13	0.48
3:L:145:LYS:HB2	3:L:197:THR:HB	1.95	0.48
1:G:442:GLN:HE22	1:G:444:ARG:NH1	2.11	0.47
2:C:157:TRP:CE2	2:C:174:ILE:HD12	2.49	0.47
1:G:322(A):ILE:HG13	1:G:322(A):ILE:O	2.14	0.47
1:G:317:PHE:HB3	1:G:318:TYR:CD1	2.49	0.47
1:G:319:THR:HG22	1:G:319:THR:O	2.14	0.47
1:G:201:ILE:N	1:G:201:ILE:HD12	2.29	0.47
2:C:114:LEU:HB2	2:C:149:LEU:HD11	1.96	0.47
1:G:219:ALA:HA	1:G:220:PRO:HD3	1.82	0.47
1:G:331:CYS:SG	1:G:385:CYS:SG	3.12	0.47
2:C:83:ILE:HD12	2:C:83:ILE:C	2.35	0.47
3:L:91:TYR:HB2	4:H:100(L):GLY:HA3	1.97	0.46
4:H:36:TRP:CE2	4:H:80:MET:HB2	2.50	0.46
3:L:135:LEU:C	3:L:136:LEU:HD12	2.36	0.46
1:G:108:ILE:HD13	1:G:479:TRP:CZ2	2.50	0.46
3:L:136:LEU:HD22	3:L:175:LEU:HD23	1.97	0.46
3:L:190:LYS:HG2	3:L:211:ARG:HE	1.80	0.46
3:L:190:LYS:HE2	3:L:211:ARG:HH21	1.81	0.46
1:G:307:ILE:HG22	1:G:308:HIS:N	2.30	0.46
3:L:33:LEU:HD13	3:L:34:ALA:N	2.32	0.45
1:G:86:LEU:N	1:G:86:LEU:HD12	2.32	0.45
3:L:21:LEU:HD12	3:L:73:LEU:HD23	1.99	0.45
4:H:155:ASN:HD22	4:H:159:LEU:HB2	1.82	0.45
4:H:201:LYS:N	4:H:202:PRO:CD	2.80	0.45
1:G:292:VAL:HB	1:G:449:ILE:HB	1.98	0.44
3:L:112:ALA:HA	3:L:113:PRO:HD3	1.81	0.44
1:G:128:GLY:O	1:G:129:ALA:C	2.55	0.44
1:G:101:VAL:HG11	1:G:480:ARG:HG3	1.99	0.44
4:H:199:ASN:HD22	4:H:200:HIS:N	2.14	0.44
4:H:200:HIS:CE1	4:H:202:PRO:HB2	2.52	0.44
2:C:134:ARG:HG2	2:C:134:ARG:H	1.72	0.44
1:G:285:ILE:HD12	1:G:285:ILE:N	2.33	0.44

Continued on next page...

Continued from previous page...

Atom-1	Atom-2	Distance(Å)	Clash(Å)
1:G:322(A):ILE:O	1:G:324:GLY:N	2.51	0.44
4:H:52:ILE:HD11	4:H:100(J):GLY:N	2.33	0.43
1:G:307:ILE:HG23	1:G:317:PHE:O	2.17	0.43
3:L:8:PRO:HG3	3:L:11:LEU:HD13	2.00	0.43
3:L:117:ILE:HD13	3:L:209:PHE:HD2	1.84	0.43
3:L:133:VAL:HG22	3:L:178:THR:HG22	2.01	0.43
4:H:194:TYR:C	4:H:195:ILE:HD12	2.38	0.43
1:G:272:ILE:HG22	1:G:286:VAL:HG22	2.00	0.43
3:L:113:PRO:HB3	3:L:139:PHE:CD1	2.54	0.43
1:G:90:THR:HG23	1:G:90:THR:O	2.18	0.43
3:L:32:SER:HB2	3:L:91:TYR:CZ	2.53	0.43
1:G:338:TRP:O	1:G:342:LEU:HB2	2.19	0.43
1:G:225:ILE:O	1:G:225:ILE:HD12	2.18	0.43
1:G:421:LYS:HD3	4:H:100(D):ASP:CG	2.39	0.43
1:G:130:GLY:O	1:G:195:SER:C	2.57	0.43
1:G:362:ASN:OD1	1:G:363:HIS:N	2.51	0.43
3:L:203:SER:HA	3:L:204:PRO:HD3	1.92	0.43
1:G:128:GLY:O	1:G:130:GLY:N	2.52	0.42
1:G:129:ALA:O	1:G:130:GLY:C	2.58	0.42
4:H:122:PHE:HA	4:H:123:PRO:HD3	1.80	0.42
1:G:296:CYS:HA	1:G:331:CYS:HA	2.01	0.42
2:C:93:VAL:O	2:C:93:VAL:HG13	2.20	0.42
3:L:124:GLN:HB3	3:L:124:GLN:HE21	1.67	0.42
1:G:326:ILE:N	1:G:326:ILE:HD13	2.17	0.41
2:C:12:VAL:HG22	2:C:13:GLU:N	2.35	0.41
1:G:477:ASP:HA	1:G:480:ARG:HB2	2.01	0.41
2:C:11:THR:HG22	2:C:72:LYS:HA	2.02	0.41
4:H:100(M):PHE:CD2	4:H:100(M):PHE:N	2.88	0.41
1:G:92:HIS:O	1:G:93:PHE:HD1	2.03	0.41
3:L:50:GLY:O	3:L:51:ALA:HB3	2.19	0.41
2:C:157:TRP:CD1	2:C:174:ILE:HD12	2.55	0.41
4:H:101:ASP:N	4:H:101:ASP:OD2	2.49	0.41
1:G:358:THR:HB	1:G:465:THR:HG22	2.02	0.41
1:G:386:ASN:O	1:G:416:LEU:HD12	2.20	0.41
3:L:210:ASN:HB2	3:L:213:GLU:HG3	2.03	0.41
1:G:251:ILE:CD1	1:G:482:GLU:HB3	2.45	0.41
4:H:146:PHE:HA	4:H:147:PRO:HA	1.74	0.41
1:G:437:PRO:HA	1:G:438:PRO:HD3	1.96	0.41
3:L:43:ALA:HA	3:L:44:PRO:HD3	1.97	0.41
2:C:13:GLU:HG3	2:C:70:ILE:HG22	2.03	0.40
4:H:18:VAL:O	4:H:81:GLU:HA	2.21	0.40
1:G:298:ARG:HA	1:G:299:PRO:HD3	1.97	0.40

Continued on next page...

Continued from previous page...

Atom-1	Atom-2	Distance(Å)	Clash(Å)
1:G:220:PRO:HD2	1:G:223:PHE:HB2	2.03	0.40
3:L:108:ARG:HG2	3:L:109:THR:N	2.32	0.40
1:G:280:ASN:HD22	2:C:35:LYS:HE2	1.87	0.40
1:G:333:ILE:HD11	1:G:390:LEU:HD21	2.03	0.40

There are no symmetry-related clashes.

5.3 Torsion angles

5.3.1 Protein backbone ⓘ

In the following table, the Percentiles column shows the percent Ramachandran outliers of the chain as a percentile score with respect to all X-ray entries followed by that with respect to entries of similar resolution. The Analysed column shows the number of residues for which the backbone conformation was analysed, and the total number of residues.

Mol	Chain	Analysed	Favoured	Allowed	Outliers	Percentiles	
1	G	341/344 (99%)	290 (85%)	40 (12%)	11 (3%)	6	43
2	C	173/181 (96%)	158 (91%)	15 (9%)	0	100	100
3	L	213/215 (99%)	194 (91%)	14 (7%)	5 (2%)	10	54
4	H	231/235 (98%)	208 (90%)	21 (9%)	2 (1%)	25	76
All	All	958/975 (98%)	850 (89%)	90 (9%)	18 (2%)	13	60

All (18) Ramachandran outliers are listed below:

Mol	Chain	Res	Type
1	G	129	ALA
1	G	299	PRO
1	G	323	ILE
1	G	412	ASN
3	L	202	SER
1	G	195	SER
1	G	322(A)	ILE
1	G	491	ILE
3	L	138	ASN
1	G	406	ASN
3	L	204	PRO
4	H	26	GLY
1	G	397	ASN
3	L	68	GLY

Continued on next page...

Continued from previous page...

Mol	Chain	Res	Type
4	H	144	ASP
3	L	128	GLY
1	G	313[A]	PRO
1	G	313[B]	PRO

5.3.2 Protein sidechains ⓘ

In the following table, the Percentiles column shows the percent sidechain outliers of the chain as a percentile score with respect to all X-ray entries followed by that with respect to entries of similar resolution. The Analysed column shows the number of residues for which the sidechain conformation was analysed, and the total number of residues.

Mol	Chain	Analysed	Rotameric	Outliers	Percentiles	
1	G	302/303 (100%)	275 (91%)	27 (9%)	14	51
2	C	159/164 (97%)	154 (97%)	5 (3%)	52	88
3	L	182/182 (100%)	173 (95%)	9 (5%)	35	78
4	H	192/194 (99%)	182 (95%)	10 (5%)	32	76
All	All	835/843 (99%)	784 (94%)	51 (6%)	26	71

All (51) residues with a non-rotameric sidechain are listed below:

Mol	Chain	Res	Type
1	G	93	PHE
1	G	97	LYS
1	G	105	GLN
1	G	112	TRP
1	G	119	CYS
1	G	196	CYS
1	G	230	ASP
1	G	234	ASN
1	G	255	VAL
1	G	267	GLU
1	G	273	ARG
1	G	287	GLN
1	G	289	LYS
1	G	326	ILE
1	G	340	ASP
1	G	342	LEU
1	G	352	GLN
1	G	386	ASN

Continued on next page...

Continued from previous page...

Mol	Chain	Res	Type
1	G	397	ASN
1	G	418	CYS
1	G	434	MET
1	G	440	ARG
1	G	442	GLN
1	G	444	ARG
1	G	452	LEU
1	G	460	ILE
1	G	489	VAL
2	C	63	ASP
2	C	119	GLU
2	C	134	ARG
2	C	152	GLN
2	C	162	LEU
3	L	24	ARG
3	L	81	GLU
3	L	83	LEU
3	L	85	VAL
3	L	100	GLN
3	L	122	ASP
3	L	129	THR
3	L	151	ASP
3	L	181	LEU
4	H	3	LEU
4	H	31	MET
4	H	100(B)	ASP
4	H	100(K)	ARG
4	H	100(N)	PHE
4	H	116	THR
4	H	138	LEU
4	H	147	PRO
4	H	199	ASN
4	H	209	LYS

Some sidechains can be flipped to improve hydrogen bonding and reduce clashes. All (21) such sidechains are listed below:

Mol	Chain	Res	Type
1	G	94	ASN
1	G	105	GLN
1	G	234	ASN
1	G	241	ASN
1	G	279	ASN

Continued on next page...

Continued from previous page...

Mol	Chain	Res	Type
1	G	302	ASN
1	G	328	GLN
1	G	352	GLN
1	G	386	ASN
1	G	389	GLN
1	G	392	ASN
1	G	397	ASN
1	G	442	GLN
2	C	103	ASN
2	C	112	GLN
3	L	27	GLN
3	L	37	GLN
3	L	90	GLN
3	L	124	GLN
4	H	171	GLN
4	H	199	ASN

5.3.3 RNA ⓘ

There are no RNA chains in this entry.

5.4 Non-standard residues in protein, DNA, RNA chains ⓘ

There are no non-standard protein/DNA/RNA residues in this entry.

5.5 Carbohydrates ⓘ

2 carbohydrates are modelled in this entry.

In the following table, the Counts columns list the number of bonds (or angles) for which Mogul statistics could be retrieved, the number of bonds (or angles) that are observed in the model and the number of bonds (or angles) that are defined in the chemical component dictionary. The Link column lists molecule types, if any, to which the group is linked. The Z score for a bond length (or angle) is the number of standard deviations the observed value is removed from the expected value. A bond length (or angle) with $|Z| > 2$ is considered an outlier worth inspection. RMSZ is the root-mean-square of all Z scores of the bond lengths (or angles).

Mol	Type	Chain	Res	Link	Bond lengths			Bond angles		
					Counts	RMSZ	$\# Z > 2$	Counts	RMSZ	$\# Z > 2$
6	NDG	G	776	1,6	12,14,15	0.49	0	15,19,21	0.51	0
6	FUC	G	777	6	9,10,11	0.55	0	10,14,16	0.59	0

In the following table, the Chirals column lists the number of chiral outliers, the number of chiral centers analysed, the number of these observed in the model and the number defined in the chemical component dictionary. Similar counts are reported in the Torsion and Rings columns. '-' means no outliers of that kind were identified.

Mol	Type	Chain	Res	Link	Chirals	Torsions	Rings
6	NDG	G	776	1,6	-	0/6/23/26	0/1/1/1
6	FUC	G	777	6	-	0/0/17/20	0/1/1/1

There are no bond length outliers.

There are no bond angle outliers.

There are no chirality outliers.

There are no torsion outliers.

There are no ring outliers.

5.6 Ligand geometry ⓘ

11 ligands are modelled in this entry.

In the following table, the Counts columns list the number of bonds (or angles) for which Mogul statistics could be retrieved, the number of bonds (or angles) that are observed in the model and the number of bonds (or angles) that are defined in the chemical component dictionary. The Link column lists molecule types, if any, to which the group is linked. The Z score for a bond length (or angle) is the number of standard deviations the observed value is removed from the expected value. A bond length (or angle) with $|Z| > 2$ is considered an outlier worth inspection. RMSZ is the root-mean-square of all Z scores of the bond lengths (or angles).

Mol	Type	Chain	Res	Link	Bond lengths			Bond angles		
					Counts	RMSZ	$\# Z > 2$	Counts	RMSZ	$\# Z > 2$
9	SO4	G	5	-	4,4,4	0.20	0	6,6,6	0.06	0
5	NAG	G	762	1	12,14,15	0.51	0	15,19,21	0.69	0
7	NDG	G	832	1	12,14,15	0.44	0	15,19,21	0.86	1 (6%)
5	NAG	G	862	1	12,14,15	0.55	0	15,19,21	0.66	0
8	XYL	H	217	-	9,9,9	1.15	0	11,11,11	0.82	0
8	XYL	H	218	-	9,9,9	1.15	0	11,11,11	0.80	0
8	XYL	H	219	-	9,9,9	1.15	0	11,11,11	0.83	0
9	SO4	H	220	-	4,4,4	0.32	0	6,6,6	0.06	0
9	SO4	H	221	-	4,4,4	0.33	0	6,6,6	0.06	0
9	SO4	H	222	-	4,4,4	0.23	0	6,6,6	0.07	0
9	SO4	L	215	-	4,4,4	0.33	0	6,6,6	0.07	0

In the following table, the Chirals column lists the number of chiral outliers, the number of chiral centers analysed, the number of these observed in the model and the number defined in the chemical

component dictionary. Similar counts are reported in the Torsion and Rings columns. '-' means no outliers of that kind were identified.

Mol	Type	Chain	Res	Link	Chirals	Torsions	Rings
9	SO4	G	5	-	-	0/0/0/0	0/0/0/0
5	NAG	G	762	1	-	0/6/23/26	0/1/1/1
7	NDG	G	832	1	-	0/6/23/26	0/1/1/1
5	NAG	G	862	1	-	0/6/23/26	0/1/1/1
8	XYL	H	217	-	-	0/12/12/12	0/0/0/0
8	XYL	H	218	-	-	0/12/12/12	0/0/0/0
8	XYL	H	219	-	-	0/12/12/12	0/0/0/0
9	SO4	H	220	-	-	0/0/0/0	0/0/0/0
9	SO4	H	221	-	-	0/0/0/0	0/0/0/0
9	SO4	H	222	-	-	0/0/0/0	0/0/0/0
9	SO4	L	215	-	-	0/0/0/0	0/0/0/0

There are no bond length outliers.

All (1) bond angle outliers are listed below:

Mol	Chain	Res	Type	Atoms	Z	Observed(°)	Ideal(°)
7	G	832	NDG	C2-N2-C7	-2.04	119.67	123.09

There are no chirality outliers.

There are no torsion outliers.

There are no ring outliers.

5.7 Other polymers ⓘ

There are no such residues in this entry.

5.8 Polymer linkage issues

There are no chain breaks in this entry.

6 Fit of model and data ⓘ

6.1 Protein, DNA and RNA chains ⓘ

In the following table, the column labelled ‘#RSRZ> 2’ contains the number (and percentage) of RSRZ outliers, followed by percent RSRZ outliers for the chain as percentile scores relative to all X-ray entries and entries of similar resolution. The OWAB column contains the minimum, median, 95th percentile and maximum values of the occupancy-weighted average B-factor per residue. The column labelled ‘Q< 0.9’ lists the number of (and percentage) of residues with an average occupancy less than 0.9.

Mol	Chain	Analysed	<RSRZ>	#RSRZ>2		OWAB(Å ²)	Q<0.9
1	G	339/344 (98%)	0.33	20 (5%)	22 5	58, 122, 148, 160	0
2	C	175/181 (96%)	0.36	6 (3%)	43 10	100, 139, 161, 166	0
3	L	215/215 (100%)	0.29	4 (1%)	64 20	65, 111, 141, 154	0
4	H	233/235 (99%)	0.13	2 (0%)	81 37	48, 83, 121, 150	0
All	All	962/975 (98%)	0.28	32 (3%)	44 10	48, 116, 154, 166	0

All (32) RSRZ outliers are listed below:

Mol	Chain	Res	Type	RSRZ
1	G	460	ILE	4.2
1	G	404	GLY	3.9
1	G	403	GLU	3.8
1	G	267	GLU	3.7
1	G	315[A]	ARG	3.2
3	L	169	ARG	3.0
4	H	129	LYS	3.0
4	H	216	CYS	3.0
2	C	134	ARG	2.9
3	L	154	LEU	2.8
1	G	321	GLY	2.8
3	L	110	VAL	2.8
1	G	127	VAL	2.8
1	G	406	ASN	2.6
2	C	122	PRO	2.6
1	G	408	THR	2.5
1	G	268	GLU	2.5
1	G	316	ALA	2.5
1	G	322(A)	ILE	2.5
2	C	110	GLN	2.4
1	G	324	GLY	2.4

Continued on next page...

Continued from previous page...

Mol	Chain	Res	Type	RSRZ
1	G	322	GLU	2.4
1	G	462	GLU	2.3
2	C	109	LEU	2.3
2	C	171	LYS	2.3
1	G	265	LEU	2.2
1	G	320	THR	2.2
2	C	22	LYS	2.2
3	L	109	THR	2.1
1	G	236	LYS	2.1
1	G	325	ASP	2.0
1	G	246	GLN	2.0

6.2 Non-standard residues in protein, DNA, RNA chains ⓘ

There are no non-standard protein/DNA/RNA residues in this entry.

6.3 Carbohydrates ⓘ

In the following table, the Atoms column lists the number of modelled atoms in the group and the number defined in the chemical component dictionary. LLDF column lists the quality of electron density of the group with respect to its neighbouring residues in protein, DNA or RNA chains. The B-factors column lists the minimum, median, 95th percentile and maximum values of B factors of atoms in the group. The column labelled 'Q < 0.9' lists the number of atoms with occupancy less than 0.9.

Mol	Type	Chain	Res	Atoms	RSR	LLDF	B-factors(Å ²)	Q<0.9
6	FUC	G	777	10/11	0.32	-	141,142,143,143	0
6	NDG	G	776	14/15	0.41	-	138,139,140,141	0

6.4 Ligands ⓘ

In the following table, the Atoms column lists the number of modelled atoms in the group and the number defined in the chemical component dictionary. LLDF column lists the quality of electron density of the group with respect to its neighbouring residues in protein, DNA or RNA chains. The B-factors column lists the minimum, median, 95th percentile and maximum values of B factors of atoms in the group. The column labelled 'Q < 0.9' lists the number of atoms with occupancy less than 0.9.

Mol	Type	Chain	Res	Atoms	RSR	LLDF	B-factors(Å ²)	Q<0.9
7	NDG	G	832	14/15	0.28	-	141,144,147,147	0
8	XYL	H	217	10/10	0.32	-	145,150,150,150	0

Continued on next page...

Continued from previous page...

Mol	Type	Chain	Res	Atoms	RSR	LLDF	B-factors(\AA^2)	Q<0.9
5	NAG	G	762	14/15	0.34	-	105,108,110,110	0
9	SO4	H	222	5/5	0.13	-	143,143,143,143	5
5	NAG	G	862	14/15	0.29	-	135,138,140,140	0
9	SO4	L	215	5/5	0.13	-	186,187,187,187	0
9	SO4	H	221	5/5	0.22	-	189,189,190,190	0
8	XYL	H	218	10/10	0.17	-	134,136,137,137	0
9	SO4	G	5	5/5	0.14	-	163,163,164,164	5
9	SO4	H	220	5/5	0.16	-	161,161,161,161	0
8	XYL	H	219	10/10	0.25	-	153,155,156,157	0

6.5 Other polymers ⓘ

There are no such residues in this entry.