



Full wwPDB X-ray Structure Validation Report ⓘ

Feb 28, 2014 – 06:26 AM GMT

PDB ID : 2B7S
Title : R381K mutant of flavocytochrome c3
Authors : Pankhurst, K.L.; Mowat, C.G.; Rothery, E.L.; Miles, C.S.; Walkinshaw, M.D.;
Reid, G.A.; Chapman, S.K.
Deposited on : 2005-10-05
Resolution : 2.12 Å(reported)

This is a full wwPDB validation report for a publicly released PDB entry.
We welcome your comments at validation@mail.wwpdb.org
A user guide is available at <http://wwpdb.org/ValidationPDFNotes.html>

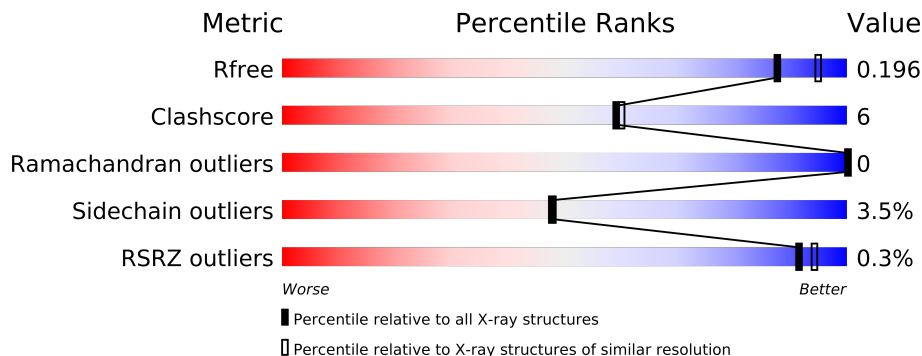
The following versions of software and data (see [references](#)) were used in the production of this report:

MolProbity : 4.02b-467
Mogul : 1.15 2013
Xtriage (Phenix) : dev-1323
EDS : stable22639
Percentile statistics : 21963
Refmac : 5.8.0049
CCP4 : 6.3.0 (Settle)
Ideal geometry (proteins) : Engh & Huber (2001)
Ideal geometry (DNA, RNA) : Parkinson et. al. (1996)
Validation Pipeline (wwPDB-VP) : stable22683

1 Overall quality at a glance

The reported resolution of this entry is 2.12 Å.

Percentile scores (ranging between 0-100) for global validation metrics of the entry are shown in the following graphic. The table shows the number of entries on which the scores are based.



Metric	Whole archive (#Entries)	Similar resolution (#Entries, resolution range(Å))
R_{free}	66092	3409 (2.14-2.10)
Clashscore	79885	4090 (2.14-2.10)
Ramachandran outliers	78287	4048 (2.14-2.10)
Sidechain outliers	78261	4049 (2.14-2.10)
RSRZ outliers	66119	3410 (2.14-2.10)

The table below summarises the geometric issues observed across the polymeric chains and their fit to the electron density. The red, orange, yellow and green segments on the lower bar indicate the fraction of residues that contain outliers for ≥ 3 , 2, 1 and 0 types of geometric quality criteria. The upper red bar (where present) indicates the fraction of residues that have poor fit to the electron density.

Mol	Chain	Length	Quality of chain
1	A	571	

The following table lists non-polymeric compounds that are outliers for geometric or electron-density-fit criteria:

Mol	Type	Chain	Res	Geometry	Electron density
3	HEM	A	802	-	X

2 Entry composition i

There are 6 unique types of molecules in this entry. The entry contains 5192 atoms, of which 0 are hydrogen and 0 are deuterium.

In the tables below, the ZeroOcc column contains the number of atoms modelled with zero occupancy, the AltConf column contains the number of residues with at least one atom in alternate conformation and the Trace column contains the number of residues modelled with at most 2 atoms.

- Molecule 1 is a protein called Fumarate reductase flavoprotein subunit.

Mol	Chain	Residues	Atoms					ZeroOcc	AltConf	Trace
			Total	C	N	O	S			
1	A	568	4185	2601	736	823	25	0	0	0

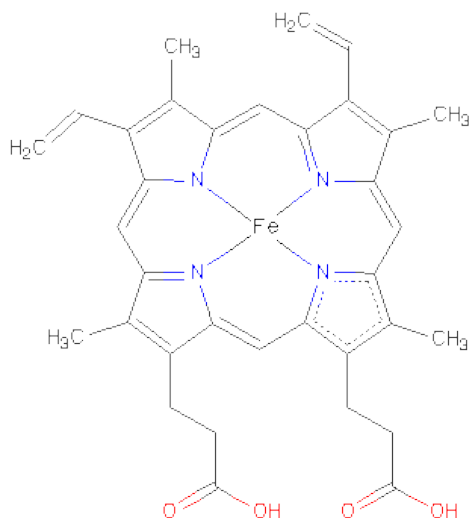
There is a discrepancy between the modelled and reference sequences:

Chain	Residue	Modelled	Actual	Comment	Reference
A	381	LYS	ARG	ENGINEERED	UNP Q02469

- Molecule 2 is SODIUM ION (three-letter code: NA) (formula: Na).

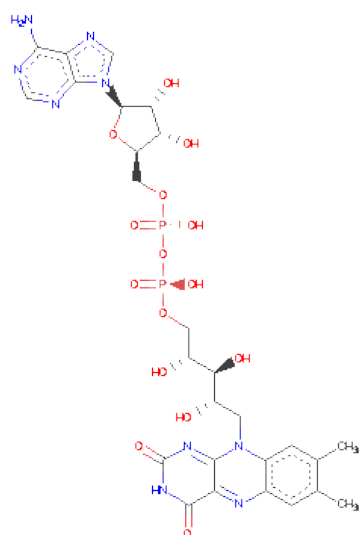
Mol	Chain	Residues	Atoms		ZeroOcc	AltConf
2	A	1	Total	Na	0	0
			1	1		

- Molecule 3 is PROTOPORPHYRIN IX CONTAINING FE (three-letter code: HEM) (formula: $C_{34}H_{32}FeN_4O_4$).



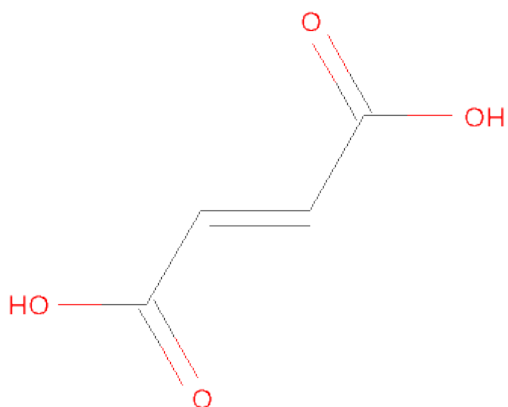
Mol	Chain	Residues	Atoms					ZeroOcc	AltConf
3	A	1	Total	C	Fe	N	O	0	0
			43	34	1	4	4		
3	A	1	Total	C	Fe	N	O	0	0
			43	34	1	4	4		
3	A	1	Total	C	Fe	N	O	0	0
			43	34	1	4	4		
3	A	1	Total	C	Fe	N	O	0	0
			43	34	1	4	4		

- Molecule 4 is FLAVIN-ADENINE DINUCLEOTIDE (three-letter code: FAD) (formula: $C_{27}H_{33}N_9O_{15}P_2$).



Mol	Chain	Residues	Atoms					ZeroOcc	AltConf
4	A	1	Total	C	N	O	P	0	0
			53	27	9	15	2		

- Molecule 5 is FUMARIC ACID (three-letter code: FUM) (formula: $C_4H_4O_4$).



Mol	Chain	Residues	Atoms			ZeroOcc	AltConf
5	A	1	Total	C	O	0	0
			8	4	4		

- Molecule 6 is water.

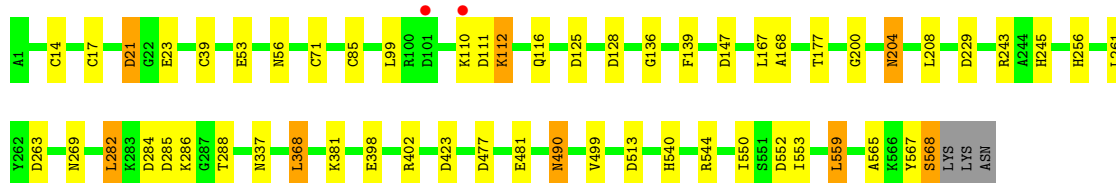
Mol	Chain	Residues	Atoms	ZeroOcc	AltConf
6	A	773	Total O 773 773	0	0

3 Residue-property plots

These plots are drawn for all protein, RNA and DNA chains in the entry. The first graphic for a chain summarises the proportions of errors displayed in the second graphic. The second graphic shows the sequence view annotated by issues in geometry and electron density. Residues are color-coded according to the number of geometric quality criteria for which they contain at least one outlier: green = 0, yellow = 1, orange = 2 and red = 3 or more. A red dot above a residue indicates a poor fit to the electron density (RSRZ > 2). Stretches of 2 or more consecutive residues without any outlier are shown as a green connector. Residues present in the sample, but not in the model, are shown in grey.

- Molecule 1: Fumarate reductase flavoprotein subunit

Chain A: 



4 Data and refinement statistics

Property	Value	Source
Space group	P 1 21 1	Depositor
Cell constants a, b, c, α , β , γ	45.23Å 91.36Å 78.19Å 90.00° 91.26° 90.00°	Depositor
Resolution (Å)	35.00 – 2.12 32.14 – 2.12	Depositor EDS
% Data completeness (in resolution range)	98.5 (35.00-2.12) 98.5 (32.14-2.12)	Depositor EDS
R_{merge}	0.12	Depositor
R_{sym}	(Not available)	Depositor
$\langle I/\sigma(I) \rangle$ ¹	4.69 (at 2.12Å)	Xtriage
Refinement program	REFMAC 5.2.0003	Depositor
R, R_{free}	0.144 , 0.197 0.146 , 0.196	Depositor DCC
R_{free} test set	1763 reflections (5.23%)	DCC
Wilson B-factor (Å ²)	15.5	Xtriage
Anisotropy	0.065	Xtriage
Bulk solvent k_{sol} (e/Å ³), B_{sol} (Å ²)	0.35 , 30.5	EDS
Estimated twinning fraction	0.029 for h,-k,-l	Xtriage
L-test for twinning	$\langle L \rangle = 0.49$, $\langle L^2 \rangle = 0.33$	Xtriage
Outliers	0 of 35994 reflections	Xtriage
F_o, F_c correlation	0.96	EDS
Total number of atoms	5192	wwPDB-VP
Average B, all atoms (Å ²)	15.0	wwPDB-VP

Xtriage's analysis on translational NCS is as follows: *The largest off-origin peak in the Patterson function is 4.96% of the height of the origin peak. No significant pseudotranslation is detected.*

¹Intensities estimated from amplitudes.

5 Model quality

5.1 Standard geometry

Bond lengths and bond angles in the following residue types are not validated in this section: HEM, FUM, FAD, NA

The Z score for a bond length (or angle) is the number of standard deviations the observed value is removed from the expected value. A bond length (or angle) with $|Z| > 5$ is considered an outlier worth inspection. RMSZ is the root-mean-square of all Z scores of the bond lengths (or angles).

Mol	Chain	Bond lengths		Bond angles	
		RMSZ	$\# Z > 5$	RMSZ	$\# Z > 5$
1	A	0.75	0/4255	0.85	12/5757 (0.2%)

Chiral center outliers are detected by calculating the chiral volume of a chiral center and verifying if the center is modelled as a planar moiety or with the opposite hand. A planarity outlier is detected by checking planarity of atoms in a peptide group, atoms in a mainchain group or atoms of a sidechain that are expected to be planar.

Mol	Chain	#Chirality outliers	#Planarity outliers
1	A	0	1

There are no bond length outliers.

All (12) bond angle outliers are listed below:

Mol	Chain	Res	Type	Atoms	Z	Observed(°)	Ideal(°)
1	A	559	LEU	CA-CB-CG	7.51	132.56	115.30
1	A	128	ASP	CB-CG-OD2	7.22	124.80	118.30
1	A	263	ASP	CB-CG-OD2	6.61	124.25	118.30
1	A	477	ASP	CB-CG-OD2	6.39	124.05	118.30
1	A	285	ASP	CB-CG-OD2	5.96	123.66	118.30
1	A	125	ASP	CB-CG-OD2	5.74	123.47	118.30
1	A	423	ASP	CB-CG-OD2	5.71	123.44	118.30
1	A	147	ASP	CB-CG-OD2	5.67	123.41	118.30
1	A	21	ASP	CB-CG-OD2	5.57	123.31	118.30
1	A	111	ASP	CB-CG-OD2	5.44	123.20	118.30
1	A	284	ASP	CB-CG-OD2	5.42	123.17	118.30
1	A	282	LEU	CB-CG-CD1	5.08	119.64	111.00

There are no chirality outliers.

All (1) planarity outliers are listed below:

Mol	Chain	Res	Type	Group
1	A	567	TYR	Peptide

5.2 Close contacts ⓘ

In the following table, the Non-H and H(model) columns list the number of non-hydrogen atoms and hydrogen atoms in the chain respectively. The H(added) column lists the number of hydrogens added by MolProbity. The Clashes column lists the number of clashes within the asymmetric unit, and the number in parentheses is this value normalized per 1000 atoms of the molecule in the chain. The Symm-Clashes column gives symmetry related clashes, in the same way as for the Clashes column.

Mol	Chain	Non-H	H(model)	H(added)	Clashes	Symm-Clashes
1	A	4185	0	4098	46	0
2	A	1	0	0	0	0
3	A	172	0	120	20	0
4	A	53	0	28	3	0
5	A	8	0	2	1	0
6	A	773	0	0	4	0
All	All	5192	0	4248	48	0

Clashscore is defined as the number of clashes calculated for the entry per 1000 atoms (including hydrogens) of the entry. The overall clashscore for this entry is 6.

All (48) close contacts within the same asymmetric unit are listed below.

Atom-1	Atom-2	Distance(Å)	Clash(Å)
1:A:14:CYS:SG	3:A:801:HEM:HAB	1.58	1.43
1:A:17:CYS:SG	3:A:801:HEM:HAC	1.70	1.30
1:A:71:CYS:SG	3:A:803:HEM:HAC	1.88	1.13
1:A:85:CYS:HG	3:A:804:HEM:CAC	1.74	0.96
1:A:204:ASN:H	1:A:204:ASN:HD22	1.16	0.93
1:A:229:ASP:H	1:A:256:HIS:HE1	1.16	0.90
1:A:39:CYS:SG	3:A:802:HEM:CBC	2.60	0.89
1:A:39:CYS:HG	3:A:802:HEM:CAC	1.89	0.83
1:A:229:ASP:H	1:A:256:HIS:CE1	1.97	0.82
1:A:402:ARG:HH22	5:A:1806:FUM:C4	1.98	0.77
1:A:85:CYS:SG	3:A:804:HEM:HAC	2.26	0.76
1:A:71:CYS:SG	3:A:803:HEM:CBC	2.77	0.73
1:A:368:LEU:HB2	6:A:2391:HOH:O	1.87	0.73
1:A:39:CYS:HG	3:A:802:HEM:CBC	2.02	0.70
1:A:17:CYS:SG	3:A:801:HEM:C3C	2.87	0.68
1:A:204:ASN:ND2	1:A:204:ASN:H	1.87	0.68
1:A:17:CYS:HG	3:A:801:HEM:HAC	1.56	0.67

Continued on next page...

Continued from previous page...

Atom-1	Atom-2	Distance(Å)	Clash(Å)
1:A:39:CYS:SG	3:A:802:HEM:C3C	2.86	0.67
1:A:177:THR:OG1	1:A:245:HIS:HE1	1.78	0.66
1:A:71:CYS:SG	3:A:803:HEM:C3C	2.88	0.64
1:A:381:LYS:HD2	1:A:398:GLU:HB3	1.79	0.63
1:A:14:CYS:SG	3:A:801:HEM:C3B	2.89	0.63
1:A:229:ASP:N	1:A:256:HIS:HE1	1.92	0.63
1:A:85:CYS:SG	3:A:804:HEM:C3C	2.95	0.60
1:A:14:CYS:SG	3:A:801:HEM:CBB	2.87	0.57
1:A:200:GLY:HA3	1:A:204:ASN:HD21	1.71	0.55
1:A:167:LEU:HB3	4:A:1805:FAD:HM72	1.90	0.54
3:A:802:HEM:HMC2	3:A:802:HEM:HBC2	1.90	0.53
1:A:85:CYS:HG	3:A:804:HEM:CBC	2.20	0.53
1:A:168:ALA:HA	4:A:1805:FAD:N5	2.25	0.51
1:A:85:CYS:SG	3:A:804:HEM:CBC	2.96	0.50
1:A:21:ASP:OD1	1:A:23:GLU:CG	2.61	0.49
1:A:481:GLU:HB2	6:A:2464:HOH:O	2.14	0.47
1:A:204:ASN:ND2	1:A:204:ASN:N	2.58	0.47
1:A:565:ALA:O	1:A:568:SER:HA	2.15	0.47
1:A:490:ASN:C	1:A:490:ASN:HD22	2.17	0.47
1:A:53:GLU:OE2	6:A:1981:HOH:O	2.20	0.47
1:A:513:ASP:HB2	6:A:1985:HOH:O	2.15	0.46
1:A:540:HIS:HE1	1:A:552:ASP:OD2	2.00	0.45
1:A:550:ILE:HG12	4:A:1805:FAD:C2	2.48	0.44
1:A:243:ARG:O	1:A:245:HIS:HD2	2.01	0.43
1:A:540:HIS:CD2	1:A:544:ARG:HG3	2.54	0.43
1:A:112:LYS:HA	1:A:112:LYS:HD2	1.71	0.42
3:A:804:HEM:HBD2	3:A:804:HEM:HHA	2.01	0.42
1:A:136:GLY:HA3	1:A:553:ILE:HD12	2.01	0.42
1:A:139:PHE:HB3	1:A:261:LEU:HB3	2.02	0.41
1:A:112:LYS:O	1:A:116:GLN:HG3	2.20	0.41
1:A:368:LEU:O	1:A:499:VAL:HA	2.21	0.40

There are no symmetry-related clashes.

5.3 Torsion angles

5.3.1 Protein backbone ⓘ

In the following table, the Percentiles column shows the percent Ramachandran outliers of the chain as a percentile score with respect to all X-ray entries followed by that with respect to entries of similar resolution. The Analysed column shows the number of residues for which the backbone conformation was analysed, and the total number of residues.

Mol	Chain	Analysed	Favoured	Allowed	Outliers	Percentiles	
1	A	566/571 (99%)	547 (97%)	19 (3%)	0	100	100

There are no Ramachandran outliers to report.

5.3.2 Protein sidechains ⓘ

In the following table, the Percentiles column shows the percent sidechain outliers of the chain as a percentile score with respect to all X-ray entries followed by that with respect to entries of similar resolution. The Analysed column shows the number of residues for which the sidechain conformation was analysed, and the total number of residues.

Mol	Chain	Analysed	Rotameric	Outliers	Percentiles	
1	A	431/445 (97%)	416 (96%)	15 (4%)	48	48

All (15) residues with a non-rotameric sidechain are listed below:

Mol	Chain	Res	Type
1	A	56	ASN
1	A	99	LEU
1	A	110	LYS
1	A	112	LYS
1	A	204	ASN
1	A	208	LEU
1	A	269	ASN
1	A	282	LEU
1	A	286	LYS
1	A	288	THR
1	A	337	ASN
1	A	368	LEU
1	A	490	ASN
1	A	559	LEU
1	A	568	SER

Some sidechains can be flipped to improve hydrogen bonding and reduce clashes. All (7) such sidechains are listed below:

Mol	Chain	Res	Type
1	A	56	ASN
1	A	91	ASN
1	A	204	ASN
1	A	245	HIS
1	A	256	HIS

Continued on next page...

Continued from previous page...

Mol	Chain	Res	Type
1	A	490	ASN
1	A	540	HIS

5.3.3 RNA ⓘ

There are no RNA chains in this entry.

5.4 Non-standard residues in protein, DNA, RNA chains ⓘ

There are no non-standard protein/DNA/RNA residues in this entry.

5.5 Carbohydrates ⓘ

There are no carbohydrates in this entry.

5.6 Ligand geometry ⓘ

Of 7 ligands modelled in this entry, 1 is monoatomic - leaving 6 for Mogul analysis.

In the following table, the Counts columns list the number of bonds (or angles) for which Mogul statistics could be retrieved, the number of bonds (or angles) that are observed in the model and the number of bonds (or angles) that are defined in the chemical component dictionary. The Link column lists molecule types, if any, to which the group is linked. The Z score for a bond length (or angle) is the number of standard deviations the observed value is removed from the expected value. A bond length (or angle) with $|Z| > 2$ is considered an outlier worth inspection. RMSZ is the root-mean-square of all Z scores of the bond lengths (or angles).

Mol	Type	Chain	Res	Link	Bond lengths			Bond angles		
					Counts	RMSZ	# $ Z > 2$	Counts	RMSZ	# $ Z > 2$
4	FAD	A	1805	-	58,58,58	2.69	20 (34%)	85,89,89	2.64	27 (31%)
5	FUM	A	1806	-	7,7,7	2.49	4 (57%)	8,8,8	1.20	1 (12%)
3	HEM	A	801	1	49,50,50	2.87	20 (40%)	46,82,82	2.53	14 (30%)
3	HEM	A	802	1	49,50,50	2.45	17 (34%)	46,82,82	2.87	12 (26%)
3	HEM	A	803	1	49,50,50	2.19	16 (32%)	46,82,82	2.68	16 (34%)
3	HEM	A	804	1	49,50,50	2.22	14 (28%)	46,82,82	2.22	9 (19%)

In the following table, the Chirals column lists the number of chiral outliers, the number of chiral centers analysed, the number of these observed in the model and the number defined in the chemical component dictionary. Similar counts are reported in the Torsion and Rings columns. '-' means

no outliers of that kind were identified.

Mol	Type	Chain	Res	Link	Chirals	Torsions	Rings
4	FAD	A	1805	-	1/1/9/9	0/34/50/50	0/1/6/6
5	FUM	A	1806	-	-	0/5/5/5	0/0/0/0
3	HEM	A	801	1	-	0/14/114/114	0/0/8/8
3	HEM	A	802	1	-	0/14/114/114	0/0/8/8
3	HEM	A	803	1	-	0/14/114/114	0/0/8/8
3	HEM	A	804	1	-	0/14/114/114	0/0/8/8

All (91) bond length outliers are listed below:

Mol	Chain	Res	Type	Atoms	Z	Observed(Å)	Ideal(Å)
4	A	1805	FAD	C6-C5X	7.66	1.50	1.41
3	A	801	HEM	C2B-C1B	7.66	1.46	1.44
4	A	1805	FAD	C4-C4X	7.21	1.53	1.41
4	A	1805	FAD	C5X-N5	6.56	1.45	1.35
4	A	1805	FAD	C9A-N10	6.05	1.47	1.38
3	A	802	HEM	C3D-C2D	5.99	1.54	1.43
3	A	801	HEM	C3D-C4D	5.77	1.46	1.44
3	A	804	HEM	C3D-C2D	5.75	1.53	1.43
3	A	801	HEM	C3D-C2D	5.44	1.53	1.43
3	A	801	HEM	C2D-C1D	5.40	1.45	1.44
3	A	804	HEM	C3C-CAC	5.40	1.57	1.40
3	A	802	HEM	C3C-CAC	5.39	1.57	1.40
4	A	1805	FAD	C10-N1	-5.37	1.26	1.35
3	A	804	HEM	C3B-CAB	5.14	1.56	1.40
3	A	801	HEM	C4A-C3A	5.07	1.46	1.40
3	A	801	HEM	C3C-CAC	5.07	1.56	1.40
3	A	803	HEM	C3B-C2B	-5.03	1.35	1.43
3	A	801	HEM	FE-ND	4.98	2.15	1.97
3	A	802	HEM	C3B-C2B	-4.97	1.35	1.43
3	A	801	HEM	C3B-CAB	4.95	1.56	1.40
3	A	804	HEM	C3B-C2B	-4.92	1.35	1.43
3	A	802	HEM	C3B-CAB	4.85	1.55	1.40
3	A	803	HEM	C3B-CAB	4.76	1.55	1.40
3	A	801	HEM	C3B-C2B	-4.73	1.35	1.43
3	A	802	HEM	FE-ND	4.67	2.14	1.97
3	A	803	HEM	FE-ND	4.61	2.14	1.97
3	A	803	HEM	C3C-CAC	4.58	1.54	1.40
3	A	804	HEM	FE-ND	4.49	2.14	1.97
3	A	803	HEM	C3D-C2D	4.49	1.51	1.43
3	A	801	HEM	C3C-C2C	-4.46	1.36	1.43
3	A	802	HEM	C2D-C1D	4.36	1.45	1.44
3	A	802	HEM	C3C-C2C	-4.28	1.36	1.43

Continued on next page...

Continued from previous page...

Mol	Chain	Res	Type	Atoms	Z	Observed(Å)	Ideal(Å)
4	A	1805	FAD	O2'-C2'	4.16	1.53	1.43
3	A	802	HEM	C4A-C3A	4.12	1.45	1.40
3	A	803	HEM	FE-NC	4.12	2.13	1.97
3	A	804	HEM	C3C-C2C	-4.07	1.36	1.43
3	A	803	HEM	C3C-C2C	-4.06	1.36	1.43
4	A	1805	FAD	C4'-C3'	3.99	1.61	1.53
3	A	802	HEM	C3D-C4D	3.95	1.45	1.44
4	A	1805	FAD	O4B-C1B	-3.82	1.35	1.41
5	A	1806	FUM	O3-C2	3.74	1.33	1.23
3	A	801	HEM	FE-NB	3.70	2.11	1.97
4	A	1805	FAD	O4-C4	-3.66	1.17	1.24
4	A	1805	FAD	C2-N3	3.62	1.44	1.37
3	A	803	HEM	FE-NA	3.55	2.07	1.92
4	A	1805	FAD	C2A-N3A	3.51	1.39	1.32
5	A	1806	FUM	O8-C6	-3.41	1.20	1.30
3	A	802	HEM	FE-NA	3.40	2.07	1.92
3	A	804	HEM	FE-NA	3.40	2.07	1.92
3	A	804	HEM	C4A-C3A	3.16	1.44	1.40
4	A	1805	FAD	O3B-C3B	3.10	1.50	1.43
4	A	1805	FAD	C2-N1	3.03	1.43	1.35
4	A	1805	FAD	C1B-N9A	-3.03	1.39	1.48
3	A	803	HEM	CHA-C4D	3.02	1.40	1.35
3	A	801	HEM	CMC-C2C	2.94	1.56	1.47
3	A	801	HEM	CMA-C3A	2.94	1.57	1.51
5	A	1806	FUM	O7-C6	2.92	1.31	1.23
3	A	802	HEM	CMC-C2C	2.90	1.56	1.47
3	A	801	HEM	FE-NC	2.87	2.08	1.97
4	A	1805	FAD	C1'-C2'	2.84	1.54	1.51
3	A	801	HEM	FE-NA	2.83	2.04	1.92
3	A	803	HEM	CMD-C2D	2.79	1.56	1.47
5	A	1806	FUM	O1-C2	-2.77	1.22	1.30
3	A	803	HEM	CMB-C2B	2.76	1.56	1.47
3	A	804	HEM	C3D-C4D	2.72	1.45	1.44
4	A	1805	FAD	C4X-C10	2.67	1.45	1.40
4	A	1805	FAD	C5'-C4'	-2.62	1.47	1.51
3	A	803	HEM	C4A-C3A	2.61	1.43	1.40
3	A	801	HEM	CHB-C1B	2.60	1.39	1.35
3	A	801	HEM	CMB-C2B	2.59	1.55	1.47
3	A	801	HEM	CMD-C2D	2.57	1.55	1.47
3	A	802	HEM	CMB-C2B	2.54	1.55	1.47
3	A	802	HEM	CMD-C2D	2.53	1.55	1.47
3	A	802	HEM	CMA-C3A	2.52	1.56	1.51

Continued on next page...

Continued from previous page...

Mol	Chain	Res	Type	Atoms	Z	Observed(Å)	Ideal(Å)
3	A	804	HEM	CMB-C2B	2.46	1.55	1.47
4	A	1805	FAD	P-O3P	2.45	1.64	1.59
4	A	1805	FAD	C4A-N3A	2.41	1.39	1.35
3	A	804	HEM	FE-NC	2.38	2.06	1.97
3	A	802	HEM	FE-NB	2.34	2.06	1.97
3	A	804	HEM	CMC-C2C	2.33	1.54	1.47
3	A	803	HEM	CHB-C1B	2.30	1.39	1.35
3	A	803	HEM	CMC-C2C	2.29	1.54	1.47
3	A	803	HEM	CAA-C2A	2.26	1.56	1.52
3	A	804	HEM	CHA-C4D	2.23	1.39	1.35
3	A	801	HEM	C1C-NC	2.11	1.41	1.38
3	A	801	HEM	CAA-C2A	2.10	1.55	1.52
3	A	803	HEM	CHC-C1C	2.06	1.40	1.36
3	A	802	HEM	FE-NC	2.04	2.05	1.97
3	A	802	HEM	CHA-C4D	2.04	1.38	1.35
3	A	804	HEM	CMA-C3A	2.03	1.55	1.51
4	A	1805	FAD	C2A-N1A	-2.02	1.30	1.33

All (79) bond angle outliers are listed below:

Mol	Chain	Res	Type	Atoms	Z	Observed(°)	Ideal(°)
3	A	802	HEM	C3B-C4B-NB	-11.37	105.86	114.00
3	A	803	HEM	C3B-C4B-NB	-10.17	106.72	114.00
3	A	802	HEM	C4D-ND-C1D	9.44	114.82	105.16
3	A	801	HEM	C3B-C4B-NB	-9.26	107.37	114.00
3	A	804	HEM	C3B-C4B-NB	-8.47	107.94	114.00
3	A	801	HEM	C4D-ND-C1D	8.40	113.75	105.16
4	A	1805	FAD	C2'-C1'-N10	-7.74	102.18	112.45
4	A	1805	FAD	N3A-C2A-N1A	-7.14	122.74	128.71
4	A	1805	FAD	C2B-C1B-N9A	7.08	131.43	113.27
3	A	804	HEM	C4D-ND-C1D	7.05	112.37	105.16
4	A	1805	FAD	O4B-C1B-N9A	6.95	114.91	108.44
3	A	803	HEM	C4D-ND-C1D	6.50	111.82	105.16
4	A	1805	FAD	O2B-C2B-C3B	6.32	132.39	111.83
4	A	1805	FAD	O4'-C4'-C3'	-6.07	93.93	109.05
3	A	803	HEM	CBD-CAD-C3D	-5.70	101.94	114.37
4	A	1805	FAD	O4'-C4'-C5'	5.58	121.59	110.12
3	A	802	HEM	C1B-NB-C4B	5.43	110.72	105.16
3	A	802	HEM	C2D-C1D-ND	-5.23	106.76	112.93
3	A	803	HEM	C4C-NC-C1C	4.98	110.72	105.53
4	A	1805	FAD	O2'-C2'-C1'	4.63	121.20	109.71
3	A	801	HEM	C2D-C1D-ND	-4.58	107.52	112.93

Continued on next page...

Continued from previous page...

Mol	Chain	Res	Type	Atoms	Z	Observed(°)	Ideal(°)
4	A	1805	FAD	C4X-N5-C5X	4.56	121.81	116.69
3	A	801	HEM	C1B-NB-C4B	4.55	109.81	105.16
4	A	1805	FAD	O3'-C3'-C2'	-4.49	97.38	108.74
4	A	1805	FAD	O3B-C3B-C2B	-4.48	97.27	111.83
3	A	803	HEM	CMA-C3A-C4A	-4.28	122.04	128.62
4	A	1805	FAD	C9-C8-C7	4.07	126.39	119.88
3	A	804	HEM	C2D-C1D-ND	-3.92	108.30	112.93
4	A	1805	FAD	C1B-N9A-C4A	3.77	133.16	126.64
3	A	801	HEM	CBD-CAD-C3D	-3.67	106.36	114.37
3	A	802	HEM	CBD-CAD-C3D	-3.66	106.38	114.37
3	A	804	HEM	C4C-NC-C1C	3.48	109.15	105.53
3	A	802	HEM	C4A-CHB-C1B	-3.47	122.91	127.47
3	A	801	HEM	CBA-CAA-C2A	-3.46	106.60	112.69
3	A	802	HEM	CBA-CAA-C2A	-3.44	106.63	112.69
3	A	803	HEM	C2D-C1D-ND	-3.40	108.91	112.93
3	A	802	HEM	C4C-NC-C1C	3.30	108.97	105.53
4	A	1805	FAD	C2A-N1A-C6A	3.25	124.64	118.77
4	A	1805	FAD	O2B-C2B-C1B	3.24	121.02	111.23
3	A	804	HEM	CBA-CAA-C2A	-3.22	107.03	112.69
3	A	803	HEM	C1B-NB-C4B	3.19	108.43	105.16
3	A	803	HEM	CBA-CAA-C2A	-3.19	107.08	112.69
3	A	801	HEM	C4C-NC-C1C	3.17	108.83	105.53
3	A	803	HEM	CHC-C1C-NC	3.05	127.38	124.73
4	A	1805	FAD	C3B-C2B-C1B	2.98	105.57	100.91
4	A	1805	FAD	C6-C5X-C9A	2.97	123.12	119.02
4	A	1805	FAD	C5'-C4'-C3'	2.90	117.53	112.06
4	A	1805	FAD	C8M-C8-C9	-2.87	113.46	120.38
3	A	802	HEM	CMA-C3A-C4A	-2.86	124.22	128.62
4	A	1805	FAD	C4B-O4B-C1B	2.85	112.84	109.75
4	A	1805	FAD	C8A-N9A-C1B	-2.79	120.89	126.38
3	A	801	HEM	CHC-C1C-NC	2.75	127.12	124.73
3	A	803	HEM	CHD-C4C-NC	2.73	127.10	124.73
3	A	801	HEM	C3A-C4A-NA	-2.67	107.39	109.41
3	A	803	HEM	CMA-C3A-C2A	2.65	129.93	124.94
3	A	804	HEM	CHA-C4D-ND	2.58	127.85	124.31
3	A	802	HEM	CHC-C4B-NB	2.52	126.68	124.58
3	A	804	HEM	C1B-NB-C4B	2.51	107.73	105.16
3	A	803	HEM	C4A-NA-C1A	2.47	110.02	106.76
3	A	803	HEM	C2A-C1A-NA	-2.46	106.31	109.73
3	A	803	HEM	C3A-C4A-NA	-2.44	107.57	109.41
4	A	1805	FAD	C2-N1-C10	2.38	117.37	114.98
3	A	801	HEM	CHC-C4B-NB	2.35	126.54	124.58

Continued on next page...

Continued from previous page...

Mol	Chain	Res	Type	Atoms	Z	Observed(°)	Ideal(°)
3	A	803	HEM	CHB-C1B-NB	2.35	127.53	124.31
3	A	801	HEM	CMA-C3A-C4A	-2.34	125.02	128.62
4	A	1805	FAD	C9A-C5X-N5	-2.30	118.84	122.37
3	A	804	HEM	CMA-C3A-C4A	-2.27	125.13	128.62
4	A	1805	FAD	C1'-N10-C10	2.24	122.34	119.17
3	A	804	HEM	CHC-C1C-NC	2.21	126.65	124.73
4	A	1805	FAD	C4-N3-C2	-2.19	120.91	125.39
3	A	802	HEM	CHB-C1B-NB	2.17	127.29	124.31
3	A	802	HEM	C1A-C2A-C3A	2.12	109.12	106.92
4	A	1805	FAD	O3'-C3'-C4'	-2.12	103.38	108.74
3	A	801	HEM	C4A-C3A-C2A	2.10	108.46	107.00
3	A	801	HEM	O2D-CGD-CBD	2.08	121.56	114.22
3	A	801	HEM	O2D-CGD-O1D	-2.07	118.04	123.30
3	A	803	HEM	CHA-C4D-ND	2.06	127.13	124.31
4	A	1805	FAD	O2A-PA-O1A	2.02	123.51	112.21
5	A	1806	FUM	C5-C4-C2	-2.00	117.85	127.28

All (1) chirality outliers are listed below:

Mol	Chain	Res	Type	Atom
4	A	1805	FAD	C2B

There are no torsion outliers.

There are no ring outliers.

5.7 Other polymers ⓘ

There are no such residues in this entry.

5.8 Polymer linkage issues

There are no chain breaks in this entry.

6 Fit of model and data ⓘ

6.1 Protein, DNA and RNA chains ⓘ

In the following table, the column labelled ‘#RSRZ> 2’ contains the number (and percentage) of RSRZ outliers, followed by percent RSRZ outliers for the chain as percentile scores relative to all X-ray entries and entries of similar resolution. The OWAB column contains the minimum, median, 95th percentile and maximum values of the occupancy-weighted average B-factor per residue. The column labelled ‘Q< 0.9’ lists the number of (and percentage) of residues with an average occupancy less than 0.9.

Mol	Chain	Analysed	<RSRZ>	#RSRZ>2	OWAB(Å ²)	Q<0.9
1	A	568/571 (99%)	-0.52	2 (0%) 90 93	5, 12, 22, 35	0

All (2) RSRZ outliers are listed below:

Mol	Chain	Res	Type	RSRZ
1	A	101	ASP	2.9
1	A	110	LYS	2.3

6.2 Non-standard residues in protein, DNA, RNA chains ⓘ

There are no non-standard protein/DNA/RNA residues in this entry.

6.3 Carbohydrates ⓘ

There are no carbohydrates in this entry.

6.4 Ligands ⓘ

In the following table, the Atoms column lists the number of modelled atoms in the group and the number defined in the chemical component dictionary. LLDF column lists the quality of electron density of the group with respect to its neighbouring residues in protein, DNA or RNA chains. The B-factors column lists the minimum, median, 95th percentile and maximum values of B factors of atoms in the group. The column labelled ‘Q< 0.9’ lists the number of atoms with occupancy less than 0.9.

Mol	Type	Chain	Res	Atoms	RSR	LLDF	B-factors(Å ²)	Q<0.9
3	HEM	A	802	43/43	0.11	2.75	11,14,24,32	0
3	HEM	A	803	43/43	0.10	1.13	6,11,28,38	0
5	FUM	A	1806	8/8	0.15	0.85	16,17,19,22	0

Continued on next page...

Continued from previous page...

Mol	Type	Chain	Res	Atoms	RSR	LLDF	B-factors(\AA^2)	Q<0.9
2	NA	A	1810	1/1	0.10	0.32	8,8,8,8	0
4	FAD	A	1805	53/53	0.13	0.30	5,9,15,17	0
3	HEM	A	801	43/43	0.09	0.20	9,13,19,25	0
3	HEM	A	804	43/43	0.08	0.04	4,8,13,16	0

6.5 Other polymers

There are no such residues in this entry.