



Full wwPDB X-ray Structure Validation Report

Feb 28, 2014 – 03:33 PM GMT

PDB ID : 3B9O
Title : long-chain alkane monooxygenase (LadA) in complex with coenzyme FMN
Authors : Li, L.; Yang, W.; Xu, F.; Bartlam, M.; Rao, Z.
Deposited on : 2007-11-06
Resolution : 1.90 Å(reported)

This is a full wwPDB validation report for a publicly released PDB entry.
We welcome your comments at validation@mail.wwpdb.org
A user guide is available at <http://wwpdb.org/ValidationPDFNotes.html>

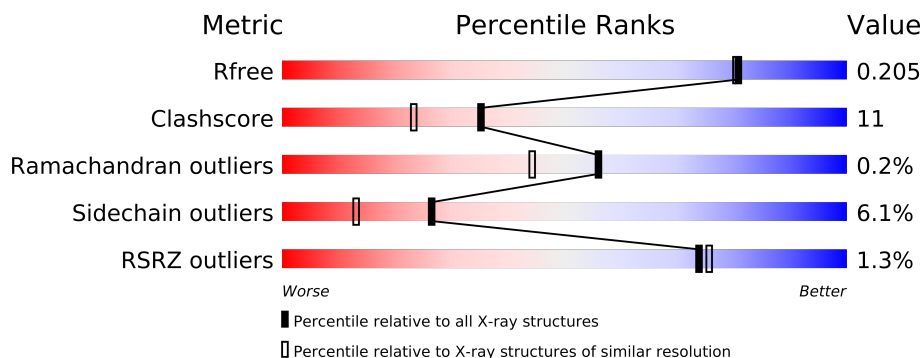
The following versions of software and data (see [references](#)) were used in the production of this report:

MolProbity : 4.02b-467
Mogul : 1.15 2013
Xtriage (Phenix) : dev-1323
EDS : stable22639
Percentile statistics : 21963
Refmac : 5.8.0049
CCP4 : 6.3.0 (Settle)
Ideal geometry (proteins) : Engh & Huber (2001)
Ideal geometry (DNA, RNA) : Parkinson et. al. (1996)
Validation Pipeline (wwPDB-VP) : stable22683

1 Overall quality at a glance



The reported resolution of this entry is 1.90 Å.

Percentile scores (ranging between 0-100) for global validation metrics of the entry are shown in the following graphic. The table shows the number of entries on which the scores are based.



Metric	Whole archive (#Entries)	Similar resolution (#Entries, resolution range(Å))
R_{free}	66092	3684 (1.90-1.90)
Clashscore	79885	4465 (1.90-1.90)
Ramachandran outliers	78287	4413 (1.90-1.90)
Sidechain outliers	78261	4414 (1.90-1.90)
RSRZ outliers	66119	3686 (1.90-1.90)

The table below summarises the geometric issues observed across the polymeric chains and their fit to the electron density. The red, orange, yellow and green segments on the lower bar indicate the fraction of residues that contain outliers for ≥ 3 , 2, 1 and 0 types of geometric quality criteria. The upper red bar (where present) indicates the fraction of residues that have poor fit to the electron density.

Mol	Chain	Length	Quality of chain
1	A	440	
1	B	440	

The following table lists non-polymeric compounds that are outliers for geometric or electron-density-fit criteria:

Mol	Type	Chain	Res	Geometry	Electron density
2	FMN	A	441	-	X

2 Entry composition i

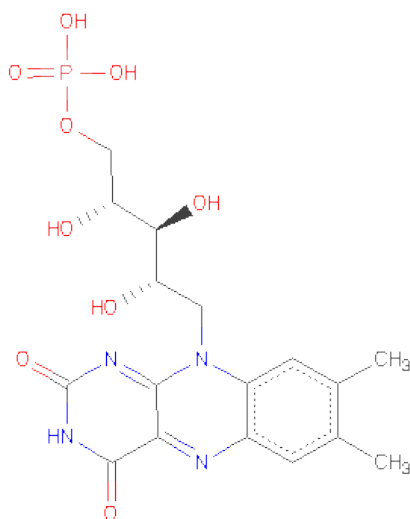
There are 3 unique types of molecules in this entry. The entry contains 7407 atoms, of which 0 are hydrogen and 0 are deuterium.

In the tables below, the ZeroOcc column contains the number of atoms modelled with zero occupancy, the AltConf column contains the number of residues with at least one atom in alternate conformation and the Trace column contains the number of residues modelled with at most 2 atoms.

- Molecule 1 is a protein called Alkane monooxygenase.

Mol	Chain	Residues	Atoms					ZeroOcc	AltConf	Trace
1	A	433	Total	C	N	O	S	0	0	0
			3508	2241	607	646	14			
1	B	433	Total	C	N	O	S	0	0	0
			3508	2241	607	646	14			

- Molecule 2 is FLAVIN MONONUCLEOTIDE (three-letter code: FMN) (formula: C₁₇H₂₁N₄O₉P).



Mol	Chain	Residues	Atoms					ZeroOcc	AltConf
2	A	1	Total	C	N	O	P	0	0
			31	17	4	9	1		
2	B	1	Total	C	N	O	P	0	0
			31	17	4	9	1		

- Molecule 3 is water.

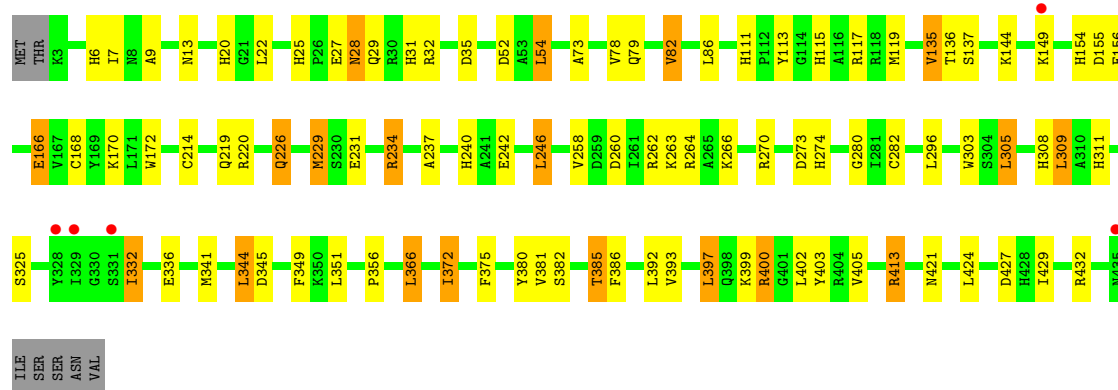
Mol	Chain	Residues	Atoms		ZeroOcc	AltConf
3	A	160	Total 160	O 160	0	0
3	B	169	Total 169	O 169	0	0

3 Residue-property plots

These plots are drawn for all protein, RNA and DNA chains in the entry. The first graphic for a chain summarises the proportions of errors displayed in the second graphic. The second graphic shows the sequence view annotated by issues in geometry and electron density. Residues are color-coded according to the number of geometric quality criteria for which they contain at least one outlier: green = 0, yellow = 1, orange = 2 and red = 3 or more. A red dot above a residue indicates a poor fit to the electron density ($RSRZ > 2$). Stretches of 2 or more consecutive residues without any outlier are shown as a green connector. Residues present in the sample, but not in the model, are shown in grey.

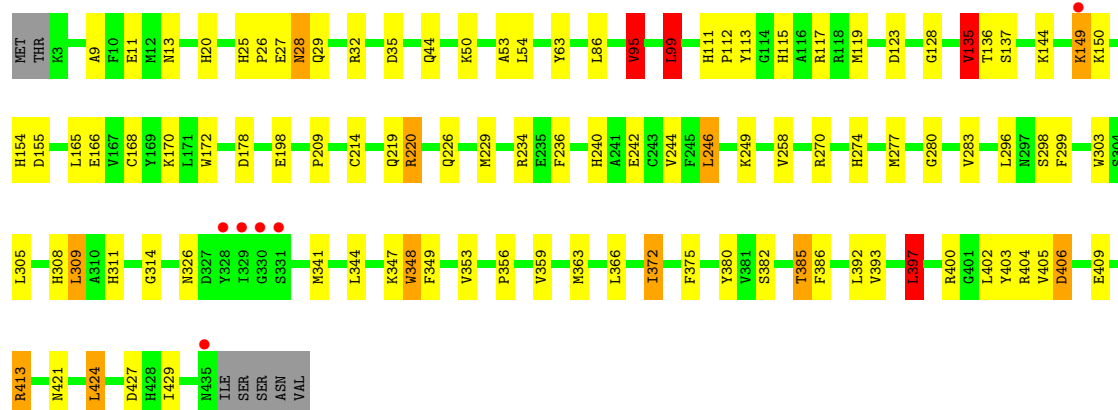
- Molecule 1: Alkane monooxygenase

Chain A: 



- Molecule 1: Alkane monooxygenase

Chain B: 



4 Data and refinement statistics

Property	Value	Source
Space group	P 43 21 2	Depositor
Cell constants a, b, c, α , β , γ	76.95Å 76.95Å 323.47Å 90.00° 90.00° 90.00°	Depositor
Resolution (Å)	50.00 – 1.90 49.52 – 1.60	Depositor EDS
% Data completeness (in resolution range)	(Not available) (50.00-1.90) 61.9 (49.52-1.60)	Depositor EDS
R_{merge}	0.09	Depositor
R_{sym}	(Not available)	Depositor
$\langle I/\sigma(I) \rangle$ ¹	1.06 (at 1.60Å)	Xtriage
Refinement program	CNS	Depositor
R, R_{free}	0.187 , 0.206 0.186 , 0.205	Depositor DCC
R_{free} test set	7110 reflections (10.10%)	DCC
Wilson B-factor (Å ²)	15.2	Xtriage
Anisotropy	0.621	Xtriage
Bulk solvent k_{sol} (e/Å ³), B_{sol} (Å ²)	0.37 , 31.9	EDS
Estimated twinning fraction	No twinning to report.	Xtriage
L-test for twinning	$\langle L \rangle = 0.49$, $\langle L^2 \rangle = 0.32$	Xtriage
Outliers	0 of 86516 reflections	Xtriage
F_o, F_c correlation	0.96	EDS
Total number of atoms	7407	wwPDB-VP
Average B, all atoms (Å ²)	25.0	wwPDB-VP

Xtriage's analysis on translational NCS is as follows: *The analyses of the Patterson function reveals a significant off-origin peak that is 44.74 % of the origin peak, indicating pseudo translational symmetry. The chance of finding a peak of this or larger height randomly in a structure without pseudo translational symmetry is equal to 1.4602e-04. The detected translational NCS is most likely also responsible for the elevated intensity ratio.*

¹Intensities estimated from amplitudes.

5 Model quality

5.1 Standard geometry

Bond lengths and bond angles in the following residue types are not validated in this section: FMN

The Z score for a bond length (or angle) is the number of standard deviations the observed value is removed from the expected value. A bond length (or angle) with $|Z| > 5$ is considered an outlier worth inspection. RMSZ is the root-mean-square of all Z scores of the bond lengths (or angles).

Mol	Chain	Bond lengths		Bond angles	
		RMSZ	$\# Z > 5$	RMSZ	$\# Z > 5$
1	A	0.83	1/3601 (0.0%)	0.94	15/4871 (0.3%)
1	B	0.83	0/3601	0.91	13/4871 (0.3%)
All	All	0.83	1/7202 (0.0%)	0.93	28/9742 (0.3%)

All (1) bond length outliers are listed below:

Mol	Chain	Res	Type	Atoms	Z	Observed(Å)	Ideal(Å)
1	A	166	GLU	CG-CD	5.51	1.60	1.51

All (28) bond angle outliers are listed below:

Mol	Chain	Res	Type	Atoms	Z	Observed(°)	Ideal(°)
1	A	413	ARG	NE-CZ-NH1	19.12	129.86	120.30
1	A	413	ARG	NE-CZ-NH2	-18.45	111.08	120.30
1	B	413	ARG	NE-CZ-NH2	-16.85	111.88	120.30
1	B	413	ARG	NE-CZ-NH1	14.37	127.49	120.30
1	A	270	ARG	NE-CZ-NH2	-9.50	115.55	120.30
1	B	270	ARG	NE-CZ-NH2	-8.42	116.09	120.30
1	A	270	ARG	NE-CZ-NH1	8.20	124.40	120.30
1	A	82	VAL	CB-CA-C	-8.16	95.89	111.40
1	A	234	ARG	NE-CZ-NH2	-8.08	116.26	120.30
1	A	22	LEU	CA-CB-CG	-8.02	96.86	115.30
1	B	270	ARG	NE-CZ-NH1	7.14	123.87	120.30
1	B	99	LEU	CB-CG-CD2	7.00	122.90	111.00
1	B	26	PRO	C-N-CA	-6.97	104.27	121.70
1	A	400	ARG	NE-CZ-NH2	-6.87	116.87	120.30
1	A	82	VAL	CG1-CB-CG2	6.81	121.79	110.90
1	B	95	VAL	CG1-CB-CG2	6.74	121.69	110.90
1	A	413	ARG	CD-NE-CZ	6.66	132.92	123.60
1	B	135	VAL	CG1-CB-CG2	6.16	120.75	110.90

Continued on next page...

Continued from previous page...

Mol	Chain	Res	Type	Atoms	Z	Observed(°)	Ideal(°)
1	B	234	ARG	NE-CZ-NH2	-6.13	117.24	120.30
1	A	35	ASP	CB-CG-OD1	5.77	123.49	118.30
1	A	234	ARG	NE-CZ-NH1	5.63	123.11	120.30
1	A	246	LEU	CA-CB-CG	5.49	127.93	115.30
1	B	413	ARG	CD-NE-CZ	5.45	131.23	123.60
1	B	424	LEU	CA-CB-CG	5.44	127.81	115.30
1	B	397	LEU	CB-CG-CD1	5.35	120.09	111.00
1	A	54	LEU	CB-CG-CD2	5.21	119.86	111.00
1	A	366	LEU	CA-CB-CG	5.21	127.28	115.30
1	B	35	ASP	CB-CG-OD1	5.01	122.81	118.30

There are no chirality outliers.

There are no planarity outliers.

5.2 Close contacts ⓘ

In the following table, the Non-H and H(model) columns list the number of non-hydrogen atoms and hydrogen atoms in the chain respectively. The H(added) column lists the number of hydrogens added by MolProbity. The Clashes column lists the number of clashes within the asymmetric unit, and the number in parentheses is this value normalized per 1000 atoms of the molecule in the chain. The Symm-Clashes column gives symmetry related clashes, in the same way as for the Clashes column.

Mol	Chain	Non-H	H(model)	H(added)	Clashes	Symm-Clashes
1	A	3508	0	3399	70	0
1	B	3508	0	3399	76	0
2	A	31	0	19	5	0
2	B	31	0	19	4	0
3	A	160	0	0	7	0
3	B	169	0	0	8	0
All	All	7407	0	6836	147	0

Clashscore is defined as the number of clashes calculated for the entry per 1000 atoms (including hydrogens) of the entry. The overall clashscore for this entry is 11.

All (147) close contacts within the same asymmetric unit are listed below.

Atom-1	Atom-2	Distance(Å)	Clash(Å)
1:A:282:CYS:HB3	3:A:466:HOH:O	1.46	1.12
1:B:380:TYR:H	1:B:385:THR:HG21	1.33	0.93
1:A:380:TYR:H	1:A:385:THR:HG21	1.41	0.85
1:A:111:HIS:HD2	1:A:113:TYR:H	1.26	0.83

Continued on next page...

Continued from previous page...

Atom-1	Atom-2	Distance(Å)	Clash(Å)
1:B:149:LYS:HD3	1:B:149:LYS:H	1.43	0.83
1:B:406:ASP:HB2	3:B:592:HOH:O	1.77	0.82
1:B:135:VAL:HG22	2:B:441:FMN:O2'	1.80	0.80
1:B:20:HIS:HE1	1:B:311:HIS:ND1	1.80	0.80
1:A:86:LEU:HD21	1:A:119:MET:CE	2.13	0.77
1:B:111:HIS:HD2	1:B:113:TYR:H	1.32	0.77
1:A:229:MET:HE3	1:A:229:MET:HA	1.67	0.77
1:A:20:HIS:HE1	1:A:311:HIS:ND1	1.85	0.73
1:B:309:LEU:HD13	1:B:341:MET:SD	2.30	0.72
1:A:111:HIS:CD2	1:A:113:TYR:H	2.08	0.72
1:A:154:HIS:HE1	2:A:441:FMN:O1P	1.74	0.71
1:A:305:LEU:HD13	1:A:309:LEU:HD22	1.73	0.70
1:B:359:VAL:HG12	1:B:363:MET:CE	2.21	0.70
1:B:154:HIS:HD2	1:B:155:ASP:OD1	1.74	0.70
1:B:149:LYS:HD3	1:B:149:LYS:N	2.08	0.69
1:B:149:LYS:CD	1:B:149:LYS:H	2.05	0.69
1:A:229:MET:CE	1:A:229:MET:HA	2.23	0.69
1:B:308:HIS:ND1	1:B:347:LYS:HE3	2.07	0.69
1:A:86:LEU:HD21	1:A:119:MET:HE1	1.76	0.66
1:A:156:GLU:OE2	3:A:599:HOH:O	2.14	0.66
1:A:28:ASN:HD22	1:A:29:GLN:H	1.44	0.66
1:B:111:HIS:CD2	1:B:113:TYR:H	2.14	0.65
1:A:242:GLU:OE1	1:A:413:ARG:HD3	1.97	0.65
1:B:380:TYR:H	1:B:385:THR:CG2	2.10	0.64
1:B:359:VAL:CG1	1:B:363:MET:CE	2.75	0.64
1:A:136:THR:O	1:A:137:SER:HB2	1.98	0.63
1:B:359:VAL:CG1	1:B:363:MET:HE2	2.29	0.62
1:B:28:ASN:ND2	1:B:382:SER:H	1.98	0.62
1:A:28:ASN:ND2	1:A:382:SER:H	1.97	0.62
1:A:400:ARG:HD3	3:A:593:HOH:O	2.00	0.62
1:B:296:LEU:C	1:B:296:LEU:HD23	2.21	0.61
1:A:86:LEU:HD21	1:A:119:MET:HE3	1.82	0.60
1:A:274:HIS:HD2	1:A:427:ASP:OD2	1.84	0.60
1:A:280:GLY:HA3	1:A:349:PHE:CD1	2.37	0.60
1:B:242:GLU:OE1	1:B:413:ARG:HD3	2.02	0.59
2:A:441:FMN:H3'	3:A:575:HOH:O	2.01	0.59
1:B:359:VAL:HG12	1:B:363:MET:HE3	1.85	0.59
1:B:393:VAL:HG12	1:B:397:LEU:HD22	1.85	0.59
1:A:332:ILE:HG22	1:A:336:GLU:HB3	1.85	0.59
1:B:28:ASN:HD22	1:B:29:GLN:H	1.51	0.58
1:A:413:ARG:HG2	1:A:421:ASN:O	2.04	0.58
1:B:115:HIS:HD2	3:B:563:HOH:O	1.86	0.58

Continued on next page...

Continued from previous page...

Atom-1	Atom-2	Distance(Å)	Clash(Å)
1:A:303:TRP:CE3	1:A:344:LEU:HD22	2.39	0.57
1:B:366:LEU:CD2	3:B:504:HOH:O	2.52	0.57
1:B:274:HIS:HD2	1:B:427:ASP:OD2	1.88	0.57
1:A:356:PRO:HG3	1:A:392:LEU:HB3	1.86	0.57
1:B:154:HIS:HE1	2:B:441:FMN:O1P	1.87	0.57
1:A:231:GLU:HG3	1:A:264:ARG:HH22	1.71	0.56
1:B:198:GLU:HG3	3:B:540:HOH:O	2.03	0.56
1:B:86:LEU:HD21	1:B:119:MET:HE1	1.86	0.56
1:B:44:GLN:HG3	1:B:95:VAL:HG13	1.87	0.56
1:A:305:LEU:HD13	1:A:309:LEU:CD2	2.35	0.56
1:A:393:VAL:HG12	1:A:397:LEU:HD22	1.87	0.55
1:B:359:VAL:CG1	1:B:363:MET:HE3	2.36	0.55
1:A:166:GLU:HG2	1:A:170:LYS:HE3	1.89	0.55
1:A:25:HIS:HD2	1:A:27:GLU:H	1.54	0.55
1:A:231:GLU:HG3	1:A:264:ARG:NH2	2.22	0.55
1:B:86:LEU:HD21	1:B:119:MET:CE	2.38	0.54
1:B:25:HIS:HD2	1:B:27:GLU:H	1.56	0.54
1:B:111:HIS:HE1	3:B:522:HOH:O	1.89	0.54
1:A:309:LEU:HD13	1:A:341:MET:SD	2.47	0.54
1:B:242:GLU:OE1	1:B:413:ARG:CD	2.57	0.53
1:A:111:HIS:HE1	3:A:522:HOH:O	1.90	0.53
1:A:86:LEU:CD2	1:A:119:MET:HE1	2.38	0.53
1:A:154:HIS:HD2	1:A:155:ASP:OD1	1.91	0.53
1:A:263:LYS:O	1:A:266:LYS:HE2	2.09	0.53
1:A:258:VAL:O	1:A:262:ARG:HG3	2.09	0.53
1:A:262:ARG:NH2	1:A:273:ASP:OD1	2.39	0.53
1:A:429:ILE:O	1:A:432:ARG:HD2	2.10	0.52
1:B:385:THR:HB	3:B:562:HOH:O	2.09	0.52
1:A:7:ILE:HD12	1:A:403:TYR:CE1	2.44	0.52
1:A:86:LEU:CD2	1:A:119:MET:CE	2.87	0.51
1:A:385:THR:HB	3:A:459:HOH:O	2.10	0.51
1:B:366:LEU:HD23	3:B:504:HOH:O	2.10	0.50
1:B:303:TRP:CE3	1:B:344:LEU:HD23	2.46	0.50
1:B:229:MET:N	2:B:441:FMN:O3P	2.43	0.50
1:A:115:HIS:HD2	3:A:471:HOH:O	1.95	0.50
1:B:53:ALA:HA	1:B:99:LEU:HD22	1.94	0.50
1:B:283:VAL:HG21	1:B:363:MET:HE1	1.94	0.49
1:B:29:GLN:NE2	1:B:32:ARG:HH11	2.11	0.49
1:A:400:ARG:HD2	1:A:402:LEU:HD12	1.93	0.49
1:B:397:LEU:HB3	1:B:403:TYR:HB2	1.94	0.49
1:A:345:ASP:HB3	1:A:351:LEU:HD23	1.95	0.48
1:A:168:CYS:HB3	1:A:172:TRP:CZ3	2.48	0.48

Continued on next page...

Continued from previous page...

Atom-1	Atom-2	Distance(Å)	Clash(Å)
1:A:29:GLN:NE2	1:A:32:ARG:HH11	2.11	0.48
1:B:296:LEU:HD12	1:B:353:VAL:HG21	1.96	0.48
1:B:9:ALA:HB1	1:B:386:PHE:CZ	2.49	0.48
1:B:359:VAL:HG12	1:B:363:MET:HE2	1.92	0.48
1:B:280:GLY:HA3	1:B:349:PHE:CD1	2.49	0.47
1:A:380:TYR:H	1:A:385:THR:CG2	2.20	0.47
1:A:303:TRP:CZ2	1:A:308:HIS:CE1	3.03	0.47
1:B:366:LEU:HD21	3:B:554:HOH:O	2.15	0.47
1:A:79:GLN:O	1:A:82:VAL:HG22	2.15	0.47
1:B:244:VAL:HG12	1:B:246:LEU:HD13	1.96	0.47
1:A:219:GLN:NE2	1:A:413:ARG:H	2.14	0.46
1:B:240:HIS:CE1	1:B:429:ILE:HD11	2.51	0.46
1:B:356:PRO:HG3	1:B:392:LEU:HB3	1.98	0.46
1:B:168:CYS:HB3	1:B:172:TRP:CZ3	2.51	0.45
1:A:372:ILE:HD11	1:A:375:PHE:CZ	2.51	0.45
1:B:400:ARG:HD2	1:B:402:LEU:HD12	1.99	0.45
1:A:73:ALA:HA	1:A:78:VAL:HB	1.99	0.45
1:A:25:HIS:CD2	1:A:27:GLU:H	2.34	0.45
1:A:234:ARG:HD2	1:A:260:ASP:OD1	2.17	0.45
1:B:219:GLN:HE21	1:B:413:ARG:H	1.64	0.44
1:A:240:HIS:CE1	1:A:429:ILE:HD11	2.53	0.44
1:A:31:HIS:H	1:A:31:HIS:CD2	2.34	0.44
1:A:117:ARG:HG3	1:A:214:CYS:SG	2.57	0.44
1:A:135:VAL:HG22	2:A:441:FMN:O2'	2.18	0.44
1:B:123:ASP:OD1	1:B:128:GLY:HA2	2.18	0.44
1:B:86:LEU:CD2	1:B:119:MET:HE1	2.48	0.43
1:A:229:MET:N	2:A:441:FMN:O3P	2.51	0.43
1:A:219:GLN:HE21	1:A:413:ARG:H	1.66	0.43
1:A:144:LYS:HB3	1:B:209:PRO:HG2	2.00	0.43
1:B:198:GLU:HB3	1:B:209:PRO:O	2.18	0.43
1:A:9:ALA:HB1	1:A:386:PHE:CZ	2.54	0.43
1:A:136:THR:O	1:A:137:SER:CB	2.60	0.43
1:A:28:ASN:HD21	1:A:382:SER:H	1.62	0.43
2:A:441:FMN:H5'2	2:A:441:FMN:C1'	2.48	0.43
1:A:28:ASN:ND2	1:A:29:GLN:H	2.14	0.43
1:A:226:GLN:NE2	1:A:237:ALA:HB2	2.34	0.43
1:B:117:ARG:HG3	1:B:214:CYS:SG	2.59	0.43
1:B:50:LYS:HB3	1:B:404:ARG:HG3	2.01	0.43
1:B:299:PHE:HB2	1:B:344:LEU:HD11	2.01	0.42
1:B:413:ARG:HG2	1:B:421:ASN:O	2.20	0.42
1:B:166:GLU:HG2	1:B:170:LYS:HE3	2.02	0.42
1:B:111:HIS:CG	1:B:112:PRO:HD2	2.55	0.42

Continued on next page...

Continued from previous page...

Atom-1	Atom-2	Distance(Å)	Clash(Å)
1:B:25:HIS:HE1	1:B:298:SER:OG	2.01	0.42
1:B:258:VAL:HG13	1:B:277:MET:HG3	2.02	0.42
1:B:372:ILE:HD11	1:B:375:PHE:CZ	2.55	0.42
1:B:63:TYR:CD1	1:B:314:GLY:HA3	2.55	0.42
1:B:296:LEU:O	1:B:296:LEU:HD23	2.19	0.41
1:B:244:VAL:CG1	1:B:246:LEU:HD13	2.51	0.41
1:A:381:VAL:H	1:A:385:THR:CG2	2.34	0.41
1:B:283:VAL:HG21	1:B:363:MET:CE	2.51	0.41
1:B:178:ASP:HA	1:B:220:ARG:HH21	1.86	0.41
1:A:20:HIS:CE1	1:A:311:HIS:ND1	2.76	0.40
1:A:28:ASN:HD22	1:A:29:GLN:N	2.14	0.40
1:A:6:HIS:ND1	1:A:52:ASP:OD2	2.50	0.40
1:B:348:TRP:CZ3	2:B:441:FMN:HM82	2.56	0.40
1:B:136:THR:O	1:B:137:SER:HB2	2.21	0.40
1:B:165:LEU:HD12	1:B:236:PHE:CZ	2.56	0.40
1:B:154:HIS:CD2	1:B:155:ASP:OD1	2.63	0.40
1:B:20:HIS:CE1	1:B:311:HIS:ND1	2.72	0.40

There are no symmetry-related clashes.

5.3 Torsion angles

5.3.1 Protein backbone ⓘ

In the following table, the Percentiles column shows the percent Ramachandran outliers of the chain as a percentile score with respect to all X-ray entries followed by that with respect to entries of similar resolution. The Analysed column shows the number of residues for which the backbone conformation was analysed, and the total number of residues.

Mol	Chain	Analysed	Favoured	Allowed	Outliers	Percentiles	
1	A	431/440 (98%)	420 (97%)	10 (2%)	1 (0%)	56	44
1	B	431/440 (98%)	425 (99%)	5 (1%)	1 (0%)	56	44
All	All	862/880 (98%)	845 (98%)	15 (2%)	2 (0%)	56	44

All (2) Ramachandran outliers are listed below:

Mol	Chain	Res	Type
1	A	220	ARG
1	B	220	ARG

5.3.2 Protein sidechains ⓘ

In the following table, the Percentiles column shows the percent sidechain outliers of the chain as a percentile score with respect to all X-ray entries followed by that with respect to entries of similar resolution. The Analysed column shows the number of residues for which the sidechain conformation was analysed, and the total number of residues.

Mol	Chain	Analysed	Rotameric	Outliers	Percentiles	
1	A	370/379 (98%)	349 (94%)	21 (6%)	29	15
1	B	370/379 (98%)	346 (94%)	24 (6%)	24	11
All	All	740/758 (98%)	695 (94%)	45 (6%)	26	13

All (45) residues with a non-rotameric sidechain are listed below:

Mol	Chain	Res	Type
1	A	13	ASN
1	A	28	ASN
1	A	54	LEU
1	A	135	VAL
1	A	149	LYS
1	A	226	GLN
1	A	229	MET
1	A	246	LEU
1	A	296	LEU
1	A	305	LEU
1	A	309	LEU
1	A	325	SER
1	A	332	ILE
1	A	344	LEU
1	A	366	LEU
1	A	372	ILE
1	A	385	THR
1	A	397	LEU
1	A	399	LYS
1	A	405	VAL
1	A	424	LEU
1	B	11	GLU
1	B	13	ASN
1	B	28	ASN
1	B	54	LEU
1	B	95	VAL
1	B	99	LEU
1	B	135	VAL
1	B	144	LYS

Continued on next page...

Continued from previous page...

Mol	Chain	Res	Type
1	B	149	LYS
1	B	150	LYS
1	B	226	GLN
1	B	246	LEU
1	B	249	LYS
1	B	305	LEU
1	B	309	LEU
1	B	326	ASN
1	B	348	TRP
1	B	372	ILE
1	B	385	THR
1	B	397	LEU
1	B	405	VAL
1	B	406	ASP
1	B	409	GLU
1	B	424	LEU

Some sidechains can be flipped to improve hydrogen bonding and reduce clashes. All (32) such sidechains are listed below:

Mol	Chain	Res	Type
1	A	13	ASN
1	A	20	HIS
1	A	25	HIS
1	A	28	ASN
1	A	29	GLN
1	A	31	HIS
1	A	83	ASN
1	A	111	HIS
1	A	115	HIS
1	A	154	HIS
1	A	219	GLN
1	A	226	GLN
1	A	274	HIS
1	A	379	GLN
1	A	398	GLN
1	A	435	ASN
1	B	13	ASN
1	B	20	HIS
1	B	25	HIS
1	B	28	ASN
1	B	29	GLN
1	B	31	HIS

Continued on next page...

Continued from previous page...

Mol	Chain	Res	Type
1	B	68	GLN
1	B	83	ASN
1	B	111	HIS
1	B	115	HIS
1	B	154	HIS
1	B	219	GLN
1	B	226	GLN
1	B	274	HIS
1	B	379	GLN
1	B	398	GLN

5.3.3 RNA ⓘ

There are no RNA chains in this entry.

5.4 Non-standard residues in protein, DNA, RNA chains ⓘ

There are no non-standard protein/DNA/RNA residues in this entry.

5.5 Carbohydrates ⓘ

There are no carbohydrates in this entry.

5.6 Ligand geometry ⓘ

2 ligands are modelled in this entry.

In the following table, the Counts columns list the number of bonds (or angles) for which Mogul statistics could be retrieved, the number of bonds (or angles) that are observed in the model and the number of bonds (or angles) that are defined in the chemical component dictionary. The Link column lists molecule types, if any, to which the group is linked. The Z score for a bond length (or angle) is the number of standard deviations the observed value is removed from the expected value. A bond length (or angle) with $|Z| > 2$ is considered an outlier worth inspection. RMSZ is the root-mean-square of all Z scores of the bond lengths (or angles).

Mol	Type	Chain	Res	Link	Bond lengths			Bond angles		
					Counts	RMSZ	$\# Z > 2$	Counts	RMSZ	$\# Z > 2$
2	FMN	A	441	-	33,33,33	0.94	1 (3%)	46,50,50	1.73	10 (21%)
2	FMN	B	441	-	33,33,33	0.81	0	46,50,50	1.49	5 (10%)

In the following table, the Chirals column lists the number of chiral outliers, the number of chiral centers analysed, the number of these observed in the model and the number defined in the chemical component dictionary. Similar counts are reported in the Torsion and Rings columns. '-' means no outliers of that kind were identified.

Mol	Type	Chain	Res	Link	Chirals	Torsions	Rings
2	FMN	A	441	-	-	0/18/18/18	0/0/3/3
2	FMN	B	441	-	-	0/18/18/18	0/0/3/3

All (1) bond length outliers are listed below:

Mol	Chain	Res	Type	Atoms	Z	Observed(Å)	Ideal(Å)
2	A	441	FMN	C1'-C2'	2.84	1.54	1.51

All (15) bond angle outliers are listed below:

Mol	Chain	Res	Type	Atoms	Z	Observed(°)	Ideal(°)
2	A	441	FMN	C2-N1-C10	6.94	121.97	114.98
2	B	441	FMN	C2-N1-C10	6.12	121.15	114.98
2	A	441	FMN	C4A-N5-C5A	3.05	120.12	116.69
2	A	441	FMN	C5A-C9A-N10	3.02	119.77	116.80
2	B	441	FMN	C5A-C9A-N10	2.87	119.62	116.80
2	A	441	FMN	C1'-N10-C9A	2.82	121.61	118.87
2	B	441	FMN	C4A-N5-C5A	2.50	119.50	116.69
2	A	441	FMN	C6-C5A-N5	2.38	121.74	118.97
2	B	441	FMN	C4A-C10-N1	-2.19	120.54	122.73
2	A	441	FMN	C4A-C10-N1	-2.16	120.57	122.73
2	A	441	FMN	O3P-P-O2P	2.14	115.94	107.61
2	A	441	FMN	C2'-C1'-N10	-2.11	109.65	112.45
2	B	441	FMN	C1'-N10-C9A	2.06	120.88	118.87
2	A	441	FMN	O3'-C3'-C4'	2.05	113.93	108.74
2	A	441	FMN	C1'-C2'-C3'	2.02	115.60	109.82

There are no chirality outliers.

There are no torsion outliers.

There are no ring outliers.

5.7 Other polymers ⓘ

There are no such residues in this entry.

5.8 Polymer linkage issues

There are no chain breaks in this entry.

6 Fit of model and data ⓘ

6.1 Protein, DNA and RNA chains ⓘ

In the following table, the column labelled ‘#RSRZ> 2’ contains the number (and percentage) of RSRZ outliers, followed by percent RSRZ outliers for the chain as percentile scores relative to all X-ray entries and entries of similar resolution. The OWAB column contains the minimum, median, 95th percentile and maximum values of the occupancy-weighted average B-factor per residue. The column labelled ‘Q< 0.9’ lists the number of (and percentage) of residues with an average occupancy less than 0.9.

Mol	Chain	Analysed	<RSRZ>	#RSRZ>2	OWAB(Å ²)	Q<0.9
1	A	433/440 (98%)	-0.46	5 (1%) 75 78	11, 21, 53, 71	0
1	B	433/440 (98%)	-0.42	6 (1%) 72 74	11, 21, 50, 72	0
All	All	866/880 (98%)	-0.44	11 (1%) 74 75	11, 21, 51, 72	0

All (11) RSRZ outliers are listed below:

Mol	Chain	Res	Type	RSRZ
1	B	331	SER	4.4
1	A	331	SER	3.9
1	B	329	ILE	3.7
1	A	435	ASN	3.4
1	B	435	ASN	3.3
1	B	330	GLY	3.3
1	A	328	TYR	3.0
1	B	149	LYS	2.7
1	A	149	LYS	2.6
1	B	328	TYR	2.5
1	A	329	ILE	2.4

6.2 Non-standard residues in protein, DNA, RNA chains ⓘ

There are no non-standard protein/DNA/RNA residues in this entry.

6.3 Carbohydrates ⓘ

There are no carbohydrates in this entry.

6.4 Ligands

In the following table, the Atoms column lists the number of modelled atoms in the group and the number defined in the chemical component dictionary. LLDF column lists the quality of electron density of the group with respect to its neighbouring residues in protein, DNA or RNA chains. The B-factors column lists the minimum, median, 95th percentile and maximum values of B factors of atoms in the group. The column labelled 'Q< 0.9' lists the number of atoms with occupancy less than 0.9.

Mol	Type	Chain	Res	Atoms	RSR	LLDF	B-factors(Å ²)	Q<0.9
2	FMN	A	441	31/31	0.20	4.56	30,56,83,87	0
2	FMN	B	441	31/31	0.11	0.71	18,31,46,55	0

6.5 Other polymers

There are no such residues in this entry.