



# Full wwPDB X-ray Structure Validation Report ⓘ

Feb 26, 2014 – 08:11 PM GMT

PDB ID : 1BCJ  
Title : MANNOSE-BINDING PROTEIN-A MUTANT (QPDWGHV) COM-  
PLEXED WITH N-ACETYL-D-GALACTOSAMINE  
Authors : Kolatkar, A.R.; Weis, W.I.  
Deposited on : 1998-04-30  
Resolution : 2.10 Å(reported)

This is a full wwPDB validation report for a publicly released PDB entry.  
We welcome your comments at [validation@mail.wwpdb.org](mailto:validation@mail.wwpdb.org)  
A user guide is available at <http://wwpdb.org/ValidationPDFNotes.html>

---

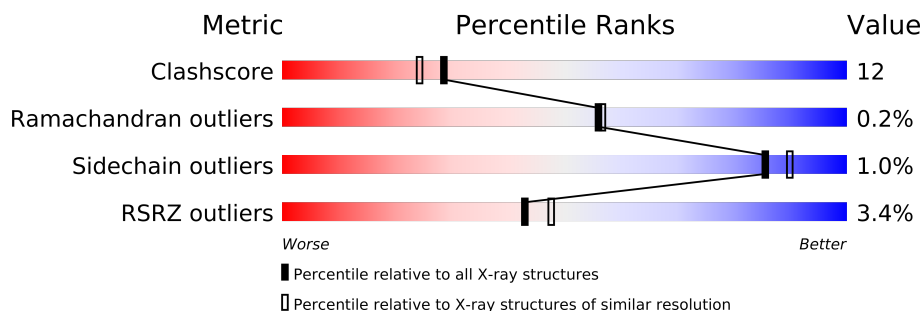
The following versions of software and data (see [references](#)) were used in the production of this report:

MolProbity : 4.02b-467  
Mogul : 1.15 2013  
Xtriage (Phenix) : dev-1323  
EDS : stable22639  
Percentile statistics : 21963  
Refmac : 5.8.0049  
CCP4 : 6.3.0 (Settle)  
Ideal geometry (proteins) : Engh & Huber (2001)  
Ideal geometry (DNA, RNA) : Parkinson et. al. (1996)  
Validation Pipeline (wwPDB-VP) : stable22683

# 1 Overall quality at a glance

The reported resolution of this entry is 2.10 Å.

Percentile scores (ranging between 0-100) for global validation metrics of the entry are shown in the following graphic. The table shows the number of entries on which the scores are based.



Metric	Whole archive (#Entries)	Similar resolution (#Entries, resolution range(Å))
Clashscore	79885	3649 (2.10-2.10)
Ramachandran outliers	78287	3610 (2.10-2.10)
Sidechain outliers	78261	3611 (2.10-2.10)
RSRZ outliers	66119	3013 (2.10-2.10)

The table below summarises the geometric issues observed across the polymeric chains and their fit to the electron density. The red, orange, yellow and green segments on the lower bar indicate the fraction of residues that contain outliers for  $\geq 3$ , 2, 1 and 0 types of geometric quality criteria. The upper red bar (where present) indicates the fraction of residues that have poor fit to the electron density.

Mol	Chain	Length	Quality of chain
1	1	154	
1	2	154	
1	3	154	

## 2 Entry composition

There are 5 unique types of molecules in this entry. The entry contains 3974 atoms, of which 0 are hydrogen and 0 are deuterium.

In the tables below, the ZeroOcc column contains the number of atoms modelled with zero occupancy, the AltConf column contains the number of residues with at least one atom in alternate conformation and the Trace column contains the number of residues modelled with at most 2 atoms.

- Molecule 1 is a protein called MANNOSE-BINDING PROTEIN-A.

Mol	Chain	Residues	Atoms					ZeroOcc	AltConf	Trace
1	1	154	Total	C	N	O	S	0	1	0
			1202	757	208	229	8			
1	2	154	Total	C	N	O	S	0	0	0
			1197	754	206	229	8			
1	3	154	Total	C	N	O	S	0	1	0
			1200	756	206	229	9			

There are 36 discrepancies between the modelled and reference sequences:

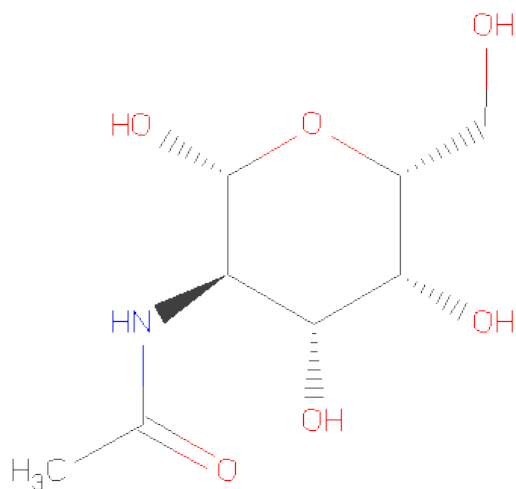
Chain	Residue	Modelled	Actual	Comment	Reference
1	154	VAL	SER	ENGINEERED	UNP P19999
1	185	GLN	GLU	ENGINEERED	UNP P19999
1	187	ASP	ASN	ENGINEERED	UNP P19999
1	189	TRP	HIS	ENGINEERED	UNP P19999
1	190	TYR	GLY	ENGINEERED	UNP P19999
1	191	GLY	SER	ENGINEERED	UNP P19999
1	192	HIS	-	INSERTION	UNP P19999
1	193	GLY	-	INSERTION	UNP P19999
1	194	LEU	-	INSERTION	UNP P19999
1	195	GLY	-	INSERTION	UNP P19999
1	196	GLY	-	INSERTION	UNP P19999
1	202	HIS	THR	ENGINEERED	UNP P19999
2	154	VAL	SER	ENGINEERED	UNP P19999
2	185	GLN	GLU	ENGINEERED	UNP P19999
2	187	ASP	ASN	ENGINEERED	UNP P19999
2	189	TRP	HIS	ENGINEERED	UNP P19999
2	190	TYR	GLY	ENGINEERED	UNP P19999
2	191	GLY	SER	ENGINEERED	UNP P19999
2	192	HIS	-	INSERTION	UNP P19999
2	193	GLY	-	INSERTION	UNP P19999
2	194	LEU	-	INSERTION	UNP P19999
2	195	GLY	-	INSERTION	UNP P19999
2	196	GLY	-	INSERTION	UNP P19999

*Continued on next page...*

Continued from previous page...

Chain	Residue	Modelled	Actual	Comment	Reference
2	202	HIS	THR	ENGINEERED	UNP P19999
3	154	VAL	SER	ENGINEERED	UNP P19999
3	185	GLN	GLU	ENGINEERED	UNP P19999
3	187	ASP	ASN	ENGINEERED	UNP P19999
3	189	TRP	HIS	ENGINEERED	UNP P19999
3	190	TYR	GLY	ENGINEERED	UNP P19999
3	191	GLY	SER	ENGINEERED	UNP P19999
3	192	HIS	-	INSERTION	UNP P19999
3	193	GLY	-	INSERTION	UNP P19999
3	194	LEU	-	INSERTION	UNP P19999
3	195	GLY	-	INSERTION	UNP P19999
3	196	GLY	-	INSERTION	UNP P19999
3	202	HIS	THR	ENGINEERED	UNP P19999

- Molecule 2 is SUGAR (N-ACETYL-D-GALACTOSAMINE) (three-letter code: NGA) (formula:  $C_8H_{15}NO_6$ ).



Mol	Chain	Residues	Atoms				ZeroOcc	AltConf
2	1	1	Total	C	N	O	0	0
			15	8	1	6		
2	2	1	Total	C	N	O	0	0
			15	8	1	6		
2	3	1	Total	C	N	O	0	0
			15	8	1	6		

- Molecule 3 is CALCIUM ION (three-letter code: CA) (formula: Ca).

Mol	Chain	Residues	Atoms	ZeroOcc	AltConf
3	2	3	Total Ca 3 3	0	0
3	1	3	Total Ca 3 3	0	0
3	3	3	Total Ca 3 3	0	0

- Molecule 4 is CHLORIDE ION (three-letter code: CL) (formula: Cl).

Mol	Chain	Residues	Atoms	ZeroOcc	AltConf
4	1	1	Total Cl 1 1	0	0
4	3	1	Total Cl 1 1	0	0

- Molecule 5 is water.

Mol	Chain	Residues	Atoms	ZeroOcc	AltConf
5	1	128	Total O 128 128	0	0
5	2	76	Total O 76 76	0	0
5	3	115	Total O 115 115	0	0



## 4 Data and refinement statistics

Property	Value	Source
Space group	C 1 2 1	Depositor
Cell constants a, b, c, $\alpha$ , $\beta$ , $\gamma$	80.92Å 84.53Å 97.86Å 90.00° 104.49° 90.00°	Depositor
Resolution (Å)	30.00 – 2.10 39.17 – 2.10	Depositor EDS
% Data completeness (in resolution range)	93.4 (30.00-2.10) 93.5 (39.17-2.10)	Depositor EDS
$R_{merge}$	0.06	Depositor
$R_{sym}$	0.06	Depositor
$\langle I/\sigma(I) \rangle$ <sup>1</sup>	3.50 (at 2.10Å)	Xtriage
Refinement program	CNS 0.3C	Depositor
R, $R_{free}$	0.220 , 0.261 0.233 , (Not available)	Depositor DCC
$R_{free}$ test set	No test flags present.	DCC
Wilson B-factor (Å <sup>2</sup> )	30.0	Xtriage
Anisotropy	0.331	Xtriage
Bulk solvent $k_{sol}$ (e/Å <sup>3</sup> ), $B_{sol}$ (Å <sup>2</sup> )	0.32 , 41.3	EDS
Estimated twinning fraction	No twinning to report.	Xtriage
L-test for twinning	$\langle  L  \rangle = 0.47$ , $\langle L^2 \rangle = 0.29$	Xtriage
Outliers	0 of 35683 reflections	Xtriage
$F_o, F_c$ correlation	0.93	EDS
Total number of atoms	3974	wwPDB-VP
Average B, all atoms (Å <sup>2</sup> )	36.0	wwPDB-VP

Xtriage's analysis on translational NCS is as follows: *The largest off-origin peak in the Patterson function is 6.79% of the height of the origin peak. No significant pseudotranslation is detected.*

<sup>1</sup>Intensities estimated from amplitudes.

## 5 Model quality

### 5.1 Standard geometry

Bond lengths and bond angles in the following residue types are not validated in this section: CA, NGA, CL

The Z score for a bond length (or angle) is the number of standard deviations the observed value is removed from the expected value. A bond length (or angle) with  $|Z| > 5$  is considered an outlier worth inspection. RMSZ is the root-mean-square of all Z scores of the bond lengths (or angles).

Mol	Chain	Bond lengths		Bond angles	
		RMSZ	# $ Z  > 5$	RMSZ	# $ Z  > 5$
1	1	0.38	0/1232	0.61	0/1660
1	2	0.34	0/1221	0.56	0/1645
1	3	0.36	0/1229	0.60	0/1655
All	All	0.36	0/3682	0.59	0/4960

There are no bond length outliers.

There are no bond angle outliers.

There are no chirality outliers.

There are no planarity outliers.

### 5.2 Close contacts

In the following table, the Non-H and H(model) columns list the number of non-hydrogen atoms and hydrogen atoms in the chain respectively. The H(added) column lists the number of hydrogens added by MolProbity. The Clashes column lists the number of clashes within the asymmetric unit, and the number in parentheses is this value normalized per 1000 atoms of the molecule in the chain. The Symm-Clashes column gives symmetry related clashes, in the same way as for the Clashes column.

Mol	Chain	Non-H	H(model)	H(added)	Clashes	Symm-Clashes
1	1	1202	0	1174	34	0
1	2	1197	0	1171	33	0
1	3	1200	0	1176	39	0
2	1	15	0	15	0	0
2	2	15	0	13	0	0
2	3	15	0	13	0	0
3	1	3	0	0	0	0
3	2	3	0	0	0	0
3	3	3	0	0	0	0

*Continued on next page...*



*Continued from previous page...*

Mol	Chain	Non-H	H(model)	H(added)	Clashes	Symm-Clashes
4	1	1	0	0	0	0
4	3	1	0	0	0	0
5	1	128	0	0	1	0
5	2	76	0	0	0	0
5	3	115	0	0	1	0
All	All	3974	0	3562	90	0

Clashscore is defined as the number of clashes calculated for the entry per 1000 atoms (including hydrogens) of the entry. The overall clashscore for this entry is 12.

All (90) close contacts within the same asymmetric unit are listed below.

Atom-1	Atom-2	Distance(Å)	Clash(Å)
1:3:138:PRO:HG3	1:3:147:ILE:HD12	1.62	0.80
1:3:118:ARG:HH11	1:3:218:HIS:HA	1.48	0.78
1:2:88:LEU:HD21	1:3:89:LYS:HG2	1.66	0.76
1:2:138:PRO:HD3	1:2:157:LEU:HD22	1.73	0.71
1:3:161:ASP:OD1	1:3:199:ASP:HA	1.94	0.67
1:2:106:LYS:HD2	1:3:117:GLU:HG3	1.79	0.65
1:1:121:PHE:CE2	1:1:125:LYS:HD2	2.32	0.64
1:3:120:PRO:HD2	1:3:123:LYS:HG3	1.79	0.64
1:1:160:THR:HB	1:1:199:ASP:O	1.98	0.63
1:1:138:PRO:HG3	1:1:147:ILE:HD12	1.81	0.63
1:2:140:ASN:HA	1:2:178:TYR:CD2	2.34	0.62
1:3:118:ARG:NH1	1:3:218:HIS:HA	2.14	0.62
1:1:74:ILE:HG23	1:1:75:GLU:N	2.14	0.61
1:3:205:ASP:O	1:3:206:ASN:HB3	2.00	0.61
1:2:183:LYS:O	1:2:184:ASP:HB2	2.00	0.61
1:2:89:LYS:O	1:2:93:GLU:HG3	2.02	0.60
1:1:82:GLU:HB2	1:3:81:MET:HE1	1.83	0.60
1:1:161:ASP:OD1	1:1:199:ASP:HA	2.01	0.60
1:1:97:LYS:NZ	1:1:97:LYS:HB3	2.16	0.60
1:1:117:GLU:HB2	1:3:106:LYS:HD2	1.84	0.58
1:1:105:LYS:HG3	1:1:111:PHE:HB3	1.84	0.58
1:1:89:LYS:HG2	1:3:88:LEU:HD21	1.85	0.58
1:1:97:LYS:HB3	1:1:97:LYS:HZ3	1.68	0.58
1:1:127:LEU:HD23	1:1:127:LEU:C	2.24	0.58
1:3:99:HIS:CE1	1:3:103[B]:MET:SD	2.98	0.57
1:2:161:ASP:OD1	1:2:199:ASP:HA	2.04	0.56
1:1:82:GLU:HB2	1:3:81:MET:CE	2.35	0.56
1:3:206:ASN:HD22	1:3:208:LEU:HG	1.71	0.55
1:2:212:ILE:HG13	1:2:213:SER:N	2.22	0.55
1:3:140:ASN:OD1	1:3:142:GLU:HB3	2.06	0.55

*Continued on next page...*

*Continued from previous page...*

Atom-1	Atom-2	Distance(Å)	Clash(Å)
1:1:78:LEU:HD11	1:3:74:ILE:HG23	1.89	0.54
1:1:124:VAL:HG12	1:1:135:VAL:HG22	1.90	0.54
1:1:118:ARG:NH2	1:1:218:HIS:ND1	2.54	0.54
1:2:91:LYS:NZ	1:2:91:LYS:HB3	2.23	0.53
1:2:155:ALA:HB2	1:2:219:THR:HB	1.90	0.53
1:2:204:VAL:HG12	1:2:205:ASP:N	2.23	0.53
1:2:121:PHE:CE2	1:2:125:LYS:HD3	2.44	0.53
1:2:160:THR:HB	1:2:162:GLU:HG3	1.90	0.52
1:3:103[B]:MET:HE3	1:3:111:PHE:CE2	2.45	0.52
1:2:175:ARG:HG3	1:2:175:ARG:HH11	1.75	0.52
1:2:77:LYS:HD2	1:3:78:LEU:CD2	2.40	0.51
1:3:145:LYS:O	1:3:149:GLU:HG3	2.10	0.51
1:1:88:LEU:HD23	1:3:88:LEU:HD13	1.93	0.51
1:3:151:ALA:C	1:3:153:THR:H	2.13	0.51
1:1:74:ILE:CG2	1:1:75:GLU:N	2.73	0.50
1:3:138:PRO:HG3	1:3:147:ILE:CD1	2.39	0.50
1:1:204:VAL:HB	5:1:323:HOH:O	2.12	0.50
1:1:78:LEU:HD21	1:3:78:LEU:HD13	1.93	0.49
1:2:77:LYS:HD2	1:3:78:LEU:HD23	1.95	0.49
1:3:183:LYS:O	1:3:184:ASP:HB2	2.12	0.49
1:2:140:ASN:OD1	1:2:142:GLU:HB3	2.14	0.48
1:1:127:LEU:HD23	1:1:127:LEU:O	2.13	0.48
1:1:152:LYS:NZ	1:1:152:LYS:HB2	2.29	0.48
1:3:179:SER:HA	1:3:209:TRP:CH2	2.48	0.48
1:2:87:THR:O	1:2:91:LYS:HG3	2.13	0.47
1:3:120:PRO:HD2	1:3:123:LYS:CG	2.44	0.47
1:1:202:HIS:HE2	1:1:210:ASN:HD22	1.64	0.46
1:2:204:VAL:HG12	1:2:205:ASP:H	1.81	0.45
1:1:187:ASP:O	1:1:188:ASP:C	2.54	0.45
1:1:99[B]:HIS:CD2	1:2:99:HIS:CD2	3.04	0.44
1:2:77:LYS:HD3	1:3:82:GLU:OE2	2.18	0.44
1:3:197:GLY:N	5:3:265:HOH:O	2.50	0.43
1:2:151:ALA:C	1:2:153:THR:H	2.20	0.43
1:3:137:ILE:HA	1:3:138:PRO:HD3	1.86	0.43
1:2:200:CYS:O	1:2:211:ASP:HA	2.19	0.43
1:1:152:LYS:HZ2	1:1:152:LYS:HB2	1.83	0.43
1:3:180:ASN:ND2	1:3:207:GLY:O	2.51	0.43
1:1:78:LEU:CD1	1:3:74:ILE:HG23	2.49	0.42
1:1:152:LYS:CB	1:1:152:LYS:NZ	2.82	0.42
1:2:120:PRO:HA	1:2:216:ALA:O	2.19	0.42
1:1:117:GLU:HB2	1:3:106:LYS:CD	2.48	0.42
1:1:127:LEU:CD2	1:1:127:LEU:C	2.88	0.42

*Continued on next page...*

Continued from previous page...

Atom-1	Atom-2	Distance(Å)	Clash(Å)
1:2:212:ILE:HG13	1:2:213:SER:H	1.82	0.42
1:1:140:ASN:OD1	1:1:143:GLU:HG3	2.20	0.42
1:2:178:TYR:CD1	1:2:178:TYR:C	2.92	0.42
1:3:119:MET:HG3	1:3:124:VAL:HG23	2.01	0.42
1:3:99:HIS:O	1:3:103[B]:MET:HG3	2.19	0.42
1:3:224:PHE:HA	1:3:225:PRO:HD3	1.88	0.42
1:2:135:VAL:O	1:2:137:ILE:HG13	2.20	0.41
1:1:83:ALA:O	1:1:87:THR:HG23	2.19	0.41
1:2:81:MET:HE1	1:3:81:MET:HB2	2.03	0.41
1:2:137:ILE:HG23	1:2:159:ILE:HD11	2.01	0.41
1:1:131:LEU:O	1:1:132:ARG:HB2	2.20	0.41
1:3:131:LEU:O	1:3:132:ARG:HB2	2.21	0.41
1:2:159:ILE:HD12	1:2:170:TYR:CD1	2.55	0.41
1:3:203:ILE:O	1:3:203:ILE:HG23	2.20	0.41
1:2:170:TYR:HB2	1:2:173:GLY:O	2.21	0.40
1:2:181:TRP:HA	1:2:209:TRP:HB2	2.04	0.40
1:2:74:ILE:HG13	1:2:75:GLU:N	2.37	0.40

There are no symmetry-related clashes.

## 5.3 Torsion angles

### 5.3.1 Protein backbone ⓘ

In the following table, the Percentiles column shows the percent Ramachandran outliers of the chain as a percentile score with respect to all X-ray entries followed by that with respect to entries of similar resolution. The Analysed column shows the number of residues for which the backbone conformation was analysed, and the total number of residues.

Mol	Chain	Analysed	Favoured	Allowed	Outliers	Percentiles	
1	1	153/154 (99%)	146 (95%)	7 (5%)	0	100	100
1	2	152/154 (99%)	140 (92%)	12 (8%)	0	100	100
1	3	153/154 (99%)	147 (96%)	5 (3%)	1 (1%)	30	23
All	All	458/462 (99%)	433 (94%)	24 (5%)	1 (0%)	56	57

All (1) Ramachandran outliers are listed below:

Mol	Chain	Res	Type
1	3	204	VAL

### 5.3.2 Protein sidechains ⓘ

In the following table, the Percentiles column shows the percent sidechain outliers of the chain as a percentile score with respect to all X-ray entries followed by that with respect to entries of similar resolution. The Analysed column shows the number of residues for which the sidechain conformation was analysed, and the total number of residues.

Mol	Chain	Analysed	Rotameric	Outliers	Percentiles	
1	1	129/128 (101%)	128 (99%)	1 (1%)	89	93
1	2	128/128 (100%)	127 (99%)	1 (1%)	89	93
1	3	129/128 (101%)	127 (98%)	2 (2%)	75	79
All	All	386/384 (100%)	382 (99%)	4 (1%)	85	90

All (4) residues with a non-rotameric sidechain are listed below:

Mol	Chain	Res	Type
1	1	202	HIS
1	2	202	HIS
1	3	142	GLU
1	3	202	HIS

Some sidechains can be flipped to improve hydrogen bonding and reduce clashes. All (9) such sidechains are listed below:

Mol	Chain	Res	Type
1	1	96	ASN
1	1	148	GLN
1	2	80	ASN
1	2	96	ASN
1	2	180	ASN
1	2	215	GLN
1	3	96	ASN
1	3	167	GLN
1	3	206	ASN

### 5.3.3 RNA ⓘ

There are no RNA chains in this entry.

## 5.4 Non-standard residues in protein, DNA, RNA chains ⓘ

There are no non-standard protein/DNA/RNA residues in this entry.

## 5.5 Carbohydrates ⓘ

There are no carbohydrates in this entry.

## 5.6 Ligand geometry ⓘ

Of 14 ligands modelled in this entry, 11 are monoatomic - leaving 3 for Mogul analysis.

In the following table, the Counts columns list the number of bonds (or angles) for which Mogul statistics could be retrieved, the number of bonds (or angles) that are observed in the model and the number of bonds (or angles) that are defined in the chemical component dictionary. The Link column lists molecule types, if any, to which the group is linked. The Z score for a bond length (or angle) is the number of standard deviations the observed value is removed from the expected value. A bond length (or angle) with  $|Z| > 2$  is considered an outlier worth inspection. RMSZ is the root-mean-square of all Z scores of the bond lengths (or angles).

Mol	Type	Chain	Res	Link	Bond lengths			Bond angles		
					Counts	RMSZ	$\# Z  > 2$	Counts	RMSZ	$\# Z  > 2$
2	NGA	1	1	3	15,15,15	0.50	0	21,21,21	0.58	0
2	NGA	2	1	3	15,15,15	0.37	0	21,21,21	0.52	0
2	NGA	3	1	3	15,15,15	0.53	0	21,21,21	0.75	0

In the following table, the Chirals column lists the number of chiral outliers, the number of chiral centers analysed, the number of these observed in the model and the number defined in the chemical component dictionary. Similar counts are reported in the Torsion and Rings columns. '-' means no outliers of that kind were identified.

Mol	Type	Chain	Res	Link	Chirals	Torsions	Rings
2	NGA	1	1	3	-	0/6/26/26	0/1/1/1
2	NGA	2	1	3	-	0/6/26/26	0/1/1/1
2	NGA	3	1	3	-	0/6/26/26	0/1/1/1

There are no bond length outliers.

There are no bond angle outliers.

There are no chirality outliers.

There are no torsion outliers.

There are no ring outliers.

## 5.7 Other polymers ⓘ

There are no such residues in this entry.

## 5.8 Polymer linkage issues

There are no chain breaks in this entry.

## 6 Fit of model and data ⓘ

### 6.1 Protein, DNA and RNA chains ⓘ

In the following table, the column labelled ‘#RSRZ> 2’ contains the number (and percentage) of RSRZ outliers, followed by percent RSRZ outliers for the chain as percentile scores relative to all X-ray entries and entries of similar resolution. The OWAB column contains the minimum, median, 95<sup>th</sup> percentile and maximum values of the occupancy-weighted average B-factor per residue. The column labelled ‘Q< 0.9’ lists the number of (and percentage) of residues with an average occupancy less than 0.9.

Mol	Chain	Analysed	<RSRZ>	#RSRZ>2	OWAB(Å <sup>2</sup> )	Q<0.9
1	1	154/154 (100%)	0.07	3 (1%) 64 68	18, 30, 44, 51	0
1	2	154/154 (100%)	0.53	13 (8%) 11 12	21, 43, 66, 81	0
1	3	154/154 (100%)	-0.09	0 100 100	21, 32, 46, 59	0
All	All	462/462 (100%)	0.17	16 (3%) 43 46	18, 34, 53, 81	0

All (16) RSRZ outliers are listed below:

Mol	Chain	Res	Type	RSRZ
1	2	193	GLY	5.4
1	2	194	LEU	4.0
1	2	203	ILE	3.5
1	2	205	ASP	3.2
1	1	99[A]	HIS	3.0
1	2	196	GLY	2.8
1	2	183	LYS	2.7
1	2	216	ALA	2.5
1	2	182	LYS	2.4
1	2	155	ALA	2.4
1	2	213	SER	2.2
1	2	191	GLY	2.2
1	2	142	GLU	2.2
1	1	190	TYR	2.2
1	2	204	VAL	2.1
1	1	205	ASP	2.0

### 6.2 Non-standard residues in protein, DNA, RNA chains ⓘ

There are no non-standard protein/DNA/RNA residues in this entry.

### 6.3 Carbohydrates ⓘ

There are no carbohydrates in this entry.

### 6.4 Ligands ⓘ

In the following table, the Atoms column lists the number of modelled atoms in the group and the number defined in the chemical component dictionary. LLDF column lists the quality of electron density of the group with respect to its neighbouring residues in protein, DNA or RNA chains. The B-factors column lists the minimum, median, 95<sup>th</sup> percentile and maximum values of B factors of atoms in the group. The column labelled 'Q< 0.9' lists the number of atoms with occupancy less than 0.9.

Mol	Type	Chain	Res	Atoms	RSR	LLDF	B-factors(Å <sup>2</sup> )	Q<0.9
3	CA	1	227	1/1	0.12	0.88	27,27,27,27	0
2	NGA	2	1	15/15	0.24	0.79	65,69,70,70	0
2	NGA	3	1	15/15	0.13	0.48	35,40,44,46	0
2	NGA	1	1	15/15	0.11	-0.48	31,35,39,43	0
3	CA	1	3	1/1	0.07	-0.93	28,28,28,28	0
4	CL	1	4	1/1	0.07	-0.95	41,41,41,41	0
3	CA	3	3	1/1	0.08	-1.15	27,27,27,27	0
3	CA	2	2	1/1	0.10	-1.41	53,53,53,53	0
4	CL	3	4	1/1	0.05	-1.78	35,35,35,35	0
3	CA	3	2	1/1	0.08	-2.26	31,31,31,31	0
3	CA	3	227	1/1	0.07	-2.28	28,28,28,28	0
3	CA	1	2	1/1	0.06	-3.08	28,28,28,28	0
3	CA	2	227	1/1	0.05	-3.99	41,41,41,41	0
3	CA	2	3	1/1	0.05	-4.77	44,44,44,44	0

### 6.5 Other polymers ⓘ

There are no such residues in this entry.