



# Full wwPDB X-ray Structure Validation Report

Feb 27, 2014 – 02:59 PM GMT

PDB ID : 4BCN  
Title : Structure of CDK2 in complex with cyclin A and a 2-amino-4-heteroaryl  
-pyrimidine inhibitor  
Authors : Hole, A.J.; Baumli, S.; Wang, S.; Endicott, J.A.; Noble, M.E.M.  
Deposited on : 2012-10-02  
Resolution : 2.10 Å(reported)

This is a full wwPDB validation report for a publicly released PDB entry.  
We welcome your comments at [validation@mail.wwpdb.org](mailto:validation@mail.wwpdb.org)  
A user guide is available at <http://wwpdb.org/ValidationPDFNotes.html>

---

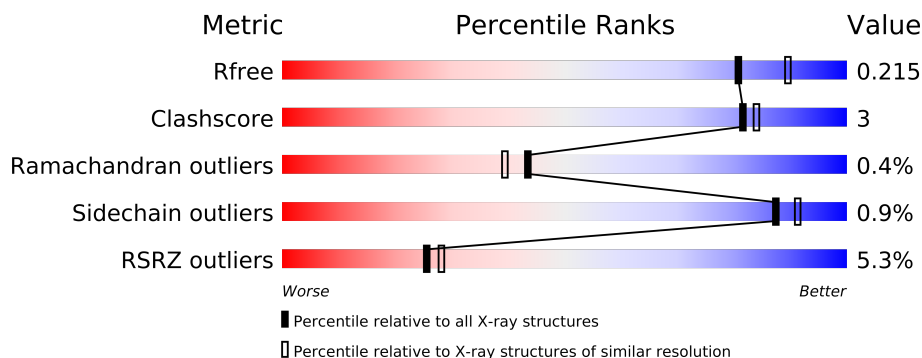
The following versions of software and data (see [references](#)) were used in the production of this report:

MolProbity : 4.02b-467  
Mogul : 1.15 2013  
Xtriage (Phenix) : dev-1323  
EDS : stable22639  
Percentile statistics : 21963  
Refmac : 5.8.0049  
CCP4 : 6.3.0 (Settle)  
Ideal geometry (proteins) : Engh & Huber (2001)  
Ideal geometry (DNA, RNA) : Parkinson et. al. (1996)  
Validation Pipeline (wwPDB-VP) : stable22683

# 1 Overall quality at a glance

The reported resolution of this entry is 2.10 Å.

Percentile scores (ranging between 0-100) for global validation metrics of the entry are shown in the following graphic. The table shows the number of entries on which the scores are based.



Metric	Whole archive (#Entries)	Similar resolution (#Entries, resolution range(Å))
$R_{free}$	66092	3012 (2.10-2.10)
Clashscore	79885	3649 (2.10-2.10)
Ramachandran outliers	78287	3610 (2.10-2.10)
Sidechain outliers	78261	3611 (2.10-2.10)
RSRZ outliers	66119	3013 (2.10-2.10)

The table below summarises the geometric issues observed across the polymeric chains and their fit to the electron density. The red, orange, yellow and green segments on the lower bar indicate the fraction of residues that contain outliers for  $\geq 3$ , 2, 1 and 0 types of geometric quality criteria. The upper red bar (where present) indicates the fraction of residues that have poor fit to the electron density.

Mol	Chain	Length	Quality of chain
1	A	300	
1	C	300	
2	B	262	
3	D	262	

## 2 Entry composition

There are 6 unique types of molecules in this entry. The entry contains 9678 atoms, of which 0 are hydrogen and 0 are deuterium.

In the tables below, the ZeroOcc column contains the number of atoms modelled with zero occupancy, the AltConf column contains the number of residues with at least one atom in alternate conformation and the Trace column contains the number of residues modelled with at most 2 atoms.

- Molecule 1 is a protein called CYCLIN-DEPENDENT KINASE 2.

Mol	Chain	Residues	Atoms						ZeroOcc	AltConf	Trace
1	A	297	Total	C	N	O	P	S	0	1	0
			2398	1558	409	422	1	8			
1	C	296	Total	C	N	O	P	S	0	0	0
			2374	1540	401	424	1	8			

There are 4 discrepancies between the modelled and reference sequences:

Chain	Residue	Modelled	Actual	Comment	Reference
A	-1	GLY	-	EXPRESSION TAG	UNP P24941
A	0	SER	-	EXPRESSION TAG	UNP P24941
C	-1	GLY	-	EXPRESSION TAG	UNP P24941
C	0	SER	-	EXPRESSION TAG	UNP P24941

- Molecule 2 is a protein called CYCLIN-A2.

Mol	Chain	Residues	Atoms						ZeroOcc	AltConf	Trace
2	B	257	Total	C	N	O	S		0	2	0
			2092	1357	344	381	10				

There are 4 discrepancies between the modelled and reference sequences:

Chain	Residue	Modelled	Actual	Comment	Reference
B	357	ALA	GLY	CONFLICT	UNP P20248
B	392	LEU	MET	CONFLICT	UNP P20248
B	400	ARG	LYS	CONFLICT	UNP P20248
B	403	LYS	GLN	CONFLICT	UNP P20248

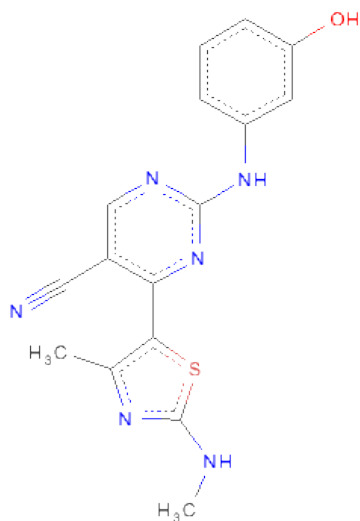
- Molecule 3 is a protein called CYCLIN-A2.

Mol	Chain	Residues	Atoms						ZeroOcc	AltConf	Trace
3	D	255	Total	C	N	O	S		0	1	0
			2069	1340	339	380	10				

There are 3 discrepancies between the modelled and reference sequences:

Chain	Residue	Modelled	Actual	Comment	Reference
D	432	VAL	-	EXPRESSION TAG	UNP P20248
D	357	ALA	GLY	CONFLICT	UNP P20248
D	392	LEU	MET	CONFLICT	UNP P20248

- Molecule 4 is 2-[(3-HYDROXYPHENYL)AMINO]-4-[4-METHYL-2-(METHYLAMINO)-1,3-THIAZOL-5-YL]PYRIMIDINE-5-CARBONITRILE (three-letter code: T9N) (formula: C<sub>16</sub>H<sub>14</sub>N<sub>6</sub>OS).



Mol	Chain	Residues	Atoms					ZeroOcc	AltConf
4	A	1	Total	C	N	O	S	0	0
			24	16	6	1	1		
4	C	1	Total	C	N	O	S	0	0
			24	16	6	1	1		

- Molecule 5 is SULFATE ION (three-letter code: SO<sub>4</sub>) (formula: O<sub>4</sub>S).



Mol	Chain	Residues	Atoms			ZeroOcc	AltConf
5	B	1	Total	O	S	0	0
			5	4	1		
5	D	1	Total	O	S	0	0
			5	4	1		

- Molecule 6 is water.

Mol	Chain	Residues	Atoms		ZeroOcc	AltConf
6	A	288	Total	O	0	0
			288	288		
6	B	199	Total	O	0	0
			199	199		
6	C	110	Total	O	0	0
			110	110		
6	D	90	Total	O	0	0
			90	90		



## 4 Data and refinement statistics

Property	Value	Source
Space group	P 21 21 21	Depositor
Cell constants a, b, c, $\alpha$ , $\beta$ , $\gamma$	74.05Å 135.08Å 148.19Å 90.00° 90.00° 90.00°	Depositor
Resolution (Å)	49.91 – 2.10 49.91 – 2.10	Depositor EDS
% Data completeness (in resolution range)	99.8 (49.91-2.10) 99.8 (49.91-2.10)	Depositor EDS
$R_{merge}$	0.08	Depositor
$R_{sym}$	(Not available)	Depositor
$\langle I/\sigma(I) \rangle$ <sup>1</sup>	2.29 (at 2.10Å)	Xtriage
Refinement program	PHENIX (PHENIX.REFINE)	Depositor
R, $R_{free}$	0.184 , 0.219 0.178 , 0.215	Depositor DCC
$R_{free}$ test set	4380 reflections (5.02%)	DCC
Wilson B-factor (Å <sup>2</sup> )	31.0	Xtriage
Anisotropy	0.190	Xtriage
Bulk solvent $k_{sol}$ (e/Å <sup>3</sup> ), $B_{sol}$ (Å <sup>2</sup> )	0.38 , 43.9	EDS
Estimated twinning fraction	No twinning to report.	Xtriage
L-test for twinning	$\langle  L  \rangle = 0.49$ , $\langle L^2 \rangle = 0.32$	Xtriage
Outliers	0 of 87260 reflections	Xtriage
$F_o, F_c$ correlation	0.95	EDS
Total number of atoms	9678	wwPDB-VP
Average B, all atoms (Å <sup>2</sup> )	41.0	wwPDB-VP

Xtriage's analysis on translational NCS is as follows: *The largest off-origin peak in the Patterson function is 3.01% of the height of the origin peak. No significant pseudotranslation is detected.*

<sup>1</sup>Intensities estimated from amplitudes.

## 5 Model quality

### 5.1 Standard geometry

Bond lengths and bond angles in the following residue types are not validated in this section: TPO, T9N, SO4

The Z score for a bond length (or angle) is the number of standard deviations the observed value is removed from the expected value. A bond length (or angle) with  $|Z| > 5$  is considered an outlier worth inspection. RMSZ is the root-mean-square of all Z scores of the bond lengths (or angles).

Mol	Chain	Bond lengths		Bond angles	
		RMSZ	$\# Z  > 5$	RMSZ	$\# Z  > 5$
1	A	0.27	0/2451	0.44	0/3323
1	C	0.23	0/2423	0.42	0/3287
2	B	0.26	0/2150	0.43	0/2919
3	D	0.23	0/2121	0.40	0/2879
All	All	0.25	0/9145	0.42	0/12408

There are no bond length outliers.

There are no bond angle outliers.

There are no chirality outliers.

There are no planarity outliers.

### 5.2 Close contacts

In the following table, the Non-H and H(model) columns list the number of non-hydrogen atoms and hydrogen atoms in the chain respectively. The H(added) column lists the number of hydrogens added by MolProbity. The Clashes column lists the number of clashes within the asymmetric unit, and the number in parentheses is this value normalized per 1000 atoms of the molecule in the chain. The Symm-Clashes column gives symmetry related clashes, in the same way as for the Clashes column.

Mol	Chain	Non-H	H(model)	H(added)	Clashes	Symm-Clashes
1	A	2398	0	7	11	0
1	C	2374	0	10	7	0
2	B	2092	0	0	8	0
3	D	2069	0	0	4	0
4	A	24	0	14	2	0
4	C	24	0	14	3	0
5	B	5	0	0	0	0
5	D	5	0	0	0	0

*Continued on next page...*



*Continued from previous page...*

Mol	Chain	Non-H	H(model)	H(added)	Clashes	Symm-Clashes
6	A	288	0	0	3	0
6	B	199	0	0	1	0
6	C	110	0	0	3	0
6	D	90	0	0	1	0
All	All	9678	0	45	29	0

Clashscore is defined as the number of clashes calculated for the entry per 1000 atoms (including hydrogens) of the entry. The overall clashscore for this entry is 3.

All (29) close contacts within the same asymmetric unit are listed below.

Atom-1	Atom-2	Distance(Å)	Clash(Å)
3:D:203:GLN:O	6:D:2016:HOH:O	2.14	0.65
4:C:1296:T9N:H13	4:C:1296:T9N:N09	2.17	0.60
1:C:217:ARG:NH1	6:C:2103:HOH:O	2.37	0.58
1:C:13:GLY:O	1:C:14:THR:CB	2.53	0.57
4:A:1299:T9N:H13	4:A:1299:T9N:N09	2.20	0.56
1:A:278:LYS:NZ	2:B:181:ASP:OD2	2.39	0.56
1:C:71:HIS:CE1	3:D:304:PHE:CE2	2.94	0.55
1:C:224:GLU:OE2	1:C:229:GLY:N	2.44	0.50
2:B:300:LYS:NZ	6:B:2126:HOH:O	2.45	0.50
6:C:2021:HOH:O	3:D:288:LYS:NZ	2.43	0.50
1:A:71:HIS:NE2	2:B:296[B]:HIS:ND1	2.60	0.49
2:B:176:PRO:O	2:B:179[A]:HIS:ND1	2.46	0.48
1:A:72:THR:CG2	1:A:73:GLU:N	2.76	0.48
1:A:71:HIS:NE2	2:B:296[A]:HIS:CD2	2.84	0.46
2:B:199:TYR:C	2:B:199:TYR:CD1	2.90	0.44
1:A:224:GLU:OE1	1:A:229:GLY:N	2.50	0.44
1:A:6:LYS:NZ	6:A:2008:HOH:O	2.51	0.44
3:D:337:GLY:O	3:D:340:SER:OG	2.36	0.43
1:A:268:HIS:CD2	6:A:2220:HOH:O	2.72	0.43
4:C:1296:T9N:C13	4:C:1296:T9N:N09	2.83	0.42
1:C:83:LEU:O	4:C:1296:T9N:N11	2.53	0.42
1:A:81:GLU:OE2	1:A:142:LYS:NZ	2.52	0.42
1:C:178:LYS:N	6:C:2095:HOH:O	2.52	0.42
1:A:224:GLU:OE2	1:A:231:THR:OG1	2.38	0.41
2:B:266:LYS:NZ	2:B:295:GLU:OE2	2.54	0.41
1:C:101:LEU:N	1:C:102:PRO:CD	2.84	0.40
4:A:1299:T9N:H013	6:A:2133:HOH:O	2.21	0.40
1:A:161[B]:HIS:ND1	1:A:162:GLU:N	2.70	0.40
1:A:71:HIS:CE1	2:B:296[A]:HIS:CD2	3.10	0.40

There are no symmetry-related clashes.

## 5.3 Torsion angles

### 5.3.1 Protein backbone ⓘ

In the following table, the Percentiles column shows the percent Ramachandran outliers of the chain as a percentile score with respect to all X-ray entries followed by that with respect to entries of similar resolution. The Analysed column shows the number of residues for which the backbone conformation was analysed, and the total number of residues.

Mol	Chain	Analysed	Favoured	Allowed	Outliers	Percentiles	
1	A	293/300 (98%)	283 (97%)	9 (3%)	1 (0%)	50	49
1	C	293/300 (98%)	285 (97%)	5 (2%)	3 (1%)	22	14
2	B	257/262 (98%)	255 (99%)	2 (1%)	0	100	100
3	D	254/262 (97%)	249 (98%)	5 (2%)	0	100	100
All	All	1097/1124 (98%)	1072 (98%)	21 (2%)	4 (0%)	43	39

All (4) Ramachandran outliers are listed below:

Mol	Chain	Res	Type
1	C	14	THR
1	C	164	VAL
1	A	164	VAL
1	C	145	ASP

### 5.3.2 Protein sidechains ⓘ

In the following table, the Percentiles column shows the percent sidechain outliers of the chain as a percentile score with respect to all X-ray entries followed by that with respect to entries of similar resolution. The Analysed column shows the number of residues for which the sidechain conformation was analysed, and the total number of residues.

Mol	Chain	Analysed	Rotameric	Outliers	Percentiles	
1	A	262/263 (100%)	258 (98%)	4 (2%)	76	81
1	C	259/263 (98%)	255 (98%)	4 (2%)	76	81
2	B	233/236 (99%)	232 (100%)	1 (0%)	95	97
3	D	230/236 (98%)	230 (100%)	0	100	100
All	All	984/998 (99%)	975 (99%)	9 (1%)	87	91

All (9) residues with a non-rotameric sidechain are listed below:

Mol	Chain	Res	Type
1	A	12	GLU
1	A	14	THR
1	A	72	THR
1	A	122	ARG
2	B	199	TYR
1	C	15	TYR
1	C	70	ILE
1	C	122	ARG
1	C	248	PHE

Some sidechains can be flipped to improve hydrogen bonding and reduce clashes. There are no such sidechains identified.

### 5.3.3 RNA ⓘ

There are no RNA chains in this entry.

## 5.4 Non-standard residues in protein, DNA, RNA chains ⓘ

2 non-standard protein/DNA/RNA residues are modelled in this entry.

In the following table, the Counts columns list the number of bonds (or angles) for which Mogul statistics could be retrieved, the number of bonds (or angles) that are observed in the model and the number of bonds (or angles) that are defined in the chemical component dictionary. The Link column lists molecule types, if any, to which the group is linked. The Z score for a bond length (or angle) is the number of standard deviations the observed value is removed from the expected value. A bond length (or angle) with  $|Z| > 2$  is considered an outlier worth inspection. RMSZ is the root-mean-square of all Z scores of the bond lengths (or angles).

Mol	Type	Chain	Res	Link	Bond lengths			Bond angles		
					Counts	RMSZ	$\# Z  > 2$	Counts	RMSZ	$\# Z  > 2$
1	TPO	A	160	1	10,10,11	5.60	2 (20%)	12,14,16	0.91	0
1	TPO	C	160	1	10,10,11	5.65	2 (20%)	12,14,16	1.06	1 (8%)

In the following table, the Chirals column lists the number of chiral outliers, the number of chiral centers analysed, the number of these observed in the model and the number defined in the chemical component dictionary. Similar counts are reported in the Torsion and Rings columns. '-' means no outliers of that kind were identified.

Mol	Type	Chain	Res	Link	Chirals	Torsions	Rings
1	TPO	A	160	1	-	0/9/11/13	0/0/0/0
1	TPO	C	160	1	-	0/9/11/13	0/0/0/0

All (4) bond length outliers are listed below:

Mol	Chain	Res	Type	Atoms	Z	Observed(Å)	Ideal(Å)
1	C	160	TPO	O-C	17.39	1.23	1.11
1	A	160	TPO	O-C	17.20	1.23	1.11
1	A	160	TPO	CA-C	2.93	1.53	1.48
1	C	160	TPO	CA-C	2.71	1.53	1.48

All (1) bond angle outliers are listed below:

Mol	Chain	Res	Type	Atoms	Z	Observed(°)	Ideal(°)
1	C	160	TPO	P-OG1-CB	-2.60	108.71	120.17

There are no chirality outliers.

There are no torsion outliers.

There are no ring outliers.

## 5.5 Carbohydrates ⓘ

There are no carbohydrates in this entry.

## 5.6 Ligand geometry ⓘ

4 ligands are modelled in this entry.

In the following table, the Counts columns list the number of bonds (or angles) for which Mogul statistics could be retrieved, the number of bonds (or angles) that are observed in the model and the number of bonds (or angles) that are defined in the chemical component dictionary. The Link column lists molecule types, if any, to which the group is linked. The Z score for a bond length (or angle) is the number of standard deviations the observed value is removed from the expected value. A bond length (or angle) with  $|Z| > 2$  is considered an outlier worth inspection. RMSZ is the root-mean-square of all Z scores of the bond lengths (or angles).

Mol	Type	Chain	Res	Link	Bond lengths			Bond angles		
					Counts	RMSZ	$\# Z  > 2$	Counts	RMSZ	$\# Z  > 2$
4	T9N	A	1299	-	26,26,26	2.95	7 (26%)	34,36,36	4.95	15 (44%)
5	SO4	B	1433	-	4,4,4	0.24	0	6,6,6	0.14	0
4	T9N	C	1296	-	26,26,26	2.96	8 (30%)	34,36,36	4.98	13 (38%)
5	SO4	D	1432	-	4,4,4	0.20	0	6,6,6	0.08	0

In the following table, the Chirals column lists the number of chiral outliers, the number of chiral centers analysed, the number of these observed in the model and the number defined in the chemical

component dictionary. Similar counts are reported in the Torsion and Rings columns. '-' means no outliers of that kind were identified.

Mol	Type	Chain	Res	Link	Chirals	Torsions	Rings
4	T9N	A	1299	-	-	0/7/12/12	0/3/3/3
5	SO4	B	1433	-	-	0/0/0/0	0/0/0/0
4	T9N	C	1296	-	-	0/7/12/12	0/3/3/3
5	SO4	D	1432	-	-	0/0/0/0	0/0/0/0

All (15) bond length outliers are listed below:

Mol	Chain	Res	Type	Atoms	Z	Observed(Å)	Ideal(Å)
4	A	1299	T9N	C13-C14	8.16	1.52	1.39
4	C	1296	T9N	C13-C14	7.95	1.52	1.39
4	C	1296	T9N	C18-C12	6.86	1.50	1.39
4	A	1299	T9N	C18-C12	6.72	1.50	1.39
4	A	1299	T9N	C03-N02	5.90	1.44	1.35
4	C	1296	T9N	C03-N02	5.77	1.44	1.35
4	C	1296	T9N	C10-N11	4.85	1.44	1.36
4	A	1299	T9N	C10-N11	4.67	1.43	1.36
4	C	1296	T9N	C17-C16	4.25	1.48	1.39
4	A	1299	T9N	C17-C16	4.00	1.48	1.39
4	A	1299	T9N	C07-C05	3.41	1.46	1.37
4	C	1296	T9N	C07-C05	3.41	1.46	1.37
4	C	1296	T9N	C21-C22	3.15	1.49	1.44
4	A	1299	T9N	C21-C22	3.06	1.49	1.44
4	C	1296	T9N	C12-N11	2.03	1.45	1.40

All (28) bond angle outliers are listed below:

Mol	Chain	Res	Type	Atoms	Z	Observed(°)	Ideal(°)
4	C	1296	T9N	N19-C10-N09	-17.41	111.70	126.68
4	A	1299	T9N	N19-C10-N09	-16.82	112.21	126.68
4	A	1299	T9N	C01-N02-C03	-14.61	110.06	122.85
4	C	1296	T9N	C01-N02-C03	-14.35	110.28	122.85
4	A	1299	T9N	C05-C07-S24	-10.44	102.29	110.12
4	C	1296	T9N	C05-C07-S24	-8.92	103.43	110.12
4	C	1296	T9N	C08-N09-C10	8.72	128.95	116.18
4	A	1299	T9N	C08-N09-C10	8.23	128.22	116.18
4	C	1296	T9N	S24-C03-N04	-7.52	106.17	120.99
4	A	1299	T9N	S24-C03-N04	-7.28	106.64	120.99
4	C	1296	T9N	S24-C03-N02	4.92	124.94	121.80
4	C	1296	T9N	C20-N19-C10	4.57	124.89	116.02
4	A	1299	T9N	C20-N19-C10	4.54	124.84	116.02

*Continued on next page...*

*Continued from previous page...*

Mol	Chain	Res	Type	Atoms	Z	Observed(°)	Ideal(°)
4	C	1296	T9N	C06-C05-C07	-4.52	124.33	129.68
4	A	1299	T9N	S24-C03-N02	4.21	124.49	121.80
4	C	1296	T9N	C20-C21-C08	-3.29	112.68	118.22
4	A	1299	T9N	C06-C05-C07	-3.14	125.96	129.68
4	C	1296	T9N	C21-C08-N09	-3.12	117.86	121.30
4	A	1299	T9N	C07-C08-N09	3.01	119.77	115.50
4	A	1299	T9N	C21-C08-N09	-2.98	118.02	121.30
4	A	1299	T9N	C20-C21-C22	2.92	123.75	119.44
4	C	1296	T9N	C12-N11-C10	-2.85	120.68	128.77
4	A	1299	T9N	C20-C21-C08	-2.85	113.42	118.22
4	C	1296	T9N	N11-C10-N19	2.54	124.37	116.41
4	A	1299	T9N	N11-C10-N09	2.45	124.19	116.97
4	C	1296	T9N	N11-C10-N09	2.34	123.88	116.97
4	A	1299	T9N	N11-C10-N19	2.28	123.56	116.41
4	A	1299	T9N	C12-N11-C10	-2.23	122.46	128.77

There are no chirality outliers.

There are no torsion outliers.

There are no ring outliers.

## 5.7 Other polymers ⓘ

There are no such residues in this entry.

## 5.8 Polymer linkage issues

There are no chain breaks in this entry.

## 6 Fit of model and data ⓘ

### 6.1 Protein, DNA and RNA chains ⓘ

In the following table, the column labelled ‘#RSRZ> 2’ contains the number (and percentage) of RSRZ outliers, followed by percent RSRZ outliers for the chain as percentile scores relative to all X-ray entries and entries of similar resolution. The OWAB column contains the minimum, median, 95<sup>th</sup> percentile and maximum values of the occupancy-weighted average B-factor per residue. The column labelled ‘Q< 0.9’ lists the number of (and percentage) of residues with an average occupancy less than 0.9.

Mol	Chain	Analysed	<RSRZ>	#RSRZ>2	OWAB(Å <sup>2</sup> )	Q<0.9
1	A	297/300 (99%)	0.08	10 (3%) 43 47	14, 24, 71, 92	0
1	C	296/300 (98%)	0.51	23 (7%) 13 14	26, 50, 82, 109	0
2	B	257/262 (98%)	-0.10	2 (0%) 83 87	16, 28, 52, 81	0
3	D	255/262 (97%)	0.53	24 (9%) 9 9	23, 45, 83, 112	0
All	All	1105/1124 (98%)	0.26	59 (5%) 25 28	14, 36, 78, 112	0

All (59) RSRZ outliers are listed below:

Mol	Chain	Res	Type	RSRZ
1	A	15	TYR	5.7
3	D	367	VAL	5.4
1	A	96	LEU	5.4
1	C	15	TYR	5.2
3	D	323	GLN	5.1
3	D	423	LEU	4.9
1	C	255	LEU	4.4
1	A	14	THR	4.0
3	D	324	PRO	3.9
1	C	287	GLN	3.9
1	C	251	VAL	3.8
1	A	295	HIS	3.8
1	C	256	ASP	3.7
1	C	14	THR	3.6
1	A	297	ARG	3.6
3	D	430	LEU	3.4
3	D	178	TYR	3.3
3	D	424	LEU	3.3
1	C	293	VAL	3.2
3	D	329	VAL	3.1
3	D	177	ASP	3.0

*Continued on next page...*

*Continued from previous page...*

Mol	Chain	Res	Type	RSRZ
3	D	327	CYS	3.0
1	C	225	VAL	2.9
1	C	13	GLY	2.9
2	B	284	ASP	2.9
2	B	283	ASP	2.8
1	C	219	LEU	2.8
1	C	243	TRP	2.8
1	C	289	VAL	2.7
3	D	418	TYR	2.7
1	A	36	ARG	2.7
3	D	415	ASN	2.6
3	D	360	PHE	2.6
1	C	282	ALA	2.6
3	D	328	LYS	2.5
3	D	365	TYR	2.5
1	C	286	PHE	2.5
3	D	372	TRP	2.5
1	C	234	PRO	2.5
1	C	231	THR	2.4
3	D	395	HIS	2.4
1	C	248	PHE	2.4
1	C	236	TYR	2.3
3	D	428	GLU	2.3
1	C	101	LEU	2.3
3	D	419	HIS	2.2
3	D	319	PHE	2.2
1	A	72	THR	2.2
3	D	421	VAL	2.1
3	D	280	TYR	2.1
3	D	427	PRO	2.1
1	A	71	HIS	2.1
1	C	285	PHE	2.1
1	C	241	PRO	2.1
1	C	157	ARG	2.1
3	D	410[A]	ARG	2.1
1	A	0	SER	2.0
1	C	240	PHE	2.0
1	A	19	TYR	2.0



## 6.2 Non-standard residues in protein, DNA, RNA chains ⓘ

In the following table, the Atoms column lists the number of modelled atoms in the group and the number defined in the chemical component dictionary. LLDF column lists the quality of electron density of the group with respect to its neighbouring residues in protein, DNA or RNA chains. The B-factors column lists the minimum, median, 95<sup>th</sup> percentile and maximum values of B factors of atoms in the group. The column labelled 'Q< 0.9' lists the number of atoms with occupancy less than 0.9.

Mol	Type	Chain	Res	Atoms	RSR	LLDF	B-factors(Å <sup>2</sup> )	Q<0.9
1	TPO	C	160	11/12	0.14	-0.15	34,41,47,50	0
1	TPO	A	160	11/12	0.10	-0.69	18,22,24,26	0

## 6.3 Carbohydrates ⓘ

There are no carbohydrates in this entry.

## 6.4 Ligands ⓘ

In the following table, the Atoms column lists the number of modelled atoms in the group and the number defined in the chemical component dictionary. LLDF column lists the quality of electron density of the group with respect to its neighbouring residues in protein, DNA or RNA chains. The B-factors column lists the minimum, median, 95<sup>th</sup> percentile and maximum values of B factors of atoms in the group. The column labelled 'Q< 0.9' lists the number of atoms with occupancy less than 0.9.

Mol	Type	Chain	Res	Atoms	RSR	LLDF	B-factors(Å <sup>2</sup> )	Q<0.9
5	SO4	B	1433	5/5	0.17	1.66	68,72,76,81	0
5	SO4	D	1432	5/5	0.19	1.25	84,86,87,87	0
4	T9N	A	1299	24/24	0.14	1.07	20,31,60,62	0
4	T9N	C	1296	24/24	0.13	0.29	29,38,73,73	0

## 6.5 Other polymers ⓘ

There are no such residues in this entry.