



wwPDB X-ray Structure Validation Summary Report

Sep 19, 2014 – 04:45 AM EDT

PDB ID : 4BE9
Title : Open conformation of O. piceae sterol esterase
Authors : Gutierrez-Fernandez, J.; Vaquero, M.E.; Prieto, A.; Barriuso, J.; Gonzalez, M.J.; Hermoso, J.A.
Deposited on : 2013-03-06
Resolution : 2.00 Å(reported)

This is a wwPDB validation summary report for a publicly released PDB entry.
We welcome your comments at validation@mail.wwpdb.org
A user guide is available at <http://wwpdb.org/ValidationPDFNotes.html>

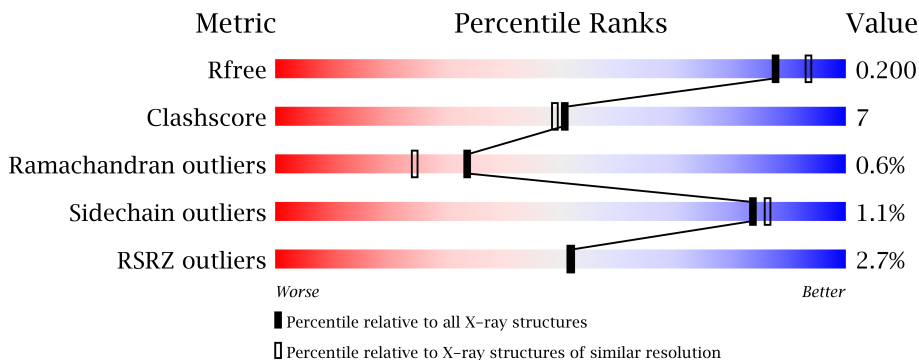
The following versions of software and data (see [references](#)) were used in the production of this report:

MolProbity : 4.02b-467
Mogul : 1.16 November 2013
Xtriage (Phenix) : dev-1439
EDS : stable23489
Percentile statistics : 21963
Refmac : 5.8.0049
CCP4 : 6.3.0 (Settle)
Ideal geometry (proteins) : Engh & Huber (2001)
Ideal geometry (DNA, RNA) : Parkinson et. al. (1996)
Validation Pipeline (wwPDB-VP) : stable23489

1 Overall quality at a glance

The reported resolution of this entry is 2.00 Å.

Percentile scores (ranging between 0-100) for global validation metrics of the entry are shown in the following graphic. The table shows the number of entries on which the scores are based.



Metric	Whole archive (#Entries)	Similar resolution (#Entries, resolution range(Å))
R_{free}	66092	4888 (2.00-2.00)
Clashscore	79885	6188 (2.00-2.00)
Ramachandran outliers	78287	6102 (2.00-2.00)
Sidechain outliers	78261	6100 (2.00-2.00)
RSRZ outliers	66119	4890 (2.00-2.00)

The table below summarises the geometric issues observed across the polymeric chains and their fit to the electron density. The red, orange, yellow and green segments on the lower bar indicate the fraction of residues that contain outliers for ≥ 3 , 2, 1 and 0 types of geometric quality criteria. The upper red bar (where present) indicates the fraction of residues that have poor fit to the electron density.

Mol	Chain	Length	Quality of chain
1	A	545	
1	B	545	

The following table lists non-polymeric compounds that are outliers for geometric or electron-density-fit criteria:

Mol	Type	Chain	Res	Geometry	Electron density
3	7P9	A	1552	-	X
4	1PE	A	1553	-	X
5	PGE	A	1554	-	X
5	PGE	A	1558	-	X
5	PGE	B	1556	-	X
6	PEG	A	1555	-	X

Continued on next page...

Continued from previous page...

Mol	Type	Chain	Res	Geometry	Electron density
6	PEG	A	1559	-	X
6	PEG	B	1552	-	X
6	PEG	B	1553	-	X
6	PEG	B	1554	-	X
6	PEG	B	1555	-	X
7	GOL	A	1556	-	X
7	GOL	B	1557	-	X
7	GOL	B	1558	-	X
8	NO3	A	1557	X	X
8	NO3	B	1559	X	-

2 Entry composition

There are 9 unique types of molecules in this entry. The entry contains 9295 atoms, of which 0 are hydrogen and 0 are deuterium.

In the tables below, the ZeroOcc column contains the number of atoms modelled with zero occupancy, the AltConf column contains the number of residues with at least one atom in alternate conformation and the Trace column contains the number of residues modelled with at most 2 atoms.

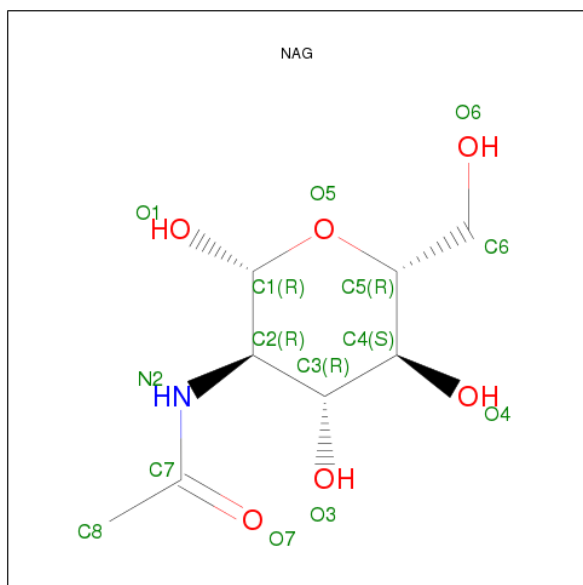
- Molecule 1 is a protein called STEROL ESTERASE.

Mol	Chain	Residues	Atoms					ZeroOcc	AltConf	Trace
1	A	538	Total	C	N	O	S	0	6	0
			4178	2701	670	797	10			
1	B	537	Total	C	N	O	S	0	3	0
			4140	2672	666	792	10			

There are 16 discrepancies between the modelled and reference sequences:

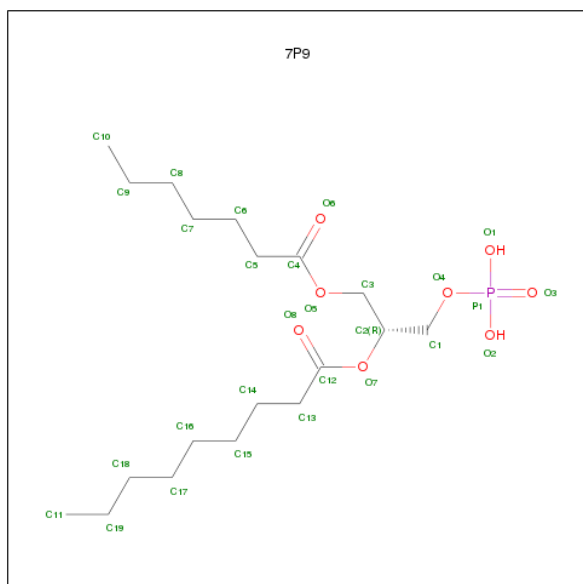
Chain	Residue	Modelled	Actual	Comment	Reference
A	5	GLU	-	EXPRESSION TAG	UNP Q2TFW1
A	6	ALA	-	EXPRESSION TAG	UNP Q2TFW1
A	7	GLU	-	EXPRESSION TAG	UNP Q2TFW1
A	8	ALA	-	EXPRESSION TAG	UNP Q2TFW1
A	9	TYR	-	EXPRESSION TAG	UNP Q2TFW1
A	10	VAL	-	EXPRESSION TAG	UNP Q2TFW1
A	11	GLU	-	EXPRESSION TAG	UNP Q2TFW1
A	12	PHE	-	EXPRESSION TAG	UNP Q2TFW1
B	5	GLU	-	EXPRESSION TAG	UNP Q2TFW1
B	6	ALA	-	EXPRESSION TAG	UNP Q2TFW1
B	7	GLU	-	EXPRESSION TAG	UNP Q2TFW1
B	8	ALA	-	EXPRESSION TAG	UNP Q2TFW1
B	9	TYR	-	EXPRESSION TAG	UNP Q2TFW1
B	10	VAL	-	EXPRESSION TAG	UNP Q2TFW1
B	11	GLU	-	EXPRESSION TAG	UNP Q2TFW1
B	12	PHE	-	EXPRESSION TAG	UNP Q2TFW1

- Molecule 2 is SUGAR (N-ACETYL-D-GLUCOSAMINE) (three-letter code: NAG) (formula: C₈H₁₅NO₆).



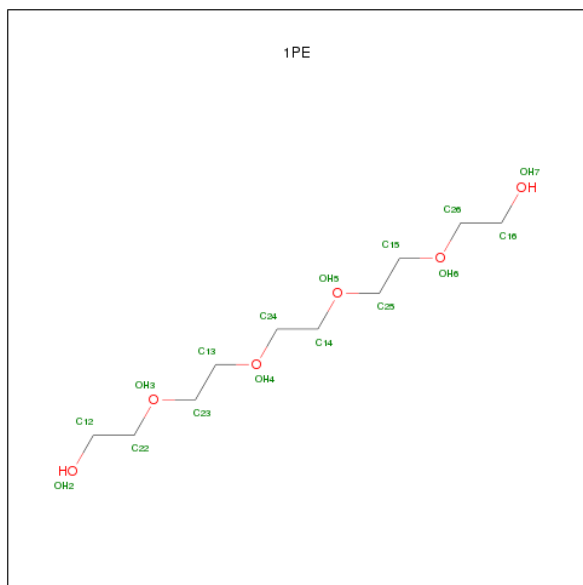
Mol	Chain	Residues	Atoms				ZeroOcc	AltConf
2	A	1	Total	C	N	O	0	0
			14	8	1	5		
2	A	1	Total	C	N	O	0	0
			14	8	1	5		
2	B	1	Total	C	N	O	0	0
			14	8	1	5		

- Molecule 3 is [(2R)-2-HEPTANOYLOXY-3-PHOSPHONOOXY-PROPYL]NONANOATE (three-letter code: 7P9) (formula: C₁₉H₃₇O₈P).



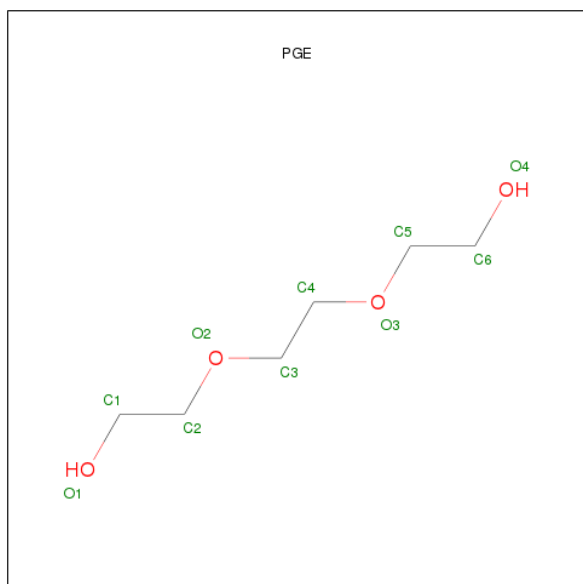
Mol	Chain	Residues	Atoms				ZeroOcc	AltConf
3	A	1	Total	C	O	P	0	0
			28	19	8	1		
3	B	1	Total	C	O	P	0	0
			28	19	8	1		

- Molecule 4 is PENTAETHYLENE GLYCOL (three-letter code: 1PE) (formula: $C_{10}H_{22}O_6$).



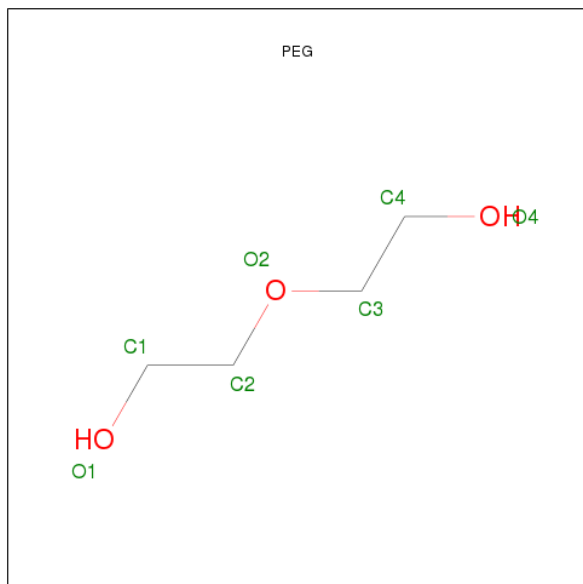
Mol	Chain	Residues	Atoms			ZeroOcc	AltConf
4	A	1	Total	C	O	0	0
			16	10	6		

- Molecule 5 is TRIETHYLENE GLYCOL (three-letter code: PGE) (formula: $C_6H_{14}O_4$).



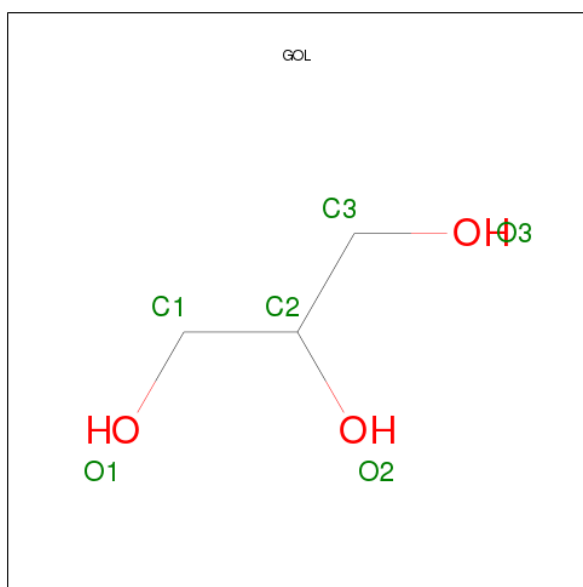
Mol	Chain	Residues	Atoms			ZeroOcc	AltConf
5	A	1	Total	C	O	0	0
			10	6	4		
5	A	1	Total	C	O	0	0
			10	6	4		
5	B	1	Total	C	O	0	0
			10	6	4		

- Molecule 6 is DI(HYDROXYETHYL)ETHER (three-letter code: PEG) (formula: $C_4H_{10}O_3$).



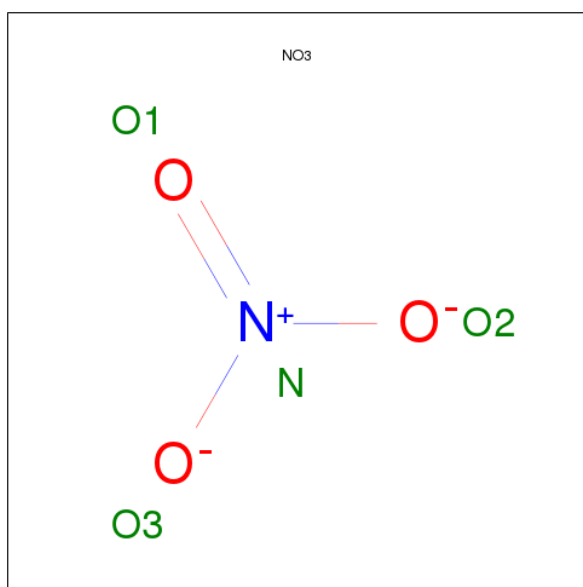
Mol	Chain	Residues	Atoms			ZeroOcc	AltConf
6	A	1	Total	C	O	0	0
			7	4	3		
6	A	1	Total	C	O	0	0
			7	4	3		
6	B	1	Total	C	O	0	0
			7	4	3		
6	B	1	Total	C	O	0	0
			7	4	3		
6	B	1	Total	C	O	0	0
			7	4	3		
6	B	1	Total	C	O	0	0
			7	4	3		

- Molecule 7 is GLYCEROL (three-letter code: GOL) (formula: $C_3H_8O_3$).



Mol	Chain	Residues	Atoms			ZeroOcc	AltConf
7	A	1	Total	C	O	0	0
			6	3	3		
7	B	1	Total	C	O	0	0
			6	3	3		
7	B	1	Total	C	O	0	0
			6	3	3		

- Molecule 8 is NITRATE ION (three-letter code: NO3) (formula: NO₃).



Mol	Chain	Residues	Atoms			ZeroOcc	AltConf
8	A	1	Total	N	O	0	0
			4	1	3		

Continued on next page...

Continued from previous page...

Mol	Chain	Residues	Atoms			ZeroOcc	AltConf
8	B	1	Total	N	O	0	0
			4	1	3		

- Molecule 9 is water.

Mol	Chain	Residues	Atoms		ZeroOcc	AltConf
9	A	528	Total	O	0	0
			528	528		
9	B	237	Total	O	0	0
			237	237		

3 Residue-property plots

These plots are drawn for all protein, RNA and DNA chains in the entry. The first graphic for a chain summarises the proportions of errors displayed in the second graphic. The second graphic shows the sequence view annotated by issues in geometry and electron density. Residues are color-coded according to the number of geometric quality criteria for which they contain at least one outlier: green = 0, yellow = 1, orange = 2 and red = 3 or more. A red dot above a residue indicates a poor fit to the electron density ($RSRZ > 2$). Stretches of 2 or more consecutive residues without any outlier are shown as a green connector. Residues present in the sample, but not in the model, are shown in grey.

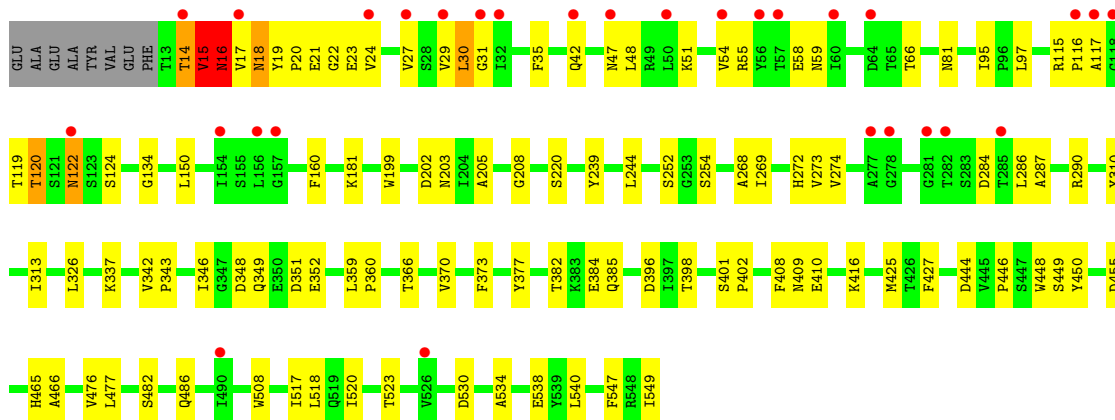
• Molecule 1: STEROL ESTERASE

Chain A: 



• Molecule 1: STEROL ESTERASE

Chain B: 



4 Data and refinement statistics

Property	Value	Source
Space group	I 41	Depositor
Cell constants a, b, c, α , β , γ	164.12Å 164.12Å 93.99Å 90.00° 90.00° 90.00°	Depositor
Resolution (Å)	43.56 – 2.00 47.00 – 2.00	Depositor EDS
% Data completeness (in resolution range)	100.0 (43.56-2.00) 100.0 (47.00-2.00)	Depositor EDS
R_{merge}	0.11	Depositor
R_{sym}	(Not available)	Depositor
$\langle I/\sigma(I) \rangle$ ¹	2.20 (at 2.00Å)	Xtriage
Refinement program	PHENIX (PHENIX.REFINE)	Depositor
R, R_{free}	0.168 , 0.206 0.163 , 0.200	Depositor DCC
R_{free} test set	4200 reflections (4.99%)	DCC
Wilson B-factor (Å ²)	28.5	Xtriage
Anisotropy	0.073	Xtriage
Bulk solvent k_{sol} (e/Å ³), B_{sol} (Å ²)	0.35 , 46.6	EDS
Estimated twinning fraction	0.023 for -k,-h,-l	Xtriage
L-test for twinning	$\langle L \rangle = 0.48$, $\langle L^2 \rangle = 0.32$	Xtriage
Outliers	0 of 84190 reflections	Xtriage
F_o, F_c correlation	0.96	EDS
Total number of atoms	9295	wwPDB-VP
Average B, all atoms (Å ²)	35.0	wwPDB-VP

Xtriage's analysis on translational NCS is as follows: *The largest off-origin peak in the Patterson function is 2.82% of the height of the origin peak. No significant pseudotranslation is detected.*

¹Intensities estimated from amplitudes.

5 Model quality

5.1 Standard geometry

Bond lengths and bond angles in the following residue types are not validated in this section: GOL, PGE, NAG, NO3, 1PE, PEG, 7P9

The Z score for a bond length (or angle) is the number of standard deviations the observed value is removed from the expected value. A bond length (or angle) with $|Z| > 5$ is considered an outlier worth inspection. RMSZ is the root-mean-square of all Z scores of the bond lengths (or angles).

Mol	Chain	Bond lengths		Bond angles	
		RMSZ	$\# Z > 5$	RMSZ	$\# Z > 5$
1	A	0.43	0/4283	0.55	0/5841
1	B	0.34	0/4243	0.48	0/5786
All	All	0.39	0/8526	0.52	0/11627

Chiral center outliers are detected by calculating the chiral volume of a chiral center and verifying if the center is modelled as a planar moiety or with the opposite hand. A planarity outlier is detected by checking planarity of atoms in a peptide group, atoms in a mainchain group or atoms of a sidechain that are expected to be planar.

Mol	Chain	#Chirality outliers	#Planarity outliers
1	B	0	2

There are no bond length outliers.

There are no bond angle outliers.

There are no chirality outliers.

All (2) planarity outliers are listed below:

Mol	Chain	Res	Type	Group
1	B	15	VAL	Peptide
1	B	16[B]	ASN	Peptide

5.2 Close contacts

In the following table, the Non-H and H(model) columns list the number of non-hydrogen atoms and hydrogen atoms in the chain respectively. The H(added) column lists the number of hydrogens added by MolProbity. The Clashes column lists the number of clashes within the asymmetric unit, and the number in parentheses is this value normalized per 1000 atoms of the molecule in the chain. The Symm-Clashes column gives symmetry related clashes, in the same way as for the Clashes column.

Mol	Chain	Non-H	H(model)	H(added)	Clashes	Symm-Clashes
1	A	4178	0	4089	29	0
1	B	4140	0	4056	89	0
2	A	28	0	26	1	0
2	B	14	0	13	1	0
3	A	28	0	37	5	0
3	B	28	0	37	3	0
4	A	16	0	22	5	0
5	A	20	0	28	0	0
5	B	10	0	14	0	0
6	A	14	0	20	0	0
6	B	28	0	40	0	0
7	A	6	0	8	2	0
7	B	12	0	16	0	0
8	A	4	0	0	1	0
8	B	4	0	0	1	0
9	A	528	0	0	12	0
9	B	237	0	0	10	0
All	All	9295	0	8406	125	0

Clashscore is defined as the number of clashes calculated for the entry per 1000 atoms (including hydrogens) of the entry. The overall clashscore for this entry is 7.

The worst 5 of 125 close contacts within the same asymmetric unit are listed below.

Atom-1	Atom-2	Distance(Å)	Clash(Å)
1:B:15:VAL:HG22	1:B:16[B]:ASN:HB2	1.20	1.11
1:B:534:ALA:O	1:B:538:GLU:HG2	1.68	0.92
1:B:120:THR:HG23	1:B:122:ASN:H	1.35	0.91
1:B:30:LEU:HD12	1:B:30:LEU:H	1.33	0.91
1:B:55:ARG:NH2	9:B:2004:HOH:O	2.02	0.90

There are no symmetry-related clashes.

5.3 Torsion angles

5.3.1 Protein backbone ⓘ

In the following table, the Percentiles column shows the percent Ramachandran outliers of the chain as a percentile score with respect to all X-ray entries followed by that with respect to entries of similar resolution.

The Analysed column shows the number of residues for which the backbone conformation was analysed, and the total number of residues.

Mol	Chain	Analysed	Favoured	Allowed	Outliers	Percentiles	
1	A	542/545 (99%)	525 (97%)	16 (3%)	1 (0%)	56	51
1	B	538/545 (99%)	503 (94%)	29 (5%)	6 (1%)	21	10
All	All	1080/1090 (99%)	1028 (95%)	45 (4%)	7 (1%)	33	24

5 of 7 Ramachandran outliers are listed below:

Mol	Chain	Res	Type
1	B	16[A]	ASN
1	B	16[B]	ASN
1	B	30	LEU
1	A	254	SER
1	B	254	SER

5.3.2 Protein sidechains ⓘ

In the following table, the Percentiles column shows the percent sidechain outliers of the chain as a percentile score with respect to all X-ray entries followed by that with respect to entries of similar resolution. The Analysed column shows the number of residues for which the sidechain conformation was analysed, and the total number of residues.

Mol	Chain	Analysed	Rotameric	Outliers	Percentiles	
1	A	449/448 (100%)	449 (100%)	0	100	100
1	B	445/448 (99%)	434 (98%)	11 (2%)	60	59
All	All	894/896 (100%)	883 (99%)	11 (1%)	84	84

5 of 11 residues with a non-rotameric sidechain are listed below:

Mol	Chain	Res	Type
1	B	58	GLU
1	B	120	THR
1	B	274	VAL
1	B	18	ASN
1	B	124	SER

Some sidechains can be flipped to improve hydrogen bonding and reduce clashes. All (1) such sidechains are listed below:

Mol	Chain	Res	Type
1	B	18	ASN

5.3.3 RNA ⓘ

There are no RNA chains in this entry.

5.4 Non-standard residues in protein, DNA, RNA chains ⓘ

There are no non-standard protein/DNA/RNA residues in this entry.

5.5 Carbohydrates ⓘ

There are no carbohydrates in this entry.

5.6 Ligand geometry ⓘ

20 ligands are modelled in this entry.

In the following table, the Counts columns list the number of bonds (or angles) for which Mogul statistics could be retrieved, the number of bonds (or angles) that are observed in the model and the number of bonds (or angles) that are defined in the chemical component dictionary. The Link column lists molecule types, if any, to which the group is linked. The Z score for a bond length (or angle) is the number of standard deviations the observed value is removed from the expected value. A bond length (or angle) with $|Z| > 2$ is considered an outlier worth inspection. RMSZ is the root-mean-square of all Z scores of the bond lengths (or angles).

Mol	Type	Chain	Res	Link	Bond lengths			Bond angles		
					Counts	RMSZ	$\# Z > 2$	Counts	RMSZ	$\# Z > 2$
2	NAG	A	1550	1	12,14,15	0.73	1 (8%)	15,19,21	1.14	2 (13%)
2	NAG	A	1551	1	12,14,15	0.91	1 (8%)	15,19,21	1.36	2 (13%)
3	7P9	A	1552	-	27,27,27	1.79	4 (14%)	32,32,32	1.98	10 (31%)
4	1PE	A	1553	-	15,15,15	0.71	0	14,14,14	1.55	1 (7%)
5	PGE	A	1554	-	9,9,9	0.88	1 (11%)	8,8,8	1.45	0
6	PEG	A	1555	-	6,6,6	0.66	0	5,5,5	1.58	0
7	GOL	A	1556	-	5,5,5	0.33	0	5,5,5	0.12	0
8	NO3	A	1557	-	3,3,3	3.24	3 (100%)	3,3,3	0.25	0
5	PGE	A	1558	-	9,9,9	0.88	1 (11%)	8,8,8	1.48	0
6	PEG	A	1559	-	6,6,6	0.70	0	5,5,5	1.47	0
2	NAG	B	1550	1	12,14,15	0.70	1 (8%)	15,19,21	1.18	1 (6%)
3	7P9	B	1551	-	27,27,27	1.82	4 (14%)	32,32,32	1.97	6 (18%)
6	PEG	B	1552	-	6,6,6	0.73	0	5,5,5	1.35	0
6	PEG	B	1553	-	6,6,6	0.74	0	5,5,5	1.42	0
6	PEG	B	1554	-	6,6,6	0.77	0	5,5,5	1.27	0

Mol	Type	Chain	Res	Link	Bond lengths			Bond angles		
					Counts	RMSZ	# Z > 2	Counts	RMSZ	# Z > 2
6	PEG	B	1555	-	6,6,6	0.72	0	5,5,5	1.39	0
5	PGE	B	1556	-	9,9,9	0.86	0	8,8,8	1.56	0
7	GOL	B	1557	-	5,5,5	0.35	0	5,5,5	0.12	0
7	GOL	B	1558	-	5,5,5	0.25	0	5,5,5	0.64	0
8	NO3	B	1559	-	3,3,3	3.25	3 (100%)	3,3,3	0.13	0

In the following table, the Chirals column lists the number of chiral outliers, the number of chiral centers analysed, the number of these observed in the model and the number defined in the chemical component dictionary. Similar counts are reported in the Torsion and Rings columns. '-' means no outliers of that kind were identified.

Mol	Type	Chain	Res	Link	Chirals	Torsions	Rings
2	NAG	A	1550	1	-	0/6/23/26	0/1/1/1
2	NAG	A	1551	1	-	0/6/23/26	0/1/1/1
3	7P9	A	1552	-	-	0/29/29/29	0/0/0/0
4	1PE	A	1553	-	-	0/13/13/13	0/0/0/0
5	PGE	A	1554	-	-	0/7/7/7	0/0/0/0
6	PEG	A	1555	-	-	0/4/4/4	0/0/0/0
7	GOL	A	1556	-	-	0/4/4/4	0/0/0/0
8	NO3	A	1557	-	-	0/0/0/0	0/0/0/0
5	PGE	A	1558	-	-	0/7/7/7	0/0/0/0
6	PEG	A	1559	-	-	0/4/4/4	0/0/0/0
2	NAG	B	1550	1	-	0/6/23/26	0/1/1/1
3	7P9	B	1551	-	-	0/29/29/29	0/0/0/0
6	PEG	B	1552	-	-	0/4/4/4	0/0/0/0
6	PEG	B	1553	-	-	0/4/4/4	0/0/0/0
6	PEG	B	1554	-	-	0/4/4/4	0/0/0/0
6	PEG	B	1555	-	-	0/4/4/4	0/0/0/0
5	PGE	B	1556	-	-	0/7/7/7	0/0/0/0
7	GOL	B	1557	-	-	0/4/4/4	0/0/0/0
7	GOL	B	1558	-	-	0/4/4/4	0/0/0/0
8	NO3	B	1559	-	-	0/0/0/0	0/0/0/0

The worst 5 of 19 bond length outliers are listed below:

Mol	Chain	Res	Type	Atoms	Z	Observed(Å)	Ideal(Å)
3	B	1551	7P9	O6-C4	5.15	1.38	1.22
3	B	1551	7P9	O8-C12	5.15	1.38	1.22
3	A	1552	7P9	O6-C4	5.08	1.37	1.22
3	A	1552	7P9	O8-C12	5.06	1.37	1.22
3	B	1551	7P9	O7-C2	-3.92	1.36	1.46

The worst 5 of 22 bond angle outliers are listed below:

Mol	Chain	Res	Type	Atoms	Z	Observed(°)	Ideal(°)
3	B	1551	7P9	O7-C12-O8	-5.56	108.83	123.66
3	B	1551	7P9	O5-C4-O6	-5.15	110.02	123.48
3	A	1552	7P9	O5-C4-O6	-4.81	110.91	123.48
3	B	1551	7P9	O5-C3-C2	4.33	120.19	108.80
3	A	1552	7P9	O8-C12-C13	-4.29	106.39	123.78

There are no chirality outliers.

There are no torsion outliers.

There are no ring outliers.

5.7 Other polymers ⓘ

There are no such residues in this entry.

5.8 Polymer linkage issues

There are no chain breaks in this entry.

6 Fit of model and data ⓘ

6.1 Protein, DNA and RNA chains ⓘ

In the following table, the column labelled ‘#RSRZ> 2’ contains the number (and percentage) of RSRZ outliers, followed by percent RSRZ outliers for the chain as percentile scores relative to all X-ray entries and entries of similar resolution. The OWAB column contains the minimum, median, 95th percentile and maximum values of the occupancy-weighted average B-factor per residue. The column labelled ‘Q< 0.9’ lists the number of (and percentage) of residues with an average occupancy less than 0.9.

Mol	Chain	Analysed	<RSRZ>	#RSRZ>2	OWAB(Å ²)	Q<0.9
1	A	538/545 (98%)	-0.55	0 100 100	13, 22, 35, 54	0
1	B	537/545 (98%)	0.14	29 (5%) 25 24	24, 43, 67, 91	0
All	All	1075/1090 (98%)	-0.21	29 (2%) 52 52	13, 32, 62, 91	0

The worst 5 of 29 RSRZ outliers are listed below:

Mol	Chain	Res	Type	RSRZ
1	B	29	VAL	5.5
1	B	154	ILE	4.4
1	B	31	GLY	3.3
1	B	24	VAL	3.3
1	B	122	ASN	3.2

6.2 Non-standard residues in protein, DNA, RNA chains ⓘ

There are no non-standard protein/DNA/RNA residues in this entry.

6.3 Carbohydrates ⓘ

There are no carbohydrates in this entry.

6.4 Ligands ⓘ

In the following table, the Atoms column lists the number of modelled atoms in the group and the number defined in the chemical component dictionary. LLDF column lists the quality of electron density of the group with respect to its neighbouring residues in protein, DNA or RNA chains. The B-factors column lists the minimum, median, 95th percentile and maximum values of B factors of atoms in the group. The column labelled ‘Q< 0.9’ lists the number of atoms with occupancy less than 0.9.

Mol	Type	Chain	Res	Atoms	RSR	LLDF	B-factors(\AA^2)	Q<0.9
6	PEG	B	1555	7/7	0.43	18.36	87,88,91,91	0
7	GOL	B	1558	6/6	0.12	12.29	41,49,52,53	0
6	PEG	B	1553	7/7	0.44	11.36	88,89,91,93	0
5	PGE	B	1556	10/10	0.38	9.67	66,71,73,74	0
6	PEG	A	1559	7/7	0.33	9.10	70,77,85,87	0
6	PEG	B	1552	7/7	0.27	8.84	60,64,72,75	0
8	NO3	A	1557	4/4	0.15	8.76	42,54,58,62	0
6	PEG	B	1554	7/7	0.18	7.85	74,75,83,84	0
6	PEG	A	1555	7/7	0.34	6.88	67,71,75,76	0
5	PGE	A	1554	10/10	0.28	5.81	69,72,76,77	0
7	GOL	A	1556	6/6	0.14	5.81	27,49,51,62	0
4	1PE	A	1553	16/16	0.24	4.62	47,64,81,82	0
5	PGE	A	1558	10/10	0.27	4.45	62,70,79,80	0
7	GOL	B	1557	6/6	0.18	2.85	59,63,65,65	0
3	7P9	A	1552	28/28	0.14	2.62	23,51,59,66	0
2	NAG	B	1550	14/15	0.17	1.54	57,67,75,75	0
2	NAG	A	1550	14/15	0.11	1.14	39,44,53,59	0
8	NO3	B	1559	4/4	0.13	0.99	80,83,84,84	0
3	7P9	B	1551	28/28	0.14	0.98	55,61,85,91	0
2	NAG	A	1551	14/15	0.08	-0.19	29,36,51,56	0

6.5 Other polymers ⓘ

There are no such residues in this entry.