



# Full wwPDB X-ray Structure Validation Report ⓘ

Feb 27, 2014 – 11:34 PM GMT

PDB ID : 2BP1  
Title : STRUCTURE OF THE AFLATOXIN ALDEHYDE REDUCTASE IN COMPLEX WITH NADPH  
Authors : Debreczeni, J.E.; Lukacik, P.; Kavanagh, K.; Dubinina, E.; Bray, J.; Colebrook, S.; Haroniti, A.; Edwards, A.; Arrowsmith, C.; Sundstrom, M.; Von Delft, F.; Gileadi, O.; Oppermann, U.  
Deposited on : 2005-04-17  
Resolution : 2.40 Å(reported)

This is a full wwPDB validation report for a publicly released PDB entry.  
We welcome your comments at [validation@mail.wwpdb.org](mailto:validation@mail.wwpdb.org)  
A user guide is available at <http://wwpdb.org/ValidationPDFNotes.html>

---

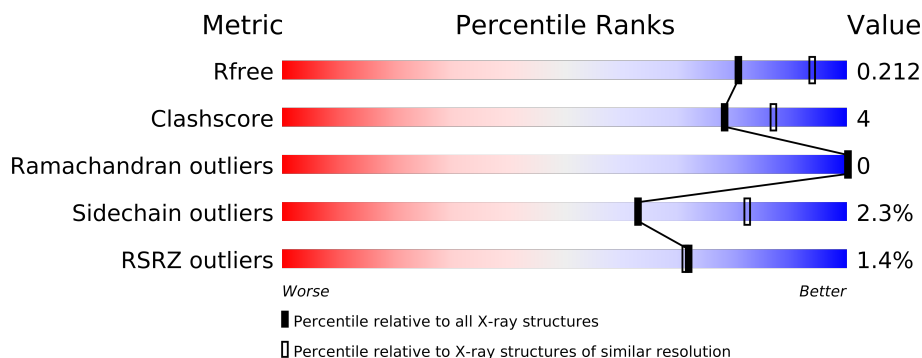
The following versions of software and data (see [references](#)) were used in the production of this report:

MolProbity : 4.02b-467  
Mogul : 1.15 2013  
Xtriage (Phenix) : dev-1323  
EDS : stable22639  
Percentile statistics : 21963  
Refmac : 5.8.0049  
CCP4 : 6.3.0 (Settle)  
Ideal geometry (proteins) : Engh & Huber (2001)  
Ideal geometry (DNA, RNA) : Parkinson et. al. (1996)  
Validation Pipeline (wwPDB-VP) : stable22683

# 1 Overall quality at a glance

The reported resolution of this entry is 2.40 Å.

Percentile scores (ranging between 0-100) for global validation metrics of the entry are shown in the following graphic. The table shows the number of entries on which the scores are based.



Metric	Whole archive (#Entries)	Similar resolution (#Entries, resolution range(Å))
$R_{free}$	66092	2207 (2.40-2.40)
Clashscore	79885	2789 (2.40-2.40)
Ramachandran outliers	78287	2736 (2.40-2.40)
Sidechain outliers	78261	2737 (2.40-2.40)
RSRZ outliers	66119	2210 (2.40-2.40)

The table below summarises the geometric issues observed across the polymeric chains and their fit to the electron density. The red, orange, yellow and green segments on the lower bar indicate the fraction of residues that contain outliers for  $\geq 3$ , 2, 1 and 0 types of geometric quality criteria. The upper red bar (where present) indicates the fraction of residues that have poor fit to the electron density.

Mol	Chain	Length	Quality of chain
1	A	360	
1	B	360	
1	C	360	
1	D	360	

The following table lists non-polymeric compounds that are outliers for geometric or electron-density-fit criteria:

Mol	Type	Chain	Res	Geometry	Electron density
3	FLC	A	1362	-	X
3	FLC	C	1362	-	X

## 2 Entry composition i

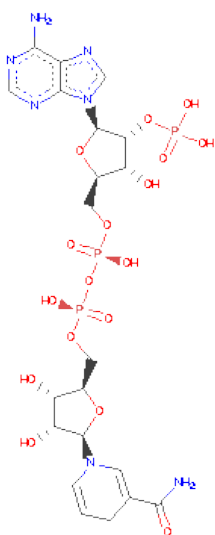
There are 4 unique types of molecules in this entry. The entry contains 10735 atoms, of which 0 are hydrogen and 0 are deuterium.

In the tables below, the ZeroOcc column contains the number of atoms modelled with zero occupancy, the AltConf column contains the number of residues with at least one atom in alternate conformation and the Trace column contains the number of residues modelled with at most 2 atoms.

- Molecule 1 is a protein called AFLATOXIN B1 ALDEHYDE REDUCTASE MEMBER 2.

Mol	Chain	Residues	Atoms					ZeroOcc	AltConf	Trace
1	A	323	Total	C	N	O	S	0	0	0
			2480	1577	430	459	14			
1	B	320	Total	C	N	O	S	0	0	0
			2498	1584	440	460	14			
1	C	320	Total	C	N	O	S	0	0	0
			2477	1574	433	456	14			
1	D	323	Total	C	N	O	S	0	0	0
			2496	1583	438	461	14			

- Molecule 2 is NADPH DIHYDRO-NICOTINAMIDE-ADENINE-DINUCLEOTIDEPHOSPHATE (three-letter code: NDP) (formula:  $C_{21}H_{30}N_7O_{17}P_3$ ).



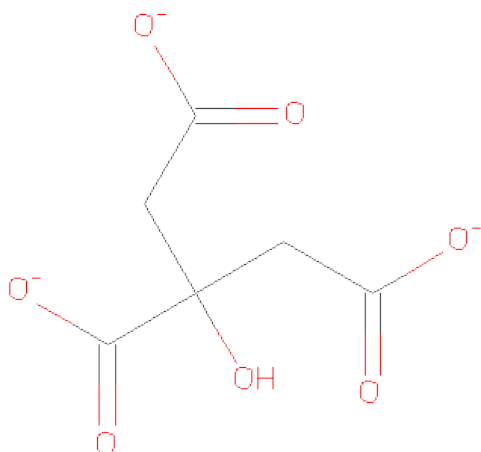
Mol	Chain	Residues	Atoms					ZeroOcc	AltConf
2	A	1	Total	C	N	O	P	0	0
			48	21	7	17	3		
2	B	1	Total	C	N	O	P	0	0
			48	21	7	17	3		

*Continued on next page...*

*Continued from previous page...*

Mol	Chain	Residues	Atoms					ZeroOcc	AltConf
2	C	1	Total	C	N	O	P	0	0
			48	21	7	17	3		
2	D	1	Total	C	N	O	P	0	0
			48	21	7	17	3		

- Molecule 3 is CITRATE ANION (three-letter code: FLC) (formula:  $C_6H_5O_7$ ).



Mol	Chain	Residues	Atoms			ZeroOcc	AltConf
3	A	1	Total	C	O	0	0
			13	6	7		
3	B	1	Total	C	O	0	0
			13	6	7		
3	C	1	Total	C	O	0	0
			13	6	7		
3	D	1	Total	C	O	0	0
			13	6	7		

- Molecule 4 is water.

Mol	Chain	Residues	Atoms		ZeroOcc	AltConf
4	A	150	Total	O	0	0
			150	150		
4	B	145	Total	O	0	0
			145	145		
4	C	144	Total	O	0	0
			144	144		

*Continued on next page...*

*Continued from previous page...*

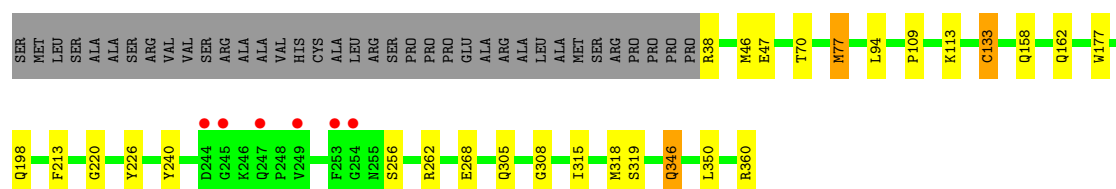
Mol	Chain	Residues	Atoms		ZeroOcc	AltConf
4	D	101	Total 101	O 101	0	0

### 3 Residue-property plots

These plots are drawn for all protein, RNA and DNA chains in the entry. The first graphic for a chain summarises the proportions of errors displayed in the second graphic. The second graphic shows the sequence view annotated by issues in geometry and electron density. Residues are color-coded according to the number of geometric quality criteria for which they contain at least one outlier: green = 0, yellow = 1, orange = 2 and red = 3 or more. A red dot above a residue indicates a poor fit to the electron density ( $RSRZ > 2$ ). Stretches of 2 or more consecutive residues without any outlier are shown as a green connector. Residues present in the sample, but not in the model, are shown in grey.

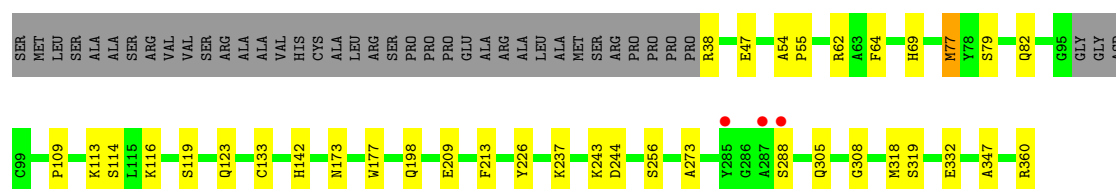
#### • Molecule 1: AFLATOXIN B1 ALDEHYDE REDUCTASE MEMBER 2

Chain A: 



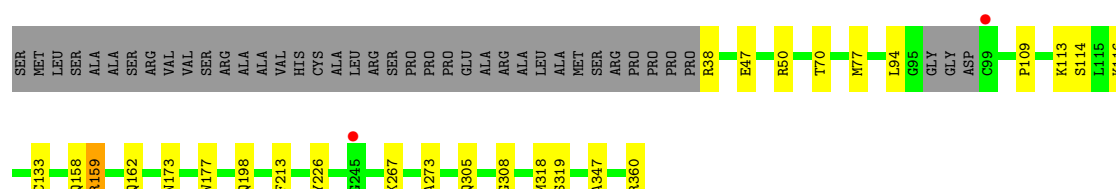
#### • Molecule 1: AFLATOXIN B1 ALDEHYDE REDUCTASE MEMBER 2

Chain B: 



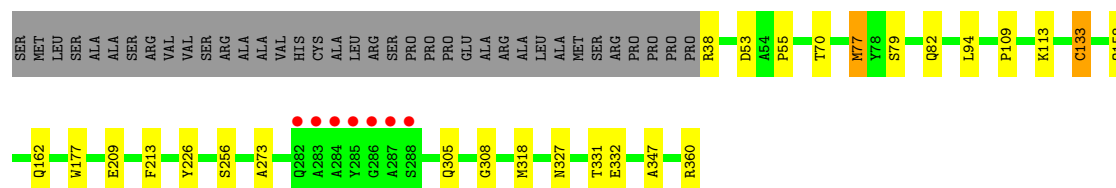
#### • Molecule 1: AFLATOXIN B1 ALDEHYDE REDUCTASE MEMBER 2

Chain C: 



#### • Molecule 1: AFLATOXIN B1 ALDEHYDE REDUCTASE MEMBER 2

Chain D: 



## 4 Data and refinement statistics

Property	Value	Source
Space group	P 1	Depositor
Cell constants a, b, c, $\alpha$ , $\beta$ , $\gamma$	58.99Å 78.79Å 86.02Å 88.72° 71.14° 75.22°	Depositor
Resolution (Å)	40.00 – 2.40 39.98 – 2.40	Depositor EDS
% Data completeness (in resolution range)	90.4 (40.00-2.40) 90.4 (39.98-2.40)	Depositor EDS
$R_{merge}$	0.08	Depositor
$R_{sym}$	(Not available)	Depositor
$\langle I/\sigma(I) \rangle$ <sup>1</sup>	1.80 (at 2.39Å)	Xtriage
Refinement program	REFMAC 5.2.0005	Depositor
R, $R_{free}$	0.155 , 0.205 0.166 , 0.212	Depositor DCC
$R_{free}$ test set	1828 reflections (3.80%)	DCC
Wilson B-factor (Å <sup>2</sup> )	26.9	Xtriage
Anisotropy	0.067	Xtriage
Bulk solvent $k_{sol}$ (e/Å <sup>3</sup> ), $B_{sol}$ (Å <sup>2</sup> )	0.39 , 32.0	EDS
Estimated twinning fraction	No twinning to report.	Xtriage
L-test for twinning	$\langle  L  \rangle = 0.50$ , $\langle L^2 \rangle = 0.33$	Xtriage
Outliers	0 of 49989 reflections	Xtriage
$F_o, F_c$ correlation	0.94	EDS
Total number of atoms	10735	wwPDB-VP
Average B, all atoms (Å <sup>2</sup> )	31.0	wwPDB-VP

Xtriage's analysis on translational NCS is as follows: *The largest off-origin peak in the Patterson function is 5.11% of the height of the origin peak. No significant pseudotranslation is detected.*

<sup>1</sup>Intensities estimated from amplitudes.

## 5 Model quality ⓘ

### 5.1 Standard geometry ⓘ

Bond lengths and bond angles in the following residue types are not validated in this section: NDP, FLC

The Z score for a bond length (or angle) is the number of standard deviations the observed value is removed from the expected value. A bond length (or angle) with  $|Z| > 5$  is considered an outlier worth inspection. RMSZ is the root-mean-square of all Z scores of the bond lengths (or angles).

Mol	Chain	Bond lengths		Bond angles	
		RMSZ	# Z  >5	RMSZ	# Z  >5
1	A	0.70	1/2546 (0.0%)	0.70	1/3459 (0.0%)
1	B	0.66	0/2563	0.67	0/3476
1	C	0.64	0/2542	0.67	1/3451 (0.0%)
1	D	0.63	0/2562	0.67	0/3479
All	All	0.66	1/10213 (0.0%)	0.68	2/13865 (0.0%)

All (1) bond length outliers are listed below:

Mol	Chain	Res	Type	Atoms	Z	Observed(Å)	Ideal(Å)
1	A	346	GLN	CG-CD	6.99	1.67	1.51

All (2) bond angle outliers are listed below:

Mol	Chain	Res	Type	Atoms	Z	Observed(°)	Ideal(°)
1	A	262	ARG	NE-CZ-NH2	6.88	123.74	120.30
1	C	159	ARG	NE-CZ-NH2	5.07	122.84	120.30

There are no chirality outliers.

There are no planarity outliers.

### 5.2 Close contacts ⓘ

In the following table, the Non-H and H(model) columns list the number of non-hydrogen atoms and hydrogen atoms in the chain respectively. The H(added) column lists the number of hydrogens added by MolProbity. The Clashes column lists the number of clashes within the asymmetric unit, and the number in parentheses is this value normalized per 1000 atoms of the molecule in the chain. The Symm-Clashes column gives symmetry related clashes, in the same way as for the Clashes column.



Mol	Chain	Non-H	H(model)	H(added)	Clashes	Symm-Clashes
1	A	2480	0	2354	17	0
1	B	2498	0	2401	21	0
1	C	2477	0	2366	16	0
1	D	2496	0	2379	15	0
2	A	48	0	26	4	0
2	B	48	0	26	3	0
2	C	48	0	26	3	0
2	D	48	0	26	3	0
3	A	13	0	5	1	0
3	B	13	0	5	4	0
3	C	13	0	5	1	0
3	D	13	0	5	3	0
4	A	150	0	0	2	0
4	B	145	0	0	2	0
4	C	144	0	0	3	0
4	D	101	0	0	1	0
All	All	10735	0	9624	71	0

Clashscore is defined as the number of clashes calculated for the entry per 1000 atoms (including hydrogens) of the entry. The overall clashscore for this entry is 4.

All (71) close contacts within the same asymmetric unit are listed below.

Atom-1	Atom-2	Distance(Å)	Clash(Å)
1:D:94:LEU:O	1:D:133:CYS:HB2	1.88	0.74
1:A:94:LEU:O	1:A:133:CYS:HB2	1.91	0.71
1:B:114:SER:OG	1:B:116:LYS:HG2	1.96	0.66
1:A:346:GLN:HG2	4:A:2133:HOH:O	1.96	0.64
1:B:213:PHE:HE2	1:B:305:GLN:HB2	1.64	0.63
1:B:213:PHE:CE2	1:B:305:GLN:HB2	2.35	0.61
1:B:243:LYS:NZ	1:B:244:ASP:OD1	2.34	0.60
1:B:109:PRO:O	1:B:113:LYS:O	2.19	0.60
1:D:38:ARG:HG3	1:D:308:GLY:HA3	1.83	0.60
1:D:109:PRO:O	1:D:113:LYS:O	2.21	0.59
1:D:226:TYR:CE1	2:D:1361:NDP:H41N	2.37	0.58
1:D:360:ARG:HD2	4:D:2097:HOH:O	2.04	0.57
1:A:38:ARG:HG3	1:A:308:GLY:HA3	1.85	0.56
1:C:226:TYR:CE1	2:C:1361:NDP:H41N	2.40	0.56
2:C:1361:NDP:H42N	3:C:1362:FLC:CGC	2.36	0.55
1:A:158:GLN:O	1:A:162:GLN:HG2	2.06	0.55
1:B:360:ARG:HD2	4:B:2055:HOH:O	2.06	0.55
1:C:267:LYS:CE	4:C:2089:HOH:O	2.54	0.54
1:A:109:PRO:O	1:A:113:LYS:O	2.26	0.54
1:A:46:MET:HE2	2:A:1361:NDP:H3D	1.91	0.53

*Continued on next page...*

*Continued from previous page...*

Atom-1	Atom-2	Distance(Å)	Clash(Å)
1:C:158:GLN:O	1:C:162:GLN:HG3	2.09	0.53
1:B:142:HIS:NE2	3:B:1362:FLC:OG1	2.42	0.53
1:D:213:PHE:HE2	1:D:305:GLN:HB2	1.75	0.52
1:A:198:GLN:OE1	2:A:1361:NDP:H2N	2.09	0.51
1:C:38:ARG:HG3	1:C:308:GLY:HA3	1.93	0.51
1:C:94:LEU:O	1:C:133:CYS:HB2	2.11	0.51
1:A:77:MET:HE1	3:A:1362:FLC:HG2	1.93	0.51
1:A:240:TYR:CZ	1:A:268:GLU:HG3	2.47	0.50
1:C:173:ASN:HB3	1:C:360:ARG:HD3	1.94	0.50
1:C:109:PRO:O	1:C:113:LYS:O	2.30	0.50
1:D:213:PHE:CE2	1:D:305:GLN:HB2	2.47	0.50
1:A:226:TYR:CE1	2:A:1361:NDP:H41N	2.48	0.49
1:A:47:GLU:HG2	1:A:319:SER:HA	1.94	0.49
1:C:267:LYS:HE2	4:C:2089:HOH:O	2.10	0.49
1:B:226:TYR:CE1	2:B:1361:NDP:H41N	2.47	0.49
1:C:47:GLU:HG2	1:C:319:SER:HA	1.95	0.48
1:B:209:GLU:HG2	1:B:305:GLN:HG3	1.95	0.48
1:B:38:ARG:HG3	1:B:308:GLY:HA3	1.95	0.47
1:A:213:PHE:HE2	1:A:305:GLN:HB2	1.78	0.47
1:C:273:ALA:HB1	1:C:347:ALA:HB1	1.97	0.47
1:C:177:TRP:HA	1:D:177:TRP:HA	1.97	0.46
2:D:1361:NDP:H42N	3:D:1362:FLC:CBC	2.46	0.46
1:C:213:PHE:CE2	1:C:305:GLN:HB2	2.50	0.46
1:B:198:GLN:OE1	2:B:1361:NDP:H2N	2.17	0.45
3:B:1362:FLC:OHB	3:B:1362:FLC:OG1	2.32	0.45
1:D:158:GLN:O	1:D:162:GLN:HG2	2.16	0.45
1:B:77:MET:CE	3:B:1362:FLC:HG2	2.46	0.45
1:B:173:ASN:HB3	1:B:360:ARG:HD3	1.98	0.44
1:A:220:GLY:O	1:C:159:ARG:NH1	2.51	0.44
1:D:77:MET:HE1	3:D:1362:FLC:HG2	1.99	0.44
2:B:1361:NDP:H42N	3:B:1362:FLC:CGC	2.48	0.44
1:D:209:GLU:HG2	1:D:305:GLN:HG3	2.00	0.43
1:A:213:PHE:CE2	1:A:305:GLN:HB2	2.53	0.43
1:D:273:ALA:HB1	1:D:347:ALA:HB1	1.99	0.43
1:B:79:SER:O	1:B:82:GLN:HB2	2.19	0.43
1:B:119:SER:O	1:B:123:GLN:HG3	2.19	0.42
2:D:1361:NDP:H42N	3:D:1362:FLC:CGC	2.49	0.42
1:D:327:ASN:O	1:D:331:THR:HG23	2.19	0.42
1:C:114:SER:OG	1:C:116:LYS:CG	2.68	0.42
1:A:360:ARG:O	4:A:2146:HOH:O	2.22	0.42
1:A:315:ILE:HG22	2:A:1361:NDP:H4D	2.02	0.42
1:D:79:SER:O	1:D:82:GLN:HB2	2.20	0.42

*Continued on next page...*

*Continued from previous page...*

Atom-1	Atom-2	Distance(Å)	Clash(Å)
1:B:273:ALA:HB1	1:B:347:ALA:HB1	2.02	0.41
1:A:177:TRP:HA	1:B:177:TRP:HA	2.02	0.41
1:B:64:PHE:CZ	1:B:69:HIS:HB3	2.56	0.41
1:B:54:ALA:HB3	1:B:55:PRO:HD3	2.03	0.41
1:C:198:GLN:OE1	2:C:1361:NDP:H2N	2.20	0.41
1:B:62:ARG:NE	4:B:2011:HOH:O	2.53	0.41
1:C:360:ARG:HD2	4:C:2136:HOH:O	2.20	0.40
1:B:47:GLU:HG2	1:B:319:SER:HA	2.03	0.40
1:D:53:ASP:CG	1:D:55:PRO:HD2	2.42	0.40

There are no symmetry-related clashes.

## 5.3 Torsion angles

### 5.3.1 Protein backbone ⓘ

In the following table, the Percentiles column shows the percent Ramachandran outliers of the chain as a percentile score with respect to all X-ray entries followed by that with respect to entries of similar resolution. The Analysed column shows the number of residues for which the backbone conformation was analysed, and the total number of residues.

Mol	Chain	Analysed	Favoured	Allowed	Outliers	Percentiles	
1	A	321/360 (89%)	312 (97%)	9 (3%)	0	100	100
1	B	316/360 (88%)	308 (98%)	8 (2%)	0	100	100
1	C	316/360 (88%)	309 (98%)	7 (2%)	0	100	100
1	D	321/360 (89%)	312 (97%)	9 (3%)	0	100	100
All	All	1274/1440 (88%)	1241 (97%)	33 (3%)	0	100	100

There are no Ramachandran outliers to report.

### 5.3.2 Protein sidechains ⓘ

In the following table, the Percentiles column shows the percent sidechain outliers of the chain as a percentile score with respect to all X-ray entries followed by that with respect to entries of similar resolution. The Analysed column shows the number of residues for which the sidechain conformation was analysed, and the total number of residues.

Mol	Chain	Analysed	Rotameric	Outliers	Percentiles	
1	A	246/288 (85%)	240 (98%)	6 (2%)	61	81

*Continued on next page...*

*Continued from previous page...*

Mol	Chain	Analysed	Rotameric	Outliers	Percentiles	
1	B	254/288 (88%)	247 (97%)	7 (3%)	56	77
1	C	249/288 (86%)	245 (98%)	4 (2%)	75	89
1	D	250/288 (87%)	244 (98%)	6 (2%)	61	81
All	All	999/1152 (87%)	976 (98%)	23 (2%)	63	82

All (23) residues with a non-rotameric sidechain are listed below:

Mol	Chain	Res	Type
1	A	70	THR
1	A	77	MET
1	A	133	CYS
1	A	256	SER
1	A	318	MET
1	A	350	LEU
1	B	77	MET
1	B	133	CYS
1	B	237	LYS
1	B	256	SER
1	B	288	SER
1	B	318	MET
1	B	332	GLU
1	C	50	ARG
1	C	70	THR
1	C	77	MET
1	C	318	MET
1	D	70	THR
1	D	77	MET
1	D	133	CYS
1	D	256	SER
1	D	318	MET
1	D	332	GLU

Some sidechains can be flipped to improve hydrogen bonding and reduce clashes. All (7) such sidechains are listed below:

Mol	Chain	Res	Type
1	A	310	HIS
1	A	353	HIS
1	B	269	HIS
1	B	353	HIS
1	C	353	HIS

*Continued on next page...*

*Continued from previous page...*

Mol	Chain	Res	Type
1	D	305	GLN
1	D	310	HIS

### 5.3.3 RNA ⓘ

There are no RNA chains in this entry.

## 5.4 Non-standard residues in protein, DNA, RNA chains ⓘ

There are no non-standard protein/DNA/RNA residues in this entry.

## 5.5 Carbohydrates ⓘ

There are no carbohydrates in this entry.

## 5.6 Ligand geometry ⓘ

8 ligands are modelled in this entry.

In the following table, the Counts columns list the number of bonds (or angles) for which Mogul statistics could be retrieved, the number of bonds (or angles) that are observed in the model and the number of bonds (or angles) that are defined in the chemical component dictionary. The Link column lists molecule types, if any, to which the group is linked. The Z score for a bond length (or angle) is the number of standard deviations the observed value is removed from the expected value. A bond length (or angle) with  $|Z| > 2$  is considered an outlier worth inspection. RMSZ is the root-mean-square of all Z scores of the bond lengths (or angles).

Mol	Type	Chain	Res	Link	Bond lengths			Bond angles		
					Counts	RMSZ	# Z  > 2	Counts	RMSZ	# Z  > 2
2	NDP	A	1361	-	52,52,52	1.30	5 (9%)	80,80,80	1.37	7 (8%)
3	FLC	A	1362	-	5,12,12	3.15	2 (40%)	7,17,17	0.83	0
2	NDP	B	1361	-	52,52,52	1.38	5 (9%)	80,80,80	1.56	5 (6%)
3	FLC	B	1362	-	5,12,12	2.59	2 (40%)	7,17,17	1.10	0
2	NDP	C	1361	-	52,52,52	1.42	5 (9%)	80,80,80	1.44	3 (3%)
3	FLC	C	1362	-	5,12,12	2.23	2 (40%)	7,17,17	1.00	0
2	NDP	D	1361	-	52,52,52	1.34	4 (7%)	80,80,80	1.66	8 (10%)
3	FLC	D	1362	-	5,12,12	2.69	2 (40%)	7,17,17	1.24	1 (14%)

In the following table, the Chirals column lists the number of chiral outliers, the number of chiral

centers analysed, the number of these observed in the model and the number defined in the chemical component dictionary. Similar counts are reported in the Torsion and Rings columns. '-' means no outliers of that kind were identified.

Mol	Type	Chain	Res	Link	Chirals	Torsions	Rings
2	NDP	A	1361	-	-	0/35/77/77	0/3/5/5
3	FLC	A	1362	-	-	0/6/16/16	0/0/0/0
2	NDP	B	1361	-	-	0/35/77/77	0/3/5/5
3	FLC	B	1362	-	-	0/6/16/16	0/0/0/0
2	NDP	C	1361	-	-	0/35/77/77	0/3/5/5
3	FLC	C	1362	-	-	0/6/16/16	0/0/0/0
2	NDP	D	1361	-	-	0/35/77/77	0/3/5/5
3	FLC	D	1362	-	-	0/6/16/16	0/0/0/0

All (27) bond length outliers are listed below:

Mol	Chain	Res	Type	Atoms	Z	Observed(Å)	Ideal(Å)
2	B	1361	NDP	O7N-C7N	6.50	1.41	1.24
2	D	1361	NDP	O7N-C7N	6.42	1.41	1.24
2	C	1361	NDP	O7N-C7N	6.40	1.41	1.24
2	A	1361	NDP	O7N-C7N	6.26	1.40	1.24
3	A	1362	FLC	CG-CGC	5.90	1.53	1.49
3	D	1362	FLC	CG-CGC	4.93	1.52	1.49
3	B	1362	FLC	CA-CAC	4.49	1.52	1.49
3	C	1362	FLC	CG-CGC	3.89	1.52	1.49
3	A	1362	FLC	CA-CAC	3.74	1.52	1.49
3	B	1362	FLC	CG-CGC	3.32	1.51	1.49
3	D	1362	FLC	CA-CAC	3.21	1.51	1.49
2	B	1361	NDP	C2A-N3A	3.04	1.38	1.32
3	C	1362	FLC	CA-CAC	2.85	1.51	1.49
2	C	1361	NDP	C2A-N3A	2.80	1.37	1.32
2	C	1361	NDP	C6N-C5N	2.80	1.39	1.33
2	D	1361	NDP	C2A-N3A	2.73	1.37	1.32
2	D	1361	NDP	C2A-N1A	2.70	1.39	1.33
2	A	1361	NDP	C2A-N3A	2.67	1.37	1.32
2	C	1361	NDP	C2N-C3N	2.63	1.39	1.34
2	C	1361	NDP	C2A-N1A	2.49	1.38	1.33
2	B	1361	NDP	C2A-N1A	2.43	1.38	1.33
2	B	1361	NDP	C2N-C3N	2.34	1.39	1.34
2	D	1361	NDP	C6N-C5N	2.25	1.38	1.33
2	A	1361	NDP	C6N-C5N	2.24	1.38	1.33
2	A	1361	NDP	C2A-N1A	2.12	1.38	1.33
2	A	1361	NDP	PN-O2N	-2.11	1.45	1.55
2	B	1361	NDP	PN-O3	2.03	1.63	1.59

All (24) bond angle outliers are listed below:

Mol	Chain	Res	Type	Atoms	Z	Observed(°)	Ideal(°)
2	B	1361	NDP	N3A-C2A-N1A	-10.09	120.27	128.71
2	D	1361	NDP	N3A-C2A-N1A	-9.92	120.42	128.71
2	C	1361	NDP	N3A-C2A-N1A	-9.04	121.15	128.71
2	A	1361	NDP	N3A-C2A-N1A	-7.76	122.22	128.71
2	B	1361	NDP	P2B-O2B-C2B	3.83	130.02	121.96
2	D	1361	NDP	C4A-C5A-N7A	-3.55	106.48	109.52
2	D	1361	NDP	N3A-C4A-N9A	3.29	131.37	125.43
2	A	1361	NDP	N3A-C4A-N9A	2.84	130.56	125.43
2	C	1361	NDP	N3A-C4A-N9A	2.84	130.56	125.43
2	B	1361	NDP	N3A-C4A-N9A	2.73	130.37	125.43
2	D	1361	NDP	C5A-C4A-N3A	-2.72	119.77	125.70
3	D	1362	FLC	CA-CB-CBC	-2.58	105.99	111.21
2	A	1361	NDP	P2B-O2B-C2B	2.48	127.18	121.96
2	B	1361	NDP	O2B-P2B-O1X	2.45	113.63	106.79
2	A	1361	NDP	O3X-P2B-O2B	2.39	113.98	107.09
2	A	1361	NDP	O2X-P2B-O1X	2.36	118.16	110.44
2	D	1361	NDP	PN-O3-PA	-2.36	124.76	131.68
2	D	1361	NDP	C2A-N3A-C4A	2.30	120.57	114.01
2	B	1361	NDP	PN-O3-PA	-2.27	125.02	131.68
2	A	1361	NDP	O7N-C7N-C3N	-2.23	116.32	120.51
2	D	1361	NDP	O2B-C2B-C3B	-2.21	102.87	111.54
2	D	1361	NDP	C3D-C2D-C1D	2.10	105.52	101.35
2	A	1361	NDP	O4B-C1B-C2B	-2.09	105.00	106.95
2	C	1361	NDP	C5A-C4A-N3A	-2.01	121.33	125.70

There are no chirality outliers.

There are no torsion outliers.

There are no ring outliers.

## 5.7 Other polymers ⓘ

There are no such residues in this entry.

## 5.8 Polymer linkage issues

There are no chain breaks in this entry.

## 6 Fit of model and data ⓘ

### 6.1 Protein, DNA and RNA chains ⓘ

In the following table, the column labelled ‘#RSRZ> 2’ contains the number (and percentage) of RSRZ outliers, followed by percent RSRZ outliers for the chain as percentile scores relative to all X-ray entries and entries of similar resolution. The OWAB column contains the minimum, median, 95<sup>th</sup> percentile and maximum values of the occupancy-weighted average B-factor per residue. The column labelled ‘Q< 0.9’ lists the number of (and percentage) of residues with an average occupancy less than 0.9.

Mol	Chain	Analysed	<RSRZ>	#RSRZ>2	OWAB(Å <sup>2</sup> )	Q<0.9
1	A	323/360 (89%)	-0.30	6 (1%) 64 61	22, 31, 42, 62	0
1	B	320/360 (88%)	-0.34	3 (0%) 81 81	22, 31, 42, 59	0
1	C	320/360 (88%)	-0.47	2 (0%) 86 86	22, 31, 43, 56	0
1	D	323/360 (89%)	-0.19	7 (2%) 59 57	22, 31, 41, 49	0
All	All	1286/1440 (89%)	-0.32	18 (1%) 72 71	22, 31, 42, 62	0

All (18) RSRZ outliers are listed below:

Mol	Chain	Res	Type	RSRZ
1	A	245	GLY	4.0
1	D	288	SER	4.0
1	C	245	GLY	3.5
1	D	282	GLN	3.3
1	D	287	ALA	3.0
1	D	285	TYR	3.0
1	A	254	GLY	2.9
1	A	244	ASP	2.9
1	A	247	GLN	2.7
1	D	284	ALA	2.6
1	B	288	SER	2.4
1	D	283	ALA	2.3
1	D	286	GLY	2.3
1	B	285	TYR	2.2
1	B	287	ALA	2.2
1	A	253	PHE	2.2
1	A	249	VAL	2.1
1	C	99	CYS	2.0



## 6.2 Non-standard residues in protein, DNA, RNA chains ⓘ

There are no non-standard protein/DNA/RNA residues in this entry.

## 6.3 Carbohydrates ⓘ

There are no carbohydrates in this entry.

## 6.4 Ligands ⓘ

In the following table, the Atoms column lists the number of modelled atoms in the group and the number defined in the chemical component dictionary. LLDF column lists the quality of electron density of the group with respect to its neighbouring residues in protein, DNA or RNA chains. The B-factors column lists the minimum, median, 95<sup>th</sup> percentile and maximum values of B factors of atoms in the group. The column labelled 'Q< 0.9' lists the number of atoms with occupancy less than 0.9.

Mol	Type	Chain	Res	Atoms	RSR	LLDF	B-factors(Å <sup>2</sup> )	Q<0.9
3	FLC	C	1362	13/13	0.19	2.73	43,56,61,61	0
3	FLC	A	1362	13/13	0.18	2.01	35,53,63,65	0
3	FLC	D	1362	13/13	0.15	1.16	38,43,54,59	0
3	FLC	B	1362	13/13	0.12	0.22	35,45,54,57	0
2	NDP	D	1361	48/48	0.10	-0.76	17,27,33,43	0
2	NDP	B	1361	48/48	0.10	-1.04	11,21,29,33	0
2	NDP	A	1361	48/48	0.10	-1.14	11,23,29,37	0
2	NDP	C	1361	48/48	0.09	-1.49	12,24,32,43	0

## 6.5 Other polymers ⓘ

There are no such residues in this entry.