



# Full wwPDB X-ray Structure Validation Report

Feb 27, 2014 – 03:23 PM GMT

PDB ID : 3BRE  
Title : Crystal Structure of P.aeruginosa PA3702  
Authors : De, N.; Pirruccello, M.; Krasteva, P.V.; Bae, N.; Raghavan, R.V.; Sondermann, H.  
Deposited on : 2007-12-21  
Resolution : 2.40 Å(reported)

This is a full wwPDB validation report for a publicly released PDB entry.  
We welcome your comments at [validation@mail.wwpdb.org](mailto:validation@mail.wwpdb.org)  
A user guide is available at <http://wwpdb.org/ValidationPDFNotes.html>

---

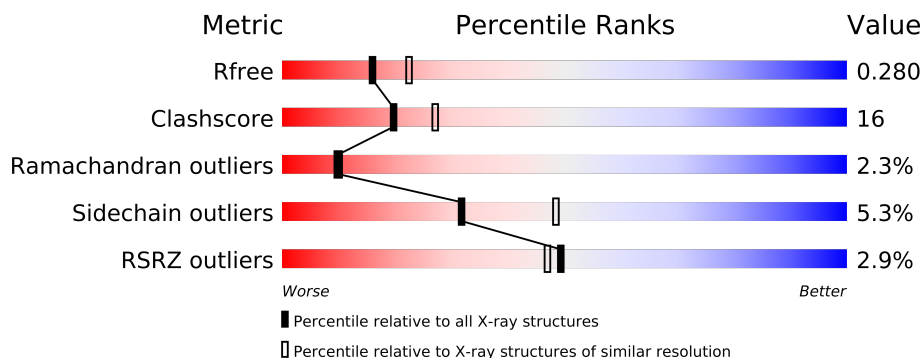
The following versions of software and data (see [references](#)) were used in the production of this report:

MolProbity	:	4.02b-467
Mogul	:	1.15 2013
Xtriage (Phenix)	:	dev-1323
EDS	:	stable22639
Percentile statistics	:	21963
Refmac	:	5.8.0049
CCP4	:	6.3.0 (Settle)
Ideal geometry (proteins)	:	Engh & Huber (2001)
Ideal geometry (DNA, RNA)	:	Parkinson et. al. (1996)
Validation Pipeline (wwPDB-VP)	:	stable22683

# 1 Overall quality at a glance

The reported resolution of this entry is 2.40 Å.

Percentile scores (ranging between 0-100) for global validation metrics of the entry are shown in the following graphic. The table shows the number of entries on which the scores are based.



Metric	Whole archive (#Entries)	Similar resolution (#Entries, resolution range(Å))
$R_{free}$	66092	2207 (2.40-2.40)
Clashscore	79885	2789 (2.40-2.40)
Ramachandran outliers	78287	2736 (2.40-2.40)
Sidechain outliers	78261	2737 (2.40-2.40)
RSRZ outliers	66119	2210 (2.40-2.40)

The table below summarises the geometric issues observed across the polymeric chains and their fit to the electron density. The red, orange, yellow and green segments on the lower bar indicate the fraction of residues that contain outliers for  $\geq 3$ , 2, 1 and 0 types of geometric quality criteria. The upper red bar (where present) indicates the fraction of residues that have poor fit to the electron density.

Mol	Chain	Length	Quality of chain
1	A	358	
1	B	358	

## 2 Entry composition

There are 3 unique types of molecules in this entry. The entry contains 5182 atoms, of which 0 are hydrogen and 0 are deuterium.

In the tables below, the ZeroOcc column contains the number of atoms modelled with zero occupancy, the AltConf column contains the number of residues with at least one atom in alternate conformation and the Trace column contains the number of residues modelled with at most 2 atoms.

- Molecule 1 is a protein called Probable two-component response regulator.

Mol	Chain	Residues	Atoms					ZeroOcc	AltConf	Trace
1	A	322	Total	C	N	O	S	0	0	0
			2485	1546	451	477	11			
1	B	328	Total	C	N	O	S	0	0	0
			2511	1563	456	482	10			

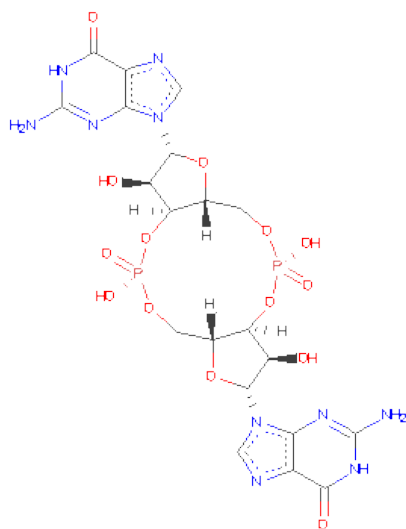
There are 22 discrepancies between the modelled and reference sequences:

Chain	Residue	Modelled	Actual	Comment	Reference
A	348	ALA	-	EXPRESSION TAG	UNP Q9HXT9
A	349	ALA	-	EXPRESSION TAG	UNP Q9HXT9
A	350	ALA	-	EXPRESSION TAG	UNP Q9HXT9
A	351	LEU	-	EXPRESSION TAG	UNP Q9HXT9
A	352	GLU	-	EXPRESSION TAG	UNP Q9HXT9
A	353	HIS	-	EXPRESSION TAG	UNP Q9HXT9
A	354	HIS	-	EXPRESSION TAG	UNP Q9HXT9
A	355	HIS	-	EXPRESSION TAG	UNP Q9HXT9
A	356	HIS	-	EXPRESSION TAG	UNP Q9HXT9
A	357	HIS	-	EXPRESSION TAG	UNP Q9HXT9
A	358	HIS	-	EXPRESSION TAG	UNP Q9HXT9
B	348	ALA	-	EXPRESSION TAG	UNP Q9HXT9
B	349	ALA	-	EXPRESSION TAG	UNP Q9HXT9
B	350	ALA	-	EXPRESSION TAG	UNP Q9HXT9
B	351	LEU	-	EXPRESSION TAG	UNP Q9HXT9
B	352	GLU	-	EXPRESSION TAG	UNP Q9HXT9
B	353	HIS	-	EXPRESSION TAG	UNP Q9HXT9
B	354	HIS	-	EXPRESSION TAG	UNP Q9HXT9
B	355	HIS	-	EXPRESSION TAG	UNP Q9HXT9
B	356	HIS	-	EXPRESSION TAG	UNP Q9HXT9
B	357	HIS	-	EXPRESSION TAG	UNP Q9HXT9
B	358	HIS	-	EXPRESSION TAG	UNP Q9HXT9

- Molecule 2 is MAGNESIUM ION (three-letter code: MG) (formula: Mg).

Mol	Chain	Residues	Atoms	ZeroOcc	AltConf
2	B	1	Total Mg 1 1	0	0
2	A	1	Total Mg 1 1	0	0

- Molecule 3 is 9,9'-[(2R,3R,3AS,5S,7AR,9R,10R,10AS,12S,14AR)-3,5,10,12-TETRAHYDROXY-5,12-DIOXIDOOCTAHYDRO-2H,7H-DIFURO[3,2-D:3',2'-J][1,3,7,9,2,8]TETRAOXA DIPHOSPHACYCLODODECINE-2,9-DIYL]BIS(2-AMINO-1,9-DIHYDRO-6H-PURIN-6-ONE) (three-letter code: C2E) (formula: C<sub>20</sub>H<sub>24</sub>N<sub>10</sub>O<sub>14</sub>P<sub>2</sub>).



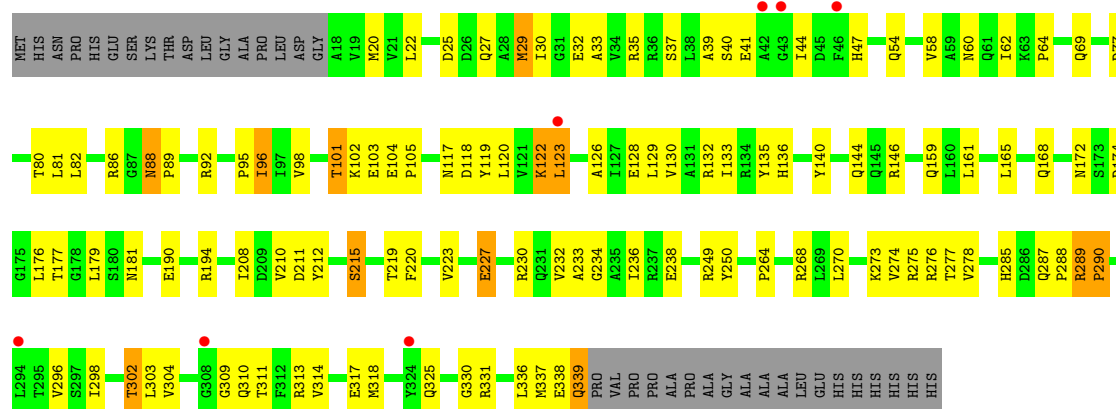
Mol	Chain	Residues	Atoms	ZeroOcc	AltConf
3	B	1	Total C N O P 46 20 10 14 2	0	0
3	B	1	Total C N O P 46 20 10 14 2	0	0
3	A	1	Total C N O P 46 20 10 14 2	0	0
3	A	1	Total C N O P 46 20 10 14 2	0	0

### 3 Residue-property plots

These plots are drawn for all protein, RNA and DNA chains in the entry. The first graphic for a chain summarises the proportions of errors displayed in the second graphic. The second graphic shows the sequence view annotated by issues in geometry and electron density. Residues are color-coded according to the number of geometric quality criteria for which they contain at least one outlier: green = 0, yellow = 1, orange = 2 and red = 3 or more. A red dot above a residue indicates a poor fit to the electron density ( $RSRZ > 2$ ). Stretches of 2 or more consecutive residues without any outlier are shown as a green connector. Residues present in the sample, but not in the model, are shown in grey.

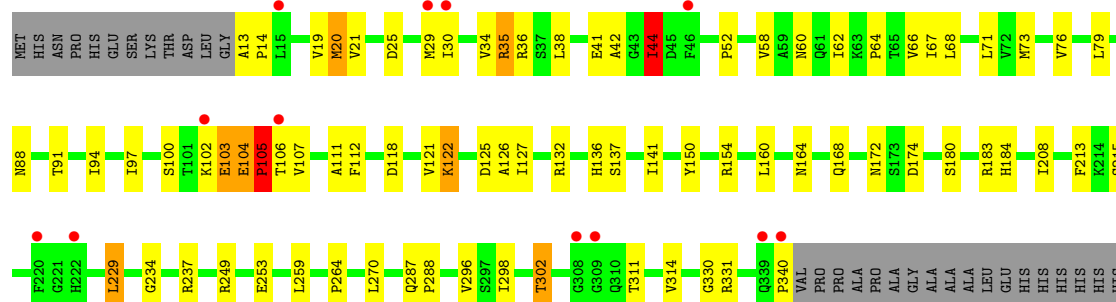
- Molecule 1: Probable two-component response regulator

Chain A: 



- Molecule 1: Probable two-component response regulator

Chain B: 



## 4 Data and refinement statistics

Property	Value	Source
Space group	C 1 2 1	Depositor
Cell constants a, b, c, $\alpha$ , $\beta$ , $\gamma$	144.51Å 72.75Å 106.09Å 90.00° 110.79° 90.00°	Depositor
Resolution (Å)	33.78 – 2.40 48.41 – 2.39	Depositor EDS
% Data completeness (in resolution range)	91.5 (33.78-2.40) 90.5 (48.41-2.39)	Depositor EDS
$R_{merge}$	0.07	Depositor
$R_{sym}$	0.05	Depositor
$\langle I/\sigma(I) \rangle$ <sup>1</sup>	2.91 (at 2.39Å)	Xtriage
Refinement program	CNS 1.2	Depositor
R, $R_{free}$	0.242 , 0.278 0.244 , 0.280	Depositor DCC
$R_{free}$ test set	2707 reflections (7.30%)	DCC
Wilson B-factor (Å <sup>2</sup> )	51.0	Xtriage
Anisotropy	0.185	Xtriage
Bulk solvent $k_{sol}$ (e/Å <sup>3</sup> ), $B_{sol}$ (Å <sup>2</sup> )	0.32 , 35.4	EDS
Estimated twinning fraction	No twinning to report.	Xtriage
L-test for twinning	$\langle  L  \rangle = 0.48$ , $\langle L^2 \rangle = 0.32$	Xtriage
Outliers	0 of 40110 reflections	Xtriage
$F_o, F_c$ correlation	0.94	EDS
Total number of atoms	5182	wwPDB-VP
Average B, all atoms (Å <sup>2</sup> )	67.0	wwPDB-VP

Xtriage's analysis on translational NCS is as follows: *The largest off-origin peak in the Patterson function is 5.43% of the height of the origin peak. No significant pseudotranslation is detected.*

<sup>1</sup>Intensities estimated from amplitudes.

## 5 Model quality

### 5.1 Standard geometry

Bond lengths and bond angles in the following residue types are not validated in this section: MG, C2E

The Z score for a bond length (or angle) is the number of standard deviations the observed value is removed from the expected value. A bond length (or angle) with  $|Z| > 5$  is considered an outlier worth inspection. RMSZ is the root-mean-square of all Z scores of the bond lengths (or angles).

Mol	Chain	Bond lengths		Bond angles	
		RMSZ	$\# Z  > 5$	RMSZ	$\# Z  > 5$
1	A	0.42	0/2522	0.67	1/3412 (0.0%)
1	B	0.41	0/2549	0.66	1/3452 (0.0%)
All	All	0.42	0/5071	0.66	2/6864 (0.0%)

There are no bond length outliers.

All (2) bond angle outliers are listed below:

Mol	Chain	Res	Type	Atoms	Z	Observed(°)	Ideal(°)
1	B	340	PRO	N-CA-CB	5.67	110.10	103.30
1	A	304	VAL	N-CA-C	-5.07	97.32	111.00

There are no chirality outliers.

There are no planarity outliers.

### 5.2 Close contacts

In the following table, the Non-H and H(model) columns list the number of non-hydrogen atoms and hydrogen atoms in the chain respectively. The H(added) column lists the number of hydrogens added by MolProbity. The Clashes column lists the number of clashes within the asymmetric unit, and the number in parentheses is this value normalized per 1000 atoms of the molecule in the chain. The Symm-Clashes column gives symmetry related clashes, in the same way as for the Clashes column.

Mol	Chain	Non-H	H(model)	H(added)	Clashes	Symm-Clashes
1	A	2485	0	2484	101	0
1	B	2511	0	2498	68	0
2	A	1	0	0	0	0
2	B	1	0	0	0	0
3	A	92	0	44	1	0

*Continued on next page...*

*Continued from previous page...*

Mol	Chain	Non-H	H(model)	H(added)	Clashes	Symm-Clashes
3	B	92	0	44	0	0
All	All	5182	0	5070	165	0

Clashscore is defined as the number of clashes calculated for the entry per 1000 atoms (including hydrogens) of the entry. The overall clashscore for this entry is 16.

All (165) close contacts within the same asymmetric unit are listed below.

Atom-1	Atom-2	Distance(Å)	Clash(Å)
1:A:227:GLU:HG3	1:A:230:ARG:HH12	1.31	0.96
1:A:275:ARG:O	1:A:278:VAL:HG12	1.78	0.84
1:A:119:TYR:O	1:A:120:LEU:HD23	1.78	0.83
1:A:96:ILE:H	1:A:117:ASN:HD22	1.25	0.82
1:A:101:THR:HG23	1:A:102:LYS:H	1.47	0.79
1:A:268:ARG:HD2	1:A:336:LEU:HD21	1.65	0.79
1:A:339:GLN:HA	1:A:339:GLN:HE21	1.50	0.76
1:A:338:GLU:O	1:A:339:GLN:HB2	1.84	0.76
1:A:174:ASP:OD2	1:A:177:THR:HB	1.85	0.75
1:A:208:ILE:HG23	1:A:298:ILE:HG12	1.68	0.75
1:A:311:THR:O	1:A:314:VAL:HG12	1.88	0.73
1:A:278:VAL:HG11	1:A:296:VAL:HG22	1.69	0.72
1:B:29:MET:HG3	1:B:30:ILE:N	2.04	0.71
1:B:52:PRO:HG3	1:B:73:MET:CE	2.20	0.71
1:A:22:LEU:HD12	1:A:62:ILE:HD11	1.73	0.70
1:B:103:GLU:HG2	1:B:105:PRO:CD	2.20	0.70
1:B:311:THR:O	1:B:314:VAL:HG12	1.92	0.70
1:A:135:TYR:OH	1:B:136:HIS:HD2	1.75	0.69
1:A:177:THR:HG23	1:A:233:ALA:HB1	1.76	0.68
1:B:13:ALA:N	1:B:14:PRO:HD2	2.08	0.68
1:A:95:PRO:HA	1:A:117:ASN:ND2	2.10	0.67
1:A:60:ASN:HD21	1:A:88:ASN:ND2	1.93	0.67
1:A:288:PRO:O	1:A:289:ARG:HG2	1.95	0.66
1:B:103:GLU:CD	1:B:105:PRO:HD2	2.16	0.65
1:A:339:GLN:CA	1:A:339:GLN:HE21	2.10	0.65
1:B:103:GLU:HG2	1:B:105:PRO:HD3	1.77	0.65
1:B:35:ARG:HG2	1:B:35:ARG:O	1.96	0.65
1:A:264:PRO:HG3	1:A:302:THR:HG21	1.79	0.65
1:A:223:VAL:O	1:A:227:GLU:HB2	1.97	0.64
1:B:21:VAL:HG11	1:B:38:LEU:HD23	1.79	0.64
1:B:137:SER:O	1:B:141:ILE:HG12	1.98	0.63
1:B:164:ASN:ND2	1:B:168:GLN:HE21	1.97	0.63
1:A:29:MET:HG3	1:A:30:ILE:N	2.13	0.63
1:A:96:ILE:N	1:A:117:ASN:HD22	1.96	0.62

*Continued on next page...*



*Continued from previous page...*

Atom-1	Atom-2	Distance(Å)	Clash(Å)
1:A:177:THR:CG2	1:A:179:LEU:HG	2.30	0.62
1:A:77:ASP:OD1	1:A:80:THR:HG23	2.00	0.61
1:B:102:LYS:O	1:B:103:GLU:HB3	1.99	0.61
1:A:232:VAL:O	1:A:236:ILE:HG13	2.01	0.60
1:B:21:VAL:HG23	1:B:66:VAL:HG13	1.82	0.60
1:B:104:GLU:H	1:B:105:PRO:HD3	1.66	0.60
1:A:177:THR:HG22	1:A:179:LEU:H	1.67	0.59
1:B:52:PRO:HG3	1:B:73:MET:SD	2.43	0.59
1:B:118:ASP:OD1	1:B:132:ARG:HD3	2.02	0.59
1:A:177:THR:HG23	1:A:233:ALA:CB	2.33	0.58
1:B:21:VAL:HG11	1:B:38:LEU:CD2	2.33	0.58
1:A:177:THR:HG21	1:A:179:LEU:HD12	1.86	0.58
1:B:103:GLU:O	1:B:104:GLU:HG3	2.03	0.58
1:B:104:GLU:H	1:B:105:PRO:CD	2.17	0.58
1:A:287:GLN:C	1:A:289:ARG:H	2.07	0.57
1:B:259:LEU:HD13	1:B:270:LEU:HD12	1.86	0.57
1:A:287:GLN:C	1:A:289:ARG:N	2.58	0.57
1:B:234:GLY:HA2	1:B:237:ARG:HH12	1.71	0.56
1:B:68:LEU:HD23	1:B:97:ILE:HB	1.88	0.56
1:A:339:GLN:HA	1:A:339:GLN:NE2	2.17	0.56
1:B:34:VAL:C	1:B:36:ARG:H	2.08	0.56
1:A:215:SER:O	1:A:219:THR:HG22	2.06	0.56
1:A:177:THR:HG22	1:A:179:LEU:HG	1.89	0.55
1:A:190:GLU:CG	1:A:194:ARG:HH12	2.19	0.55
1:B:287:GLN:HG3	1:B:288:PRO:HA	1.89	0.54
1:A:219:THR:HG23	1:A:220:PHE:CD2	2.42	0.54
1:B:172:ASN:CB	1:B:184:HIS:HB2	2.38	0.53
1:A:210:VAL:HA	1:A:296:VAL:HG12	1.90	0.53
1:B:20:MET:HB3	1:B:64:PRO:HA	1.89	0.53
1:A:101:THR:HG23	1:A:102:LYS:N	2.21	0.53
1:A:174:ASP:OD2	1:A:249:ARG:HD3	2.08	0.53
1:A:120:LEU:HD11	1:A:132:ARG:HD2	1.90	0.52
1:A:22:LEU:C	1:A:22:LEU:HD23	2.29	0.52
1:B:104:GLU:N	1:B:105:PRO:CD	2.73	0.52
1:A:77:ASP:CG	1:A:80:THR:HG23	2.29	0.52
1:B:100:SER:O	1:B:122:LYS:HG2	2.10	0.52
1:A:129:LEU:O	1:A:133:ILE:HG13	2.10	0.52
1:A:33:ALA:HB3	1:A:123:LEU:CD1	2.40	0.52
1:B:104:GLU:O	1:B:106:THR:N	2.43	0.52
1:B:103:GLU:CG	1:B:105:PRO:HD2	2.40	0.51
1:A:89:PRO:HA	1:A:92:ARG:HD3	1.91	0.51
1:B:103:GLU:HG2	1:B:105:PRO:HD2	1.89	0.51

*Continued on next page...*

*Continued from previous page...*

Atom-1	Atom-2	Distance(Å)	Clash(Å)
1:A:227:GLU:HG3	1:A:230:ARG:NH1	2.14	0.51
1:B:52:PRO:HB2	1:B:76:VAL:HG21	1.93	0.51
1:A:96:ILE:H	1:A:117:ASN:ND2	2.04	0.50
1:B:30:ILE:HD13	1:B:122:LYS:HD2	1.93	0.50
3:A:360:C2E:H512	3:A:360:C2E:H5'2	1.94	0.50
1:A:89:PRO:HA	1:A:92:ARG:CD	2.42	0.50
1:A:128:GLU:HG3	1:B:112:PHE:CD1	2.47	0.50
1:A:39:ALA:C	1:A:41:GLU:H	2.16	0.49
1:B:264:PRO:HA	1:B:302:THR:HG21	1.92	0.49
1:A:27:GLN:HG3	1:A:30:ILE:HD12	1.94	0.49
1:A:32:GLU:OE2	1:A:35:ARG:HD2	2.13	0.49
1:A:135:TYR:CZ	1:B:136:HIS:HD2	2.30	0.49
1:A:287:GLN:O	1:A:289:ARG:N	2.46	0.49
1:B:79:LEU:HD21	1:B:111:ALA:HA	1.95	0.49
1:B:172:ASN:HB2	1:B:184:HIS:CG	2.47	0.49
1:B:58:VAL:O	1:B:62:ILE:HG23	2.13	0.49
1:A:264:PRO:HG3	1:A:302:THR:CG2	2.43	0.48
1:B:25:ASP:OD2	1:B:122:LYS:HE2	2.13	0.48
1:A:20:MET:HG3	1:A:64:PRO:HA	1.95	0.48
1:A:47:HIS:CD2	1:A:62:ILE:HG21	2.49	0.48
1:B:237:ARG:CZ	1:B:237:ARG:HB3	2.44	0.48
1:A:270:LEU:O	1:A:274:VAL:HG23	2.14	0.48
1:A:190:GLU:HG2	1:A:194:ARG:NH1	2.29	0.47
1:A:159:GLN:NE2	1:B:160:LEU:HD13	2.29	0.47
1:B:213:PHE:CE1	1:B:229:LEU:HD13	2.49	0.47
1:A:303:LEU:HD11	1:A:318:MET:SD	2.55	0.47
1:A:30:ILE:CD1	1:A:122:LYS:HD3	2.45	0.47
1:B:79:LEU:CD2	1:B:111:ALA:HA	2.45	0.47
1:A:77:ASP:OD1	1:A:80:THR:CG2	2.62	0.47
1:A:95:PRO:HA	1:A:117:ASN:HD22	1.78	0.46
1:B:19:VAL:HB	1:B:44:ILE:HB	1.97	0.46
1:B:180:SER:OG	1:B:184:HIS:HD2	1.99	0.46
1:B:68:LEU:HD21	1:B:97:ILE:HD12	1.98	0.46
1:A:285:HIS:CD2	1:A:288:PRO:HD3	2.50	0.46
1:A:140:TYR:O	1:A:144:GLN:HG2	2.15	0.46
1:A:60:ASN:HD21	1:A:88:ASN:HD22	1.63	0.46
1:A:103:GLU:HG3	1:A:103:GLU:O	2.16	0.45
1:A:102:LYS:O	1:A:104:GLU:HG3	2.16	0.45
1:B:13:ALA:N	1:B:14:PRO:CD	2.76	0.45
1:B:68:LEU:CD2	1:B:97:ILE:HD12	2.46	0.45
1:A:135:TYR:OH	1:B:136:HIS:CD2	2.63	0.45
1:A:54:GLN:O	1:A:58:VAL:HG23	2.17	0.44

*Continued on next page...*

*Continued from previous page...*

Atom-1	Atom-2	Distance(Å)	Clash(Å)
1:B:208:ILE:HG23	1:B:296:VAL:CG1	2.47	0.44
1:A:86:ARG:HH22	1:A:117:ASN:HD21	1.65	0.44
1:B:103:GLU:O	1:B:104:GLU:CG	2.65	0.44
1:A:172:ASN:HA	1:A:181:ASN:HD21	1.83	0.44
1:A:330:GLY:O	1:A:331:ARG:HB2	2.18	0.44
1:B:42:ALA:C	1:B:44:ILE:H	2.20	0.44
1:A:313:ARG:O	1:A:317:GLU:HG3	2.18	0.44
1:A:20:MET:CG	1:A:64:PRO:HA	2.48	0.43
1:B:150:TYR:O	1:B:154:ARG:HG3	2.19	0.43
1:B:330:GLY:O	1:B:331:ARG:HB2	2.19	0.43
1:A:146:ARG:C	1:A:146:ARG:HD2	2.38	0.43
1:A:82:LEU:HD12	1:A:82:LEU:O	2.19	0.43
1:B:41:GLU:O	1:B:44:ILE:HG23	2.19	0.43
1:B:259:LEU:CD1	1:B:270:LEU:HD12	2.47	0.43
1:A:273:LYS:O	1:A:277:THR:HG23	2.18	0.43
1:A:288:PRO:O	1:A:289:ARG:CG	2.66	0.43
1:B:174:ASP:OD2	1:B:249:ARG:HD3	2.18	0.43
1:A:25:ASP:OD2	1:A:122:LYS:HE2	2.19	0.42
1:B:125:ASP:O	1:B:127:ILE:N	2.52	0.42
1:B:88:ASN:HB3	1:B:91:THR:OG1	2.19	0.42
1:A:82:LEU:HD13	1:A:96:ILE:HD13	2.01	0.42
1:A:89:PRO:HA	1:A:92:ARG:HG2	2.01	0.42
1:A:339:GLN:NE2	1:A:339:GLN:CA	2.80	0.42
1:A:268:ARG:CD	1:A:336:LEU:HD21	2.40	0.42
1:A:273:LYS:HG3	1:A:276:ARG:HH22	1.85	0.42
1:A:227:GLU:HA	1:A:230:ARG:NH1	2.34	0.42
1:A:234:GLY:O	1:A:238:GLU:HG3	2.20	0.42
1:A:69:GLN:O	1:A:98:VAL:HA	2.20	0.42
1:A:190:GLU:CG	1:A:194:ARG:NH1	2.83	0.42
1:B:296:VAL:HG12	1:B:298:ILE:HG13	2.01	0.41
1:A:118:ASP:OD1	1:A:136:HIS:HE1	2.03	0.41
1:A:177:THR:CG2	1:A:233:ALA:HB1	2.49	0.41
1:A:29:MET:HG3	1:A:30:ILE:H	1.83	0.41
1:B:71:LEU:HD13	1:B:107:VAL:HG11	2.01	0.41
1:B:34:VAL:C	1:B:36:ARG:N	2.73	0.41
1:A:69:GLN:NE2	1:A:81:LEU:HD12	2.35	0.41
1:A:211:ASP:OD1	1:A:331:ARG:HD3	2.21	0.41
1:A:336:LEU:HD12	1:A:336:LEU:N	2.36	0.41
1:B:64:PRO:HG2	1:B:94:ILE:HD13	2.03	0.41
1:B:30:ILE:HD13	1:B:122:LYS:CE	2.51	0.41
1:A:30:ILE:HD13	1:A:122:LYS:HD3	2.02	0.41
1:A:212:TYR:CD1	1:A:288:PRO:HG3	2.56	0.41

*Continued on next page...*

Continued from previous page...

Atom-1	Atom-2	Distance(Å)	Clash(Å)
1:B:44:ILE:HG12	1:B:44:ILE:O	2.21	0.40
1:A:194:ARG:HG3	1:A:194:ARG:HH11	1.86	0.40
1:A:126:ALA:O	1:A:130:VAL:HG13	2.20	0.40
1:B:121:VAL:O	1:B:122:LYS:C	2.59	0.40
1:A:288:PRO:O	1:A:289:ARG:CB	2.70	0.40

There are no symmetry-related clashes.

## 5.3 Torsion angles

### 5.3.1 Protein backbone ⓘ

In the following table, the Percentiles column shows the percent Ramachandran outliers of the chain as a percentile score with respect to all X-ray entries followed by that with respect to entries of similar resolution. The Analysed column shows the number of residues for which the backbone conformation was analysed, and the total number of residues.

Mol	Chain	Analysed	Favoured	Allowed	Outliers	Percentiles	
1	A	320/358 (89%)	296 (92%)	15 (5%)	9 (3%)	8	6
1	B	326/358 (91%)	302 (93%)	18 (6%)	6 (2%)	13	15
All	All	646/716 (90%)	598 (93%)	33 (5%)	15 (2%)	10	10

All (15) Ramachandran outliers are listed below:

Mol	Chain	Res	Type
1	A	289	ARG
1	A	310	GLN
1	B	104	GLU
1	B	105	PRO
1	B	126	ALA
1	A	37	SER
1	A	122	LYS
1	A	290	PRO
1	A	309	GLY
1	B	122	LYS
1	B	35	ARG
1	A	40	SER
1	A	123	LEU
1	A	105	PRO
1	B	44	ILE

### 5.3.2 Protein sidechains ⓘ

In the following table, the Percentiles column shows the percent sidechain outliers of the chain as a percentile score with respect to all X-ray entries followed by that with respect to entries of similar resolution. The Analysed column shows the number of residues for which the sidechain conformation was analysed, and the total number of residues.

Mol	Chain	Analysed	Rotameric	Outliers	Percentiles	
1	A	264/291 (91%)	247 (94%)	17 (6%)	25	37
1	B	264/291 (91%)	253 (96%)	11 (4%)	40	60
All	All	528/582 (91%)	500 (95%)	28 (5%)	32	48

All (28) residues with a non-rotameric sidechain are listed below:

Mol	Chain	Res	Type
1	A	29	MET
1	A	44	ILE
1	A	88	ASN
1	A	96	ILE
1	A	101	THR
1	A	161	LEU
1	A	165	LEU
1	A	168	GLN
1	A	176	LEU
1	A	215	SER
1	A	227	GLU
1	A	250	TYR
1	A	290	PRO
1	A	302	THR
1	A	325	GLN
1	A	337	MET
1	A	339	GLN
1	B	20	MET
1	B	44	ILE
1	B	60	ASN
1	B	67	ILE
1	B	103	GLU
1	B	105	PRO
1	B	183	ARG
1	B	215	SER
1	B	229	LEU
1	B	253	GLU
1	B	302	THR

Some sidechains can be flipped to improve hydrogen bonding and reduce clashes. All (14) such sidechains are listed below:

Mol	Chain	Res	Type
1	A	47	HIS
1	A	54	GLN
1	A	60	ASN
1	A	117	ASN
1	A	136	HIS
1	A	159	GLN
1	A	184	HIS
1	A	329	ASN
1	A	339	GLN
1	B	136	HIS
1	B	164	ASN
1	B	184	HIS
1	B	202	GLN
1	B	325	GLN

### 5.3.3 RNA ⓘ

There are no RNA chains in this entry.

## 5.4 Non-standard residues in protein, DNA, RNA chains ⓘ

There are no non-standard protein/DNA/RNA residues in this entry.

## 5.5 Carbohydrates ⓘ

There are no carbohydrates in this entry.

## 5.6 Ligand geometry ⓘ

Of 6 ligands modelled in this entry, 2 are monoatomic - leaving 4 for Mogul analysis.

In the following table, the Counts columns list the number of bonds (or angles) for which Mogul statistics could be retrieved, the number of bonds (or angles) that are observed in the model and the number of bonds (or angles) that are defined in the chemical component dictionary. The Link column lists molecule types, if any, to which the group is linked. The Z score for a bond length (or angle) is the number of standard deviations the observed value is removed from the expected value. A bond length (or angle) with  $|Z| > 2$  is considered an outlier worth inspection. RMSZ is the root-mean-square of all Z scores of the bond lengths (or angles).

Mol	Type	Chain	Res	Link	Bond lengths			Bond angles		
					Counts	RMSZ	# Z  > 2	Counts	RMSZ	# Z  > 2
3	C2E	A	360	-	52,52,52	1.62	10 (19%)	76,82,82	3.95	15 (19%)
3	C2E	A	361	-	52,52,52	1.68	9 (17%)	76,82,82	3.29	16 (21%)
3	C2E	B	360	-	52,52,52	1.66	10 (19%)	76,82,82	3.59	14 (18%)
3	C2E	B	361	-	52,52,52	1.55	10 (19%)	76,82,82	3.20	16 (21%)

In the following table, the Chirals column lists the number of chiral outliers, the number of chiral centers analysed, the number of these observed in the model and the number defined in the chemical component dictionary. Similar counts are reported in the Torsion and Rings columns. '-' means no outliers of that kind were identified.

Mol	Type	Chain	Res	Link	Chirals	Torsions	Rings
3	C2E	A	360	-	-	0/30/62/62	0/0/7/7
3	C2E	A	361	-	-	0/30/62/62	0/0/7/7
3	C2E	B	360	-	-	0/30/62/62	0/0/7/7
3	C2E	B	361	-	-	0/30/62/62	0/0/7/7

All (39) bond length outliers are listed below:

Mol	Chain	Res	Type	Atoms	Z	Observed(Å)	Ideal(Å)
3	A	360	C2E	C6-C5	5.34	1.49	1.41
3	A	360	C2E	C61-C51	5.33	1.49	1.41
3	B	360	C2E	C6-C5	4.86	1.49	1.41
3	A	361	C2E	C6-C5	4.85	1.49	1.41
3	B	361	C2E	C61-C51	4.72	1.48	1.41
3	A	361	C2E	C61-C51	4.63	1.48	1.41
3	B	360	C2E	C61-C51	4.50	1.48	1.41
3	B	361	C2E	C6-C5	4.21	1.48	1.41
3	A	361	C2E	C5-C4	3.75	1.49	1.40
3	B	360	C2E	C5-C4	3.72	1.48	1.40
3	B	361	C2E	C5-C4	3.68	1.48	1.40
3	B	360	C2E	C51-C41	3.64	1.48	1.40
3	A	361	C2E	C21-N31	3.58	1.38	1.33
3	A	360	C2E	C5-C4	3.57	1.48	1.40
3	A	360	C2E	C51-C41	3.50	1.48	1.40
3	B	361	C2E	C51-C41	3.47	1.48	1.40
3	A	361	C2E	C51-C41	3.41	1.48	1.40
3	B	360	C2E	C2-N3	3.35	1.37	1.33
3	B	360	C2E	C41-N91	-3.22	1.33	1.37
3	A	361	C2E	C21-N21	3.05	1.37	1.32
3	A	361	C2E	C2-N3	2.94	1.37	1.33
3	B	361	C2E	C2-N3	2.89	1.37	1.33

*Continued on next page...*

*Continued from previous page...*

Mol	Chain	Res	Type	Atoms	Z	Observed(Å)	Ideal(Å)
3	B	360	C2E	C21-N31	2.88	1.37	1.33
3	A	360	C2E	C4-N9	-2.80	1.33	1.37
3	A	361	C2E	C41-N91	-2.73	1.33	1.37
3	B	360	C2E	C4-N9	-2.69	1.33	1.37
3	B	360	C2E	O4'-C1'	2.59	1.45	1.41
3	B	361	C2E	C41-N91	-2.58	1.34	1.37
3	B	361	C2E	C21-N31	2.55	1.36	1.33
3	A	360	C2E	C2-N3	2.50	1.36	1.33
3	A	361	C2E	C4-N9	-2.44	1.34	1.37
3	B	361	C2E	C4-N9	-2.42	1.34	1.37
3	B	361	C2E	O4'-C1'	2.35	1.44	1.41
3	A	360	C2E	C41-N91	-2.27	1.34	1.37
3	B	360	C2E	C2-N2	2.23	1.35	1.32
3	B	361	C2E	C21-N21	2.20	1.35	1.32
3	A	360	C2E	O4'-C1'	2.09	1.44	1.41
3	A	360	C2E	C21-N21	2.08	1.35	1.32
3	A	360	C2E	C21-N31	2.06	1.36	1.33

All (61) bond angle outliers are listed below:

Mol	Chain	Res	Type	Atoms	Z	Observed(°)	Ideal(°)
3	A	360	C2E	C61-C51-N71	25.64	137.59	134.14
3	B	360	C2E	C61-C51-N71	21.95	137.09	134.14
3	B	361	C2E	C61-C51-N71	19.27	136.74	134.14
3	A	361	C2E	C61-C51-N71	18.41	136.62	134.14
3	A	360	C2E	C6-C5-N7	17.20	136.46	134.14
3	B	360	C2E	C6-C5-N7	16.78	136.40	134.14
3	A	361	C2E	C6-C5-N7	15.95	136.29	134.14
3	B	361	C2E	C6-C5-N7	13.44	135.95	134.14
3	B	361	C2E	N3-C4-N9	5.18	134.51	126.91
3	A	361	C2E	N3-C4-N9	5.14	134.45	126.91
3	B	360	C2E	N3-C4-N9	5.05	134.31	126.91
3	A	360	C2E	N3-C4-N9	4.89	134.08	126.91
3	B	361	C2E	N31-C41-N91	4.70	133.81	126.91
3	A	361	C2E	N31-C41-N91	4.65	133.73	126.91
3	B	361	C2E	C5-C4-N3	-4.57	119.32	125.94
3	B	360	C2E	C5-C4-N3	-4.57	119.32	125.94
3	A	361	C2E	C5-C4-N3	-4.47	119.46	125.94
3	A	360	C2E	C2-N3-C4	4.41	121.29	115.09
3	A	360	C2E	C5-C4-N3	-4.38	119.59	125.94
3	B	360	C2E	N31-C41-N91	4.35	133.30	126.91
3	B	360	C2E	C2-N3-C4	4.26	121.07	115.09

*Continued on next page...*



*Continued from previous page...*

Mol	Chain	Res	Type	Atoms	Z	Observed(°)	Ideal(°)
3	A	360	C2E	C51-C41-N31	-4.22	119.83	125.94
3	B	361	C2E	C51-C41-N31	-4.19	119.88	125.94
3	B	360	C2E	C51-C41-N31	-4.12	119.98	125.94
3	A	360	C2E	N31-C41-N91	4.07	132.88	126.91
3	A	361	C2E	C51-C41-N31	-4.06	120.06	125.94
3	A	360	C2E	C21-N31-C41	4.04	120.76	115.09
3	A	360	C2E	C41-C51-N71	-4.03	106.07	109.52
3	A	361	C2E	C2-N3-C4	3.98	120.69	115.09
3	B	361	C2E	C2-N3-C4	3.92	120.60	115.09
3	B	361	C2E	C21-N31-C41	3.80	120.43	115.09
3	A	361	C2E	C21-N31-C41	3.77	120.39	115.09
3	A	361	C2E	C41-C51-N71	-3.75	106.31	109.52
3	B	360	C2E	C21-N31-C41	3.66	120.23	115.09
3	B	360	C2E	C41-C51-N71	-3.55	106.48	109.52
3	B	361	C2E	C41-C51-N71	-3.41	106.60	109.52
3	A	361	C2E	C3'-C2'-C1'	3.03	107.18	99.98
3	A	360	C2E	C4-C5-N7	-2.99	106.96	109.52
3	B	361	C2E	C3'-C2'-C1'	2.90	106.86	99.98
3	B	361	C2E	C4-C5-N7	-2.79	107.14	109.52
3	A	360	C2E	C3'-C2'-C1'	2.78	106.58	99.98
3	B	360	C2E	C4-C5-N7	-2.77	107.15	109.52
3	A	361	C2E	C4-C5-N7	-2.71	107.20	109.52
3	B	360	C2E	C3'-C2'-C1'	2.66	106.30	99.98
3	B	361	C2E	C3A-C2A-C1A	2.62	106.20	99.98
3	B	360	C2E	C3A-C2A-C1A	2.61	106.18	99.98
3	B	361	C2E	O5'-P1-O3A	2.59	112.05	104.68
3	A	361	C2E	C3A-C2A-C1A	2.54	106.01	99.98
3	A	360	C2E	C3A-C2A-C1A	2.48	105.86	99.98
3	A	361	C2E	O5'-P1-O3A	2.43	111.62	104.68
3	A	361	C2E	O5A-P11-O3'	2.41	111.54	104.68
3	B	360	C2E	C61-N11-C21	2.37	123.66	119.51
3	A	360	C2E	O5'-P1-O3A	2.37	111.44	104.68
3	A	360	C2E	C61-N11-C21	2.36	123.64	119.51
3	A	360	C2E	O4'-C1'-C2'	-2.32	103.22	106.77
3	B	361	C2E	O5A-P11-O3'	2.31	111.26	104.68
3	B	361	C2E	C61-N11-C21	2.28	123.50	119.51
3	A	361	C2E	C61-N11-C21	2.20	123.36	119.51
3	B	361	C2E	O4'-C1'-C2'	-2.15	103.47	106.77
3	A	361	C2E	O4'-C1'-C2'	-2.11	103.54	106.77
3	B	360	C2E	O5'-P1-O3A	2.08	110.62	104.68

There are no chirality outliers.

There are no torsion outliers.

There are no ring outliers.

## 5.7 Other polymers ⓘ

There are no such residues in this entry.

## 5.8 Polymer linkage issues

There are no chain breaks in this entry.

## 6 Fit of model and data ⓘ

### 6.1 Protein, DNA and RNA chains ⓘ

In the following table, the column labelled ‘#RSRZ> 2’ contains the number (and percentage) of RSRZ outliers, followed by percent RSRZ outliers for the chain as percentile scores relative to all X-ray entries and entries of similar resolution. The OWAB column contains the minimum, median, 95<sup>th</sup> percentile and maximum values of the occupancy-weighted average B-factor per residue. The column labelled ‘Q< 0.9’ lists the number of (and percentage) of residues with an average occupancy less than 0.9.

Mol	Chain	Analysed	<RSRZ>	#RSRZ>2	OWAB(Å <sup>2</sup> )	Q<0.9
1	A	322/358 (89%)	0.30	7 (2%) 59 57	41, 66, 94, 107	0
1	B	328/358 (91%)	0.33	12 (3%) 39 38	42, 64, 102, 112	0
All	All	650/716 (90%)	0.31	19 (2%) 49 47	41, 65, 98, 112	0

All (19) RSRZ outliers are listed below:

Mol	Chain	Res	Type	RSRZ
1	B	340	PRO	6.4
1	B	106	THR	3.5
1	B	339	GLN	3.4
1	B	220	PHE	3.2
1	A	43	GLY	3.2
1	B	30	ILE	3.1
1	A	123	LEU	3.0
1	B	309	GLY	3.0
1	B	15	LEU	3.0
1	B	308	GLY	2.9
1	A	308	GLY	2.9
1	A	46	PHE	2.7
1	A	324	TYR	2.4
1	B	102	LYS	2.4
1	A	42	ALA	2.3
1	A	294	LEU	2.2
1	B	46	PHE	2.2
1	B	29	MET	2.1
1	B	222	HIS	2.0

### 6.2 Non-standard residues in protein, DNA, RNA chains ⓘ

There are no non-standard protein/DNA/RNA residues in this entry.

### 6.3 Carbohydrates

There are no carbohydrates in this entry.

### 6.4 Ligands

In the following table, the Atoms column lists the number of modelled atoms in the group and the number defined in the chemical component dictionary. LLDF column lists the quality of electron density of the group with respect to its neighbouring residues in protein, DNA or RNA chains. The B-factors column lists the minimum, median, 95<sup>th</sup> percentile and maximum values of B factors of atoms in the group. The column labelled 'Q< 0.9' lists the number of atoms with occupancy less than 0.9.

Mol	Type	Chain	Res	Atoms	RSR	LLDF	B-factors(Å <sup>2</sup> )	Q<0.9
2	MG	A	359	1/1	0.20	1.11	76,76,76,76	0
2	MG	B	359	1/1	0.15	-0.31	71,71,71,71	0
3	C2E	B	360	46/46	0.11	-0.44	50,63,66,67	0
3	C2E	A	361	46/46	0.13	-0.62	40,50,53,54	0
3	C2E	B	361	46/46	0.13	-0.67	52,59,66,69	0
3	C2E	A	360	46/46	0.12	-0.81	44,55,60,60	0

### 6.5 Other polymers

There are no such residues in this entry.