



Full wwPDB X-ray Structure Validation Report

Feb 28, 2014 – 07:10 AM GMT

PDB ID : 2BS3
Title : GLU C180 -> GLN VARIANT QUINOL:FUMARATE REDUCTASE FROM
WOLINELLA SUCCINOGENES
Authors : Lancaster, C.R.D.
Deposited on : 2005-05-14
Resolution : 2.19 Å(reported)

This is a full wwPDB validation report for a publicly released PDB entry.
We welcome your comments at validation@mail.wwpdb.org
A user guide is available at <http://wwpdb.org/ValidationPDFNotes.html>

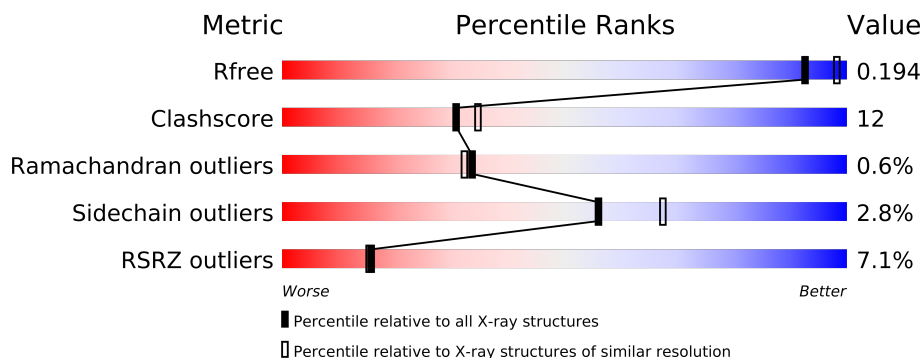
The following versions of software and data (see [references](#)) were used in the production of this report:

MolProbity : 4.02b-467
Mogul : 1.15 2013
Xtriage (Phenix) : dev-1323
EDS : stable22639
Percentile statistics : 21963
Refmac : 5.8.0049
CCP4 : 6.3.0 (Settle)
Ideal geometry (proteins) : Engh & Huber (2001)
Ideal geometry (DNA, RNA) : Parkinson et. al. (1996)
Validation Pipeline (wwPDB-VP) : stable22683

1 Overall quality at a glance

The reported resolution of this entry is 2.19 Å.

Percentile scores (ranging between 0-100) for global validation metrics of the entry are shown in the following graphic. The table shows the number of entries on which the scores are based.



Metric	Whole archive (#Entries)	Similar resolution (#Entries, resolution range(Å))
R_{free}	66092	2938 (2.20-2.20)
Clashscore	79885	3751 (2.20-2.20)
Ramachandran outliers	78287	3681 (2.20-2.20)
Sidechain outliers	78261	3682 (2.20-2.20)
RSRZ outliers	66119	2939 (2.20-2.20)

The table below summarises the geometric issues observed across the polymeric chains and their fit to the electron density. The red, orange, yellow and green segments on the lower bar indicate the fraction of residues that contain outliers for ≥ 3 , 2, 1 and 0 types of geometric quality criteria. The upper red bar (where present) indicates the fraction of residues that have poor fit to the electron density.

Mol	Chain	Length	Quality of chain
1	A	656	
1	D	656	
2	B	239	
2	E	239	
3	C	256	
3	F	256	

The following table lists non-polymeric compounds that are outliers for geometric or electron-density-fit criteria:

Mol	Type	Chain	Res	Geometry	Electron density
11	LMT	C	1257	-	X
11	LMT	F	1257	-	X

Continued on next page...

Continued from previous page...

Mol	Type	Chain	Res	Geometry	Electron density
5	CIT	A	1657[A]	-	X
5	CIT	A	1657[B]	-	X
5	CIT	D	1657[A]	-	X
5	CIT	D	1657[B]	-	X

2 Entry composition

There are 12 unique types of molecules in this entry. The entry contains 19737 atoms, of which 0 are hydrogen and 0 are deuterium.

In the tables below, the ZeroOcc column contains the number of atoms modelled with zero occupancy, the AltConf column contains the number of residues with at least one atom in alternate conformation and the Trace column contains the number of residues modelled with at most 2 atoms.

- Molecule 1 is a protein called QUINOL-FUMARATE REDUCTASE FLAVOPROTEIN SUBUNIT A.

Mol	Chain	Residues	Atoms					ZeroOcc	AltConf	Trace
1	A	656	Total	C	N	O	S	27	5	1
			5145	3219	927	967	32			
1	D	656	Total	C	N	O	S	38	3	1
			5125	3207	921	965	32			

- Molecule 2 is a protein called QUINOL-FUMARATE REDUCTASE IRON-SULFUR SUBUNIT B.

Mol	Chain	Residues	Atoms					ZeroOcc	AltConf	Trace
2	B	239	Total	C	N	O	S	6	2	0
			1908	1202	324	358	24			
2	E	239	Total	C	N	O	S	6	2	0
			1908	1202	324	358	24			

- Molecule 3 is a protein called QUINOL-FUMARATE REDUCTASE DIHEME CYTOCHROME B SUBUNIT C.

Mol	Chain	Residues	Atoms					ZeroOcc	AltConf	Trace
3	C	255	Total	C	N	O	S	16	3	1
			2110	1407	339	350	14			
3	F	255	Total	C	N	O	S	6	3	1
			2110	1407	339	350	14			

There are 2 discrepancies between the modelled and reference sequences:

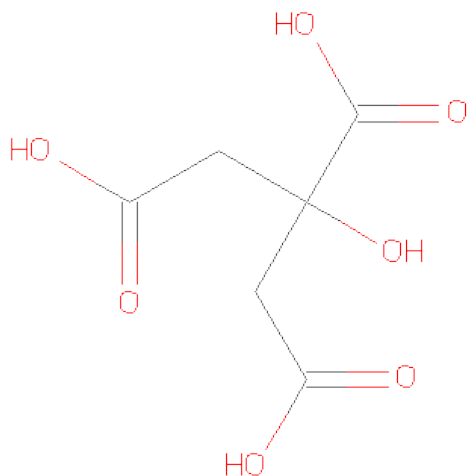
Chain	Residue	Modelled	Actual	Comment	Reference
C	180	GLN	GLU	CONFLICT SEE REMARK 9	UNP P17413
F	180	GLN	GLU	CONFLICT SEE REMARK 9	UNP P17413

- Molecule 4 is FLAVIN-ADENINE DINUCLEOTIDE (three-letter code: FAD) (formula: $C_{27}H_{33}N_9O_{15}P_2$).



Mol	Chain	Residues	Atoms					ZeroOcc	AltConf
4	A	1	Total	C	N	O	P	0	0
			53	27	9	15	2		
4	D	1	Total	C	N	O	P	0	0
			53	27	9	15	2		

- Molecule 5 is CITRIC ACID (three-letter code: CIT) (formula: $C_6H_8O_7$).

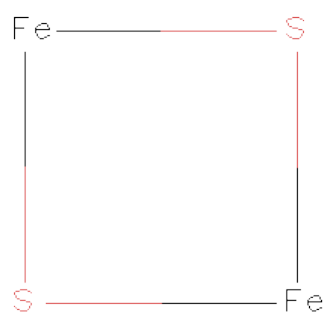


Mol	Chain	Residues	Atoms			ZeroOcc	AltConf
5	A	1	Total	C	O	0	1
			26	12	14		
5	D	1	Total	C	O	0	1
			26	12	14		

- Molecule 6 is SODIUM ION (three-letter code: NA) (formula: Na).

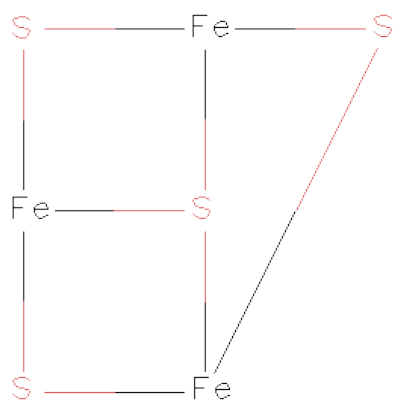
Mol	Chain	Residues	Atoms		ZeroOcc	AltConf
6	A	1	Total	Na	0	0
			1	1		
6	D	1	Total	Na	0	0
			1	1		

- Molecule 7 is FE2/S2 (INORGANIC) CLUSTER (three-letter code: FES) (formula: Fe₂S₂).



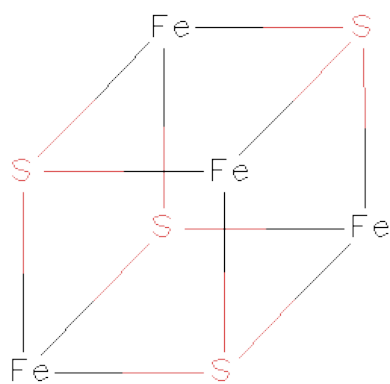
Mol	Chain	Residues	Atoms			ZeroOcc	AltConf
7	B	1	Total	Fe	S	0	0
			4	2	2		
7	E	1	Total	Fe	S	0	0
			4	2	2		

- Molecule 8 is FE3-S4 CLUSTER (three-letter code: F3S) (formula: Fe₃S₄).



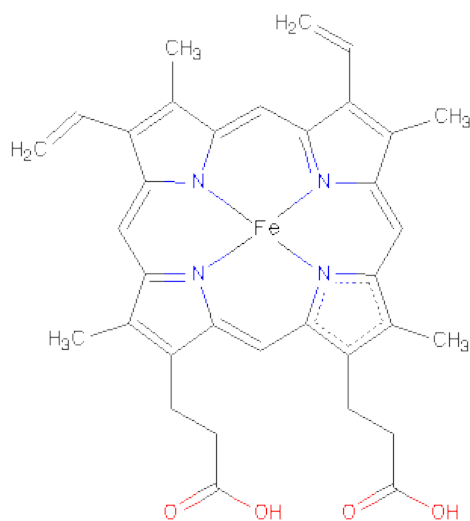
Mol	Chain	Residues	Atoms			ZeroOcc	AltConf
8	B	1	Total	Fe	S	0	0
			7	3	4		
8	E	1	Total	Fe	S	0	0
			7	3	4		

- Molecule 9 is IRON/SULFUR CLUSTER (three-letter code: SF4) (formula: Fe_4S_4).



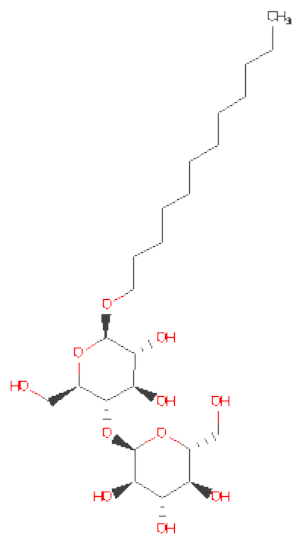
Mol	Chain	Residues	Atoms			ZeroOcc	AltConf
9	B	1	Total	Fe	S	0	0
			8	4	4		
9	E	1	Total	Fe	S	0	0
			8	4	4		

- Molecule 10 is PROTOPORPHYRIN IX CONTAINING FE (three-letter code: HEM) (formula: $C_{34}H_{32}FeN_4O_4$).



Mol	Chain	Residues	Atoms					ZeroOcc	AltConf
10	C	1	Total	C	Fe	N	O	0	0
			43	34	1	4	4		
10	C	1	Total	C	Fe	N	O	0	0
			43	34	1	4	4		
10	F	1	Total	C	Fe	N	O	0	0
			43	34	1	4	4		
10	F	1	Total	C	Fe	N	O	0	0
			43	34	1	4	4		

- Molecule 11 is DODECYL-BETA-D-MALTOSIDE (three-letter code: LMT) (formula: $C_{24}H_{46}O_{11}$).



Mol	Chain	Residues	Atoms			ZeroOcc	AltConf
11	C	1	Total	C	O	16	0
			35	24	11		
11	F	1	Total	C	O	16	0
			35	24	11		

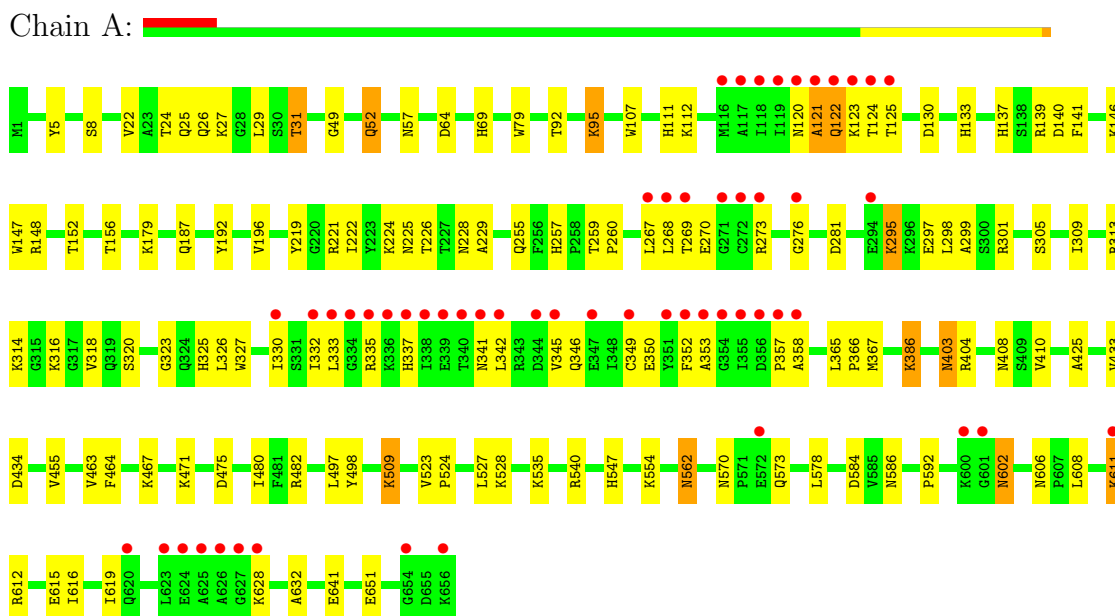
- Molecule 12 is water.

Mol	Chain	Residues	Atoms		ZeroOcc	AltConf
12	A	274	Total	O	0	0
			274	274		
12	B	156	Total	O	1	0
			156	156		
12	C	47	Total	O	0	0
			47	47		
12	D	291	Total	O	3	0
			291	291		
12	E	164	Total	O	1	0
			164	164		
12	F	59	Total	O	0	0
			59	59		

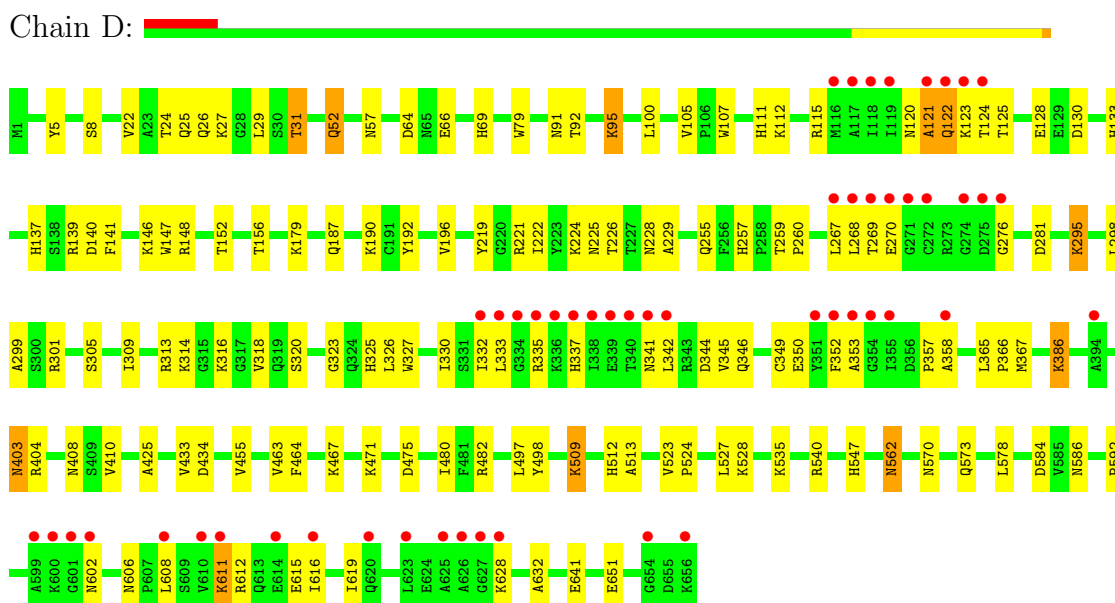
3 Residue-property plots

These plots are drawn for all protein, RNA and DNA chains in the entry. The first graphic for a chain summarises the proportions of errors displayed in the second graphic. The second graphic shows the sequence view annotated by issues in geometry and electron density. Residues are color-coded according to the number of geometric quality criteria for which they contain at least one outlier: green = 0, yellow = 1, orange = 2 and red = 3 or more. A red dot above a residue indicates a poor fit to the electron density ($RSRZ > 2$). Stretches of 2 or more consecutive residues without any outlier are shown as a green connector. Residues present in the sample, but not in the model, are shown in grey.

• Molecule 1: QUINOL-FUMARATE REDUCTASE FLAVOPROTEIN SUBUNIT A

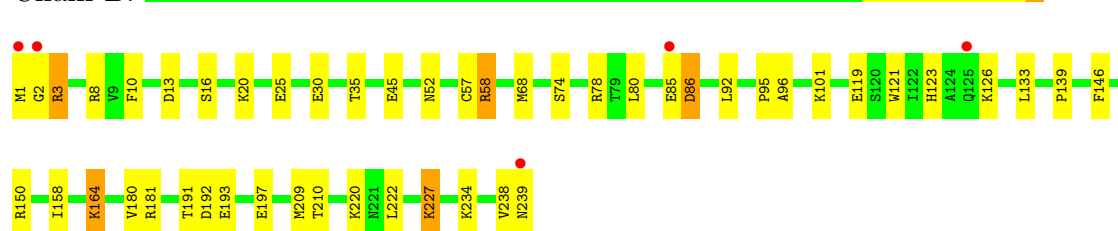


• Molecule 1: QUINOL-FUMARATE REDUCTASE FLAVOPROTEIN SUBUNIT A



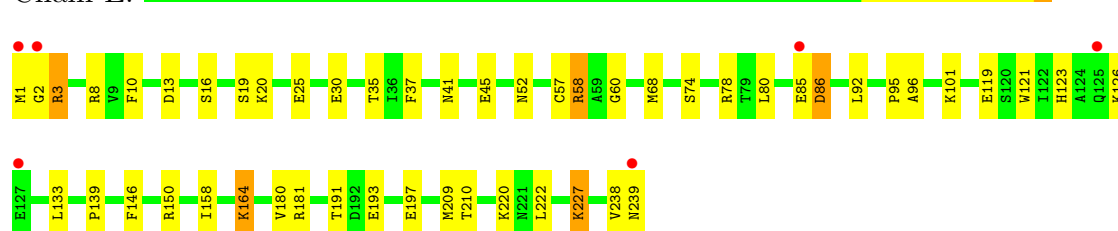
• Molecule 2: QUINOL-FUMARATE REDUCTASE IRON-SULFUR SUBUNIT B

Chain B:



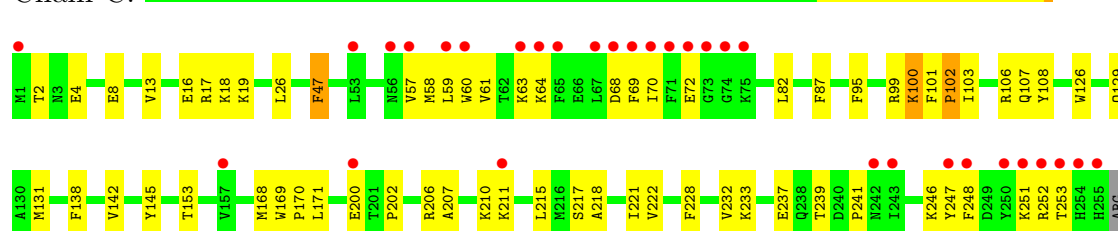
• Molecule 2: QUINOL-FUMARATE REDUCTASE IRON-SULFUR SUBUNIT B

Chain E:



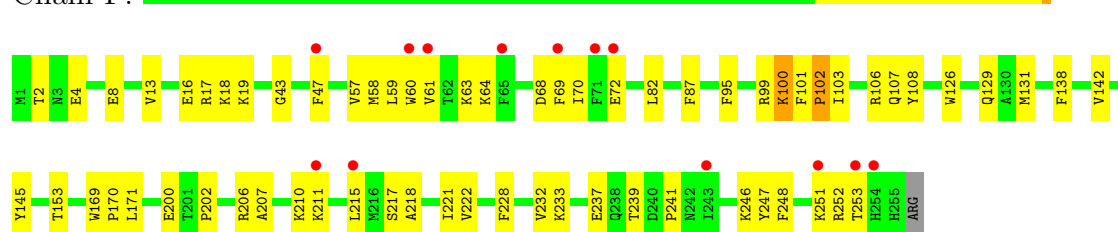
• Molecule 3: QUINOL-FUMARATE REDUCTASE DIHEME CYTOCHROME B SUBUNIT C

Chain C:



• Molecule 3: QUINOL-FUMARATE REDUCTASE DIHEME CYTOCHROME B SUBUNIT C

Chain F:



4 Data and refinement statistics

Property	Value	Source
Space group	P 1 21 1	Depositor
Cell constants a, b, c, α , β , γ	85.10Å 188.77Å 117.82Å 90.00° 104.47° 90.00°	Depositor
Resolution (Å)	38.58 – 2.19 48.59 – 2.19	Depositor EDS
% Data completeness (in resolution range)	99.0 (38.58-2.19) 99.1 (48.59-2.19)	Depositor EDS
R_{merge}	0.09	Depositor
R_{sym}	(Not available)	Depositor
$\langle I/\sigma(I) \rangle$ ¹	7.89 (at 2.20Å)	Xtriage
Refinement program	CNS 1.1	Depositor
R, R_{free}	0.183 , 0.198 0.180 , 0.194	Depositor DCC
R_{free} test set	1000 reflections (0.55%)	DCC
Wilson B-factor (Å ²)	25.8	Xtriage
Anisotropy	0.194	Xtriage
Bulk solvent k_{sol} (e/Å ³), B_{sol} (Å ²)	0.33 , 45.2	EDS
Estimated twinning fraction	No twinning to report.	Xtriage
L-test for twinning	$\langle L \rangle = 0.49$, $\langle L^2 \rangle = 0.32$	Xtriage
Outliers	0 of 182199 reflections	Xtriage
F_o, F_c correlation	0.95	EDS
Total number of atoms	19737	wwPDB-VP
Average B, all atoms (Å ²)	33.0	wwPDB-VP

Xtriage's analysis on translational NCS is as follows: *The largest off-origin peak in the Patterson function is 3.65% of the height of the origin peak. No significant pseudotranslation is detected.*

¹Intensities estimated from amplitudes.

5 Model quality ⓘ

5.1 Standard geometry ⓘ

Bond lengths and bond angles in the following residue types are not validated in this section: NA, SF4, LMT, F3S, FES, CIT, HEM, FAD

The Z score for a bond length (or angle) is the number of standard deviations the observed value is removed from the expected value. A bond length (or angle) with $|Z| > 5$ is considered an outlier worth inspection. RMSZ is the root-mean-square of all Z scores of the bond lengths (or angles).

Mol	Chain	Bond lengths		Bond angles	
		RMSZ	$\# Z > 5$	RMSZ	$\# Z > 5$
1	A	0.30	0/5241	0.59	0/7063
1	D	0.30	0/5221	0.59	0/7038
2	B	0.32	0/1945	0.57	0/2622
2	E	0.32	0/1945	0.57	0/2622
3	C	0.33	0/2177	0.62	5/2946 (0.2%)
3	F	0.32	0/2177	0.49	1/2946 (0.0%)
All	All	0.31	0/18706	0.58	6/25237 (0.0%)

There are no bond length outliers.

All (6) bond angle outliers are listed below:

Mol	Chain	Res	Type	Atoms	Z	Observed(°)	Ideal(°)
3	C	47[A]	PHE	CB-CG-CD2	-10.33	113.57	120.80
3	C	47[B]	PHE	CB-CG-CD2	-10.33	113.57	120.80
3	C	47[A]	PHE	CB-CG-CD1	9.85	127.70	120.80
3	C	47[B]	PHE	CB-CG-CD1	9.85	127.70	120.80
3	C	102	PRO	N-CA-C	-5.87	96.84	112.10
3	F	102	PRO	N-CA-C	-5.82	96.98	112.10

There are no chirality outliers.

There are no planarity outliers.

5.2 Close contacts ⓘ

In the following table, the Non-H and H(model) columns list the number of non-hydrogen atoms and hydrogen atoms in the chain respectively. The H(added) column lists the number of hydrogens added by MolProbity. The Clashes column lists the number of clashes within the asymmetric unit, and the number in parentheses is this value normalized per 1000 atoms of the molecule in the

chain. The Symm-Clashes column gives symmetry related clashes, in the same way as for the Clashes column.

Mol	Chain	Non-H	H(model)	H(added)	Clashes	Symm-Clashes
1	A	5145	0	5124	139	0
1	D	5125	0	5100	132	0
2	B	1908	0	1873	40	0
2	E	1908	0	1873	44	0
3	C	2110	0	2123	52	0
3	F	2110	0	2123	49	0
4	A	53	0	29	3	0
4	D	53	0	29	4	0
5	A	26	0	10	11	0
5	D	26	0	10	11	0
6	A	1	0	0	0	0
6	D	1	0	0	0	0
7	B	4	0	0	0	0
7	E	4	0	0	1	0
8	B	7	0	0	0	0
8	E	7	0	0	0	0
9	B	8	0	0	0	0
9	E	8	0	0	0	0
10	C	86	0	60	0	0
10	F	86	0	60	0	0
11	C	35	0	46	7	0
11	F	35	0	46	9	0
12	A	274	0	0	2	0
12	B	156	0	0	1	0
12	C	47	0	0	1	0
12	D	291	0	0	4	0
12	E	164	0	0	1	0
12	F	59	0	0	0	0
All	All	19737	0	18506	434	0

Clashscore is defined as the number of clashes calculated for the entry per 1000 atoms (including hydrogens) of the entry. The overall clashscore for this entry is 12.

All (434) close contacts within the same asymmetric unit are listed below.

Atom-1	Atom-2	Distance(Å)	Clash(Å)
1:A:273[B]:ARG:HE	1:A:301:ARG:HH21	1.07	0.91
3:F:131:MET:HG2	11:F:1257:LMT:H123	1.53	0.90
3:C:131:MET:HG2	11:C:1257:LMT:H123	1.52	0.89
1:D:120:ASN:HB3	1:D:298:LEU:HD13	1.58	0.86
1:A:120:ASN:HB3	1:A:298:LEU:HD13	1.57	0.86

Continued on next page...

Continued from previous page...

Atom-1	Atom-2	Distance(Å)	Clash(Å)
1:D:346:GLN:HA	1:D:357:PRO:HG3	1.60	0.84
2:B:238:VAL:O	2:B:239:ASN:HB2	1.76	0.84
2:E:238:VAL:O	2:E:239:ASN:HB2	1.76	0.83
2:B:8:ARG:HG2	2:B:25:GLU:HG2	1.60	0.83
2:E:8:ARG:HG2	2:E:25:GLU:HG2	1.60	0.83
1:A:52:GLN:HG2	1:A:69:HIS:NE2	1.94	0.82
1:A:346:GLN:HA	1:A:357:PRO:HG3	1.60	0.82
1:D:52:GLN:HG2	1:D:69:HIS:NE2	1.93	0.82
3:C:103:ILE:H	3:C:107:GLN:NE2	1.79	0.81
1:A:273[B]:ARG:HE	1:A:301:ARG:NH2	1.78	0.81
3:F:103:ILE:H	3:F:107:GLN:NE2	1.79	0.81
1:A:273[B]:ARG:HH21	1:A:301:ARG:NE	1.79	0.80
1:A:27:LYS:HD2	1:A:425:ALA:HB1	1.62	0.80
1:D:27:LYS:HD2	1:D:425:ALA:HB1	1.62	0.79
2:E:209:MET:SD	3:F:100:LYS:HG3	2.22	0.78
2:B:209:MET:SD	3:C:100:LYS:HG3	2.24	0.78
2:B:1:MET:HG2	2:B:3:ARG:H	1.52	0.75
3:C:206:ARG:O	3:C:210:LYS:HG3	1.87	0.75
2:E:1:MET:HG2	2:E:3:ARG:H	1.52	0.75
3:F:206:ARG:O	3:F:210:LYS:HG3	1.86	0.74
1:D:611:LYS:HB3	1:D:611:LYS:NZ	2.04	0.72
1:A:611:LYS:NZ	1:A:611:LYS:HB3	2.05	0.70
1:A:482:ARG:HH11	1:A:547:HIS:HD2	1.39	0.70
1:A:342:LEU:HB3	1:A:345:VAL:HG12	1.73	0.70
1:A:330:ILE:HD11	1:A:357:PRO:HB2	1.73	0.70
1:D:342:LEU:HB3	1:D:345:VAL:HG12	1.73	0.70
1:A:535:LYS:HG3	1:A:578:LEU:HD11	1.72	0.69
1:D:330:ILE:HD11	1:D:357:PRO:HB2	1.73	0.69
1:A:179:LYS:HG3	1:A:196:VAL:CG1	2.22	0.69
1:D:64:ASP:HB2	1:D:146:LYS:HG2	1.73	0.69
1:D:482:ARG:HH11	1:D:547:HIS:HD2	1.40	0.69
1:D:628:LYS:HG3	1:D:632:ALA:HB3	1.75	0.69
1:D:112:LYS:H	1:D:133:HIS:HD2	1.41	0.69
1:A:64:ASP:HB2	1:A:146:LYS:HG2	1.73	0.69
4:D:1656:FAD:N5	5:D:1657[B]:CIT:H42	2.06	0.69
2:B:2:GLY:O	2:B:30:GLU:HB3	1.92	0.68
2:E:2:GLY:O	2:E:30:GLU:HB3	1.92	0.68
1:D:179:LYS:HG3	1:D:196:VAL:CG1	2.22	0.68
3:C:131:MET:HG2	11:C:1257:LMT:C12	2.23	0.68
1:A:628:LYS:HG3	1:A:632:ALA:HB3	1.75	0.68
1:D:320:SER:HB3	1:D:323:GLY:O	1.93	0.68
1:A:320:SER:HB3	1:A:323:GLY:O	1.93	0.68

Continued on next page...

Continued from previous page...

Atom-1	Atom-2	Distance(Å)	Clash(Å)
1:A:386:LYS:HG3	12:A:2163:HOH:O	1.93	0.68
1:A:120:ASN:HB3	1:A:298:LEU:CD1	2.24	0.68
1:D:535:LYS:HG3	1:D:578:LEU:HD11	1.74	0.68
2:B:180:VAL:HG11	2:B:227:LYS:HG3	1.77	0.67
3:F:131:MET:HG2	11:F:1257:LMT:C12	2.25	0.67
1:D:120:ASN:HB3	1:D:298:LEU:CD1	2.24	0.67
1:A:112:LYS:H	1:A:133:HIS:HD2	1.42	0.66
1:A:273[A]:ARG:HH21	1:A:301:ARG:HH21	1.42	0.66
3:F:102:PRO:O	11:F:1257:LMT:H62	1.94	0.66
2:E:180:VAL:HG11	2:E:227:LYS:HG3	1.77	0.66
3:C:102:PRO:O	11:C:1257:LMT:H62	1.96	0.66
2:B:68:MET:HB2	2:B:92:LEU:HB2	1.78	0.66
2:E:68:MET:HB2	2:E:92:LEU:HB2	1.77	0.66
3:C:103:ILE:H	3:C:107:GLN:HE21	1.42	0.66
1:D:179:LYS:HG3	1:D:196:VAL:HG11	1.78	0.66
1:A:273[A]:ARG:NH2	1:A:301:ARG:HH21	1.95	0.65
3:C:101:PHE:HB3	11:C:1257:LMT:H71	1.79	0.65
1:D:332:ILE:HD12	1:D:333:LEU:N	2.11	0.65
3:F:103:ILE:H	3:F:107:GLN:HE21	1.43	0.65
1:A:179:LYS:HG3	1:A:196:VAL:HG11	1.77	0.65
1:A:332:ILE:HD12	1:A:333:LEU:N	2.11	0.65
1:A:270:GLU:OE1	1:A:301:ARG:HD2	1.96	0.65
1:A:273[B]:ARG:HH21	1:A:301:ARG:HE	1.43	0.65
1:A:267:LEU:HD23	5:A:1657[B]:CIT:H41	1.80	0.64
1:D:270:GLU:OE1	1:D:301:ARG:HD2	1.97	0.64
1:A:342:LEU:HB3	1:A:345:VAL:CG1	2.27	0.64
1:D:342:LEU:HB3	1:D:345:VAL:CG1	2.28	0.64
2:E:119:GLU:OE1	2:E:123:HIS:HE1	1.81	0.64
1:D:121:ALA:O	1:D:122:GLN:HG3	1.98	0.63
2:B:119:GLU:OE1	2:B:123:HIS:HE1	1.81	0.63
1:A:121:ALA:O	1:A:122:GLN:HG3	1.98	0.63
1:D:25:GLN:OE1	1:D:31:THR:HG23	1.98	0.63
1:D:267:LEU:HD23	5:D:1657[B]:CIT:H41	1.80	0.63
1:A:268:LEU:HD22	1:A:345:VAL:HG23	1.80	0.63
3:F:101:PHE:HB3	11:F:1257:LMT:H71	1.79	0.63
1:D:342:LEU:O	1:D:345:VAL:HG12	1.99	0.63
1:A:25:GLN:OE1	1:A:31:THR:HG23	1.98	0.62
1:D:562:ASN:C	1:D:562:ASN:HD22	2.03	0.62
1:D:295:LYS:HG2	1:D:299:ALA:HA	1.81	0.62
1:A:342:LEU:O	1:A:345:VAL:HG12	1.99	0.62
3:C:16[B]:GLU:HA	2:E:20:LYS:HE3	1.81	0.62
1:D:268:LEU:HD22	1:D:345:VAL:HG23	1.80	0.62

Continued on next page...

Continued from previous page...

Atom-1	Atom-2	Distance(Å)	Clash(Å)
1:A:267:LEU:CD2	5:A:1657[B]:CIT:H41	2.29	0.62
2:B:158:ILE:HG23	2:B:164:LYS:HD3	1.82	0.62
1:A:295:LYS:HG2	1:A:299:ALA:HA	1.81	0.62
3:C:69:PHE:CD1	3:C:70:ILE:HG13	2.35	0.61
1:D:309:ILE:O	1:D:313:ARG:HG3	2.01	0.60
2:E:158:ILE:HG23	2:E:164:LYS:HD3	1.81	0.60
3:F:69:PHE:CD1	3:F:70:ILE:HG13	2.36	0.60
1:A:562:ASN:HD22	1:A:562:ASN:C	2.04	0.60
1:A:341:ASN:C	1:A:342:LEU:HD12	2.22	0.60
1:D:467:LYS:O	1:D:471:LYS:HG3	2.02	0.60
1:A:64:ASP:CB	1:A:146:LYS:HG2	2.32	0.60
1:D:455:VAL:O	1:D:509:LYS:HD2	2.02	0.60
3:C:16[A]:GLU:HA	2:E:20:LYS:HE3	1.84	0.59
1:A:309:ILE:O	1:A:313:ARG:HG3	2.02	0.59
1:D:341:ASN:C	1:D:342:LEU:HD12	2.22	0.59
2:E:57:CYS:O	2:E:58:ARG:HG3	2.01	0.59
1:A:455:VAL:O	1:A:509:LYS:HD2	2.02	0.59
1:D:64:ASP:CB	1:D:146:LYS:HG2	2.32	0.59
1:A:467:LYS:O	1:A:471:LYS:HG3	2.00	0.59
1:D:29:LEU:O	1:D:31:THR:HG22	2.03	0.59
2:E:191:THR:OG1	2:E:193:GLU:HG2	2.03	0.59
1:A:330:ILE:HD11	1:A:357:PRO:CB	2.33	0.58
1:D:270:GLU:HB2	1:D:301:ARG:NH1	2.19	0.58
1:A:257:HIS:CD2	1:A:259:THR:H	2.22	0.58
1:A:221:ARG:HD2	1:A:226:THR:HG21	1.86	0.58
1:D:221:ARG:HD2	1:D:226:THR:HG21	1.85	0.58
1:A:270:GLU:HB2	1:A:301:ARG:NH1	2.18	0.58
1:D:257:HIS:CD2	1:D:259:THR:H	2.21	0.58
1:D:330:ILE:HD11	1:D:357:PRO:CB	2.33	0.58
1:D:267:LEU:CD2	5:D:1657[B]:CIT:H41	2.34	0.58
2:B:191:THR:OG1	2:B:193:GLU:HG2	2.04	0.58
1:A:524:PRO:O	1:A:528:LYS:HG3	2.05	0.57
1:A:122:GLN:O	1:A:124:THR:N	2.38	0.57
1:A:540:ARG:HH22	1:A:562:ASN:HD22	1.52	0.57
1:A:27:LYS:HD2	1:A:425:ALA:CB	2.33	0.57
1:D:122:GLN:O	1:D:124:THR:N	2.37	0.57
2:E:13:ASP:HA	2:E:101:LYS:HG3	1.86	0.57
1:A:29:LEU:O	1:A:31:THR:HG22	2.04	0.57
1:A:141:PHE:HZ	5:A:1657[B]:CIT:O7	1.86	0.56
1:A:498:TYR:HA	1:A:527:LEU:HD13	1.87	0.56
1:D:498:TYR:HA	1:D:527:LEU:HD13	1.87	0.56
3:F:59:LEU:HD22	3:F:252:ARG:NH1	2.21	0.56

Continued on next page...

Continued from previous page...

Atom-1	Atom-2	Distance(Å)	Clash(Å)
1:A:255:GLN:HE21	1:A:403:ASN:ND2	2.03	0.56
1:D:540:ARG:HH22	1:D:562:ASN:HD22	1.53	0.56
1:D:524:PRO:O	1:D:528:LYS:HG3	2.05	0.56
3:C:217:SER:O	3:C:221:ILE:HG12	2.05	0.56
1:A:276:GLY:HA3	1:A:333:LEU:HD21	1.86	0.56
3:F:217:SER:O	3:F:221:ILE:HG12	2.05	0.56
1:D:276:GLY:HA3	1:D:333:LEU:HD21	1.86	0.56
1:D:255:GLN:HE21	1:D:403:ASN:ND2	2.04	0.56
1:D:540:ARG:HH22	1:D:562:ASN:ND2	2.04	0.56
3:C:168:MET:HE2	12:C:2036:HOH:O	2.05	0.55
3:C:59:LEU:HD22	3:C:252:ARG:NH1	2.21	0.55
4:A:1656:FAD:N5	5:A:1657[B]:CIT:H42	2.22	0.55
2:B:57:CYS:O	2:B:58:ARG:HG3	2.06	0.55
1:D:352:PHE:CZ	2:E:78:ARG:HG3	2.42	0.55
2:B:13:ASP:HA	2:B:101:LYS:HG3	1.87	0.55
1:D:27:LYS:HD2	1:D:425:ALA:CB	2.34	0.55
2:E:52:ASN:OD1	2:E:101:LYS:HE3	2.07	0.55
1:D:141:PHE:CZ	5:D:1657[B]:CIT:O7	2.60	0.55
2:B:52:ASN:OD1	2:B:101:LYS:HE3	2.06	0.55
3:C:95:PHE:HE1	11:F:1257:LMT:H101	1.73	0.54
1:D:141:PHE:HZ	5:D:1657[B]:CIT:O7	1.90	0.54
1:A:651:GLU:OE2	2:B:133:LEU:HD23	2.08	0.54
1:A:540:ARG:HH22	1:A:562:ASN:ND2	2.04	0.54
1:A:651:GLU:HG2	2:B:133:LEU:CD2	2.37	0.54
1:D:570:ASN:O	1:D:573:GLN:HG2	2.07	0.54
1:D:221:ARG:HD3	1:D:229:ALA:O	2.08	0.54
2:E:197:GLU:O	3:F:19:LYS:HD2	2.08	0.54
3:C:248:PHE:HE2	3:C:252:ARG:HH21	1.55	0.54
2:B:197:GLU:O	3:C:19:LYS:HD2	2.08	0.54
2:B:121:TRP:O	2:B:123:HIS:HD2	1.91	0.54
1:A:273[A]:ARG:NH2	1:A:301:ARG:HE	2.05	0.54
1:A:260:PRO:HD2	1:A:365:LEU:O	2.07	0.54
1:A:224:LYS:HB3	1:A:475:ASP:OD2	2.08	0.54
1:D:257:HIS:HE1	5:D:1657[B]:CIT:O6	1.91	0.53
1:A:352:PHE:CZ	2:B:78:ARG:HG3	2.42	0.53
1:D:651:GLU:OE2	2:E:133:LEU:HD23	2.07	0.53
3:F:63:LYS:HE2	3:F:68:ASP:OD2	2.07	0.53
1:D:651:GLU:HG2	2:E:133:LEU:CD2	2.38	0.53
1:A:570:ASN:O	1:A:573:GLN:HG2	2.07	0.53
2:E:121:TRP:O	2:E:123:HIS:HD2	1.91	0.53
3:F:248:PHE:HE2	3:F:252:ARG:HH21	1.55	0.53
1:D:224:LYS:HB3	1:D:475:ASP:OD2	2.08	0.53

Continued on next page...

Continued from previous page...

Atom-1	Atom-2	Distance(Å)	Clash(Å)
1:D:260:PRO:HD2	1:D:365:LEU:O	2.08	0.53
3:C:63:LYS:HE2	3:C:68:ASP:OD2	2.08	0.53
1:A:221:ARG:HD3	1:A:229:ALA:O	2.09	0.53
2:B:85:GLU:O	2:B:86:ASP:HB2	2.09	0.53
3:C:4:GLU:H	3:C:4:GLU:CD	2.11	0.53
3:F:4:GLU:CD	3:F:4:GLU:H	2.11	0.52
1:A:228:ASN:HD22	1:A:228:ASN:N	2.07	0.52
1:A:141:PHE:CZ	5:A:1657[B]:CIT:O7	2.58	0.52
2:E:197:GLU:OE1	3:F:19:LYS:HG3	2.10	0.52
1:D:190:LYS:HE3	12:D:2102:HOH:O	2.09	0.52
2:B:20:LYS:HE3	3:F:16[B]:GLU:HA	1.91	0.52
1:D:57:ASN:HB2	12:D:2028:HOH:O	2.09	0.52
2:B:197:GLU:OE1	3:C:19:LYS:HG3	2.10	0.52
1:A:335:ARG:NH1	1:A:358:ALA:HB3	2.25	0.52
2:E:85:GLU:O	2:E:86:ASP:HB2	2.09	0.52
3:C:99:ARG:HG2	11:F:1257:LMT:H32	1.92	0.51
1:A:120:ASN:CB	1:A:298:LEU:HD13	2.35	0.51
3:F:69:PHE:HD1	3:F:70:ILE:HG13	1.75	0.51
1:D:335:ARG:NH1	1:D:358:ALA:HB3	2.25	0.51
1:D:115[A]:ARG:NH2	1:D:128:GLU:OE2	2.44	0.51
1:A:281:ASP:HB2	1:A:316:LYS:HG3	1.92	0.51
3:C:60:TRP:CZ2	3:C:64:LYS:HD2	2.46	0.51
1:D:228:ASN:N	1:D:228:ASN:HD22	2.09	0.51
3:F:60:TRP:CZ2	3:F:64:LYS:HD2	2.45	0.51
1:D:611:LYS:HB3	1:D:611:LYS:HZ3	1.74	0.51
1:D:281:ASP:HB2	1:D:316:LYS:HG3	1.91	0.51
1:A:64:ASP:HB2	1:A:146:LYS:CG	2.41	0.50
3:C:69:PHE:HD1	3:C:70:ILE:HG13	1.75	0.50
2:E:35:THR:HG22	2:E:80:LEU:HD23	1.94	0.50
1:D:64:ASP:HB2	1:D:146:LYS:CG	2.41	0.50
1:A:140:ASP:HB2	1:A:147:TRP:CE2	2.47	0.50
2:E:126:LYS:HG2	12:E:2093:HOH:O	2.11	0.50
1:A:124:THR:OG1	1:A:125:THR:N	2.43	0.49
3:F:60:TRP:O	3:F:64:LYS:HG3	2.11	0.49
2:E:180:VAL:HG11	2:E:227:LYS:CG	2.42	0.49
1:D:52:GLN:HG3	1:D:148:ARG:HD2	1.94	0.49
2:B:180:VAL:HG11	2:B:227:LYS:CG	2.42	0.49
3:C:17:ARG:NH1	2:E:16:SER:O	2.46	0.49
1:A:49:GLY:HA2	1:A:139[A]:ARG:NH2	2.28	0.49
1:A:273[A]:ARG:HH11	1:A:273[A]:ARG:HB3	1.78	0.49
2:E:8:ARG:HG2	2:E:25:GLU:CG	2.38	0.49
1:A:332:ILE:HD12	1:A:333:LEU:HG	1.94	0.49

Continued on next page...

Continued from previous page...

Atom-1	Atom-2	Distance(Å)	Clash(Å)
1:D:124:THR:OG1	1:D:125:THR:N	2.43	0.49
3:C:233:LYS:O	3:C:237:GLU:HG3	2.12	0.49
1:A:57:ASN:HB2	12:A:2020:HOH:O	2.12	0.49
2:B:20:LYS:HE3	3:F:16[A]:GLU:HA	1.94	0.49
3:C:60:TRP:O	3:C:64:LYS:HG3	2.12	0.49
3:C:169:TRP:N	3:C:170:PRO:HD2	2.28	0.49
3:F:233:LYS:O	3:F:237:GLU:HG3	2.11	0.49
1:D:332:ILE:HD12	1:D:333:LEU:HG	1.94	0.49
1:D:259:THR:N	1:D:260:PRO:HD3	2.28	0.49
3:C:153:THR:HG21	3:C:246:LYS:HD2	1.94	0.49
2:B:126:LYS:HG2	12:B:2082:HOH:O	2.13	0.49
2:B:95:PRO:O	2:B:96:ALA:HB3	2.13	0.49
1:D:140:ASP:HB2	1:D:147:TRP:CE2	2.48	0.48
1:A:52:GLN:HG3	1:A:148:ARG:HD2	1.95	0.48
1:D:333:LEU:HB3	1:D:337:HIS:HD2	1.79	0.48
1:D:120:ASN:CB	1:D:298:LEU:HD13	2.36	0.48
3:F:153:THR:HG21	3:F:246:LYS:HD2	1.95	0.48
1:D:349:CYS:O	1:D:353:ALA:HB3	2.13	0.48
1:D:257:HIS:HD2	1:D:259:THR:H	1.61	0.48
2:E:10:PHE:HB2	2:E:92:LEU:HD23	1.96	0.48
1:A:349:CYS:O	1:A:353:ALA:HB3	2.14	0.48
3:F:207:ALA:O	3:F:211:LYS:HG3	2.13	0.48
2:E:95:PRO:O	2:E:96:ALA:HB3	2.14	0.48
1:A:92:THR:O	1:A:95:LYS:HG3	2.14	0.48
3:C:63:LYS:O	3:C:68:ASP:HB2	2.14	0.48
3:F:43:GLY:O	3:F:47[A]:PHE:HD1	1.97	0.48
3:C:2:THR:OG1	3:C:4:GLU:HG2	2.14	0.47
1:A:112:LYS:HD3	1:A:130:ASP:HB3	1.96	0.47
2:B:35:THR:HG22	2:B:80:LEU:HD23	1.95	0.47
1:A:259:THR:N	1:A:260:PRO:HD3	2.29	0.47
1:A:584:ASP:OD1	1:A:586:ASN:HB2	2.14	0.47
3:C:207:ALA:O	3:C:211:LYS:HG3	2.14	0.47
1:A:333:LEU:HB3	1:A:337:HIS:HD2	1.78	0.47
1:D:464:PHE:CD1	2:E:45:GLU:HG2	2.50	0.47
1:D:52:GLN:HG2	1:D:69:HIS:CE1	2.47	0.47
2:B:10:PHE:HB2	2:B:92:LEU:HD23	1.96	0.47
4:A:1656:FAD:H1'1	4:A:1656:FAD:H9	1.65	0.47
3:F:63:LYS:O	3:F:68:ASP:HB2	2.15	0.47
3:F:2:THR:OG1	3:F:4:GLU:HG2	2.15	0.47
2:E:220:LYS:HB2	2:E:222:LEU:HD13	1.96	0.47
1:A:273[A]:ARG:NH2	1:A:301:ARG:NH2	2.62	0.47
2:E:210:THR:HG22	2:E:210:THR:O	2.15	0.47

Continued on next page...

Continued from previous page...

Atom-1	Atom-2	Distance(Å)	Clash(Å)
1:A:273[B]:ARG:HH21	1:A:301:ARG:CZ	2.28	0.47
1:D:482:ARG:NH1	1:D:547:HIS:HD2	2.12	0.47
1:A:257:HIS:O	1:A:366:PRO:HA	2.15	0.47
2:E:146:PHE:O	2:E:150:ARG:HG3	2.15	0.47
3:F:171:LEU:HD23	3:F:171:LEU:C	2.36	0.47
3:C:57:VAL:O	3:C:61:VAL:HG23	2.15	0.47
4:D:1656:FAD:H1'1	4:D:1656:FAD:H9	1.64	0.47
3:C:171:LEU:HD23	3:C:171:LEU:C	2.35	0.47
2:B:16:SER:O	3:F:17:ARG:NH1	2.47	0.46
1:A:464:PHE:CD1	2:B:45:GLU:HG2	2.49	0.46
2:B:210:THR:HG22	2:B:210:THR:O	2.15	0.46
3:C:145:TYR:OH	3:F:170:PRO:HG2	2.15	0.46
1:D:141:PHE:HZ	5:D:1657[A]:CIT:O6	1.97	0.46
1:D:92:THR:O	1:D:95:LYS:HG3	2.16	0.46
1:A:52:GLN:HG2	1:A:69:HIS:CE1	2.49	0.46
1:A:111:HIS:HB3	2:B:139:PRO:HG3	1.98	0.46
3:F:169:TRP:N	3:F:170:PRO:HD2	2.30	0.46
1:A:482:ARG:NH1	1:A:547:HIS:HD2	2.11	0.46
1:D:257:HIS:O	1:D:366:PRO:HA	2.15	0.46
1:A:141:PHE:HZ	5:A:1657[B]:CIT:HO7	1.48	0.46
1:A:257:HIS:ND1	5:A:1657[A]:CIT:O7	2.46	0.46
1:A:325:HIS:HD2	1:A:326:LEU:O	1.98	0.46
2:B:8:ARG:HG2	2:B:25:GLU:CG	2.38	0.46
1:D:257:HIS:CE1	5:D:1657[B]:CIT:O6	2.68	0.46
3:C:26:LEU:HD21	11:F:1257:LMT:H5'	1.98	0.46
2:B:220:LYS:HB2	2:B:222:LEU:HD13	1.97	0.46
1:A:611:LYS:HZ2	1:A:611:LYS:HB3	1.79	0.46
1:D:325:HIS:HD2	1:D:326:LEU:O	1.99	0.46
1:A:257:HIS:HD2	1:A:259:THR:H	1.62	0.45
3:F:8:GLU:HA	3:F:13:VAL:O	2.16	0.45
2:B:146:PHE:O	2:B:150:ARG:HG3	2.14	0.45
2:B:52:ASN:CG	2:B:101:LYS:HE3	2.36	0.45
2:E:52:ASN:CG	2:E:101:LYS:HE3	2.37	0.45
1:D:584:ASP:OD1	1:D:586:ASN:HB2	2.14	0.45
3:F:57:VAL:O	3:F:61:VAL:HG23	2.16	0.45
1:D:112:LYS:HD3	1:D:130:ASP:HB3	1.97	0.45
1:D:111:HIS:HB3	2:E:139:PRO:HG3	1.98	0.45
1:D:179:LYS:CG	1:D:196:VAL:HG11	2.45	0.45
2:B:2:GLY:O	2:B:3:ARG:O	2.34	0.45
2:E:158:ILE:CG2	2:E:164:LYS:HD3	2.47	0.45
1:A:273[B]:ARG:NE	1:A:301:ARG:HH21	1.91	0.45
2:B:52:ASN:OD1	2:B:101:LYS:CE	2.65	0.45

Continued on next page...

Continued from previous page...

Atom-1	Atom-2	Distance(Å)	Clash(Å)
11:C:1257:LMT:H101	3:F:95:PHE:HE1	1.82	0.45
1:A:330:ILE:CD1	1:A:357:PRO:HB2	2.46	0.44
3:C:95:PHE:CE1	11:F:1257:LMT:H51	2.53	0.44
1:A:314:LYS:HB3	1:A:314:LYS:NZ	2.32	0.44
1:D:52:GLN:HG3	1:D:148:ARG:CD	2.47	0.44
2:E:2:GLY:O	2:E:3:ARG:O	2.34	0.44
1:D:482:ARG:HH11	1:D:547:HIS:CD2	2.28	0.44
1:D:608:LEU:N	1:D:608:LEU:HD12	2.32	0.44
3:C:8:GLU:HA	3:C:13:VAL:O	2.17	0.44
1:A:611:LYS:HB3	1:A:611:LYS:HZ3	1.79	0.44
1:D:314:LYS:NZ	1:D:314:LYS:HB3	2.32	0.44
1:A:608:LEU:HD12	1:A:608:LEU:N	2.31	0.44
1:A:612:ARG:O	1:A:616:ILE:HG13	2.17	0.44
3:C:170:PRO:HG2	3:F:145:TYR:OH	2.17	0.44
1:A:346:GLN:HG2	1:A:350:GLU:OE2	2.18	0.43
1:A:342:LEU:HD12	1:A:342:LEU:N	2.33	0.43
1:D:187:GLN:HB3	1:D:192:TYR:HE2	1.83	0.43
2:B:158:ILE:CG2	2:B:164:LYS:HD3	2.47	0.43
1:D:455:VAL:HG13	1:D:509:LYS:HG3	2.00	0.43
1:A:52:GLN:HG3	1:A:148:ARG:CD	2.48	0.43
1:A:187:GLN:HB3	1:A:192:TYR:HE2	1.83	0.43
1:D:225:ASN:HB3	1:D:367:MET:HG2	2.00	0.43
1:D:141:PHE:CZ	5:D:1657[B]:CIT:O1	2.71	0.43
1:A:22:VAL:O	1:A:26:GLN:HG2	2.18	0.43
1:A:318:VAL:HG21	1:A:327:TRP:NE1	2.33	0.43
1:D:111:HIS:HA	1:D:133:HIS:CD2	2.53	0.43
1:A:111:HIS:HA	1:A:133:HIS:CD2	2.54	0.43
3:C:247:TYR:O	3:C:251:LYS:HG3	2.19	0.43
1:A:152:THR:OG1	1:A:156:THR:HA	2.19	0.43
1:D:8:SER:HB2	1:D:31:THR:HB	2.00	0.43
11:C:1257:LMT:H32	3:F:99:ARG:HG2	1.99	0.43
1:D:276:GLY:CA	1:D:333:LEU:HD21	2.49	0.43
1:A:24:THR:OG1	1:A:31:THR:HG21	2.19	0.43
1:D:79:TRP:CE2	1:D:592:PRO:HA	2.54	0.43
1:D:606:ASN:OD1	1:D:608:LEU:HD13	2.19	0.43
1:A:5:TYR:CD1	1:A:5:TYR:C	2.92	0.43
1:A:79:TRP:CE2	1:A:592:PRO:HA	2.54	0.43
1:A:463:VAL:HG22	1:A:523:VAL:HG21	2.01	0.43
1:D:318:VAL:HG21	1:D:327:TRP:NE1	2.34	0.43
1:D:346:GLN:HG2	1:D:350:GLU:OE2	2.19	0.42
2:E:1:MET:HG2	2:E:2:GLY:N	2.33	0.42
2:E:52:ASN:OD1	2:E:101:LYS:CE	2.65	0.42

Continued on next page...

Continued from previous page...

Atom-1	Atom-2	Distance(Å)	Clash(Å)
3:F:211:LYS:O	3:F:215:LEU:HD23	2.19	0.42
3:C:211:LYS:O	3:C:215:LEU:HD23	2.19	0.42
1:D:612:ARG:O	1:D:616:ILE:HG13	2.18	0.42
2:B:1:MET:HG2	2:B:2:GLY:N	2.33	0.42
1:A:455:VAL:HG13	1:A:509:LYS:HG3	2.00	0.42
3:F:59:LEU:O	3:F:63:LYS:HG3	2.19	0.42
1:D:344:ASP:HB3	12:D:2159:HOH:O	2.18	0.42
1:A:523:VAL:HB	1:A:524:PRO:HD3	2.02	0.42
3:C:59:LEU:O	3:C:63:LYS:HG3	2.19	0.42
1:A:8:SER:HB2	1:A:31:THR:HB	2.01	0.42
1:D:219:TYR:O	1:D:222:ILE:HG12	2.20	0.42
3:F:200:GLU:C	3:F:202:PRO:HD3	2.39	0.42
1:D:22:VAL:O	1:D:26:GLN:HG2	2.20	0.42
1:A:615:GLU:O	1:A:619:ILE:HG13	2.19	0.42
1:D:342:LEU:HD12	1:D:342:LEU:N	2.33	0.42
1:D:112:LYS:HB3	1:D:112:LYS:HE3	1.91	0.42
1:D:141:PHE:CZ	5:D:1657[A]:CIT:O6	2.71	0.42
3:C:59:LEU:CD2	3:C:252:ARG:HH11	2.32	0.42
1:A:179:LYS:CG	1:A:196:VAL:HG11	2.45	0.42
1:A:107:TRP:HA	1:A:152:THR:HG22	2.02	0.42
1:D:463:VAL:HG22	1:D:523:VAL:HG21	2.02	0.42
1:A:273[A]:ARG:HH21	1:A:301:ARG:NH2	2.15	0.42
3:F:108:TYR:CD1	11:F:1257:LMT:H2'	2.55	0.42
1:D:255:GLN:HE21	1:D:403:ASN:HD22	1.68	0.42
1:A:606:ASN:OD1	1:A:608:LEU:HD13	2.19	0.42
3:F:59:LEU:CD2	3:F:252:ARG:HH11	2.32	0.42
1:D:615:GLU:O	1:D:619:ILE:HG13	2.20	0.42
3:F:253:THR:HG22	3:F:253:THR:O	2.19	0.42
1:D:330:ILE:CD1	1:D:357:PRO:HB2	2.46	0.42
1:A:49:GLY:HA2	1:A:139[A]:ARG:HH21	1.85	0.42
1:D:24:THR:OG1	1:D:31:THR:HG21	2.20	0.42
3:F:247:TYR:O	3:F:251:LYS:HG3	2.19	0.42
1:D:305:SER:HB3	1:D:480:ILE:HD13	2.02	0.42
1:D:268:LEU:HD22	1:D:345:VAL:CG2	2.48	0.42
1:A:49:GLY:N	5:A:1657[B]:CIT:O3	2.53	0.42
1:A:257:HIS:HE1	5:A:1657[B]:CIT:O6	2.03	0.42
3:C:239:THR:O	3:C:241:PRO:HD3	2.20	0.42
1:D:107:TRP:HA	1:D:152:THR:HG22	2.01	0.42
1:D:152:THR:OG1	1:D:156:THR:HA	2.20	0.42
2:E:227:LYS:HA	2:E:227:LYS:HD3	1.88	0.41
1:A:433:VAL:CG1	1:A:434:ASP:N	2.83	0.41
1:A:219:TYR:O	1:A:222:ILE:HG12	2.20	0.41

Continued on next page...

Continued from previous page...

Atom-1	Atom-2	Distance(Å)	Clash(Å)
1:D:52:GLN:CG	1:D:148:ARG:HD2	2.49	0.41
2:E:60:GLY:HA2	7:E:1240:FES:S1	2.60	0.41
1:A:52:GLN:CG	1:A:148:ARG:HD2	2.51	0.41
1:A:112:LYS:HG3	1:A:130:ASP:HA	2.02	0.41
1:A:276:GLY:CA	1:A:333:LEU:HD21	2.50	0.41
3:F:17:ARG:HG2	3:F:17:ARG:O	2.19	0.41
1:D:5:TYR:CD1	1:D:5:TYR:C	2.93	0.41
3:C:200:GLU:C	3:C:202:PRO:HD3	2.40	0.41
2:E:37:PHE:CE1	2:E:41:ASN:ND2	2.88	0.41
3:C:108:TYR:CD1	11:C:1257:LMT:H2'	2.55	0.41
1:D:433:VAL:CG1	1:D:434:ASP:N	2.83	0.41
1:D:112:LYS:HG3	1:D:130:ASP:HA	2.03	0.41
3:C:17:ARG:O	3:C:17:ARG:HG2	2.20	0.41
3:C:253:THR:O	3:C:253:THR:HG22	2.19	0.41
1:A:64:ASP:CG	1:A:146:LYS:HG2	2.41	0.41
1:D:535:LYS:HD3	1:D:535:LYS:O	2.21	0.41
1:A:410:VAL:HG13	4:A:1656:FAD:N1	2.36	0.41
1:A:434:ASP:OD1	1:D:434:ASP:OD1	2.38	0.41
3:F:126:TRP:O	3:F:129:GLN:HB2	2.20	0.41
1:A:554:LYS:HG2	1:A:602:ASN:ND2	2.36	0.41
2:E:193:GLU:CD	2:E:193:GLU:H	2.24	0.41
3:F:218:ALA:O	3:F:222:VAL:HG23	2.21	0.41
3:F:228:PHE:O	3:F:232:VAL:HG23	2.21	0.41
1:A:273[B]:ARG:NH1	1:A:297:GLU:O	2.54	0.41
1:D:410:VAL:HG13	4:D:1656:FAD:N1	2.36	0.41
1:A:333:LEU:HB3	1:A:337:HIS:CD2	2.55	0.41
3:C:138:PHE:O	3:C:142:VAL:HG23	2.21	0.41
1:A:225:ASN:HB3	1:A:367:MET:HG2	2.02	0.41
1:D:386:LYS:HG3	12:D:2170:HOH:O	2.21	0.41
1:D:100:LEU:HB3	1:D:105:VAL:HG21	2.02	0.41
3:C:228:PHE:O	3:C:232:VAL:HG23	2.20	0.41
1:D:64:ASP:CG	1:D:146:LYS:HG2	2.41	0.41
1:D:66:GLU:HG2	1:D:91:ASN:HD22	1.86	0.41
1:D:52:GLN:HG3	1:D:148:ARG:HG3	2.03	0.41
1:A:141:PHE:CZ	5:A:1657[B]:CIT:O1	2.74	0.41
1:D:562:ASN:C	1:D:562:ASN:ND2	2.72	0.41
3:C:17:ARG:HD2	2:E:19:SER:O	2.20	0.41
1:A:305:SER:HB3	1:A:480:ILE:HD13	2.03	0.41
2:B:192:ASP:OD2	2:B:234:LYS:HE2	2.21	0.41
1:A:267:LEU:HD21	5:A:1657[B]:CIT:H41	2.02	0.40
1:A:257:HIS:HD2	1:A:259:THR:N	2.18	0.40
1:D:512:HIS:O	1:D:513:ALA:C	2.60	0.40

Continued on next page...

Continued from previous page...

Atom-1	Atom-2	Distance(Å)	Clash(Å)
3:F:138:PHE:O	3:F:142:VAL:HG23	2.21	0.40
1:D:257:HIS:ND1	5:D:1657[A]:CIT:O7	2.44	0.40
1:D:257:HIS:HD2	1:D:259:THR:N	2.19	0.40
3:C:126:TRP:O	3:C:129:GLN:HB2	2.20	0.40
1:D:410:VAL:HG13	4:D:1656:FAD:C2	2.51	0.40
1:A:52:GLN:HB2	1:A:52:GLN:HE21	1.56	0.40
1:A:112:LYS:HB3	1:A:112:LYS:HE3	1.91	0.40
3:F:239:THR:O	3:F:241:PRO:HD3	2.21	0.40
3:C:218:ALA:O	3:C:222:VAL:HG23	2.20	0.40

There are no symmetry-related clashes.

5.3 Torsion angles

5.3.1 Protein backbone ⓘ

In the following table, the Percentiles column shows the percent Ramachandran outliers of the chain as a percentile score with respect to all X-ray entries followed by that with respect to entries of similar resolution. The Analysed column shows the number of residues for which the backbone conformation was analysed, and the total number of residues.

Mol	Chain	Analysed	Favoured	Allowed	Outliers	Percentiles	
1	A	659/656 (100%)	633 (96%)	22 (3%)	4 (1%)	33	32
1	D	657/656 (100%)	629 (96%)	24 (4%)	4 (1%)	33	32
2	B	239/239 (100%)	230 (96%)	7 (3%)	2 (1%)	27	24
2	E	239/239 (100%)	230 (96%)	7 (3%)	2 (1%)	27	24
3	C	256/256 (100%)	249 (97%)	6 (2%)	1 (0%)	43	45
3	F	256/256 (100%)	249 (97%)	6 (2%)	1 (0%)	43	45
All	All	2306/2302 (100%)	2220 (96%)	72 (3%)	14 (1%)	33	32

All (14) Ramachandran outliers are listed below:

Mol	Chain	Res	Type
1	A	122	GLN
2	B	3	ARG
2	B	86	ASP
3	C	72	GLU
1	D	122	GLN
2	E	3	ARG

Continued on next page...

Continued from previous page...

Mol	Chain	Res	Type
2	E	86	ASP
3	F	72	GLU
1	A	123	LYS
1	A	269	THR
1	D	123	LYS
1	D	269	THR
1	A	121	ALA
1	D	121	ALA

5.3.2 Protein sidechains ⓘ

In the following table, the Percentiles column shows the percent sidechain outliers of the chain as a percentile score with respect to all X-ray entries followed by that with respect to entries of similar resolution. The Analysed column shows the number of residues for which the sidechain conformation was analysed, and the total number of residues.

Mol	Chain	Analysed	Rotameric	Outliers	Percentiles	
1	A	537/533 (101%)	522 (97%)	15 (3%)	56	67
1	D	535/533 (100%)	518 (97%)	17 (3%)	51	62
2	B	213/211 (101%)	208 (98%)	5 (2%)	63	74
2	E	213/211 (101%)	208 (98%)	5 (2%)	63	74
3	C	224/223 (100%)	216 (96%)	8 (4%)	47	56
3	F	224/223 (100%)	218 (97%)	6 (3%)	57	68
All	All	1946/1934 (101%)	1890 (97%)	56 (3%)	56	66

All (56) residues with a non-rotameric sidechain are listed below:

Mol	Chain	Res	Type
1	A	31	THR
1	A	52	GLN
1	A	95	LYS
1	A	137	HIS
1	A	295	LYS
1	A	386	LYS
1	A	403	ASN
1	A	404	ARG
1	A	408	ASN
1	A	497	LEU
1	A	509	LYS

Continued on next page...

Continued from previous page...

Mol	Chain	Res	Type
1	A	562	ASN
1	A	602	ASN
1	A	611	LYS
1	A	641	GLU
2	B	58	ARG
2	B	74	SER
2	B	164	LYS
2	B	181	ARG
2	B	227	LYS
3	C	18	LYS
3	C	47[A]	PHE
3	C	47[B]	PHE
3	C	58	MET
3	C	82	LEU
3	C	87	PHE
3	C	100	LYS
3	C	106	ARG
1	D	31	THR
1	D	52	GLN
1	D	95	LYS
1	D	137	HIS
1	D	139[A]	ARG
1	D	139[B]	ARG
1	D	295	LYS
1	D	386	LYS
1	D	403	ASN
1	D	404	ARG
1	D	408	ASN
1	D	497	LEU
1	D	509	LYS
1	D	562	ASN
1	D	602	ASN
1	D	611	LYS
1	D	641	GLU
2	E	58	ARG
2	E	74	SER
2	E	164	LYS
2	E	181	ARG
2	E	227	LYS
3	F	18	LYS
3	F	58	MET
3	F	82	LEU

Continued on next page...

Continued from previous page...

Mol	Chain	Res	Type
3	F	87	PHE
3	F	100	LYS
3	F	106	ARG

Some sidechains can be flipped to improve hydrogen bonding and reduce clashes. All (38) such sidechains are listed below:

Mol	Chain	Res	Type
1	A	26	GLN
1	A	48	GLN
1	A	57	ASN
1	A	111	HIS
1	A	133	HIS
1	A	225	ASN
1	A	228	ASN
1	A	325	HIS
1	A	403	ASN
1	A	408	ASN
1	A	430	ASN
1	A	468	ASN
1	A	547	HIS
1	A	562	ASN
1	A	586	ASN
1	A	602	ASN
2	B	116	GLN
2	B	123	HIS
3	C	107	GLN
1	D	26	GLN
1	D	48	GLN
1	D	57	ASN
1	D	111	HIS
1	D	133	HIS
1	D	225	ASN
1	D	228	ASN
1	D	325	HIS
1	D	403	ASN
1	D	408	ASN
1	D	430	ASN
1	D	468	ASN
1	D	547	HIS
1	D	562	ASN
1	D	586	ASN
1	D	602	ASN

Continued on next page...

Continued from previous page...

Mol	Chain	Res	Type
2	E	116	GLN
2	E	123	HIS
3	F	107	GLN

5.3.3 RNA ⓘ

There are no RNA chains in this entry.

5.4 Non-standard residues in protein, DNA, RNA chains ⓘ

There are no non-standard protein/DNA/RNA residues in this entry.

5.5 Carbohydrates ⓘ

There are no carbohydrates in this entry.

5.6 Ligand geometry ⓘ

Of 20 ligands modelled in this entry, 2 are monoatomic - leaving 18 for Mogul analysis.

In the following table, the Counts columns list the number of bonds (or angles) for which Mogul statistics could be retrieved, the number of bonds (or angles) that are observed in the model and the number of bonds (or angles) that are defined in the chemical component dictionary. The Link column lists molecule types, if any, to which the group is linked. The Z score for a bond length (or angle) is the number of standard deviations the observed value is removed from the expected value. A bond length (or angle) with $|Z| > 2$ is considered an outlier worth inspection. RMSZ is the root-mean-square of all Z scores of the bond lengths (or angles).

Mol	Type	Chain	Res	Link	Bond lengths			Bond angles		
					Counts	RMSZ	# Z > 2	Counts	RMSZ	# Z > 2
4	FAD	A	1656	1	58,58,58	2.13	13 (22%)	85,89,89	2.01	14 (16%)
5	CIT	A	1657[A]	-	12,12,12	1.21	2 (16%)	17,17,17	1.63	1 (5%)
5	CIT	A	1657[B]	-	12,12,12	1.04	1 (8%)	17,17,17	1.74	1 (5%)
7	FES	B	1240	2	0,4,4	0.00	-	0,4,4	0.00	-
8	F3S	B	1241	2	3,9,9	9.87	1 (33%)	0,15,15	0.00	-
9	SF4	B	1242	2	12,12,12	9.65	10 (83%)	0,24,24	0.00	-
10	HEM	C	1255	3	49,50,50	1.79	13 (26%)	46,82,82	1.32	4 (8%)
10	HEM	C	1256	3	49,50,50	1.82	11 (22%)	46,82,82	1.37	4 (8%)
11	LMT	C	1257	-	36,36,36	1.08	2 (5%)	47,47,47	1.27	4 (8%)

Mol	Type	Chain	Res	Link	Bond lengths			Bond angles		
					Counts	RMSZ	# Z > 2	Counts	RMSZ	# Z > 2
4	FAD	D	1656	1	58,58,58	2.11	12 (20%)	85,89,89	2.04	14 (16%)
5	CIT	D	1657[A]	-	12,12,12	1.24	1 (8%)	17,17,17	1.60	1 (5%)
5	CIT	D	1657[B]	-	12,12,12	1.05	1 (8%)	17,17,17	1.68	1 (5%)
7	FES	E	1240	2	0,4,4	0.00	-	0,4,4	0.00	-
8	F3S	E	1241	2	3,9,9	8.76	2 (66%)	0,15,15	0.00	-
9	SF4	E	1242	2	12,12,12	9.68	9 (75%)	0,24,24	0.00	-
10	HEM	F	1255	3	49,50,50	1.80	12 (24%)	46,82,82	1.33	4 (8%)
10	HEM	F	1256	3	49,50,50	1.77	9 (18%)	46,82,82	1.38	5 (10%)
11	LMT	F	1257	-	36,36,36	1.07	2 (5%)	47,47,47	1.27	4 (8%)

In the following table, the Chirals column lists the number of chiral outliers, the number of chiral centers analysed, the number of these observed in the model and the number defined in the chemical component dictionary. Similar counts are reported in the Torsion and Rings columns. '-' means no outliers of that kind were identified.

Mol	Type	Chain	Res	Link	Chirals	Torsions	Rings
4	FAD	A	1656	1	-	0/34/50/50	0/1/6/6
5	CIT	A	1657[A]	-	-	0/16/16/16	0/0/0/0
5	CIT	A	1657[B]	-	-	0/16/16/16	0/0/0/0
7	FES	B	1240	2	-	0/0/4/4	0/0/1/1
8	F3S	B	1241	2	-	0/0/24/24	0/0/3/3
9	SF4	B	1242	2	-	0/0/48/48	0/0/5/5
10	HEM	C	1255	3	-	0/14/114/114	0/0/8/8
10	HEM	C	1256	3	-	0/14/114/114	0/0/8/8
11	LMT	C	1257	-	-	0/21/61/61	0/2/2/2
4	FAD	D	1656	1	-	0/34/50/50	0/1/6/6
5	CIT	D	1657[A]	-	-	0/16/16/16	0/0/0/0
5	CIT	D	1657[B]	-	-	0/16/16/16	0/0/0/0
7	FES	E	1240	2	-	0/0/4/4	0/0/1/1
8	F3S	E	1241	2	-	0/0/24/24	0/0/3/3
9	SF4	E	1242	2	-	0/0/48/48	0/0/5/5
10	HEM	F	1255	3	-	0/14/114/114	0/0/8/8
10	HEM	F	1256	3	-	0/14/114/114	0/0/8/8
11	LMT	F	1257	-	-	0/21/61/61	0/2/2/2

All (101) bond length outliers are listed below:

Mol	Chain	Res	Type	Atoms	Z	Observed(Å)	Ideal(Å)
9	E	1242	SF4	S4-FE3	-18.90	2.20	2.33
9	B	1242	SF4	S1-FE3	-18.52	2.20	2.33

Continued on next page...

Continued from previous page...

Mol	Chain	Res	Type	Atoms	Z	Observed(Å)	Ideal(Å)
9	B	1242	SF4	S4-FE3	-18.38	2.20	2.33
9	E	1242	SF4	S1-FE3	-18.25	2.21	2.33
8	B	1241	F3S	S3-FE4	-17.04	2.21	2.33
8	E	1241	F3S	S3-FE4	-14.99	2.23	2.33
9	B	1242	SF4	S2-FE3	-12.60	2.24	2.33
9	E	1242	SF4	S2-FE3	-12.52	2.24	2.33
9	E	1242	SF4	S3-FE2	-11.07	2.25	2.33
9	B	1242	SF4	S3-FE2	-10.26	2.26	2.33
9	E	1242	SF4	S3-FE4	-8.16	2.27	2.33
4	D	1656	FAD	C1'-C2'	7.66	1.58	1.51
4	A	1656	FAD	C1'-C2'	7.46	1.58	1.51
9	B	1242	SF4	S3-FE4	-7.42	2.28	2.33
9	B	1242	SF4	S2-FE1	-7.09	2.28	2.33
9	E	1242	SF4	S2-FE1	-5.50	2.29	2.33
4	A	1656	FAD	P-O3P	-5.41	1.50	1.59
4	D	1656	FAD	P-O3P	-5.32	1.50	1.59
9	B	1242	SF4	S4-FE2	-5.29	2.29	2.33
9	E	1242	SF4	S4-FE2	-4.90	2.30	2.33
10	C	1256	HEM	C3D-C2D	-4.81	1.35	1.43
9	B	1242	SF4	S3-FE1	-4.77	2.30	2.33
4	A	1656	FAD	C9A-N10	4.76	1.45	1.38
9	E	1242	SF4	S3-FE1	-4.71	2.30	2.33
10	F	1255	HEM	C3D-C2D	-4.60	1.35	1.43
10	F	1256	HEM	C3D-C2D	-4.58	1.35	1.43
10	C	1255	HEM	C3D-C2D	-4.54	1.35	1.43
10	F	1256	HEM	C3B-C2B	-4.46	1.36	1.43
10	F	1255	HEM	C3C-C2C	-4.43	1.36	1.43
10	C	1256	HEM	C3B-C2B	-4.40	1.36	1.43
10	F	1256	HEM	C3C-C2C	-4.34	1.36	1.43
4	D	1656	FAD	C9A-N10	4.34	1.45	1.38
10	C	1256	HEM	C3C-C2C	-4.33	1.36	1.43
10	C	1255	HEM	C3C-C2C	-4.32	1.36	1.43
10	C	1255	HEM	C3B-C2B	-4.19	1.36	1.43
10	F	1255	HEM	C4A-C3A	4.14	1.45	1.40
10	F	1255	HEM	C3B-C2B	-4.13	1.36	1.43
4	A	1656	FAD	C4X-C10	4.04	1.47	1.40
4	D	1656	FAD	PA-O2A	-3.96	1.37	1.55
10	C	1256	HEM	C4A-C3A	3.96	1.45	1.40
10	C	1255	HEM	C4A-C3A	3.86	1.45	1.40
4	A	1656	FAD	PA-O2A	-3.80	1.38	1.55
4	D	1656	FAD	C4X-C10	3.72	1.47	1.40
10	F	1256	HEM	C4A-C3A	3.70	1.44	1.40

Continued on next page...

Continued from previous page...

Mol	Chain	Res	Type	Atoms	Z	Observed(Å)	Ideal(Å)
4	D	1656	FAD	O4B-C1B	3.60	1.46	1.41
4	A	1656	FAD	P-O2P	-3.58	1.39	1.55
4	A	1656	FAD	O4B-C1B	3.57	1.46	1.41
4	A	1656	FAD	O5'-C5'	3.56	1.59	1.44
4	D	1656	FAD	O5'-C5'	3.47	1.59	1.44
4	A	1656	FAD	C2B-C1B	-3.42	1.48	1.53
4	D	1656	FAD	C2B-C1B	-3.36	1.48	1.53
4	D	1656	FAD	P-O2P	-3.35	1.40	1.55
11	C	1257	LMT	O5B-C1B	3.35	1.50	1.41
11	F	1257	LMT	O5B-C1B	3.31	1.50	1.41
10	F	1256	HEM	FE-NA	3.24	2.06	1.92
4	D	1656	FAD	C2-N3	3.17	1.43	1.37
10	C	1256	HEM	CBC-CAC	3.11	1.46	1.28
10	F	1255	HEM	CBB-CAB	3.09	1.46	1.28
10	C	1256	HEM	CHA-C4D	3.07	1.40	1.35
4	A	1656	FAD	C2-N3	3.03	1.43	1.37
10	C	1256	HEM	FE-NA	3.03	2.05	1.92
10	C	1255	HEM	CHB-C1B	2.99	1.40	1.35
10	C	1255	HEM	CBB-CAB	2.98	1.46	1.28
10	F	1256	HEM	CHB-C1B	2.96	1.40	1.35
10	C	1256	HEM	CBB-CAB	2.95	1.46	1.28
10	F	1256	HEM	CBC-CAC	2.93	1.45	1.28
9	B	1242	SF4	S1-FE2	-2.92	2.31	2.33
10	F	1256	HEM	CBB-CAB	2.91	1.45	1.28
9	E	1242	SF4	S1-FE2	-2.89	2.31	2.33
10	F	1256	HEM	CHA-C4D	2.87	1.39	1.35
10	F	1255	HEM	CBC-CAC	2.86	1.45	1.28
10	F	1255	HEM	CHB-C1B	2.85	1.39	1.35
10	C	1255	HEM	CBC-CAC	2.81	1.45	1.28
10	C	1256	HEM	CHB-C1B	2.79	1.39	1.35
4	A	1656	FAD	C4-C4X	2.71	1.45	1.41
10	F	1255	HEM	FE-NA	2.67	2.03	1.92
11	F	1257	LMT	C3'-C4'	2.65	1.60	1.52
4	D	1656	FAD	C4-C4X	2.64	1.45	1.41
11	C	1257	LMT	C3'-C4'	2.60	1.59	1.52
5	D	1657[B]	CIT	C2-C3	2.58	1.57	1.53
5	A	1657[A]	CIT	C2-C3	2.50	1.56	1.53
10	F	1255	HEM	CHA-C4D	2.46	1.39	1.35
10	C	1255	HEM	CHA-C4D	2.42	1.39	1.35
5	D	1657[A]	CIT	C2-C3	2.40	1.56	1.53
5	A	1657[B]	CIT	C2-C3	2.38	1.56	1.53
10	F	1255	HEM	CMB-C2B	2.28	1.54	1.47

Continued on next page...

Continued from previous page...

Mol	Chain	Res	Type	Atoms	Z	Observed(Å)	Ideal(Å)
10	C	1255	HEM	CMB-C2B	2.27	1.54	1.47
10	C	1255	HEM	CHC-C1C	2.24	1.40	1.36
10	C	1255	HEM	CHD-C4C	2.15	1.40	1.36
4	A	1656	FAD	C5X-N5	2.15	1.38	1.35
10	C	1255	HEM	FE-NC	2.13	2.05	1.97
8	E	1241	F3S	S3-FE1	2.13	2.34	2.33
5	A	1657[A]	CIT	C4-C3	2.13	1.56	1.53
10	C	1256	HEM	FE-NB	2.10	2.05	1.97
4	D	1656	FAD	C4A-N3A	2.10	1.38	1.35
10	F	1255	HEM	CMC-C2C	2.08	1.53	1.47
10	F	1255	HEM	CHC-C1C	2.06	1.40	1.36
10	C	1255	HEM	CMC-C2C	2.04	1.53	1.47
9	B	1242	SF4	S2-FE4	-2.03	2.31	2.33
10	C	1256	HEM	FE-NC	2.02	2.05	1.97
4	A	1656	FAD	C4A-N3A	2.02	1.38	1.35

All (57) bond angle outliers are listed below:

Mol	Chain	Res	Type	Atoms	Z	Observed(°)	Ideal(°)
4	D	1656	FAD	C2'-C1'-N10	-7.79	102.11	112.45
4	A	1656	FAD	C2'-C1'-N10	-7.64	102.32	112.45
4	D	1656	FAD	C1'-N10-C9A	-7.02	112.04	118.87
4	D	1656	FAD	O4B-C1B-N9A	-6.99	101.94	108.44
4	A	1656	FAD	C1'-N10-C9A	-6.85	112.21	118.87
4	A	1656	FAD	O4B-C1B-N9A	-6.78	102.14	108.44
10	C	1255	HEM	C3B-C4B-NB	-6.55	109.31	114.00
10	F	1255	HEM	C3B-C4B-NB	-6.43	109.40	114.00
10	F	1256	HEM	C3B-C4B-NB	-6.09	109.64	114.00
5	A	1657[B]	CIT	O6-C6-C3	5.82	121.36	112.89
10	C	1256	HEM	C3B-C4B-NB	-5.71	109.91	114.00
5	D	1657[B]	CIT	O6-C6-C3	5.59	121.03	112.89
4	D	1656	FAD	C4X-C10-N10	-5.50	117.77	120.51
4	A	1656	FAD	C2-N1-C10	5.46	120.48	114.98
5	A	1657[A]	CIT	O6-C6-C3	5.39	120.72	112.89
4	D	1656	FAD	C2-N1-C10	5.37	120.39	114.98
4	A	1656	FAD	C4X-C10-N10	-5.36	117.84	120.51
5	D	1657[A]	CIT	O6-C6-C3	5.29	120.58	112.89
4	A	1656	FAD	C1'-N10-C10	5.07	126.36	119.17
4	D	1656	FAD	C1'-N10-C10	5.01	126.28	119.17
11	F	1257	LMT	C1-O1'-C1'	4.49	122.04	113.96
11	C	1257	LMT	C1-O1'-C1'	4.47	122.00	113.96
11	F	1257	LMT	C3'-C4'-C5'	-3.36	103.31	110.85

Continued on next page...

Continued from previous page...

Mol	Chain	Res	Type	Atoms	Z	Observed(°)	Ideal(°)
11	C	1257	LMT	C3'-C4'-C5'	-3.33	103.37	110.85
4	D	1656	FAD	N3A-C2A-N1A	-3.29	125.95	128.71
10	C	1256	HEM	CBA-CAA-C2A	3.21	118.35	112.69
4	A	1656	FAD	N3A-C2A-N1A	-3.16	126.07	128.71
11	F	1257	LMT	O1'-C1'-C2'	-3.01	104.35	108.18
10	C	1256	HEM	C2D-C1D-ND	-2.99	109.41	112.93
11	C	1257	LMT	O1'-C1'-C2'	-2.98	104.39	108.18
4	D	1656	FAD	C5'-C4'-C3'	-2.92	106.56	112.06
10	C	1255	HEM	C2D-C1D-ND	-2.88	109.53	112.93
4	A	1656	FAD	C5'-C4'-C3'	-2.85	106.68	112.06
10	F	1255	HEM	C2D-C1D-ND	-2.84	109.57	112.93
10	F	1256	HEM	CBA-CAA-C2A	2.84	117.69	112.69
10	C	1256	HEM	CAD-C3D-C4D	2.76	129.48	124.53
10	F	1256	HEM	C2D-C1D-ND	-2.73	109.71	112.93
10	F	1256	HEM	CAD-C3D-C4D	2.60	129.21	124.53
10	F	1255	HEM	CBD-CAD-C3D	-2.49	108.94	114.37
4	A	1656	FAD	C2A-N1A-C6A	2.42	123.14	118.77
4	D	1656	FAD	C2A-N1A-C6A	2.39	123.09	118.77
10	F	1255	HEM	CBA-CAA-C2A	-2.27	108.69	112.69
4	A	1656	FAD	C4B-O4B-C1B	-2.26	107.29	109.75
10	C	1255	HEM	CBD-CAD-C3D	-2.26	109.44	114.37
4	D	1656	FAD	C4B-O4B-C1B	-2.25	107.31	109.75
4	D	1656	FAD	N3A-C4A-N9A	2.24	129.48	125.43
4	A	1656	FAD	N3A-C4A-N9A	2.24	129.47	125.43
10	C	1255	HEM	CBA-CAA-C2A	-2.23	108.76	112.69
11	F	1257	LMT	O1B-C4'-C3'	2.17	112.72	107.16
11	C	1257	LMT	O1B-C4'-C3'	2.16	112.70	107.16
4	D	1656	FAD	C5A-C4A-N9A	-2.15	104.06	107.16
4	A	1656	FAD	C5A-C4A-N9A	-2.09	104.14	107.16
10	F	1256	HEM	CMA-C3A-C4A	-2.07	125.44	128.62
4	D	1656	FAD	C2B-C1B-N9A	2.05	118.53	113.27
4	A	1656	FAD	O4'-C4'-C3'	2.04	114.13	109.05
4	D	1656	FAD	O4'-C4'-C3'	2.04	114.12	109.05
4	A	1656	FAD	C2B-C1B-N9A	2.02	118.44	113.27

There are no chirality outliers.

There are no torsion outliers.

There are no ring outliers.

5.7 Other polymers ⓘ

There are no such residues in this entry.

5.8 Polymer linkage issues

There are no chain breaks in this entry.

6 Fit of model and data ⓘ

6.1 Protein, DNA and RNA chains ⓘ

In the following table, the column labelled ‘#RSRZ> 2’ contains the number (and percentage) of RSRZ outliers, followed by percent RSRZ outliers for the chain as percentile scores relative to all X-ray entries and entries of similar resolution. The OWAB column contains the minimum, median, 95th percentile and maximum values of the occupancy-weighted average B-factor per residue. The column labelled ‘Q< 0.9’ lists the number of (and percentage) of residues with an average occupancy less than 0.9.

Mol	Chain	Analysed	<RSRZ>	#RSRZ>2		OWAB(Å ²)	Q<0.9
1	A	656/656 (100%)	0.31	55 (8%)	11 10	15, 29, 66, 78	13 (1%)
1	D	656/656 (100%)	0.35	52 (7%)	13 12	13, 28, 65, 78	16 (2%)
2	B	239/239 (100%)	-0.13	5 (2%)	60 61	16, 24, 46, 73	2 (0%)
2	E	239/239 (100%)	-0.15	6 (2%)	54 55	15, 23, 46, 72	2 (0%)
3	C	255/256 (99%)	0.65	31 (12%)	5 4	21, 37, 71, 93	11 (4%)
3	F	255/256 (99%)	0.34	13 (5%)	27 27	19, 37, 71, 92	9 (3%)
All	All	2300/2302 (99%)	0.27	162 (7%)	16 16	13, 29, 66, 93	53 (2%)

All (162) RSRZ outliers are listed below:

Mol	Chain	Res	Type	RSRZ
3	C	255	HIS	11.3
2	B	1	MET	9.6
3	C	254	HIS	8.9
3	C	72	GLU	7.2
3	C	253	THR	7.2
2	E	1	MET	6.9
1	D	340	THR	6.9
1	D	338	ILE	6.8
3	C	71	PHE	6.7
1	D	122	GLN	6.6
3	C	60	TRP	6.6
1	A	118	ILE	6.4
1	A	625	ALA	6.2
1	A	351	TYR	6.1
1	A	122	GLN	6.0
1	D	341	ASN	5.9
1	A	341	ASN	5.8
1	A	121	ALA	5.7
1	A	337	HIS	5.4

Continued on next page...

Continued from previous page...

Mol	Chain	Res	Type	RSRZ
1	D	337	HIS	5.3
1	A	120	ASN	5.3
1	D	116	MET	5.2
3	C	69	PHE	5.2
3	C	74	GLY	5.2
1	A	338	ILE	5.1
1	A	340	THR	5.0
2	B	2	GLY	5.0
3	C	70	ILE	4.9
1	A	354	GLY	4.8
1	D	123	LYS	4.8
1	A	123	LYS	4.8
1	A	116	MET	4.8
1	A	627	GLY	4.7
3	C	73	GLY	4.6
1	D	342	LEU	4.5
1	D	118	ILE	4.5
1	D	269	THR	4.4
1	D	623	LEU	4.4
1	A	342	LEU	4.4
1	A	358	ALA	4.4
1	D	121	ALA	4.3
3	C	65	PHE	4.3
3	F	254	HIS	4.3
1	D	335	ARG	4.2
1	A	332	ILE	4.2
1	A	276	GLY	4.2
1	D	336	LYS	4.2
1	D	124	THR	4.1
3	F	72	GLU	4.0
1	A	623	LEU	4.0
3	F	60	TRP	4.0
1	D	117	ALA	3.9
3	C	59	LEU	3.9
3	C	67	LEU	3.9
1	A	344	ASP	3.8
1	A	335	ARG	3.8
1	D	354	GLY	3.7
3	F	69	PHE	3.7
1	D	353	ALA	3.6
1	D	358	ALA	3.6
3	F	253	THR	3.6

Continued on next page...

Continued from previous page...

Mol	Chain	Res	Type	RSRZ
1	D	333	LEU	3.5
2	B	125	GLN	3.4
1	A	267	LEU	3.4
3	C	243	ILE	3.4
1	D	351	TYR	3.4
1	A	624	GLU	3.4
3	C	68	ASP	3.4
1	A	353	ALA	3.4
1	A	656	LYS	3.3
1	A	620	GLN	3.3
1	A	339	GLU	3.3
3	C	200	GLU	3.3
1	A	345	VAL	3.3
2	E	85	GLU	3.2
3	C	53	LEU	3.2
1	D	275	ASP	3.2
3	C	251	LYS	3.2
1	A	269	THR	3.2
1	A	357	PRO	3.1
1	D	332	ILE	3.1
3	F	47[A]	PHE	3.0
1	D	625	ALA	3.0
1	D	601	GLY	3.0
2	E	2	GLY	3.0
2	B	85	GLU	3.0
1	A	334	GLY	3.0
1	A	654	GLY	3.0
1	A	333	LEU	3.0
1	D	267	LEU	3.0
1	A	272	CYS	2.9
1	D	600	LYS	2.9
3	C	247	TYR	2.9
3	C	250	TYR	2.9
1	D	339	GLU	2.9
3	C	63	LYS	2.9
1	A	271	GLY	2.9
1	A	273[A]	ARG	2.8
1	D	656	LYS	2.8
3	C	248	PHE	2.8
1	A	124	THR	2.8
1	A	117	ALA	2.8
1	A	352	PHE	2.7

Continued on next page...

Continued from previous page...

Mol	Chain	Res	Type	RSRZ
3	C	1	MET	2.7
3	F	215	LEU	2.7
1	D	602	ASN	2.7
2	E	125	GLN	2.7
1	D	355	ILE	2.7
1	A	347	GLU	2.7
1	A	268	LEU	2.6
1	A	330	ILE	2.6
3	C	57	VAL	2.6
1	A	336	LYS	2.6
1	A	125	THR	2.5
1	D	334	GLY	2.5
1	A	349	CYS	2.5
1	D	274	GLY	2.5
3	C	211	LYS	2.5
1	D	611	LYS	2.5
3	F	65	PHE	2.5
1	D	614	GLU	2.5
1	D	119	ILE	2.5
2	E	239	ASN	2.4
1	D	352	PHE	2.4
3	C	64	LYS	2.4
1	A	572	GLU	2.4
1	A	600	LYS	2.4
1	A	628	LYS	2.4
3	C	252	ARG	2.4
1	D	610	VAL	2.4
3	C	75	LYS	2.4
3	F	211	LYS	2.4
3	C	157	VAL	2.3
1	D	271	GLY	2.3
1	A	355	ILE	2.3
1	A	119	ILE	2.3
1	A	611	LYS	2.3
1	D	599	ALA	2.3
3	C	242	ASN	2.3
1	D	276	GLY	2.3
1	A	356	ASP	2.3
1	A	626	ALA	2.3
1	D	628	LYS	2.3
3	F	243	ILE	2.3
1	D	268	LEU	2.3

Continued on next page...

Continued from previous page...

Mol	Chain	Res	Type	RSRZ
3	C	56	ASN	2.2
3	F	251	LYS	2.2
1	D	626	ALA	2.2
1	D	608	LEU	2.2
1	D	272	CYS	2.2
2	B	239	ASN	2.2
3	F	61	VAL	2.2
1	D	654	GLY	2.1
1	D	616	ILE	2.1
1	A	294	GLU	2.1
1	A	601	GLY	2.1
1	D	627	GLY	2.1
1	D	394	ALA	2.1
1	D	620	GLN	2.1
1	D	270	GLU	2.0
3	F	71	PHE	2.0
2	E	127	GLU	2.0

6.2 Non-standard residues in protein, DNA, RNA chains ⓘ

There are no non-standard protein/DNA/RNA residues in this entry.

6.3 Carbohydrates ⓘ

There are no carbohydrates in this entry.

6.4 Ligands ⓘ

In the following table, the Atoms column lists the number of modelled atoms in the group and the number defined in the chemical component dictionary. LLDF column lists the quality of electron density of the group with respect to its neighbouring residues in protein, DNA or RNA chains. The B-factors column lists the minimum, median, 95th percentile and maximum values of B factors of atoms in the group. The column labelled 'Q< 0.9' lists the number of atoms with occupancy less than 0.9.

Mol	Type	Chain	Res	Atoms	RSR	LLDF	B-factors(Å ²)	Q<0.9
11	LMT	C	1257	35/35	0.43	12.88	55,59,65,66	16
11	LMT	F	1257	35/35	0.35	7.82	55,58,65,66	16
5	CIT	D	1657[B]	13/13	0.55	5.50	29,32,35,36	13
5	CIT	A	1657[A]	13/13	0.50	5.42	31,35,39,41	13

Continued on next page...

Continued from previous page...

Mol	Type	Chain	Res	Atoms	RSR	LLDF	B-factors(\AA^2)	Q<0.9
5	CIT	D	1657[A]	13/13	0.55	5.11	26,34,41,42	13
5	CIT	A	1657[B]	13/13	0.50	5.03	25,30,32,35	13
6	NA	A	1658	1/1	0.19	0.70	19,19,19,19	0
8	F3S	E	1241	7/7	0.11	0.60	19,19,20,20	0
4	FAD	A	1656	53/53	0.18	0.35	13,17,21,22	0
4	FAD	D	1656	53/53	0.19	0.34	11,16,21,23	0
6	NA	D	1658	1/1	0.20	0.26	16,16,16,16	0
8	F3S	B	1241	7/7	0.09	-0.09	20,20,21,21	0
10	HEM	F	1256	43/43	0.12	-0.20	31,33,37,40	0
9	SF4	E	1242	8/8	0.11	-0.21	17,18,18,20	0
10	HEM	C	1255	43/43	0.11	-0.24	22,27,29,34	0
10	HEM	F	1255	43/43	0.11	-0.43	21,26,29,33	0
10	HEM	C	1256	43/43	0.12	-0.43	32,34,39,42	0
9	SF4	B	1242	8/8	0.10	-1.12	18,19,19,19	0
7	FES	B	1240	4/4	0.11	-1.57	17,18,18,18	0
7	FES	E	1240	4/4	0.12	-1.72	16,17,17,18	0

6.5 Other polymers ⓘ

There are no such residues in this entry.