



Full wwPDB X-ray Structure Validation Report

Nov 6, 2014 – 12:44 PM EST

PDB ID : 1C0U
Title : CRYSTAL STRUCTURE OF HIV-1 REVERSE TRANSCRIPTASE IN
COMPLEX WITH BM+50.0934
Authors : Ren, J.; Esnouf, R.M.; Hopkins, A.L.; Stuart, D.I.; Stammers, D.K.
Deposited on : 1999-07-19
Resolution : 2.52 Å(reported)

This is a full wwPDB validation report for a publicly released PDB entry.
We welcome your comments at validation@mail.wwpdb.org
A user guide is available at <http://wwpdb.org/ValidationPDFNotes.html>

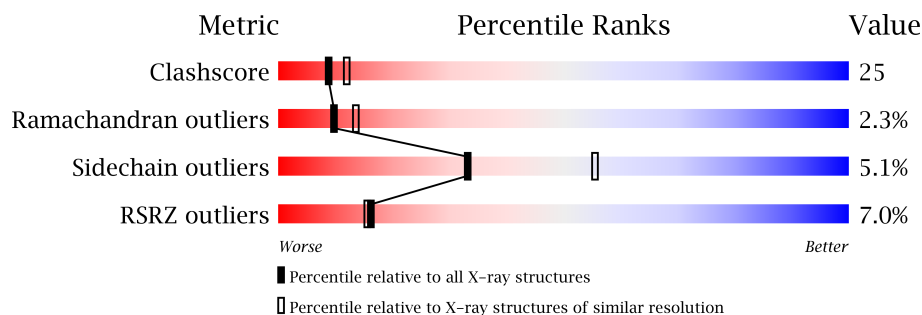
The following versions of software and data (see [references](#)) were used in the production of this report:

MolProbity : 4.02b-467
Mogul : 1.16 November 2013
Xtriage (Phenix) : dev-1439
EDS : stable24103
Percentile statistics : 21963
Refmac : 5.8.0049
CCP4 : 6.1.3
Ideal geometry (proteins) : Engh & Huber (2001)
Ideal geometry (DNA, RNA) : Parkinson et. al. (1996)
Validation Pipeline (wwPDB-VP) : stable24103

1 Overall quality at a glance

The reported resolution of this entry is 2.52 Å.

Percentile scores (ranging between 0-100) for global validation metrics of the entry are shown in the following graphic. The table shows the number of entries on which the scores are based.



Metric	Whole archive (#Entries)	Similar resolution (#Entries, resolution range(Å))
Clashscore	79885	4080 (2.54-2.50)
Ramachandran outliers	78287	3990 (2.54-2.50)
Sidechain outliers	78261	3992 (2.54-2.50)
RSRZ outliers	66119	3241 (2.54-2.50)

The table below summarises the geometric issues observed across the polymeric chains and their fit to the electron density. The red, orange, yellow and green segments on the lower bar indicate the fraction of residues that contain outliers for ≥ 3 , 2, 1 and 0 types of geometric quality criteria. The upper red bar (where present) indicates the fraction of residues that have poor fit to the electron density.

Mol	Chain	Length	Quality of chain
1	A	560	
2	B	440	

The following table lists non-polymeric compounds that are outliers for geometric or electron-density-fit criteria:

Mol	Type	Chain	Res	Geometry	Electron density
3	BM5	A	999	-	X

2 Entry composition i

There are 4 unique types of molecules in this entry. The entry contains 7938 atoms, of which 0 are hydrogen and 0 are deuterium.

In the tables below, the ZeroOcc column contains the number of atoms modelled with zero occupancy, the AltConf column contains the number of residues with at least one atom in alternate conformation and the Trace column contains the number of residues modelled with at most 2 atoms.

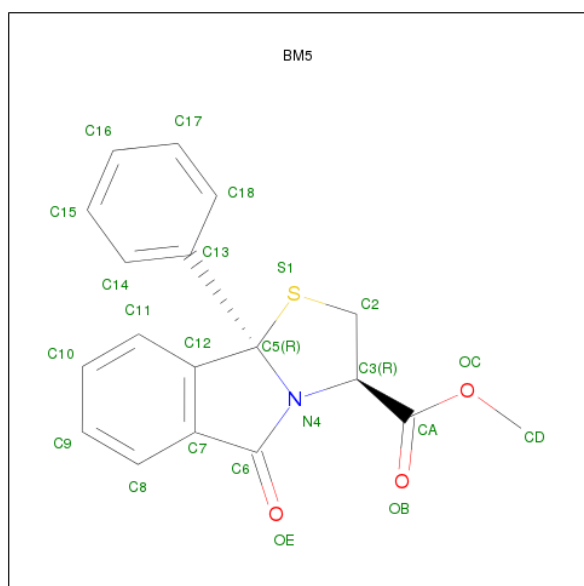
- Molecule 1 is a protein called HIV-1 REVERSE TRANSCRIPTASE (A-CHAIN).

Mol	Chain	Residues	Atoms					ZeroOcc	AltConf	Trace
1	A	539	Total	C	N	O	S	0	0	0
			4410	2853	734	815	8			

- Molecule 2 is a protein called HIV-1 REVERSE TRANSCRIPTASE (B-CHAIN).

Mol	Chain	Residues	Atoms					ZeroOcc	AltConf	Trace
2	B	414	Total	C	N	O	S	0	0	0
			3415	2219	566	623	7			

- Molecule 3 is (R)-(+)-5(9BH)-OXO-9B-PHENYL-2,3-DIHYDROTHIAZOLO[2,3-A]IS OINDOL-3-CARBOXYLICACID METHYL ESTER (three-letter code: BM5) (formula: C₁₈H₁₅NO₃S).



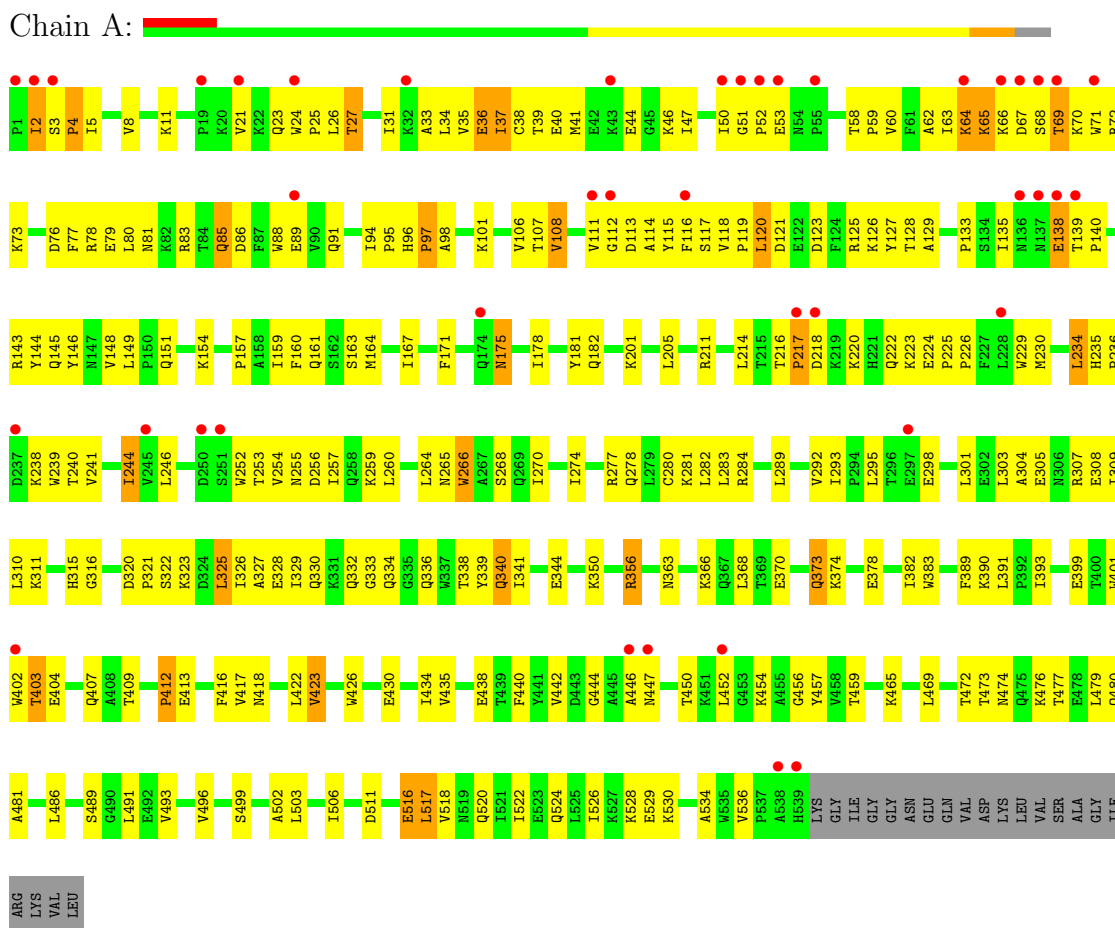
- Molecule 4 is water.

Mol	Chain	Residues	Atoms		ZeroOcc	AltConf
4	A	57	Total 57	O 57	0	0
4	B	33	Total 33	O 33	0	0

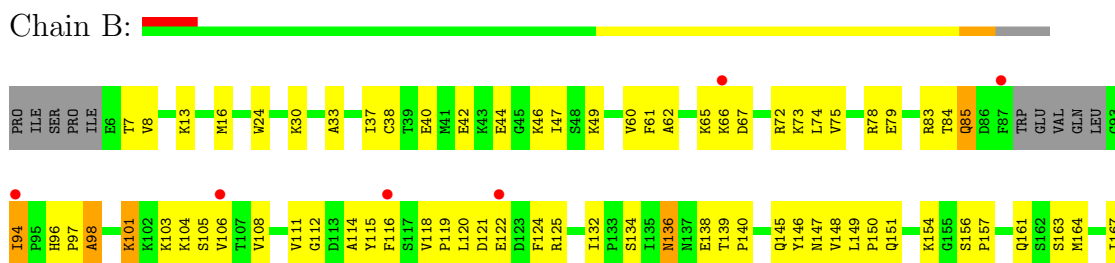
3 Residue-property plots

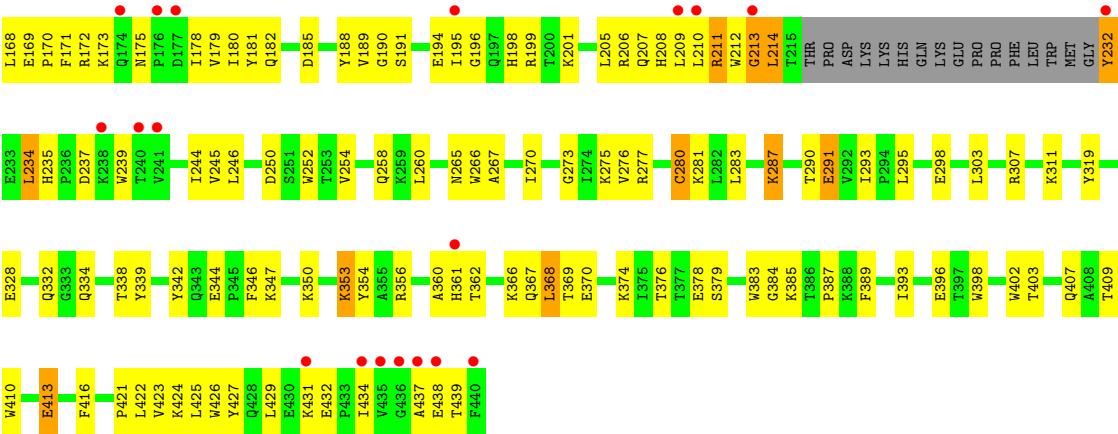
These plots are drawn for all protein, RNA and DNA chains in the entry. The first graphic for a chain summarises the proportions of errors displayed in the second graphic. The second graphic shows the sequence view annotated by issues in geometry and electron density. Residues are color-coded according to the number of geometric quality criteria for which they contain at least one outlier: green = 0, yellow = 1, orange = 2 and red = 3 or more. A red dot above a residue indicates a poor fit to the electron density ($RSRZ > 2$). Stretches of 2 or more consecutive residues without any outlier are shown as a green connector. Residues present in the sample, but not in the model, are shown in grey.

• Molecule 1: HIV-1 REVERSE TRANSCRIPTASE (A-CHAIN)



• Molecule 2: HIV-1 REVERSE TRANSCRIPTASE (B-CHAIN)





4 Data and refinement statistics

Property	Value	Source
Space group	P 21 21 21	Depositor
Cell constants a, b, c, α , β , γ	137.30Å 108.50Å 72.00Å 90.00° 90.00° 90.00°	Depositor
Resolution (Å)	15.00 – 2.52 14.91 – 2.52	Depositor EDS
% Data completeness (in resolution range)	88.8 (15.00-2.52) 88.7 (14.91-2.52)	Depositor EDS
R_{merge}	0.09	Depositor
R_{sym}	(Not available)	Depositor
$\langle I/\sigma(I) \rangle$ ¹	1.78 (at 2.51Å)	Xtriage
Refinement program	CNS	Depositor
R, R_{free}	0.232 , 0.298 0.243 , (Not available)	Depositor DCC
R_{free} test set	No test flags present.	DCC
Wilson B-factor (Å ²)	46.8	Xtriage
Anisotropy	0.387	Xtriage
Bulk solvent k_{sol} (e/Å ³), B_{sol} (Å ²)	0.31 , 37.8	EDS
Estimated twinning fraction	No twinning to report.	Xtriage
L-test for twinning	$\langle L \rangle = 0.48$, $\langle L^2 \rangle = 0.31$	Xtriage
Outliers	0 of 32731 reflections	Xtriage
F_o, F_c correlation	0.92	EDS
Total number of atoms	7938	wwPDB-VP
Average B, all atoms (Å ²)	54.0	wwPDB-VP

Xtriage's analysis on translational NCS is as follows: *The largest off-origin peak in the Patterson function is 3.16% of the height of the origin peak. No significant pseudotranslation is detected.*

¹Intensities estimated from amplitudes.

5 Model quality

5.1 Standard geometry

Bond lengths and bond angles in the following residue types are not validated in this section: CSD, BM5

The Z score for a bond length (or angle) is the number of standard deviations the observed value is removed from the expected value. A bond length (or angle) with $|Z| > 5$ is considered an outlier worth inspection. RMSZ is the root-mean-square of all Z scores of the bond lengths (or angles).

Mol	Chain	Bond lengths		Bond angles	
		RMSZ	$\# Z > 5$	RMSZ	$\# Z > 5$
1	A	0.38	0/4518	0.65	0/6140
2	B	0.40	0/3509	0.63	0/4763
All	All	0.39	0/8027	0.64	0/10903

There are no bond length outliers.

There are no bond angle outliers.

There are no chirality outliers.

There are no planarity outliers.

5.2 Close contacts

In the following table, the Non-H and H(model) columns list the number of non-hydrogen atoms and hydrogen atoms in the chain respectively. The H(added) column lists the number of hydrogens added by MolProbity. The Clashes column lists the number of clashes within the asymmetric unit, and the number in parentheses is this value normalized per 1000 atoms of the molecule in the chain. The Symm-Clashes column gives symmetry related clashes, in the same way as for the Clashes column.

Mol	Chain	Non-H	H(model)	H(added)	Clashes	Symm-Clashes
1	A	4410	0	4452	239	0
2	B	3415	0	3445	171	0
3	A	23	0	14	1	0
4	A	57	0	0	4	0
4	B	33	0	0	4	0
All	All	7938	0	7911	401	0

Clashscore is defined as the number of clashes calculated for the entry per 1000 atoms (including hydrogens) of the entry. The overall clashscore for this entry is 25.

All (401) close contacts within the same asymmetric unit are listed below.

Atom-1	Atom-2	Distance(Å)	Clash(Å)
1:A:503:LEU:HA	1:A:506:ILE:HD12	1.43	0.99
2:B:125:ARG:HE	2:B:147:ASN:HA	1.33	0.94
1:A:244:ILE:HD13	1:A:244:ILE:H	1.32	0.93
1:A:244:ILE:HD11	1:A:310:LEU:HD22	1.50	0.93
2:B:111:VAL:HB	2:B:214:LEU:HD23	1.50	0.91
2:B:168:LEU:HD13	2:B:180:ILE:HG21	1.56	0.88
2:B:209:LEU:HG	2:B:214:LEU:HB2	1.56	0.87
1:A:476:LYS:HG2	1:A:517:LEU:HD12	1.55	0.87
1:A:65:LYS:HE3	1:A:67:ASP:H	1.40	0.87
2:B:332:GLN:NE2	2:B:424:LYS:HE2	1.94	0.83
1:A:239:TRP:CE2	1:A:316:GLY:HA3	2.13	0.83
1:A:64:LYS:H	1:A:64:LYS:HD3	1.43	0.83
2:B:114:ALA:HB2	2:B:214:LEU:HG	1.63	0.81
1:A:79:GLU:O	1:A:83:ARG:HG3	1.80	0.80
2:B:164:MET:SD	2:B:167:ILE:HD11	2.23	0.78
2:B:106:VAL:HB	2:B:234:LEU:HD12	1.66	0.78
1:A:401:TRP:CZ3	1:A:409:THR:HG21	2.18	0.78
2:B:178:ILE:HG12	2:B:191:SER:HB3	1.66	0.77
1:A:239:TRP:CZ2	1:A:316:GLY:HA3	2.22	0.75
2:B:65:LYS:HA	2:B:407:GLN:HE21	1.51	0.75
2:B:209:LEU:HD11	2:B:214:LEU:HD22	1.70	0.74
1:A:450:THR:HB	1:A:452:LEU:HD23	1.70	0.74
1:A:65:LYS:O	1:A:69:THR:HA	1.88	0.73
1:A:238:LYS:HG3	1:A:316:GLY:O	1.88	0.73
1:A:308:GLU:O	1:A:311:LYS:HB2	1.89	0.72
1:A:36:GLU:O	1:A:39:THR:HG22	1.90	0.71
2:B:46:LYS:HE2	2:B:116:PHE:CG	2.26	0.71
1:A:446:ALA:HB2	1:A:477:THR:HG21	1.73	0.71
1:A:171:PHE:O	1:A:175:ASN:ND2	2.24	0.70
1:A:289:LEU:HD22	1:A:289:LEU:H	1.57	0.70
1:A:308:GLU:HA	1:A:311:LYS:HD2	1.74	0.70
2:B:434:ILE:H	2:B:434:ILE:HD12	1.54	0.70
1:A:96:HIS:HD2	1:A:98:ALA:H	1.39	0.69
2:B:423:VAL:HG21	4:B:1043:HOH:O	1.94	0.68
2:B:94:ILE:H	2:B:94:ILE:HD13	1.59	0.68
2:B:214:LEU:HD12	2:B:214:LEU:N	2.08	0.68
1:A:114:ALA:HB1	1:A:160:PHE:CZ	2.29	0.68
1:A:516:GLU:O	1:A:520:GLN:HG3	1.94	0.68
1:A:244:ILE:CD1	1:A:310:LEU:HD22	2.25	0.67
1:A:330:GLN:HB2	1:A:338:THR:OG1	1.95	0.67
2:B:30:LYS:HG2	2:B:62:ALA:HB3	1.77	0.66
1:A:469:LEU:HD11	1:A:480:GLN:HG2	1.78	0.65

Continued on next page...

Continued from previous page...

Atom-1	Atom-2	Distance(Å)	Clash(Å)
2:B:191:SER:HG	2:B:198:HIS:HD1	1.44	0.65
1:A:123:ASP:O	1:A:126:LYS:HE2	1.96	0.64
1:A:86:ASP:HA	1:A:154:LYS:NZ	2.11	0.64
2:B:139:THR:HG22	2:B:140:PRO:O	1.98	0.64
2:B:106:VAL:HB	2:B:234:LEU:CD1	2.27	0.64
2:B:136:ASN:HB3	2:B:138:GLU:HG3	1.80	0.64
2:B:244:ILE:HG13	2:B:426:TRP:CZ2	2.33	0.64
2:B:369:THR:HG22	2:B:398:TRP:CH2	2.33	0.64
2:B:194:GLU:OE2	2:B:195:ILE:HG22	1.99	0.63
1:A:308:GLU:HA	1:A:311:LYS:CD	2.28	0.63
1:A:235:HIS:HB2	1:A:238:LYS:O	1.99	0.63
2:B:125:ARG:NE	2:B:147:ASN:HA	2.12	0.63
2:B:206:ARG:O	2:B:210:LEU:N	2.31	0.62
1:A:139:THR:HB	1:A:140:PRO:HD2	1.81	0.62
2:B:350:LYS:HE3	2:B:378:GLU:OE2	1.99	0.62
2:B:356:ARG:CB	2:B:367:GLN:HG2	2.30	0.62
2:B:171:PHE:CG	2:B:205:LEU:HD23	2.33	0.62
1:A:96:HIS:CD2	1:A:98:ALA:H	2.18	0.62
2:B:105:SER:HB3	2:B:235:HIS:CD2	2.35	0.62
2:B:114:ALA:HB2	2:B:214:LEU:CG	2.30	0.62
2:B:368:LEU:HD13	2:B:398:TRP:CZ3	2.35	0.62
1:A:8:VAL:O	1:A:121:ASP:HB2	2.00	0.61
1:A:218:ASP:O	1:A:222:GLN:HG2	2.00	0.61
1:A:24:TRP:CD1	1:A:25:PRO:HD2	2.36	0.61
2:B:277:ARG:HH22	2:B:281:LYS:HZ2	1.45	0.61
1:A:69:THR:HG22	1:A:69:THR:O	2.00	0.61
2:B:194:GLU:CD	2:B:196:GLY:H	2.02	0.61
1:A:46:LYS:HD3	1:A:116:PHE:HD1	1.66	0.61
2:B:270:ILE:HG12	2:B:346:PHE:HB3	1.81	0.61
1:A:161:GLN:HG3	1:A:182:GLN:NE2	2.15	0.60
1:A:50:ILE:HD13	1:A:145:GLN:HB3	1.82	0.60
1:A:161:GLN:HA	1:A:182:GLN:OE1	2.01	0.60
2:B:232:TYR:CE1	2:B:234:LEU:HD23	2.36	0.60
1:A:260:LEU:HG	1:A:264:LEU:HD23	1.83	0.60
1:A:21:VAL:CG1	1:A:59:PRO:HD3	2.32	0.59
1:A:280:CSD:C	1:A:281:LYS:N	2.65	0.59
2:B:332:GLN:HE21	2:B:424:LYS:HE2	1.67	0.59
1:A:135:ILE:O	1:A:138:GLU:HG2	2.03	0.59
2:B:60:VAL:HG12	2:B:75:VAL:HG22	1.83	0.59
2:B:111:VAL:CB	2:B:214:LEU:HD23	2.27	0.59
1:A:244:ILE:HD13	1:A:244:ILE:N	2.12	0.59
1:A:114:ALA:HB1	1:A:160:PHE:CE2	2.38	0.58

Continued on next page...

Continued from previous page...

Atom-1	Atom-2	Distance(Å)	Clash(Å)
1:A:46:LYS:HD3	1:A:116:PHE:CD1	2.37	0.58
1:A:265:ASN:O	1:A:268:SER:HB3	2.03	0.58
1:A:211:ARG:HG2	1:A:211:ARG:HH11	1.67	0.58
2:B:7:THR:HG22	2:B:119:PRO:HG2	1.84	0.58
1:A:175:ASN:N	1:A:175:ASN:HD22	2.00	0.58
1:A:503:LEU:CA	1:A:506:ILE:HD12	2.27	0.58
2:B:112:GLY:O	2:B:115:TYR:HD2	1.87	0.58
2:B:434:ILE:HD12	2:B:434:ILE:N	2.18	0.58
2:B:40:GLU:HG3	2:B:44:GLU:OE2	2.04	0.58
1:A:106:VAL:HG23	1:A:236:PRO:HB3	1.85	0.58
2:B:111:VAL:HG12	2:B:209:LEU:HD21	1.85	0.58
2:B:116:PHE:HA	2:B:148:VAL:HG21	1.84	0.58
1:A:534:ALA:HB1	4:B:1113:HOH:O	2.04	0.58
2:B:354:TYR:OH	2:B:370:GLU:HB3	2.04	0.57
1:A:373:GLN:NE2	2:B:396:GLU:HB3	2.19	0.57
1:A:111:VAL:O	1:A:114:ALA:HB2	2.04	0.57
1:A:330:GLN:NE2	1:A:340:GLN:OE1	2.37	0.57
1:A:2:ILE:HG13	1:A:3:SER:H	1.69	0.57
1:A:107:THR:HG22	1:A:108:VAL:H	1.68	0.57
1:A:175:ASN:N	1:A:175:ASN:ND2	2.52	0.57
1:A:33:ALA:HB1	1:A:71:TRP:HB2	1.86	0.57
2:B:171:PHE:CD2	2:B:205:LEU:HD23	2.39	0.57
2:B:287:LYS:HD2	2:B:293:ILE:HD11	1.85	0.57
1:A:341:ILE:HG21	1:A:383:TRP:CH2	2.40	0.57
1:A:489:SER:OG	1:A:493:VAL:HG21	2.05	0.57
1:A:138:GLU:HG3	1:A:139:THR:H	1.69	0.57
1:A:76:ASP:OD2	1:A:78:ARG:HG3	2.05	0.57
2:B:413:GLU:HA	2:B:413:GLU:OE1	2.04	0.57
1:A:125:ARG:HG2	1:A:146:TYR:O	2.04	0.56
1:A:31:ILE:O	1:A:35:VAL:HG23	2.05	0.56
1:A:366:LYS:O	1:A:370:GLU:HG3	2.05	0.56
2:B:209:LEU:CD1	2:B:214:LEU:HD22	2.35	0.56
1:A:330:GLN:HB2	1:A:338:THR:HG1	1.70	0.56
1:A:373:GLN:HG2	4:A:1013:HOH:O	2.04	0.56
1:A:260:LEU:HG	1:A:264:LEU:CD2	2.35	0.56
2:B:344:GLU:HB3	2:B:347:LYS:HE3	1.87	0.56
1:A:112:GLY:C	1:A:114:ALA:H	2.09	0.56
1:A:211:ARG:HG2	1:A:211:ARG:NH1	2.20	0.56
2:B:178:ILE:HG12	2:B:191:SER:CB	2.35	0.56
2:B:332:GLN:HE22	2:B:424:LYS:HE2	1.70	0.56
1:A:389:PHE:HB3	1:A:391:LEU:HD21	1.86	0.56
1:A:336:GLN:HG3	1:A:356:ARG:HG2	1.86	0.56

Continued on next page...

Continued from previous page...

Atom-1	Atom-2	Distance(Å)	Clash(Å)
1:A:163:SER:O	1:A:167:ILE:HG13	2.06	0.55
1:A:118:VAL:HB	1:A:149:LEU:HD22	1.89	0.55
1:A:21:VAL:HG11	1:A:59:PRO:HD3	1.87	0.55
2:B:94:ILE:HD13	2:B:94:ILE:N	2.20	0.55
1:A:129:ALA:HA	1:A:144:TYR:O	2.07	0.55
1:A:434:ILE:HD11	1:A:530:LYS:HB3	1.88	0.55
1:A:33:ALA:HB1	1:A:71:TRP:CB	2.36	0.55
1:A:307:ARG:O	1:A:311:LYS:HG3	2.07	0.55
1:A:254:VAL:HB	1:A:289:LEU:O	2.06	0.55
1:A:2:ILE:HG13	1:A:3:SER:N	2.22	0.55
2:B:108:VAL:HG22	2:B:188:TYR:CD2	2.42	0.55
1:A:328:GLU:HG3	1:A:390:LYS:HB2	1.88	0.55
2:B:106:VAL:N	2:B:234:LEU:O	2.39	0.55
2:B:78:ARG:HD2	2:B:413:GLU:OE1	2.07	0.54
1:A:34:LEU:HD21	1:A:62:ALA:HB2	1.89	0.54
1:A:11:LYS:O	1:A:85:GLN:HB3	2.07	0.54
1:A:244:ILE:H	1:A:244:ILE:CD1	2.13	0.54
1:A:266:TRP:C	1:A:266:TRP:CD1	2.81	0.54
1:A:326:ILE:HG22	1:A:327:ALA:N	2.22	0.54
2:B:353:LYS:HB3	2:B:353:LYS:NZ	2.23	0.54
1:A:33:ALA:O	1:A:36:GLU:HB3	2.08	0.54
1:A:181:TYR:HB2	3:A:999:BM5:OB	2.08	0.54
2:B:356:ARG:HB2	2:B:367:GLN:HG2	1.89	0.54
1:A:450:THR:CB	1:A:452:LEU:HD23	2.35	0.53
2:B:356:ARG:HB3	2:B:367:GLN:HG2	1.90	0.53
1:A:499:SER:O	1:A:502:ALA:HB3	2.08	0.53
2:B:47:ILE:HG22	2:B:146:TYR:HA	1.90	0.53
2:B:115:TYR:CE1	2:B:156:SER:HB3	2.44	0.53
2:B:167:ILE:O	2:B:208:HIS:NE2	2.42	0.53
2:B:171:PHE:CZ	2:B:205:LEU:HB2	2.44	0.53
1:A:430:GLU:HG3	1:A:434:ILE:HD11	1.91	0.53
2:B:252:TRP:CZ3	2:B:260:LEU:HD22	2.44	0.53
1:A:64:LYS:H	1:A:64:LYS:CD	2.18	0.53
2:B:213:GLY:H	2:B:214:LEU:HD12	1.73	0.53
1:A:320:ASP:OD1	1:A:323:LYS:HG3	2.10	0.52
1:A:403:THR:HG23	1:A:404:GLU:HG2	1.92	0.52
1:A:65:LYS:HE3	1:A:66:LYS:H	1.74	0.52
1:A:332:GLN:HG2	1:A:332:GLN:O	2.10	0.52
1:A:417:VAL:O	1:A:417:VAL:HG13	2.09	0.52
2:B:387:PRO:HG2	2:B:389:PHE:CE1	2.45	0.52
2:B:97:PRO:HG3	2:B:181:TYR:HB2	1.91	0.52
1:A:536:VAL:HG12	2:B:258:GLN:HB3	1.92	0.52

Continued on next page...

Continued from previous page...

Atom-1	Atom-2	Distance(Å)	Clash(Å)
2:B:111:VAL:CG1	2:B:209:LEU:HD21	2.40	0.52
1:A:27:THR:O	1:A:31:ILE:HG13	2.10	0.52
1:A:447:ASN:HB3	1:A:450:THR:OG1	2.09	0.52
1:A:434:ILE:CD1	1:A:530:LYS:HB3	2.40	0.52
2:B:46:LYS:HE2	2:B:116:PHE:CD1	2.45	0.52
2:B:213:GLY:C	2:B:214:LEU:HD12	2.30	0.52
1:A:115:TYR:CD1	1:A:151:GLN:HA	2.46	0.51
2:B:13:LYS:HB2	2:B:16:MET:HG3	1.91	0.51
2:B:332:GLN:NE2	2:B:424:LYS:CE	2.71	0.51
1:A:3:SER:HB3	1:A:5:ILE:HG13	1.92	0.51
2:B:116:PHE:HA	2:B:148:VAL:CG2	2.41	0.51
2:B:172:ARG:HE	2:B:180:ILE:HB	1.75	0.51
2:B:207:GLN:O	2:B:210:LEU:HB3	2.10	0.51
1:A:149:LEU:HD21	1:A:159:ILE:HG22	1.92	0.51
1:A:293:ILE:HD12	1:A:293:ILE:N	2.24	0.51
1:A:401:TRP:HZ3	1:A:409:THR:HG21	1.72	0.51
2:B:239:TRP:CH2	2:B:378:GLU:HG2	2.46	0.51
1:A:138:GLU:HG3	1:A:139:THR:N	2.26	0.51
1:A:444:GLY:HA2	1:A:454:LYS:O	2.11	0.51
2:B:298:GLU:CD	2:B:298:GLU:H	2.13	0.51
1:A:252:TRP:NE1	1:A:295:LEU:HD11	2.25	0.50
1:A:38:CYS:HB3	1:A:144:TYR:CE1	2.46	0.50
1:A:86:ASP:HA	1:A:154:LYS:HZ2	1.75	0.50
2:B:379:SER:OG	2:B:387:PRO:HD3	2.11	0.50
1:A:3:SER:HB2	1:A:119:PRO:HD3	1.93	0.50
1:A:373:GLN:HG3	1:A:374:LYS:N	2.26	0.50
2:B:438:GLU:O	2:B:438:GLU:HG2	2.12	0.50
2:B:79:GLU:O	2:B:83:ARG:HG3	2.10	0.50
2:B:73:LYS:NZ	2:B:146:TYR:OH	2.37	0.50
2:B:246:LEU:HB2	2:B:307:ARG:NH1	2.27	0.50
2:B:30:LYS:HE3	2:B:62:ALA:O	2.12	0.50
1:A:164:MET:HE1	1:A:214:LEU:HD13	1.93	0.50
2:B:180:ILE:HD13	2:B:189:VAL:HG22	1.93	0.50
2:B:376:THR:HG21	2:B:410:TRP:CZ3	2.47	0.50
1:A:374:LYS:O	1:A:378:GLU:HG3	2.12	0.49
1:A:120:LEU:CD2	1:A:121:ASP:H	2.25	0.49
2:B:195:ILE:HD11	2:B:199:ARG:HH21	1.76	0.49
2:B:427:TYR:C	2:B:429:LEU:H	2.15	0.49
2:B:431:LYS:HG2	2:B:432:GLU:N	2.27	0.49
1:A:246:LEU:HD22	1:A:260:LEU:HD11	1.95	0.49
1:A:35:VAL:O	1:A:39:THR:HB	2.12	0.49
1:A:41:MET:HE3	1:A:73:LYS:HE2	1.94	0.49

Continued on next page...

Continued from previous page...

Atom-1	Atom-2	Distance(Å)	Clash(Å)
1:A:86:ASP:HA	1:A:154:LYS:HZ1	1.77	0.49
1:A:34:LEU:HD22	1:A:73:LYS:HG3	1.93	0.49
1:A:81:ASN:C	1:A:83:ARG:H	2.16	0.49
1:A:116:PHE:O	1:A:148:VAL:HG11	2.13	0.49
2:B:120:LEU:O	2:B:121:ASP:C	2.51	0.48
2:B:134:SER:OG	2:B:139:THR:HB	2.12	0.48
1:A:259:LYS:HG2	4:A:1007:HOH:O	2.13	0.48
1:A:486:LEU:HB3	1:A:524:GLN:HB3	1.95	0.48
1:A:65:LYS:CE	1:A:66:LYS:H	2.25	0.48
1:A:94:ILE:HD11	4:A:1054:HOH:O	2.13	0.48
2:B:164:MET:HG2	2:B:182:GLN:NE2	2.28	0.48
2:B:332:GLN:HE21	2:B:332:GLN:HA	1.78	0.48
2:B:163:SER:O	2:B:167:ILE:HG23	2.13	0.48
2:B:276:VAL:O	2:B:280:CYS:HB2	2.12	0.48
1:A:241:VAL:HG21	1:A:270:ILE:HG21	1.95	0.48
2:B:393:ILE:O	2:B:416:PHE:HB3	2.13	0.48
1:A:255:ASN:ND2	1:A:289:LEU:HB3	2.29	0.48
1:A:399:GLU:HA	1:A:399:GLU:OE1	2.14	0.48
2:B:164:MET:HA	2:B:167:ILE:HG12	1.94	0.48
1:A:240:THR:HA	1:A:315:HIS:HA	1.95	0.48
1:A:2:ILE:CG1	1:A:3:SER:H	2.26	0.48
1:A:457:TYR:C	1:A:457:TYR:CD1	2.86	0.48
2:B:211:ARG:HG3	2:B:212:TRP:CD1	2.49	0.48
2:B:332:GLN:NE2	2:B:424:LYS:HG2	2.29	0.48
2:B:38:CYS:SG	2:B:132:ILE:HD11	2.54	0.47
1:A:503:LEU:HG	2:B:421:PRO:HB2	1.96	0.47
1:A:260:LEU:HD21	1:A:303:LEU:HD13	1.95	0.47
1:A:120:LEU:HD23	1:A:121:ASP:H	1.79	0.47
1:A:36:GLU:O	1:A:37:ILE:C	2.53	0.47
1:A:393:ILE:HB	1:A:423:VAL:HG22	1.97	0.47
2:B:103:LYS:HE3	2:B:179:VAL:HG23	1.95	0.47
1:A:402:TRP:CZ2	2:B:362:THR:HA	2.50	0.47
1:A:426:TRP:HB3	1:A:526:ILE:HG12	1.95	0.47
1:A:117:SER:HB3	1:A:214:LEU:HD23	1.95	0.47
1:A:216:THR:HG23	1:A:217:PRO:HD2	1.96	0.47
1:A:473:THR:O	1:A:477:THR:HG23	2.15	0.47
1:A:79:GLU:HG3	1:A:83:ARG:HD2	1.97	0.47
1:A:305:GLU:O	1:A:309:ILE:HG13	2.14	0.47
1:A:63:ILE:O	1:A:72:ARG:HB2	2.15	0.47
2:B:287:LYS:HD2	2:B:291:GLU:HG2	1.97	0.46
1:A:77:PHE:CD2	1:A:80:LEU:HD23	2.50	0.46
2:B:328:GLU:O	2:B:339:TYR:HA	2.14	0.46

Continued on next page...

Continued from previous page...

Atom-1	Atom-2	Distance(Å)	Clash(Å)
1:A:254:VAL:HG13	1:A:283:LEU:HD12	1.96	0.46
1:A:402:TRP:CH2	2:B:362:THR:HA	2.50	0.46
1:A:50:ILE:HG23	1:A:145:GLN:HG2	1.98	0.46
1:A:161:GLN:HG3	1:A:182:GLN:HE22	1.79	0.46
2:B:266:TRP:HB2	2:B:422:LEU:HD13	1.96	0.46
2:B:104:LYS:HA	2:B:237:ASP:OD1	2.16	0.46
2:B:169:GLU:N	2:B:170:PRO:HD2	2.31	0.46
2:B:319:TYR:OH	2:B:385:LYS:HE2	2.16	0.46
2:B:434:ILE:H	2:B:434:ILE:CD1	2.23	0.46
1:A:491:LEU:HD13	1:A:529:GLU:OE1	2.16	0.46
2:B:7:THR:CG2	2:B:119:PRO:HG2	2.46	0.46
2:B:118:VAL:HB	2:B:149:LEU:CD1	2.46	0.46
1:A:50:ILE:HG13	1:A:143:ARG:HB3	1.97	0.46
2:B:427:TYR:C	2:B:429:LEU:N	2.69	0.46
1:A:418:ASN:HA	1:A:422:LEU:HD21	1.98	0.45
2:B:175:ASN:ND2	2:B:201:LYS:HD2	2.31	0.45
1:A:246:LEU:HD22	1:A:260:LEU:CD1	2.46	0.45
1:A:51:GLY:C	1:A:53:GLU:H	2.19	0.45
2:B:72:ARG:CZ	2:B:409:THR:HG22	2.46	0.45
1:A:115:TYR:OH	1:A:157:PRO:HG3	2.17	0.45
1:A:518:VAL:O	1:A:522:ILE:HG13	2.17	0.45
2:B:122:GLU:HA	2:B:125:ARG:NH1	2.31	0.45
2:B:61:PHE:CE1	2:B:74:LEU:HD23	2.52	0.45
1:A:117:SER:CB	1:A:214:LEU:HD23	2.46	0.45
1:A:323:LYS:HZ2	1:A:344:GLU:HG2	1.81	0.45
1:A:225:PRO:HA	1:A:226:PRO:C	2.36	0.45
2:B:252:TRP:CD1	2:B:295:LEU:HD11	2.51	0.45
1:A:116:PHE:CD2	1:A:116:PHE:N	2.83	0.45
1:A:178:ILE:HD11	1:A:201:LYS:HG3	1.99	0.45
1:A:325:LEU:HD23	1:A:325:LEU:HA	1.87	0.45
1:A:244:ILE:CG1	1:A:310:LEU:HD22	2.46	0.45
1:A:95:PRO:HA	2:B:136:ASN:O	2.17	0.45
2:B:254:VAL:O	2:B:258:GLN:HG3	2.16	0.45
2:B:74:LEU:HD12	2:B:75:VAL:N	2.32	0.45
2:B:239:TRP:CZ2	2:B:378:GLU:HG2	2.52	0.44
2:B:42:GLU:OE1	2:B:49:LYS:NZ	2.47	0.44
2:B:437:ALA:CB	2:B:439:THR:HG23	2.46	0.44
1:A:115:TYR:HD1	1:A:151:GLN:HA	1.81	0.44
1:A:402:TRP:CG	1:A:403:THR:N	2.85	0.44
1:A:255:ASN:CG	1:A:289:LEU:HB3	2.38	0.44
2:B:267:ALA:HB2	2:B:426:TRP:CZ3	2.51	0.44
2:B:319:TYR:CD2	2:B:383:TRP:CD1	3.05	0.44

Continued on next page...

Continued from previous page...

Atom-1	Atom-2	Distance(Å)	Clash(Å)
1:A:229:TRP:HB2	1:A:234:LEU:HD22	1.99	0.44
2:B:195:ILE:HD11	2:B:199:ARG:NH2	2.33	0.44
1:A:435:VAL:HG22	2:B:290:THR:HG21	1.99	0.44
1:A:108:VAL:CG1	1:A:223:LYS:HB2	2.47	0.44
1:A:255:ASN:O	1:A:259:LYS:HG3	2.18	0.44
2:B:277:ARG:HH22	2:B:281:LYS:NZ	2.14	0.44
2:B:303:LEU:O	2:B:307:ARG:HG3	2.17	0.44
2:B:61:PHE:CZ	2:B:74:LEU:HG	2.52	0.44
1:A:226:PRO:HB3	1:A:235:HIS:CE1	2.52	0.44
2:B:173:LYS:N	2:B:173:LYS:HD2	2.33	0.44
1:A:404:GLU:OE1	2:B:334:GLN:HG2	2.18	0.44
1:A:281:LYS:O	1:A:284:ARG:HG3	2.18	0.43
1:A:21:VAL:HG13	1:A:59:PRO:HD3	2.00	0.43
2:B:115:TYR:CD1	2:B:156:SER:HB3	2.53	0.43
1:A:238:LYS:HG2	1:A:239:TRP:N	2.32	0.43
1:A:280:CSD:C	1:A:281:LYS:CA	2.96	0.43
1:A:47:ILE:HD12	1:A:144:TYR:CG	2.53	0.43
2:B:338:THR:HG22	2:B:353:LYS:HG3	2.00	0.43
2:B:353:LYS:HD3	4:B:1049:HOH:O	2.17	0.43
1:A:363:ASN:HA	1:A:511:ASP:OD1	2.18	0.43
2:B:332:GLN:NE2	2:B:332:GLN:HA	2.33	0.43
1:A:253:THR:HG22	1:A:292:VAL:HG22	2.01	0.43
1:A:320:ASP:OD2	1:A:322:SER:HB3	2.18	0.43
2:B:368:LEU:HB3	2:B:398:TRP:HZ3	1.84	0.43
2:B:398:TRP:O	2:B:402:TRP:HD1	2.02	0.43
1:A:407:GLN:NE2	4:A:1047:HOH:O	2.51	0.43
1:A:23:GLN:OE1	1:A:60:VAL:HG12	2.17	0.43
2:B:67:ASP:OD1	2:B:67:ASP:O	2.36	0.43
2:B:172:ARG:HH21	2:B:180:ILE:CG2	2.31	0.43
2:B:98:ALA:O	2:B:101:LYS:NZ	2.41	0.43
2:B:120:LEU:HD21	2:B:124:PHE:HD2	1.84	0.43
1:A:435:VAL:CG2	2:B:290:THR:HG21	2.48	0.43
2:B:40:GLU:O	2:B:44:GLU:HG3	2.18	0.43
1:A:120:LEU:CD2	1:A:121:ASP:N	2.82	0.43
2:B:205:LEU:C	2:B:205:LEU:HD13	2.39	0.43
1:A:328:GLU:O	1:A:339:TYR:HA	2.18	0.42
1:A:416:PHE:HE1	1:A:422:LEU:HD22	1.84	0.42
1:A:116:PHE:HA	1:A:148:VAL:CG2	2.49	0.42
1:A:329:ILE:HA	1:A:338:THR:O	2.19	0.42
2:B:146:TYR:CD2	2:B:150:PRO:HB3	2.54	0.42
2:B:366:LYS:HG2	2:B:370:GLU:OE2	2.19	0.42
1:A:40:GLU:OE2	1:A:44:GLU:HG3	2.19	0.42

Continued on next page...

Continued from previous page...

Atom-1	Atom-2	Distance(Å)	Clash(Å)
1:A:96:HIS:CD2	1:A:97:PRO:N	2.88	0.42
2:B:156:SER:N	2:B:157:PRO:HD2	2.34	0.42
1:A:334:GLN:OE1	1:A:356:ARG:NH2	2.53	0.42
1:A:472:THR:OG1	1:A:473:THR:N	2.52	0.42
2:B:125:ARG:HB3	2:B:145:GLN:NE2	2.34	0.42
1:A:292:VAL:C	1:A:293:ILE:HD12	2.40	0.42
1:A:479:LEU:HB2	1:A:517:LEU:HD13	2.02	0.42
1:A:138:GLU:CG	1:A:139:THR:H	2.29	0.42
2:B:384:GLY:O	2:B:385:LYS:HB3	2.20	0.42
2:B:402:TRP:CG	2:B:403:THR:N	2.87	0.42
1:A:389:PHE:HB3	1:A:391:LEU:CD2	2.50	0.42
1:A:88:TRP:CE3	1:A:88:TRP:HA	2.55	0.42
2:B:307:ARG:O	2:B:311:LYS:HG3	2.19	0.42
2:B:61:PHE:CZ	2:B:74:LEU:HD23	2.55	0.42
1:A:260:LEU:HD21	1:A:303:LEU:CD1	2.49	0.41
2:B:84:THR:HB	2:B:154:LYS:HE2	2.02	0.41
1:A:253:THR:OG1	1:A:256:ASP:OD2	2.33	0.41
1:A:442:VAL:HB	1:A:481:ALA:HB1	2.01	0.41
1:A:101:LYS:HD3	1:A:321:PRO:HG2	2.02	0.41
1:A:412:PRO:O	1:A:413:GLU:C	2.58	0.41
1:A:96:HIS:CD2	1:A:97:PRO:HD2	2.56	0.41
1:A:101:LYS:HD3	1:A:321:PRO:CG	2.50	0.41
1:A:224:GLU:HA	1:A:225:PRO:HD3	1.96	0.41
2:B:208:HIS:O	2:B:211:ARG:HG2	2.21	0.41
2:B:354:TYR:HD1	2:B:374:LYS:NZ	2.19	0.41
1:A:216:THR:CG2	1:A:217:PRO:HD2	2.51	0.41
1:A:257:ILE:HD13	1:A:282:LEU:HD23	2.03	0.41
2:B:103:LYS:HE3	2:B:190:GLY:O	2.20	0.41
2:B:33:ALA:O	2:B:37:ILE:HG13	2.21	0.41
1:A:26:LEU:HD12	1:A:133:PRO:HG3	2.03	0.41
1:A:143:ARG:HG2	1:A:143:ARG:NH1	2.36	0.41
1:A:116:PHE:HA	1:A:148:VAL:HG21	2.03	0.41
1:A:303:LEU:O	1:A:307:ARG:HG3	2.21	0.41
1:A:438:GLU:OE1	1:A:459:THR:HG21	2.21	0.41
1:A:58:THR:HG23	1:A:76:ASP:O	2.21	0.41
2:B:161:GLN:HB3	4:B:1115:HOH:O	2.20	0.41
2:B:151:GLN:HB3	2:B:185:ASP:OD1	2.21	0.41
1:A:293:ILE:CD1	1:A:293:ILE:N	2.83	0.41
1:A:301:LEU:O	1:A:304:ALA:N	2.53	0.41
1:A:402:TRP:C	1:A:404:GLU:N	2.73	0.41
2:B:46:LYS:HA	2:B:148:VAL:HG13	2.03	0.41
1:A:239:TRP:O	1:A:316:GLY:N	2.43	0.40

Continued on next page...

Continued from previous page...

Atom-1	Atom-2	Distance(Å)	Clash(Å)
1:A:282:LEU:HD21	1:A:295:LEU:HD23	2.03	0.40
1:A:37:ILE:HD11	1:A:71:TRP:O	2.21	0.40
1:A:68:SER:HB3	1:A:70:LYS:NZ	2.36	0.40
2:B:169:GLU:HB3	2:B:173:LYS:NZ	2.36	0.40
2:B:245:VAL:HG23	2:B:245:VAL:O	2.21	0.40
2:B:273:GLY:O	2:B:275:LYS:HG3	2.21	0.40
1:A:98:ALA:HB2	1:A:350:LYS:HB2	2.03	0.40
1:A:456:GLY:HA3	1:A:465:LYS:O	2.21	0.40
1:A:489:SER:O	1:A:528:LYS:NZ	2.54	0.40
1:A:378:GLU:O	1:A:382:ILE:HG12	2.20	0.40
1:A:402:TRP:O	1:A:404:GLU:N	2.54	0.40
1:A:68:SER:CB	1:A:70:LYS:HZ2	2.34	0.40
2:B:106:VAL:HG22	2:B:190:GLY:HA3	2.04	0.40
1:A:126:LYS:HE3	1:A:127:TYR:CZ	2.57	0.40
1:A:128:THR:OG1	1:A:146:TYR:HB2	2.22	0.40
1:A:97:PRO:HG3	1:A:234:LEU:HD11	2.02	0.40
1:A:264:LEU:HD12	1:A:274:ILE:CG2	2.51	0.40
1:A:333:GLY:O	1:A:334:GLN:C	2.59	0.40
1:A:336:GLN:CG	1:A:356:ARG:HG2	2.52	0.40
1:A:440:PHE:CE1	1:A:489:SER:HB3	2.56	0.40
2:B:342:TYR:C	2:B:342:TYR:CD1	2.95	0.40
1:A:278:GLN:HG3	1:A:298:GLU:HB3	2.03	0.40
2:B:332:GLN:HE21	2:B:332:GLN:CA	2.34	0.40

There are no symmetry-related clashes.

5.3 Torsion angles

5.3.1 Protein backbone ⓘ

In the following table, the Percentiles column shows the percent Ramachandran outliers of the chain as a percentile score with respect to all X-ray entries followed by that with respect to entries of similar resolution.

The Analysed column shows the number of residues for which the backbone conformation was analysed, and the total number of residues.

Mol	Chain	Analysed	Favoured	Allowed	Outliers	Percentiles	
1	A	535/560 (96%)	474 (89%)	48 (9%)	13 (2%)	9	13
2	B	408/440 (93%)	360 (88%)	39 (10%)	9 (2%)	10	15
All	All	943/1000 (94%)	834 (88%)	87 (9%)	22 (2%)	10	13

All (22) Ramachandran outliers are listed below:

Mol	Chain	Res	Type
1	A	2	ILE
1	A	138	GLU
2	B	360	ALA
1	A	36	GLU
1	A	37	ILE
1	A	113	ASP
2	B	66	LYS
2	B	96	HIS
1	A	4	PRO
1	A	69	THR
1	A	85	GLN
1	A	91	GLN
2	B	98	ALA
2	B	101	LYS
2	B	136	ASN
2	B	211	ARG
2	B	85	GLN
1	A	52	PRO
1	A	412	PRO
1	A	108	VAL
2	B	213	GLY
1	A	217	PRO

5.3.2 Protein sidechains ⓘ

In the following table, the Percentiles column shows the percent sidechain outliers of the chain as a percentile score with respect to all X-ray entries followed by that with respect to entries of similar resolution. The Analysed column shows the number of residues for which the sidechain conformation was analysed, and the total number of residues.

Mol	Chain	Analysed	Rotameric	Outliers	Percentiles	
1	A	483/499 (97%)	457 (95%)	26 (5%)	31	52
2	B	375/400 (94%)	357 (95%)	18 (5%)	35	58
All	All	858/899 (95%)	814 (95%)	44 (5%)	33	55

All (44) residues with a non-rotameric sidechain are listed below:

Mol	Chain	Res	Type
1	A	4	PRO
1	A	27	THR

Continued on next page...

Continued from previous page...

Mol	Chain	Res	Type
1	A	64	LYS
1	A	65	LYS
1	A	89	GLU
1	A	97	PRO
1	A	120	LEU
1	A	175	ASN
1	A	205	LEU
1	A	220	LYS
1	A	230	MET
1	A	234	LEU
1	A	244	ILE
1	A	266	TRP
1	A	277	ARG
1	A	325	LEU
1	A	340	GLN
1	A	356	ARG
1	A	368	LEU
1	A	373	GLN
1	A	403	THR
1	A	423	VAL
1	A	474	ASN
1	A	496	VAL
1	A	516	GLU
1	A	517	LEU
2	B	8	VAL
2	B	24	TRP
2	B	85	GLN
2	B	94	ILE
2	B	214	LEU
2	B	232	TYR
2	B	234	LEU
2	B	250	ASP
2	B	265	ASN
2	B	280	CYS
2	B	283	LEU
2	B	287	LYS
2	B	291	GLU
2	B	353	LYS
2	B	361	HIS
2	B	368	LEU
2	B	413	GLU
2	B	425	LEU

Some sidechains can be flipped to improve hydrogen bonding and reduce clashes. All (26) such sidechains are listed below:

Mol	Chain	Res	Type
1	A	96	HIS
1	A	174	GLN
1	A	175	ASN
1	A	208	HIS
1	A	222	GLN
1	A	235	HIS
1	A	255	ASN
1	A	278	GLN
1	A	336	GLN
1	A	373	GLN
1	A	394	GLN
1	A	407	GLN
1	A	480	GLN
1	A	487	GLN
1	A	500	GLN
1	A	512	GLN
1	A	520	GLN
2	B	85	GLN
2	B	147	ASN
2	B	175	ASN
2	B	182	GLN
2	B	197	GLN
2	B	265	ASN
2	B	278	GLN
2	B	332	GLN
2	B	407	GLN

5.3.3 RNA ⓘ

There are no RNA chains in this entry.

5.4 Non-standard residues in protein, DNA, RNA chains ⓘ

1 non-standard protein/DNA/RNA residue is modelled in this entry.

In the following table, the Counts columns list the number of bonds (or angles) for which Mogul statistics could be retrieved, the number of bonds (or angles) that are observed in the model and the number of bonds (or angles) that are defined in the chemical component dictionary. The Link column lists molecule types, if any, to which the group is linked. The Z score for a bond length (or angle) is the number of standard deviations the observed value is removed from the expected

value. A bond length (or angle) with $|Z| > 2$ is considered an outlier worth inspection. RMSZ is the root-mean-square of all Z scores of the bond lengths (or angles).

Mol	Type	Chain	Res	Link	Bond lengths			Bond angles		
					Counts	RMSZ	$\# Z > 2$	Counts	RMSZ	$\# Z > 2$
1	CSD	A	280	1	7,7,8	6.32	1 (14%)	6,8,10	4.54	5 (83%)

In the following table, the Chirals column lists the number of chiral outliers, the number of chiral centers analysed, the number of these observed in the model and the number defined in the chemical component dictionary. Similar counts are reported in the Torsion and Rings columns. '-' means no outliers of that kind were identified.

Mol	Type	Chain	Res	Link	Chirals	Torsions	Rings
1	CSD	A	280	1	-	1/3/6/8	0/0/0/0

All (1) bond length outliers are listed below:

Mol	Chain	Res	Type	Atoms	Z	Observed(Å)	Ideal(Å)
1	A	280	CSD	O-C	16.56	1.22	1.11

All (5) bond angle outliers are listed below:

Mol	Chain	Res	Type	Atoms	Z	Observed(°)	Ideal(°)
1	A	280	CSD	CA-CB-SG	7.93	122.13	110.82
1	A	280	CSD	OD2-SG-OD1	4.94	119.09	109.75
1	A	280	CSD	OD2-SG-CB	4.06	113.27	98.82
1	A	280	CSD	C-CA-N	-3.95	109.89	113.83
1	A	280	CSD	OD1-SG-CB	2.09	108.90	105.29

There are no chirality outliers.

All (1) torsion outliers are listed below:

Mol	Chain	Res	Type	Atoms
1	A	280	CSD	CA-CB-SG-OD1

There are no ring outliers.

5.5 Carbohydrates ⓘ

There are no carbohydrates in this entry.

5.6 Ligand geometry ⓘ

1 ligand is modelled in this entry.

In the following table, the Counts columns list the number of bonds (or angles) for which Mogul statistics could be retrieved, the number of bonds (or angles) that are observed in the model and the number of bonds (or angles) that are defined in the chemical component dictionary. The Link column lists molecule types, if any, to which the group is linked. The Z score for a bond length (or angle) is the number of standard deviations the observed value is removed from the expected value. A bond length (or angle) with $|Z| > 2$ is considered an outlier worth inspection. RMSZ is the root-mean-square of all Z scores of the bond lengths (or angles).

Mol	Type	Chain	Res	Link	Bond lengths			Bond angles		
					Counts	RMSZ	$\# Z > 2$	Counts	RMSZ	$\# Z > 2$
3	BM5	A	999	-	26,26,26	2.26	5 (19%)	39,39,39	2.21	6 (15%)

In the following table, the Chirals column lists the number of chiral outliers, the number of chiral centers analysed, the number of these observed in the model and the number defined in the chemical component dictionary. Similar counts are reported in the Torsion and Rings columns. '-' means no outliers of that kind were identified.

Mol	Type	Chain	Res	Link	Chirals	Torsions	Rings
3	BM5	A	999	-	-	0/12/42/42	0/4/4/4

All (5) bond length outliers are listed below:

Mol	Chain	Res	Type	Atoms	Z	Observed(Å)	Ideal(Å)
3	A	999	BM5	C2-C3	-7.70	1.38	1.52
3	A	999	BM5	C3-N4	4.72	1.52	1.46
3	A	999	BM5	C5-C13	3.30	1.58	1.53
3	A	999	BM5	C2-S1	-3.08	1.76	1.80
3	A	999	BM5	C14-C13	2.03	1.42	1.39

All (6) bond angle outliers are listed below:

Mol	Chain	Res	Type	Atoms	Z	Observed(°)	Ideal(°)
3	A	999	BM5	C2-C3-CA	11.41	128.54	111.30
3	A	999	BM5	C3-N4-C6	3.52	131.16	121.33
3	A	999	BM5	S1-C5-N4	-3.45	100.09	104.52
3	A	999	BM5	C2-C3-N4	-2.63	103.02	106.41
3	A	999	BM5	C5-N4-C3	-2.43	103.49	112.93
3	A	999	BM5	CA-C3-N4	2.00	117.39	111.65

There are no chirality outliers.

There are no torsion outliers.

There are no ring outliers.

5.7 Other polymers ⓘ

There are no such residues in this entry.

5.8 Polymer linkage issues

There are no chain breaks in this entry.

6 Fit of model and data ⓘ

6.1 Protein, DNA and RNA chains ⓘ

In the following table, the column labelled ‘#RSRZ> 2’ contains the number (and percentage) of RSRZ outliers, followed by percent RSRZ outliers for the chain as percentile scores relative to all X-ray entries and entries of similar resolution. The OWAB column contains the minimum, median, 95th percentile and maximum values of the occupancy-weighted average B-factor per residue. The column labelled ‘Q< 0.9’ lists the number of (and percentage) of residues with an average occupancy less than 0.9.

Mol	Chain	Analysed	<RSRZ>	#RSRZ>2		OWAB(Å ²)	Q<0.9
1	A	539/560 (96%)	0.28	42 (7%)	13 12	19, 51, 97, 150	0
2	B	414/440 (94%)	0.22	25 (6%)	21 21	20, 47, 102, 148	0
All	All	953/1000 (95%)	0.25	67 (7%)	16 15	19, 49, 101, 150	0

All (67) RSRZ outliers are listed below:

Mol	Chain	Res	Type	RSRZ
1	A	68	SER	10.2
1	A	67	ASP	7.5
2	B	440	PHE	6.6
2	B	436	GLY	6.5
2	B	232	TYR	5.8
1	A	136	ASN	5.8
2	B	240	THR	5.5
2	B	435	VAL	5.4
1	A	66	LYS	5.4
2	B	94	ILE	5.2
1	A	53	GLU	5.2
1	A	52	PRO	5.2
1	A	139	THR	5.0
2	B	213	GLY	4.9
2	B	437	ALA	4.8
1	A	112	GLY	4.4
1	A	245	VAL	4.4
1	A	1	PRO	4.3
1	A	24	TRP	4.3
1	A	538	ALA	4.2
1	A	71	TRP	4.2
1	A	2	ILE	4.2
2	B	434	ILE	4.1
1	A	3	SER	3.8

Continued on next page...

Continued from previous page...

Mol	Chain	Res	Type	RSRZ
1	A	137	ASN	3.8
1	A	116	PHE	3.6
1	A	446	ALA	3.5
1	A	64	LYS	3.5
1	A	89	GLU	3.3
2	B	174	GLN	3.2
2	B	241	VAL	3.1
2	B	116	PHE	3.1
2	B	176	PRO	3.0
1	A	237	ASP	2.9
2	B	238	LYS	2.9
2	B	210	LEU	2.9
1	A	228	LEU	2.8
1	A	447	ASN	2.8
2	B	195	ILE	2.8
1	A	51	GLY	2.8
1	A	174	GLN	2.8
2	B	87	PHE	2.7
2	B	106	VAL	2.6
2	B	438	GLU	2.6
1	A	251	SER	2.6
1	A	539	HIS	2.5
2	B	361	HIS	2.5
1	A	218	ASP	2.5
1	A	138	GLU	2.5
1	A	69	THR	2.5
1	A	217	PRO	2.5
2	B	431	LYS	2.4
1	A	452	LEU	2.4
1	A	250	ASP	2.4
1	A	43	LYS	2.3
2	B	66	LYS	2.3
1	A	21	VAL	2.2
2	B	177	ASP	2.2
1	A	402	TRP	2.2
1	A	297	GLU	2.1
1	A	111	VAL	2.1
1	A	32	LYS	2.1
1	A	50	ILE	2.1
2	B	209	LEU	2.0
2	B	122	GLU	2.0
1	A	19	PRO	2.0

Continued on next page...

Continued from previous page...

Mol	Chain	Res	Type	RSRZ
1	A	55	PRO	2.0

6.2 Non-standard residues in protein, DNA, RNA chains ⓘ

In the following table, the Atoms column lists the number of modelled atoms in the group and the number defined in the chemical component dictionary. LLDF column lists the quality of electron density of the group with respect to its neighbouring residues in protein, DNA or RNA chains. The B-factors column lists the minimum, median, 95th percentile and maximum values of B factors of atoms in the group. The column labelled 'Q< 0.9' lists the number of atoms with occupancy less than 0.9.

Mol	Type	Chain	Res	Atoms	RSR	LLDF	B-factors(Å ²)	Q<0.9
1	CSD	A	280	8/9	0.13	-0.57	40,46,64,64	0

6.3 Carbohydrates ⓘ

There are no carbohydrates in this entry.

6.4 Ligands ⓘ

In the following table, the Atoms column lists the number of modelled atoms in the group and the number defined in the chemical component dictionary. LLDF column lists the quality of electron density of the group with respect to its neighbouring residues in protein, DNA or RNA chains. The B-factors column lists the minimum, median, 95th percentile and maximum values of B factors of atoms in the group. The column labelled 'Q< 0.9' lists the number of atoms with occupancy less than 0.9.

Mol	Type	Chain	Res	Atoms	RSR	LLDF	B-factors(Å ²)	Q<0.9
3	BM5	A	999	23/23	0.24	3.78	25,47,57,61	0

6.5 Other polymers ⓘ

There are no such residues in this entry.