



# wwPDB X-ray Structure Validation Summary Report

Feb 27, 2014 – 04:43 PM GMT

PDB ID : 4C0R  
Title : Molecular and structural basis of glutathione import in Gram-positive bacteria via GshT and the cystine ABC importer TcyBC of Streptococcus mutans.  
Authors : Vergauwen, B.; Verstraete, K.; Senadheera, D.B.; Dansercoer, A.; Cvitkovitch, D.G.; Guedon, E.; Savvides, S.N.  
Deposited on : 2013-08-07  
Resolution : 1.55 Å(reported)

This is a wwPDB validation summary report for a publicly released PDB entry.  
We welcome your comments at [validation@mail.wwpdb.org](mailto:validation@mail.wwpdb.org)  
A user guide is available at <http://wwpdb.org/ValidationPDFNotes.html>

---

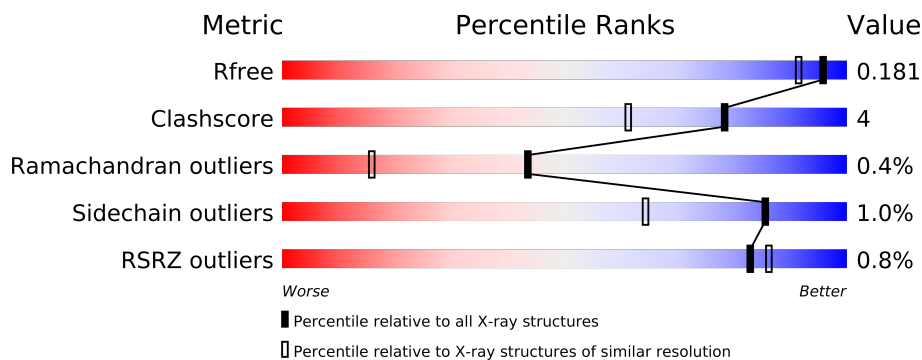
The following versions of software and data (see [references](#)) were used in the production of this report:

MolProbity : 4.02b-467  
Mogul : 1.15 2013  
Xtriage (Phenix) : dev-1323  
EDS : stable22639  
Percentile statistics : 21963  
Refmac : 5.8.0049  
CCP4 : 6.3.0 (Settle)  
Ideal geometry (proteins) : Engh & Huber (2001)  
Ideal geometry (DNA, RNA) : Parkinson et. al. (1996)  
Validation Pipeline (wwPDB-VP) : stable22683

# 1 Overall quality at a glance

The reported resolution of this entry is 1.55 Å.

Percentile scores (ranging between 0-100) for global validation metrics of the entry are shown in the following graphic. The table shows the number of entries on which the scores are based.



Metric	Whole archive (#Entries)	Similar resolution (#Entries, resolution range(Å))
$R_{free}$	66092	1031 (1.56-1.52)
Clashscore	79885	1155 (1.56-1.52)
Ramachandran outliers	78287	1127 (1.56-1.52)
Sidechain outliers	78261	1125 (1.56-1.52)
RSRZ outliers	66119	1031 (1.56-1.52)

The table below summarises the geometric issues observed across the polymeric chains and their fit to the electron density. The red, orange, yellow and green segments on the lower bar indicate the fraction of residues that contain outliers for  $\geq 3$ , 2, 1 and 0 types of geometric quality criteria. The upper red bar (where present) indicates the fraction of residues that have poor fit to the electron density.

Mol	Chain	Length	Quality of chain
1	A	248	
1	B	248	

## 2 Entry composition

There are 5 unique types of molecules in this entry. The entry contains 8081 atoms, of which 3569 are hydrogens and 0 are deuterium.

In the tables below, the ZeroOcc column contains the number of atoms modelled with zero occupancy, the AltConf column contains the number of residues with at least one atom in alternate conformation and the Trace column contains the number of residues modelled with at most 2 atoms.

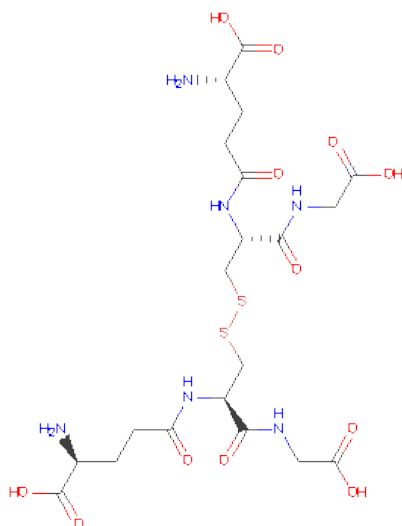
- Molecule 1 is a protein called PUTATIVE AMINO ACID BINDING PROTEIN.

Mol	Chain	Residues	Atoms						ZeroOcc	AltConf	Trace
1	A	239	Total	C	H	N	O	S	0	5	0
			3674	1200	1793	303	375	3			
1	B	238	Total	C	H	N	O	S	0	5	0
			3586	1184	1738	302	360	2			

There are 20 discrepancies between the modelled and reference sequences:

Chain	Residue	Modelled	Actual	Comment	Reference
A	1	MET	-	EXPRESSION TAG	UNP M2L4D8
A	2	ASP	-	EXPRESSION TAG	UNP M2L4D8
A	241	LEU	-	EXPRESSION TAG	UNP M2L4D8
A	242	GLU	-	EXPRESSION TAG	UNP M2L4D8
A	243	HIS	-	EXPRESSION TAG	UNP M2L4D8
A	244	HIS	-	EXPRESSION TAG	UNP M2L4D8
A	245	HIS	-	EXPRESSION TAG	UNP M2L4D8
A	246	HIS	-	EXPRESSION TAG	UNP M2L4D8
A	247	HIS	-	EXPRESSION TAG	UNP M2L4D8
A	248	HIS	-	EXPRESSION TAG	UNP M2L4D8
B	1	MET	-	EXPRESSION TAG	UNP M2L4D8
B	2	ASP	-	EXPRESSION TAG	UNP M2L4D8
B	241	LEU	-	EXPRESSION TAG	UNP M2L4D8
B	242	GLU	-	EXPRESSION TAG	UNP M2L4D8
B	243	HIS	-	EXPRESSION TAG	UNP M2L4D8
B	244	HIS	-	EXPRESSION TAG	UNP M2L4D8
B	245	HIS	-	EXPRESSION TAG	UNP M2L4D8
B	246	HIS	-	EXPRESSION TAG	UNP M2L4D8
B	247	HIS	-	EXPRESSION TAG	UNP M2L4D8
B	248	HIS	-	EXPRESSION TAG	UNP M2L4D8

- Molecule 2 is OXIDIZED GLUTATHIONE DISULFIDE (three-letter code: GDS) (formula:  $C_{20}H_{32}N_6O_{12}S_2$ ).



Mol	Chain	Residues	Atoms						ZeroOcc	AltConf
2	A	1	Total	C	H	N	O	S	0	0
			50	16	18	5	9	2		
2	B	1	Total	C	H	N	O	S	0	0
			54	17	20	5	10	2		

- Molecule 3 is CADMIUM ION (three-letter code: CD) (formula: Cd).

Mol	Chain	Residues	Atoms		ZeroOcc	AltConf
3	B	18	Total	Cd	0	0
			18	18		
3	A	22	Total	Cd	0	0
			22	22		

- Molecule 4 is CHLORIDE ION (three-letter code: CL) (formula: Cl).

Mol	Chain	Residues	Atoms		ZeroOcc	AltConf
4	B	1	Total	Cl	0	0
			1	1		
4	A	5	Total	Cl	0	0
			5	5		

- Molecule 5 is water.

Mol	Chain	Residues	Atoms		ZeroOcc	AltConf
5	A	359	Total	O	0	0
			359	359		

*Continued on next page...*

*Continued from previous page...*

Mol	Chain	Residues	Atoms		ZeroOcc	AltConf
5	B	312	Total 312	O 312	0	0

### 3 Residue-property plots

These plots are drawn for all protein, RNA and DNA chains in the entry. The first graphic for a chain summarises the proportions of errors displayed in the second graphic. The second graphic shows the sequence view annotated by issues in geometry and electron density. Residues are color-coded according to the number of geometric quality criteria for which they contain at least one outlier: green = 0, yellow = 1, orange = 2 and red = 3 or more. A red dot above a residue indicates a poor fit to the electron density ( $RSRZ > 2$ ). Stretches of 2 or more consecutive residues without any outlier are shown as a green connector. Residues present in the sample, but not in the model, are shown in grey.

- Molecule 1: PUTATIVE AMINO ACID BINDING PROTEIN

Chain A: 



- Molecule 1: PUTATIVE AMINO ACID BINDING PROTEIN

Chain B: 



## 4 Data and refinement statistics

Property	Value	Source
Space group	P 1 21 1	Depositor
Cell constants a, b, c, $\alpha$ , $\beta$ , $\gamma$	37.04Å 103.12Å 64.09Å 90.00° 92.31° 90.00°	Depositor
Resolution (Å)	37.01 – 1.55 37.01 – 1.55	Depositor EDS
% Data completeness (in resolution range)	98.9 (37.01-1.55) 98.9 (37.01-1.55)	Depositor EDS
$R_{merge}$	0.06	Depositor
$R_{sym}$	(Not available)	Depositor
$\langle I/\sigma(I) \rangle$ <sup>1</sup>	1.48 (at 1.55Å)	Xtriage
Refinement program	PHENIX (PHENIX.REFINE)	Depositor
R, $R_{free}$	0.155 , 0.183 0.153 , 0.181	Depositor DCC
$R_{free}$ test set	3457 reflections (5.00%)	DCC
Wilson B-factor (Å <sup>2</sup> )	13.0	Xtriage
Anisotropy	0.032	Xtriage
Bulk solvent $k_{sol}$ (e/Å <sup>3</sup> ), $B_{sol}$ (Å <sup>2</sup> )	0.42 , 49.1	EDS
Estimated twinning fraction	0.079 for h,-k,-l	Xtriage
L-test for twinning	$\langle  L  \rangle = 0.49$ , $\langle L^2 \rangle = 0.32$	Xtriage
Outliers	0 of 69156 reflections	Xtriage
$F_o, F_c$ correlation	0.97	EDS
Total number of atoms	8081	wwPDB-VP
Average B, all atoms (Å <sup>2</sup> )	17.0	wwPDB-VP

Xtriage's analysis on translational NCS is as follows: *The largest off-origin peak in the Patterson function is 6.29% of the height of the origin peak. No significant pseudotranslation is detected.*

<sup>1</sup>Intensities estimated from amplitudes.

## 5 Model quality ⓘ

### 5.1 Standard geometry ⓘ

Bond lengths and bond angles in the following residue types are not validated in this section: CL, GDS, CD

The Z score for a bond length (or angle) is the number of standard deviations the observed value is removed from the expected value. A bond length (or angle) with  $|Z| > 5$  is considered an outlier worth inspection. RMSZ is the root-mean-square of all Z scores of the bond lengths (or angles).

Mol	Chain	Bond lengths		Bond angles	
		RMSZ	$\# Z  > 5$	RMSZ	$\# Z  > 5$
1	A	0.81	1/1935 (0.1%)	0.93	5/2626 (0.2%)
1	B	0.77	3/1903 (0.2%)	0.82	2/2589 (0.1%)
All	All	0.79	4/3838 (0.1%)	0.87	7/5215 (0.1%)

All (4) bond length outliers are listed below:

Mol	Chain	Res	Type	Atoms	Z	Observed(Å)	Ideal(Å)
1	B	100	ASP	CG-OD2	9.79	1.47	1.25
1	A	100	ASP	CG-OD2	9.15	1.46	1.25
1	B	100	ASP	CA-CB	5.95	1.67	1.53
1	B	143	GLU	CB-CG	5.09	1.61	1.52

The worst 5 of 7 bond angle outliers are listed below:

Mol	Chain	Res	Type	Atoms	Z	Observed(°)	Ideal(°)
1	A	100	ASP	CB-CG-OD1	-15.91	103.98	118.30
1	A	100	ASP	CB-CG-OD2	13.94	130.85	118.30
1	B	100	ASP	CB-CG-OD1	-11.80	107.68	118.30
1	B	100	ASP	CB-CG-OD2	10.99	128.19	118.30
1	A	40	ASP	CB-CG-OD2	6.00	123.70	118.30

There are no chirality outliers.

There are no planarity outliers.

### 5.2 Close contacts ⓘ

In the following table, the Non-H and H(model) columns list the number of non-hydrogen atoms and hydrogen atoms in the chain respectively. The H(added) column lists the number of hydrogens added by MolProbity. The Clashes column lists the number of clashes within the asymmetric unit,



and the number in parentheses is this value normalized per 1000 atoms of the molecule in the chain. The Symm-Clashes column gives symmetry related clashes, in the same way as for the Clashes column.

Mol	Chain	Non-H	H(model)	H(added)	Clashes	Symm-Clashes
1	A	1881	1793	0	15	0
1	B	1848	1738	0	9	0
2	A	32	18	2	1	0
2	B	34	20	2	2	0
3	A	22	0	0	0	0
3	B	18	0	0	0	0
4	A	5	0	0	2	0
4	B	1	0	0	0	0
5	A	359	0	0	16	1
5	B	312	0	0	4	1
All	All	4512	3569	4	27	1

Clashscore is defined as the number of clashes calculated for the entry per 1000 atoms (including hydrogens) of the entry. The overall clashscore for this entry is 4.

The worst 5 of 27 close contacts within the same asymmetric unit are listed below.

Atom-1	Atom-2	Distance(Å)	Clash(Å)
1:A:150[B]:ARG:HD3	5:A:2250:HOH:O	1.52	1.08
1:A:150[A]:ARG:HD3	5:A:2250:HOH:O	1.61	1.00
1:A:237:LYS:NZ	5:A:2342:HOH:O	2.00	0.95
4:A:1261:CL:CL	5:A:2351:HOH:O	2.26	0.89
1:A:47:GLN:NE2	5:A:2098:HOH:O	1.84	0.89

All (1) symmetry-related close contacts are listed below. The label for Atom-2 includes the symmetry operator and encoded unit-cell translations to be applied.

Atom-1	Atom-2	Distance(Å)	Clash(Å)
5:A:2072:HOH:O	5:B:2150:HOH:O[1.556]	2.18	0.02

## 5.3 Torsion angles

### 5.3.1 Protein backbone ⓘ

In the following table, the Percentiles column shows the percent Ramachandran outliers of the chain as a percentile score with respect to all X-ray entries followed by that with respect to entries of similar resolution. The Analysed column shows the number of residues for which the backbone conformation was analysed, and the total number of residues.

Mol	Chain	Analysed	Favoured	Allowed	Outliers	Percentiles	
1	A	242/248 (98%)	237 (98%)	4 (2%)	1 (0%)	43	16
1	B	241/248 (97%)	234 (97%)	6 (2%)	1 (0%)	43	16
All	All	483/496 (97%)	471 (98%)	10 (2%)	2 (0%)	43	16

All (2) Ramachandran outliers are listed below:

Mol	Chain	Res	Type
1	B	68	ASN
1	A	68	ASN

### 5.3.2 Protein sidechains ⓘ

In the following table, the Percentiles column shows the percent sidechain outliers of the chain as a percentile score with respect to all X-ray entries followed by that with respect to entries of similar resolution. The Analysed column shows the number of residues for which the sidechain conformation was analysed, and the total number of residues.

Mol	Chain	Analysed	Rotameric	Outliers	Percentiles	
1	A	201/226 (89%)	198 (98%)	3 (2%)	76	46
1	B	191/226 (84%)	190 (100%)	1 (0%)	94	82
All	All	392/452 (87%)	388 (99%)	4 (1%)	85	64

All (4) residues with a non-rotameric sidechain are listed below:

Mol	Chain	Res	Type
1	A	61	ASP
1	A	68	ASN
1	A	177	ASP
1	B	68	ASN

Some sidechains can be flipped to improve hydrogen bonding and reduce clashes. There are no such sidechains identified.

### 5.3.3 RNA ⓘ

There are no RNA chains in this entry.

## 5.4 Non-standard residues in protein, DNA, RNA chains ⓘ

There are no non-standard protein/DNA/RNA residues in this entry.

## 5.5 Carbohydrates ⓘ

There are no carbohydrates in this entry.

## 5.6 Ligand geometry ⓘ

Of 48 ligands modelled in this entry, 46 are monoatomic - leaving 2 for Mogul analysis.

In the following table, the Counts columns list the number of bonds (or angles) for which Mogul statistics could be retrieved, the number of bonds (or angles) that are observed in the model and the number of bonds (or angles) that are defined in the chemical component dictionary. The Link column lists molecule types, if any, to which the group is linked. The Z score for a bond length (or angle) is the number of standard deviations the observed value is removed from the expected value. A bond length (or angle) with  $|Z| > 2$  is considered an outlier worth inspection. RMSZ is the root-mean-square of all Z scores of the bond lengths (or angles).

Mol	Type	Chain	Res	Link	Bond lengths			Bond angles		
					Counts	RMSZ	$\# Z  > 2$	Counts	RMSZ	$\# Z  > 2$
2	GDS	A	500	3	30,31,39	1.77	5 (16%)	38,39,50	2.00	12 (31%)
2	GDS	B	500	3	32,33,39	2.14	7 (21%)	40,42,50	2.07	12 (30%)

In the following table, the Chirals column lists the number of chiral outliers, the number of chiral centers analysed, the number of these observed in the model and the number defined in the chemical component dictionary. Similar counts are reported in the Torsion and Rings columns. '-' means no outliers of that kind were identified.

Mol	Type	Chain	Res	Link	Chirals	Torsions	Rings
2	GDS	A	500	3	1/1/12/16	0/40/40/51	0/0/0/0
2	GDS	B	500	3	1/1/13/16	0/42/42/51	0/0/0/0

The worst 5 of 12 bond length outliers are listed below:

Mol	Chain	Res	Type	Atoms	Z	Observed(Å)	Ideal(Å)
2	B	500	GDS	CD1-N2	6.87	1.45	1.34
2	A	500	GDS	C2-N3	5.42	1.45	1.33
2	B	500	GDS	C2-N3	5.02	1.44	1.33
2	A	500	GDS	C5-N4	4.56	1.43	1.33
2	B	500	GDS	C5-N4	4.51	1.43	1.33

The worst 5 of 24 bond angle outliers are listed below:

Mol	Chain	Res	Type	Atoms	Z	Observed(°)	Ideal(°)
2	B	500	GDS	CB2-CA2-N2	5.58	126.03	110.95
2	A	500	GDS	CB2-CA2-N2	5.08	124.52	110.92
2	B	500	GDS	CA2-N2-CD1	-4.78	113.25	121.84
2	A	500	GDS	O6-CD6-N5	-4.07	116.01	123.08
2	B	500	GDS	O1-CD1-N2	-3.98	115.89	122.26

All (2) chirality outliers are listed below:

Mol	Chain	Res	Type	Atom
2	B	500	GDS	CA2
2	A	500	GDS	CA2

There are no torsion outliers.

There are no ring outliers.

## 5.7 Other polymers ⓘ

There are no such residues in this entry.

## 5.8 Polymer linkage issues

There are no chain breaks in this entry.

## 6 Fit of model and data

### 6.1 Protein, DNA and RNA chains

In the following table, the column labelled ‘#RSRZ> 2’ contains the number (and percentage) of RSRZ outliers, followed by percent RSRZ outliers for the chain as percentile scores relative to all X-ray entries and entries of similar resolution. The OWAB column contains the minimum, median, 95<sup>th</sup> percentile and maximum values of the occupancy-weighted average B-factor per residue. The column labelled ‘Q< 0.9’ lists the number of (and percentage) of residues with an average occupancy less than 0.9.

Mol	Chain	Analysed	<RSRZ>	#RSRZ>2	OWAB(Å <sup>2</sup> )	Q<0.9
1	A	239/248 (96%)	-0.23	2 (0%) 83 86	7, 14, 23, 32	0
1	B	238/248 (95%)	-0.22	2 (0%) 83 86	8, 16, 26, 32	0
All	All	477/496 (96%)	-0.23	4 (0%) 83 86	7, 15, 25, 32	0

All (4) RSRZ outliers are listed below:

Mol	Chain	Res	Type	RSRZ
1	B	5	VAL	3.7
1	A	136	VAL	2.7
1	B	181[A]	VAL	2.2
1	A	98	ASP	2.1

### 6.2 Non-standard residues in protein, DNA, RNA chains

There are no non-standard protein/DNA/RNA residues in this entry.

### 6.3 Carbohydrates

There are no carbohydrates in this entry.

### 6.4 Ligands

In the following table, the Atoms column lists the number of modelled atoms in the group and the number defined in the chemical component dictionary. LLDF column lists the quality of electron density of the group with respect to its neighbouring residues in protein, DNA or RNA chains. The B-factors column lists the minimum, median, 95<sup>th</sup> percentile and maximum values of B factors of atoms in the group. The column labelled ‘Q< 0.9’ lists the number of atoms with occupancy less than 0.9.

Mol	Type	Chain	Res	Atoms	RSR	LLDF	B-factors( $\text{\AA}^2$ )	Q<0.9
3	CD	A	1257	1/1	0.13	1.50	104,104,104,104	1
3	CD	B	1258	1/1	0.12	1.00	19,19,19,19	1
2	GDS	B	500	34/40	0.09	0.95	8,12,32,34	0
3	CD	A	1247	1/1	0.09	0.78	10,10,10,10	1
2	GDS	A	500	32/40	0.09	0.71	7,11,25,30	0
3	CD	A	1249	1/1	0.11	0.62	51,51,51,51	1
3	CD	B	1252	1/1	0.10	0.49	32,32,32,32	1
3	CD	A	1266	1/1	0.10	0.35	29,29,29,29	1
4	CL	A	1260	1/1	0.09	0.32	19,19,19,19	0
3	CD	A	1265	1/1	0.10	0.30	17,17,17,17	1
3	CD	B	1249	1/1	0.09	0.26	31,31,31,31	1
3	CD	B	1246	1/1	0.09	0.10	14,14,14,14	1
3	CD	B	1259	1/1	0.11	0.08	20,20,20,20	1
3	CD	A	1253	1/1	0.08	-0.24	17,17,17,17	1
3	CD	B	1247	1/1	0.08	-0.28	13,13,13,13	1
3	CD	A	1267	1/1	0.11	-0.28	25,25,25,25	1
4	CL	B	1253	1/1	0.07	-0.52	19,19,19,19	0
3	CD	B	1248	1/1	0.07	-0.58	29,29,29,29	1
3	CD	A	1263	1/1	0.09	-0.60	13,13,13,13	1
3	CD	B	1241	1/1	0.06	-0.71	14,14,14,14	0
4	CL	A	1261	1/1	0.06	-0.78	29,29,29,29	0
3	CD	A	1252	1/1	0.07	-0.80	12,12,12,12	1
3	CD	A	1240	1/1	0.05	-0.91	10,10,10,10	1
3	CD	A	1248	1/1	0.08	-0.94	22,22,22,22	1
4	CL	A	1262	1/1	0.07	-1.04	15,15,15,15	0
3	CD	B	1255	1/1	0.08	-1.14	39,39,39,39	1
3	CD	A	1251	1/1	0.07	-1.20	21,21,21,21	1
3	CD	B	1242	1/1	0.05	-1.24	15,15,15,15	0
3	CD	B	1245	1/1	0.08	-1.25	15,15,15,15	1
3	CD	A	1250	1/1	0.06	-1.28	21,21,21,21	1
3	CD	B	1250	1/1	0.07	-1.29	33,33,33,33	1
3	CD	A	1246	1/1	0.07	-1.30	12,12,12,12	1
3	CD	A	1241	1/1	0.04	-1.41	14,14,14,14	1
4	CL	A	1258	1/1	0.04	-1.43	16,16,16,16	0
3	CD	B	1243	1/1	0.04	-1.58	15,15,15,15	1
4	CL	A	1259	1/1	0.04	-1.59	13,13,13,13	0
3	CD	A	1254	1/1	0.07	-1.69	13,13,13,13	1
3	CD	A	1243	1/1	0.04	-1.74	19,19,19,19	1
3	CD	B	1254	1/1	0.04	-1.76	18,18,18,18	1
3	CD	B	1256	1/1	0.04	-1.83	43,43,43,43	1
3	CD	A	1242	1/1	0.03	-2.55	15,15,15,15	1
3	CD	B	1244	1/1	0.02	-3.15	25,25,25,25	1
3	CD	B	1251	1/1	0.04	-3.30	24,24,24,24	1

Continued on next page...

*Continued from previous page...*

Mol	Type	Chain	Res	Atoms	RSR	LLDF	B-factors( $\text{\AA}^2$ )	Q<0.9
3	CD	A	1255	1/1	0.07	-3.39	43,43,43,43	1
3	CD	A	1245	1/1	0.03	-4.67	19,19,19,19	1
3	CD	A	1244	1/1	0.04	-6.01	15,15,15,15	1
3	CD	B	1257	1/1	0.06	-66.47	50,50,50,50	1
3	CD	A	1256	1/1	0.09	-	26,26,26,26	1

## 6.5 Other polymers ⓘ

There are no such residues in this entry.