



Full wwPDB X-ray Structure Validation Report

Feb 27, 2014 – 03:36 PM GMT

PDB ID : 1C1V
Title : RECRUITING ZINC TO MEDIATE POTENT, SPECIFIC INHIBITION OF
SERINE PROTEASES
Authors : Katz, B.A.; Luong, C.
Deposited on : 1999-07-21
Resolution : 1.98 Å(reported)

This is a full wwPDB validation report for a publicly released PDB entry.
We welcome your comments at validation@mail.wwpdb.org
A user guide is available at <http://wwpdb.org/ValidationPDFNotes.html>

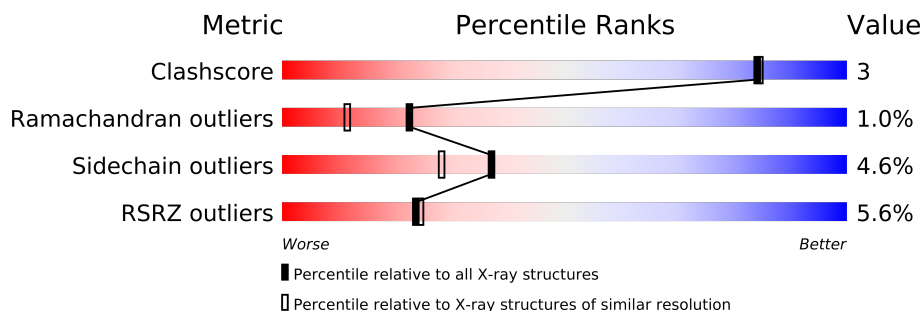
The following versions of software and data (see [references](#)) were used in the production of this report:

MolProbity : 4.02b-467
Mogul : 1.15 2013
Xtriage (Phenix) : dev-1323
EDS : stable22639
Percentile statistics : 21963
Refmac : 5.8.0049
CCP4 : 6.3.0 (Settle)
Ideal geometry (proteins) : Engh & Huber (2001)
Ideal geometry (DNA, RNA) : Parkinson et. al. (1996)
Validation Pipeline (wwPDB-VP) : stable22683

1 Overall quality at a glance




The reported resolution of this entry is 1.98 Å.

Percentile scores (ranging between 0-100) for global validation metrics of the entry are shown in the following graphic. The table shows the number of entries on which the scores are based.



Metric	Whole archive (#Entries)	Similar resolution (#Entries, resolution range(Å))
Clashscore	79885	8091 (2.00-1.96)
Ramachandran outliers	78287	7989 (2.00-1.96)
Sidechain outliers	78261	7987 (2.00-1.96)
RSRZ outliers	66119	6578 (2.00-1.96)

The table below summarises the geometric issues observed across the polymeric chains and their fit to the electron density. The red, orange, yellow and green segments on the lower bar indicate the fraction of residues that contain outliers for ≥ 3 , 2, 1 and 0 types of geometric quality criteria. The upper red bar (where present) indicates the fraction of residues that have poor fit to the electron density.

Mol	Chain	Length	Quality of chain
1	L	36	
2	H	259	
3	I	11	

2 Entry composition

There are 7 unique types of molecules in this entry. The entry contains 5639 atoms, of which 2918 are hydrogens and 0 are deuterium.

In the tables below, the ZeroOcc column contains the number of atoms modelled with zero occupancy, the AltConf column contains the number of residues with at least one atom in alternate conformation and the Trace column contains the number of residues modelled with at most 2 atoms.

- Molecule 1 is a protein called ALPHA THROMBIN.

Mol	Chain	Residues	Atoms						ZeroOcc	AltConf	Trace
1	L	36	Total	C	H	N	O	S	0	0	0
			565	177	278	48	61	1			

- Molecule 2 is a protein called ALPHA THROMBIN.

Mol	Chain	Residues	Atoms						ZeroOcc	AltConf	Trace
2	H	252	Total	C	H	N	O	S	0	0	0
			4052	1299	2013	360	366	14			

- Molecule 3 is a protein called PROTEIN (ACETYL HIRUDIN).

Mol	Chain	Residues	Atoms						ZeroOcc	AltConf	Trace
3	I	11	Total	C	H	N	O	S	0	0	0
			188	64	84	12	27	1			

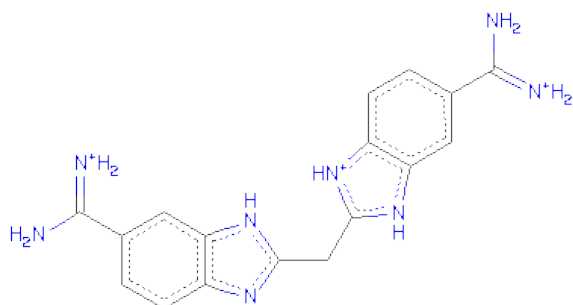
- Molecule 4 is ZINC ION (three-letter code: ZN) (formula: Zn).

Mol	Chain	Residues	Atoms		ZeroOcc	AltConf
4	H	2	Total	Zn	0	0
			2	2		

- Molecule 5 is SODIUM ION (three-letter code: NA) (formula: Na).

Mol	Chain	Residues	Atoms		ZeroOcc	AltConf
5	H	1	Total	Na	0	0
			1	1		

- Molecule 6 is BIS(5-AMIDINO-BENZIMIDAZOLYL)METHANE (three-letter code: BAB) (formula: C₁₇H₁₉N₈).



Mol	Chain	Residues	Atoms				ZeroOcc	AltConf
6	H	1	Total	C	H	N	0	0
			42	17	17	8		

- Molecule 7 is water.

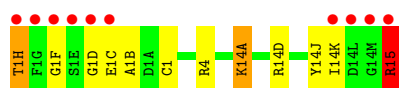
Mol	Chain	Residues	Atoms			ZeroOcc	AltConf
7	H	216	Total	H	O	0	3
			648	432	216		
7	I	12	Total	H	O	0	1
			36	24	12		
7	L	35	Total	H	O	0	1
			105	70	35		

3 Residue-property plots

These plots are drawn for all protein, RNA and DNA chains in the entry. The first graphic for a chain summarises the proportions of errors displayed in the second graphic. The second graphic shows the sequence view annotated by issues in geometry and electron density. Residues are color-coded according to the number of geometric quality criteria for which they contain at least one outlier: green = 0, yellow = 1, orange = 2 and red = 3 or more. A red dot above a residue indicates a poor fit to the electron density ($RSRZ > 2$). Stretches of 2 or more consecutive residues without any outlier are shown as a green connector. Residues present in the sample, but not in the model, are shown in grey.

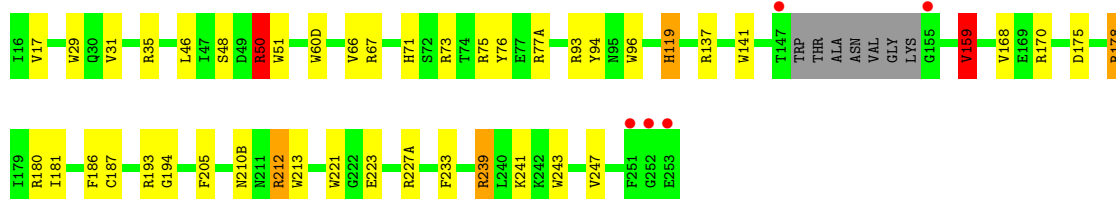
- Molecule 1: ALPHA THROMBIN

Chain L: 



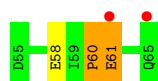
- Molecule 2: ALPHA THROMBIN

Chain H: 



- Molecule 3: PROTEIN (ACETYL HIRUDIN)

Chain I: 



4 Data and refinement statistics

Property	Value	Source
Space group	C 1 2 1	Depositor
Cell constants a, b, c, α , β , γ	72.47Å 72.09Å 73.11Å 90.00° 101.51° 90.00°	Depositor
Resolution (Å)	7.50 – 1.98 35.82 – 1.50	Depositor EDS
% Data completeness (in resolution range)	62.0 (7.50-1.98) 37.7 (35.82-1.50)	Depositor EDS
R_{merge}	0.09	Depositor
R_{sym}	(Not available)	Depositor
$\langle I/\sigma(I) \rangle$ ¹	1.95 (at 1.50Å)	Xtriage
Refinement program	X-PLOR 3.1	Depositor
R, R_{free}	0.204 , 0.248 0.222 , (Not available)	Depositor DCC
R_{free} test set	No test flags present.	DCC
Wilson B-factor (Å ²)	0.5	Xtriage
Anisotropy	4.058	Xtriage
Bulk solvent k_{sol} (e/Å ³), B_{sol} (Å ²)	0.34 , 177.1	EDS
Estimated twinning fraction	No twinning to report.	Xtriage
L-test for twinning	$\langle L \rangle = 0.45$, $\langle L^2 \rangle = 0.27$	Xtriage
Outliers	0 of 22286 reflections	Xtriage
F_o, F_c correlation	0.81	EDS
Total number of atoms	5639	wwPDB-VP
Average B, all atoms (Å ²)	22.0	wwPDB-VP

Xtriage's analysis on translational NCS is as follows: *The largest off-origin peak in the Patterson function is 6.60% of the height of the origin peak. No significant pseudotranslation is detected.*

¹Intensities estimated from amplitudes.

5 Model quality i

5.1 Standard geometry i

Bond lengths and bond angles in the following residue types are not validated in this section: NA, ZN, BAB, TYS

The Z score for a bond length (or angle) is the number of standard deviations the observed value is removed from the expected value. A bond length (or angle) with $|Z| > 5$ is considered an outlier worth inspection. RMSZ is the root-mean-square of all Z scores of the bond lengths (or angles).

Mol	Chain	Bond lengths		Bond angles	
		RMSZ	$\# Z > 5$	RMSZ	$\# Z > 5$
1	L	1.50	0/290	1.39	0/384
2	H	1.41	6/2091 (0.3%)	1.71	50/2823 (1.8%)
3	I	1.54	0/88	1.30	0/115
All	All	1.43	6/2469 (0.2%)	1.66	50/3322 (1.5%)

Chiral center outliers are detected by calculating the chiral volume of a chiral center and verifying if the center is modelled as a planar moiety or with the opposite hand. A planarity outlier is detected by checking planarity of atoms in a peptide group, atoms in a mainchain group or atoms of a sidechain that are expected to be planar.

Mol	Chain	#Chirality outliers	#Planarity outliers
1	L	0	2
2	H	0	10
All	All	0	12

All (6) bond length outliers are listed below:

Mol	Chain	Res	Type	Atoms	Z	Observed(Å)	Ideal(Å)
2	H	223	GLU	CB-CG	5.84	1.63	1.52
2	H	213	TRP	CG-CD2	-5.55	1.34	1.43
2	H	29	TRP	CG-CD2	-5.42	1.34	1.43
2	H	96	TRP	CG-CD2	-5.20	1.34	1.43
2	H	60(D)	TRP	CG-CD2	-5.03	1.35	1.43
2	H	186	PHE	CA-CB	5.01	1.65	1.53

All (50) bond angle outliers are listed below:

Mol	Chain	Res	Type	Atoms	Z	Observed(°)	Ideal(°)
2	H	243	TRP	CD1-NE1-CE2	10.50	118.45	109.00
2	H	60(D)	TRP	CD1-NE1-CE2	9.94	117.94	109.00

Continued on next page...

Continued from previous page...

Mol	Chain	Res	Type	Atoms	Z	Observed(°)	Ideal(°)
2	H	141	TRP	CD1-NE1-CE2	9.85	117.86	109.00
2	H	221	TRP	CD1-NE1-CE2	9.51	117.56	109.00
2	H	60(D)	TRP	NE1-CE2-CZ2	9.02	140.32	130.40
2	H	96	TRP	CD1-NE1-CE2	8.85	116.97	109.00
2	H	213	TRP	NE1-CE2-CZ2	8.54	139.79	130.40
2	H	51	TRP	CD1-NE1-CE2	8.41	116.57	109.00
2	H	213	TRP	CD1-NE1-CE2	8.29	116.47	109.00
2	H	29	TRP	CD1-NE1-CE2	8.20	116.38	109.00
2	H	29	TRP	NE1-CE2-CZ2	8.07	139.27	130.40
2	H	60(D)	TRP	CG-CD1-NE1	-7.85	102.25	110.10
2	H	96	TRP	NE1-CE2-CZ2	7.65	138.81	130.40
2	H	51	TRP	NE1-CE2-CZ2	7.46	138.60	130.40
2	H	243	TRP	CG-CD1-NE1	-7.27	102.83	110.10
2	H	29	TRP	CG-CD1-NE1	-7.21	102.89	110.10
2	H	170	ARG	NE-CZ-NH2	-7.16	116.72	120.30
2	H	141	TRP	CG-CD1-NE1	-7.09	103.00	110.10
2	H	141	TRP	NE1-CE2-CZ2	6.95	138.04	130.40
2	H	243	TRP	NE1-CE2-CD2	-6.90	100.40	107.30
2	H	212	ARG	NE-CZ-NH2	-6.86	116.87	120.30
2	H	96	TRP	CG-CD1-NE1	-6.83	103.27	110.10
2	H	60(D)	TRP	NE1-CE2-CD2	-6.81	100.49	107.30
2	H	213	TRP	NE1-CE2-CD2	-6.72	100.58	107.30
2	H	221	TRP	NE1-CE2-CZ2	6.58	137.64	130.40
2	H	205	PHE	N-CA-C	-6.50	93.44	111.00
2	H	50	ARG	NE-CZ-NH2	-6.34	117.13	120.30
2	H	213	TRP	CG-CD1-NE1	-6.30	103.80	110.10
2	H	243	TRP	NE1-CE2-CZ2	6.23	137.25	130.40
2	H	221	TRP	CG-CD1-NE1	-6.22	103.88	110.10
2	H	141	TRP	NE1-CE2-CD2	-6.17	101.13	107.30
2	H	96	TRP	NE1-CE2-CD2	-5.95	101.35	107.30
2	H	119	HIS	CA-CB-CG	-5.84	103.67	113.60
2	H	67	ARG	NE-CZ-NH2	-5.83	117.39	120.30
2	H	51	TRP	NE1-CE2-CD2	-5.81	101.49	107.30
2	H	213	TRP	CG-CD2-CE3	-5.80	128.68	133.90
2	H	221	TRP	NE1-CE2-CD2	-5.78	101.52	107.30
2	H	29	TRP	CD1-CG-CD2	5.76	110.91	106.30
2	H	51	TRP	CG-CD1-NE1	-5.73	104.37	110.10
2	H	73	ARG	NE-CZ-NH2	-5.70	117.45	120.30
2	H	29	TRP	NE1-CE2-CD2	-5.70	101.60	107.30
2	H	29	TRP	CB-CG-CD2	-5.58	119.34	126.60
2	H	178	ARG	NE-CZ-NH2	-5.50	117.55	120.30
2	H	60(D)	TRP	CG-CD2-CE3	-5.49	128.96	133.90

Continued on next page...

Continued from previous page...

Mol	Chain	Res	Type	Atoms	Z	Observed(°)	Ideal(°)
2	H	137	ARG	NE-CZ-NH2	-5.38	117.61	120.30
2	H	76	TYR	CB-CG-CD2	-5.28	117.83	121.00
2	H	77(A)	ARG	NE-CZ-NH2	-5.25	117.67	120.30
2	H	159	VAL	N-CA-CB	-5.22	100.00	111.50
2	H	239	ARG	NE-CZ-NH2	-5.09	117.75	120.30
2	H	175	ASP	CB-CG-OD2	-5.07	113.74	118.30

There are no chirality outliers.

All (12) planarity outliers are listed below:

Mol	Chain	Res	Type	Group
2	H	178	ARG	Sidechain
2	H	180	ARG	Sidechain
2	H	193	ARG	Sidechain
2	H	212	ARG	Sidechain
2	H	227(A)	ARG	Sidechain
2	H	239	ARG	Sidechain
2	H	35	ARG	Sidechain
2	H	50	ARG	Sidechain
2	H	75	ARG	Sidechain
2	H	93	ARG	Sidechain
1	L	15	ARG	Sidechain
1	L	4	ARG	Sidechain

5.2 Close contacts ⓘ

In the following table, the Non-H and H(model) columns list the number of non-hydrogen atoms and hydrogen atoms in the chain respectively. The H(added) column lists the number of hydrogens added by MolProbity. The Clashes column lists the number of clashes within the asymmetric unit, and the number in parentheses is this value normalized per 1000 atoms of the molecule in the chain. The Symm-Clashes column gives symmetry related clashes, in the same way as for the Clashes column.

Mol	Chain	Non-H	H(model)	H(added)	Clashes	Symm-Clashes
1	L	287	278	0	7	0
2	H	2039	2013	1	7	0
3	I	104	84	1	2	0
4	H	2	0	0	0	0
5	H	1	0	0	0	0
6	H	25	17	2	0	0
7	H	216	432	0	0	0

Continued on next page...

Continued from previous page...

Mol	Chain	Non-H	H(model)	H(added)	Clashes	Symm-Clashes
7	I	12	24	0	0	0
7	L	35	70	0	0	0
All	All	2721	2918	4	14	0

Clashscore is defined as the number of clashes calculated for the entry per 1000 atoms (including hydrogens) of the entry. The overall clashscore for this entry is 3.

All (14) close contacts within the same asymmetric unit are listed below.

Atom-1	Atom-2	Distance(Å)	Clash(Å)
1:L:1(D):GLY:HA3	1:L:1:CYS:SG	2.27	0.74
2:H:168:VAL:HB	2:H:187:CYS:SG	2.35	0.67
2:H:31:VAL:CG1	2:H:66:VAL:HG11	2.40	0.52
3:I:58:GLU:H	3:I:58:GLU:CD	2.15	0.50
1:L:1(F):GLY:HA2	2:H:241:LYS:NZ	2.30	0.46
2:H:17:VAL:O	2:H:194:GLY:HA2	2.17	0.45
1:L:14(A):LYS:HB2	1:L:14(A):LYS:NZ	2.31	0.44
1:L:1(H):THR:HG21	2:H:48:SER:HB3	1.99	0.42
3:I:60:PRO:O	3:I:61:GLU:C	2.58	0.42
1:L:1(H):THR:N	1:L:1(D):GLY:O	2.44	0.42
2:H:71:HIS:CD2	2:H:159:VAL:HG22	2.55	0.41
1:L:14(J):TYR:C	1:L:14(K):ILE:HG12	2.39	0.41
2:H:181:ILE:HD12	2:H:233:PHE:CE2	2.56	0.41
1:L:15:ARG:HD3	1:L:15:ARG:C	2.41	0.40

There are no symmetry-related clashes.

5.3 Torsion angles

5.3.1 Protein backbone ⓘ

In the following table, the Percentiles column shows the percent Ramachandran outliers of the chain as a percentile score with respect to all X-ray entries followed by that with respect to entries of similar resolution. The Analysed column shows the number of residues for which the backbone conformation was analysed, and the total number of residues.

Mol	Chain	Analysed	Favoured	Allowed	Outliers	Percentiles	
1	L	34/36 (94%)	21 (62%)	12 (35%)	1 (3%)	7	1
2	H	248/259 (96%)	226 (91%)	22 (9%)	0	100	100
3	I	8/11 (73%)	4 (50%)	2 (25%)	2 (25%)	0	0
All	All	290/306 (95%)	251 (87%)	36 (12%)	3 (1%)	22	11

All (3) Ramachandran outliers are listed below:

Mol	Chain	Res	Type
1	L	1(B)	ALA
3	I	61	GLU
3	I	60	PRO

5.3.2 Protein sidechains ⓘ

In the following table, the Percentiles column shows the percent sidechain outliers of the chain as a percentile score with respect to all X-ray entries followed by that with respect to entries of similar resolution. The Analysed column shows the number of residues for which the sidechain conformation was analysed, and the total number of residues.

Mol	Chain	Analysed	Rotameric	Outliers	Percentiles	
1	L	31/31 (100%)	26 (84%)	5 (16%)	3	1
2	H	220/225 (98%)	213 (97%)	7 (3%)	51	45
3	I	10/10 (100%)	10 (100%)	0	100	100
All	All	261/266 (98%)	249 (95%)	12 (5%)	37	28

All (12) residues with a non-rotameric sidechain are listed below:

Mol	Chain	Res	Type
1	L	1(H)	THR
1	L	1(C)	GLU
1	L	14(A)	LYS
1	L	14(D)	ARG
1	L	15	ARG
2	H	46	LEU
2	H	50	ARG
2	H	94	TYR
2	H	119	HIS
2	H	159	VAL
2	H	210(B)	ASN
2	H	247	VAL

Some sidechains can be flipped to improve hydrogen bonding and reduce clashes. All (4) such sidechains are listed below:

Mol	Chain	Res	Type
2	H	131	GLN
2	H	161	GLN
2	H	210(B)	ASN

Continued on next page...

Continued from previous page...

Mol	Chain	Res	Type
3	I	65	GLN

5.3.3 RNA ⓘ

There are no RNA chains in this entry.

5.4 Non-standard residues in protein, DNA, RNA chains ⓘ

1 non-standard protein/DNA/RNA residue is modelled in this entry.

In the following table, the Counts columns list the number of bonds (or angles) for which Mogul statistics could be retrieved, the number of bonds (or angles) that are observed in the model and the number of bonds (or angles) that are defined in the chemical component dictionary. The Link column lists molecule types, if any, to which the group is linked. The Z score for a bond length (or angle) is the number of standard deviations the observed value is removed from the expected value. A bond length (or angle) with $|Z| > 2$ is considered an outlier worth inspection. RMSZ is the root-mean-square of all Z scores of the bond lengths (or angles).

Mol	Type	Chain	Res	Link	Bond lengths			Bond angles		
					Counts	RMSZ	$\# Z > 2$	Counts	RMSZ	$\# Z > 2$
3	TYS	I	63	3	16,16,17	4.14	3 (18%)	20,22,24	1.49	3 (15%)

In the following table, the Chirals column lists the number of chiral outliers, the number of chiral centers analysed, the number of these observed in the model and the number defined in the chemical component dictionary. Similar counts are reported in the Torsion and Rings columns. '-' means no outliers of that kind were identified.

Mol	Type	Chain	Res	Link	Chirals	Torsions	Rings
3	TYS	I	63	3	-	0/9/11/13	0/1/1/1

All (3) bond length outliers are listed below:

Mol	Chain	Res	Type	Atoms	Z	Observed(Å)	Ideal(Å)
3	I	63	TYS	O-C	15.89	1.22	1.11
3	I	63	TYS	OH-CZ	-3.41	1.38	1.42
3	I	63	TYS	CA-C	2.33	1.52	1.48

All (3) bond angle outliers are listed below:

Mol	Chain	Res	Type	Atoms	Z	Observed(°)	Ideal(°)
3	I	63	TYS	CZ-OH-S	-4.58	112.11	118.98

Continued on next page...

Continued from previous page...

Mol	Chain	Res	Type	Atoms	Z	Observed(°)	Ideal(°)
3	I	63	TYS	CG-CB-CA	-2.42	108.71	114.42
3	I	63	TYS	OH-S-O1	2.10	113.70	107.64

There are no chirality outliers.

There are no torsion outliers.

There are no ring outliers.

5.5 Carbohydrates ⓘ

There are no carbohydrates in this entry.

5.6 Ligand geometry ⓘ

Of 4 ligands modelled in this entry, 3 are monoatomic - leaving 1 for Mogul analysis.

In the following table, the Counts columns list the number of bonds (or angles) for which Mogul statistics could be retrieved, the number of bonds (or angles) that are observed in the model and the number of bonds (or angles) that are defined in the chemical component dictionary. The Link column lists molecule types, if any, to which the group is linked. The Z score for a bond length (or angle) is the number of standard deviations the observed value is removed from the expected value. A bond length (or angle) with $|Z| > 2$ is considered an outlier worth inspection. RMSZ is the root-mean-square of all Z scores of the bond lengths (or angles).

Mol	Type	Chain	Res	Link	Bond lengths			Bond angles		
					Counts	RMSZ	$\# Z > 2$	Counts	RMSZ	$\# Z > 2$
6	BAB	H	410	4	28,28,28	3.28	10 (35%)	41,41,41	2.12	11 (26%)

In the following table, the Chirals column lists the number of chiral outliers, the number of chiral centers analysed, the number of these observed in the model and the number defined in the chemical component dictionary. Similar counts are reported in the Torsion and Rings columns. '-' means no outliers of that kind were identified.

Mol	Type	Chain	Res	Link	Chirals	Torsions	Rings
6	BAB	H	410	4	-	0/10/12/12	0/0/4/4

All (10) bond length outliers are listed below:

Mol	Chain	Res	Type	Atoms	Z	Observed(Å)	Ideal(Å)
6	H	410	BAB	C1-C7	-11.36	1.37	1.48
6	H	410	BAB	C1'-C7'	-8.70	1.40	1.48

Continued on next page...

Continued from previous page...

Mol	Chain	Res	Type	Atoms	Z	Observed(Å)	Ideal(Å)
6	H	410	BAB	C9-C8	4.94	1.60	1.49
6	H	410	BAB	C6'-C1'	3.59	1.43	1.37
6	H	410	BAB	C3-C2	2.76	1.42	1.36
6	H	410	BAB	C5-C4	-2.70	1.34	1.42
6	H	410	BAB	C2'-C1'	2.21	1.43	1.39
6	H	410	BAB	C9-C8'	2.09	1.54	1.50
6	H	410	BAB	C4-N3	-2.00	1.31	1.38
6	H	410	BAB	C5'-C4'	-2.01	1.36	1.39

All (11) bond angle outliers are listed below:

Mol	Chain	Res	Type	Atoms	Z	Observed(°)	Ideal(°)
6	H	410	BAB	C1-C7-N1	-5.80	115.66	119.83
6	H	410	BAB	C2-C1-C7	5.48	124.56	120.39
6	H	410	BAB	C4-C5-N4	4.85	109.95	105.89
6	H	410	BAB	C9-C8'-N4'	3.85	131.86	123.37
6	H	410	BAB	C2-C3-C4	-3.66	116.63	120.92
6	H	410	BAB	C9-C8'-N3'	-3.13	116.47	123.37
6	H	410	BAB	C6-C1-C7	-3.02	116.53	120.10
6	H	410	BAB	C2'-C3'-C4'	-2.60	115.92	119.38
6	H	410	BAB	N2-C7-N1	2.35	123.82	120.65
6	H	410	BAB	C5'-C4'-N3'	2.24	109.18	106.34
6	H	410	BAB	C6'-C1'-C7'	2.13	122.62	120.10

There are no chirality outliers.

There are no torsion outliers.

There are no ring outliers.

5.7 Other polymers ⓘ

There are no such residues in this entry.

5.8 Polymer linkage issues

There are no chain breaks in this entry.

6 Fit of model and data ⓘ

6.1 Protein, DNA and RNA chains ⓘ

In the following table, the column labelled ‘#RSRZ> 2’ contains the number (and percentage) of RSRZ outliers, followed by percent RSRZ outliers for the chain as percentile scores relative to all X-ray entries and entries of similar resolution. The OWAB column contains the minimum, median, 95th percentile and maximum values of the occupancy-weighted average B-factor per residue. The column labelled ‘Q< 0.9’ lists the number of (and percentage) of residues with an average occupancy less than 0.9.

Mol	Chain	Analysed	<RSRZ>	#RSRZ>2	OWAB(Å ²)	Q<0.9
1	L	36/36 (100%)	1.54	10 (27%) 1 1	4, 21, 52, 55	12 (33%)
2	H	252/259 (97%)	-0.08	5 (1%) 62 64	2, 15, 38, 65	26 (10%)
3	I	11/11 (100%)	1.02	2 (18%) 2 2	26, 38, 49, 55	6 (54%)
All	All	299/306 (97%)	0.16	17 (5%) 24 24	2, 17, 45, 65	44 (14%)

All (17) RSRZ outliers are listed below:

Mol	Chain	Res	Type	RSRZ
2	H	253	GLU	14.1
1	L	1(F)	GLY	10.7
1	L	14(L)	ASP	9.7
1	L	1(G)	PHE	9.5
1	L	1(H)	THR	7.6
3	I	65	GLN	6.5
2	H	147	THR	6.4
1	L	15	ARG	6.1
1	L	1(D)	GLY	5.7
1	L	14(M)	GLY	5.4
1	L	1(E)	SER	4.2
2	H	252	GLY	4.1
1	L	14(K)	ILE	3.6
2	H	251	PHE	3.4
3	I	61	GLU	2.8
1	L	1(C)	GLU	2.6
2	H	155	GLY	2.0

6.2 Non-standard residues in protein, DNA, RNA chains ⓘ

In the following table, the Atoms column lists the number of modelled atoms in the group and the number defined in the chemical component dictionary. LLDF column lists the quality of electron

density of the group with respect to its neighbouring residues in protein, DNA or RNA chains. The B-factors column lists the minimum, median, 95th percentile and maximum values of B factors of atoms in the group. The column labelled 'Q< 0.9' lists the number of atoms with occupancy less than 0.9.

Mol	Type	Chain	Res	Atoms	RSR	LLDF	B-factors(Å ²)	Q<0.9
3	TYS	I	63	16/17	0.09	-	28,33,39,42	0

6.3 Carbohydrates

There are no carbohydrates in this entry.

6.4 Ligands

In the following table, the Atoms column lists the number of modelled atoms in the group and the number defined in the chemical component dictionary. LLDF column lists the quality of electron density of the group with respect to its neighbouring residues in protein, DNA or RNA chains. The B-factors column lists the minimum, median, 95th percentile and maximum values of B factors of atoms in the group. The column labelled 'Q< 0.9' lists the number of atoms with occupancy less than 0.9.

Mol	Type	Chain	Res	Atoms	RSR	LLDF	B-factors(Å ²)	Q<0.9
6	BAB	H	410	25/25	0.14	-	10,30,44,46	14
5	NA	H	409	1/1	0.05	-	39,39,39,39	0
4	ZN	H	254	1/1	0.10	-	2,2,2,2	0
4	ZN	H	255	1/1	0.16	-	68,68,68,68	0

6.5 Other polymers

There are no such residues in this entry.