



# wwPDB X-ray Structure Validation Summary Report

Feb 26, 2014 – 07:23 PM GMT

PDB ID : 2C1D  
Title : CRYSTAL STRUCTURE OF SOXXA FROM P. PANTOTROPHUS  
Authors : Dambe, T.; Quentmeier, A.; Rother, D.; Friedrich, C.; Scheidig, A.J.  
Deposited on : 2005-09-13  
Resolution : 1.92 Å(reported)

This is a wwPDB validation summary report for a publicly released PDB entry.

We welcome your comments at [validation@mail.wwpdb.org](mailto:validation@mail.wwpdb.org)

A user guide is available at <http://wwpdb.org/ValidationPDFNotes.html>

---

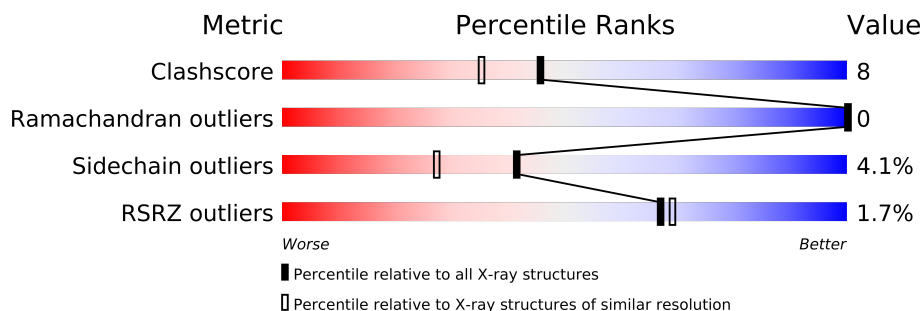
The following versions of software and data (see [references](#)) were used in the production of this report:

MolProbity : 4.02b-467  
Mogul : 1.15 2013  
Xtriage (Phenix) : dev-1323  
EDS : stable22639  
Percentile statistics : 21963  
Refmac : 5.8.0049  
CCP4 : 6.3.0 (Settle)  
Ideal geometry (proteins) : Engh & Huber (2001)  
Ideal geometry (DNA, RNA) : Parkinson et. al. (1996)  
Validation Pipeline (wwPDB-VP) : stable22683

# 1 Overall quality at a glance

The reported resolution of this entry is 1.92 Å.

Percentile scores (ranging between 0-100) for global validation metrics of the entry are shown in the following graphic. The table shows the number of entries on which the scores are based.



Metric	Whole archive (#Entries)	Similar resolution (#Entries, resolution range(Å))
Clashscore	79885	5258 (1.94-1.90)
Ramachandran outliers	78287	5193 (1.94-1.90)
Sidechain outliers	78261	5194 (1.94-1.90)
RSRZ outliers	66119	4389 (1.94-1.90)

The table below summarises the geometric issues observed across the polymeric chains and their fit to the electron density. The red, orange, yellow and green segments on the lower bar indicate the fraction of residues that contain outliers for  $\geq 3$ , 2, 1 and 0 types of geometric quality criteria. The upper red bar (where present) indicates the fraction of residues that have poor fit to the electron density.

Mol	Chain	Length	Quality of chain
1	A	264	
1	C	264	
1	E	264	
1	G	264	
2	B	137	
2	D	137	
2	F	137	
2	H	137	

## 2 Entry composition

There are 5 unique types of molecules in this entry. The entry contains 14878 atoms, of which 0 are hydrogen and 0 are deuterium.

In the tables below, the ZeroOcc column contains the number of atoms modelled with zero occupancy, the AltConf column contains the number of residues with at least one atom in alternate conformation and the Trace column contains the number of residues modelled with at most 2 atoms.

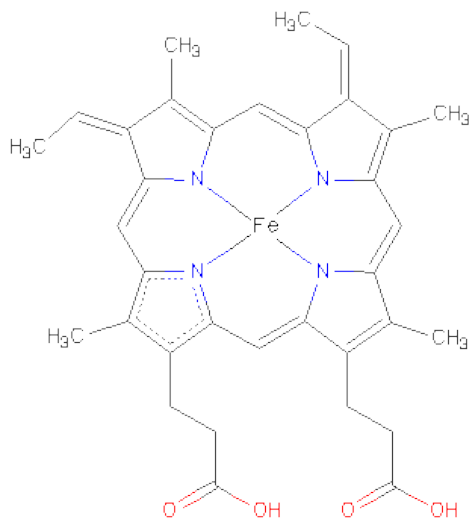
- Molecule 1 is a protein called SOXA.

Mol	Chain	Residues	Atoms					ZeroOcc	AltConf	Trace
1	A	264	Total	C	N	O	S	0	0	0
			2044	1262	359	403	20			
1	C	264	Total	C	N	O	S	0	0	0
			2044	1262	359	403	20			
1	E	264	Total	C	N	O	S	0	0	0
			2044	1262	359	403	20			
1	G	264	Total	C	N	O	S	0	0	0
			2044	1262	359	403	20			

- Molecule 2 is a protein called SOXX.

Mol	Chain	Residues	Atoms					ZeroOcc	AltConf	Trace
2	B	137	Total	C	N	O	S	0	0	0
			1005	638	166	195	6			
2	D	137	Total	C	N	O	S	0	0	0
			1006	638	166	196	6			
2	F	137	Total	C	N	O	S	0	0	0
			1006	638	166	196	6			
2	H	137	Total	C	N	O	S	0	0	0
			1006	638	166	196	6			

- Molecule 3 is HEME C (three-letter code: HEC) (formula:  $C_{34}H_{34}FeN_4O_4$ ).



Mol	Chain	Residues	Atoms					ZeroOcc	AltConf
3	A	1	Total 43	C 34	Fe 1	N 4	O 4	0	0
3	A	1	Total 43	C 34	Fe 1	N 4	O 4	0	0
3	B	1	Total 43	C 34	Fe 1	N 4	O 4	0	0
3	C	1	Total 43	C 34	Fe 1	N 4	O 4	0	0
3	C	1	Total 43	C 34	Fe 1	N 4	O 4	0	0
3	D	1	Total 43	C 34	Fe 1	N 4	O 4	0	0
3	E	1	Total 43	C 34	Fe 1	N 4	O 4	0	0
3	E	1	Total 43	C 34	Fe 1	N 4	O 4	0	0
3	F	1	Total 43	C 34	Fe 1	N 4	O 4	0	0
3	G	1	Total 43	C 34	Fe 1	N 4	O 4	0	0
3	G	1	Total 43	C 34	Fe 1	N 4	O 4	0	0
3	H	1	Total 43	C 34	Fe 1	N 4	O 4	0	0

- Molecule 4 is ZINC ION (three-letter code: ZN) (formula: Zn).

Mol	Chain	Residues	Atoms		ZeroOcc	AltConf
4	G	3	Total 3	Zn 3	0	0
4	A	4	Total 4	Zn 4	0	0
4	C	3	Total 3	Zn 3	0	0
4	E	2	Total 2	Zn 2	0	0

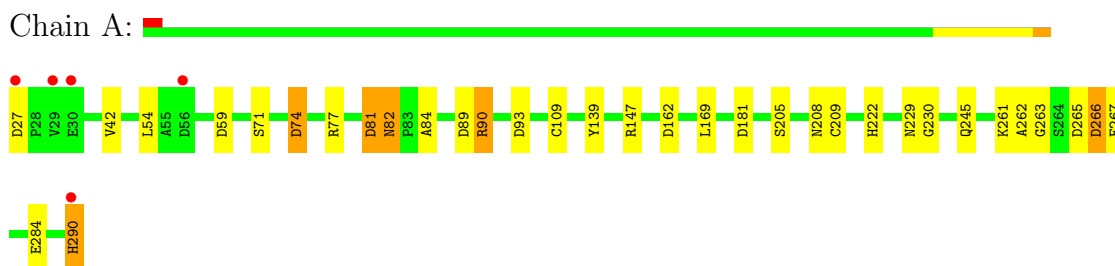
- Molecule 5 is water.

Mol	Chain	Residues	Atoms		ZeroOcc	AltConf
5	A	336	Total 336	O 336	0	0
5	B	176	Total 176	O 176	0	0
5	C	356	Total 356	O 356	0	0
5	D	206	Total 206	O 206	0	0
5	E	350	Total 350	O 350	0	0
5	F	191	Total 191	O 191	0	0
5	G	332	Total 332	O 332	0	0
5	H	204	Total 204	O 204	0	0

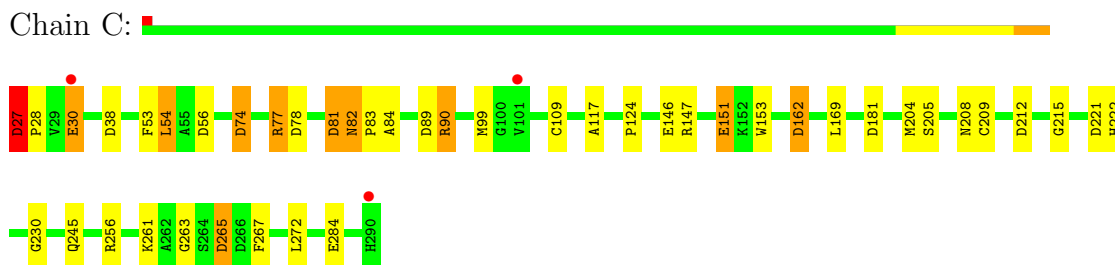
### 3 Residue-property plots

These plots are drawn for all protein, RNA and DNA chains in the entry. The first graphic for a chain summarises the proportions of errors displayed in the second graphic. The second graphic shows the sequence view annotated by issues in geometry and electron density. Residues are color-coded according to the number of geometric quality criteria for which they contain at least one outlier: green = 0, yellow = 1, orange = 2 and red = 3 or more. A red dot above a residue indicates a poor fit to the electron density ( $RSRZ > 2$ ). Stretches of 2 or more consecutive residues without any outlier are shown as a green connector. Residues present in the sample, but not in the model, are shown in grey.

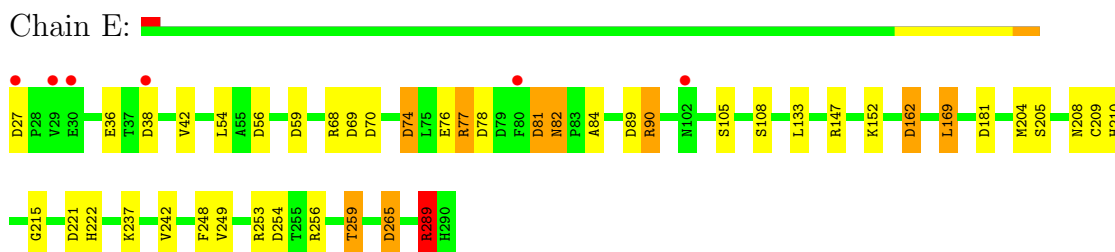
- Molecule 1: SOXA



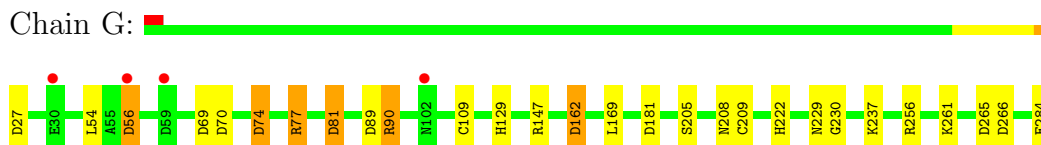
- Molecule 1: SOXA



- Molecule 1: SOXA



- Molecule 1: SOXA



- Molecule 2: SOXX





● Molecule 2: SOXX

Chain D:



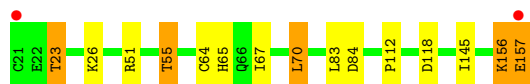
● Molecule 2: SOXX

Chain F:



● Molecule 2: SOXX

Chain H:



## 4 Data and refinement statistics

Property	Value	Source
Space group	P 1 21 1	Depositor
Cell constants a, b, c, $\alpha$ , $\beta$ , $\gamma$	42.86Å 180.01Å 117.93Å 90.00° 92.83° 90.00°	Depositor
Resolution (Å)	119.52 – 1.92 19.52 – 1.92	Depositor EDS
% Data completeness (in resolution range)	93.0 (119.52-1.92) 93.1 (19.52-1.92)	Depositor EDS
$R_{merge}$	0.08	Depositor
$R_{sym}$	(Not available)	Depositor
$\langle I/\sigma(I) \rangle$ <sup>1</sup>	7.71 (at 1.92Å)	Xtriage
Refinement program	REFMAC 5.1.24	Depositor
R, $R_{free}$	0.159 , 0.211 0.174 , (Not available)	Depositor DCC
$R_{free}$ test set	No test flags present.	DCC
Wilson B-factor (Å <sup>2</sup> )	16.9	Xtriage
Anisotropy	0.612	Xtriage
Bulk solvent $k_{sol}$ (e/Å <sup>3</sup> ), $B_{sol}$ (Å <sup>2</sup> )	0.38 , 45.6	EDS
Estimated twinning fraction	0.065 for h,-k,-l	Xtriage
L-test for twinning	$\langle  L  \rangle = 0.52$ , $\langle L^2 \rangle = 0.35$	Xtriage
Outliers	0 of 126865 reflections	Xtriage
$F_o, F_c$ correlation	0.96	EDS
Total number of atoms	14878	wwPDB-VP
Average B, all atoms (Å <sup>2</sup> )	31.0	wwPDB-VP

Xtriage's analysis on translational NCS is as follows: *The analyses of the Patterson function reveals a significant off-origin peak that is 45.43 % of the origin peak, indicating pseudo translational symmetry. The chance of finding a peak of this or larger height randomly in a structure without pseudo translational symmetry is equal to 1.3231e-04. The detected translational NCS is most likely also responsible for the elevated intensity ratio.*

<sup>1</sup>Intensities estimated from amplitudes.



## 5 Model quality

### 5.1 Standard geometry

Bond lengths and bond angles in the following residue types are not validated in this section: ZN, CSS, HEC

The Z score for a bond length (or angle) is the number of standard deviations the observed value is removed from the expected value. A bond length (or angle) with  $|Z| > 5$  is considered an outlier worth inspection. RMSZ is the root-mean-square of all Z scores of the bond lengths (or angles).

Mol	Chain	Bond lengths		Bond angles	
		RMSZ	$\# Z  > 5$	RMSZ	$\# Z  > 5$
1	A	0.64	0/2078	0.95	13/2807 (0.5%)
1	C	0.64	0/2078	0.95	16/2807 (0.6%)
1	E	0.66	0/2078	1.00	19/2807 (0.7%)
1	G	0.62	0/2078	0.92	15/2807 (0.5%)
2	B	0.62	0/1027	0.81	1/1400 (0.1%)
2	D	0.65	0/1028	0.81	1/1400 (0.1%)
2	F	0.62	0/1028	0.77	1/1400 (0.1%)
2	H	0.66	0/1028	0.82	1/1400 (0.1%)
All	All	0.64	0/12423	0.91	67/16828 (0.4%)

Chiral center outliers are detected by calculating the chiral volume of a chiral center and verifying if the center is modelled as a planar moiety or with the opposite hand. A planarity outlier is detected by checking planarity of atoms in a peptide group, atoms in a mainchain group or atoms of a sidechain that are expected to be planar.

Mol	Chain	#Chirality outliers	#Planarity outliers
2	D	0	1
2	H	0	1
All	All	0	2

There are no bond length outliers.

The worst 5 of 67 bond angle outliers are listed below:

Mol	Chain	Res	Type	Atoms	Z	Observed(°)	Ideal(°)
1	E	289	ARG	NE-CZ-NH2	-13.05	113.78	120.30
1	G	77	ARG	NE-CZ-NH2	-10.15	115.22	120.30
1	A	266	ASP	CB-CG-OD1	9.64	126.98	118.30
1	E	77	ARG	NE-CZ-NH2	-9.46	115.57	120.30
1	C	77	ARG	NE-CZ-NH2	-9.18	115.71	120.30

There are no chirality outliers.

All (2) planarity outliers are listed below:

Mol	Chain	Res	Type	Group
2	D	21	CYS	Peptide
2	H	156	LYS	Peptide

## 5.2 Close contacts

In the following table, the Non-H and H(model) columns list the number of non-hydrogen atoms and hydrogen atoms in the chain respectively. The H(added) column lists the number of hydrogens added by MolProbity. The Clashes column lists the number of clashes within the asymmetric unit, and the number in parentheses is this value normalized per 1000 atoms of the molecule in the chain. The Symm-Clashes column gives symmetry related clashes, in the same way as for the Clashes column.

Mol	Chain	Non-H	H(model)	H(added)	Clashes	Symm-Clashes
1	A	2044	0	1935	29	1
1	C	2044	0	1935	43	1
1	E	2044	0	1934	29	1
1	G	2044	0	1935	21	1
2	B	1005	0	983	19	0
2	D	1006	0	983	18	0
2	F	1006	0	983	15	0
2	H	1006	0	983	14	0
3	A	86	0	62	13	0
3	B	43	0	31	8	0
3	C	86	0	62	12	0
3	D	43	0	31	9	0
3	E	86	0	61	7	0
3	F	43	0	31	11	0
3	G	86	0	62	10	0
3	H	43	0	31	8	0
4	A	4	0	0	0	0
4	C	3	0	0	0	0
4	E	2	0	0	0	0
4	G	3	0	0	0	0
5	A	336	0	0	3	0
5	B	176	0	0	5	0
5	C	356	0	0	6	0
5	D	206	0	0	2	0
5	E	350	0	0	1	0
5	F	191	0	0	6	0
5	G	332	0	0	2	0

*Continued on next page...*

*Continued from previous page...*

Mol	Chain	Non-H	H(model)	H(added)	Clashes	Symm-Clashes
5	H	204	0	0	1	0
All	All	14878	0	12042	206	4

Clashscore is defined as the number of clashes calculated for the entry per 1000 atoms (including hydrogens) of the entry. The overall clashscore for this entry is 8.

The worst 5 of 206 close contacts within the same asymmetric unit are listed below.

Atom-1	Atom-2	Distance(Å)	Clash(Å)
2:F:64:CYS:SG	3:F:1158:HEC:CAC	2.10	1.39
2:D:64:CYS:SG	3:D:1158:HEC:CAC	2.13	1.36
2:H:64:CYS:SG	3:H:1158:HEC:CAC	2.16	1.34
1:C:109:CYS:SG	3:C:1291:HEC:CAC	2.16	1.32
2:B:64:CYS:SG	3:B:1158:HEC:CAC	2.20	1.30

All (4) symmetry-related close contacts are listed below. The label for Atom-2 includes the symmetry operator and encoded unit-cell translations to be applied.

Atom-1	Atom-2	Distance(Å)	Clash(Å)
1:C:81:ASP:OD2	1:C:265:ASP:OD2[1_455]	2.08	0.12
1:A:74:ASP:OD1	1:A:266:ASP:OD1[1_655]	2.10	0.10
1:G:81:ASP:OD2	1:G:265:ASP:OD1[1_655]	2.11	0.09
1:E:81:ASP:OD2	1:E:265:ASP:OD2[1_455]	2.12	0.08

## 5.3 Torsion angles

### 5.3.1 Protein backbone ⓘ

In the following table, the Percentiles column shows the percent Ramachandran outliers of the chain as a percentile score with respect to all X-ray entries followed by that with respect to entries of similar resolution. The Analysed column shows the number of residues for which the backbone conformation was analysed, and the total number of residues.

Mol	Chain	Analysed	Favoured	Allowed	Outliers	Percentiles	
1	A	261/264 (99%)	256 (98%)	5 (2%)	0	100	100
1	C	261/264 (99%)	255 (98%)	6 (2%)	0	100	100
1	E	261/264 (99%)	256 (98%)	5 (2%)	0	100	100
1	G	261/264 (99%)	256 (98%)	5 (2%)	0	100	100
2	B	135/137 (98%)	132 (98%)	3 (2%)	0	100	100
2	D	135/137 (98%)	132 (98%)	3 (2%)	0	100	100

*Continued on next page...*

*Continued from previous page...*

Mol	Chain	Analysed	Favoured	Allowed	Outliers	Percentiles	
2	F	135/137 (98%)	131 (97%)	4 (3%)	0	100	100
2	H	135/137 (98%)	131 (97%)	4 (3%)	0	100	100
All	All	1584/1604 (99%)	1549 (98%)	35 (2%)	0	100	100

There are no Ramachandran outliers to report.

### 5.3.2 Protein sidechains ⓘ

In the following table, the Percentiles column shows the percent sidechain outliers of the chain as a percentile score with respect to all X-ray entries followed by that with respect to entries of similar resolution. The Analysed column shows the number of residues for which the sidechain conformation was analysed, and the total number of residues.

Mol	Chain	Analysed	Rotameric	Outliers	Percentiles	
1	A	218/218 (100%)	212 (97%)	6 (3%)	56	44
1	C	218/218 (100%)	211 (97%)	7 (3%)	51	38
1	E	218/218 (100%)	207 (95%)	11 (5%)	34	19
1	G	218/218 (100%)	212 (97%)	6 (3%)	56	44
2	B	103/103 (100%)	95 (92%)	8 (8%)	18	7
2	D	103/103 (100%)	98 (95%)	5 (5%)	35	20
2	F	103/103 (100%)	98 (95%)	5 (5%)	35	20
2	H	103/103 (100%)	98 (95%)	5 (5%)	35	20
All	All	1284/1284 (100%)	1231 (96%)	53 (4%)	41	27

5 of 53 residues with a non-rotameric sidechain are listed below:

Mol	Chain	Res	Type
2	D	45	ASN
1	E	89	ASP
2	H	23	THR
2	D	70	LEU
1	E	42	VAL

Some sidechains can be flipped to improve hydrogen bonding and reduce clashes. 5 of 27 such sidechains are listed below:

Mol	Chain	Res	Type
1	C	245	GLN

*Continued on next page...*

*Continued from previous page...*

Mol	Chain	Res	Type
2	D	143	GLN
1	G	229	ASN
2	D	45	ASN
1	A	245	GLN

### 5.3.3 RNA ⓘ

There are no RNA chains in this entry.

## 5.4 Non-standard residues in protein, DNA, RNA chains ⓘ

4 non-standard protein/DNA/RNA residues are modelled in this entry.

In the following table, the Counts columns list the number of bonds (or angles) for which Mogul statistics could be retrieved, the number of bonds (or angles) that are observed in the model and the number of bonds (or angles) that are defined in the chemical component dictionary. The Link column lists molecule types, if any, to which the group is linked. The Z score for a bond length (or angle) is the number of standard deviations the observed value is removed from the expected value. A bond length (or angle) with  $|Z| > 2$  is considered an outlier worth inspection. RMSZ is the root-mean-square of all Z scores of the bond lengths (or angles).

Mol	Type	Chain	Res	Link	Bond lengths			Bond angles		
					Counts	RMSZ	$\# Z  > 2$	Counts	RMSZ	$\# Z  > 2$
1	CSS	A	251	1,3	5,6,7	8.17	2 (40%)	4,6,8	0.54	0
1	CSS	C	251	1,3	5,6,7	7.74	2 (40%)	4,6,8	1.69	1 (25%)
1	CSS	E	251	1,3	5,6,7	7.05	1 (20%)	4,6,8	1.10	0
1	CSS	G	251	1,3	5,6,7	6.48	2 (40%)	4,6,8	0.57	0

In the following table, the Chirals column lists the number of chiral outliers, the number of chiral centers analysed, the number of these observed in the model and the number defined in the chemical component dictionary. Similar counts are reported in the Torsion and Rings columns. '-' means no outliers of that kind were identified.

Mol	Type	Chain	Res	Link	Chirals	Torsions	Rings
1	CSS	A	251	1,3	-	0/2/5/7	0/0/0/0
1	CSS	C	251	1,3	-	0/2/5/7	0/0/0/0
1	CSS	E	251	1,3	-	0/2/5/7	0/0/0/0
1	CSS	G	251	1,3	-	0/2/5/7	0/0/0/0

The worst 5 of 7 bond length outliers are listed below:

Mol	Chain	Res	Type	Atoms	Z	Observed(Å)	Ideal(Å)
1	A	251	CSS	O-C	18.12	1.23	1.11
1	C	251	CSS	O-C	17.10	1.23	1.11
1	E	251	CSS	O-C	15.64	1.22	1.11
1	G	251	CSS	O-C	14.27	1.21	1.11
1	C	251	CSS	CA-C	2.35	1.52	1.48

All (1) bond angle outliers are listed below:

Mol	Chain	Res	Type	Atoms	Z	Observed(°)	Ideal(°)
1	C	251	CSS	CB-CA-N	-2.81	105.50	110.27

There are no chirality outliers.

There are no torsion outliers.

There are no ring outliers.

## 5.5 Carbohydrates ⓘ

There are no carbohydrates in this entry.

## 5.6 Ligand geometry ⓘ

Of 24 ligands modelled in this entry, 12 are monoatomic - leaving 12 for Mogul analysis.

In the following table, the Counts columns list the number of bonds (or angles) for which Mogul statistics could be retrieved, the number of bonds (or angles) that are observed in the model and the number of bonds (or angles) that are defined in the chemical component dictionary. The Link column lists molecule types, if any, to which the group is linked. The Z score for a bond length (or angle) is the number of standard deviations the observed value is removed from the expected value. A bond length (or angle) with  $|Z| > 2$  is considered an outlier worth inspection. RMSZ is the root-mean-square of all Z scores of the bond lengths (or angles).

Mol	Type	Chain	Res	Link	Bond lengths			Bond angles		
					Counts	RMSZ	# $ Z  > 2$	Counts	RMSZ	# $ Z  > 2$
3	HEC	A	1291	1,4	50,50,50	2.95	15 (30%)	56,82,82	1.78	13 (23%)
3	HEC	A	1292	1	50,50,50	2.78	13 (26%)	56,82,82	1.79	10 (17%)
3	HEC	B	1158	2	50,50,50	3.00	16 (32%)	56,82,82	1.72	13 (23%)
3	HEC	C	1291	1,4	50,50,50	2.82	15 (30%)	56,82,82	1.76	11 (19%)
3	HEC	C	1292	1	50,50,50	2.78	13 (26%)	56,82,82	1.74	12 (21%)
3	HEC	D	1158	2	50,50,50	2.86	16 (32%)	56,82,82	1.91	16 (28%)
3	HEC	E	1291	1,4	50,50,50	2.98	18 (36%)	56,82,82	1.87	10 (17%)

Mol	Type	Chain	Res	Link	Bond lengths			Bond angles		
					Counts	RMSZ	# Z  > 2	Counts	RMSZ	# Z  > 2
3	HEC	E	1292	1	50,50,50	2.77	13 (26%)	56,82,82	1.60	8 (14%)
3	HEC	F	1158	2	50,50,50	2.86	16 (32%)	56,82,82	1.80	16 (28%)
3	HEC	G	1291	1,4	50,50,50	3.03	13 (26%)	56,82,82	1.76	11 (19%)
3	HEC	G	1292	1	50,50,50	2.84	16 (32%)	56,82,82	1.67	9 (16%)
3	HEC	H	1158	2	50,50,50	2.99	14 (28%)	56,82,82	1.77	12 (21%)

In the following table, the Chirals column lists the number of chiral outliers, the number of chiral centers analysed, the number of these observed in the model and the number defined in the chemical component dictionary. Similar counts are reported in the Torsion and Rings columns. '-' means no outliers of that kind were identified.

Mol	Type	Chain	Res	Link	Chirals	Torsions	Rings
3	HEC	A	1291	1,4	-	0/10/54/54	0/0/8/8
3	HEC	A	1292	1	-	0/10/54/54	0/0/8/8
3	HEC	B	1158	2	-	0/10/54/54	0/0/8/8
3	HEC	C	1291	1,4	-	0/10/54/54	0/0/8/8
3	HEC	C	1292	1	-	0/10/54/54	0/0/8/8
3	HEC	D	1158	2	-	0/10/54/54	0/0/8/8
3	HEC	E	1291	1,4	-	0/10/54/54	0/0/8/8
3	HEC	E	1292	1	-	0/10/54/54	0/0/8/8
3	HEC	F	1158	2	-	0/10/54/54	0/0/8/8
3	HEC	G	1291	1,4	-	0/10/54/54	0/0/8/8
3	HEC	G	1292	1	-	0/10/54/54	0/0/8/8
3	HEC	H	1158	2	-	0/10/54/54	0/0/8/8

The worst 5 of 178 bond length outliers are listed below:

Mol	Chain	Res	Type	Atoms	Z	Observed(Å)	Ideal(Å)
3	H	1158	HEC	C3C-CAC	10.90	1.57	1.35
3	B	1158	HEC	C3C-CAC	10.82	1.57	1.35
3	G	1291	HEC	C3C-CAC	10.80	1.57	1.35
3	G	1292	HEC	C3C-CAC	10.72	1.57	1.35
3	G	1291	HEC	C3B-CAB	10.60	1.57	1.35

The worst 5 of 141 bond angle outliers are listed below:

Mol	Chain	Res	Type	Atoms	Z	Observed(°)	Ideal(°)
3	D	1158	HEC	CBB-CAB-C3B	-6.51	110.10	128.44
3	A	1292	HEC	CBB-CAB-C3B	-6.17	111.08	128.44
3	B	1158	HEC	CBB-CAB-C3B	-6.14	111.15	128.44
3	G	1292	HEC	CBB-CAB-C3B	-6.05	111.40	128.44

*Continued on next page...*

*Continued from previous page...*

Mol	Chain	Res	Type	Atoms	Z	Observed(°)	Ideal(°)
3	E	1291	HEC	CMC-C2C-C3C	-5.97	119.13	125.72

There are no chirality outliers.

There are no torsion outliers.

There are no ring outliers.

## 5.7 Other polymers ⓘ

There are no such residues in this entry.

## 5.8 Polymer linkage issues

There are no chain breaks in this entry.



## 6 Fit of model and data ⓘ

### 6.1 Protein, DNA and RNA chains ⓘ

In the following table, the column labelled ‘#RSRZ> 2’ contains the number (and percentage) of RSRZ outliers, followed by percent RSRZ outliers for the chain as percentile scores relative to all X-ray entries and entries of similar resolution. The OWAB column contains the minimum, median, 95<sup>th</sup> percentile and maximum values of the occupancy-weighted average B-factor per residue. The column labelled ‘Q< 0.9’ lists the number of (and percentage) of residues with an average occupancy less than 0.9.

Mol	Chain	Analysed	<RSRZ>	#RSRZ>2	OWAB(Å <sup>2</sup> )	Q<0.9
1	A	264/264 (100%)	-0.18	5 (1%) 64 65	22, 28, 41, 51	0
1	C	264/264 (100%)	-0.26	3 (1%) 77 80	21, 27, 39, 49	0
1	E	264/264 (100%)	-0.21	6 (2%) 57 59	21, 27, 41, 53	0
1	G	264/264 (100%)	-0.20	5 (1%) 64 65	22, 27, 42, 51	0
2	B	137/137 (100%)	0.02	2 (1%) 70 72	25, 31, 41, 59	0
2	D	137/137 (100%)	-0.10	2 (1%) 70 72	24, 29, 39, 55	0
2	F	137/137 (100%)	-0.08	2 (1%) 70 72	25, 31, 41, 57	0
2	H	137/137 (100%)	-0.17	2 (1%) 70 72	23, 28, 37, 55	0
All	All	1604/1604 (100%)	-0.17	27 (1%) 67 69	21, 28, 41, 59	0

The worst 5 of 27 RSRZ outliers are listed below:

Mol	Chain	Res	Type	RSRZ
2	F	21	CYS	7.7
2	D	21	CYS	7.7
2	B	21	CYS	7.4
2	H	21	CYS	7.3
2	H	157	GLU	5.2

### 6.2 Non-standard residues in protein, DNA, RNA chains ⓘ

In the following table, the Atoms column lists the number of modelled atoms in the group and the number defined in the chemical component dictionary. LLDF column lists the quality of electron density of the group with respect to its neighbouring residues in protein, DNA or RNA chains. The B-factors column lists the minimum, median, 95<sup>th</sup> percentile and maximum values of B factors of atoms in the group. The column labelled ‘Q< 0.9’ lists the number of atoms with occupancy less than 0.9.

Mol	Type	Chain	Res	Atoms	RSR	LLDF	B-factors( $\text{\AA}^2$ )	Q<0.9
1	CSS	G	251	7/8	0.07	-0.31	23,23,27,29	0
1	CSS	C	251	7/8	0.07	-0.57	23,24,26,30	0
1	CSS	E	251	7/8	0.07	-0.60	24,25,27,28	0
1	CSS	A	251	7/8	0.07	-0.61	25,26,28,31	0

### 6.3 Carbohydrates

There are no carbohydrates in this entry.

### 6.4 Ligands

In the following table, the Atoms column lists the number of modelled atoms in the group and the number defined in the chemical component dictionary. LLDF column lists the quality of electron density of the group with respect to its neighbouring residues in protein, DNA or RNA chains. The B-factors column lists the minimum, median, 95<sup>th</sup> percentile and maximum values of B factors of atoms in the group. The column labelled 'Q< 0.9' lists the number of atoms with occupancy less than 0.9.

Mol	Type	Chain	Res	Atoms	RSR	LLDF	B-factors( $\text{\AA}^2$ )	Q<0.9
3	HEC	A	1291	43/43	0.11	0.92	22,26,28,32	0
3	HEC	E	1291	43/43	0.10	0.54	2,23,27,27	0
3	HEC	D	1158	43/43	0.11	0.31	23,27,40,47	0
3	HEC	C	1291	43/43	0.10	0.30	2,24,28,33	0
3	HEC	F	1158	43/43	0.11	0.25	24,27,37,48	0
3	HEC	G	1292	43/43	0.08	0.16	19,23,27,28	0
3	HEC	G	1291	43/43	0.10	0.12	2,25,27,28	0
3	HEC	A	1292	43/43	0.09	-0.04	21,24,27,29	0
3	HEC	B	1158	43/43	0.10	-0.05	25,30,39,43	0
3	HEC	H	1158	43/43	0.09	-0.15	21,25,37,43	0
3	HEC	E	1292	43/43	0.08	-0.32	21,23,27,29	0
3	HEC	C	1292	43/43	0.08	-0.52	18,22,25,27	0
4	ZN	A	1295	1/1	0.07	-1.59	65,65,65,65	0
4	ZN	G	1295	1/1	0.07	-1.62	62,62,62,62	0
4	ZN	E	1294	1/1	0.06	-1.70	64,64,64,64	0
4	ZN	G	1293	1/1	0.01	-2.86	31,31,31,31	0
4	ZN	C	1293	1/1	0.01	-3.30	32,32,32,32	0
4	ZN	E	1293	1/1	0.03	-3.36	33,33,33,33	0
4	ZN	C	1294	1/1	0.04	-4.16	62,62,62,62	0
4	ZN	A	1293	1/1	0.03	-4.25	32,32,32,32	0
4	ZN	C	1295	1/1	0.04	-4.38	25,25,25,25	0
4	ZN	G	1294	1/1	0.03	-5.02	26,26,26,26	0
4	ZN	A	1294	1/1	0.03	-5.26	25,25,25,25	0

*Continued on next page...*

*Continued from previous page...*

Mol	Type	Chain	Res	Atoms	RSR	LLDF	B-factors( $\text{\AA}^2$ )	Q<0.9
4	ZN	A	1296	1/1	0.03	-5.63	24,24,24,24	0

## 6.5 Other polymers ⓘ

There are no such residues in this entry.