



wwPDB X-ray Structure Validation Summary Report

Feb 28, 2014 – 07:37 PM GMT

PDB ID : 3C1X
Title : Crystal structure of the tyrosine kinase domain of the hepatocyte growth factor receptor c-MET in complex with a Pyrrolotriazine based inhibitor
Authors : Sack, J.
Deposited on : 2008-01-24
Resolution : 2.17 Å(reported)

This is a wwPDB validation summary report for a publicly released PDB entry.

We welcome your comments at validation@mail.wwpdb.org

A user guide is available at <http://wwpdb.org/ValidationPDFNotes.html>

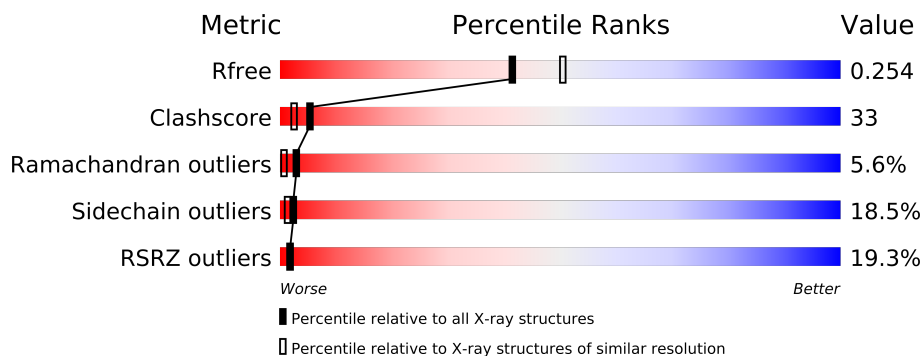
The following versions of software and data (see [references](#)) were used in the production of this report:

MolProbity	:	4.02b-467
Mogul	:	1.15 2013
Xtriage (Phenix)	:	dev-1323
EDS	:	stable22639
Percentile statistics	:	21963
Refmac	:	5.8.0049
CCP4	:	6.3.0 (Settle)
Ideal geometry (proteins)	:	Engh & Huber (2001)
Ideal geometry (DNA, RNA)	:	Parkinson et. al. (1996)
Validation Pipeline (wwPDB-VP)	:	stable22683

1 Overall quality at a glance

The reported resolution of this entry is 2.17 Å.

Percentile scores (ranging between 0-100) for global validation metrics of the entry are shown in the following graphic. The table shows the number of entries on which the scores are based.



Metric	Whole archive (#Entries)	Similar resolution (#Entries, resolution range(Å))
R_{free}	66092	3841 (2.20-2.16)
Clashscore	79885	4835 (2.20-2.16)
Ramachandran outliers	78287	4740 (2.20-2.16)
Sidechain outliers	78261	4741 (2.20-2.16)
RSRZ outliers	66119	3842 (2.20-2.16)

The table below summarises the geometric issues observed across the polymeric chains and their fit to the electron density. The red, orange, yellow and green segments on the lower bar indicate the fraction of residues that contain outliers for ≥ 3 , 2, 1 and 0 types of geometric quality criteria. The upper red bar (where present) indicates the fraction of residues that have poor fit to the electron density.

Mol	Chain	Length	Quality of chain
1	A	373	

2 Entry composition

There are 3 unique types of molecules in this entry. The entry contains 2440 atoms, of which 0 are hydrogen and 0 are deuterium.

In the tables below, the ZeroOcc column contains the number of atoms modelled with zero occupancy, the AltConf column contains the number of residues with at least one atom in alternate conformation and the Trace column contains the number of residues modelled with at most 2 atoms.

- Molecule 1 is a protein called Hepatocyte growth factor receptor.

Mol	Chain	Residues	Atoms					ZeroOcc	AltConf	Trace
1	A	290	Total	C	N	O	S	0	0	0
			2309	1493	394	408	14			

There are 65 discrepancies between the modelled and reference sequences:

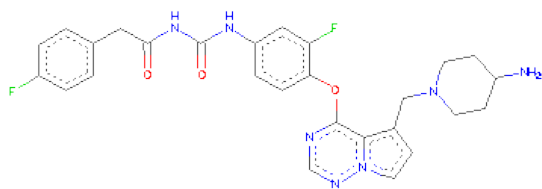
Chain	Residue	Modelled	Actual	Comment	Reference
A	988	MET	-	EXPRESSION TAG	UNP P08581
A	989	SER	-	EXPRESSION TAG	UNP P08581
A	990	PRO	-	EXPRESSION TAG	UNP P08581
A	991	ILE	-	EXPRESSION TAG	UNP P08581
A	992	ASP	-	EXPRESSION TAG	UNP P08581
A	993	PRO	-	EXPRESSION TAG	UNP P08581
A	994	MET	-	EXPRESSION TAG	UNP P08581
A	995	GLY	-	EXPRESSION TAG	UNP P08581
A	996	HIS	-	EXPRESSION TAG	UNP P08581
A	997	HIS	-	EXPRESSION TAG	UNP P08581
A	998	HIS	-	EXPRESSION TAG	UNP P08581
A	999	HIS	-	EXPRESSION TAG	UNP P08581
A	1000	HIS	-	EXPRESSION TAG	UNP P08581
A	1001	HIS	-	EXPRESSION TAG	UNP P08581
A	1002	GLY	-	EXPRESSION TAG	UNP P08581
A	1003	ARG	-	EXPRESSION TAG	UNP P08581
A	1004	ARG	-	EXPRESSION TAG	UNP P08581
A	1005	ARG	-	EXPRESSION TAG	UNP P08581
A	1006	ALA	-	EXPRESSION TAG	UNP P08581
A	1007	SER	-	EXPRESSION TAG	UNP P08581
A	1008	VAL	-	EXPRESSION TAG	UNP P08581
A	1009	ALA	-	EXPRESSION TAG	UNP P08581
A	1010	ALA	-	EXPRESSION TAG	UNP P08581
A	1011	GLY	-	EXPRESSION TAG	UNP P08581
A	1012	ILE	-	EXPRESSION TAG	UNP P08581
A	1013	LEU	-	EXPRESSION TAG	UNP P08581
A	1014	VAL	-	EXPRESSION TAG	UNP P08581

Continued on next page...

Continued from previous page...

Chain	Residue	Modelled	Actual	Comment	Reference
A	1015	PRO	-	EXPRESSION TAG	UNP P08581
A	1016	ARG	-	EXPRESSION TAG	UNP P08581
A	1017	GLY	-	EXPRESSION TAG	UNP P08581
A	1018	SER	-	EXPRESSION TAG	UNP P08581
A	1019	PRO	-	EXPRESSION TAG	UNP P08581
A	1020	GLY	-	EXPRESSION TAG	UNP P08581
A	1021	LEU	-	EXPRESSION TAG	UNP P08581
A	1022	ASP	-	EXPRESSION TAG	UNP P08581
A	1023	GLY	-	EXPRESSION TAG	UNP P08581
A	1024	ILE	-	EXPRESSION TAG	UNP P08581
A	1025	CYS	-	EXPRESSION TAG	UNP P08581
A	1026	SER	-	EXPRESSION TAG	UNP P08581
A	1027	ILE	-	EXPRESSION TAG	UNP P08581
A	1028	GLU	-	EXPRESSION TAG	UNP P08581
A	1029	GLU	-	EXPRESSION TAG	UNP P08581
A	1030	LEU	-	EXPRESSION TAG	UNP P08581
A	1031	SER	-	EXPRESSION TAG	UNP P08581
A	1032	THR	-	EXPRESSION TAG	UNP P08581
A	1033	SER	-	EXPRESSION TAG	UNP P08581
A	1034	LEU	-	EXPRESSION TAG	UNP P08581
A	1035	TYR	-	EXPRESSION TAG	UNP P08581
A	1036	LYS	-	EXPRESSION TAG	UNP P08581
A	1037	LYS	-	EXPRESSION TAG	UNP P08581
A	1038	ALA	-	EXPRESSION TAG	UNP P08581
A	1039	GLY	-	EXPRESSION TAG	UNP P08581
A	1040	SER	-	EXPRESSION TAG	UNP P08581
A	1041	GLU	-	EXPRESSION TAG	UNP P08581
A	1042	ASN	-	EXPRESSION TAG	UNP P08581
A	1043	LEU	-	EXPRESSION TAG	UNP P08581
A	1044	TYR	-	EXPRESSION TAG	UNP P08581
A	1045	PHE	-	EXPRESSION TAG	UNP P08581
A	1046	GLN	-	EXPRESSION TAG	UNP P08581
A	1047	GLY	-	EXPRESSION TAG	UNP P08581
A	1048	ALA	-	EXPRESSION TAG	UNP P08581
A	1194	PHE	TYR	ENGINEERED	UNP P08581
A	1234	PHE	TYR	ENGINEERED	UNP P08581
A	1235	ASP	TYR	ENGINEERED	UNP P08581
A	1272	LEU	VAL	ENGINEERED	UNP P08581

- Molecule 2 is N-{[4-({5-[(4-AMINOPIPERIDIN-1-YL)METHYL]PYRROLO[2,1-F][1,2,4]TRIAZIN-4-YL}OXY)-3-FLUOROPHENYL]CARBAMOYL}-2-(4-FLUOROPHENYL)ACETAMIDE (three-letter code: CKK) (formula: C₂₇H₂₇F₂N₇O₃).



Mol	Chain	Residues	Atoms					ZeroOcc	AltConf
2	A	1	Total	C	F	N	O	0	0
			39	27	2	7	3		

- Molecule 3 is water.

Mol	Chain	Residues	Atoms		ZeroOcc	AltConf
3	A	92	Total	O	0	0
			92	92		

4 Data and refinement statistics

Property	Value	Source
Space group	P 21 21 21	Depositor
Cell constants a, b, c, α , β , γ	42.78Å 46.15Å 151.02Å 90.00° 90.00° 90.00°	Depositor
Resolution (Å)	37.76 – 2.17 37.76 – 2.18	Depositor EDS
% Data completeness (in resolution range)	80.5 (37.76-2.17) 80.7 (37.76-2.18)	Depositor EDS
R_{merge}	0.11	Depositor
R_{sym}	(Not available)	Depositor
$\langle I/\sigma(I) \rangle$ ¹	2.67 (at 2.18Å)	Xtriage
Refinement program	BUSTER-TNT 2.1.1	Depositor
R, R_{free}	0.205 , 0.262 0.211 , 0.254	Depositor DCC
R_{free} test set	791 reflections (6.35%)	DCC
Wilson B-factor (Å ²)	38.4	Xtriage
Anisotropy	0.160	Xtriage
Bulk solvent k_{sol} (e/Å ³), B_{sol} (Å ²)	0.36 , 57.9	EDS
Estimated twinning fraction	No twinning to report.	Xtriage
L-test for twinning	$\langle L \rangle = 0.50$, $\langle L^2 \rangle = 0.34$	Xtriage
Outliers	1 of 13241 reflections (0.008%)	Xtriage
F_o, F_c correlation	0.94	EDS
Total number of atoms	2440	wwPDB-VP
Average B, all atoms (Å ²)	54.0	wwPDB-VP

Xtriage's analysis on translational NCS is as follows: *The largest off-origin peak in the Patterson function is 7.65% of the height of the origin peak. No significant pseudotranslation is detected.*

¹Intensities estimated from amplitudes.

5 Model quality

5.1 Standard geometry

Bond lengths and bond angles in the following residue types are not validated in this section: CKK

The Z score for a bond length (or angle) is the number of standard deviations the observed value is removed from the expected value. A bond length (or angle) with $|Z| > 5$ is considered an outlier worth inspection. RMSZ is the root-mean-square of all Z scores of the bond lengths (or angles).

Mol	Chain	Bond lengths		Bond angles	
		RMSZ	$\# Z > 5$	RMSZ	$\# Z > 5$
1	A	0.36	0/2367	0.55	0/3209

There are no bond length outliers.

There are no bond angle outliers.

There are no chirality outliers.

There are no planarity outliers.

5.2 Close contacts

In the following table, the Non-H and H(model) columns list the number of non-hydrogen atoms and hydrogen atoms in the chain respectively. The H(added) column lists the number of hydrogens added by MolProbity. The Clashes column lists the number of clashes within the asymmetric unit, and the number in parentheses is this value normalized per 1000 atoms of the molecule in the chain. The Symm-Clashes column gives symmetry related clashes, in the same way as for the Clashes column.

Mol	Chain	Non-H	H(model)	H(added)	Clashes	Symm-Clashes
1	A	2309	0	2332	152	0
2	A	39	0	27	4	0
3	A	92	0	0	6	0
All	All	2440	0	2359	154	0

Clashscore is defined as the number of clashes calculated for the entry per 1000 atoms (including hydrogens) of the entry. The overall clashscore for this entry is 33.

The worst 5 of 154 close contacts within the same asymmetric unit are listed below.

Atom-1	Atom-2	Distance(Å)	Clash(Å)
1:A:1288:ASN:ND2	1:A:1288:ASN:H	1.49	1.06

Continued on next page...

Continued from previous page...

Atom-1	Atom-2	Distance(Å)	Clash(Å)
1:A:1288:ASN:HD22	1:A:1288:ASN:N	1.55	0.98
1:A:1248:LYS:HE3	1:A:1289:THR:HB	1.53	0.88
1:A:1053:ILE:HD11	1:A:1118:ILE:HB	1.54	0.88
1:A:1083:VAL:HG12	1:A:1093:TYR:CE1	2.09	0.88

There are no symmetry-related clashes.

5.3 Torsion angles

5.3.1 Protein backbone ⓘ

In the following table, the Percentiles column shows the percent Ramachandran outliers of the chain as a percentile score with respect to all X-ray entries followed by that with respect to entries of similar resolution. The Analysed column shows the number of residues for which the backbone conformation was analysed, and the total number of residues.

Mol	Chain	Analysed	Favoured	Allowed	Outliers	Percentiles
1	A	286/373 (77%)	252 (88%)	18 (6%)	16 (6%)	3 1

5 of 16 Ramachandran outliers are listed below:

Mol	Chain	Res	Type
1	A	1058	LEU
1	A	1060	PRO
1	A	1113	ASN
1	A	1258	GLN
1	A	1289	THR

5.3.2 Protein sidechains ⓘ

In the following table, the Percentiles column shows the percent sidechain outliers of the chain as a percentile score with respect to all X-ray entries followed by that with respect to entries of similar resolution. The Analysed column shows the number of residues for which the sidechain conformation was analysed, and the total number of residues.

Mol	Chain	Analysed	Rotameric	Outliers	Percentiles
1	A	259/325 (80%)	211 (82%)	48 (18%)	2 1

5 of 48 residues with a non-rotameric sidechain are listed below:

Mol	Chain	Res	Type
1	A	1112	LEU
1	A	1129	ILE
1	A	1291	ASP
1	A	1114	ARG
1	A	1122	SER

Some sidechains can be flipped to improve hydrogen bonding and reduce clashes. 5 of 6 such sidechains are listed below:

Mol	Chain	Res	Type
1	A	1081	ASN
1	A	1288	ASN
1	A	1167	ASN
1	A	1068	HIS
1	A	1174	HIS

5.3.3 RNA ⓘ

There are no RNA chains in this entry.

5.4 Non-standard residues in protein, DNA, RNA chains ⓘ

There are no non-standard protein/DNA/RNA residues in this entry.

5.5 Carbohydrates ⓘ

There are no carbohydrates in this entry.

5.6 Ligand geometry ⓘ

1 ligand is modelled in this entry.

In the following table, the Counts columns list the number of bonds (or angles) for which Mogul statistics could be retrieved, the number of bonds (or angles) that are observed in the model and the number of bonds (or angles) that are defined in the chemical component dictionary. The Link column lists molecule types, if any, to which the group is linked. The Z score for a bond length (or angle) is the number of standard deviations the observed value is removed from the expected value. A bond length (or angle) with $|Z| > 2$ is considered an outlier worth inspection. RMSZ is the root-mean-square of all Z scores of the bond lengths (or angles).

Mol	Type	Chain	Res	Link	Bond lengths			Bond angles		
					Counts	RMSZ	# Z > 2	Counts	RMSZ	# Z > 2
2	CKK	A	1500	-	43,43,43	1.36	7 (16%)	58,60,60	1.94	15 (25%)

In the following table, the Chirals column lists the number of chiral outliers, the number of chiral centers analysed, the number of these observed in the model and the number defined in the chemical component dictionary. Similar counts are reported in the Torsion and Rings columns. '-' means no outliers of that kind were identified.

Mol	Type	Chain	Res	Link	Chirals	Torsions	Rings
2	CKK	A	1500	-	-	0/19/30/30	0/3/5/5

The worst 5 of 7 bond length outliers are listed below:

Mol	Chain	Res	Type	Atoms	Z	Observed(Å)	Ideal(Å)
2	A	1500	CKK	C8-C7	-3.45	1.45	1.51
2	A	1500	CKK	C12-N11	-3.27	1.32	1.39
2	A	1500	CKK	C30-C31	2.68	1.45	1.40
2	A	1500	CKK	C27-N28	-2.45	1.36	1.40
2	A	1500	CKK	C23-N24	-2.31	1.28	1.31

The worst 5 of 15 bond angle outliers are listed below:

Mol	Chain	Res	Type	Atoms	Z	Observed(°)	Ideal(°)
2	A	1500	CKK	C30-C31-C27	-5.73	104.33	107.53
2	A	1500	CKK	C9-N11-C12	-4.58	123.06	129.02
2	A	1500	CKK	C31-C27-N28	3.71	109.39	106.02
2	A	1500	CKK	O22-C23-N24	3.67	124.25	119.86
2	A	1500	CKK	C15-C16-C17	3.66	121.82	119.04

There are no chirality outliers.

There are no torsion outliers.

There are no ring outliers.

5.7 Other polymers ⓘ

There are no such residues in this entry.

5.8 Polymer linkage issues

There are no chain breaks in this entry.

6 Fit of model and data ⓘ

6.1 Protein, DNA and RNA chains ⓘ

In the following table, the column labelled ‘#RSRZ> 2’ contains the number (and percentage) of RSRZ outliers, followed by percent RSRZ outliers for the chain as percentile scores relative to all X-ray entries and entries of similar resolution. The OWAB column contains the minimum, median, 95th percentile and maximum values of the occupancy-weighted average B-factor per residue. The column labelled ‘Q< 0.9’ lists the number of (and percentage) of residues with an average occupancy less than 0.9.

Mol	Chain	Analysed	<RSRZ>	#RSRZ>2	OWAB(Å ²)	Q<0.9
1	A	290/373 (77%)	0.85	56 (19%) 2 2	22, 42, 104, 118	1 (0%)

The worst 5 of 56 RSRZ outliers are listed below:

Mol	Chain	Res	Type	RSRZ
1	A	1050	THR	8.7
1	A	1116	THR	6.8
1	A	1072	GLY	6.1
1	A	1101	ASP	5.6
1	A	1100	ASN	5.6

6.2 Non-standard residues in protein, DNA, RNA chains ⓘ

There are no non-standard protein/DNA/RNA residues in this entry.

6.3 Carbohydrates ⓘ

There are no carbohydrates in this entry.

6.4 Ligands ⓘ

In the following table, the Atoms column lists the number of modelled atoms in the group and the number defined in the chemical component dictionary. LLDF column lists the quality of electron density of the group with respect to its neighbouring residues in protein, DNA or RNA chains. The B-factors column lists the minimum, median, 95th percentile and maximum values of B factors of atoms in the group. The column labelled ‘Q< 0.9’ lists the number of atoms with occupancy less than 0.9.

Mol	Type	Chain	Res	Atoms	RSR	LLDF	B-factors(Å ²)	Q<0.9
2	CKK	A	1500	39/39	0.13	-0.47	41,49,57,58	0

6.5 Other polymers ⓘ

There are no such residues in this entry.