



Full wwPDB X-ray Structure Validation Report i

Feb 27, 2014 – 08:49 AM GMT

PDB ID : 2C2D
Title : EFFICIENT AND HIGH FIDELITY INCORPORATION OF DCTP OPPOSITE 7,8-DIHYDRO-8-OXODEOXYGUANOSINEBY SULFOLOBUS SOLFATARICUS DNA POLYMERASE DPO4
Authors : Irimia, A.; Loukachevitch, L.V.; Egli, M.
Deposited on : 2005-09-27
Resolution : 2.57 Å(reported)

This is a full wwPDB validation report for a publicly released PDB entry.
We welcome your comments at validation@mail.wwpdb.org
A user guide is available at <http://wwpdb.org/ValidationPDFNotes.html>

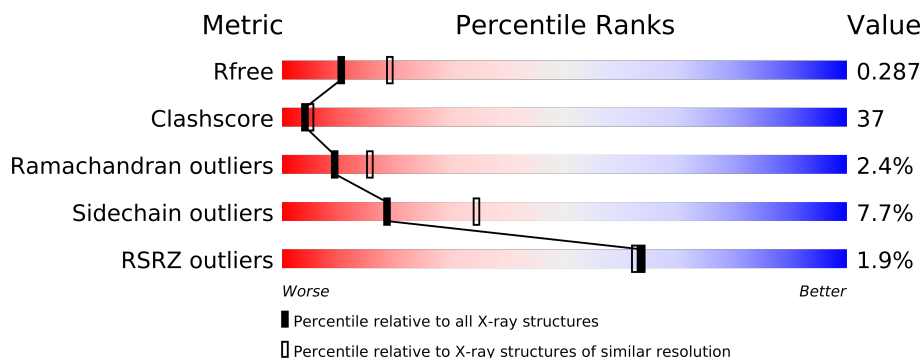
The following versions of software and data (see [references](#)) were used in the production of this report:

MolProbity	:	4.02b-467
Mogul	:	1.15 2013
Xtriage (Phenix)	:	dev-1323
EDS	:	stable22639
Percentile statistics	:	21963
Refmac	:	5.8.0049
CCP4	:	6.3.0 (Settle)
Ideal geometry (proteins)	:	Engh & Huber (2001)
Ideal geometry (DNA, RNA)	:	Parkinson et. al. (1996)
Validation Pipeline (wwPDB-VP)	:	stable22683

1 Overall quality at a glance

The reported resolution of this entry is 2.57 Å.

Percentile scores (ranging between 0-100) for global validation metrics of the entry are shown in the following graphic. The table shows the number of entries on which the scores are based.



Metric	Whole archive (#Entries)	Similar resolution (#Entries, resolution range(Å))
R_{free}	66092	1891 (2.60-2.56)
Clashscore	79885	2358 (2.60-2.56)
Ramachandran outliers	78287	2316 (2.60-2.56)
Sidechain outliers	78261	2316 (2.60-2.56)
RSRZ outliers	66119	1891 (2.60-2.56)

The table below summarises the geometric issues observed across the polymeric chains and their fit to the electron density. The red, orange, yellow and green segments on the lower bar indicate the fraction of residues that contain outliers for ≥ 3 , 2, 1 and 0 types of geometric quality criteria. The upper red bar (where present) indicates the fraction of residues that have poor fit to the electron density.

Mol	Chain	Length	Quality of chain
1	A	358	
2	P	13	
3	T	18	

The following table lists non-polymeric compounds that are outliers for geometric or electron-density-fit criteria:

Mol	Type	Chain	Res	Geometry	Electron density
4	DTP	A	1002	-	X

2 Entry composition

There are 6 unique types of molecules in this entry. The entry contains 3474 atoms, of which 0 are hydrogen and 0 are deuterium.

In the tables below, the ZeroOcc column contains the number of atoms modelled with zero occupancy, the AltConf column contains the number of residues with at least one atom in alternate conformation and the Trace column contains the number of residues modelled with at most 2 atoms.

- Molecule 1 is a protein called DNA POLYMERASE IV.

Mol	Chain	Residues	Atoms					ZeroOcc	AltConf	Trace
1	A	342	Total	C	N	O	S	0	0	1
			2744	1760	473	504	7			

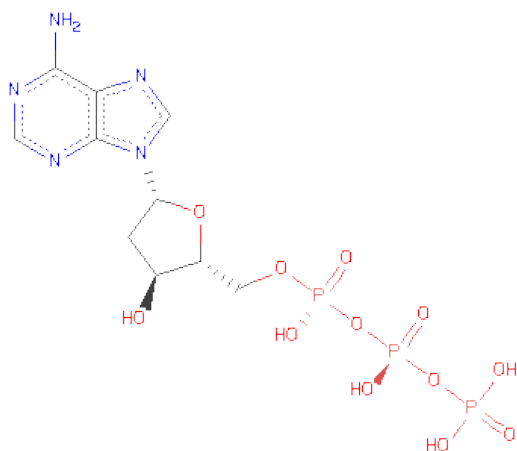
- Molecule 2 is a DNA chain called 5'-D(*GP*GP*GP*GP*GP*AP*AP*GP*GP*AP*TP*TP*C)-3'.

Mol	Chain	Residues	Atoms					ZeroOcc	AltConf	Trace
2	P	13	Total	C	N	O	P	0	0	0
			273	129	57	75	12			

- Molecule 3 is a DNA chain called 5'-D(*TP*CP*AP*C 8OGP*GP*AP*AP*TP*CP*CP*TP*TP*CP*CP*CP*CP*C)-3'.

Mol	Chain	Residues	Atoms					ZeroOcc	AltConf	Trace
3	T	15	Total	C	N	O	P	0	0	0
			296	142	50	90	14			

- Molecule 4 is 2'-DEOXYADENOSINE 5'-TRIPHOSPHATE (three-letter code: DTP) (formula: C₁₀H₁₆N₅O₁₂P₃).



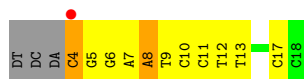
Mol	Chain	Residues	Atoms					ZeroOcc	AltConf
4	A	1	Total 30	C 10	N 5	O 12	P 3	0	0
4	A	1	Total 30	C 10	N 5	O 12	P 3	0	0

- Molecule 5 is CALCIUM ION (three-letter code: CA) (formula: Ca).

Mol	Chain	Residues	Atoms	ZeroOcc	AltConf
5	A	5	Total Ca 5 5	0	0

- Molecule 6 is water.

Mol	Chain	Residues	Atoms	ZeroOcc	AltConf
6	A	60	Total O 60 60	0	0
6	P	18	Total O 18 18	0	0
6	T	18	Total O 18 18	0	0



4 Data and refinement statistics

Property	Value	Source
Space group	P 21 21 2	Depositor
Cell constants a, b, c, α , β , γ	97.51Å 102.02Å 53.09Å 90.00° 90.00° 90.00°	Depositor
Resolution (Å)	43.99 – 2.57 43.99 – 2.57	Depositor EDS
% Data completeness (in resolution range)	97.0 (43.99-2.57) 97.1 (43.99-2.57)	Depositor EDS
R_{merge}	0.09	Depositor
R_{sym}	(Not available)	Depositor
$\langle I/\sigma(I) \rangle$ ¹	1.44 (at 2.58Å)	Xtriage
Refinement program	CNS 1.1	Depositor
R, R_{free}	0.240 , 0.280 0.242 , 0.287	Depositor DCC
R_{free} test set	828 reflections (5.11%)	DCC
Wilson B-factor (Å ²)	77.0	Xtriage
Anisotropy	0.148	Xtriage
Bulk solvent k_{sol} (e/Å ³), B_{sol} (Å ²)	0.32 , 76.1	EDS
Estimated twinning fraction	0.032 for k,h,-l	Xtriage
L-test for twinning	$\langle L \rangle = 0.47$, $\langle L^2 \rangle = 0.30$	Xtriage
Outliers	0 of 17020 reflections	Xtriage
F_o, F_c correlation	0.94	EDS
Total number of atoms	3474	wwPDB-VP
Average B, all atoms (Å ²)	78.0	wwPDB-VP

Xtriage's analysis on translational NCS is as follows: *The largest off-origin peak in the Patterson function is 4.30% of the height of the origin peak. No significant pseudotranslation is detected.*

¹Intensities estimated from amplitudes.

5 Model quality ⓘ

5.1 Standard geometry ⓘ

Bond lengths and bond angles in the following residue types are not validated in this section: 8OG, CA, DTP

The Z score for a bond length (or angle) is the number of standard deviations the observed value is removed from the expected value. A bond length (or angle) with $|Z| > 5$ is considered an outlier worth inspection. RMSZ is the root-mean-square of all Z scores of the bond lengths (or angles).

Mol	Chain	Bond lengths		Bond angles	
		RMSZ	$\# Z > 5$	RMSZ	$\# Z > 5$
1	A	0.46	0/2783	0.70	0/3738
2	P	0.64	0/308	0.72	0/476
3	T	0.76	0/302	0.99	1/459 (0.2%)
All	All	0.51	0/3393	0.74	1/4673 (0.0%)

Chiral center outliers are detected by calculating the chiral volume of a chiral center and verifying if the center is modelled as a planar moiety or with the opposite hand. A planarity outlier is detected by checking planarity of atoms in a peptide group, atoms in a mainchain group or atoms of a sidechain that are expected to be planar.

Mol	Chain	#Chirality outliers	#Planarity outliers
3	T	0	1

There are no bond length outliers.

All (1) bond angle outliers are listed below:

Mol	Chain	Res	Type	Atoms	Z	Observed(°)	Ideal(°)
3	T	4	DC	C4'-C3'-C2'	5.46	108.01	103.10

There are no chirality outliers.

All (1) planarity outliers are listed below:

Mol	Chain	Res	Type	Group
3	T	8	DA	Sidechain

5.2 Close contacts ⓘ

In the following table, the Non-H and H(model) columns list the number of non-hydrogen atoms and hydrogen atoms in the chain respectively. The H(added) column lists the number of hydrogens

added by MolProbity. The Clashes column lists the number of clashes within the asymmetric unit, and the number in parentheses is this value normalized per 1000 atoms of the molecule in the chain. The Symm-Clashes column gives symmetry related clashes, in the same way as for the Clashes column.

Mol	Chain	Non-H	H(model)	H(added)	Clashes	Symm-Clashes
1	A	2744	0	2889	209	1
2	P	273	0	147	23	0
3	T	296	0	170	20	0
4	A	60	0	24	14	0
5	A	5	0	0	0	0
6	A	60	0	0	26	0
6	P	18	0	0	7	0
6	T	18	0	0	7	0
All	All	3474	0	3230	244	1

Clashscore is defined as the number of clashes calculated for the entry per 1000 atoms (including hydrogens) of the entry. The overall clashscore for this entry is 37.

All (244) close contacts within the same asymmetric unit are listed below.

Atom-1	Atom-2	Distance(Å)	Clash(Å)
1:A:144:ILE:HB	6:A:2029:HOH:O	1.45	1.17
4:A:1002:DTP:O1B	2:P:13:DC:H3'	1.44	1.15
1:A:123:ASN:HA	6:A:2025:HOH:O	1.47	1.10
1:A:116:ARG:HG2	1:A:117:ASP:H	1.01	1.09
1:A:116:ARG:HG2	1:A:117:ASP:N	1.62	1.05
1:A:303:PRO:HD3	6:A:2049:HOH:O	1.61	0.98
2:P:12:DT:H3'	6:P:2017:HOH:O	1.60	0.98
1:A:165:VAL:HG22	6:A:2029:HOH:O	1.65	0.96
4:A:1001:DTP:PA	4:A:1001:DTP:O1G	2.23	0.96
4:A:1001:DTP:O1G	4:A:1001:DTP:H5'1	1.68	0.94
1:A:4:LEU:HG	1:A:144:ILE:HD11	1.45	0.93
1:A:189:ILE:HD11	1:A:193:LYS:HE3	1.49	0.92
1:A:133:LEU:HD12	1:A:137:LYS:HA	1.52	0.92
1:A:98:LYS:HB3	1:A:110:ASP:HB3	1.52	0.91
1:A:131:LYS:HG2	6:A:2018:HOH:O	1.68	0.91
1:A:115:VAL:HG12	1:A:116:ARG:H	1.35	0.90
2:P:5:DG:H2''	2:P:6:DA:C8	2.11	0.86
1:A:4:LEU:HA	1:A:144:ILE:HG12	1.58	0.84
1:A:199:ILE:HG23	1:A:204:ASP:HB2	1.57	0.84
1:A:122:TYR:HE2	1:A:126:LEU:HD11	1.43	0.84
4:A:1001:DTP:C5'	4:A:1001:DTP:O1G	2.25	0.83
1:A:189:ILE:HG21	2:P:11:DT:H3'	1.60	0.83
1:A:115:VAL:HG12	1:A:116:ARG:N	1.93	0.83

Continued on next page...

Continued from previous page...

Atom-1	Atom-2	Distance(Å)	Clash(Å)
1:A:116:ARG:CG	1:A:117:ASP:H	1.90	0.83
1:A:277:ASP:CG	1:A:278:LYS:H	1.81	0.81
2:P:4:DG:H2''	2:P:5:DG:H5''	1.60	0.81
1:A:241:VAL:HG23	6:A:2042:HOH:O	1.80	0.81
1:A:126:LEU:HD12	6:A:2025:HOH:O	1.82	0.79
1:A:98:LYS:CB	1:A:110:ASP:HB3	2.12	0.78
1:A:323:LEU:HB2	6:A:2053:HOH:O	1.83	0.78
1:A:300:ARG:HG2	1:A:300:ARG:HH11	1.49	0.78
4:A:1001:DTP:HN62	3:T:5:8OG:H7	1.32	0.76
1:A:199:ILE:HD11	1:A:208:ILE:HG13	1.67	0.75
1:A:116:ARG:O	1:A:117:ASP:O	2.04	0.75
1:A:23:LEU:HA	1:A:26:LYS:HE3	1.69	0.74
1:A:95:TYR:HD2	1:A:124:LEU:HD11	1.53	0.74
1:A:197:LEU:HD21	1:A:212:LYS:HG2	1.71	0.73
1:A:31:CYS:HB2	1:A:61:ILE:HD11	1.71	0.73
1:A:239:THR:HG22	1:A:240:ARG:N	2.03	0.72
1:A:197:LEU:HD21	1:A:212:LYS:CD	2.19	0.72
1:A:115:VAL:HG12	1:A:116:ARG:O	1.90	0.72
1:A:247:ARG:HH11	1:A:247:ARG:HG3	1.55	0.72
1:A:91:LEU:O	1:A:94:GLU:HG2	1.90	0.72
1:A:103:SER:HB3	4:A:1002:DTP:O3'	1.88	0.71
1:A:115:VAL:CG1	1:A:116:ARG:H	2.03	0.70
1:A:117:ASP:OD2	1:A:119:ARG:HB3	1.90	0.70
1:A:99:ILE:HG13	1:A:109:LEU:HD23	1.72	0.70
2:P:5:DG:H2''	2:P:6:DA:H8	1.56	0.70
3:T:11:DC:H5''	6:T:2013:HOH:O	1.92	0.68
2:P:4:DG:C2'	2:P:5:DG:H5''	2.23	0.68
1:A:180:ILE:HD13	1:A:194:LEU:HD13	1.74	0.68
1:A:300:ARG:NH1	1:A:300:ARG:HG2	2.08	0.68
1:A:23:LEU:HA	1:A:26:LYS:CE	2.23	0.68
4:A:1002:DTP:PA	2:P:13:DC:O3'	2.51	0.67
1:A:91:LEU:HD11	1:A:135:LYS:HD2	1.76	0.67
1:A:240:ARG:NH1	6:T:2012:HOH:O	2.27	0.67
1:A:277:ASP:CG	1:A:278:LYS:N	2.47	0.67
1:A:188:ASN:O	1:A:192:GLU:HG2	1.96	0.66
4:A:1002:DTP:PB	2:P:13:DC:H3'	2.35	0.66
1:A:189:ILE:CG2	2:P:11:DT:H3'	2.25	0.65
1:A:122:TYR:CE2	1:A:126:LEU:HD11	2.29	0.65
1:A:273:TYR:HE1	6:A:2051:HOH:O	1.78	0.65
1:A:328:ARG:H	1:A:328:ARG:HD3	1.61	0.65
1:A:111:ILE:HG13	1:A:111:ILE:O	1.97	0.65
1:A:189:ILE:HG22	2:P:12:DT:OP2	1.97	0.64

Continued on next page...

Continued from previous page...

Atom-1	Atom-2	Distance(Å)	Clash(Å)
1:A:76:MET:HG3	1:A:81:TYR:HE2	1.61	0.64
3:T:12:DT:C6	3:T:13:DT:H72	2.34	0.64
3:T:10:DC:H6	6:T:2011:HOH:O	1.81	0.63
1:A:189:ILE:CD1	1:A:193:LYS:HE3	2.26	0.63
1:A:319:LEU:HD12	1:A:319:LEU:O	1.99	0.63
1:A:154:ALA:HA	1:A:157:MET:HE2	1.79	0.62
1:A:197:LEU:HD21	1:A:212:LYS:CG	2.28	0.62
1:A:52:LYS:NZ	6:A:2012:HOH:O	2.31	0.62
1:A:4:LEU:HG	1:A:144:ILE:CD1	2.25	0.62
1:A:267:ARG:NE	6:A:2046:HOH:O	2.34	0.61
1:A:60:PRO:HG3	3:T:4:DC:O2	2.00	0.61
6:A:2034:HOH:O	3:T:11:DC:H5'	2.01	0.61
1:A:173:ARG:NE	1:A:177:GLU:HG3	2.16	0.61
1:A:270:GLU:HG2	1:A:312:TYR:OH	2.01	0.60
1:A:287:VAL:HA	1:A:297:SER:HB3	1.83	0.60
1:A:256:ARG:HH21	1:A:327:GLU:C	2.03	0.60
1:A:95:TYR:CD2	1:A:124:LEU:HD11	2.36	0.60
1:A:152:LYS:NZ	4:A:1002:DTP:O2B	2.34	0.60
1:A:45:THR:HG22	1:A:46:ALA:N	2.17	0.60
1:A:300:ARG:HD3	6:A:2054:HOH:O	2.02	0.60
3:T:10:DC:H2'	6:T:2011:HOH:O	2.01	0.59
1:A:129:LYS:NZ	1:A:161:ASN:OD1	2.27	0.59
1:A:189:ILE:O	1:A:193:LYS:HG3	2.02	0.59
1:A:253:ARG:HD2	1:A:260:GLU:OE2	2.03	0.59
4:A:1001:DTP:O5'	4:A:1001:DTP:O1G	2.21	0.59
4:A:1002:DTP:O1B	2:P:13:DC:C3'	2.36	0.58
1:A:205:THR:HG22	1:A:226:ILE:HG12	1.84	0.58
1:A:265:LEU:HD12	1:A:319:LEU:HD22	1.84	0.58
1:A:186:ILE:C	6:P:2017:HOH:O	2.41	0.58
1:A:126:LEU:CG	6:A:2025:HOH:O	2.52	0.57
1:A:197:LEU:HD21	1:A:212:LYS:CE	2.34	0.57
1:A:174:LEU:O	1:A:176:ARG:N	2.36	0.57
1:A:332:ARG:HH12	3:T:5:8OG:H2''	1.70	0.57
1:A:60:PRO:HG3	3:T:4:DC:H1'	1.86	0.57
1:A:254:ASN:HA	1:A:330:ILE:O	2.05	0.57
1:A:37:PHE:CD1	1:A:40:SER:HB3	2.40	0.56
1:A:239:THR:HA	6:A:2040:HOH:O	2.05	0.56
2:P:9:DG:C5'	6:P:2011:HOH:O	2.53	0.56
1:A:4:LEU:HD12	1:A:111:ILE:HD13	1.88	0.55
4:A:1001:DTP:PA	4:A:1001:DTP:PG	3.04	0.55
3:T:17:DC:H1'	6:T:2018:HOH:O	2.07	0.55
4:A:1002:DTP:PA	2:P:13:DC:HO3'	2.30	0.54

Continued on next page...

Continued from previous page...

Atom-1	Atom-2	Distance(Å)	Clash(Å)
1:A:115:VAL:HG13	1:A:120:GLU:HB3	1.90	0.54
1:A:296:VAL:HG12	6:A:2048:HOH:O	2.07	0.54
1:A:37:PHE:CE1	1:A:40:SER:HB3	2.42	0.54
1:A:123:ASN:CA	6:A:2025:HOH:O	2.25	0.54
1:A:265:LEU:CD1	1:A:319:LEU:HD22	2.37	0.54
1:A:174:LEU:C	1:A:176:ARG:H	2.11	0.54
1:A:293:LEU:N	1:A:293:LEU:HD22	2.23	0.54
1:A:174:LEU:C	1:A:176:ARG:N	2.60	0.54
1:A:270:GLU:OE2	1:A:308:LYS:HD3	2.09	0.53
1:A:298:ARG:CZ	2:P:8:DG:H3'	2.38	0.53
2:P:9:DG:H5''	6:P:2011:HOH:O	2.07	0.53
1:A:295:ILE:HG23	1:A:295:ILE:O	2.08	0.53
2:P:3:DG:H2''	2:P:4:DG:H5'	1.91	0.53
1:A:247:ARG:HH12	1:A:249:VAL:HG12	1.73	0.53
1:A:118:TYR:CE2	1:A:167:ASP:HA	2.44	0.53
1:A:95:TYR:OH	1:A:127:GLU:OE2	2.18	0.52
1:A:289:VAL:HA	1:A:294:ASP:O	2.10	0.52
1:A:32:VAL:HG23	1:A:32:VAL:O	2.10	0.52
1:A:302:PHE:HZ	1:A:314:GLU:OE1	1.93	0.51
1:A:193:LYS:HG2	1:A:216:MET:HE1	1.92	0.51
1:A:262:LYS:N	1:A:263:PRO:HD2	2.26	0.51
1:A:173:ARG:CZ	1:A:177:GLU:HG3	2.39	0.51
1:A:39:ASP:OD2	1:A:65:LYS:CE	2.58	0.51
1:A:256:ARG:HG2	1:A:256:ARG:O	2.11	0.51
1:A:36:ARG:NH1	1:A:251:MET:O	2.43	0.51
1:A:197:LEU:HD21	1:A:212:LYS:HE2	1.92	0.51
1:A:265:LEU:O	1:A:269:ILE:HG13	2.10	0.51
1:A:154:ALA:HA	1:A:157:MET:CE	2.40	0.51
3:T:9:DT:H2''	6:T:2011:HOH:O	2.11	0.51
1:A:195:LYS:C	1:A:197:LEU:H	2.15	0.51
1:A:251:MET:HG2	1:A:264:TYR:CD2	2.46	0.50
3:T:6:DG:N7	6:T:2003:HOH:O	2.34	0.50
1:A:252:LYS:HE3	1:A:252:LYS:HA	1.94	0.50
1:A:67:ILE:O	1:A:68:LEU:HD23	2.11	0.50
1:A:46:ALA:HB1	1:A:50:ALA:HB3	1.93	0.50
1:A:241:VAL:O	1:A:242:ARG:C	2.50	0.49
1:A:324:GLU:HG3	6:A:2053:HOH:O	2.12	0.49
1:A:20:ASN:C	1:A:20:ASN:HD22	2.16	0.49
1:A:4:LEU:HD23	1:A:5:PHE:N	2.28	0.49
1:A:136:GLU:O	1:A:137:LYS:HB2	2.13	0.49
1:A:126:LEU:CD1	6:A:2025:HOH:O	2.48	0.49
1:A:291:GLU:OE2	1:A:331:ARG:NH1	2.45	0.49

Continued on next page...

Continued from previous page...

Atom-1	Atom-2	Distance(Å)	Clash(Å)
1:A:244:SER:HG	1:A:336:ARG:HH11	1.55	0.48
1:A:115:VAL:CG1	1:A:116:ARG:N	2.62	0.48
1:A:189:ILE:CG2	2:P:12:DT:OP2	2.60	0.48
1:A:121:ALA:O	1:A:124:LEU:HB3	2.14	0.48
1:A:241:VAL:O	1:A:243:LYS:HG3	2.13	0.48
1:A:10:TYR:CZ	1:A:14:GLN:NE2	2.82	0.48
1:A:237:ILE:O	1:A:238:ARG:HB3	2.15	0.47
1:A:127:GLU:OE2	1:A:127:GLU:C	2.52	0.47
1:A:49:GLU:CD	1:A:49:GLU:H	2.18	0.47
4:A:1001:DTP:C6	3:T:5:8OG:H7	2.28	0.47
1:A:296:VAL:N	6:A:2048:HOH:O	2.47	0.47
1:A:304:HIS:NE2	6:A:2050:HOH:O	2.36	0.47
3:T:11:DC:H2'	3:T:12:DT:H72	1.97	0.47
1:A:133:LEU:CD1	1:A:137:LYS:HA	2.34	0.47
1:A:320:GLN:O	1:A:324:GLU:HG3	2.15	0.47
3:T:11:DC:H2''	3:T:12:DT:C6	2.50	0.47
1:A:165:VAL:CG2	6:A:2029:HOH:O	2.42	0.46
1:A:303:PRO:CD	6:A:2049:HOH:O	2.38	0.46
1:A:247:ARG:HG3	1:A:247:ARG:NH1	2.24	0.46
1:A:32:VAL:O	1:A:41:GLY:HA3	2.15	0.46
1:A:119:ARG:N	6:A:2024:HOH:O	2.48	0.46
1:A:191:ALA:C	1:A:193:LYS:H	2.18	0.46
1:A:332:ARG:NH1	3:T:5:8OG:H2''	2.30	0.46
1:A:14:GLN:HG2	1:A:138:ILE:HD12	1.97	0.46
1:A:127:GLU:OE2	1:A:128:ILE:N	2.48	0.46
1:A:129:LYS:HZ3	1:A:162:GLY:N	2.14	0.46
1:A:146:LYS:NZ	1:A:231:ASP:OD2	2.49	0.45
1:A:115:VAL:CG1	1:A:120:GLU:HB3	2.45	0.45
1:A:156:ASP:O	1:A:159:LYS:HG2	2.15	0.45
1:A:233:TYR:CZ	1:A:235:GLU:HG2	2.51	0.45
1:A:65:LYS:HG2	1:A:73:TYR:CZ	2.51	0.45
1:A:133:LEU:HD12	1:A:133:LEU:O	2.17	0.45
1:A:32:VAL:CG2	1:A:32:VAL:O	2.65	0.45
1:A:127:GLU:CD	1:A:127:GLU:C	2.76	0.44
1:A:276:LEU:O	1:A:277:ASP:HB3	2.17	0.44
1:A:261:ILE:C	1:A:263:PRO:HD2	2.38	0.44
1:A:219:GLU:HG2	1:A:223:LYS:HZ2	1.83	0.44
1:A:190:THR:HG23	1:A:217:ILE:HG22	1.98	0.44
1:A:250:THR:OG1	1:A:332:ARG:HD3	2.18	0.44
1:A:190:THR:HA	1:A:193:LYS:HD2	1.99	0.44
1:A:320:GLN:O	1:A:321:LYS:C	2.56	0.44
2:P:11:DT:C6	2:P:12:DT:H72	2.53	0.44

Continued on next page...

Continued from previous page...

Atom-1	Atom-2	Distance(Å)	Clash(Å)
1:A:242:ARG:NE	3:T:8:DA:H5"	2.33	0.44
1:A:197:LEU:CD2	1:A:212:LYS:HE2	2.48	0.44
1:A:245:ILE:HG13	1:A:279:ARG:HH21	1.83	0.44
1:A:242:ARG:CZ	3:T:8:DA:H5"	2.48	0.43
1:A:39:ASP:OD2	1:A:65:LYS:HE3	2.19	0.43
1:A:247:ARG:HD2	3:T:7:DA:OP1	2.17	0.43
1:A:238:ARG:HG3	1:A:238:ARG:O	2.18	0.43
1:A:157:MET:CE	1:A:164:LYS:HE3	2.48	0.43
1:A:8:PHE:HA	1:A:140:VAL:HG12	2.00	0.43
1:A:98:LYS:HG2	1:A:110:ASP:OD2	2.18	0.43
1:A:168:ASP:O	1:A:172:LYS:HG2	2.17	0.43
1:A:275:LYS:NZ	6:A:2047:HOH:O	2.51	0.43
1:A:195:LYS:O	1:A:198:GLY:N	2.51	0.43
1:A:237:ILE:N	1:A:237:ILE:HD12	2.33	0.43
1:A:94:GLU:HG3	1:A:95:TYR:CE1	2.54	0.43
1:A:121:ALA:O	1:A:122:TYR:C	2.57	0.42
1:A:193:LYS:HG2	1:A:216:MET:CE	2.48	0.42
1:A:258:LEU:HD12	1:A:258:LEU:O	2.19	0.42
1:A:197:LEU:CD2	1:A:212:LYS:CE	2.96	0.42
1:A:146:LYS:HD3	1:A:171:VAL:HG21	2.00	0.42
1:A:175:ILE:HG22	1:A:175:ILE:O	2.20	0.42
1:A:242:ARG:NH2	3:T:8:DA:H5"	2.35	0.42
1:A:247:ARG:NH1	1:A:247:ARG:CG	2.80	0.42
2:P:10:DA:H1'	2:P:11:DT:H5"	2.02	0.42
1:A:293:LEU:N	1:A:293:LEU:CD2	2.82	0.42
2:P:11:DT:OP2	6:P:2014:HOH:O	2.21	0.42
1:A:208:ILE:HG22	1:A:209:GLU:N	2.34	0.42
1:A:49:GLU:CD	1:A:49:GLU:N	2.73	0.42
1:A:194:LEU:HB3	1:A:199:ILE:HB	2.01	0.42
1:A:300:ARG:CG	1:A:300:ARG:HH11	2.24	0.42
1:A:284:ILE:HD12	1:A:337:PHE:HE1	1.83	0.42
1:A:142:VAL:HB	1:A:163:ILE:HG13	2.02	0.42
1:A:180:ILE:CG2	1:A:181:ALA:N	2.83	0.42
1:A:297:SER:N	6:P:2012:HOH:O	2.52	0.42
1:A:98:LYS:NZ	6:A:2022:HOH:O	2.52	0.41
2:P:4:DG:C6	2:P:5:DG:C6	3.08	0.41
1:A:23:LEU:HD22	1:A:72:VAL:HG21	2.02	0.41
1:A:195:LYS:C	1:A:197:LEU:N	2.74	0.41
1:A:147:ASN:ND2	1:A:233:TYR:HD2	2.19	0.41
1:A:20:ASN:ND2	1:A:20:ASN:C	2.73	0.41
2:P:10:DA:H2"	2:P:11:DT:C5'	2.51	0.41
1:A:180:ILE:HG23	1:A:181:ALA:N	2.35	0.41

Continued on next page...

Continued from previous page...

Atom-1	Atom-2	Distance(Å)	Clash(Å)
1:A:51:ARG:C	1:A:53:PHE:H	2.24	0.41
1:A:260:GLU:O	1:A:263:PRO:HD2	2.20	0.41
1:A:283:ALA:HB2	1:A:339:LYS:HD2	2.03	0.41
1:A:195:LYS:O	1:A:197:LEU:N	2.53	0.41
1:A:45:THR:CG2	1:A:46:ALA:N	2.82	0.41
1:A:265:LEU:HD23	1:A:265:LEU:O	2.21	0.41
1:A:147:ASN:HD22	1:A:233:TYR:HD2	1.68	0.41
1:A:187:GLY:N	6:P:2017:HOH:O	2.54	0.40
1:A:8:PHE:CD1	1:A:8:PHE:N	2.86	0.40
1:A:190:THR:O	1:A:193:LYS:HB2	2.21	0.40
1:A:9:ASP:O	1:A:10:TYR:C	2.60	0.40

All (1) symmetry-related close contacts are listed below. The label for Atom-2 includes the symmetry operator and encoded unit-cell translations to be applied.

Atom-1	Atom-2	Distance(Å)	Clash(Å)
1:A:234:ASN:OD1	1:A:324:GLU:OE2[4_446]	2.11	0.09

5.3 Torsion angles

5.3.1 Protein backbone ⓘ

In the following table, the Percentiles column shows the percent Ramachandran outliers of the chain as a percentile score with respect to all X-ray entries followed by that with respect to entries of similar resolution. The Analysed column shows the number of residues for which the backbone conformation was analysed, and the total number of residues.

Mol	Chain	Analysed	Favoured	Allowed	Outliers	Percentiles
1	A	340/358 (95%)	294 (86%)	38 (11%)	8 (2%)	9 15

All (8) Ramachandran outliers are listed below:

Mol	Chain	Res	Type
1	A	117	ASP
1	A	239	THR
1	A	175	ILE
1	A	10	TYR
1	A	196	LYS
1	A	240	ARG
1	A	52	LYS
1	A	325	GLU

5.3.2 Protein sidechains ⓘ

In the following table, the Percentiles column shows the percent sidechain outliers of the chain as a percentile score with respect to all X-ray entries followed by that with respect to entries of similar resolution. The Analysed column shows the number of residues for which the sidechain conformation was analysed, and the total number of residues.

Mol	Chain	Analysed	Rotameric	Outliers	Percentiles
1	A	300/315 (95%)	277 (92%)	23 (8%)	18 34

All (23) residues with a non-rotameric sidechain are listed below:

Mol	Chain	Res	Type
1	A	14	GLN
1	A	19	LEU
1	A	20	ASN
1	A	31	CYS
1	A	97	GLU
1	A	98	LYS
1	A	105	ASP
1	A	127	GLU
1	A	145	SER
1	A	168	ASP
1	A	173	ARG
1	A	196	LYS
1	A	197	LEU
1	A	203	VAL
1	A	207	SER
1	A	213	LEU
1	A	216	MET
1	A	238	ARG
1	A	242	ARG
1	A	244	SER
1	A	252	LYS
1	A	281	PRO
1	A	300	ARG

Some sidechains can be flipped to improve hydrogen bonding and reduce clashes. All (2) such sidechains are listed below:

Mol	Chain	Res	Type
1	A	20	ASN
1	A	234	ASN

5.3.3 RNA ⓘ

There are no RNA chains in this entry.

5.4 Non-standard residues in protein, DNA, RNA chains ⓘ

1 non-standard protein/DNA/RNA residue is modelled in this entry.

In the following table, the Counts columns list the number of bonds (or angles) for which Mogul statistics could be retrieved, the number of bonds (or angles) that are observed in the model and the number of bonds (or angles) that are defined in the chemical component dictionary. The Link column lists molecule types, if any, to which the group is linked. The Z score for a bond length (or angle) is the number of standard deviations the observed value is removed from the expected value. A bond length (or angle) with $|Z| > 2$ is considered an outlier worth inspection. RMSZ is the root-mean-square of all Z scores of the bond lengths (or angles).

Mol	Type	Chain	Res	Link	Bond lengths			Bond angles		
					Counts	RMSZ	$\# Z > 2$	Counts	RMSZ	$\# Z > 2$
3	8OG	T	5	3	23,25,26	1.20	4 (17%)	27,37,40	1.79	6 (22%)

In the following table, the Chirals column lists the number of chiral outliers, the number of chiral centers analysed, the number of these observed in the model and the number defined in the chemical component dictionary. Similar counts are reported in the Torsion and Rings columns. '-' means no outliers of that kind were identified.

Mol	Type	Chain	Res	Link	Chirals	Torsions	Rings
3	8OG	T	5	3	-	0/6/21/22	0/1/3/3

All (4) bond length outliers are listed below:

Mol	Chain	Res	Type	Atoms	Z	Observed(Å)	Ideal(Å)
3	T	5	8OG	C4-N9	-3.26	1.33	1.37
3	T	5	8OG	C2-N1	2.38	1.40	1.36
3	T	5	8OG	C6-N1	2.06	1.40	1.37
3	T	5	8OG	C6-C5	-2.01	1.37	1.41

All (6) bond angle outliers are listed below:

Mol	Chain	Res	Type	Atoms	Z	Observed(°)	Ideal(°)
3	T	5	8OG	C2-N3-C4	4.99	122.10	115.09
3	T	5	8OG	N3-C4-N9	3.57	132.51	127.09
3	T	5	8OG	O4'-C1'-N9	3.44	111.37	108.15
3	T	5	8OG	C5-C4-N9	2.94	107.46	106.00
3	T	5	8OG	C5-C4-N3	-2.61	120.01	125.70

Continued on next page...

Continued from previous page...

Mol	Chain	Res	Type	Atoms	Z	Observed(°)	Ideal(°)
3	T	5	8OG	C8-N9-C1'	-2.16	123.97	125.17

There are no chirality outliers.

There are no torsion outliers.

There are no ring outliers.

5.5 Carbohydrates i

There are no carbohydrates in this entry.

5.6 Ligand geometry i

Of 7 ligands modelled in this entry, 5 are monoatomic - leaving 2 for Mogul analysis.

In the following table, the Counts columns list the number of bonds (or angles) for which Mogul statistics could be retrieved, the number of bonds (or angles) that are observed in the model and the number of bonds (or angles) that are defined in the chemical component dictionary. The Link column lists molecule types, if any, to which the group is linked. The Z score for a bond length (or angle) is the number of standard deviations the observed value is removed from the expected value. A bond length (or angle) with $|Z| > 2$ is considered an outlier worth inspection. RMSZ is the root-mean-square of all Z scores of the bond lengths (or angles).

Mol	Type	Chain	Res	Link	Bond lengths			Bond angles		
					Counts	RMSZ	$\# Z > 2$	Counts	RMSZ	$\# Z > 2$
4	DTP	A	1001	5,4	32,32,32	2.29	6 (18%)	50,50,50	1.80	8 (16%)
4	DTP	A	1002	5,4	32,32,32	2.19	6 (18%)	50,50,50	2.69	12 (24%)

In the following table, the Chirals column lists the number of chiral outliers, the number of chiral centers analysed, the number of these observed in the model and the number defined in the chemical component dictionary. Similar counts are reported in the Torsion and Rings columns. '-' means no outliers of that kind were identified.

Mol	Type	Chain	Res	Link	Chirals	Torsions	Rings
4	DTP	A	1001	5,4	-	0/20/34/34	0/1/3/3
4	DTP	A	1002	5,4	-	0/20/34/34	0/1/3/3

All (12) bond length outliers are listed below:

Mol	Chain	Res	Type	Atoms	Z	Observed(Å)	Ideal(Å)
4	A	1001	DTP	PA-O3A	8.88	1.76	1.59

Continued on next page...

Continued from previous page...

Mol	Chain	Res	Type	Atoms	Z	Observed(Å)	Ideal(Å)
4	A	1001	DTP	PB-O3A	6.39	1.71	1.59
4	A	1002	DTP	PA-O1A	-6.25	1.27	1.51
4	A	1002	DTP	PB-O3B	5.89	1.70	1.59
4	A	1002	DTP	PB-O3A	-5.37	1.50	1.59
4	A	1002	DTP	PG-O3B	4.61	1.68	1.60
4	A	1001	DTP	PG-O3B	2.43	1.64	1.60
4	A	1002	DTP	PB-O2B	-2.29	1.44	1.55
4	A	1002	DTP	PG-O3G	-2.25	1.46	1.54
4	A	1001	DTP	O5'-C5'	2.17	1.53	1.44
4	A	1001	DTP	C4-N3	2.16	1.38	1.35
4	A	1001	DTP	PG-O2G	-2.04	1.47	1.54

All (20) bond angle outliers are listed below:

Mol	Chain	Res	Type	Atoms	Z	Observed(°)	Ideal(°)
4	A	1002	DTP	O3A-PB-O3B	12.82	127.73	101.66
4	A	1001	DTP	O3A-PA-O5'	7.13	135.31	103.41
4	A	1002	DTP	O2A-PA-O3A	5.57	131.58	105.14
4	A	1002	DTP	PB-O3B-PG	-4.79	117.63	131.68
4	A	1001	DTP	O5'-PA-O1A	-4.34	92.38	109.37
4	A	1002	DTP	O2B-PB-O3A	-4.33	84.57	105.14
4	A	1001	DTP	PB-O3B-PG	-4.25	119.21	131.68
4	A	1002	DTP	O5'-C5'-C4'	4.24	124.50	108.94
4	A	1002	DTP	O3A-PA-O1A	-4.20	81.16	111.28
4	A	1002	DTP	PA-O3A-PB	3.87	143.04	131.68
4	A	1001	DTP	PA-O3A-PB	3.77	142.74	131.68
4	A	1002	DTP	O2B-PB-O3B	3.65	122.46	105.14
4	A	1002	DTP	O5'-PA-O1A	-3.00	97.64	109.37
4	A	1001	DTP	O3A-PB-O3B	-2.52	96.54	101.66
4	A	1002	DTP	C8-N9-C1'	2.33	130.53	126.15
4	A	1001	DTP	C8-N9-C1'	2.31	130.50	126.15
4	A	1002	DTP	O2G-PG-O1G	-2.28	102.99	110.44
4	A	1002	DTP	O4'-C1'-N9	2.23	111.87	107.68
4	A	1001	DTP	O4'-C4'-C5'	2.15	117.02	109.36
4	A	1001	DTP	O3G-PG-O3B	2.09	115.04	105.14

There are no chirality outliers.

There are no torsion outliers.

There are no ring outliers.

5.7 Other polymers ⓘ

There are no such residues in this entry.

5.8 Polymer linkage issues

There are no chain breaks in this entry.

6 Fit of model and data ⓘ

6.1 Protein, DNA and RNA chains ⓘ

In the following table, the column labelled ‘#RSRZ> 2’ contains the number (and percentage) of RSRZ outliers, followed by percent RSRZ outliers for the chain as percentile scores relative to all X-ray entries and entries of similar resolution. The OWAB column contains the minimum, median, 95th percentile and maximum values of the occupancy-weighted average B-factor per residue. The column labelled ‘Q< 0.9’ lists the number of (and percentage) of residues with an average occupancy less than 0.9.

Mol	Chain	Analysed	<RSRZ>	#RSRZ>2	OWAB(Å ²)	Q<0.9
1	A	342/358 (95%)	0.18	6 (1%) 65 65	44, 75, 101, 114	50 (14%)
2	P	13/13 (100%)	-0.20	0 100 100	65, 89, 104, 109	0
3	T	15/18 (83%)	0.07	1 (6%) 17 16	54, 87, 117, 122	1 (6%)
All	All	370/389 (95%)	0.16	7 (1%) 64 62	44, 75, 104, 122	51 (13%)

All (7) RSRZ outliers are listed below:

Mol	Chain	Res	Type	RSRZ
3	T	4	DC	3.7
1	A	199	ILE	3.3
1	A	197	LEU	2.9
1	A	120	GLU	2.8
1	A	37	PHE	2.5
1	A	213	LEU	2.2
1	A	194	LEU	2.0

6.2 Non-standard residues in protein, DNA, RNA chains ⓘ

In the following table, the Atoms column lists the number of modelled atoms in the group and the number defined in the chemical component dictionary. LLDF column lists the quality of electron density of the group with respect to its neighbouring residues in protein, DNA or RNA chains. The B-factors column lists the minimum, median, 95th percentile and maximum values of B factors of atoms in the group. The column labelled ‘Q< 0.9’ lists the number of atoms with occupancy less than 0.9.

Mol	Type	Chain	Res	Atoms	RSR	LLDF	B-factors(Å ²)	Q<0.9
3	8OG	T	5	23/24	0.15	-0.46	71,79,91,95	0

6.3 Carbohydrates

There are no carbohydrates in this entry.

6.4 Ligands

In the following table, the Atoms column lists the number of modelled atoms in the group and the number defined in the chemical component dictionary. LLDF column lists the quality of electron density of the group with respect to its neighbouring residues in protein, DNA or RNA chains. The B-factors column lists the minimum, median, 95th percentile and maximum values of B factors of atoms in the group. The column labelled 'Q< 0.9' lists the number of atoms with occupancy less than 0.9.

Mol	Type	Chain	Res	Atoms	RSR	LLDF	B-factors(Å ²)	Q<0.9
4	DTP	A	1002	30/30	0.25	3.34	103,105,112,113	8
5	CA	A	2001	1/1	0.17	0.53	60,60,60,60	0
4	DTP	A	1001	30/30	0.18	0.29	82,90,92,94	0
5	CA	A	2002	1/1	0.16	-0.58	53,53,53,53	0
5	CA	A	2003	1/1	0.06	-5.10	88,88,88,88	1
5	CA	A	2005	1/1	0.18	-	110,110,110,110	1
5	CA	A	2004	1/1	0.17	-	114,114,114,114	1

6.5 Other polymers

There are no such residues in this entry.