



Full wwPDB X-ray Structure Validation Report ⓘ

Feb 28, 2014 – 01:30 PM GMT

PDB ID : 2C3M
Title : CRYSTAL STRUCTURE OF PYRUVATE-FERREDOXIN OXIDOREDUCTASE FROM DESULFOVIBRIO AFRICANUS
Authors : Cavazza, C.; Contreras-Martel, C.; Pieulle, L.; Chabriere, E.; Hatchikian, E.C.; Fontecilla-Camps, J.C.
Deposited on : 2005-10-11
Resolution : 1.84 Å(reported)

This is a full wwPDB validation report for a publicly released PDB entry.
We welcome your comments at validation@mail.wwpdb.org
A user guide is available at <http://wwpdb.org/ValidationPDFNotes.html>

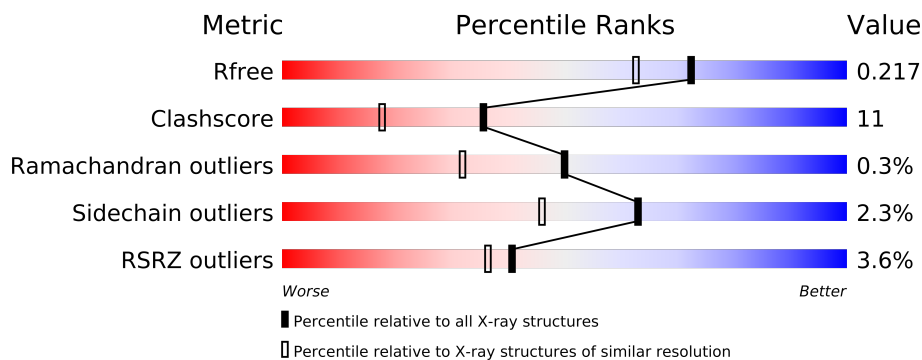
The following versions of software and data (see [references](#)) were used in the production of this report:

MolProbity : 4.02b-467
Mogul : 1.15 2013
Xtriage (Phenix) : dev-1323
EDS : stable22639
Percentile statistics : 21963
Refmac : 5.8.0049
CCP4 : 6.3.0 (Settle)
Ideal geometry (proteins) : Engh & Huber (2001)
Ideal geometry (DNA, RNA) : Parkinson et. al. (1996)
Validation Pipeline (wwPDB-VP) : stable22683

1 Overall quality at a glance

The reported resolution of this entry is 1.84 Å.

Percentile scores (ranging between 0-100) for global validation metrics of the entry are shown in the following graphic. The table shows the number of entries on which the scores are based.



Metric	Whole archive (#Entries)	Similar resolution (#Entries, resolution range(Å))
R_{free}	66092	1857 (1.86-1.82)
Clashscore	79885	2149 (1.86-1.82)
Ramachandran outliers	78287	2124 (1.86-1.82)
Sidechain outliers	78261	2125 (1.86-1.82)
RSRZ outliers	66119	1857 (1.86-1.82)

The table below summarises the geometric issues observed across the polymeric chains and their fit to the electron density. The red, orange, yellow and green segments on the lower bar indicate the fraction of residues that contain outliers for ≥ 3 , 2, 1 and 0 types of geometric quality criteria. The upper red bar (where present) indicates the fraction of residues that have poor fit to the electron density.

Mol	Chain	Length	Quality of chain
1	A	1231	
1	B	1231	

2 Entry composition i

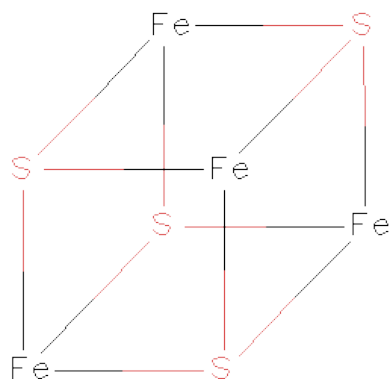
There are 7 unique types of molecules in this entry. The entry contains 20189 atoms, of which 0 are hydrogen and 0 are deuterium.

In the tables below, the ZeroOcc column contains the number of atoms modelled with zero occupancy, the AltConf column contains the number of residues with at least one atom in alternate conformation and the Trace column contains the number of residues modelled with at most 2 atoms.

- Molecule 1 is a protein called PYRUVATE-FERREDOXIN OXIDOREDUCTASE.

Mol	Chain	Residues	Atoms					ZeroOcc	AltConf	Trace
1	A	1231	Total	C	N	O	S	0	0	0
			9383	5941	1599	1784	59			
1	B	1231	Total	C	N	O	S	0	0	0
			9383	5941	1599	1784	59			

- Molecule 2 is IRON/SULFUR CLUSTER (three-letter code: SF4) (formula: Fe₄S₄).



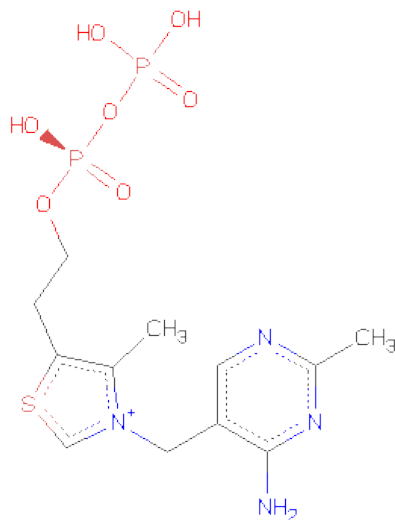
Mol	Chain	Residues	Atoms			ZeroOcc	AltConf
2	A	1	Total	Fe	S	0	0
			8	4	4		
2	A	1	Total	Fe	S	0	0
			8	4	4		
2	A	1	Total	Fe	S	0	0
			8	4	4		
2	B	1	Total	Fe	S	0	0
			8	4	4		

Continued on next page...

Continued from previous page...

Mol	Chain	Residues	Atoms			ZeroOcc	AltConf
2	B	1	Total	Fe	S	0	0
			8	4	4		
2	B	1	Total	Fe	S	0	0
			8	4	4		

- Molecule 3 is THIAMINE DIPHOSPHATE (three-letter code: TPP) (formula: $C_{12}H_{19}N_4O_7P_2S$).



Mol	Chain	Residues	Atoms						ZeroOcc	AltConf
3	A	1	Total 26	C 12	N 4	O 7	P 2	S 1	0	0
3	B	1	Total 26	C 12	N 4	O 7	P 2	S 1	0	0

- Molecule 4 is CHLORIDE ION (three-letter code: CL) (formula: Cl).

Mol	Chain	Residues	Atoms		ZeroOcc	AltConf
4	B	1	Total	Cl	0	0
			1	1		
4	A	1	Total	Cl	0	0
			1	1		

- Molecule 5 is MAGNESIUM ION (three-letter code: MG) (formula: Mg).

Mol	Chain	Residues	Atoms		ZeroOcc	AltConf
5	B	1	Total	Mg	0	0
			1	1		

Continued on next page...

Continued from previous page...

Mol	Chain	Residues	Atoms		ZeroOcc	AltConf
5	A	1	Total 1	Mg 1	0	0

- Molecule 6 is CALCIUM ION (three-letter code: CA) (formula: Ca).

Mol	Chain	Residues	Atoms		ZeroOcc	AltConf
6	B	1	Total 1	Ca 1	0	0
6	A	1	Total 1	Ca 1	0	0

- Molecule 7 is water.

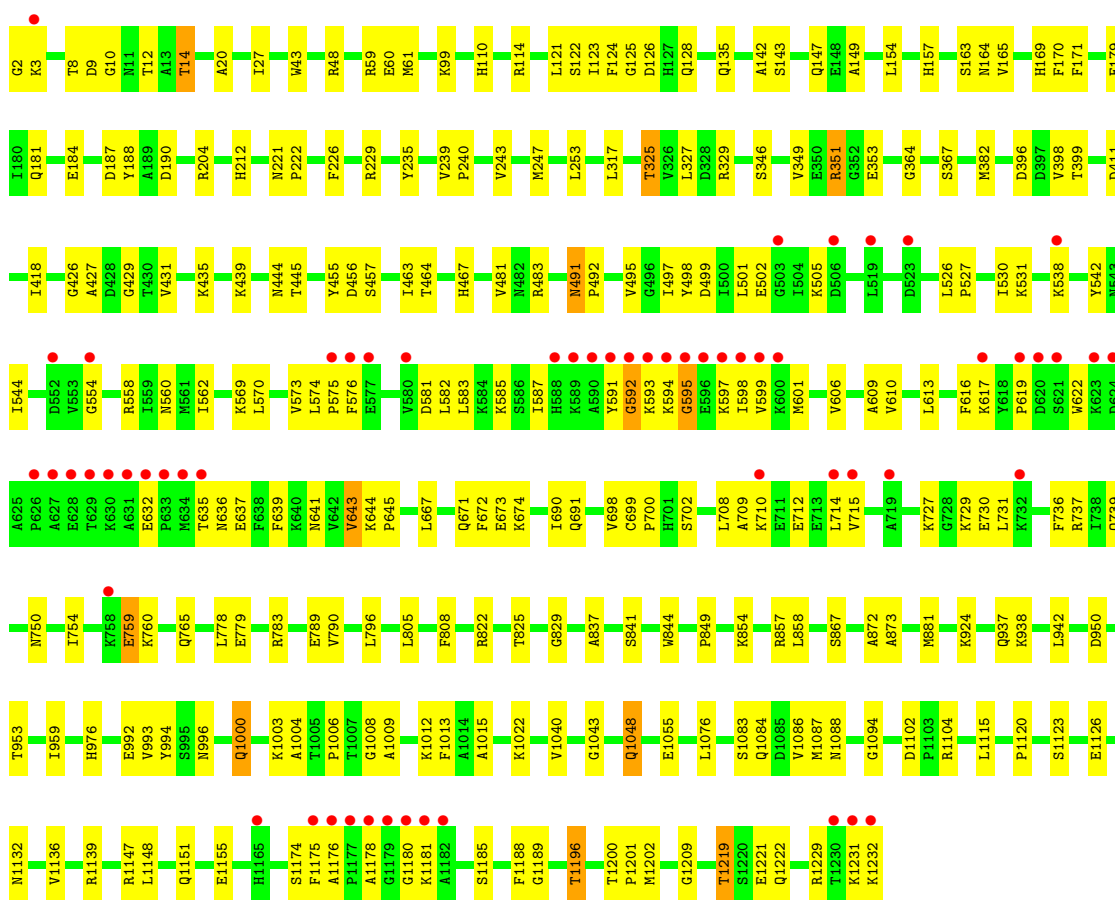
Mol	Chain	Residues	Atoms		ZeroOcc	AltConf
7	A	610	Total 610	O 610	0	0
7	B	707	Total 707	O 707	0	0

3 Residue-property plots

These plots are drawn for all protein, RNA and DNA chains in the entry. The first graphic for a chain summarises the proportions of errors displayed in the second graphic. The second graphic shows the sequence view annotated by issues in geometry and electron density. Residues are color-coded according to the number of geometric quality criteria for which they contain at least one outlier: green = 0, yellow = 1, orange = 2 and red = 3 or more. A red dot above a residue indicates a poor fit to the electron density ($RSRZ > 2$). Stretches of 2 or more consecutive residues without any outlier are shown as a green connector. Residues present in the sample, but not in the model, are shown in grey.

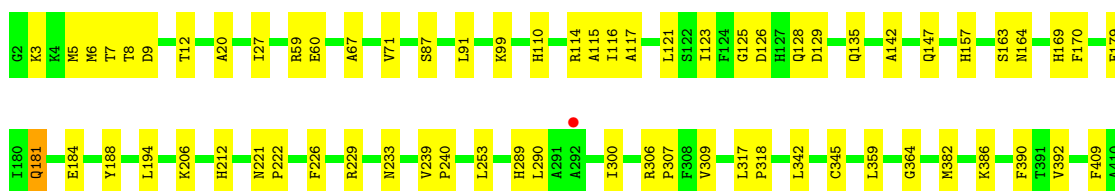
• Molecule 1: PYRUVATE-FERREDOXIN OXIDOREDUCTASE

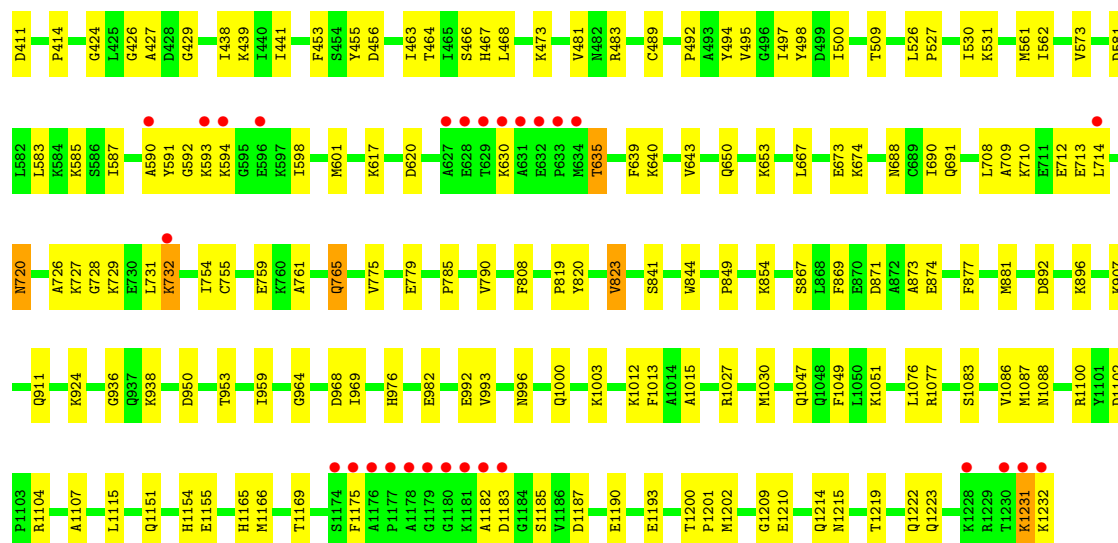
Chain A:



• Molecule 1: PYRUVATE-FERREDOXIN OXIDOREDUCTASE

Chain B:





4 Data and refinement statistics

Property	Value	Source
Space group	P 21 21 21	Depositor
Cell constants a, b, c, α , β , γ	86.02Å 146.16Å 211.74Å 90.00° 90.00° 90.00°	Depositor
Resolution (Å)	51.12 – 1.84 51.12 – 1.84	Depositor EDS
% Data completeness (in resolution range)	93.4 (51.12-1.84) 93.6 (51.12-1.84)	Depositor EDS
R_{merge}	(Not available)	Depositor
R_{sym}	0.08	Depositor
$\langle I/\sigma(I) \rangle$ ¹	3.95 (at 1.84Å)	Xtriage
Refinement program	CNS 1.1	Depositor
R, R_{free}	0.190 , 0.222 0.187 , 0.217	Depositor DCC
R_{free} test set	10737 reflections (5.23%)	DCC
Wilson B-factor (Å ²)	17.1	Xtriage
Anisotropy	0.426	Xtriage
Bulk solvent k_{sol} (e/Å ³), B_{sol} (Å ²)	0.38 , 35.4	EDS
Estimated twinning fraction	No twinning to report.	Xtriage
L-test for twinning	$\langle L \rangle = 0.46$, $\langle L^2 \rangle = 0.28$	Xtriage
Outliers	0 of 219190 reflections	Xtriage
F_o, F_c correlation	0.95	EDS
Total number of atoms	20189	wwPDB-VP
Average B, all atoms (Å ²)	23.0	wwPDB-VP

Xtriage's analysis on translational NCS is as follows: *The largest off-origin peak in the Patterson function is 3.48% of the height of the origin peak. No significant pseudotranslation is detected.*

¹Intensities estimated from amplitudes.

5 Model quality

5.1 Standard geometry

Bond lengths and bond angles in the following residue types are not validated in this section: MG, TPP, CA, SF4, CL

The Z score for a bond length (or angle) is the number of standard deviations the observed value is removed from the expected value. A bond length (or angle) with $|Z| > 5$ is considered an outlier worth inspection. RMSZ is the root-mean-square of all Z scores of the bond lengths (or angles).

Mol	Chain	Bond lengths		Bond angles	
		RMSZ	$\# Z > 5$	RMSZ	$\# Z > 5$
1	A	0.31	0/9585	0.59	2/12954 (0.0%)
1	B	0.32	0/9585	0.60	2/12954 (0.0%)
All	All	0.31	0/19170	0.60	4/25908 (0.0%)

There are no bond length outliers.

All (4) bond angle outliers are listed below:

Mol	Chain	Res	Type	Atoms	Z	Observed(°)	Ideal(°)
1	A	125	GLY	N-CA-C	5.44	126.70	113.10
1	B	364	GLY	N-CA-C	5.30	126.35	113.10
1	B	125	GLY	N-CA-C	5.24	126.19	113.10
1	A	364	GLY	N-CA-C	5.09	125.83	113.10

There are no chirality outliers.

There are no planarity outliers.

5.2 Close contacts

In the following table, the Non-H and H(model) columns list the number of non-hydrogen atoms and hydrogen atoms in the chain respectively. The H(added) column lists the number of hydrogens added by MolProbity. The Clashes column lists the number of clashes within the asymmetric unit, and the number in parentheses is this value normalized per 1000 atoms of the molecule in the chain. The Symm-Clashes column gives symmetry related clashes, in the same way as for the Clashes column.

Mol	Chain	Non-H	H(model)	H(added)	Clashes	Symm-Clashes
1	A	9383	0	9262	234	0
1	B	9383	0	9262	189	0
2	A	24	0	0	1	0

Continued on next page...

Continued from previous page...

Mol	Chain	Non-H	H(model)	H(added)	Clashes	Symm-Clashes
2	B	24	0	0	1	0
3	A	26	0	16	1	0
3	B	26	0	16	1	0
4	A	1	0	0	0	0
4	B	1	0	0	0	0
5	A	1	0	0	0	0
5	B	1	0	0	0	0
6	A	1	0	0	0	0
6	B	1	0	0	0	0
7	A	610	0	0	7	0
7	B	707	0	0	7	0
All	All	20189	0	18556	394	0

Clashscore is defined as the number of clashes calculated for the entry per 1000 atoms (including hydrogens) of the entry. The overall clashscore for this entry is 11.

All (394) close contacts within the same asymmetric unit are listed below.

Atom-1	Atom-2	Distance(Å)	Clash(Å)
1:B:1200:THR:HG22	1:B:1202:MET:H	1.17	1.09
1:A:691:GLN:HE22	1:A:727:LYS:H	1.02	1.02
1:A:639:PHE:HA	1:A:643:VAL:HG13	1.40	1.02
1:A:1200:THR:HG22	1:A:1202:MET:H	1.33	0.94
1:A:691:GLN:NE2	1:A:727:LYS:H	1.73	0.85
1:A:635:THR:HG22	1:A:636:ASN:H	1.43	0.83
1:B:635:THR:HG23	1:B:639:PHE:HB3	1.63	0.81
1:A:558:ARG:HG2	1:A:560:ASN:ND2	1.95	0.81
1:A:10:GLY:O	1:A:14:THR:HG23	1.82	0.78
1:B:110:HIS:HD2	1:B:169:HIS:HD2	1.29	0.78
1:A:1102:ASP:OD1	1:A:1104:ARG:HG2	1.84	0.77
1:B:1231:LYS:HG3	1:B:1232:LYS:H	1.49	0.76
1:B:823:VAL:HG11	1:B:1049:PHE:HE2	1.51	0.76
1:A:147:GLN:HE22	1:A:184:GLU:H	1.33	0.75
1:A:128:GLN:HE22	1:B:229:ARG:HE	1.34	0.75
1:B:635:THR:CG2	1:B:639:PHE:HB3	2.18	0.74
1:A:594:LYS:HB3	1:A:598:ILE:HD12	1.70	0.74
1:A:731:LEU:HD23	1:A:790:VAL:HG11	1.69	0.74
1:B:591:TYR:C	1:B:593:LYS:H	1.92	0.73
1:A:635:THR:HG22	1:A:636:ASN:N	2.02	0.73
1:A:691:GLN:HE22	1:A:727:LYS:N	1.84	0.72
1:A:1015:ALA:CB	1:B:1185:SER:HB2	2.19	0.72
1:A:325:THR:HG23	1:A:382:MET:SD	2.29	0.72
1:A:737:ARG:HE	1:A:739:GLN:NE2	1.88	0.72

Continued on next page...

Continued from previous page...

Atom-1	Atom-2	Distance(Å)	Clash(Å)
1:A:351:ARG:HD3	1:A:353:GLU:HB2	1.72	0.71
1:B:924:LYS:HA	1:B:953:THR:HG22	1.72	0.71
1:B:1076:LEU:HD13	1:B:1086:VAL:HG21	1.72	0.71
1:A:1185:SER:HB2	1:B:1015:ALA:HB1	1.72	0.71
1:A:110:HIS:HD2	1:A:169:HIS:HD2	1.38	0.70
1:B:1219:THR:HG23	1:B:1222:GLN:H	1.55	0.70
1:B:463:ILE:HD13	1:B:494:TYR:CE1	2.25	0.70
1:B:1102:ASP:OD1	1:B:1104:ARG:HG2	1.92	0.70
1:B:731:LEU:HD23	1:B:790:VAL:HG11	1.72	0.69
1:A:1015:ALA:HB1	1:B:1185:SER:HB2	1.73	0.69
1:A:1174:SER:H	1:B:1154:HIS:HE1	1.40	0.69
1:B:8:THR:HB	1:B:12:THR:OG1	1.92	0.69
1:B:147:GLN:HE22	1:B:184:GLU:H	1.40	0.69
1:A:635:THR:HG21	1:A:639:PHE:CD2	2.28	0.69
1:B:691:GLN:HE22	1:B:727:LYS:H	1.40	0.68
1:A:857:ARG:HG3	1:A:858:LEU:HD22	1.75	0.68
1:B:617:LYS:HE2	1:B:617:LYS:HA	1.75	0.68
7:A:2376:HOH:O	1:B:1219:THR:HG21	1.94	0.68
1:A:937:GLN:HG2	1:A:942:LEU:HB3	1.74	0.68
1:B:110:HIS:HD2	1:B:169:HIS:CD2	2.11	0.67
1:A:3:LYS:HD3	1:A:184:GLU:OE2	1.94	0.67
1:A:135:GLN:NE2	1:A:135:GLN:H	1.93	0.67
1:A:1201:PRO:HG3	1:B:455:TYR:HB2	1.76	0.67
1:A:644:LYS:HB3	1:A:645:PRO:HD3	1.76	0.66
1:A:1123:SER:O	1:A:1126:GLU:HG2	1.96	0.66
1:A:239:VAL:HG22	1:A:240:PRO:HD3	1.76	0.66
1:B:1151:GLN:O	1:B:1155:GLU:HG3	1.95	0.65
1:A:759:GLU:H	1:A:759:GLU:CD	1.98	0.65
1:A:593:LYS:HG3	1:A:594:LYS:N	2.11	0.65
1:A:593:LYS:HG3	1:A:594:LYS:H	1.61	0.65
1:B:992:GLU:O	1:B:993:VAL:HG13	1.97	0.65
1:A:591:TYR:C	1:A:593:LYS:H	2.00	0.64
1:A:1151:GLN:O	1:A:1155:GLU:HG3	1.98	0.64
1:A:709:ALA:HB3	1:A:714:LEU:HD11	1.80	0.64
1:B:877:PHE:HE1	1:B:982:GLU:HG3	1.62	0.64
1:B:691:GLN:NE2	1:B:727:LYS:H	1.95	0.64
1:B:5:MET:CE	1:B:184:GLU:HB3	2.28	0.63
1:A:1200:THR:HG23	1:A:1201:PRO:HD2	1.80	0.63
1:A:349:VAL:HG21	1:B:345:CYS:SG	2.39	0.63
1:B:1166:MET:O	1:B:1169:THR:HG22	1.98	0.63
1:B:710:LYS:HB2	1:B:712:GLU:HG2	1.80	0.63
1:A:1132:ASN:O	1:A:1136:VAL:HG22	1.99	0.63

Continued on next page...

Continued from previous page...

Atom-1	Atom-2	Distance(Å)	Clash(Å)
1:B:819:PRO:O	1:B:823:VAL:HG12	1.99	0.63
1:A:1188:PHE:HE1	1:A:1196:THR:HG23	1.63	0.63
1:B:1219:THR:HG22	1:B:1222:GLN:CG	2.30	0.62
1:A:8:THR:HB	1:A:12:THR:OG1	2.00	0.62
1:A:544:ILE:HD12	1:A:613:LEU:HD22	1.81	0.61
1:B:527:PRO:HD2	1:B:530:ILE:HD12	1.82	0.61
1:A:1231:LYS:HG3	1:A:1232:LYS:H	1.66	0.61
1:A:3:LYS:HD3	1:A:184:GLU:CD	2.22	0.61
1:A:445:THR:HG21	1:A:574:LEU:HD21	1.83	0.61
1:A:1181:LYS:HB2	1:A:1181:LYS:NZ	2.15	0.61
1:B:907:LYS:O	1:B:911:GLN:HG3	2.01	0.60
1:A:635:THR:HG23	1:A:672:PHE:CD2	2.36	0.60
1:B:164:ASN:HD22	1:B:206:LYS:NZ	1.99	0.60
1:B:775:VAL:O	1:B:779:GLU:HG2	2.01	0.60
7:A:2117:HOH:O	1:B:953:THR:HG21	2.00	0.60
1:B:650:GLN:HE21	1:B:653:LYS:HD2	1.67	0.60
1:A:976:HIS:HD2	1:B:1003:LYS:NZ	1.99	0.60
1:B:5:MET:HE1	1:B:184:GLU:HB3	1.84	0.60
1:A:1188:PHE:CE1	1:A:1196:THR:HG23	2.37	0.59
1:A:1147:ARG:HB3	1:A:1147:ARG:HH11	1.67	0.59
1:B:1232:LYS:NZ	1:B:1232:LYS:HB3	2.17	0.59
1:A:14:THR:HG21	1:A:171:PHE:CE2	2.37	0.59
1:A:499:ASP:OD2	1:A:502:GLU:HB2	2.01	0.59
1:A:491:ASN:HD22	1:A:492:PRO:HD2	1.68	0.59
1:A:635:THR:HG23	1:A:672:PHE:CG	2.38	0.59
1:B:1231:LYS:O	1:B:1232:LYS:HB2	2.03	0.59
1:A:1006:PRO:HG2	1:A:1009:ALA:HB2	1.84	0.59
1:A:737:ARG:HE	1:A:739:GLN:HE21	1.49	0.59
1:A:1147:ARG:HB3	1:A:1147:ARG:NH1	2.18	0.58
1:B:1107:ALA:HB2	1:B:1175:PHE:HB3	1.85	0.58
1:B:1200:THR:HG23	1:B:1201:PRO:HD2	1.86	0.58
1:B:594:LYS:NZ	1:B:594:LYS:HB3	2.19	0.58
1:B:239:VAL:HB	1:B:240:PRO:HD3	1.86	0.58
1:A:99:LYS:HE3	1:B:867:SER:O	2.04	0.58
1:A:142:ALA:HB2	1:A:170:PHE:CZ	2.39	0.58
1:A:639:PHE:HA	1:A:643:VAL:CG1	2.26	0.58
1:A:110:HIS:HD2	1:A:169:HIS:CD2	2.21	0.58
1:A:1185:SER:HB2	1:B:1015:ALA:CB	2.34	0.57
1:B:110:HIS:CD2	1:B:169:HIS:HD2	2.17	0.57
1:A:737:ARG:HH11	1:A:739:GLN:HE22	1.53	0.57
1:A:1232:LYS:NZ	1:A:1232:LYS:HB3	2.20	0.57
1:A:583:LEU:O	1:A:587:ILE:HG13	2.04	0.57

Continued on next page...

Continued from previous page...

Atom-1	Atom-2	Distance(Å)	Clash(Å)
1:A:14:THR:HG22	1:A:149:ALA:HB1	1.86	0.57
1:A:581:ASP:OD2	1:A:585:LYS:HE3	2.05	0.57
1:A:143:SER:OG	1:A:171:PHE:HB3	2.05	0.57
1:A:43:TRP:HB3	1:A:48:ARG:HD3	1.87	0.57
1:A:992:GLU:O	1:A:993:VAL:HG13	2.05	0.57
1:A:731:LEU:CD2	1:A:790:VAL:HG11	2.35	0.56
1:B:635:THR:HG21	1:B:639:PHE:HD2	1.69	0.56
1:B:164:ASN:HD22	1:B:206:LYS:HZ1	1.51	0.56
1:A:710:LYS:NZ	1:A:710:LYS:HB2	2.20	0.56
1:A:1174:SER:H	1:B:1154:HIS:CE1	2.23	0.56
1:A:467:HIS:HD2	1:A:481:VAL:H	1.53	0.56
1:A:873:ALA:HA	1:A:959:ILE:HD13	1.87	0.56
1:A:1219:THR:HG21	7:B:2455:HOH:O	2.05	0.56
1:A:444:ASN:HB2	1:A:582:LEU:HD21	1.86	0.56
1:A:609:ALA:O	1:A:613:LEU:HD23	2.07	0.55
1:B:598:ILE:HD13	1:B:601:MET:HE2	1.87	0.55
1:B:233:ASN:HB2	7:B:2138:HOH:O	2.07	0.55
1:A:953:THR:HG21	7:B:2118:HOH:O	2.05	0.55
1:B:91:LEU:HD11	1:B:116:ILE:HD12	1.89	0.55
1:B:110:HIS:HE1	1:B:157:HIS:NE2	2.04	0.55
1:B:591:TYR:O	1:B:593:LYS:N	2.39	0.55
1:A:1136:VAL:HG12	1:A:1139:ARG:NH1	2.22	0.55
1:A:554:GLY:HA3	1:A:601:MET:HE2	1.88	0.55
1:A:635:THR:CG2	1:A:636:ASN:H	2.17	0.55
1:A:59:ARG:HB2	1:B:881:MET:HE3	1.88	0.54
1:A:467:HIS:CD2	1:A:481:VAL:H	2.25	0.54
1:A:398:VAL:HG23	1:A:399:THR:N	2.22	0.54
1:B:463:ILE:HD12	1:B:464:THR:H	1.72	0.54
1:B:414:PRO:HB3	1:B:473:LYS:HD2	1.89	0.54
1:B:591:TYR:C	1:B:593:LYS:N	2.61	0.54
1:B:1210:GLU:HG3	7:B:2695:HOH:O	2.08	0.54
1:B:630:LYS:O	1:B:630:LYS:HG3	2.08	0.54
1:A:698:VAL:HG13	1:A:1084:GLN:NE2	2.23	0.53
1:A:1189:GLY:HA3	1:A:1196:THR:HG21	1.90	0.53
1:A:431:VAL:CG2	1:A:464:THR:HG21	2.39	0.53
1:A:1231:LYS:HG3	1:A:1232:LYS:N	2.23	0.53
1:B:729:LYS:O	1:B:732:LYS:HG3	2.08	0.53
1:A:121:LEU:HD23	1:A:122:SER:N	2.24	0.53
1:A:1200:THR:HG22	1:A:1202:MET:N	2.14	0.53
1:A:558:ARG:HG2	1:A:560:ASN:HD22	1.70	0.53
1:A:597:LYS:O	1:A:601:MET:HG3	2.09	0.52
1:A:1015:ALA:HB3	1:B:1185:SER:HB2	1.90	0.52

Continued on next page...

Continued from previous page...

Atom-1	Atom-2	Distance(Å)	Clash(Å)
1:A:562:ILE:HD12	1:A:562:ILE:N	2.24	0.52
1:A:1008:GLY:HA2	1:A:1148:LEU:HD13	1.92	0.52
1:A:708:LEU:HD21	1:A:731:LEU:HD22	1.91	0.52
1:B:820:TYR:O	1:B:823:VAL:HG13	2.10	0.52
1:B:142:ALA:HB2	1:B:170:PHE:CZ	2.45	0.52
1:B:708:LEU:HD21	1:B:731:LEU:HD22	1.92	0.52
1:A:444:ASN:CB	1:A:582:LEU:HD21	2.41	0.52
1:A:805:LEU:HD12	1:A:829:GLY:HA3	1.91	0.52
1:A:1132:ASN:ND2	1:A:1136:VAL:CG1	2.72	0.51
1:B:1051:LYS:HE2	1:B:1100:ARG:NH1	2.25	0.51
1:B:463:ILE:HD12	1:B:464:THR:N	2.25	0.51
1:A:635:THR:CG2	1:A:636:ASN:N	2.73	0.51
1:A:924:LYS:HA	1:A:953:THR:HG22	1.92	0.51
1:A:1076:LEU:HD13	1:A:1086:VAL:HG21	1.93	0.51
1:A:593:LYS:CG	1:A:594:LYS:H	2.24	0.51
1:A:163:SER:HB2	1:A:239:VAL:HG12	1.93	0.51
1:A:235:TYR:O	1:A:239:VAL:HG13	2.11	0.50
1:A:2:GLY:N	1:A:187:ASP:OD2	2.45	0.50
1:B:497:ILE:HG13	1:B:498:TYR:CD1	2.46	0.50
1:A:128:GLN:NE2	1:B:229:ARG:HE	2.03	0.50
1:A:730:GLU:CD	1:A:730:GLU:H	2.15	0.50
1:B:1219:THR:HG22	1:B:1222:GLN:HG3	1.91	0.50
1:B:1187:ASP:HB3	1:B:1190:GLU:HG3	1.92	0.50
1:B:424:GLY:O	1:B:463:ILE:HD12	2.11	0.50
1:B:9:ASP:OD2	1:B:12:THR:HG23	2.10	0.50
1:A:411:ASP:HB2	1:A:483:ARG:HD2	1.92	0.50
1:B:823:VAL:CG1	1:B:1049:PHE:HE2	2.21	0.50
1:B:229:ARG:HD2	7:B:2137:HOH:O	2.12	0.50
1:A:698:VAL:HG11	1:A:1084:GLN:HG3	1.93	0.50
1:A:121:LEU:C	1:A:121:LEU:HD23	2.32	0.50
1:A:805:LEU:HB2	1:A:825:THR:HB	1.92	0.50
1:A:3:LYS:HE2	1:A:253:LEU:O	2.12	0.49
1:A:1219:THR:HG22	1:A:1222:GLN:H	1.77	0.49
1:B:709:ALA:HB3	1:B:714:LEU:HD21	1.93	0.49
1:A:1055:GLU:O	1:A:1104:ARG:NH1	2.44	0.49
1:A:483:ARG:O	1:A:505:LYS:HE3	2.13	0.49
1:B:317:LEU:HD13	1:B:318:PRO:O	2.12	0.49
1:A:841:SER:HA	1:A:844:TRP:CE2	2.47	0.49
1:B:390:PHE:CE1	1:B:392:VAL:HG23	2.47	0.49
1:B:561:MET:HE3	1:B:561:MET:O	2.12	0.49
1:A:1200:THR:HG21	1:A:1202:MET:CE	2.43	0.49
1:B:691:GLN:HE22	1:B:726:ALA:HA	1.75	0.49

Continued on next page...

Continued from previous page...

Atom-1	Atom-2	Distance(Å)	Clash(Å)
1:B:164:ASN:ND2	1:B:206:LYS:NZ	2.61	0.49
1:B:936:GLY:O	1:B:938:LYS:HG2	2.11	0.49
1:A:702:SER:HB2	1:A:822:ARG:HD2	1.94	0.49
1:A:606:VAL:O	1:A:610:VAL:HG23	2.12	0.49
1:A:544:ILE:HD12	1:A:613:LEU:CD2	2.42	0.49
1:A:396:ASP:OD2	1:A:398:VAL:HG22	2.13	0.49
1:A:124:PHE:HB3	1:A:367:SER:HB2	1.94	0.49
1:A:526:LEU:O	1:A:531:LYS:HE3	2.12	0.49
1:B:667:LEU:HB3	1:B:854:LYS:HA	1.94	0.49
1:A:325:THR:CG2	1:A:382:MET:SD	3.01	0.49
1:A:1175:PHE:CD2	1:B:1151:GLN:HG3	2.48	0.49
1:A:1180:GLY:O	1:A:1181:LYS:HB2	2.13	0.49
1:A:1219:THR:HG23	7:A:2605:HOH:O	2.13	0.49
1:B:221:ASN:HB3	1:B:222:PRO:CD	2.43	0.49
1:A:325:THR:HG21	7:A:3239:HOH:O	2.13	0.49
1:B:492:PRO:O	1:B:495:VAL:HG22	2.12	0.48
1:B:489:CYS:SG	1:B:500:ILE:HD13	2.53	0.48
1:A:750:ASN:HD21	1:A:1083:SER:HB2	1.78	0.48
1:A:976:HIS:HD2	1:B:1003:LYS:HZ2	1.61	0.48
1:B:20:ALA:HB2	1:B:188:TYR:CZ	2.48	0.48
1:A:1003:LYS:NZ	1:B:976:HIS:HD2	2.12	0.48
1:A:1040:VAL:HG12	1:A:1048:GLN:HE22	1.77	0.48
1:A:591:TYR:O	1:A:593:LYS:N	2.45	0.48
1:B:6:MET:HE2	1:B:8:THR:OG1	2.13	0.48
1:B:290:LEU:HD11	1:B:409:PHE:HZ	1.79	0.48
1:B:841:SER:HA	1:B:844:TRP:CE2	2.48	0.48
1:A:1209:GLY:O	1:B:429:GLY:HA2	2.13	0.48
1:B:390:PHE:CD1	1:B:392:VAL:HG23	2.48	0.48
1:A:594:LYS:HG2	1:A:595:GLY:H	1.77	0.48
1:A:526:LEU:HD11	1:A:530:ILE:HG21	1.96	0.48
1:A:20:ALA:HB2	1:A:188:TYR:CZ	2.49	0.48
1:A:796:LEU:HD23	1:A:796:LEU:C	2.34	0.48
1:B:121:LEU:HD23	1:B:121:LEU:C	2.34	0.48
1:A:455:TYR:HB2	1:B:1201:PRO:HD3	1.96	0.47
1:A:497:ILE:HG13	1:A:498:TYR:CD1	2.50	0.47
1:B:873:ALA:HA	1:B:959:ILE:HD13	1.96	0.47
1:A:591:TYR:C	1:A:593:LYS:N	2.68	0.47
1:A:110:HIS:HE1	1:A:157:HIS:NE2	2.12	0.47
1:B:526:LEU:O	1:B:531:LYS:HE3	2.15	0.47
1:A:346:SER:HA	1:A:349:VAL:HG22	1.97	0.47
1:A:1004:ALA:O	1:A:1022:LYS:HG3	2.15	0.47
1:A:643:VAL:HB	1:A:849:PRO:HB2	1.96	0.47

Continued on next page...

Continued from previous page...

Atom-1	Atom-2	Distance(Å)	Clash(Å)
1:A:239:VAL:CG2	1:A:240:PRO:HD3	2.45	0.46
1:B:27:ILE:HD11	1:B:1013:PHE:CE2	2.50	0.46
1:B:635:THR:HG22	1:B:640:LYS:HG3	1.96	0.46
1:A:1132:ASN:CG	1:A:1136:VAL:HG13	2.36	0.46
1:A:9:ASP:HA	1:A:179:GLU:O	2.15	0.46
1:B:765:GLN:HE21	1:B:765:GLN:HA	1.80	0.46
1:A:426:GLY:O	1:A:427:ALA:HB3	2.16	0.46
1:B:7:THR:O	1:B:8:THR:HG23	2.14	0.46
1:A:992:GLU:O	1:A:993:VAL:CG1	2.64	0.46
1:B:1193:GLU:OE2	1:B:1193:GLU:N	2.48	0.46
1:A:2:GLY:HA2	1:A:190:ASP:OD2	2.16	0.46
1:A:1083:SER:O	1:A:1087:MET:HG3	2.16	0.46
1:B:135:GLN:NE2	1:B:135:GLN:H	2.12	0.46
1:B:720:ASN:HD22	1:B:720:ASN:N	2.14	0.46
1:B:67:ALA:O	1:B:71:VAL:HG23	2.16	0.46
1:B:184:GLU:HG3	7:B:2096:HOH:O	2.15	0.46
1:A:542:TYR:CD2	1:A:570:LEU:HD21	2.51	0.46
1:B:3:LYS:HE2	1:B:253:LEU:O	2.15	0.46
1:A:435:LYS:O	1:A:439:LYS:HD3	2.16	0.46
1:B:1219:THR:CG2	1:B:1222:GLN:HG3	2.47	0.45
1:B:1200:THR:HG22	1:B:1202:MET:N	2.03	0.45
1:A:165:VAL:HG21	1:A:239:VAL:HG11	1.97	0.45
1:A:671:GLN:NE2	1:A:854:LYS:HD2	2.31	0.45
1:A:881:MET:HE3	1:B:59:ARG:HB2	1.97	0.45
1:B:590:ALA:O	1:B:591:TYR:C	2.55	0.45
1:B:731:LEU:CD2	1:B:790:VAL:HG11	2.41	0.45
1:B:710:LYS:HG3	1:B:713:GLU:OE2	2.16	0.45
1:B:495:VAL:HA	1:B:500:ILE:HD12	1.99	0.45
1:B:720:ASN:H	1:B:720:ASN:ND2	2.15	0.45
1:A:667:LEU:HB3	1:A:854:LYS:HA	1.98	0.45
1:B:114:ARG:NE	1:B:123:ILE:HA	2.31	0.45
1:A:99:LYS:HE2	1:B:117:ALA:HB1	1.98	0.45
1:B:562:ILE:HD12	1:B:562:ILE:N	2.30	0.45
1:B:823:VAL:HG11	1:B:1049:PHE:CE2	2.41	0.45
1:A:709:ALA:CB	1:A:714:LEU:HD11	2.46	0.45
1:A:398:VAL:HG23	1:A:399:THR:H	1.82	0.45
1:A:243:VAL:O	1:A:247:MET:HG3	2.17	0.45
1:B:992:GLU:O	1:B:993:VAL:CG1	2.65	0.45
1:A:1189:GLY:CA	1:A:1196:THR:HG21	2.47	0.45
1:B:240:PRO:HB3	1:B:309:VAL:HG21	1.99	0.45
1:A:754:ILE:C	1:A:754:ILE:HD12	2.38	0.45
1:A:867:SER:O	1:B:99:LYS:HE3	2.16	0.45

Continued on next page...

Continued from previous page...

Atom-1	Atom-2	Distance(Å)	Clash(Å)
1:B:635:THR:HG21	1:B:639:PHE:CD2	2.50	0.45
1:A:163:SER:O	1:A:164:ASN:HB2	2.17	0.45
1:A:20:ALA:HB2	1:A:188:TYR:CE1	2.52	0.45
1:B:871:ASP:O	1:B:874:GLU:HG2	2.17	0.45
1:A:491:ASN:HD22	1:A:492:PRO:CD	2.29	0.44
3:B:2236:TPP:H2	3:B:2236:TPP:HN42	1.82	0.44
1:A:221:ASN:HB3	1:A:222:PRO:CD	2.48	0.44
1:B:426:GLY:O	1:B:427:ALA:HB3	2.17	0.44
1:A:950:ASP:OD2	1:B:212:HIS:HE1	2.00	0.44
1:A:27:ILE:HB	7:A:2051:HOH:O	2.18	0.44
1:B:441:ILE:HD13	1:B:573:VAL:HG11	1.98	0.44
1:A:1181:LYS:HZ2	1:A:1181:LYS:HB2	1.79	0.44
1:A:690:ILE:HG12	2:A:2233:SF4:S2	2.58	0.44
1:B:87:SER:HA	1:B:129:ASP:HB3	1.98	0.44
1:A:699:CYS:HA	1:A:700:PRO:HD3	1.84	0.44
1:B:1219:THR:CG2	1:B:1222:GLN:H	2.26	0.44
1:B:727:LYS:HG3	1:B:728:GLY:N	2.31	0.44
1:A:1043:GLY:HA3	1:A:1087:MET:HB2	1.99	0.44
1:A:1132:ASN:ND2	1:A:1136:VAL:HG13	2.32	0.44
1:A:698:VAL:O	1:A:698:VAL:HG12	2.18	0.44
1:B:411:ASP:HB2	1:B:483:ARG:HD2	2.00	0.44
1:B:1214:GLN:O	1:B:1215:ASN:HB2	2.17	0.44
1:A:418:ILE:HD12	1:A:573:VAL:HA	1.98	0.44
1:B:1219:THR:O	1:B:1223:GLN:HG3	2.18	0.43
1:B:713:GLU:OE1	1:B:785:PRO:HD2	2.18	0.43
3:A:2236:TPP:HN42	3:A:2236:TPP:H2	1.83	0.43
1:B:690:ILE:HG12	2:B:2233:SF4:S2	2.58	0.43
1:A:858:LEU:N	1:A:858:LEU:HD22	2.33	0.43
1:A:60:GLU:O	1:B:976:HIS:HE1	2.00	0.43
1:A:569:LYS:HG3	1:A:576:PHE:CD2	2.54	0.43
1:A:495:VAL:HG12	1:A:527:PRO:CD	2.49	0.43
1:A:765:GLN:HA	1:A:765:GLN:HE21	1.82	0.43
1:A:1000:GLN:H	1:A:1000:GLN:NE2	2.17	0.43
1:A:1229:ARG:HH12	1:B:765:GLN:HE22	1.66	0.43
1:A:779:GLU:O	1:A:783:ARG:HD3	2.19	0.43
1:A:456:ASP:OD2	1:A:457:SER:N	2.52	0.43
1:A:1200:THR:HG23	1:A:1201:PRO:CD	2.45	0.43
1:B:1083:SER:O	1:B:1087:MET:HG3	2.19	0.43
1:A:837:ALA:HB2	1:A:872:ALA:HB2	2.00	0.43
1:A:592:GLY:HA2	1:A:599:VAL:CG2	2.49	0.43
1:A:635:THR:HG22	1:A:639:PHE:HB3	2.01	0.42
1:A:976:HIS:HE1	1:B:60:GLU:O	2.02	0.42

Continued on next page...

Continued from previous page...

Atom-1	Atom-2	Distance(Å)	Clash(Å)
1:A:710:LYS:HZ2	1:A:710:LYS:HB2	1.83	0.42
1:A:730:GLU:CD	1:A:730:GLU:N	2.73	0.42
1:A:1000:GLN:HA	1:A:1012:LYS:HB2	2.00	0.42
1:B:453:PHE:HD2	1:B:466:SER:HG	1.67	0.42
1:B:456:ASP:OD1	1:B:463:ILE:HG22	2.18	0.42
1:A:483:ARG:HG2	1:A:483:ARG:HH11	1.84	0.42
1:A:229:ARG:HD2	7:B:2065:HOH:O	2.19	0.42
1:A:1200:THR:HG21	1:A:1202:MET:HE3	2.00	0.42
1:A:126:ASP:HB2	1:A:329:ARG:HG2	2.01	0.42
1:A:636:ASN:HD22	1:A:672:PHE:HE1	1.63	0.42
1:B:1027:ARG:HA	1:B:1030:MET:HE3	2.00	0.42
1:B:755:CYS:SG	1:B:761:ALA:HB3	2.60	0.42
1:A:691:GLN:HG2	1:A:736:PHE:CD2	2.54	0.42
1:B:306:ARG:HA	1:B:307:PRO:C	2.40	0.42
1:A:1012:LYS:O	1:A:1013:PHE:HB2	2.20	0.42
1:A:501:LEU:HD11	1:A:530:ILE:HG23	2.02	0.42
1:A:616:PHE:HB2	7:A:2313:HOH:O	2.20	0.42
1:A:712:GLU:O	1:A:715:VAL:HG23	2.20	0.42
1:B:1232:LYS:HB3	1:B:1232:LYS:HZ3	1.85	0.42
1:B:9:ASP:HA	1:B:179:GLU:O	2.20	0.41
1:A:1132:ASN:HD21	1:A:1136:VAL:CG1	2.33	0.41
1:A:778:LEU:C	1:A:778:LEU:HD13	2.40	0.41
1:A:538:LYS:HD2	1:A:538:LYS:N	2.35	0.41
1:A:346:SER:O	1:A:349:VAL:HG22	2.20	0.41
1:A:1232:LYS:HZ2	1:A:1232:LYS:HB3	1.86	0.41
1:B:300:ILE:HD11	1:B:317:LEU:HD23	2.00	0.41
1:B:317:LEU:HA	1:B:318:PRO:HD3	1.95	0.41
1:A:221:ASN:HB3	1:A:222:PRO:HD2	2.02	0.41
7:A:2581:HOH:O	1:B:1077:ARG:HG2	2.19	0.41
1:B:892:ASP:OD2	1:B:896:LYS:NZ	2.52	0.41
1:A:1102:ASP:CG	1:A:1104:ARG:HE	2.23	0.41
1:A:1175:PHE:CD2	1:A:1176:ALA:N	2.88	0.41
1:B:438:ILE:HD11	1:B:468:LEU:HD22	2.02	0.41
1:B:581:ASP:O	1:B:585:LYS:HG2	2.20	0.41
1:B:594:LYS:HZ2	1:B:594:LYS:HB3	1.85	0.41
1:A:1094:GLY:HA3	1:A:1120:PRO:HG3	2.03	0.41
1:A:114:ARG:NE	1:A:123:ILE:HA	2.35	0.41
1:A:429:GLY:HA2	1:B:1209:GLY:O	2.21	0.41
1:A:976:HIS:CD2	1:B:1003:LYS:HZ2	2.39	0.41
1:A:729:LYS:HB3	1:A:730:GLU:OE2	2.21	0.41
1:B:720:ASN:HD22	1:B:720:ASN:H	1.69	0.41
1:A:673:GLU:O	1:A:674:LYS:C	2.58	0.41

Continued on next page...

Continued from previous page...

Atom-1	Atom-2	Distance(Å)	Clash(Å)
1:A:617:LYS:HD3	1:A:617:LYS:HA	1.92	0.41
1:A:593:LYS:CG	1:A:594:LYS:N	2.76	0.41
1:A:759:GLU:CD	1:A:759:GLU:N	2.72	0.41
1:B:650:GLN:HE22	1:B:653:LYS:NZ	2.18	0.41
1:A:994:TYR:HB2	1:A:1000:GLN:HE21	1.85	0.41
1:B:964:GLY:O	1:B:968:ASP:HB2	2.21	0.41
1:B:593:LYS:HG2	1:B:593:LYS:O	2.20	0.41
1:A:937:GLN:C	1:A:938:LYS:HD2	2.40	0.41
1:B:289:HIS:ND1	1:B:290:LEU:HD12	2.36	0.41
1:B:639:PHE:HA	1:B:643:VAL:HB	2.03	0.41
1:B:494:TYR:HB3	1:B:500:ILE:HD11	2.03	0.41
1:B:163:SER:O	1:B:164:ASN:HB2	2.20	0.41
1:B:714:LEU:N	1:B:714:LEU:HD22	2.35	0.41
1:B:20:ALA:HB2	1:B:188:TYR:CE1	2.56	0.41
1:A:61:MET:HA	1:B:976:HIS:CE1	2.56	0.41
1:A:229:ARG:HE	1:B:128:GLN:HE22	1.68	0.41
1:B:181:GLN:HB3	1:B:181:GLN:HE21	1.63	0.41
1:A:1219:THR:HG22	1:A:1221:GLU:N	2.34	0.41
1:A:575:PRO:O	1:A:576:PHE:C	2.59	0.41
1:B:7:THR:HG21	1:B:439:LYS:HA	2.03	0.40
1:B:673:GLU:O	1:B:674:LYS:C	2.58	0.40
1:B:467:HIS:CD2	1:B:481:VAL:H	2.40	0.40
1:B:1012:LYS:O	1:B:1013:PHE:HB2	2.21	0.40
1:A:212:HIS:HE1	1:B:950:ASP:OD2	2.03	0.40
1:B:869:PHE:CE2	1:B:969:ILE:HG21	2.55	0.40
1:B:7:THR:HG23	1:B:7:THR:O	2.22	0.40
1:B:221:ASN:HB3	1:B:222:PRO:HD2	2.02	0.40
1:B:382:MET:O	1:B:386:LYS:NZ	2.54	0.40
1:B:115:ALA:HB2	1:B:126:ASP:OD1	2.21	0.40
1:A:619:PRO:HG2	1:A:622:TRP:CD1	2.57	0.40
1:B:587:ILE:O	1:B:590:ALA:O	2.40	0.40
1:B:1219:THR:HG22	1:B:1222:GLN:CD	2.42	0.40
1:A:637:GLU:HG3	1:A:641:ASN:HD22	1.86	0.40
1:B:688:ASN:HB3	1:B:759:GLU:O	2.20	0.40

There are no symmetry-related clashes.

5.3 Torsion angles

5.3.1 Protein backbone ⓘ

In the following table, the Percentiles column shows the percent Ramachandran outliers of the chain as a percentile score with respect to all X-ray entries followed by that with respect to entries of similar resolution. The Analysed column shows the number of residues for which the backbone conformation was analysed, and the total number of residues.

Mol	Chain	Analysed	Favoured	Allowed	Outliers	Percentiles	
1	A	1229/1231 (100%)	1181 (96%)	44 (4%)	4 (0%)	50	32
1	B	1229/1231 (100%)	1184 (96%)	41 (3%)	4 (0%)	50	32
All	All	2458/2462 (100%)	2365 (96%)	85 (4%)	8 (0%)	50	32

All (8) Ramachandran outliers are listed below:

Mol	Chain	Res	Type
1	A	1178	ALA
1	A	595	GLY
1	B	732	LYS
1	B	1231	LYS
1	B	1182	ALA
1	A	760	LYS
1	B	592	GLY
1	A	592	GLY

5.3.2 Protein sidechains ⓘ

In the following table, the Percentiles column shows the percent sidechain outliers of the chain as a percentile score with respect to all X-ray entries followed by that with respect to entries of similar resolution. The Analysed column shows the number of residues for which the sidechain conformation was analysed, and the total number of residues.

Mol	Chain	Analysed	Rotameric	Outliers	Percentiles	
1	A	978/978 (100%)	955 (98%)	23 (2%)	61	44
1	B	978/978 (100%)	956 (98%)	22 (2%)	64	48
All	All	1956/1956 (100%)	1911 (98%)	45 (2%)	63	46

All (45) residues with a non-rotameric sidechain are listed below:

Mol	Chain	Res	Type
1	A	14	THR

Continued on next page...

Continued from previous page...

Mol	Chain	Res	Type
1	A	154	LEU
1	A	181	GLN
1	A	204	ARG
1	A	226	PHE
1	A	317	LEU
1	A	325	THR
1	A	327	LEU
1	A	351	ARG
1	A	463	ILE
1	A	491	ASN
1	A	632	GLU
1	A	643	VAL
1	A	759	GLU
1	A	789	GLU
1	A	808	PHE
1	A	996	ASN
1	A	1000	GLN
1	A	1048	GLN
1	A	1088	ASN
1	A	1115	LEU
1	A	1196	THR
1	A	1219	THR
1	B	181	GLN
1	B	194	LEU
1	B	226	PHE
1	B	342	LEU
1	B	359	LEU
1	B	509	THR
1	B	583	LEU
1	B	620	ASP
1	B	635	THR
1	B	720	ASN
1	B	754	ILE
1	B	765	GLN
1	B	808	PHE
1	B	823	VAL
1	B	849	PRO
1	B	996	ASN
1	B	1000	GLN
1	B	1047	GLN
1	B	1088	ASN
1	B	1115	LEU

Continued on next page...

Continued from previous page...

Mol	Chain	Res	Type
1	B	1165	HIS
1	B	1183	ASP

Some sidechains can be flipped to improve hydrogen bonding and reduce clashes. All (73) such sidechains are listed below:

Mol	Chain	Res	Type
1	A	11	ASN
1	A	16	HIS
1	A	46	GLN
1	A	96	ASN
1	A	110	HIS
1	A	128	GLN
1	A	135	GLN
1	A	147	GLN
1	A	164	ASN
1	A	169	HIS
1	A	181	GLN
1	A	212	HIS
1	A	220	GLN
1	A	389	HIS
1	A	421	GLN
1	A	434	ASN
1	A	467	HIS
1	A	491	ASN
1	A	513	ASN
1	A	536	ASN
1	A	560	ASN
1	A	602	ASN
1	A	641	ASN
1	A	683	GLN
1	A	688	ASN
1	A	691	GLN
1	A	720	ASN
1	A	739	GLN
1	A	750	ASN
1	A	765	GLN
1	A	777	ASN
1	A	836	ASN
1	A	866	ASN
1	A	937	GLN
1	A	976	HIS
1	A	996	ASN

Continued on next page...

Continued from previous page...

Mol	Chain	Res	Type
1	A	1000	GLN
1	A	1048	GLN
1	A	1088	ASN
1	A	1108	GLN
1	A	1170	ASN
1	B	11	ASN
1	B	16	HIS
1	B	46	GLN
1	B	110	HIS
1	B	128	GLN
1	B	135	GLN
1	B	147	GLN
1	B	164	ASN
1	B	169	HIS
1	B	181	GLN
1	B	212	HIS
1	B	220	GLN
1	B	421	GLN
1	B	434	ASN
1	B	467	HIS
1	B	650	GLN
1	B	688	ASN
1	B	691	GLN
1	B	720	ASN
1	B	750	ASN
1	B	765	GLN
1	B	777	ASN
1	B	836	ASN
1	B	866	ASN
1	B	976	HIS
1	B	996	ASN
1	B	1000	GLN
1	B	1073	ASN
1	B	1084	GLN
1	B	1088	ASN
1	B	1108	GLN
1	B	1154	HIS

5.3.3 RNA ⓘ

There are no RNA chains in this entry.

5.4 Non-standard residues in protein, DNA, RNA chains ⓘ

There are no non-standard protein/DNA/RNA residues in this entry.

5.5 Carbohydrates ⓘ

There are no carbohydrates in this entry.

5.6 Ligand geometry ⓘ

Of 14 ligands modelled in this entry, 6 are monoatomic - leaving 8 for Mogul analysis.

In the following table, the Counts columns list the number of bonds (or angles) for which Mogul statistics could be retrieved, the number of bonds (or angles) that are observed in the model and the number of bonds (or angles) that are defined in the chemical component dictionary. The Link column lists molecule types, if any, to which the group is linked. The Z score for a bond length (or angle) is the number of standard deviations the observed value is removed from the expected value. A bond length (or angle) with $|Z| > 2$ is considered an outlier worth inspection. RMSZ is the root-mean-square of all Z scores of the bond lengths (or angles).

Mol	Type	Chain	Res	Link	Bond lengths			Bond angles		
					Counts	RMSZ	# $ Z > 2$	Counts	RMSZ	# $ Z > 2$
2	SF4	A	2233	1	12,12,12	4.69	10 (83%)	0,24,24	0.00	-
2	SF4	A	2234	1	12,12,12	4.38	10 (83%)	0,24,24	0.00	-
2	SF4	A	2235	1	12,12,12	5.26	12 (100%)	0,24,24	0.00	-
3	TPP	A	2236	5	27,27,27	2.55	11 (40%)	40,40,40	1.91	6 (15%)
2	SF4	B	2233	1	12,12,12	4.66	12 (100%)	0,24,24	0.00	-
2	SF4	B	2234	1	12,12,12	4.90	11 (91%)	0,24,24	0.00	-
2	SF4	B	2235	1	12,12,12	5.76	12 (100%)	0,24,24	0.00	-
3	TPP	B	2236	5	27,27,27	2.55	8 (29%)	40,40,40	1.86	8 (20%)

In the following table, the Chirals column lists the number of chiral outliers, the number of chiral centers analysed, the number of these observed in the model and the number defined in the chemical component dictionary. Similar counts are reported in the Torsion and Rings columns. '-' means no outliers of that kind were identified.

Mol	Type	Chain	Res	Link	Chirals	Torsions	Rings
2	SF4	A	2233	1	-	0/0/48/48	0/0/5/5
2	SF4	A	2234	1	-	0/0/48/48	0/0/5/5
2	SF4	A	2235	1	-	0/0/48/48	0/0/5/5
3	TPP	A	2236	5	-	0/17/17/17	0/2/2/2
2	SF4	B	2233	1	-	0/0/48/48	0/0/5/5

Continued on next page...

Continued from previous page...

Mol	Type	Chain	Res	Link	Chirals	Torsions	Rings
2	SF4	B	2234	1	-	0/0/48/48	0/0/5/5
2	SF4	B	2235	1	-	0/0/48/48	0/0/5/5
3	TPP	B	2236	5	-	0/17/17/17	0/2/2/2

All (86) bond length outliers are listed below:

Mol	Chain	Res	Type	Atoms	Z	Observed(Å)	Ideal(Å)
2	B	2235	SF4	S3-FE1	-9.63	2.26	2.33
2	B	2234	SF4	S3-FE1	-8.68	2.27	2.33
2	A	2235	SF4	S3-FE1	-8.51	2.27	2.33
2	B	2233	SF4	S4-FE3	-8.26	2.27	2.33
2	B	2233	SF4	S1-FE2	-7.63	2.28	2.33
2	A	2233	SF4	S1-FE2	-7.52	2.28	2.33
2	A	2235	SF4	S3-FE2	-7.42	2.28	2.33
2	A	2234	SF4	S3-FE1	-7.38	2.28	2.33
2	A	2235	SF4	S4-FE2	-7.16	2.28	2.33
2	B	2235	SF4	S1-FE3	-7.02	2.28	2.33
2	A	2233	SF4	S4-FE3	-6.85	2.28	2.33
2	B	2235	SF4	S4-FE2	-6.41	2.28	2.33
3	B	2236	TPP	C4-N3	6.34	1.46	1.39
2	B	2235	SF4	S4-FE1	-6.32	2.29	2.33
2	B	2235	SF4	S3-FE2	-6.21	2.29	2.33
2	B	2233	SF4	S1-FE4	-6.19	2.29	2.33
2	B	2235	SF4	S1-FE2	-6.04	2.29	2.33
2	A	2235	SF4	S1-FE3	-5.91	2.29	2.33
3	A	2236	TPP	C4-N3	5.80	1.45	1.39
3	B	2236	TPP	C6-C5	5.69	1.58	1.51
2	A	2233	SF4	S1-FE4	-5.65	2.29	2.33
2	B	2234	SF4	S3-FE2	-5.55	2.29	2.33
2	B	2234	SF4	S4-FE2	-5.53	2.29	2.33
2	A	2234	SF4	S1-FE2	-5.50	2.29	2.33
2	A	2233	SF4	S2-FE1	-5.28	2.29	2.33
2	A	2233	SF4	S4-FE2	-5.25	2.29	2.33
3	B	2236	TPP	C2'-N1'	5.24	1.43	1.34
2	B	2235	SF4	S2-FE4	-5.22	2.29	2.33
2	B	2234	SF4	S1-FE2	-5.21	2.29	2.33
2	A	2235	SF4	S3-FE4	-5.05	2.29	2.33
2	B	2233	SF4	S2-FE1	-5.04	2.29	2.33
2	A	2235	SF4	S1-FE4	-5.02	2.29	2.33
2	B	2235	SF4	S4-FE3	-4.99	2.29	2.33
2	A	2234	SF4	S3-FE2	-4.87	2.30	2.33
2	A	2234	SF4	S4-FE2	-4.80	2.30	2.33

Continued on next page...

Continued from previous page...

Mol	Chain	Res	Type	Atoms	Z	Observed(Å)	Ideal(Å)
2	A	2234	SF4	S4-FE3	-4.79	2.30	2.33
2	B	2234	SF4	S1-FE3	-4.74	2.30	2.33
2	A	2235	SF4	S2-FE1	-4.68	2.30	2.33
2	A	2234	SF4	S1-FE3	-4.63	2.30	2.33
2	B	2234	SF4	S2-FE4	-4.60	2.30	2.33
3	A	2236	TPP	C5'-C4'	4.59	1.53	1.42
3	A	2236	TPP	PB-O3A	4.58	1.68	1.60
2	B	2235	SF4	S3-FE4	-4.50	2.30	2.33
2	B	2234	SF4	S2-FE3	-4.36	2.30	2.33
3	A	2236	TPP	C6'-N1'	4.31	1.44	1.34
2	B	2234	SF4	S4-FE1	-4.24	2.30	2.33
2	A	2233	SF4	S1-FE3	-4.21	2.30	2.33
2	A	2234	SF4	S2-FE4	-4.20	2.30	2.33
2	B	2233	SF4	S4-FE2	-4.12	2.30	2.33
2	A	2233	SF4	S3-FE4	-4.09	2.30	2.33
3	B	2236	TPP	C5'-C4'	4.07	1.52	1.42
3	A	2236	TPP	CM4-C4	4.03	1.58	1.49
2	B	2234	SF4	S3-FE4	-3.96	2.30	2.33
2	B	2235	SF4	S1-FE4	-3.86	2.30	2.33
2	B	2233	SF4	S1-FE3	-3.83	2.30	2.33
3	B	2236	TPP	C4'-N3'	3.73	1.41	1.35
2	A	2234	SF4	S3-FE4	-3.69	2.30	2.33
2	A	2233	SF4	S3-FE1	-3.56	2.30	2.33
2	B	2234	SF4	S4-FE3	-3.54	2.30	2.33
2	A	2233	SF4	S4-FE1	-3.47	2.30	2.33
2	B	2234	SF4	S2-FE1	-3.46	2.30	2.33
3	B	2236	TPP	PA-O3A	-3.40	1.53	1.59
2	A	2235	SF4	S1-FE2	-3.25	2.31	2.33
3	A	2236	TPP	C5-S1	3.17	1.76	1.73
2	A	2235	SF4	S4-FE3	-3.16	2.31	2.33
2	A	2235	SF4	S2-FE4	-3.15	2.31	2.33
2	A	2234	SF4	S2-FE3	-3.02	2.31	2.33
3	A	2236	TPP	C6-C5	2.98	1.54	1.51
3	A	2236	TPP	C2'-N1'	2.97	1.39	1.34
2	A	2233	SF4	S2-FE4	-2.92	2.31	2.33
2	B	2233	SF4	S2-FE4	-2.90	2.31	2.33
3	B	2236	TPP	C6'-N1'	2.86	1.40	1.34
2	A	2235	SF4	S2-FE3	-2.84	2.31	2.33
2	B	2233	SF4	S3-FE1	-2.82	2.31	2.33
2	A	2234	SF4	S2-FE1	-2.77	2.31	2.33
2	B	2233	SF4	S3-FE4	-2.66	2.31	2.33
2	A	2235	SF4	S4-FE1	-2.56	2.31	2.33

Continued on next page...

Continued from previous page...

Mol	Chain	Res	Type	Atoms	Z	Observed(Å)	Ideal(Å)
3	A	2236	TPP	C2'-N3'	2.53	1.39	1.34
2	B	2235	SF4	S2-FE3	-2.52	2.31	2.33
2	B	2233	SF4	S3-FE2	-2.52	2.31	2.33
2	B	2235	SF4	S2-FE1	-2.50	2.31	2.33
3	A	2236	TPP	C4'-N3'	2.41	1.39	1.35
3	A	2236	TPP	C6'-C5'	2.30	1.43	1.37
3	B	2236	TPP	C2'-N3'	2.29	1.38	1.34
2	B	2233	SF4	S2-FE3	-2.24	2.31	2.33
2	B	2233	SF4	S4-FE1	-2.05	2.31	2.33

All (14) bond angle outliers are listed below:

Mol	Chain	Res	Type	Atoms	Z	Observed(°)	Ideal(°)
3	A	2236	TPP	C4-C5-S1	7.50	116.05	109.93
3	B	2236	TPP	C4-C5-S1	6.57	115.29	109.93
3	B	2236	TPP	C6'-N1'-C2'	4.46	123.51	115.68
3	B	2236	TPP	C6-C5-S1	-3.81	116.96	122.28
3	A	2236	TPP	C6'-N1'-C2'	3.75	122.27	115.68
3	A	2236	TPP	C6-C5-S1	-3.47	117.43	122.28
3	B	2236	TPP	N1'-C2'-N3'	-3.02	120.20	125.65
3	A	2236	TPP	C2-S1-C5	-2.85	89.72	91.63
3	A	2236	TPP	CM4-C4-N3	2.51	125.80	122.53
3	A	2236	TPP	N1'-C2'-N3'	-2.48	121.17	125.65
3	B	2236	TPP	CM2-C2'-N1'	2.41	119.89	117.02
3	B	2236	TPP	C5'-C4'-N3'	2.39	125.15	121.18
3	B	2236	TPP	CM4-C4-N3	2.30	125.53	122.53
3	B	2236	TPP	C7-C6-C5	2.13	118.22	112.48

There are no chirality outliers.

There are no torsion outliers.

There are no ring outliers.

5.7 Other polymers ⓘ

There are no such residues in this entry.

5.8 Polymer linkage issues

There are no chain breaks in this entry.

6 Fit of model and data ⓘ

6.1 Protein, DNA and RNA chains ⓘ

In the following table, the column labelled ‘#RSRZ > 2’ contains the number (and percentage) of RSRZ outliers, followed by percent RSRZ outliers for the chain as percentile scores relative to all X-ray entries and entries of similar resolution. The OWAB column contains the minimum, median, 95th percentile and maximum values of the occupancy-weighted average B-factor per residue. The column labelled ‘Q < 0.9’ lists the number of (and percentage) of residues with an average occupancy less than 0.9.

Mol	Chain	Analysed	<RSRZ>	#RSRZ>2	OWAB(Å ²)	Q<0.9
1	A	1231/1231 (100%)	0.14	59 (4%) 29 26	10, 20, 60, 92	0
1	B	1231/1231 (100%)	-0.08	29 (2%) 56 53	8, 18, 41, 90	0
All	All	2462/2462 (100%)	0.03	88 (3%) 41 36	8, 19, 51, 92	0

All (88) RSRZ outliers are listed below:

Mol	Chain	Res	Type	RSRZ
1	A	1177	PRO	11.4
1	B	631	ALA	10.7
1	B	1178	ALA	10.5
1	A	1176	ALA	8.7
1	B	1232	LYS	8.4
1	A	1178	ALA	7.9
1	A	1182	ALA	7.8
1	B	1176	ALA	7.6
1	A	594	LYS	7.5
1	A	631	ALA	7.0
1	A	595	GLY	6.7
1	A	1180	GLY	6.7
1	B	1175	PHE	6.5
1	B	1183	ASP	6.3
1	B	1177	PRO	6.1
1	A	1179	GLY	6.1
1	A	630	LYS	5.9
1	A	1232	LYS	5.9
1	A	629	THR	5.9
1	A	633	PRO	5.6
1	B	630	LYS	5.6
1	B	1179	GLY	5.6
1	A	576	PHE	5.1
1	A	1231	LYS	5.0

Continued on next page...

Continued from previous page...

Mol	Chain	Res	Type	RSRZ
1	A	597	LYS	5.0
1	A	628	GLU	4.8
1	B	1182	ALA	4.8
1	A	715	VAL	4.6
1	A	634	MET	4.4
1	B	629	THR	4.4
1	A	593	LYS	4.4
1	A	627	ALA	4.2
1	A	1175	PHE	4.1
1	B	1231	LYS	3.9
1	B	1174	SER	3.8
1	A	596	GLU	3.8
1	B	1180	GLY	3.8
1	A	632	GLU	3.7
1	B	632	GLU	3.7
1	A	624	ASP	3.6
1	A	577	GLU	3.5
1	A	1181	LYS	3.5
1	A	588	HIS	3.5
1	A	623	LYS	3.4
1	B	1181	LYS	3.4
1	A	620	ASP	3.4
1	A	714	LEU	3.2
1	A	732	LYS	3.2
1	A	758	LYS	3.2
1	A	626	PRO	3.0
1	B	633	PRO	2.9
1	A	598	ILE	2.9
1	B	596	GLU	2.8
1	A	1165	HIS	2.8
1	A	600	LYS	2.8
1	A	619	PRO	2.8
1	A	1230	THR	2.7
1	B	1228	LYS	2.7
1	A	538	LYS	2.7
1	B	593	LYS	2.7
1	A	592	GLY	2.6
1	A	523	ASP	2.5
1	A	554	GLY	2.5
1	A	3	LYS	2.5
1	B	732	LYS	2.5
1	A	575	PRO	2.4

Continued on next page...

Continued from previous page...

Mol	Chain	Res	Type	RSRZ
1	B	628	GLU	2.4
1	A	617	LYS	2.4
1	A	506	ASP	2.4
1	B	714	LEU	2.4
1	A	591	TYR	2.4
1	A	710	LYS	2.4
1	B	594	LYS	2.4
1	A	519	LEU	2.4
1	A	590	ALA	2.3
1	A	621	SER	2.3
1	A	552	ASP	2.3
1	B	1230	THR	2.3
1	B	590	ALA	2.3
1	A	589	LYS	2.3
1	A	599	VAL	2.2
1	A	719	ALA	2.2
1	B	627	ALA	2.2
1	A	580	VAL	2.2
1	A	503	GLY	2.2
1	A	635	THR	2.1
1	B	292	ALA	2.1
1	B	634	MET	2.1

6.2 Non-standard residues in protein, DNA, RNA chains ⓘ

There are no non-standard protein/DNA/RNA residues in this entry.

6.3 Carbohydrates ⓘ

There are no carbohydrates in this entry.

6.4 Ligands ⓘ

In the following table, the Atoms column lists the number of modelled atoms in the group and the number defined in the chemical component dictionary. LLDF column lists the quality of electron density of the group with respect to its neighbouring residues in protein, DNA or RNA chains. The B-factors column lists the minimum, median, 95th percentile and maximum values of B factors of atoms in the group. The column labelled 'Q < 0.9' lists the number of atoms with occupancy less than 0.9.

Mol	Type	Chain	Res	Atoms	RSR	LLDF	B-factors(\AA^2)	Q<0.9
5	MG	B	2238	1/1	0.13	1.30	5,5,5,5	0
5	MG	A	2238	1/1	0.13	0.78	9,9,9,9	0
3	TPP	A	2236	26/26	0.12	-0.61	8,12,14,16	0
3	TPP	B	2236	26/26	0.11	-0.62	7,9,13,14	0
6	CA	B	2239	1/1	0.07	-0.74	40,40,40,40	0
2	SF4	B	2234	8/8	0.05	-1.74	13,15,16,16	0
2	SF4	B	2233	8/8	0.05	-1.79	17,18,19,20	0
2	SF4	B	2235	8/8	0.06	-1.91	9,11,12,12	0
6	CA	A	2239	1/1	0.06	-1.92	45,45,45,45	0
2	SF4	A	2233	8/8	0.06	-2.00	23,24,25,25	0
4	CL	B	2237	1/1	0.09	-2.05	20,20,20,20	0
2	SF4	A	2234	8/8	0.05	-2.08	18,20,21,22	0
2	SF4	A	2235	8/8	0.06	-2.26	15,15,16,17	0
4	CL	A	2237	1/1	0.08	-4.62	21,21,21,21	0

6.5 Other polymers ⓘ

There are no such residues in this entry.